



# Full wwPDB X-ray Structure Validation Report ⓘ

Dec 12, 2023 – 06:15 pm GMT

PDB ID : 3ZDQ  
Title : STRUCTURE OF THE HUMAN MITOCHONDRIAL ABC TRANSPORTER, ABCB10 (NUCLEOTIDE-FREE FORM)  
Authors : Pike, A.C.W.; Shintre, C.A.; Krojer, T.; von Delft, F.; Vollmar, M.; Mukhopadhyay, S.; Burgess-Brown, N.; Arrowsmith, C.H.; Bountra, C.; Edwards, A.M.; Carpenter, E.P.  
Deposited on : 2012-11-30  
Resolution : 2.85 Å(reported)

This is a Full wwPDB X-ray Structure Validation Report for a publicly released PDB entry.

We welcome your comments at [validation@mail.wwpdb.org](mailto:validation@mail.wwpdb.org)

A user guide is available at

<https://www.wwpdb.org/validation/2017/XrayValidationReportHelp>

with specific help available everywhere you see the ⓘ symbol.

The types of validation reports are described at

<http://www.wwpdb.org/validation/2017/FAQs#types>.

---

The following versions of software and data (see [references](#) ①) were used in the production of this report:

MolProbity : 4.02b-467  
Mogul : 1.8.4, CSD as541be (2020)  
Xtrriage (Phenix) : 1.13  
EDS : 2.36  
buster-report : 1.1.7 (2018)  
Percentile statistics : 20191225.v01 (using entries in the PDB archive December 25th 2019)  
Refmac : 5.8.0158  
CCP4 : 7.0.044 (Gargrove)  
Ideal geometry (proteins) : Engh & Huber (2001)  
Ideal geometry (DNA, RNA) : Parkinson et al. (1996)  
Validation Pipeline (wwPDB-VP) : 2.36

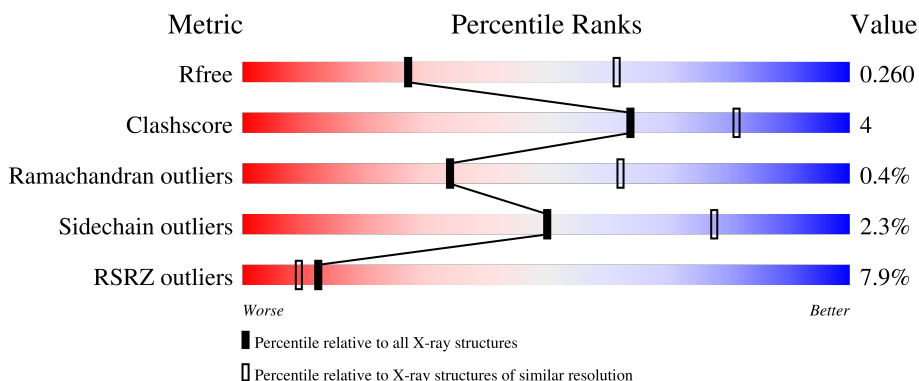
# 1 Overall quality at a glance

The following experimental techniques were used to determine the structure:

*X-RAY DIFFRACTION*


The reported resolution of this entry is 2.85 Å.

Percentile scores (ranging between 0-100) for global validation metrics of the entry are shown in the following graphic. The table shows the number of entries on which the scores are based.



Metric	Whole archive (#Entries)	Similar resolution (#Entries, resolution range(Å))
$R_{free}$	130704	3168 (2.90-2.82)
Clashscore	141614	3438 (2.90-2.82)
Ramachandran outliers	138981	3348 (2.90-2.82)
Sidechain outliers	138945	3351 (2.90-2.82)
RSRZ outliers	127900	3103 (2.90-2.82)

The table below summarises the geometric issues observed across the polymeric chains and their fit to the electron density. The red, orange, yellow and green segments of the lower bar indicate the fraction of residues that contain outliers for  $\geq 3$ , 2, 1 and 0 types of geometric quality criteria respectively. A grey segment represents the fraction of residues that are not modelled. The numeric value for each fraction is indicated below the corresponding segment, with a dot representing fractions  $\leq 5\%$ . The upper red bar (where present) indicates the fraction of residues that have poor fit to the electron density. The numeric value is given above the bar.

Mol	Chain	Length	Quality of chain
1	A	595	

The following table lists non-polymeric compounds, carbohydrate monomers and non-standard residues in protein, DNA, RNA chains that are outliers for geometric or electron-density-fit criteria:

Mol	Type	Chain	Res	Chirality	Geometry	Clashes	Electron density
4	CDL	A	1721	X	-	-	-

*Continued on next page...*

*Continued from previous page...*

Mol	Type	Chain	Res	Chirality	Geometry	Clashes	Electron density
4	CDL	A	1728	X	-	-	-

## 2 Entry composition [i](#)

There are 5 unique types of molecules in this entry. The entry contains 4464 atoms, of which 0 are hydrogens and 0 are deuteriums.

In the tables below, the ZeroOcc column contains the number of atoms modelled with zero occupancy, the AltConf column contains the number of residues with at least one atom in alternate conformation and the Trace column contains the number of residues modelled with at most 2 atoms.

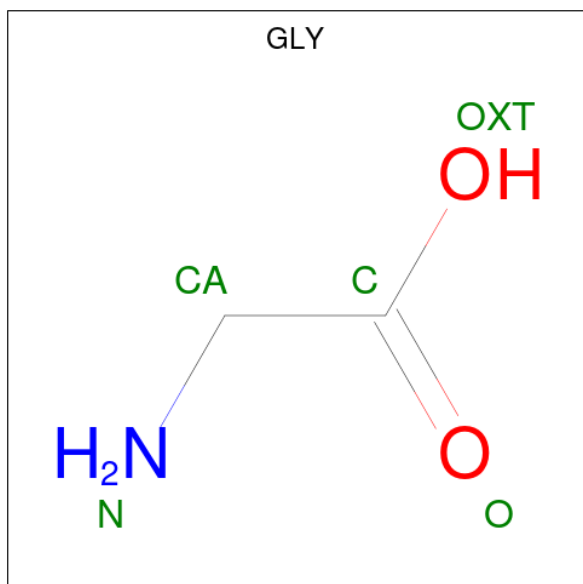
- Molecule 1 is a protein called ATP-BINDING CASSETTE SUB-FAMILY B MEMBER 10, MITOCHONDRIAL.

Mol	Chain	Residues	Atoms					ZeroOcc	AltConf	Trace
			Total	C	N	O	S			
1	A	570	4248	2715	734	783	16	0	1	0

There are 8 discrepancies between the modelled and reference sequences:

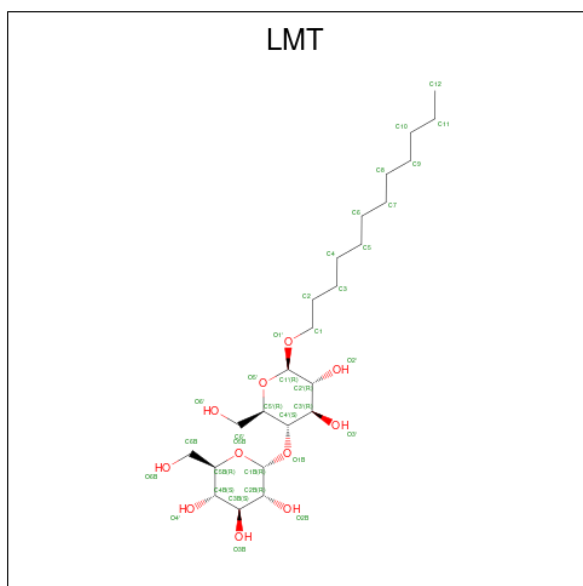
Chain	Residue	Modelled	Actual	Comment	Reference
A	151	MET	-	expression tag	UNP Q9NRK6
A	739	ALA	-	expression tag	UNP Q9NRK6
A	740	GLU	-	expression tag	UNP Q9NRK6
A	741	ASN	-	expression tag	UNP Q9NRK6
A	742	LEU	-	expression tag	UNP Q9NRK6
A	743	TYR	-	expression tag	UNP Q9NRK6
A	744	PHE	-	expression tag	UNP Q9NRK6
A	745	GLN	-	expression tag	UNP Q9NRK6

- Molecule 2 is GLYCINE (three-letter code: GLY) (formula: C<sub>2</sub>H<sub>5</sub>NO<sub>2</sub>).



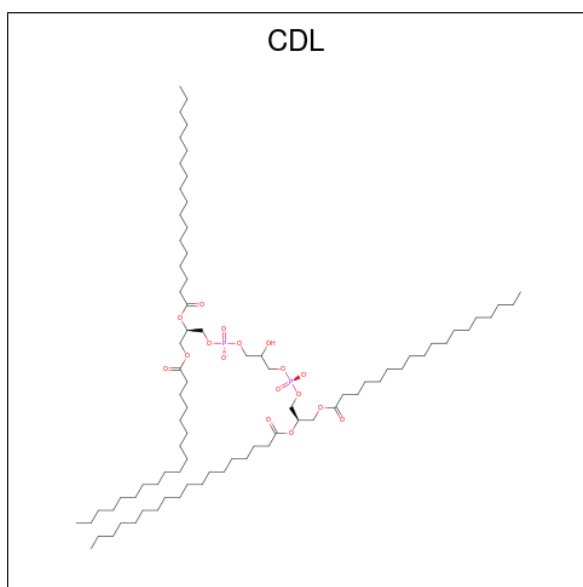
Mol	Chain	Residues	Atoms				ZeroOcc	AltConf
			Total	C	N	O		
2	A	1	5	2	1	2	0	0

- Molecule 3 is DODECYL-BETA-D-MALTOSE (three-letter code: LMT) (formula:  $C_{24}H_{46}O_{11}$ ).



Mol	Chain	Residues	Atoms			ZeroOcc	AltConf
			Total	C	O		
3	A	1	35	24	11	0	0
3	A	1	12	12		0	0
3	A	1	35	24	11	0	0

- Molecule 4 is CARDIOLIPIN (three-letter code: CDL) (formula:  $C_{81}H_{156}O_{17}P_2$ ).



Mol	Chain	Residues	Atoms				ZeroOcc	AltConf
4	A	1	Total	C	O	P	0	0
			84	65	17	2		
4	A	1	Total	C	O		0	0
			15	11	4			

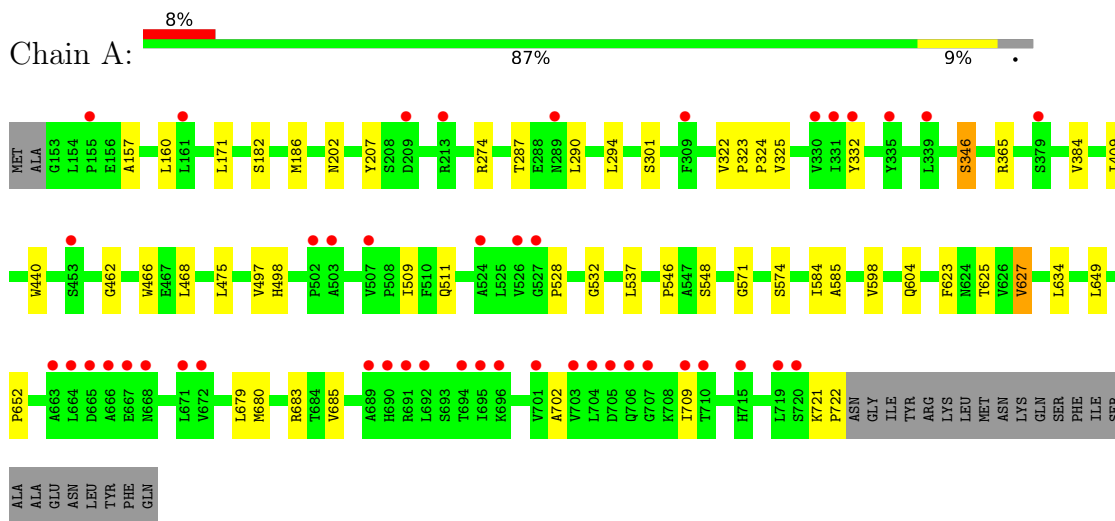
- Molecule 5 is water.

Mol	Chain	Residues	Atoms		ZeroOcc	AltConf
5	A	30	Total	O	0	0
			30	30		

### 3 Residue-property plots [i](#)

These plots are drawn for all protein, RNA, DNA and oligosaccharide chains in the entry. The first graphic for a chain summarises the proportions of the various outlier classes displayed in the second graphic. The second graphic shows the sequence view annotated by issues in geometry and electron density. Residues are color-coded according to the number of geometric quality criteria for which they contain at least one outlier: green = 0, yellow = 1, orange = 2 and red = 3 or more. A red dot above a residue indicates a poor fit to the electron density ( $RSRZ > 2$ ). Stretches of 2 or more consecutive residues without any outlier are shown as a green connector. Residues present in the sample, but not in the model, are shown in grey.

- Molecule 1: ATP-BINDING CASSETTE SUB-FAMILY B MEMBER 10, MITOCHONDRIAL





## 4 Data and refinement statistics i

Property	Value	Source
Space group	P 31 2 1	Depositor
Cell constants a, b, c, $\alpha$ , $\beta$ , $\gamma$	177.79Å 177.79Å 50.06Å 90.00° 90.00° 120.00°	Depositor
Resolution (Å)	30.52 – 2.85 38.49 – 2.85	Depositor EDS
% Data completeness (in resolution range)	100.0 (30.52-2.85) 100.0 (38.49-2.85)	Depositor EDS
$R_{merge}$	0.10	Depositor
$R_{sym}$	(Not available)	Depositor
$\langle I/\sigma(I) \rangle$ <sup>1</sup>	2.15 (at 2.86Å)	Xtrriage
Refinement program	BUSTER 2.11.2	Depositor
R, $R_{free}$	0.202 , 0.244 0.211 , 0.260	Depositor DCC
$R_{free}$ test set	1103 reflections (5.15%)	wwPDB-VP
Wilson B-factor (Å <sup>2</sup> )	68.7	Xtrriage
Anisotropy	0.353	Xtrriage
Bulk solvent $k_{sol}$ (e/Å <sup>3</sup> ), $B_{sol}$ (Å <sup>2</sup> )	0.30 , 54.9	EDS
L-test for twinning <sup>2</sup>	$\langle  L  \rangle = 0.49$ , $\langle L^2 \rangle = 0.32$	Xtrriage
Estimated twinning fraction	0.042 for -h,-k,l	Xtrriage
$F_o, F_c$ correlation	0.92	EDS
Total number of atoms	4464	wwPDB-VP
Average B, all atoms (Å <sup>2</sup> )	75.0	wwPDB-VP

Xtrriage's analysis on translational NCS is as follows: *The largest off-origin peak in the Patterson function is 3.22% of the height of the origin peak. No significant pseudotranslation is detected.*

<sup>1</sup>Intensities estimated from amplitudes.

<sup>2</sup>Theoretical values of  $\langle |L| \rangle$ ,  $\langle L^2 \rangle$  for acentric reflections are 0.5, 0.333 respectively for untwinned datasets, and 0.375, 0.2 for perfectly twinned datasets.

## 5 Model quality [i](#)

### 5.1 Standard geometry [i](#)

Bond lengths and bond angles in the following residue types are not validated in this section: LMT, CDL

The Z score for a bond length (or angle) is the number of standard deviations the observed value is removed from the expected value. A bond length (or angle) with  $|Z| > 5$  is considered an outlier worth inspection. RMSZ is the root-mean-square of all Z scores of the bond lengths (or angles).

Mol	Chain	Bond lengths		Bond angles	
		RMSZ	# Z  >5	RMSZ	# Z  >5
1	A	0.50	0/4324	0.64	0/5867

There are no bond length outliers.

There are no bond angle outliers.

There are no chirality outliers.

There are no planarity outliers.

### 5.2 Too-close contacts [i](#)

In the following table, the Non-H and H(model) columns list the number of non-hydrogen atoms and hydrogen atoms in the chain respectively. The H(added) column lists the number of hydrogen atoms added and optimized by MolProbity. The Clashes column lists the number of clashes within the asymmetric unit, whereas Symm-Clashes lists symmetry-related clashes.

Mol	Chain	Non-H	H(model)	H(added)	Clashes	Symm-Clashes
1	A	4248	0	4280	24	0
2	A	5	0	2	0	0
3	A	82	0	115	2	0
4	A	99	0	135	14	0
5	A	30	0	0	0	0
All	All	4464	0	4532	38	0

The all-atom clashscore is defined as the number of clashes found per 1000 atoms (including hydrogen atoms). The all-atom clashscore for this structure is 4.

All (38) close contacts within the same asymmetric unit are listed below, sorted by their clash magnitude.

Atom-1	Atom-2	Interatomic distance (Å)	Clash overlap (Å)
4:A:1721:CDL:CA4	4:A:1721:CDL:OA9	2.19	0.91
4:A:1721:CDL:OA9	4:A:1721:CDL:HA4	1.68	0.91
4:A:1721:CDL:C59	4:A:1721:CDL:H772	2.06	0.84
1:A:721:LYS:HB3	1:A:722:PRO:HD3	1.68	0.74
4:A:1721:CDL:C59	4:A:1721:CDL:C77	2.66	0.73
4:A:1721:CDL:OA7	4:A:1721:CDL:HA61	1.88	0.73
4:A:1721:CDL:C19	4:A:1721:CDL:H372	2.19	0.72
1:A:322:VAL:HG11	3:A:1723:LMT:H91	1.72	0.71
4:A:1721:CDL:H1	4:A:1721:CDL:OB3	1.93	0.68
1:A:702:ALA:HB1	1:A:709:ILE:HD12	1.83	0.61
1:A:409:ILE:HG13	3:A:1724:LMT:H112	1.88	0.56
1:A:571:GLY:HA3	1:A:652:PRO:HG3	1.90	0.53
1:A:680:MET:HG2	1:A:685:VAL:HG21	1.89	0.53
1:A:498:HIS:HB2	1:A:548:SER:HB3	1.91	0.52
4:A:1721:CDL:H342	4:A:1721:CDL:H171	1.93	0.50
4:A:1721:CDL:C59	4:A:1721:CDL:H771	2.41	0.49
1:A:202:ASN:HB2	1:A:207:TYR:OH	2.13	0.49
4:A:1721:CDL:OB7	4:A:1721:CDL:HB61	2.12	0.49
4:A:1721:CDL:HB31	4:A:1721:CDL:OB9	2.13	0.48
1:A:497:VAL:HG13	1:A:546:PRO:HB3	1.94	0.48
1:A:462:GLY:O	1:A:466:TRP:CD1	2.68	0.47
1:A:182:SER:O	1:A:186:MET:HG2	2.15	0.46
4:A:1721:CDL:OB7	4:A:1721:CDL:CB6	2.62	0.45
4:A:1721:CDL:OB9	4:A:1721:CDL:CB3	2.65	0.45
1:A:157:ALA:HA	1:A:160:LEU:HD12	1.98	0.45
1:A:598:VAL:HG11	1:A:649:LEU:HD21	1.98	0.44
1:A:171:LEU:HD21	1:A:287:THR:HG22	1.99	0.44
1:A:585:ALA:HB2	1:A:623:PHE:HB3	2.00	0.44
1:A:346:SER:HB3	1:A:384:VAL:HG22	2.00	0.43
1:A:325:VAL:HG21	1:A:409:ILE:HD11	1.99	0.43
1:A:274:ARG:HD2	1:A:468:LEU:HD11	2.00	0.42
1:A:679:LEU:O	1:A:683:ARG:HD2	2.19	0.42
1:A:323:PRO:HB2	1:A:324:PRO:HD3	2.02	0.42
1:A:627:VAL:HG11	1:A:634:LEU:HD11	2.01	0.42
1:A:509:ILE:CG2	1:A:532:GLY:HA2	2.51	0.41
1:A:290:LEU:O	1:A:294:LEU:HB2	2.21	0.41
1:A:584:ILE:HD12	1:A:625:THR:HB	2.03	0.41
4:A:1721:CDL:OA9	4:A:1721:CDL:OA6	2.39	0.41

There are no symmetry-related clashes.

## 5.3 Torsion angles [i](#)

### 5.3.1 Protein backbone [i](#)

In the following table, the Percentiles column shows the percent Ramachandran outliers of the chain as a percentile score with respect to all X-ray entries followed by that with respect to entries of similar resolution.

The Analysed column shows the number of residues for which the backbone conformation was analysed, and the total number of residues.

Mol	Chain	Analysed	Favoured	Allowed	Outliers	Percentiles
1	A	569/595 (96%)	559 (98%)	8 (1%)	2 (0%)	34 62

All (2) Ramachandran outliers are listed below:

Mol	Chain	Res	Type
1	A	528	PRO
1	A	627	VAL

### 5.3.2 Protein sidechains [i](#)

In the following table, the Percentiles column shows the percent sidechain outliers of the chain as a percentile score with respect to all X-ray entries followed by that with respect to entries of similar resolution.

The Analysed column shows the number of residues for which the sidechain conformation was analysed, and the total number of residues.

Mol	Chain	Analysed	Rotameric	Outliers	Percentiles
1	A	440/489 (90%)	430 (98%)	10 (2%)	50 78

All (10) residues with a non-rotameric sidechain are listed below:

Mol	Chain	Res	Type
1	A	301	SER
1	A	332	TYR
1	A	346	SER
1	A	365	ARG
1	A	440	TRP
1	A	475	LEU
1	A	511	GLN
1	A	537	LEU
1	A	574	SER

*Continued on next page...*

*Continued from previous page...*

Mol	Chain	Res	Type
1	A	604	GLN

Sometimes sidechains can be flipped to improve hydrogen bonding and reduce clashes. There are no such sidechains identified.

### 5.3.3 RNA [i](#)

There are no RNA molecules in this entry.

## 5.4 Non-standard residues in protein, DNA, RNA chains [i](#)

There are no non-standard protein/DNA/RNA residues in this entry.

## 5.5 Carbohydrates [i](#)

There are no monosaccharides in this entry.

## 5.6 Ligand geometry [i](#)

6 ligands are modelled in this entry.

In the following table, the Counts columns list the number of bonds (or angles) for which Mogul statistics could be retrieved, the number of bonds (or angles) that are observed in the model and the number of bonds (or angles) that are defined in the Chemical Component Dictionary. The Link column lists molecule types, if any, to which the group is linked. The Z score for a bond length (or angle) is the number of standard deviations the observed value is removed from the expected value. A bond length (or angle) with  $|Z| > 2$  is considered an outlier worth inspection. RMSZ is the root-mean-square of all Z scores of the bond lengths (or angles).

Mol	Type	Chain	Res	Link	Bond lengths			Bond angles		
					Counts	RMSZ	# Z  > 2	Counts	RMSZ	# Z  > 2
4	CDL	A	1721	-	83,83,99	0.72	4 (4%)	89,95,111	0.65	4 (4%)
4	CDL	A	1728	-	14,14,99	0.44	0	15,15,111	0.45	0
3	LMT	A	1720	-	36,36,36	0.19	0	47,47,47	0.41	0
3	LMT	A	1724	-	36,36,36	0.23	0	47,47,47	0.45	0
2	GLY	A	1717	-	4,4,4	0.99	0	3,4,4	0.87	0
3	LMT	A	1723	-	11,11,36	0.20	0	10,10,47	0.17	0

In the following table, the Chirals column lists the number of chiral outliers, the number of chiral centers analysed, the number of these observed in the model and the number defined in the

Chemical Component Dictionary. Similar counts are reported in the Torsion and Rings columns. '-' means no outliers of that kind were identified.

Mol	Type	Chain	Res	Link	Chirals	Torsions	Rings
4	CDL	A	1721	-	1/1/9/9	46/94/94/110	-
4	CDL	A	1728	-	1/1/2/9	5/14/14/110	-
3	LMT	A	1720	-	-	6/21/61/61	0/2/2/2
3	LMT	A	1724	-	-	3/21/61/61	0/2/2/2
2	GLY	A	1717	-	-	2/2/2/2	-
3	LMT	A	1723	-	-	2/9/9/61	-

All (4) bond length outliers are listed below:

Mol	Chain	Res	Type	Atoms	Z	Observed(Å)	Ideal(Å)
4	A	1721	CDL	C39-C38	-3.55	1.31	1.51
4	A	1721	CDL	C79-C78	-3.44	1.32	1.51
4	A	1721	CDL	C19-C18	-2.13	1.32	1.49
4	A	1721	CDL	C59-C58	-2.11	1.32	1.49

All (4) bond angle outliers are listed below:

Mol	Chain	Res	Type	Atoms	Z	Observed(°)	Ideal(°)
4	A	1721	CDL	C80-C79-C78	2.44	126.82	114.42
4	A	1721	CDL	C79-C78-C77	2.44	126.81	114.42
4	A	1721	CDL	C39-C38-C37	2.35	126.36	114.42
4	A	1721	CDL	C40-C39-C38	2.31	126.14	114.42

All (2) chirality outliers are listed below:

Mol	Chain	Res	Type	Atom
4	A	1721	CDL	CA4
4	A	1728	CDL	CA4

All (64) torsion outliers are listed below:

Mol	Chain	Res	Type	Atoms
2	A	1717	GLY	O-C-CA-N
4	A	1721	CDL	CA2-C1-CB2-OB2
4	A	1721	CDL	CA2-OA2-PA1-OA4
4	A	1721	CDL	CA3-OA5-PA1-OA2
4	A	1721	CDL	CA4-CA6-OA8-CA7
4	A	1721	CDL	C1-CB2-OB2-PB2

*Continued on next page...*

*Continued from previous page...*

Mol	Chain	Res	Type	Atoms
4	A	1721	CDL	CB2-OB2-PB2-OB5
4	A	1721	CDL	CB3-OB5-PB2-OB2
4	A	1721	CDL	CB3-OB5-PB2-OB3
4	A	1721	CDL	CB3-OB5-PB2-OB4
4	A	1721	CDL	C77-C78-C79-C80
4	A	1721	CDL	C37-C38-C39-C40
4	A	1721	CDL	O1-C1-CA2-OA2
4	A	1721	CDL	O1-C1-CB2-OB2
4	A	1721	CDL	CB2-C1-CA2-OA2
4	A	1721	CDL	CA7-C31-C32-C33
4	A	1721	CDL	C12-C13-C14-C15
2	A	1717	GLY	OXT-C-CA-N
4	A	1721	CDL	CB5-C51-C52-C53
4	A	1721	CDL	CA5-C11-C12-C13
4	A	1721	CDL	C35-C36-C37-C38
4	A	1721	CDL	C53-C54-C55-C56
4	A	1721	CDL	C72-C73-C74-C75
3	A	1723	LMT	C7-C8-C9-C10
4	A	1721	CDL	C75-C76-C77-C78
4	A	1721	CDL	C39-C40-C41-C42
4	A	1721	CDL	C38-C39-C40-C41
4	A	1721	CDL	C78-C79-C80-C81
3	A	1720	LMT	C11-C10-C9-C8
4	A	1721	CDL	C76-C77-C78-C79
4	A	1721	CDL	OB5-CB3-CB4-CB6
3	A	1720	LMT	C3-C4-C5-C6
4	A	1728	CDL	C32-C33-C34-C35
4	A	1721	CDL	C80-C81-C82-C83
4	A	1728	CDL	C31-C32-C33-C34
3	A	1724	LMT	C4-C5-C6-C7
4	A	1721	CDL	CB6-CB4-OB6-CB5
3	A	1723	LMT	C6-C7-C8-C9
4	A	1728	CDL	CA7-C31-C32-C33
3	A	1720	LMT	C4B-C5B-C6B-O6B
3	A	1720	LMT	C4-C5-C6-C7
3	A	1724	LMT	C3-C4-C5-C6
4	A	1721	CDL	CA2-OA2-PA1-OA5
4	A	1721	CDL	CA2-OA2-PA1-OA3
4	A	1721	CDL	CA3-OA5-PA1-OA3
4	A	1721	CDL	CB2-OB2-PB2-OB4
4	A	1721	CDL	OB5-CB3-CB4-OB6
4	A	1721	CDL	C40-C41-C42-C43

*Continued on next page...*

*Continued from previous page...*

Mol	Chain	Res	Type	Atoms
3	A	1720	LMT	C7-C8-C9-C10
4	A	1721	CDL	CA6-CA4-OA6-CA5
4	A	1721	CDL	OA5-CA3-CA4-CA6
4	A	1721	CDL	C51-C52-C53-C54
3	A	1720	LMT	C6-C7-C8-C9
4	A	1721	CDL	OA5-CA3-CA4-OA6
4	A	1721	CDL	C72-C71-CB7-OB8
4	A	1721	CDL	OB6-CB4-CB6-OB8
4	A	1721	CDL	C72-C71-CB7-OB9
4	A	1721	CDL	C52-C53-C54-C55
4	A	1721	CDL	CA3-OA5-PA1-OA4
4	A	1728	CDL	C32-C31-CA7-OA8
4	A	1721	CDL	C12-C11-CA5-OA6
4	A	1728	CDL	OA6-CA4-CA6-OA8
4	A	1721	CDL	C12-C11-CA5-OA7
3	A	1724	LMT	C7-C8-C9-C10

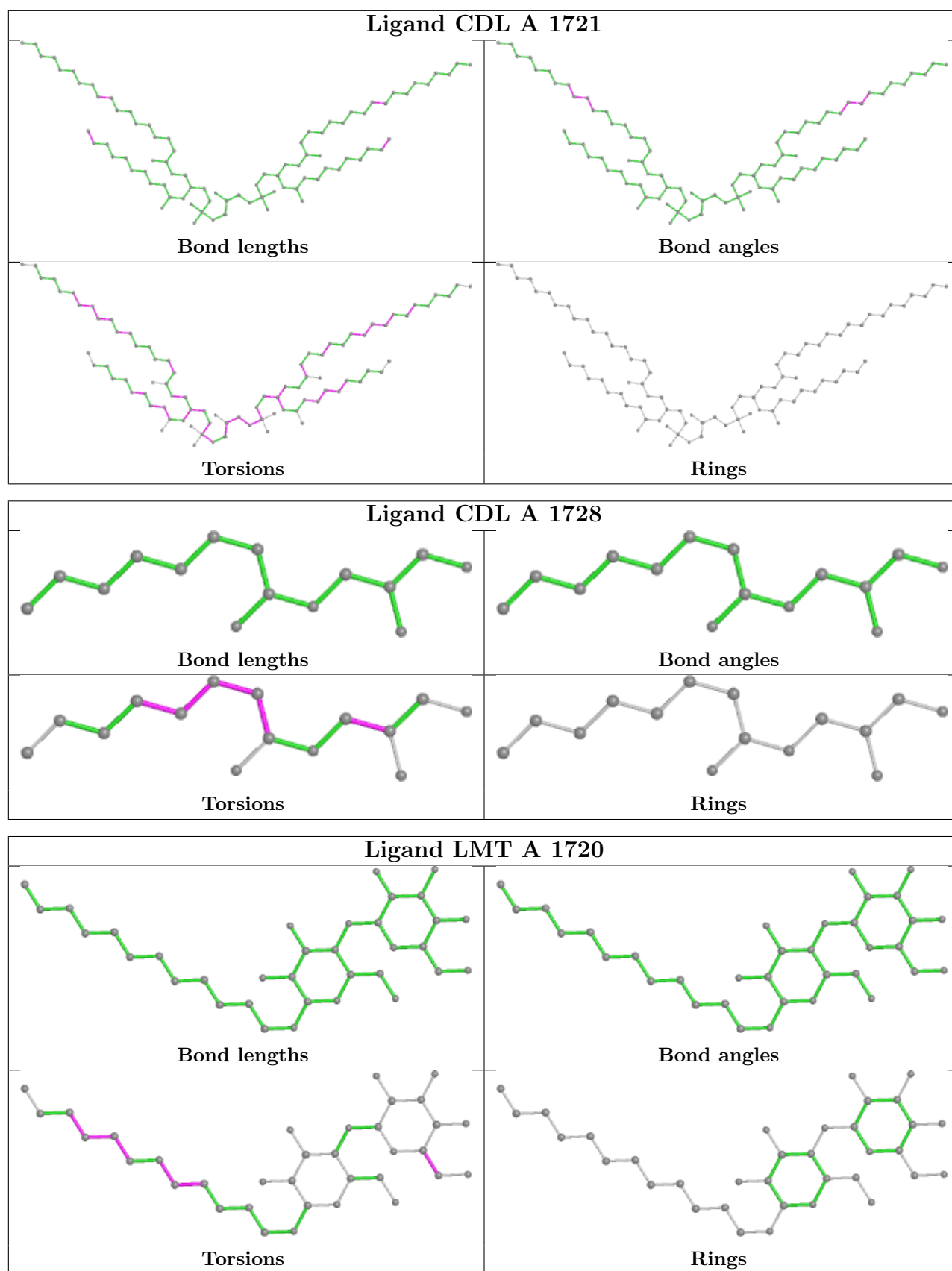
There are no ring outliers.

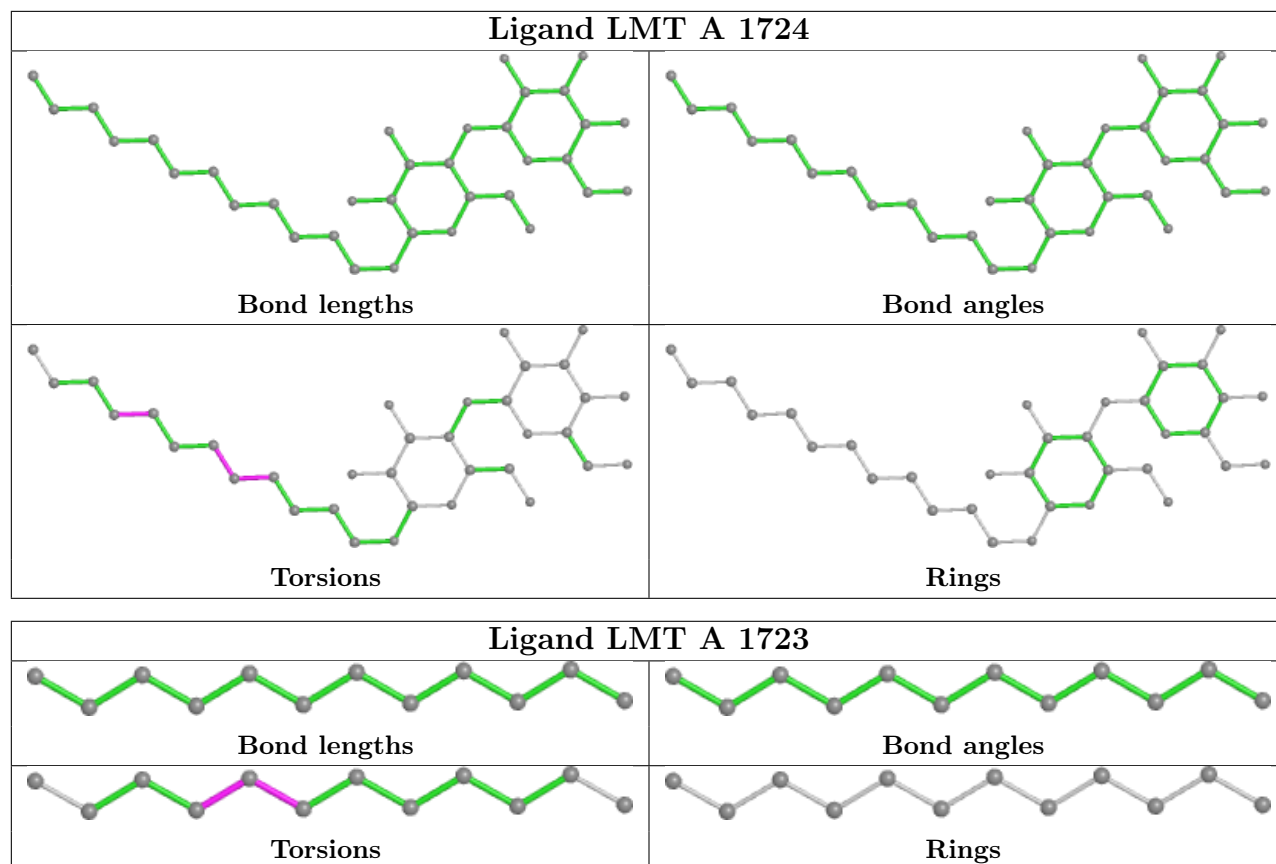
3 monomers are involved in 16 short contacts:

Mol	Chain	Res	Type	Clashes	Symm-Clashes
4	A	1721	CDL	14	0
3	A	1724	LMT	1	0
3	A	1723	LMT	1	0

The following is a two-dimensional graphical depiction of Mogul quality analysis of bond lengths, bond angles, torsion angles, and ring geometry for all instances of the Ligand of Interest. In addition, ligands with molecular weight > 250 and outliers as shown on the validation Tables will also be included. For torsion angles, if less than 5% of the Mogul distribution of torsion angles is within 10 degrees of the torsion angle in question, then that torsion angle is considered an outlier. Any bond that is central to one or more torsion angles identified as an outlier by Mogul will be highlighted in the graph. For rings, the root-mean-square deviation (RMSD) between the ring in question and similar rings identified by Mogul is calculated over all ring torsion angles. If the average RMSD is greater than 60 degrees and the minimal RMSD between the ring in question and any Mogul-identified rings is also greater than 60 degrees, then that ring is considered an outlier. The outliers are highlighted in purple. The color gray indicates Mogul did not find sufficient equivalents in the CSD to analyse the geometry.







## 5.7 Other polymers [i](#)

There are no such residues in this entry.

## 5.8 Polymer linkage issues [i](#)

There are no chain breaks in this entry.

## 6 Fit of model and data

### 6.1 Protein, DNA and RNA chains

In the following table, the column labelled ‘#RSRZ> 2’ contains the number (and percentage) of RSRZ outliers, followed by percent RSRZ outliers for the chain as percentile scores relative to all X-ray entries and entries of similar resolution. The OWAB column contains the minimum, median, 95<sup>th</sup> percentile and maximum values of the occupancy-weighted average B-factor per residue. The column labelled ‘Q< 0.9’ lists the number of (and percentage) of residues with an average occupancy less than 0.9.

Mol	Chain	Analysed	<RSRZ>	#RSRZ>2	OWAB(Å <sup>2</sup> )	Q<0.9
1	A	570/595 (95%)	0.26	45 (7%) <b>12</b>   <b>9</b>	45, 69, 116, 166	0

All (45) RSRZ outliers are listed below:

Mol	Chain	Res	Type	RSRZ
1	A	689	ALA	6.7
1	A	695	ILE	5.7
1	A	705	ASP	5.7
1	A	666	ALA	5.7
1	A	668	ASN	5.6
1	A	665	ASP	5.2
1	A	526	VAL	5.2
1	A	690	HIS	5.0
1	A	503	ALA	4.9
1	A	694	THR	4.4
1	A	335	TYR	4.1
1	A	209	ASP	3.8
1	A	703	VAL	3.7
1	A	692	LEU	3.6
1	A	507	VAL	3.5
1	A	710	THR	3.5
1	A	715	HIS	3.5
1	A	719	LEU	3.4
1	A	502	PRO	3.3
1	A	704	LEU	3.3
1	A	667	GLU	3.1
1	A	155	PRO	3.1
1	A	691	ARG	3.1
1	A	524	ALA	3.0
1	A	696	LYS	3.0
1	A	707	GLY	2.8
1	A	213	ARG	2.8

*Continued on next page...*

*Continued from previous page...*

Mol	Chain	Res	Type	RSRZ
1	A	527	GLY	2.7
1	A	701	VAL	2.7
1	A	331	ILE	2.6
1	A	453	SER	2.6
1	A	339	LEU	2.5
1	A	379	SER	2.4
1	A	706	GLN	2.3
1	A	663	ALA	2.3
1	A	664	LEU	2.2
1	A	720	SER	2.2
1	A	309	PHE	2.1
1	A	672	VAL	2.1
1	A	161	LEU	2.1
1	A	332	TYR	2.1
1	A	289	ASN	2.1
1	A	330	VAL	2.1
1	A	671	LEU	2.0
1	A	709	ILE	2.0

## 6.2 Non-standard residues in protein, DNA, RNA chains [i](#)

There are no non-standard protein/DNA/RNA residues in this entry.

## 6.3 Carbohydrates [i](#)

There are no monosaccharides in this entry.

## 6.4 Ligands [i](#)

In the following table, the Atoms column lists the number of modelled atoms in the group and the number defined in the chemical component dictionary. The B-factors column lists the minimum, median, 95<sup>th</sup> percentile and maximum values of B factors of atoms in the group. The column labelled 'Q< 0.9' lists the number of atoms with occupancy less than 0.9.

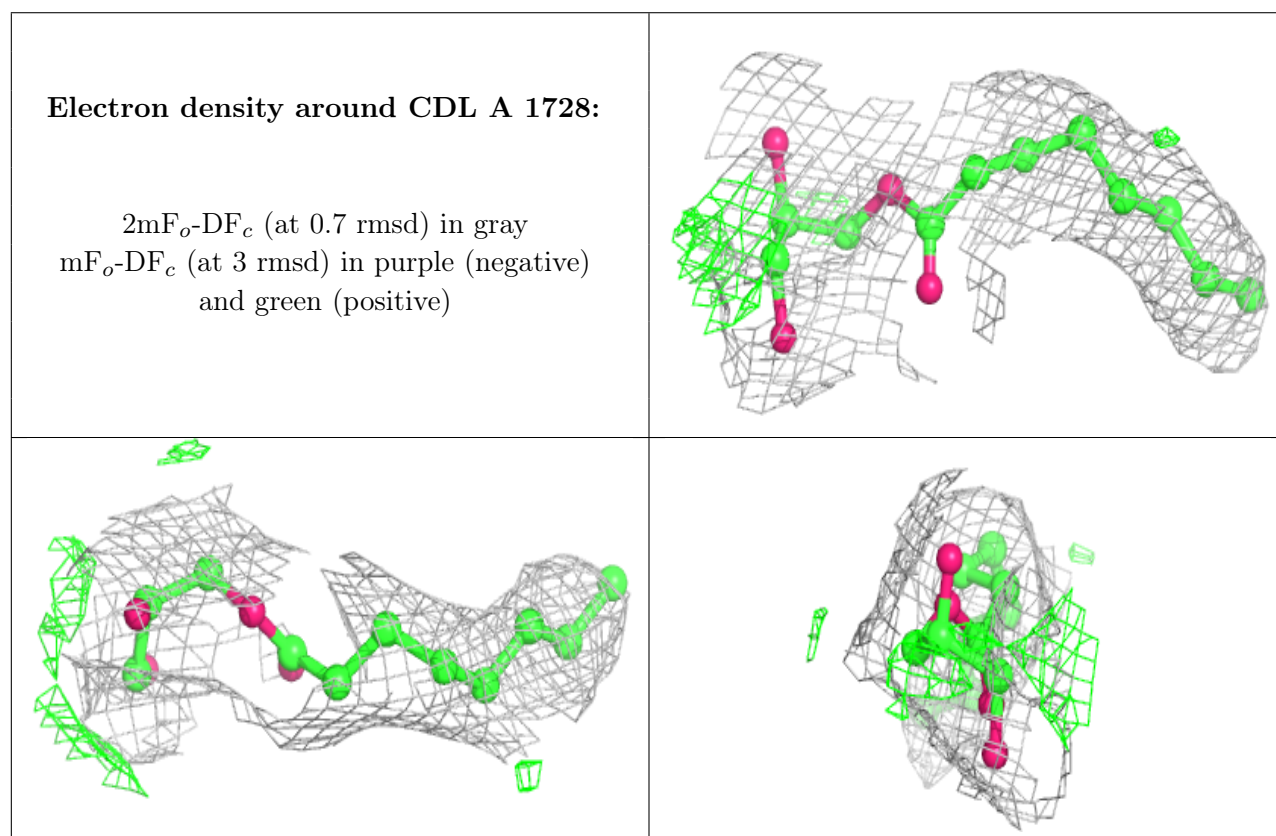
Mol	Type	Chain	Res	Atoms	RSCC	RSR	B-factors( $\text{\AA}^2$ )	Q<0.9
4	CDL	A	1728	15/100	0.63	0.30	96,112,120,121	0
2	GLY	A	1717	5/5	0.81	0.20	92,95,100,104	0
3	LMT	A	1723	12/35	0.88	0.31	52,74,79,80	0
3	LMT	A	1720	35/35	0.92	0.16	62,82,95,96	0
3	LMT	A	1724	35/35	0.93	0.17	65,73,81,84	0

*Continued on next page...*

Continued from previous page...

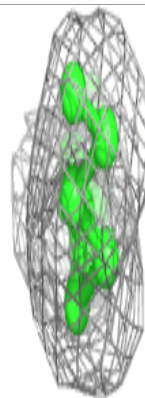
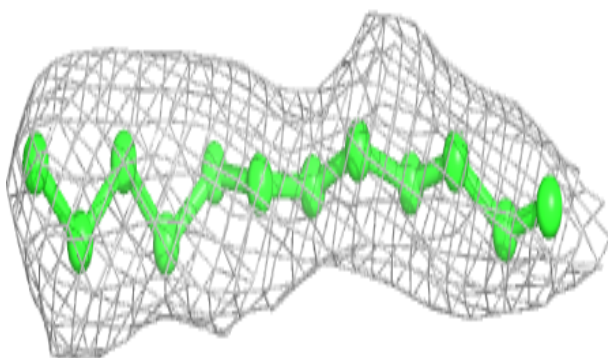
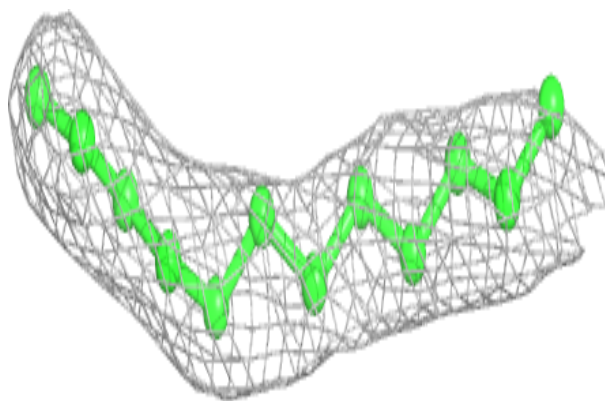
Mol	Type	Chain	Res	Atoms	RSCC	RSR	B-factors( $\text{\AA}^2$ )	Q<0.9
4	CDL	A	1721	84/100	0.94	0.21	65,83,94,97	84

The following is a graphical depiction of the model fit to experimental electron density of all instances of the Ligand of Interest. In addition, ligands with molecular weight > 250 and outliers as shown on the geometry validation Tables will also be included. Each fit is shown from different orientation to approximate a three-dimensional view.

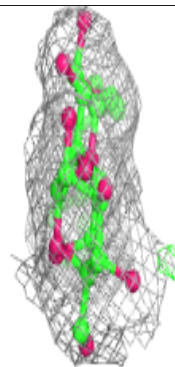
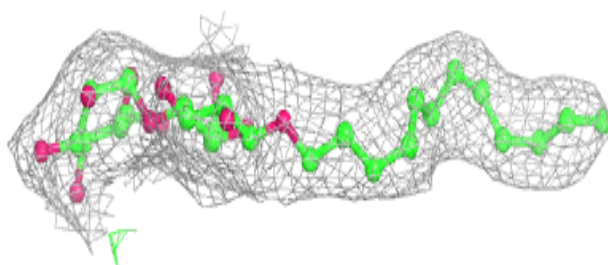
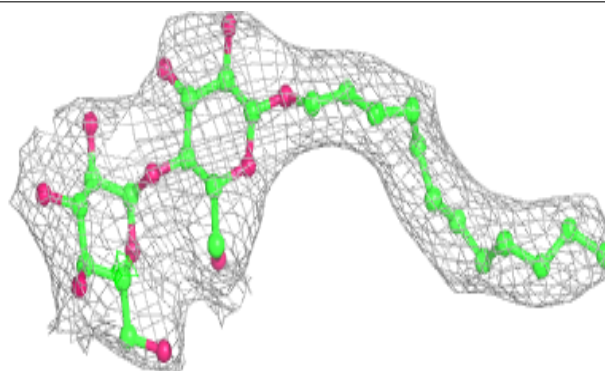


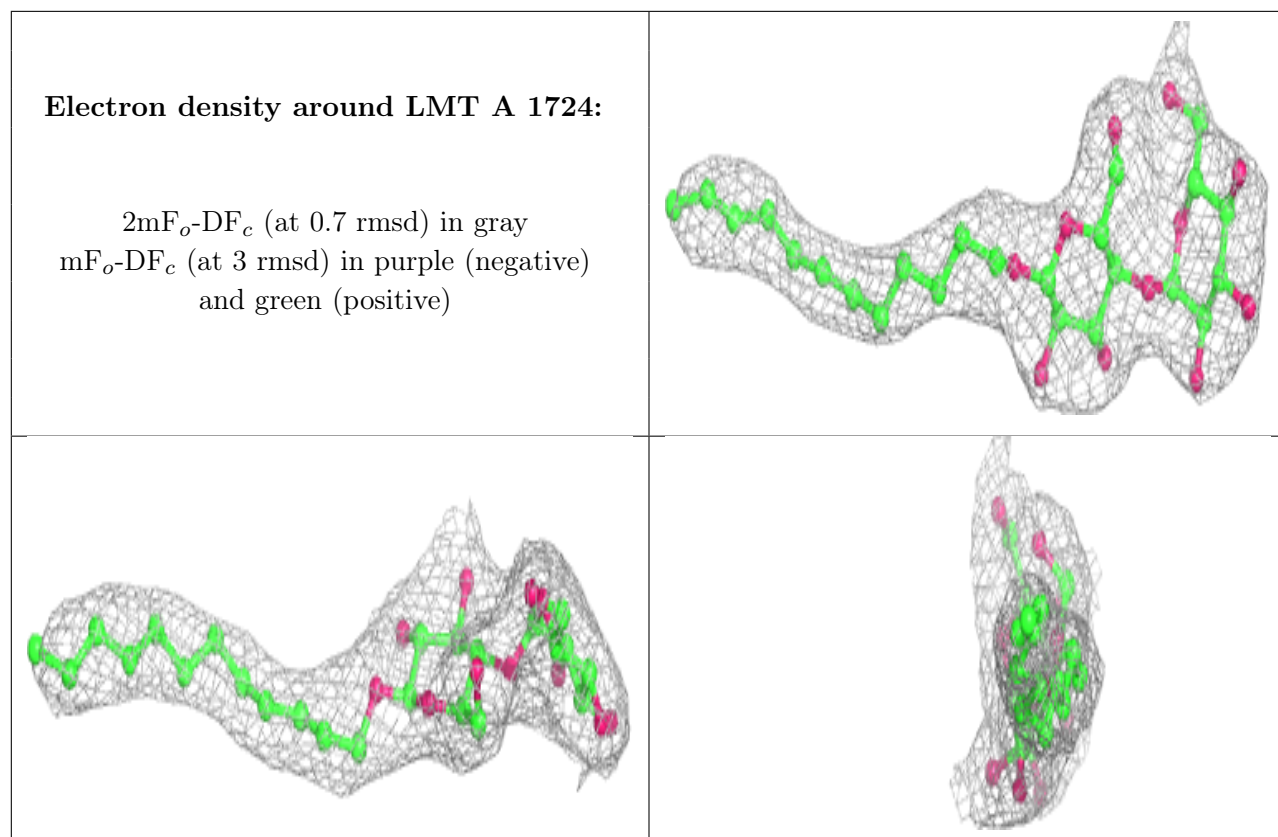
**Electron density around LMT A 1723:**

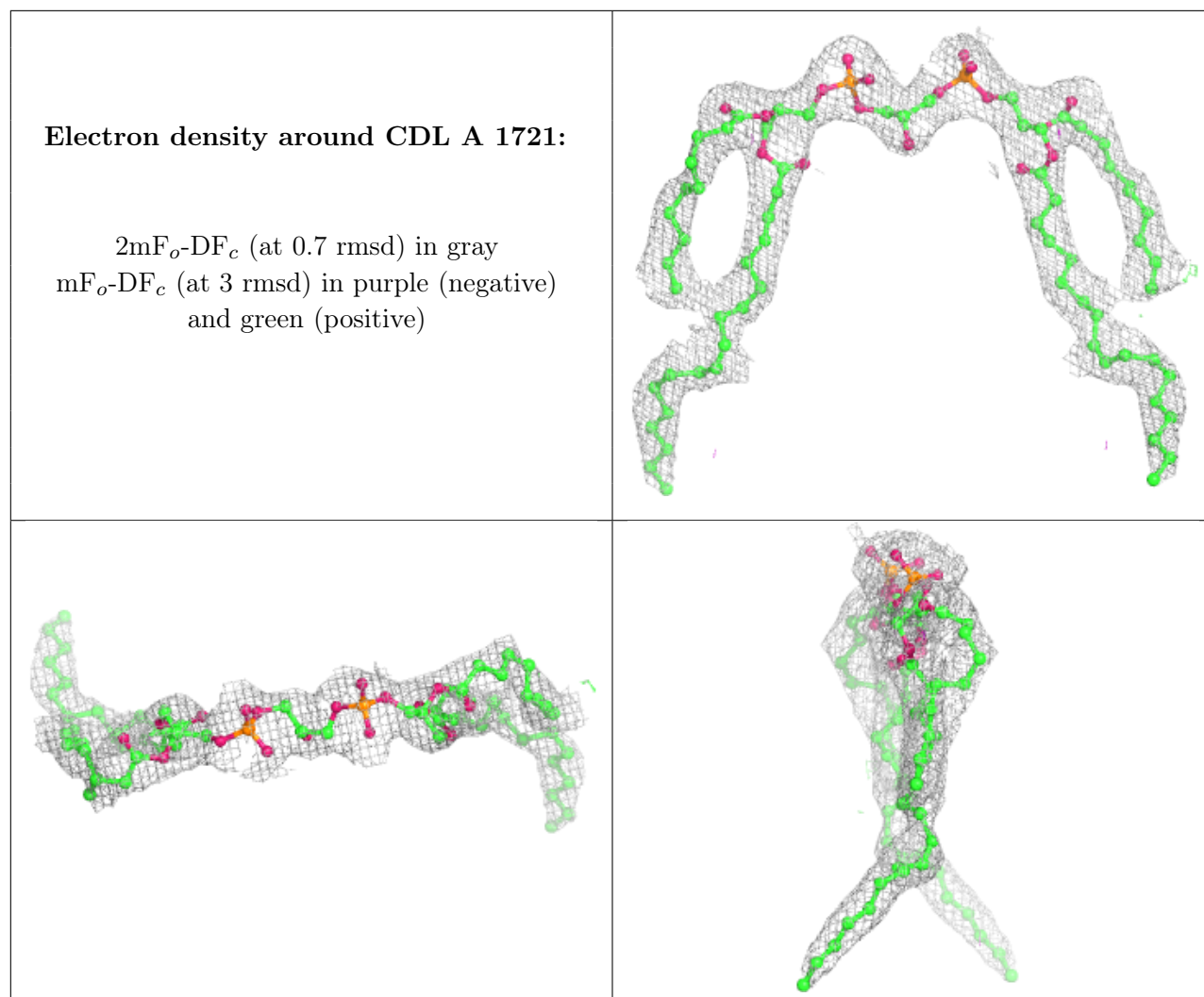
$2mF_o-DF_c$  (at 0.7 rmsd) in gray  
 $mF_o-DF_c$  (at 3 rmsd) in purple (negative)  
and green (positive)

**Electron density around LMT A 1720:**

$2mF_o-DF_c$  (at 0.7 rmsd) in gray  
 $mF_o-DF_c$  (at 3 rmsd) in purple (negative)  
and green (positive)







## 6.5 Other polymers [i](#)

There are no such residues in this entry.