



# Full wwPDB X-ray Structure Validation Report ⓘ

Aug 17, 2022 – 02:41 PM EDT

PDB ID : 3X1H  
Title : hPPARgamma Ligand binding domain in complex with 5-oxo-tricosahexaenoic acid  
Authors : Egawa, D.; Itoh, T.; Yamamoto, K.  
Deposited on : 2014-11-18  
Resolution : 2.30 Å(reported)

This is a Full wwPDB X-ray Structure Validation Report for a publicly released PDB entry.

We welcome your comments at [validation@mail.wwpdb.org](mailto:validation@mail.wwpdb.org)

A user guide is available at

<https://www.wwpdb.org/validation/2017/XrayValidationReportHelp>

with specific help available everywhere you see the ⓘ symbol.

The types of validation reports are described at <http://www.wwpdb.org/validation/2017/FAQs#types>.

---

The following versions of software and data (see [references ⓘ](#)) were used in the production of this report:

MolProbity : 4.02b-467  
Mogul : 1.8.5 (274361), CSD as541be (2020)  
Xtriage (Phenix) : 1.13  
EDS : 2.29  
buster-report : 1.1.7 (2018)  
Percentile statistics : 20191225.v01 (using entries in the PDB archive December 25th 2019)  
Refmac : 5.8.0158  
CCP4 : 7.0.044 (Gargrove)  
Ideal geometry (proteins) : Engh & Huber (2001)  
Ideal geometry (DNA, RNA) : Parkinson et al. (1996)  
Validation Pipeline (wwPDB-VP) : 2.29

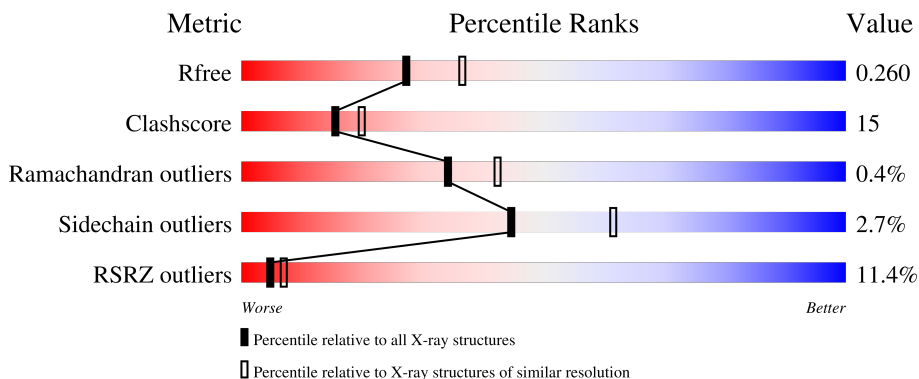
# 1 Overall quality at a glance

The following experimental techniques were used to determine the structure:

*X-RAY DIFFRACTION*

The reported resolution of this entry is 2.30 Å.

Percentile scores (ranging between 0-100) for global validation metrics of the entry are shown in the following graphic. The table shows the number of entries on which the scores are based.



Metric	Whole archive (#Entries)	Similar resolution (#Entries, resolution range(Å))
$R_{free}$	130704	5042 (2.30-2.30)
Clashscore	141614	5643 (2.30-2.30)
Ramachandran outliers	138981	5575 (2.30-2.30)
Sidechain outliers	138945	5575 (2.30-2.30)
RSRZ outliers	127900	4938 (2.30-2.30)

The table below summarises the geometric issues observed across the polymeric chains and their fit to the electron density. The red, orange, yellow and green segments of the lower bar indicate the fraction of residues that contain outliers for  $\geq 3$ , 2, 1 and 0 types of geometric quality criteria respectively. A grey segment represents the fraction of residues that are not modelled. The numeric value for each fraction is indicated below the corresponding segment, with a dot representing fractions  $\leq 5\%$ . The upper red bar (where present) indicates the fraction of residues that have poor fit to the electron density. The numeric value is given above the bar.

Mol	Chain	Length	Quality of chain
1	A	276	
1	B	276	

The following table lists non-polymeric compounds, carbohydrate monomers and non-standard residues in protein, DNA, RNA chains that are outliers for geometric or electron-density-fit criteria:

Mol	Type	Chain	Res	Chirality	Geometry	Clashes	Electron density
2	5OX	A	501	-	-	-	X
2	5OX	B	501	-	-	X	-

## 2 Entry composition i

There are 3 unique types of molecules in this entry. The entry contains 4202 atoms, of which 0 are hydrogens and 0 are deuteriums.

In the tables below, the ZeroOcc column contains the number of atoms modelled with zero occupancy, the AltConf column contains the number of residues with at least one atom in alternate conformation and the Trace column contains the number of residues modelled with at most 2 atoms.

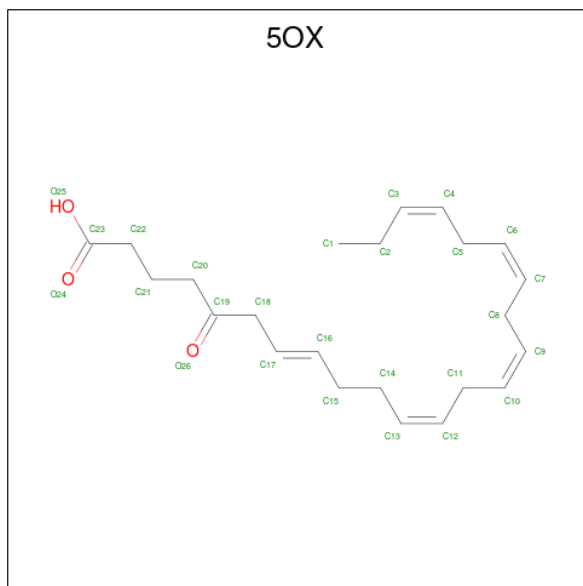
- Molecule 1 is a protein called Peroxisome proliferator-activated receptor gamma.

Mol	Chain	Residues	Atoms					ZeroOcc	AltConf	Trace
			Total	C	N	O	S			
1	A	256	2031	1309	330	382	10	0	0	0
1	B	254	2017	1308	329	371	9	0	0	0

There are 4 discrepancies between the modelled and reference sequences:

Chain	Residue	Modelled	Actual	Comment	Reference
A	202	GLY	-	expression tag	UNP P37231
A	203	ALA	-	expression tag	UNP P37231
B	202	GLY	-	expression tag	UNP P37231
B	203	ALA	-	expression tag	UNP P37231

- Molecule 2 is (7E,11Z,14Z,17Z,20Z)-5-oxotricososa-7,11,14,17,20-pentaenoic acid (three-letter code: 5OX) (formula: C<sub>23</sub>H<sub>34</sub>O<sub>3</sub>).



Mol	Chain	Residues	Atoms			ZeroOcc	AltConf
2	A	1	Total	C	O	0	0
			26	23	3		
2	B	1	Total	C	O	0	0
			26	23	3		

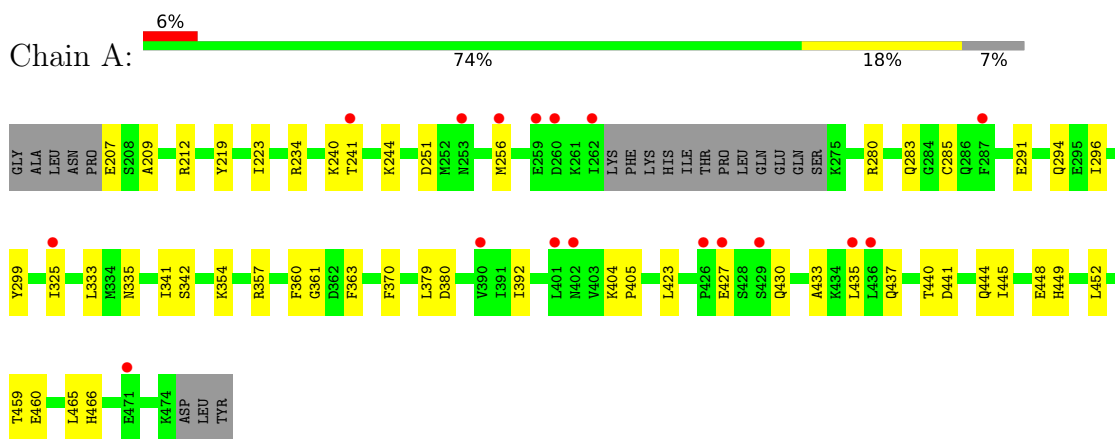
- Molecule 3 is water.

Mol	Chain	Residues	Atoms		ZeroOcc	AltConf
3	A	51	Total	O	0	0
			51	51		
3	B	51	Total	O	0	0
			51	51		

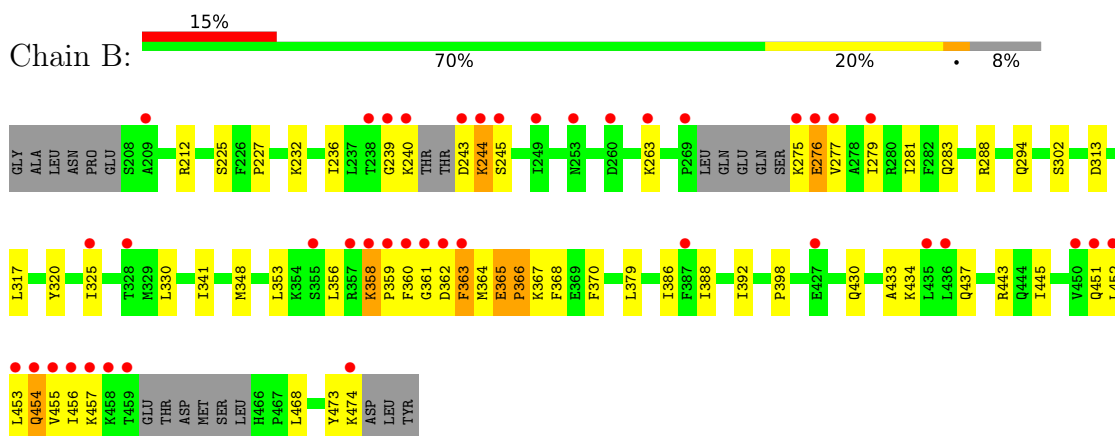
### 3 Residue-property plots [i](#)

These plots are drawn for all protein, RNA, DNA and oligosaccharide chains in the entry. The first graphic for a chain summarises the proportions of the various outlier classes displayed in the second graphic. The second graphic shows the sequence view annotated by issues in geometry and electron density. Residues are color-coded according to the number of geometric quality criteria for which they contain at least one outlier: green = 0, yellow = 1, orange = 2 and red = 3 or more. A red dot above a residue indicates a poor fit to the electron density ( $RSRZ > 2$ ). Stretches of 2 or more consecutive residues without any outlier are shown as a green connector. Residues present in the sample, but not in the model, are shown in grey.

- Molecule 1: Peroxisome proliferator-activated receptor gamma



- Molecule 1: Peroxisome proliferator-activated receptor gamma



## 4 Data and refinement statistics

Property	Value	Source
Space group	C 1 2 1	Depositor
Cell constants a, b, c, $\alpha$ , $\beta$ , $\gamma$	93.33Å 61.96Å 118.79Å 90.00° 102.86° 90.00°	Depositor
Resolution (Å)	29.93 – 2.30 29.93 – 2.30	Depositor EDS
% Data completeness (in resolution range)	90.5 (29.93-2.30) 90.5 (29.93-2.30)	Depositor EDS
$R_{merge}$	(Not available)	Depositor
$R_{sym}$	(Not available)	Depositor
$\langle I/\sigma(I) \rangle$ <sup>1</sup>	3.01 (at 2.31Å)	Xtrriage
Refinement program	REFMAC 5.7.0029	Depositor
R, $R_{free}$	0.228 , 0.266 0.231 , 0.260	Depositor DCC
$R_{free}$ test set	1341 reflections (5.00%)	wwPDB-VP
Wilson B-factor (Å <sup>2</sup> )	34.7	Xtrriage
Anisotropy	0.268	Xtrriage
Bulk solvent $k_{sol}$ (e/Å <sup>3</sup> ), $B_{sol}$ (Å <sup>2</sup> )	0.44 , 52.5	EDS
L-test for twinning <sup>2</sup>	$\langle  L  \rangle = 0.48$ , $\langle L^2 \rangle = 0.31$	Xtrriage
Estimated twinning fraction	No twinning to report.	Xtrriage
$F_o, F_c$ correlation	0.92	EDS
Total number of atoms	4202	wwPDB-VP
Average B, all atoms (Å <sup>2</sup> )	45.0	wwPDB-VP

Xtrriage's analysis on translational NCS is as follows: *The largest off-origin peak in the Patterson function is 7.36% of the height of the origin peak. No significant pseudotranslation is detected.*

<sup>1</sup>Intensities estimated from amplitudes.

<sup>2</sup>Theoretical values of  $\langle |L| \rangle$ ,  $\langle L^2 \rangle$  for acentric reflections are 0.5, 0.333 respectively for untwinned datasets, and 0.375, 0.2 for perfectly twinned datasets.

## 5 Model quality [i](#)

### 5.1 Standard geometry [i](#)

Bond lengths and bond angles in the following residue types are not validated in this section: 5OX

The Z score for a bond length (or angle) is the number of standard deviations the observed value is removed from the expected value. A bond length (or angle) with  $|Z| > 5$  is considered an outlier worth inspection. RMSZ is the root-mean-square of all Z scores of the bond lengths (or angles).

Mol	Chain	Bond lengths		Bond angles	
		RMSZ	# $ Z  > 5$	RMSZ	# $ Z  > 5$
1	A	0.89	1/2064 (0.0%)	0.89	0/2785
1	B	0.89	1/2051 (0.0%)	0.83	1/2764 (0.0%)
All	All	0.89	2/4115 (0.0%)	0.86	1/5549 (0.0%)

All (2) bond length outliers are listed below:

Mol	Chain	Res	Type	Atoms	Z	Observed(Å)	Ideal(Å)
1	B	366	PRO	N-CD	5.31	1.55	1.47
1	A	299	TYR	CD2-CE2	-5.09	1.31	1.39

All (1) bond angle outliers are listed below:

Mol	Chain	Res	Type	Atoms	Z	Observed(°)	Ideal(°)
1	B	365	GLU	C-N-CD	5.56	140.07	128.40

There are no chirality outliers.

There are no planarity outliers.

### 5.2 Too-close contacts [i](#)

In the following table, the Non-H and H(model) columns list the number of non-hydrogen atoms and hydrogen atoms in the chain respectively. The H(added) column lists the number of hydrogen atoms added and optimized by MolProbity. The Clashes column lists the number of clashes within the asymmetric unit, whereas Symm-Clashes lists symmetry-related clashes.

Mol	Chain	Non-H	H(model)	H(added)	Clashes	Symm-Clashes
1	A	2031	0	2066	45	0
1	B	2017	0	2058	66	0
2	A	26	0	32	15	0

*Continued on next page...*



*Continued from previous page...*

Mol	Chain	Non-H	H(model)	H(added)	Clashes	Symm-Clashes
2	B	26	0	32	22	0
3	A	51	0	0	4	0
3	B	51	0	0	2	0
All	All	4202	0	4188	123	0

The all-atom clashscore is defined as the number of clashes found per 1000 atoms (including hydrogen atoms). The all-atom clashscore for this structure is 15.

All (123) close contacts within the same asymmetric unit are listed below, sorted by their clash magnitude.

Atom-1	Atom-2	Interatomic distance (Å)	Clash overlap (Å)
1:A:241:THR:CG2	1:A:244:LYS:HB2	1.78	1.11
1:B:358:LYS:CB	1:B:359:PRO:HD2	1.85	1.06
1:B:363:PHE:HE1	1:B:452:LEU:HB3	1.19	1.04
1:B:366:PRO:HG2	1:B:367:LYS:HE2	1.04	1.01
1:B:240:LYS:C	1:B:243:ASP:N	2.16	0.98
1:B:366:PRO:HG2	1:B:367:LYS:CE	1.92	0.98
1:A:241:THR:CB	1:A:244:LYS:HB2	1.93	0.97
1:B:358:LYS:CB	1:B:359:PRO:CD	2.42	0.97
1:B:363:PHE:CE1	1:B:452:LEU:HB3	2.01	0.95
2:B:501:5OX:C16	2:B:501:5OX:H18	1.96	0.95
1:A:241:THR:HB	1:A:244:LYS:HB2	1.48	0.94
2:B:501:5OX:H18	2:B:501:5OX:C17	1.98	0.92
1:A:341:ILE:HG22	2:A:501:5OX:H17	1.53	0.88
1:B:366:PRO:CG	1:B:367:LYS:HE2	2.00	0.81
1:A:241:THR:HG21	1:A:244:LYS:HB2	1.62	0.80
1:B:330:LEU:CD1	2:B:501:5OX:H20	2.13	0.79
1:B:363:PHE:CE1	1:B:452:LEU:CB	2.66	0.78
1:A:341:ILE:HG21	2:A:501:5OX:H18	1.68	0.73
1:B:453:LEU:O	1:B:456:ILE:HG13	1.88	0.72
1:B:330:LEU:HD11	2:B:501:5OX:H20	1.70	0.71
1:A:241:THR:CG2	1:A:244:LYS:CB	2.64	0.71
1:A:341:ILE:HG22	2:A:501:5OX:C12	2.20	0.71
1:B:364:MET:O	1:B:368:PHE:HD2	1.75	0.70
1:A:440:THR:HG21	1:B:443:ARG:HD2	1.76	0.68
1:B:279:ILE:O	1:B:283:GLN:HG3	1.95	0.67
1:B:276:GLU:HG3	1:B:277:VAL:N	2.09	0.66
1:A:341:ILE:CG2	2:A:501:5OX:H18	2.24	0.66
1:A:449:HIS:HE1	2:A:501:5OX:O25	1.78	0.66
1:B:370:PHE:HB2	1:B:445:ILE:HD11	1.80	0.64
1:B:341:ILE:HG22	2:B:501:5OX:H17	1.77	0.64

*Continued on next page...*

*Continued from previous page...*

Atom-1	Atom-2	Interatomic distance (Å)	Clash overlap (Å)
1:B:341:ILE:HB	2:B:501:5OX:H27	1.80	0.64
1:B:364:MET:O	1:B:368:PHE:CD2	2.50	0.64
1:A:241:THR:HB	1:A:244:LYS:CB	2.27	0.63
1:B:365:GLU:OE2	1:B:365:GLU:HA	1.98	0.62
1:B:275:LYS:HD2	1:B:276:GLU:HB3	1.80	0.62
1:B:330:LEU:HD11	2:B:501:5OX:C10	2.30	0.61
1:A:449:HIS:CE1	2:A:501:5OX:O25	2.54	0.59
1:B:456:ILE:HD12	1:B:457:LYS:N	2.18	0.59
1:B:240:LYS:O	1:B:243:ASP:N	2.36	0.58
1:A:219:TYR:CZ	1:A:223:ILE:HD11	2.37	0.58
1:A:241:THR:HG21	1:A:244:LYS:CB	2.32	0.58
2:A:501:5OX:H26	2:A:501:5OX:C9	2.33	0.58
1:A:354:LYS:HA	1:A:361:GLY:O	2.04	0.57
1:B:356:LEU:HB2	1:B:361:GLY:HA2	1.86	0.57
1:A:285:CYS:HB3	2:A:501:5OX:C17	2.35	0.57
1:B:277:VAL:O	1:B:281:ILE:HD12	2.04	0.57
1:B:370:PHE:CB	1:B:445:ILE:HD11	2.36	0.56
1:B:330:LEU:CD1	2:B:501:5OX:C10	2.83	0.55
1:B:281:ILE:HG23	2:B:501:5OX:H33	1.89	0.55
1:A:444:GLN:NE2	1:A:448:GLU:OE1	2.38	0.55
2:A:501:5OX:H30	2:A:501:5OX:C6	2.37	0.54
2:B:501:5OX:C4	2:B:501:5OX:C8	2.86	0.54
1:A:370:PHE:HB2	1:A:445:ILE:HD11	1.88	0.54
1:A:241:THR:HB	1:A:244:LYS:H	1.73	0.54
3:A:2040:HOH:O	1:B:437:GLN:NE2	2.40	0.54
1:A:285:CYS:HB3	2:A:501:5OX:H10	1.89	0.54
1:A:380:ASP:HB2	3:A:2038:HOH:O	2.08	0.54
2:B:501:5OX:C8	2:B:501:5OX:C12	2.86	0.53
1:B:239:GLY:O	1:B:240:LYS:HB2	2.07	0.53
1:A:342:SER:HB2	2:A:501:5OX:H28	1.90	0.52
1:B:239:GLY:O	1:B:240:LYS:CB	2.57	0.52
1:A:433:ALA:O	1:A:437:GLN:HG3	2.09	0.52
1:B:362:ASP:O	1:B:366:PRO:HD2	2.10	0.52
2:A:501:5OX:H20	2:A:501:5OX:H13	1.90	0.52
1:B:325:ILE:HD11	1:B:392:ILE:HG13	1.91	0.51
1:B:456:ILE:HD12	1:B:456:ILE:C	2.30	0.51
1:A:241:THR:HG22	1:A:244:LYS:HB2	1.82	0.50
1:B:364:MET:CE	2:B:501:5OX:H14	2.41	0.50
1:B:212:ARG:HD2	3:B:2043:HOH:O	2.11	0.50
1:A:379:LEU:HD11	1:A:435:LEU:HD13	1.93	0.50
1:B:288:ARG:NH1	2:B:501:5OX:O24	2.44	0.49

*Continued on next page...*

*Continued from previous page...*

Atom-1	Atom-2	Interatomic distance (Å)	Clash overlap (Å)
1:B:320:TYR:CZ	1:B:398:PRO:HG2	2.48	0.49
2:B:501:5OX:H18	2:B:501:5OX:C15	2.41	0.48
1:A:360:PHE:O	1:A:363:PHE:HD1	1.95	0.48
1:A:291:GLU:HA	1:A:294:GLN:OE1	2.14	0.48
1:B:362:ASP:O	1:B:366:PRO:CD	2.63	0.47
1:B:288:ARG:CG	2:B:501:5OX:H6	2.45	0.47
1:A:256:MET:CE	1:A:280:ARG:HH22	2.27	0.47
1:A:333:LEU:N	1:A:333:LEU:HD23	2.29	0.47
2:A:501:5OX:C9	2:A:501:5OX:C5	2.93	0.47
2:B:501:5OX:H28	2:B:501:5OX:H23	1.97	0.46
1:B:263:LYS:HG2	1:B:263:LYS:O	2.15	0.46
2:B:501:5OX:C12	2:B:501:5OX:H22	2.45	0.46
1:B:363:PHE:CE1	1:B:452:LEU:HB2	2.47	0.46
1:A:441:ASP:O	1:A:445:ILE:HG12	2.16	0.46
1:B:430:GLN:O	1:B:434:LYS:HG3	2.16	0.46
1:B:473:TYR:O	1:B:474:LYS:O	2.34	0.46
1:B:433:ALA:O	1:B:437:GLN:HG3	2.16	0.45
2:A:501:5OX:C6	2:A:501:5OX:C2	2.95	0.45
1:A:240:LYS:C	1:A:241:THR:CG2	2.85	0.45
1:A:207:GLU:HG3	1:A:209:ALA:HB3	1.98	0.45
2:B:501:5OX:C4	2:B:501:5OX:H23	2.48	0.44
1:A:465:LEU:HD12	1:A:466:HIS:H	1.82	0.44
1:A:335:ASN:HA	3:A:2033:HOH:O	2.17	0.44
1:B:360:PHE:O	1:B:363:PHE:HB2	2.17	0.44
1:B:294:GLN:NE2	1:B:294:GLN:HA	2.32	0.44
1:B:364:MET:HE2	2:B:501:5OX:H14	2.00	0.43
1:B:348:MET:HE3	2:B:501:5OX:H16	1.99	0.43
1:A:363:PHE:CB	1:A:452:LEU:HD21	2.48	0.43
1:A:251:ASP:OD1	1:A:251:ASP:C	2.57	0.43
1:A:357:ARG:HH22	1:A:460:GLU:CD	2.22	0.43
1:B:288:ARG:HG2	2:B:501:5OX:H6	2.00	0.43
1:B:243:ASP:CG	1:B:244:LYS:N	2.73	0.42
1:B:330:LEU:HD12	2:B:501:5OX:H20	1.99	0.42
1:A:404:LYS:N	1:A:405:PRO:HD2	2.34	0.42
1:B:325:ILE:HD11	1:B:392:ILE:CG1	2.48	0.42
1:A:285:CYS:CB	2:A:501:5OX:H10	2.43	0.41
1:A:325:ILE:HD11	1:A:392:ILE:CG1	2.51	0.41
1:B:243:ASP:CG	1:B:244:LYS:H	2.23	0.41
1:A:212:ARG:HD3	1:A:423:LEU:HD11	2.03	0.41
1:A:296:ILE:HG12	1:A:325:ILE:HG21	2.03	0.41
1:B:232:LYS:O	1:B:236:ILE:HG12	2.20	0.41

*Continued on next page...*

Continued from previous page...

Atom-1	Atom-2	Interatomic distance (Å)	Clash overlap (Å)
1:B:244:LYS:HG3	1:B:245:SER:N	2.36	0.41
1:B:313:ASP:O	1:B:317:LEU:HG	2.21	0.41
1:B:451:GLN:O	1:B:454:GLN:HG2	2.21	0.41
1:B:453:LEU:HD12	1:B:453:LEU:HA	1.84	0.41
1:A:234:ARG:HD3	3:B:2051:HOH:O	2.21	0.40
1:A:430:GLN:NE2	3:A:2049:HOH:O	2.54	0.40
1:B:353:LEU:O	1:B:356:LEU:HG	2.21	0.40
1:B:275:LYS:HD2	1:B:276:GLU:N	2.36	0.40
1:B:451:GLN:O	1:B:455:VAL:HG23	2.21	0.40
1:B:276:GLU:HG3	1:B:277:VAL:H	1.85	0.40
1:B:388:ILE:HG21	1:B:388:ILE:HD13	1.87	0.40

There are no symmetry-related clashes.

## 5.3 Torsion angles [i](#)

### 5.3.1 Protein backbone [i](#)

In the following table, the Percentiles column shows the percent Ramachandran outliers of the chain as a percentile score with respect to all X-ray entries followed by that with respect to entries of similar resolution.

The Analysed column shows the number of residues for which the backbone conformation was analysed, and the total number of residues.

Mol	Chain	Analysed	Favoured	Allowed	Outliers	Percentiles	
1	A	252/276 (91%)	250 (99%)	2 (1%)	0	100	100
1	B	246/276 (89%)	236 (96%)	8 (3%)	2 (1%)	19	23
All	All	498/552 (90%)	486 (98%)	10 (2%)	2 (0%)	34	42

All (2) Ramachandran outliers are listed below:

Mol	Chain	Res	Type
1	B	358	LYS
1	B	227	PRO

### 5.3.2 Protein sidechains [i](#)

In the following table, the Percentiles column shows the percent sidechain outliers of the chain as a percentile score with respect to all X-ray entries followed by that with respect to entries of similar resolution.

The Analysed column shows the number of residues for which the sidechain conformation was analysed, and the total number of residues.

Mol	Chain	Analysed	Rotameric	Outliers	Percentiles	
1	A	225/247 (91%)	222 (99%)	3 (1%)	69	82
1	B	222/247 (90%)	213 (96%)	9 (4%)	30	43
All	All	447/494 (90%)	435 (97%)	12 (3%)	44	61

All (12) residues with a non-rotameric sidechain are listed below:

Mol	Chain	Res	Type
1	A	283	GLN
1	A	427	GLU
1	A	459	THR
1	B	225	SER
1	B	244	LYS
1	B	276	GLU
1	B	302	SER
1	B	363	PHE
1	B	379	LEU
1	B	386	ILE
1	B	454	GLN
1	B	468	LEU

Sometimes sidechains can be flipped to improve hydrogen bonding and reduce clashes. All (7) such sidechains are listed below:

Mol	Chain	Res	Type
1	A	286	GLN
1	A	449	HIS
1	B	294	GLN
1	B	410	GLN
1	B	444	GLN
1	B	454	GLN
1	B	466	HIS

### 5.3.3 RNA [i](#)

There are no RNA molecules in this entry.

## 5.4 Non-standard residues in protein, DNA, RNA chains [i](#)

There are no non-standard protein/DNA/RNA residues in this entry.

## 5.5 Carbohydrates [i](#)

There are no monosaccharides in this entry.

## 5.6 Ligand geometry [i](#)

2 ligands are modelled in this entry.

In the following table, the Counts columns list the number of bonds (or angles) for which Mogul statistics could be retrieved, the number of bonds (or angles) that are observed in the model and the number of bonds (or angles) that are defined in the Chemical Component Dictionary. The Link column lists molecule types, if any, to which the group is linked. The Z score for a bond length (or angle) is the number of standard deviations the observed value is removed from the expected value. A bond length (or angle) with  $|Z| > 2$  is considered an outlier worth inspection. RMSZ is the root-mean-square of all Z scores of the bond lengths (or angles).

Mol	Type	Chain	Res	Link	Bond lengths			Bond angles		
					Counts	RMSZ	# Z  > 2	Counts	RMSZ	# Z  > 2
2	5OX	B	501	1	24,25,25	0.45	0	25,26,26	0.96	1 (4%)
2	5OX	A	501	1	24,25,25	0.45	0	25,26,26	1.09	3 (12%)

In the following table, the Chirals column lists the number of chiral outliers, the number of chiral centers analysed, the number of these observed in the model and the number defined in the Chemical Component Dictionary. Similar counts are reported in the Torsion and Rings columns. '-' means no outliers of that kind were identified.

Mol	Type	Chain	Res	Link	Chirals	Torsions	Rings
2	5OX	B	501	1	-	15/24/24/24	-
2	5OX	A	501	1	-	9/24/24/24	-

There are no bond length outliers.

All (4) bond angle outliers are listed below:

Mol	Chain	Res	Type	Atoms	Z	Observed(°)	Ideal(°)
2	A	501	5OX	C21-C22-C23	-2.73	107.60	114.47
2	A	501	5OX	C21-C20-C19	-2.56	108.02	114.60
2	A	501	5OX	C18-C17-C16	-2.26	119.74	125.03
2	B	501	5OX	C18-C17-C16	-2.16	119.98	125.03

There are no chirality outliers.

All (24) torsion outliers are listed below:

Mol	Chain	Res	Type	Atoms
2	A	501	5OX	C16-C17-C18-C19
2	B	501	5OX	C16-C17-C18-C19
2	A	501	5OX	C20-C21-C22-C23
2	B	501	5OX	C19-C20-C21-C22
2	A	501	5OX	C19-C20-C21-C22
2	A	501	5OX	C9-C10-C11-C12
2	A	501	5OX	C7-C8-C9-C10
2	A	501	5OX	C4-C5-C6-C7
2	B	501	5OX	C10-C11-C12-C13
2	B	501	5OX	C7-C8-C9-C10
2	B	501	5OX	C6-C7-C8-C9
2	B	501	5OX	C3-C4-C5-C6
2	A	501	5OX	C1-C2-C3-C4
2	B	501	5OX	C1-C2-C3-C4
2	B	501	5OX	C13-C14-C15-C16
2	B	501	5OX	C12-C13-C14-C15
2	B	501	5OX	C9-C10-C11-C12
2	B	501	5OX	C4-C5-C6-C7
2	A	501	5OX	C21-C22-C23-O25
2	B	501	5OX	C21-C22-C23-O25
2	A	501	5OX	C21-C22-C23-O24
2	B	501	5OX	C21-C22-C23-O24
2	B	501	5OX	C18-C19-C20-C21
2	B	501	5OX	O26-C19-C20-C21

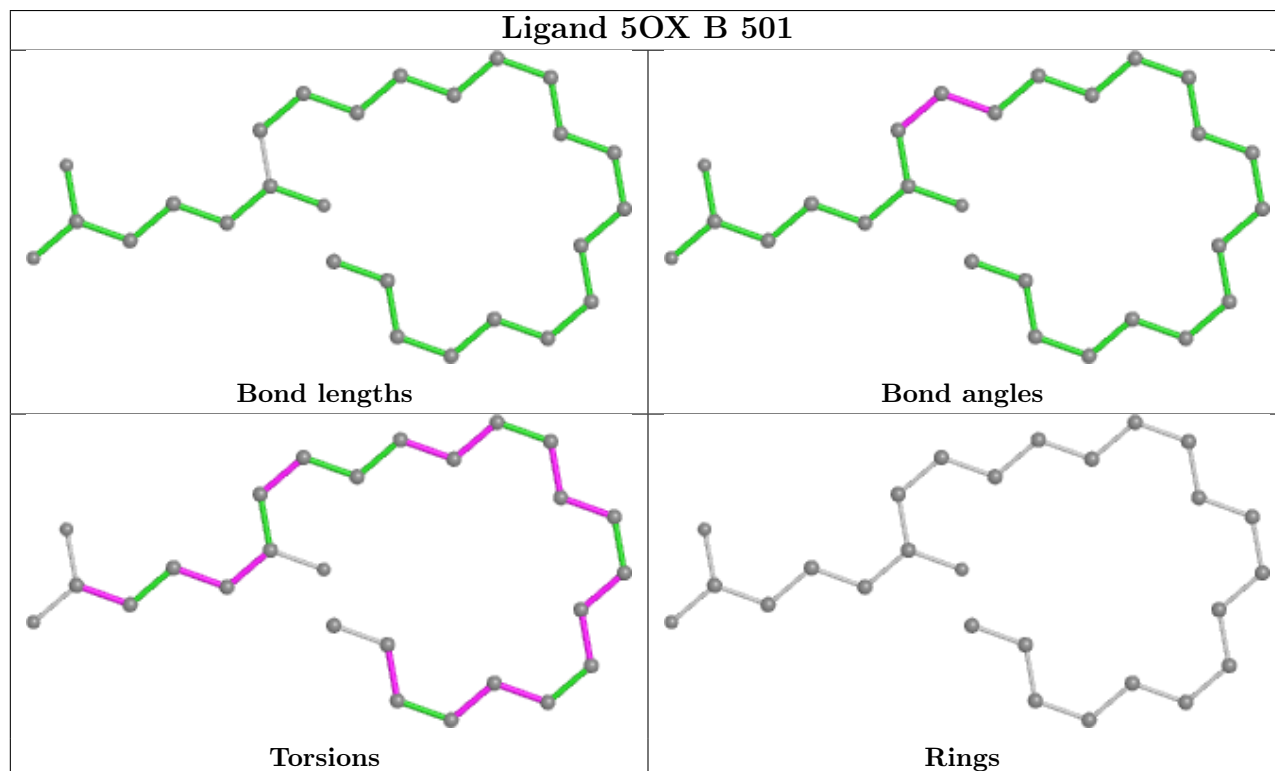
There are no ring outliers.

2 monomers are involved in 37 short contacts:

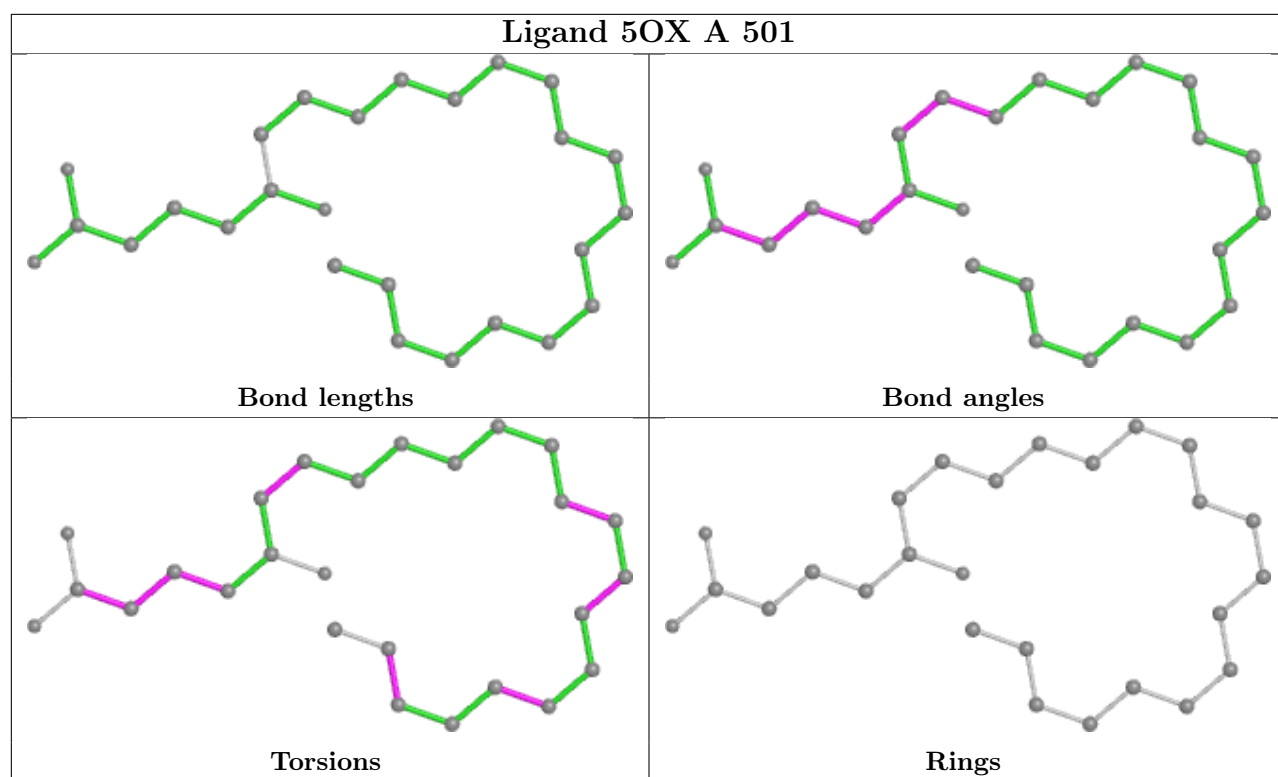
Mol	Chain	Res	Type	Clashes	Symm-Clashes
2	B	501	5OX	22	0
2	A	501	5OX	15	0

The following is a two-dimensional graphical depiction of Mogul quality analysis of bond lengths,

bond angles, torsion angles, and ring geometry for all instances of the Ligand of Interest. In addition, ligands with molecular weight > 250 and outliers as shown on the validation Tables will also be included. For torsion angles, if less than 5% of the Mogul distribution of torsion angles is within 10 degrees of the torsion angle in question, then that torsion angle is considered an outlier. Any bond that is central to one or more torsion angles identified as an outlier by Mogul will be highlighted in the graph. For rings, the root-mean-square deviation (RMSD) between the ring in question and similar rings identified by Mogul is calculated over all ring torsion angles. If the average RMSD is greater than 60 degrees and the minimal RMSD between the ring in question and any Mogul-identified rings is also greater than 60 degrees, then that ring is considered an outlier. The outliers are highlighted in purple. The color gray indicates Mogul did not find sufficient equivalents in the CSD to analyse the geometry.







## 5.7 Other polymers [i](#)

There are no such residues in this entry.

## 5.8 Polymer linkage issues [i](#)

There are no chain breaks in this entry.

## 6 Fit of model and data

### 6.1 Protein, DNA and RNA chains

In the following table, the column labelled ‘#RSRZ > 2’ contains the number (and percentage) of RSRZ outliers, followed by percent RSRZ outliers for the chain as percentile scores relative to all X-ray entries and entries of similar resolution. The OWAB column contains the minimum, median, 95<sup>th</sup> percentile and maximum values of the occupancy-weighted average B-factor per residue. The column labelled ‘Q < 0.9’ lists the number of (and percentage) of residues with an average occupancy less than 0.9.

Mol	Chain	Analysed	<RSRZ>	#RSRZ>2	OWAB(Å <sup>2</sup> )	Q<0.9
1	A	256/276 (92%)	0.57	17 (6%) 18 23	30, 42, 57, 71	0
1	B	254/276 (92%)	1.04	41 (16%) 1 2	30, 43, 67, 75	0
All	All	510/552 (92%)	0.81	58 (11%) 5 7	30, 42, 65, 75	0

All (58) RSRZ outliers are listed below:

Mol	Chain	Res	Type	RSRZ
1	A	260	ASP	5.8
1	B	275	LYS	5.5
1	B	455	VAL	5.4
1	B	454	GLN	5.3
1	B	269	PRO	5.0
1	B	451	GLN	5.0
1	B	357	ARG	4.8
1	B	243	ASP	4.7
1	B	362	ASP	4.7
1	B	240	LYS	4.3
1	B	239	GLY	4.1
1	B	363	PHE	4.0
1	B	456	ILE	3.9
1	B	459	THR	3.8
1	B	453	LEU	3.7
1	A	241	THR	3.5
1	B	209	ALA	3.5
1	A	436	LEU	3.4
1	B	474	LYS	3.3
1	A	259	GLU	3.3
1	B	277	VAL	3.3
1	B	358	LYS	3.2
1	B	457	LYS	3.2
1	A	256	MET	3.2

*Continued on next page...*

*Continued from previous page...*

Mol	Chain	Res	Type	RSRZ
1	B	361	GLY	3.2
1	A	401	LEU	3.1
1	B	263	LYS	3.1
1	A	253	ASN	3.1
1	B	244	LYS	3.0
1	B	450	VAL	2.9
1	B	436	LEU	2.9
1	B	360	PHE	2.8
1	A	262	ILE	2.8
1	B	238	THR	2.7
1	B	245	SER	2.7
1	B	355	SER	2.7
1	B	435	LEU	2.7
1	B	359	PRO	2.7
1	B	387	PHE	2.6
1	B	452	LEU	2.6
1	A	287	PHE	2.6
1	B	279	ILE	2.6
1	B	458	LYS	2.5
1	A	325	ILE	2.5
1	A	427	GLU	2.5
1	B	427	GLU	2.5
1	A	471	GLU	2.4
1	B	260	ASP	2.3
1	B	325	ILE	2.3
1	B	253	ASN	2.3
1	A	435	LEU	2.2
1	A	390	VAL	2.2
1	A	402	ASN	2.2
1	A	426	PRO	2.2
1	B	328	THR	2.1
1	A	429	SER	2.1
1	B	276	GLU	2.0
1	B	249	ILE	2.0

## 6.2 Non-standard residues in protein, DNA, RNA chains [\(i\)](#)

There are no non-standard protein/DNA/RNA residues in this entry.

### 6.3 Carbohydrates [i](#)

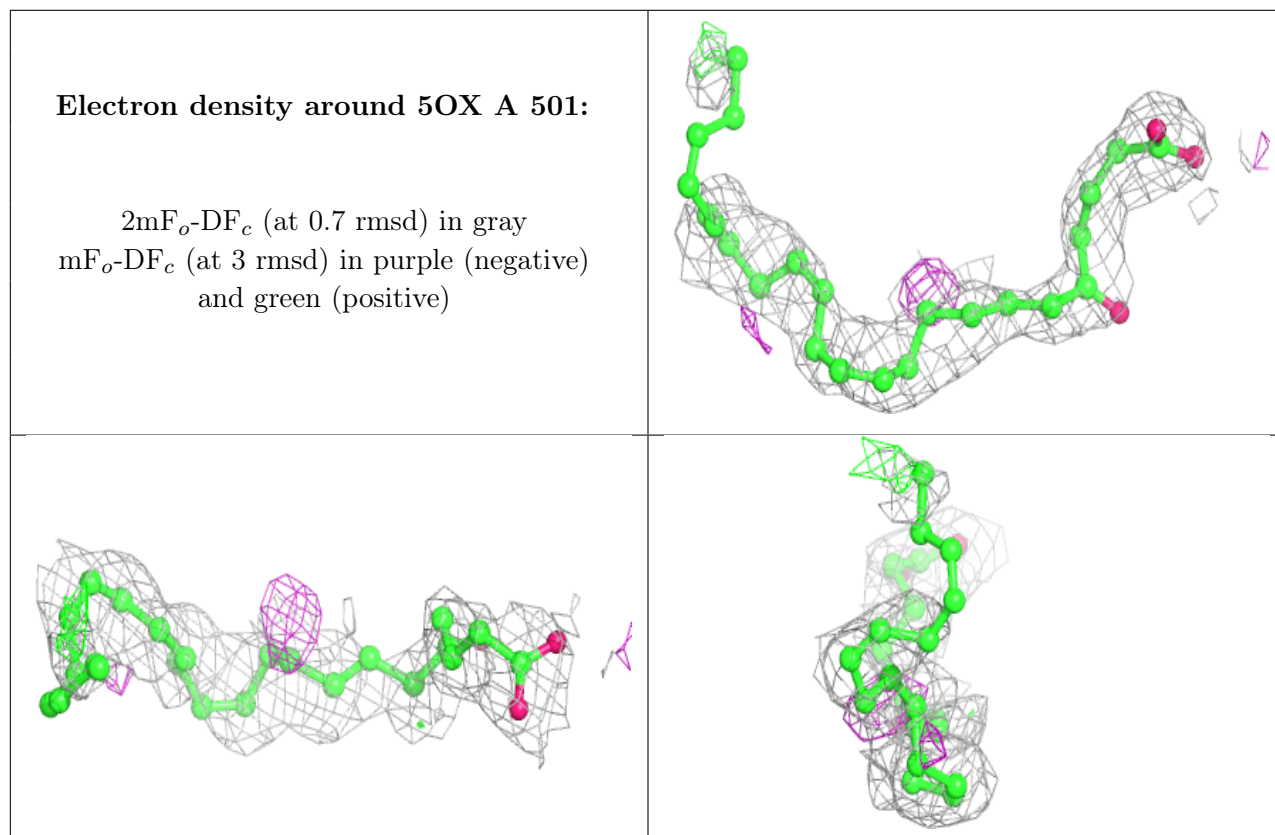
There are no monosaccharides in this entry.

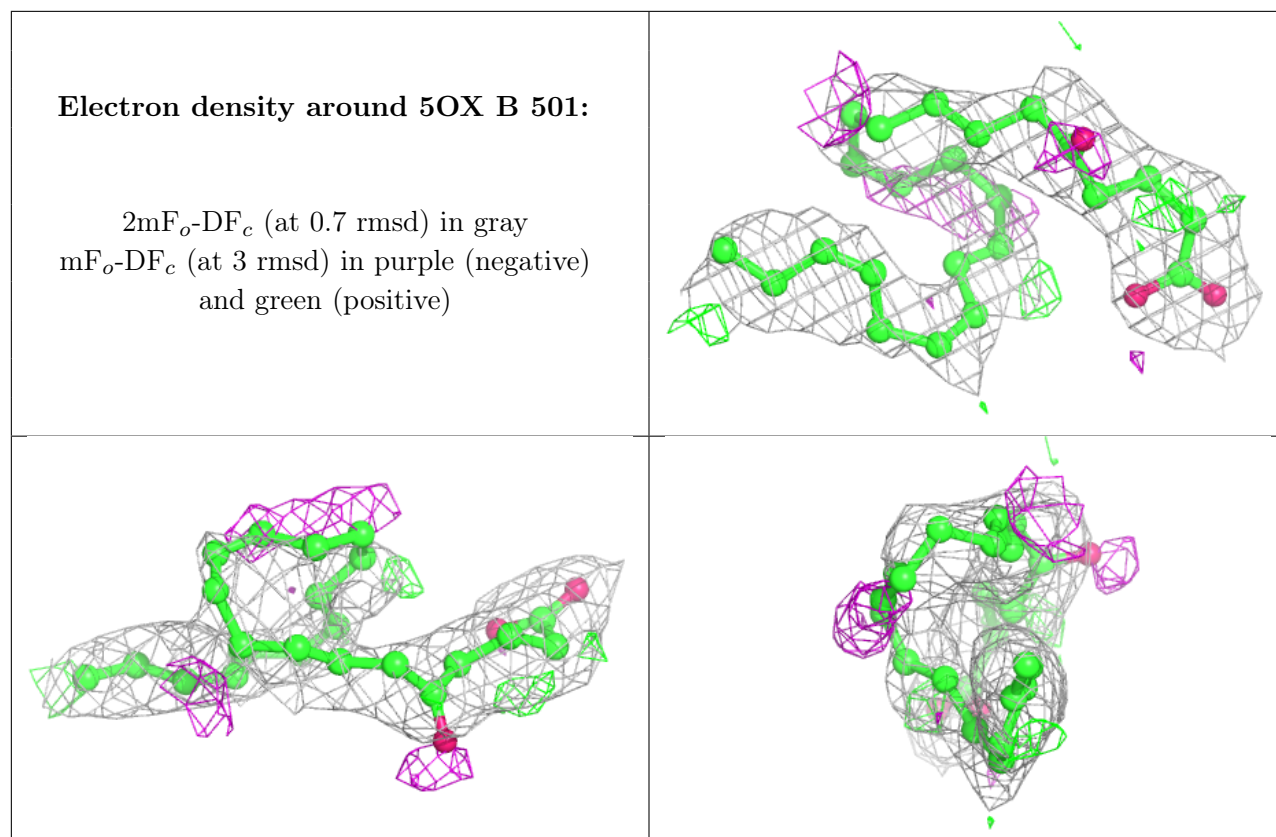
### 6.4 Ligands [i](#)

In the following table, the Atoms column lists the number of modelled atoms in the group and the number defined in the chemical component dictionary. The B-factors column lists the minimum, median, 95<sup>th</sup> percentile and maximum values of B factors of atoms in the group. The column labelled 'Q<0.9' lists the number of atoms with occupancy less than 0.9.

Mol	Type	Chain	Res	Atoms	RSCC	RSR	B-factors(Å <sup>2</sup> )	Q<0.9
2	5OX	A	501	26/26	0.60	0.48	90,102,116,124	0
2	5OX	B	501	26/26	0.73	0.39	58,66,75,78	0

The following is a graphical depiction of the model fit to experimental electron density of all instances of the Ligand of Interest. In addition, ligands with molecular weight > 250 and outliers as shown on the geometry validation Tables will also be included. Each fit is shown from different orientation to approximate a three-dimensional view.





## 6.5 Other polymers [i](#)

There are no such residues in this entry.