



# Full wwPDB X-ray Structure Validation Report ⓘ

Nov 3, 2023 – 04:28 AM EDT

PDB ID : 3WFL  
Title : Crstal structure of glycoside hydrolase family 5 beta-mannanase from Talaromyces trachyspermus  
Authors : Suzuki, K.; Ichinose, H.; Kamino, K.; Ogasawara, W.; Kaneko, S.; Fushinobu, S.  
Deposited on : 2013-07-19  
Resolution : 1.60 Å(reported)

This is a Full wwPDB X-ray Structure Validation Report for a publicly released PDB entry.

We welcome your comments at [validation@mail.wwpdb.org](mailto:validation@mail.wwpdb.org)

A user guide is available at

<https://www.wwpdb.org/validation/2017/XrayValidationReportHelp>

with specific help available everywhere you see the ⓘ symbol.

The types of validation reports are described at

<http://www.wwpdb.org/validation/2017/FAQs#types>.

---

The following versions of software and data (see [references ⓘ](#)) were used in the production of this report:

MolProbity : 4.02b-467  
Mogul : 1.8.5 (274361), CSD as541be (2020)  
Xtriage (Phenix) : 1.13  
EDS : 2.36  
Percentile statistics : 20191225.v01 (using entries in the PDB archive December 25th 2019)  
Refmac : 5.8.0158  
CCP4 : 7.0.044 (Gargrove)  
Ideal geometry (proteins) : Engh & Huber (2001)  
Ideal geometry (DNA, RNA) : Parkinson et al. (1996)  
Validation Pipeline (wwPDB-VP) : 2.36

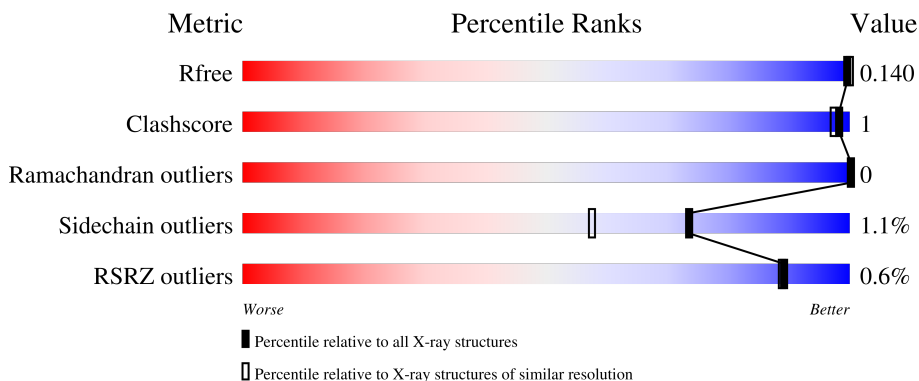
# 1 Overall quality at a glance

The following experimental techniques were used to determine the structure:

*X-RAY DIFFRACTION*

The reported resolution of this entry is 1.60 Å.

Percentile scores (ranging between 0-100) for global validation metrics of the entry are shown in the following graphic. The table shows the number of entries on which the scores are based.



Metric	Whole archive (#Entries)	Similar resolution (#Entries, resolution range(Å))
$R_{free}$	130704	3398 (1.60-1.60)
Clashscore	141614	3665 (1.60-1.60)
Ramachandran outliers	138981	3564 (1.60-1.60)
Sidechain outliers	138945	3563 (1.60-1.60)
RSRZ outliers	127900	3321 (1.60-1.60)

The table below summarises the geometric issues observed across the polymeric chains and their fit to the electron density. The red, orange, yellow and green segments of the lower bar indicate the fraction of residues that contain outliers for  $\geq 3$ , 2, 1 and 0 types of geometric quality criteria respectively. A grey segment represents the fraction of residues that are not modelled. The numeric value for each fraction is indicated below the corresponding segment, with a dot representing fractions  $\leq 5\%$ . The upper red bar (where present) indicates the fraction of residues that have poor fit to the electron density. The numeric value is given above the bar.

Mol	Chain	Length	Quality of chain
1	A	342	

The following table lists non-polymeric compounds, carbohydrate monomers and non-standard residues in protein, DNA, RNA chains that are outliers for geometric or electron-density-fit criteria:

Mol	Type	Chain	Res	Chirality	Geometry	Clashes	Electron density
4	GOL	A	409	-	X	-	-

## 2 Entry composition [i](#)

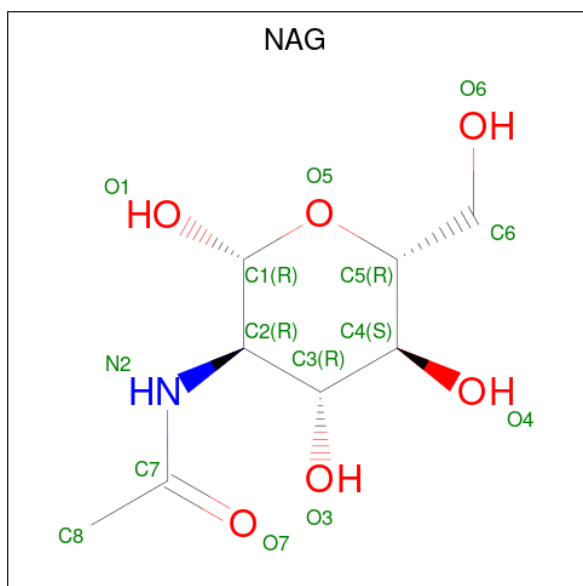
There are 6 unique types of molecules in this entry. The entry contains 3128 atoms, of which 0 are hydrogens and 0 are deuteriums.

In the tables below, the ZeroOcc column contains the number of atoms modelled with zero occupancy, the AltConf column contains the number of residues with at least one atom in alternate conformation and the Trace column contains the number of residues modelled with at most 2 atoms.

- Molecule 1 is a protein called beta-mannanase.

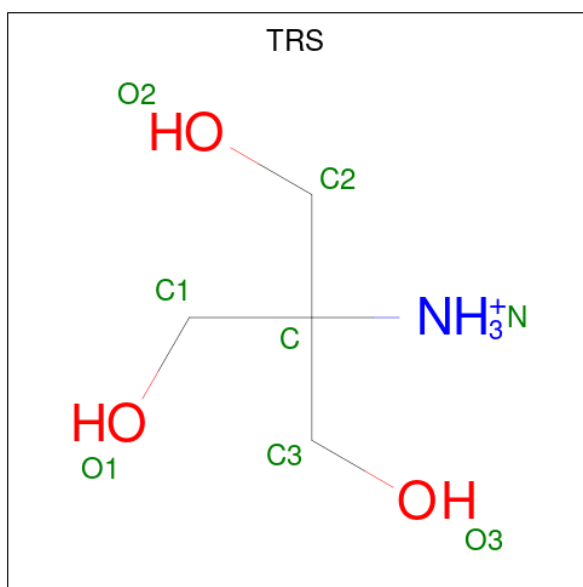
Mol	Chain	Residues	Atoms					ZeroOcc	AltConf	Trace
			Total	C	N	O	S			
1	A	341	2614	1653	419	534	8	0	0	0

- Molecule 2 is 2-acetamido-2-deoxy-beta-D-glucopyranose (three-letter code: NAG) (formula:  $C_8H_{15}NO_6$ ).



Mol	Chain	Residues	Atoms				ZeroOcc	AltConf
			Total	C	N	O		
2	A	1	14	8	1	5	0	0

- Molecule 3 is 2-AMINO-2-HYDROXYMETHYL-PROPANE-1,3-DIOL (three-letter code: TRS) (formula:  $C_4H_{12}NO_3$ ).



Mol	Chain	Residues	Atoms				ZeroOcc	AltConf
			Total	C	N	O		
3	A	1	8	4	1	3	0	0

- Molecule 4 is GLYCEROL (three-letter code: GOL) (formula: C<sub>3</sub>H<sub>8</sub>O<sub>3</sub>).



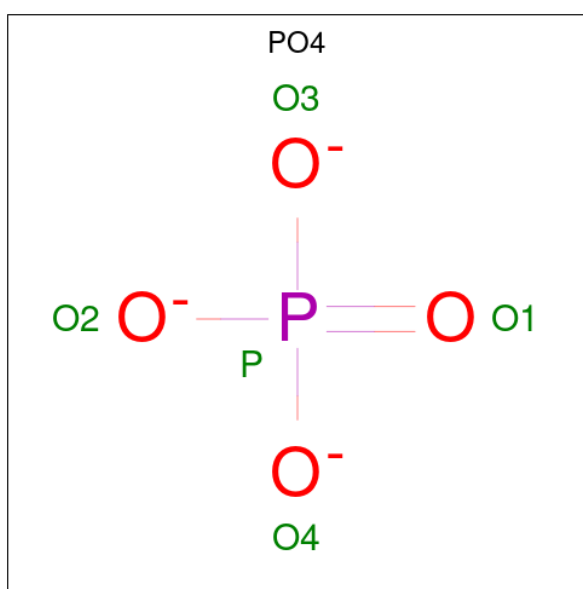
Mol	Chain	Residues	Atoms			ZeroOcc	AltConf
			Total	C	O		
4	A	1	6	3	3	0	0
4	A	1	6	3	3	0	0
4	A	1	6	3	3	0	0

*Continued on next page...*

Continued from previous page...

Mol	Chain	Residues	Atoms			ZeroOcc	AltConf
4	A	1	Total	C	O	0	0
			6	3	3		
4	A	1	Total	C	O	0	0
			6	3	3		
4	A	1	Total	C	O	0	0
			6	3	3		
4	A	1	Total	C	O	0	0
			6	3	3		

- Molecule 5 is PHOSPHATE ION (three-letter code: PO4) (formula: O<sub>4</sub>P).



Mol	Chain	Residues	Atoms			ZeroOcc	AltConf
5	A	1	Total	O	P	0	0
			5	4	1		
5	A	1	Total	O	P	0	0
			5	4	1		

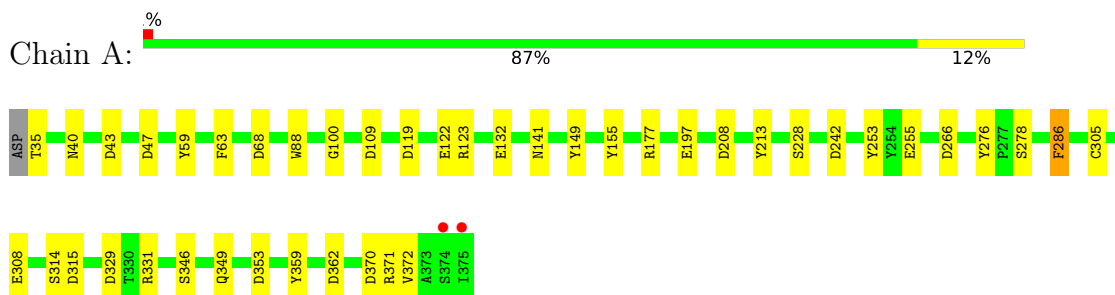
- Molecule 6 is water.

Mol	Chain	Residues	Atoms		ZeroOcc	AltConf
6	A	440	Total	O	0	0
			440	440		

### 3 Residue-property plots [i](#)

These plots are drawn for all protein, RNA, DNA and oligosaccharide chains in the entry. The first graphic for a chain summarises the proportions of the various outlier classes displayed in the second graphic. The second graphic shows the sequence view annotated by issues in geometry and electron density. Residues are color-coded according to the number of geometric quality criteria for which they contain at least one outlier: green = 0, yellow = 1, orange = 2 and red = 3 or more. A red dot above a residue indicates a poor fit to the electron density ( $RSRZ > 2$ ). Stretches of 2 or more consecutive residues without any outlier are shown as a green connector. Residues present in the sample, but not in the model, are shown in grey.

- Molecule 1: beta-mannanase



## 4 Data and refinement statistics

Property	Value	Source
Space group	P 21 21 21	Depositor
Cell constants a, b, c, $\alpha$ , $\beta$ , $\gamma$	58.43Å 75.97Å 79.72Å 90.00° 90.00° 90.00°	Depositor
Resolution (Å)	19.28 – 1.60 19.28 – 1.60	Depositor EDS
% Data completeness (in resolution range)	99.1 (19.28-1.60) 99.2 (19.28-1.60)	Depositor EDS
$R_{merge}$	(Not available)	Depositor
$R_{sym}$	0.07	Depositor
$\langle I/\sigma(I) \rangle$ <sup>1</sup>	10.72 (at 1.60Å)	Xtrriage
Refinement program	REFMAC 5.7.0029	Depositor
R, $R_{free}$	0.114 , 0.138 0.115 , 0.140	Depositor DCC
$R_{free}$ test set	2389 reflections (5.07%)	wwPDB-VP
Wilson B-factor (Å <sup>2</sup> )	7.0	Xtrriage
Anisotropy	0.041	Xtrriage
Bulk solvent $k_{sol}$ (e/Å <sup>3</sup> ), $B_{sol}$ (Å <sup>2</sup> )	0.47 , 63.1	EDS
L-test for twinning <sup>2</sup>	$\langle  L  \rangle = 0.49$ , $\langle L^2 \rangle = 0.33$	Xtrriage
Estimated twinning fraction	0.013 for -h,l,k	Xtrriage
$F_o, F_c$ correlation	0.96	EDS
Total number of atoms	3128	wwPDB-VP
Average B, all atoms (Å <sup>2</sup> )	9.0	wwPDB-VP

Xtrriage's analysis on translational NCS is as follows: *The largest off-origin peak in the Patterson function is 5.05% of the height of the origin peak. No significant pseudotranslation is detected.*

<sup>1</sup>Intensities estimated from amplitudes.

<sup>2</sup>Theoretical values of  $\langle |L| \rangle$ ,  $\langle L^2 \rangle$  for acentric reflections are 0.5, 0.333 respectively for untwinned datasets, and 0.375, 0.2 for perfectly twinned datasets.

## 5 Model quality [i](#)

### 5.1 Standard geometry [i](#)

Bond lengths and bond angles in the following residue types are not validated in this section: GOL, PO4, NAG, TRS

The Z score for a bond length (or angle) is the number of standard deviations the observed value is removed from the expected value. A bond length (or angle) with  $|Z| > 5$  is considered an outlier worth inspection. RMSZ is the root-mean-square of all Z scores of the bond lengths (or angles).

Mol	Chain	Bond lengths		Bond angles	
		RMSZ	# Z  >5	RMSZ	# Z  >5
1	A	1.33	19/2686 (0.7%)	1.30	30/3673 (0.8%)

All (19) bond length outliers are listed below:

Mol	Chain	Res	Type	Atoms	Z	Observed(Å)	Ideal(Å)
1	A	278	SER	CB-OG	-8.41	1.31	1.42
1	A	132	GLU	CD-OE1	8.03	1.34	1.25
1	A	149	TYR	CZ-OH	7.54	1.50	1.37
1	A	359	TYR	CE1-CZ	-7.01	1.29	1.38
1	A	100	GLY	C-O	6.75	1.34	1.23
1	A	255	GLU	CD-OE2	6.37	1.32	1.25
1	A	255	GLU	CD-OE1	-6.12	1.19	1.25
1	A	308	GLU	CD-OE2	6.07	1.32	1.25
1	A	370	ASP	CB-CG	-6.04	1.39	1.51
1	A	40	ASN	CG-ND2	-5.85	1.18	1.32
1	A	122	GLU	CD-OE1	-5.61	1.19	1.25
1	A	346	SER	CB-OG	-5.55	1.35	1.42
1	A	155	TYR	CG-CD2	5.34	1.46	1.39
1	A	372	VAL	CB-CG2	5.22	1.63	1.52
1	A	59	TYR	CE1-CZ	-5.18	1.31	1.38
1	A	35	THR	CB-CG2	-5.15	1.35	1.52
1	A	228	SER	CB-OG	-5.14	1.35	1.42
1	A	242	ASP	C-O	5.10	1.33	1.23
1	A	314	SER	CB-OG	-5.08	1.35	1.42

All (30) bond angle outliers are listed below:

Mol	Chain	Res	Type	Atoms	Z	Observed(°)	Ideal(°)
1	A	331	ARG	NE-CZ-NH1	13.90	127.25	120.30
1	A	47	ASP	CB-CG-OD2	-10.57	108.79	118.30

*Continued on next page...*



Continued from previous page...

Mol	Chain	Res	Type	Atoms	Z	Observed(°)	Ideal(°)
1	A	109	ASP	CB-CG-OD2	-9.81	109.47	118.30
1	A	43	ASP	CB-CG-OD2	-9.41	109.83	118.30
1	A	331	ARG	NE-CZ-NH2	-9.15	115.73	120.30
1	A	119	ASP	CB-CG-OD1	8.32	125.79	118.30
1	A	371	ARG	NE-CZ-NH1	-8.04	116.28	120.30
1	A	68	ASP	CB-CG-OD2	-7.80	111.28	118.30
1	A	109	ASP	CB-CG-OD1	7.67	125.20	118.30
1	A	276	TYR	CB-CG-CD2	7.09	125.26	121.00
1	A	43	ASP	CB-CG-OD1	6.99	124.59	118.30
1	A	155	TYR	CB-CG-CD2	6.69	125.01	121.00
1	A	242	ASP	CB-CG-OD2	-6.65	112.31	118.30
1	A	362	ASP	CB-CG-OD2	-6.50	112.45	118.30
1	A	370	ASP	CB-CG-OD1	6.38	124.04	118.30
1	A	149	TYR	CG-CD1-CE1	-6.26	116.29	121.30
1	A	329	ASP	CB-CG-OD2	-6.18	112.73	118.30
1	A	266	ASP	CB-CG-OD2	-6.17	112.75	118.30
1	A	208	ASP	CB-CG-OD2	6.16	123.84	118.30
1	A	353	ASP	CB-CG-OD2	-6.04	112.86	118.30
1	A	59	TYR	CZ-CE2-CD2	-5.97	114.43	119.80
1	A	63	PHE	CB-CG-CD1	5.89	124.92	120.80
1	A	213	TYR	CB-CG-CD2	-5.86	117.49	121.00
1	A	177	ARG	NE-CZ-NH2	-5.51	117.55	120.30
1	A	315	ASP	CB-CG-OD2	-5.46	113.39	118.30
1	A	266	ASP	CB-CG-OD1	5.31	123.08	118.30
1	A	359	TYR	CZ-CE2-CD2	-5.29	115.04	119.80
1	A	47	ASP	OD1-CG-OD2	5.22	133.21	123.30
1	A	123	ARG	NE-CZ-NH1	5.03	122.82	120.30
1	A	286	PHE	CB-CG-CD1	5.00	124.30	120.80

There are no chirality outliers.

There are no planarity outliers.

## 5.2 Too-close contacts [i](#)

In the following table, the Non-H and H(model) columns list the number of non-hydrogen atoms and hydrogen atoms in the chain respectively. The H(added) column lists the number of hydrogen atoms added and optimized by MolProbity. The Clashes column lists the number of clashes within the asymmetric unit, whereas Symm-Clashes lists symmetry-related clashes.

Mol	Chain	Non-H	H(model)	H(added)	Clashes	Symm-Clashes
1	A	2614	0	2383	3	0

Continued on next page...

Continued from previous page...

Mol	Chain	Non-H	H(model)	H(added)	Clashes	Symm-Clashes
2	A	14	0	13	1	0
3	A	8	0	12	0	0
4	A	42	0	55	0	0
5	A	10	0	0	0	0
6	A	440	0	0	1	0
All	All	3128	0	2463	3	0

The all-atom clashscore is defined as the number of clashes found per 1000 atoms (including hydrogen atoms). The all-atom clashscore for this structure is 1.

All (3) close contacts within the same asymmetric unit are listed below, sorted by their clash magnitude.

Atom-1	Atom-2	Interatomic distance (Å)	Clash overlap (Å)
1:A:349:GLN:HG3	6:A:853:HOH:O	1.91	0.70
1:A:253:TYR:CD2	2:A:401:NAG:H82	2.46	0.51
1:A:141:ASN:HA	1:A:197:GLU:O	2.21	0.40

There are no symmetry-related clashes.

## 5.3 Torsion angles [i](#)

### 5.3.1 Protein backbone [i](#)

In the following table, the Percentiles column shows the percent Ramachandran outliers of the chain as a percentile score with respect to all X-ray entries followed by that with respect to entries of similar resolution.

The Analysed column shows the number of residues for which the backbone conformation was analysed, and the total number of residues.

Mol	Chain	Analysed	Favoured	Allowed	Outliers	Percentiles
1	A	339/342 (99%)	333 (98%)	6 (2%)	0	<a href="#">100</a> <a href="#">100</a>

There are no Ramachandran outliers to report.

### 5.3.2 Protein sidechains [i](#)

In the following table, the Percentiles column shows the percent sidechain outliers of the chain as a percentile score with respect to all X-ray entries followed by that with respect to entries of similar resolution.

The Analysed column shows the number of residues for which the sidechain conformation was analysed, and the total number of residues.

Mol	Chain	Analysed	Rotameric	Outliers	Percentiles
1	A	278/279 (100%)	275 (99%)	3 (1%)	73 57

All (3) residues with a non-rotameric sidechain are listed below:

Mol	Chain	Res	Type
1	A	88	TRP
1	A	286	PHE
1	A	305	CYS

Sometimes sidechains can be flipped to improve hydrogen bonding and reduce clashes. There are no such sidechains identified.

### 5.3.3 RNA [i](#)

There are no RNA molecules in this entry.

## 5.4 Non-standard residues in protein, DNA, RNA chains [i](#)

There are no non-standard protein/DNA/RNA residues in this entry.

## 5.5 Carbohydrates [i](#)

There are no monosaccharides in this entry.

## 5.6 Ligand geometry [i](#)

11 ligands are modelled in this entry.

In the following table, the Counts columns list the number of bonds (or angles) for which Mogul statistics could be retrieved, the number of bonds (or angles) that are observed in the model and the number of bonds (or angles) that are defined in the Chemical Component Dictionary. The Link column lists molecule types, if any, to which the group is linked. The Z score for a bond length (or angle) is the number of standard deviations the observed value is removed from the expected value. A bond length (or angle) with  $|Z| > 2$  is considered an outlier worth inspection. RMSZ is the root-mean-square of all Z scores of the bond lengths (or angles).

Mol	Type	Chain	Res	Link	Bond lengths			Bond angles		
					Counts	RMSZ	# Z  > 2	Counts	RMSZ	# Z  > 2
2	NAG	A	401	1	14,14,15	1.35	2 (14%)	17,19,21	1.84	8 (47%)
4	GOL	A	403	-	5,5,5	0.93	0	5,5,5	0.69	0
4	GOL	A	408	-	5,5,5	0.93	0	5,5,5	0.92	0
5	PO4	A	411	-	4,4,4	0.83	0	6,6,6	1.00	0
4	GOL	A	407	-	5,5,5	0.32	0	5,5,5	1.30	1 (20%)
4	GOL	A	406	-	5,5,5	1.38	1 (20%)	5,5,5	0.94	0
5	PO4	A	410	-	4,4,4	1.57	1 (25%)	6,6,6	2.66	2 (33%)
4	GOL	A	409	-	5,5,5	2.18	2 (40%)	5,5,5	4.06	4 (80%)
4	GOL	A	404	-	5,5,5	1.22	1 (20%)	5,5,5	1.24	1 (20%)
3	TRS	A	402	-	7,7,7	0.88	0	9,9,9	0.75	0
4	GOL	A	405	-	5,5,5	1.49	1 (20%)	5,5,5	0.85	0

In the following table, the Chirals column lists the number of chiral outliers, the number of chiral centers analysed, the number of these observed in the model and the number defined in the Chemical Component Dictionary. Similar counts are reported in the Torsion and Rings columns. '-' means no outliers of that kind were identified.

Mol	Type	Chain	Res	Link	Chirals	Torsions	Rings
2	NAG	A	401	1	-	0/6/23/26	0/1/1/1
4	GOL	A	403	-	-	0/4/4/4	-
4	GOL	A	408	-	-	0/4/4/4	-
4	GOL	A	407	-	-	0/4/4/4	-
4	GOL	A	406	-	-	0/4/4/4	-
4	GOL	A	409	-	-	4/4/4/4	-
4	GOL	A	404	-	-	0/4/4/4	-
3	TRS	A	402	-	-	0/9/9/9	-
4	GOL	A	405	-	-	0/4/4/4	-

All (8) bond length outliers are listed below:

Mol	Chain	Res	Type	Atoms	Z	Observed(Å)	Ideal(Å)
4	A	409	GOL	O3-C3	4.27	1.60	1.42
2	A	401	NAG	O4-C4	3.07	1.50	1.43
5	A	410	PO4	P-O1	2.89	1.57	1.50
4	A	406	GOL	O2-C2	-2.49	1.36	1.43
4	A	405	GOL	O2-C2	2.39	1.50	1.43
2	A	401	NAG	C3-C2	2.36	1.57	1.52
4	A	404	GOL	O2-C2	2.13	1.49	1.43
4	A	409	GOL	C3-C2	2.07	1.60	1.51

All (16) bond angle outliers are listed below:

Mol	Chain	Res	Type	Atoms	Z	Observed(°)	Ideal(°)
4	A	409	GOL	O3-C3-C2	7.22	144.81	110.20
5	A	410	PO4	O4-P-O2	4.79	123.35	107.97
4	A	409	GOL	O2-C2-C1	-4.11	91.04	109.12
5	A	410	PO4	O4-P-O3	-3.96	95.27	107.97
2	A	401	NAG	C1-C2-N2	3.04	115.68	110.49
2	A	401	NAG	O7-C7-N2	-2.86	116.69	121.95
2	A	401	NAG	O5-C5-C6	-2.81	102.79	107.20
4	A	409	GOL	C3-C2-C1	2.67	122.10	111.70
2	A	401	NAG	O5-C1-C2	-2.46	107.40	111.29
2	A	401	NAG	O7-C7-C8	2.41	126.54	122.06
4	A	409	GOL	O1-C1-C2	2.36	121.52	110.20
2	A	401	NAG	C4-C3-C2	-2.25	107.72	111.02
2	A	401	NAG	O4-C4-C5	-2.21	103.80	109.30
4	A	404	GOL	C3-C2-C1	-2.17	103.28	111.70
4	A	407	GOL	C3-C2-C1	2.14	120.03	111.70
2	A	401	NAG	C1-O5-C5	-2.08	109.38	112.19

There are no chirality outliers.

All (4) torsion outliers are listed below:

Mol	Chain	Res	Type	Atoms
4	A	409	GOL	O1-C1-C2-C3
4	A	409	GOL	C1-C2-C3-O3
4	A	409	GOL	O1-C1-C2-O2
4	A	409	GOL	O2-C2-C3-O3

There are no ring outliers.

1 monomer is involved in 1 short contact:

Mol	Chain	Res	Type	Clashes	Symm-Clashes
2	A	401	NAG	1	0

## 5.7 Other polymers [i](#)

There are no such residues in this entry.

## 5.8 Polymer linkage issues [i](#)

There are no chain breaks in this entry.

## 6 Fit of model and data [i](#)

### 6.1 Protein, DNA and RNA chains [i](#)

In the following table, the column labelled '#RSRZ > 2' contains the number (and percentage) of RSRZ outliers, followed by percent RSRZ outliers for the chain as percentile scores relative to all X-ray entries and entries of similar resolution. The OWAB column contains the minimum, median, 95<sup>th</sup> percentile and maximum values of the occupancy-weighted average B-factor per residue. The column labelled 'Q < 0.9' lists the number of (and percentage) of residues with an average occupancy less than 0.9.

Mol	Chain	Analysed	<RSRZ>	#RSRZ>2	OWAB(Å <sup>2</sup> )	Q<0.9
1	A	341/342 (99%)	-0.53	2 (0%) 89 89	3, 6, 14, 27	0

All (2) RSRZ outliers are listed below:

Mol	Chain	Res	Type	RSRZ
1	A	375	ILE	3.3
1	A	374	SER	2.2

### 6.2 Non-standard residues in protein, DNA, RNA chains [i](#)

There are no non-standard protein/DNA/RNA residues in this entry.

### 6.3 Carbohydrates [i](#)

There are no monosaccharides in this entry.

### 6.4 Ligands [i](#)

In the following table, the Atoms column lists the number of modelled atoms in the group and the number defined in the chemical component dictionary. The B-factors column lists the minimum, median, 95<sup>th</sup> percentile and maximum values of B factors of atoms in the group. The column labelled 'Q < 0.9' lists the number of atoms with occupancy less than 0.9.

Mol	Type	Chain	Res	Atoms	RSCC	RSR	B-factors(Å <sup>2</sup> )	Q<0.9
4	GOL	A	409	6/6	0.86	0.14	17,21,22,40	0
4	GOL	A	407	6/6	0.90	0.12	17,23,25,27	0
4	GOL	A	408	6/6	0.93	0.12	14,20,22,26	0
4	GOL	A	405	6/6	0.93	0.10	11,17,19,21	0
5	PO4	A	410	5/5	0.93	0.20	18,22,25,29	0

*Continued on next page...*

*Continued from previous page...*

Mol	Type	Chain	Res	Atoms	RSCC	RSR	B-factors( $\text{\AA}^2$ )	Q<0.9
4	GOL	A	404	6/6	0.95	0.08	7,13,15,24	0
4	GOL	A	406	6/6	0.95	0.10	12,14,15,17	0
4	GOL	A	403	6/6	0.96	0.09	10,13,14,15	0
2	NAG	A	401	14/15	0.96	0.09	8,10,14,15	0
5	PO4	A	411	5/5	0.96	0.19	20,28,28,33	0
3	TRS	A	402	8/8	0.98	0.05	4,4,6,7	0

## 6.5 Other polymers [i](#)

There are no such residues in this entry.