



Full wwPDB X-ray Structure Validation Report ⓘ

Nov 7, 2023 – 06:36 AM EST

PDB ID : 3VWR
Title : Crystal structure of 6-aminohexanoate-dimer hydrolase S112A/G181D/R187
G/H266N/D370Y mutant complexd with 6-aminohexanoate
Authors : Kawashima, Y.; Shibata, N.; Negoro, S.; Higuchi, Y.
Deposited on : 2012-08-30
Resolution : 1.65 Å(reported)

This is a Full wwPDB X-ray Structure Validation Report for a publicly released PDB entry.

We welcome your comments at validation@mail.wwpdb.org

A user guide is available at

<https://www.wwpdb.org/validation/2017/XrayValidationReportHelp>

with specific help available everywhere you see the ⓘ symbol.

The types of validation reports are described at

<http://www.wwpdb.org/validation/2017/FAQs#types>.

The following versions of software and data (see [references ⓘ](#)) were used in the production of this report:

MolProbity : 4.02b-467
Mogul : 1.8.5 (274361), CSD as541be (2020)
Xtriage (Phenix) : 1.13
EDS : 2.36
Percentile statistics : 20191225.v01 (using entries in the PDB archive December 25th 2019)
Refmac : 5.8.0158
CCP4 : 7.0.044 (Gargrove)
Ideal geometry (proteins) : Engh & Huber (2001)
Ideal geometry (DNA, RNA) : Parkinson et al. (1996)
Validation Pipeline (wwPDB-VP) : 2.36

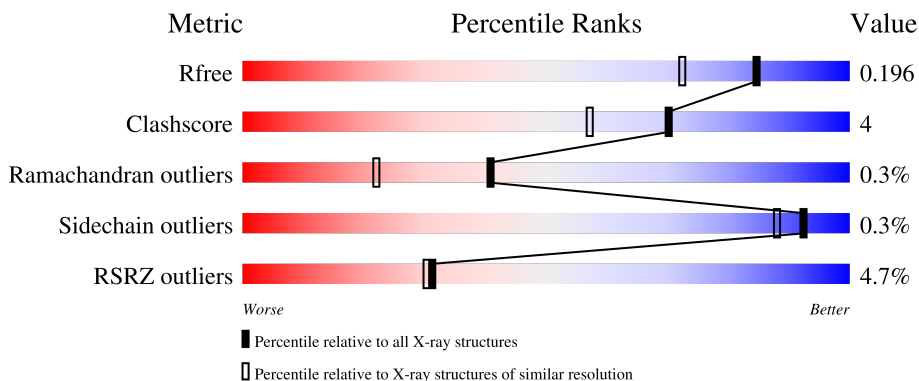
1 Overall quality at a glance

The following experimental techniques were used to determine the structure:

X-RAY DIFFRACTION

The reported resolution of this entry is 1.65 Å.

Percentile scores (ranging between 0-100) for global validation metrics of the entry are shown in the following graphic. The table shows the number of entries on which the scores are based.



Metric	Whole archive (#Entries)	Similar resolution (#Entries, resolution range(Å))
R_{free}	130704	1827 (1.66-1.66)
Clashscore	141614	1931 (1.66-1.66)
Ramachandran outliers	138981	1891 (1.66-1.66)
Sidechain outliers	138945	1891 (1.66-1.66)
RSRZ outliers	127900	1791 (1.66-1.66)

The table below summarises the geometric issues observed across the polymeric chains and their fit to the electron density. The red, orange, yellow and green segments of the lower bar indicate the fraction of residues that contain outliers for ≥ 3 , 2, 1 and 0 types of geometric quality criteria respectively. A grey segment represents the fraction of residues that are not modelled. The numeric value for each fraction is indicated below the corresponding segment, with a dot representing fractions $\leq 5\%$. The upper red bar (where present) indicates the fraction of residues that have poor fit to the electron density. The numeric value is given above the bar.

Mol	Chain	Length	Quality of chain
1	A	392	

2 Entry composition [i](#)

There are 6 unique types of molecules in this entry. The entry contains 3407 atoms, of which 0 are hydrogens and 0 are deuteriums.

In the tables below, the ZeroOcc column contains the number of atoms modelled with zero occupancy, the AltConf column contains the number of residues with at least one atom in alternate conformation and the Trace column contains the number of residues modelled with at most 2 atoms.

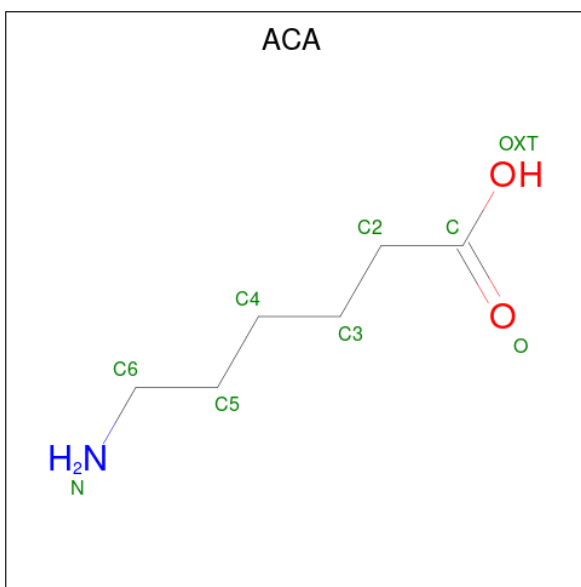
- Molecule 1 is a protein called 6-aminohexanoate-dimer hydrolase.

Mol	Chain	Residues	Atoms					ZeroOcc	AltConf	Trace
			Total	C	N	O	S			
1	A	384	2957	1849	524	574	10	0	0	0

There are 5 discrepancies between the modelled and reference sequences:

Chain	Residue	Modelled	Actual	Comment	Reference
A	112	ALA	SER	engineered mutation	UNP P07062
A	181	ASP	GLY	engineered mutation	UNP P07062
A	187	GLY	ARG	engineered mutation	UNP P07062
A	266	ASN	HIS	engineered mutation	UNP P07062
A	370	TYR	ASP	engineered mutation	UNP P07062

- Molecule 2 is 6-AMINOHEXANOIC ACID (three-letter code: ACA) (formula: C₆H₁₃NO₂).



Mol	Chain	Residues	Atoms				ZeroOcc	AltConf
			Total	C	N	O		
2	A	1	9	6	1	2	0	0

- Molecule 3 is GLYCEROL (three-letter code: GOL) (formula: $C_3H_8O_3$).



Mol	Chain	Residues	Atoms	ZeroOcc	AltConf
3	A	1	Total C O 6 3 3	0	0
3	A	1	Total C O 6 3 3	0	0
3	A	1	Total C O 6 3 3	0	0
3	A	1	Total C O 6 3 3	0	0
3	A	1	Total C O 6 3 3	0	0

- Molecule 4 is 2-(N-MORPHOLINO)-ETHANESULFONIC ACID (three-letter code: MES) (formula: $C_6H_{13}NO_4S$).



Mol	Chain	Residues	Atoms					ZeroOcc	AltConf
			Total	C	N	O	S		
4	A	1	12	6	1	4	1	0	0
4	A	1	12	6	1	4	1	0	0

- Molecule 5 is SULFATE ION (three-letter code: SO₄) (formula: O₄S).



Mol	Chain	Residues	Atoms		ZeroOcc	AltConf
			Total	O S		
5	A	1	5	4 1	0	0

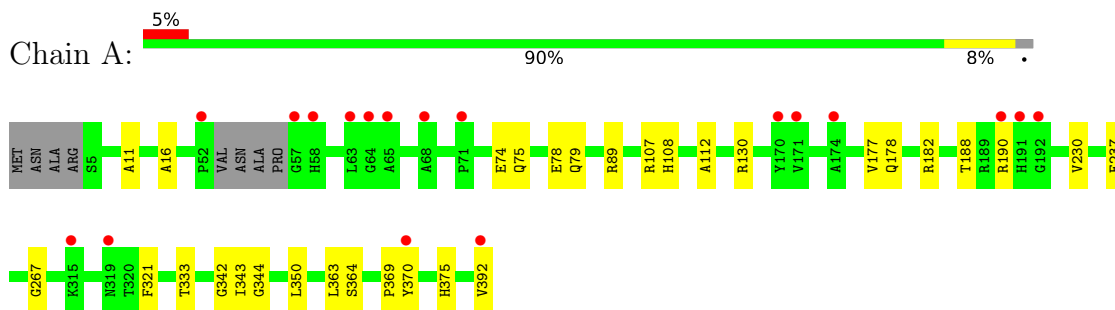
- Molecule 6 is water.

Mol	Chain	Residues	Atoms		ZeroOcc	AltConf
6	A	382	Total 382	O 382	0	0

3 Residue-property plots [i](#)

These plots are drawn for all protein, RNA, DNA and oligosaccharide chains in the entry. The first graphic for a chain summarises the proportions of the various outlier classes displayed in the second graphic. The second graphic shows the sequence view annotated by issues in geometry and electron density. Residues are color-coded according to the number of geometric quality criteria for which they contain at least one outlier: green = 0, yellow = 1, orange = 2 and red = 3 or more. A red dot above a residue indicates a poor fit to the electron density ($RSRZ > 2$). Stretches of 2 or more consecutive residues without any outlier are shown as a green connector. Residues present in the sample, but not in the model, are shown in grey.

- Molecule 1: 6-aminohexanoate-dimer hydrolase



4 Data and refinement statistics i

Property	Value	Source
Space group	P 32 2 1	Depositor
Cell constants a, b, c, α , β , γ	96.36Å 96.36Å 112.85Å 90.00° 90.00° 120.00°	Depositor
Resolution (Å)	29.65 – 1.65 29.65 – 1.60	Depositor EDS
% Data completeness (in resolution range)	99.6 (29.65-1.65) 98.7 (29.65-1.60)	Depositor EDS
R_{merge}	0.03	Depositor
R_{sym}	(Not available)	Depositor
$\langle I/\sigma(I) \rangle$ ¹	2.75 (at 1.60Å)	Xtrriage
Refinement program	CNS 1.2	Depositor
R, R_{free}	0.189 , 0.202 0.183 , 0.196	Depositor DCC
R_{free} test set	7374 reflections (9.20%)	wwPDB-VP
Wilson B-factor (Å ²)	18.4	Xtrriage
Anisotropy	0.095	Xtrriage
Bulk solvent k_{sol} (e/Å ³), B_{sol} (Å ²)	0.40 , 50.3	EDS
L-test for twinning ²	$\langle L \rangle = 0.49$, $\langle L^2 \rangle = 0.33$	Xtrriage
Estimated twinning fraction	0.008 for -h,-k,l	Xtrriage
F_o, F_c correlation	0.96	EDS
Total number of atoms	3407	wwPDB-VP
Average B, all atoms (Å ²)	21.0	wwPDB-VP

Xtrriage's analysis on translational NCS is as follows: *The largest off-origin peak in the Patterson function is 4.03% of the height of the origin peak. No significant pseudotranslation is detected.*

¹Intensities estimated from amplitudes.

²Theoretical values of $\langle |L| \rangle$, $\langle L^2 \rangle$ for acentric reflections are 0.5, 0.333 respectively for untwinned datasets, and 0.375, 0.2 for perfectly twinned datasets.

5 Model quality [i](#)

5.1 Standard geometry [i](#)

Bond lengths and bond angles in the following residue types are not validated in this section: ACA, GOL, SO4, MES

The Z score for a bond length (or angle) is the number of standard deviations the observed value is removed from the expected value. A bond length (or angle) with $|Z| > 5$ is considered an outlier worth inspection. RMSZ is the root-mean-square of all Z scores of the bond lengths (or angles).

Mol	Chain	Bond lengths		Bond angles	
		RMSZ	# Z >5	RMSZ	# Z >5
1	A	0.28	0/3031	0.60	2/4137 (0.0%)

There are no bond length outliers.

All (2) bond angle outliers are listed below:

Mol	Chain	Res	Type	Atoms	Z	Observed(°)	Ideal(°)
1	A	342	GLY	N-CA-C	-6.11	97.81	113.10
1	A	350	LEU	N-CA-C	-5.32	96.62	111.00

There are no chirality outliers.

There are no planarity outliers.

5.2 Too-close contacts [i](#)

In the following table, the Non-H and H(model) columns list the number of non-hydrogen atoms and hydrogen atoms in the chain respectively. The H(added) column lists the number of hydrogen atoms added and optimized by MolProbity. The Clashes column lists the number of clashes within the asymmetric unit, whereas Symm-Clashes lists symmetry-related clashes.

Mol	Chain	Non-H	H(model)	H(added)	Clashes	Symm-Clashes
1	A	2957	0	2810	21	0
2	A	9	0	6	1	0
3	A	30	0	40	4	0
4	A	24	0	26	0	0
5	A	5	0	0	0	0
6	A	382	0	0	4	0
All	All	3407	0	2882	21	0

The all-atom clashscore is defined as the number of clashes found per 1000 atoms (including

hydrogen atoms). The all-atom clashscore for this structure is 4.

All (21) close contacts within the same asymmetric unit are listed below, sorted by their clash magnitude.

Atom-1	Atom-2	Interatomic distance (Å)	Clash overlap (Å)
1:A:343:ILE:HG22	3:A:605:GOL:H32	1.63	0.79
1:A:112:ALA:HB2	2:A:601:ACA:C	2.29	0.62
1:A:75:GLN:O	1:A:79:GLN:HG3	2.02	0.60
1:A:107:ARG:H	3:A:604:GOL:H31	1.68	0.58
1:A:182:ARG:CZ	1:A:190:ARG:HD3	2.35	0.56
1:A:74:GLU:O	1:A:78:GLU:HG3	2.09	0.53
1:A:107:ARG:H	3:A:604:GOL:C3	2.22	0.52
1:A:237:GLU:HG3	6:A:988:HOH:O	2.09	0.52
1:A:343:ILE:CG2	3:A:605:GOL:H32	2.38	0.50
1:A:89:ARG:HD2	6:A:933:HOH:O	2.12	0.48
1:A:130:ARG:HD2	6:A:892:HOH:O	2.14	0.47
1:A:11:ALA:HB1	1:A:16:ALA:HB3	1.97	0.45
1:A:370:TYR:CD1	1:A:375:HIS:CD2	3.05	0.44
1:A:321:PHE:CD1	1:A:333:THR:HB	2.53	0.44
1:A:177:VAL:HG13	1:A:178:GLN:N	2.34	0.43
1:A:130:ARG:HB3	1:A:230:VAL:CG1	2.49	0.43
1:A:369:PRO:HG2	6:A:849:HOH:O	2.19	0.42
1:A:108:HIS:HB3	1:A:363:LEU:HD13	2.01	0.42
1:A:182:ARG:HD2	1:A:188:THR:O	2.20	0.41
1:A:392:VAL:OXT	1:A:392:VAL:HG22	2.20	0.41
1:A:112:ALA:HB3	1:A:344:GLY:HA2	2.02	0.40

There are no symmetry-related clashes.

5.3 Torsion angles [i](#)

5.3.1 Protein backbone [i](#)

In the following table, the Percentiles column shows the percent Ramachandran outliers of the chain as a percentile score with respect to all X-ray entries followed by that with respect to entries of similar resolution.

The Analysed column shows the number of residues for which the backbone conformation was analysed, and the total number of residues.

Mol	Chain	Analysed	Favoured	Allowed	Outliers	Percentiles
1	A	380/392 (97%)	369 (97%)	10 (3%)	1 (0%)	41 22

All (1) Ramachandran outliers are listed below:

Mol	Chain	Res	Type
1	A	267	GLY

5.3.2 Protein sidechains [i](#)

In the following table, the Percentiles column shows the percent sidechain outliers of the chain as a percentile score with respect to all X-ray entries followed by that with respect to entries of similar resolution.

The Analysed column shows the number of residues for which the sidechain conformation was analysed, and the total number of residues.

Mol	Chain	Analysed	Rotameric	Outliers	Percentiles
1	A	307/313 (98%)	306 (100%)	1 (0%)	92 88

All (1) residues with a non-rotameric sidechain are listed below:

Mol	Chain	Res	Type
1	A	364	SER

Sometimes sidechains can be flipped to improve hydrogen bonding and reduce clashes. All (1) such sidechains are listed below:

Mol	Chain	Res	Type
1	A	8	GLN

5.3.3 RNA [i](#)

There are no RNA molecules in this entry.

5.4 Non-standard residues in protein, DNA, RNA chains [i](#)

There are no non-standard protein/DNA/RNA residues in this entry.

5.5 Carbohydrates [i](#)

There are no monosaccharides in this entry.

5.6 Ligand geometry i

9 ligands are modelled in this entry.

In the following table, the Counts columns list the number of bonds (or angles) for which Mogul statistics could be retrieved, the number of bonds (or angles) that are observed in the model and the number of bonds (or angles) that are defined in the Chemical Component Dictionary. The Link column lists molecule types, if any, to which the group is linked. The Z score for a bond length (or angle) is the number of standard deviations the observed value is removed from the expected value. A bond length (or angle) with $|Z| > 2$ is considered an outlier worth inspection. RMSZ is the root-mean-square of all Z scores of the bond lengths (or angles).

Mol	Type	Chain	Res	Link	Bond lengths			Bond angles		
					Counts	RMSZ	# Z > 2	Counts	RMSZ	# Z > 2
3	GOL	A	606	-	5,5,5	0.27	0	5,5,5	0.25	0
3	GOL	A	603	-	5,5,5	0.28	0	5,5,5	0.25	0
4	MES	A	607	-	12,12,12	3.19	6 (50%)	14,16,16	1.81	3 (21%)
3	GOL	A	604	-	5,5,5	0.28	0	5,5,5	0.26	0
5	SO4	A	609	-	4,4,4	0.27	0	6,6,6	0.05	0
3	GOL	A	605	-	5,5,5	0.25	0	5,5,5	0.24	0
4	MES	A	608	-	12,12,12	3.22	6 (50%)	14,16,16	1.84	4 (28%)
2	ACA	A	601	-	8,8,8	0.70	0	8,8,8	0.79	0
3	GOL	A	602	-	5,5,5	0.31	0	5,5,5	0.30	0

In the following table, the Chirals column lists the number of chiral outliers, the number of chiral centers analysed, the number of these observed in the model and the number defined in the Chemical Component Dictionary. Similar counts are reported in the Torsion and Rings columns. '2' means no outliers of that kind were identified.

Mol	Type	Chain	Res	Link	Chirals	Torsions	Rings
3	GOL	A	606	-	-	0/4/4/4	-
3	GOL	A	603	-	-	0/4/4/4	-
4	MES	A	607	-	-	2/6/14/14	0/1/1/1
3	GOL	A	604	-	-	2/4/4/4	-
3	GOL	A	605	-	-	2/4/4/4	-
4	MES	A	608	-	-	1/6/14/14	0/1/1/1
2	ACA	A	601	-	-	4/6/6/6	-
3	GOL	A	602	-	-	2/4/4/4	-

All (12) bond length outliers are listed below:

Mol	Chain	Res	Type	Atoms	Z	Observed(Å)	Ideal(Å)
4	A	608	MES	O3S-S	5.89	1.68	1.47
4	A	607	MES	O3S-S	5.82	1.68	1.47

Continued on next page...

Continued from previous page...

Mol	Chain	Res	Type	Atoms	Z	Observed(Å)	Ideal(Å)
4	A	607	MES	O2S-S	4.88	1.59	1.45
4	A	608	MES	O2S-S	4.85	1.59	1.45
4	A	607	MES	O1S-S	4.76	1.59	1.45
4	A	608	MES	O1S-S	4.65	1.58	1.45
4	A	608	MES	C7-N4	3.69	1.55	1.47
4	A	607	MES	C5-N4	3.49	1.56	1.46
4	A	608	MES	C3-N4	3.46	1.56	1.46
4	A	607	MES	C3-N4	3.45	1.56	1.46
4	A	608	MES	C5-N4	3.32	1.56	1.46
4	A	607	MES	C7-N4	3.23	1.54	1.47

All (7) bond angle outliers are listed below:

Mol	Chain	Res	Type	Atoms	Z	Observed(°)	Ideal(°)
4	A	608	MES	O3S-S-C8	3.47	111.38	105.77
4	A	607	MES	O1S-S-C8	3.38	110.98	106.92
4	A	607	MES	O3S-S-C8	3.35	111.18	105.77
4	A	608	MES	O1S-S-C8	3.15	110.71	106.92
4	A	608	MES	O2S-S-C8	2.88	110.38	106.92
4	A	607	MES	O2S-S-C8	2.77	110.25	106.92
4	A	608	MES	C6-O1-C2	2.06	116.75	109.89

There are no chirality outliers.

All (13) torsion outliers are listed below:

Mol	Chain	Res	Type	Atoms
3	A	602	GOL	C1-C2-C3-O3
3	A	604	GOL	C1-C2-C3-O3
3	A	605	GOL	C1-C2-C3-O3
3	A	604	GOL	O2-C2-C3-O3
3	A	602	GOL	O2-C2-C3-O3
2	A	601	ACA	C2-C3-C4-C5
3	A	605	GOL	O2-C2-C3-O3
2	A	601	ACA	C4-C5-C6-N
4	A	607	MES	C8-C7-N4-C3
4	A	607	MES	C8-C7-N4-C5
2	A	601	ACA	OXT-C-C2-C3
2	A	601	ACA	O-C-C2-C3
4	A	608	MES	C8-C7-N4-C5

There are no ring outliers.

3 monomers are involved in 5 short contacts:

Mol	Chain	Res	Type	Clashes	Symm-Clashes
3	A	604	GOL	2	0
3	A	605	GOL	2	0
2	A	601	ACA	1	0

5.7 Other polymers [i](#)

There are no such residues in this entry.

5.8 Polymer linkage issues [i](#)

There are no chain breaks in this entry.

6 Fit of model and data [i](#)

6.1 Protein, DNA and RNA chains [i](#)

In the following table, the column labelled ‘#RSRZ> 2’ contains the number (and percentage) of RSRZ outliers, followed by percent RSRZ outliers for the chain as percentile scores relative to all X-ray entries and entries of similar resolution. The OWAB column contains the minimum, median, 95th percentile and maximum values of the occupancy-weighted average B-factor per residue. The column labelled ‘Q< 0.9’ lists the number of (and percentage) of residues with an average occupancy less than 0.9.

Mol	Chain	Analysed	<RSRZ>	#RSRZ>2	OWAB(Å ²)	Q<0.9
1	A	384/392 (97%)	0.02	18 (4%) 31 30	10, 17, 39, 57	0

All (18) RSRZ outliers are listed below:

Mol	Chain	Res	Type	RSRZ
1	A	58	HIS	6.5
1	A	392	VAL	4.7
1	A	191	HIS	4.6
1	A	171	VAL	4.2
1	A	170	TYR	3.9
1	A	71	PRO	3.9
1	A	65	ALA	3.7
1	A	63	LEU	2.9
1	A	192	GLY	2.8
1	A	315	LYS	2.6
1	A	174	ALA	2.5
1	A	370	TYR	2.5
1	A	57	GLY	2.5
1	A	52	PRO	2.4
1	A	64	GLY	2.3
1	A	190	ARG	2.3
1	A	68	ALA	2.2
1	A	319	ASN	2.0

6.2 Non-standard residues in protein, DNA, RNA chains [i](#)

There are no non-standard protein/DNA/RNA residues in this entry.

6.3 Carbohydrates [i](#)

There are no monosaccharides in this entry.

6.4 Ligands [i](#)

In the following table, the Atoms column lists the number of modelled atoms in the group and the number defined in the chemical component dictionary. The B-factors column lists the minimum, median, 95th percentile and maximum values of B factors of atoms in the group. The column labelled 'Q< 0.9' lists the number of atoms with occupancy less than 0.9.

Mol	Type	Chain	Res	Atoms	RSCC	RSR	B-factors(Å ²)	Q<0.9
3	GOL	A	606	6/6	0.65	0.21	41,43,47,48	0
3	GOL	A	604	6/6	0.68	0.17	36,44,45,53	0
3	GOL	A	605	6/6	0.85	0.15	34,48,52,54	0
3	GOL	A	602	6/6	0.86	0.16	25,31,39,39	0
3	GOL	A	603	6/6	0.90	0.11	28,34,37,39	0
4	MES	A	607	12/12	0.90	0.15	29,34,39,50	0
5	SO4	A	609	5/5	0.90	0.31	62,69,71,75	0
4	MES	A	608	12/12	0.91	0.23	40,54,60,61	0
2	ACA	A	601	9/9	0.93	0.12	12,28,39,46	0

6.5 Other polymers [i](#)

There are no such residues in this entry.