



Full wwPDB X-ray Structure Validation Report ⓘ

Feb 17, 2024 – 12:06 PM EST

PDB ID : 3SFX
Title : Cryptococcus neoformans protein farnesyltransferase in complex with FPT-II and tipifarnib
Authors : Hast, M.A.; Beese, L.S.
Deposited on : 2011-06-14
Resolution : 2.00 Å(reported)

This is a Full wwPDB X-ray Structure Validation Report for a publicly released PDB entry.

We welcome your comments at validation@mail.wwpdb.org

A user guide is available at

<https://www.wwpdb.org/validation/2017/XrayValidationReportHelp>

with specific help available everywhere you see the ⓘ symbol.

The types of validation reports are described at

<http://www.wwpdb.org/validation/2017/FAQs#types>.

The following versions of software and data (see [references ⓘ](#)) were used in the production of this report:

MolProbity : 4.02b-467
Mogul : 1.8.5 (274361), CSD as541be (2020)
Xtriage (Phenix) : 1.13
EDS : 2.36
buster-report : 1.1.7 (2018)
Percentile statistics : 20191225.v01 (using entries in the PDB archive December 25th 2019)
Refmac : 5.8.0158
CCP4 : 7.0.044 (Gargrove)
Ideal geometry (proteins) : Engh & Huber (2001)
Ideal geometry (DNA, RNA) : Parkinson et al. (1996)
Validation Pipeline (wwPDB-VP) : 2.36

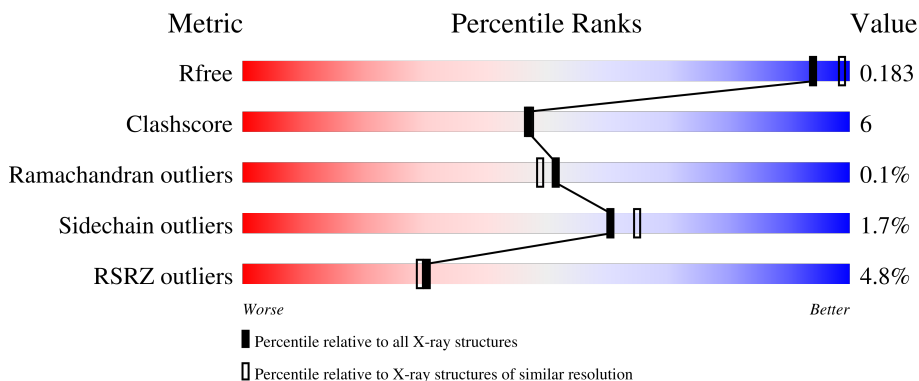
1 Overall quality at a glance

The following experimental techniques were used to determine the structure:

X-RAY DIFFRACTION

The reported resolution of this entry is 2.00 Å.

Percentile scores (ranging between 0-100) for global validation metrics of the entry are shown in the following graphic. The table shows the number of entries on which the scores are based.



Metric	Whole archive (#Entries)	Similar resolution (#Entries, resolution range(Å))
R_{free}	130704	8085 (2.00-2.00)
Clashscore	141614	9178 (2.00-2.00)
Ramachandran outliers	138981	9054 (2.00-2.00)
Sidechain outliers	138945	9053 (2.00-2.00)
RSRZ outliers	127900	7900 (2.00-2.00)

The table below summarises the geometric issues observed across the polymeric chains and their fit to the electron density. The red, orange, yellow and green segments of the lower bar indicate the fraction of residues that contain outliers for ≥ 3 , 2, 1 and 0 types of geometric quality criteria respectively. A grey segment represents the fraction of residues that are not modelled. The numeric value for each fraction is indicated below the corresponding segment, with a dot representing fractions $\leq 5\%$. The upper red bar (where present) indicates the fraction of residues that have poor fit to the electron density. The numeric value is given above the bar.

Mol	Chain	Length	Quality of chain
1	A	349	 5% 85% 6% 10%
2	B	520	 4% 82% 10% 7%

The following table lists non-polymeric compounds, carbohydrate monomers and non-standard residues in protein, DNA, RNA chains that are outliers for geometric or electron-density-fit criteria:

Mol	Type	Chain	Res	Chirality	Geometry	Clashes	Electron density
5	FII	B	525	-	-	X	X

2 Entry composition

There are 8 unique types of molecules in this entry. The entry contains 7129 atoms, of which 0 are hydrogens and 0 are deuteriums.

In the tables below, the ZeroOcc column contains the number of atoms modelled with zero occupancy, the AltConf column contains the number of residues with at least one atom in alternate conformation and the Trace column contains the number of residues modelled with at most 2 atoms.

- Molecule 1 is a protein called Cryptococcus neoformans protein farnesyltransferase alpha subunit.

Mol	Chain	Residues	Atoms					ZeroOcc	AltConf	Trace
			Total	C	N	O	S			
1	A	315	2621	1691	446	473	11	0	0	0

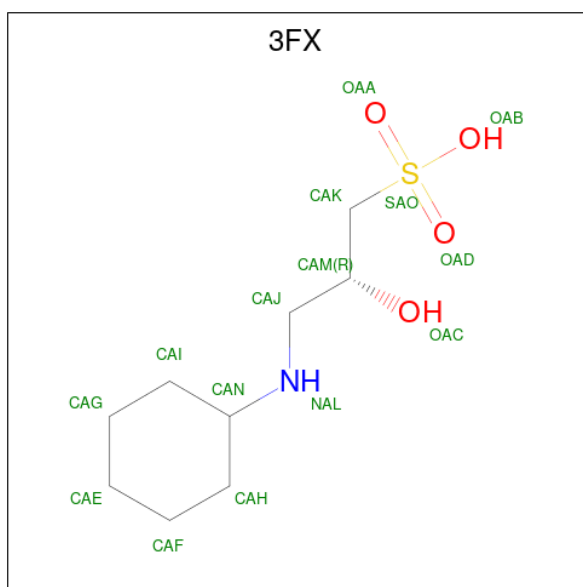
- Molecule 2 is a protein called Cryptococcus neoformans protein farnesyltransferase beta subunit.

Mol	Chain	Residues	Atoms					ZeroOcc	AltConf	Trace
			Total	C	N	O	S			
2	B	485	3730	2366	649	700	15	0	1	0

- Molecule 3 is ZINC ION (three-letter code: ZN) (formula: Zn).

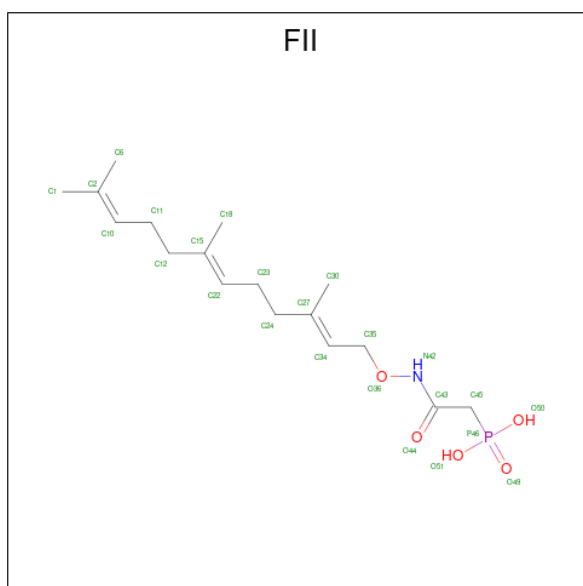
Mol	Chain	Residues	Atoms		ZeroOcc	AltConf
3	B	1	Total	Zn	0	0
			1	1		

- Molecule 4 is (2R)-3-(cyclohexylamino)-2-hydroxypropane-1-sulfonic acid (three-letter code: 3FX) (formula: C₉H₁₉NO₄S).



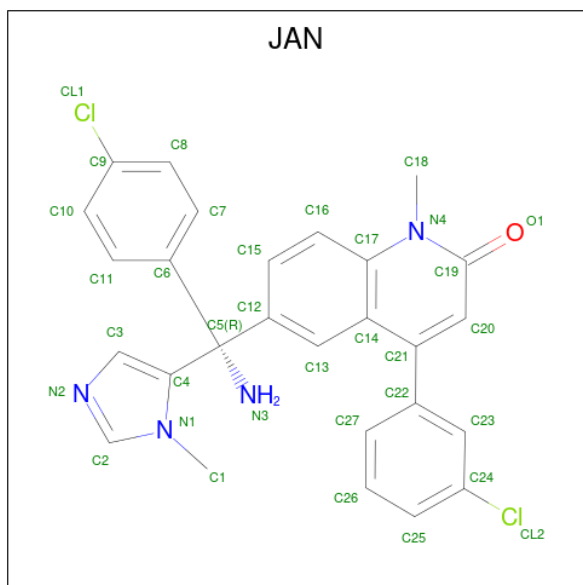
Mol	Chain	Residues	Atoms					ZeroOcc	AltConf	
			Total	C	N	O	S			
4	B	1	Total	15	9	1	4	1	0	0
4	B	1	Total	15	9	1	4	1	0	0
4	B	1	Total	15	9	1	4	1	0	0

- Molecule 5 is [(3,7,11-TRIMETHYL-DODECA-2,6,10-TRIENYLOXYCARBAMOYL)-METHYL]-PHOSPHONIC ACID (three-letter code: FII) (formula: C₁₇H₃₀NO₅P).



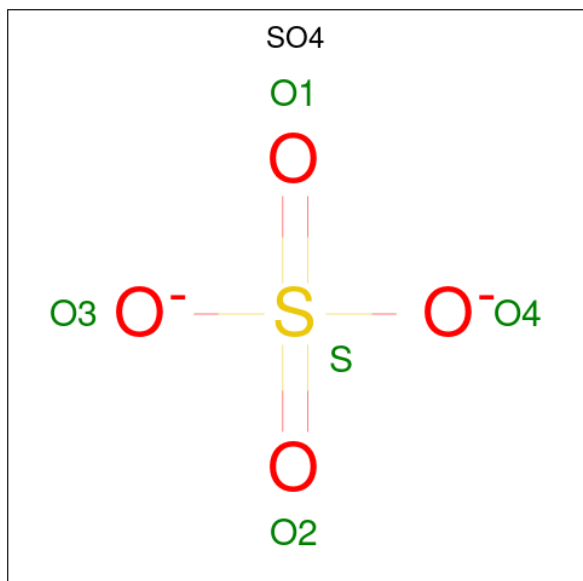
Mol	Chain	Residues	Atoms					ZeroOcc	AltConf
			Total	C	N	O	P		
5	B	1	24	17	1	5	1	0	0

- Molecule 6 is 6-[(S)-AMINO(4-CHLOROPHENYL)(1-METHYL-1H-IMIDAZOL-5-YL)METHYL]-4-(3-CHLOROPHENYL)-1-METHYLQUINOLIN-2(1H)-ONE (three-letter code: JAN) (formula: $C_{27}H_{22}Cl_2N_4O$).



Mol	Chain	Residues	Atoms					ZeroOcc	AltConf
			Total	C	Cl	N	O		
6	B	1	34	27	2	4	1	0	0

- Molecule 7 is SULFATE ION (three-letter code: SO4) (formula: O_4S).



Mol	Chain	Residues	Atoms			ZeroOcc	AltConf
7	B	1	Total	O	S	0	0
			5	4	1		

- Molecule 8 is water.

Mol	Chain	Residues	Atoms		ZeroOcc	AltConf
8	A	251	Total	O	0	0
			251	251		
8	B	418	Total	O	0	0
			418	418		

4 Data and refinement statistics

Property	Value	Source
Space group	P 43 21 2	Depositor
Cell constants a, b, c, α , β , γ	142.18Å 142.18Å 130.10Å 90.00° 90.00° 90.00°	Depositor
Resolution (Å)	45.47 – 2.00 46.89 – 2.05	Depositor EDS
% Data completeness (in resolution range)	99.9 (45.47-2.00) 99.8 (46.89-2.05)	Depositor EDS
R_{merge}	(Not available)	Depositor
R_{sym}	(Not available)	Depositor
$\langle I/\sigma(I) \rangle$ ¹	4.24 (at 2.05Å)	Xtrriage
Refinement program	REFMAC 5.5.0109	Depositor
R, R_{free}	0.180 , 0.199 0.188 , 0.183	Depositor DCC
R_{free} test set	4191 reflections (5.00%)	wwPDB-VP
Wilson B-factor (Å ²)	26.6	Xtrriage
Anisotropy	0.565	Xtrriage
Bulk solvent k_{sol} (e/Å ³), B_{sol} (Å ²)	0.34 , 38.6	EDS
L-test for twinning ²	$\langle L \rangle = 0.48$, $\langle L^2 \rangle = 0.31$	Xtrriage
Estimated twinning fraction	No twinning to report.	Xtrriage
F_o, F_c correlation	0.95	EDS
Total number of atoms	7129	wwPDB-VP
Average B, all atoms (Å ²)	34.0	wwPDB-VP

Xtrriage's analysis on translational NCS is as follows: *The largest off-origin peak in the Patterson function is 2.99% of the height of the origin peak. No significant pseudotranslation is detected.*

¹Intensities estimated from amplitudes.

²Theoretical values of $\langle |L| \rangle$, $\langle L^2 \rangle$ for acentric reflections are 0.5, 0.333 respectively for untwinned datasets, and 0.375, 0.2 for perfectly twinned datasets.

5 Model quality i

5.1 Standard geometry i

Bond lengths and bond angles in the following residue types are not validated in this section: 3FX, ZN, FII, SO4, JAN

The Z score for a bond length (or angle) is the number of standard deviations the observed value is removed from the expected value. A bond length (or angle) with $|Z| > 5$ is considered an outlier worth inspection. RMSZ is the root-mean-square of all Z scores of the bond lengths (or angles).

Mol	Chain	Bond lengths		Bond angles	
		RMSZ	# Z >5	RMSZ	# Z >5
1	A	0.51	0/2703	0.55	0/3680
2	B	0.58	0/3827	0.64	2/5198 (0.0%)
All	All	0.55	0/6530	0.61	2/8878 (0.0%)

There are no bond length outliers.

All (2) bond angle outliers are listed below:

Mol	Chain	Res	Type	Atoms	Z	Observed(°)	Ideal(°)
2	B	315	ARG	NE-CZ-NH2	-12.01	114.30	120.30
2	B	315	ARG	NE-CZ-NH1	9.59	125.10	120.30

There are no chirality outliers.

There are no planarity outliers.

5.2 Too-close contacts i

In the following table, the Non-H and H(model) columns list the number of non-hydrogen atoms and hydrogen atoms in the chain respectively. The H(added) column lists the number of hydrogen atoms added and optimized by MolProbity. The Clashes column lists the number of clashes within the asymmetric unit, whereas Symm-Clashes lists symmetry-related clashes.

Mol	Chain	Non-H	H(model)	H(added)	Clashes	Symm-Clashes
1	A	2621	0	2544	16	0
2	B	3730	0	3657	59	0
3	B	1	0	0	0	0
4	B	45	0	57	4	0
5	B	24	0	28	11	0
6	B	34	0	22	5	0
7	B	5	0	0	0	0

Continued on next page...

Continued from previous page...

Mol	Chain	Non-H	H(model)	H(added)	Clashes	Symm-Clashes
8	A	251	0	0	7	1
8	B	418	0	0	10	0
All	All	7129	0	6308	79	1

The all-atom clashscore is defined as the number of clashes found per 1000 atoms (including hydrogen atoms). The all-atom clashscore for this structure is 6.

All (79) close contacts within the same asymmetric unit are listed below, sorted by their clash magnitude.

Atom-1	Atom-2	Interatomic distance (Å)	Clash overlap (Å)
2:B:317:ARG:NH2	5:B:525:FII:H452	1.65	1.10
2:B:317:ARG:HH21	5:B:525:FII:H452	0.88	1.04
2:B:255:GLU:HA	8:B:2770:HOH:O	1.57	1.03
2:B:317:ARG:HH21	5:B:525:FII:C45	1.80	0.94
2:B:464:GLN:HE22	2:B:467:ARG:HH11	1.18	0.92
2:B:62:ARG:H	2:B:389:GLN:HE22	1.20	0.89
2:B:228:GLN:HE22	2:B:293:ASP:H	1.20	0.89
1:A:132:GLU:HG3	8:A:2761:HOH:O	1.71	0.88
2:B:440:ASP:H	2:B:518:GLN:HE22	1.23	0.88
1:A:143:LYS:HD3	2:B:320:LYS:HD3	1.59	0.85
1:A:28:ASN:HB3	8:A:2137:HOH:O	1.74	0.85
2:B:75:PHE:HB2	8:B:2004:HOH:O	1.76	0.85
2:B:170:GLN:HE22	2:B:449:LYS:H	1.26	0.81
2:B:66:HIS:HD1	2:B:397:GLY:H	1.28	0.80
2:B:305:GLN:HE22	2:B:376:ASN:H	1.32	0.75
2:B:496:THR:HG23	8:B:2053:HOH:O	1.85	0.75
1:A:226:HIS:H	2:B:20:ASN:HD21	1.35	0.71
1:A:156:SER:O	1:A:160:THR:HG23	1.93	0.68
2:B:381:GLN:HE22	2:B:487:VAL:H	1.45	0.64
2:B:266:HIS:HE1	5:B:525:FII:O49	1.82	0.63
2:B:266:HIS:CD2	2:B:268:GLY:H	2.17	0.63
2:B:266:HIS:HD2	2:B:268:GLY:H	1.48	0.62
2:B:170:GLN:NE2	2:B:449:LYS:H	1.98	0.62
2:B:73:SER:CB	2:B:408:GLN:HE21	2.12	0.61
2:B:62:ARG:H	2:B:389:GLN:NE2	1.95	0.61
2:B:317:ARG:HG3	2:B:320:LYS:HG3	1.86	0.58
1:A:148:TRP:O	1:A:152:HIS:HD2	1.87	0.57
2:B:180:LYS:HG3	8:B:2584:HOH:O	2.04	0.57
2:B:381:GLN:NE2	2:B:487:VAL:H	2.02	0.57
2:B:73:SER:HB3	2:B:408:GLN:HE21	1.69	0.56
6:B:526:JAN:H3	6:B:526:JAN:C15	2.34	0.56

Continued on next page...

Continued from previous page...

Atom-1	Atom-2	Interatomic distance (Å)	Clash overlap (Å)
5:B:525:FII:H101	6:B:526:JAN:CL1	2.43	0.56
1:A:226:HIS:H	2:B:20:ASN:ND2	2.03	0.56
1:A:143:LYS:CD	2:B:320:LYS:HD3	2.34	0.55
4:B:522:3FX:HAJA	8:B:1900:HOH:O	2.06	0.54
1:A:23:GLN:NE2	8:A:1983:HOH:O	2.41	0.54
6:B:526:JAN:C15	6:B:526:JAN:C3	2.85	0.53
2:B:266:HIS:CE1	5:B:525:FII:O49	2.61	0.51
2:B:371:ILE:HG13	2:B:372:PRO:HD2	1.92	0.51
6:B:526:JAN:H182	8:B:2869:HOH:O	2.11	0.51
2:B:305:GLN:HE22	2:B:376:ASN:N	2.07	0.50
2:B:440:ASP:H	2:B:518:GLN:NE2	2.00	0.50
2:B:86:ALA:HA	2:B:136:GLN:HE22	1.77	0.49
1:A:152:HIS:HE1	8:A:1787:HOH:O	1.94	0.49
1:A:146:HIS:ND1	8:A:2774:HOH:O	2.35	0.49
2:B:464:GLN:HE22	2:B:467:ARG:NH1	1.99	0.49
2:B:320:LYS:NZ	5:B:525:FII:H451	2.29	0.48
2:B:64:GLN:HB2	4:B:523:3FX:HAK	1.95	0.47
2:B:305:GLN:NE2	2:B:376:ASN:H	2.07	0.47
2:B:310:GLU:OE1	2:B:315:ARG:NH2	2.39	0.47
2:B:255:GLU:HB3	8:B:2569:HOH:O	2.13	0.47
1:A:28:ASN:CB	8:A:2137:HOH:O	2.46	0.47
2:B:464:GLN:NE2	2:B:467:ARG:HH11	1.99	0.47
2:B:170:GLN:HE22	2:B:449:LYS:N	2.03	0.47
2:B:255:GLU:N	2:B:256:PRO:CD	2.78	0.47
2:B:57:ARG:NH1	8:B:1608:HOH:O	2.38	0.46
5:B:525:FII:C34	6:B:526:JAN:H11A	2.45	0.46
1:A:134:ILE:HD11	1:A:150:TYR:HE2	1.80	0.45
2:B:66:HIS:HD1	2:B:397:GLY:N	2.05	0.45
2:B:239:PHE:HB2	2:B:262[B]:MET:SD	2.57	0.45
2:B:255:GLU:N	2:B:256:PRO:HD3	2.33	0.43
5:B:525:FII:H301	5:B:525:FII:H352	1.81	0.43
2:B:133:ALA:O	4:B:524:3FX:HAJ	2.19	0.43
5:B:525:FII:H221	5:B:525:FII:H111	1.77	0.43
1:A:23:GLN:HG3	2:B:132:PRO:HG2	2.01	0.43
1:A:134:ILE:HD11	1:A:150:TYR:CE2	2.53	0.42
2:B:73:SER:HB3	2:B:408:GLN:NE2	2.35	0.42
2:B:324:GLY:HA3	2:B:414:ASN:HD21	1.85	0.42
2:B:464:GLN:NE2	2:B:464:GLN:HA	2.35	0.42
1:A:317:GLU:HG2	8:A:2764:HOH:O	2.20	0.41
2:B:62:ARG:N	2:B:389:GLN:HE22	2.02	0.41
2:B:242:PRO:C	8:B:2634:HOH:O	2.58	0.41

Continued on next page...

Continued from previous page...

Atom-1	Atom-2	Interatomic distance (Å)	Clash overlap (Å)
2:B:491:ASP:OD2	4:B:522:3FX:NAL	2.53	0.41
2:B:22:ARG:NE	8:B:2755:HOH:O	2.53	0.41
5:B:525:FII:H181	5:B:525:FII:H232	1.85	0.41
2:B:271:SER:HB2	2:B:329:TRP:O	2.21	0.41
2:B:139:HIS:CE1	2:B:188:VAL:HB	2.55	0.40
2:B:180:LYS:HE2	2:B:215:GLU:O	2.20	0.40
2:B:217:LEU:HD12	2:B:283:VAL:HG11	2.03	0.40

All (1) symmetry-related close contacts are listed below. The label for Atom-2 includes the symmetry operator and encoded unit-cell translations to be applied.

Atom-1	Atom-2	Interatomic distance (Å)	Clash overlap (Å)
8:A:1889:HOH:O	8:A:2912:HOH:O[8_555]	2.18	0.02

5.3 Torsion angles [i](#)

5.3.1 Protein backbone [i](#)

In the following table, the Percentiles column shows the percent Ramachandran outliers of the chain as a percentile score with respect to all X-ray entries followed by that with respect to entries of similar resolution.

The Analysed column shows the number of residues for which the backbone conformation was analysed, and the total number of residues.

Mol	Chain	Analysed	Favoured	Allowed	Outliers	Percentiles	
1	A	309/349 (88%)	303 (98%)	6 (2%)	0	100	100
2	B	480/520 (92%)	470 (98%)	9 (2%)	1 (0%)	47	44
All	All	789/869 (91%)	773 (98%)	15 (2%)	1 (0%)	51	49

All (1) Ramachandran outliers are listed below:

Mol	Chain	Res	Type
2	B	51	VAL

5.3.2 Protein sidechains [i](#)

In the following table, the Percentiles column shows the percent sidechain outliers of the chain as a percentile score with respect to all X-ray entries followed by that with respect to entries of similar

resolution.

The Analysed column shows the number of residues for which the sidechain conformation was analysed, and the total number of residues.

Mol	Chain	Analysed	Rotameric	Outliers	Percentiles	
1	A	285/316 (90%)	278 (98%)	7 (2%)	47	49
2	B	404/436 (93%)	399 (99%)	5 (1%)	71	76
All	All	689/752 (92%)	677 (98%)	12 (2%)	60	65

All (12) residues with a non-rotameric sidechain are listed below:

Mol	Chain	Res	Type
1	A	5	THR
1	A	204	GLU
1	A	209	SER
1	A	214	LEU
1	A	279	LEU
1	A	330	ARG
1	A	332	GLU
2	B	22	ARG
2	B	74	PHE
2	B	258	CYS
2	B	320	LYS
2	B	509	LYS

Sometimes sidechains can be flipped to improve hydrogen bonding and reduce clashes. All (22) such sidechains are listed below:

Mol	Chain	Res	Type
1	A	73	HIS
1	A	105	ASN
1	A	110	GLN
1	A	146	HIS
1	A	152	HIS
1	A	187	ASN
2	B	20	ASN
2	B	108	GLN
2	B	136	GLN
2	B	170	GLN
2	B	219	ASN
2	B	228	GLN
2	B	266	HIS
2	B	304	GLN

Continued on next page...

Continued from previous page...

Mol	Chain	Res	Type
2	B	305	GLN
2	B	319	ASN
2	B	381	GLN
2	B	389	GLN
2	B	414	ASN
2	B	464	GLN
2	B	495	ASN
2	B	518	GLN

5.3.3 RNA [i](#)

There are no RNA molecules in this entry.

5.4 Non-standard residues in protein, DNA, RNA chains [i](#)

There are no non-standard protein/DNA/RNA residues in this entry.

5.5 Carbohydrates [i](#)

There are no monosaccharides in this entry.

5.6 Ligand geometry [i](#)

Of 7 ligands modelled in this entry, 1 is monoatomic - leaving 6 for Mogul analysis.

In the following table, the Counts columns list the number of bonds (or angles) for which Mogul statistics could be retrieved, the number of bonds (or angles) that are observed in the model and the number of bonds (or angles) that are defined in the Chemical Component Dictionary. The Link column lists molecule types, if any, to which the group is linked. The Z score for a bond length (or angle) is the number of standard deviations the observed value is removed from the expected value. A bond length (or angle) with $|Z| > 2$ is considered an outlier worth inspection. RMSZ is the root-mean-square of all Z scores of the bond lengths (or angles).

Mol	Type	Chain	Res	Link	Bond lengths			Bond angles		
					Counts	RMSZ	# Z > 2	Counts	RMSZ	# Z > 2
6	JAN	B	526	3	33,38,38	1.66	2 (6%)	47,57,57	1.74	8 (17%)
5	FII	B	525	-	23,23,23	2.27	9 (39%)	27,29,29	1.46	6 (22%)
7	SO4	B	527	-	4,4,4	0.19	0	6,6,6	0.23	0
4	3FX	B	522	-	15,15,15	1.03	1 (6%)	16,20,20	1.38	1 (6%)
4	3FX	B	523	-	15,15,15	0.87	0	16,20,20	1.08	1 (6%)

Mol	Type	Chain	Res	Link	Bond lengths			Bond angles		
					Counts	RMSZ	# Z > 2	Counts	RMSZ	# Z > 2
4	3FX	B	524	-	15,15,15	1.12	0	16,20,20	1.33	2 (12%)

In the following table, the Chirals column lists the number of chiral outliers, the number of chiral centers analysed, the number of these observed in the model and the number defined in the Chemical Component Dictionary. Similar counts are reported in the Torsion and Rings columns. '-' means no outliers of that kind were identified.

Mol	Type	Chain	Res	Link	Chirals	Torsions	Rings
6	JAN	B	526	3	-	0/12/22/22	0/5/5/5
5	FII	B	525	-	-	10/23/24/24	-
4	3FX	B	522	-	-	3/10/18/18	0/1/1/1
4	3FX	B	523	-	-	7/10/18/18	0/1/1/1
4	3FX	B	524	-	-	8/10/18/18	0/1/1/1

All (12) bond length outliers are listed below:

Mol	Chain	Res	Type	Atoms	Z	Observed(Å)	Ideal(Å)
5	B	525	FII	P46-O49	5.80	1.62	1.50
6	B	526	JAN	C5-C6	5.79	1.56	1.54
6	B	526	JAN	C5-C12	4.12	1.56	1.54
5	B	525	FII	C11-C10	-3.36	1.39	1.50
5	B	525	FII	C23-C22	-3.34	1.39	1.50
5	B	525	FII	C35-C34	-3.25	1.39	1.49
5	B	525	FII	P46-O50	3.23	1.62	1.54
5	B	525	FII	P46-O51	-2.82	1.48	1.54
5	B	525	FII	C34-C27	2.70	1.39	1.33
5	B	525	FII	C22-C15	2.69	1.39	1.33
5	B	525	FII	C10-C2	2.45	1.39	1.32
4	B	522	3FX	CAH-CAN	2.22	1.57	1.52

All (18) bond angle outliers are listed below:

Mol	Chain	Res	Type	Atoms	Z	Observed(°)	Ideal(°)
6	B	526	JAN	C6-C5-N3	7.08	117.69	108.36
4	B	522	3FX	OAB-SAO-CAK	4.83	113.43	105.74
6	B	526	JAN	C16-C17-N4	-3.56	118.85	121.71
4	B	523	3FX	OAB-SAO-CAK	3.45	111.24	105.74
6	B	526	JAN	C4-C5-C12	-3.26	104.61	110.53
5	B	525	FII	O51-P46-C45	3.09	113.32	106.84
6	B	526	JAN	C12-C5-C6	-3.02	106.44	110.56
6	B	526	JAN	N2-C2-N1	-3.02	107.77	112.26

Continued on next page...

Continued from previous page...

Mol	Chain	Res	Type	Atoms	Z	Observed(°)	Ideal(°)
4	B	524	3FX	OAB-SAO-CAK	2.98	110.49	105.74
5	B	525	FII	C18-C15-C12	2.82	120.01	115.27
5	B	525	FII	C30-C27-C24	2.82	120.01	115.27
4	B	524	3FX	OAA-SAO-CAK	2.69	110.13	106.94
5	B	525	FII	O50-P46-O49	-2.66	105.36	112.39
6	B	526	JAN	C18-N4-C17	2.57	121.41	118.06
5	B	525	FII	O49-P46-C45	-2.46	105.34	110.94
6	B	526	JAN	C1-N1-C4	2.42	127.34	124.35
5	B	525	FII	C6-C2-C1	2.42	119.95	114.60
6	B	526	JAN	C17-N4-C19	-2.35	119.71	121.79

There are no chirality outliers.

All (28) torsion outliers are listed below:

Mol	Chain	Res	Type	Atoms
4	B	523	3FX	NAL-CAJ-CAM-OAC
4	B	523	3FX	NAL-CAJ-CAM-CAK
4	B	523	3FX	CAM-CAK-SAO-OAA
4	B	523	3FX	CAM-CAK-SAO-OAB
4	B	523	3FX	CAM-CAK-SAO-OAD
4	B	524	3FX	CAM-CAK-SAO-OAA
4	B	524	3FX	CAM-CAK-SAO-OAB
4	B	524	3FX	CAM-CAK-SAO-OAD
4	B	524	3FX	CAI-CAN-NAL-CAJ
5	B	525	FII	C23-C24-C27-C30
5	B	525	FII	C23-C24-C27-C34
5	B	525	FII	C43-C45-P46-O49
5	B	525	FII	C43-C45-P46-O50
5	B	525	FII	C10-C11-C12-C15
5	B	525	FII	C43-C45-P46-O51
5	B	525	FII	C11-C12-C15-C18
5	B	525	FII	C11-C12-C15-C22
5	B	525	FII	C34-C35-O36-N42
4	B	523	3FX	CAI-CAN-NAL-CAJ
4	B	524	3FX	CAM-CAJ-NAL-CAN
4	B	522	3FX	SAO-CAK-CAM-OAC
4	B	524	3FX	NAL-CAJ-CAM-OAC
4	B	523	3FX	CAH-CAN-NAL-CAJ
4	B	524	3FX	CAH-CAN-NAL-CAJ
4	B	522	3FX	SAO-CAK-CAM-CAJ
4	B	524	3FX	SAO-CAK-CAM-OAC
4	B	522	3FX	NAL-CAJ-CAM-OAC

Continued on next page...

Continued from previous page...

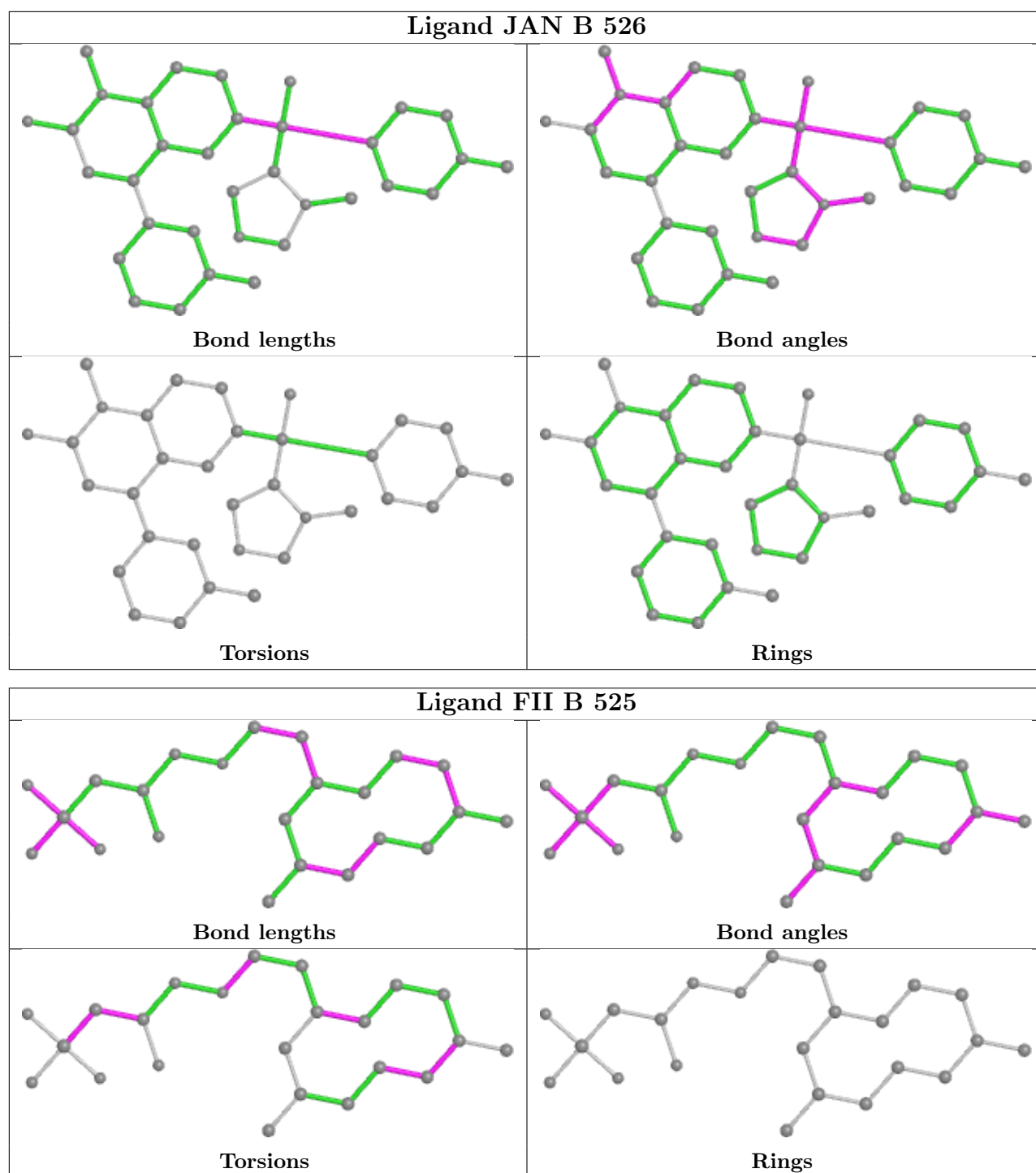
Mol	Chain	Res	Type	Atoms
5	B	525	FII	O44-C43-C45-P46

There are no ring outliers.

5 monomers are involved in 18 short contacts:

Mol	Chain	Res	Type	Clashes	Symm-Clashes
6	B	526	JAN	5	0
5	B	525	FII	11	0
4	B	522	3FX	2	0
4	B	523	3FX	1	0
4	B	524	3FX	1	0

The following is a two-dimensional graphical depiction of Mogul quality analysis of bond lengths, bond angles, torsion angles, and ring geometry for all instances of the Ligand of Interest. In addition, ligands with molecular weight > 250 and outliers as shown on the validation Tables will also be included. For torsion angles, if less than 5% of the Mogul distribution of torsion angles is within 10 degrees of the torsion angle in question, then that torsion angle is considered an outlier. Any bond that is central to one or more torsion angles identified as an outlier by Mogul will be highlighted in the graph. For rings, the root-mean-square deviation (RMSD) between the ring in question and similar rings identified by Mogul is calculated over all ring torsion angles. If the average RMSD is greater than 60 degrees and the minimal RMSD between the ring in question and any Mogul-identified rings is also greater than 60 degrees, then that ring is considered an outlier. The outliers are highlighted in purple. The color gray indicates Mogul did not find sufficient equivalents in the CSD to analyse the geometry.



5.7 Other polymers [i](#)

There are no such residues in this entry.

5.8 Polymer linkage issues [i](#)

There are no chain breaks in this entry.

6 Fit of model and data

6.1 Protein, DNA and RNA chains

In the following table, the column labelled ‘#RSRZ > 2’ contains the number (and percentage) of RSRZ outliers, followed by percent RSRZ outliers for the chain as percentile scores relative to all X-ray entries and entries of similar resolution. The OWAB column contains the minimum, median, 95th percentile and maximum values of the occupancy-weighted average B-factor per residue. The column labelled ‘Q < 0.9’ lists the number of (and percentage) of residues with an average occupancy less than 0.9.

Mol	Chain	Analysed	<RSRZ>	#RSRZ>2	OWAB(Å ²)	Q<0.9
1	A	315/349 (90%)	-0.01	17 (5%) 25 24	23, 37, 58, 68	0
2	B	485/520 (93%)	0.15	21 (4%) 35 34	20, 29, 51, 79	0
All	All	800/869 (92%)	0.09	38 (4%) 30 29	20, 32, 56, 79	0

All (38) RSRZ outliers are listed below:

Mol	Chain	Res	Type	RSRZ
2	B	349	VAL	8.0
1	A	5	THR	6.3
2	B	75	PHE	6.0
2	B	51	VAL	5.8
2	B	73	SER	5.7
1	A	334	ALA	5.6
2	B	2	ALA	5.1
2	B	74	PHE	4.5
2	B	72	SER	4.1
2	B	348	LYS	4.0
2	B	371	ILE	3.7
1	A	208	ARG	3.4
1	A	7	ILE	3.3
1	A	13	ARG	3.3
2	B	347	ARG	3.2
2	B	255	GLU	3.1
1	A	333	CYS	3.1
2	B	481	GLU	3.0
2	B	453	PRO	2.9
1	A	302	ASN	2.8
2	B	196	VAL	2.7
1	A	103	VAL	2.7
2	B	265	ALA	2.5
1	A	28	ASN	2.5

Continued on next page...

Continued from previous page...

Mol	Chain	Res	Type	RSRZ
1	A	11	GLN	2.5
2	B	330	VAL	2.3
1	A	204	GLU	2.3
1	A	34	MET	2.3
2	B	272	CYS	2.3
1	A	207	SER	2.2
1	A	6	TYR	2.2
1	A	211	GLN	2.2
2	B	4	GLU	2.1
2	B	52	SER	2.1
1	A	281	GLU	2.1
1	A	272	PHE	2.0
2	B	235	ALA	2.0
2	B	519	GLU	2.0

6.2 Non-standard residues in protein, DNA, RNA chains [i](#)

There are no non-standard protein/DNA/RNA residues in this entry.

6.3 Carbohydrates [i](#)

There are no monosaccharides in this entry.

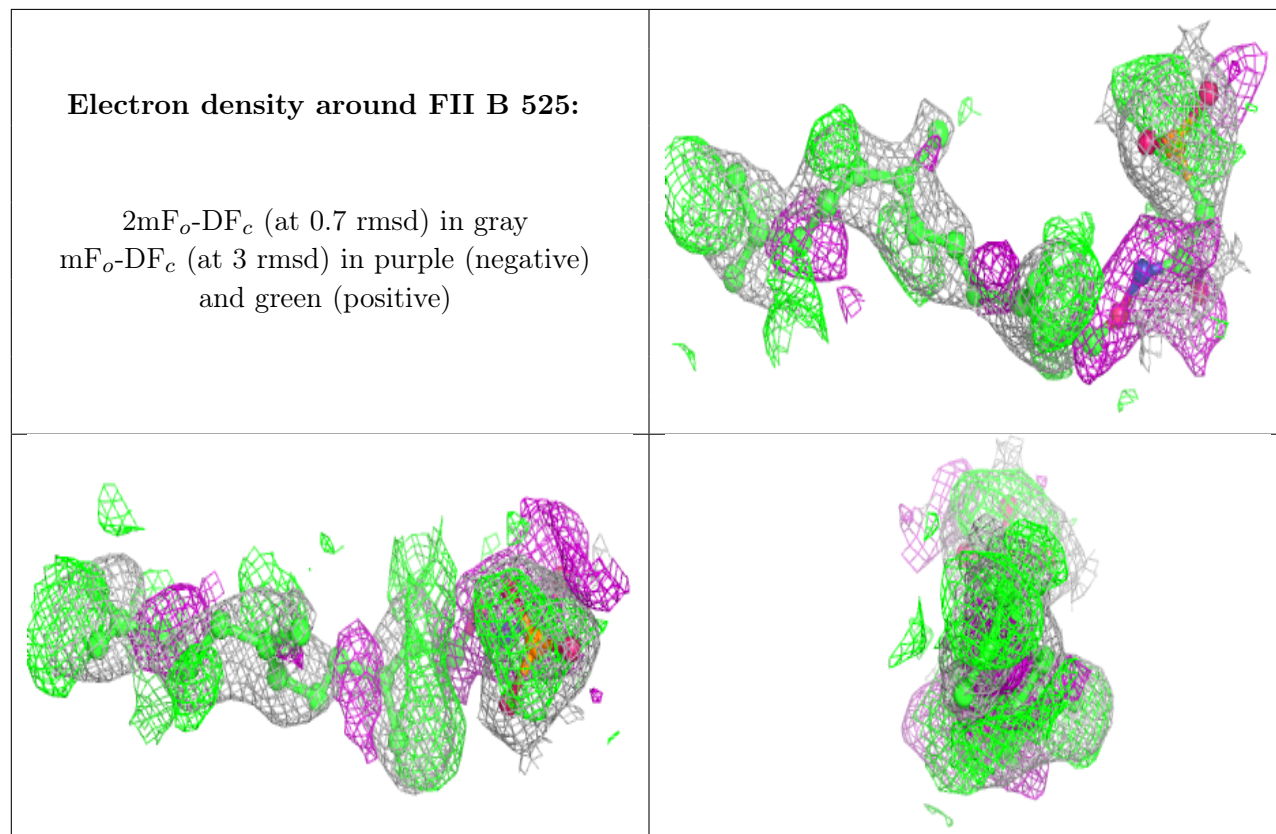
6.4 Ligands [i](#)

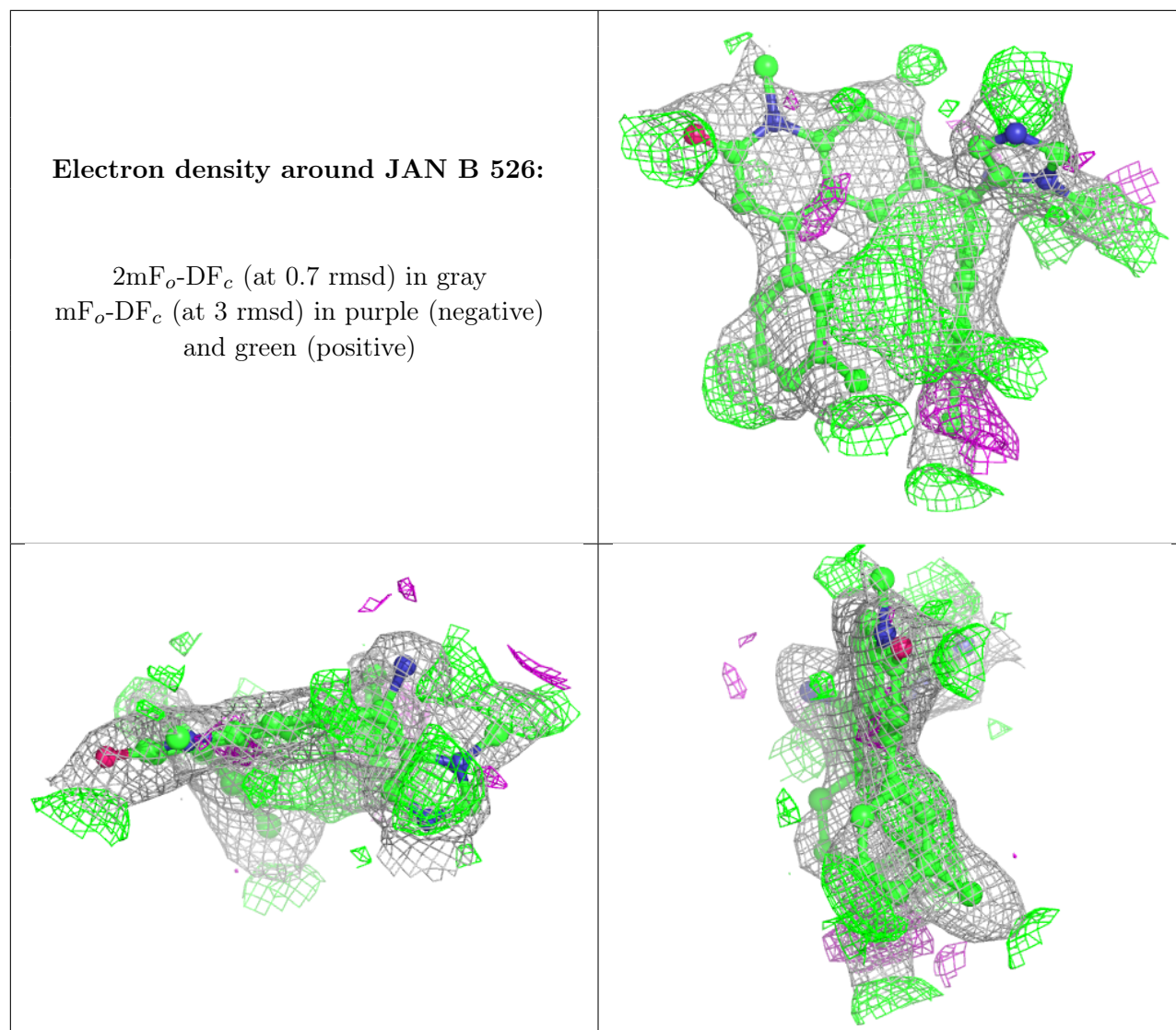
In the following table, the Atoms column lists the number of modelled atoms in the group and the number defined in the chemical component dictionary. The B-factors column lists the minimum, median, 95th percentile and maximum values of B factors of atoms in the group. The column labelled 'Q< 0.9' lists the number of atoms with occupancy less than 0.9.

Mol	Type	Chain	Res	Atoms	RSCC	RSR	B-factors(Å ²)	Q<0.9
4	3FX	B	524	15/15	0.76	0.25	59,66,75,76	0
5	FII	B	525	24/24	0.78	0.41	28,40,48,50	0
6	JAN	B	526	34/34	0.79	0.28	33,38,42,49	34
7	SO4	B	527	5/5	0.94	0.21	61,61,62,62	0
4	3FX	B	523	15/15	0.96	0.21	40,52,57,57	0
4	3FX	B	522	15/15	0.98	0.11	26,28,31,32	0
3	ZN	B	521	1/1	1.00	0.11	27,27,27,27	0

The following is a graphical depiction of the model fit to experimental electron density of all

instances of the Ligand of Interest. In addition, ligands with molecular weight > 250 and outliers as shown on the geometry validation Tables will also be included. Each fit is shown from different orientation to approximate a three-dimensional view.





6.5 Other polymers ⓘ

There are no such residues in this entry.