



Full wwPDB X-ray Structure Validation Report ⓘ

Sep 3, 2023 – 05:25 AM EDT

PDB ID : 3S95
Title : Crystal structure of the human LIMK1 kinase domain in complex with staurosporine
Authors : Beltrami, A.; Chaikuad, A.; Daga, N.; Elkins, J.M.; Mahajan, P.; Savitsky, P.; Vollmar, M.; Krojer, T.; Muniz, J.R.C.; Fedorov, O.; Allerston, C.K.; Yue, W.W.; Gileadi, O.; von Delft, F.; Arrowsmith, C.H.; Edwards, A.M.; Weigelt, J.; Bountra, C.; Knapp, S.; Bullock, A.; Structural Genomics Consortium (SGC)
Deposited on : 2011-05-31
Resolution : 1.65 Å(reported)

This is a Full wwPDB X-ray Structure Validation Report for a publicly released PDB entry.

We welcome your comments at validation@mail.wwpdb.org

A user guide is available at

<https://www.wwpdb.org/validation/2017/XrayValidationReportHelp>

with specific help available everywhere you see the ⓘ symbol.

The types of validation reports are described at

<http://www.wwpdb.org/validation/2017/FAQs#types>.

The following versions of software and data (see [references ⓘ](#)) were used in the production of this report:

MolProbity : 4.02b-467
Mogul : 1.8.5 (274361), CSD as541be (2020)
Xtriage (Phenix) : 1.13
EDS : 2.35
buster-report : 1.1.7 (2018)
Percentile statistics : 20191225.v01 (using entries in the PDB archive December 25th 2019)
Refmac : 5.8.0158
CCP4 : 7.0.044 (Gargrove)

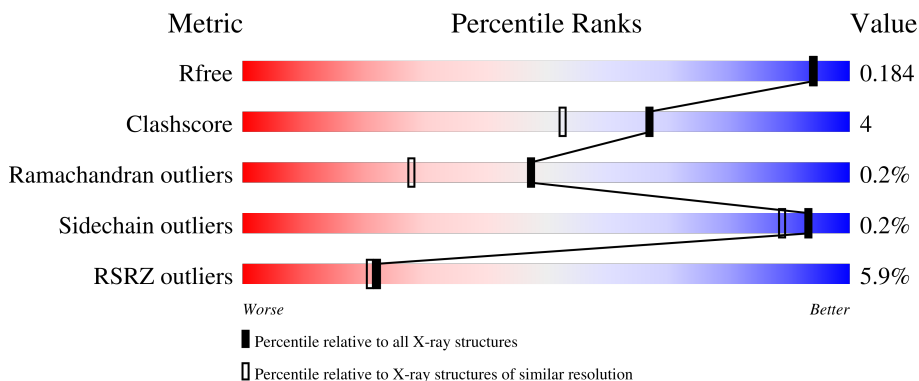
1 Overall quality at a glance

The following experimental techniques were used to determine the structure:

X-RAY DIFFRACTION

The reported resolution of this entry is 1.65 Å.

Percentile scores (ranging between 0-100) for global validation metrics of the entry are shown in the following graphic. The table shows the number of entries on which the scores are based.



Metric	Whole archive (#Entries)	Similar resolution (#Entries, resolution range(Å))
R_{free}	130704	1827 (1.66-1.66)
Clashscore	141614	1931 (1.66-1.66)
Ramachandran outliers	138981	1891 (1.66-1.66)
Sidechain outliers	138945	1891 (1.66-1.66)
RSRZ outliers	127900	1791 (1.66-1.66)

The table below summarises the geometric issues observed across the polymeric chains and their fit to the electron density. The red, orange, yellow and green segments of the lower bar indicate the fraction of residues that contain outliers for ≥ 3 , 2, 1 and 0 types of geometric quality criteria respectively. A grey segment represents the fraction of residues that are not modelled. The numeric value for each fraction is indicated below the corresponding segment, with a dot representing fractions $\leq 5\%$. The upper red bar (where present) indicates the fraction of residues that have poor fit to the electron density. The numeric value is given above the bar.

Mol	Chain	Length	Quality of chain
1	A	310	 5% 85% 8% 6%
1	B	310	 5% 88% 6% 6%

Ideal geometry (proteins) : Engh & Huber (2001)
 Ideal geometry (DNA, RNA) : Parkinson et al. (1996)
 Validation Pipeline (wwPDB-VP) : 2.35

2 Entry composition [i](#)

There are 8 unique types of molecules in this entry. The entry contains 5508 atoms, of which 0 are hydrogens and 0 are deuteriums.

In the tables below, the ZeroOcc column contains the number of atoms modelled with zero occupancy, the AltConf column contains the number of residues with at least one atom in alternate conformation and the Trace column contains the number of residues modelled with at most 2 atoms.

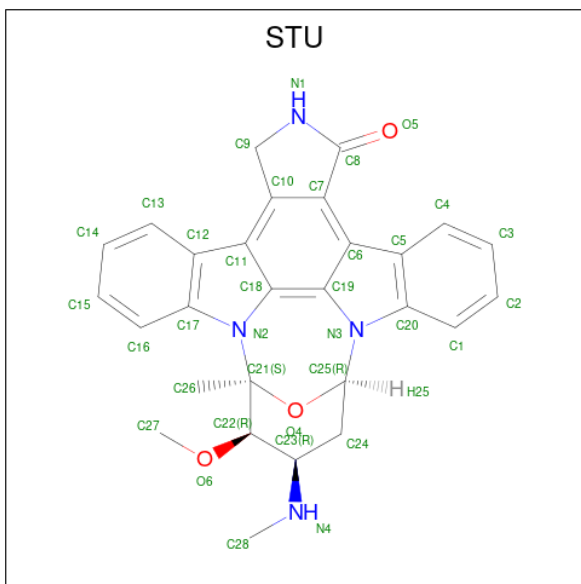
- Molecule 1 is a protein called LIM domain kinase 1.

Mol	Chain	Residues	Atoms					ZeroOcc	AltConf	Trace
			Total	C	N	O	S			
1	A	290	Total 2356	C 1508	N 412	O 415	S 21	0	7	0
1	B	290	Total 2400	C 1539	N 416	O 419	S 26	0	14	0

There are 4 discrepancies between the modelled and reference sequences:

Chain	Residue	Modelled	Actual	Comment	Reference
A	-1	SER	-	expression tag	UNP P53667
A	0	MET	-	expression tag	UNP P53667
B	-1	SER	-	expression tag	UNP P53667
B	0	MET	-	expression tag	UNP P53667

- Molecule 2 is STAUROSPORINE (three-letter code: STU) (formula: $C_{28}H_{26}N_4O_3$).

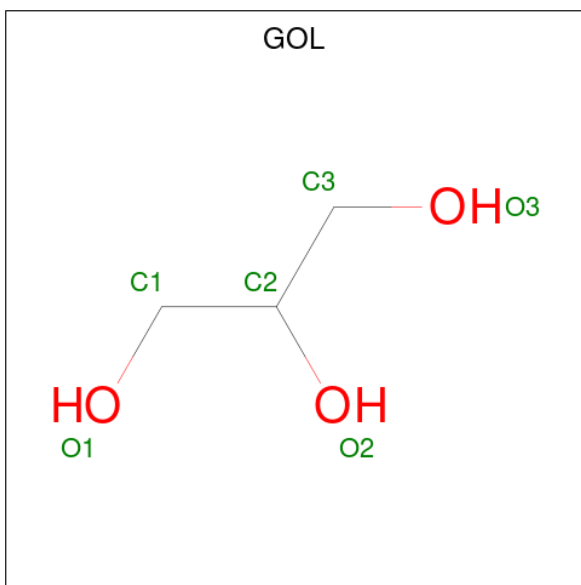


Mol	Chain	Residues	Atoms				ZeroOcc	AltConf
2	A	1	Total	C	N	O	0	0
			35	28	4	3		
2	B	1	Total	C	N	O	0	0
			35	28	4	3		

- Molecule 3 is SODIUM ION (three-letter code: NA) (formula: Na).

Mol	Chain	Residues	Atoms		ZeroOcc	AltConf
3	A	1	Total	Na	0	0
			1	1		
3	B	1	Total	Na	0	0
			1	1		

- Molecule 4 is GLYCEROL (three-letter code: GOL) (formula: C₃H₈O₃).



Mol	Chain	Residues	Atoms			ZeroOcc	AltConf
4	A	1	Total	C	O	0	0
			6	3	3		
4	A	1	Total	C	O	0	0
			6	3	3		
4	A	1	Total	C	O	0	0
			6	3	3		
4	A	1	Total	C	O	0	0
			6	3	3		
4	A	1	Total	C	O	0	1
			12	6	6		

Continued on next page...

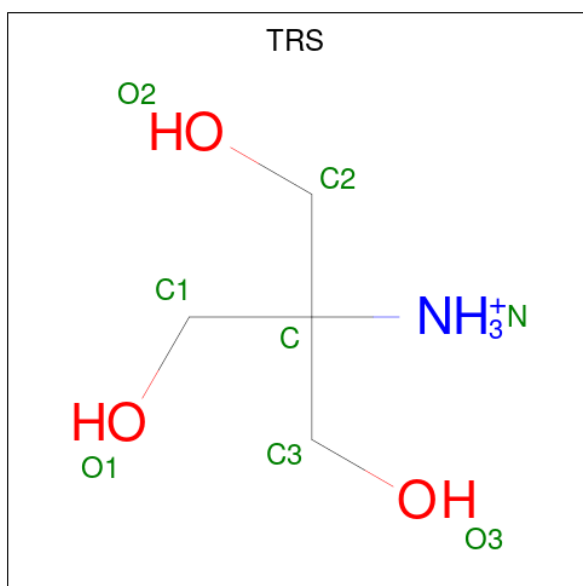
Continued from previous page...

Mol	Chain	Residues	Atoms			ZeroOcc	AltConf
4	A	1	Total	C	O	0	0
			6	3	3		
4	A	1	Total	C	O	0	0
			6	3	3		
4	A	1	Total	C	O	0	0
			6	3	3		
4	B	1	Total	C	O	0	0
			6	3	3		
4	B	1	Total	C	O	0	0
			6	3	3		

- Molecule 5 is CHLORIDE ION (three-letter code: CL) (formula: Cl).

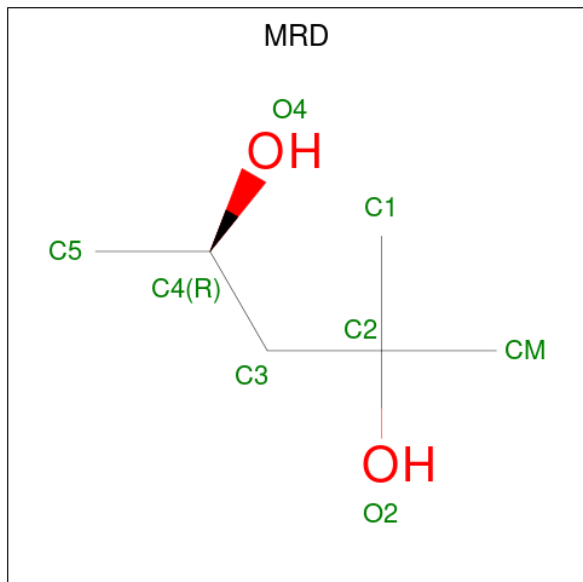
Mol	Chain	Residues	Atoms		ZeroOcc	AltConf
5	A	1	Total	Cl	0	0
			1	1		
5	B	1	Total	Cl	0	0
			1	1		

- Molecule 6 is 2-AMINO-2-HYDROXYMETHYL-PROPANE-1,3-DIOL (three-letter code: TRS) (formula: C₄H₁₂NO₃).



Mol	Chain	Residues	Atoms				ZeroOcc	AltConf
6	A	1	Total	C	N	O	0	0
			8	4	1	3		
6	B	1	Total	C	N	O	0	0
			8	4	1	3		

- Molecule 7 is (4R)-2-METHYLPENTANE-2,4-DIOL (three-letter code: MRD) (formula: $C_6H_{14}O_2$).



Mol	Chain	Residues	Atoms		ZeroOcc	AltConf
7	B	1	Total	C O	0	0
			8	6 2		

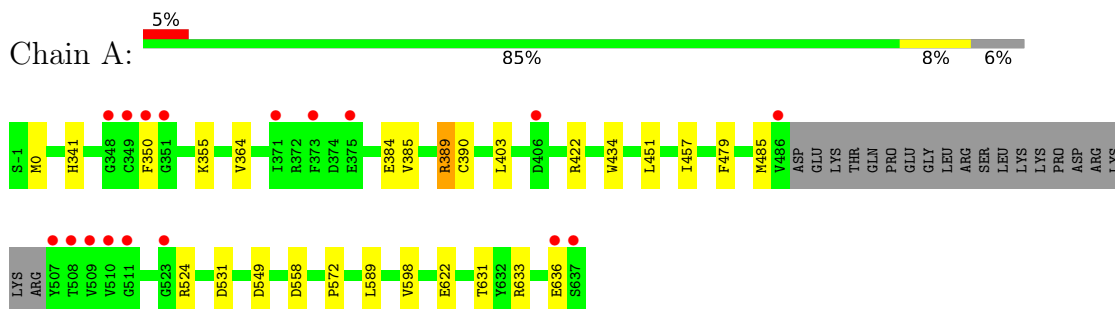
- Molecule 8 is water.

Mol	Chain	Residues	Atoms		ZeroOcc	AltConf
8	A	290	Total	O	0	0
			290	290		
8	B	292	Total	O	0	0
			292	292		

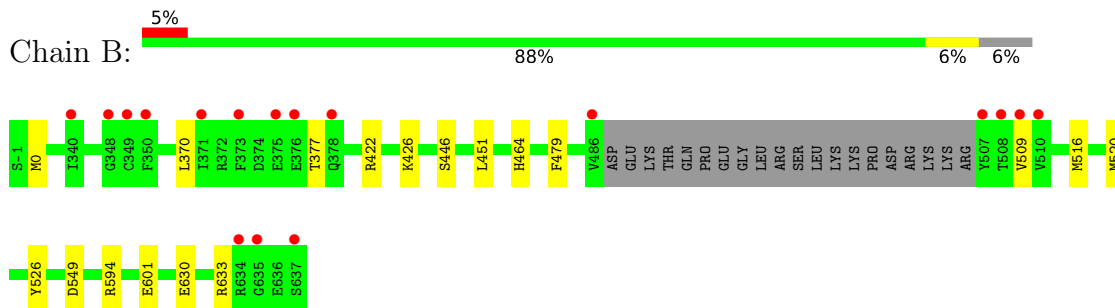
3 Residue-property plots [i](#)

These plots are drawn for all protein, RNA, DNA and oligosaccharide chains in the entry. The first graphic for a chain summarises the proportions of the various outlier classes displayed in the second graphic. The second graphic shows the sequence view annotated by issues in geometry and electron density. Residues are color-coded according to the number of geometric quality criteria for which they contain at least one outlier: green = 0, yellow = 1, orange = 2 and red = 3 or more. A red dot above a residue indicates a poor fit to the electron density ($RSRZ > 2$). Stretches of 2 or more consecutive residues without any outlier are shown as a green connector. Residues present in the sample, but not in the model, are shown in grey.

- Molecule 1: LIM domain kinase 1



- Molecule 1: LIM domain kinase 1



4 Data and refinement statistics

Property	Value	Source
Space group	C 2 2 21	Depositor
Cell constants a, b, c, α , β , γ	106.16Å 128.00Å 131.35Å 90.00° 90.00° 90.00°	Depositor
Resolution (Å)	40.86 – 1.65 40.86 – 1.65	Depositor EDS
% Data completeness (in resolution range)	98.4 (40.86-1.65) 98.4 (40.86-1.65)	Depositor EDS
R_{merge}	0.07	Depositor
R_{sym}	(Not available)	Depositor
$\langle I/\sigma(I) \rangle$ ¹	2.22 (at 1.65Å)	Xtrriage
Refinement program	REFMAC 5.5.0110	Depositor
R, R_{free}	0.155 , 0.181 0.161 , 0.184	Depositor DCC
R_{free} test set	5268 reflections (4.99%)	wwPDB-VP
Wilson B-factor (Å ²)	21.4	Xtrriage
Anisotropy	0.126	Xtrriage
Bulk solvent k_{sol} (e/Å ³), B_{sol} (Å ²)	0.32 , 49.6	EDS
L-test for twinning ²	$\langle L \rangle = 0.48$, $\langle L^2 \rangle = 0.31$	Xtrriage
Estimated twinning fraction	No twinning to report.	Xtrriage
F_o, F_c correlation	0.97	EDS
Total number of atoms	5508	wwPDB-VP
Average B, all atoms (Å ²)	32.0	wwPDB-VP

Xtrriage's analysis on translational NCS is as follows: *The largest off-origin peak in the Patterson function is 3.45% of the height of the origin peak. No significant pseudotranslation is detected.*

¹Intensities estimated from amplitudes.

²Theoretical values of $\langle |L| \rangle$, $\langle L^2 \rangle$ for acentric reflections are 0.5, 0.333 respectively for untwinned datasets, and 0.375, 0.2 for perfectly twinned datasets.

5 Model quality [i](#)

5.1 Standard geometry [i](#)

Bond lengths and bond angles in the following residue types are not validated in this section: TRS, STU, CL, GOL, NA, MRD

The Z score for a bond length (or angle) is the number of standard deviations the observed value is removed from the expected value. A bond length (or angle) with $|Z| > 5$ is considered an outlier worth inspection. RMSZ is the root-mean-square of all Z scores of the bond lengths (or angles).

Mol	Chain	Bond lengths		Bond angles	
		RMSZ	# Z >5	RMSZ	# Z >5
1	A	0.75	2/2434 (0.1%)	0.81	8/3287 (0.2%)
1	B	0.73	0/2499	0.78	3/3371 (0.1%)
All	All	0.74	2/4933 (0.0%)	0.79	11/6658 (0.2%)

All (2) bond length outliers are listed below:

Mol	Chain	Res	Type	Atoms	Z	Observed(Å)	Ideal(Å)
1	A	389	ARG	CB-CG	-6.82	1.34	1.52
1	A	384	GLU	CB-CG	-5.12	1.42	1.52

All (11) bond angle outliers are listed below:

Mol	Chain	Res	Type	Atoms	Z	Observed(°)	Ideal(°)
1	A	389	ARG	NE-CZ-NH1	-7.30	116.65	120.30
1	A	389	ARG	CG-CD-NE	-6.25	98.67	111.80
1	A	633	ARG	NE-CZ-NH2	6.21	123.41	120.30
1	A	0	MET	CG-SD-CE	-5.54	91.34	100.20
1	B	594	ARG	NE-CZ-NH2	-5.47	117.56	120.30
1	A	403	LEU	CA-CB-CG	5.39	127.69	115.30
1	A	531	ASP	CB-CG-OD1	5.37	123.13	118.30
1	B	594	ARG	NE-CZ-NH1	5.27	122.94	120.30
1	A	549	ASP	CB-CG-OD1	5.17	122.96	118.30
1	A	422	ARG	NE-CZ-NH2	5.08	122.84	120.30
1	B	549	ASP	CB-CG-OD1	5.03	122.82	118.30

There are no chirality outliers.

There are no planarity outliers.

5.2 Too-close contacts [i](#)

In the following table, the Non-H and H(model) columns list the number of non-hydrogen atoms and hydrogen atoms in the chain respectively. The H(added) column lists the number of hydrogen atoms added and optimized by MolProbity. The Clashes column lists the number of clashes within the asymmetric unit, whereas Symm-Clashes lists symmetry-related clashes.

Mol	Chain	Non-H	H(model)	H(added)	Clashes	Symm-Clashes
1	A	2356	0	2343	15	0
1	B	2400	0	2416	18	0
2	A	35	0	26	2	0
2	B	35	0	26	3	0
3	A	1	0	0	0	0
3	B	1	0	0	0	0
4	A	60	0	80	0	0
4	B	12	0	16	0	0
5	A	1	0	0	0	0
5	B	1	0	0	0	0
6	A	8	0	12	0	0
6	B	8	0	12	4	0
7	B	8	0	14	0	0
8	A	290	0	0	6	1
8	B	292	0	0	1	1
All	All	5508	0	4945	38	1

The all-atom clashscore is defined as the number of clashes found per 1000 atoms (including hydrogen atoms). The all-atom clashscore for this structure is 4.

All (38) close contacts within the same asymmetric unit are listed below, sorted by their clash magnitude.

Atom-1	Atom-2	Interatomic distance (Å)	Clash overlap (Å)
2:A:1:STU:H261	2:A:1:STU:H16	1.69	0.74
2:B:1:STU:H261	2:B:1:STU:H16	1.73	0.70
1:A:524:ARG:NH1	8:A:670:HOH:O	2.25	0.69
1:A:622[B]:GLU:OE2	8:A:774:HOH:O	2.10	0.69
1:B:516[B]:MET:CE	1:B:520[B]:MET:HE2	2.23	0.69
1:B:509:VAL:HG13	1:B:516[B]:MET:HE1	1.74	0.67
1:B:516[B]:MET:HE3	1:B:520[B]:MET:HE2	1.77	0.67
1:A:558:ASP:OD2	1:A:589:LEU:HD11	2.00	0.62
1:B:446[B]:SER:OG	1:B:601:GLU:OE2	2.19	0.59
1:B:422:ARG:HH21	6:B:641:TRS:H31	1.69	0.57
1:B:516[B]:MET:CE	1:B:520[B]:MET:CE	2.88	0.52
1:A:558:ASP:CG	1:A:589:LEU:HD11	2.31	0.52

Continued on next page...

Continued from previous page...

Atom-1	Atom-2	Interatomic distance (Å)	Clash overlap (Å)
1:A:598[B]:VAL:HG23	8:A:766:HOH:O	2.09	0.50
1:A:451[B]:LEU:HD11	1:A:479:PHE:HE1	1.76	0.49
1:A:457:ILE:HD11	1:A:485:MET:HG2	1.95	0.48
2:A:1:STU:H261	2:A:1:STU:C16	2.41	0.48
1:B:464:HIS:HB3	2:B:1:STU:H281	1.96	0.48
1:B:520[B]:MET:HE3	1:B:520[B]:MET:HB3	1.51	0.48
1:A:622[A]:GLU:CD	8:A:774:HOH:O	2.51	0.48
1:A:631:THR:CG2	1:A:636:GLU:HB2	2.44	0.47
1:B:520[B]:MET:HG2	1:B:526:TYR:CD2	2.51	0.46
1:B:370:LEU:HD22	1:B:377:THR:HG22	1.97	0.46
1:A:390[A]:CYS:SG	8:A:689:HOH:O	2.61	0.46
2:B:1:STU:H261	2:B:1:STU:C16	2.43	0.46
1:B:516[B]:MET:HE1	1:B:520[B]:MET:CE	2.47	0.44
6:B:641:TRS:H21	8:B:201:HOH:O	2.17	0.44
1:B:0[A]:MET:HE3	1:B:0[A]:MET:HB2	1.79	0.44
1:B:422:ARG:HH21	6:B:641:TRS:C3	2.28	0.44
1:A:631:THR:HG22	1:A:636:GLU:HB2	1.99	0.43
1:B:451[A]:LEU:HD11	1:B:479:PHE:HE1	1.84	0.43
1:A:355:LYS:HE3	1:A:364:VAL:HG11	2.01	0.42
1:B:426:LYS:NZ	6:B:641:TRS:H32	2.35	0.42
1:A:622[A]:GLU:OE1	8:A:775:HOH:O	2.21	0.41
1:B:0[A]:MET:HA	1:B:0[A]:MET:HE2	2.03	0.41
1:B:370:LEU:HD22	1:B:377:THR:CG2	2.50	0.41
1:B:630[A]:GLU:HG2	1:B:633:ARG:HH22	1.86	0.40
1:A:385:VAL:O	1:A:389:ARG:HG3	2.21	0.40
1:A:434:TRP:CZ2	1:A:572:PRO:HG2	2.56	0.40

All (1) symmetry-related close contacts are listed below. The label for Atom-2 includes the symmetry operator and encoded unit-cell translations to be applied.

Atom-1	Atom-2	Interatomic distance (Å)	Clash overlap (Å)
8:A:95:HOH:O	8:B:756:HOH:O[6_554]	2.05	0.15

5.3 Torsion angles [i](#)

5.3.1 Protein backbone [i](#)

In the following table, the Percentiles column shows the percent Ramachandran outliers of the chain as a percentile score with respect to all X-ray entries followed by that with respect to entries of similar resolution.

The Analysed column shows the number of residues for which the backbone conformation was analysed, and the total number of residues.

Mol	Chain	Analysed	Favoured	Allowed	Outliers	Percentiles	
1	A	293/310 (94%)	284 (97%)	8 (3%)	1 (0%)	41	22
1	B	300/310 (97%)	293 (98%)	7 (2%)	0	100	100
All	All	593/620 (96%)	577 (97%)	15 (2%)	1 (0%)	47	28

All (1) Ramachandran outliers are listed below:

Mol	Chain	Res	Type
1	A	350	PHE

5.3.2 Protein sidechains [i](#)

In the following table, the Percentiles column shows the percent sidechain outliers of the chain as a percentile score with respect to all X-ray entries followed by that with respect to entries of similar resolution.

The Analysed column shows the number of residues for which the sidechain conformation was analysed, and the total number of residues.

Mol	Chain	Analysed	Rotameric	Outliers	Percentiles	
1	A	258/279 (92%)	257 (100%)	1 (0%)	91	85
1	B	267/279 (96%)	267 (100%)	0	100	100
All	All	525/558 (94%)	524 (100%)	1 (0%)	93	89

All (1) residues with a non-rotameric sidechain are listed below:

Mol	Chain	Res	Type
1	A	341	HIS

Sometimes sidechains can be flipped to improve hydrogen bonding and reduce clashes. There are no such sidechains identified.

5.3.3 RNA [i](#)

There are no RNA molecules in this entry.

5.4 Non-standard residues in protein, DNA, RNA chains [i](#)

There are no non-standard protein/DNA/RNA residues in this entry.

5.5 Carbohydrates [i](#)

There are no monosaccharides in this entry.

5.6 Ligand geometry [i](#)

Of 21 ligands modelled in this entry, 4 are monoatomic - leaving 17 for Mogul analysis.

In the following table, the Counts columns list the number of bonds (or angles) for which Mogul statistics could be retrieved, the number of bonds (or angles) that are observed in the model and the number of bonds (or angles) that are defined in the Chemical Component Dictionary. The Link column lists molecule types, if any, to which the group is linked. The Z score for a bond length (or angle) is the number of standard deviations the observed value is removed from the expected value. A bond length (or angle) with $|Z| > 2$ is considered an outlier worth inspection. RMSZ is the root-mean-square of all Z scores of the bond lengths (or angles).

Mol	Type	Chain	Res	Link	Bond lengths			Bond angles		
					Counts	RMSZ	# Z > 2	Counts	RMSZ	# Z > 2
7	MRD	B	639	-	7,7,7	0.37	0	9,10,10	0.80	0
4	GOL	A	3	-	5,5,5	0.40	0	5,5,5	0.56	0
4	GOL	A	4	-	5,5,5	0.29	0	5,5,5	0.33	0
4	GOL	A	11	-	5,5,5	0.40	0	5,5,5	1.22	0
2	STU	A	1	-	30,42,42	1.80	7 (23%)	31,68,68	1.90	7 (22%)
4	GOL	A	5	-	5,5,5	0.37	0	5,5,5	0.26	0
4	GOL	A	8	-	5,5,5	0.32	0	5,5,5	0.15	0
4	GOL	A	9	-	5,5,5	0.33	0	5,5,5	0.61	0
4	GOL	B	2	-	5,5,5	0.34	0	5,5,5	0.26	0
4	GOL	A	7[A]	-	5,5,5	0.39	0	5,5,5	0.70	0
4	GOL	A	6	-	5,5,5	0.26	0	5,5,5	0.51	0
2	STU	B	1	-	30,42,42	1.78	6 (20%)	31,68,68	1.77	8 (25%)
6	TRS	B	641	-	7,7,7	0.61	0	9,9,9	1.47	1 (11%)
4	GOL	B	10	-	5,5,5	0.39	0	5,5,5	0.46	0
6	TRS	A	640	-	7,7,7	0.48	0	9,9,9	0.53	0
4	GOL	A	7[B]	-	5,5,5	0.32	0	5,5,5	0.56	0
4	GOL	A	638	-	5,5,5	0.34	0	5,5,5	0.24	0

In the following table, the Chirals column lists the number of chiral outliers, the number of chiral centers analysed, the number of these observed in the model and the number defined in the Chemical Component Dictionary. Similar counts are reported in the Torsion and Rings columns. '-' means no outliers of that kind were identified.

Mol	Type	Chain	Res	Link	Chirals	Torsions	Rings
7	MRD	B	639	-	-	0/5/5/5	-
4	GOL	A	3	-	-	0/4/4/4	-
4	GOL	A	4	-	-	2/4/4/4	-
4	GOL	A	11	-	-	4/4/4/4	-
2	STU	A	1	-	-	1/4/42/42	-
4	GOL	A	5	-	-	2/4/4/4	-
4	GOL	A	8	-	-	2/4/4/4	-
4	GOL	A	9	-	-	4/4/4/4	-
4	GOL	B	2	-	-	1/4/4/4	-
4	GOL	A	7[A]	-	-	2/4/4/4	-
4	GOL	A	6	-	-	2/4/4/4	-
2	STU	B	1	-	-	1/4/42/42	-
6	TRS	B	641	-	-	7/9/9/9	-
4	GOL	B	10	-	-	2/4/4/4	-
6	TRS	A	640	-	-	6/9/9/9	-
4	GOL	A	7[B]	-	-	3/4/4/4	-
4	GOL	A	638	-	-	2/4/4/4	-

All (13) bond length outliers are listed below:

Mol	Chain	Res	Type	Atoms	Z	Observed(Å)	Ideal(Å)
2	A	1	STU	C10-C11	-4.63	1.35	1.42
2	A	1	STU	C6-C19	-4.57	1.37	1.42
2	B	1	STU	C10-C11	-4.17	1.36	1.42
2	B	1	STU	C8-N1	4.15	1.38	1.35
2	B	1	STU	C9-N1	-3.94	1.41	1.45
2	A	1	STU	C26-C21	3.42	1.56	1.51
2	B	1	STU	C6-C19	-3.26	1.38	1.42
2	A	1	STU	C7-C8	-3.02	1.44	1.49
2	B	1	STU	C7-C8	-2.91	1.44	1.49
2	B	1	STU	C26-C21	2.77	1.55	1.51
2	A	1	STU	O6-C22	2.44	1.46	1.42
2	A	1	STU	C22-C23	2.17	1.55	1.52
2	A	1	STU	C8-N1	-2.14	1.33	1.35

All (16) bond angle outliers are listed below:

Mol	Chain	Res	Type	Atoms	Z	Observed(°)	Ideal(°)
2	A	1	STU	C27-O6-C22	-5.52	104.91	114.44
2	B	1	STU	C9-N1-C8	-4.23	109.78	113.85

Continued on next page...

Continued from previous page...

Mol	Chain	Res	Type	Atoms	Z	Observed(°)	Ideal(°)
2	A	1	STU	C9-N1-C8	-4.09	109.92	113.85
2	A	1	STU	C7-C8-N1	3.51	109.92	106.37
2	B	1	STU	C7-C8-N1	3.44	109.85	106.37
2	B	1	STU	C6-C7-C8	3.31	134.70	129.76
2	A	1	STU	O5-C8-N1	-3.30	121.41	125.27
2	B	1	STU	C10-C9-N1	3.10	104.92	101.76
2	B	1	STU	C27-O6-C22	-3.06	109.16	114.44
2	A	1	STU	C10-C9-N1	2.84	104.65	101.76
6	B	641	TRS	C3-C-N	2.81	116.36	107.98
2	A	1	STU	C14-C13-C12	-2.67	116.38	120.86
2	A	1	STU	C13-C12-C17	2.55	122.62	119.39
2	B	1	STU	O5-C8-N1	-2.41	122.45	125.27
2	B	1	STU	C14-C13-C12	-2.39	116.84	120.86
2	B	1	STU	C13-C12-C17	2.10	122.05	119.39

There are no chirality outliers.

All (41) torsion outliers are listed below:

Mol	Chain	Res	Type	Atoms
4	A	638	GOL	C1-C2-C3-O3
4	A	5	GOL	C1-C2-C3-O3
4	A	6	GOL	O1-C1-C2-O2
4	A	6	GOL	O1-C1-C2-C3
4	A	9	GOL	C1-C2-C3-O3
6	A	640	TRS	C1-C-C2-O2
6	A	640	TRS	C3-C-C2-O2
6	A	640	TRS	N-C-C2-O2
6	A	640	TRS	C1-C-C3-O3
6	A	640	TRS	C2-C-C3-O3
6	A	640	TRS	N-C-C3-O3
6	B	641	TRS	N-C-C1-O1
6	B	641	TRS	C2-C-C3-O3
6	B	641	TRS	N-C-C3-O3
4	A	9	GOL	O1-C1-C2-O2
4	A	4	GOL	C1-C2-C3-O3
4	A	7[A]	GOL	O1-C1-C2-C3
4	A	7[B]	GOL	O1-C1-C2-C3
4	A	8	GOL	C1-C2-C3-O3
4	A	9	GOL	O1-C1-C2-C3
4	A	11	GOL	C1-C2-C3-O3
4	B	10	GOL	C1-C2-C3-O3
4	A	5	GOL	O2-C2-C3-O3

Continued on next page...

Continued from previous page...

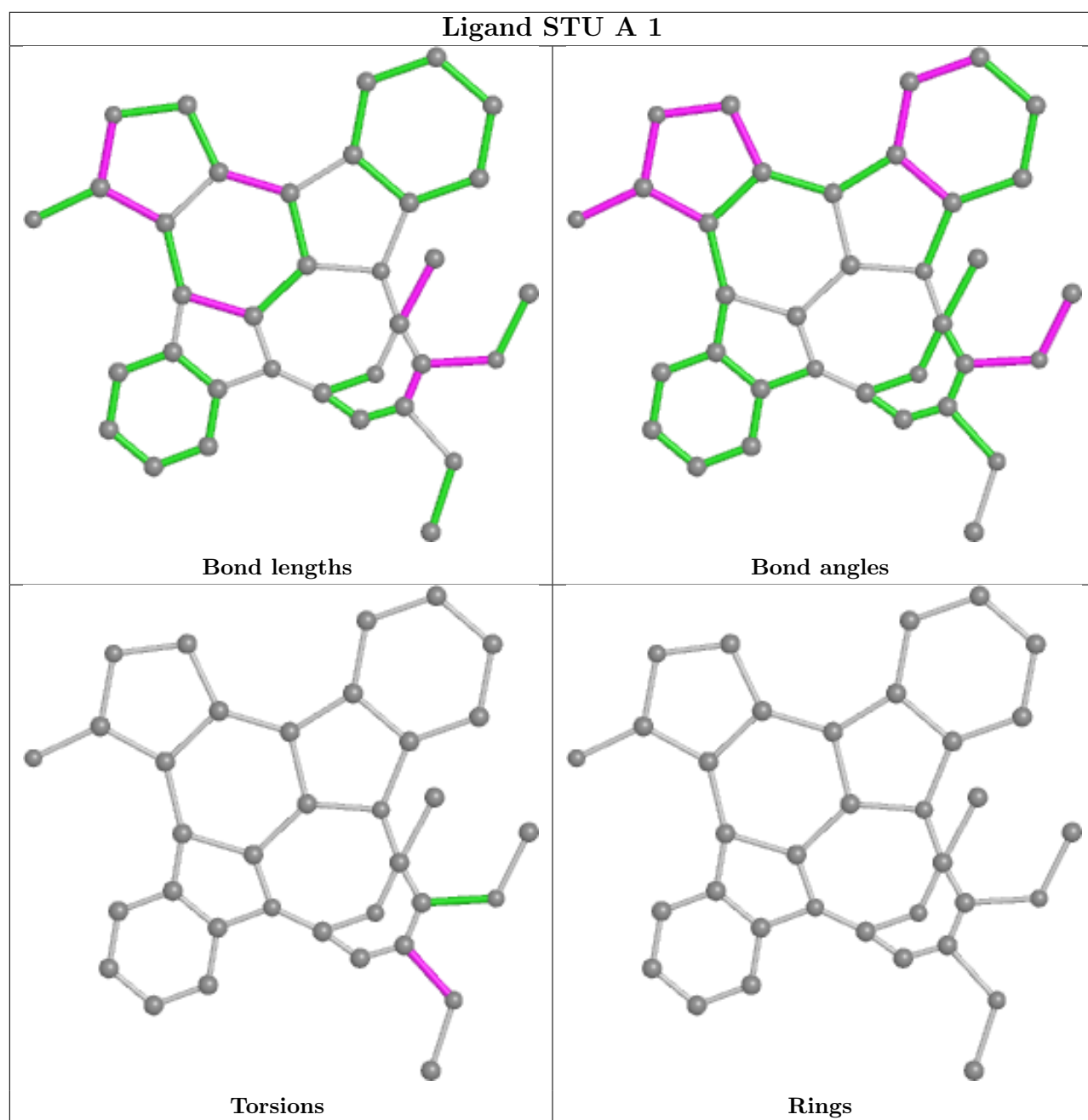
Mol	Chain	Res	Type	Atoms
4	A	7[A]	GOL	O1-C1-C2-O2
4	A	8	GOL	O2-C2-C3-O3
4	A	9	GOL	O2-C2-C3-O3
4	B	10	GOL	O2-C2-C3-O3
6	B	641	TRS	C3-C-C1-O1
4	A	638	GOL	O2-C2-C3-O3
4	A	7[B]	GOL	O2-C2-C3-O3
2	B	1	STU	C24-C23-N4-C28
4	A	11	GOL	O2-C2-C3-O3
6	B	641	TRS	C1-C-C2-O2
6	B	641	TRS	C1-C-C3-O3
4	A	4	GOL	O2-C2-C3-O3
2	A	1	STU	C24-C23-N4-C28
4	A	11	GOL	O1-C1-C2-O2
4	A	7[B]	GOL	O1-C1-C2-O2
6	B	641	TRS	C3-C-C2-O2
4	A	11	GOL	O1-C1-C2-C3
4	B	2	GOL	O1-C1-C2-O2

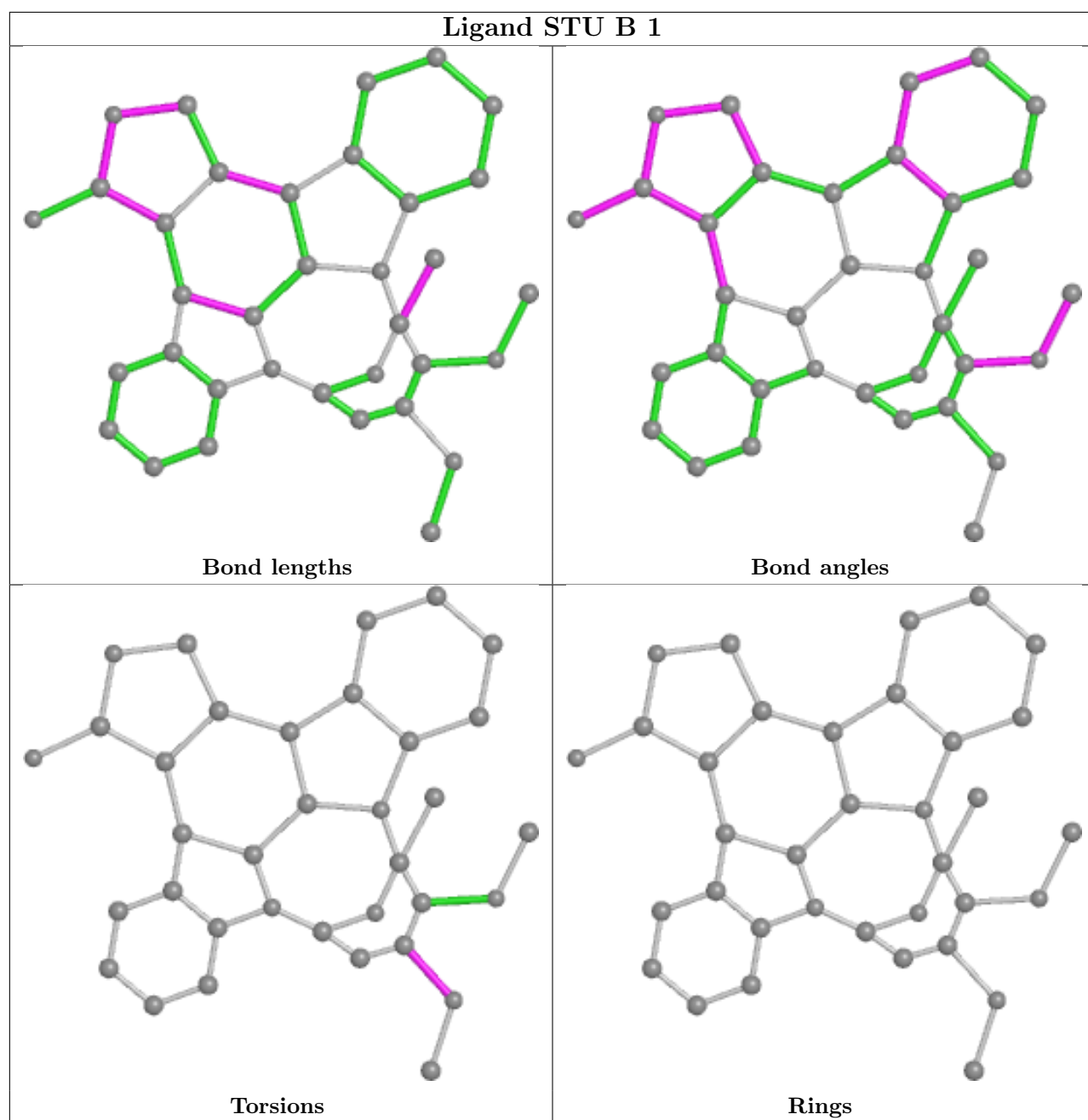
There are no ring outliers.

3 monomers are involved in 9 short contacts:

Mol	Chain	Res	Type	Clashes	Symm-Clashes
2	A	1	STU	2	0
2	B	1	STU	3	0
6	B	641	TRS	4	0

The following is a two-dimensional graphical depiction of Mogul quality analysis of bond lengths, bond angles, torsion angles, and ring geometry for all instances of the Ligand of Interest. In addition, ligands with molecular weight > 250 and outliers as shown on the validation Tables will also be included. For torsion angles, if less than 5% of the Mogul distribution of torsion angles is within 10 degrees of the torsion angle in question, then that torsion angle is considered an outlier. Any bond that is central to one or more torsion angles identified as an outlier by Mogul will be highlighted in the graph. For rings, the root-mean-square deviation (RMSD) between the ring in question and similar rings identified by Mogul is calculated over all ring torsion angles. If the average RMSD is greater than 60 degrees and the minimal RMSD between the ring in question and any Mogul-identified rings is also greater than 60 degrees, then that ring is considered an outlier. The outliers are highlighted in purple. The color gray indicates Mogul did not find sufficient equivalents in the CSD to analyse the geometry.





5.7 Other polymers [i](#)

There are no such residues in this entry.

5.8 Polymer linkage issues [i](#)

There are no chain breaks in this entry.

6 Fit of model and data

6.1 Protein, DNA and RNA chains

In the following table, the column labelled ‘#RSRZ > 2’ contains the number (and percentage) of RSRZ outliers, followed by percent RSRZ outliers for the chain as percentile scores relative to all X-ray entries and entries of similar resolution. The OWAB column contains the minimum, median, 95th percentile and maximum values of the occupancy-weighted average B-factor per residue. The column labelled ‘Q < 0.9’ lists the number of (and percentage) of residues with an average occupancy less than 0.9.

Mol	Chain	Analysed	<RSRZ>	#RSRZ>2	OWAB(Å ²)	Q<0.9
1	A	290/310 (93%)	-0.14	17 (5%) 22 21	13, 24, 79, 108	0
1	B	290/310 (93%)	-0.28	17 (5%) 22 21	13, 23, 77, 109	0
All	All	580/620 (93%)	-0.21	34 (5%) 22 21	13, 23, 78, 109	0

All (34) RSRZ outliers are listed below:

Mol	Chain	Res	Type	RSRZ
1	A	349	CYS	15.9
1	A	486	VAL	10.0
1	A	350	PHE	8.8
1	B	509	VAL	7.0
1	B	349	CYS	7.0
1	A	507	TYR	6.3
1	A	509	VAL	6.2
1	A	348	GLY	6.1
1	A	508	THR	5.9
1	B	507	TYR	5.8
1	B	486	VAL	5.6
1	B	371	ILE	5.0
1	A	637	SER	4.4
1	B	510	VAL	4.2
1	A	371	ILE	4.0
1	A	375	GLU	3.9
1	B	508	THR	3.7
1	A	406	ASP	3.3
1	B	375	GLU	3.3
1	A	510	VAL	3.2
1	B	348	GLY	3.2
1	B	376	GLU	2.9
1	A	373	PHE	2.8
1	B	637	SER	2.7

Continued on next page...

Continued from previous page...

Mol	Chain	Res	Type	RSRZ
1	A	636	GLU	2.6
1	A	351	GLY	2.5
1	B	373	PHE	2.4
1	B	378	GLN	2.4
1	B	340	ILE	2.3
1	B	350	PHE	2.3
1	B	634	ARG	2.2
1	A	511	GLY	2.2
1	A	523	GLY	2.1
1	B	635	GLY	2.0

6.2 Non-standard residues in protein, DNA, RNA chains [i](#)

There are no non-standard protein/DNA/RNA residues in this entry.

6.3 Carbohydrates [i](#)

There are no monosaccharides in this entry.

6.4 Ligands [i](#)

In the following table, the Atoms column lists the number of modelled atoms in the group and the number defined in the chemical component dictionary. The B-factors column lists the minimum, median, 95th percentile and maximum values of B factors of atoms in the group. The column labelled 'Q< 0.9' lists the number of atoms with occupancy less than 0.9.

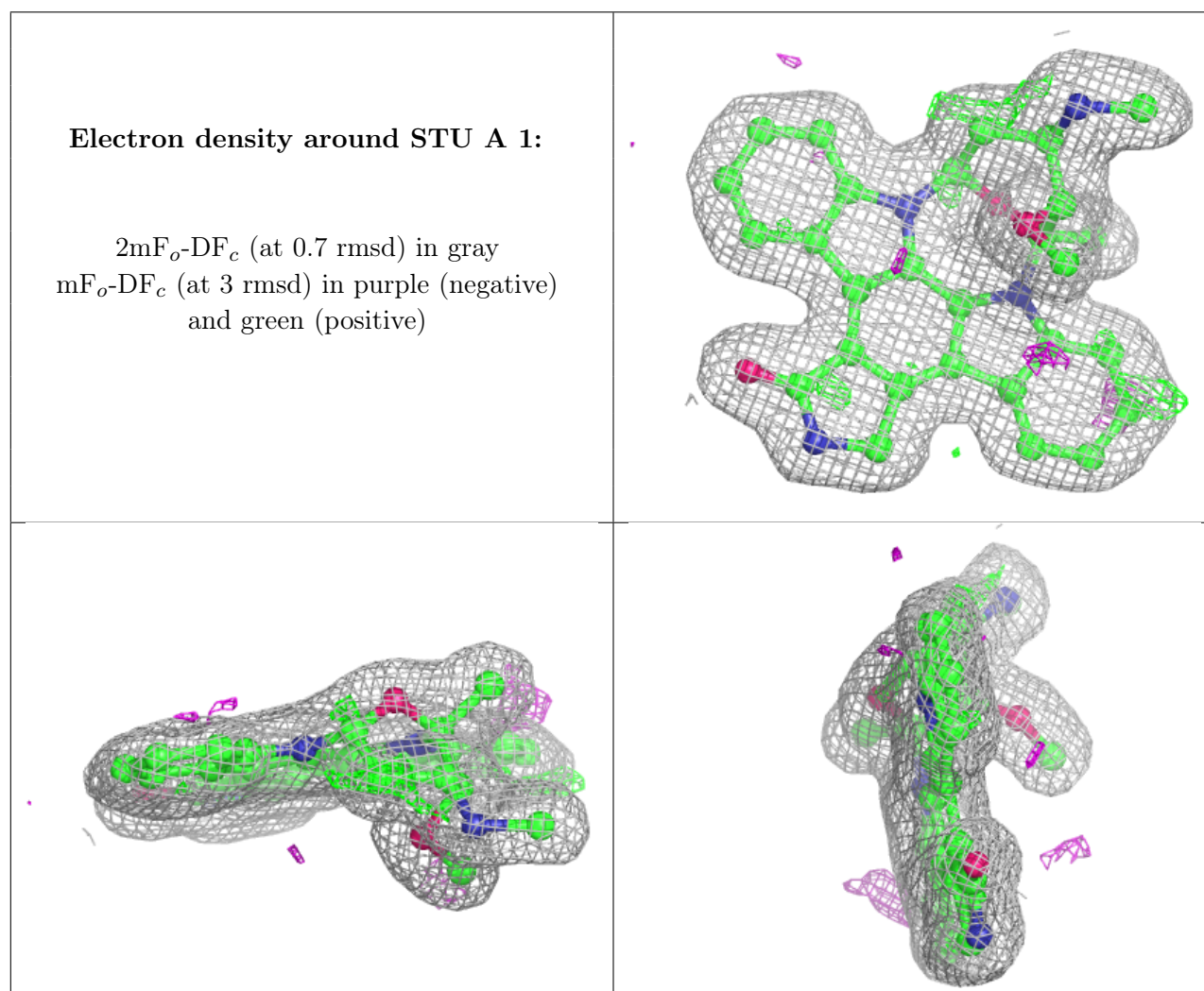
Mol	Type	Chain	Res	Atoms	RSCC	RSR	B-factors(Å ²)	Q<0.9
4	GOL	B	10	6/6	0.74	0.15	54,73,78,82	0
4	GOL	A	4	6/6	0.78	0.16	50,61,64,67	0
4	GOL	A	9	6/6	0.79	0.20	40,61,63,71	0
4	GOL	A	6	6/6	0.80	0.18	51,66,71,72	0
4	GOL	A	11	6/6	0.83	0.17	33,49,62,63	0
6	TRS	A	640	8/8	0.84	0.20	40,61,72,76	0
4	GOL	B	2	6/6	0.85	0.18	48,75,87,88	0
4	GOL	A	638	6/6	0.86	0.15	68,76,80,82	0
3	NA	B	638	1/1	0.86	0.27	31,31,31,31	1
3	NA	A	2	1/1	0.88	0.18	42,42,42,42	0
4	GOL	A	5	6/6	0.88	0.25	67,77,80,83	0
4	GOL	A	3	6/6	0.88	0.31	46,71,76,78	0
4	GOL	A	7[A]	6/6	0.88	0.17	21,27,37,45	6

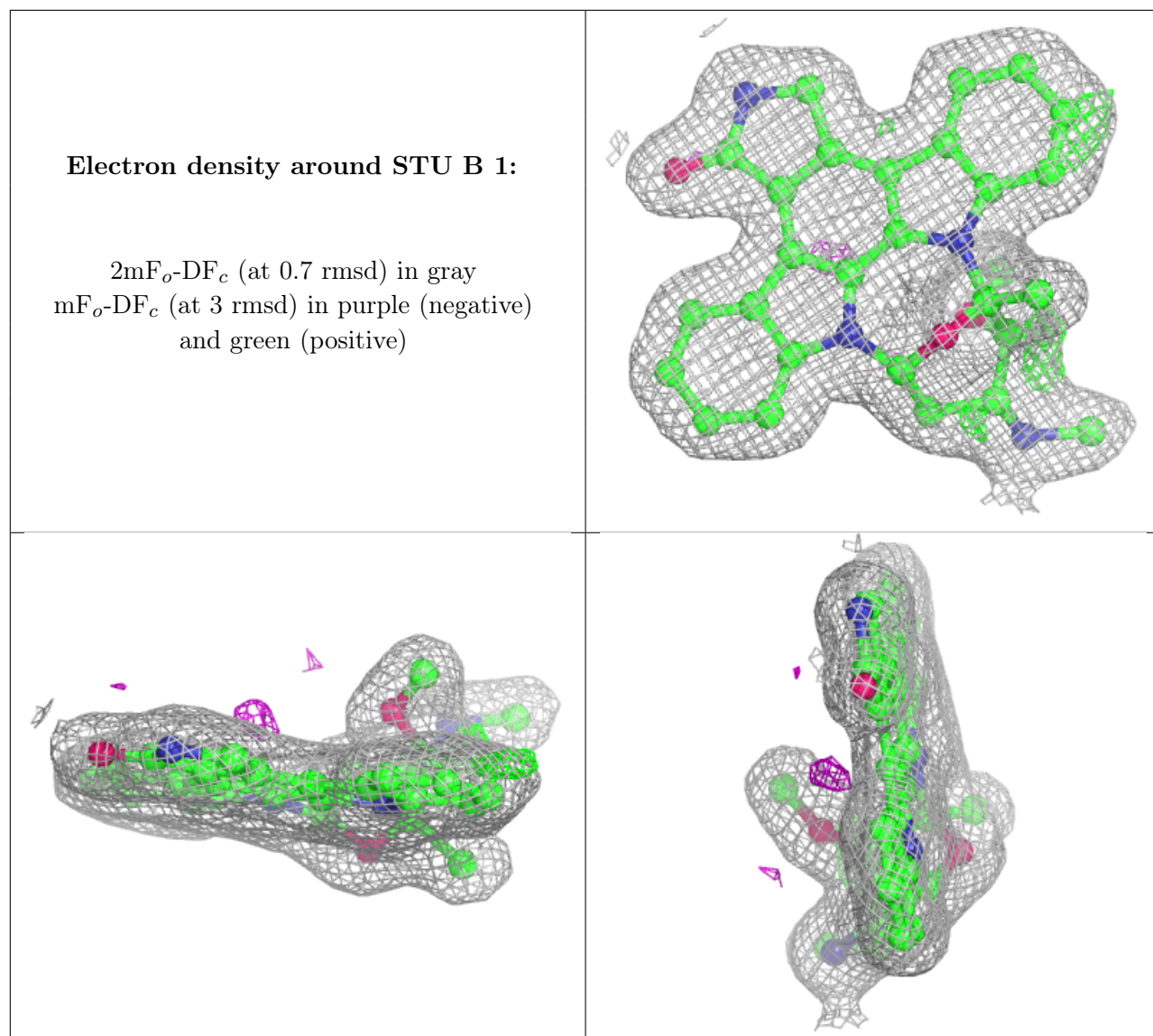
Continued on next page...

Continued from previous page...

Mol	Type	Chain	Res	Atoms	RSCC	RSR	B-factors(\AA^2)	Q<0.9
4	GOL	A	7[B]	6/6	0.88	0.17	27,44,46,50	6
4	GOL	A	8	6/6	0.92	0.13	54,62,74,82	0
6	TRS	B	641	8/8	0.93	0.19	30,41,50,60	0
2	STU	A	1	35/35	0.95	0.08	15,20,26,30	0
2	STU	B	1	35/35	0.95	0.07	16,21,28,38	0
7	MRD	B	639	8/8	0.95	0.08	30,35,40,42	0
5	CL	B	640	1/1	0.99	0.06	29,29,29,29	1
5	CL	A	639	1/1	0.99	0.05	25,25,25,25	0

The following is a graphical depiction of the model fit to experimental electron density of all instances of the Ligand of Interest. In addition, ligands with molecular weight > 250 and outliers as shown on the geometry validation Tables will also be included. Each fit is shown from different orientation to approximate a three-dimensional view.





6.5 Other polymers [\(i\)](#)

There are no such residues in this entry.