



# Full wwPDB X-ray Structure Validation Report ⓘ

Oct 31, 2023 – 09:13 AM EDT

PDB ID : 3QGT  
Title : Crystal structure of Wild-type PfdHFR-TS COMPLEXED WITH NADPH,  
dUMP AND PYRIMETHAMINE  
Authors : Chitnumsub, P.; Yuthavong, Y.  
Deposited on : 2011-01-24  
Resolution : 2.30 Å(reported)

This is a Full wwPDB X-ray Structure Validation Report for a publicly released PDB entry.

We welcome your comments at [validation@mail.wwpdb.org](mailto:validation@mail.wwpdb.org)

A user guide is available at

<https://www.wwpdb.org/validation/2017/XrayValidationReportHelp>

with specific help available everywhere you see the ⓘ symbol.

The types of validation reports are described at

<http://www.wwpdb.org/validation/2017/FAQs#types>.

---

The following versions of software and data (see [references ⓘ](#)) were used in the production of this report:

MolProbity : 4.02b-467  
Mogul : 1.8.5 (274361), CSD as541be (2020)  
Xtriage (Phenix) : 1.13  
EDS : 2.36  
buster-report : 1.1.7 (2018)  
Percentile statistics : 20191225.v01 (using entries in the PDB archive December 25th 2019)  
Refmac : 5.8.0158  
CCP4 : 7.0.044 (Gargrove)  
Ideal geometry (proteins) : Engh & Huber (2001)  
Ideal geometry (DNA, RNA) : Parkinson et al. (1996)  
Validation Pipeline (wwPDB-VP) : 2.36

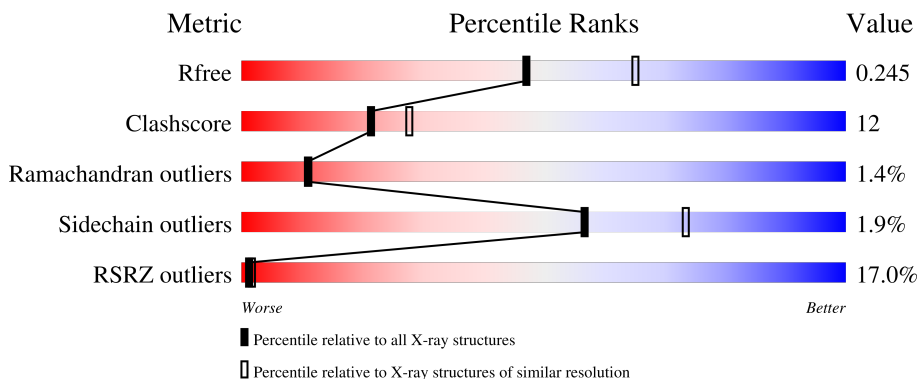
# 1 Overall quality at a glance

The following experimental techniques were used to determine the structure:

*X-RAY DIFFRACTION*

The reported resolution of this entry is 2.30 Å.

Percentile scores (ranging between 0-100) for global validation metrics of the entry are shown in the following graphic. The table shows the number of entries on which the scores are based.



Metric	Whole archive (#Entries)	Similar resolution (#Entries, resolution range(Å))
$R_{free}$	130704	5042 (2.30-2.30)
Clashscore	141614	5643 (2.30-2.30)
Ramachandran outliers	138981	5575 (2.30-2.30)
Sidechain outliers	138945	5575 (2.30-2.30)
RSRZ outliers	127900	4938 (2.30-2.30)

The table below summarises the geometric issues observed across the polymeric chains and their fit to the electron density. The red, orange, yellow and green segments of the lower bar indicate the fraction of residues that contain outliers for  $\geq 3$ , 2, 1 and 0 types of geometric quality criteria respectively. A grey segment represents the fraction of residues that are not modelled. The numeric value for each fraction is indicated below the corresponding segment, with a dot representing fractions  $\leq 5\%$ . The upper red bar (where present) indicates the fraction of residues that have poor fit to the electron density. The numeric value is given above the bar.

Mol	Chain	Length	Quality of chain
1	A	608	 10% 71% 17% 10%
1	B	608	 21% 63% 24% 11%

## 2 Entry composition [i](#)

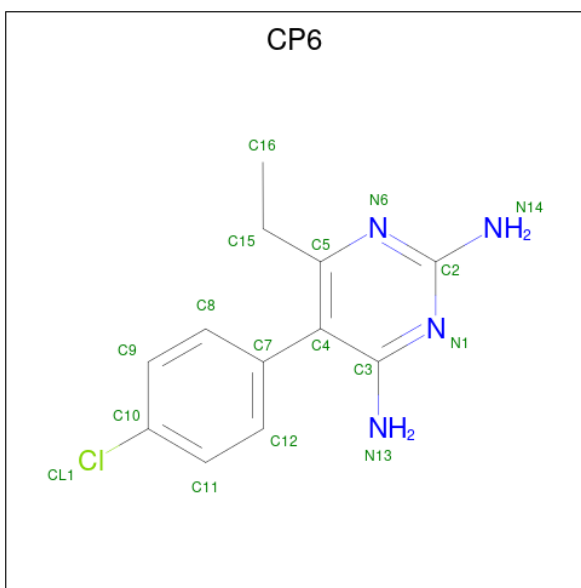
There are 5 unique types of molecules in this entry. The entry contains 9527 atoms, of which 0 are hydrogens and 0 are deuteriums.

In the tables below, the ZeroOcc column contains the number of atoms modelled with zero occupancy, the AltConf column contains the number of residues with at least one atom in alternate conformation and the Trace column contains the number of residues modelled with at most 2 atoms.

- Molecule 1 is a protein called Bifunctional dihydrofolate reductase-thymidylate synthase.

Mol	Chain	Residues	Atoms					ZeroOcc	AltConf	Trace
			Total	C	N	O	S			
1	A	547	Total 4543	C 2931	N 750	O 834	S 28	0	0	0
1	B	542	Total 4501	C 2906	N 742	O 825	S 28	0	0	0

- Molecule 2 is 5-(4-CHLORO-PHENYL)-6-ETHYL-PYRIMIDINE-2,4-DIAMINE (three-letter code: CP6) (formula: C<sub>12</sub>H<sub>13</sub>ClN<sub>4</sub>).



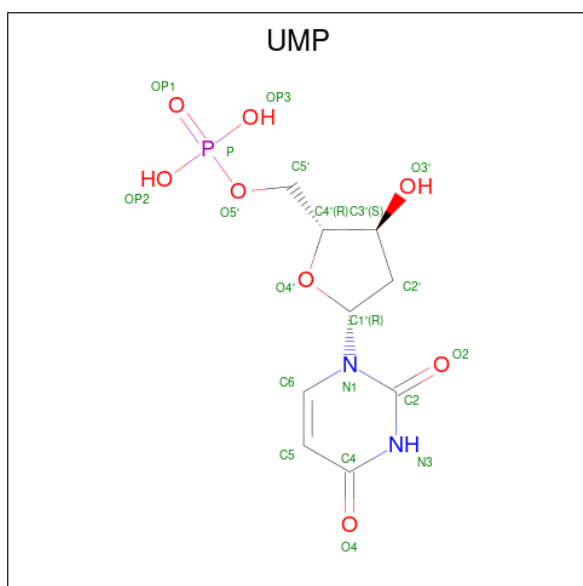
Mol	Chain	Residues	Atoms				ZeroOcc	AltConf
			Total	C	Cl	N		
2	A	1	Total 17	C 12	Cl 1	N 4	0	0
2	B	1	Total 17	C 12	Cl 1	N 4	0	0

- Molecule 3 is NADPH DIHYDRO-NICOTINAMIDE-ADENINE-DINUCLEOTIDE PHOSPHATE (three-letter code: NDP) (formula: C<sub>21</sub>H<sub>30</sub>N<sub>7</sub>O<sub>17</sub>P<sub>3</sub>).



Mol	Chain	Residues	Atoms				ZeroOcc	AltConf	
			Total	C	N	O			P
3	A	1	48	21	7	17	3	0	0
3	B	1	48	21	7	17	3	0	0

- Molecule 4 is 2'-DEOXYURIDINE 5'-MONOPHOSPHATE (three-letter code: UMP) (formula:  $C_9H_{13}N_2O_8P$ ).



Mol	Chain	Residues	Atoms				ZeroOcc	AltConf	
			Total	C	N	O			P
4	A	1	20	9	2	8	1	0	0

*Continued on next page...*

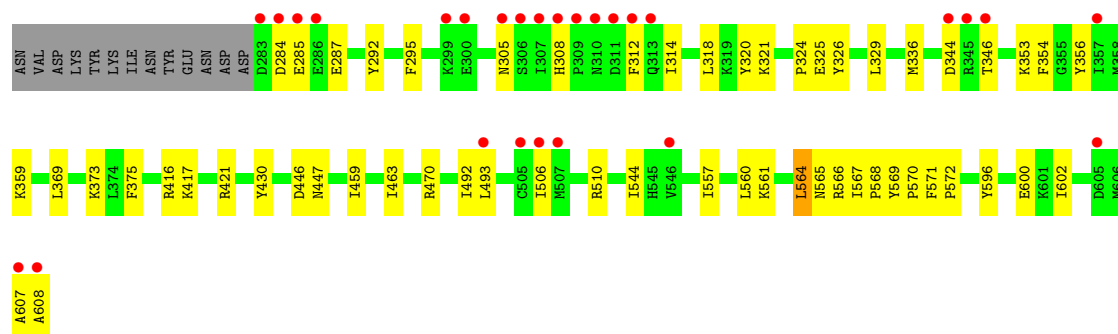
*Continued from previous page...*

Mol	Chain	Residues	Atoms					ZeroOcc	AltConf
4	B	1	Total	C	N	O	P	0	0
			20	9	2	8	1		

- Molecule 5 is water.

Mol	Chain	Residues	Atoms		ZeroOcc	AltConf
5	A	178	Total	O	0	0
			178	178		
5	B	135	Total	O	0	0
			135	135		





## 4 Data and refinement statistics

Property	Value	Source
Space group	P 21 21 21	Depositor
Cell constants a, b, c, $\alpha$ , $\beta$ , $\gamma$	56.10Å 154.44Å 164.00Å 90.00° 90.00° 90.00°	Depositor
Resolution (Å)	44.62 – 2.30 44.62 – 2.30	Depositor EDS
% Data completeness (in resolution range)	98.9 (44.62-2.30) 99.2 (44.62-2.30)	Depositor EDS
$R_{merge}$	0.08	Depositor
$R_{sym}$	(Not available)	Depositor
$\langle I/\sigma(I) \rangle$ <sup>1</sup>	3.30 (at 2.29Å)	Xtrriage
Refinement program	CNS	Depositor
R, $R_{free}$	0.222 , 0.260 0.210 , 0.245	Depositor DCC
$R_{free}$ test set	3186 reflections (5.01%)	wwPDB-VP
Wilson B-factor (Å <sup>2</sup> )	31.8	Xtrriage
Anisotropy	0.269	Xtrriage
Bulk solvent $k_{sol}$ (e/Å <sup>3</sup> ), $B_{sol}$ (Å <sup>2</sup> )	0.36 , 48.6	EDS
L-test for twinning <sup>2</sup>	$\langle  L  \rangle = 0.47$ , $\langle L^2 \rangle = 0.30$	Xtrriage
Estimated twinning fraction	No twinning to report.	Xtrriage
$F_o, F_c$ correlation	0.93	EDS
Total number of atoms	9527	wwPDB-VP
Average B, all atoms (Å <sup>2</sup> )	43.0	wwPDB-VP

Xtrriage's analysis on translational NCS is as follows: *The largest off-origin peak in the Patterson function is 3.65% of the height of the origin peak. No significant pseudotranslation is detected.*

<sup>1</sup>Intensities estimated from amplitudes.

<sup>2</sup>Theoretical values of  $\langle |L| \rangle$ ,  $\langle L^2 \rangle$  for acentric reflections are 0.5, 0.333 respectively for untwinned datasets, and 0.375, 0.2 for perfectly twinned datasets.



## 5 Model quality [i](#)

### 5.1 Standard geometry [i](#)

Bond lengths and bond angles in the following residue types are not validated in this section: UMP, CP6, NDP

The Z score for a bond length (or angle) is the number of standard deviations the observed value is removed from the expected value. A bond length (or angle) with  $|Z| > 5$  is considered an outlier worth inspection. RMSZ is the root-mean-square of all Z scores of the bond lengths (or angles).

Mol	Chain	Bond lengths		Bond angles	
		RMSZ	# Z  >5	RMSZ	# Z  >5
1	A	0.38	0/4648	0.65	2/6272 (0.0%)
1	B	0.36	0/4606	0.62	2/6217 (0.0%)
All	All	0.37	0/9254	0.63	4/12489 (0.0%)

Chiral center outliers are detected by calculating the chiral volume of a chiral center and verifying if the center is modelled as a planar moiety or with the opposite hand. A planarity outlier is detected by checking planarity of atoms in a peptide group, atoms in a mainchain group or atoms of a sidechain that are expected to be planar.

Mol	Chain	#Chirality outliers	#Planarity outliers
1	A	0	1

There are no bond length outliers.

All (4) bond angle outliers are listed below:

Mol	Chain	Res	Type	Atoms	Z	Observed( $^{\circ}$ )	Ideal( $^{\circ}$ )
1	A	165	GLY	N-CA-C	6.17	128.54	113.10
1	B	166	GLY	N-CA-C	-5.79	98.62	113.10
1	A	166	GLY	N-CA-C	-5.68	98.89	113.10
1	B	165	GLY	N-CA-C	5.62	127.15	113.10

There are no chirality outliers.

All (1) planarity outliers are listed below:

Mol	Chain	Res	Type	Group
1	A	326	TYR	Sidechain

## 5.2 Too-close contacts

In the following table, the Non-H and H(model) columns list the number of non-hydrogen atoms and hydrogen atoms in the chain respectively. The H(added) column lists the number of hydrogen atoms added and optimized by MolProbity. The Clashes column lists the number of clashes within the asymmetric unit, whereas Symm-Clashes lists symmetry-related clashes.

Mol	Chain	Non-H	H(model)	H(added)	Clashes	Symm-Clashes
1	A	4543	0	4497	102	0
1	B	4501	0	4452	121	0
2	A	17	0	13	3	0
2	B	17	0	13	1	0
3	A	48	0	26	9	0
3	B	48	0	26	2	0
4	A	20	0	11	0	0
4	B	20	0	11	0	0
5	A	178	0	0	10	0
5	B	135	0	0	4	0
All	All	9527	0	9049	219	0

The all-atom clashscore is defined as the number of clashes found per 1000 atoms (including hydrogen atoms). The all-atom clashscore for this structure is 12.

All (219) close contacts within the same asymmetric unit are listed below, sorted by their clash magnitude.

Atom-1	Atom-2	Interatomic distance (Å)	Clash overlap (Å)
1:A:345:ARG:HE	1:A:348:VAL:HG21	1.12	1.07
1:A:24:ASN:N	1:A:24:ASN:HD22	1.50	1.06
1:B:114:LYS:HD2	1:B:114:LYS:H	1.25	1.01
1:A:24:ASN:HD22	1:A:24:ASN:H	1.09	0.90
1:A:24:ASN:N	1:A:24:ASN:ND2	2.26	0.83
1:A:24:ASN:H	1:A:24:ASN:ND2	1.76	0.81
1:A:332:ILE:HD13	1:A:560:LEU:HD22	1.61	0.80
1:A:165:GLY:HA3	3:A:610:NDP:H5N	1.64	0.79
1:B:127:LEU:HD12	1:B:143:ILE:HD11	1.63	0.79
1:A:345:ARG:NE	1:A:348:VAL:HG21	1.94	0.77
1:B:163:ILE:C	1:B:165:GLY:H	1.87	0.77
1:B:29:ASN:HD22	1:B:32:PHE:HE1	1.33	0.76
1:A:166:GLY:HA3	3:A:610:NDP:O1A	1.86	0.76
1:A:27:LYS:HD2	1:A:27:LYS:O	1.85	0.76
1:A:76:LYS:O	1:A:79:LYS:HG2	1.89	0.72
1:A:164:ILE:HG23	5:A:1257:HOH:O	1.89	0.71
1:A:78:CYS:HB3	1:A:83:LYS:O	1.91	0.71

*Continued on next page...*

*Continued from previous page...*

Atom-1	Atom-2	Interatomic distance (Å)	Clash overlap (Å)
1:A:206:GLN:HG3	1:A:229:THR:CG2	2.22	0.70
1:B:312:PHE:HE1	1:B:561:LYS:HA	1.57	0.69
1:B:41:GLY:HA2	1:B:47:PRO:HD3	1.74	0.69
1:B:312:PHE:HA	1:B:565:ASN:HD21	1.58	0.69
1:A:41:GLY:HA2	1:A:47:PRO:HD3	1.74	0.67
1:A:144:ASN:ND2	1:A:145:LYS:HG2	2.11	0.66
1:B:124:ASN:H	1:B:124:ASN:HD22	1.44	0.65
1:B:29:ASN:HB2	1:B:32:PHE:CE1	2.31	0.65
1:A:376:LEU:HD22	1:A:379:ILE:HD11	1.78	0.65
1:A:103:VAL:N	5:A:1257:HOH:O	2.27	0.64
1:B:98:LEU:HD11	1:B:158:TYR:O	1.98	0.64
1:B:121:ASN:N	1:B:121:ASN:HD22	1.94	0.64
1:B:3:GLU:HA	1:B:80:TYR:CE1	2.33	0.63
1:A:166:GLY:HA3	3:A:610:NDP:PA	2.39	0.63
1:A:284:ASP:O	1:A:287:GLU:HB3	1.99	0.63
1:A:171:GLN:HG3	1:A:175:GLU:OE2	1.99	0.62
1:A:344:ASP:HB2	1:B:470:ARG:NH1	2.15	0.62
1:B:100:ASN:OD1	1:B:159:TYR:HB3	1.98	0.62
1:B:132:LYS:HE2	1:B:135:ASP:OD2	1.99	0.62
1:A:124:ASN:N	1:A:124:ASN:HD22	1.98	0.61
1:B:167:SER:HB3	3:B:610:NDP:O2N	2.01	0.61
1:A:493:LEU:C	1:A:493:LEU:HD12	2.20	0.61
1:B:182:ILE:HB	1:B:226:TYR:HB2	1.83	0.60
1:B:114:LYS:HD2	1:B:114:LYS:N	2.07	0.60
1:B:607:ALA:O	1:B:608:ALA:CB	2.50	0.59
1:A:480:LYS:HD3	5:A:1128:HOH:O	2.02	0.59
1:B:12:TYR:CE2	1:B:160:LYS:HD3	2.38	0.58
1:B:137:ASP:HB2	1:B:140:VAL:HG23	1.85	0.58
1:B:13:ALA:HB2	1:B:179:ILE:HD12	1.85	0.57
1:B:127:LEU:CD1	1:B:143:ILE:HD11	2.32	0.57
1:A:16:ALA:HA	1:A:185:THR:HB	1.87	0.57
1:A:506:ILE:HG13	1:B:354:PHE:CE2	2.39	0.57
1:B:208:ILE:HA	5:B:1037:HOH:O	2.04	0.57
1:A:206:GLN:HG3	1:A:229:THR:HG22	1.86	0.57
1:B:163:ILE:C	1:B:165:GLY:N	2.56	0.57
1:B:114:LYS:H	1:B:114:LYS:CD	1.98	0.56
1:A:127:LEU:HD23	1:A:143:ILE:HG13	1.87	0.56
1:B:566:ARG:NH1	1:B:602:ILE:HD11	2.20	0.56
1:A:454:ASP:OD2	1:A:457:LYS:HG3	2.06	0.56
1:A:328:TYR:CZ	1:A:332:ILE:HD11	2.41	0.56
1:B:40:LEU:O	3:B:610:NDP:H2N	2.06	0.56

*Continued on next page...*

*Continued from previous page...*

Atom-1	Atom-2	Interatomic distance (Å)	Clash overlap (Å)
1:A:344:ASP:CG	1:A:345:ARG:H	2.10	0.55
1:B:12:TYR:CE1	1:B:180:LYS:HD3	2.41	0.55
1:B:207:ILE:HB	1:B:567:ILE:HD13	1.88	0.55
1:A:76:LYS:HA	1:A:79:LYS:HE2	1.89	0.55
1:A:376:LEU:HD22	1:A:379:ILE:CD1	2.35	0.55
1:A:382:GLU:O	1:A:385:TRP:HB3	2.06	0.55
1:B:373:LYS:HE2	1:B:375:PHE:CE1	2.41	0.55
1:B:8:VAL:HG22	5:B:1042:HOH:O	2.06	0.55
1:B:12:TYR:HE2	1:B:160:LYS:HD3	1.72	0.55
1:B:98:LEU:HD11	1:B:158:TYR:C	2.27	0.55
1:B:121:ASN:N	1:B:121:ASN:ND2	2.55	0.54
1:B:145:LYS:O	1:B:148:ASP:HB2	2.07	0.54
1:B:171:GLN:HG3	1:B:175:GLU:OE2	2.07	0.54
1:A:35:TYR:CZ	1:A:38:ARG:HD3	2.43	0.54
1:B:112:ILE:HB	1:B:117:LYS:HD3	1.90	0.54
1:A:41:GLY:O	1:A:195:VAL:HG12	2.08	0.54
1:A:344:ASP:CG	1:A:345:ARG:N	2.61	0.53
1:B:166:GLY:O	1:B:167:SER:C	2.47	0.53
1:A:290:PHE:HB2	1:B:320:TYR:OH	2.09	0.53
1:A:27:LYS:O	1:A:27:LYS:CD	2.56	0.53
1:B:13:ALA:O	1:B:182:ILE:HA	2.09	0.53
1:B:127:LEU:HD12	1:B:143:ILE:CD1	2.37	0.53
1:A:27:LYS:C	1:A:29:ASN:H	2.12	0.52
1:B:73:LEU:O	1:B:77:ARG:HG3	2.10	0.52
1:B:171:GLN:HE21	1:B:175:GLU:CG	2.23	0.52
1:B:80:TYR:O	1:B:81:LEU:C	2.48	0.52
1:A:301:GLU:H	1:A:304:LYS:HE3	1.74	0.52
1:A:354:PHE:CE2	1:B:506:ILE:HG13	2.46	0.51
1:A:459:ILE:HG13	1:A:460:ILE:N	2.26	0.51
1:B:113:PRO:HB2	1:B:116:PHE:HD2	1.76	0.51
1:B:207:ILE:HB	1:B:567:ILE:CD1	2.41	0.51
1:A:289:ASP:HA	1:A:292:TYR:CD2	2.46	0.51
1:B:171:GLN:HE21	1:B:175:GLU:HG3	1.76	0.51
1:B:569:TYR:HB3	1:B:570:PRO:HD2	1.93	0.50
1:A:446:ASP:OD1	1:A:447:ASN:N	2.44	0.50
1:A:572:PRO:HB3	1:A:596:TYR:HA	1.92	0.50
1:B:324:PRO:HB2	1:B:571:PHE:HE2	1.77	0.50
1:A:48:TRP:O	1:A:49:LYS:HB2	2.11	0.50
1:B:572:PRO:HB3	1:B:596:TYR:HA	1.93	0.50
1:A:106:ARG:HE	3:A:610:NDP:P2B	2.35	0.50
1:A:454:ASP:CG	1:A:457:LYS:HG3	2.32	0.50

*Continued on next page...*

*Continued from previous page...*

Atom-1	Atom-2	Interatomic distance (Å)	Clash overlap (Å)
1:B:210:VAL:HG12	1:B:224:ILE:HG22	1.94	0.50
1:A:402:ARG:HG2	1:A:402:ARG:HH11	1.77	0.49
1:B:77:ARG:O	1:B:81:LEU:HG	2.12	0.49
1:B:344:ASP:C	1:B:346:THR:H	2.15	0.49
1:B:124:ASN:HD22	1:B:124:ASN:N	2.10	0.49
2:A:609:CP6:H163	5:A:1103:HOH:O	2.12	0.49
1:A:124:ASN:HB2	1:A:140:VAL:HG12	1.95	0.49
1:B:194:ASP:OD1	1:B:195:VAL:HG13	2.13	0.49
1:B:229:THR:C	1:B:231:ASN:N	2.65	0.48
1:A:357:ILE:HG23	5:A:1266:HOH:O	2.12	0.48
1:A:24:ASN:HB3	1:A:28:LYS:NZ	2.28	0.48
1:A:100:ASN:OD1	1:A:159:TYR:HB3	2.14	0.48
1:A:164:ILE:HD12	2:A:609:CP6:H11	1.94	0.48
1:B:2:MET:O	1:B:3:GLU:HG3	2.13	0.48
1:B:40:LEU:HD12	1:B:196:PHE:C	2.34	0.48
1:A:164:ILE:HG12	5:A:1257:HOH:O	2.14	0.48
1:A:582:ASN:HB3	5:A:1250:HOH:O	2.13	0.48
1:A:19:LYS:HG2	1:A:36:THR:HG22	1.96	0.48
1:B:71:GLU:HA	1:B:74:LYS:HB3	1.96	0.48
1:B:102:VAL:HG23	1:B:102:VAL:O	2.14	0.48
1:A:289:ASP:HA	1:A:292:TYR:HD2	1.78	0.48
1:B:74:LYS:O	1:B:78:CYS:SG	2.68	0.47
1:B:600:GLU:HG3	5:B:1007:HOH:O	2.14	0.47
1:A:287:GLU:O	1:A:290:PHE:HB3	2.14	0.47
1:B:210:VAL:HG21	1:B:326:TYR:HE2	1.80	0.47
1:B:312:PHE:HA	1:B:565:ASN:ND2	2.28	0.47
1:A:127:LEU:O	3:A:610:NDP:H1B	2.13	0.47
1:B:5:VAL:HG11	1:B:150:ILE:HD12	1.97	0.47
1:B:58:PHE:CZ	2:B:609:CP6:H12	2.49	0.47
1:B:312:PHE:CZ	1:B:561:LYS:HG2	2.49	0.47
1:B:312:PHE:CE1	1:B:561:LYS:HG2	2.50	0.47
1:A:172:GLU:OE2	3:A:610:NDP:N7A	2.48	0.46
1:A:324:PRO:HB2	1:A:571:PHE:HE2	1.81	0.46
1:A:329:LEU:HD22	1:A:564:LEU:HD12	1.97	0.46
1:B:201:ASN:HB3	1:B:204:GLU:HG3	1.95	0.46
1:A:350:VAL:HG12	1:A:553:TYR:CD1	2.51	0.46
1:A:492:ILE:HD11	1:A:510:ARG:HD3	1.97	0.46
1:B:113:PRO:HB2	1:B:116:PHE:CD2	2.50	0.46
1:A:109:TRP:CE2	1:A:117:LYS:HD2	2.50	0.46
1:B:446:ASP:OD1	1:B:447:ASN:N	2.48	0.46
1:A:166:GLY:HA2	3:A:610:NDP:O5D	2.16	0.46

*Continued on next page...*

*Continued from previous page...*

Atom-1	Atom-2	Interatomic distance (Å)	Clash overlap (Å)
1:B:329:LEU:HD22	1:B:564:LEU:HD12	1.98	0.46
1:B:416:ARG:O	1:B:417:LYS:HB2	2.16	0.46
1:B:41:GLY:H	1:B:195:VAL:HG23	1.81	0.45
1:B:42:ASN:HA	1:B:194:ASP:OD2	2.16	0.45
1:B:336:MET:HE2	1:B:557:ILE:HG23	1.97	0.45
1:A:292:TYR:O	1:A:295:PHE:HB3	2.16	0.45
1:B:325:GLU:HG3	1:B:369:LEU:HD22	1.98	0.45
1:A:299:LYS:HD2	1:A:299:LYS:HA	1.77	0.45
1:A:344:ASP:HB2	1:B:470:ARG:CZ	2.47	0.45
5:A:1179:HOH:O	1:B:470:ARG:HD3	2.17	0.45
1:B:17:CYS:HA	1:B:39:GLY:O	2.17	0.45
1:B:37:PHE:O	1:B:184:PHE:HZ	1.98	0.45
1:B:3:GLU:HA	1:B:80:TYR:HE1	1.78	0.45
1:A:220:THR:HG23	1:A:573:THR:CG2	2.47	0.45
1:B:359:LYS:HG2	1:B:544:ILE:HG12	1.98	0.45
1:A:584:GLU:HB2	5:A:1250:HOH:O	2.16	0.44
1:B:492:ILE:HD11	1:B:510:ARG:HD3	1.99	0.44
1:B:152:LEU:HG	1:B:156:LEU:HD12	1.99	0.44
1:A:506:ILE:HG12	1:A:544:ILE:HB	1.99	0.44
1:A:165:GLY:HA2	1:A:170:TYR:CZ	2.52	0.44
1:B:4:GLN:HG3	1:B:7:ASP:OD2	2.17	0.44
1:B:48:TRP:O	1:B:49:LYS:HB3	2.17	0.44
1:A:35:TYR:CE2	1:A:38:ARG:HD3	2.53	0.44
1:B:459:ILE:O	1:B:463:ILE:HG13	2.18	0.44
1:B:493:LEU:HD12	1:B:493:LEU:C	2.37	0.44
1:A:447:ASN:OD1	1:A:449:GLU:HG2	2.18	0.43
1:B:153:LEU:HD22	1:B:158:TYR:CZ	2.53	0.43
1:B:506:ILE:HG12	1:B:544:ILE:HB	2.00	0.43
1:B:336:MET:HE3	1:B:560:LEU:HB2	2.00	0.43
1:A:214:TYR:O	1:A:220:THR:HA	2.18	0.43
1:B:292:TYR:O	1:B:295:PHE:HB3	2.18	0.43
1:A:345:ARG:O	1:A:346:THR:C	2.57	0.43
1:B:229:THR:C	1:B:231:ASN:H	2.20	0.43
1:A:470:ARG:HD3	5:B:1025:HOH:O	2.18	0.43
1:B:284:ASP:O	1:B:287:GLU:HB3	2.19	0.43
1:B:567:ILE:HA	1:B:568:PRO:HD3	1.91	0.43
1:A:167:SER:OG	1:A:195:VAL:CG2	2.67	0.43
1:B:26:GLY:O	1:B:27:LYS:HB3	2.19	0.43
1:B:421:ARG:HH11	1:B:421:ARG:HG2	1.85	0.42
1:A:325:GLU:HG3	1:A:369:LEU:HD22	2.02	0.42
1:A:364:GLN:O	1:A:365:TYR:HB3	2.19	0.42

*Continued on next page...*

*Continued from previous page...*

Atom-1	Atom-2	Interatomic distance (Å)	Clash overlap (Å)
1:B:16:ALA:HA	1:B:185:THR:HB	2.01	0.42
1:B:76:LYS:HA	1:B:79:LYS:HB3	2.00	0.42
1:B:124:ASN:N	1:B:124:ASN:ND2	2.66	0.42
1:B:210:VAL:HG23	1:B:210:VAL:O	2.20	0.42
1:A:28:LYS:HA	1:A:28:LYS:HD3	1.49	0.42
1:A:599:HIS:HA	5:A:1308:HOH:O	2.20	0.42
1:A:210:VAL:HG12	1:A:323:HIS:HB2	2.01	0.42
1:A:109:TRP:CZ2	1:A:117:LYS:HD2	2.55	0.42
1:A:40:LEU:O	3:A:610:NDP:H2N	2.20	0.42
1:A:421:ARG:HG2	1:A:421:ARG:HH11	1.84	0.42
1:B:214:TYR:O	1:B:220:THR:HA	2.20	0.42
1:A:54:ASP:OD2	2:A:609:CP6:H163	2.20	0.42
1:B:6:CYS:HB3	1:B:178:LEU:HA	2.00	0.42
1:A:124:ASN:N	1:A:124:ASN:ND2	2.66	0.42
1:A:423:VAL:O	1:A:424:ASN:HB2	2.20	0.41
1:A:165:GLY:HA3	3:A:610:NDP:C5N	2.44	0.41
1:A:172:GLU:HA	1:A:175:GLU:HB2	2.01	0.41
1:A:375:PHE:N	1:A:375:PHE:CD1	2.89	0.41
1:A:112:ILE:HB	1:A:117:LYS:HD3	2.01	0.41
1:A:344:ASP:OD2	1:A:345:ARG:HG2	2.21	0.41
1:B:314:ILE:O	1:B:318:LEU:HG	2.21	0.41
1:B:104:MET:HB3	1:B:164:ILE:HD11	2.03	0.41
1:A:144:ASN:HD22	1:A:145:LYS:HG2	1.84	0.41
1:A:343:SER:O	1:A:344:ASP:C	2.59	0.41
1:B:19:LYS:HG2	1:B:36:THR:HG22	2.02	0.41
1:B:125:VAL:HG12	1:B:126:ILE:N	2.36	0.41
1:B:208:ILE:HD13	1:B:227:LYS:HD2	2.03	0.41
1:B:353:LYS:HG3	1:B:356:TYR:OH	2.20	0.41
1:A:312:PHE:HB2	1:A:316:ASN:HD21	1.84	0.41
1:B:142:ILE:HG22	1:B:143:ILE:N	2.34	0.41
1:B:318:LEU:HD12	1:B:321:LYS:HD3	2.03	0.41
1:B:12:TYR:CD1	1:B:181:LYS:HB2	2.56	0.40
1:B:138:GLU:C	1:B:140:VAL:H	2.22	0.40
1:B:4:GLN:C	1:B:8:VAL:HG23	2.41	0.40
1:B:168:VAL:O	1:B:172:GLU:HG2	2.21	0.40
1:B:171:GLN:HA	1:B:198:PRO:HG2	2.03	0.40
1:A:353:LYS:HG3	1:A:356:TYR:OH	2.22	0.40
1:B:3:GLU:HG2	1:B:80:TYR:HE1	1.87	0.40

There are no symmetry-related clashes.

## 5.3 Torsion angles [i](#)

### 5.3.1 Protein backbone [i](#)

In the following table, the Percentiles column shows the percent Ramachandran outliers of the chain as a percentile score with respect to all X-ray entries followed by that with respect to entries of similar resolution.

The Analysed column shows the number of residues for which the backbone conformation was analysed, and the total number of residues.

Mol	Chain	Analysed	Favoured	Allowed	Outliers	Percentiles	
1	A	541/608 (89%)	505 (93%)	28 (5%)	8 (2%)	10	10
1	B	536/608 (88%)	486 (91%)	43 (8%)	7 (1%)	12	12
All	All	1077/1216 (89%)	991 (92%)	71 (7%)	15 (1%)	11	11

All (15) Ramachandran outliers are listed below:

Mol	Chain	Res	Type
1	B	5	VAL
1	A	24	ASN
1	A	346	THR
1	A	430	TYR
1	B	165	GLY
1	B	430	TYR
1	A	302	LYS
1	A	49	LYS
1	A	308	HIS
1	A	344	ASP
1	B	308	HIS
1	A	21	GLU
1	B	3	GLU
1	B	146	VAL
1	B	164	ILE

### 5.3.2 Protein sidechains [i](#)

In the following table, the Percentiles column shows the percent sidechain outliers of the chain as a percentile score with respect to all X-ray entries followed by that with respect to entries of similar resolution.

The Analysed column shows the number of residues for which the sidechain conformation was analysed, and the total number of residues.



Mol	Chain	Analysed	Rotameric	Outliers	Percentiles	
1	A	510/570 (90%)	502 (98%)	8 (2%)	62	78
1	B	505/570 (89%)	494 (98%)	11 (2%)	52	69
All	All	1015/1140 (89%)	996 (98%)	19 (2%)	57	73

All (19) residues with a non-rotameric sidechain are listed below:

Mol	Chain	Res	Type
1	A	24	ASN
1	A	27	LYS
1	A	50	CYS
1	A	124	ASN
1	A	144	ASN
1	A	284	ASP
1	A	301	GLU
1	A	487	LEU
1	B	7	ASP
1	B	50	CYS
1	B	55	MET
1	B	114	LYS
1	B	121	ASN
1	B	124	ASN
1	B	127	LEU
1	B	231	ASN
1	B	285	GLU
1	B	305	ASN
1	B	564	LEU

Sometimes sidechains can be flipped to improve hydrogen bonding and reduce clashes. All (15) such sidechains are listed below:

Mol	Chain	Res	Type
1	A	24	ASN
1	A	99	GLN
1	A	144	ASN
1	A	316	ASN
1	A	394	ASN
1	A	407	ASN
1	A	424	ASN
1	B	29	ASN
1	B	99	GLN
1	B	121	ASN
1	B	171	GLN

*Continued on next page...*

Continued from previous page...

Mol	Chain	Res	Type
1	B	394	ASN
1	B	407	ASN
1	B	424	ASN
1	B	554	ASN

### 5.3.3 RNA [i](#)

There are no RNA molecules in this entry.

### 5.4 Non-standard residues in protein, DNA, RNA chains [i](#)

There are no non-standard protein/DNA/RNA residues in this entry.

### 5.5 Carbohydrates [i](#)

There are no monosaccharides in this entry.

### 5.6 Ligand geometry [i](#)

6 ligands are modelled in this entry.

In the following table, the Counts columns list the number of bonds (or angles) for which Mogul statistics could be retrieved, the number of bonds (or angles) that are observed in the model and the number of bonds (or angles) that are defined in the Chemical Component Dictionary. The Link column lists molecule types, if any, to which the group is linked. The Z score for a bond length (or angle) is the number of standard deviations the observed value is removed from the expected value. A bond length (or angle) with  $|Z| > 2$  is considered an outlier worth inspection. RMSZ is the root-mean-square of all Z scores of the bond lengths (or angles).

Mol	Type	Chain	Res	Link	Bond lengths			Bond angles		
					Counts	RMSZ	# Z  > 2	Counts	RMSZ	# Z  > 2
4	UMP	A	611	-	21,21,21	1.61	4 (19%)	31,31,31	1.86	9 (29%)
4	UMP	B	611	-	21,21,21	1.82	6 (28%)	31,31,31	1.96	10 (32%)
3	NDP	A	610	-	45,52,52	1.65	11 (24%)	53,80,80	1.57	11 (20%)
2	CP6	A	609	-	17,18,18	3.05	10 (58%)	21,25,25	2.77	6 (28%)
2	CP6	B	609	-	17,18,18	2.57	8 (47%)	21,25,25	2.75	8 (38%)
3	NDP	B	610	-	45,52,52	1.69	9 (20%)	53,80,80	1.62	13 (24%)

In the following table, the Chirals column lists the number of chiral outliers, the number of chiral

centers analysed, the number of these observed in the model and the number defined in the Chemical Component Dictionary. Similar counts are reported in the Torsion and Rings columns. '-' means no outliers of that kind were identified.

Mol	Type	Chain	Res	Link	Chirals	Torsions	Rings
4	UMP	A	611	-	-	1/10/22/22	0/2/2/2
4	UMP	B	611	-	-	1/10/22/22	0/2/2/2
3	NDP	A	610	-	-	5/30/77/77	0/5/5/5
2	CP6	A	609	-	-	0/2/6/6	0/2/2/2
2	CP6	B	609	-	-	0/2/6/6	0/2/2/2
3	NDP	B	610	-	-	5/30/77/77	0/5/5/5

All (48) bond length outliers are listed below:

Mol	Chain	Res	Type	Atoms	Z	Observed(Å)	Ideal(Å)
2	A	609	CP6	C5-N6	7.03	1.40	1.32
2	B	609	CP6	C5-C4	4.83	1.50	1.43
2	A	609	CP6	C5-C4	4.54	1.49	1.43
4	B	611	UMP	O4'-C1'	4.43	1.52	1.42
3	A	610	NDP	C4N-C3N	-4.37	1.41	1.49
3	B	610	NDP	C4N-C3N	-4.15	1.41	1.49
3	B	610	NDP	C4N-C5N	-4.09	1.38	1.48
2	B	609	CP6	C2-N14	3.98	1.41	1.33
4	A	611	UMP	O4'-C1'	3.88	1.51	1.42
2	B	609	CP6	C9-C10	3.86	1.45	1.38
3	B	610	NDP	C2N-C3N	3.82	1.45	1.34
2	A	609	CP6	C2-N14	3.71	1.41	1.33
3	A	610	NDP	C4N-C5N	-3.70	1.39	1.48
3	A	610	NDP	C2N-C3N	3.68	1.45	1.34
2	A	609	CP6	C10-CL1	-3.45	1.67	1.74
2	A	609	CP6	C12-C11	3.42	1.43	1.36
3	B	610	NDP	C6N-C5N	3.37	1.39	1.33
2	B	609	CP6	C2-N6	3.21	1.41	1.35
4	B	611	UMP	C2-N1	3.19	1.43	1.38
2	B	609	CP6	C5-N6	3.17	1.36	1.32
2	A	609	CP6	C2-N1	3.17	1.41	1.35
2	A	609	CP6	C11-C10	3.11	1.43	1.38
3	B	610	NDP	C4A-N3A	3.08	1.39	1.35
2	A	609	CP6	C2-N6	3.07	1.40	1.35
2	A	609	CP6	C15-C5	3.01	1.56	1.51
2	B	609	CP6	C10-CL1	-2.95	1.68	1.74
3	A	610	NDP	C6N-C5N	2.93	1.38	1.33
2	B	609	CP6	C3-N1	2.84	1.39	1.33
2	B	609	CP6	C12-C11	2.82	1.42	1.36

*Continued on next page...*

Continued from previous page...

Mol	Chain	Res	Type	Atoms	Z	Observed(Å)	Ideal(Å)
3	A	610	NDP	C3B-C2B	-2.72	1.46	1.52
4	B	611	UMP	C4-N3	2.46	1.43	1.38
4	A	611	UMP	C6-C5	2.44	1.40	1.35
3	B	610	NDP	C3B-C2B	-2.40	1.47	1.52
3	A	610	NDP	PA-O1A	-2.40	1.42	1.50
4	B	611	UMP	C6-C5	2.36	1.40	1.35
4	A	611	UMP	C2-N1	2.35	1.42	1.38
4	B	611	UMP	O4'-C4'	2.33	1.50	1.45
3	B	610	NDP	O4B-C1B	2.27	1.44	1.41
4	B	611	UMP	P-OP3	-2.24	1.46	1.54
4	A	611	UMP	P-OP3	-2.17	1.46	1.54
3	B	610	NDP	C6N-N1N	2.15	1.42	1.37
3	A	610	NDP	C4A-N3A	2.14	1.38	1.35
3	A	610	NDP	C3B-C4B	-2.09	1.47	1.53
3	A	610	NDP	C5D-C4D	2.07	1.58	1.51
2	A	609	CP6	C8-C9	2.04	1.40	1.36
3	A	610	NDP	C6N-N1N	2.04	1.42	1.37
3	A	610	NDP	P2B-O2B	-2.03	1.55	1.59
3	B	610	NDP	PA-O1A	-2.00	1.43	1.50

All (57) bond angle outliers are listed below:

Mol	Chain	Res	Type	Atoms	Z	Observed(°)	Ideal(°)
2	B	609	CP6	C5-C4-C3	-10.21	114.20	123.34
2	A	609	CP6	C5-C4-C3	-10.04	114.36	123.34
4	A	611	UMP	O4'-C1'-N1	4.41	115.75	107.86
4	B	611	UMP	O4'-C1'-N1	4.30	115.55	107.86
3	A	610	NDP	C1D-N1N-C2N	-4.29	113.97	121.11
3	A	610	NDP	C3N-C2N-N1N	-4.23	117.06	123.10
3	A	610	NDP	C3B-C2B-C1B	-4.22	94.95	102.89
3	B	610	NDP	C3N-C2N-N1N	-4.21	117.09	123.10
4	B	611	UMP	C1'-N1-C6	-4.18	113.29	121.55
3	B	610	NDP	C1D-N1N-C2N	-4.05	114.36	121.11
4	A	611	UMP	C1'-N1-C6	-4.01	113.64	121.55
2	A	609	CP6	C4-C3-N13	-3.70	115.99	122.67
3	B	610	NDP	O3B-C3B-C4B	3.22	120.37	111.05
4	B	611	UMP	C2'-C1'-N1	3.20	121.13	113.77
4	B	611	UMP	C1'-N1-C2	3.11	123.78	117.64
3	B	610	NDP	C3B-C2B-C1B	-3.11	97.05	102.89
4	B	611	UMP	O4'-C1'-C2'	-3.04	100.51	106.25
4	A	611	UMP	C2'-C1'-N1	2.96	120.60	113.77
2	B	609	CP6	C11-C10-CL1	2.94	123.94	119.35

Continued on next page...

Continued from previous page...

Mol	Chain	Res	Type	Atoms	Z	Observed(°)	Ideal(°)
2	A	609	CP6	C2-N6-C5	2.90	118.66	116.24
2	A	609	CP6	C9-C10-CL1	-2.84	114.91	119.35
4	B	611	UMP	C4'-O4'-C1'	2.83	116.30	109.45
3	B	610	NDP	O7N-C7N-N7N	-2.81	116.32	122.88
4	A	611	UMP	O4'-C1'-C2'	-2.79	100.99	106.25
3	A	610	NDP	O7N-C7N-N7N	-2.79	116.37	122.88
4	B	611	UMP	O4'-C4'-C3'	-2.75	99.25	105.67
2	B	609	CP6	C4-C3-N13	-2.75	117.70	122.67
4	A	611	UMP	C4'-O4'-C1'	2.73	116.06	109.45
4	A	611	UMP	C1'-N1-C2	2.72	123.00	117.64
2	B	609	CP6	C9-C10-CL1	-2.56	115.35	119.35
2	B	609	CP6	C16-C15-C5	2.53	121.07	114.88
2	B	609	CP6	C8-C7-C12	-2.53	116.40	118.65
4	B	611	UMP	C2'-C3'-C4'	2.52	108.00	102.76
3	B	610	NDP	O3B-C3B-C2B	2.50	118.27	111.17
3	B	610	NDP	C3D-C2D-C1D	-2.49	96.70	101.43
3	A	610	NDP	O3B-C3B-C2B	2.45	118.14	111.17
4	A	611	UMP	O4'-C4'-C3'	-2.41	100.04	105.67
2	B	609	CP6	C2-N6-C5	2.39	118.23	116.24
3	B	610	NDP	C2B-C3B-C4B	2.39	107.18	101.99
4	A	611	UMP	C2'-C3'-C4'	2.37	107.70	102.76
2	B	609	CP6	C15-C5-C4	-2.37	117.85	121.20
2	A	609	CP6	C11-C10-CL1	2.36	123.04	119.35
2	A	609	CP6	C16-C15-C5	2.36	120.64	114.88
3	A	610	NDP	C3D-C2D-C1D	-2.33	96.99	101.43
3	A	610	NDP	O2A-PA-O1A	2.28	123.52	112.24
4	B	611	UMP	O4-C4-N3	2.27	122.64	119.31
3	B	610	NDP	N3A-C2A-N1A	-2.26	125.14	128.68
4	B	611	UMP	O2-C2-N1	2.23	125.75	122.79
3	B	610	NDP	C2D-C3D-C4D	2.16	106.84	102.64
3	A	610	NDP	O3B-C3B-C4B	2.16	117.29	111.05
3	B	610	NDP	O2B-C2B-C3B	2.11	119.33	111.68
3	A	610	NDP	N3A-C2A-N1A	-2.11	125.38	128.68
3	A	610	NDP	C2D-C3D-C4D	2.11	106.73	102.64
4	A	611	UMP	O4-C4-N3	2.09	122.37	119.31
3	B	610	NDP	O2A-PA-O1A	2.06	122.44	112.24
3	B	610	NDP	O4B-C1B-C2B	2.05	110.15	106.59
3	A	610	NDP	O5B-C5B-C4B	-2.02	102.04	108.99

There are no chirality outliers.

All (12) torsion outliers are listed below:

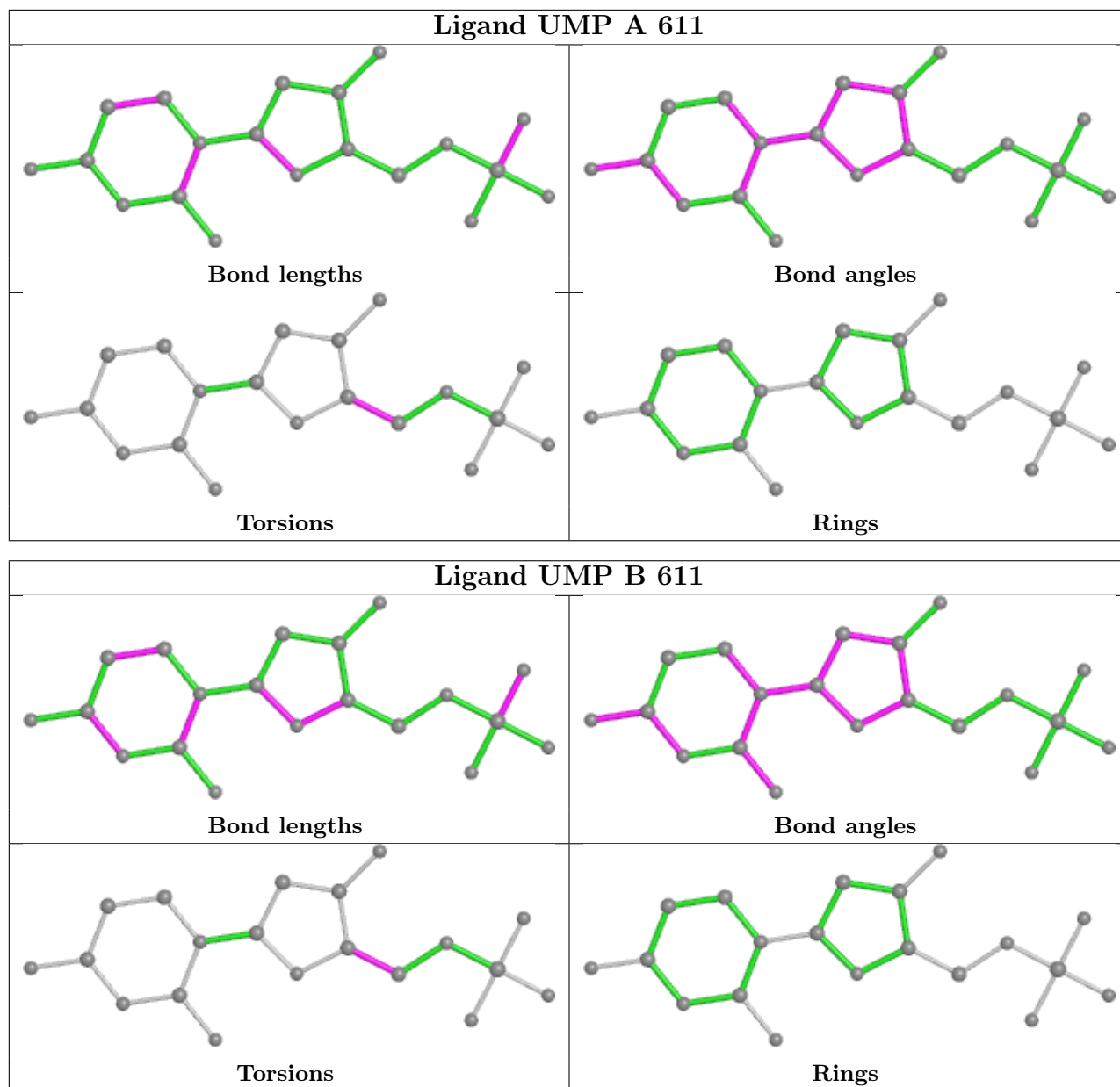
Mol	Chain	Res	Type	Atoms
3	B	610	NDP	PA-O3-PN-O5D
3	B	610	NDP	C3B-C4B-C5B-O5B
3	B	610	NDP	O4B-C4B-C5B-O5B
3	A	610	NDP	PA-O3-PN-O5D
3	B	610	NDP	O4D-C1D-N1N-C2N
3	A	610	NDP	O4D-C1D-N1N-C2N
3	A	610	NDP	C4D-C5D-O5D-PN
4	A	611	UMP	O4'-C4'-C5'-O5'
4	B	611	UMP	O4'-C4'-C5'-O5'
3	A	610	NDP	C2N-C3N-C7N-N7N
3	B	610	NDP	C2N-C3N-C7N-N7N
3	A	610	NDP	C2D-C1D-N1N-C2N

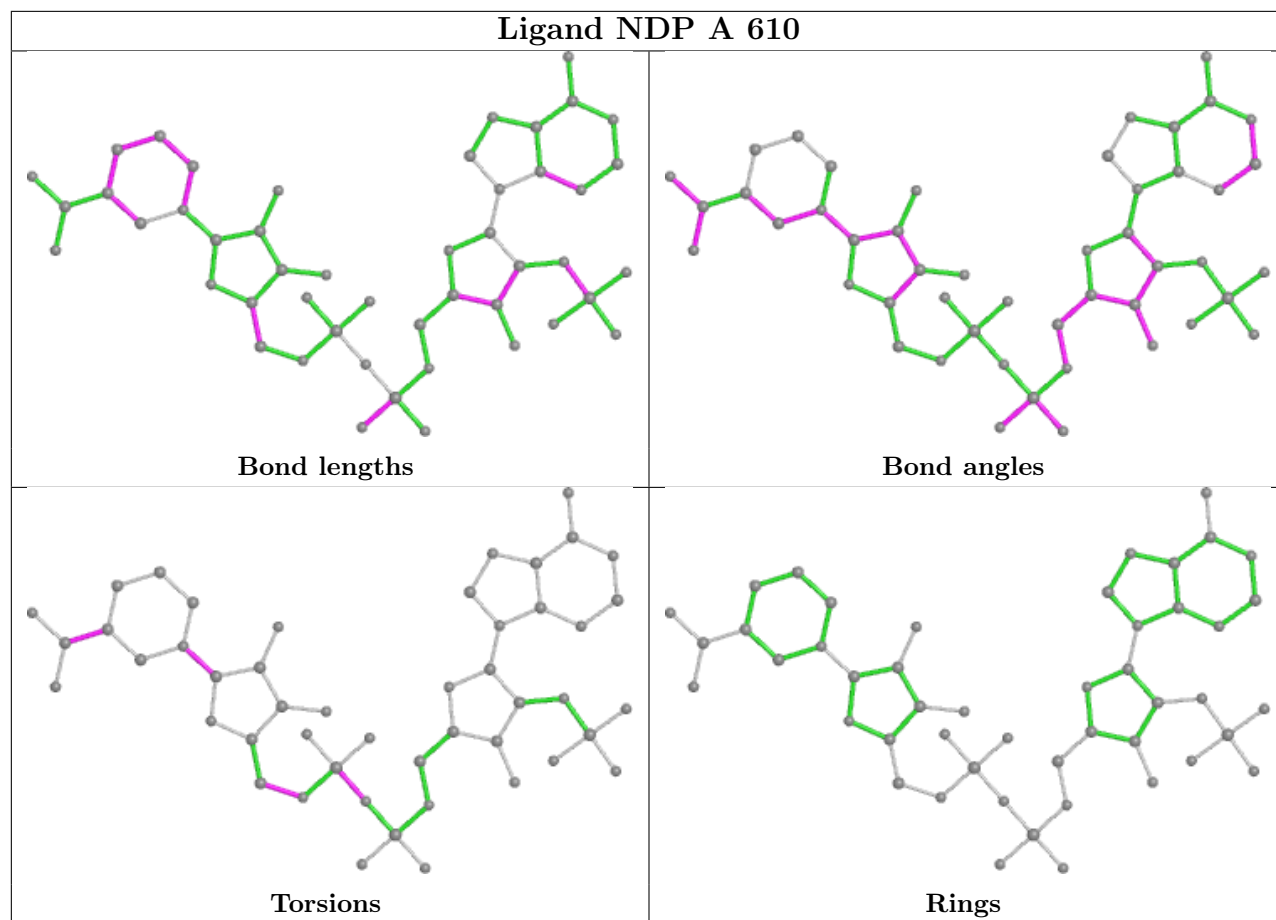
There are no ring outliers.

4 monomers are involved in 15 short contacts:

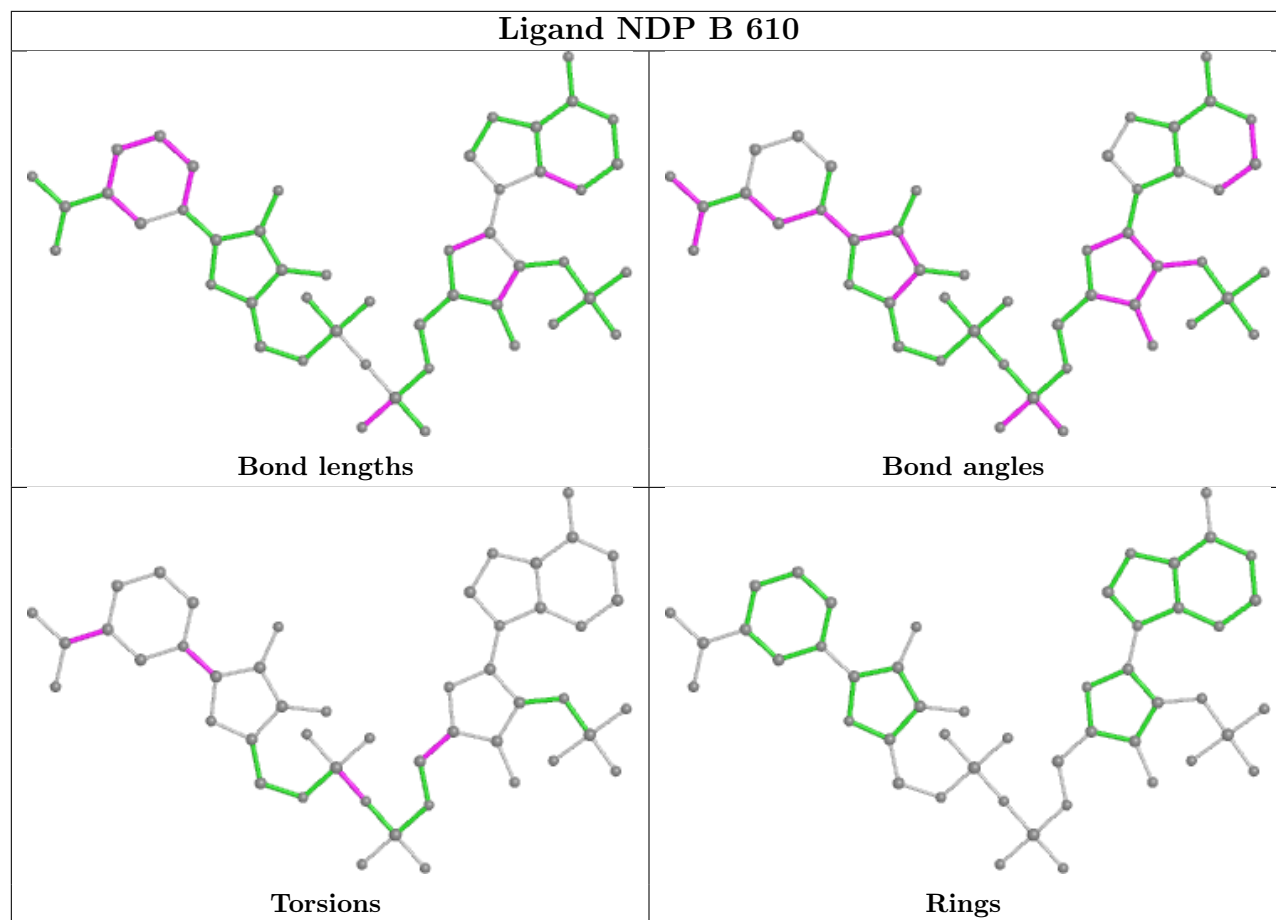
Mol	Chain	Res	Type	Clashes	Symm-Clashes
3	A	610	NDP	9	0
2	A	609	CP6	3	0
2	B	609	CP6	1	0
3	B	610	NDP	2	0

The following is a two-dimensional graphical depiction of Mogul quality analysis of bond lengths, bond angles, torsion angles, and ring geometry for all instances of the Ligand of Interest. In addition, ligands with molecular weight > 250 and outliers as shown on the validation Tables will also be included. For torsion angles, if less than 5% of the Mogul distribution of torsion angles is within 10 degrees of the torsion angle in question, then that torsion angle is considered an outlier. Any bond that is central to one or more torsion angles identified as an outlier by Mogul will be highlighted in the graph. For rings, the root-mean-square deviation (RMSD) between the ring in question and similar rings identified by Mogul is calculated over all ring torsion angles. If the average RMSD is greater than 60 degrees and the minimal RMSD between the ring in question and any Mogul-identified rings is also greater than 60 degrees, then that ring is considered an outlier. The outliers are highlighted in purple. The color gray indicates Mogul did not find sufficient equivalents in the CSD to analyse the geometry.









## 5.7 Other polymers [\(i\)](#)

There are no such residues in this entry.

## 5.8 Polymer linkage issues [\(i\)](#)

There are no chain breaks in this entry.

## 6 Fit of model and data

### 6.1 Protein, DNA and RNA chains

In the following table, the column labelled ‘#RSRZ > 2’ contains the number (and percentage) of RSRZ outliers, followed by percent RSRZ outliers for the chain as percentile scores relative to all X-ray entries and entries of similar resolution. The OWAB column contains the minimum, median, 95<sup>th</sup> percentile and maximum values of the occupancy-weighted average B-factor per residue. The column labelled ‘Q < 0.9’ lists the number of (and percentage) of residues with an average occupancy less than 0.9.

Mol	Chain	Analysed	<RSRZ>	#RSRZ>2	OWAB(Å <sup>2</sup> )	Q<0.9
1	A	547/608 (89%)	0.43	58 (10%) <b>6</b> <b>8</b>	17, 29, 81, 111	0
1	B	542/608 (89%)	1.12	127 (23%) <b>0</b> <b>1</b>	16, 35, 106, 120	0
All	All	1089/1216 (89%)	0.78	185 (16%) <b>1</b> <b>2</b>	16, 30, 100, 120	0

All (185) RSRZ outliers are listed below:

Mol	Chain	Res	Type	RSRZ
1	B	26	GLY	16.4
1	A	1	MET	13.4
1	B	2	MET	11.1
1	B	28	LYS	9.5
1	A	85	THR	9.3
1	B	70	TYR	9.2
1	A	24	ASN	8.9
1	A	25	GLU	8.7
1	B	27	LYS	8.4
1	B	9	PHE	8.4
1	B	3	GLU	8.1
1	B	75	TYR	8.0
1	B	608	ALA	8.0
1	B	345	ARG	7.9
1	B	74	LYS	7.7
1	B	24	ASN	7.7
1	A	29	ASN	7.5
1	B	136	PHE	7.3
1	B	22	SER	7.3
1	A	2	MET	7.3
1	B	137	ASP	7.2
1	B	179	ILE	7.1
1	B	135	ASP	7.1
1	B	230	ASN	7.1

*Continued on next page...*

*Continued from previous page...*

<b>Mol</b>	<b>Chain</b>	<b>Res</b>	<b>Type</b>	<b>RSRZ</b>
1	A	307	ILE	7.0
1	B	29	ASN	6.9
1	A	22	SER	6.9
1	A	230	ASN	6.9
1	A	345	ARG	6.9
1	A	27	LYS	6.8
1	B	231	ASN	6.5
1	B	131	LEU	6.5
1	A	26	GLY	6.4
1	B	151	VAL	6.2
1	B	159	TYR	6.2
1	A	305	ASN	6.2
1	B	98	LEU	6.0
1	B	25	GLU	5.9
1	A	344	ASP	5.8
1	B	73	LEU	5.5
1	B	138	GLU	5.5
1	B	4	GLN	5.4
1	A	231	ASN	5.3
1	B	23	LYS	5.2
1	B	97	LYS	5.0
1	B	80	TYR	5.0
1	A	299	LYS	5.0
1	B	157	ASN	4.9
1	B	77	ARG	4.9
1	B	78	CYS	4.8
1	B	65	VAL	4.8
1	B	69	LYS	4.8
1	B	130	THR	4.7
1	B	152	LEU	4.7
1	B	81	LEU	4.6
1	A	306	SER	4.5
1	B	67	GLU	4.5
1	A	23	LYS	4.5
1	B	1	MET	4.4
1	A	287	GLU	4.2
1	A	310	ASN	4.2
1	A	285	GLU	4.2
1	B	144	ASN	4.2
1	B	11	ILE	4.2
1	B	158	TYR	4.1
1	A	284	ASP	4.1

*Continued on next page...*

*Continued from previous page...*

<b>Mol</b>	<b>Chain</b>	<b>Res</b>	<b>Type</b>	<b>RSRZ</b>
1	A	3	GLU	4.1
1	A	298	GLU	4.0
1	A	348	VAL	4.0
1	B	68	SER	4.0
1	B	66	ASN	4.0
1	B	139	ASP	3.9
1	B	134	GLU	3.9
1	B	72	LYS	3.8
1	B	310	ASN	3.8
1	B	299	LYS	3.8
1	B	116	PHE	3.8
1	B	305	ASN	3.7
1	A	343	SER	3.7
1	A	84	GLU	3.6
1	B	228	LYS	3.6
1	A	31	VAL	3.6
1	B	203	ASN	3.5
1	A	35	TYR	3.5
1	B	5	VAL	3.5
1	B	62	THR	3.5
1	B	283	ASP	3.4
1	A	28	LYS	3.4
1	B	313	GLN	3.4
1	B	35	TYR	3.4
1	B	8	VAL	3.3
1	B	346	THR	3.3
1	B	141	TYR	3.3
1	B	164	ILE	3.3
1	B	307	ILE	3.2
1	B	58	PHE	3.2
1	B	311	ASP	3.2
1	B	205	TYR	3.2
1	B	178	LEU	3.2
1	B	312	PHE	3.1
1	A	300	GLU	3.1
1	B	344	ASP	3.1
1	A	30	GLU	3.1
1	A	34	ASN	3.1
1	B	6	CYS	3.1
1	B	285	GLU	3.1
1	B	284	ASP	3.0
1	B	165	GLY	3.0

*Continued on next page...*

*Continued from previous page...*

<b>Mol</b>	<b>Chain</b>	<b>Res</b>	<b>Type</b>	<b>RSRZ</b>
1	B	64	TYR	2.9
1	B	13	ALA	2.9
1	A	346	THR	2.8
1	A	546	VAL	2.8
1	B	129	ARG	2.8
1	B	115	LYS	2.7
1	A	308	HIS	2.7
1	A	301	GLU	2.7
1	B	71	GLU	2.7
1	A	304	LYS	2.7
1	B	206	GLN	2.7
1	A	286	GLU	2.6
1	B	176	LYS	2.6
1	A	75	TYR	2.6
1	B	21	GLU	2.6
1	B	140	VAL	2.6
1	B	155	LYS	2.6
1	B	146	VAL	2.6
1	B	190	THR	2.5
1	B	286	GLU	2.5
1	B	106	ARG	2.5
1	B	143	ILE	2.5
1	A	79	LYS	2.5
1	B	173	PHE	2.5
1	B	200	ILE	2.5
1	B	100	ASN	2.5
1	B	607	ALA	2.5
1	A	71	GLU	2.5
1	A	309	PRO	2.4
1	A	506	ILE	2.4
1	B	300	GLU	2.4
1	B	156	LEU	2.4
1	B	99	GLN	2.4
1	B	306	SER	2.4
1	B	149	LEU	2.4
1	A	83	LYS	2.3
1	A	544	ILE	2.3
1	A	70	TYR	2.3
1	B	125	VAL	2.3
1	A	96	LYS	2.3
1	A	292	TYR	2.3
1	B	63	THR	2.3

*Continued on next page...*

*Continued from previous page...*

Mol	Chain	Res	Type	RSRZ
1	B	153	LEU	2.3
1	A	358	MET	2.3
1	B	154	GLY	2.3
1	B	20	VAL	2.3
1	B	309	PRO	2.3
1	B	43	LYS	2.2
1	A	507	MET	2.2
1	B	107	THR	2.2
1	B	229	THR	2.2
1	B	192	GLU	2.2
1	A	493	LEU	2.2
1	A	114	LYS	2.2
1	B	132	LYS	2.2
1	B	161	CYS	2.2
1	A	206	GLN	2.2
1	B	546	VAL	2.1
1	B	163	ILE	2.1
1	B	36	THR	2.1
1	A	283	ASP	2.1
1	B	507	MET	2.1
1	B	12	TYR	2.1
1	B	79	LYS	2.1
1	B	493	LEU	2.1
1	A	288	ASP	2.1
1	B	357	ILE	2.1
1	B	308	HIS	2.1
1	B	172	GLU	2.1
1	B	103	VAL	2.1
1	B	76	LYS	2.1
1	B	505	CYS	2.1
1	B	227	LYS	2.0
1	A	447	ASN	2.0
1	B	605	ASP	2.0
1	B	506	ILE	2.0
1	A	33	ASN	2.0

## 6.2 Non-standard residues in protein, DNA, RNA chains

There are no non-standard protein/DNA/RNA residues in this entry.

### 6.3 Carbohydrates [i](#)

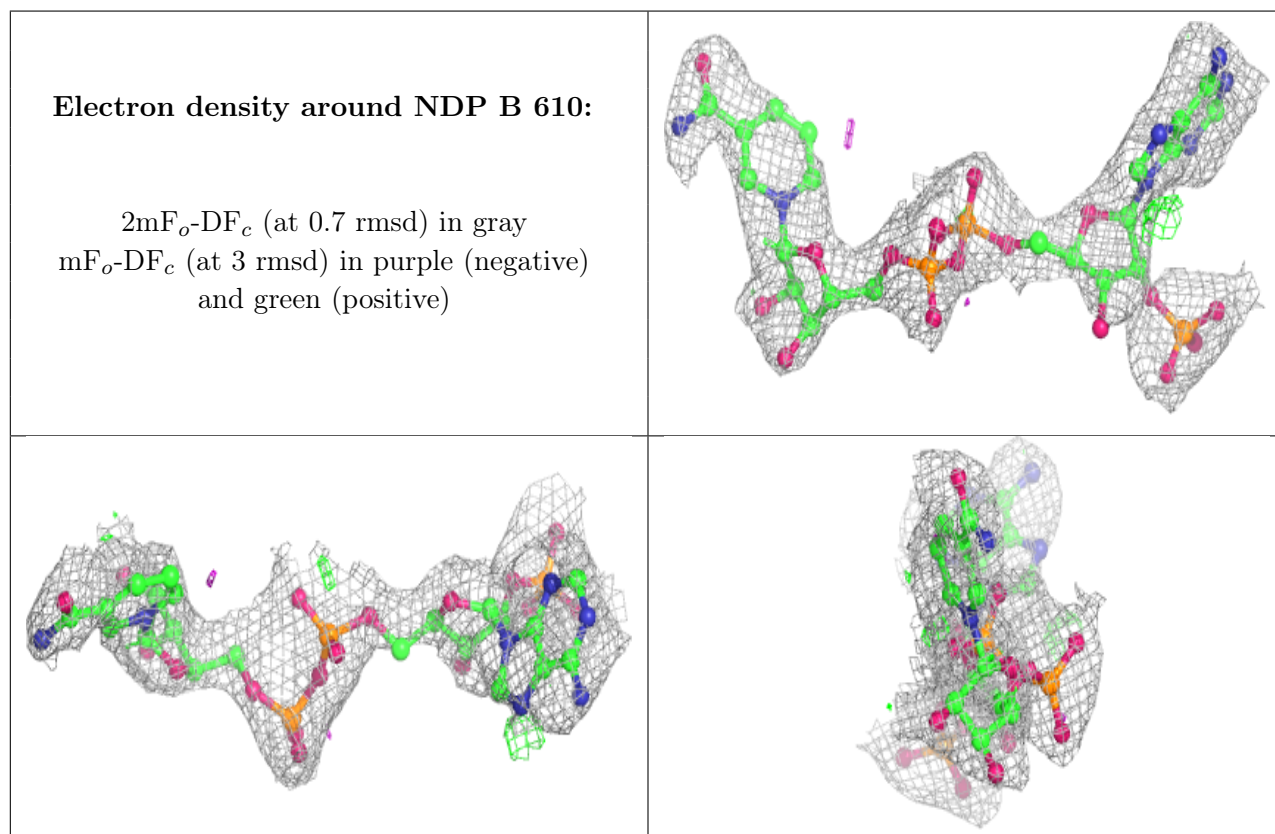
There are no monosaccharides in this entry.

### 6.4 Ligands [i](#)

In the following table, the Atoms column lists the number of modelled atoms in the group and the number defined in the chemical component dictionary. The B-factors column lists the minimum, median, 95<sup>th</sup> percentile and maximum values of B factors of atoms in the group. The column labelled 'Q< 0.9' lists the number of atoms with occupancy less than 0.9.

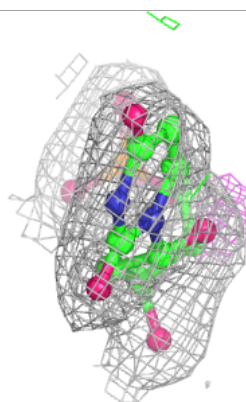
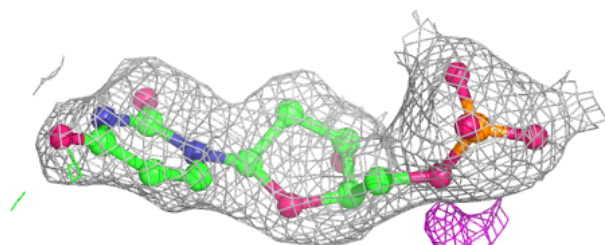
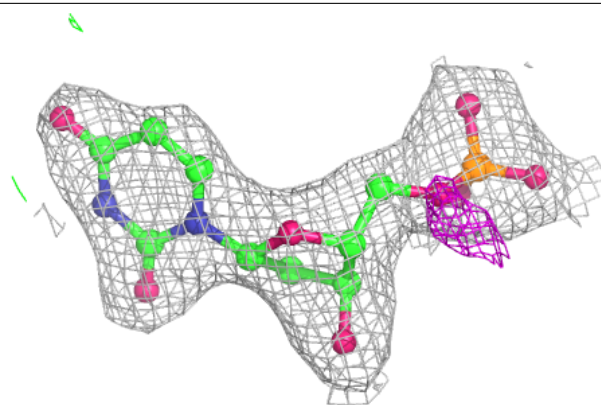
Mol	Type	Chain	Res	Atoms	RSCC	RSR	B-factors(Å <sup>2</sup> )	Q<0.9
3	NDP	B	610	48/48	0.82	0.19	73,86,97,98	0
2	CP6	B	609	17/17	0.86	0.19	71,73,74,74	0
2	CP6	A	609	17/17	0.94	0.16	13,22,27,30	0
4	UMP	A	611	20/20	0.96	0.14	30,35,38,39	0
3	NDP	A	610	48/48	0.97	0.12	22,29,36,40	0
4	UMP	B	611	20/20	0.97	0.13	29,36,39,39	0

The following is a graphical depiction of the model fit to experimental electron density of all instances of the Ligand of Interest. In addition, ligands with molecular weight > 250 and outliers as shown on the geometry validation Tables will also be included. Each fit is shown from different orientation to approximate a three-dimensional view.

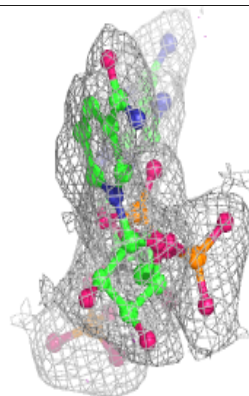
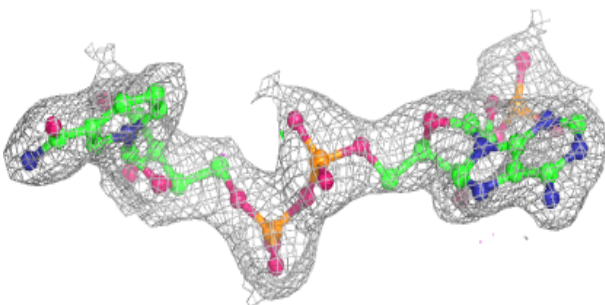
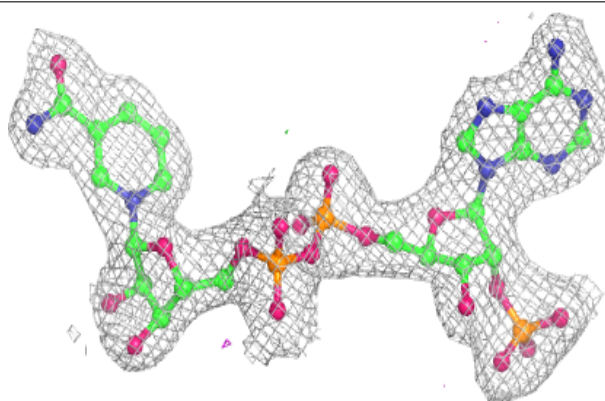


**Electron density around UMP A 611:**

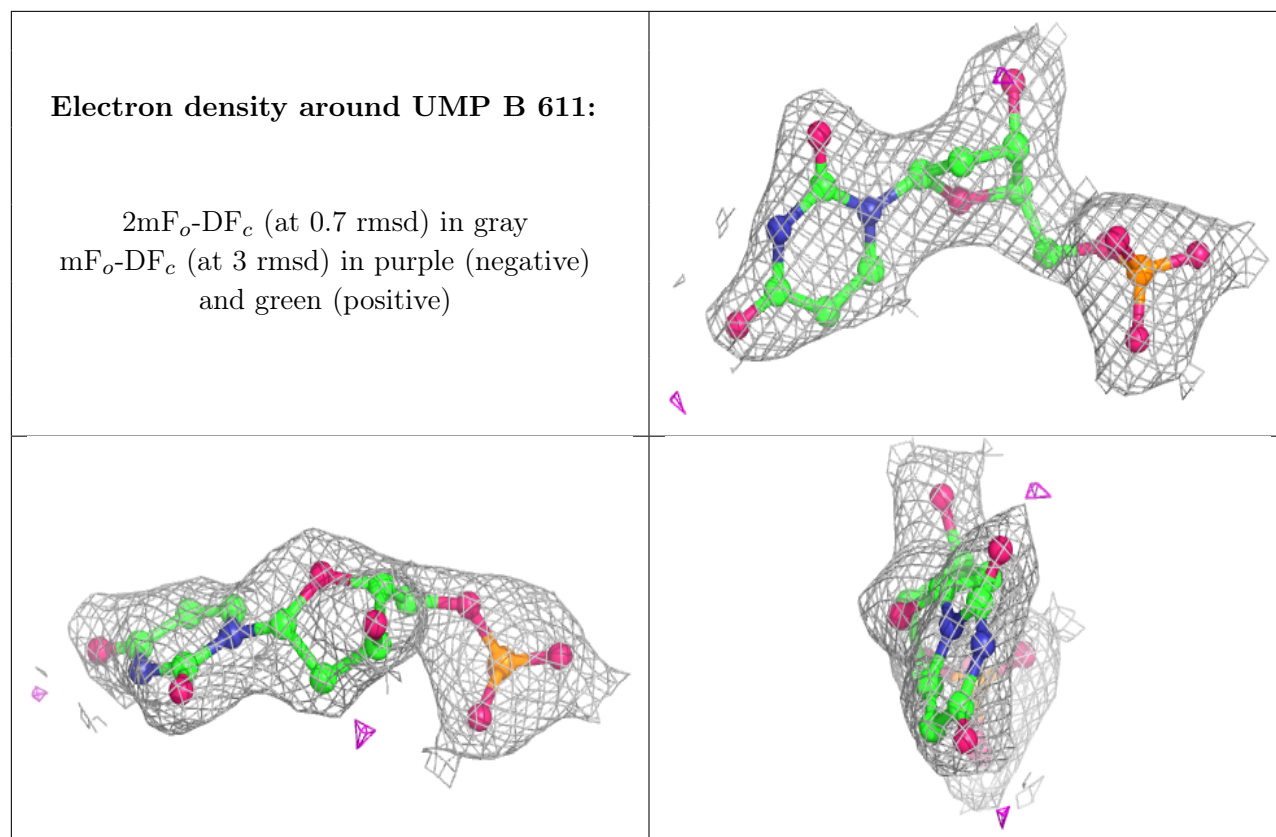
$2mF_o-DF_c$  (at 0.7 rmsd) in gray  
 $mF_o-DF_c$  (at 3 rmsd) in purple (negative)  
and green (positive)

**Electron density around NDP A 610:**

$2mF_o-DF_c$  (at 0.7 rmsd) in gray  
 $mF_o-DF_c$  (at 3 rmsd) in purple (negative)  
and green (positive)







## 6.5 Other polymers [i](#)

There are no such residues in this entry.