



# Full wwPDB X-ray Structure Validation Report ⓘ

May 29, 2020 – 09:59 pm BST

PDB ID : 3PQB  
Title : The crystal structure of pregilvocarcin in complex with GilR, an oxidoreductase that catalyzes the terminal step of gilvocarcin biosynthesis  
Authors : Noinaj, N.; Bosserman, M.A.; Schickli, M.A.; Kharel, M.K.; Rohr, J.; Buchanan, S.K.  
Deposited on : 2010-11-25  
Resolution : 2.32 Å(reported)

This is a Full wwPDB X-ray Structure Validation Report for a publicly released PDB entry.

We welcome your comments at [validation@mail.wwpdb.org](mailto:validation@mail.wwpdb.org)

A user guide is available at

<https://www.wwpdb.org/validation/2017/XrayValidationReportHelp>

with specific help available everywhere you see the ⓘ symbol.

---

The following versions of software and data (see [references ⓘ](#)) were used in the production of this report:

MolProbity : 4.02b-467  
Mogul : 1.8.5 (274361), CSD as541be (2020)  
Xtriage (Phenix) : 1.13  
EDS : 2.11  
buster-report : 1.1.7 (2018)  
Percentile statistics : 20191225.v01 (using entries in the PDB archive December 25th 2019)  
Refmac : 5.8.0158  
CCP4 : 7.0.044 (Gargrove)  
Ideal geometry (proteins) : Engh & Huber (2001)  
Ideal geometry (DNA, RNA) : Parkinson et al. (1996)  
Validation Pipeline (wwPDB-VP) : 2.11

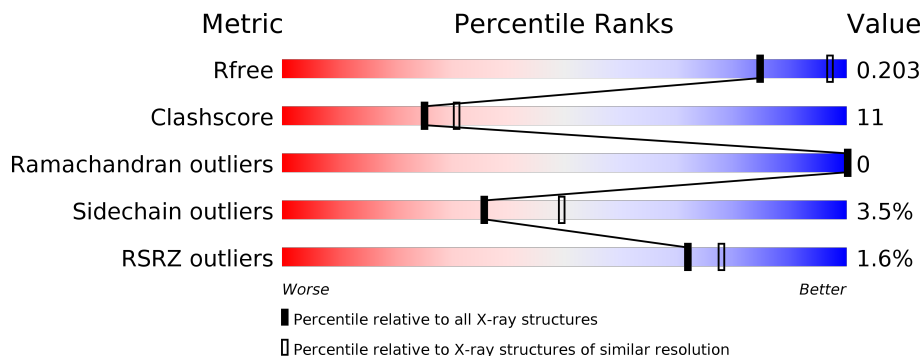
# 1 Overall quality at a glance

The following experimental techniques were used to determine the structure:

*X-RAY DIFFRACTION*

The reported resolution of this entry is 2.32 Å.

Percentile scores (ranging between 0-100) for global validation metrics of the entry are shown in the following graphic. The table shows the number of entries on which the scores are based.



Metric	Whole archive (#Entries)	Similar resolution (#Entries, resolution range(Å))
$R_{free}$	130704	5974 (2.34-2.30)
Clashscore	141614	6604 (2.34-2.30)
Ramachandran outliers	138981	6523 (2.34-2.30)
Sidechain outliers	138945	6523 (2.34-2.30)
RSRZ outliers	127900	5855 (2.34-2.30)

The table below summarises the geometric issues observed across the polymeric chains and their fit to the electron density. The red, orange, yellow and green segments on the lower bar indicate the fraction of residues that contain outliers for  $\geq 3$ , 2, 1 and 0 types of geometric quality criteria respectively. A grey segment represents the fraction of residues that are not modelled. The numeric value for each fraction is indicated below the corresponding segment, with a dot representing fractions  $\leq 5\%$ . The upper red bar (where present) indicates the fraction of residues that have poor fit to the electron density. The numeric value is given above the bar.

Mol	Chain	Length	Quality of chain
1	A	501	 81% 16%
1	B	501	 84% 12%
1	C	501	 84% 13%
1	D	501	 83% 14%

## 2 Entry composition [i](#)

There are 4 unique types of molecules in this entry. The entry contains 15822 atoms, of which 0 are hydrogens and 0 are deuteriums.

In the tables below, the ZeroOcc column contains the number of atoms modelled with zero occupancy, the AltConf column contains the number of residues with at least one atom in alternate conformation and the Trace column contains the number of residues modelled with at most 2 atoms.

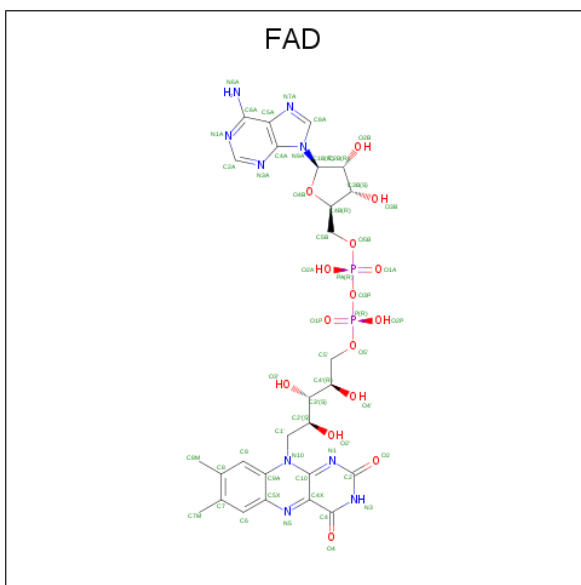
- Molecule 1 is a protein called Putative oxidoreductase.

Mol	Chain	Residues	Atoms					ZeroOcc	AltConf	Trace
			Total	C	N	O	S			
1	A	492	3739	2350	685	690	14	0	0	0
1	B	493	3722	2344	682	682	14	0	0	0
1	C	493	3730	2348	681	687	14	0	0	0
1	D	491	3723	2340	683	686	14	0	0	0

There are 12 discrepancies between the modelled and reference sequences:

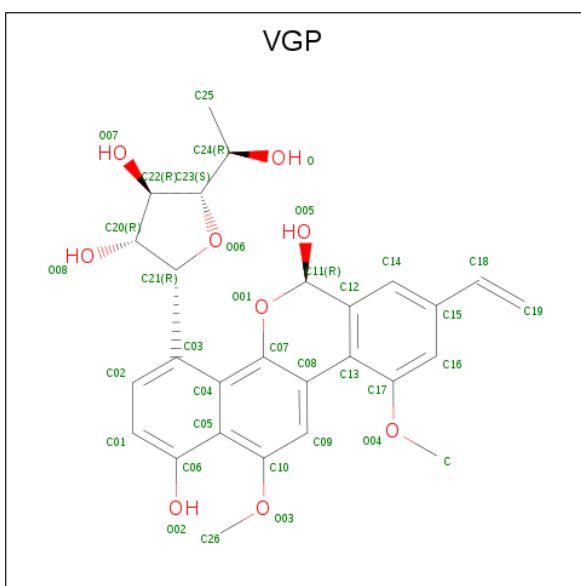
Chain	Residue	Modelled	Actual	Comment	Reference
A	-2	GLY	-	EXPRESSION TAG	UNP Q7X2G7
A	-1	SER	-	EXPRESSION TAG	UNP Q7X2G7
A	0	HIS	-	EXPRESSION TAG	UNP Q7X2G7
B	-2	GLY	-	EXPRESSION TAG	UNP Q7X2G7
B	-1	SER	-	EXPRESSION TAG	UNP Q7X2G7
B	0	HIS	-	EXPRESSION TAG	UNP Q7X2G7
C	-2	GLY	-	EXPRESSION TAG	UNP Q7X2G7
C	-1	SER	-	EXPRESSION TAG	UNP Q7X2G7
C	0	HIS	-	EXPRESSION TAG	UNP Q7X2G7
D	-2	GLY	-	EXPRESSION TAG	UNP Q7X2G7
D	-1	SER	-	EXPRESSION TAG	UNP Q7X2G7
D	0	HIS	-	EXPRESSION TAG	UNP Q7X2G7

- Molecule 2 is FLAVIN-ADENINE DINUCLEOTIDE (three-letter code: FAD) (formula:  $C_{27}H_{33}N_9O_{15}P_2$ ).



Mol	Chain	Residues	Atoms				ZeroOcc	AltConf		
			Total	C	N	O			P	
2	A	1	Total	53	27	9	15	2	0	0
2	B	1	Total	53	27	9	15	2	0	0
2	C	1	Total	53	27	9	15	2	0	0
2	D	1	Total	53	27	9	15	2	0	0

- Molecule 3 is (1R)-1,4-anhydro-6-deoxy-1-[(6R)-8-ethenyl-1,6-dihydroxy-10,12-dimethoxy-6 H-dibenzo[c,h]chromen-4-yl]-D-galactitol (three-letter code: VGP) (formula: C<sub>27</sub>H<sub>28</sub>O<sub>9</sub>).



Mol	Chain	Residues	Atoms			ZeroOcc	AltConf
3	A	1	Total	C	O	0	0
			36	27	9		
3	B	1	Total	C	O	0	0
			36	27	9		
3	C	1	Total	C	O	0	0
			36	27	9		
3	D	1	Total	C	O	0	0
			36	27	9		

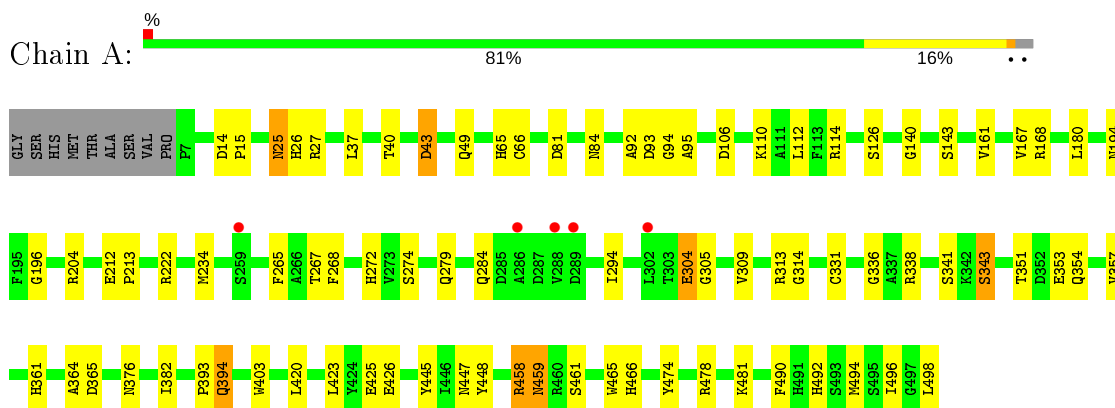
- Molecule 4 is water.

Mol	Chain	Residues	Atoms		ZeroOcc	AltConf
4	A	128	Total	O	0	0
			128	128		
4	B	164	Total	O	0	0
			164	164		
4	C	145	Total	O	0	0
			145	145		
4	D	115	Total	O	0	0
			115	115		

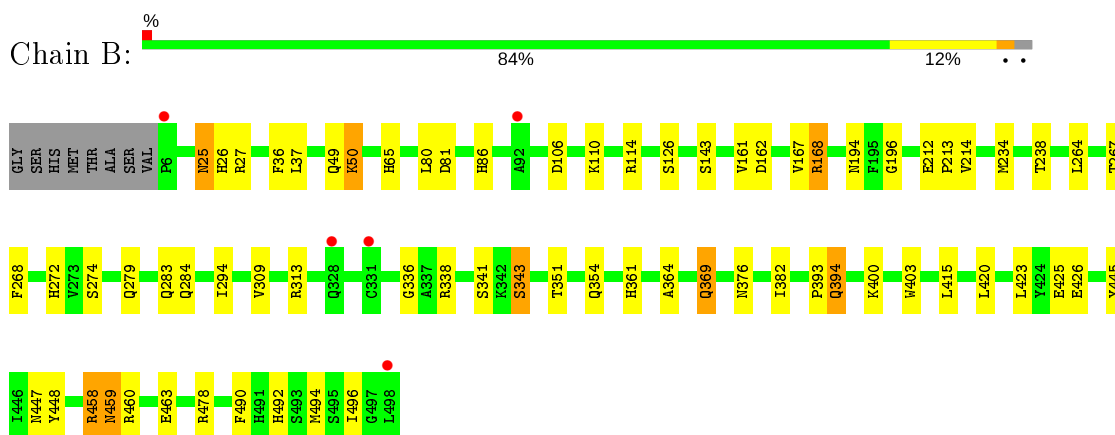
### 3 Residue-property plots [i](#)

These plots are drawn for all protein, RNA and DNA chains in the entry. The first graphic for a chain summarises the proportions of the various outlier classes displayed in the second graphic. The second graphic shows the sequence view annotated by issues in geometry and electron density. Residues are color-coded according to the number of geometric quality criteria for which they contain at least one outlier: green = 0, yellow = 1, orange = 2 and red = 3 or more. A red dot above a residue indicates a poor fit to the electron density ( $RSRZ > 2$ ). Stretches of 2 or more consecutive residues without any outlier are shown as a green connector. Residues present in the sample, but not in the model, are shown in grey.

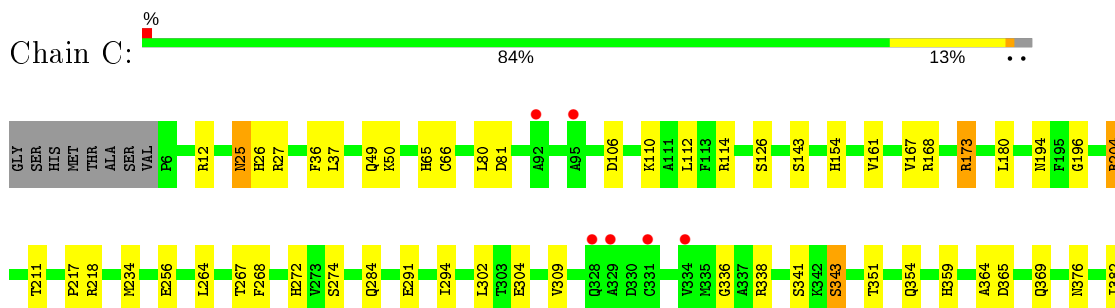
- Molecule 1: Putative oxidoreductase

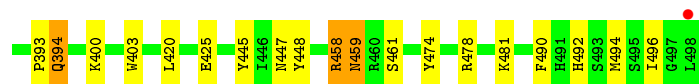


- Molecule 1: Putative oxidoreductase

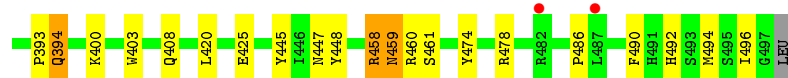
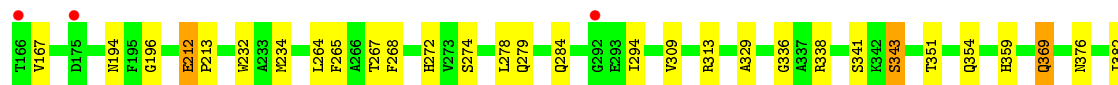
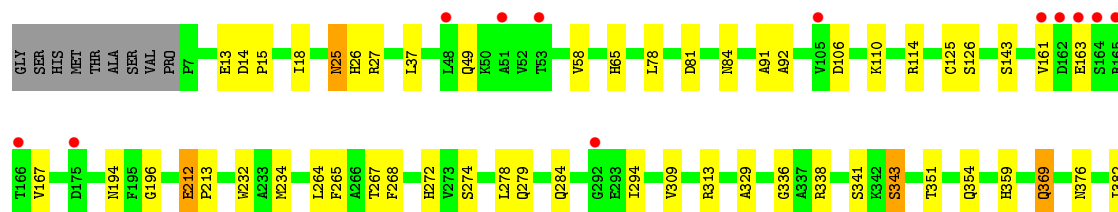
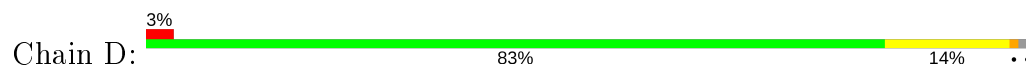


- Molecule 1: Putative oxidoreductase





● Molecule 1: Putative oxidoreductase



## 4 Data and refinement statistics

Property	Value	Source
Space group	P 21 21 21	Depositor
Cell constants a, b, c, $\alpha$ , $\beta$ , $\gamma$	68.00Å 115.97Å 291.40Å 90.00° 90.00° 90.00°	Depositor
Resolution (Å)	19.98 – 2.32 45.69 – 2.32	Depositor EDS
% Data completeness (in resolution range)	98.5 (19.98-2.32) 98.5 (45.69-2.32)	Depositor EDS
$R_{merge}$	(Not available)	Depositor
$R_{sym}$	(Not available)	Depositor
$\langle I/\sigma(I) \rangle$ <sup>1</sup>	2.35 (at 2.32Å)	Xtrriage
Refinement program	PHENIX (phenix.refine: dev_501)	Depositor
R, $R_{free}$	0.172 , 0.205 0.174 , 0.203	Depositor DCC
$R_{free}$ test set	4931 reflections (5.00%)	wwPDB-VP
Wilson B-factor (Å <sup>2</sup> )	33.4	Xtrriage
Anisotropy	0.065	Xtrriage
Bulk solvent $k_{sol}$ (e/Å <sup>3</sup> ), $B_{sol}$ (Å <sup>2</sup> )	0.31 , 39.3	EDS
L-test for twinning <sup>2</sup>	$\langle  L  \rangle = 0.47$ , $\langle L^2 \rangle = 0.29$	Xtrriage
Estimated twinning fraction	No twinning to report.	Xtrriage
$F_o, F_c$ correlation	0.96	EDS
Total number of atoms	15822	wwPDB-VP
Average B, all atoms (Å <sup>2</sup> )	38.0	wwPDB-VP

Xtrriage's analysis on translational NCS is as follows: *The largest off-origin peak in the Patterson function is 5.07% of the height of the origin peak. No significant pseudotranslation is detected.*

<sup>1</sup>Intensities estimated from amplitudes.

<sup>2</sup>Theoretical values of  $\langle |L| \rangle$ ,  $\langle L^2 \rangle$  for acentric reflections are 0.5, 0.333 respectively for untwinned datasets, and 0.375, 0.2 for perfectly twinned datasets.



## 5 Model quality [i](#)

### 5.1 Standard geometry [i](#)

Bond lengths and bond angles in the following residue types are not validated in this section: VGP, FAD

The Z score for a bond length (or angle) is the number of standard deviations the observed value is removed from the expected value. A bond length (or angle) with  $|Z| > 5$  is considered an outlier worth inspection. RMSZ is the root-mean-square of all Z scores of the bond lengths (or angles).

Mol	Chain	Bond lengths		Bond angles	
		RMSZ	# Z  >5	RMSZ	# Z  >5
1	A	0.63	0/3842	0.59	0/5228
1	B	0.68	1/3826 (0.0%)	0.61	0/5210
1	C	0.60	0/3834	0.58	0/5220
1	D	0.62	1/3826 (0.0%)	0.59	0/5209
All	All	0.63	2/15328 (0.0%)	0.59	0/20867

All (2) bond length outliers are listed below:

Mol	Chain	Res	Type	Atoms	Z	Observed(Å)	Ideal(Å)
1	B	463	GLU	CD-OE1	-5.64	1.19	1.25
1	D	125	CYS	CB-SG	-5.03	1.73	1.81

There are no bond angle outliers.

There are no chirality outliers.

There are no planarity outliers.

### 5.2 Too-close contacts [i](#)

In the following table, the Non-H and H(model) columns list the number of non-hydrogen atoms and hydrogen atoms in the chain respectively. The H(added) column lists the number of hydrogen atoms added and optimized by MolProbity. The Clashes column lists the number of clashes within the asymmetric unit, whereas Symm-Clashes lists symmetry related clashes.

Mol	Chain	Non-H	H(model)	H(added)	Clashes	Symm-Clashes
1	A	3739	0	3548	85	0
1	B	3722	0	3530	61	0
1	C	3730	0	3536	75	0
1	D	3723	0	3528	71	0
2	A	53	0	27	8	0

*Continued on next page...*

*Continued from previous page...*

Mol	Chain	Non-H	H(model)	H(added)	Clashes	Symm-Clashes
2	B	53	0	27	3	0
2	C	53	0	26	10	0
2	D	53	0	27	5	0
3	A	36	0	26	13	0
3	B	36	0	24	8	0
3	C	36	0	23	11	0
3	D	36	0	25	9	0
4	A	128	0	0	5	0
4	B	164	0	0	11	0
4	C	145	0	0	10	0
4	D	115	0	0	7	0
All	All	15822	0	14347	315	0

The all-atom clashscore is defined as the number of clashes found per 1000 atoms (including hydrogen atoms). The all-atom clashscore for this structure is 11.

All (315) close contacts within the same asymmetric unit are listed below, sorted by their clash magnitude.

Atom-1	Atom-2	Interatomic distance (Å)	Clash overlap (Å)
1:B:65:HIS:ND1	2:B:499:FAD:HM83	1.13	1.42
1:C:65:HIS:CE1	2:C:499:FAD:HM83	1.59	1.37
1:A:65:HIS:CE1	2:A:499:FAD:HM83	1.70	1.26
1:A:65:HIS:ND1	2:A:499:FAD:HM83	0.93	1.24
1:C:65:HIS:ND1	2:C:499:FAD:HM83	0.91	1.22
1:D:212:GLU:CG	1:D:213:PRO:HA	1.79	1.12
1:D:212:GLU:HG3	1:D:213:PRO:HA	1.17	1.11
1:A:304:GLU:HG3	1:A:305:GLY:N	1.57	1.07
1:D:369:GLN:HG3	4:D:620:HOH:O	1.55	1.04
3:B:500:VGP:H09	3:B:500:VGP:O04	1.58	1.03
1:B:65:HIS:CE1	2:B:499:FAD:HM83	1.97	0.98
1:A:93:ASP:CB	1:A:94:GLY:HA2	1.93	0.97
1:C:359:HIS:HD2	4:C:587:HOH:O	1.49	0.96
1:A:304:GLU:HG3	1:A:305:GLY:H	1.13	0.94
3:D:500:VGP:H25A	4:D:596:HOH:O	1.68	0.93
3:A:500:VGP:H09	3:A:500:VGP:O04	1.66	0.93
1:A:92:ALA:HA	1:A:93:ASP:CB	1.98	0.93
1:C:12:ARG:HD3	4:C:572:HOH:O	1.72	0.89
1:C:211:THR:HG23	4:C:581:HOH:O	1.72	0.88
1:A:361:HIS:HD2	4:A:534:HOH:O	1.56	0.87
3:B:500:VGP:H21	3:B:500:VGP:O01	1.72	0.87
1:D:359:HIS:HD2	4:D:619:HOH:O	1.57	0.87

*Continued on next page...*

*Continued from previous page...*

Atom-1	Atom-2	Interatomic distance (Å)	Clash overlap (Å)
1:D:65:HIS:CE1	2:D:499:FAD:HM71	2.10	0.86
1:A:222:ARG:NH2	1:D:18:ILE:HD12	1.88	0.86
1:C:173:ARG:HH11	1:C:173:ARG:HG3	1.37	0.86
3:A:500:VGP:H21	3:A:500:VGP:O01	1.76	0.85
1:C:114:ARG:HD3	4:C:634:HOH:O	1.76	0.85
3:D:500:VGP:H21	3:D:500:VGP:O01	1.77	0.84
3:B:500:VGP:H25A	4:B:657:HOH:O	1.78	0.82
1:D:65:HIS:HE1	2:D:499:FAD:HM71	1.46	0.80
1:D:212:GLU:HG3	1:D:213:PRO:CA	2.06	0.80
1:C:492:HIS:HD2	1:C:494:MET:H	1.31	0.78
1:A:93:ASP:CB	1:A:94:GLY:CA	2.61	0.77
3:A:500:VGP:H25A	4:A:590:HOH:O	1.84	0.77
1:D:492:HIS:HD2	1:D:494:MET:H	1.34	0.76
1:A:492:HIS:HD2	1:A:494:MET:H	1.34	0.76
1:B:492:HIS:HD2	1:B:494:MET:H	1.32	0.75
1:A:351:THR:H	1:A:354:GLN:HE21	1.33	0.75
1:C:304:GLU:HG3	1:C:304:GLU:O	1.87	0.75
1:C:341:SER:OG	3:C:500:VGP:H25B	1.87	0.75
1:B:351:THR:H	1:B:354:GLN:HE21	1.35	0.74
1:C:351:THR:H	1:C:354:GLN:HE21	1.34	0.74
1:C:65:HIS:ND1	2:C:499:FAD:HM81	1.99	0.73
1:D:272:HIS:CD2	1:D:274:SER:H	2.06	0.73
1:D:351:THR:H	1:D:354:GLN:HE21	1.37	0.72
1:C:272:HIS:CD2	1:C:274:SER:H	2.08	0.72
1:D:267:THR:HG23	1:D:376:ASN:HD21	1.54	0.72
3:B:500:VGP:C21	3:B:500:VGP:O01	2.36	0.72
1:A:448:TYR:OH	3:A:500:VGP:O05	2.08	0.71
1:B:110:LYS:O	1:B:114:ARG:HG3	1.89	0.71
1:B:272:HIS:CD2	1:B:274:SER:H	2.09	0.70
1:A:267:THR:HG23	1:A:376:ASN:HD21	1.56	0.70
1:C:267:THR:HG23	1:C:376:ASN:HD21	1.55	0.70
1:B:49:GLN:HE22	1:B:167:VAL:H	1.36	0.70
1:A:331:CYS:SG	4:D:578:HOH:O	2.31	0.69
3:D:500:VGP:C21	3:D:500:VGP:O01	2.41	0.69
1:A:272:HIS:CD2	1:A:274:SER:H	2.09	0.69
1:B:267:THR:HG23	1:B:376:ASN:HD21	1.59	0.68
1:B:49:GLN:NE2	1:B:167:VAL:H	1.91	0.68
1:C:341:SER:OG	3:C:500:VGP:C25	2.41	0.68
1:D:65:HIS:CE1	2:D:499:FAD:C7M	2.76	0.68
3:C:500:VGP:O04	3:C:500:VGP:H09	1.91	0.68
3:C:500:VGP:O01	3:C:500:VGP:H21	1.94	0.67

*Continued on next page...*

*Continued from previous page...*

Atom-1	Atom-2	Interatomic distance (Å)	Clash overlap (Å)
3:D:500:VGP:H09	3:D:500:VGP:O04	1.94	0.67
1:D:106:ASP:HB2	1:D:126:SER:HB2	1.77	0.67
1:C:343:SER:HB2	1:C:448:TYR:HD1	1.60	0.66
1:B:106:ASP:HB2	1:B:126:SER:HB2	1.76	0.66
1:C:49:GLN:HE22	1:C:167:VAL:H	1.44	0.66
1:D:161:VAL:HG22	1:D:167:VAL:HG22	1.78	0.66
1:A:361:HIS:CD2	4:A:534:HOH:O	2.40	0.65
1:A:49:GLN:HE22	1:A:167:VAL:H	1.45	0.65
3:A:500:VGP:O01	3:A:500:VGP:C21	2.45	0.65
1:B:161:VAL:HG22	1:B:167:VAL:HG22	1.77	0.65
3:B:500:VGP:C09	3:B:500:VGP:O04	2.32	0.65
1:D:49:GLN:HE22	1:D:167:VAL:H	1.45	0.65
1:A:343:SER:HB2	1:A:448:TYR:HD1	1.61	0.65
1:A:106:ASP:HB2	1:A:126:SER:HB2	1.79	0.64
1:C:27:ARG:HG3	1:C:338:ARG:HB3	1.79	0.64
1:A:279:GLN:NE2	4:A:625:HOH:O	2.31	0.64
1:B:400:LYS:NZ	1:B:448:TYR:CE1	2.67	0.63
1:D:272:HIS:HD2	1:D:274:SER:H	1.46	0.63
1:D:400:LYS:NZ	1:D:448:TYR:CE1	2.66	0.63
1:A:43:ASP:N	1:A:43:ASP:OD2	2.30	0.63
1:C:400:LYS:NZ	1:C:448:TYR:CE1	2.67	0.62
1:A:272:HIS:HE1	1:A:364:ALA:O	1.83	0.62
1:C:211:THR:CG2	4:C:581:HOH:O	2.36	0.62
1:A:95:ALA:HB3	1:A:204:ARG:CZ	2.30	0.61
1:C:272:HIS:HD2	1:C:274:SER:H	1.48	0.61
1:C:284:GLN:HE22	1:C:294:ILE:HB	1.65	0.61
1:B:86:HIS:NE2	4:B:575:HOH:O	2.31	0.61
1:A:331:CYS:SG	1:D:329:ALA:HB3	2.41	0.60
1:C:459:ASN:HD22	1:C:459:ASN:C	2.04	0.60
1:A:222:ARG:NH2	1:D:18:ILE:CD1	2.64	0.60
1:A:196:GLY:HA2	1:A:490:PHE:CE2	2.37	0.60
1:B:361:HIS:HE1	1:B:426:GLU:OE1	1.84	0.60
1:B:425:GLU:OE1	1:B:458:ARG:HD3	2.02	0.60
1:C:154:HIS:HB2	1:C:204:ARG:HB2	1.83	0.60
3:C:500:VGP:H25A	4:C:538:HOH:O	2.02	0.60
1:C:351:THR:H	1:C:354:GLN:NE2	2.00	0.59
1:C:173:ARG:HH11	1:C:173:ARG:CG	2.12	0.59
1:C:217:PRO:HA	4:C:581:HOH:O	2.02	0.59
1:D:459:ASN:ND2	1:D:461:SER:H	2.00	0.59
3:C:500:VGP:O01	3:C:500:VGP:C21	2.50	0.59
1:D:341:SER:OG	3:D:500:VGP:H25B	2.02	0.59

*Continued on next page...*

*Continued from previous page...*

Atom-1	Atom-2	Interatomic distance (Å)	Clash overlap (Å)
1:D:343:SER:HB2	1:D:448:TYR:HD1	1.68	0.59
1:A:361:HIS:HE1	1:A:426:GLU:OE1	1.85	0.59
1:D:196:GLY:HA2	1:D:490:PHE:CE2	2.38	0.59
1:A:445:TYR:CZ	1:A:447:ASN:HB2	2.38	0.58
1:A:304:GLU:CG	1:A:305:GLY:N	2.44	0.58
1:D:425:GLU:OE1	1:D:458:ARG:HD3	2.03	0.58
1:A:27:ARG:HG3	1:A:338:ARG:HB3	1.84	0.58
1:D:84:ASN:HB2	4:D:601:HOH:O	2.02	0.58
1:C:425:GLU:OE1	1:C:458:ARG:HD3	2.04	0.58
1:D:351:THR:H	1:D:354:GLN:NE2	2.01	0.58
1:C:459:ASN:ND2	1:C:461:SER:H	2.00	0.58
1:D:445:TYR:CZ	1:D:447:ASN:HB2	2.39	0.58
1:A:272:HIS:HD2	1:A:274:SER:H	1.52	0.57
1:C:234:MET:HE2	1:C:309:VAL:H	1.68	0.57
1:B:272:HIS:HD2	1:B:274:SER:H	1.50	0.57
1:C:106:ASP:HB2	1:C:126:SER:HB2	1.87	0.57
1:D:27:ARG:HG3	1:D:338:ARG:HB3	1.86	0.57
1:A:161:VAL:HG22	1:A:167:VAL:HG22	1.86	0.57
1:C:359:HIS:CD2	4:C:587:HOH:O	2.34	0.57
1:A:65:HIS:ND1	2:A:499:FAD:HM81	2.09	0.56
1:A:351:THR:H	1:A:354:GLN:NE2	2.00	0.56
1:B:351:THR:H	1:B:354:GLN:NE2	2.02	0.56
1:C:393:PRO:HD2	1:C:394:GLN:NE2	2.21	0.56
1:C:445:TYR:CZ	1:C:447:ASN:HB2	2.40	0.56
1:B:445:TYR:CZ	1:B:447:ASN:HB2	2.40	0.56
1:A:314:GLY:H	1:D:408:GLN:HE22	1.53	0.56
1:C:481:LYS:NZ	4:C:583:HOH:O	2.39	0.56
1:A:459:ASN:C	1:A:459:ASN:HD22	2.07	0.55
1:B:284:GLN:HE22	1:B:294:ILE:HB	1.70	0.55
1:C:394:GLN:H	1:C:394:GLN:HE21	1.55	0.55
1:C:65:HIS:CE1	2:C:499:FAD:C8M	2.55	0.55
1:C:196:GLY:HA2	1:C:490:PHE:CE2	2.41	0.55
1:A:459:ASN:ND2	1:A:461:SER:H	2.04	0.55
1:B:27:ARG:HG3	1:B:338:ARG:HB3	1.87	0.55
1:D:459:ASN:HD22	1:D:459:ASN:C	2.09	0.55
1:A:341:SER:OG	3:A:500:VGP:H25B	2.06	0.55
2:C:499:FAD:N5	3:C:500:VGP:H28	2.22	0.55
1:C:351:THR:N	1:C:354:GLN:HE21	2.04	0.54
1:C:65:HIS:CE1	2:C:499:FAD:HM71	2.42	0.54
1:A:222:ARG:HH22	1:D:18:ILE:CD1	2.20	0.54
1:B:343:SER:HB2	1:B:448:TYR:HD1	1.71	0.54

*Continued on next page...*

*Continued from previous page...*

Atom-1	Atom-2	Interatomic distance (Å)	Clash overlap (Å)
1:D:284:GLN:HE22	1:D:294:ILE:HB	1.72	0.54
1:C:25:ASN:C	1:C:25:ASN:HD22	2.11	0.54
1:A:394:GLN:H	1:A:394:GLN:HE21	1.54	0.54
1:B:143:SER:HB3	1:B:382:ILE:HD11	1.89	0.54
1:A:222:ARG:HH22	1:D:18:ILE:HD12	1.67	0.54
1:B:196:GLY:HA2	1:B:490:PHE:CE2	2.43	0.54
1:A:49:GLN:NE2	1:A:167:VAL:H	2.06	0.54
1:C:49:GLN:NE2	1:C:167:VAL:H	2.06	0.54
1:D:49:GLN:NE2	1:D:167:VAL:H	2.06	0.54
1:A:425:GLU:OE2	1:A:458:ARG:HD3	2.08	0.53
1:A:25:ASN:HD22	1:A:25:ASN:C	2.12	0.53
1:A:284:GLN:HE22	1:A:294:ILE:HB	1.73	0.53
1:C:173:ARG:NH1	1:C:173:ARG:HG3	2.13	0.53
1:C:341:SER:HB3	3:C:500:VGP:H25	1.91	0.53
1:A:92:ALA:CA	1:A:93:ASP:CB	2.79	0.53
1:A:394:GLN:H	1:A:394:GLN:NE2	2.07	0.52
1:B:415:LEU:HD11	4:B:556:HOH:O	2.07	0.52
1:C:66:CYS:HB2	2:C:499:FAD:H52A	1.92	0.52
1:A:267:THR:HG23	1:A:376:ASN:ND2	2.24	0.52
1:A:351:THR:N	1:A:354:GLN:HE21	2.07	0.52
1:B:25:ASN:C	1:B:25:ASN:HD22	2.12	0.52
1:D:143:SER:HB3	1:D:382:ILE:HD11	1.91	0.52
1:B:238:THR:HB	4:B:550:HOH:O	2.10	0.52
1:C:393:PRO:HD2	1:C:394:GLN:HE22	1.75	0.51
1:A:143:SER:HB3	1:A:382:ILE:HD11	1.93	0.51
1:C:459:ASN:ND2	1:C:459:ASN:C	2.63	0.51
1:A:459:ASN:C	1:A:459:ASN:ND2	2.63	0.51
1:A:65:HIS:CE1	2:A:499:FAD:HM71	2.45	0.51
1:C:267:THR:HG23	1:C:376:ASN:ND2	2.24	0.51
1:D:351:THR:N	1:D:354:GLN:HE21	2.05	0.51
1:C:173:ARG:CG	1:C:173:ARG:NH1	2.71	0.51
1:B:214:VAL:HG22	4:B:547:HOH:O	2.10	0.51
2:B:499:FAD:N5	3:B:500:VGP:H28	2.25	0.51
2:D:499:FAD:N5	3:D:500:VGP:H28	2.26	0.51
1:A:194:ASN:HD21	1:A:496:ILE:H	1.59	0.50
1:B:279:GLN:HE22	1:B:313:ARG:HH22	1.59	0.50
3:B:500:VGP:C25	4:B:657:HOH:O	2.47	0.50
1:A:272:HIS:CE1	1:A:364:ALA:O	2.63	0.50
1:A:194:ASN:ND2	1:A:496:ILE:H	2.08	0.50
1:D:234:MET:HE2	1:D:309:VAL:H	1.76	0.50
1:C:194:ASN:ND2	1:C:496:ILE:H	2.08	0.50

*Continued on next page...*

*Continued from previous page...*

Atom-1	Atom-2	Interatomic distance (Å)	Clash overlap (Å)
1:D:279:GLN:HE22	1:D:313:ARG:HH22	1.58	0.50
1:A:265:PHE:CZ	3:A:500:VGP:H18	2.47	0.50
3:A:500:VGP:O04	3:A:500:VGP:C09	2.43	0.50
1:A:234:MET:HE2	1:A:309:VAL:H	1.77	0.50
1:C:341:SER:CB	3:C:500:VGP:H25	2.41	0.49
1:B:478:ARG:NH1	4:B:609:HOH:O	2.45	0.49
1:C:143:SER:HB3	1:C:382:ILE:HD11	1.95	0.49
1:D:25:ASN:HD22	1:D:25:ASN:C	2.16	0.49
1:D:267:THR:HG23	1:D:376:ASN:ND2	2.22	0.48
1:C:394:GLN:NE2	1:C:394:GLN:H	2.10	0.48
1:D:459:ASN:ND2	1:D:459:ASN:C	2.66	0.48
1:D:194:ASN:ND2	1:D:496:ILE:H	2.10	0.48
1:A:331:CYS:HB3	1:D:329:ALA:HB2	1.94	0.48
1:A:393:PRO:HD2	1:A:394:GLN:HE22	1.79	0.48
1:B:25:ASN:ND2	1:B:27:ARG:H	2.11	0.48
1:B:394:GLN:HE21	1:B:394:GLN:H	1.62	0.48
1:D:110:LYS:O	1:D:114:ARG:HG3	2.14	0.48
1:D:474:TYR:CE2	1:D:478:ARG:HD2	2.49	0.48
1:A:66:CYS:HB2	2:A:499:FAD:H52A	1.95	0.48
1:B:234:MET:HE2	1:B:309:VAL:H	1.79	0.48
1:C:459:ASN:HD22	1:C:461:SER:H	1.61	0.48
1:A:40:THR:OG1	1:A:43:ASP:OD2	2.29	0.47
2:C:499:FAD:C4X	3:C:500:VGP:H28	2.44	0.47
1:A:393:PRO:HD2	1:A:394:GLN:NE2	2.29	0.47
1:B:26:HIS:CE1	1:B:336:GLY:HA2	2.49	0.47
1:C:110:LYS:O	1:C:114:ARG:HG3	2.14	0.47
1:B:25:ASN:HD22	1:B:27:ARG:H	1.63	0.47
1:C:284:GLN:NE2	1:C:294:ILE:HB	2.29	0.47
1:D:403:TRP:CD1	1:D:403:TRP:N	2.82	0.47
1:D:369:GLN:CG	4:D:620:HOH:O	2.34	0.47
1:D:459:ASN:HD22	1:D:461:SER:H	1.62	0.47
1:B:403:TRP:CD1	1:B:403:TRP:N	2.82	0.47
1:C:218:ARG:N	4:C:581:HOH:O	2.41	0.47
1:A:84:ASN:HB2	4:A:548:HOH:O	2.15	0.46
1:B:279:GLN:HB3	4:B:552:HOH:O	2.15	0.46
1:B:351:THR:N	1:B:354:GLN:HE21	2.06	0.46
1:D:194:ASN:HD21	1:D:496:ILE:H	1.64	0.46
1:B:162:ASP:HB3	1:B:168:ARG:NH2	2.31	0.46
1:D:212:GLU:CB	1:D:213:PRO:HA	2.35	0.46
1:A:265:PHE:HZ	3:A:500:VGP:H18	1.81	0.46
1:B:272:HIS:HE1	1:B:364:ALA:O	1.99	0.46

*Continued on next page...*

*Continued from previous page...*

Atom-1	Atom-2	Interatomic distance (Å)	Clash overlap (Å)
1:C:26:HIS:CE1	1:C:336:GLY:HA2	2.50	0.46
1:C:474:TYR:CE2	1:C:478:ARG:HD2	2.50	0.46
1:A:110:LYS:O	1:A:114:ARG:HG3	2.15	0.45
1:C:272:HIS:HE1	1:C:364:ALA:O	1.98	0.45
1:A:25:ASN:ND2	1:A:27:ARG:H	2.14	0.45
1:A:279:GLN:HE22	1:A:313:ARG:HH22	1.62	0.45
1:A:26:HIS:CE1	1:A:336:GLY:HA2	2.52	0.45
1:D:393:PRO:HD2	1:D:394:GLN:NE2	2.31	0.45
1:B:343:SER:CB	1:B:448:TYR:HD1	2.29	0.45
1:D:341:SER:HA	1:D:403:TRP:O	2.17	0.45
1:C:194:ASN:HD21	1:C:496:ILE:H	1.63	0.45
1:C:65:HIS:HE1	2:C:499:FAD:HM71	1.81	0.45
1:B:37:LEU:HD12	1:B:37:LEU:N	2.32	0.45
1:C:343:SER:CB	1:C:448:TYR:HD1	2.29	0.45
1:D:25:ASN:ND2	1:D:27:ARG:H	2.15	0.45
1:B:283:GLN:NE2	4:B:546:HOH:O	2.49	0.44
1:C:25:ASN:ND2	1:C:27:ARG:H	2.15	0.44
1:A:361:HIS:HB2	1:A:423:LEU:HD13	1.98	0.44
2:A:499:FAD:N5	3:A:500:VGP:H28	2.32	0.44
1:C:403:TRP:CD1	1:C:403:TRP:N	2.85	0.44
1:B:194:ASN:ND2	1:B:496:ILE:H	2.15	0.44
1:B:267:THR:HG23	1:B:376:ASN:ND2	2.29	0.44
1:A:343:SER:CB	1:A:448:TYR:HD1	2.30	0.44
1:A:481:LYS:HG3	1:A:498:LEU:HD12	2.00	0.44
2:A:499:FAD:C4X	3:A:500:VGP:H28	2.48	0.44
1:D:265:PHE:CZ	3:D:500:VGP:H18	2.53	0.43
1:A:341:SER:HA	1:A:403:TRP:O	2.18	0.43
1:B:214:VAL:CG2	4:B:547:HOH:O	2.66	0.43
1:B:393:PRO:HD2	1:B:394:GLN:HE22	1.83	0.43
1:B:341:SER:HA	1:B:403:TRP:O	2.18	0.43
1:A:403:TRP:N	1:A:403:TRP:CD1	2.86	0.43
1:A:284:GLN:NE2	1:A:294:ILE:HB	2.33	0.43
1:B:393:PRO:HD2	1:B:394:GLN:NE2	2.32	0.43
1:D:26:HIS:CE1	1:D:336:GLY:HA2	2.54	0.43
1:B:459:ASN:C	1:B:459:ASN:HD22	2.20	0.43
1:C:25:ASN:HD22	1:C:26:HIS:N	2.15	0.43
2:C:499:FAD:H1'2	2:C:499:FAD:H9	1.72	0.43
1:D:25:ASN:HD22	1:D:27:ARG:H	1.65	0.43
1:D:163:GLU:HG2	1:D:486:PRO:HG3	2.00	0.43
1:A:25:ASN:HD22	1:A:27:ARG:H	1.65	0.43
1:D:460:ARG:HD2	4:D:582:HOH:O	2.18	0.43

*Continued on next page...*



*Continued from previous page...*

Atom-1	Atom-2	Interatomic distance (Å)	Clash overlap (Å)
1:C:341:SER:HA	1:C:403:TRP:O	2.19	0.43
1:D:14:ASP:HA	1:D:15:PRO:HD3	1.82	0.43
1:D:394:GLN:H	1:D:394:GLN:NE2	2.17	0.43
1:B:394:GLN:NE2	1:B:394:GLN:H	2.16	0.42
1:D:343:SER:CB	1:D:448:TYR:HD1	2.32	0.42
3:A:500:VGP:H25	3:A:500:VGP:H22	1.76	0.42
1:C:343:SER:HB2	1:C:448:TYR:CD1	2.48	0.42
1:D:264:LEU:HD23	1:D:264:LEU:C	2.39	0.42
1:B:459:ASN:ND2	1:B:459:ASN:C	2.72	0.42
1:D:232:TRP:CZ2	1:D:278:LEU:HD21	2.55	0.42
1:D:394:GLN:H	1:D:394:GLN:HE21	1.66	0.42
1:B:361:HIS:HB2	1:B:423:LEU:HD13	2.00	0.42
1:B:279:GLN:CB	4:B:552:HOH:O	2.68	0.42
1:D:58:VAL:HG12	1:D:78:LEU:HB3	2.02	0.42
1:B:212:GLU:HB3	1:B:213:PRO:HA	2.02	0.42
1:B:264:LEU:HD23	1:B:264:LEU:C	2.40	0.42
3:C:500:VGP:H25	3:C:500:VGP:H22	1.86	0.42
1:D:265:PHE:HZ	3:D:500:VGP:H18	1.85	0.42
1:C:180:LEU:HD23	1:C:180:LEU:HA	1.95	0.41
1:C:36:PHE:HB3	1:C:80:LEU:CD2	2.51	0.41
1:B:284:GLN:NE2	1:B:294:ILE:HB	2.34	0.41
1:A:180:LEU:HD23	1:A:180:LEU:HA	1.90	0.41
1:C:37:LEU:HD12	1:C:37:LEU:N	2.35	0.41
1:B:36:PHE:HB3	1:B:80:LEU:CD2	2.50	0.41
1:D:37:LEU:HD12	1:D:37:LEU:N	2.36	0.41
1:A:353:GLU:O	1:A:357:VAL:HG23	2.20	0.41
1:A:474:TYR:CE2	1:A:478:ARG:HD2	2.56	0.41
1:C:400:LYS:HE3	1:C:445:TYR:HB2	2.03	0.41
1:C:264:LEU:HD23	1:C:264:LEU:C	2.41	0.41
1:D:393:PRO:HD2	1:D:394:GLN:HE22	1.85	0.41
1:C:161:VAL:HG22	1:C:167:VAL:HG22	2.02	0.41
1:A:212:GLU:HB3	1:A:213:PRO:HA	2.02	0.41
1:C:302:LEU:HD23	1:C:302:LEU:HA	1.91	0.41
1:A:14:ASP:HA	1:A:15:PRO:HD3	1.95	0.41
1:A:465:TRP:CG	1:A:466:HIS:N	2.89	0.41
1:B:369:GLN:HE21	1:B:369:GLN:HB3	1.57	0.41
1:D:284:GLN:NE2	1:D:294:ILE:HB	2.34	0.41
1:A:65:HIS:HE1	2:A:499:FAD:HM71	1.86	0.40
1:A:37:LEU:HD12	1:A:37:LEU:N	2.37	0.40
3:D:500:VGP:H25	3:D:500:VGP:H22	1.87	0.40
1:A:459:ASN:HD22	1:A:461:SER:H	1.65	0.40

*Continued on next page...*

Continued from previous page...

Atom-1	Atom-2	Interatomic distance (Å)	Clash overlap (Å)
1:B:267:THR:HA	1:B:376:ASN:HD22	1.86	0.40
1:B:49:GLN:O	1:B:50:LYS:C	2.59	0.40
2:D:499:FAD:H1'2	2:D:499:FAD:H9	1.75	0.40
1:D:91:ALA:O	1:D:92:ALA:C	2.59	0.40
1:A:140:GLY:HA2	3:A:500:VGP:C19	2.52	0.40
1:B:341:SER:OG	3:B:500:VGP:H25B	2.21	0.40

There are no symmetry-related clashes.

## 5.3 Torsion angles [i](#)

### 5.3.1 Protein backbone [i](#)

In the following table, the Percentiles column shows the percent Ramachandran outliers of the chain as a percentile score with respect to all X-ray entries followed by that with respect to entries of similar resolution.

The Analysed column shows the number of residues for which the backbone conformation was analysed, and the total number of residues.

Mol	Chain	Analysed	Favoured	Allowed	Outliers	Percentiles	
1	A	490/501 (98%)	471 (96%)	19 (4%)	0	100	100
1	B	491/501 (98%)	473 (96%)	18 (4%)	0	100	100
1	C	491/501 (98%)	477 (97%)	14 (3%)	0	100	100
1	D	489/501 (98%)	475 (97%)	14 (3%)	0	100	100
All	All	1961/2004 (98%)	1896 (97%)	65 (3%)	0	100	100

There are no Ramachandran outliers to report.

### 5.3.2 Protein sidechains [i](#)

In the following table, the Percentiles column shows the percent sidechain outliers of the chain as a percentile score with respect to all X-ray entries followed by that with respect to entries of similar resolution.

The Analysed column shows the number of residues for which the sidechain conformation was analysed, and the total number of residues.

Mol	Chain	Analysed	Rotameric	Outliers	Percentiles	
1	A	379/396 (96%)	366 (97%)	13 (3%)	37	51
1	B	375/396 (95%)	363 (97%)	12 (3%)	39	53
1	C	377/396 (95%)	360 (96%)	17 (4%)	27	38
1	D	377/396 (95%)	366 (97%)	11 (3%)	42	57
All	All	1508/1584 (95%)	1455 (96%)	53 (4%)	36	49

All (53) residues with a non-rotameric sidechain are listed below:

Mol	Chain	Res	Type
1	A	25	ASN
1	A	43	ASP
1	A	81	ASP
1	A	112	LEU
1	A	168	ARG
1	A	268	PHE
1	A	304	GLU
1	A	343	SER
1	A	365	ASP
1	A	394	GLN
1	A	420	LEU
1	A	458	ARG
1	A	459	ASN
1	B	25	ASN
1	B	50	LYS
1	B	81	ASP
1	B	168	ARG
1	B	268	PHE
1	B	343	SER
1	B	369	GLN
1	B	394	GLN
1	B	420	LEU
1	B	458	ARG
1	B	459	ASN
1	B	460	ARG
1	C	25	ASN
1	C	50	LYS
1	C	81	ASP
1	C	112	LEU
1	C	168	ARG
1	C	173	ARG
1	C	204	ARG
1	C	256	GLU

*Continued on next page...*

*Continued from previous page...*

Mol	Chain	Res	Type
1	C	268	PHE
1	C	291	GLU
1	C	343	SER
1	C	365	ASP
1	C	369	GLN
1	C	394	GLN
1	C	420	LEU
1	C	458	ARG
1	C	459	ASN
1	D	13	GLU
1	D	25	ASN
1	D	81	ASP
1	D	212	GLU
1	D	268	PHE
1	D	343	SER
1	D	369	GLN
1	D	394	GLN
1	D	420	LEU
1	D	458	ARG
1	D	459	ASN

Some sidechains can be flipped to improve hydrogen bonding and reduce clashes. All (62) such sidechains are listed below:

Mol	Chain	Res	Type
1	A	25	ASN
1	A	49	GLN
1	A	68	GLN
1	A	117	ASN
1	A	194	ASN
1	A	226	GLN
1	A	272	HIS
1	A	279	GLN
1	A	284	GLN
1	A	354	GLN
1	A	361	HIS
1	A	376	ASN
1	A	394	GLN
1	A	416	HIS
1	A	459	ASN
1	A	492	HIS
1	B	25	ASN
1	B	49	GLN

*Continued on next page...*

*Continued from previous page...*

<b>Mol</b>	<b>Chain</b>	<b>Res</b>	<b>Type</b>
1	B	68	GLN
1	B	194	ASN
1	B	226	GLN
1	B	272	HIS
1	B	279	GLN
1	B	284	GLN
1	B	354	GLN
1	B	361	HIS
1	B	369	GLN
1	B	376	ASN
1	B	394	GLN
1	B	416	HIS
1	B	459	ASN
1	B	492	HIS
1	C	25	ASN
1	C	49	GLN
1	C	68	GLN
1	C	83	HIS
1	C	194	ASN
1	C	226	GLN
1	C	272	HIS
1	C	284	GLN
1	C	354	GLN
1	C	376	ASN
1	C	394	GLN
1	C	416	HIS
1	C	459	ASN
1	C	492	HIS
1	D	25	ASN
1	D	49	GLN
1	D	117	ASN
1	D	194	ASN
1	D	226	GLN
1	D	272	HIS
1	D	279	GLN
1	D	284	GLN
1	D	354	GLN
1	D	369	GLN
1	D	376	ASN
1	D	394	GLN
1	D	408	GLN
1	D	416	HIS

*Continued on next page...*

Continued from previous page...

Mol	Chain	Res	Type
1	D	459	ASN
1	D	492	HIS

### 5.3.3 RNA [i](#)

There are no RNA molecules in this entry.

### 5.4 Non-standard residues in protein, DNA, RNA chains [i](#)

There are no non-standard protein/DNA/RNA residues in this entry.

### 5.5 Carbohydrates [i](#)

There are no carbohydrates in this entry.

### 5.6 Ligand geometry [i](#)

8 ligands are modelled in this entry.

In the following table, the Counts columns list the number of bonds (or angles) for which Mogul statistics could be retrieved, the number of bonds (or angles) that are observed in the model and the number of bonds (or angles) that are defined in the Chemical Component Dictionary. The Link column lists molecule types, if any, to which the group is linked. The Z score for a bond length (or angle) is the number of standard deviations the observed value is removed from the expected value. A bond length (or angle) with  $|Z| > 2$  is considered an outlier worth inspection. RMSZ is the root-mean-square of all Z scores of the bond lengths (or angles).

Mol	Type	Chain	Res	Link	Bond lengths			Bond angles		
					Counts	RMSZ	$\# Z  > 2$	Counts	RMSZ	$\# Z  > 2$
2	FAD	A	499	1	51,58,58	2.09	21 (41%)	60,89,89	1.99	12 (20%)
3	VGP	D	500	-	39,40,40	2.02	12 (30%)	53,61,61	2.15	13 (24%)
3	VGP	A	500	-	39,40,40	2.10	10 (25%)	53,61,61	2.12	19 (35%)
2	FAD	B	499	1	51,58,58	2.23	24 (47%)	60,89,89	2.01	12 (20%)
3	VGP	C	500	-	39,40,40	1.95	10 (25%)	53,61,61	2.06	16 (30%)
2	FAD	D	499	1	51,58,58	2.06	24 (47%)	60,89,89	1.84	14 (23%)
2	FAD	C	499	1	51,58,58	2.03	22 (43%)	60,89,89	1.84	12 (20%)
3	VGP	B	500	-	39,40,40	2.30	14 (35%)	53,61,61	2.46	19 (35%)

In the following table, the Chirals column lists the number of chiral outliers, the number of chiral

centers analysed, the number of these observed in the model and the number defined in the Chemical Component Dictionary. Similar counts are reported in the Torsions and Rings columns. '-' means no outliers of that kind were identified.

Mol	Type	Chain	Res	Link	Chirals	Torsions	Rings
2	FAD	A	499	1	-	6/30/50/50	0/6/6/6
3	VGP	D	500	-	-	6/14/42/42	0/5/5/5
3	VGP	A	500	-	-	6/14/42/42	0/5/5/5
2	FAD	B	499	1	-	2/30/50/50	0/6/6/6
3	VGP	C	500	-	-	6/14/42/42	0/5/5/5
2	FAD	D	499	1	-	6/30/50/50	0/6/6/6
2	FAD	C	499	1	-	7/30/50/50	0/6/6/6
3	VGP	B	500	-	-	8/14/42/42	0/5/5/5

All (137) bond length outliers are listed below:

Mol	Chain	Res	Type	Atoms	Z	Observed(Å)	Ideal(Å)
3	B	500	VGP	O06-C21	-6.09	1.35	1.44
3	B	500	VGP	C08-C13	-6.06	1.39	1.48
3	A	500	VGP	O06-C21	-6.05	1.35	1.44
3	A	500	VGP	C08-C13	-5.71	1.39	1.48
3	C	500	VGP	O06-C21	-5.53	1.36	1.44
3	D	500	VGP	O06-C21	-5.44	1.36	1.44
3	A	500	VGP	O06-C23	-4.40	1.37	1.44
3	A	500	VGP	C20-C21	-4.37	1.49	1.54
3	B	500	VGP	O06-C23	-4.33	1.37	1.44
3	D	500	VGP	C08-C13	-4.31	1.41	1.48
2	B	499	FAD	C4X-C10	-4.18	1.34	1.38
3	C	500	VGP	O06-C23	-4.08	1.38	1.44
2	D	499	FAD	PA-O1A	-3.90	1.37	1.50
2	A	499	FAD	PA-O1A	-3.85	1.37	1.50
2	A	499	FAD	P-O2P	-3.84	1.37	1.55
3	B	500	VGP	C13-C12	-3.83	1.36	1.41
3	D	500	VGP	O06-C23	-3.75	1.38	1.44
2	A	499	FAD	PA-O2A	-3.72	1.37	1.55
2	B	499	FAD	PA-O1A	-3.71	1.37	1.50
2	C	499	FAD	PA-O1A	-3.68	1.37	1.50
3	C	500	VGP	C08-C13	-3.66	1.42	1.48
2	B	499	FAD	PA-O2A	-3.65	1.38	1.55
2	D	499	FAD	PA-O2A	-3.64	1.38	1.55
3	C	500	VGP	C20-C21	-3.61	1.49	1.54
2	C	499	FAD	C2-N3	-3.60	1.31	1.38
2	C	499	FAD	P-O2P	-3.57	1.38	1.55

*Continued on next page...*

*Continued from previous page...*

Mol	Chain	Res	Type	Atoms	Z	Observed(Å)	Ideal(Å)
2	B	499	FAD	C4-C4X	-3.55	1.35	1.41
3	B	500	VGP	C20-C21	-3.49	1.50	1.54
2	C	499	FAD	PA-O2A	-3.46	1.39	1.55
2	C	499	FAD	O2'-C2'	-3.45	1.36	1.43
2	D	499	FAD	P-O1P	-3.43	1.38	1.50
2	B	499	FAD	O4'-C4'	-3.43	1.36	1.43
3	D	500	VGP	C13-C12	-3.40	1.37	1.41
2	B	499	FAD	P-O1P	-3.36	1.39	1.50
2	B	499	FAD	P-O2P	-3.34	1.39	1.55
2	B	499	FAD	C9A-C5X	-3.28	1.36	1.42
2	A	499	FAD	O2B-C2B	-3.27	1.35	1.43
2	C	499	FAD	O4'-C4'	-3.26	1.36	1.43
2	A	499	FAD	O4-C4	-3.22	1.16	1.24
2	A	499	FAD	O4'-C4'	-3.19	1.36	1.43
2	B	499	FAD	C8A-N7A	-3.18	1.29	1.34
2	B	499	FAD	O3B-C3B	-3.10	1.35	1.43
2	D	499	FAD	P-O2P	-3.09	1.40	1.55
2	B	499	FAD	C9-C9A	-3.09	1.34	1.40
3	B	500	VGP	C13-C17	-3.07	1.36	1.40
3	B	500	VGP	C19-C18	3.06	1.49	1.29
2	A	499	FAD	P-O1P	-3.06	1.40	1.50
3	A	500	VGP	C19-C18	3.04	1.49	1.29
2	A	499	FAD	O4B-C4B	-3.00	1.38	1.45
3	D	500	VGP	C19-C18	3.00	1.49	1.29
2	D	499	FAD	O2B-C2B	-2.98	1.36	1.43
3	B	500	VGP	O08-C20	-2.98	1.36	1.43
3	C	500	VGP	C19-C18	2.96	1.48	1.29
2	A	499	FAD	C4A-N3A	-2.95	1.31	1.35
2	D	499	FAD	O4B-C4B	-2.93	1.38	1.45
2	A	499	FAD	O2'-C2'	-2.92	1.37	1.43
2	D	499	FAD	C9A-C5X	-2.89	1.36	1.42
2	C	499	FAD	C8A-N7A	-2.88	1.29	1.34
2	C	499	FAD	P-O1P	-2.85	1.40	1.50
2	B	499	FAD	O2B-C2B	-2.85	1.36	1.43
3	C	500	VGP	O08-C20	-2.85	1.36	1.43
2	A	499	FAD	C9A-C5X	-2.85	1.36	1.42
2	A	499	FAD	C5A-N7A	-2.85	1.29	1.39
2	D	499	FAD	O2'-C2'	-2.85	1.37	1.43
3	C	500	VGP	O07-C22	-2.80	1.36	1.43
3	A	500	VGP	O07-C22	-2.79	1.36	1.43
2	D	499	FAD	C2B-C1B	-2.79	1.49	1.53
3	B	500	VGP	C12-C11	-2.79	1.46	1.50

*Continued on next page...*



*Continued from previous page...*

Mol	Chain	Res	Type	Atoms	Z	Observed(Å)	Ideal(Å)
2	D	499	FAD	O3B-C3B	-2.77	1.36	1.43
2	D	499	FAD	O4'-C4'	-2.76	1.37	1.43
2	D	499	FAD	C2'-C3'	-2.73	1.48	1.53
2	A	499	FAD	O3B-C3B	-2.71	1.36	1.43
3	B	500	VGP	O07-C22	-2.69	1.36	1.43
3	D	500	VGP	C20-C21	-2.69	1.50	1.54
2	B	499	FAD	C5'-C4'	-2.67	1.48	1.51
3	D	500	VGP	O08-C20	-2.66	1.36	1.43
2	C	499	FAD	O3B-C3B	-2.65	1.36	1.43
3	D	500	VGP	O-C24	-2.65	1.35	1.43
3	C	500	VGP	O-C24	-2.64	1.35	1.43
2	B	499	FAD	C2-N3	-2.64	1.32	1.38
3	A	500	VGP	O08-C20	-2.63	1.36	1.43
2	C	499	FAD	O4B-C4B	-2.63	1.39	1.45
2	C	499	FAD	O2B-C2B	-2.62	1.36	1.43
3	D	500	VGP	C12-C11	-2.62	1.46	1.50
2	B	499	FAD	O2'-C2'	-2.60	1.37	1.43
2	D	499	FAD	C4X-C10	-2.58	1.36	1.38
2	D	499	FAD	C4A-N3A	-2.58	1.32	1.35
2	A	499	FAD	C5'-C4'	-2.57	1.48	1.51
2	A	499	FAD	O3'-C3'	-2.57	1.36	1.43
2	C	499	FAD	O4-C4	-2.56	1.18	1.24
2	C	499	FAD	C5A-C4A	-2.55	1.34	1.40
2	B	499	FAD	O4-C4	-2.53	1.18	1.24
2	B	499	FAD	C9A-N10	-2.49	1.35	1.38
2	C	499	FAD	C4A-N3A	-2.47	1.32	1.35
2	C	499	FAD	C5A-N7A	-2.45	1.30	1.39
2	D	499	FAD	C2-N3	-2.44	1.33	1.38
3	C	500	VGP	C22-C20	-2.43	1.46	1.53
3	A	500	VGP	C22-C20	-2.42	1.46	1.53
2	A	499	FAD	C9-C9A	-2.40	1.35	1.40
2	D	499	FAD	C5A-N7A	-2.40	1.31	1.39
3	D	500	VGP	O07-C22	-2.39	1.37	1.43
2	B	499	FAD	C2B-C1B	-2.37	1.50	1.53
2	C	499	FAD	C2-N1	-2.37	1.33	1.38
2	D	499	FAD	O3'-C3'	-2.36	1.37	1.43
2	A	499	FAD	C2B-C1B	-2.35	1.50	1.53
2	C	499	FAD	O3'-C3'	-2.32	1.37	1.43
3	D	500	VGP	O04-C	-2.32	1.35	1.42
2	B	499	FAD	C5A-N7A	-2.32	1.31	1.39
2	B	499	FAD	O4B-C4B	-2.31	1.39	1.45
2	D	499	FAD	O4-C4	-2.30	1.18	1.24

*Continued on next page...*

Continued from previous page...

Mol	Chain	Res	Type	Atoms	Z	Observed(Å)	Ideal(Å)
3	A	500	VGP	O-C24	-2.29	1.36	1.43
2	D	499	FAD	C8A-N7A	-2.29	1.30	1.34
2	A	499	FAD	C2-N3	-2.24	1.33	1.38
2	A	499	FAD	C8A-N7A	-2.21	1.30	1.34
2	D	499	FAD	C5A-C4A	-2.20	1.35	1.40
3	B	500	VGP	O-C24	-2.18	1.37	1.43
2	A	499	FAD	C2B-C3B	-2.18	1.47	1.53
2	D	499	FAD	C4-C4X	-2.18	1.37	1.41
3	A	500	VGP	C13-C12	-2.17	1.38	1.41
2	A	499	FAD	C4-C4X	-2.16	1.37	1.41
3	D	500	VGP	C22-C23	-2.16	1.48	1.52
3	B	500	VGP	C07-C04	-2.14	1.38	1.43
2	C	499	FAD	C2B-C1B	-2.14	1.50	1.53
2	B	499	FAD	C5A-C4A	-2.13	1.35	1.40
2	D	499	FAD	C2B-C3B	-2.13	1.47	1.53
3	B	500	VGP	O04-C	-2.11	1.36	1.42
2	C	499	FAD	C9A-N10	-2.09	1.35	1.38
2	C	499	FAD	C10-N1	2.07	1.35	1.33
2	B	499	FAD	O3'-C3'	-2.06	1.38	1.43
2	B	499	FAD	C2-N1	-2.04	1.34	1.38
3	C	500	VGP	O04-C	-2.03	1.36	1.42
2	C	499	FAD	C9-C9A	-2.02	1.36	1.40
2	B	499	FAD	C2B-C3B	-2.02	1.47	1.53
2	C	499	FAD	O5'-C5'	-2.02	1.37	1.44
2	D	499	FAD	C8-C7	-2.01	1.35	1.40
3	B	500	VGP	C22-C20	-2.00	1.47	1.53
2	D	499	FAD	C7M-C7	-2.00	1.47	1.51

All (117) bond angle outliers are listed below:

Mol	Chain	Res	Type	Atoms	Z	Observed(°)	Ideal(°)
3	B	500	VGP	O06-C21-C03	-7.51	104.54	109.64
2	A	499	FAD	C5X-C9A-N10	6.77	122.62	117.72
3	D	500	VGP	O05-C11-O01	6.70	121.29	110.91
2	B	499	FAD	C4-N3-C2	6.55	120.67	115.14
2	D	499	FAD	C4-N3-C2	6.45	120.59	115.14
3	D	500	VGP	O01-C11-C12	6.31	117.35	112.24
2	A	499	FAD	C4-N3-C2	6.10	120.29	115.14
3	C	500	VGP	C07-O01-C11	6.09	124.39	113.62
2	B	499	FAD	C5X-C9A-N10	5.94	122.02	117.72
3	A	500	VGP	C07-O01-C11	5.88	124.01	113.62
3	B	500	VGP	C07-O01-C11	5.46	123.27	113.62

Continued on next page...

*Continued from previous page...*

Mol	Chain	Res	Type	Atoms	Z	Observed(°)	Ideal(°)
2	B	499	FAD	N3A-C2A-N1A	-5.17	120.60	128.68
2	C	499	FAD	C4-N3-C2	5.12	119.47	115.14
2	D	499	FAD	C5X-C9A-N10	5.07	121.39	117.72
3	D	500	VGP	C07-O01-C11	4.99	122.44	113.62
2	A	499	FAD	N3A-C2A-N1A	-4.94	120.96	128.68
3	B	500	VGP	O05-C11-O01	4.89	118.48	110.91
2	C	499	FAD	N3A-C2A-N1A	-4.85	121.10	128.68
2	C	499	FAD	C5X-C9A-N10	4.79	121.19	117.72
2	D	499	FAD	N3A-C2A-N1A	-4.72	121.31	128.68
3	A	500	VGP	O05-C11-O01	4.64	118.10	110.91
3	C	500	VGP	C22-C20-C21	4.60	107.23	101.93
2	B	499	FAD	C4X-N5-C5X	4.58	121.35	116.77
3	C	500	VGP	C03-C21-C20	-4.57	107.17	115.32
3	B	500	VGP	C25-C24-C23	4.48	117.27	112.02
2	D	499	FAD	C4X-N5-C5X	4.37	121.13	116.77
3	B	500	VGP	O06-C23-C24	-4.34	102.40	109.25
3	B	500	VGP	C22-C20-C21	4.30	106.89	101.93
3	B	500	VGP	C03-C21-C20	-4.17	107.88	115.32
3	D	500	VGP	O04-C17-C13	4.17	121.14	115.44
3	A	500	VGP	O05-C11-C12	4.16	120.32	110.83
3	D	500	VGP	C14-C12-C13	4.08	122.34	118.79
3	A	500	VGP	O03-C10-C05	4.03	121.82	115.89
2	A	499	FAD	C1'-N10-C9A	3.99	121.44	118.29
2	C	499	FAD	C7-C6-C5X	-3.94	115.64	121.22
3	C	500	VGP	O01-C11-C12	3.91	115.41	112.24
2	B	499	FAD	C1'-N10-C9A	3.84	121.32	118.29
3	C	500	VGP	C-O04-C17	3.83	123.31	117.53
2	A	499	FAD	C4A-C5A-N7A	-3.80	105.44	109.40
3	D	500	VGP	C22-C20-C21	3.77	106.28	101.93
3	B	500	VGP	O01-C11-C12	3.75	115.28	112.24
2	B	499	FAD	C7-C6-C5X	-3.72	115.96	121.22
3	B	500	VGP	C02-C03-C04	3.66	122.38	119.08
3	C	500	VGP	O04-C17-C13	3.65	120.44	115.44
3	A	500	VGP	O01-C11-C12	3.64	115.19	112.24
3	D	500	VGP	C25-C24-C23	3.60	116.23	112.02
3	A	500	VGP	O04-C17-C13	3.41	120.10	115.44
3	D	500	VGP	O04-C17-C16	-3.39	118.28	124.12
3	B	500	VGP	C08-C13-C17	-3.37	119.29	124.61
3	C	500	VGP	O05-C11-C12	3.35	118.48	110.83
2	C	499	FAD	C5'-C4'-C3'	-3.32	105.78	112.20
3	C	500	VGP	C14-C12-C13	3.31	121.68	118.79
2	D	499	FAD	C4X-C4-N3	-3.31	118.91	123.43

*Continued on next page...*

*Continued from previous page...*

Mol	Chain	Res	Type	Atoms	Z	Observed(°)	Ideal(°)
2	C	499	FAD	C4X-N5-C5X	3.30	120.07	116.77
3	D	500	VGP	O06-C23-C24	-3.26	104.11	109.25
3	A	500	VGP	C26-O03-C10	3.25	122.29	117.75
2	B	499	FAD	C9A-C5X-N5	-3.20	117.36	122.36
3	A	500	VGP	C03-C21-C20	-3.18	109.65	115.32
2	A	499	FAD	C4X-N5-C5X	3.16	119.93	116.77
2	C	499	FAD	C1'-N10-C10	3.15	121.23	118.41
2	C	499	FAD	C1'-N10-C9A	3.08	120.72	118.29
3	A	500	VGP	C02-C03-C04	3.06	121.84	119.08
2	A	499	FAD	C9A-N10-C10	-3.06	117.91	121.91
3	B	500	VGP	O03-C10-C05	3.02	120.33	115.89
2	D	499	FAD	C1'-N10-C10	3.01	121.11	118.41
2	C	499	FAD	C9A-N10-C10	-2.95	118.05	121.91
3	B	500	VGP	O-C24-C23	2.90	114.38	108.72
2	A	499	FAD	C7-C6-C5X	-2.89	117.13	121.22
3	C	500	VGP	O06-C23-C24	-2.87	104.73	109.25
2	C	499	FAD	C4-C4X-C10	-2.86	118.06	119.95
3	B	500	VGP	C14-C12-C13	2.84	121.26	118.79
3	A	500	VGP	O-C24-C23	2.84	114.27	108.72
2	D	499	FAD	C7-C6-C5X	-2.76	117.31	121.22
3	D	500	VGP	O05-C11-C12	2.75	117.11	110.83
3	C	500	VGP	O04-C17-C16	-2.73	119.42	124.12
3	A	500	VGP	O01-C07-C04	2.68	119.82	116.12
3	B	500	VGP	C26-O03-C10	2.66	121.47	117.75
2	B	499	FAD	O4B-C1B-C2B	-2.60	103.13	106.93
3	A	500	VGP	C-O04-C17	2.60	121.45	117.53
3	C	500	VGP	O05-C11-O01	2.55	114.87	110.91
2	C	499	FAD	C4-C4X-N5	2.55	121.51	118.60
3	A	500	VGP	O03-C10-C09	-2.52	118.85	123.34
2	A	499	FAD	C4-C4X-C10	-2.52	118.28	119.95
3	A	500	VGP	C13-C08-C07	2.49	120.95	118.04
2	A	499	FAD	C1'-N10-C10	2.49	120.64	118.41
2	B	499	FAD	O2'-C2'-C3'	-2.49	103.04	109.10
3	C	500	VGP	O03-C10-C05	2.46	119.50	115.89
2	A	499	FAD	C9A-C5X-N5	-2.42	118.58	122.36
3	A	500	VGP	C08-C13-C17	-2.41	120.81	124.61
3	C	500	VGP	C02-C03-C04	2.39	121.24	119.08
3	B	500	VGP	C22-C23-C24	2.36	119.04	115.91
2	D	499	FAD	C9A-N10-C10	-2.35	118.83	121.91
3	C	500	VGP	O03-C10-C09	-2.34	119.17	123.34
2	D	499	FAD	C9A-C5X-N5	-2.34	118.70	122.36
2	B	499	FAD	C6-C5X-C9A	2.32	122.10	119.05

*Continued on next page...*

*Continued from previous page...*

Mol	Chain	Res	Type	Atoms	Z	Observed(°)	Ideal(°)
3	B	500	VGP	C09-C08-C07	2.32	121.47	118.29
3	C	500	VGP	O06-C21-C03	-2.31	108.07	109.64
3	D	500	VGP	C01-C06-C05	-2.29	118.87	120.59
3	B	500	VGP	C01-C02-C03	-2.29	117.83	121.82
3	D	500	VGP	C03-C21-C20	-2.29	111.23	115.32
2	B	499	FAD	C9A-N10-C10	-2.27	118.94	121.91
2	B	499	FAD	C4X-C4-N3	-2.26	120.35	123.43
3	C	500	VGP	C13-C12-C11	2.26	121.27	118.28
3	A	500	VGP	C09-C08-C13	-2.25	119.47	123.35
3	A	500	VGP	C22-C20-C21	2.25	104.53	101.93
2	D	499	FAD	C1'-N10-C9A	2.24	120.06	118.29
2	D	499	FAD	C7M-C7-C8	-2.23	116.16	120.74
3	D	500	VGP	C13-C12-C11	2.19	121.18	118.28
2	D	499	FAD	C10-C4X-N5	-2.17	119.75	121.26
3	A	500	VGP	O04-C17-C16	-2.16	120.41	124.12
3	B	500	VGP	C13-C12-C11	2.13	121.10	118.28
3	A	500	VGP	O06-C23-C24	-2.12	105.91	109.25
3	B	500	VGP	O05-C11-C12	2.09	115.59	110.83
2	C	499	FAD	C4A-C5A-N7A	-2.06	107.25	109.40
2	A	499	FAD	C5A-C6A-N6A	2.04	123.46	120.35
2	D	499	FAD	O3B-C3B-C2B	-2.03	105.24	111.82
2	D	499	FAD	C4'-C3'-C2'	-2.02	109.17	113.36

There are no chirality outliers.

All (47) torsion outliers are listed below:

Mol	Chain	Res	Type	Atoms
2	A	499	FAD	O3'-C3'-C4'-C5'
3	D	500	VGP	O06-C23-C24-O
3	D	500	VGP	O06-C23-C24-C25
3	D	500	VGP	C22-C23-C24-O
3	D	500	VGP	C22-C23-C24-C25
3	A	500	VGP	O06-C23-C24-O
3	A	500	VGP	O06-C23-C24-C25
3	A	500	VGP	C22-C23-C24-O
3	A	500	VGP	C22-C23-C24-C25
3	C	500	VGP	O06-C23-C24-O
3	C	500	VGP	O06-C23-C24-C25
3	C	500	VGP	C22-C23-C24-O
3	C	500	VGP	C22-C23-C24-C25
2	C	499	FAD	O3'-C3'-C4'-C5'
3	B	500	VGP	O06-C23-C24-O

*Continued on next page...*

*Continued from previous page...*

Mol	Chain	Res	Type	Atoms
3	B	500	VGP	O06-C23-C24-C25
3	B	500	VGP	C22-C23-C24-O
3	B	500	VGP	C22-C23-C24-C25
2	C	499	FAD	C2'-C3'-C4'-C5'
2	A	499	FAD	C2'-C3'-C4'-C5'
3	A	500	VGP	C14-C15-C18-C19
3	B	500	VGP	C14-C15-C18-C19
2	A	499	FAD	O3'-C3'-C4'-O4'
2	D	499	FAD	O3'-C3'-C4'-O4'
2	C	499	FAD	O3'-C3'-C4'-O4'
2	A	499	FAD	C2'-C3'-C4'-O4'
2	C	499	FAD	C2'-C3'-C4'-O4'
3	A	500	VGP	C16-C15-C18-C19
3	C	500	VGP	C14-C15-C18-C19
2	C	499	FAD	O4'-C4'-C5'-O5'
2	D	499	FAD	O3'-C3'-C4'-C5'
2	D	499	FAD	C2'-C3'-C4'-C5'
2	D	499	FAD	C2'-C3'-C4'-O4'
3	B	500	VGP	C16-C15-C18-C19
2	C	499	FAD	C3'-C4'-C5'-O5'
3	C	500	VGP	C16-C15-C18-C19
3	B	500	VGP	C05-C10-O03-C26
3	D	500	VGP	C14-C15-C18-C19
3	D	500	VGP	C16-C15-C18-C19
3	B	500	VGP	C09-C10-O03-C26
2	A	499	FAD	C5'-O5'-P-O3P
2	C	499	FAD	C5'-O5'-P-O3P
2	B	499	FAD	C2'-C3'-C4'-C5'
2	D	499	FAD	P-O3P-PA-O1A
2	B	499	FAD	C2'-C3'-C4'-O4'
2	A	499	FAD	C3'-C4'-C5'-O5'
2	D	499	FAD	N10-C1'-C2'-O2'

There are no ring outliers.

8 monomers are involved in 61 short contacts:

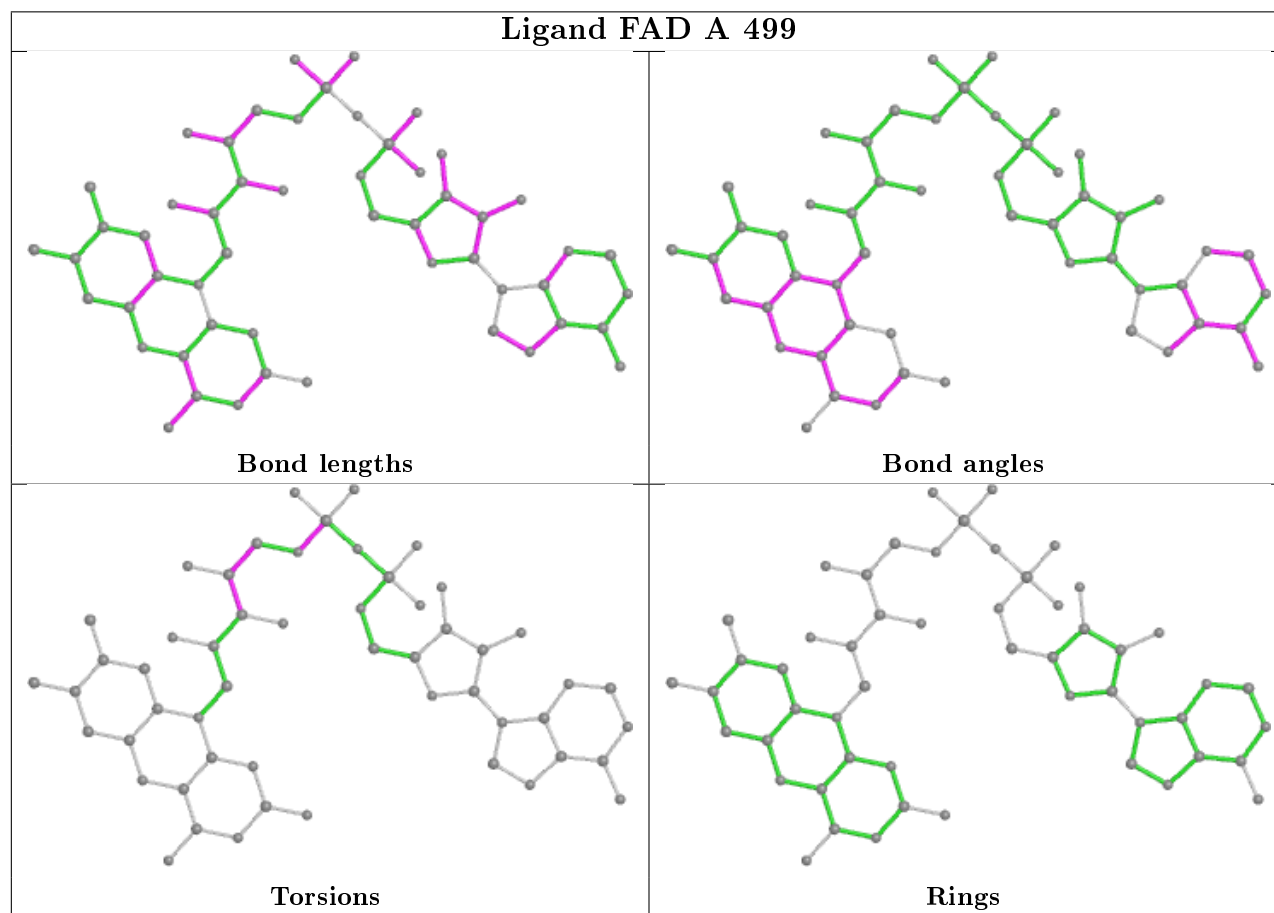
Mol	Chain	Res	Type	Clashes	Symm-Clashes
2	A	499	FAD	8	0
3	D	500	VGP	9	0
3	A	500	VGP	13	0
2	B	499	FAD	3	0
3	C	500	VGP	11	0

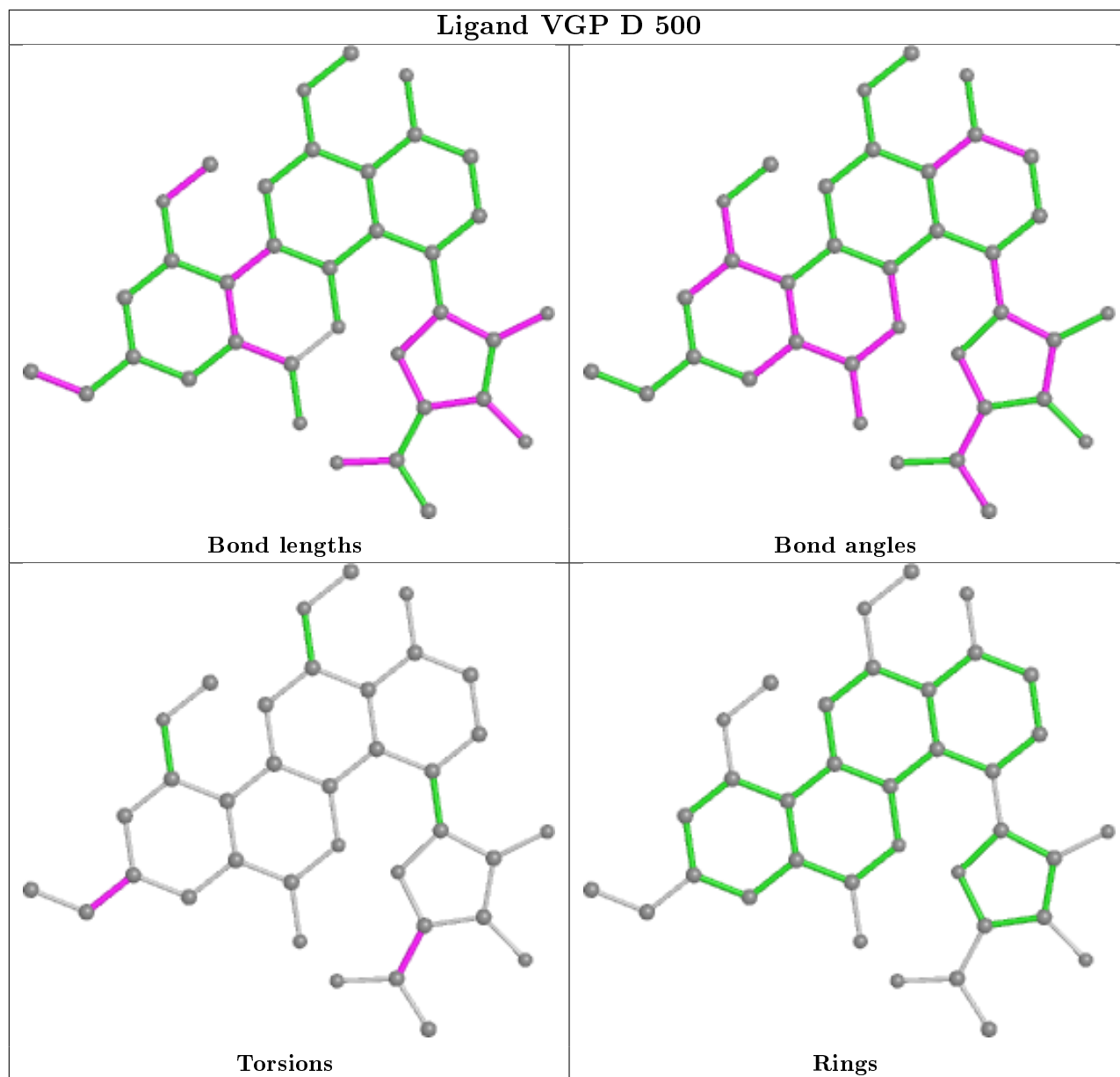
*Continued on next page...*

*Continued from previous page...*

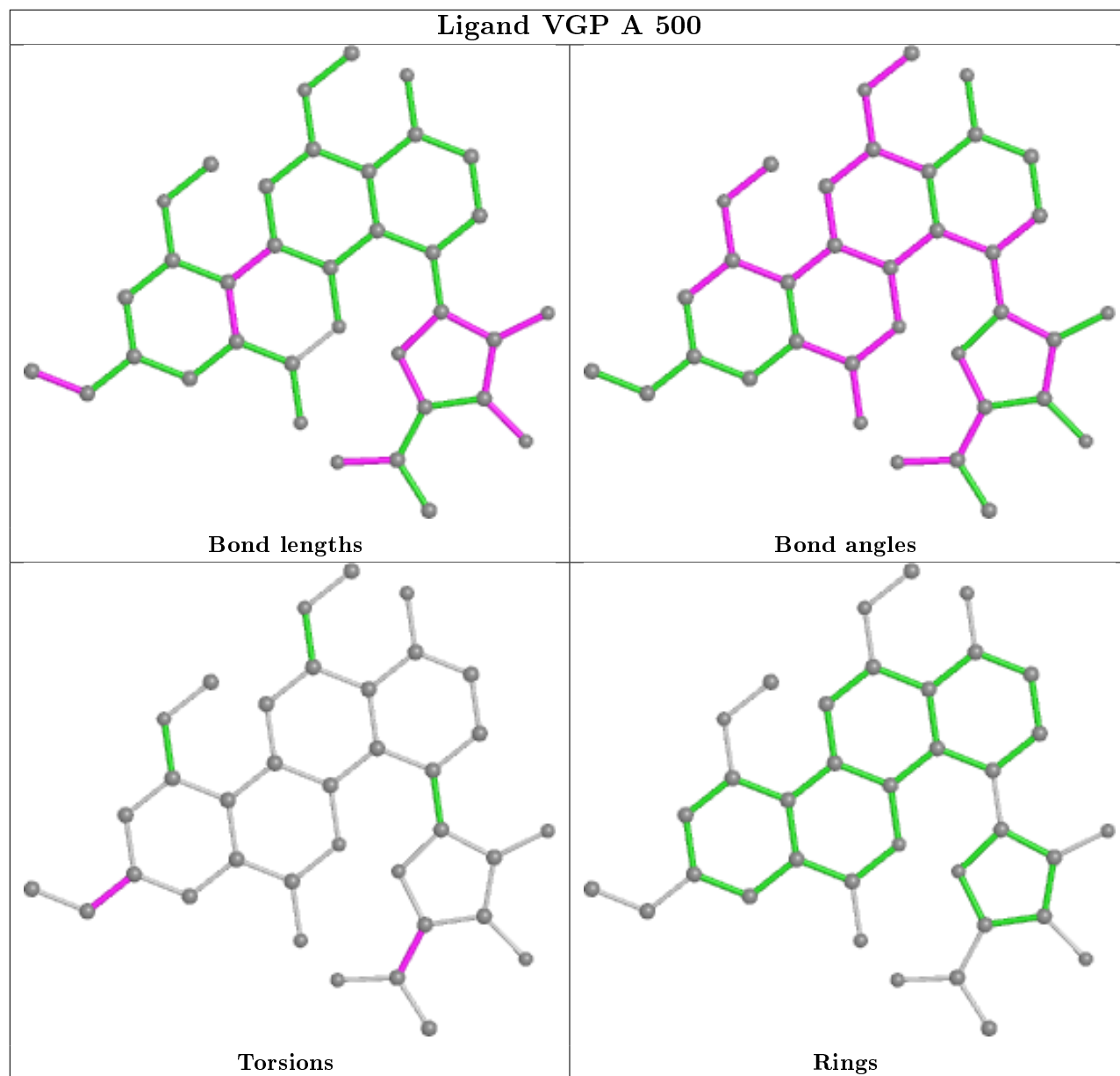
Mol	Chain	Res	Type	Clashes	Symm-Clashes
2	D	499	FAD	5	0
2	C	499	FAD	10	0
3	B	500	VGP	8	0

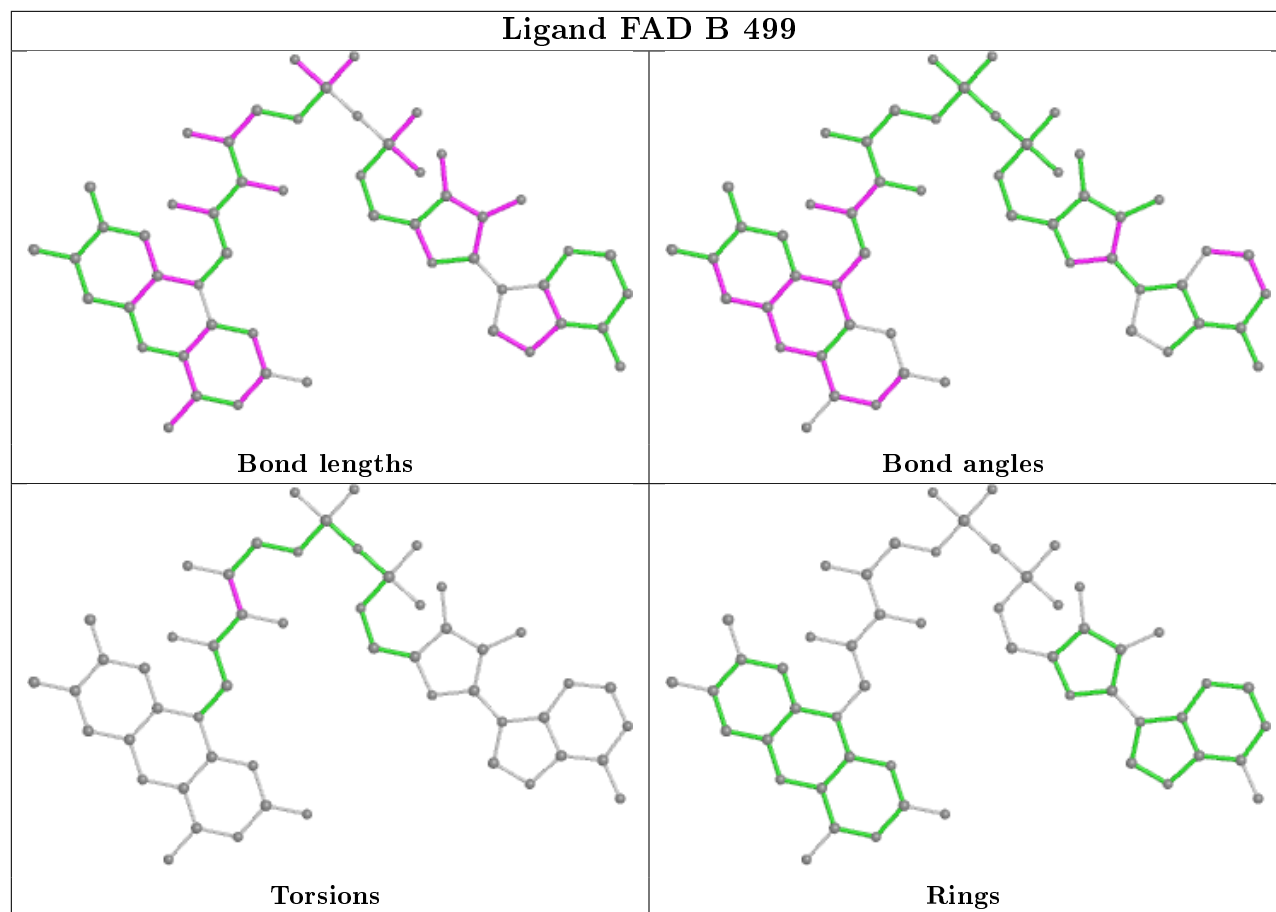
The following is a two-dimensional graphical depiction of Mogul quality analysis of bond lengths, bond angles, torsion angles, and ring geometry for all instances of the Ligand of Interest. In addition, ligands with molecular weight > 250 and outliers as shown on the validation Tables will also be included. For torsion angles, if less than 5% of the Mogul distribution of torsion angles is within 10 degrees of the torsion angle in question, then that torsion angle is considered an outlier. Any bond that is central to one or more torsion angles identified as an outlier by Mogul will be highlighted in the graph. For rings, the root-mean-square deviation (RMSD) between the ring in question and similar rings identified by Mogul is calculated over all ring torsion angles. If the average RMSD is greater than 60 degrees and the minimal RMSD between the ring in question and any Mogul-identified rings is also greater than 60 degrees, then that ring is considered an outlier. The outliers are highlighted in purple. The color gray indicates Mogul did not find sufficient equivalents in the CSD to analyse the geometry.

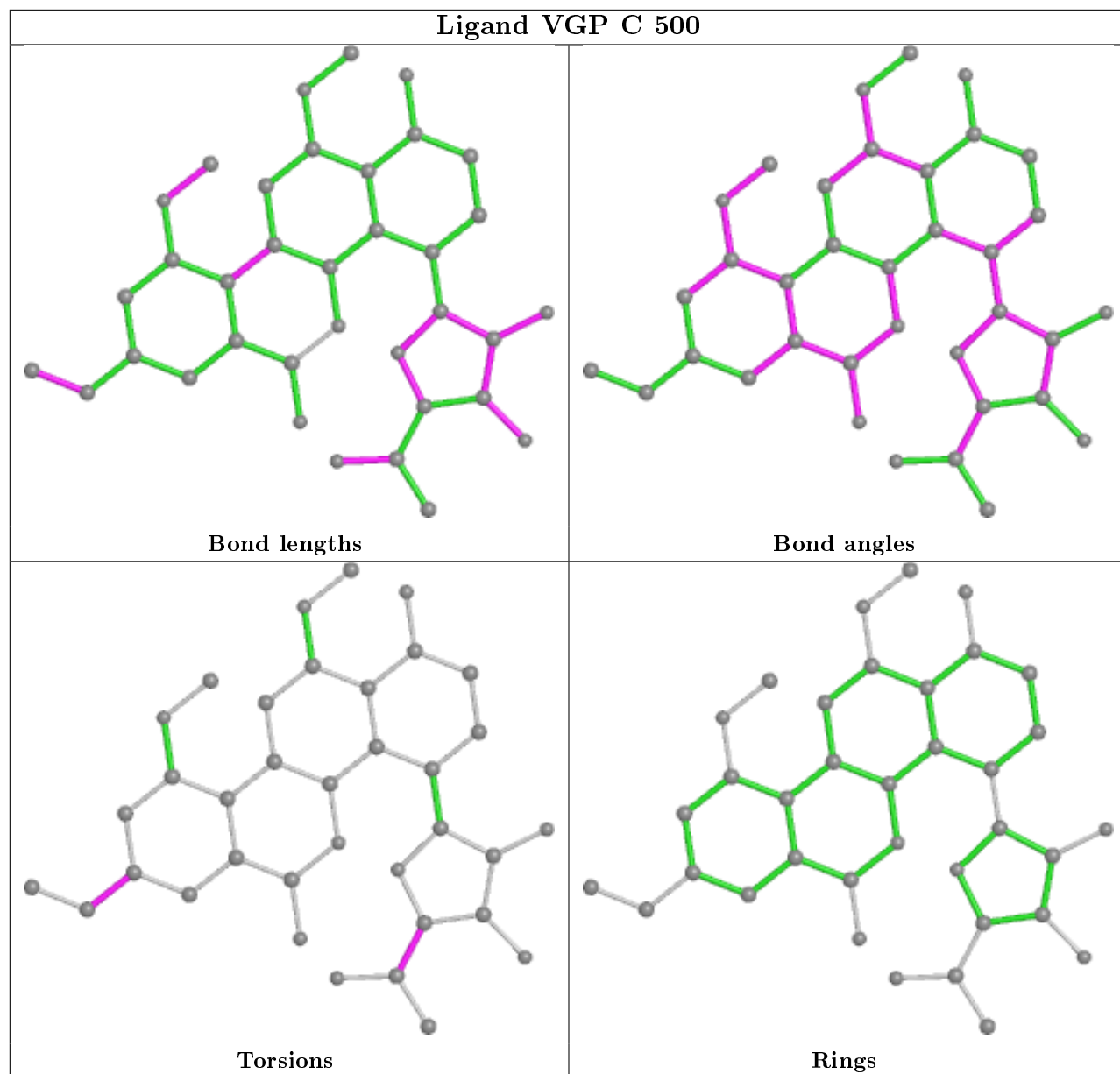


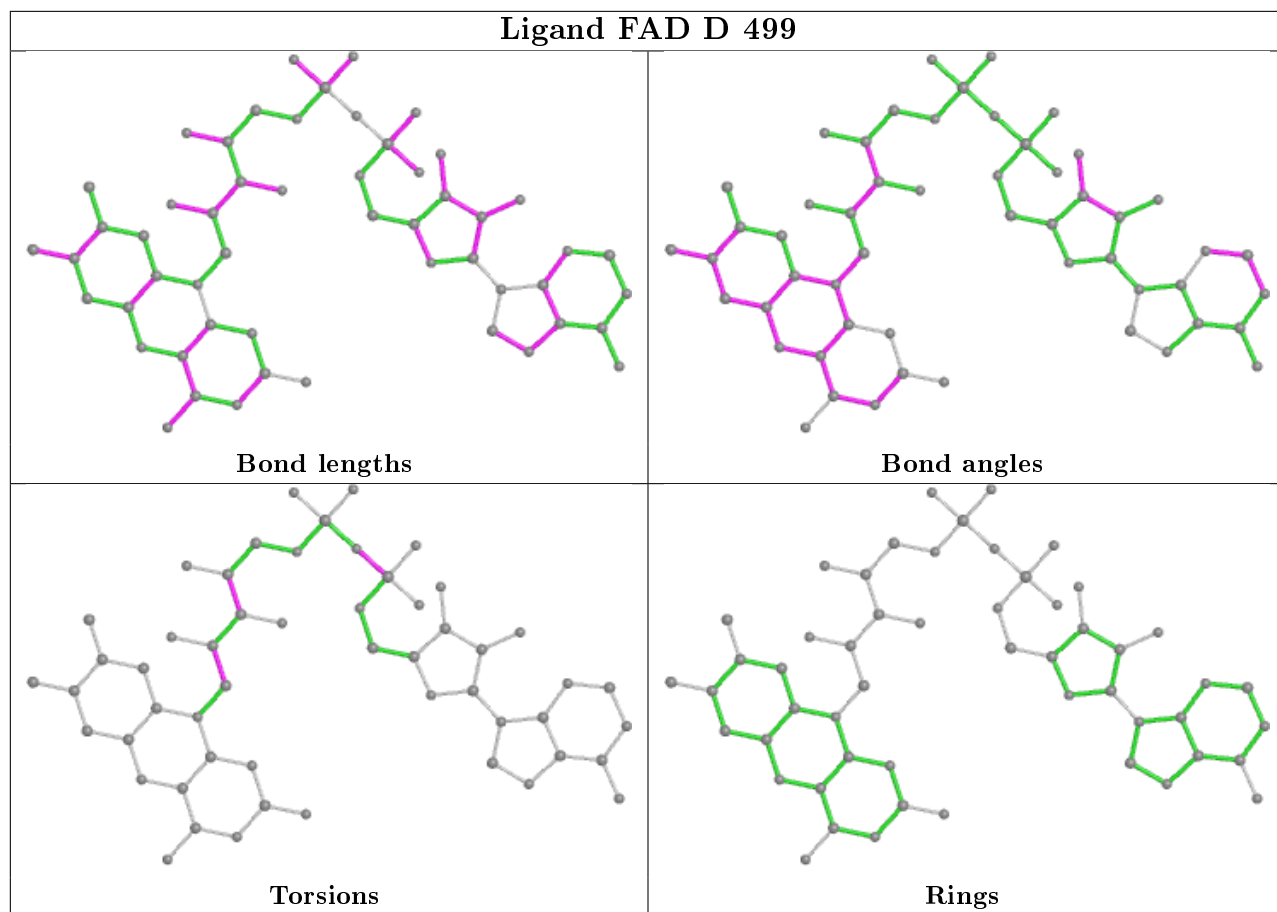


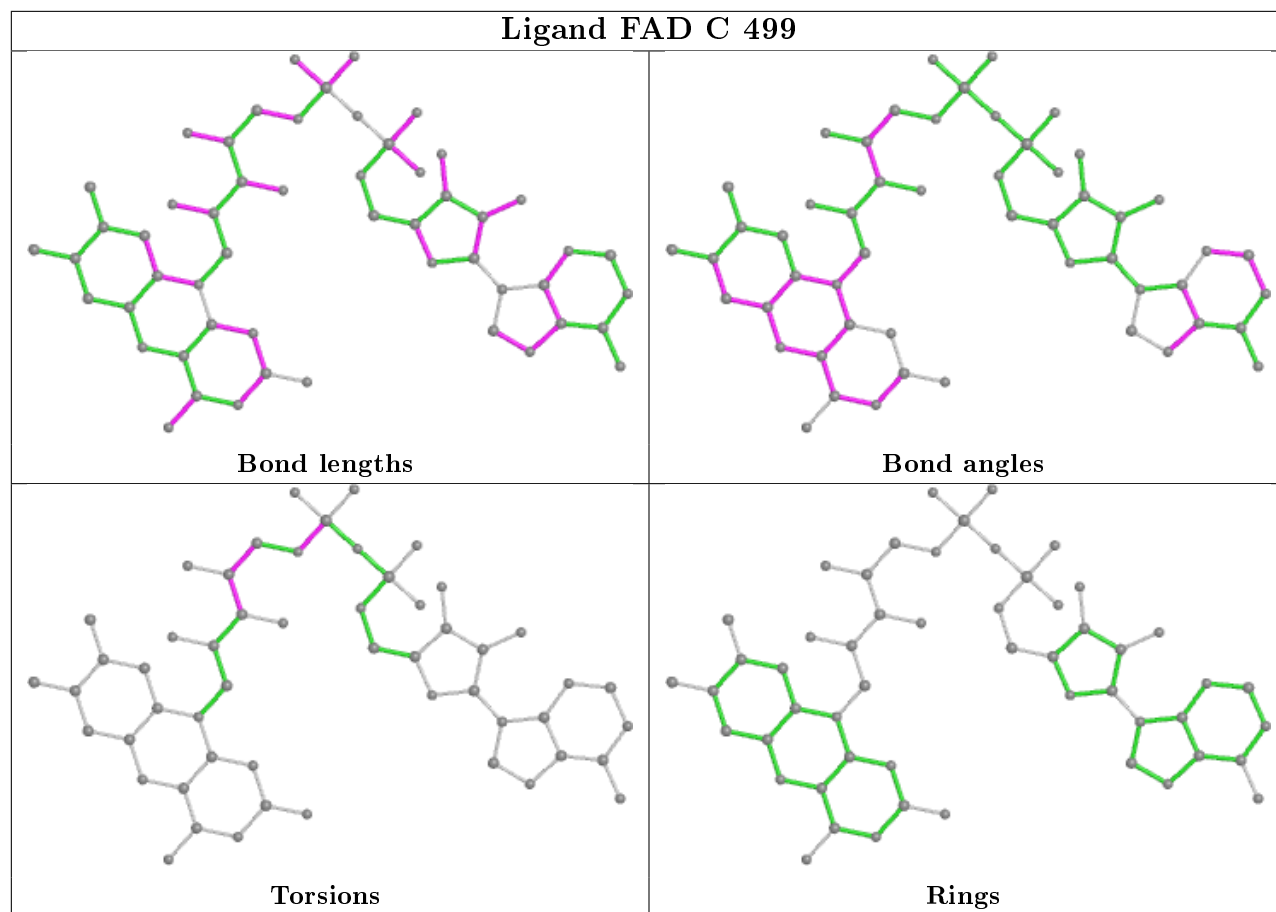


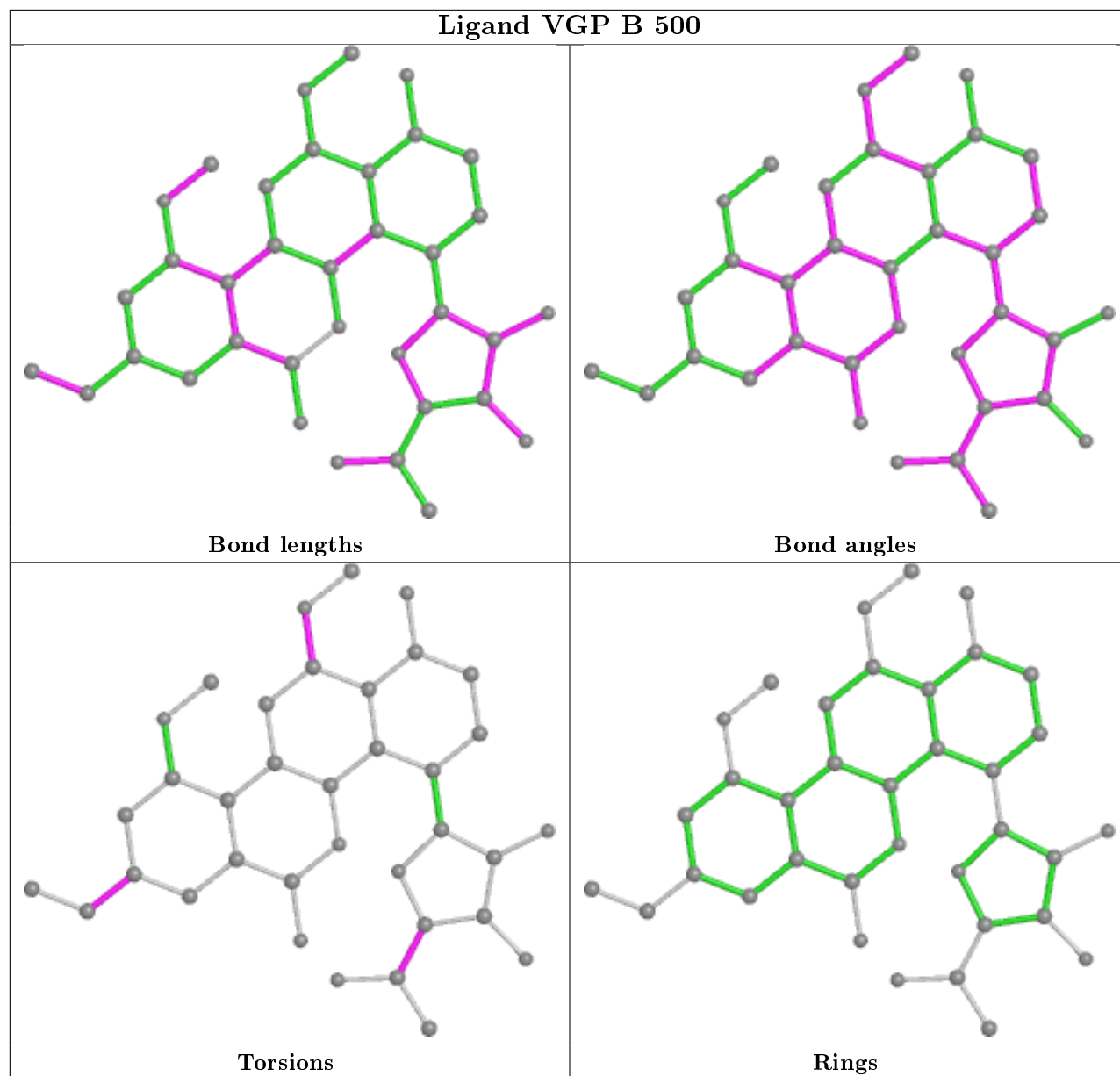












## 5.7 Other polymers [\(i\)](#)

There are no such residues in this entry.

## 5.8 Polymer linkage issues [\(i\)](#)

There are no chain breaks in this entry.

## 6 Fit of model and data

### 6.1 Protein, DNA and RNA chains

In the following table, the column labelled ‘#RSRZ> 2’ contains the number (and percentage) of RSRZ outliers, followed by percent RSRZ outliers for the chain as percentile scores relative to all X-ray entries and entries of similar resolution. The OWAB column contains the minimum, median, 95<sup>th</sup> percentile and maximum values of the occupancy-weighted average B-factor per residue. The column labelled ‘Q< 0.9’ lists the number of (and percentage) of residues with an average occupancy less than 0.9.

Mol	Chain	Analysed	<RSRZ>	#RSRZ>2	OWAB(Å <sup>2</sup> )	Q<0.9
1	A	492/501 (98%)	-0.17	5 (1%) 82 86	15, 36, 67, 100	0
1	B	493/501 (98%)	-0.29	5 (1%) 82 86	17, 34, 64, 107	0
1	C	493/501 (98%)	-0.34	7 (1%) 75 80	20, 35, 65, 109	0
1	D	491/501 (98%)	-0.08	14 (2%) 51 59	20, 37, 67, 102	0
All	All	1969/2004 (98%)	-0.22	31 (1%) 72 78	15, 35, 66, 109	0

All (31) RSRZ outliers are listed below:

Mol	Chain	Res	Type	RSRZ
1	B	498	LEU	4.5
1	C	334	VAL	4.1
1	A	288	VAL	3.7
1	D	165	ARG	3.6
1	C	92	ALA	3.3
1	C	498	LEU	3.3
1	D	161	VAL	3.2
1	B	331	CYS	3.1
1	D	51	ALA	3.0
1	C	331	CYS	2.9
1	A	302	LEU	2.8
1	B	6	PRO	2.7
1	D	175	ASP	2.7
1	D	53	THR	2.7
1	D	162	ASP	2.6
1	A	289	ASP	2.6
1	D	164	SER	2.5
1	D	166	THR	2.4
1	A	286	ALA	2.4
1	D	163	GLU	2.4
1	B	92	ALA	2.4

*Continued on next page...*

*Continued from previous page...*

Mol	Chain	Res	Type	RSRZ
1	D	292	GLY	2.4
1	C	328	GLN	2.4
1	D	487	LEU	2.3
1	D	105	VAL	2.2
1	B	328	GLN	2.2
1	C	95	ALA	2.2
1	D	48	LEU	2.2
1	D	482	ARG	2.1
1	C	329	ALA	2.1
1	A	259	SER	2.1

## 6.2 Non-standard residues in protein, DNA, RNA chains [i](#)

There are no non-standard protein/DNA/RNA residues in this entry.

## 6.3 Carbohydrates [i](#)

There are no carbohydrates in this entry.

## 6.4 Ligands [i](#)

In the following table, the Atoms column lists the number of modelled atoms in the group and the number defined in the chemical component dictionary. The B-factors column lists the minimum, median, 95<sup>th</sup> percentile and maximum values of B factors of atoms in the group. The column labelled 'Q< 0.9' lists the number of atoms with occupancy less than 0.9.

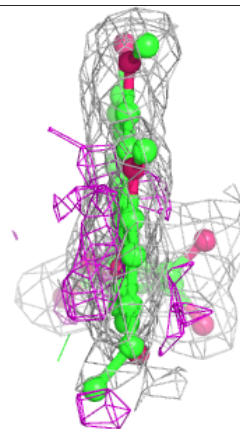
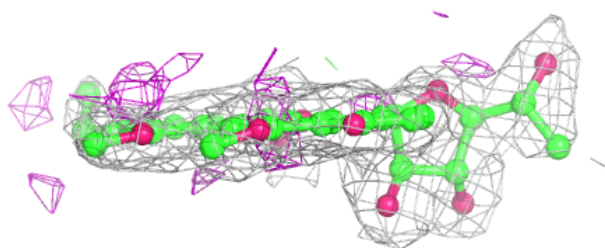
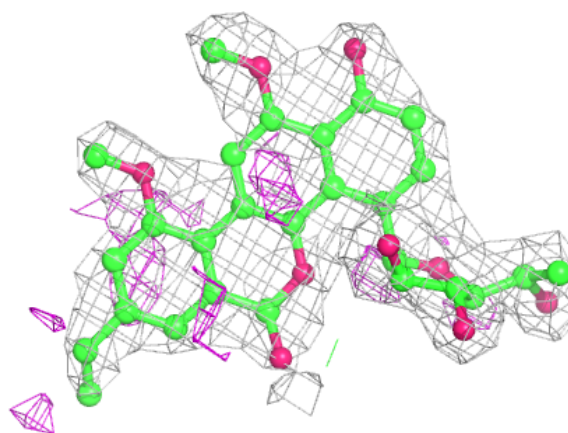
Mol	Type	Chain	Res	Atoms	RSCC	RSR	B-factors(Å <sup>2</sup> )	Q<0.9
3	VGP	A	500	36/36	0.86	0.19	36,65,84,91	0
3	VGP	B	500	36/36	0.87	0.20	38,66,94,100	0
3	VGP	C	500	36/36	0.89	0.16	27,49,68,75	0
3	VGP	D	500	36/36	0.91	0.18	18,57,70,80	0
2	FAD	D	499	53/53	0.96	0.11	9,16,19,20	0
2	FAD	B	499	53/53	0.97	0.09	8,13,15,16	0
2	FAD	C	499	53/53	0.97	0.09	7,12,16,17	0
2	FAD	A	499	53/53	0.97	0.09	8,12,15,17	0

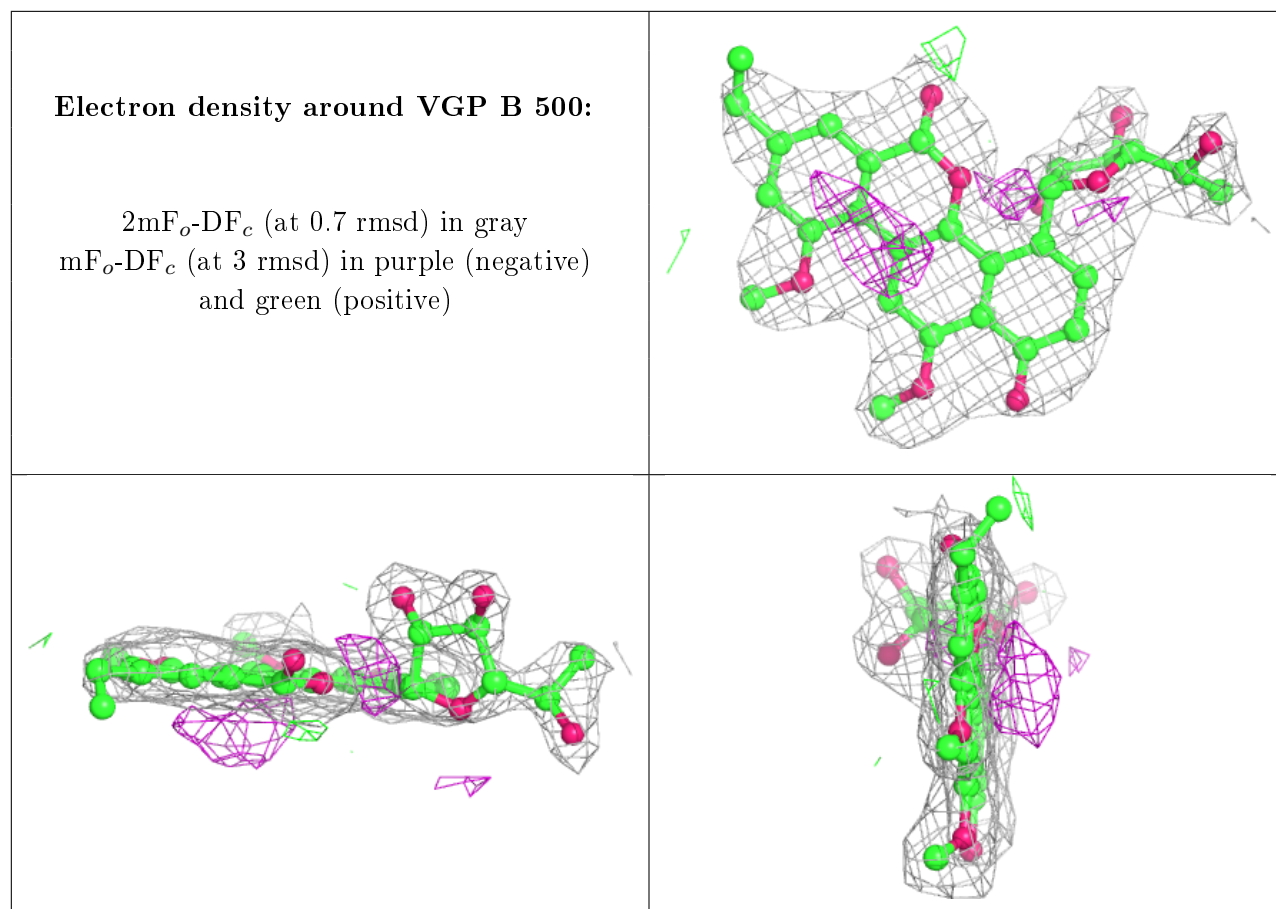
The following is a graphical depiction of the model fit to experimental electron density of all instances of the Ligand of Interest. In addition, ligands with molecular weight > 250 and outliers as shown on the geometry validation Tables will also be included. Each fit is shown from different orientation to approximate a three-dimensional view.



**Electron density around VGP A 500:**

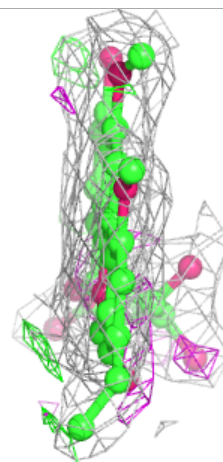
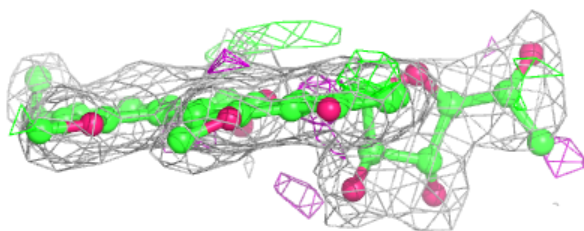
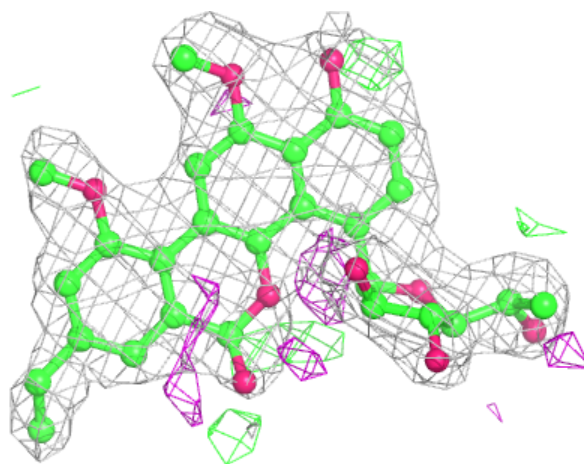
$2mF_o-DF_c$  (at 0.7 rmsd) in gray  
 $mF_o-DF_c$  (at 3 rmsd) in purple (negative)  
and green (positive)





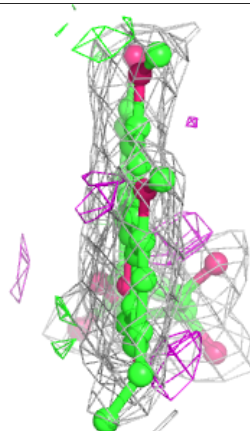
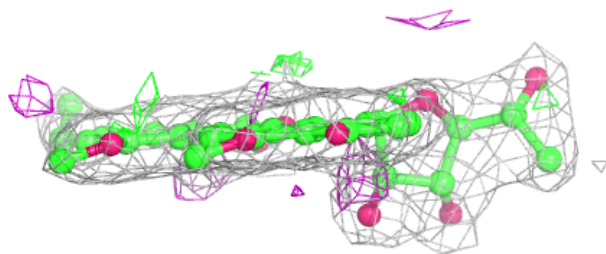
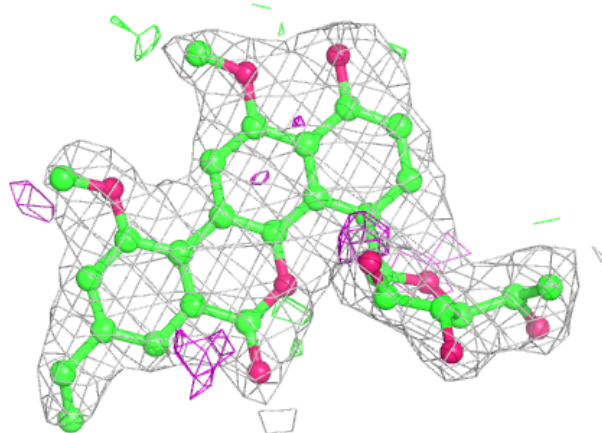
**Electron density around VGP C 500:**

$2mF_o-DF_c$  (at 0.7 rmsd) in gray  
 $mF_o-DF_c$  (at 3 rmsd) in purple (negative)  
and green (positive)

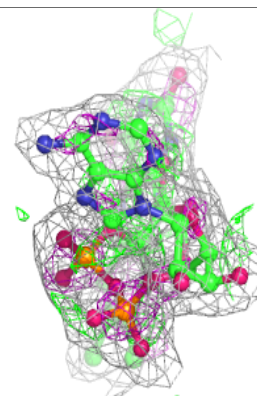
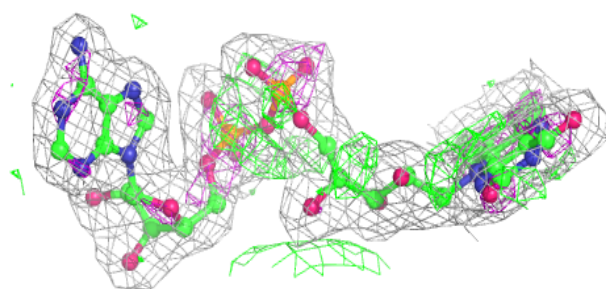
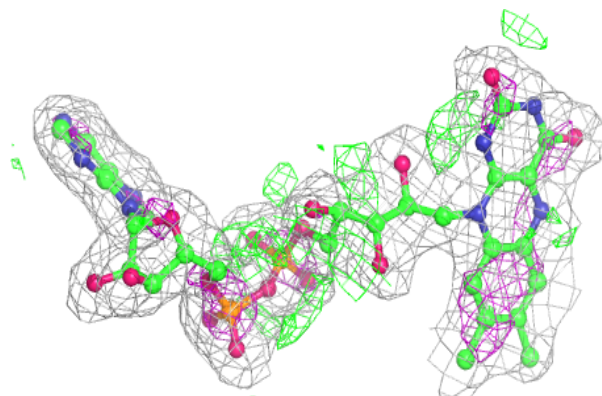


**Electron density around VGP D 500:**

$2mF_o-DF_c$  (at 0.7 rmsd) in gray  
 $mF_o-DF_c$  (at 3 rmsd) in purple (negative)  
and green (positive)

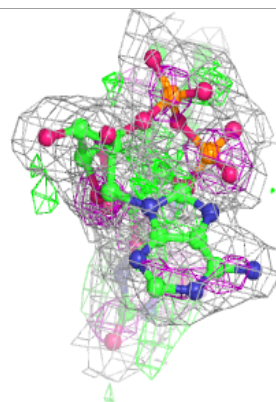
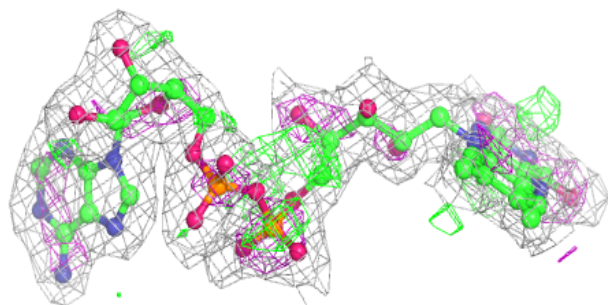
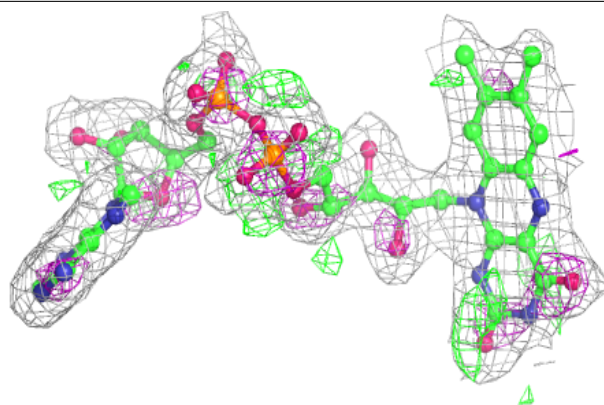
**Electron density around FAD D 499:**

$2mF_o-DF_c$  (at 0.7 rmsd) in gray  
 $mF_o-DF_c$  (at 3 rmsd) in purple (negative)  
and green (positive)

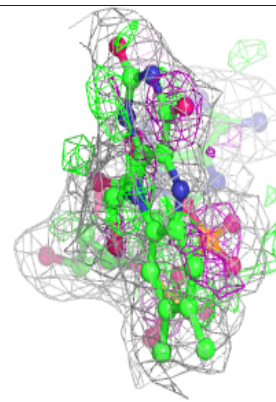
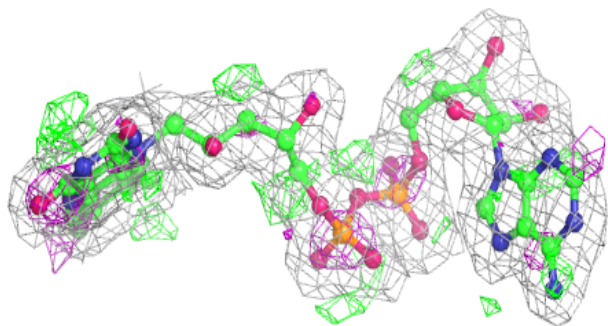
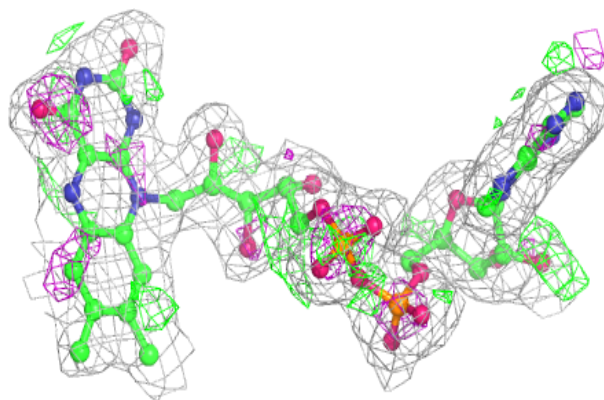


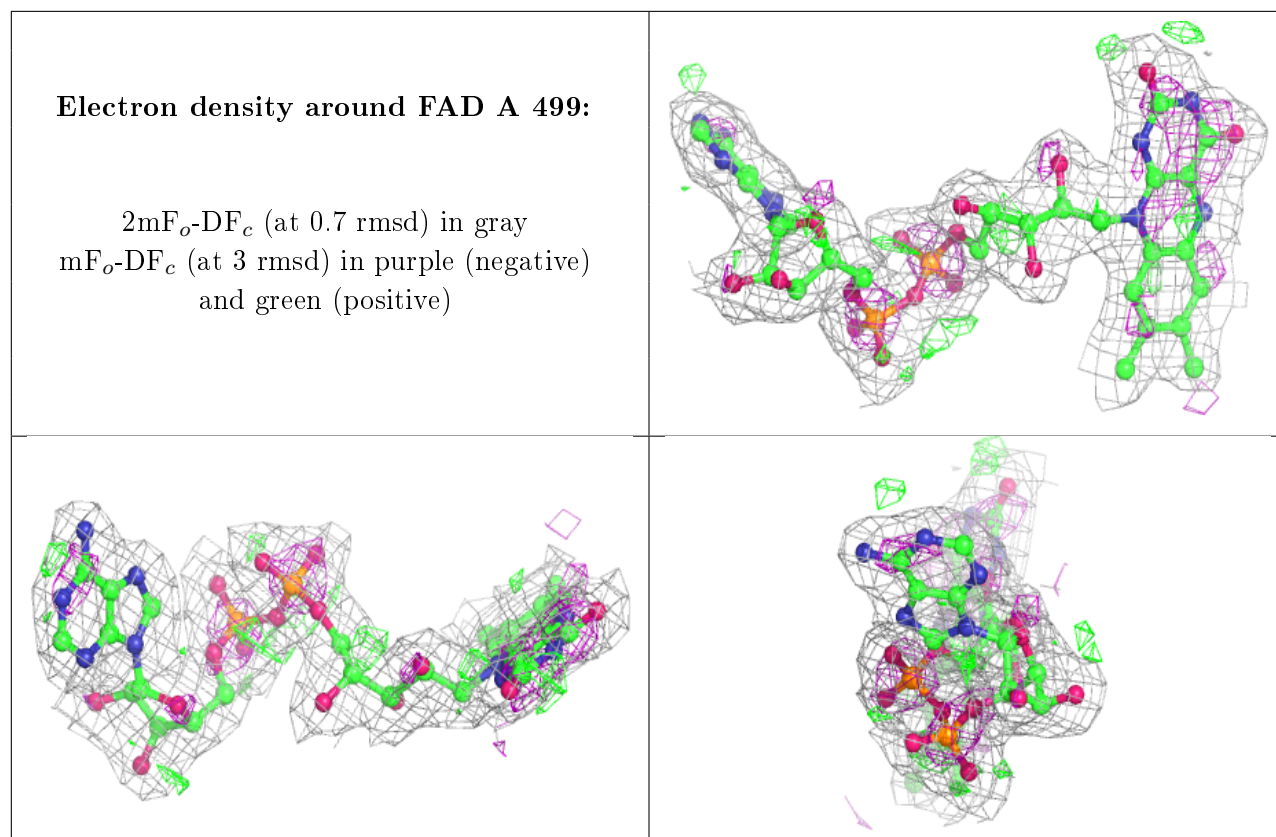
**Electron density around FAD B 499:**

$2mF_o-DF_c$  (at 0.7 rmsd) in gray  
 $mF_o-DF_c$  (at 3 rmsd) in purple (negative)  
and green (positive)

**Electron density around FAD C 499:**

$2mF_o-DF_c$  (at 0.7 rmsd) in gray  
 $mF_o-DF_c$  (at 3 rmsd) in purple (negative)  
and green (positive)





## 6.5 Other polymers [i](#)

There are no such residues in this entry.