



# Full wwPDB X-ray Structure Validation Report ⓘ

Feb 14, 2024 – 03:57 AM EST

PDB ID : 3LJR  
Title : GLUTATHIONE TRANSFERASE (THETA CLASS) FROM HUMAN  
IN COMPLEX WITH THE GLUTATHIONE CONJUGATE OF 1-  
MENAPHTHYL SULFATE  
Authors : Rossjohn, J.; Mckinstry, W.J.; Oakley, A.J.; Verger, D.; Flanagan, J.; Chel-  
vanayagam, G.; Tan, K.L.; Board, P.G.; Parker, M.W.  
Deposited on : 1998-03-08  
Resolution : 3.30 Å(reported)

This is a Full wwPDB X-ray Structure Validation Report for a publicly released PDB entry.

We welcome your comments at [validation@mail.wwpdb.org](mailto:validation@mail.wwpdb.org)

A user guide is available at

<https://www.wwpdb.org/validation/2017/XrayValidationReportHelp>

with specific help available everywhere you see the ⓘ symbol.

The types of validation reports are described at

<http://www.wwpdb.org/validation/2017/FAQs#types>.

---

The following versions of software and data (see [references ⓘ](#)) were used in the production of this report:

MolProbity : 4.02b-467  
Mogul : 1.8.5 (274361), CSD as541be (2020)  
Xtrriage (Phenix) : **NOT EXECUTED**  
EDS : **NOT EXECUTED**  
buster-report : 1.1.7 (2018)  
Percentile statistics : 20191225.v01 (using entries in the PDB archive December 25th 2019)  
Ideal geometry (proteins) : Engh & Huber (2001)  
Ideal geometry (DNA, RNA) : Parkinson et al. (1996)  
Validation Pipeline (wwPDB-VP) : 2.36

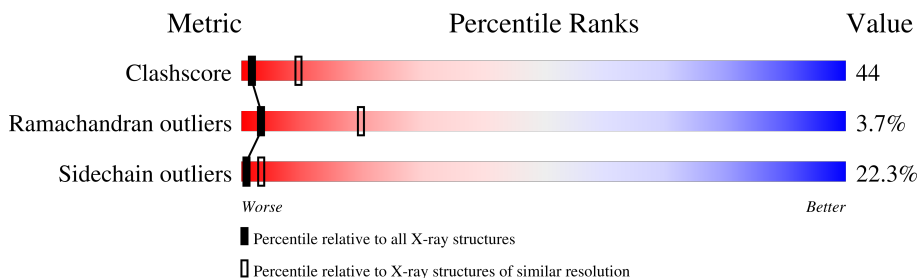
# 1 Overall quality at a glance

The following experimental techniques were used to determine the structure:

*X-RAY DIFFRACTION*

The reported resolution of this entry is 3.30 Å.

Percentile scores (ranging between 0-100) for global validation metrics of the entry are shown in the following graphic. The table shows the number of entries on which the scores are based.



Metric	Whole archive (#Entries)	Similar resolution (#Entries, resolution range(Å))
Clashscore	141614	1205 (3.34-3.26)
Ramachandran outliers	138981	1183 (3.34-3.26)
Sidechain outliers	138945	1182 (3.34-3.26)

The table below summarises the geometric issues observed across the polymeric chains and their fit to the electron density. The red, orange, yellow and green segments of the lower bar indicate the fraction of residues that contain outliers for  $\geq 3$ , 2, 1 and 0 types of geometric quality criteria respectively. A grey segment represents the fraction of residues that are not modelled. The numeric value for each fraction is indicated below the corresponding segment, with a dot representing fractions  $\leq 5\%$ .

Note EDS was not executed.

Mol	Chain	Length	Quality of chain
1	A	244	
1	B	244	

The following table lists non-polymeric compounds, carbohydrate monomers and non-standard residues in protein, DNA, RNA chains that are outliers for geometric or electron-density-fit criteria:

Mol	Type	Chain	Res	Chirality	Geometry	Clashes	Electron density
2	SO4	B	302	-	-	X	-

## 2 Entry composition [i](#)

There are 4 unique types of molecules in this entry. The entry contains 3954 atoms, of which 0 are hydrogens and 0 are deuteriums.

In the tables below, the ZeroOcc column contains the number of atoms modelled with zero occupancy, the AltConf column contains the number of residues with at least one atom in alternate conformation and the Trace column contains the number of residues modelled with at most 2 atoms.

- Molecule 1 is a protein called GLUTATHIONE S-TRANSFERASE.

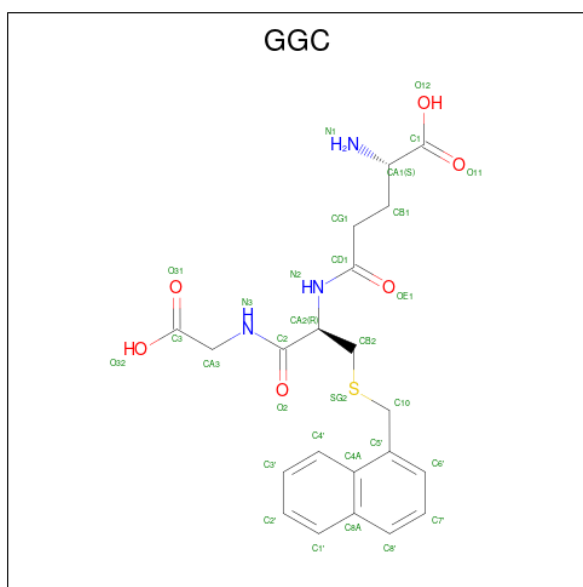
Mol	Chain	Residues	Atoms					ZeroOcc	AltConf	Trace
			Total	C	N	O	S			
1	A	244	Total 1940	C 1253	N 331	O 348	S 8	0	0	0
1	B	244	Total 1940	C 1253	N 331	O 348	S 8	0	0	0

- Molecule 2 is SULFATE ION (three-letter code: SO4) (formula: O<sub>4</sub>S).



Mol	Chain	Residues	Atoms			ZeroOcc	AltConf
			Total	O	S		
2	A	1	Total 5	O 4	S 1	0	0
2	B	1	Total 5	O 4	S 1	0	0

- Molecule 3 is 1-MENAPHTHYL GLUTATHIONE CONJUGATE (three-letter code: GGC) (formula: C<sub>21</sub>H<sub>25</sub>N<sub>3</sub>O<sub>6</sub>S).



Mol	Chain	Residues	Atoms					ZeroOcc	AltConf
			Total	C	N	O	S		
3	A	1	31	21	3	6	1	0	0
3	B	1	31	21	3	6	1	0	0

- Molecule 4 is water.

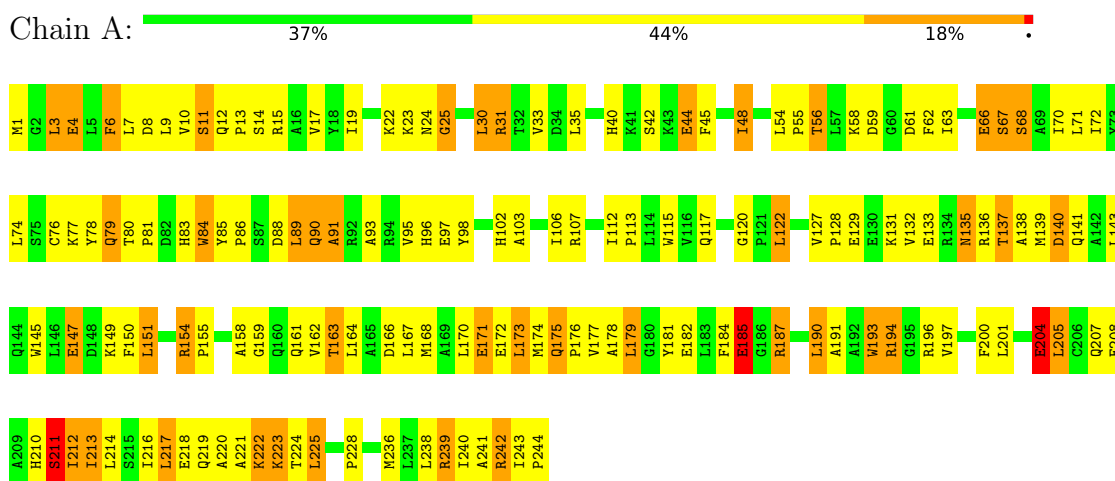
Mol	Chain	Residues	Atoms		ZeroOcc	AltConf
			Total	O		
4	A	1	1	1	0	0
4	B	1	1	1	0	0

### 3 Residue-property plots [i](#)

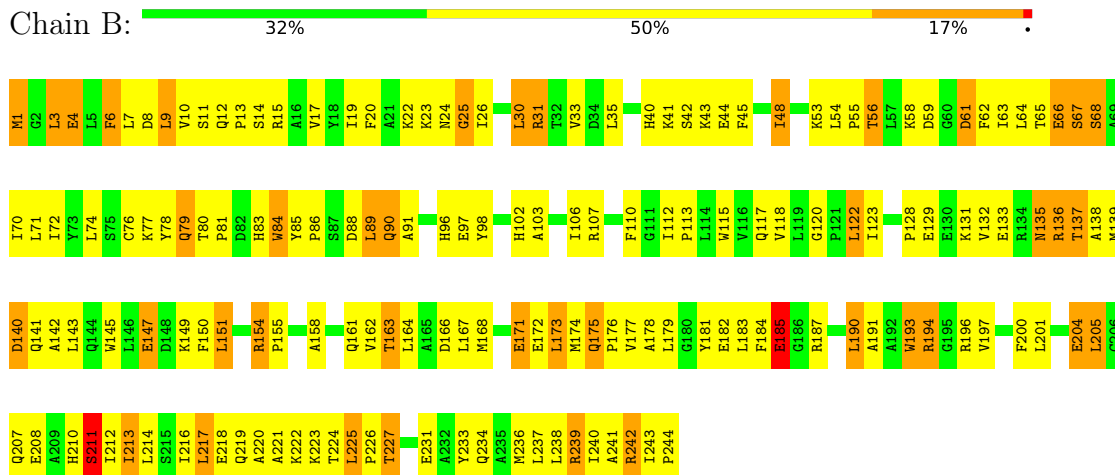
These plots are drawn for all protein, RNA, DNA and oligosaccharide chains in the entry. The first graphic for a chain summarises the proportions of the various outlier classes displayed in the second graphic. The second graphic shows the sequence view annotated by issues in geometry. Residues are color-coded according to the number of geometric quality criteria for which they contain at least one outlier: green = 0, yellow = 1, orange = 2 and red = 3 or more. Stretches of 2 or more consecutive residues without any outlier are shown as a green connector. Residues present in the sample, but not in the model, are shown in grey.

Note EDS was not executed.

- Molecule 1: GLUTATHIONE S-TRANSFERASE



- Molecule 1: GLUTATHIONE S-TRANSFERASE



## 4 Data and refinement statistics

Xtrriage (Phenix) and EDS were not executed - this section is therefore incomplete.

Property	Value	Source
Space group	P 31 2 1	Depositor
Cell constants a, b, c, $\alpha$ , $\beta$ , $\gamma$	94.06Å 94.06Å 120.80Å 90.00° 90.00° 120.00°	Depositor
Resolution (Å)	15.00 – 3.30	Depositor
% Data completeness (in resolution range)	88.8 (15.00-3.30)	Depositor
$R_{merge}$	(Not available)	Depositor
$R_{sym}$	0.14	Depositor
Refinement program	X-PLOR 3.8	Depositor
R, $R_{free}$	0.238 , 0.335	Depositor
Estimated twinning fraction	No twinning to report.	Xtrriage
Total number of atoms	3954	wwPDB-VP
Average B, all atoms (Å <sup>2</sup> )	35.0	wwPDB-VP

## 5 Model quality

### 5.1 Standard geometry

Bond lengths and bond angles in the following residue types are not validated in this section: SO4, GGC

The Z score for a bond length (or angle) is the number of standard deviations the observed value is removed from the expected value. A bond length (or angle) with  $|Z| > 5$  is considered an outlier worth inspection. RMSZ is the root-mean-square of all Z scores of the bond lengths (or angles).

Mol	Chain	Bond lengths		Bond angles	
		RMSZ	# Z  >5	RMSZ	# Z  >5
1	A	0.45	0/1985	0.66	0/2692
1	B	0.43	0/1985	0.66	0/2692
All	All	0.44	0/3970	0.66	0/5384

There are no bond length outliers.

There are no bond angle outliers.

There are no chirality outliers.

There are no planarity outliers.

### 5.2 Too-close contacts

In the following table, the Non-H and H(model) columns list the number of non-hydrogen atoms and hydrogen atoms in the chain respectively. The H(added) column lists the number of hydrogen atoms added and optimized by MolProbity. The Clashes column lists the number of clashes within the asymmetric unit, whereas Symm-Clashes lists symmetry-related clashes.

Mol	Chain	Non-H	H(model)	H(added)	Clashes	Symm-Clashes
1	A	1940	0	1978	177	0
1	B	1940	0	1978	186	0
2	A	5	0	0	1	0
2	B	5	0	0	2	0
3	A	31	0	23	2	0
3	B	31	0	23	2	0
4	A	1	0	0	2	0
4	B	1	0	0	0	0
All	All	3954	0	4002	348	0

The all-atom clashscore is defined as the number of clashes found per 1000 atoms (including hydrogen atoms). The all-atom clashscore for this structure is 44.

All (348) close contacts within the same asymmetric unit are listed below, sorted by their clash magnitude.

Atom-1	Atom-2	Interatomic distance (Å)	Clash overlap (Å)
1:A:12:GLN:HG2	1:A:13:PRO:HD3	1.30	1.14
1:B:12:GLN:HG2	1:B:13:PRO:HD3	1.37	1.06
1:B:106:ILE:HG22	1:B:172:GLU:HG2	1.45	0.97
1:A:106:ILE:HG22	1:A:172:GLU:HG2	1.47	0.96
1:B:143:LEU:HD21	1:B:173:LEU:HD21	1.48	0.96
1:A:220:ALA:HA	1:A:225:LEU:CD2	1.99	0.93
1:A:143:LEU:HD21	1:A:173:LEU:HD21	1.54	0.89
1:B:174:MET:HG3	1:B:210:HIS:NE2	1.90	0.86
1:B:145:TRP:O	1:B:149:LYS:HB3	1.75	0.85
1:A:131:LYS:HD3	1:A:243:ILE:HG22	1.58	0.85
1:A:133:GLU:HA	1:A:136:ARG:HD2	1.60	0.84
1:A:182:GLU:HB3	1:A:185:GLU:HG2	1.61	0.83
1:B:133:GLU:HA	1:B:136:ARG:HD2	1.59	0.82
1:A:174:MET:HG3	1:A:210:HIS:NE2	1.96	0.81
1:B:106:ILE:CG2	1:B:172:GLU:HG2	2.11	0.80
1:B:219:GLN:HB3	1:B:224:THR:HB	1.65	0.79
1:A:90:GLN:HG3	1:B:62:PHE:CE1	2.18	0.79
1:B:147:GLU:HG3	1:B:190:LEU:HG	1.65	0.78
1:B:182:GLU:HB3	1:B:185:GLU:HG2	1.64	0.78
1:A:158:ALA:HB3	1:A:163:THR:HG21	1.64	0.78
1:B:131:LYS:HD3	1:B:243:ILE:HG22	1.66	0.78
1:B:158:ALA:HB3	1:B:163:THR:HG21	1.66	0.77
1:B:193:TRP:O	1:B:197:VAL:HG23	1.83	0.77
1:A:106:ILE:CG2	1:A:172:GLU:HG2	2.15	0.76
1:B:213:ILE:O	1:B:216:ILE:HG22	1.86	0.76
1:A:12:GLN:HG2	1:A:13:PRO:CD	2.13	0.75
1:B:224:THR:HG22	1:B:224:THR:O	1.87	0.75
1:A:145:TRP:O	1:A:149:LYS:HB3	1.87	0.74
1:A:147:GLU:HG3	1:A:190:LEU:HG	1.68	0.74
1:B:177:VAL:HA	1:B:181:TYR:O	1.90	0.72
1:B:140:ASP:HA	1:B:143:LEU:HB2	1.72	0.72
1:B:147:GLU:CG	1:B:190:LEU:HG	2.20	0.72
1:A:90:GLN:HG3	1:B:62:PHE:CD1	2.24	0.72
1:B:1:MET:HE2	1:B:3:LEU:HB3	1.71	0.71
1:B:35:LEU:HG	1:B:54:LEU:HD12	1.74	0.69
1:A:147:GLU:CG	1:A:190:LEU:HG	2.22	0.69
1:B:15:ARG:HB2	1:B:171:GLU:HG3	1.75	0.69
1:A:177:VAL:HA	1:A:181:TYR:O	1.93	0.69
1:A:224:THR:HG22	1:A:224:THR:O	1.92	0.68
1:A:213:ILE:O	1:A:216:ILE:HG22	1.93	0.68

*Continued on next page...*



*Continued from previous page...*

Atom-1	Atom-2	Interatomic distance (Å)	Clash overlap (Å)
1:A:210:HIS:O	1:A:212:ILE:N	2.26	0.68
1:A:220:ALA:HA	1:A:225:LEU:HD22	1.73	0.68
1:B:143:LEU:CD2	1:B:173:LEU:HD21	2.22	0.68
1:B:213:ILE:HD13	1:B:214:LEU:N	2.09	0.68
1:B:220:ALA:HA	1:B:225:LEU:HD22	1.75	0.68
1:B:33:VAL:HB	1:B:54:LEU:HD11	1.74	0.68
1:A:15:ARG:HB2	1:A:171:GLU:HG3	1.75	0.68
1:A:143:LEU:CD2	1:A:173:LEU:HD21	2.24	0.68
1:A:62:PHE:CE1	1:B:90:GLN:HG3	2.29	0.68
1:A:35:LEU:HG	1:A:54:LEU:HD12	1.74	0.67
1:A:89:LEU:HD21	1:B:76:CYS:HB3	1.78	0.66
1:B:12:GLN:HG2	1:B:13:PRO:CD	2.20	0.66
1:A:149:LYS:HD2	1:A:149:LYS:O	1.95	0.66
1:B:98:TYR:CE2	1:B:102:HIS:HB2	2.30	0.66
1:A:4:GLU:OE1	1:A:31:ARG:HD2	1.96	0.66
1:B:210:HIS:O	1:B:212:ILE:N	2.30	0.65
1:B:225:LEU:HD12	1:B:226:PRO:HD2	1.78	0.65
1:A:33:VAL:HB	1:A:54:LEU:HD11	1.79	0.65
1:A:217:LEU:O	1:A:220:ALA:HB3	1.98	0.64
1:B:219:GLN:CB	1:B:224:THR:HB	2.27	0.64
1:B:4:GLU:OE1	1:B:31:ARG:HD2	1.96	0.64
1:A:88:ASP:HB3	1:A:91:ALA:CB	2.27	0.64
1:B:155:PRO:O	1:B:196:ARG:NH1	2.30	0.64
1:B:107:ARG:HG3	1:B:107:ARG:HH11	1.63	0.64
1:B:22:LYS:O	1:B:25:GLY:N	2.26	0.64
1:B:213:ILE:HD13	1:B:214:LEU:H	1.63	0.64
1:A:133:GLU:O	1:A:136:ARG:HG2	1.98	0.63
1:B:143:LEU:HD21	1:B:173:LEU:CD2	2.26	0.62
1:A:158:ALA:HB3	1:A:163:THR:CG2	2.30	0.62
1:A:7:LEU:H	1:A:7:LEU:HD23	1.64	0.62
1:A:22:LYS:O	1:A:25:GLY:N	2.31	0.62
1:A:10:VAL:HA	1:A:213:ILE:HG22	1.82	0.62
1:A:113:PRO:HB3	1:A:181:TYR:CE1	2.35	0.62
1:B:3:LEU:HD23	1:B:3:LEU:H	1.64	0.62
1:A:12:GLN:CG	1:A:13:PRO:HD3	2.21	0.61
1:A:211:SER:OG	1:A:212:ILE:N	2.31	0.61
1:B:10:VAL:HA	1:B:213:ILE:HG22	1.82	0.61
1:B:1:MET:CE	1:B:3:LEU:HB3	2.29	0.61
1:A:143:LEU:HD21	1:A:173:LEU:CD2	2.29	0.61
1:A:175:GLN:HB3	1:A:176:PRO:HD3	1.83	0.61
1:A:76:CYS:HB3	1:B:89:LEU:HD21	1.83	0.61

*Continued on next page...*

*Continued from previous page...*

Atom-1	Atom-2	Interatomic distance (Å)	Clash overlap (Å)
1:A:6:PHE:HA	1:A:31:ARG:O	2.01	0.61
1:A:7:LEU:HD23	1:A:7:LEU:N	2.16	0.61
1:A:120:GLY:HA2	1:A:240:ILE:HD11	1.81	0.61
1:A:221:ALA:C	1:A:223:LYS:H	2.04	0.60
1:A:107:ARG:HH11	1:A:107:ARG:HG3	1.67	0.60
1:A:187:ARG:HB3	1:A:190:LEU:HB2	1.82	0.60
1:A:88:ASP:HB3	1:A:91:ALA:HB2	1.84	0.60
1:B:88:ASP:HB3	1:B:91:ALA:CB	2.32	0.60
1:A:140:ASP:HA	1:A:143:LEU:HB2	1.82	0.60
1:B:211:SER:OG	1:B:212:ILE:N	2.34	0.60
1:A:162:VAL:HG11	1:A:200:PHE:CE1	2.36	0.60
1:A:135:ASN:O	1:A:138:ALA:HB3	2.00	0.60
1:A:219:GLN:HB3	1:A:224:THR:HB	1.82	0.60
1:B:112:ILE:HG12	1:B:239:ARG:NH2	2.17	0.60
1:B:221:ALA:C	1:B:223:LYS:H	2.04	0.60
1:A:128:PRO:O	1:A:132:VAL:HG23	2.01	0.59
1:A:154:ARG:HG3	1:A:159:GLY:O	2.02	0.59
1:B:133:GLU:O	1:B:136:ARG:HG2	2.02	0.59
1:A:187:ARG:HG2	1:A:187:ARG:HH11	1.67	0.59
1:A:62:PHE:CD1	1:B:90:GLN:HG3	2.36	0.59
1:A:193:TRP:O	1:A:197:VAL:HG23	2.01	0.59
1:B:158:ALA:HB3	1:B:163:THR:CG2	2.33	0.59
1:A:98:TYR:CE2	1:A:102:HIS:HB2	2.37	0.59
1:A:140:ASP:N	1:A:140:ASP:OD1	2.35	0.59
1:A:161:GLN:O	1:A:163:THR:HG22	2.02	0.59
1:B:147:GLU:O	1:B:151:LEU:HB3	2.03	0.59
1:A:112:ILE:HG12	1:A:239:ARG:NH2	2.18	0.58
1:A:131:LYS:HD3	1:A:243:ILE:CG2	2.30	0.58
1:B:35:LEU:CG	1:B:54:LEU:HD12	2.32	0.58
1:A:14:SER:HA	1:A:55:PRO:HG3	1.85	0.58
1:B:17:VAL:HG23	1:B:67:SER:HB3	1.84	0.58
1:B:128:PRO:O	1:B:132:VAL:HG23	2.02	0.58
1:A:3:LEU:H	1:A:3:LEU:HD23	1.68	0.58
1:B:6:PHE:HA	1:B:31:ARG:O	2.03	0.58
1:A:133:GLU:O	1:A:137:THR:HG23	2.04	0.58
1:B:129:GLU:O	1:B:132:VAL:HB	2.04	0.58
1:B:133:GLU:O	1:B:137:THR:HG23	2.03	0.58
1:B:175:GLN:HB3	1:B:176:PRO:HD3	1.85	0.58
1:B:107:ARG:HG3	1:B:107:ARG:NH1	2.19	0.57
1:A:3:LEU:H	1:A:3:LEU:CD2	2.17	0.57
1:B:187:ARG:HB3	1:B:190:LEU:HB2	1.86	0.57

*Continued on next page...*

*Continued from previous page...*

Atom-1	Atom-2	Interatomic distance (Å)	Clash overlap (Å)
1:A:88:ASP:O	1:A:91:ALA:HB3	2.04	0.57
1:A:213:ILE:HD13	1:A:214:LEU:N	2.19	0.57
1:B:6:PHE:HD1	1:B:6:PHE:H	1.52	0.57
1:B:3:LEU:H	1:B:3:LEU:CD2	2.17	0.57
1:B:227:THR:O	1:B:227:THR:HG22	2.05	0.57
1:A:17:VAL:HG23	1:A:67:SER:HB3	1.86	0.57
1:B:135:ASN:O	1:B:139:MET:HG3	2.05	0.57
1:B:98:TYR:CZ	1:B:102:HIS:HB2	2.39	0.56
1:B:3:LEU:HD13	1:B:59:ASP:OD2	2.04	0.56
1:B:7:LEU:HD23	1:B:7:LEU:N	2.21	0.56
1:B:23:LYS:HE2	1:B:201:LEU:HA	1.88	0.56
1:A:35:LEU:CG	1:A:54:LEU:HD12	2.36	0.56
1:A:11:SER:O	1:A:14:SER:HB2	2.06	0.55
1:A:98:TYR:CZ	1:A:102:HIS:HB2	2.41	0.55
1:A:107:ARG:HG3	1:A:107:ARG:NH1	2.21	0.55
1:B:187:ARG:HG2	1:B:187:ARG:HH11	1.71	0.55
1:B:217:LEU:O	1:B:220:ALA:HB3	2.07	0.55
1:A:220:ALA:HA	1:A:225:LEU:HD23	1.87	0.55
1:A:242:ARG:HA	1:B:244:PRO:HB2	1.89	0.55
1:A:175:GLN:O	1:A:179:LEU:HD23	2.07	0.54
1:A:213:ILE:HD13	1:A:214:LEU:H	1.72	0.54
1:B:161:GLN:O	1:B:163:THR:HG22	2.06	0.54
1:A:89:LEU:HD11	1:B:77:LYS:HB2	1.90	0.54
1:B:42:SER:O	1:B:45:PHE:N	2.40	0.54
1:B:204:GLU:O	1:B:208:GLU:HG2	2.07	0.54
1:B:6:PHE:CD1	1:B:6:PHE:N	2.75	0.54
1:B:17:VAL:CG2	1:B:67:SER:HB3	2.38	0.54
1:B:24:ASN:HD21	1:B:84:TRP:HE1	1.55	0.54
1:A:175:GLN:O	1:A:179:LEU:CD2	2.56	0.54
1:A:221:ALA:O	1:A:223:LYS:HG2	2.08	0.54
1:A:24:ASN:HD21	1:A:84:TRP:HE1	1.56	0.54
1:B:178:ALA:CB	1:B:214:LEU:HD23	2.37	0.54
1:B:120:GLY:HA2	1:B:240:ILE:HD11	1.90	0.53
1:A:170:LEU:HD11	1:A:194:ARG:HG3	1.90	0.53
1:A:6:PHE:HD1	1:A:6:PHE:H	1.56	0.53
1:A:115:TRP:NE1	2:A:245:SO4:O2	2.30	0.53
1:B:112:ILE:N	1:B:113:PRO:CD	2.72	0.53
1:A:239:ARG:HD2	4:A:302:HOH:O	2.08	0.53
1:B:113:PRO:HB3	1:B:181:TYR:CE1	2.44	0.53
1:A:193:TRP:O	1:A:196:ARG:HB3	2.09	0.53
1:B:149:LYS:HD2	1:B:149:LYS:O	2.08	0.53

*Continued on next page...*

*Continued from previous page...*

Atom-1	Atom-2	Interatomic distance (Å)	Clash overlap (Å)
1:A:97:GLU:O	1:B:66:GLU:HG3	2.10	0.52
1:A:238:LEU:O	1:A:241:ALA:HB3	2.10	0.52
1:A:204:GLU:O	1:A:208:GLU:HG2	2.09	0.52
1:A:244:PRO:HB2	1:B:242:ARG:HA	1.91	0.52
1:B:140:ASP:OD1	1:B:140:ASP:N	2.43	0.51
1:B:123:ILE:HG21	1:B:233:TYR:HD1	1.75	0.51
1:A:6:PHE:CD1	1:A:6:PHE:N	2.79	0.51
1:A:149:LYS:HG3	1:A:150:PHE:CD2	2.45	0.51
1:A:3:LEU:HD13	1:A:59:ASP:OD2	2.10	0.51
1:A:78:TYR:O	1:A:80:THR:N	2.43	0.51
1:B:7:LEU:HD23	1:B:7:LEU:H	1.75	0.51
1:A:219:GLN:CB	1:A:224:THR:HB	2.40	0.51
1:A:70:ILE:O	1:A:74:LEU:HD13	2.10	0.51
1:B:224:THR:O	1:B:224:THR:CG2	2.57	0.51
1:A:128:PRO:HB2	1:A:131:LYS:HG3	1.91	0.51
1:B:238:LEU:O	1:B:241:ALA:HB3	2.11	0.51
1:A:83:HIS:HD2	1:A:162:VAL:O	1.94	0.50
1:B:30:LEU:N	1:B:30:LEU:HD23	2.26	0.50
1:A:17:VAL:CG2	1:A:67:SER:HB3	2.41	0.50
1:A:48:ILE:O	1:A:63:ILE:HG21	2.10	0.50
1:B:83:HIS:HD2	1:B:162:VAL:O	1.94	0.50
1:A:17:VAL:HG22	1:A:71:LEU:HG	1.93	0.50
1:B:219:GLN:O	1:B:224:THR:N	2.38	0.50
1:A:80:THR:HB	1:A:81:PRO:HD2	1.94	0.50
1:B:78:TYR:O	1:B:80:THR:N	2.45	0.50
1:B:85:TYR:HH	1:B:96:HIS:CE1	2.30	0.50
1:B:219:GLN:CA	1:B:224:THR:HB	2.42	0.50
1:A:185:GLU:OE1	1:A:185:GLU:HA	2.12	0.49
1:B:171:GLU:OE1	1:B:171:GLU:HA	2.09	0.49
1:B:23:LYS:HB2	1:B:205:LEU:HD11	1.93	0.49
1:A:219:GLN:HA	1:A:224:THR:HB	1.95	0.49
1:B:88:ASP:O	1:B:91:ALA:HB3	2.12	0.49
1:A:147:GLU:O	1:A:151:LEU:HB3	2.12	0.49
1:B:88:ASP:HB3	1:B:91:ALA:HB3	1.94	0.49
1:A:7:LEU:N	1:A:7:LEU:CD2	2.76	0.49
1:A:178:ALA:CB	1:A:214:LEU:HD23	2.42	0.49
1:A:218:GLU:HG2	1:A:222:LYS:HD2	1.94	0.49
1:B:162:VAL:HG11	1:B:200:PHE:CE1	2.48	0.49
1:B:11:SER:O	1:B:14:SER:HB2	2.12	0.49
1:B:88:ASP:HB3	1:B:91:ALA:HB2	1.93	0.48
1:A:213:ILE:HA	1:A:216:ILE:HB	1.95	0.48

*Continued on next page...*

*Continued from previous page...*

Atom-1	Atom-2	Interatomic distance (Å)	Clash overlap (Å)
1:B:213:ILE:HA	1:B:216:ILE:HB	1.95	0.48
1:A:71:LEU:O	1:A:74:LEU:HB2	2.12	0.48
1:A:219:GLN:O	1:A:224:THR:N	2.36	0.48
1:A:162:VAL:HG11	1:A:200:PHE:CZ	2.48	0.48
1:B:24:ASN:OD1	1:B:84:TRP:NE1	2.47	0.48
1:A:112:ILE:N	1:A:113:PRO:CD	2.77	0.48
1:B:85:TYR:OH	1:B:96:HIS:CE1	2.66	0.48
1:A:23:LYS:HE2	1:A:201:LEU:HA	1.95	0.47
1:A:210:HIS:HB3	1:A:213:ILE:HD11	1.96	0.47
1:A:143:LEU:O	1:A:147:GLU:HB2	2.15	0.47
1:A:149:LYS:HD2	1:A:149:LYS:C	2.35	0.47
1:A:224:THR:O	1:A:224:THR:CG2	2.62	0.47
1:B:10:VAL:HG12	3:B:301:GGC:H7'	1.96	0.47
1:B:178:ALA:HB1	1:B:214:LEU:HD23	1.94	0.47
1:B:131:LYS:HD3	1:B:243:ILE:CG2	2.41	0.47
1:A:42:SER:O	1:A:45:PHE:N	2.45	0.47
1:A:44:GLU:H	1:A:44:GLU:HG2	1.48	0.47
1:A:219:GLN:CA	1:A:224:THR:HB	2.45	0.47
1:B:118:VAL:CG2	1:B:217:LEU:HD23	2.44	0.47
1:B:149:LYS:HG3	1:B:150:PHE:CD2	2.50	0.47
1:B:14:SER:HA	1:B:55:PRO:HG3	1.97	0.47
1:B:68:SER:O	1:B:72:ILE:HG13	2.14	0.47
1:A:24:ASN:ND2	1:A:81:PRO:HD2	2.29	0.47
1:B:35:LEU:HD23	1:B:40:HIS:CG	2.49	0.47
1:A:112:ILE:HG12	1:A:239:ARG:HH22	1.80	0.47
1:B:6:PHE:HE1	1:B:58:LYS:HB2	1.80	0.46
1:B:115:TRP:CE2	1:B:239:ARG:HG2	2.50	0.46
1:B:193:TRP:HA	1:B:196:ARG:NH1	2.30	0.46
1:A:88:ASP:HB3	1:A:91:ALA:HB3	1.95	0.46
1:A:10:VAL:HG22	1:A:212:ILE:HG22	1.97	0.46
1:B:90:GLN:HE21	1:B:90:GLN:CA	2.29	0.46
1:B:53:LYS:O	1:B:56:THR:HG22	2.15	0.46
1:A:19:ILE:HG23	1:A:205:LEU:HD13	1.97	0.46
1:A:115:TRP:CE2	1:A:239:ARG:HG2	2.50	0.46
1:B:139:MET:HB3	1:B:139:MET:HE2	1.78	0.46
1:B:115:TRP:NE1	2:B:302:SO4:O2	2.41	0.46
1:A:187:ARG:HG2	1:A:187:ARG:NH1	2.31	0.46
1:B:24:ASN:ND2	1:B:81:PRO:HD2	2.31	0.46
1:B:70:ILE:O	1:B:74:LEU:HD13	2.16	0.46
1:B:212:ILE:H	1:B:212:ILE:HG12	1.57	0.46
1:B:218:GLU:HG2	1:B:222:LYS:HD2	1.96	0.46

*Continued on next page...*

*Continued from previous page...*

Atom-1	Atom-2	Interatomic distance (Å)	Clash overlap (Å)
1:A:24:ASN:OD1	1:A:84:TRP:NE1	2.48	0.46
1:B:89:LEU:HD23	1:B:89:LEU:HA	1.79	0.46
1:B:220:ALA:HA	1:B:225:LEU:CD2	2.44	0.46
1:B:10:VAL:HG22	1:B:212:ILE:HG22	1.98	0.45
1:A:163:THR:HG23	1:A:166:ASP:OD2	2.16	0.45
1:B:12:GLN:HG3	1:B:172:GLU:CD	2.37	0.45
1:A:88:ASP:OD1	1:A:89:LEU:N	2.49	0.45
1:B:30:LEU:HD23	1:B:30:LEU:H	1.82	0.45
1:B:234:GLN:O	1:B:237:LEU:HB2	2.17	0.45
1:A:77:LYS:HB2	1:B:89:LEU:HD11	1.98	0.45
1:A:6:PHE:HE1	1:A:58:LYS:HB2	1.81	0.45
1:A:239:ARG:CD	4:A:302:HOH:O	2.65	0.45
1:B:225:LEU:HD12	1:B:225:LEU:HA	1.78	0.45
1:B:221:ALA:C	1:B:223:LYS:N	2.69	0.45
1:A:8:ASP:HB2	1:A:33:VAL:O	2.17	0.45
1:A:33:VAL:CG1	1:A:54:LEU:HD11	2.47	0.45
1:B:12:GLN:CG	1:B:13:PRO:HD3	2.26	0.45
1:A:8:ASP:OD1	1:A:10:VAL:HG23	2.17	0.44
1:A:129:GLU:O	1:A:132:VAL:HB	2.17	0.44
1:B:17:VAL:HG22	1:B:71:LEU:HG	1.99	0.44
1:A:89:LEU:HD23	1:A:89:LEU:HA	1.79	0.44
1:B:147:GLU:HG2	1:B:190:LEU:HG	1.98	0.44
1:A:66:GLU:OE1	3:A:301:GGC:N1	2.51	0.44
1:A:113:PRO:O	1:A:117:GLN:HB2	2.18	0.44
1:B:48:ILE:O	1:B:63:ILE:HG21	2.18	0.44
1:B:143:LEU:O	1:B:147:GLU:HB2	2.17	0.44
1:B:154:ARG:HB2	1:B:155:PRO:HD2	1.99	0.44
1:A:221:ALA:C	1:A:223:LYS:N	2.68	0.44
1:A:102:HIS:CD2	1:A:106:ILE:HB	2.53	0.44
1:A:122:LEU:HD13	1:A:228:PRO:CG	2.47	0.44
1:A:33:VAL:CB	1:A:54:LEU:HD11	2.45	0.43
1:A:178:ALA:HB1	1:A:214:LEU:HD23	2.00	0.43
1:B:219:GLN:HA	1:B:224:THR:HB	1.99	0.43
1:A:147:GLU:HG2	1:A:190:LEU:HG	2.00	0.43
1:A:90:GLN:CA	1:A:90:GLN:HE21	2.31	0.43
1:B:136:ARG:HG2	1:B:137:THR:N	2.34	0.43
1:A:68:SER:O	1:A:72:ILE:HG13	2.18	0.43
1:A:113:PRO:HB3	1:A:181:TYR:HE1	1.80	0.43
1:A:135:ASN:O	1:A:139:MET:HG3	2.19	0.43
1:A:10:VAL:HG12	3:A:301:GGC:H7'	2.00	0.43
1:B:26:ILE:HG12	1:B:78:TYR:CD2	2.53	0.43

*Continued on next page...*

*Continued from previous page...*

Atom-1	Atom-2	Interatomic distance (Å)	Clash overlap (Å)
1:A:93:ALA:HB1	1:B:64:LEU:CD1	2.49	0.43
1:B:80:THR:HB	1:B:81:PRO:HD2	2.01	0.43
1:B:41:LYS:NZ	3:B:301:GGC:O31	2.52	0.43
1:B:3:LEU:HD23	1:B:3:LEU:N	2.32	0.43
1:B:163:THR:HG23	1:B:166:ASP:OD2	2.19	0.42
1:B:239:ARG:HG3	1:B:240:ILE:N	2.33	0.42
1:A:66:GLU:HG3	1:B:97:GLU:O	2.19	0.42
1:A:155:PRO:HA	1:A:196:ARG:NH1	2.34	0.42
1:B:7:LEU:N	1:B:7:LEU:CD2	2.82	0.42
1:B:205:LEU:O	1:B:208:GLU:HG2	2.19	0.42
1:B:102:HIS:CD2	1:B:106:ILE:HB	2.54	0.42
1:B:191:ALA:O	1:B:194:ARG:HD2	2.19	0.42
1:B:135:ASN:O	1:B:138:ALA:HB3	2.19	0.42
1:B:185:GLU:OE1	1:B:185:GLU:HA	2.18	0.42
1:A:30:LEU:N	1:A:30:LEU:HD23	2.34	0.42
1:A:139:MET:HB3	1:A:139:MET:HE2	1.79	0.42
1:B:65:THR:O	1:B:66:GLU:O	2.38	0.42
1:B:136:ARG:HG2	1:B:137:THR:H	1.85	0.42
1:A:85:TYR:OH	1:A:96:HIS:CE1	2.73	0.42
1:B:122:LEU:HD21	1:B:225:LEU:HB3	2.00	0.42
1:B:19:ILE:CG2	1:B:167:LEU:HD11	2.49	0.42
1:B:42:SER:O	1:B:43:LYS:C	2.58	0.42
1:B:184:PHE:HB3	1:B:191:ALA:HB2	2.01	0.42
1:B:213:ILE:O	1:B:216:ILE:CG2	2.62	0.42
1:A:83:HIS:CD2	1:A:84:TRP:N	2.87	0.41
1:B:8:ASP:OD1	1:B:10:VAL:HG23	2.20	0.41
1:B:239:ARG:NH1	2:B:302:SO4:O3	2.52	0.41
1:A:115:TRP:HZ3	1:A:236:MET:HG2	1.84	0.41
1:B:20:PHE:HB2	1:B:167:LEU:CD2	2.49	0.41
1:B:231:GLU:OE1	1:B:231:GLU:N	2.39	0.41
1:A:45:PHE:HZ	1:A:56:THR:CG2	2.33	0.41
1:A:103:ALA:HA	1:A:107:ARG:HB3	2.02	0.41
1:B:9:LEU:CB	1:B:212:ILE:HG13	2.51	0.41
1:B:30:LEU:N	1:B:30:LEU:CD2	2.84	0.41
1:A:19:ILE:CG2	1:A:167:LEU:HD11	2.50	0.41
1:B:61:ASP:OD1	1:B:61:ASP:N	2.47	0.41
1:A:12:GLN:HG3	1:A:172:GLU:CD	2.41	0.41
1:A:127:VAL:HG12	1:A:128:PRO:HD2	2.03	0.41
1:B:210:HIS:HB3	1:B:213:ILE:HD11	2.02	0.41
1:A:7:LEU:HB2	1:A:14:SER:HB3	2.01	0.41
1:A:61:ASP:OD1	1:A:61:ASP:N	2.43	0.41

*Continued on next page...*

Continued from previous page...

Atom-1	Atom-2	Interatomic distance (Å)	Clash overlap (Å)
1:A:89:LEU:CD1	1:B:77:LYS:HB2	2.50	0.41
1:A:184:PHE:HB3	1:A:191:ALA:HB2	2.03	0.41
1:A:213:ILE:O	1:A:216:ILE:CG2	2.66	0.41
1:B:9:LEU:HB2	1:B:212:ILE:HG13	2.03	0.41
1:B:103:ALA:HA	1:B:107:ARG:HB3	2.02	0.41
1:B:139:MET:O	1:B:142:ALA:N	2.54	0.41
1:B:175:GLN:O	1:B:179:LEU:HD23	2.20	0.41
1:B:176:PRO:HB2	1:B:183:LEU:HD11	2.03	0.41
1:B:221:ALA:O	1:B:223:LYS:HG2	2.21	0.41
1:A:242:ARG:HA	1:B:244:PRO:CB	2.51	0.41
1:B:236:MET:O	1:B:240:ILE:HG13	2.21	0.40
1:A:35:LEU:HD23	1:A:40:HIS:CG	2.56	0.40
1:A:95:VAL:HG22	1:A:158:ALA:HB1	2.02	0.40
1:B:7:LEU:HA	1:B:54:LEU:HD22	2.03	0.40
1:B:33:VAL:CB	1:B:54:LEU:HD11	2.44	0.40
1:B:174:MET:HE1	1:B:177:VAL:CG1	2.51	0.40
1:A:23:LYS:HB2	1:A:205:LEU:HD11	2.03	0.40
1:B:33:VAL:CG1	1:B:54:LEU:HD11	2.52	0.40
1:A:212:ILE:H	1:A:212:ILE:HG12	1.48	0.40
1:A:218:GLU:O	1:A:219:GLN:C	2.59	0.40
1:B:110:PHE:O	1:B:176:PRO:HD3	2.21	0.40

There are no symmetry-related clashes.

## 5.3 Torsion angles [i](#)

### 5.3.1 Protein backbone [i](#)

In the following table, the Percentiles column shows the percent Ramachandran outliers of the chain as a percentile score with respect to all X-ray entries followed by that with respect to entries of similar resolution.

The Analysed column shows the number of residues for which the backbone conformation was analysed, and the total number of residues.

Mol	Chain	Analysed	Favoured	Allowed	Outliers	Percentiles	
1	A	242/244 (99%)	195 (81%)	37 (15%)	10 (4%)	3	17
1	B	242/244 (99%)	194 (80%)	40 (16%)	8 (3%)	4	22
All	All	484/488 (99%)	389 (80%)	77 (16%)	18 (4%)	3	20



All (18) Ramachandran outliers are listed below:

Mol	Chain	Res	Type
1	A	79	GLN
1	A	185	GLU
1	A	211	SER
1	B	79	GLN
1	B	185	GLU
1	B	211	SER
1	A	25	GLY
1	A	66	GLU
1	B	25	GLY
1	B	66	GLU
1	B	86	PRO
1	A	84	TRP
1	A	86	PRO
1	B	84	TRP
1	A	9	LEU
1	B	9	LEU
1	A	91	ALA
1	A	204	GLU

### 5.3.2 Protein sidechains [i](#)

In the following table, the Percentiles column shows the percent sidechain outliers of the chain as a percentile score with respect to all X-ray entries followed by that with respect to entries of similar resolution.

The Analysed column shows the number of residues for which the sidechain conformation was analysed, and the total number of residues.

Mol	Chain	Analysed	Rotameric	Outliers	Percentiles
1	A	206/206 (100%)	159 (77%)	47 (23%)	<b>1</b> <b>3</b>
1	B	206/206 (100%)	161 (78%)	45 (22%)	<b>1</b> <b>4</b>
All	All	412/412 (100%)	320 (78%)	92 (22%)	<b>1</b> <b>3</b>

All (92) residues with a non-rotameric sidechain are listed below:

Mol	Chain	Res	Type
1	A	1	MET
1	A	3	LEU
1	A	4	GLU
1	A	6	PHE
1	A	11	SER

*Continued on next page...*

*Continued from previous page...*

<b>Mol</b>	<b>Chain</b>	<b>Res</b>	<b>Type</b>
1	A	30	LEU
1	A	31	ARG
1	A	44	GLU
1	A	48	ILE
1	A	56	THR
1	A	67	SER
1	A	68	SER
1	A	79	GLN
1	A	89	LEU
1	A	90	GLN
1	A	122	LEU
1	A	135	ASN
1	A	137	THR
1	A	140	ASP
1	A	141	GLN
1	A	147	GLU
1	A	151	LEU
1	A	154	ARG
1	A	163	THR
1	A	164	LEU
1	A	168	MET
1	A	171	GLU
1	A	173	LEU
1	A	175	GLN
1	A	179	LEU
1	A	185	GLU
1	A	187	ARG
1	A	190	LEU
1	A	193	TRP
1	A	194	ARG
1	A	204	GLU
1	A	205	LEU
1	A	207	GLN
1	A	211	SER
1	A	212	ILE
1	A	213	ILE
1	A	217	LEU
1	A	222	LYS
1	A	223	LYS
1	A	225	LEU
1	A	239	ARG
1	A	242	ARG

*Continued on next page...*

*Continued from previous page...*

<b>Mol</b>	<b>Chain</b>	<b>Res</b>	<b>Type</b>
1	B	1	MET
1	B	3	LEU
1	B	4	GLU
1	B	6	PHE
1	B	30	LEU
1	B	31	ARG
1	B	44	GLU
1	B	48	ILE
1	B	56	THR
1	B	61	ASP
1	B	67	SER
1	B	68	SER
1	B	79	GLN
1	B	89	LEU
1	B	90	GLN
1	B	117	GLN
1	B	122	LEU
1	B	135	ASN
1	B	136	ARG
1	B	137	THR
1	B	140	ASP
1	B	141	GLN
1	B	147	GLU
1	B	151	LEU
1	B	154	ARG
1	B	163	THR
1	B	164	LEU
1	B	168	MET
1	B	171	GLU
1	B	173	LEU
1	B	175	GLN
1	B	185	GLU
1	B	190	LEU
1	B	193	TRP
1	B	194	ARG
1	B	204	GLU
1	B	205	LEU
1	B	207	GLN
1	B	211	SER
1	B	213	ILE
1	B	217	LEU
1	B	225	LEU

*Continued on next page...*

*Continued from previous page...*

Mol	Chain	Res	Type
1	B	227	THR
1	B	239	ARG
1	B	242	ARG

Sometimes sidechains can be flipped to improve hydrogen bonding and reduce clashes. All (16) such sidechains are listed below:

Mol	Chain	Res	Type
1	A	12	GLN
1	A	24	ASN
1	A	39	GLN
1	A	83	HIS
1	A	90	GLN
1	A	96	HIS
1	A	102	HIS
1	A	135	ASN
1	A	144	GLN
1	B	24	ASN
1	B	39	GLN
1	B	83	HIS
1	B	90	GLN
1	B	96	HIS
1	B	102	HIS
1	B	144	GLN

### 5.3.3 RNA [i](#)

There are no RNA molecules in this entry.

### 5.4 Non-standard residues in protein, DNA, RNA chains [i](#)

There are no non-standard protein/DNA/RNA residues in this entry.

### 5.5 Carbohydrates [i](#)

There are no monosaccharides in this entry.

### 5.6 Ligand geometry [i](#)

4 ligands are modelled in this entry.

In the following table, the Counts columns list the number of bonds (or angles) for which Mogul statistics could be retrieved, the number of bonds (or angles) that are observed in the model and the number of bonds (or angles) that are defined in the Chemical Component Dictionary. The Link column lists molecule types, if any, to which the group is linked. The Z score for a bond length (or angle) is the number of standard deviations the observed value is removed from the expected value. A bond length (or angle) with  $|Z| > 2$  is considered an outlier worth inspection. RMSZ is the root-mean-square of all Z scores of the bond lengths (or angles).

Mol	Type	Chain	Res	Link	Bond lengths			Bond angles		
					Counts	RMSZ	# Z  > 2	Counts	RMSZ	# Z  > 2
2	SO4	A	245	-	4,4,4	0.27	0	6,6,6	0.06	0
2	SO4	B	302	-	4,4,4	0.39	0	6,6,6	0.06	0
3	GGC	B	301	-	31,32,32	1.67	7 (22%)	41,42,42	1.00	3 (7%)
3	GGC	A	301	-	31,32,32	1.56	7 (22%)	41,42,42	1.03	3 (7%)

In the following table, the Chirals column lists the number of chiral outliers, the number of chiral centers analysed, the number of these observed in the model and the number defined in the Chemical Component Dictionary. Similar counts are reported in the Torsion and Rings columns. '-' means no outliers of that kind were identified.

Mol	Type	Chain	Res	Link	Chirals	Torsions	Rings
3	GGC	A	301	-	-	2/28/28/28	0/2/2/2
3	GGC	B	301	-	-	2/28/28/28	0/2/2/2

All (14) bond length outliers are listed below:

Mol	Chain	Res	Type	Atoms	Z	Observed(Å)	Ideal(Å)
3	B	301	GGC	C10-C5'	4.33	1.56	1.50
3	A	301	GGC	C4A-C8A	4.26	1.50	1.43
3	B	301	GGC	C4A-C8A	4.19	1.50	1.43
3	B	301	GGC	C6'-C5'	3.56	1.44	1.37
3	A	301	GGC	C10-C5'	3.21	1.55	1.50
3	A	301	GGC	C6'-C5'	2.78	1.42	1.37
3	A	301	GGC	C3'-C4'	2.72	1.42	1.36
3	A	301	GGC	C2'-C1'	2.61	1.42	1.36
3	B	301	GGC	C7'-C8'	2.56	1.42	1.36
3	B	301	GGC	C7'-C6'	2.38	1.43	1.38
3	A	301	GGC	C7'-C8'	2.32	1.42	1.36
3	B	301	GGC	C2'-C1'	2.27	1.41	1.36
3	B	301	GGC	C3'-C4'	2.19	1.41	1.36
3	A	301	GGC	C7'-C6'	2.02	1.43	1.38

All (6) bond angle outliers are listed below:

Mol	Chain	Res	Type	Atoms	Z	Observed(°)	Ideal(°)
3	A	301	GGC	C10-C5'-C4A	4.09	124.78	121.43
3	B	301	GGC	C10-C5'-C4A	3.87	124.60	121.43
3	B	301	GGC	C5'-C10-SG2	2.44	120.34	113.72
3	A	301	GGC	C10-C5'-C6'	-2.39	116.09	119.33
3	B	301	GGC	C10-C5'-C6'	-2.07	116.52	119.33
3	A	301	GGC	C5'-C10-SG2	2.01	119.18	113.72

There are no chirality outliers.

All (4) torsion outliers are listed below:

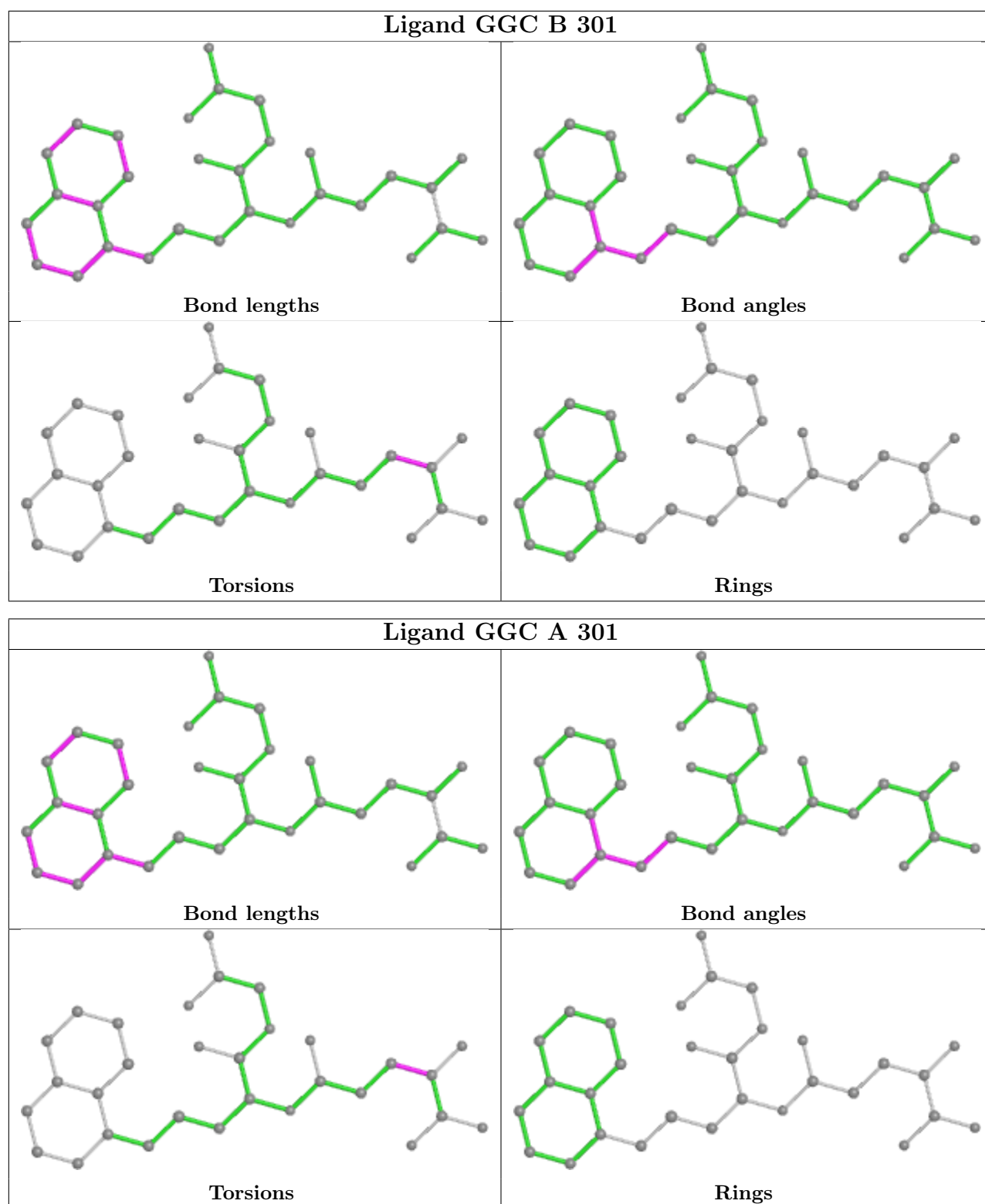
Mol	Chain	Res	Type	Atoms
3	A	301	GGC	C1-CA1-CB1-CG1
3	B	301	GGC	C1-CA1-CB1-CG1
3	A	301	GGC	N1-CA1-CB1-CG1
3	B	301	GGC	N1-CA1-CB1-CG1

There are no ring outliers.

4 monomers are involved in 7 short contacts:

Mol	Chain	Res	Type	Clashes	Symm-Clashes
2	A	245	SO4	1	0
2	B	302	SO4	2	0
3	B	301	GGC	2	0
3	A	301	GGC	2	0

The following is a two-dimensional graphical depiction of Mogul quality analysis of bond lengths, bond angles, torsion angles, and ring geometry for all instances of the Ligand of Interest. In addition, ligands with molecular weight > 250 and outliers as shown on the validation Tables will also be included. For torsion angles, if less than 5% of the Mogul distribution of torsion angles is within 10 degrees of the torsion angle in question, then that torsion angle is considered an outlier. Any bond that is central to one or more torsion angles identified as an outlier by Mogul will be highlighted in the graph. For rings, the root-mean-square deviation (RMSD) between the ring in question and similar rings identified by Mogul is calculated over all ring torsion angles. If the average RMSD is greater than 60 degrees and the minimal RMSD between the ring in question and any Mogul-identified rings is also greater than 60 degrees, then that ring is considered an outlier. The outliers are highlighted in purple. The color gray indicates Mogul did not find sufficient equivalents in the CSD to analyse the geometry.



## 5.7 Other polymers [\(i\)](#)

There are no such residues in this entry.

## 5.8 Polymer linkage issues

There are no chain breaks in this entry.



## 6 Fit of model and data [i](#)

### 6.1 Protein, DNA and RNA chains [i](#)

EDS was not executed - this section is therefore empty.

### 6.2 Non-standard residues in protein, DNA, RNA chains [i](#)

EDS was not executed - this section is therefore empty.

### 6.3 Carbohydrates [i](#)

EDS was not executed - this section is therefore empty.

### 6.4 Ligands [i](#)

EDS was not executed - this section is therefore empty.

### 6.5 Other polymers [i](#)

EDS was not executed - this section is therefore empty.