



Full wwPDB X-ray Structure Validation Report ⓘ

May 22, 2020 – 01:10 am BST

PDB ID : 3L58
Title : Structure of BACE Bound to SCH589432
Authors : Strickland, C.; Zhu, Z.
Deposited on : 2009-12-21
Resolution : 1.80 Å(reported)

This is a Full wwPDB X-ray Structure Validation Report for a publicly released PDB entry.

We welcome your comments at validation@mail.wwpdb.org

A user guide is available at

<https://www.wwpdb.org/validation/2017/XrayValidationReportHelp>

with specific help available everywhere you see the ⓘ symbol.

The following versions of software and data (see [references ⓘ](#)) were used in the production of this report:

MolProbity : 4.02b-467
Mogul : 1.8.5 (274361), CSD as541be (2020)
Xtriage (Phenix) : 1.13
EDS : 2.11
buster-report : 1.1.7 (2018)
Percentile statistics : 20191225.v01 (using entries in the PDB archive December 25th 2019)
Refmac : 5.8.0158
CCP4 : 7.0.044 (Gargrove)
Ideal geometry (proteins) : Engh & Huber (2001)
Ideal geometry (DNA, RNA) : Parkinson et al. (1996)
Validation Pipeline (wwPDB-VP) : 2.11

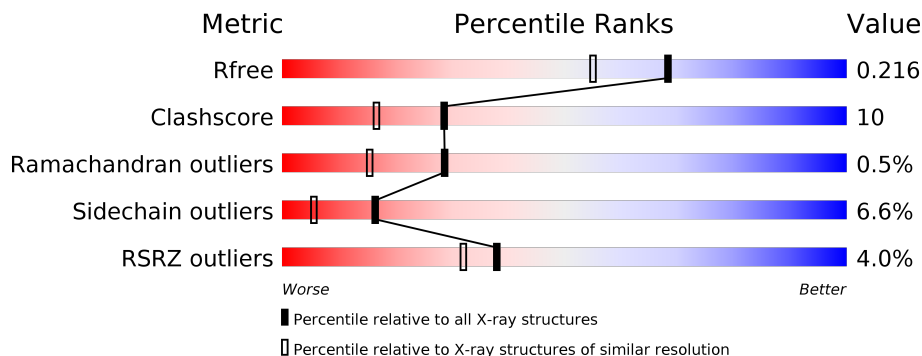
1 Overall quality at a glance

The following experimental techniques were used to determine the structure:

X-RAY DIFFRACTION

The reported resolution of this entry is 1.80 Å.

Percentile scores (ranging between 0-100) for global validation metrics of the entry are shown in the following graphic. The table shows the number of entries on which the scores are based.



Metric	Whole archive (#Entries)	Similar resolution (#Entries, resolution range(Å))
R_{free}	130704	5950 (1.80-1.80)
Clashscore	141614	6793 (1.80-1.80)
Ramachandran outliers	138981	6697 (1.80-1.80)
Sidechain outliers	138945	6696 (1.80-1.80)
RSRZ outliers	127900	5850 (1.80-1.80)

The table below summarises the geometric issues observed across the polymeric chains and their fit to the electron density. The red, orange, yellow and green segments on the lower bar indicate the fraction of residues that contain outliers for ≥ 3 , 2, 1 and 0 types of geometric quality criteria respectively. A grey segment represents the fraction of residues that are not modelled. The numeric value for each fraction is indicated below the corresponding segment, with a dot representing fractions $\leq 5\%$. The upper red bar (where present) indicates the fraction of residues that have poor fit to the electron density. The numeric value is given above the bar.

Mol	Chain	Length	Quality of chain
1	A	414	<p>4% (poor fit), 75% (0 outliers), 19% (1 outlier), 5% (2 outliers)</p>
1	B	414	<p>3% (poor fit), 72% (0 outliers), 19% (1 outlier), 6% (2 outliers)</p>

The following table lists non-polymeric compounds, carbohydrate monomers and non-standard residues in protein, DNA, RNA chains that are outliers for geometric or electron-density-fit criteria:

Mol	Type	Chain	Res	Chirality	Geometry	Clashes	Electron density
2	CS5	A	1	X	-	-	-
2	CS5	B	1	X	-	-	-

2 Entry composition [i](#)

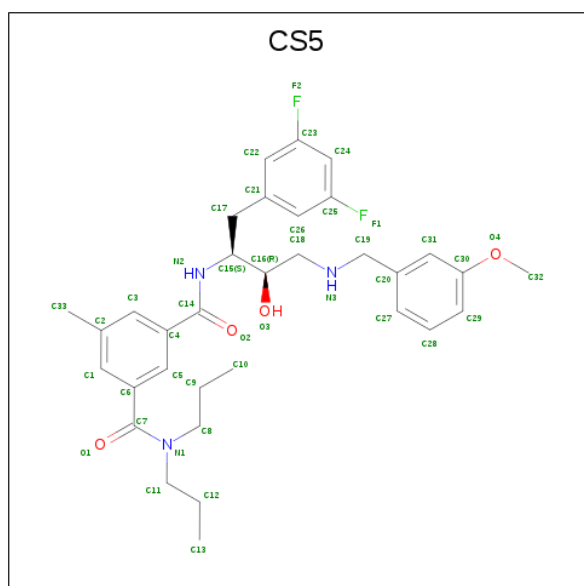
There are 3 unique types of molecules in this entry. The entry contains 7376 atoms, of which 0 are hydrogens and 0 are deuteriums.

In the tables below, the ZeroOcc column contains the number of atoms modelled with zero occupancy, the AltConf column contains the number of residues with at least one atom in alternate conformation and the Trace column contains the number of residues modelled with at most 2 atoms.

- Molecule 1 is a protein called Beta-secretase 1.

Mol	Chain	Residues	Atoms					ZeroOcc	AltConf	Trace
			Total	C	N	O	S			
1	A	395	Total 3096	C 1979	N 519	O 584	S 14	0	0	0
1	B	389	Total 3052	C 1953	N 507	O 578	S 14	0	0	0

- Molecule 2 is N'-{(1S,2R)-1-(3,5-DIFLUOROBENZYL)-2-HYDROXY-3-[(3-METHOXYBENZYL)AMINO]PROPYL}-5-METHYL-N,N-DIPROPYLISOPHTHALAMIDE (three-letter code: CS5) (formula: C₃₃H₄₁F₂N₃O₄).



Mol	Chain	Residues	Atoms					ZeroOcc	AltConf
			Total	C	F	N	O		
2	A	1	Total 42	C 33	F 2	N 3	O 4	0	0
2	B	1	Total 42	C 33	F 2	N 3	O 4	0	0

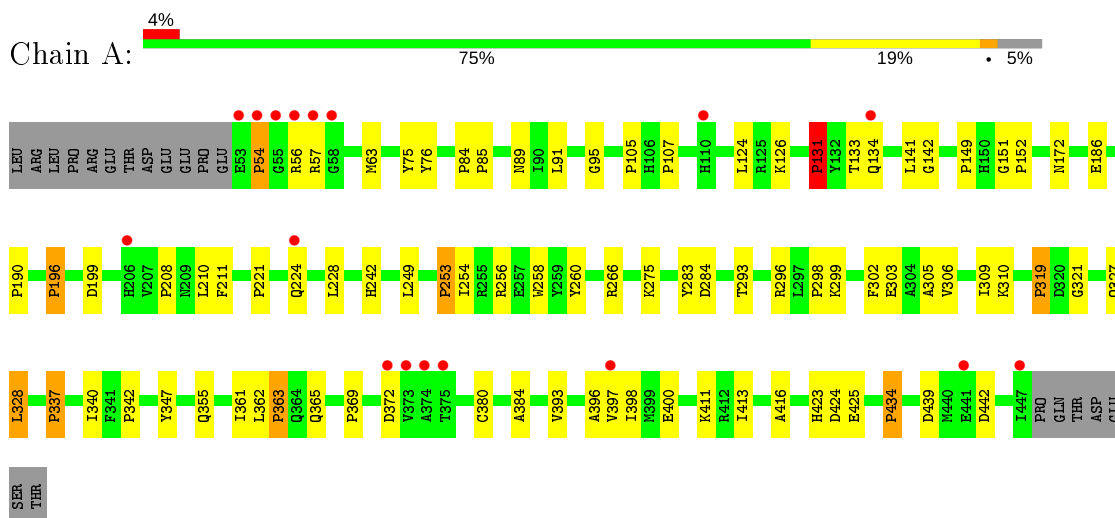
- Molecule 3 is water.

Mol	Chain	Residues	Atoms		ZeroOcc	AltConf
3	A	607	Total 607	O 607	0	0
3	B	537	Total 537	O 537	0	0

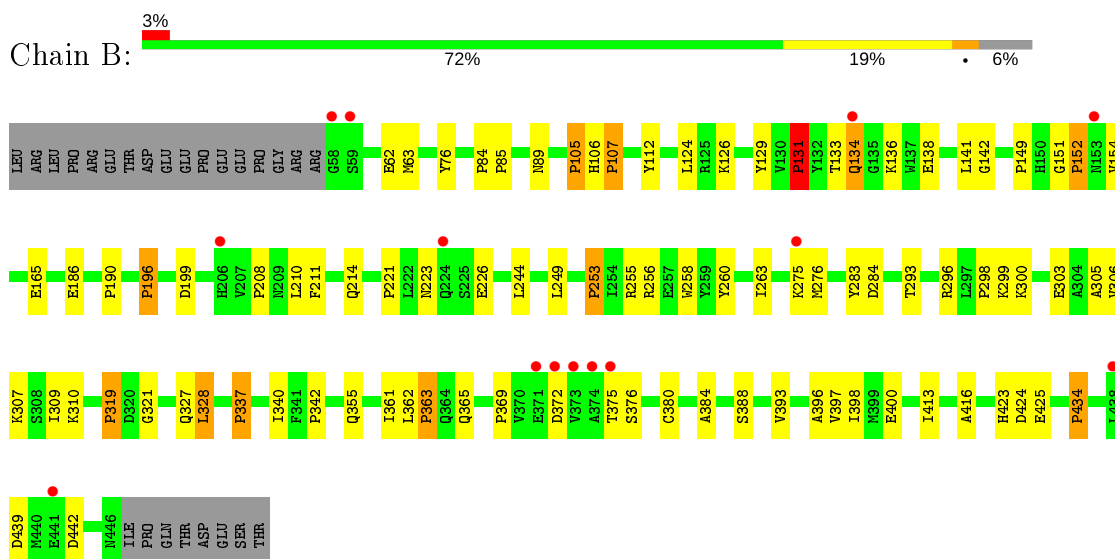
3 Residue-property plots [i](#)

These plots are drawn for all protein, RNA and DNA chains in the entry. The first graphic for a chain summarises the proportions of the various outlier classes displayed in the second graphic. The second graphic shows the sequence view annotated by issues in geometry and electron density. Residues are color-coded according to the number of geometric quality criteria for which they contain at least one outlier: green = 0, yellow = 1, orange = 2 and red = 3 or more. A red dot above a residue indicates a poor fit to the electron density ($RSRZ > 2$). Stretches of 2 or more consecutive residues without any outlier are shown as a green connector. Residues present in the sample, but not in the model, are shown in grey.

- Molecule 1: Beta-secretase 1



- Molecule 1: Beta-secretase 1



4 Data and refinement statistics i

Property	Value	Source
Space group	P 21 21 21	Depositor
Cell constants a, b, c, α , β , γ	86.45Å 89.34Å 131.17Å 90.00° 90.00° 90.00°	Depositor
Resolution (Å)	22.72 – 1.80 22.72 – 1.70	Depositor EDS
% Data completeness (in resolution range)	96.7 (22.72-1.80) 96.0 (22.72-1.70)	Depositor EDS
R_{merge}	0.07	Depositor
R_{sym}	(Not available)	Depositor
$\langle I/\sigma(I) \rangle$ ¹	2.46 (at 1.70Å)	Xtrriage
Refinement program	CNS	Depositor
R, R_{free}	0.201 , 0.223 0.195 , 0.216	Depositor DCC
R_{free} test set	5399 reflections (5.01%)	wwPDB-VP
Wilson B-factor (Å ²)	15.5	Xtrriage
Anisotropy	0.486	Xtrriage
Bulk solvent k_{sol} (e/Å ³), B_{sol} (Å ²)	0.35 , 48.3	EDS
L-test for twinning ²	$\langle L \rangle = 0.50$, $\langle L^2 \rangle = 0.33$	Xtrriage
Estimated twinning fraction	0.000 for k,h,-l	Xtrriage
F_o, F_c correlation	0.96	EDS
Total number of atoms	7376	wwPDB-VP
Average B, all atoms (Å ²)	18.0	wwPDB-VP

Xtrriage's analysis on translational NCS is as follows: *The analyses of the Patterson function reveals a significant off-origin peak that is 51.79 % of the origin peak, indicating pseudo-translational symmetry. The chance of finding a peak of this or larger height randomly in a structure without pseudo-translational symmetry is equal to 5.3339e-05. The detected translational NCS is most likely also responsible for the elevated intensity ratio.*

¹ Intensities estimated from amplitudes.

² Theoretical values of $\langle |L| \rangle$, $\langle L^2 \rangle$ for acentric reflections are 0.5, 0.333 respectively for untwinned datasets, and 0.375, 0.2 for perfectly twinned datasets.

5 Model quality [i](#)

5.1 Standard geometry [i](#)

Bond lengths and bond angles in the following residue types are not validated in this section: CS5

The Z score for a bond length (or angle) is the number of standard deviations the observed value is removed from the expected value. A bond length (or angle) with $|Z| > 5$ is considered an outlier worth inspection. RMSZ is the root-mean-square of all Z scores of the bond lengths (or angles).

Mol	Chain	Bond lengths		Bond angles	
		RMSZ	# Z >5	RMSZ	# Z >5
1	A	0.36	0/3174	0.76	1/4314 (0.0%)
1	B	0.35	0/3130	0.75	0/4256
All	All	0.36	0/6304	0.75	1/8570 (0.0%)

There are no bond length outliers.

All (1) bond angle outliers are listed below:

Mol	Chain	Res	Type	Atoms	Z	Observed(°)	Ideal(°)
1	A	54	PRO	N-CA-CB	5.72	110.16	103.30

There are no chirality outliers.

There are no planarity outliers.

5.2 Too-close contacts [i](#)

In the following table, the Non-H and H(model) columns list the number of non-hydrogen atoms and hydrogen atoms in the chain respectively. The H(added) column lists the number of hydrogen atoms added and optimized by MolProbity. The Clashes column lists the number of clashes within the asymmetric unit, whereas Symm-Clashes lists symmetry related clashes.

Mol	Chain	Non-H	H(model)	H(added)	Clashes	Symm-Clashes
1	A	3096	0	3002	59	0
1	B	3052	0	2959	60	0
2	A	42	0	41	2	0
2	B	42	0	41	1	0
3	A	607	0	0	3	0
3	B	537	0	0	2	0
All	All	7376	0	6043	119	0

The all-atom clashscore is defined as the number of clashes found per 1000 atoms (including hydrogen atoms). The all-atom clashscore for this structure is 10.

All (119) close contacts within the same asymmetric unit are listed below, sorted by their clash magnitude.

Atom-1	Atom-2	Interatomic distance (Å)	Clash overlap (Å)
1:A:249:LEU:HD23	1:A:416:ALA:HB2	1.35	1.04
1:B:249:LEU:HD23	1:B:416:ALA:HB2	1.37	1.02
1:A:293:THR:O	1:A:397:VAL:HG23	1.68	0.93
1:B:293:THR:O	1:B:397:VAL:HG23	1.71	0.89
1:A:365:GLN:O	1:A:397:VAL:HG13	1.87	0.75
1:A:56:ARG:HH11	1:A:242:HIS:HB3	1.52	0.75
1:A:397:VAL:HG22	3:A:771:HOH:O	1.85	0.74
1:B:365:GLN:O	1:B:397:VAL:HG13	1.88	0.73
1:B:397:VAL:HG22	3:B:794:HOH:O	1.89	0.72
1:B:133:THR:HB	2:B:1:CS5:H3	1.72	0.71
1:A:63:MET:HG2	1:A:151:GLY:HA2	1.72	0.70
1:A:133:THR:HB	2:A:1:CS5:H3	1.75	0.69
1:B:129:TYR:OH	1:B:136:LYS:HD2	1.93	0.69
1:B:126:LYS:HE3	1:B:141:LEU:HD12	1.73	0.69
1:B:210:LEU:HD23	1:B:211:PHE:N	2.10	0.66
1:B:362:LEU:H	1:B:365:GLN:HE21	1.42	0.66
1:A:210:LEU:HD23	1:A:211:PHE:N	2.12	0.65
1:A:249:LEU:HD23	1:A:416:ALA:CB	2.18	0.65
1:B:306:VAL:HG12	1:B:310:LYS:HE3	1.80	0.64
1:A:56:ARG:NH1	1:A:242:HIS:HB3	2.12	0.63
1:B:425:GLU:OE1	1:B:425:GLU:N	2.27	0.63
1:A:126:LYS:HD2	1:A:141:LEU:HD12	1.81	0.63
1:A:362:LEU:H	1:A:365:GLN:HE21	1.46	0.62
1:B:138:GLU:HB3	1:B:165:GLU:HB2	1.82	0.61
1:B:375:THR:O	1:B:375:THR:HG22	2.00	0.61
1:A:306:VAL:HG22	1:A:310:LYS:HE3	1.83	0.60
1:B:63:MET:HG2	1:B:151:GLY:HA2	1.84	0.60
1:B:306:VAL:CG1	1:B:310:LYS:HE3	2.32	0.59
1:B:124:LEU:HG	1:B:142:GLY:HA2	1.84	0.59
1:B:362:LEU:HB3	1:B:363:PRO:HD2	1.82	0.59
1:B:249:LEU:HD23	1:B:416:ALA:CB	2.23	0.58
1:B:384:ALA:HB1	1:B:397:VAL:HG21	1.86	0.58
1:A:355:GLN:HG3	1:A:434:PRO:HB2	1.86	0.57
1:B:260:TYR:HB3	1:B:413:ILE:HD11	1.85	0.57
1:A:56:ARG:HB3	1:A:242:HIS:HB3	1.86	0.57
1:B:276:MET:HE1	1:B:300:LYS:HG2	1.86	0.57
1:A:362:LEU:HB3	1:A:363:PRO:HD2	1.86	0.57

Continued on next page...

Continued from previous page...

Atom-1	Atom-2	Interatomic distance (Å)	Clash overlap (Å)
1:A:321:GLY:C	1:A:327:GLN:HG2	2.26	0.56
1:A:124:LEU:HG	1:A:142:GLY:HA2	1.87	0.56
1:A:384:ALA:HB1	1:A:397:VAL:HG21	1.88	0.56
1:B:362:LEU:H	1:B:365:GLN:NE2	2.03	0.56
1:A:362:LEU:H	1:A:365:GLN:NE2	2.02	0.56
1:B:296:ARG:HB2	1:B:393:VAL:HB	1.87	0.55
1:A:57:ARG:O	1:A:242:HIS:HB2	2.07	0.55
1:B:106:HIS:CG	1:B:107:PRO:HD2	2.42	0.55
1:A:57:ARG:HB2	1:A:57:ARG:NH1	2.22	0.55
1:B:355:GLN:HG3	1:B:434:PRO:HB2	1.89	0.55
1:B:276:MET:CE	1:B:300:LYS:HG2	2.37	0.54
1:B:319:PRO:HG3	1:B:327:GLN:NE2	2.23	0.54
1:B:275:LYS:O	1:B:275:LYS:HG2	2.07	0.53
1:A:260:TYR:HB3	1:A:413:ILE:HD11	1.91	0.53
1:B:255:ARG:HD2	1:B:263:ILE:HD11	1.91	0.53
1:B:106:HIS:ND1	1:B:107:PRO:HD2	2.24	0.52
1:A:296:ARG:HB2	1:A:393:VAL:HB	1.91	0.51
1:B:439:ASP:HB3	1:B:442:ASP:OD2	2.11	0.51
1:B:321:GLY:C	1:B:327:GLN:HG2	2.32	0.50
1:B:126:LYS:HE3	1:B:141:LEU:CD1	2.41	0.50
1:A:328:LEU:O	1:A:328:LEU:HD12	2.11	0.50
1:A:275:LYS:HG2	1:A:275:LYS:O	2.12	0.50
1:B:372:ASP:HB2	1:B:380:CYS:SG	2.52	0.50
1:B:337:PRO:O	1:B:340:ILE:HG12	2.12	0.49
1:A:425:GLU:HG2	3:A:775:HOH:O	2.11	0.49
1:A:372:ASP:HB2	1:A:380:CYS:SG	2.53	0.48
1:A:95:GLY:O	2:A:1:CS5:H31	2.14	0.48
1:A:355:GLN:CG	1:A:434:PRO:HB2	2.44	0.48
1:B:131:PRO:HG2	1:B:131:PRO:O	2.14	0.48
1:A:337:PRO:O	1:A:340:ILE:HG12	2.14	0.47
1:B:303:GLU:O	1:B:307:LYS:HG3	2.14	0.47
1:A:361:ILE:HD13	1:A:398:ILE:HD12	1.97	0.47
1:B:396:ALA:O	1:B:400:GLU:HG3	2.15	0.47
1:A:131:PRO:HG2	1:A:131:PRO:O	2.14	0.47
1:B:62:GLU:H	1:B:62:GLU:CD	2.18	0.47
1:B:186:GLU:OE2	1:B:256:ARG:NH2	2.48	0.46
1:B:361:ILE:HD13	1:B:398:ILE:HD12	1.98	0.46
1:A:210:LEU:HD23	1:A:210:LEU:C	2.36	0.46
1:B:355:GLN:CG	1:B:434:PRO:HB2	2.46	0.46
1:A:57:ARG:NH1	1:A:57:ARG:CB	2.79	0.45
1:A:439:ASP:HB3	1:A:442:ASP:OD2	2.17	0.45

Continued on next page...

Continued from previous page...

Atom-1	Atom-2	Interatomic distance (Å)	Clash overlap (Å)
1:B:210:LEU:HD23	1:B:210:LEU:C	2.37	0.45
1:A:306:VAL:CG2	1:A:310:LYS:HE3	2.46	0.45
1:A:319:PRO:HG3	1:A:327:GLN:NE2	2.31	0.45
1:B:299:LYS:O	1:B:303:GLU:HG3	2.16	0.45
1:A:299:LYS:O	1:A:303:GLU:HG3	2.17	0.45
1:A:196:PRO:HB2	1:A:199:ASP:OD2	2.16	0.45
1:A:302:PHE:O	1:A:306:VAL:HG12	2.17	0.44
1:B:223:ASN:OD1	1:B:226:GLU:HG3	2.16	0.44
1:B:196:PRO:HB2	1:B:199:ASP:OD2	2.17	0.44
1:B:253:PRO:HG3	3:B:691:HOH:O	2.18	0.44
1:A:306:VAL:O	1:A:310:LYS:HG3	2.18	0.44
1:A:283:TYR:HA	1:A:284:ASP:HA	1.71	0.44
1:A:57:ARG:HH11	1:A:57:ARG:CB	2.31	0.44
1:B:305:ALA:O	1:B:309:ILE:HG13	2.17	0.44
1:B:152:PRO:HG2	1:B:154:VAL:HG22	2.00	0.44
1:B:423:HIS:HD2	1:B:424:ASP:O	2.01	0.44
1:A:328:LEU:C	1:A:328:LEU:HD12	2.38	0.43
1:A:186:GLU:OE2	1:A:256:ARG:NH2	2.52	0.43
1:B:328:LEU:HD12	1:B:328:LEU:O	2.19	0.43
1:A:75:TYR:O	1:A:91:LEU:HD12	2.19	0.43
1:A:305:ALA:O	1:A:309:ILE:HG13	2.19	0.42
1:B:283:TYR:HA	1:B:284:ASP:HA	1.69	0.42
1:A:134:GLN:NE2	1:A:134:GLN:O	2.53	0.42
1:A:76:TYR:CD1	1:A:89:ASN:HB3	2.54	0.42
1:B:306:VAL:O	1:B:310:LYS:HG3	2.20	0.42
1:B:296:ARG:HB3	1:B:388:SER:HB2	2.01	0.42
1:A:253:PRO:HG3	3:A:718:HOH:O	2.20	0.42
1:A:319:PRO:HG3	1:A:327:GLN:HE21	1.85	0.42
1:A:321:GLY:HA3	1:A:327:GLN:HG2	2.01	0.41
1:B:328:LEU:HD12	1:B:328:LEU:C	2.40	0.41
1:B:134:GLN:CD	1:B:134:GLN:C	2.78	0.41
1:B:134:GLN:O	1:B:134:GLN:CD	2.59	0.41
1:B:214:GLN:OE1	1:B:244:LEU:HD22	2.20	0.41
1:A:396:ALA:O	1:A:400:GLU:HG3	2.20	0.41
1:B:105:PRO:HD3	1:B:112:TYR:CZ	2.56	0.41
1:A:423:HIS:HD2	1:A:424:ASP:O	2.03	0.41
1:A:134:GLN:C	1:A:134:GLN:CD	2.79	0.41
1:A:224:GLN:O	1:A:228:LEU:HG	2.21	0.40
1:A:266:ARG:HB3	1:A:347:TYR:HB2	2.04	0.40
1:B:76:TYR:CD1	1:B:89:ASN:HB3	2.56	0.40
1:A:254:ILE:O	1:A:411:LYS:HE2	2.22	0.40

There are no symmetry-related clashes.

5.3 Torsion angles [i](#)

5.3.1 Protein backbone [i](#)

In the following table, the Percentiles column shows the percent Ramachandran outliers of the chain as a percentile score with respect to all X-ray entries followed by that with respect to entries of similar resolution.

The Analysed column shows the number of residues for which the backbone conformation was analysed, and the total number of residues.

Mol	Chain	Analysed	Favoured	Allowed	Outliers	Percentiles	
1	A	393/414 (95%)	381 (97%)	10 (2%)	2 (0%)	29	15
1	B	387/414 (94%)	376 (97%)	9 (2%)	2 (0%)	29	15
All	All	780/828 (94%)	757 (97%)	19 (2%)	4 (0%)	29	15

All (4) Ramachandran outliers are listed below:

Mol	Chain	Res	Type
1	A	54	PRO
1	B	376	SER
1	A	131	PRO
1	B	131	PRO

5.3.2 Protein sidechains [i](#)

In the following table, the Percentiles column shows the percent sidechain outliers of the chain as a percentile score with respect to all X-ray entries followed by that with respect to entries of similar resolution.

The Analysed column shows the number of residues for which the sidechain conformation was analysed, and the total number of residues.

Mol	Chain	Analysed	Rotameric	Outliers	Percentiles	
1	A	334/355 (94%)	312 (93%)	22 (7%)	16	5
1	B	331/355 (93%)	309 (93%)	22 (7%)	16	5
All	All	665/710 (94%)	621 (93%)	44 (7%)	16	5

All (44) residues with a non-rotameric sidechain are listed below:

Mol	Chain	Res	Type
1	A	84	PRO
1	A	85	PRO
1	A	105	PRO
1	A	107	PRO
1	A	131	PRO
1	A	149	PRO
1	A	152	PRO
1	A	172	ASN
1	A	190	PRO
1	A	196	PRO
1	A	208	PRO
1	A	221	PRO
1	A	253	PRO
1	A	258	TRP
1	A	298	PRO
1	A	319	PRO
1	A	328	LEU
1	A	337	PRO
1	A	342	PRO
1	A	363	PRO
1	A	369	PRO
1	A	434	PRO
1	B	84	PRO
1	B	85	PRO
1	B	105	PRO
1	B	107	PRO
1	B	131	PRO
1	B	134	GLN
1	B	149	PRO
1	B	152	PRO
1	B	190	PRO
1	B	196	PRO
1	B	208	PRO
1	B	221	PRO
1	B	253	PRO
1	B	258	TRP
1	B	298	PRO
1	B	319	PRO
1	B	328	LEU
1	B	337	PRO
1	B	342	PRO
1	B	363	PRO
1	B	369	PRO

Continued on next page...

Continued from previous page...

Mol	Chain	Res	Type
1	B	434	PRO

Some sidechains can be flipped to improve hydrogen bonding and reduce clashes. All (9) such sidechains are listed below:

Mol	Chain	Res	Type
1	A	134	GLN
1	A	172	ASN
1	A	327	GLN
1	A	365	GLN
1	A	423	HIS
1	B	89	ASN
1	B	172	ASN
1	B	365	GLN
1	B	423	HIS

5.3.3 RNA [i](#)

There are no RNA molecules in this entry.

5.4 Non-standard residues in protein, DNA, RNA chains [i](#)

There are no non-standard protein/DNA/RNA residues in this entry.

5.5 Carbohydrates [i](#)

There are no carbohydrates in this entry.

5.6 Ligand geometry [i](#)

2 ligands are modelled in this entry.

In the following table, the Counts columns list the number of bonds (or angles) for which Mogul statistics could be retrieved, the number of bonds (or angles) that are observed in the model and the number of bonds (or angles) that are defined in the Chemical Component Dictionary. The Link column lists molecule types, if any, to which the group is linked. The Z score for a bond length (or angle) is the number of standard deviations the observed value is removed from the expected value. A bond length (or angle) with $|Z| > 2$ is considered an outlier worth inspection. RMSZ is the root-mean-square of all Z scores of the bond lengths (or angles).

Mol	Type	Chain	Res	Link	Bond lengths			Bond angles		
					Counts	RMSZ	# Z > 2	Counts	RMSZ	# Z > 2
2	CS5	A	1	-	44,44,44	1.69	18 (40%)	58,59,59	1.10	5 (8%)
2	CS5	B	1	-	44,44,44	1.64	13 (29%)	58,59,59	1.11	5 (8%)

In the following table, the Chirals column lists the number of chiral outliers, the number of chiral centers analysed, the number of these observed in the model and the number defined in the Chemical Component Dictionary. Similar counts are reported in the Torsion and Rings columns. '-' means no outliers of that kind were identified.

Mol	Type	Chain	Res	Link	Chirals	Torsions	Rings
2	CS5	A	1	-	1/1/5/7	2/38/38/38	0/3/3/3
2	CS5	B	1	-	1/1/5/7	2/38/38/38	0/3/3/3

All (31) bond length outliers are listed below:

Mol	Chain	Res	Type	Atoms	Z	Observed(Å)	Ideal(Å)
2	B	1	CS5	C24-C23	3.19	1.43	1.37
2	A	1	CS5	C22-C23	3.12	1.42	1.37
2	A	1	CS5	C24-C23	3.10	1.42	1.37
2	B	1	CS5	C24-C25	3.10	1.42	1.37
2	B	1	CS5	C26-C25	3.05	1.42	1.37
2	A	1	CS5	C24-C25	3.03	1.42	1.37
2	B	1	CS5	C22-C23	3.01	1.42	1.37
2	A	1	CS5	C26-C25	2.86	1.42	1.37
2	A	1	CS5	C31-C30	2.81	1.43	1.38
2	A	1	CS5	C5-C6	2.75	1.43	1.39
2	B	1	CS5	C31-C30	2.75	1.43	1.38
2	B	1	CS5	C5-C6	2.65	1.43	1.39
2	A	1	CS5	C5-C4	2.52	1.43	1.39
2	B	1	CS5	C3-C4	2.48	1.43	1.39
2	A	1	CS5	C3-C4	2.45	1.43	1.39
2	A	1	CS5	C1-C6	2.42	1.43	1.39
2	B	1	CS5	C5-C4	2.40	1.43	1.39
2	A	1	CS5	C3-C2	2.36	1.42	1.39
2	B	1	CS5	C1-C6	2.35	1.42	1.39
2	B	1	CS5	C3-C2	2.34	1.42	1.39
2	A	1	CS5	C29-C30	2.29	1.43	1.38
2	A	1	CS5	C1-C2	2.27	1.42	1.39
2	A	1	CS5	C31-C20	2.23	1.43	1.39
2	A	1	CS5	C28-C29	2.23	1.43	1.38
2	B	1	CS5	C26-C21	2.22	1.43	1.39
2	B	1	CS5	C1-C2	2.21	1.42	1.39

Continued on next page...

Continued from previous page...

Mol	Chain	Res	Type	Atoms	Z	Observed(Å)	Ideal(Å)
2	A	1	CS5	C22-C21	2.14	1.43	1.39
2	A	1	CS5	C26-C21	2.10	1.42	1.39
2	A	1	CS5	C27-C20	2.06	1.43	1.38
2	B	1	CS5	C22-C21	2.03	1.42	1.39
2	A	1	CS5	C28-C27	2.01	1.43	1.38

All (10) bond angle outliers are listed below:

Mol	Chain	Res	Type	Atoms	Z	Observed(°)	Ideal(°)
2	B	1	CS5	C15-N2-C14	-2.86	117.81	123.01
2	B	1	CS5	C26-C25-C24	-2.85	119.92	123.52
2	A	1	CS5	C24-C23-C22	-2.75	120.05	123.52
2	A	1	CS5	C26-C25-C24	-2.73	120.07	123.52
2	B	1	CS5	C24-C23-C22	-2.68	120.13	123.52
2	A	1	CS5	C15-N2-C14	-2.55	118.37	123.01
2	B	1	CS5	C25-C24-C23	2.44	119.94	116.13
2	A	1	CS5	C25-C24-C23	2.44	119.93	116.13
2	A	1	CS5	C32-O4-C30	-2.21	112.72	117.51
2	B	1	CS5	C32-O4-C30	-2.03	113.11	117.51

All (2) chirality outliers are listed below:

Mol	Chain	Res	Type	Atom
2	A	1	CS5	C16
2	B	1	CS5	C16

All (4) torsion outliers are listed below:

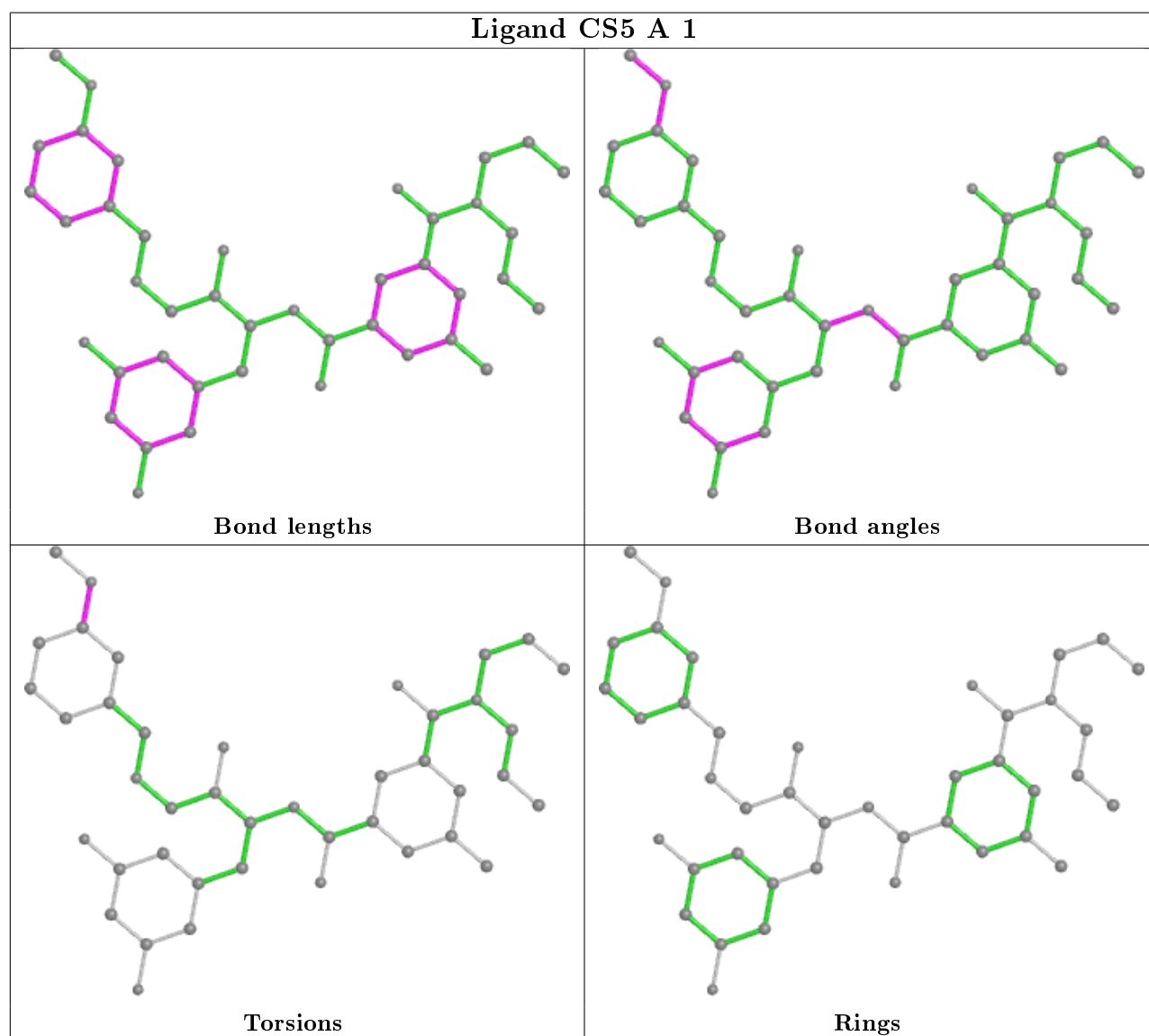
Mol	Chain	Res	Type	Atoms
2	A	1	CS5	C29-C30-O4-C32
2	A	1	CS5	C31-C30-O4-C32
2	B	1	CS5	C31-C30-O4-C32
2	B	1	CS5	C29-C30-O4-C32

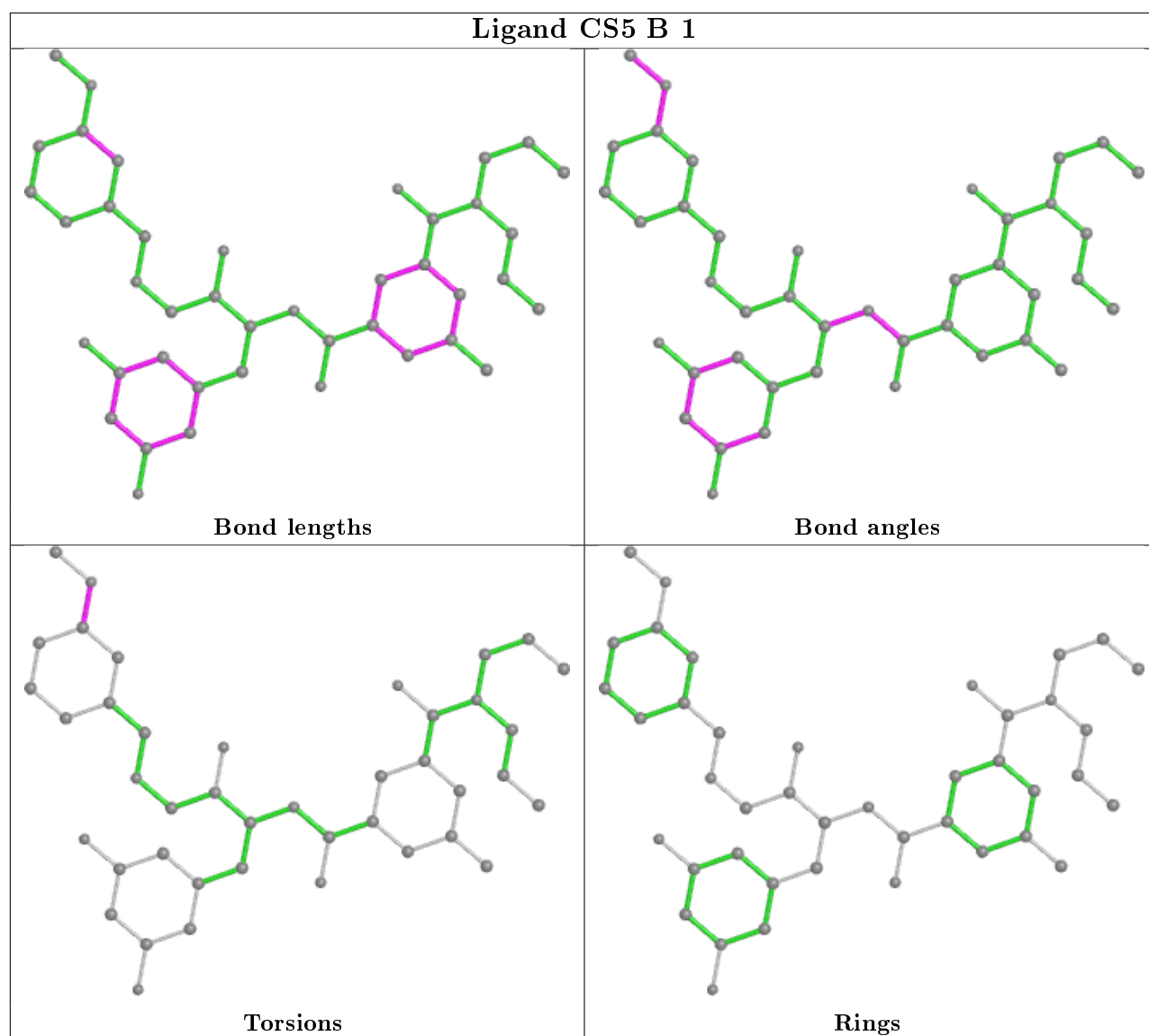
There are no ring outliers.

2 monomers are involved in 3 short contacts:

Mol	Chain	Res	Type	Clashes	Symm-Clashes
2	A	1	CS5	2	0
2	B	1	CS5	1	0

The following is a two-dimensional graphical depiction of Mogul quality analysis of bond lengths, bond angles, torsion angles, and ring geometry for all instances of the Ligand of Interest. In addition, ligands with molecular weight > 250 and outliers as shown on the validation Tables will also be included. For torsion angles, if less than 5% of the Mogul distribution of torsion angles is within 10 degrees of the torsion angle in question, then that torsion angle is considered an outlier. Any bond that is central to one or more torsion angles identified as an outlier by Mogul will be highlighted in the graph. For rings, the root-mean-square deviation (RMSD) between the ring in question and similar rings identified by Mogul is calculated over all ring torsion angles. If the average RMSD is greater than 60 degrees and the minimal RMSD between the ring in question and any Mogul-identified rings is also greater than 60 degrees, then that ring is considered an outlier. The outliers are highlighted in purple. The color gray indicates Mogul did not find sufficient equivalents in the CSD to analyse the geometry.





5.7 Other polymers [\(i\)](#)

There are no such residues in this entry.

5.8 Polymer linkage issues [\(i\)](#)

There are no chain breaks in this entry.

6 Fit of model and data

6.1 Protein, DNA and RNA chains

In the following table, the column labelled ‘#RSRZ> 2’ contains the number (and percentage) of RSRZ outliers, followed by percent RSRZ outliers for the chain as percentile scores relative to all X-ray entries and entries of similar resolution. The OWAB column contains the minimum, median, 95th percentile and maximum values of the occupancy-weighted average B-factor per residue. The column labelled ‘Q< 0.9’ lists the number of (and percentage) of residues with an average occupancy less than 0.9.

Mol	Chain	Analysed	<RSRZ>	#RSRZ>2	OWAB(Å ²)	Q<0.9
1	A	395/414 (95%)	0.19	17 (4%) 35 29	7, 13, 31, 76	0
1	B	389/414 (93%)	0.13	14 (3%) 42 37	8, 13, 29, 51	0
All	All	784/828 (94%)	0.16	31 (3%) 38 32	7, 13, 30, 76	0

All (31) RSRZ outliers are listed below:

Mol	Chain	Res	Type	RSRZ
1	A	53	GLU	11.5
1	A	373	VAL	10.2
1	B	375	THR	10.1
1	B	373	VAL	10.1
1	A	447	ILE	8.2
1	A	56	ARG	6.9
1	B	58	GLY	6.2
1	A	374	ALA	5.3
1	A	375	THR	5.2
1	B	374	ALA	4.6
1	B	59	SER	4.6
1	A	110	HIS	4.4
1	A	54	PRO	4.2
1	B	441	GLU	3.9
1	B	372	ASP	3.5
1	B	206	HIS	3.4
1	B	224	GLN	3.3
1	B	134	GLN	3.3
1	A	224	GLN	3.2
1	A	134	GLN	3.1
1	A	55	GLY	3.1
1	A	441	GLU	3.0
1	A	57	ARG	2.9
1	A	372	ASP	2.7

Continued on next page...

Continued from previous page...

Mol	Chain	Res	Type	RSRZ
1	B	153	ASN	2.3
1	A	58	GLY	2.3
1	B	275	LYS	2.2
1	A	206	HIS	2.2
1	B	438	LEU	2.1
1	B	371	GLU	2.1
1	A	397	VAL	2.1

6.2 Non-standard residues in protein, DNA, RNA chains [i](#)

There are no non-standard protein/DNA/RNA residues in this entry.

6.3 Carbohydrates [i](#)

There are no carbohydrates in this entry.

6.4 Ligands [i](#)

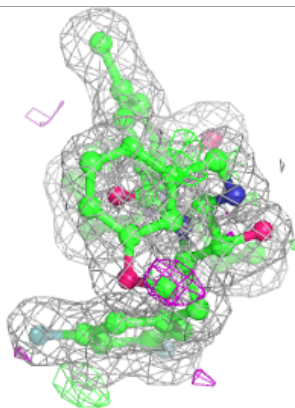
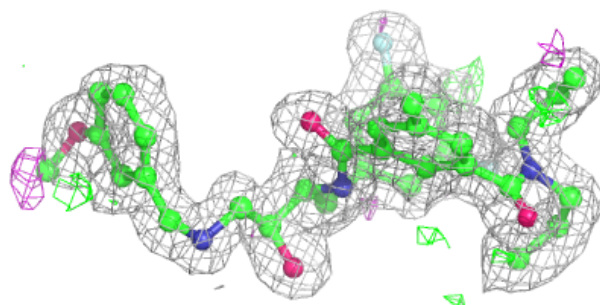
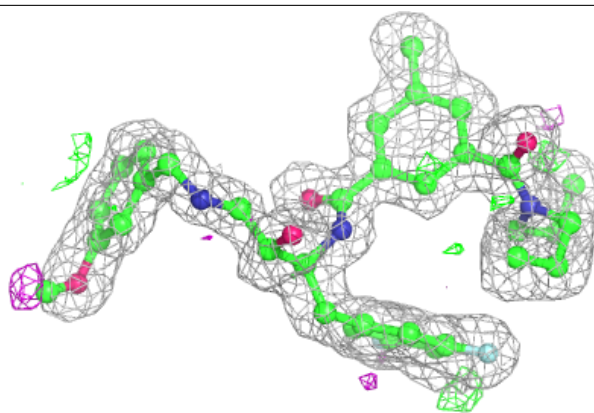
In the following table, the Atoms column lists the number of modelled atoms in the group and the number defined in the chemical component dictionary. The B-factors column lists the minimum, median, 95th percentile and maximum values of B factors of atoms in the group. The column labelled 'Q< 0.9' lists the number of atoms with occupancy less than 0.9.

Mol	Type	Chain	Res	Atoms	RSCC	RSR	B-factors(Å ²)	Q<0.9
2	CS5	A	1	42/42	0.92	0.10	9,14,19,24	0
2	CS5	B	1	42/42	0.93	0.10	8,13,16,20	0

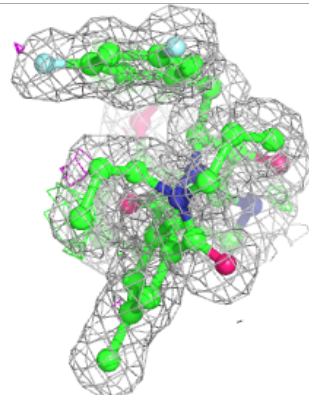
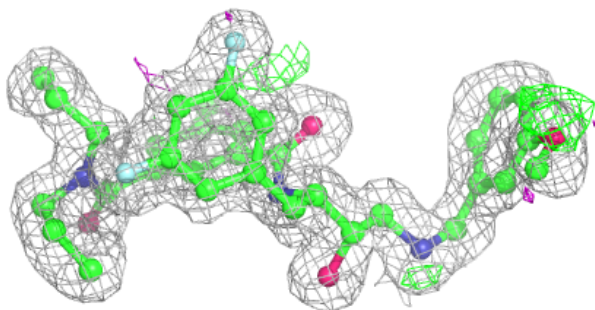
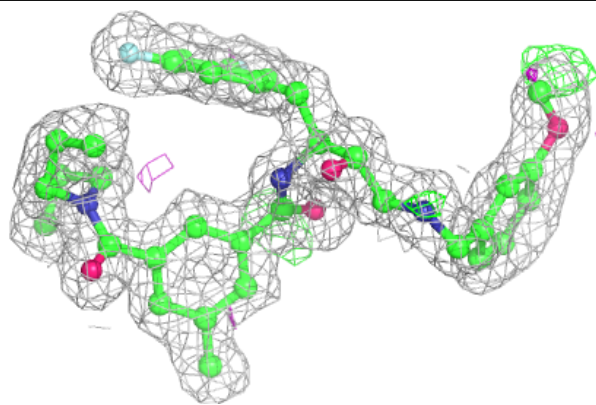
The following is a graphical depiction of the model fit to experimental electron density of all instances of the Ligand of Interest. In addition, ligands with molecular weight > 250 and outliers as shown on the geometry validation Tables will also be included. Each fit is shown from different orientation to approximate a three-dimensional view.

Electron density around CS5 A 1:

$2mF_o-DF_c$ (at 0.7 rmsd) in gray
 mF_o-DF_c (at 3 rmsd) in purple (negative)
and green (positive)

**Electron density around CS5 B 1:**

$2mF_o-DF_c$ (at 0.7 rmsd) in gray
 mF_o-DF_c (at 3 rmsd) in purple (negative)
and green (positive)



6.5 Other polymers

There are no such residues in this entry.