



Full wwPDB X-ray Structure Validation Report ⓘ

May 15, 2020 – 06:47 pm BST

PDB ID : 3JU8
Title : Crystal Structure of Succinylglutamic Semialdehyde Dehydrogenase from *Pseudomonas aeruginosa*.
Authors : Kim, Y.; Li, H.; Buck, K.; Joachimiak, A.; Midwest Center for Structural Genomics (MCSG)
Deposited on : 2009-09-14
Resolution : 1.82 Å(reported)

This is a Full wwPDB X-ray Structure Validation Report for a publicly released PDB entry.

We welcome your comments at validation@mail.wwpdb.org

A user guide is available at

<https://www.wwpdb.org/validation/2017/XrayValidationReportHelp>

with specific help available everywhere you see the ⓘ symbol.

The following versions of software and data (see [references ⓘ](#)) were used in the production of this report:

MolProbity : 4.02b-467
Mogul : 1.8.5 (274361), CSD as541be (2020)
Xtriage (Phenix) : 1.13
EDS : 2.11
buster-report : 1.1.7 (2018)
Percentile statistics : 20191225.v01 (using entries in the PDB archive December 25th 2019)
Refmac : 5.8.0158
CCP4 : 7.0.044 (Gargrove)
Ideal geometry (proteins) : Engh & Huber (2001)
Ideal geometry (DNA, RNA) : Parkinson et al. (1996)
Validation Pipeline (wwPDB-VP) : 2.11

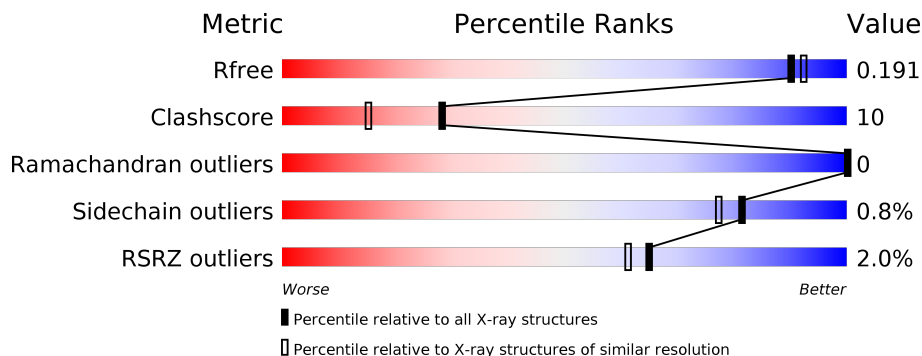
1 Overall quality at a glance

The following experimental techniques were used to determine the structure:

X-RAY DIFFRACTION

The reported resolution of this entry is 1.82 Å.

Percentile scores (ranging between 0-100) for global validation metrics of the entry are shown in the following graphic. The table shows the number of entries on which the scores are based.



Metric	Whole archive (#Entries)	Similar resolution (#Entries, resolution range(Å))
R_{free}	130704	7484 (1.84-1.80)
Clashscore	141614	8401 (1.84-1.80)
Ramachandran outliers	138981	8290 (1.84-1.80)
Sidechain outliers	138945	8290 (1.84-1.80)
RSRZ outliers	127900	7371 (1.84-1.80)

The table below summarises the geometric issues observed across the polymeric chains and their fit to the electron density. The red, orange, yellow and green segments on the lower bar indicate the fraction of residues that contain outliers for ≥ 3 , 2, 1 and 0 types of geometric quality criteria respectively. A grey segment represents the fraction of residues that are not modelled. The numeric value for each fraction is indicated below the corresponding segment, with a dot representing fractions $\leq 5\%$. The upper red bar (where present) indicates the fraction of residues that have poor fit to the electron density. The numeric value is given above the bar.

Mol	Chain	Length	Quality of chain
1	A	490	 2% 83% 15%
1	B	490	 2% 87% 11%

The following table lists non-polymeric compounds, carbohydrate monomers and non-standard residues in protein, DNA, RNA chains that are outliers for geometric or electron-density-fit criteria:

Mol	Type	Chain	Res	Chirality	Geometry	Clashes	Electron density
2	NAD	A	501	X	-	-	-
2	NAD	B	501	X	-	-	-
4	SIN	A	504	-	-	X	-
5	GOL	A	488	-	-	X	-

2 Entry composition

There are 8 unique types of molecules in this entry. The entry contains 8843 atoms, of which 0 are hydrogens and 0 are deuteriums.

In the tables below, the ZeroOcc column contains the number of atoms modelled with zero occupancy, the AltConf column contains the number of residues with at least one atom in alternate conformation and the Trace column contains the number of residues modelled with at most 2 atoms.

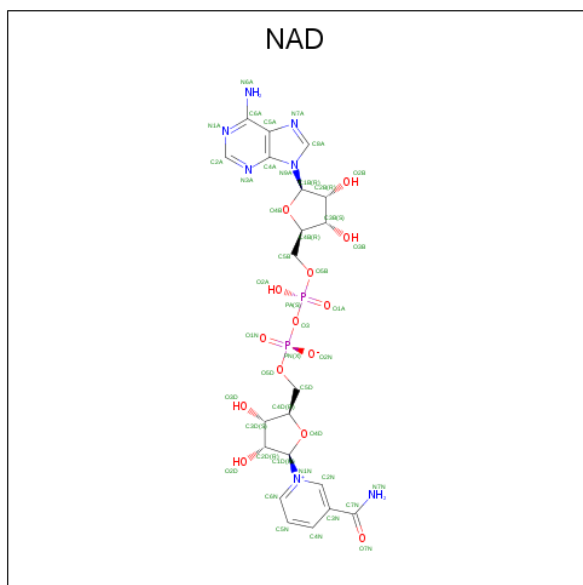
- Molecule 1 is a protein called Succinylglutamic semialdehyde dehydrogenase.

Mol	Chain	Residues	Atoms						ZeroOcc	AltConf	Trace
			Total	C	N	O	S	Se			
1	A	486	3943	2489	711	731	6	6	0	37	0
1	B	485	3784	2396	673	704	6	5	0	19	0

There are 8 discrepancies between the modelled and reference sequences:

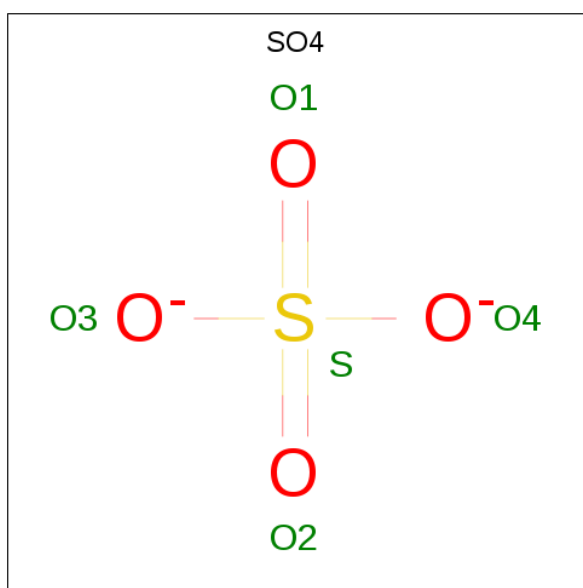
Chain	Residue	Modelled	Actual	Comment	Reference
A	-2	SER	-	EXPRESSION TAG	UNP O50174
A	-1	ASN	-	EXPRESSION TAG	UNP O50174
A	0	ALA	-	EXPRESSION TAG	UNP O50174
A	1	MSE	-	EXPRESSION TAG	UNP O50174
B	-2	SER	-	EXPRESSION TAG	UNP O50174
B	-1	ASN	-	EXPRESSION TAG	UNP O50174
B	0	ALA	-	EXPRESSION TAG	UNP O50174
B	1	MSE	-	EXPRESSION TAG	UNP O50174

- Molecule 2 is NICOTINAMIDE-ADENINE-DINUCLEOTIDE (three-letter code: NAD) (formula: $C_{21}H_{27}N_7O_{14}P_2$).



Mol	Chain	Residues	Atoms				ZeroOcc	AltConf	
			Total	C	N	O			P
2	A	1	44	21	7	14	2	0	0
2	B	1	44	21	7	14	2	0	0

- Molecule 3 is SULFATE ION (three-letter code: SO4) (formula: O₄S).



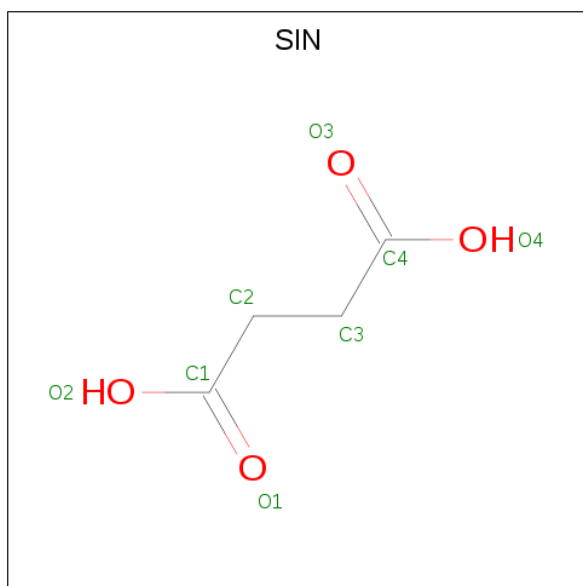
Mol	Chain	Residues	Atoms		ZeroOcc	AltConf
			Total	O S		
3	A	1	5	4 1	0	0
3	A	1	5	4 1	0	0

Continued on next page...

Continued from previous page...

Mol	Chain	Residues	Atoms	ZeroOcc	AltConf
3	A	1	Total O S 5 4 1	0	0
3	A	1	Total O S 5 4 1	0	0
3	A	1	Total O S 5 4 1	0	0
3	B	1	Total O S 5 4 1	0	0
3	B	1	Total O S 5 4 1	0	0
3	B	1	Total O S 5 4 1	0	0

- Molecule 4 is SUCCINIC ACID (three-letter code: SIN) (formula: C₄H₆O₄).



Mol	Chain	Residues	Atoms	ZeroOcc	AltConf
4	A	1	Total C O 8 4 4	0	0

- Molecule 5 is GLYCEROL (three-letter code: GOL) (formula: C₃H₈O₃).



Mol	Chain	Residues	Atoms	ZeroOcc	AltConf
5	A	1	Total C O 6 3 3	0	0
5	A	1	Total C O 6 3 3	0	0
5	A	1	Total C O 6 3 3	0	0
5	A	1	Total C O 6 3 3	0	0
5	A	1	Total C O 6 3 3	0	0
5	A	1	Total C O 6 3 3	0	0
5	A	1	Total C O 6 3 3	0	0
5	B	1	Total C O 6 3 3	0	0

- Molecule 6 is CHLORIDE ION (three-letter code: CL) (formula: Cl).

Mol	Chain	Residues	Atoms	ZeroOcc	AltConf
6	B	2	Total Cl 2 2	0	0

- Molecule 7 is MAGNESIUM ION (three-letter code: MG) (formula: Mg).

Mol	Chain	Residues	Atoms	ZeroOcc	AltConf
7	B	1	Total Mg 1 1	0	0

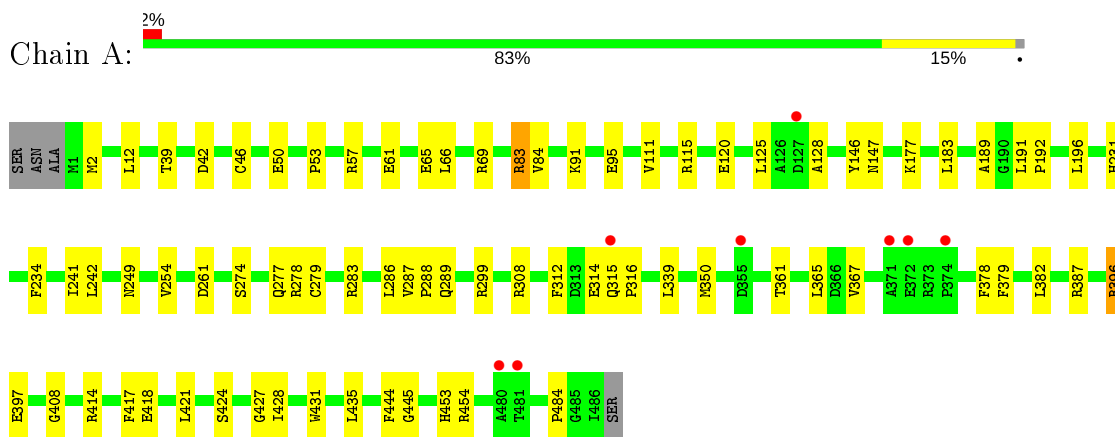
- Molecule 8 is water.

Mol	Chain	Residues	Atoms	ZeroOcc	AltConf
8	A	507	Total O 507 507	0	0
8	B	422	Total O 422 422	0	0

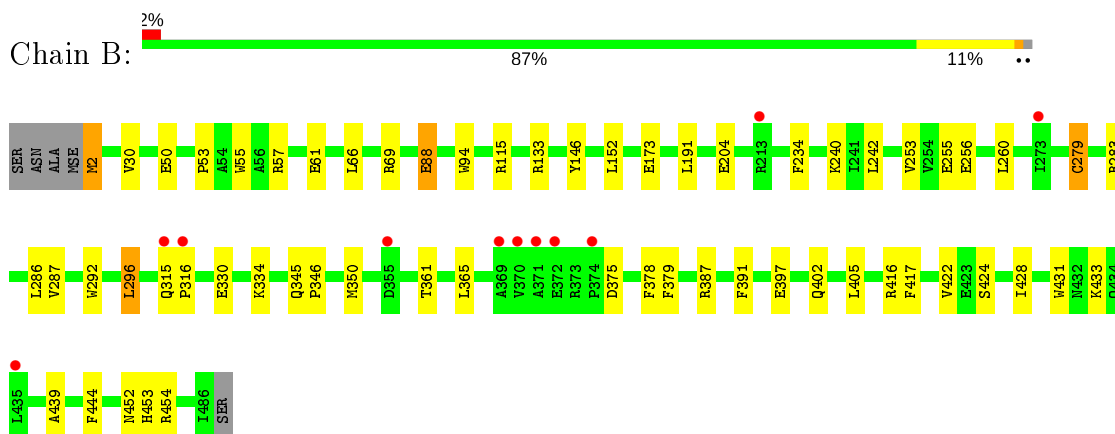
3 Residue-property plots [i](#)

These plots are drawn for all protein, RNA and DNA chains in the entry. The first graphic for a chain summarises the proportions of the various outlier classes displayed in the second graphic. The second graphic shows the sequence view annotated by issues in geometry and electron density. Residues are color-coded according to the number of geometric quality criteria for which they contain at least one outlier: green = 0, yellow = 1, orange = 2 and red = 3 or more. A red dot above a residue indicates a poor fit to the electron density ($RSRZ > 2$). Stretches of 2 or more consecutive residues without any outlier are shown as a green connector. Residues present in the sample, but not in the model, are shown in grey.

- Molecule 1: Succinylglutamic semialdehyde dehydrogenase



- Molecule 1: Succinylglutamic semialdehyde dehydrogenase



4 Data and refinement statistics

Property	Value	Source
Space group	C 1 2 1	Depositor
Cell constants a, b, c, α , β , γ	137.12Å 48.03Å 187.13Å 90.00° 107.43° 90.00°	Depositor
Resolution (Å)	32.77 – 1.82 32.78 – 1.82	Depositor EDS
% Data completeness (in resolution range)	99.3 (32.77-1.82) 99.2 (32.78-1.82)	Depositor EDS
R_{merge}	(Not available)	Depositor
R_{sym}	0.06	Depositor
$\langle I/\sigma(I) \rangle$ ¹	2.27 (at 1.82Å)	Xtrriage
Refinement program	PHENIX (phenix.refine: 1.4_138)	Depositor
R, R_{free}	0.158 , 0.196 0.153 , 0.191	Depositor DCC
R_{free} test set	5215 reflections (5.00%)	wwPDB-VP
Wilson B-factor (Å ²)	24.0	Xtrriage
Anisotropy	0.738	Xtrriage
Bulk solvent k_{sol} (e/Å ³), B_{sol} (Å ²)	0.37 , 56.6	EDS
L-test for twinning ²	$\langle L \rangle = 0.50$, $\langle L^2 \rangle = 0.33$	Xtrriage
Estimated twinning fraction	No twinning to report.	Xtrriage
F_o, F_c correlation	0.97	EDS
Total number of atoms	8843	wwPDB-VP
Average B, all atoms (Å ²)	33.0	wwPDB-VP

Xtrriage's analysis on translational NCS is as follows: *The largest off-origin peak in the Patterson function is 5.62% of the height of the origin peak. No significant pseudotranslation is detected.*

¹Intensities estimated from amplitudes.

²Theoretical values of $\langle |L| \rangle$, $\langle L^2 \rangle$ for acentric reflections are 0.5, 0.333 respectively for untwinned datasets, and 0.375, 0.2 for perfectly twinned datasets.

5 Model quality [i](#)

5.1 Standard geometry [i](#)

Bond lengths and bond angles in the following residue types are not validated in this section: GOL, MG, NAD, CL, SO4, SIN

The Z score for a bond length (or angle) is the number of standard deviations the observed value is removed from the expected value. A bond length (or angle) with $|Z| > 5$ is considered an outlier worth inspection. RMSZ is the root-mean-square of all Z scores of the bond lengths (or angles).

Mol	Chain	Bond lengths		Bond angles	
		RMSZ	# Z >5	RMSZ	# Z >5
1	A	0.65	0/4019	0.70	0/5454
1	B	0.57	0/3862	0.66	1/5250 (0.0%)
All	All	0.62	0/7881	0.68	1/10704 (0.0%)

There are no bond length outliers.

All (1) bond angle outliers are listed below:

Mol	Chain	Res	Type	Atoms	Z	Observed(°)	Ideal(°)
1	B	296	LEU	CA-CB-CG	-5.76	102.05	115.30

There are no chirality outliers.

There are no planarity outliers.

5.2 Too-close contacts [i](#)

In the following table, the Non-H and H(model) columns list the number of non-hydrogen atoms and hydrogen atoms in the chain respectively. The H(added) column lists the number of hydrogen atoms added and optimized by MolProbity. The Clashes column lists the number of clashes within the asymmetric unit, whereas Symm-Clashes lists symmetry related clashes.

Mol	Chain	Non-H	H(model)	H(added)	Clashes	Symm-Clashes
1	A	3943	0	3928	84	0
1	B	3784	0	3759	72	0
2	A	44	0	18	11	0
2	B	44	0	18	6	0
3	A	25	0	0	0	0
3	B	15	0	0	0	0
4	A	8	0	4	5	0
5	A	42	0	56	11	0

Continued on next page...

Continued from previous page...

Mol	Chain	Non-H	H(model)	H(added)	Clashes	Symm-Clashes
5	B	6	0	8	0	0
6	B	2	0	0	0	0
7	B	1	0	0	0	0
8	A	507	0	0	15	0
8	B	422	0	0	14	0
All	All	8843	0	7791	155	0

The all-atom clashscore is defined as the number of clashes found per 1000 atoms (including hydrogen atoms). The all-atom clashscore for this structure is 10.

All (155) close contacts within the same asymmetric unit are listed below, sorted by their clash magnitude.

Atom-1	Atom-2	Interatomic distance (Å)	Clash overlap (Å)
1:B:66[B]:LEU:HD21	1:B:191:LEU:CD1	1.67	1.23
1:A:66:LEU:HD21	1:A:191:LEU:HD13	1.33	1.07
1:B:66[B]:LEU:CD2	1:B:191:LEU:HD12	1.88	1.02
1:B:234:PHE:CD2	1:B:242[B]:LEU:HD21	1.94	1.00
1:B:234:PHE:CE2	1:B:242[B]:LEU:HD21	1.95	1.00
1:B:66[B]:LEU:HD21	1:B:191:LEU:HD12	1.05	1.00
1:A:234:PHE:CD2	1:A:242[B]:LEU:HD21	1.95	1.00
1:A:289:GLN:HG2	5:A:511:GOL:O2	1.64	0.97
1:B:279:CYS:SG	2:B:501:NAD:C4N	2.58	0.92
1:A:279:CYS:SG	2:A:501:NAD:C4N	2.59	0.91
1:B:283[B]:ARG:HD2	8:B:640:HOH:O	1.70	0.89
1:A:279:CYS:HB3	2:A:501:NAD:C6N	2.03	0.88
1:A:66:LEU:CD2	1:A:191:LEU:HD13	2.09	0.82
2:A:501:NAD:H5N	4:A:504:SIN:O1	1.81	0.80
1:A:66:LEU:HD21	1:A:191:LEU:CD1	2.14	0.77
1:A:286[B]:LEU:HD21	1:A:397:GLU:HG2	1.66	0.75
1:A:231:HIS:HE2	5:A:488:GOL:H32	1.49	0.75
8:A:619:HOH:O	1:B:453[B]:HIS:HE1	1.71	0.73
1:A:191:LEU:HD12	1:A:192:PRO:HD2	1.69	0.73
1:A:424[A]:SER:OG	8:A:926:HOH:O	2.06	0.73
1:A:278:ARG:HB3	4:A:504:SIN:H22	1.68	0.73
1:A:279:CYS:SG	4:A:504:SIN:C1	2.77	0.72
1:B:283[B]:ARG:HH21	1:B:378:PHE:H	1.38	0.72
1:B:279:CYS:SG	8:B:927:HOH:O	2.48	0.70
1:B:283[B]:ARG:NH1	1:B:283[B]:ARG:HB3	2.07	0.69
1:A:66:LEU:CD2	1:A:191:LEU:CD1	2.71	0.69
1:A:283[B]:ARG:HD3	8:A:868:HOH:O	1.92	0.68
1:A:279:CYS:SG	2:A:501:NAD:C5N	2.82	0.67

Continued on next page...

Continued from previous page...

Atom-1	Atom-2	Interatomic distance (Å)	Clash overlap (Å)
1:A:350:MSE:HG3	1:A:361:THR:O	1.93	0.67
1:B:279:CYS:SG	2:B:501:NAD:C5N	2.81	0.67
1:A:191:LEU:HD12	1:A:192:PRO:CD	2.26	0.65
1:B:66[A]:LEU:CD2	1:B:69:ARG:HH11	2.10	0.64
1:B:234:PHE:CG	1:B:242[B]:LEU:HD11	2.32	0.64
5:A:488:GOL:H12	8:A:613:HOH:O	1.95	0.64
1:B:391:PHE:CD2	1:B:416:ARG:HD2	2.33	0.63
1:A:234:PHE:HB2	1:A:242[B]:LEU:HD11	1.80	0.63
1:A:453[B]:HIS:HE1	8:B:667:HOH:O	1.82	0.62
1:B:283[B]:ARG:NH2	1:B:378:PHE:H	1.97	0.61
1:B:279:CYS:HB2	1:B:405:LEU:HD21	1.81	0.61
1:A:279:CYS:HB3	2:A:501:NAD:C5N	2.29	0.61
1:B:173:GLU:HG2	8:B:639:HOH:O	2.00	0.61
1:B:283[B]:ARG:CZ	1:B:283[B]:ARG:HB3	2.32	0.60
1:B:350:MSE:HG3	1:B:361:THR:O	2.02	0.60
1:B:330[B]:GLU:HG2	1:B:334:LYS:HE3	1.84	0.59
1:B:439:ALA:HB3	8:B:886:HOH:O	2.02	0.59
1:A:421[B]:LEU:HD12	8:A:926:HOH:O	2.03	0.59
1:B:191:LEU:HD23	8:B:865:HOH:O	2.03	0.59
1:B:346:PRO:HA	1:B:365:LEU:HD23	1.84	0.58
1:B:2:MSE:HG3	1:B:2:MSE:O	2.00	0.58
1:A:414:ARG:O	1:A:418[B]:GLU:HG2	2.04	0.58
1:B:375:ASP:OD2	1:B:402:GLN:HG2	2.04	0.57
1:B:61[A]:GLU:HG2	8:B:845:HOH:O	2.04	0.57
1:A:57[B]:ARG:HG3	8:A:847:HOH:O	2.05	0.56
1:A:53:PRO:O	1:A:57[A]:ARG:HG3	2.05	0.56
1:A:283[B]:ARG:NH1	1:A:378:PHE:HB2	2.21	0.56
1:A:39[B]:THR:O	1:A:42[B]:ASP:HB2	2.06	0.56
1:A:286[B]:LEU:HD21	1:A:397:GLU:CG	2.33	0.56
1:A:283[B]:ARG:NH1	8:A:729:HOH:O	2.39	0.56
1:B:283[B]:ARG:HH21	1:B:378:PHE:N	2.03	0.55
1:B:253:VAL:HG22	1:B:286[B]:LEU:HD22	1.87	0.55
1:B:428:ILE:HD11	1:B:444:PHE:CD1	2.42	0.55
1:A:261:ASP:OD1	1:A:299[A]:ARG:NH1	2.39	0.54
1:A:39[A]:THR:HG23	8:A:696:HOH:O	2.06	0.54
1:B:424:SER:HB2	8:B:625:HOH:O	2.07	0.54
1:A:57[B]:ARG:HE	1:B:422:VAL:CG1	2.20	0.54
1:A:408:GLY:HA3	1:A:435[B]:LEU:HD21	1.90	0.54
1:B:391:PHE:CZ	1:B:416:ARG:HG3	2.42	0.54
1:A:83[B]:ARG:HD3	8:A:643:HOH:O	2.07	0.53
1:A:234:PHE:CD2	1:A:242[B]:LEU:CD2	2.83	0.53

Continued on next page...

Continued from previous page...

Atom-1	Atom-2	Interatomic distance (Å)	Clash overlap (Å)
1:A:231:HIS:HE2	5:A:488:GOL:C3	2.19	0.53
2:A:501:NAD:H5N	4:A:504:SIN:C1	2.39	0.53
1:A:234:PHE:CB	1:A:242[B]:LEU:HD11	2.39	0.53
1:A:249:ASN:HA	1:A:283[B]:ARG:HG3	1.92	0.52
1:B:286[A]:LEU:HD21	1:B:397:GLU:HG2	1.90	0.52
5:A:488:GOL:H2	8:B:924:HOH:O	2.09	0.52
1:A:61:GLU:HG3	8:A:638:HOH:O	2.10	0.52
1:B:279:CYS:SG	2:B:501:NAD:H4N	2.47	0.52
1:B:279:CYS:HB2	1:B:405:LEU:CD2	2.40	0.52
1:B:260:LEU:C	1:B:260:LEU:HD23	2.30	0.51
5:A:488:GOL:H2	1:B:454:ARG:HH21	1.76	0.51
1:B:115:ARG:NE	8:B:860:HOH:O	2.42	0.51
1:B:428:ILE:HD11	1:B:444:PHE:CE1	2.46	0.51
1:A:428:ILE:HD11	1:A:444:PHE:CE1	2.46	0.51
1:A:241:ILE:HB	1:B:453[B]:HIS:CD2	2.46	0.50
1:B:50[A]:GLU:HG2	8:B:928:HOH:O	2.13	0.49
1:B:152:LEU:HD11	2:B:501:NAD:H5N	1.93	0.49
1:A:453[B]:HIS:CE1	8:B:667:HOH:O	2.61	0.49
1:B:204:GLU:HG3	8:B:838:HOH:O	2.14	0.48
5:A:488:GOL:H11	1:B:452:ASN:HD22	1.77	0.48
1:A:146:TYR:HH	1:A:379:PHE:HD2	1.60	0.48
1:A:279:CYS:CB	2:A:501:NAD:C5N	2.92	0.47
1:A:365[B]:LEU:HD12	1:A:367:VAL:HG13	1.95	0.47
1:A:146:TYR:HE2	2:A:501:NAD:O1N	1.97	0.47
1:B:55:TRP:HH2	1:B:66[B]:LEU:HD23	1.79	0.47
1:B:234:PHE:CE2	1:B:240[A]:LYS:HE3	2.49	0.47
1:A:66:LEU:HD22	1:A:191:LEU:CD1	2.45	0.47
1:A:115[B]:ARG:NH1	5:A:509:GOL:O2	2.40	0.47
1:A:146:TYR:CE2	2:A:501:NAD:O1N	2.68	0.46
1:B:391:PHE:CE2	1:B:416:ARG:HD2	2.49	0.46
1:B:283[B]:ARG:NH2	1:B:378:PHE:CD2	2.83	0.46
1:B:315:GLN:HA	1:B:316:PRO:C	2.35	0.46
1:A:417:PHE:CE1	1:A:431:TRP:HB2	2.50	0.46
1:B:66[A]:LEU:HD21	1:B:69:ARG:HH11	1.79	0.46
1:A:57[B]:ARG:CG	8:A:847:HOH:O	2.63	0.46
1:B:152:LEU:CD1	2:B:501:NAD:H5N	2.45	0.46
1:A:69:ARG:HD2	1:A:189:ALA:O	2.17	0.45
1:A:396[A]:ARG:HG2	8:A:819:HOH:O	2.15	0.45
1:B:283[B]:ARG:HE	1:B:378:PHE:H	1.64	0.45
1:A:287:VAL:O	1:A:387:ARG:HA	2.16	0.45
1:A:147:ASN:HD21	2:A:501:NAD:H6N	1.81	0.45

Continued on next page...

Continued from previous page...

Atom-1	Atom-2	Interatomic distance (Å)	Clash overlap (Å)
5:A:488:GOL:H11	1:B:452:ASN:ND2	2.32	0.44
1:B:234:PHE:CB	1:B:242[B]:LEU:HD11	2.47	0.44
1:A:91[B]:LYS:O	1:A:312:PHE:HB2	2.17	0.44
1:A:315:GLN:HA	1:A:316:PRO:C	2.37	0.44
1:B:417:PHE:CE1	1:B:431:TRP:HB2	2.53	0.44
1:A:254:VAL:O	1:A:288:PRO:HD3	2.18	0.44
1:A:2:MSE:HB3	1:A:2:MSE:HE2	1.84	0.44
1:A:414:ARG:NH1	1:A:418[B]:GLU:OE2	2.49	0.44
1:B:30:VAL:HG11	1:B:88:GLU:HG3	2.00	0.44
1:A:279:CYS:HB3	2:A:501:NAD:N1N	2.32	0.43
1:A:125:LEU:C	1:A:125:LEU:HD23	2.39	0.43
1:A:61:GLU:O	1:A:65[B]:GLU:HG3	2.18	0.43
1:B:256:GLU:HA	1:B:292:TRP:CZ3	2.53	0.43
1:A:120:GLU:N	5:A:509:GOL:H31	2.33	0.43
1:A:53:PRO:O	1:A:57[B]:ARG:HG3	2.18	0.43
1:A:277:GLN:O	1:A:379:PHE:CZ	2.72	0.43
1:A:365[B]:LEU:CD2	1:A:382:LEU:HD11	2.49	0.43
1:B:242[B]:LEU:HD23	1:B:242[B]:LEU:N	2.33	0.42
1:A:421[B]:LEU:HD21	1:B:133:ARG:CD	2.50	0.42
1:B:296:LEU:HG	1:B:296:LEU:O	2.14	0.42
1:A:191:LEU:HD12	1:A:191:LEU:HA	1.63	0.42
1:A:308[B]:ARG:NH2	1:A:314:GLU:OE2	2.52	0.42
1:A:191:LEU:HD23	8:A:766:HOH:O	2.20	0.42
1:A:279:CYS:SG	4:A:504:SIN:O2	2.77	0.42
1:B:345:GLN:HA	1:B:346:PRO:HD3	1.93	0.42
1:A:111:VAL:O	1:A:115[A]:ARG:HG3	2.19	0.41
1:A:12[B]:LEU:HG	8:A:913:HOH:O	2.20	0.41
1:A:84:VAL:HG13	1:A:177:LYS:HD3	2.02	0.41
1:A:57[B]:ARG:CD	1:B:422:VAL:HG11	2.51	0.41
1:A:95:GLU:OE2	1:A:274:SER:OG	2.31	0.41
1:B:279:CYS:HB3	2:B:501:NAD:C3N	2.50	0.41
1:B:234:PHE:HB2	1:B:242[B]:LEU:HD11	2.02	0.41
1:B:57:ARG:HD3	8:B:687:HOH:O	2.21	0.41
1:A:191:LEU:HD23	1:A:196:LEU:HB3	2.01	0.41
1:A:339:LEU:HD13	1:A:365[B]:LEU:HD11	2.02	0.41
1:A:427:GLY:HA3	1:A:445:GLY:O	2.21	0.41
1:B:53:PRO:O	1:B:57:ARG:HB2	2.20	0.41
1:A:46[A]:CYS:O	1:A:50[A]:GLU:HG2	2.21	0.41
1:B:255:GLU:OE1	1:B:416:ARG:HG2	2.21	0.41
1:A:128:ALA:HB2	1:B:433:LYS:HE2	2.03	0.41
1:A:484:PRO:HD2	1:B:94[B]:TRP:CE2	2.56	0.40

Continued on next page...

Continued from previous page...

Atom-1	Atom-2	Interatomic distance (Å)	Clash overlap (Å)
5:A:511:GOL:H11	8:A:757:HOH:O	2.21	0.40
1:B:287:VAL:O	1:B:387:ARG:HA	2.22	0.40
1:B:146:TYR:HH	1:B:379:PHE:HD1	1.68	0.40
1:A:242[B]:LEU:O	1:A:454:ARG:HD2	2.21	0.40

There are no symmetry-related clashes.

5.3 Torsion angles [i](#)

5.3.1 Protein backbone [i](#)

In the following table, the Percentiles column shows the percent Ramachandran outliers of the chain as a percentile score with respect to all X-ray entries followed by that with respect to entries of similar resolution.

The Analysed column shows the number of residues for which the backbone conformation was analysed, and the total number of residues.

Mol	Chain	Analysed	Favoured	Allowed	Outliers	Percentiles	
1	A	521/490 (106%)	501 (96%)	20 (4%)	0	100	100
1	B	502/490 (102%)	487 (97%)	15 (3%)	0	100	100
All	All	1023/980 (104%)	988 (97%)	35 (3%)	0	100	100

There are no Ramachandran outliers to report.

5.3.2 Protein sidechains [i](#)

In the following table, the Percentiles column shows the percent sidechain outliers of the chain as a percentile score with respect to all X-ray entries followed by that with respect to entries of similar resolution.

The Analysed column shows the number of residues for which the sidechain conformation was analysed, and the total number of residues.

Mol	Chain	Analysed	Rotameric	Outliers	Percentiles	
1	A	403/363 (111%)	398 (99%)	5 (1%)	71	64
1	B	384/363 (106%)	381 (99%)	3 (1%)	81	77
All	All	787/726 (108%)	779 (99%)	8 (1%)	81	70

All (8) residues with a non-rotameric sidechain are listed below:

Mol	Chain	Res	Type
1	A	83[A]	ARG
1	A	83[B]	ARG
1	A	183	LEU
1	A	396[A]	ARG
1	A	396[B]	ARG
1	B	2	MSE
1	B	88	GLU
1	B	279	CYS

Some sidechains can be flipped to improve hydrogen bonding and reduce clashes. There are no such sidechains identified.

5.3.3 RNA [i](#)

There are no RNA molecules in this entry.

5.4 Non-standard residues in protein, DNA, RNA chains [i](#)

There are no non-standard protein/DNA/RNA residues in this entry.

5.5 Carbohydrates [i](#)

There are no carbohydrates in this entry.

5.6 Ligand geometry [i](#)

Of 22 ligands modelled in this entry, 3 are monoatomic - leaving 19 for Mogul analysis.

In the following table, the Counts columns list the number of bonds (or angles) for which Mogul statistics could be retrieved, the number of bonds (or angles) that are observed in the model and the number of bonds (or angles) that are defined in the Chemical Component Dictionary. The Link column lists molecule types, if any, to which the group is linked. The Z score for a bond length (or angle) is the number of standard deviations the observed value is removed from the expected value. A bond length (or angle) with $|Z| > 2$ is considered an outlier worth inspection. RMSZ is the root-mean-square of all Z scores of the bond lengths (or angles).

Mol	Type	Chain	Res	Link	Bond lengths			Bond angles		
					Counts	RMSZ	$\# Z > 2$	Counts	RMSZ	$\# Z > 2$
3	SO4	B	502	-	4,4,4	0.12	0	6,6,6	0.46	0
5	GOL	A	511	-	5,5,5	0.39	0	5,5,5	0.60	0

Mol	Type	Chain	Res	Link	Bond lengths			Bond angles		
					Counts	RMSZ	# Z > 2	Counts	RMSZ	# Z > 2
2	NAD	A	501	-	42,48,48	1.98	12 (28%)	50,73,73	3.12	24 (48%)
5	GOL	A	488	-	5,5,5	0.65	0	5,5,5	1.45	1 (20%)
3	SO4	A	503	-	4,4,4	0.17	0	6,6,6	0.22	0
5	GOL	A	512	-	5,5,5	0.39	0	5,5,5	0.32	0
3	SO4	A	507	-	4,4,4	0.15	0	6,6,6	0.13	0
2	NAD	B	501	-	42,48,48	1.98	12 (28%)	50,73,73	3.19	22 (44%)
5	GOL	A	508	-	5,5,5	0.32	0	5,5,5	0.85	0
3	SO4	A	502	-	4,4,4	0.24	0	6,6,6	0.35	0
3	SO4	B	504	-	4,4,4	0.16	0	6,6,6	0.21	0
3	SO4	B	503	-	4,4,4	0.18	0	6,6,6	0.33	0
3	SO4	A	506	-	4,4,4	0.20	0	6,6,6	0.20	0
5	GOL	A	510	-	5,5,5	0.31	0	5,5,5	0.37	0
4	SIN	A	504	-	1,7,7	0.13	0	2,8,8	5.17	1 (50%)
5	GOL	A	509	-	5,5,5	0.49	0	5,5,5	0.17	0
5	GOL	A	489	-	5,5,5	0.43	0	5,5,5	0.45	0
3	SO4	A	505	-	4,4,4	0.19	0	6,6,6	0.13	0
5	GOL	B	509	-	5,5,5	0.45	0	5,5,5	0.50	0

In the following table, the Chirals column lists the number of chiral outliers, the number of chiral centers analysed, the number of these observed in the model and the number defined in the Chemical Component Dictionary. Similar counts are reported in the Torsion and Rings columns. '-' means no outliers of that kind were identified.

Mol	Type	Chain	Res	Link	Chirals	Torsions	Rings
5	GOL	A	511	-	-	2/4/4/4	-
5	GOL	A	488	-	-	4/4/4/4	-
5	GOL	A	512	-	-	2/4/4/4	-
2	NAD	B	501	-	2/2/11/11	4/26/62/62	0/5/5/5
5	GOL	A	508	-	-	3/4/4/4	-
5	GOL	B	509	-	-	2/4/4/4	-
5	GOL	A	510	-	-	0/4/4/4	-
4	SIN	A	504	-	-	0/1/5/5	-
5	GOL	A	509	-	-	2/4/4/4	-
5	GOL	A	489	-	-	4/4/4/4	-
2	NAD	A	501	-	2/2/11/11	5/26/62/62	0/5/5/5

All (24) bond length outliers are listed below:

Mol	Chain	Res	Type	Atoms	Z	Observed(Å)	Ideal(Å)
2	B	501	NAD	C7N-N7N	5.58	1.43	1.33
2	A	501	NAD	C7N-N7N	5.49	1.43	1.33
2	B	501	NAD	O4B-C1B	4.90	1.47	1.41
2	A	501	NAD	O4B-C1B	4.56	1.47	1.41
2	A	501	NAD	O4D-C1D	4.25	1.47	1.41
2	B	501	NAD	O4D-C1D	3.90	1.46	1.41
2	A	501	NAD	C6A-N6A	3.59	1.47	1.34
2	B	501	NAD	C6N-N1N	3.53	1.44	1.35
2	B	501	NAD	C6A-N6A	3.49	1.46	1.34
2	A	501	NAD	C6N-N1N	3.32	1.43	1.35
2	A	501	NAD	C2A-N3A	3.27	1.37	1.32
2	A	501	NAD	C2A-N1A	2.65	1.38	1.33
2	A	501	NAD	C2N-C3N	2.64	1.43	1.39
2	B	501	NAD	C2N-C3N	2.63	1.43	1.39
2	B	501	NAD	C2A-N3A	2.58	1.36	1.32
2	B	501	NAD	O2B-C2B	-2.53	1.37	1.43
2	B	501	NAD	C2A-N1A	2.46	1.38	1.33
2	B	501	NAD	O2D-C2D	-2.39	1.37	1.43
2	A	501	NAD	O2D-C2D	-2.38	1.37	1.43
2	A	501	NAD	O2B-C2B	-2.35	1.37	1.43
2	B	501	NAD	PN-O1N	2.26	1.58	1.50
2	B	501	NAD	C8A-N7A	2.25	1.38	1.34
2	A	501	NAD	PN-O1N	2.13	1.58	1.50
2	A	501	NAD	C8A-N7A	2.11	1.38	1.34

All (48) bond angle outliers are listed below:

Mol	Chain	Res	Type	Atoms	Z	Observed(°)	Ideal(°)
2	B	501	NAD	O3B-C3B-C4B	7.86	133.77	111.05
2	A	501	NAD	O3B-C3B-C4B	7.69	133.28	111.05
4	A	504	SIN	C3-C2-C1	-7.31	100.41	112.67
2	B	501	NAD	C3N-C7N-N7N	6.95	126.09	117.75
2	A	501	NAD	O3D-C3D-C4D	6.42	129.60	111.05
2	B	501	NAD	O3D-C3D-C4D	6.37	129.46	111.05
2	B	501	NAD	N3A-C2A-N1A	-6.24	118.92	128.68
2	A	501	NAD	N3A-C2A-N1A	-6.15	119.06	128.68
2	B	501	NAD	O7N-C7N-C3N	-5.60	112.93	119.63
2	B	501	NAD	O2D-C2D-C3D	5.59	129.92	111.82
2	A	501	NAD	O7N-C7N-C3N	-5.35	113.22	119.63
2	A	501	NAD	O2D-C2D-C3D	5.20	128.64	111.82
2	A	501	NAD	C3N-C7N-N7N	5.19	123.98	117.75
2	B	501	NAD	PN-O3-PA	-5.15	115.16	132.83
2	A	501	NAD	C5B-C4B-C3B	5.00	133.93	115.18

Continued on next page...

Continued from previous page...

Mol	Chain	Res	Type	Atoms	Z	Observed(°)	Ideal(°)
2	A	501	NAD	PN-O3-PA	-4.97	115.78	132.83
2	B	501	NAD	C5B-C4B-C3B	4.94	133.68	115.18
2	B	501	NAD	O2B-C2B-C1B	4.68	128.12	110.85
2	B	501	NAD	O3D-C3D-C2D	4.61	126.72	111.82
2	A	501	NAD	O3D-C3D-C2D	4.55	126.54	111.82
2	A	501	NAD	O2B-C2B-C1B	4.47	127.37	110.85
2	A	501	NAD	C3N-C2N-N1N	-4.45	116.08	120.43
2	A	501	NAD	O2B-C2B-C3B	4.35	125.91	111.82
2	B	501	NAD	C3N-C2N-N1N	-4.34	116.19	120.43
2	B	501	NAD	O2B-C2B-C3B	4.18	125.34	111.82
2	A	501	NAD	O4D-C4D-C5D	3.89	122.16	109.37
2	B	501	NAD	O2D-C2D-C1D	3.83	125.01	110.85
2	A	501	NAD	O2D-C2D-C1D	3.80	124.89	110.85
2	A	501	NAD	O4B-C4B-C5B	3.62	121.29	109.37
2	A	501	NAD	O3B-C3B-C2B	3.56	123.34	111.82
2	B	501	NAD	C5D-C4D-C3D	3.55	128.49	115.18
2	B	501	NAD	O4D-C4D-C5D	3.50	120.90	109.37
2	B	501	NAD	O4B-C4B-C5B	3.42	120.63	109.37
2	B	501	NAD	C4N-C3N-C7N	-3.18	112.53	121.04
2	B	501	NAD	O3B-C3B-C2B	3.16	122.03	111.82
2	A	501	NAD	C5D-C4D-C3D	3.03	126.55	115.18
2	A	501	NAD	C4N-C3N-C7N	-2.84	113.44	121.04
2	B	501	NAD	C2N-N1N-C1D	2.76	125.28	119.14
2	A	501	NAD	C3D-C2D-C1D	2.74	105.10	100.98
5	A	488	GOL	O2-C2-C3	-2.68	97.34	109.12
2	B	501	NAD	C2N-C3N-C7N	2.57	126.92	119.46
2	B	501	NAD	O4B-C4B-C3B	-2.48	100.21	105.11
2	A	501	NAD	C2N-C3N-C4N	2.45	121.04	118.26
2	A	501	NAD	O4B-C4B-C3B	-2.43	100.30	105.11
2	A	501	NAD	C2N-N1N-C1D	2.33	124.33	119.14
2	A	501	NAD	PA-O5B-C5B	2.14	134.25	121.68
2	A	501	NAD	C2N-C3N-C7N	2.09	125.52	119.46
2	B	501	NAD	C3D-C2D-C1D	2.05	104.06	100.98

All (4) chirality outliers are listed below:

Mol	Chain	Res	Type	Atom
2	B	501	NAD	C2D
2	B	501	NAD	C3D
2	A	501	NAD	C2D
2	A	501	NAD	C3D

All (28) torsion outliers are listed below:

Mol	Chain	Res	Type	Atoms
5	A	509	GOL	O1-C1-C2-O2
5	A	509	GOL	O1-C1-C2-C3
5	A	511	GOL	C1-C2-C3-O3
5	A	508	GOL	O1-C1-C2-C3
5	A	489	GOL	O1-C1-C2-O2
5	A	489	GOL	O1-C1-C2-C3
5	A	512	GOL	O1-C1-C2-C3
2	B	501	NAD	C5B-O5B-PA-O1A
2	B	501	NAD	O4D-C4D-C5D-O5D
2	A	501	NAD	PN-O3-PA-O5B
2	A	501	NAD	O4D-C4D-C5D-O5D
2	A	501	NAD	O4D-C1D-N1N-C2N
2	A	501	NAD	O4D-C1D-N1N-C6N
5	A	488	GOL	O1-C1-C2-C3
5	A	488	GOL	C1-C2-C3-O3
5	A	489	GOL	C1-C2-C3-O3
5	B	509	GOL	C1-C2-C3-O3
5	A	511	GOL	O2-C2-C3-O3
5	A	488	GOL	O2-C2-C3-O3
5	A	508	GOL	O1-C1-C2-O2
5	A	512	GOL	O1-C1-C2-O2
5	A	488	GOL	O1-C1-C2-O2
5	A	489	GOL	O2-C2-C3-O3
5	B	509	GOL	O2-C2-C3-O3
2	B	501	NAD	C4D-C5D-O5D-PN
2	A	501	NAD	C4N-C3N-C7N-N7N
2	B	501	NAD	C3B-C4B-C5B-O5B
5	A	508	GOL	O2-C2-C3-O3

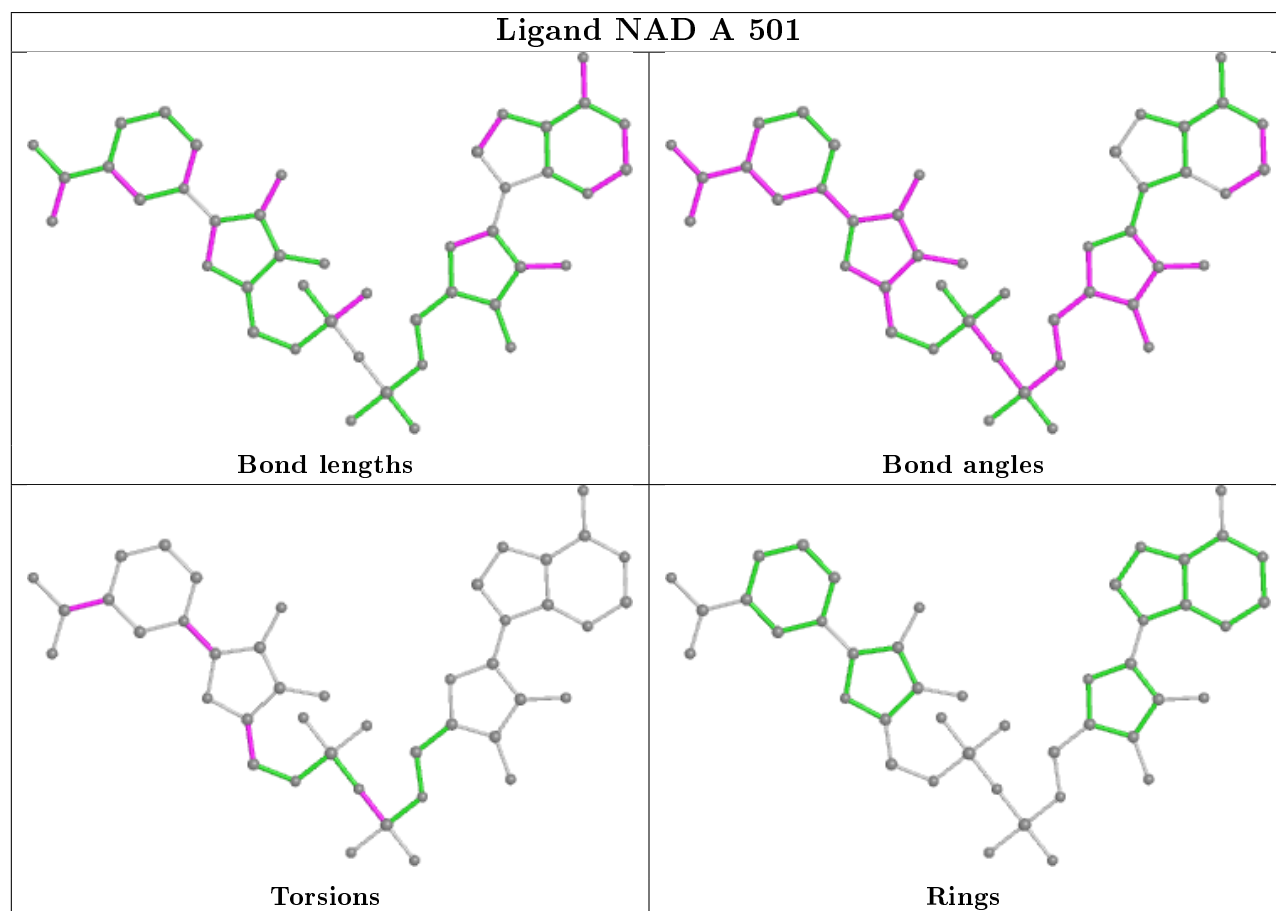
There are no ring outliers.

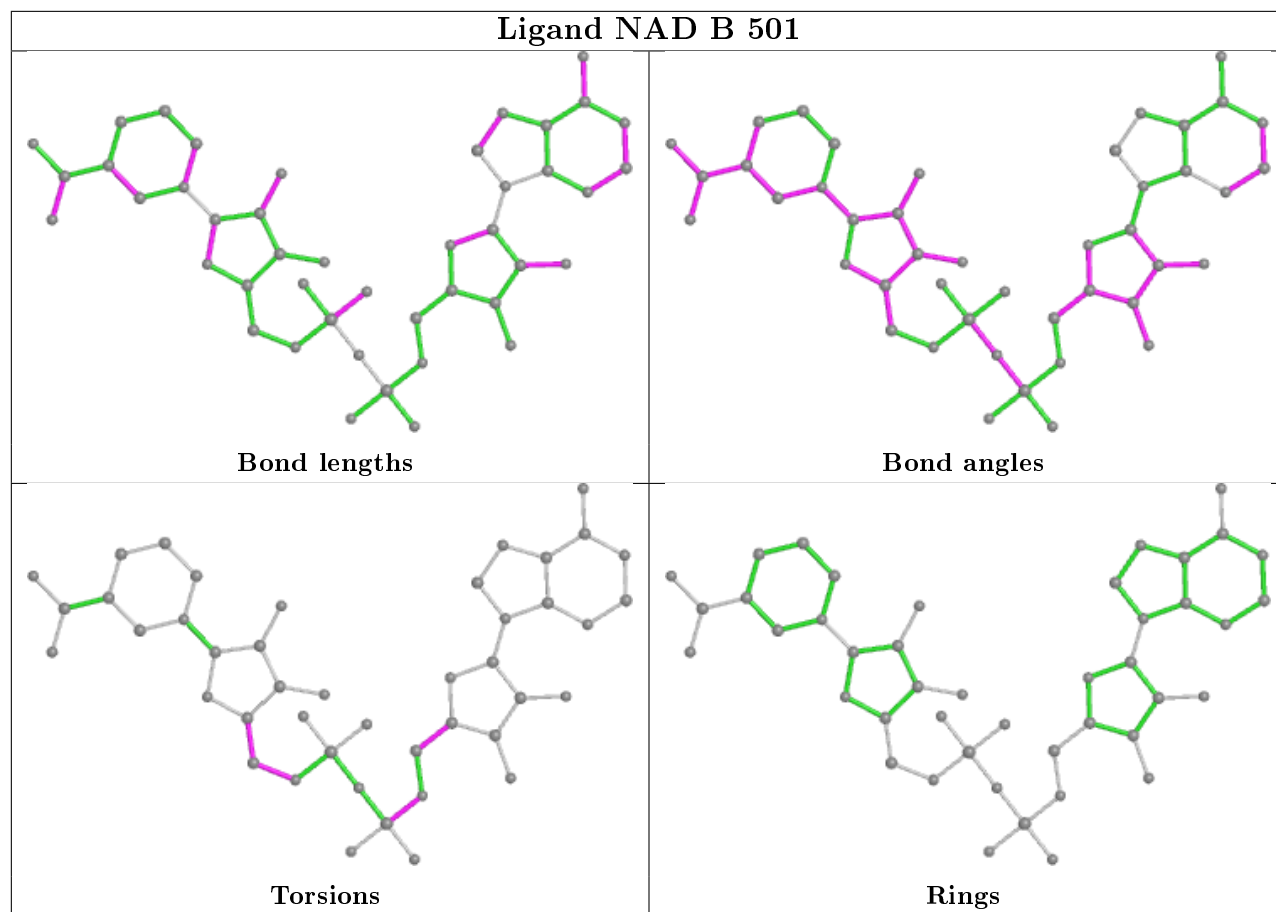
6 monomers are involved in 31 short contacts:

Mol	Chain	Res	Type	Clashes	Symm-Clashes
5	A	511	GOL	2	0
2	A	501	NAD	11	0
5	A	488	GOL	7	0
2	B	501	NAD	6	0
4	A	504	SIN	5	0
5	A	509	GOL	2	0

The following is a two-dimensional graphical depiction of Mogul quality analysis of bond lengths,

bond angles, torsion angles, and ring geometry for all instances of the Ligand of Interest. In addition, ligands with molecular weight > 250 and outliers as shown on the validation Tables will also be included. For torsion angles, if less than 5% of the Mogul distribution of torsion angles is within 10 degrees of the torsion angle in question, then that torsion angle is considered an outlier. Any bond that is central to one or more torsion angles identified as an outlier by Mogul will be highlighted in the graph. For rings, the root-mean-square deviation (RMSD) between the ring in question and similar rings identified by Mogul is calculated over all ring torsion angles. If the average RMSD is greater than 60 degrees and the minimal RMSD between the ring in question and any Mogul-identified rings is also greater than 60 degrees, then that ring is considered an outlier. The outliers are highlighted in purple. The color gray indicates Mogul did not find sufficient equivalents in the CSD to analyse the geometry.





5.7 Other polymers [i](#)

There are no such residues in this entry.

5.8 Polymer linkage issues [i](#)

There are no chain breaks in this entry.

6 Fit of model and data [i](#)

6.1 Protein, DNA and RNA chains [i](#)

In the following table, the column labelled ‘#RSRZ> 2’ contains the number (and percentage) of RSRZ outliers, followed by percent RSRZ outliers for the chain as percentile scores relative to all X-ray entries and entries of similar resolution. The OWAB column contains the minimum, median, 95th percentile and maximum values of the occupancy-weighted average B-factor per residue. The column labelled ‘Q< 0.9’ lists the number of (and percentage) of residues with an average occupancy less than 0.9.

Mol	Chain	Analysed	<RSRZ>	#RSRZ>2	OWAB(Å ²)	Q<0.9
1	A	480/490 (97%)	-0.39	8 (1%) 70 66	17, 25, 47, 88	0
1	B	480/490 (97%)	-0.21	11 (2%) 60 56	19, 33, 56, 91	0
All	All	960/980 (97%)	-0.30	19 (1%) 65 61	17, 28, 53, 91	0

All (19) RSRZ outliers are listed below:

Mol	Chain	Res	Type	RSRZ
1	B	355	ASP	3.5
1	B	372	GLU	3.2
1	A	374	PRO	3.2
1	B	371	ALA	3.2
1	B	315	GLN	3.1
1	A	372[A]	GLU	3.1
1	A	481	THR	3.0
1	A	480	ALA	3.0
1	A	127	ASP	3.0
1	B	273	ILE	2.9
1	B	374	PRO	2.8
1	B	435	LEU	2.6
1	A	371	ALA	2.6
1	B	370	VAL	2.6
1	A	315	GLN	2.2
1	B	213	ARG	2.2
1	B	369	ALA	2.2
1	B	316	PRO	2.1
1	A	355	ASP	2.1

6.2 Non-standard residues in protein, DNA, RNA chains [i](#)

There are no non-standard protein/DNA/RNA residues in this entry.

6.3 Carbohydrates [i](#)

There are no carbohydrates in this entry.

6.4 Ligands [i](#)

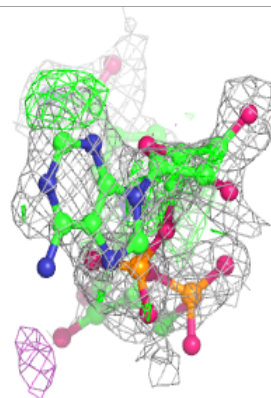
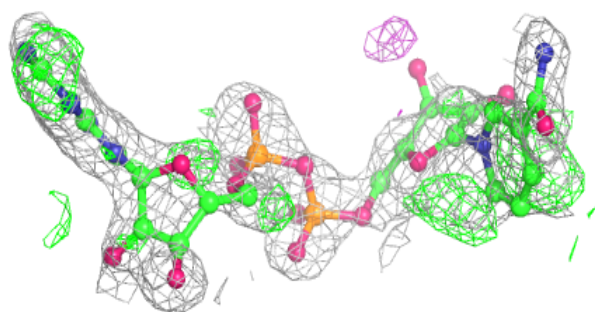
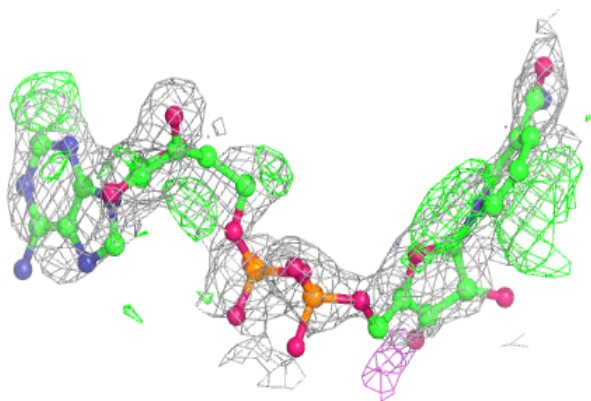
In the following table, the Atoms column lists the number of modelled atoms in the group and the number defined in the chemical component dictionary. The B-factors column lists the minimum, median, 95th percentile and maximum values of B factors of atoms in the group. The column labelled 'Q< 0.9' lists the number of atoms with occupancy less than 0.9.

Mol	Type	Chain	Res	Atoms	RSCC	RSR	B-factors(Å ²)	Q<0.9
5	GOL	A	510	6/6	0.37	0.30	71,78,79,80	0
5	GOL	A	512	6/6	0.49	0.27	54,61,66,66	0
2	NAD	B	501	44/44	0.74	0.27	25,51,65,68	42
5	GOL	A	511	6/6	0.78	0.33	44,53,54,65	0
2	NAD	A	501	44/44	0.78	0.30	21,46,53,81	43
5	GOL	B	509	6/6	0.80	0.22	47,53,65,70	0
6	CL	B	506	1/1	0.82	0.10	77,77,77,77	0
5	GOL	A	489	6/6	0.83	0.15	65,79,85,85	0
3	SO4	A	506	5/5	0.84	0.32	77,78,82,91	0
3	SO4	A	503	5/5	0.86	0.12	69,70,80,85	0
5	GOL	A	509	6/6	0.87	0.40	45,58,61,64	0
5	GOL	A	508	6/6	0.89	0.14	39,55,62,66	0
4	SIN	A	504	8/8	0.90	0.14	34,45,51,60	0
3	SO4	A	505	5/5	0.90	0.15	80,86,92,96	0
3	SO4	B	504	5/5	0.92	0.20	84,86,87,94	0
6	CL	B	505	1/1	0.92	0.32	67,67,67,67	0
5	GOL	A	488	6/6	0.93	0.17	29,38,44,45	0
3	SO4	A	507	5/5	0.94	0.16	96,99,100,102	0
3	SO4	B	503	5/5	0.95	0.08	61,68,71,79	0
3	SO4	A	502	5/5	0.96	0.09	53,66,72,77	0
7	MG	B	510	1/1	0.98	0.02	37,37,37,37	0
3	SO4	B	502	5/5	0.98	0.11	41,46,49,64	0

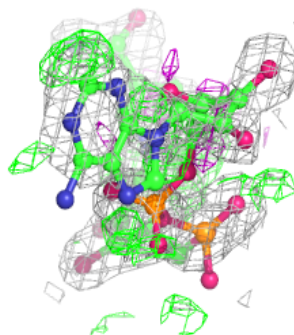
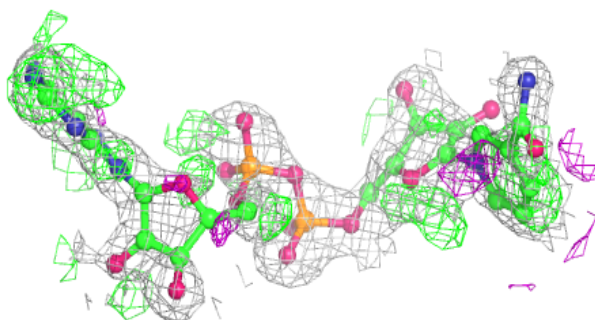
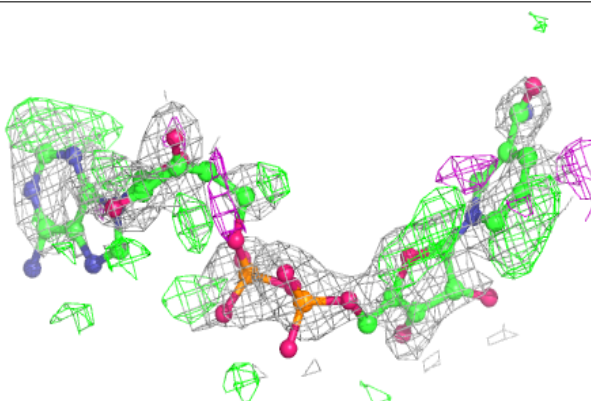
The following is a graphical depiction of the model fit to experimental electron density of all instances of the Ligand of Interest. In addition, ligands with molecular weight > 250 and outliers as shown on the geometry validation Tables will also be included. Each fit is shown from different orientation to approximate a three-dimensional view.

Electron density around NAD B 501:

$2mF_o-DF_c$ (at 0.7 rmsd) in gray
 mF_o-DF_c (at 3 rmsd) in purple (negative)
and green (positive)

**Electron density around NAD A 501:**

$2mF_o-DF_c$ (at 0.7 rmsd) in gray
 mF_o-DF_c (at 3 rmsd) in purple (negative)
and green (positive)



6.5 Other polymers

There are no such residues in this entry.