



Full wwPDB EM Validation Report ⓘ

Feb 12, 2024 – 11:41 AM EST

PDB ID : 3J95
EMDB ID : EMD-6205
Title : Structure of ADP-bound N-ethylmaleimide sensitive factor determined by single particle cryoelectron microscopy
Authors : Zhao, M.; Wu, S.; Cheng, Y.; Brunger, A.T.
Deposited on : 2014-12-05
Resolution : 7.60 Å(reported)
Based on initial model : 1NSF

This is a Full wwPDB EM Validation Report for a publicly released PDB entry.

We welcome your comments at validation@mail.wwpdb.org

A user guide is available at

<https://www.wwpdb.org/validation/2017/EMValidationReportHelp>

with specific help available everywhere you see the ⓘ symbol.

The types of validation reports are described at

<http://www.wwpdb.org/validation/2017/FAQs#types>.

The following versions of software and data (see [references ⓘ](#)) were used in the production of this report:

EMDB validation analysis : 0.0.1.dev70
Mogul : 1.8.5 (274361), CSD as541be (2020)
MolProbity : 4.02b-467
buster-report : 1.1.7 (2018)
Percentile statistics : 20191225.v01 (using entries in the PDB archive December 25th 2019)
MapQ : 1.9.9
Ideal geometry (proteins) : Engh & Huber (2001)
Ideal geometry (DNA, RNA) : Parkinson et al. (1996)
Validation Pipeline (wwPDB-VP) : 2.36

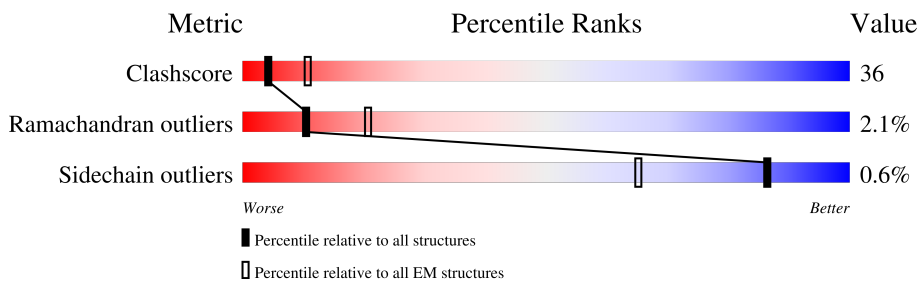
1 Overall quality at a glance

The following experimental techniques were used to determine the structure:

ELECTRON MICROSCOPY

The reported resolution of this entry is 7.60 Å.

Percentile scores (ranging between 0-100) for global validation metrics of the entry are shown in the following graphic. The table shows the number of entries on which the scores are based.



Metric	Whole archive (#Entries)	EM structures (#Entries)
Clashscore	158937	4297
Ramachandran outliers	154571	4023
Sidechain outliers	154315	3826

The table below summarises the geometric issues observed across the polymeric chains and their fit to the map. The red, orange, yellow and green segments of the bar indicate the fraction of residues that contain outliers for ≥ 3 , 2, 1 and 0 types of geometric quality criteria respectively. A grey segment represents the fraction of residues that are not modelled. The numeric value for each fraction is indicated below the corresponding segment, with a dot representing fractions $\leq 5\%$. The upper red bar (where present) indicates the fraction of residues that have poor fit to the EM map (all-atom inclusion $< 40\%$). The numeric value is given above the bar.

Mol	Chain	Length	Quality of chain
1	A	747	
1	B	747	
1	C	747	
1	D	747	
1	E	747	
1	F	747	

The following table lists non-polymeric compounds, carbohydrate monomers and non-standard residues in protein, DNA, RNA chains that are outliers for geometric or electron-density-fit criteria:

Mol	Type	Chain	Res	Chirality	Geometry	Clashes	Electron density
2	ADP	B	801	-	-	X	-
2	ADP	D	801	-	-	X	-
2	ADP	E	801	-	-	X	-

2 Entry composition [i](#)

There are 2 unique types of molecules in this entry. The entry contains 21123 atoms, of which 0 are hydrogens and 0 are deuteriums.

In the tables below, the AltConf column contains the number of residues with at least one atom in alternate conformation and the Trace column contains the number of residues modelled with at most 2 atoms.

- Molecule 1 is a protein called Vesicle-fusing ATPase.

Mol	Chain	Residues	Atoms					AltConf	Trace
			Total	C	N	O	S		
1	A	483	3513	2221	617	660	15	0	0
1	B	481	3517	2230	611	660	16	0	0
1	C	485	3535	2236	618	666	15	0	0
1	D	479	3467	2203	594	654	16	0	0
1	E	482	3516	2233	611	656	16	0	0
1	F	473	3467	2197	609	645	16	0	0

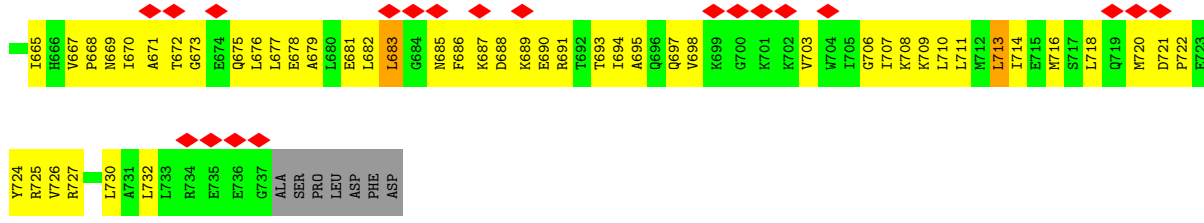
There are 18 discrepancies between the modelled and reference sequences:

Chain	Residue	Modelled	Actual	Comment	Reference
A	-2	GLY	-	expression tag	UNP P18708
A	-1	ALA	-	expression tag	UNP P18708
A	0	HIS	-	expression tag	UNP P18708
B	-2	GLY	-	expression tag	UNP P18708
B	-1	ALA	-	expression tag	UNP P18708
B	0	HIS	-	expression tag	UNP P18708
C	-2	GLY	-	expression tag	UNP P18708
C	-1	ALA	-	expression tag	UNP P18708
C	0	HIS	-	expression tag	UNP P18708
D	-2	GLY	-	expression tag	UNP P18708
D	-1	ALA	-	expression tag	UNP P18708
D	0	HIS	-	expression tag	UNP P18708
E	-2	GLY	-	expression tag	UNP P18708
E	-1	ALA	-	expression tag	UNP P18708
E	0	HIS	-	expression tag	UNP P18708
F	-2	GLY	-	expression tag	UNP P18708
F	-1	ALA	-	expression tag	UNP P18708
F	0	HIS	-	expression tag	UNP P18708

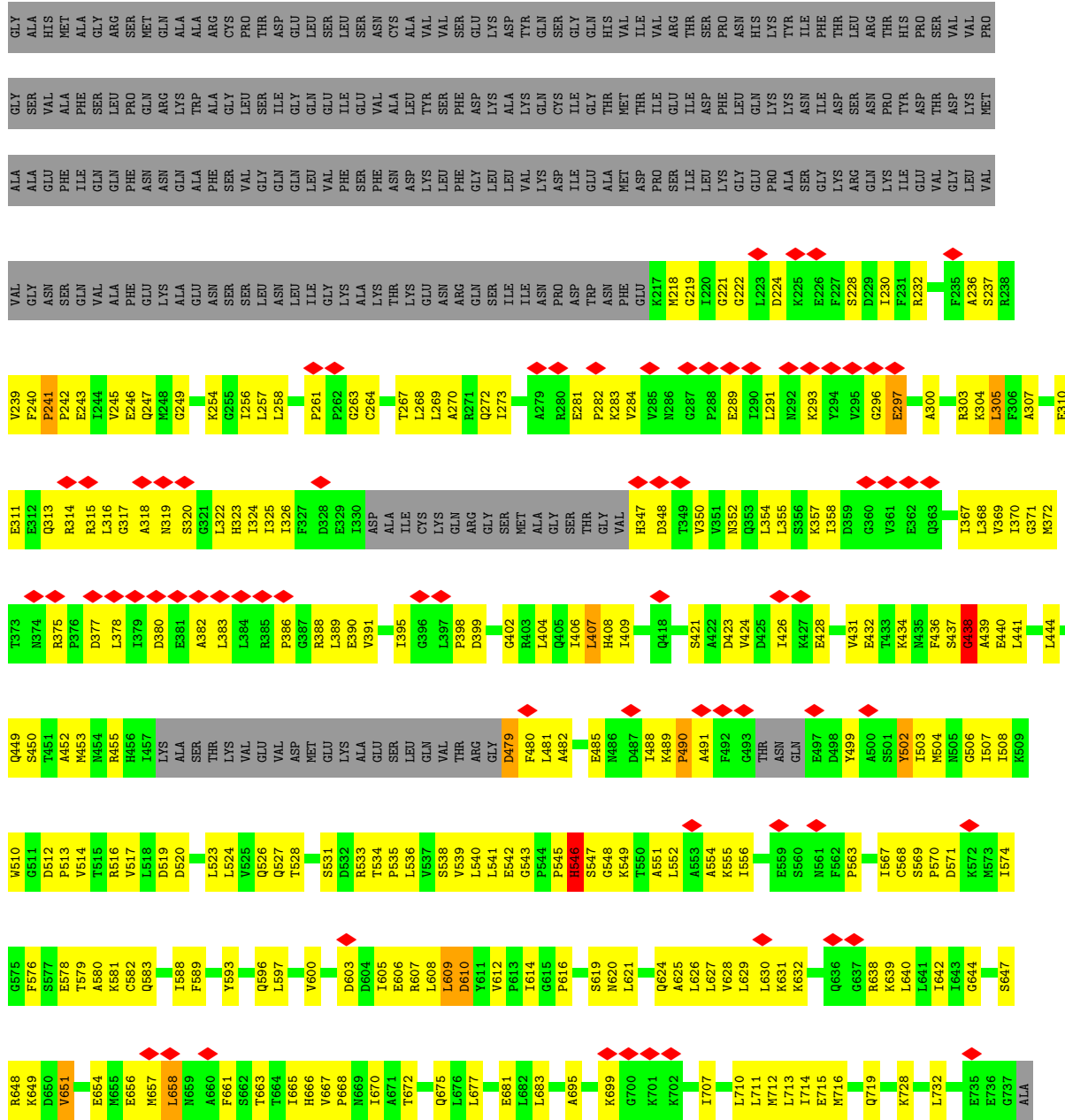
- Molecule 2 is ADENOSINE-5'-DIPHOSPHATE (three-letter code: ADP) (formula: $C_{10}H_{15}N_5O_{10}P_2$).

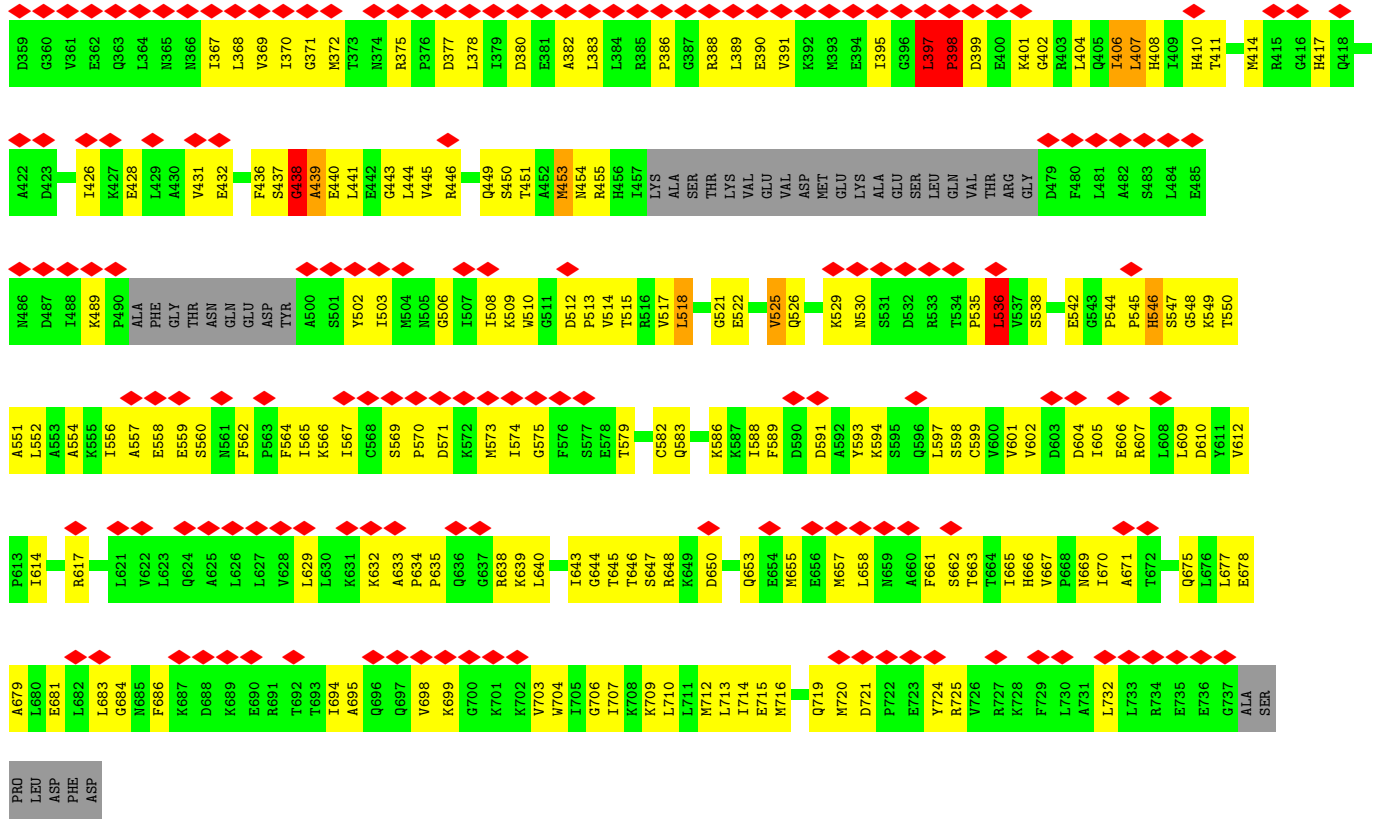


Mol	Chain	Residues	Atoms					AltConf
			Total	C	N	O	P	
2	B	1	Total	C	N	O	P	0
			27	10	5	10	2	
2	C	1	Total	C	N	O	P	0
			27	10	5	10	2	
2	D	1	Total	C	N	O	P	0
			27	10	5	10	2	
2	E	1	Total	C	N	O	P	0
			27	10	5	10	2	



• Molecule 1: Vesicle-fusing ATPase





4 Experimental information

Property	Value	Source
EM reconstruction method	SINGLE PARTICLE	Depositor
Imposed symmetry	POINT, C1	Depositor
Number of particles used	12830	Depositor
Resolution determination method	FSC 0.143 CUT-OFF	Depositor
CTF correction method	Each particle	Depositor
Microscope	FEI POLARA 300	Depositor
Voltage (kV)	300	Depositor
Electron dose ($e^-/\text{\AA}^2$)	44	Depositor
Minimum defocus (nm)	-1800	Depositor
Maximum defocus (nm)	-2800	Depositor
Magnification	31000	Depositor
Image detector	GATAN K2 (4k x 4k)	Depositor
Maximum map value	13.843	Depositor
Minimum map value	-5.160	Depositor
Average map value	0.000	Depositor
Map value standard deviation	1.000	Depositor
Recommended contour level	6.0	Depositor
Map size (\AA)	311.1936, 311.1936, 311.1936	wwPDB
Map dimensions	128, 128, 128	wwPDB
Map angles ($^\circ$)	90.0, 90.0, 90.0	wwPDB
Pixel spacing (\AA)	2.4312, 2.4312, 2.4312	Depositor

5 Model quality

5.1 Standard geometry

Bond lengths and bond angles in the following residue types are not validated in this section: ADP

The Z score for a bond length (or angle) is the number of standard deviations the observed value is removed from the expected value. A bond length (or angle) with $|Z| > 5$ is considered an outlier worth inspection. RMSZ is the root-mean-square of all Z scores of the bond lengths (or angles).

Mol	Chain	Bond lengths		Bond angles	
		RMSZ	# Z >5	RMSZ	# Z >5
1	A	0.52	3/3559 (0.1%)	0.95	11/4824 (0.2%)
1	B	0.47	0/3566	0.89	6/4834 (0.1%)
1	C	0.46	0/3584	0.87	5/4858 (0.1%)
1	D	0.43	0/3516	0.84	8/4775 (0.2%)
1	E	0.48	0/3566	0.93	8/4833 (0.2%)
1	F	0.49	0/3514	0.92	13/4759 (0.3%)
All	All	0.48	3/21305 (0.0%)	0.90	51/28883 (0.2%)

Chiral center outliers are detected by calculating the chiral volume of a chiral center and verifying if the center is modelled as a planar moiety or with the opposite hand. A planarity outlier is detected by checking planarity of atoms in a peptide group, atoms in a mainchain group or atoms of a sidechain that are expected to be planar.

Mol	Chain	#Chirality outliers	#Planarity outliers
1	A	0	1
1	B	0	2
1	E	0	1
1	F	0	2
All	All	0	6

All (3) bond length outliers are listed below:

Mol	Chain	Res	Type	Atoms	Z	Observed(Å)	Ideal(Å)
1	A	235	PHE	CD1-CE1	-7.83	1.23	1.39
1	A	236	ALA	CA-CB	-5.78	1.40	1.52
1	A	235	PHE	CB-CG	-5.41	1.42	1.51

All (51) bond angle outliers are listed below:

Mol	Chain	Res	Type	Atoms	Z	Observed(°)	Ideal(°)
1	A	235	PHE	CB-CG-CD1	-10.55	113.42	120.80
1	C	677	LEU	CB-CG-CD2	-9.07	95.58	111.00
1	A	235	PHE	CB-CG-CD2	8.18	126.52	120.80
1	E	629	LEU	CB-CG-CD1	-8.14	97.16	111.00
1	C	322	LEU	CA-CB-CG	8.13	134.00	115.30
1	E	683	LEU	CB-CG-CD2	-7.94	97.50	111.00
1	E	305	LEU	CA-CB-CG	7.55	132.67	115.30
1	B	305	LEU	CA-CB-CG	7.52	132.60	115.30
1	F	305	LEU	CA-CB-CG	7.51	132.56	115.30
1	B	479	ASP	N-CA-C	-7.44	90.91	111.00
1	F	406	ILE	CG1-CB-CG2	-7.41	95.09	111.40
1	F	536	LEU	CA-CB-CG	7.37	132.25	115.30
1	E	552	LEU	CB-CG-CD2	-7.24	98.69	111.00
1	F	518	LEU	CB-CG-CD1	-7.05	99.02	111.00
1	A	322	LEU	CA-CB-CG	6.92	131.22	115.30
1	B	658	LEU	CB-CG-CD1	-6.69	99.63	111.00
1	A	641	LEU	CA-CB-CG	6.66	130.62	115.30
1	C	444	LEU	CA-CB-CG	6.59	130.45	115.30
1	F	683	LEU	CB-CG-CD2	-6.56	99.85	111.00
1	E	652	LEU	CB-CG-CD2	-6.29	100.30	111.00
1	D	395	ILE	CG1-CB-CG2	-6.28	97.58	111.40
1	F	397	LEU	C-N-CD	6.24	141.49	128.40
1	E	682	LEU	CA-CB-CG	-6.14	101.17	115.30
1	D	682	LEU	CA-CB-CG	-6.14	101.18	115.30
1	A	525	VAL	CG1-CB-CG2	6.09	120.65	110.90
1	F	525	VAL	CG1-CB-CG2	5.96	120.43	110.90
1	D	627	LEU	CB-CG-CD2	-5.93	100.92	111.00
1	A	597	LEU	CB-CG-CD2	-5.88	101.01	111.00
1	F	518	LEU	CB-CG-CD2	5.86	120.96	111.00
1	A	552	LEU	CA-CB-CG	5.78	128.58	115.30
1	D	397	LEU	CA-CB-CG	5.67	128.34	115.30
1	A	216	GLU	N-CA-C	-5.64	95.76	111.00
1	E	522	GLU	CA-CB-CG	5.61	125.74	113.40
1	C	457	ILE	CG1-CB-CG2	-5.58	99.12	111.40
1	D	643	ILE	CB-CA-C	-5.54	100.52	111.60
1	A	683	LEU	CA-CB-CG	5.47	127.88	115.30
1	F	546	HIS	N-CA-CB	-5.38	100.91	110.60
1	D	404	LEU	CA-CB-CG	5.37	127.65	115.30
1	B	407	LEU	CA-CB-CG	5.36	127.64	115.30
1	C	640	LEU	CA-CB-CG	5.34	127.59	115.30
1	F	455	ARG	N-CA-C	5.30	125.31	111.00
1	A	407	LEU	CA-CB-CG	5.30	127.48	115.30
1	F	640	LEU	CA-CB-CG	5.26	127.39	115.30

Continued on next page...

Continued from previous page...

Mol	Chain	Res	Type	Atoms	Z	Observed(°)	Ideal(°)
1	D	643	ILE	CG1-CB-CG2	-5.18	100.01	111.40
1	D	416	GLY	N-CA-C	-5.14	100.25	113.10
1	F	398	PRO	CA-N-CD	-5.07	104.40	111.50
1	B	609	LEU	CA-CB-CG	-5.05	103.68	115.30
1	B	610	ASP	N-CA-CB	-5.05	101.51	110.60
1	A	713	LEU	CB-CG-CD2	-5.04	102.44	111.00
1	F	407	LEU	CA-CB-CG	5.03	126.87	115.30
1	E	407	LEU	CA-CB-CG	5.03	126.86	115.30

There are no chirality outliers.

All (6) planarity outliers are listed below:

Mol	Chain	Res	Type	Group
1	A	241	PRO	Peptide
1	B	438	GLY	Peptide
1	B	546	HIS	Mainchain
1	E	438	GLY	Peptide
1	F	438	GLY	Peptide
1	F	453	MET	Mainchain

5.2 Too-close contacts [i](#)

In the following table, the Non-H and H(model) columns list the number of non-hydrogen atoms and hydrogen atoms in the chain respectively. The H(added) column lists the number of hydrogen atoms added and optimized by MolProbity. The Clashes column lists the number of clashes within the asymmetric unit, whereas Symm-Clashes lists symmetry-related clashes.

Mol	Chain	Non-H	H(model)	H(added)	Clashes	Symm-Clashes
1	A	3513	0	3416	260	0
1	B	3517	0	3436	261	0
1	C	3535	0	3431	278	0
1	D	3467	0	3351	250	0
1	E	3516	0	3424	286	0
1	F	3467	0	3409	263	0
2	B	27	0	10	11	0
2	C	27	0	12	8	0
2	D	27	0	9	11	0
2	E	27	0	10	9	0
All	All	21123	0	20508	1497	0

The all-atom clashscore is defined as the number of clashes found per 1000 atoms (including

hydrogen atoms). The all-atom clashscore for this structure is 36.

All (1497) close contacts within the same asymmetric unit are listed below, sorted by their clash magnitude.

Atom-1	Atom-2	Interatomic distance (Å)	Clash overlap (Å)
1:F:222:GLY:H	1:F:402:GLY:HA3	1.24	1.02
1:A:222:GLY:HA3	1:A:402:GLY:HA2	1.51	0.93
1:E:263:GLY:O	1:E:437:SER:HB2	1.71	0.89
1:D:448:ALA:HA	1:D:482:ALA:HB3	1.53	0.89
1:C:490:PRO:HA	1:C:491:ALA:HB3	1.53	0.88
1:F:538:SER:HB3	1:F:662:SER:H	1.40	0.86
1:F:545:PRO:HA	1:F:547:SER:H	1.39	0.85
1:C:670:ILE:HD13	1:C:675:GLN:HG2	1.58	0.84
1:E:686:PHE:HE1	1:E:714:ILE:HG23	1.43	0.84
1:F:256:ILE:HG13	1:F:370:ILE:HG22	1.58	0.84
1:A:549:LYS:NZ	1:A:647:SER:OG	2.10	0.83
1:D:507:ILE:HA	2:D:801:ADP:N7	1.93	0.83
1:E:490:PRO:HA	1:E:491:ALA:HB3	1.60	0.83
1:F:538:SER:HG	1:F:661:PHE:HD1	1.24	0.83
1:B:490:PRO:HA	1:B:491:ALA:HB3	1.60	0.83
1:F:538:SER:H	1:F:662:SER:HB3	1.44	0.83
1:C:256:ILE:HG13	1:C:370:ILE:HG22	1.59	0.83
1:C:687:LYS:N	1:C:690:GLU:OE2	2.12	0.82
1:B:508:ILE:H	2:B:801:ADP:HN61	1.23	0.82
1:A:285:VAL:HG13	1:A:326:ILE:HD11	1.61	0.82
1:E:526:GLN:NE2	1:F:719:GLN:O	2.12	0.81
1:E:527:GLN:O	1:E:531:SER:OG	1.97	0.81
1:B:589:PHE:HE1	1:B:600:VAL:HG11	1.45	0.81
1:A:510:TRP:HA	1:A:682:LEU:HD13	1.61	0.81
1:C:313:GLN:O	1:C:317:GLY:N	2.14	0.81
1:C:407:LEU:HD11	1:C:426:ILE:HG23	1.62	0.81
1:F:525:VAL:HG13	1:F:562:PHE:CE1	2.16	0.80
1:E:707:ILE:HD13	2:E:801:ADP:C8	2.17	0.80
1:F:536:LEU:HD11	1:F:634:PRO:HD3	1.62	0.80
1:B:386:PRO:HA	1:B:390:GLU:HA	1.64	0.80
1:D:527:GLN:HE22	1:E:715:GLU:C	1.83	0.80
1:D:406:ILE:HG22	1:D:441:LEU:HD22	1.61	0.80
1:F:386:PRO:HA	1:F:390:GLU:HA	1.62	0.80
1:A:713:LEU:HD21	1:A:732:LEU:HB3	1.64	0.79
1:E:587:LYS:NZ	1:E:587:LYS:O	2.15	0.79
1:A:542:GLU:HG2	1:A:649:LYS:HD2	1.61	0.79
1:E:534:THR:HG21	1:F:712:MET:HA	1.63	0.79
1:A:485:GLU:O	1:A:489:LYS:N	2.15	0.79

Continued on next page...

Continued from previous page...

Atom-1	Atom-2	Interatomic distance (Å)	Clash overlap (Å)
1:C:497:GLU:O	1:C:499:TYR:N	2.14	0.79
1:B:581:LYS:NZ	1:B:608:LEU:O	2.15	0.79
1:A:557:ALA:O	1:A:560:SER:OG	2.00	0.79
1:C:540:LEU:HB3	1:C:664:THR:HG22	1.63	0.79
1:E:407:LEU:HD11	1:E:426:ILE:HG23	1.65	0.79
1:F:570:PRO:HG2	1:F:604:ASP:HB2	1.65	0.78
1:F:564:PHE:O	1:F:598:SER:OG	2.00	0.78
1:F:517:VAL:HG13	1:F:665:ILE:HG21	1.66	0.78
1:E:680:LEU:HD13	1:E:694:ILE:HD13	1.66	0.78
1:F:222:GLY:N	1:F:402:GLY:HA3	1.97	0.78
1:A:397:LEU:HD13	1:A:435:ASN:HA	1.66	0.78
1:E:386:PRO:HA	1:E:390:GLU:HA	1.63	0.78
1:A:567:ILE:HG13	1:A:601:VAL:HB	1.66	0.77
1:E:706:GLY:O	1:E:710:LEU:N	2.16	0.77
1:D:626:LEU:HB3	1:D:657:MET:HE3	1.67	0.77
1:D:728:LYS:HE3	1:D:732:LEU:HD11	1.67	0.77
1:E:685:ASN:HB3	1:E:718:LEU:HD11	1.67	0.77
1:C:627:LEU:HD12	1:D:607:ARG:HH12	1.50	0.76
1:D:510:TRP:HE3	1:D:675:GLN:HG2	1.51	0.76
1:F:222:GLY:HA2	1:F:399:ASP:HB2	1.67	0.76
1:E:625:ALA:HA	1:F:574:ILE:HD11	1.67	0.76
1:B:627:LEU:HD21	1:B:657:MET:HG3	1.67	0.76
1:F:398:PRO:HG3	1:F:436:PHE:O	1.85	0.76
1:C:652:LEU:HD22	1:C:657:MET:HG2	1.67	0.76
1:B:300:ALA:O	1:B:304:LYS:HG2	1.86	0.76
1:D:502:TYR:O	2:D:801:ADP:O3'	2.03	0.76
1:C:578:GLU:HB3	1:C:621:LEU:HB3	1.68	0.76
1:C:718:LEU:O	1:C:725:ARG:NH1	2.19	0.75
1:A:351:VAL:O	1:A:355:LEU:HG	1.86	0.75
1:A:670:ILE:HG23	1:A:675:GLN:HB2	1.68	0.75
1:E:300:ALA:O	1:E:304:LYS:HG2	1.86	0.75
1:E:686:PHE:HB3	1:E:690:GLU:HB2	1.68	0.75
1:A:546:HIS:C	1:A:708:LYS:HB3	2.07	0.75
1:D:448:ALA:HA	1:D:482:ALA:CB	2.16	0.75
1:C:724:TYR:HD2	1:C:727:ARG:HH21	1.35	0.74
1:F:407:LEU:HD11	1:F:426:ILE:HG23	1.67	0.74
1:E:552:LEU:HD21	2:E:801:ADP:N6	1.99	0.74
1:F:589:PHE:HD2	1:F:629:LEU:HD13	1.52	0.74
1:C:691:ARG:HA	1:C:694:ILE:HD12	1.67	0.74
1:F:220:ILE:N	1:F:406:ILE:HD11	2.02	0.74
1:D:313:GLN:HE22	1:D:364:LEU:HA	1.51	0.74

Continued on next page...

Continued from previous page...

Atom-1	Atom-2	Interatomic distance (Å)	Clash overlap (Å)
1:A:238:ARG:HA	1:A:252:HIS:CE1	2.21	0.74
1:E:563:PRO:HG2	1:E:595:SER:OG	1.87	0.74
1:C:711:LEU:O	1:C:715:GLU:HG2	1.88	0.74
1:B:540:LEU:HD23	1:B:661:PHE:CD1	2.23	0.74
1:C:544:PRO:O	1:C:547:SER:OG	2.06	0.74
1:C:318:ALA:O	1:C:319:ASN:ND2	2.21	0.74
1:C:386:PRO:HA	1:C:390:GLU:HA	1.70	0.74
1:C:690:GLU:HB2	1:C:726:VAL:HG21	1.69	0.74
1:F:300:ALA:O	1:F:304:LYS:HG2	1.87	0.73
1:A:236:ALA:HB1	1:B:453:MET:HB2	1.70	0.73
1:C:596:GLN:HA	1:C:638:ARG:HD3	1.71	0.73
1:B:524:LEU:HD21	1:B:663:THR:HG21	1.70	0.73
1:C:630:LEU:HD11	1:C:661:PHE:CE1	2.24	0.73
1:A:624:GLN:HG3	1:B:610:ASP:OD2	1.87	0.73
1:A:553:ALA:HA	1:A:556:ILE:HD12	1.69	0.73
1:F:535:PRO:HA	1:F:639:LYS:HG2	1.71	0.73
1:B:540:LEU:HD11	1:B:649:LYS:NZ	2.04	0.72
1:B:533:ARG:HG3	1:B:534:THR:H	1.53	0.72
1:C:508:ILE:HG13	1:C:510:TRP:HD1	1.53	0.72
1:B:407:LEU:HD11	1:B:426:ILE:HG23	1.71	0.72
1:D:352:ASN:HB3	1:E:288:PRO:HB2	1.70	0.72
1:E:311:GLU:OE1	1:E:314:ARG:NE	2.23	0.72
1:D:301:ASN:HA	1:D:304:LYS:HD3	1.70	0.72
1:E:585:MET:HA	1:E:588:ILE:HD12	1.69	0.72
1:B:508:ILE:N	2:B:801:ADP:HN61	1.88	0.72
1:C:513:PRO:O	1:C:516:ARG:HG2	1.89	0.72
1:E:653:GLN:HA	1:E:658:LEU:HB2	1.71	0.72
1:E:510:TRP:CD1	1:E:707:ILE:HD12	2.25	0.72
1:A:710:LEU:O	1:A:714:ILE:HG13	1.89	0.71
1:C:508:ILE:HD11	1:C:707:ILE:HD11	1.71	0.71
1:F:565:ILE:HG23	1:F:599:CYS:HB3	1.72	0.71
1:C:611:TYR:CE1	1:C:616:PRO:HB2	2.26	0.71
1:D:605:ILE:HD11	1:D:644:GLY:HA3	1.72	0.71
1:E:513:PRO:HA	1:E:516:ARG:HG2	1.70	0.71
1:B:263:GLY:O	1:B:437:SER:HB3	1.91	0.71
1:D:528:THR:OG1	1:D:641:LEU:HD12	1.90	0.71
1:F:569:SER:OG	1:F:571:ASP:OD2	2.05	0.71
1:F:634:PRO:HB2	1:F:638:ARG:HG3	1.73	0.71
1:D:230:ILE:HD11	1:D:256:ILE:HD13	1.72	0.71
1:E:236:ALA:HA	1:E:239:VAL:HG12	1.72	0.71
1:F:606:GLU:N	1:F:606:GLU:OE1	2.24	0.71

Continued on next page...

Continued from previous page...

Atom-1	Atom-2	Interatomic distance (Å)	Clash overlap (Å)
1:B:424:VAL:N	1:B:479:ASP:N	2.39	0.70
1:B:656:GLU:OE1	1:C:648:ARG:NH2	2.24	0.70
1:D:386:PRO:HA	1:D:390:GLU:HA	1.73	0.70
1:D:711:LEU:HA	1:D:714:ILE:HD12	1.73	0.70
1:A:221:GLY:HA3	1:A:406:ILE:HG13	1.74	0.70
1:B:303:ARG:HG3	1:B:357:LYS:HE2	1.73	0.70
1:F:510:TRP:CE3	1:F:675:GLN:HB3	2.25	0.70
1:B:507:ILE:HA	2:B:801:ADP:N7	2.06	0.70
1:C:564:PHE:O	1:C:598:SER:OG	2.07	0.70
1:D:513:PRO:HA	1:D:516:ARG:HG2	1.70	0.70
1:E:603:ASP:OD2	1:E:645:THR:OG1	2.06	0.70
1:F:437:SER:OG	1:F:440:GLU:HG2	1.91	0.70
1:A:326:ILE:HG22	1:A:370:ILE:HG12	1.73	0.70
1:F:303:ARG:HG3	1:F:357:LYS:HE2	1.74	0.70
1:C:262:PRO:HD2	1:C:594:LYS:HE2	1.73	0.70
1:E:604:ASP:HB3	1:E:607:ARG:HB3	1.73	0.70
1:A:309:ALA:HB1	1:A:367:ILE:HG21	1.74	0.70
1:E:514:VAL:HG13	2:E:801:ADP:HN61	1.55	0.70
1:F:721:ASP:HB2	1:F:724:TYR:HD1	1.57	0.70
1:C:669:ASN:OD1	1:C:706:GLY:HA2	1.90	0.70
1:D:348:ASP:O	1:D:352:ASN:ND2	2.25	0.70
1:A:669:ASN:HD22	1:A:706:GLY:HA2	1.57	0.70
1:E:538:SER:OG	1:E:661:PHE:HA	1.92	0.70
1:F:510:TRP:HB3	1:F:679:ALA:HB2	1.74	0.70
1:B:538:SER:HB3	1:B:661:PHE:HD2	1.57	0.69
1:D:510:TRP:CE3	1:D:670:ILE:HG22	2.27	0.69
1:F:224:ASP:O	1:F:228:SER:HB2	1.91	0.69
1:B:648:ARG:NH1	1:B:651:VAL:HG22	2.06	0.69
1:B:311:GLU:OE1	1:B:314:ARG:NE	2.23	0.69
1:F:311:GLU:OE1	1:F:314:ARG:NE	2.22	0.69
1:E:590:ASP:OD2	1:E:594:LYS:NZ	2.25	0.69
1:A:546:HIS:O	1:A:708:LYS:HB3	1.93	0.69
1:B:589:PHE:CE1	1:B:600:VAL:HG11	2.26	0.69
1:C:706:GLY:O	1:C:710:LEU:N	2.24	0.69
1:E:232:ARG:O	1:E:236:ALA:HB3	1.92	0.69
1:F:545:PRO:HA	1:F:547:SER:N	2.06	0.69
1:F:612:VAL:HG12	1:F:617:ARG:HB2	1.73	0.69
1:D:303:ARG:HD3	1:D:353:GLN:CG	2.22	0.69
1:F:536:LEU:HD21	1:F:632:LYS:O	1.92	0.69
1:B:670:ILE:HG22	1:B:672:THR:H	1.58	0.69
1:E:303:ARG:HG3	1:E:357:LYS:HE2	1.74	0.69

Continued on next page...

Continued from previous page...

Atom-1	Atom-2	Interatomic distance (Å)	Clash overlap (Å)
1:F:222:GLY:HA3	1:F:399:ASP:H	1.57	0.69
1:A:565:ILE:HG13	1:A:599:CYS:HB3	1.74	0.69
1:A:602:VAL:HG12	1:A:605:ILE:HG12	1.73	0.69
1:D:397:LEU:HD23	1:D:398:PRO:HD2	1.75	0.69
1:E:674:GLU:HA	1:E:677:LEU:HD12	1.75	0.69
1:A:677:LEU:HD21	1:A:695:ALA:HA	1.75	0.68
1:E:652:LEU:CD2	1:E:657:MET:HB3	2.23	0.68
1:F:713:LEU:HD22	1:F:732:LEU:HB3	1.73	0.68
1:D:548:GLY:HA2	2:D:801:ADP:C5'	2.23	0.68
1:E:536:LEU:HD12	1:E:640:LEU:O	1.94	0.68
1:F:546:HIS:CE1	1:F:709:LYS:HB3	2.28	0.68
1:C:533:ARG:HB2	1:D:715:GLU:OE1	1.92	0.68
1:E:652:LEU:HD23	1:E:657:MET:HB3	1.76	0.68
1:C:331:ASP:HA	1:C:379:ILE:HD11	1.76	0.68
1:A:521:GLY:O	1:A:525:VAL:HG23	1.95	0.67
1:E:237:SER:HA	1:F:453:MET:HG3	1.76	0.67
1:D:358:ILE:HD12	1:D:388:ARG:HB3	1.76	0.67
1:C:542:GLU:CB	1:C:649:LYS:HD3	2.24	0.67
1:D:527:GLN:HE21	1:E:715:GLU:HG3	1.59	0.67
1:A:564:PHE:CE1	1:A:566:LYS:HB2	2.29	0.67
1:B:358:ILE:HD12	1:B:388:ARG:HB3	1.77	0.67
1:C:649:LYS:HE2	1:C:658:LEU:HD13	1.77	0.67
1:B:542:GLU:HB3	1:B:649:LYS:HG3	1.77	0.67
1:B:649:LYS:HE3	1:B:658:LEU:HD11	1.76	0.67
1:F:236:ALA:HA	1:F:239:VAL:HG12	1.77	0.67
1:B:258:LEU:HB3	1:B:395:ILE:HD11	1.77	0.67
1:E:510:TRP:CD1	1:E:514:VAL:HG21	2.30	0.67
1:E:618:PHE:HZ	1:F:612:VAL:HG11	1.60	0.67
1:D:312:GLU:OE1	1:D:323:HIS:ND1	2.24	0.66
1:B:224:ASP:O	1:B:228:SER:HB2	1.95	0.66
1:E:624:GLN:NE2	1:F:610:ASP:OD1	2.29	0.66
1:E:681:GLU:HA	1:E:691:ARG:HE	1.59	0.66
1:A:531:SER:OG	1:B:715:GLU:OE1	2.14	0.66
1:D:263:GLY:O	1:D:437:SER:OG	2.12	0.66
1:B:452:ALA:HA	1:B:455:ARG:NH2	2.10	0.66
1:B:528:THR:O	1:B:639:LYS:HD2	1.96	0.66
1:D:627:LEU:HD21	1:D:657:MET:HG3	1.77	0.66
1:E:671:ALA:HA	1:E:703:VAL:O	1.95	0.66
1:B:538:SER:HB3	1:B:661:PHE:CD2	2.30	0.66
1:F:695:ALA:HB1	1:F:699:LYS:HE3	1.78	0.66
1:A:653:GLN:O	1:A:653:GLN:NE2	2.28	0.66

Continued on next page...

Continued from previous page...

Atom-1	Atom-2	Interatomic distance (Å)	Clash overlap (Å)
1:C:506:GLY:N	2:C:801:ADP:O2'	2.29	0.66
1:B:589:PHE:HE2	1:B:629:LEU:HB3	1.61	0.66
1:A:526:GLN:HE21	1:A:530:ASN:HD22	1.43	0.65
1:D:245:VAL:O	1:D:249:GLY:N	2.29	0.65
1:E:542:GLU:O	1:E:666:HIS:ND1	2.28	0.65
1:A:510:TRP:HB2	1:A:679:ALA:HA	1.78	0.65
1:D:234:ALA:HA	1:D:253:VAL:HG11	1.78	0.65
1:E:245:VAL:O	1:E:249:GLY:N	2.28	0.65
1:E:592:ALA:HB1	1:E:640:LEU:HD22	1.77	0.65
1:E:437:SER:OG	1:E:440:GLU:HG2	1.96	0.65
1:E:625:ALA:O	1:E:629:LEU:HG	1.97	0.65
1:A:687:LYS:N	1:A:690:GLU:OE1	2.29	0.65
1:D:284:VAL:HG23	1:D:324:ILE:O	1.97	0.65
1:E:640:LEU:HD12	1:E:641:LEU:N	2.12	0.65
1:D:404:LEU:HA	1:D:407:LEU:HD12	1.78	0.65
1:D:573:MET:SD	1:D:581:LYS:HD3	2.36	0.65
1:D:695:ALA:HB1	1:D:699:LYS:HE3	1.79	0.65
1:F:358:ILE:HD12	1:F:388:ARG:HB3	1.77	0.65
1:A:628:VAL:HG11	1:B:571:ASP:HA	1.79	0.64
1:A:707:ILE:HA	1:A:710:LEU:HB2	1.79	0.64
1:C:261:PRO:HB2	1:C:594:LYS:HG3	1.77	0.64
1:F:510:TRP:HB2	1:F:675:GLN:O	1.97	0.64
1:A:256:ILE:HG13	1:A:370:ILE:HG22	1.80	0.64
1:D:620:ASN:O	1:D:624:GLN:HG2	1.96	0.64
1:E:509:LYS:HD2	1:E:515:THR:HG22	1.79	0.64
1:B:404:LEU:HG	1:B:426:ILE:HG22	1.80	0.64
1:B:548:GLY:HA3	2:B:801:ADP:H2	1.63	0.64
1:B:624:GLN:NE2	1:C:610:ASP:O	2.30	0.64
1:F:438:GLY:O	1:F:441:LEU:N	2.30	0.64
1:E:502:TYR:OH	1:E:569:SER:OG	2.15	0.64
1:F:546:HIS:CD2	1:F:546:HIS:H	2.15	0.64
1:F:570:PRO:HG2	1:F:604:ASP:CB	2.28	0.64
1:D:319:ASN:HB3	1:D:320:SER:HB2	1.79	0.64
1:C:358:ILE:CB	1:C:388:ARG:HG3	2.26	0.64
1:F:570:PRO:HA	1:F:573:MET:HE2	1.78	0.64
1:A:223:LEU:HD12	1:A:227:PHE:HB2	1.80	0.64
1:E:224:ASP:O	1:E:228:SER:HB2	1.98	0.64
1:E:358:ILE:HD12	1:E:388:ARG:HB3	1.79	0.64
1:E:710:LEU:O	1:E:714:ILE:HG13	1.97	0.64
1:A:617:ARG:HG3	1:A:617:ARG:HH11	1.62	0.64
1:E:505:ASN:HB2	2:E:801:ADP:O3'	1.98	0.64

Continued on next page...

Continued from previous page...

Atom-1	Atom-2	Interatomic distance (Å)	Clash overlap (Å)
1:B:533:ARG:HG3	1:B:534:THR:HG23	1.79	0.64
1:C:711:LEU:HA	1:C:714:ILE:HD12	1.80	0.64
1:F:307:ALA:O	1:F:311:GLU:HG2	1.98	0.64
1:B:307:ALA:O	1:B:311:GLU:HG2	1.98	0.63
1:B:540:LEU:HD11	1:B:649:LYS:HZ3	1.60	0.63
1:B:713:LEU:HD22	1:B:732:LEU:HB3	1.79	0.63
1:F:538:SER:O	1:F:663:THR:HG22	1.98	0.63
1:A:232:ARG:O	1:A:236:ALA:HB2	1.97	0.63
1:B:628:VAL:HG13	1:C:571:ASP:OD1	1.97	0.63
1:C:311:GLU:HA	1:C:314:ARG:HG2	1.81	0.63
1:A:258:LEU:HA	1:A:393:MET:O	1.98	0.63
1:A:544:PRO:HG2	1:A:669:ASN:OD1	1.98	0.63
1:D:256:ILE:HG22	1:D:391:VAL:HG12	1.80	0.63
1:E:602:VAL:O	1:E:644:GLY:HA2	1.98	0.63
1:A:687:LYS:HB2	1:A:690:GLU:HG3	1.81	0.63
1:F:562:PHE:CD1	1:F:599:CYS:HB2	2.34	0.63
1:D:404:LEU:HD11	1:D:427:LYS:HE3	1.81	0.63
1:D:604:ASP:HB3	1:D:607:ARG:CB	2.28	0.63
1:F:635:PRO:O	1:F:638:ARG:HG2	1.98	0.63
1:A:313:GLN:NE2	1:A:365:ASN:O	2.32	0.63
1:D:256:ILE:O	1:D:370:ILE:HA	1.99	0.63
1:E:307:ALA:O	1:E:311:GLU:HG2	1.98	0.63
1:B:570:PRO:HD3	1:B:603:ASP:HB3	1.81	0.63
1:C:383:LEU:HD22	1:C:388:ARG:HD2	1.80	0.63
1:C:511:GLY:HA3	1:C:513:PRO:HD2	1.78	0.62
1:F:546:HIS:O	1:F:546:HIS:ND1	2.32	0.62
1:D:503:ILE:HA	2:D:801:ADP:O2'	1.99	0.62
1:A:563:PRO:HD2	1:A:597:LEU:HD22	1.81	0.62
1:D:521:GLY:O	1:D:525:VAL:HG23	1.98	0.62
1:E:550:THR:HA	1:E:645:THR:HG21	1.81	0.62
1:E:686:PHE:CE1	1:E:714:ILE:HG23	2.31	0.62
1:D:548:GLY:HA2	2:D:801:ADP:H5'1	1.80	0.62
1:F:268:LEU:HD21	1:F:438:GLY:HA3	1.80	0.62
1:A:508:ILE:HG13	1:A:508:ILE:O	2.00	0.62
1:B:589:PHE:CE2	1:B:629:LEU:HB3	2.34	0.62
1:C:285:VAL:HG13	1:C:326:ILE:HD11	1.81	0.62
1:C:621:LEU:HD11	1:D:575:GLY:HA2	1.82	0.62
1:D:599:CYS:SG	1:D:641:LEU:HD22	2.39	0.62
1:F:404:LEU:O	1:F:408:HIS:HB2	1.99	0.62
1:F:436:PHE:HD2	1:F:444:LEU:HD11	1.64	0.62
1:F:550:THR:HA	1:F:645:THR:HG21	1.81	0.62

Continued on next page...

Continued from previous page...

Atom-1	Atom-2	Interatomic distance (Å)	Clash overlap (Å)
1:C:550:THR:HB	2:C:801:ADP:PA	2.39	0.62
1:B:326:ILE:HG22	1:B:370:ILE:HG13	1.82	0.62
1:E:380:ASP:OD1	1:E:382:ALA:N	2.33	0.62
1:F:380:ASP:OD1	1:F:382:ALA:N	2.33	0.62
1:E:326:ILE:HG22	1:E:370:ILE:HG13	1.82	0.62
1:A:231:PHE:CD1	1:A:235:PHE:HE2	2.17	0.61
1:B:527:GLN:HB2	1:C:719:GLN:HG3	1.82	0.61
1:C:624:GLN:O	1:C:628:VAL:HG23	2.00	0.61
1:E:705:ILE:HG13	1:E:709:LYS:HG3	1.81	0.61
1:A:720:MET:O	1:A:725:ARG:NE	2.23	0.61
1:D:286:ASN:HB2	1:D:327:PHE:HD1	1.65	0.61
1:D:554:ALA:O	1:D:558:GLU:HG2	2.00	0.61
1:E:532:ASP:OD2	1:E:533:ARG:N	2.32	0.61
1:C:728:LYS:O	1:C:732:LEU:HG	2.00	0.61
1:B:245:VAL:O	1:B:249:GLY:N	2.32	0.61
1:B:542:GLU:HG3	1:B:666:HIS:CE1	2.35	0.61
1:C:670:ILE:HG22	1:C:672:THR:H	1.65	0.61
1:D:606:GLU:O	1:D:610:ASP:N	2.33	0.61
1:F:546:HIS:CE1	1:F:709:LYS:CB	2.84	0.61
1:C:542:GLU:HB3	1:C:649:LYS:HD3	1.81	0.61
1:C:334:CYS:HA	1:C:351:VAL:HG22	1.81	0.61
1:D:507:ILE:HA	2:D:801:ADP:C8	2.36	0.61
1:E:581:LYS:NZ	1:E:610:ASP:OD1	2.30	0.61
1:B:380:ASP:OD1	1:B:382:ALA:N	2.33	0.61
1:D:261:PRO:HG2	1:D:264:CYS:HB2	1.82	0.61
1:F:566:LYS:HD2	1:F:567:ILE:N	2.16	0.61
1:B:437:SER:OG	1:B:440:GLU:HG2	2.00	0.60
1:B:625:ALA:O	1:B:629:LEU:HG	2.01	0.60
1:C:579:THR:O	1:C:583:GLN:HG2	2.01	0.60
1:D:513:PRO:HB3	1:D:516:ARG:HE	1.65	0.60
1:D:656:GLU:OE1	1:E:613:PRO:HB3	2.01	0.60
1:E:513:PRO:O	1:E:517:VAL:HG23	2.01	0.60
1:A:408:HIS:HA	1:A:426:ILE:HD12	1.83	0.60
1:F:650:ASP:O	1:F:653:GLN:HG3	2.01	0.60
1:A:223:LEU:CD1	1:A:227:PHE:HB2	2.32	0.60
1:A:299:GLU:HG2	1:A:353:GLN:HG2	1.82	0.60
1:B:421:SER:HB3	1:B:424:VAL:HG23	1.83	0.60
1:C:407:LEU:CD1	1:C:426:ILE:HG23	2.31	0.60
1:D:246:GLU:O	1:E:413:ARG:NH1	2.30	0.60
1:D:249:GLY:HA3	1:E:413:ARG:NH1	2.16	0.60
1:F:326:ILE:HG22	1:F:370:ILE:HG13	1.83	0.60

Continued on next page...

Continued from previous page...

Atom-1	Atom-2	Interatomic distance (Å)	Clash overlap (Å)
1:A:598:SER:OG	1:A:640:LEU:HD12	2.01	0.60
1:B:563:PRO:HD2	1:B:597:LEU:HB2	1.82	0.60
1:C:399:ASP:O	1:C:403:ARG:N	2.29	0.60
1:A:677:LEU:HG	1:A:695:ALA:HB2	1.83	0.60
1:C:375:ARG:HH12	1:C:378:LEU:HG	1.65	0.60
1:C:677:LEU:HD11	1:C:698:VAL:HG21	1.84	0.60
1:D:512:ASP:O	1:D:515:THR:OG1	2.18	0.60
1:F:715:GLU:O	1:F:719:GLN:HG2	2.00	0.60
1:C:247:GLN:HA	1:D:417:HIS:CD2	2.36	0.60
1:C:577:SER:O	1:C:580:ALA:N	2.33	0.60
1:A:510:TRP:CB	1:A:679:ALA:HA	2.31	0.60
1:A:565:ILE:HA	1:A:599:CYS:O	2.02	0.60
1:C:254:LYS:O	1:C:368:LEU:HA	2.02	0.60
1:E:514:VAL:HG13	2:E:801:ADP:N6	2.17	0.60
1:E:544:PRO:O	1:E:547:SER:HB3	2.01	0.60
1:F:268:LEU:CD2	1:F:439:ALA:H	2.15	0.60
1:F:508:ILE:HD11	1:F:510:TRP:HD1	1.67	0.60
1:A:582:CYS:SG	1:A:621:LEU:HG	2.42	0.60
1:C:540:LEU:HD12	1:C:644:GLY:O	2.01	0.60
1:C:606:GLU:HB2	1:C:648:ARG:HD2	1.82	0.60
1:E:247:GLN:HA	1:F:417:HIS:ND1	2.17	0.60
1:B:513:PRO:HD2	1:B:670:ILE:HD11	1.83	0.60
1:B:540:LEU:HA	1:B:644:GLY:O	2.02	0.60
1:C:236:ALA:HB1	1:D:453:MET:HB3	1.84	0.60
1:F:521:GLY:O	1:F:525:VAL:HG23	2.02	0.60
1:A:236:ALA:HB1	1:B:450:SER:HA	1.82	0.60
1:A:270:ALA:O	1:A:273:ILE:HG22	2.01	0.60
1:A:508:ILE:HB	1:A:682:LEU:HB3	1.83	0.60
1:B:407:LEU:CD1	1:B:426:ILE:HG23	2.31	0.60
1:C:590:ASP:HA	1:C:593:TYR:CD2	2.37	0.60
1:D:407:LEU:HG	1:D:441:LEU:HD11	1.83	0.60
1:B:510:TRP:HZ3	1:B:670:ILE:HD12	1.67	0.59
1:B:541:LEU:HD11	1:B:549:LYS:HA	1.83	0.59
1:E:404:LEU:O	1:E:408:HIS:HB2	2.02	0.59
1:E:508:ILE:HD11	1:E:707:ILE:HD11	1.84	0.59
1:F:449:GLN:O	1:F:453:MET:HG2	2.01	0.59
1:B:383:LEU:O	1:B:389:LEU:HB2	2.02	0.59
1:C:695:ALA:HB1	1:C:699:LYS:HE3	1.84	0.59
1:D:527:GLN:NE2	1:E:715:GLU:HG3	2.17	0.59
1:D:585:MET:O	1:D:589:PHE:HD2	1.84	0.59
1:A:571:ASP:HA	1:A:574:ILE:HG23	1.85	0.59

Continued on next page...

Continued from previous page...

Atom-1	Atom-2	Interatomic distance (Å)	Clash overlap (Å)
1:D:299:GLU:OE1	1:D:350:VAL:HG13	2.02	0.59
1:D:312:GLU:CG	1:D:313:GLN:H	2.15	0.59
1:E:628:VAL:O	1:E:632:LYS:N	2.36	0.59
1:B:539:VAL:HG21	1:B:665:ILE:HD12	1.84	0.59
1:D:652:LEU:HB3	1:D:658:LEU:HB2	1.83	0.59
1:A:686:PHE:O	1:A:691:ARG:NH2	2.36	0.59
1:A:694:ILE:O	1:A:698:VAL:HG13	2.02	0.59
1:C:606:GLU:HG2	1:C:607:ARG:N	2.18	0.59
1:B:404:LEU:O	1:B:408:HIS:HB2	2.02	0.59
1:B:548:GLY:HA3	2:B:801:ADP:C2	2.37	0.59
1:B:670:ILE:HD13	1:B:675:GLN:HB3	1.85	0.59
1:A:382:ALA:O	1:A:385:ARG:HG2	2.03	0.59
1:D:593:TYR:O	1:D:638:ARG:HG2	2.01	0.59
1:C:551:ALA:HB2	2:C:801:ADP:H3'	1.84	0.59
1:C:624:GLN:NE2	1:D:610:ASP:HB2	2.18	0.59
1:D:604:ASP:HB3	1:D:607:ARG:HB3	1.84	0.59
1:A:307:ALA:O	1:A:310:GLU:HG3	2.03	0.59
1:B:695:ALA:HB1	1:B:699:LYS:HE3	1.85	0.59
1:E:449:GLN:O	1:E:453:MET:HG2	2.03	0.59
1:F:606:GLU:OE2	1:F:647:SER:HB2	2.02	0.59
1:A:624:GLN:OE1	1:B:607:ARG:NH1	2.36	0.58
1:B:284:VAL:HG23	1:B:324:ILE:O	2.03	0.58
1:E:527:GLN:NE2	1:F:716:MET:HG2	2.18	0.58
1:E:648:ARG:NE	1:E:650:ASP:OD1	2.34	0.58
1:E:697:GLN:HG3	1:E:730:LEU:HD11	1.83	0.58
1:A:671:ALA:HA	1:A:703:VAL:O	2.03	0.58
1:B:261:PRO:HG2	1:B:264:CYS:HB2	1.84	0.58
1:C:669:ASN:CG	1:C:706:GLY:HA2	2.24	0.58
1:F:562:PHE:HB2	1:F:565:ILE:HG12	1.84	0.58
1:A:597:LEU:HD23	1:A:597:LEU:C	2.23	0.58
1:B:571:ASP:OD2	1:B:571:ASP:N	2.35	0.58
1:C:404:LEU:O	1:C:408:HIS:HB2	2.03	0.58
1:C:527:GLN:HB2	1:D:719:GLN:HG3	1.84	0.58
1:D:519:ASP:O	1:D:523:LEU:HG	2.03	0.58
1:E:383:LEU:O	1:E:389:LEU:HB2	2.02	0.58
1:F:549:LYS:HE2	1:F:645:THR:HB	1.86	0.58
1:C:694:ILE:O	1:C:698:VAL:HG22	2.04	0.58
1:E:284:VAL:HG23	1:E:324:ILE:O	2.03	0.58
1:B:449:GLN:O	1:B:453:MET:HG3	2.03	0.58
1:B:526:GLN:HE21	1:C:719:GLN:HB3	1.68	0.58
1:B:533:ARG:HD2	1:C:711:LEU:HD13	1.86	0.58

Continued on next page...

Continued from previous page...

Atom-1	Atom-2	Interatomic distance (Å)	Clash overlap (Å)
1:C:540:LEU:HB2	1:C:661:PHE:CD2	2.38	0.58
1:D:513:PRO:O	1:D:516:ARG:HG2	2.03	0.58
1:D:528:THR:HG22	1:D:597:LEU:HD11	1.85	0.58
1:B:236:ALA:HA	1:B:239:VAL:HG12	1.86	0.58
1:C:653:GLN:HG3	1:C:658:LEU:HD23	1.86	0.58
1:F:383:LEU:O	1:F:389:LEU:HB2	2.02	0.58
1:F:407:LEU:CD1	1:F:426:ILE:HG23	2.33	0.58
1:F:513:PRO:O	1:F:517:VAL:HG23	2.03	0.58
1:A:222:GLY:H	1:A:405:GLN:HB3	1.68	0.58
1:C:436:PHE:HB3	1:C:440:GLU:OE1	2.04	0.58
1:C:658:LEU:HD11	1:C:664:THR:HG21	1.85	0.58
1:F:410:HIS:O	1:F:414:MET:HG2	2.02	0.58
1:A:411:THR:OG1	1:A:426:ILE:HD11	2.03	0.58
1:E:236:ALA:HA	1:E:239:VAL:CG1	2.33	0.58
1:E:407:LEU:CD1	1:E:426:ILE:HG23	2.32	0.58
1:E:502:TYR:CZ	1:E:567:ILE:HG21	2.38	0.58
1:A:678:GLU:O	1:A:681:GLU:HG2	2.03	0.58
1:C:614:ILE:C	1:C:616:PRO:HA	2.24	0.58
1:E:548:GLY:HA2	2:E:801:ADP:O5'	2.04	0.58
1:E:624:GLN:OE1	1:E:624:GLN:HA	2.02	0.58
1:A:690:GLU:O	1:A:694:ILE:HG13	2.04	0.57
1:B:236:ALA:O	1:B:239:VAL:HG12	2.04	0.57
1:D:380:ASP:OD1	1:D:382:ALA:N	2.36	0.57
1:D:383:LEU:O	1:D:389:LEU:HB2	2.03	0.57
1:D:711:LEU:O	1:D:715:GLU:HG2	2.04	0.57
1:E:693:THR:O	1:E:697:GLN:NE2	2.20	0.57
1:F:602:VAL:N	1:F:643:ILE:O	2.23	0.57
1:D:527:GLN:OE1	1:E:716:MET:HA	2.04	0.57
1:E:296:GLY:H	1:E:297:GLU:CB	2.18	0.57
1:F:284:VAL:HG23	1:F:324:ILE:O	2.03	0.57
1:A:539:VAL:HG13	1:A:643:ILE:HA	1.87	0.57
1:A:539:VAL:HG23	1:A:665:ILE:HD13	1.85	0.57
1:B:395:ILE:HD12	1:B:395:ILE:H	1.69	0.57
1:B:549:LYS:NZ	1:B:647:SER:HA	2.19	0.57
1:B:670:ILE:HG21	1:B:675:GLN:OE1	2.04	0.57
1:C:688:ASP:OD1	1:C:691:ARG:NH2	2.25	0.57
1:D:524:LEU:O	1:D:527:GLN:HB3	2.04	0.57
1:D:625:ALA:O	1:D:629:LEU:HG	2.05	0.57
1:D:651:VAL:O	1:D:655:MET:HG2	2.03	0.57
1:A:672:THR:OG1	1:A:675:GLN:OE1	2.14	0.57
1:B:605:ILE:HD11	1:B:644:GLY:HA3	1.87	0.57

Continued on next page...

Continued from previous page...

Atom-1	Atom-2	Interatomic distance (Å)	Clash overlap (Å)
1:B:620:ASN:HD21	1:B:624:GLN:HE21	1.51	0.57
1:C:449:GLN:O	1:C:453:MET:HG2	2.04	0.57
1:C:508:ILE:HG13	1:C:510:TRP:CD1	2.37	0.57
1:C:509:LYS:O	1:C:682:LEU:HD12	2.04	0.57
1:A:598:SER:O	1:A:640:LEU:HA	2.05	0.57
1:B:552:LEU:O	1:B:556:ILE:HG13	2.04	0.57
1:E:640:LEU:HD12	1:E:641:LEU:H	1.68	0.57
1:A:257:LEU:HG	1:A:389:LEU:HD12	1.87	0.57
1:A:267:THR:OG1	1:A:328:ASP:OD2	2.21	0.57
1:E:354:LEU:O	1:E:358:ILE:HG12	2.05	0.57
1:F:222:GLY:CA	1:F:399:ASP:HB2	2.33	0.57
1:F:554:ALA:O	1:F:558:GLU:HG3	2.05	0.57
1:B:593:TYR:O	1:B:638:ARG:NE	2.38	0.57
1:C:375:ARG:NH2	1:C:377:ASP:OD1	2.38	0.57
1:D:267:THR:HA	1:D:372:MET:SD	2.45	0.57
1:E:721:ASP:O	1:E:725:ARG:HG3	2.05	0.57
1:F:354:LEU:O	1:F:358:ILE:HG12	2.05	0.57
1:B:510:TRP:CZ3	1:B:670:ILE:HD12	2.40	0.57
1:D:543:GLY:N	1:D:549:LYS:HD3	2.19	0.57
1:D:551:ALA:HB3	2:D:801:ADP:N3	2.20	0.57
1:D:648:ARG:HG3	1:D:651:VAL:HG23	1.87	0.57
1:F:604:ASP:HB3	1:F:607:ARG:HB2	1.85	0.57
1:F:653:GLN:HB3	1:F:658:LEU:HD23	1.87	0.57
1:B:578:GLU:HG3	1:B:619:SER:HB2	1.86	0.57
1:D:303:ARG:HD3	1:D:353:GLN:HG3	1.87	0.57
1:C:677:LEU:HD11	1:C:698:VAL:CG2	2.34	0.56
1:A:546:HIS:ND1	1:A:709:LYS:HE3	2.20	0.56
1:B:221:GLY:HA3	1:B:406:ILE:CD1	2.35	0.56
1:C:536:LEU:HD12	1:C:640:LEU:HB3	1.87	0.56
1:C:613:PRO:HD3	1:C:648:ARG:HH22	1.70	0.56
1:D:528:THR:CB	1:D:641:LEU:HD12	2.34	0.56
1:E:652:LEU:HD22	1:E:658:LEU:HD13	1.86	0.56
1:F:245:VAL:O	1:F:249:GLY:N	2.36	0.56
1:A:549:LYS:HB3	1:A:667:VAL:HG21	1.86	0.56
1:B:242:PRO:HD2	1:B:243:GLU:H	1.70	0.56
1:B:354:LEU:O	1:B:358:ILE:HG12	2.06	0.56
1:B:546:HIS:O	1:B:547:SER:OG	2.17	0.56
1:D:284:VAL:HB	1:D:325:ILE:HA	1.86	0.56
1:E:242:PRO:HD2	1:E:243:GLU:H	1.70	0.56
1:E:713:LEU:HD22	1:E:732:LEU:HD13	1.87	0.56
1:F:508:ILE:CD1	1:F:510:TRP:HD1	2.18	0.56

Continued on next page...

Continued from previous page...

Atom-1	Atom-2	Interatomic distance (Å)	Clash overlap (Å)
1:A:676:LEU:CD1	1:A:710:LEU:HD11	2.36	0.56
1:D:312:GLU:HG2	1:D:313:GLN:H	1.67	0.56
1:C:542:GLU:HG2	1:C:666:HIS:HA	1.88	0.56
1:D:312:GLU:CG	1:D:313:GLN:N	2.69	0.56
1:D:680:LEU:HB2	1:D:691:ARG:HH21	1.69	0.56
1:F:635:PRO:HD2	1:F:638:ARG:HD2	1.86	0.56
1:A:407:LEU:HD12	1:A:426:ILE:HG23	1.87	0.56
1:C:281:GLU:CB	1:C:324:ILE:HD13	2.36	0.56
1:C:688:ASP:O	1:C:692:THR:HG23	2.05	0.56
1:E:267:THR:HA	1:E:372:MET:SD	2.44	0.56
1:E:550:THR:HB	2:E:801:ADP:O1A	2.05	0.56
1:F:296:GLY:H	1:F:297:GLU:CB	2.18	0.56
1:F:518:LEU:H	1:F:518:LEU:HD12	1.70	0.56
1:B:296:GLY:H	1:B:297:GLU:CB	2.18	0.56
1:B:654:GLU:O	1:C:613:PRO:HG3	2.05	0.56
1:D:686:PHE:HB2	1:D:691:ARG:HG2	1.87	0.56
1:E:573:MET:SD	1:E:581:LYS:HG2	2.45	0.56
1:F:546:HIS:CE1	1:F:706:GLY:N	2.74	0.56
1:D:242:PRO:HD2	1:D:243:GLU:H	1.69	0.56
1:D:687:LYS:O	1:D:691:ARG:HG3	2.06	0.56
1:A:293:LYS:O	1:A:294:TYR:CG	2.59	0.56
1:A:513:PRO:O	1:A:517:VAL:HG23	2.05	0.56
1:A:536:LEU:HD23	1:A:633:ALA:HA	1.88	0.56
1:A:683:LEU:HD12	1:A:714:ILE:HD13	1.87	0.56
1:A:688:ASP:OD1	1:A:689:LYS:N	2.39	0.56
1:D:657:MET:HG2	1:D:661:PHE:CE2	2.41	0.56
1:F:261:PRO:HG2	1:F:264:CYS:HB2	1.87	0.56
1:A:231:PHE:CE1	1:A:235:PHE:HE2	2.24	0.55
1:B:582:CYS:SG	1:C:574:ILE:HG22	2.46	0.55
1:B:596:GLN:HA	1:B:638:ARG:HG2	1.87	0.55
1:E:551:ALA:HB2	2:E:801:ADP:H3'	1.88	0.55
1:B:270:ALA:O	1:B:273:ILE:HG22	2.06	0.55
1:B:571:ASP:O	1:B:574:ILE:HG13	2.05	0.55
1:B:621:LEU:HD11	1:C:575:GLY:HA2	1.87	0.55
1:E:549:LYS:HA	1:E:552:LEU:HD12	1.87	0.55
1:A:383:LEU:O	1:A:389:LEU:HB2	2.06	0.55
1:C:686:PHE:CE1	1:C:714:ILE:HG23	2.42	0.55
1:E:264:CYS:SG	1:E:395:ILE:HG21	2.46	0.55
1:F:404:LEU:HG	1:F:426:ILE:HG22	1.88	0.55
1:F:538:SER:OG	1:F:661:PHE:HD1	1.86	0.55
1:A:726:VAL:O	1:A:730:LEU:HG	2.05	0.55

Continued on next page...

Continued from previous page...

Atom-1	Atom-2	Interatomic distance (Å)	Clash overlap (Å)
1:B:508:ILE:O	2:B:801:ADP:N6	2.40	0.55
1:D:632:LYS:NZ	1:E:571:ASP:HB3	2.21	0.55
1:E:510:TRP:HB2	1:E:679:ALA:CB	2.36	0.55
1:E:587:LYS:HZ3	1:E:587:LYS:C	2.07	0.55
1:A:521:GLY:HA2	1:A:524:LEU:HD12	1.88	0.55
1:A:683:LEU:HB3	1:A:685:ASN:ND2	2.21	0.55
1:C:589:PHE:CD2	1:C:629:LEU:HD13	2.42	0.55
1:F:503:ILE:HG22	1:F:506:GLY:H	1.71	0.55
1:A:678:GLU:O	1:A:682:LEU:HD12	2.07	0.55
1:C:531:SER:OG	1:D:715:GLU:OE1	2.25	0.55
1:D:257:LEU:HB2	1:D:389:LEU:HD13	1.88	0.55
1:D:681:GLU:HG2	1:D:691:ARG:NH1	2.22	0.55
1:E:270:ALA:O	1:E:273:ILE:HG22	2.06	0.55
1:F:437:SER:O	1:F:440:GLU:HB2	2.06	0.55
1:A:531:SER:O	1:A:639:LYS:HE2	2.07	0.55
1:C:616:PRO:HG2	1:D:614:ILE:HD13	1.88	0.55
1:E:232:ARG:O	1:E:236:ALA:CB	2.54	0.55
1:F:544:PRO:O	1:F:547:SER:OG	2.25	0.55
1:A:231:PHE:CD1	1:A:235:PHE:CE2	2.95	0.55
1:A:352:ASN:HA	1:A:355:LEU:HD12	1.89	0.55
1:C:347:HIS:O	1:C:350:VAL:HG22	2.06	0.55
1:E:437:SER:O	1:E:440:GLU:HB2	2.07	0.55
1:A:300:ALA:HA	1:A:303:ARG:HG2	1.89	0.55
1:A:540:LEU:HD11	1:A:646:THR:HG22	1.88	0.55
1:F:605:ILE:HD11	1:F:644:GLY:HA3	1.88	0.55
1:A:222:GLY:O	1:A:224:ASP:N	2.40	0.55
1:B:289:GLU:O	1:B:291:LEU:N	2.32	0.55
1:D:534:THR:OG1	1:E:715:GLU:HG2	2.07	0.55
1:E:674:GLU:O	1:E:677:LEU:HB2	2.06	0.55
1:B:533:ARG:HG3	1:B:534:THR:N	2.21	0.54
1:C:375:ARG:NH1	1:C:378:LEU:HG	2.21	0.54
1:C:546:HIS:HB2	1:C:709:LYS:HB2	1.89	0.54
1:D:528:THR:OG1	1:D:537:VAL:HG21	2.07	0.54
1:E:673:GLY:HA3	1:E:698:VAL:HB	1.88	0.54
1:F:559:GLU:HA	1:F:559:GLU:OE1	2.07	0.54
1:A:625:ALA:O	1:A:629:LEU:HG	2.08	0.54
1:A:627:LEU:HD13	1:B:607:ARG:HH12	1.72	0.54
1:B:508:ILE:H	2:B:801:ADP:N6	2.01	0.54
1:B:508:ILE:HD13	1:B:683:LEU:HD21	1.88	0.54
1:C:555:LYS:HA	1:C:558:GLU:OE1	2.06	0.54
1:F:397:LEU:CB	1:F:398:PRO:CD	2.86	0.54

Continued on next page...

Continued from previous page...

Atom-1	Atom-2	Interatomic distance (Å)	Clash overlap (Å)
1:F:512:ASP:OD1	1:F:513:PRO:HD3	2.08	0.54
1:A:242:PRO:HD2	1:A:243:GLU:CD	2.28	0.54
1:A:286:ASN:HB2	1:A:327:PHE:CB	2.38	0.54
1:A:315:ARG:HG2	1:A:316:LEU:CD1	2.37	0.54
1:A:437:SER:OG	1:A:440:GLU:HG2	2.07	0.54
1:A:535:PRO:HB3	1:B:504:MET:SD	2.47	0.54
1:C:284:VAL:HG11	1:C:305:LEU:HD11	1.89	0.54
1:D:512:ASP:N	1:D:513:PRO:CD	2.71	0.54
1:E:310:GLU:OE2	1:E:357:LYS:NZ	2.40	0.54
1:E:595:SER:HB3	1:E:598:SER:HB3	1.89	0.54
1:F:411:THR:O	1:F:414:MET:HB2	2.07	0.54
1:F:436:PHE:HB3	1:F:440:GLU:CB	2.37	0.54
1:F:548:GLY:HA3	1:F:707:ILE:CG2	2.38	0.54
1:F:612:VAL:CG1	1:F:617:ARG:HB2	2.38	0.54
1:A:724:TYR:HD1	1:A:727:ARG:HH12	1.54	0.54
1:C:577:SER:O	1:C:579:THR:N	2.40	0.54
1:D:677:LEU:O	1:D:691:ARG:NH2	2.40	0.54
1:F:223:LEU:HD21	1:F:397:LEU:O	2.06	0.54
1:A:227:PHE:CE2	1:A:231:PHE:HD1	2.26	0.54
1:A:563:PRO:HG2	1:A:597:LEU:O	2.08	0.54
1:D:657:MET:HG2	1:D:661:PHE:HE2	1.73	0.54
1:A:355:LEU:HB3	1:A:388:ARG:NH1	2.23	0.54
1:A:683:LEU:HD11	1:A:711:LEU:HD23	1.89	0.54
1:D:686:PHE:CE1	1:D:714:ILE:HG23	2.42	0.54
1:E:510:TRP:HB2	1:E:679:ALA:HB2	1.88	0.54
1:E:705:ILE:HD13	1:E:710:LEU:HD13	1.89	0.54
1:F:686:PHE:HE1	1:F:714:ILE:HG23	1.73	0.54
1:C:728:LYS:HE3	1:C:732:LEU:HD21	1.90	0.54
1:D:310:GLU:O	1:D:313:GLN:NE2	2.40	0.54
1:D:670:ILE:HG12	1:D:705:ILE:O	2.08	0.54
1:A:235:PHE:CE1	1:A:277:LEU:CB	2.90	0.54
1:B:315:ARG:HG3	1:B:316:LEU:HD12	1.90	0.54
1:C:245:VAL:O	1:C:249:GLY:N	2.36	0.54
1:E:516:ARG:O	1:E:519:ASP:OD1	2.25	0.54
1:F:267:THR:HA	1:F:372:MET:SD	2.48	0.54
1:F:546:HIS:CE1	1:F:706:GLY:H	2.26	0.54
1:A:611:TYR:HD1	1:A:618:PHE:HB3	1.72	0.54
1:B:479:ASP:O	1:B:482:ALA:N	2.41	0.54
1:C:546:HIS:CB	1:C:709:LYS:HB2	2.38	0.54
1:C:677:LEU:HD21	1:C:695:ALA:CB	2.38	0.54
1:E:662:SER:HA	1:F:709:LYS:NZ	2.23	0.54

Continued on next page...

Continued from previous page...

Atom-1	Atom-2	Interatomic distance (Å)	Clash overlap (Å)
1:A:716:MET:HG2	1:A:732:LEU:HD11	1.88	0.53
1:B:576:PHE:HB2	1:B:581:LYS:HG3	1.90	0.53
1:B:648:ARG:HG3	1:B:651:VAL:HG23	1.90	0.53
1:C:686:PHE:HE1	1:C:714:ILE:HG23	1.73	0.53
1:F:562:PHE:HE2	1:F:597:LEU:HD12	1.73	0.53
1:A:227:PHE:CE1	1:A:273:ILE:HD13	2.44	0.53
1:B:569:SER:HA	1:B:603:ASP:HB3	1.88	0.53
1:C:521:GLY:HA3	1:C:556:ILE:HD13	1.91	0.53
1:C:540:LEU:HD23	1:C:649:LYS:HE3	1.90	0.53
1:F:582:CYS:SG	1:F:586:LYS:HE3	2.48	0.53
1:A:264:CYS:SG	1:A:265:GLY:N	2.80	0.53
1:A:548:GLY:N	1:A:708:LYS:HB2	2.22	0.53
1:B:267:THR:HA	1:B:372:MET:SD	2.47	0.53
1:C:591:ASP:O	1:C:594:LYS:HB3	2.08	0.53
1:B:527:GLN:NE2	1:C:716:MET:SD	2.77	0.53
1:C:308:ASP:OD1	1:C:309:ALA:N	2.41	0.53
1:E:664:THR:C	1:E:665:ILE:HD13	2.29	0.53
1:F:310:GLU:OE2	1:F:357:LYS:NZ	2.41	0.53
1:F:510:TRP:HZ3	1:F:675:GLN:NE2	2.06	0.53
1:A:406:ILE:O	1:A:409:ILE:HG22	2.07	0.53
1:C:227:PHE:O	1:C:231:PHE:HB2	2.09	0.53
1:C:256:ILE:HA	1:C:391:VAL:HG13	1.90	0.53
1:F:315:ARG:HG3	1:F:316:LEU:HD12	1.90	0.53
1:F:522:GLU:OE2	1:F:526:GLN:HG2	2.08	0.53
1:C:570:PRO:HG2	1:C:604:ASP:HB2	1.91	0.53
1:C:690:GLU:CB	1:C:726:VAL:HG21	2.38	0.53
1:D:265:GLY:O	1:D:268:LEU:HG	2.09	0.53
1:A:536:LEU:HD23	1:A:634:PRO:HD3	1.90	0.53
1:B:310:GLU:OE2	1:B:357:LYS:NZ	2.40	0.53
1:C:410:HIS:O	1:C:414:MET:HG2	2.09	0.53
1:C:444:LEU:HD12	1:C:445:VAL:HG23	1.91	0.53
1:C:708:LYS:HA	1:C:711:LEU:HG	1.90	0.53
1:D:527:GLN:NE2	1:E:716:MET:HA	2.24	0.53
1:D:618:PHE:CE2	1:E:614:ILE:HD12	2.43	0.53
1:F:450:SER:O	1:F:453:MET:HB2	2.09	0.53
1:F:721:ASP:HB2	1:F:724:TYR:CD1	2.42	0.53
1:C:508:ILE:O	2:C:801:ADP:N6	2.42	0.53
1:F:263:GLY:O	1:F:437:SER:HB3	2.08	0.53
1:E:604:ASP:O	1:E:608:LEU:N	2.38	0.53
1:F:242:PRO:HD2	1:F:243:GLU:H	1.72	0.53
1:A:243:GLU:O	1:A:246:GLU:HG2	2.09	0.53

Continued on next page...

Continued from previous page...

Atom-1	Atom-2	Interatomic distance (Å)	Clash overlap (Å)
1:A:306:PHE:CD1	1:A:357:LYS:HB3	2.43	0.53
1:C:611:TYR:HE1	1:C:616:PRO:HB2	1.74	0.53
1:D:375:ARG:NH2	1:D:377:ASP:OD2	2.42	0.53
1:C:242:PRO:HD2	1:C:243:GLU:H	1.73	0.52
1:F:436:PHE:CD2	1:F:444:LEU:HD11	2.44	0.52
1:F:503:ILE:HD11	1:F:551:ALA:HA	1.90	0.52
1:D:523:LEU:HD13	1:E:720:MET:SD	2.49	0.52
1:D:560:SER:HB2	1:D:562:PHE:CD1	2.45	0.52
1:F:260:GLY:N	1:F:266:LYS:HD3	2.25	0.52
1:F:440:GLU:O	1:F:444:LEU:HG	2.09	0.52
1:F:515:THR:HA	1:F:518:LEU:CD1	2.39	0.52
1:A:706:GLY:O	1:A:710:LEU:N	2.43	0.52
1:B:589:PHE:HD2	1:B:629:LEU:HD22	1.74	0.52
1:C:377:ASP:OD2	1:C:377:ASP:N	2.36	0.52
1:C:612:VAL:HG12	1:C:617:ARG:HB3	1.91	0.52
1:D:604:ASP:HB3	1:D:607:ARG:HB2	1.91	0.52
1:D:731:ALA:HA	1:D:734:ARG:NH1	2.23	0.52
1:E:696:GLN:HB3	1:E:697:GLN:NE2	2.24	0.52
1:A:286:ASN:HB2	1:A:327:PHE:HB3	1.91	0.52
1:B:576:PHE:HB3	1:B:580:ALA:HB3	1.90	0.52
1:D:628:VAL:HG13	1:E:571:ASP:OD1	2.08	0.52
1:E:684:GLY:HA2	1:E:691:ARG:NH2	2.25	0.52
1:C:490:PRO:HB2	1:C:492:PHE:N	2.25	0.52
1:C:681:GLU:HG3	1:C:691:ARG:HD2	1.91	0.52
1:D:686:PHE:HB3	1:D:690:GLU:HG3	1.91	0.52
1:F:270:ALA:O	1:F:273:ILE:HG22	2.09	0.52
1:F:529:LYS:HG3	1:F:597:LEU:HD11	1.90	0.52
1:F:617:ARG:HG3	1:F:617:ARG:HH11	1.74	0.52
1:A:263:GLY:C	1:A:437:SER:HB3	2.30	0.52
1:C:510:TRP:CZ3	1:C:670:ILE:HD12	2.45	0.52
1:C:613:PRO:HD3	1:C:648:ARG:NH2	2.24	0.52
1:E:315:ARG:HG3	1:E:316:LEU:HD12	1.90	0.52
1:F:593:TYR:O	1:F:638:ARG:HD3	2.10	0.52
1:C:388:ARG:NH1	1:C:388:ARG:HB2	2.24	0.52
1:C:715:GLU:OE1	1:C:715:GLU:HA	2.09	0.52
1:F:268:LEU:HD23	1:F:439:ALA:H	1.75	0.52
1:F:517:VAL:HG21	1:F:667:VAL:HG21	1.91	0.52
1:A:673:GLY:O	1:A:677:LEU:HD22	2.10	0.52
1:D:313:GLN:OE1	1:D:365:ASN:O	2.28	0.52
1:D:627:LEU:HD13	1:E:607:ARG:HH12	1.74	0.52
1:D:686:PHE:HE1	1:D:714:ILE:HG23	1.75	0.52

Continued on next page...

Continued from previous page...

Atom-1	Atom-2	Interatomic distance (Å)	Clash overlap (Å)
1:A:222:GLY:HA3	1:A:402:GLY:CA	2.32	0.52
1:C:611:TYR:CZ	1:C:651:VAL:HG11	2.45	0.52
1:F:236:ALA:HA	1:F:239:VAL:CG1	2.39	0.52
1:A:568:CYS:O	1:A:603:ASP:HB3	2.10	0.52
1:C:256:ILE:HG22	1:C:391:VAL:HG11	1.92	0.52
1:F:525:VAL:HG13	1:F:562:PHE:HE1	1.73	0.52
1:F:635:PRO:HB2	1:F:638:ARG:NH1	2.25	0.52
1:A:398:PRO:HG3	1:A:436:PHE:O	2.09	0.51
1:D:567:ILE:HG23	1:D:601:VAL:HB	1.92	0.51
1:A:258:LEU:O	1:A:372:MET:HA	2.10	0.51
1:A:300:ALA:O	1:A:304:LYS:HG3	2.10	0.51
1:A:548:GLY:CA	1:A:708:LYS:HB2	2.39	0.51
1:A:611:TYR:CE2	1:A:651:VAL:HG11	2.44	0.51
1:D:531:SER:HG	1:D:534:THR:HG1	1.56	0.51
1:E:327:PHE:CZ	1:E:369:VAL:HG21	2.45	0.51
1:A:549:LYS:HE3	1:A:646:THR:C	2.31	0.51
1:A:683:LEU:HB3	1:A:685:ASN:HD22	1.73	0.51
1:B:406:ILE:HD12	1:B:406:ILE:H	1.74	0.51
1:B:728:LYS:HE3	1:B:732:LEU:HD21	1.91	0.51
1:D:527:GLN:HA	1:E:719:GLN:HG3	1.92	0.51
1:D:592:ALA:HB1	1:D:640:LEU:HD13	1.93	0.51
1:D:690:GLU:O	1:D:693:THR:OG1	2.23	0.51
1:A:231:PHE:CE2	1:A:235:PHE:HD2	2.29	0.51
1:A:255:GLY:HA3	1:A:389:LEU:HD13	1.91	0.51
1:A:503:ILE:HG22	1:A:506:GLY:H	1.75	0.51
1:C:256:ILE:O	1:C:370:ILE:HA	2.10	0.51
1:D:527:GLN:NE2	1:E:715:GLU:O	2.40	0.51
1:A:222:GLY:H	1:A:405:GLN:CB	2.23	0.51
1:D:254:LYS:O	1:D:368:LEU:HA	2.10	0.51
1:C:231:PHE:O	1:C:235:PHE:HB2	2.11	0.51
1:C:445:VAL:HG12	1:C:449:GLN:HE22	1.75	0.51
1:D:522:GLU:OE2	1:D:556:ILE:HA	2.10	0.51
1:E:717:SER:OG	1:E:729:PHE:HB2	2.11	0.51
1:A:681:GLU:HA	1:A:691:ARG:CZ	2.41	0.51
1:B:221:GLY:HA3	1:B:406:ILE:HD11	1.92	0.51
1:E:527:GLN:CD	1:F:716:MET:HG2	2.31	0.51
1:F:508:ILE:C	1:F:509:LYS:HD3	2.30	0.51
1:D:298:SER:O	1:D:301:ASN:HB3	2.10	0.51
1:D:531:SER:OG	1:D:534:THR:OG1	2.27	0.51
1:C:270:ALA:O	1:C:273:ILE:HG22	2.11	0.51
1:C:510:TRP:HB2	1:C:679:ALA:CB	2.41	0.51

Continued on next page...

Continued from previous page...

Atom-1	Atom-2	Interatomic distance (Å)	Clash overlap (Å)
1:C:547:SER:HB2	1:C:549:LYS:HG3	1.93	0.51
1:C:688:ASP:HA	1:C:691:ARG:NH1	2.26	0.51
1:D:627:LEU:CD1	1:E:607:ARG:HH12	2.24	0.51
1:A:550:THR:HG23	1:A:603:ASP:OD1	2.11	0.51
1:B:421:SER:HG	1:B:479:ASP:N	2.08	0.51
1:C:285:VAL:HA	1:C:326:ILE:HG13	1.93	0.51
1:C:499:TYR:HB3	1:C:558:GLU:OE2	2.11	0.51
1:D:260:GLY:HA3	1:D:266:LYS:HD3	1.92	0.51
1:A:235:PHE:CD1	1:A:235:PHE:N	2.71	0.50
1:A:527:GLN:HB2	1:B:719:GLN:HG3	1.93	0.50
1:C:542:GLU:HB2	1:C:649:LYS:HD3	1.91	0.50
1:D:570:PRO:HA	1:D:573:MET:HB3	1.93	0.50
1:F:303:ARG:CG	1:F:357:LYS:HE2	2.41	0.50
1:F:428:GLU:O	1:F:432:GLU:HG2	2.11	0.50
1:B:507:ILE:HA	2:B:801:ADP:C5	2.45	0.50
1:F:265:GLY:CA	1:F:437:SER:HB2	2.41	0.50
1:B:348:ASP:O	1:B:352:ASN:ND2	2.45	0.50
1:C:525:VAL:HG13	1:C:562:PHE:CZ	2.46	0.50
1:D:260:GLY:N	1:D:266:LYS:HD3	2.26	0.50
1:F:658:LEU:HA	1:F:661:PHE:HD2	1.75	0.50
1:B:428:GLU:O	1:B:432:GLU:HG2	2.12	0.50
1:B:570:PRO:HG3	1:B:608:LEU:HD23	1.93	0.50
1:C:261:PRO:CB	1:C:594:LYS:HG3	2.41	0.50
1:D:310:GLU:O	1:D:313:GLN:HG2	2.12	0.50
1:D:325:ILE:O	1:D:369:VAL:HA	2.12	0.50
1:A:222:GLY:H	1:A:405:GLN:CG	2.25	0.50
1:A:270:ALA:HA	1:A:273:ILE:HG22	1.93	0.50
1:A:411:THR:HG21	1:A:426:ILE:HD11	1.93	0.50
1:C:511:GLY:CA	1:C:513:PRO:HD2	2.41	0.50
1:A:687:LYS:NZ	1:A:722:PRO:HB3	2.26	0.50
1:B:549:LYS:HZ3	1:B:647:SER:HA	1.76	0.50
1:B:606:GLU:OE1	1:B:606:GLU:N	2.45	0.50
1:B:627:LEU:CD2	1:B:657:MET:HG3	2.40	0.50
1:C:584:ALA:O	1:C:588:ILE:HG13	2.11	0.50
1:E:261:PRO:HB3	1:E:594:LYS:HE2	1.93	0.50
1:E:404:LEU:HG	1:E:426:ILE:HG22	1.94	0.50
1:E:586:LYS:NZ	1:F:574:ILE:O	2.36	0.50
1:E:627:LEU:HD13	1:F:607:ARG:CZ	2.42	0.50
1:F:268:LEU:HD12	1:F:269:LEU:N	2.27	0.50
1:A:428:GLU:O	1:A:431:VAL:HG12	2.12	0.50
1:A:510:TRP:HB2	1:A:679:ALA:CA	2.42	0.50

Continued on next page...

Continued from previous page...

Atom-1	Atom-2	Interatomic distance (Å)	Clash overlap (Å)
1:C:331:ASP:HA	1:C:379:ILE:CD1	2.42	0.50
1:C:730:LEU:O	1:C:734:ARG:HG3	2.12	0.50
1:D:236:ALA:HB1	1:E:453:MET:HG3	1.93	0.50
1:D:313:GLN:HG3	1:D:314:ARG:N	2.27	0.50
1:D:543:GLY:H	1:D:549:LYS:HD3	1.76	0.50
1:A:399:ASP:O	1:A:403:ARG:N	2.22	0.50
1:B:423:ASP:HB2	1:B:479:ASP:N	2.27	0.50
1:E:612:VAL:HG11	1:E:617:ARG:HH21	1.76	0.50
1:C:511:GLY:C	1:C:513:PRO:HD2	2.33	0.49
1:C:568:CYS:HB2	1:C:602:VAL:HA	1.93	0.49
1:C:614:ILE:O	1:C:616:PRO:HA	2.12	0.49
1:D:330:ILE:HD12	1:D:331:ASP:N	2.27	0.49
1:E:553:ALA:HA	1:E:556:ILE:HD12	1.94	0.49
1:E:684:GLY:HA2	1:E:691:ARG:HH21	1.77	0.49
1:A:509:LYS:HD2	1:A:509:LYS:N	2.26	0.49
1:B:303:ARG:CG	1:B:357:LYS:HE2	2.41	0.49
1:B:516:ARG:O	1:B:519:ASP:OD1	2.30	0.49
1:B:631:LYS:NZ	1:C:604:ASP:OD2	2.38	0.49
1:C:707:ILE:HD12	1:C:710:LEU:HD23	1.94	0.49
1:A:326:ILE:HG22	1:A:370:ILE:CG1	2.39	0.49
1:B:626:LEU:O	1:B:630:LEU:HG	2.11	0.49
1:B:648:ARG:HH11	1:B:651:VAL:HG22	1.75	0.49
1:E:233:ARG:HG2	1:F:454:ASN:HB2	1.94	0.49
1:E:563:PRO:HD2	1:E:597:LEU:O	2.11	0.49
1:F:514:VAL:O	1:F:518:LEU:HD12	2.12	0.49
1:A:261:PRO:HD2	1:A:396:GLY:HA2	1.94	0.49
1:C:612:VAL:CG1	1:C:617:ARG:HB3	2.41	0.49
1:D:681:GLU:HG2	1:D:691:ARG:CZ	2.42	0.49
1:E:510:TRP:CE2	1:E:707:ILE:HB	2.47	0.49
1:E:519:ASP:O	1:E:522:GLU:HB2	2.13	0.49
1:E:540:LEU:HD12	1:E:644:GLY:O	2.13	0.49
1:B:256:ILE:O	1:B:370:ILE:HA	2.13	0.49
1:B:455:ARG:NH2	1:B:481:LEU:CB	2.75	0.49
1:C:513:PRO:HA	1:C:516:ARG:HG2	1.94	0.49
1:C:513:PRO:HD3	1:C:675:GLN:NE2	2.28	0.49
1:D:402:GLY:HA2	1:D:405:GLN:OE1	2.12	0.49
1:D:548:GLY:HA2	2:D:801:ADP:H5'2	1.91	0.49
1:D:628:VAL:O	1:D:632:LYS:N	2.46	0.49
1:E:303:ARG:CG	1:E:357:LYS:HE2	2.41	0.49
1:E:524:LEU:HD11	1:E:663:THR:HG21	1.94	0.49
1:F:261:PRO:HB3	1:F:594:LYS:CB	2.43	0.49

Continued on next page...

Continued from previous page...

Atom-1	Atom-2	Interatomic distance (Å)	Clash overlap (Å)
1:F:544:PRO:HD2	1:F:669:ASN:OD1	2.13	0.49
1:B:436:PHE:HB3	1:B:440:GLU:CB	2.42	0.49
1:C:322:LEU:HD22	1:C:366:ASN:O	2.13	0.49
1:C:428:GLU:O	1:C:432:GLU:HG2	2.12	0.49
1:C:703:VAL:O	1:C:704:TRP:HD1	1.95	0.49
1:D:268:LEU:HA	1:D:271:ARG:CD	2.43	0.49
1:D:527:GLN:HE22	1:E:716:MET:HA	1.78	0.49
1:E:221:GLY:HA3	1:E:406:ILE:HD12	1.94	0.49
1:E:590:ASP:O	1:E:593:TYR:HB2	2.13	0.49
1:A:222:GLY:H	1:A:405:GLN:HG2	1.76	0.49
1:A:313:GLN:OE1	1:A:317:GLY:HA2	2.13	0.49
1:A:509:LYS:HG2	1:A:515:THR:OG1	2.12	0.49
1:C:671:ALA:HA	1:C:703:VAL:O	2.13	0.49
1:D:581:LYS:O	1:D:585:MET:HG2	2.13	0.49
1:E:313:GLN:O	1:E:317:GLY:N	2.45	0.49
1:E:653:GLN:OE1	1:E:658:LEU:HD23	2.12	0.49
1:F:510:TRP:HA	1:F:678:GLU:HG3	1.95	0.49
1:C:325:ILE:HG13	1:C:369:VAL:HG23	1.93	0.49
1:C:512:ASP:N	1:C:513:PRO:CD	2.76	0.49
1:D:589:PHE:CE2	1:D:629:LEU:HD13	2.48	0.49
1:D:602:VAL:O	1:D:644:GLY:HA2	2.13	0.49
1:E:428:GLU:O	1:E:432:GLU:HG2	2.12	0.49
1:E:672:THR:OG1	1:E:675:GLN:HB2	2.13	0.49
1:F:236:ALA:O	1:F:239:VAL:HG12	2.13	0.49
1:A:283:LYS:HA	1:A:324:ILE:O	2.13	0.49
1:B:313:GLN:O	1:B:317:GLY:N	2.45	0.49
1:B:352:ASN:HA	1:B:355:LEU:HD12	1.95	0.49
1:C:352:ASN:HD22	1:D:289:GLU:CB	2.26	0.49
1:C:540:LEU:HD11	1:C:646:THR:HG22	1.94	0.49
1:C:604:ASP:H	1:C:645:THR:HG1	1.58	0.49
1:D:242:PRO:HD2	1:D:243:GLU:N	2.28	0.49
1:D:539:VAL:HG13	1:D:643:ILE:HG13	1.94	0.49
1:A:652:LEU:HA	1:A:655:MET:SD	2.53	0.49
1:C:560:SER:HB2	1:C:562:PHE:CE1	2.48	0.49
1:C:573:MET:HB3	1:C:576:PHE:CD2	2.48	0.49
1:D:241:PRO:HA	1:D:242:PRO:HA	1.66	0.49
1:D:424:VAL:HG21	1:D:480:PHE:HA	1.93	0.49
1:D:486:ASN:O	1:D:490:PRO:HD3	2.13	0.49
1:D:540:LEU:HD12	1:D:661:PHE:CE1	2.48	0.49
1:F:223:LEU:O	1:F:227:PHE:HB3	2.13	0.49
1:F:313:GLN:O	1:F:317:GLY:N	2.45	0.49

Continued on next page...

Continued from previous page...

Atom-1	Atom-2	Interatomic distance (Å)	Clash overlap (Å)
1:B:222:GLY:HA3	1:B:399:ASP:HB2	1.95	0.48
1:B:406:ILE:HB	1:B:441:LEU:HD13	1.95	0.48
1:B:437:SER:O	1:B:440:GLU:HB2	2.13	0.48
1:C:691:ARG:HH11	1:C:691:ARG:HB2	1.76	0.48
1:D:284:VAL:HG21	1:D:325:ILE:HG22	1.95	0.48
1:F:256:ILE:O	1:F:370:ILE:HA	2.13	0.48
1:F:526:GLN:O	1:F:530:ASN:HB2	2.11	0.48
1:F:677:LEU:O	1:F:681:GLU:HG3	2.13	0.48
1:B:281:GLU:N	1:B:282:PRO:HA	2.28	0.48
1:C:404:LEU:HG	1:C:426:ILE:HG22	1.95	0.48
1:D:721:ASP:O	1:D:725:ARG:HG3	2.13	0.48
1:E:254:LYS:O	1:E:368:LEU:HA	2.13	0.48
1:E:256:ILE:O	1:E:370:ILE:HA	2.13	0.48
1:E:689:LYS:O	1:E:692:THR:OG1	2.25	0.48
1:F:436:PHE:CD1	1:F:436:PHE:N	2.80	0.48
1:A:508:ILE:HD12	1:A:682:LEU:HB2	1.96	0.48
1:A:517:VAL:HG13	1:A:665:ILE:CG2	2.43	0.48
1:B:541:LEU:HD12	1:B:541:LEU:O	2.13	0.48
1:C:497:GLU:OE1	1:C:498:ASP:N	2.46	0.48
1:D:260:GLY:CA	1:D:266:LYS:HD3	2.43	0.48
1:D:264:CYS:SG	1:D:395:ILE:HG21	2.53	0.48
1:E:596:GLN:O	1:E:638:ARG:HA	2.13	0.48
1:E:714:ILE:O	1:E:718:LEU:HG	2.13	0.48
1:F:566:LYS:HD2	1:F:567:ILE:H	1.77	0.48
1:C:237:SER:OG	1:C:252:HIS:ND1	2.44	0.48
1:C:322:LEU:HD12	1:C:324:ILE:HD11	1.95	0.48
1:F:552:LEU:O	1:F:556:ILE:HG13	2.14	0.48
1:A:436:PHE:CD2	1:A:444:LEU:HD11	2.48	0.48
1:A:567:ILE:HG13	1:A:601:VAL:CB	2.41	0.48
1:B:236:ALA:HA	1:B:239:VAL:CG1	2.43	0.48
1:D:694:ILE:O	1:D:698:VAL:HG22	2.13	0.48
1:A:428:GLU:O	1:A:432:GLU:HG2	2.14	0.48
1:B:246:GLU:HG2	1:B:247:GLN:N	2.28	0.48
1:B:485:GLU:O	1:B:490:PRO:HD3	2.13	0.48
1:C:596:GLN:HA	1:C:638:ARG:CD	2.41	0.48
1:E:281:GLU:N	1:E:282:PRO:HA	2.27	0.48
1:F:720:MET:HB3	1:F:724:TYR:HB2	1.95	0.48
1:A:690:GLU:HB3	1:A:726:VAL:HG22	1.95	0.48
1:B:452:ALA:HA	1:B:455:ARG:CZ	2.44	0.48
1:C:289:GLU:O	1:C:291:LEU:N	2.34	0.48
1:C:326:ILE:HB	1:C:370:ILE:HD11	1.95	0.48

Continued on next page...

Continued from previous page...

Atom-1	Atom-2	Interatomic distance (Å)	Clash overlap (Å)
1:C:604:ASP:N	1:C:645:THR:OG1	2.43	0.48
1:E:289:GLU:O	1:E:291:LEU:N	2.32	0.48
1:F:438:GLY:O	1:F:441:LEU:HB2	2.13	0.48
1:B:307:ALA:HA	1:B:310:GLU:HG2	1.96	0.48
1:C:311:GLU:O	1:C:314:ARG:HG2	2.14	0.48
1:C:589:PHE:CE1	1:C:600:VAL:HG11	2.49	0.48
1:D:331:ASP:HA	1:D:379:ILE:HD11	1.96	0.48
1:E:627:LEU:HG	1:E:657:MET:HE1	1.96	0.48
1:E:705:ILE:HD12	1:E:713:LEU:HD12	1.96	0.48
1:F:281:GLU:N	1:F:282:PRO:HA	2.28	0.48
1:A:407:LEU:CD1	1:A:426:ILE:HG23	2.44	0.48
1:A:499:TYR:OH	1:A:565:ILE:HB	2.14	0.48
1:A:677:LEU:HG	1:A:695:ALA:CB	2.43	0.48
1:B:479:ASP:O	1:B:480:PHE:C	2.51	0.48
1:E:257:LEU:HG	1:E:371:GLY:O	2.14	0.48
1:E:562:PHE:CD1	1:E:597:LEU:HG	2.49	0.48
1:F:570:PRO:CG	1:F:604:ASP:HB2	2.41	0.48
1:E:286:ASN:OD1	1:E:327:PHE:HD1	1.97	0.48
1:E:352:ASN:HA	1:E:355:LEU:HD12	1.96	0.48
1:F:257:LEU:HG	1:F:371:GLY:O	2.14	0.48
1:A:241:PRO:HA	1:A:242:PRO:HA	1.39	0.47
1:A:517:VAL:HG13	1:A:665:ILE:HG21	1.96	0.47
1:A:543:GLY:O	1:A:647:SER:HA	2.14	0.47
1:B:230:ILE:HD11	1:B:391:VAL:HG11	1.96	0.47
1:B:670:ILE:HG21	1:B:675:GLN:HB2	1.96	0.47
1:E:508:ILE:HD13	1:E:683:LEU:HD21	1.95	0.47
1:F:629:LEU:O	1:F:632:LYS:HB3	2.14	0.47
1:A:398:PRO:HD2	1:A:434:LYS:O	2.14	0.47
1:A:540:LEU:HD12	1:A:644:GLY:O	2.14	0.47
1:B:428:GLU:O	1:B:431:VAL:HG12	2.14	0.47
1:B:438:GLY:O	1:B:441:LEU:N	2.42	0.47
1:C:538:SER:OG	1:C:662:SER:N	2.38	0.47
1:D:578:GLU:OE1	1:D:621:LEU:HD13	2.14	0.47
1:F:609:LEU:HD13	1:F:655:MET:CE	2.43	0.47
1:A:242:PRO:O	1:A:246:GLU:OE1	2.32	0.47
1:A:388:ARG:O	1:A:389:LEU:HD22	2.14	0.47
1:A:650:ASP:OD1	1:A:650:ASP:N	2.46	0.47
1:C:576:PHE:HB3	1:C:580:ALA:HB3	1.96	0.47
1:D:268:LEU:HA	1:D:271:ARG:HD2	1.96	0.47
1:D:593:TYR:OH	1:D:632:LYS:HD2	2.14	0.47
1:D:627:LEU:CD2	1:D:657:MET:HG3	2.45	0.47

Continued on next page...

Continued from previous page...

Atom-1	Atom-2	Interatomic distance (Å)	Clash overlap (Å)
1:D:670:ILE:HD11	1:D:705:ILE:CG2	2.44	0.47
1:E:428:GLU:O	1:E:431:VAL:HG12	2.14	0.47
1:F:327:PHE:CB	1:F:330:ILE:HG22	2.44	0.47
1:D:397:LEU:HD23	1:D:398:PRO:CD	2.42	0.47
1:E:440:GLU:O	1:E:444:LEU:HG	2.14	0.47
1:E:677:LEU:HD11	1:E:695:ALA:HA	1.95	0.47
1:F:510:TRP:CB	1:F:679:ALA:HB2	2.43	0.47
1:F:525:VAL:HG11	1:F:560:SER:CB	2.45	0.47
1:F:579:THR:O	1:F:583:GLN:HG2	2.14	0.47
1:F:710:LEU:O	1:F:714:ILE:HG13	2.14	0.47
1:A:237:SER:OG	1:A:252:HIS:HA	2.14	0.47
1:B:540:LEU:HD11	1:B:649:LYS:HZ2	1.79	0.47
1:C:513:PRO:HD3	1:C:675:GLN:HE22	1.80	0.47
1:C:609:LEU:O	1:C:610:ASP:HB2	2.13	0.47
1:C:666:HIS:CE1	1:C:668:PRO:HB3	2.49	0.47
1:D:310:GLU:O	1:D:313:GLN:CG	2.63	0.47
1:D:527:GLN:HE22	1:E:716:MET:N	2.13	0.47
1:B:241:PRO:HA	1:B:242:PRO:HA	1.58	0.47
1:B:503:ILE:HG22	1:B:506:GLY:H	1.79	0.47
1:B:540:LEU:O	1:B:540:LEU:HD12	2.15	0.47
1:C:536:LEU:CD1	1:C:640:LEU:HB3	2.44	0.47
1:C:721:ASP:O	1:C:725:ARG:HG3	2.13	0.47
1:D:303:ARG:HH11	1:D:357:LYS:CE	2.28	0.47
1:D:510:TRP:CE3	1:D:675:GLN:HG2	2.40	0.47
1:D:564:PHE:HB3	1:D:598:SER:HB3	1.97	0.47
1:D:652:LEU:HD13	1:D:657:MET:HB3	1.95	0.47
1:E:508:ILE:HG13	1:E:510:TRP:HB3	1.95	0.47
1:E:612:VAL:HG22	1:E:613:PRO:HD2	1.97	0.47
1:E:705:ILE:CD1	1:E:713:LEU:HD12	2.45	0.47
1:F:428:GLU:O	1:F:431:VAL:HG12	2.15	0.47
1:A:617:ARG:HG3	1:A:617:ARG:NH1	2.28	0.47
1:A:683:LEU:HD13	1:A:685:ASN:HD22	1.79	0.47
1:C:510:TRP:CD2	1:C:707:ILE:HD13	2.50	0.47
1:D:281:GLU:N	1:D:282:PRO:HA	2.30	0.47
1:E:289:GLU:C	1:E:291:LEU:H	2.17	0.47
1:E:311:GLU:O	1:E:314:ARG:HG2	2.15	0.47
1:E:531:SER:HB3	1:E:534:THR:O	2.14	0.47
1:F:548:GLY:HA3	1:F:707:ILE:HG22	1.95	0.47
1:B:272:GLN:OE1	1:B:272:GLN:HA	2.15	0.47
1:C:428:GLU:O	1:C:431:VAL:HG12	2.15	0.47
1:D:247:GLN:HA	1:E:417:HIS:CE1	2.50	0.47

Continued on next page...

Continued from previous page...

Atom-1	Atom-2	Interatomic distance (Å)	Clash overlap (Å)
1:D:257:LEU:HG	1:D:371:GLY:O	2.14	0.47
1:E:272:GLN:OE1	1:E:272:GLN:HA	2.15	0.47
1:E:526:GLN:HA	1:E:529:LYS:HG2	1.96	0.47
1:F:311:GLU:O	1:F:314:ARG:HG2	2.15	0.47
1:F:535:PRO:HB2	1:F:536:LEU:HD13	1.97	0.47
1:B:237:SER:HA	1:C:453:MET:HG3	1.97	0.47
1:B:402:GLY:O	1:B:406:ILE:HD12	2.15	0.47
1:B:523:LEU:HA	1:B:526:GLN:HG2	1.96	0.47
1:B:527:GLN:HA	1:C:719:GLN:CD	2.36	0.47
1:B:533:ARG:CG	1:B:534:THR:H	2.18	0.47
1:B:640:LEU:CD2	1:B:642:ILE:HG13	2.45	0.47
1:C:355:LEU:O	1:C:388:ARG:NH2	2.40	0.47
1:E:233:ARG:CG	1:F:454:ASN:HB2	2.45	0.47
1:E:549:LYS:O	1:E:552:LEU:HB2	2.15	0.47
1:B:710:LEU:O	1:B:714:ILE:HG13	2.15	0.47
1:C:490:PRO:HA	1:C:491:ALA:CB	2.29	0.47
1:C:550:THR:HB	2:C:801:ADP:O2A	2.15	0.47
1:C:582:CYS:SG	1:C:621:LEU:HG	2.55	0.47
1:D:536:LEU:HD21	1:D:630:LEU:O	2.15	0.47
1:D:654:GLU:HB3	1:E:614:ILE:HD11	1.96	0.47
1:D:688:ASP:O	1:D:692:THR:HG23	2.14	0.47
1:E:697:GLN:HG3	1:E:730:LEU:CD1	2.45	0.47
1:B:319:ASN:HB3	1:B:320:SER:HB2	1.97	0.46
1:B:503:ILE:HG12	1:B:551:ALA:HA	1.96	0.46
1:C:540:LEU:HD22	1:C:661:PHE:CD2	2.50	0.46
1:E:307:ALA:HA	1:E:310:GLU:HG2	1.96	0.46
1:E:540:LEU:HD12	1:E:541:LEU:N	2.30	0.46
1:A:222:GLY:N	1:A:405:GLN:HB3	2.31	0.46
1:A:263:GLY:CA	1:A:264:CYS:HB2	2.45	0.46
1:B:257:LEU:HG	1:B:371:GLY:O	2.15	0.46
1:B:513:PRO:CD	1:B:670:ILE:HD11	2.44	0.46
1:D:286:ASN:HB2	1:D:327:PHE:CD1	2.47	0.46
1:D:407:LEU:O	1:D:411:THR:HG23	2.14	0.46
1:F:307:ALA:HA	1:F:310:GLU:HG2	1.96	0.46
1:A:347:HIS:N	1:A:348:ASP:HA	2.31	0.46
1:B:263:GLY:C	1:B:437:SER:HB3	2.35	0.46
1:B:311:GLU:O	1:B:314:ARG:HG2	2.15	0.46
1:B:499:TYR:HA	1:B:502:TYR:CE2	2.49	0.46
1:B:542:GLU:CD	1:B:649:LYS:HD3	2.35	0.46
1:B:568:CYS:SG	1:B:588:ILE:HD12	2.56	0.46
1:B:614:ILE:O	1:B:616:PRO:HA	2.14	0.46

Continued on next page...

Continued from previous page...

Atom-1	Atom-2	Interatomic distance (Å)	Clash overlap (Å)
1:C:657:MET:HE3	1:C:661:PHE:CZ	2.50	0.46
1:C:670:ILE:HD13	1:C:675:GLN:CG	2.38	0.46
1:C:721:ASP:HB2	1:C:724:TYR:CD1	2.50	0.46
1:D:527:GLN:CD	1:E:716:MET:HA	2.36	0.46
1:D:528:THR:HG21	1:D:641:LEU:HB2	1.97	0.46
1:D:589:PHE:CD2	1:D:629:LEU:HD13	2.50	0.46
1:E:564:PHE:HB3	1:E:595:SER:HB2	1.97	0.46
1:F:557:ALA:HB2	1:F:601:VAL:HG21	1.98	0.46
1:B:438:GLY:O	1:B:441:LEU:HB2	2.15	0.46
1:B:512:ASP:N	1:B:513:PRO:CD	2.78	0.46
1:B:523:LEU:O	1:B:526:GLN:HG2	2.14	0.46
1:B:578:GLU:CG	1:B:619:SER:HB2	2.45	0.46
1:F:223:LEU:N	1:F:223:LEU:HD23	2.31	0.46
1:F:261:PRO:O	1:F:264:CYS:HB2	2.15	0.46
1:A:258:LEU:O	1:A:258:LEU:HD12	2.15	0.46
1:A:322:LEU:HD12	1:A:323:HIS:H	1.80	0.46
1:B:513:PRO:O	1:B:517:VAL:HG23	2.15	0.46
1:C:436:PHE:N	1:C:436:PHE:CD1	2.82	0.46
1:C:510:TRP:NE1	1:C:514:VAL:HG21	2.30	0.46
1:C:546:HIS:HA	1:C:708:LYS:HE2	1.98	0.46
1:C:612:VAL:CG2	1:C:613:PRO:HD2	2.46	0.46
1:C:717:SER:OG	1:C:725:ARG:O	2.30	0.46
1:D:609:LEU:O	1:D:610:ASP:OD1	2.34	0.46
1:E:683:LEU:HB3	1:E:685:ASN:OD1	2.16	0.46
1:E:713:LEU:HD23	1:E:713:LEU:HA	1.75	0.46
1:A:231:PHE:CE1	1:A:235:PHE:CE2	3.04	0.46
1:A:403:ARG:O	1:A:407:LEU:HG	2.15	0.46
1:B:222:GLY:N	1:B:402:GLY:HA3	2.31	0.46
1:B:576:PHE:HB2	1:B:581:LYS:CG	2.46	0.46
1:C:510:TRP:HA	1:C:679:ALA:HA	1.98	0.46
1:D:453:MET:O	1:D:457:ILE:HG13	2.16	0.46
1:D:510:TRP:CB	1:D:679:ALA:HB2	2.46	0.46
1:D:550:THR:HG23	2:D:801:ADP:PA	2.56	0.46
1:E:397:LEU:HG	1:E:398:PRO:HD2	1.96	0.46
1:E:451:THR:HB	1:E:481:LEU:CB	2.45	0.46
1:F:230:ILE:HD11	1:F:391:VAL:HG11	1.97	0.46
1:F:268:LEU:HA	1:F:271:ARG:HG2	1.98	0.46
1:F:571:ASP:HA	1:F:574:ILE:HB	1.97	0.46
1:F:653:GLN:HA	1:F:658:LEU:HB3	1.97	0.46
1:C:380:ASP:OD1	1:C:382:ALA:N	2.44	0.46
1:C:539:VAL:HG23	1:C:663:THR:HG23	1.96	0.46

Continued on next page...

Continued from previous page...

Atom-1	Atom-2	Interatomic distance (Å)	Clash overlap (Å)
1:E:261:PRO:HG2	1:E:264:CYS:HB2	1.96	0.46
1:E:593:TYR:CD2	1:E:635:PRO:HD3	2.50	0.46
1:B:325:ILE:HG13	1:B:369:VAL:HB	1.98	0.46
1:C:233:ARG:HB2	1:C:233:ARG:CZ	2.45	0.46
1:C:674:GLU:O	1:C:677:LEU:HB2	2.16	0.46
1:E:261:PRO:HB3	1:E:594:LYS:CE	2.46	0.46
1:E:490:PRO:HA	1:E:491:ALA:CB	2.34	0.46
1:E:527:GLN:HA	1:F:719:GLN:HG3	1.96	0.46
1:A:628:VAL:CG1	1:B:571:ASP:HA	2.45	0.46
1:F:261:PRO:HD2	1:F:264:CYS:SG	2.56	0.46
1:D:627:LEU:HD23	1:D:627:LEU:HA	1.68	0.46
1:D:635:PRO:O	1:D:638:ARG:HB2	2.15	0.46
1:D:636:GLN:NE2	1:E:504:MET:SD	2.82	0.46
1:E:327:PHE:CE2	1:E:369:VAL:HG21	2.50	0.46
1:F:694:ILE:O	1:F:698:VAL:HG22	2.17	0.46
1:A:624:GLN:OE1	1:A:624:GLN:HA	2.16	0.45
1:A:709:LYS:HE2	1:A:709:LYS:HA	1.97	0.45
1:B:436:PHE:N	1:B:436:PHE:CD1	2.83	0.45
1:B:440:GLU:O	1:B:444:LEU:HG	2.16	0.45
1:E:648:ARG:NE	1:E:651:VAL:HG13	2.32	0.45
1:F:589:PHE:CD2	1:F:629:LEU:HD22	2.50	0.45
1:A:510:TRP:O	1:A:678:GLU:HB3	2.17	0.45
1:A:627:LEU:O	1:A:631:LYS:NZ	2.49	0.45
1:B:507:ILE:HG13	1:B:555:LYS:HD3	1.97	0.45
1:B:707:ILE:O	1:B:711:LEU:HG	2.15	0.45
1:D:686:PHE:HB2	1:D:691:ARG:CG	2.46	0.45
1:E:218:MET:HA	1:E:219:GLY:HA2	1.74	0.45
1:E:319:ASN:HB3	1:E:320:SER:HB2	1.97	0.45
1:F:712:MET:O	1:F:716:MET:HG3	2.15	0.45
1:A:620:ASN:ND2	1:B:610:ASP:OD1	2.49	0.45
1:B:527:GLN:CB	1:C:719:GLN:HG3	2.45	0.45
1:E:508:ILE:HD11	1:E:707:ILE:CD1	2.46	0.45
1:E:611:TYR:CE1	1:E:616:PRO:HB2	2.51	0.45
1:F:502:TYR:CD2	1:F:503:ILE:HG13	2.51	0.45
1:A:261:PRO:CG	1:A:397:LEU:H	2.30	0.45
1:A:721:ASP:O	1:A:725:ARG:HG3	2.16	0.45
1:D:247:GLN:HA	1:E:417:HIS:ND1	2.31	0.45
1:D:318:ALA:O	1:D:319:ASN:ND2	2.49	0.45
1:D:399:ASP:HB3	1:D:401:LYS:HG2	1.98	0.45
1:D:564:PHE:HD2	1:D:598:SER:HB2	1.81	0.45
1:E:586:LYS:NZ	1:F:575:GLY:HA3	2.32	0.45

Continued on next page...

Continued from previous page...

Atom-1	Atom-2	Interatomic distance (Å)	Clash overlap (Å)
1:F:307:ALA:O	1:F:310:GLU:HG2	2.17	0.45
1:F:510:TRP:HB3	1:F:679:ALA:CB	2.43	0.45
1:C:352:ASN:ND2	1:D:289:GLU:H	2.14	0.45
1:D:327:PHE:HB2	1:D:330:ILE:CG2	2.47	0.45
1:F:241:PRO:HA	1:F:242:PRO:HA	1.63	0.45
1:F:686:PHE:CE1	1:F:714:ILE:HG23	2.50	0.45
1:B:307:ALA:O	1:B:310:GLU:HG2	2.16	0.45
1:C:247:GLN:HA	1:D:417:HIS:NE2	2.31	0.45
1:C:562:PHE:O	1:C:565:ILE:HD11	2.17	0.45
1:E:325:ILE:HG13	1:E:369:VAL:HB	1.97	0.45
1:E:627:LEU:HG	1:E:657:MET:CE	2.46	0.45
1:F:319:ASN:HB3	1:F:320:SER:HB2	1.97	0.45
1:F:510:TRP:CE2	1:F:670:ILE:HG12	2.52	0.45
1:F:670:ILE:O	1:F:704:TRP:HA	2.16	0.45
1:A:315:ARG:O	1:A:316:LEU:HD12	2.17	0.45
1:A:612:VAL:HG12	1:A:617:ARG:HB2	1.99	0.45
1:C:320:SER:O	1:C:320:SER:OG	2.31	0.45
1:F:612:VAL:HG13	1:F:614:ILE:O	2.17	0.45
1:A:713:LEU:CD2	1:A:732:LEU:HB3	2.42	0.45
1:B:539:VAL:HA	1:B:663:THR:O	2.16	0.45
1:C:236:ALA:HB1	1:D:453:MET:CB	2.47	0.45
1:C:550:THR:H	2:C:801:ADP:PB	2.40	0.45
1:C:593:TYR:CE2	1:C:632:LYS:NZ	2.84	0.45
1:F:632:LYS:HD2	1:F:633:ALA:H	1.81	0.45
1:A:220:ILE:HG22	1:A:221:GLY:N	2.32	0.45
1:D:303:ARG:HH11	1:D:357:LYS:HE3	1.82	0.45
1:D:542:GLU:OE2	1:D:649:LYS:HD2	2.17	0.45
1:E:538:SER:OG	1:E:662:SER:N	2.47	0.45
1:E:732:LEU:HD23	1:E:732:LEU:HA	1.71	0.45
1:A:508:ILE:CD1	1:A:683:LEU:HG	2.47	0.45
1:B:503:ILE:HD11	1:B:554:ALA:HB3	1.99	0.45
1:B:519:ASP:O	1:B:523:LEU:HG	2.17	0.45
1:B:545:PRO:O	1:B:546:HIS:HB2	2.17	0.45
1:D:218:MET:HA	1:D:219:GLY:HA2	1.77	0.45
1:D:550:THR:HG23	2:D:801:ADP:O2A	2.16	0.45
1:E:713:LEU:CD2	1:E:732:LEU:HD13	2.47	0.45
1:E:714:ILE:HG12	1:E:729:PHE:HE1	1.82	0.45
1:E:726:VAL:O	1:E:730:LEU:HG	2.17	0.45
1:F:297:GLU:O	1:F:300:ALA:HB3	2.17	0.45
1:A:646:THR:HG21	1:A:652:LEU:HD22	1.99	0.44
1:D:424:VAL:CG2	1:D:480:PHE:HA	2.46	0.44

Continued on next page...

Continued from previous page...

Atom-1	Atom-2	Interatomic distance (Å)	Clash overlap (Å)
1:D:564:PHE:HB3	1:D:598:SER:CB	2.46	0.44
1:E:230:ILE:HD11	1:E:391:VAL:HG11	1.98	0.44
1:E:236:ALA:CA	1:E:239:VAL:HG12	2.44	0.44
1:E:297:GLU:O	1:E:300:ALA:HB3	2.17	0.44
1:E:436:PHE:CD1	1:E:436:PHE:N	2.85	0.44
1:E:512:ASP:N	1:E:513:PRO:CD	2.79	0.44
1:F:441:LEU:O	1:F:445:VAL:HG23	2.16	0.44
1:D:231:PHE:HA	1:D:235:PHE:CD2	2.53	0.44
1:D:312:GLU:HG3	1:D:313:GLN:N	2.32	0.44
1:F:325:ILE:HG13	1:F:369:VAL:HB	1.98	0.44
1:F:549:LYS:HE3	1:F:646:THR:C	2.38	0.44
1:C:555:LYS:O	1:C:559:GLU:HG2	2.18	0.44
1:E:246:GLU:HG2	1:E:247:GLN:N	2.33	0.44
1:E:307:ALA:O	1:E:310:GLU:HG2	2.16	0.44
1:E:573:MET:O	1:E:576:PHE:HB2	2.16	0.44
1:F:289:GLU:O	1:F:291:LEU:N	2.35	0.44
1:B:436:PHE:HB3	1:B:440:GLU:HB2	1.99	0.44
1:C:355:LEU:HA	1:C:388:ARG:NE	2.31	0.44
1:D:626:LEU:O	1:D:630:LEU:HG	2.18	0.44
1:E:506:GLY:O	1:E:508:ILE:N	2.49	0.44
1:F:525:VAL:HG11	1:F:560:SER:HB2	1.99	0.44
1:F:602:VAL:O	1:F:644:GLY:HA2	2.17	0.44
1:A:220:ILE:HD11	1:A:227:PHE:CZ	2.53	0.44
1:A:236:ALA:CB	1:B:453:MET:HB2	2.43	0.44
1:A:355:LEU:HD22	1:A:388:ARG:NH1	2.32	0.44
1:B:297:GLU:O	1:B:300:ALA:HB3	2.17	0.44
1:D:300:ALA:O	1:D:303:ARG:HB3	2.18	0.44
1:D:573:MET:SD	1:D:608:LEU:HD22	2.58	0.44
1:E:721:ASP:HB2	1:E:724:TYR:CD2	2.52	0.44
1:F:240:PHE:HA	1:F:241:PRO:HD3	1.82	0.44
1:F:546:HIS:CE1	1:F:709:LYS:HB2	2.51	0.44
1:B:284:VAL:O	1:B:326:ILE:HG12	2.18	0.44
1:C:546:HIS:O	1:C:708:LYS:HG2	2.17	0.44
1:D:655:MET:O	1:D:656:GLU:HB2	2.18	0.44
1:B:240:PHE:HA	1:B:241:PRO:HD3	1.88	0.44
1:B:536:LEU:HD12	1:B:640:LEU:O	2.18	0.44
1:D:361:VAL:CB	1:E:285:VAL:HG21	2.48	0.44
1:E:586:LYS:NZ	1:F:574:ILE:HG23	2.32	0.44
1:E:696:GLN:HA	1:E:696:GLN:OE1	2.18	0.44
1:B:503:ILE:HD11	1:B:551:ALA:O	2.17	0.44
1:D:510:TRP:HB3	1:D:679:ALA:HB2	1.99	0.44

Continued on next page...

Continued from previous page...

Atom-1	Atom-2	Interatomic distance (Å)	Clash overlap (Å)
1:D:546:HIS:HB3	1:D:708:LYS:CB	2.47	0.44
1:F:223:LEU:HD22	1:F:395:ILE:HG23	1.99	0.44
1:F:272:GLN:HA	1:F:272:GLN:OE1	2.16	0.44
1:F:443:GLY:O	1:F:446:ARG:HB3	2.18	0.44
1:F:593:TYR:O	1:F:638:ARG:CD	2.66	0.44
1:A:508:ILE:HD11	1:A:683:LEU:HG	2.00	0.44
1:A:526:GLN:NE2	1:A:530:ASN:HD22	2.13	0.44
1:B:289:GLU:C	1:B:291:LEU:H	2.16	0.44
1:B:531:SER:HA	1:B:639:LYS:HD3	1.99	0.44
1:C:514:VAL:HG11	2:C:801:ADP:N6	2.33	0.44
1:C:726:VAL:H	1:C:726:VAL:HG23	1.62	0.44
1:B:221:GLY:HA3	1:B:406:ILE:HD12	2.00	0.43
1:B:510:TRP:CE2	1:B:514:VAL:CG2	3.01	0.43
1:B:533:ARG:HH21	1:C:685:ASN:HD21	1.65	0.43
1:E:250:CYS:SG	1:F:446:ARG:HA	2.58	0.43
1:F:436:PHE:HB3	1:F:440:GLU:HB2	1.98	0.43
1:A:397:LEU:CD1	1:A:435:ASN:HA	2.43	0.43
1:A:564:PHE:CZ	1:A:566:LYS:HB2	2.53	0.43
1:B:375:ARG:NH2	1:B:377:ASP:OD2	2.50	0.43
1:B:507:ILE:CG1	1:B:555:LYS:HD3	2.48	0.43
1:B:548:GLY:HA2	2:B:801:ADP:O1A	2.18	0.43
1:C:220:ILE:HD11	1:C:272:GLN:HG3	1.99	0.43
1:C:519:ASP:O	1:C:523:LEU:HG	2.18	0.43
1:E:242:PRO:HD2	1:E:243:GLU:N	2.33	0.43
1:F:352:ASN:HA	1:F:355:LEU:HD12	1.99	0.43
1:F:536:LEU:HD11	1:F:633:ALA:HA	2.00	0.43
1:A:300:ALA:O	1:A:303:ARG:HG2	2.17	0.43
1:A:402:GLY:O	1:A:406:ILE:HD12	2.18	0.43
1:A:611:TYR:HA	1:A:617:ARG:O	2.19	0.43
1:B:533:ARG:HD2	1:C:711:LEU:CD1	2.48	0.43
1:B:542:GLU:OE1	1:B:649:LYS:HD3	2.18	0.43
1:B:612:VAL:HG13	1:B:614:ILE:O	2.17	0.43
1:C:218:MET:HA	1:C:219:GLY:HA2	1.75	0.43
1:D:690:GLU:O	1:D:694:ILE:HG13	2.18	0.43
1:E:248:MET:HA	1:F:449:GLN:OE1	2.18	0.43
1:B:499:TYR:HA	1:B:502:TYR:CD2	2.53	0.43
1:C:265:GLY:O	1:C:268:LEU:HG	2.18	0.43
1:C:676:LEU:O	1:C:679:ALA:HB3	2.18	0.43
1:F:589:PHE:O	1:F:593:TYR:CD1	2.71	0.43
1:A:357:LYS:HE3	1:A:357:LYS:HA	2.00	0.43
1:A:410:HIS:NE2	1:A:442:GLU:HG2	2.33	0.43

Continued on next page...

Continued from previous page...

Atom-1	Atom-2	Interatomic distance (Å)	Clash overlap (Å)
1:A:593:TYR:HB3	1:A:635:PRO:HD3	2.00	0.43
1:B:539:VAL:CG2	1:B:665:ILE:HD12	2.47	0.43
1:C:510:TRP:CG	1:C:707:ILE:HD13	2.53	0.43
1:C:540:LEU:HD22	1:C:661:PHE:CE2	2.53	0.43
1:F:657:MET:SD	1:F:661:PHE:CE2	3.11	0.43
1:A:322:LEU:HD13	1:A:366:ASN:O	2.18	0.43
1:B:254:LYS:O	1:B:368:LEU:HA	2.18	0.43
1:B:490:PRO:HA	1:B:491:ALA:CB	2.34	0.43
1:B:541:LEU:HA	1:B:665:ILE:O	2.19	0.43
1:C:319:ASN:HA	1:C:320:SER:HA	1.88	0.43
1:C:547:SER:O	1:C:707:ILE:HG22	2.19	0.43
1:D:240:PHE:HA	1:D:241:PRO:HD3	1.79	0.43
1:E:221:GLY:HA3	1:E:406:ILE:CD1	2.49	0.43
1:E:375:ARG:NH2	1:E:377:ASP:OD2	2.51	0.43
1:A:573:MET:HA	1:A:576:PHE:CD2	2.54	0.43
1:B:510:TRP:CE2	1:B:514:VAL:HG22	2.53	0.43
1:B:670:ILE:HG22	1:B:672:THR:N	2.30	0.43
1:D:538:SER:OG	1:D:661:PHE:HA	2.18	0.43
1:E:406:ILE:HB	1:E:441:LEU:HD13	2.00	0.43
1:A:632:LYS:HE3	1:A:633:ALA:O	2.19	0.43
1:C:526:GLN:OE1	1:C:530:ASN:ND2	2.51	0.43
1:C:677:LEU:O	1:C:681:GLU:OE1	2.35	0.43
1:D:227:PHE:O	1:D:230:ILE:HG22	2.19	0.43
1:F:265:GLY:HA3	1:F:437:SER:HB2	1.99	0.43
1:A:299:GLU:OE1	1:A:303:ARG:NH2	2.48	0.43
1:A:659:ASN:HD21	1:B:545:PRO:HB2	1.84	0.43
1:A:676:LEU:O	1:A:679:ALA:HB3	2.19	0.43
1:B:609:LEU:HD23	1:B:609:LEU:HA	1.67	0.43
1:C:521:GLY:O	1:C:525:VAL:HG23	2.18	0.43
1:C:596:GLN:O	1:C:638:ARG:HA	2.19	0.43
1:E:352:ASN:CB	1:F:288:PRO:HG2	2.49	0.43
1:E:658:LEU:HD12	1:E:658:LEU:HA	1.61	0.43
1:F:257:LEU:HB2	1:F:389:LEU:HD13	2.00	0.43
1:F:320:SER:O	1:F:320:SER:OG	2.36	0.43
1:F:510:TRP:HB3	1:F:679:ALA:CA	2.49	0.43
1:C:576:PHE:HB2	1:C:581:LYS:HE3	2.00	0.43
1:C:635:PRO:HB2	1:C:638:ARG:NH1	2.33	0.43
1:D:303:ARG:HG3	1:D:357:LYS:HG3	2.00	0.43
1:E:549:LYS:HE2	1:E:645:THR:HB	2.00	0.43
1:F:677:LEU:HD21	1:F:695:ALA:HA	2.01	0.43
1:A:313:GLN:NE2	1:A:365:ASN:OD1	2.52	0.42

Continued on next page...

Continued from previous page...

Atom-1	Atom-2	Interatomic distance (Å)	Clash overlap (Å)
1:A:315:ARG:HG2	1:A:316:LEU:HD12	2.00	0.42
1:B:232:ARG:O	1:B:236:ALA:HB3	2.19	0.42
1:B:536:LEU:HD22	1:B:632:LYS:O	2.19	0.42
1:E:676:LEU:HD22	1:E:703:VAL:HG11	2.01	0.42
1:F:270:ALA:HA	1:F:273:ILE:HG22	1.99	0.42
1:F:397:LEU:CB	1:F:398:PRO:HD3	2.49	0.42
1:A:227:PHE:CE2	1:A:231:PHE:CD1	3.07	0.42
1:B:406:ILE:O	1:B:409:ILE:HG22	2.20	0.42
1:C:324:ILE:HD12	1:C:324:ILE:N	2.34	0.42
1:C:554:ALA:O	1:C:558:GLU:OE1	2.37	0.42
1:C:656:GLU:OE1	1:D:613:PRO:HD3	2.19	0.42
1:D:377:ASP:OD1	1:D:378:LEU:N	2.52	0.42
1:E:253:VAL:HA	1:F:446:ARG:HH21	1.83	0.42
1:E:377:ASP:OD1	1:E:378:LEU:N	2.53	0.42
1:E:388:ARG:O	1:E:389:LEU:HD23	2.20	0.42
1:F:254:LYS:O	1:F:368:LEU:HA	2.18	0.42
1:F:395:ILE:HD12	1:F:395:ILE:N	2.34	0.42
1:A:242:PRO:HD2	1:A:243:GLU:OE1	2.19	0.42
1:A:380:ASP:OD1	1:A:381:GLU:N	2.52	0.42
1:A:713:LEU:HA	1:A:713:LEU:HD23	1.69	0.42
1:B:257:LEU:HB2	1:B:389:LEU:HD13	2.01	0.42
1:B:377:ASP:OD1	1:B:378:LEU:N	2.53	0.42
1:B:526:GLN:NE2	1:C:719:GLN:HB3	2.33	0.42
1:B:541:LEU:HD13	1:B:667:VAL:HG21	2.01	0.42
1:E:605:ILE:HA	1:E:608:LEU:HB3	2.01	0.42
1:A:708:LYS:O	1:A:711:LEU:HB2	2.19	0.42
1:B:543:GLY:O	1:B:549:LYS:NZ	2.50	0.42
1:B:579:THR:O	1:B:583:GLN:HG2	2.20	0.42
1:B:677:LEU:O	1:B:681:GLU:HG3	2.19	0.42
1:D:407:LEU:HA	1:D:441:LEU:HD21	2.01	0.42
1:D:539:VAL:HG23	1:D:663:THR:HG23	2.01	0.42
1:B:242:PRO:CD	1:B:243:GLU:H	2.32	0.42
1:B:520:ASP:OD2	1:B:665:ILE:HG12	2.20	0.42
1:B:531:SER:CB	1:B:639:LYS:HD3	2.49	0.42
1:B:548:GLY:CA	2:B:801:ADP:H2	2.31	0.42
1:B:620:ASN:ND2	1:B:624:GLN:HE21	2.16	0.42
1:B:621:LEU:HD21	1:C:575:GLY:HA2	2.01	0.42
1:C:445:VAL:O	1:C:449:GLN:OE1	2.38	0.42
1:C:499:TYR:OH	1:C:565:ILE:HB	2.20	0.42
1:C:528:THR:O	1:C:639:LYS:HD3	2.19	0.42
1:C:682:LEU:N	1:C:682:LEU:HD23	2.34	0.42

Continued on next page...

Continued from previous page...

Atom-1	Atom-2	Interatomic distance (Å)	Clash overlap (Å)
1:C:688:ASP:HA	1:C:691:ARG:CZ	2.49	0.42
1:F:388:ARG:O	1:F:389:LEU:HD23	2.19	0.42
1:F:401:LYS:O	1:F:404:LEU:HB3	2.19	0.42
1:F:597:LEU:HA	1:F:639:LYS:O	2.19	0.42
1:A:219:GLY:O	1:A:220:ILE:HG13	2.20	0.42
1:A:609:LEU:HD23	1:A:609:LEU:HA	1.89	0.42
1:A:624:GLN:HG3	1:B:610:ASP:CG	2.37	0.42
1:A:706:GLY:O	1:A:709:LYS:HB3	2.20	0.42
1:B:593:TYR:OH	1:B:632:LYS:HG2	2.19	0.42
1:C:386:PRO:HG2	1:D:440:GLU:OE1	2.20	0.42
1:D:331:ASP:CA	1:D:379:ILE:HD11	2.50	0.42
1:E:607:ARG:HA	1:E:607:ARG:HD3	1.88	0.42
1:E:632:LYS:HB3	1:E:632:LYS:HE3	1.87	0.42
1:E:691:ARG:HA	1:E:694:ILE:HD12	2.02	0.42
1:F:721:ASP:O	1:F:725:ARG:HG3	2.19	0.42
1:B:347:HIS:O	1:B:350:VAL:HG22	2.20	0.42
1:C:349:THR:O	1:C:352:ASN:HB3	2.20	0.42
1:C:498:ASP:O	1:C:500:ALA:N	2.53	0.42
1:C:560:SER:HB2	1:C:562:PHE:CZ	2.55	0.42
1:C:604:ASP:HB3	1:C:607:ARG:HB3	2.02	0.42
1:D:304:LYS:HA	1:D:307:ALA:HB3	2.02	0.42
1:D:608:LEU:O	1:D:622:VAL:HG11	2.20	0.42
1:D:626:LEU:HD23	1:D:626:LEU:HA	1.72	0.42
1:E:612:VAL:CG2	1:E:613:PRO:HD2	2.49	0.42
1:F:609:LEU:HD13	1:F:655:MET:HE2	2.01	0.42
1:A:377:ASP:OD2	1:A:378:LEU:HD23	2.20	0.42
1:B:395:ILE:HD12	1:B:395:ILE:N	2.34	0.42
1:B:569:SER:OG	1:B:571:ASP:OD2	2.34	0.42
1:C:707:ILE:O	1:C:711:LEU:HG	2.19	0.42
1:D:236:ALA:HA	1:D:239:VAL:HG12	2.01	0.42
1:E:236:ALA:O	1:E:239:VAL:HG12	2.20	0.42
1:E:242:PRO:CD	1:E:243:GLU:H	2.31	0.42
1:F:221:GLY:N	1:F:406:ILE:HD13	2.35	0.42
1:B:324:ILE:HG12	1:B:368:LEU:HD11	2.01	0.42
1:B:388:ARG:O	1:B:389:LEU:HD23	2.20	0.42
1:B:502:TYR:CE2	1:B:567:ILE:HD13	2.54	0.42
1:C:603:ASP:HA	1:C:645:THR:OG1	2.20	0.42
1:D:388:ARG:O	1:D:389:LEU:HD23	2.20	0.42
1:E:547:SER:OG	1:E:549:LYS:HG2	2.19	0.42
1:F:232:ARG:O	1:F:236:ALA:HB3	2.20	0.42
1:F:284:VAL:O	1:F:326:ILE:HG12	2.19	0.42

Continued on next page...

Continued from previous page...

Atom-1	Atom-2	Interatomic distance (Å)	Clash overlap (Å)
1:F:589:PHE:CD2	1:F:629:LEU:HD13	2.43	0.42
1:F:653:GLN:CB	1:F:658:LEU:HD23	2.50	0.42
1:A:256:ILE:CG1	1:A:370:ILE:HG22	2.47	0.42
1:A:627:LEU:HD23	1:A:627:LEU:HA	1.94	0.42
1:B:323:HIS:HB2	1:B:367:ILE:HG22	2.02	0.42
1:B:398:PRO:HG2	1:B:434:LYS:O	2.19	0.42
1:B:712:MET:O	1:B:716:MET:HG3	2.19	0.42
1:E:319:ASN:HA	1:E:320:SER:HA	1.90	0.42
1:E:530:ASN:O	1:E:639:LYS:HE3	2.19	0.42
1:E:536:LEU:HD22	1:E:634:PRO:HD3	2.02	0.42
1:A:315:ARG:C	1:A:316:LEU:HD12	2.40	0.41
1:A:534:THR:HG23	1:B:715:GLU:HG3	2.01	0.41
1:E:260:GLY:HA3	1:E:266:LYS:HD3	2.01	0.41
1:E:270:ALA:HA	1:E:273:ILE:HG22	2.02	0.41
1:E:547:SER:N	2:E:801:ADP:O2B	2.53	0.41
1:A:254:LYS:O	1:A:368:LEU:HA	2.20	0.41
1:A:285:VAL:HG13	1:A:326:ILE:CD1	2.43	0.41
1:A:566:LYS:HD3	1:A:566:LYS:HA	1.79	0.41
1:A:718:LEU:O	1:A:725:ARG:NE	2.54	0.41
1:C:284:VAL:HB	1:C:325:ILE:HA	2.01	0.41
1:C:510:TRP:HB2	1:C:679:ALA:HB2	2.03	0.41
1:C:653:GLN:HA	1:C:658:LEU:HB3	2.02	0.41
1:D:560:SER:HB2	1:D:562:PHE:CE1	2.55	0.41
1:E:406:ILE:O	1:E:409:ILE:HG22	2.20	0.41
1:E:510:TRP:HA	1:E:679:ALA:HA	2.01	0.41
1:E:593:TYR:CE1	1:E:632:LYS:NZ	2.88	0.41
1:F:324:ILE:HG12	1:F:368:LEU:HD11	2.01	0.41
1:F:451:THR:O	1:F:454:ASN:HB3	2.20	0.41
1:A:396:GLY:O	1:A:397:LEU:HB2	2.20	0.41
1:A:499:TYR:CE2	1:A:565:ILE:HB	2.55	0.41
1:B:268:LEU:HD12	1:B:269:LEU:N	2.35	0.41
1:C:318:ALA:C	1:C:319:ASN:HD22	2.21	0.41
1:D:620:ASN:OD1	1:E:617:ARG:NH1	2.53	0.41
1:D:659:ASN:HD21	1:E:545:PRO:HB3	1.85	0.41
1:D:710:LEU:HG	1:D:714:ILE:HD11	2.02	0.41
1:E:540:LEU:HD12	1:E:541:LEU:H	1.84	0.41
1:F:542:GLU:OE1	1:F:666:HIS:HB2	2.19	0.41
1:F:658:LEU:O	1:F:658:LEU:HD12	2.21	0.41
1:A:498:ASP:OD2	1:A:567:ILE:HD13	2.21	0.41
1:B:715:GLU:O	1:B:719:GLN:HG2	2.21	0.41
1:C:638:ARG:HG3	1:C:638:ARG:HH11	1.85	0.41

Continued on next page...

Continued from previous page...

Atom-1	Atom-2	Interatomic distance (Å)	Clash overlap (Å)
1:C:690:GLU:HB2	1:C:726:VAL:CG2	2.44	0.41
1:D:223:LEU:O	1:D:223:LEU:HD23	2.20	0.41
1:D:397:LEU:HD12	1:D:594:LYS:O	2.20	0.41
1:D:544:PRO:O	1:D:547:SER:HB3	2.21	0.41
1:E:324:ILE:HG12	1:E:368:LEU:HD11	2.01	0.41
1:E:682:LEU:HD23	1:E:682:LEU:HA	1.72	0.41
1:F:609:LEU:HD23	1:F:609:LEU:HA	1.86	0.41
1:A:407:LEU:O	1:A:411:THR:HG23	2.21	0.41
1:A:411:THR:CG2	1:A:426:ILE:HD11	2.50	0.41
1:C:331:ASP:CA	1:C:379:ILE:HD11	2.47	0.41
1:C:507:ILE:HG23	2:C:801:ADP:C6	2.56	0.41
1:C:687:LYS:HB2	1:C:690:GLU:OE1	2.21	0.41
1:D:231:PHE:O	1:D:235:PHE:HB2	2.20	0.41
1:E:440:GLU:OE2	1:E:492:PHE:HA	2.20	0.41
1:E:587:LYS:HZ1	1:E:591:ASP:CG	2.24	0.41
1:E:669:ASN:ND2	1:E:706:GLY:N	2.69	0.41
1:E:676:LEU:O	1:E:680:LEU:HG	2.21	0.41
1:E:705:ILE:CG1	1:E:709:LYS:HG3	2.49	0.41
1:F:560:SER:HB2	1:F:562:PHE:CD1	2.54	0.41
1:A:236:ALA:HA	1:B:453:MET:HB3	2.03	0.41
1:A:560:SER:O	1:A:561:ASN:OD1	2.39	0.41
1:D:312:GLU:CD	1:D:323:HIS:ND1	2.74	0.41
1:E:257:LEU:HB2	1:E:389:LEU:HD13	2.02	0.41
1:F:502:TYR:HD2	1:F:503:ILE:HG13	1.85	0.41
1:F:508:ILE:CD1	1:F:510:TRP:CD1	3.02	0.41
1:F:525:VAL:CG1	1:F:560:SER:HB2	2.51	0.41
1:A:233:ARG:O	1:A:236:ALA:HB3	2.20	0.41
1:A:549:LYS:HG3	1:A:550:THR:N	2.35	0.41
1:A:683:LEU:HD13	1:A:685:ASN:ND2	2.36	0.41
1:B:621:LEU:HD11	1:C:575:GLY:H	1.86	0.41
1:B:648:ARG:HG3	1:B:651:VAL:CG2	2.51	0.41
1:C:498:ASP:O	1:C:501:SER:N	2.45	0.41
1:C:595:SER:O	1:C:638:ARG:HD2	2.20	0.41
1:C:691:ARG:NH1	1:C:691:ARG:HB2	2.35	0.41
1:F:323:HIS:HB2	1:F:367:ILE:HG22	2.02	0.41
1:F:377:ASP:OD1	1:F:378:LEU:N	2.53	0.41
1:B:218:MET:HA	1:B:219:GLY:HA2	1.70	0.41
1:E:564:PHE:CB	1:E:595:SER:HB2	2.50	0.41
1:F:512:ASP:N	1:F:513:PRO:CD	2.84	0.41
1:A:219:GLY:O	1:A:272:GLN:HG2	2.21	0.41
1:A:262:PRO:CG	1:A:374:ASN:OD1	2.69	0.41

Continued on next page...

Continued from previous page...

Atom-1	Atom-2	Interatomic distance (Å)	Clash overlap (Å)
1:A:538:SER:O	1:A:662:SER:HB2	2.20	0.41
1:A:636:GLN:HA	1:A:637:GLY:HA2	1.49	0.41
1:A:693:THR:O	1:A:697:GLN:OE1	2.38	0.41
1:B:488:ILE:O	1:B:490:PRO:N	2.54	0.41
1:C:263:GLY:C	1:C:437:SER:HB3	2.41	0.41
1:D:331:ASP:O	1:D:332:ALA:HB3	2.20	0.41
1:D:529:LYS:HD3	1:D:597:LEU:CD2	2.51	0.41
1:D:569:SER:HA	1:D:570:PRO:HD3	1.90	0.41
1:E:620:ASN:O	1:E:624:GLN:HG2	2.21	0.41
1:E:655:MET:C	1:E:656:GLU:HG3	2.41	0.41
1:F:671:ALA:HA	1:F:703:VAL:O	2.21	0.41
1:A:239:VAL:O	1:A:240:PHE:C	2.57	0.41
1:A:284:VAL:O	1:A:326:ILE:HG13	2.21	0.41
1:A:564:PHE:HE1	1:A:566:LYS:HB2	1.83	0.41
1:A:676:LEU:HD23	1:A:698:VAL:HG11	2.03	0.41
1:B:242:PRO:HD2	1:B:243:GLU:N	2.34	0.41
1:D:309:ALA:HA	1:D:312:GLU:OE2	2.20	0.41
1:E:258:LEU:HB3	1:E:395:ILE:HD11	2.02	0.41
1:E:284:VAL:O	1:E:326:ILE:HG12	2.20	0.41
1:E:513:PRO:HA	1:E:516:ARG:CG	2.46	0.41
1:E:569:SER:HA	1:E:570:PRO:HD3	1.95	0.41
1:E:673:GLY:O	1:E:676:LEU:HB3	2.20	0.41
1:F:289:GLU:C	1:F:291:LEU:H	2.21	0.41
1:F:525:VAL:HG11	1:F:560:SER:HA	2.03	0.41
1:A:375:ARG:HA	1:A:376:PRO:HD2	1.97	0.40
1:B:516:ARG:O	1:B:520:ASP:HB2	2.22	0.40
1:C:242:PRO:HD2	1:C:243:GLU:N	2.36	0.40
1:C:411:THR:O	1:C:414:MET:HB2	2.20	0.40
1:C:626:LEU:HD23	1:C:626:LEU:HA	1.85	0.40
1:C:627:LEU:O	1:C:631:LYS:HG3	2.21	0.40
1:D:331:ASP:HA	1:D:379:ILE:CD1	2.51	0.40
1:E:323:HIS:HB2	1:E:367:ILE:HG22	2.02	0.40
1:A:215:PHE:N	1:A:231:PHE:CZ	2.89	0.40
1:A:259:TYR:HB2	1:A:373:THR:O	2.21	0.40
1:B:549:LYS:HB2	2:B:801:ADP:O1B	2.20	0.40
1:C:633:ALA:HA	1:C:634:PRO:HD3	1.90	0.40
1:E:532:ASP:OD2	1:E:533:ARG:HG2	2.20	0.40
1:E:721:ASP:HB2	1:E:724:TYR:HD2	1.87	0.40
1:F:562:PHE:H	1:F:565:ILE:HD11	1.87	0.40
1:D:527:GLN:O	1:D:527:GLN:HG3	2.20	0.40
1:E:656:GLU:HG2	1:F:648:ARG:NH2	2.36	0.40

Continued on next page...

Continued from previous page...

Atom-1	Atom-2	Interatomic distance (Å)	Clash overlap (Å)
1:F:375:ARG:NH2	1:F:377:ASP:OD2	2.51	0.40
1:A:653:GLN:HB2	1:A:658:LEU:HD23	2.04	0.40
1:A:716:MET:HG2	1:A:732:LEU:CD1	2.52	0.40
1:B:326:ILE:HG22	1:B:370:ILE:CG1	2.51	0.40
1:B:534:THR:HA	1:B:535:PRO:HD3	1.98	0.40
1:C:709:LYS:HA	1:C:709:LYS:HD2	1.93	0.40
1:D:258:LEU:HD11	1:D:372:MET:HG2	2.04	0.40
1:E:513:PRO:O	1:E:516:ARG:HG2	2.22	0.40
1:F:544:PRO:HA	1:F:545:PRO:HD3	1.98	0.40
1:F:588:ILE:O	1:F:591:ASP:HB2	2.21	0.40
1:A:436:PHE:HA	1:A:440:GLU:OE2	2.22	0.40
1:B:531:SER:CA	1:B:639:LYS:HD3	2.52	0.40
1:C:620:ASN:O	1:C:624:GLN:HG2	2.21	0.40
1:C:675:GLN:O	1:C:678:GLU:HB3	2.21	0.40
1:C:677:LEU:HD21	1:C:695:ALA:HA	2.03	0.40
1:D:319:ASN:HA	1:D:320:SER:HA	1.86	0.40
1:D:549:LYS:HE2	2:D:801:ADP:O1B	2.22	0.40
1:D:562:PHE:CD2	1:D:597:LEU:HG	2.56	0.40
1:E:640:LEU:HG	1:E:642:ILE:CD1	2.51	0.40
1:E:641:LEU:HD12	1:E:641:LEU:O	2.22	0.40
1:E:643:ILE:N	1:E:643:ILE:HD12	2.36	0.40
1:E:698:VAL:O	1:E:701:LYS:HB2	2.22	0.40
1:F:309:ALA:HA	1:F:312:GLU:OE1	2.22	0.40
1:F:605:ILE:N	1:F:606:GLU:OE1	2.54	0.40

There are no symmetry-related clashes.

5.3 Torsion angles [i](#)

5.3.1 Protein backbone [i](#)

In the following table, the Percentiles column shows the percent Ramachandran outliers of the chain as a percentile score with respect to all PDB entries followed by that with respect to all EM entries.

The Analysed column shows the number of residues for which the backbone conformation was analysed, and the total number of residues.

Mol	Chain	Analysed	Favoured	Allowed	Outliers	Percentiles
1	A	475/747 (64%)	443 (93%)	20 (4%)	12 (2%)	5 32

Continued on next page...

Continued from previous page...

Mol	Chain	Analysed	Favoured	Allowed	Outliers	Percentiles	
1	B	473/747 (63%)	429 (91%)	32 (7%)	12 (2%)	5	32
1	C	477/747 (64%)	450 (94%)	18 (4%)	9 (2%)	8	38
1	D	471/747 (63%)	439 (93%)	27 (6%)	5 (1%)	14	52
1	E	474/747 (64%)	441 (93%)	22 (5%)	11 (2%)	6	34
1	F	465/747 (62%)	428 (92%)	26 (6%)	11 (2%)	6	33
All	All	2835/4482 (63%)	2630 (93%)	145 (5%)	60 (2%)	10	36

All (60) Ramachandran outliers are listed below:

Mol	Chain	Res	Type
1	A	223	LEU
1	A	293	LYS
1	A	294	TYR
1	A	318	ALA
1	A	320	SER
1	A	333	ILE
1	B	283	LYS
1	B	297	GLU
1	B	318	ALA
1	B	439	ALA
1	B	489	LYS
1	C	297	GLU
1	C	318	ALA
1	C	498	ASP
1	C	578	GLU
1	D	283	LYS
1	D	318	ALA
1	D	489	LYS
1	E	283	LYS
1	E	297	GLU
1	E	318	ALA
1	E	439	ALA
1	E	489	LYS
1	F	283	LYS
1	F	297	GLU
1	F	318	ALA
1	F	397	LEU
1	F	439	ALA
1	F	489	LYS
1	A	264	CYS

Continued on next page...

Continued from previous page...

Mol	Chain	Res	Type
1	A	397	LEU
1	C	293	LYS
1	C	499	TYR
1	E	507	ILE
1	A	241	PRO
1	B	241	PRO
1	B	293	LYS
1	B	502	TYR
1	C	241	PRO
1	C	610	ASP
1	D	293	LYS
1	E	241	PRO
1	E	293	LYS
1	F	241	PRO
1	F	293	LYS
1	A	242	PRO
1	F	398	PRO
1	B	490	PRO
1	B	546	HIS
1	D	241	PRO
1	E	438	GLY
1	B	438	GLY
1	E	490	PRO
1	F	438	GLY
1	A	398	PRO
1	B	668	PRO
1	E	668	PRO
1	F	684	GLY
1	C	490	PRO
1	A	668	PRO

5.3.2 Protein sidechains [i](#)

In the following table, the Percentiles column shows the percent sidechain outliers of the chain as a percentile score with respect to all PDB entries followed by that with respect to all EM entries.

The Analysed column shows the number of residues for which the sidechain conformation was analysed, and the total number of residues.

Mol	Chain	Analysed	Rotameric	Outliers	Percentiles
1	A	344/638 (54%)	343 (100%)	1 (0%)	92 95

Continued on next page...

Continued from previous page...

Mol	Chain	Analysed	Rotameric	Outliers	Percentiles	
1	B	349/638 (55%)	346 (99%)	3 (1%)	78	87
1	C	347/638 (54%)	346 (100%)	1 (0%)	92	95
1	D	340/638 (53%)	339 (100%)	1 (0%)	92	95
1	E	345/638 (54%)	342 (99%)	3 (1%)	78	87
1	F	345/638 (54%)	342 (99%)	3 (1%)	78	87
All	All	2070/3828 (54%)	2058 (99%)	12 (1%)	86	92

All (12) residues with a non-rotameric sidechain are listed below:

Mol	Chain	Res	Type
1	A	322	LEU
1	B	305	LEU
1	B	322	LEU
1	B	651	VAL
1	C	305	LEU
1	D	305	LEU
1	E	305	LEU
1	E	322	LEU
1	E	327	PHE
1	F	305	LEU
1	F	322	LEU
1	F	536	LEU

Sometimes sidechains can be flipped to improve hydrogen bonding and reduce clashes. All (15) such sidechains are listed below:

Mol	Chain	Res	Type
1	A	530	ASN
1	A	596	GLN
1	A	685	ASN
1	B	352	ASN
1	B	526	GLN
1	B	620	ASN
1	C	319	ASN
1	C	352	ASN
1	C	675	GLN
1	D	313	GLN
1	D	319	ASN
1	D	352	ASN
1	D	527	GLN

Continued on next page...

Continued from previous page...

Mol	Chain	Res	Type
1	E	675	GLN
1	F	546	HIS

5.3.3 RNA [i](#)

There are no RNA molecules in this entry.

5.4 Non-standard residues in protein, DNA, RNA chains [i](#)

There are no non-standard protein/DNA/RNA residues in this entry.

5.5 Carbohydrates [i](#)

There are no monosaccharides in this entry.

5.6 Ligand geometry [i](#)

4 ligands are modelled in this entry.

In the following table, the Counts columns list the number of bonds (or angles) for which Mogul statistics could be retrieved, the number of bonds (or angles) that are observed in the model and the number of bonds (or angles) that are defined in the Chemical Component Dictionary. The Link column lists molecule types, if any, to which the group is linked. The Z score for a bond length (or angle) is the number of standard deviations the observed value is removed from the expected value. A bond length (or angle) with $|Z| > 2$ is considered an outlier worth inspection. RMSZ is the root-mean-square of all Z scores of the bond lengths (or angles).

Mol	Type	Chain	Res	Link	Bond lengths			Bond angles		
					Counts	RMSZ	# Z > 2	Counts	RMSZ	# Z > 2
2	ADP	D	801	-	24,29,29	1.08	1 (4%)	29,45,45	2.04	7 (24%)
2	ADP	E	801	-	24,29,29	1.27	3 (12%)	29,45,45	1.52	7 (24%)
2	ADP	C	801	-	24,29,29	1.22	4 (16%)	29,45,45	1.91	8 (27%)
2	ADP	B	801	-	24,29,29	1.06	2 (8%)	29,45,45	1.66	6 (20%)

In the following table, the Chirals column lists the number of chiral outliers, the number of chiral centers analysed, the number of these observed in the model and the number defined in the Chemical Component Dictionary. Similar counts are reported in the Torsion and Rings columns. '-' means no outliers of that kind were identified.

Mol	Type	Chain	Res	Link	Chirals	Torsions	Rings
2	ADP	D	801	-	-	3/12/32/32	0/3/3/3
2	ADP	E	801	-	-	2/12/32/32	0/3/3/3
2	ADP	C	801	-	-	1/12/32/32	0/3/3/3
2	ADP	B	801	-	-	5/12/32/32	0/3/3/3

All (10) bond length outliers are listed below:

Mol	Chain	Res	Type	Atoms	Z	Observed(Å)	Ideal(Å)
2	C	801	ADP	C5-C4	3.50	1.50	1.40
2	E	801	ADP	C5-C4	2.97	1.48	1.40
2	E	801	ADP	C2-N3	2.78	1.36	1.32
2	E	801	ADP	O4'-C1'	2.63	1.44	1.41
2	B	801	ADP	O4'-C1'	2.62	1.44	1.41
2	C	801	ADP	O4'-C1'	2.53	1.44	1.41
2	B	801	ADP	C5-C4	2.42	1.47	1.40
2	D	801	ADP	C2-N3	2.36	1.35	1.32
2	C	801	ADP	C8-N7	2.04	1.38	1.34
2	C	801	ADP	C6-C5	2.02	1.50	1.43

All (28) bond angle outliers are listed below:

Mol	Chain	Res	Type	Atoms	Z	Observed(°)	Ideal(°)
2	D	801	ADP	N3-C2-N1	-5.61	119.91	128.68
2	C	801	ADP	C3'-C2'-C1'	5.40	109.11	100.98
2	B	801	ADP	C4-C5-N7	-4.75	104.45	109.40
2	D	801	ADP	PA-O3A-PB	-4.69	116.74	132.83
2	D	801	ADP	C3'-C2'-C1'	4.12	107.17	100.98
2	C	801	ADP	N3-C2-N1	-3.49	123.23	128.68
2	D	801	ADP	C4-C5-N7	-3.47	105.78	109.40
2	B	801	ADP	C3'-C2'-C1'	3.45	106.18	100.98
2	C	801	ADP	C1'-N9-C4	-3.31	120.83	126.64
2	B	801	ADP	PA-O3A-PB	-3.09	122.22	132.83
2	E	801	ADP	N6-C6-N1	2.96	124.72	118.57
2	E	801	ADP	C2'-C3'-C4'	2.91	108.30	102.64
2	C	801	ADP	C4-C5-N7	-2.89	106.39	109.40
2	E	801	ADP	C4-C5-N7	-2.76	106.53	109.40
2	C	801	ADP	O4'-C1'-C2'	-2.71	102.97	106.93
2	E	801	ADP	O4'-C4'-C5'	2.59	117.88	109.37
2	C	801	ADP	PA-O3A-PB	-2.57	124.02	132.83
2	B	801	ADP	O5'-C5'-C4'	2.39	117.21	108.99
2	D	801	ADP	C2-N1-C6	2.35	122.78	118.75
2	C	801	ADP	C2-N1-C6	2.29	122.67	118.75

Continued on next page...

Continued from previous page...

Mol	Chain	Res	Type	Atoms	Z	Observed(°)	Ideal(°)
2	E	801	ADP	C1'-N9-C4	2.23	130.55	126.64
2	C	801	ADP	O2'-C2'-C3'	-2.22	104.64	111.82
2	E	801	ADP	O5'-C5'-C4'	2.17	116.45	108.99
2	B	801	ADP	C5-C6-N6	2.13	123.59	120.35
2	B	801	ADP	N3-C2-N1	-2.06	125.47	128.68
2	E	801	ADP	C5-C6-N6	-2.04	117.25	120.35
2	D	801	ADP	O2A-PA-O5'	-2.03	98.30	107.75
2	D	801	ADP	O2'-C2'-C1'	-2.02	103.38	110.85

There are no chirality outliers.

All (11) torsion outliers are listed below:

Mol	Chain	Res	Type	Atoms
2	B	801	ADP	C5'-O5'-PA-O1A
2	B	801	ADP	C3'-C4'-C5'-O5'
2	E	801	ADP	C5'-O5'-PA-O2A
2	E	801	ADP	C5'-O5'-PA-O3A
2	B	801	ADP	O4'-C4'-C5'-O5'
2	D	801	ADP	O4'-C4'-C5'-O5'
2	B	801	ADP	C5'-O5'-PA-O3A
2	B	801	ADP	C5'-O5'-PA-O2A
2	D	801	ADP	C3'-C4'-C5'-O5'
2	D	801	ADP	C5'-O5'-PA-O1A
2	C	801	ADP	O4'-C4'-C5'-O5'

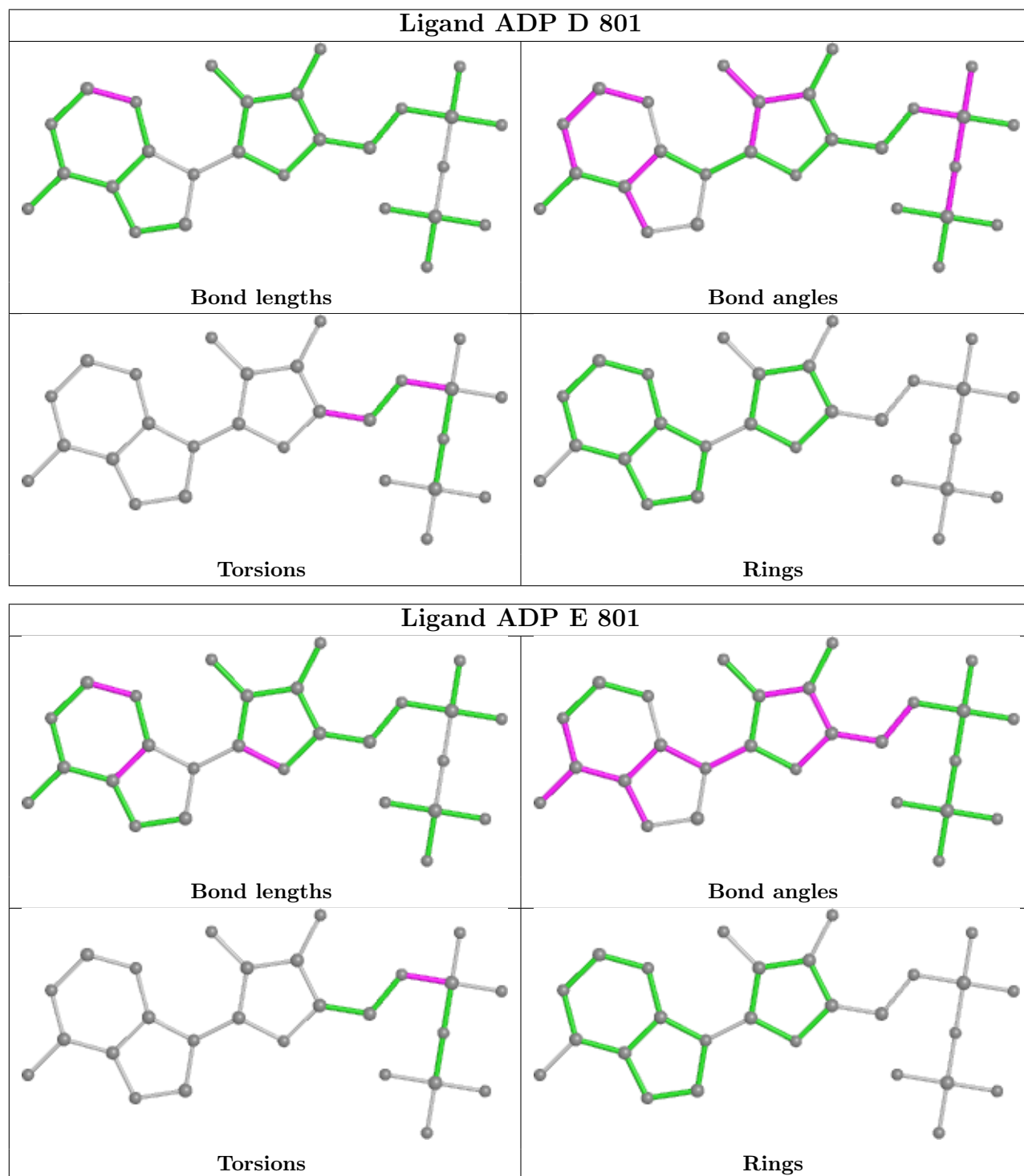
There are no ring outliers.

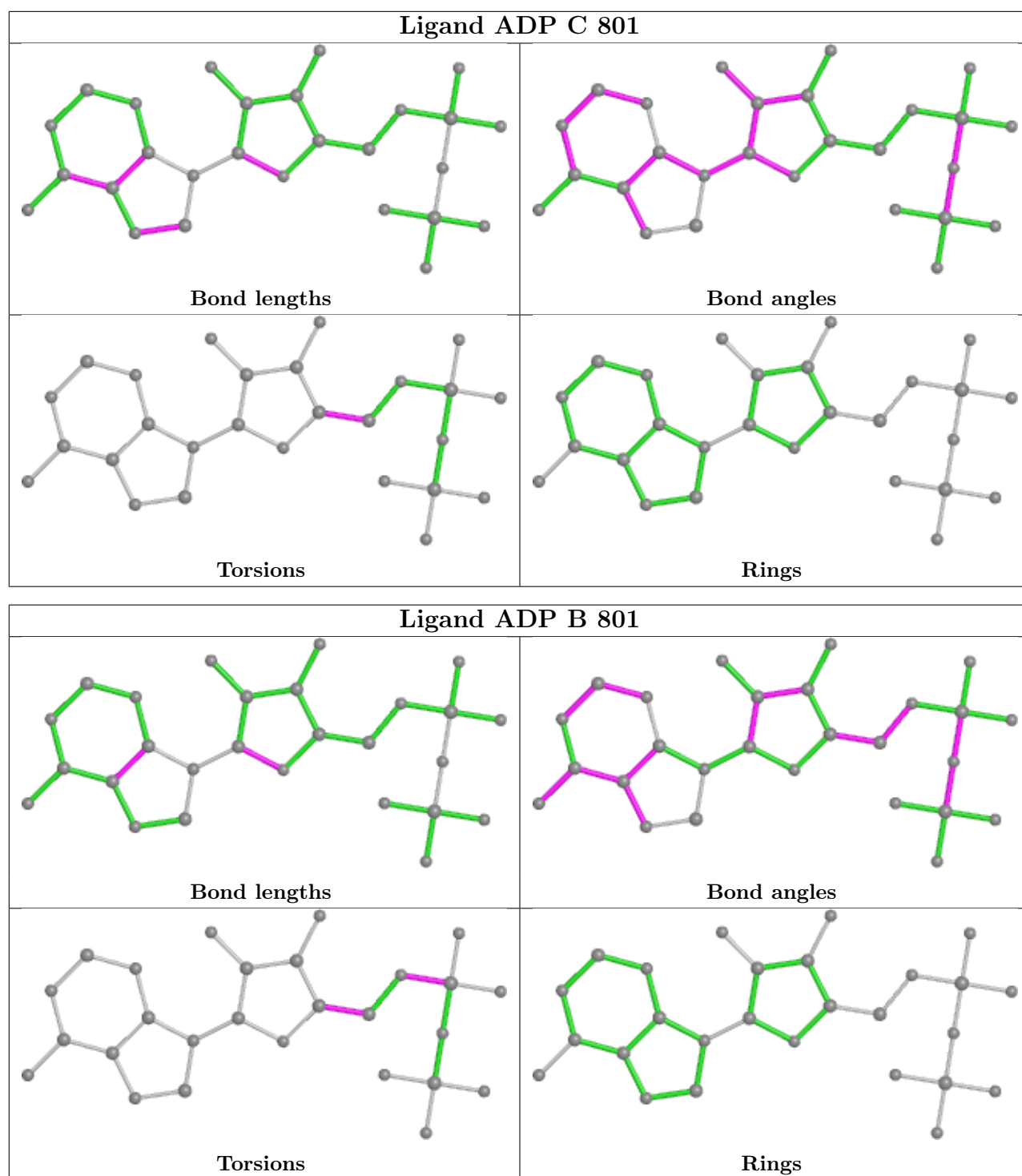
4 monomers are involved in 39 short contacts:

Mol	Chain	Res	Type	Clashes	Symm-Clashes
2	D	801	ADP	11	0
2	E	801	ADP	9	0
2	C	801	ADP	8	0
2	B	801	ADP	11	0

The following is a two-dimensional graphical depiction of Mogul quality analysis of bond lengths, bond angles, torsion angles, and ring geometry for all instances of the Ligand of Interest. In addition, ligands with molecular weight > 250 and outliers as shown on the validation Tables will also be included. For torsion angles, if less than 5% of the Mogul distribution of torsion angles is within 10 degrees of the torsion angle in question, then that torsion angle is considered an outlier. Any bond that is central to one or more torsion angles identified as an outlier by Mogul will be highlighted in the graph. For rings, the root-mean-square deviation (RMSD) between the ring in question and similar rings identified by Mogul is calculated over all ring torsion angles. If the

average RMSD is greater than 60 degrees and the minimal RMSD between the ring in question and any Mogul-identified rings is also greater than 60 degrees, then that ring is considered an outlier. The outliers are highlighted in purple. The color gray indicates Mogul did not find sufficient equivalents in the CSD to analyse the geometry.





5.7 Other polymers [\(i\)](#)

There are no such residues in this entry.

5.8 Polymer linkage issues

There are no chain breaks in this entry.

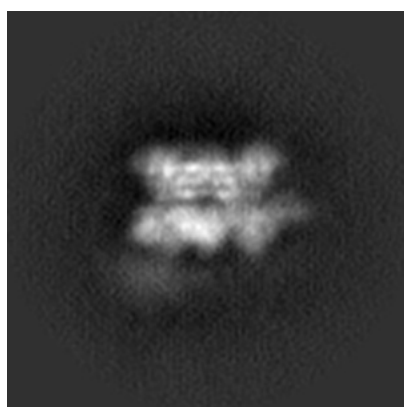
6 Map visualisation [i](#)

This section contains visualisations of the EMDB entry EMD-6205. These allow visual inspection of the internal detail of the map and identification of artifacts.

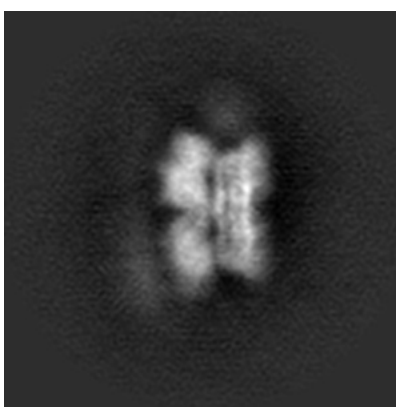
No raw map or half-maps were deposited for this entry and therefore no images, graphs, etc. pertaining to the raw map can be shown.

6.1 Orthogonal projections [i](#)

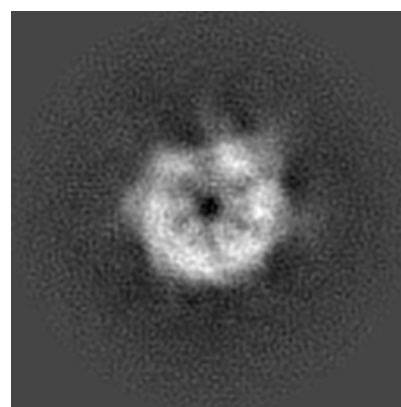
6.1.1 Primary map



X



Y

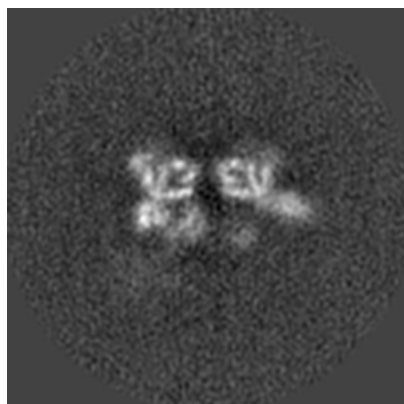


Z

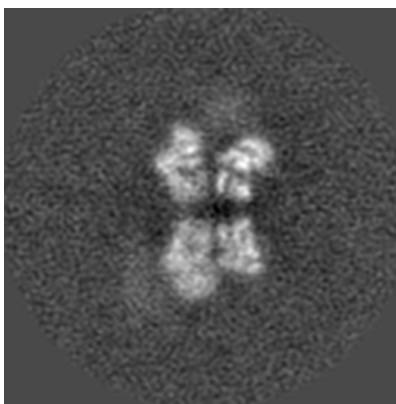
The images above show the map projected in three orthogonal directions.

6.2 Central slices [i](#)

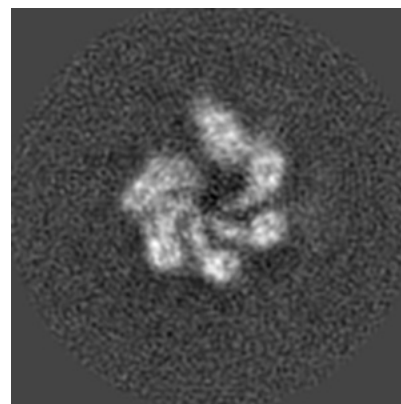
6.2.1 Primary map



X Index: 64



Y Index: 64

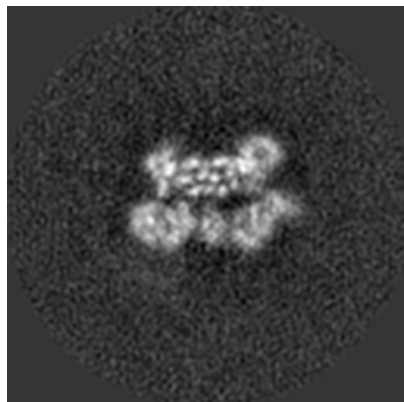


Z Index: 64

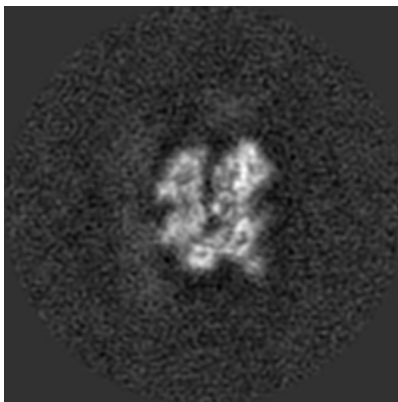
The images above show central slices of the map in three orthogonal directions.

6.3 Largest variance slices [\(i\)](#)

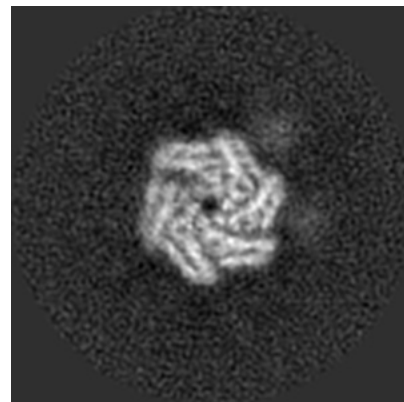
6.3.1 Primary map



X Index: 71



Y Index: 51

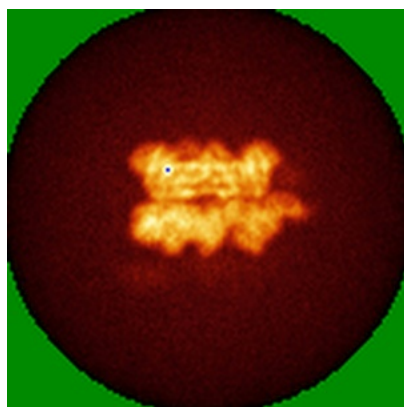


Z Index: 77

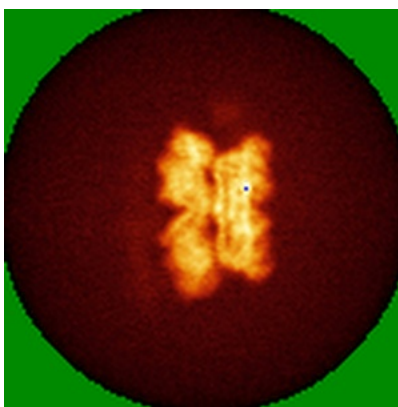
The images above show the largest variance slices of the map in three orthogonal directions.

6.4 Orthogonal standard-deviation projections (False-color) [\(i\)](#)

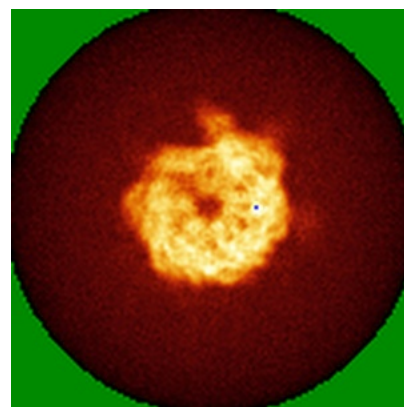
6.4.1 Primary map



X



Y

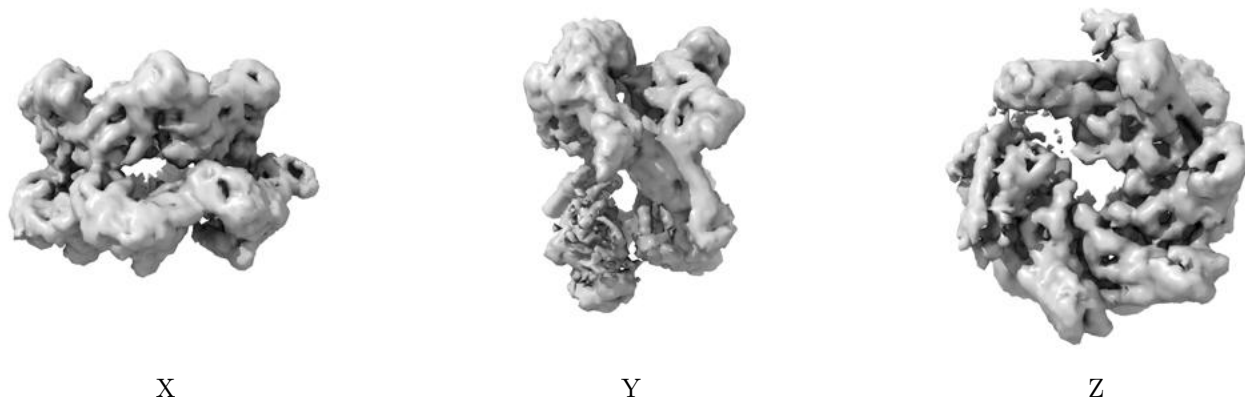


Z

The images above show the map standard deviation projections with false color in three orthogonal directions. Minimum values are shown in green, max in blue, and dark to light orange shades represent small to large values respectively.

6.5 Orthogonal surface views [i](#)

6.5.1 Primary map



The images above show the 3D surface view of the map at the recommended contour level 6.0. These images, in conjunction with the slice images, may facilitate assessment of whether an appropriate contour level has been provided.

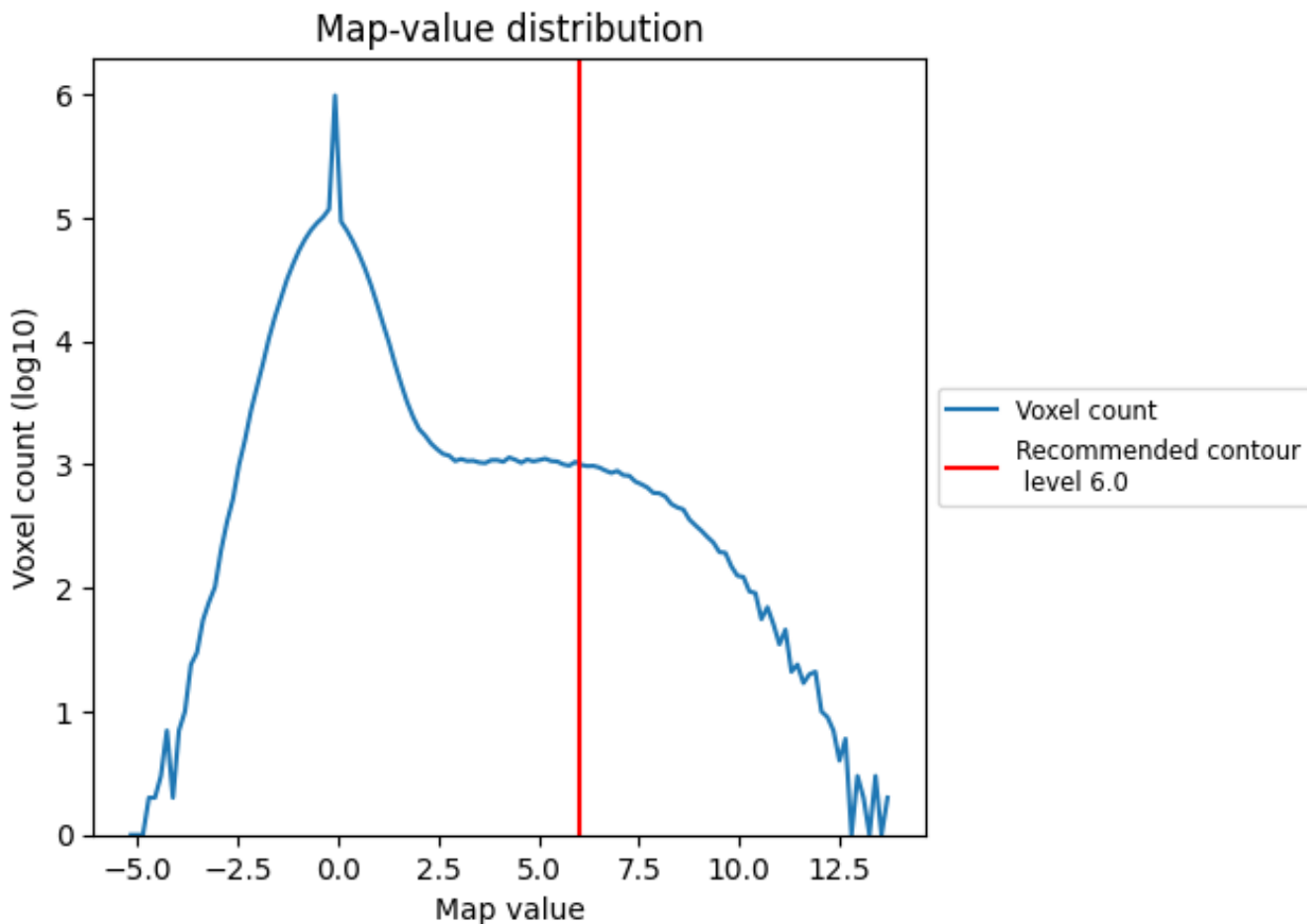
6.6 Mask visualisation [i](#)

This section was not generated. No masks/segmentation were deposited.

7 Map analysis [i](#)

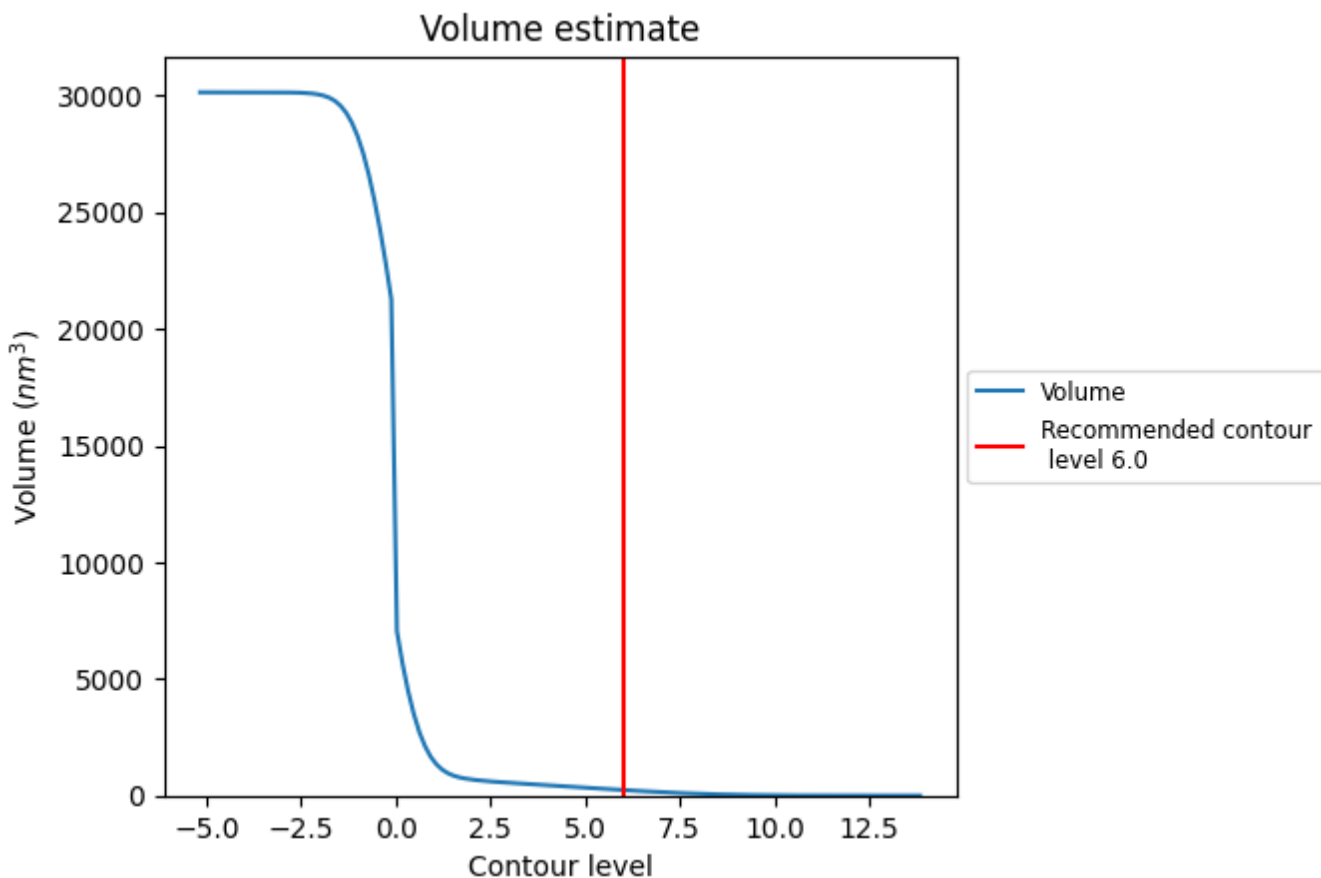
This section contains the results of statistical analysis of the map.

7.1 Map-value distribution [i](#)



The map-value distribution is plotted in 128 intervals along the x-axis. The y-axis is logarithmic. A spike in this graph at zero usually indicates that the volume has been masked.

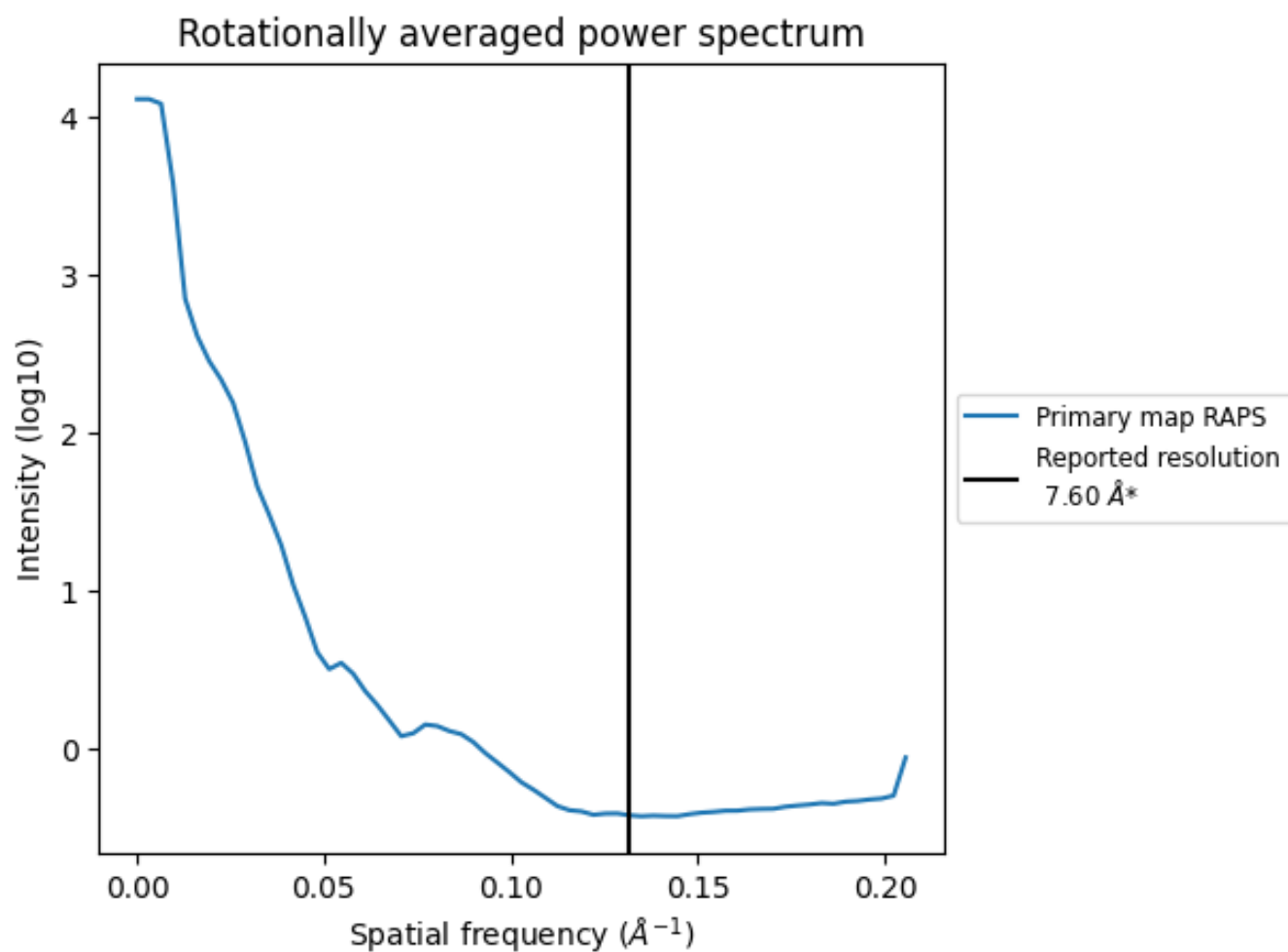
7.2 Volume estimate [i](#)



The volume at the recommended contour level is 239 nm³; this corresponds to an approximate mass of 216 kDa.

The volume estimate graph shows how the enclosed volume varies with the contour level. The recommended contour level is shown as a vertical line and the intersection between the line and the curve gives the volume of the enclosed surface at the given level.

7.3 Rotationally averaged power spectrum [i](#)



*Reported resolution corresponds to spatial frequency of 0.132 Å⁻¹

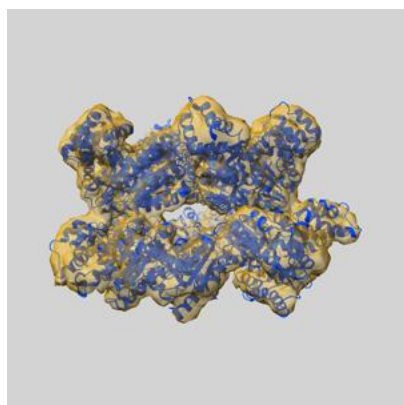
8 Fourier-Shell correlation

This section was not generated. No FSC curve or half-maps provided.

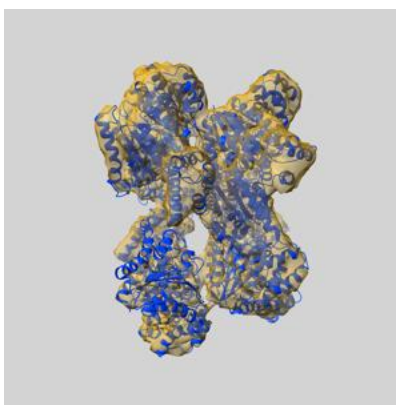
9 Map-model fit [i](#)

This section contains information regarding the fit between EMDB map EMD-6205 and PDB model 3J95. Per-residue inclusion information can be found in section 3 on page 6.

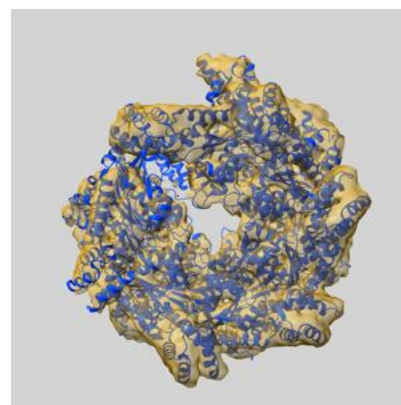
9.1 Map-model overlay [i](#)



X



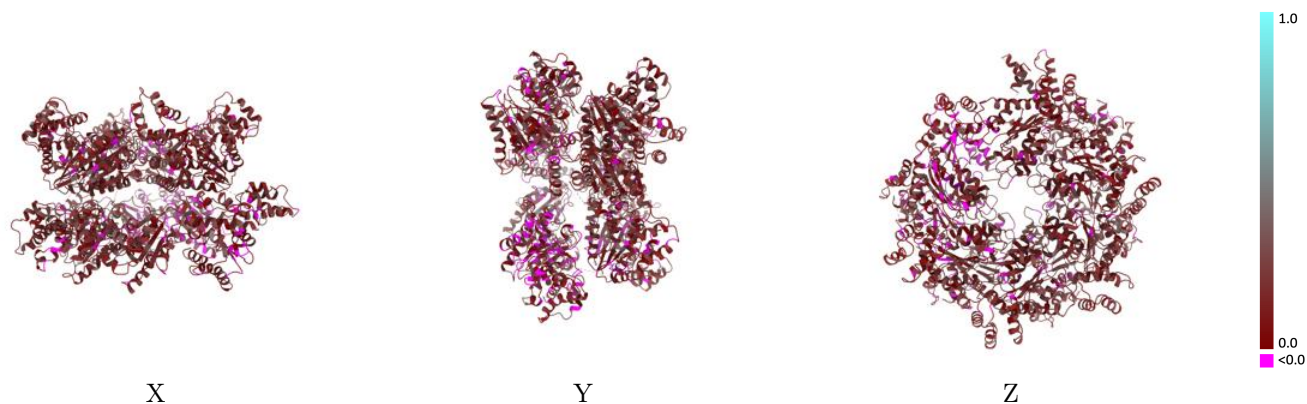
Y



Z

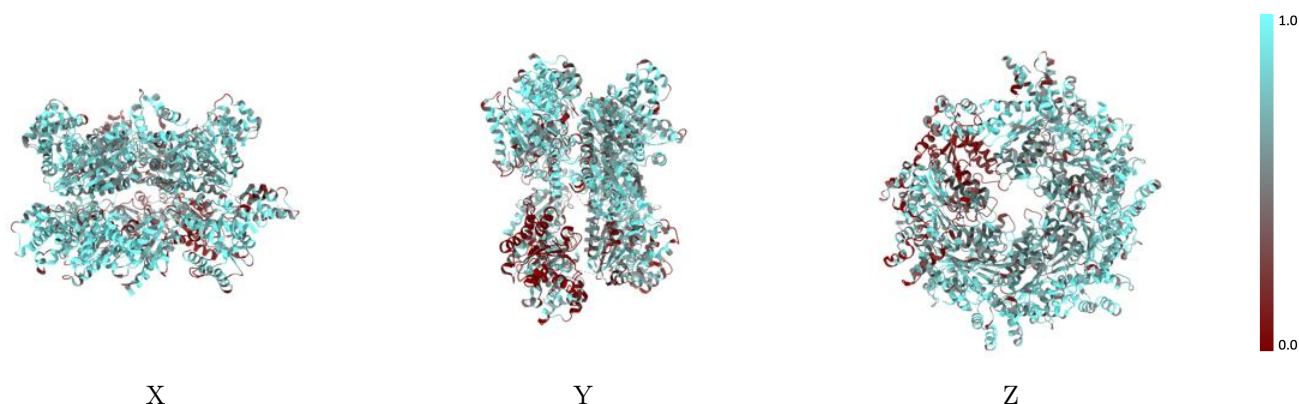
The images above show the 3D surface view of the map at the recommended contour level 6.0 at 50% transparency in yellow overlaid with a ribbon representation of the model coloured in blue. These images allow for the visual assessment of the quality of fit between the atomic model and the map.

9.2 Q-score mapped to coordinate model [i](#)



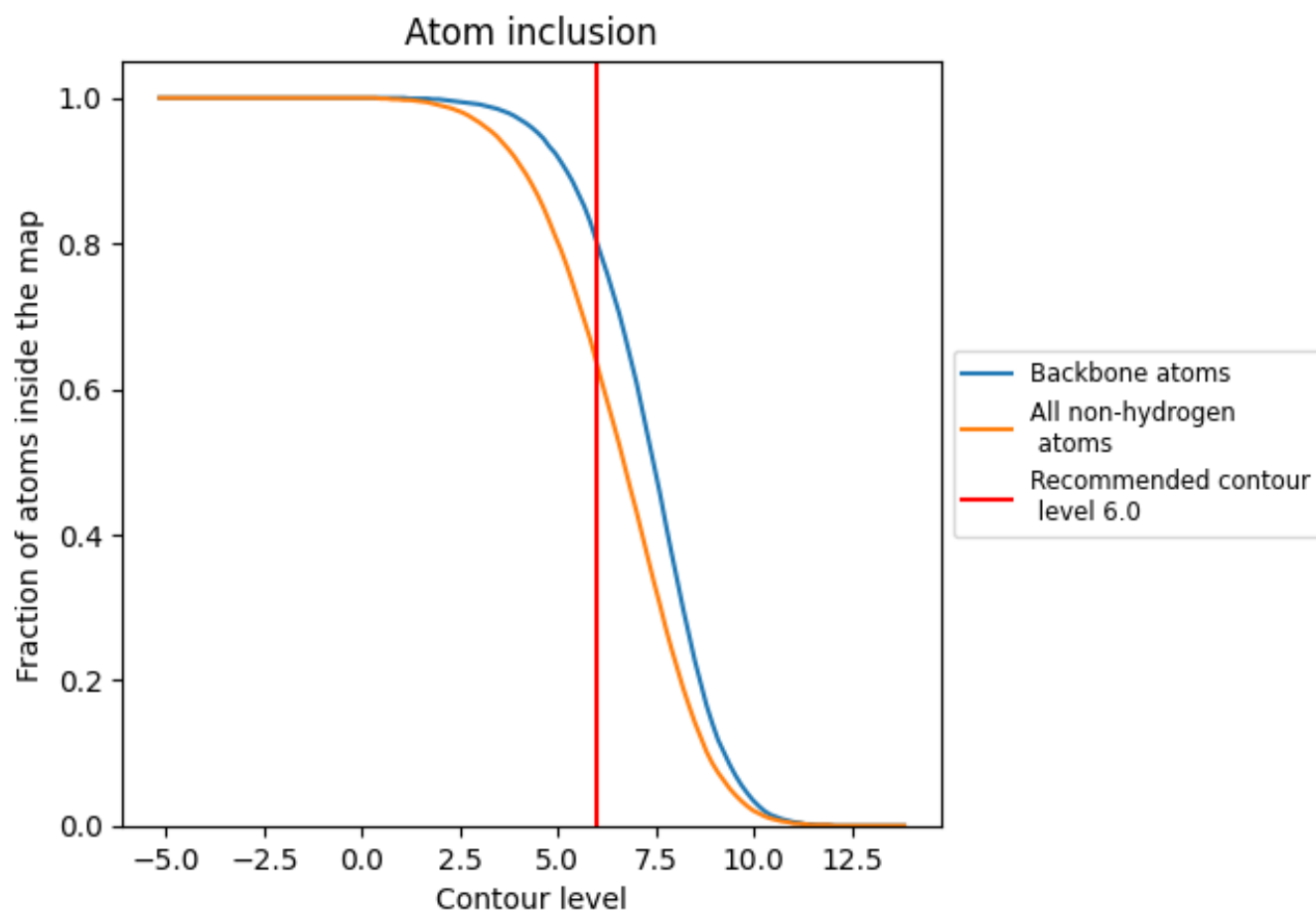
The images above show the model with each residue coloured according its Q-score. This shows their resolvability in the map with higher Q-score values reflecting better resolvability. Please note: Q-score is calculating the resolvability of atoms, and thus high values are only expected at resolutions at which atoms can be resolved. Low Q-score values may therefore be expected for many entries.

9.3 Atom inclusion mapped to coordinate model [i](#)



The images above show the model with each residue coloured according to its atom inclusion. This shows to what extent they are inside the map at the recommended contour level (6.0).















9.4 Atom inclusion [i](#)



At the recommended contour level, 80% of all backbone atoms, 63% of all non-hydrogen atoms, are inside the map.

9.5 Map-model fit summary [i](#)

The table lists the average atom inclusion at the recommended contour level (6.0) and Q-score for the entire model and for each chain.

Chain	Atom inclusion	Q-score
All	 0.6340	 0.1590
A	 0.6410	 0.1540
B	 0.6920	 0.1590
C	 0.7250	 0.1840
D	 0.7220	 0.1800
E	 0.6600	 0.1560
F	 0.3590	 0.1170

