



Full wwPDB X-ray Structure Validation Report ⓘ

Aug 27, 2023 – 07:16 PM EDT

PDB ID : 3HQ6
Title : Cytochrome c peroxidase from *G. sulfurreducens*, wild type
Authors : Hoffmann, M.; Seidel, J.; Einsle, O.
Deposited on : 2009-06-05
Resolution : 2.00 Å(reported)

This is a Full wwPDB X-ray Structure Validation Report for a publicly released PDB entry.

We welcome your comments at validation@mail.wwpdb.org

A user guide is available at

<https://www.wwpdb.org/validation/2017/XrayValidationReportHelp>

with specific help available everywhere you see the ⓘ symbol.

The types of validation reports are described at

<http://www.wwpdb.org/validation/2017/FAQs#types>.

The following versions of software and data (see [references ⓘ](#)) were used in the production of this report:

MolProbity : 4.02b-467
Mogul : 1.8.5 (274361), CSD as541be (2020)
Xtriage (Phenix) : 1.13
EDS : 2.35
buster-report : 1.1.7 (2018)
Percentile statistics : 20191225.v01 (using entries in the PDB archive December 25th 2019)
Refmac : 5.8.0158
CCP4 : 7.0.044 (Gargrove)
Ideal geometry (proteins) : Engh & Huber (2001)
Ideal geometry (DNA, RNA) : Parkinson et al. (1996)
Validation Pipeline (wwPDB-VP) : 2.35

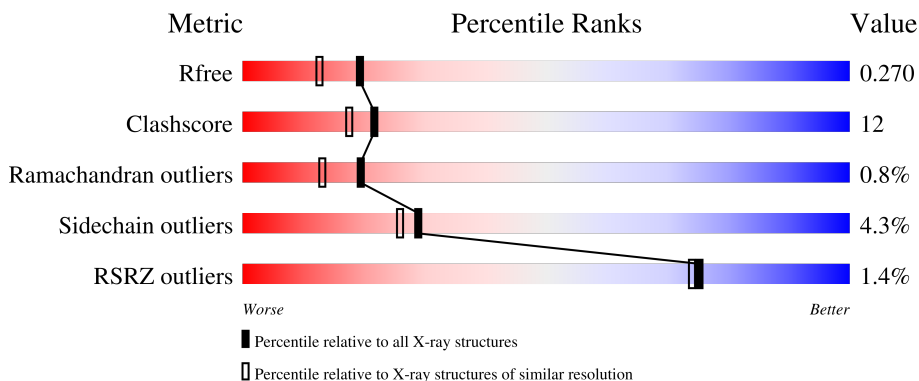
1 Overall quality at a glance

The following experimental techniques were used to determine the structure:

X-RAY DIFFRACTION

The reported resolution of this entry is 2.00 Å.

Percentile scores (ranging between 0-100) for global validation metrics of the entry are shown in the following graphic. The table shows the number of entries on which the scores are based.



Metric	Whole archive (#Entries)	Similar resolution (#Entries, resolution range(Å))
R_{free}	130704	8085 (2.00-2.00)
Clashscore	141614	9178 (2.00-2.00)
Ramachandran outliers	138981	9054 (2.00-2.00)
Sidechain outliers	138945	9053 (2.00-2.00)
RSRZ outliers	127900	7900 (2.00-2.00)

The table below summarises the geometric issues observed across the polymeric chains and their fit to the electron density. The red, orange, yellow and green segments of the lower bar indicate the fraction of residues that contain outliers for ≥ 3 , 2, 1 and 0 types of geometric quality criteria respectively. A grey segment represents the fraction of residues that are not modelled. The numeric value for each fraction is indicated below the corresponding segment, with a dot representing fractions $\leq 5\%$. The upper red bar (where present) indicates the fraction of residues that have poor fit to the electron density. The numeric value is given above the bar.

Mol	Chain	Length	Quality of chain
1	A	345	 2% 73% 17% 6%
1	B	345	 % 73% 16% 9%

2 Entry composition [i](#)

There are 4 unique types of molecules in this entry. The entry contains 5716 atoms, of which 0 are hydrogens and 0 are deuteriums.

In the tables below, the ZeroOcc column contains the number of atoms modelled with zero occupancy, the AltConf column contains the number of residues with at least one atom in alternate conformation and the Trace column contains the number of residues modelled with at most 2 atoms.

- Molecule 1 is a protein called Cytochrome c551 peroxidase.

Mol	Chain	Residues	Atoms					ZeroOcc	AltConf	Trace
			Total	C	N	O	S			
1	A	324	Total	C	N	O	S	0	0	0
			2451	1566	418	458	9			
1	B	313	Total	C	N	O	S	0	0	0
			2370	1514	405	442	9			

- Molecule 2 is PROTOPORPHYRIN IX CONTAINING FE (three-letter code: HEM) (formula: $C_{34}H_{32}FeN_4O_4$).



Mol	Chain	Residues	Atoms				ZeroOcc	AltConf	
			Total	C	Fe	N			O
2	A	1	Total	C	Fe	N	O	0	0
			43	34	1	4	4		
2	A	1	Total	C	Fe	N	O	0	0
			43	34	1	4	4		
2	B	1	Total	C	Fe	N	O	0	0
			43	34	1	4	4		
2	B	1	Total	C	Fe	N	O	0	0
			43	34	1	4	4		

- Molecule 3 is CALCIUM ION (three-letter code: CA) (formula: Ca).

Mol	Chain	Residues	Atoms		ZeroOcc	AltConf
3	A	1	Total 1	Ca 1	0	0
3	B	1	Total 1	Ca 1	0	0

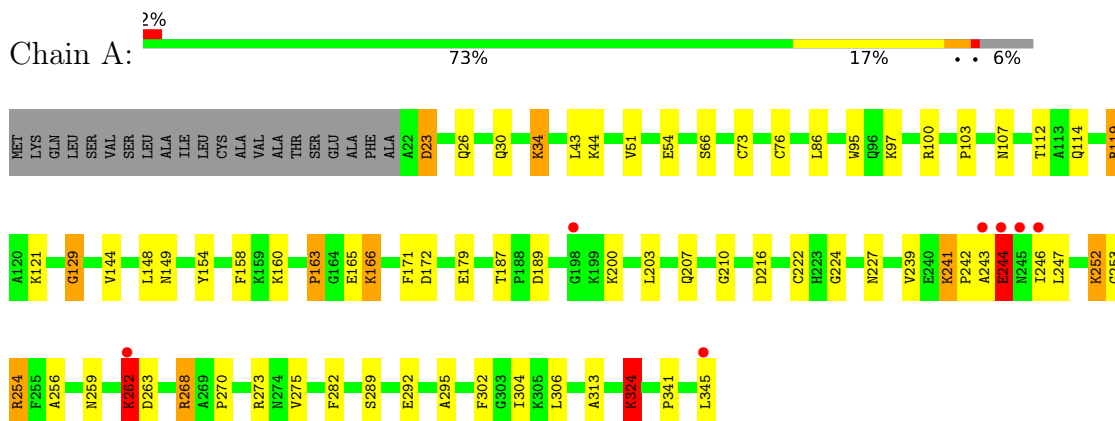
- Molecule 4 is water.

Mol	Chain	Residues	Atoms		ZeroOcc	AltConf
4	A	342	Total 342	O 342	0	0
4	B	379	Total 379	O 379	0	0

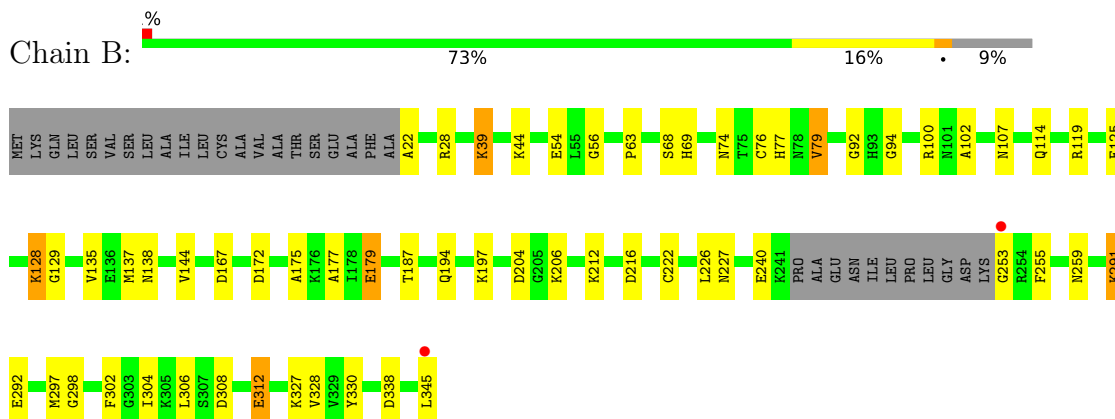
3 Residue-property plots [i](#)

These plots are drawn for all protein, RNA, DNA and oligosaccharide chains in the entry. The first graphic for a chain summarises the proportions of the various outlier classes displayed in the second graphic. The second graphic shows the sequence view annotated by issues in geometry and electron density. Residues are color-coded according to the number of geometric quality criteria for which they contain at least one outlier: green = 0, yellow = 1, orange = 2 and red = 3 or more. A red dot above a residue indicates a poor fit to the electron density ($RSRZ > 2$). Stretches of 2 or more consecutive residues without any outlier are shown as a green connector. Residues present in the sample, but not in the model, are shown in grey.

- Molecule 1: Cytochrome c551 peroxidase



- Molecule 1: Cytochrome c551 peroxidase



4 Data and refinement statistics

Property	Value	Source
Space group	P 1	Depositor
Cell constants a, b, c, α , β , γ	54.24Å 55.78Å 78.64Å 68.69° 71.84° 57.76°	Depositor
Resolution (Å)	70.00 – 2.00 36.22 – 2.00	Depositor EDS
% Data completeness (in resolution range)	94.6 (70.00-2.00) 94.6 (36.22-2.00)	Depositor EDS
R_{merge}	(Not available)	Depositor
R_{sym}	0.09	Depositor
$\langle I/\sigma(I) \rangle$ ¹	2.24 (at 2.00Å)	Xtrriage
Refinement program	REFMAC 5.2.0019	Depositor
R, R_{free}	0.189 , 0.266 0.192 , 0.270	Depositor DCC
R_{free} test set	2319 reflections (5.05%)	wwPDB-VP
Wilson B-factor (Å ²)	19.9	Xtrriage
Anisotropy	0.173	Xtrriage
Bulk solvent k_{sol} (e/Å ³), B_{sol} (Å ²)	0.30 , 43.9	EDS
L-test for twinning ²	$\langle L \rangle = 0.51$, $\langle L^2 \rangle = 0.34$	Xtrriage
Estimated twinning fraction	0.010 for -h+k,k,k-l	Xtrriage
F_o, F_c correlation	0.94	EDS
Total number of atoms	5716	wwPDB-VP
Average B, all atoms (Å ²)	24.0	wwPDB-VP

Xtrriage's analysis on translational NCS is as follows: *The largest off-origin peak in the Patterson function is 6.34% of the height of the origin peak. No significant pseudotranslation is detected.*

¹Intensities estimated from amplitudes.

²Theoretical values of $\langle |L| \rangle$, $\langle L^2 \rangle$ for acentric reflections are 0.5, 0.333 respectively for untwinned datasets, and 0.375, 0.2 for perfectly twinned datasets.

5 Model quality [i](#)

5.1 Standard geometry [i](#)

Bond lengths and bond angles in the following residue types are not validated in this section: HEM, CA

The Z score for a bond length (or angle) is the number of standard deviations the observed value is removed from the expected value. A bond length (or angle) with $|Z| > 5$ is considered an outlier worth inspection. RMSZ is the root-mean-square of all Z scores of the bond lengths (or angles).

Mol	Chain	Bond lengths		Bond angles	
		RMSZ	# Z >5	RMSZ	# Z >5
1	A	1.28	10/2511 (0.4%)	1.06	6/3408 (0.2%)
1	B	1.33	8/2427 (0.3%)	1.08	8/3291 (0.2%)
All	All	1.30	18/4938 (0.4%)	1.07	14/6699 (0.2%)

Chiral center outliers are detected by calculating the chiral volume of a chiral center and verifying if the center is modelled as a planar moiety or with the opposite hand. A planarity outlier is detected by checking planarity of atoms in a peptide group, atoms in a mainchain group or atoms of a sidechain that are expected to be planar.

Mol	Chain	#Chirality outliers	#Planarity outliers
1	A	0	1

All (18) bond length outliers are listed below:

Mol	Chain	Res	Type	Atoms	Z	Observed(Å)	Ideal(Å)
1	B	292	GLU	CG-CD	7.84	1.63	1.51
1	A	275	VAL	CB-CG2	6.25	1.66	1.52
1	B	94	GLY	N-CA	6.06	1.55	1.46
1	A	282	PHE	CE2-CZ	5.86	1.48	1.37
1	A	66	SER	CB-OG	5.83	1.49	1.42
1	A	179	GLU	CD-OE1	5.81	1.32	1.25
1	B	54	GLU	CG-CD	5.77	1.60	1.51
1	A	171	PHE	CD1-CE1	5.72	1.50	1.39
1	B	102	ALA	CA-CB	5.63	1.64	1.52
1	B	79	VAL	CB-CG2	5.62	1.64	1.52
1	A	54	GLU	CG-CD	5.58	1.60	1.51
1	B	125	GLU	CG-CD	5.52	1.60	1.51
1	A	295	ALA	CA-CB	-5.47	1.41	1.52
1	B	330	TYR	CD2-CE2	5.39	1.47	1.39
1	B	179	GLU	CB-CG	5.11	1.61	1.52
1	A	224	GLY	N-CA	5.09	1.53	1.46

Continued on next page...

Continued from previous page...

Mol	Chain	Res	Type	Atoms	Z	Observed(Å)	Ideal(Å)
1	A	324	LYS	CD-CE	5.07	1.64	1.51
1	A	112	THR	CB-CG2	5.06	1.69	1.52

All (14) bond angle outliers are listed below:

Mol	Chain	Res	Type	Atoms	Z	Observed(°)	Ideal(°)
1	B	338	ASP	CB-CG-OD1	6.76	124.38	118.30
1	B	298	GLY	N-CA-C	-6.33	97.28	113.10
1	A	216	ASP	CB-CG-OD2	-5.92	112.97	118.30
1	B	306	LEU	CB-CG-CD1	-5.66	101.38	111.00
1	B	119	ARG	NE-CZ-NH2	5.65	123.12	120.30
1	A	86	LEU	CA-CB-CG	5.64	128.28	115.30
1	B	338	ASP	CB-CG-OD2	-5.48	113.36	118.30
1	A	306	LEU	CB-CG-CD2	5.45	120.27	111.00
1	B	345	LEU	CA-CB-CG	5.34	127.59	115.30
1	A	100	ARG	NE-CZ-NH1	5.34	122.97	120.30
1	B	226	LEU	CB-CG-CD2	-5.23	102.11	111.00
1	A	172	ASP	CB-CG-OD1	5.23	123.01	118.30
1	A	163	PRO	C-N-CA	-5.17	111.44	122.30
1	B	100	ARG	NE-CZ-NH1	-5.07	117.77	120.30

There are no chirality outliers.

All (1) planarity outliers are listed below:

Mol	Chain	Res	Type	Group
1	A	23	ASP	Peptide

5.2 Too-close contacts

In the following table, the Non-H and H(model) columns list the number of non-hydrogen atoms and hydrogen atoms in the chain respectively. The H(added) column lists the number of hydrogen atoms added and optimized by MolProbity. The Clashes column lists the number of clashes within the asymmetric unit, whereas Symm-Clashes lists symmetry-related clashes.

Mol	Chain	Non-H	H(model)	H(added)	Clashes	Symm-Clashes
1	A	2451	0	2454	68	0
1	B	2370	0	2369	50	0
2	A	86	0	60	18	0
2	B	86	0	60	16	0
3	A	1	0	0	0	0
3	B	1	0	0	0	0

Continued on next page...

Continued from previous page...

Mol	Chain	Non-H	H(model)	H(added)	Clashes	Symm-Clashes
4	A	342	0	0	10	4
4	B	379	0	0	13	4
All	All	5716	0	4943	118	4

The all-atom clashscore is defined as the number of clashes found per 1000 atoms (including hydrogen atoms). The all-atom clashscore for this structure is 12.

All (118) close contacts within the same asymmetric unit are listed below, sorted by their clash magnitude.

Atom-1	Atom-2	Interatomic distance (Å)	Clash overlap (Å)
1:A:73:CYS:SG	2:A:400:HEM:CAB	2.03	1.47
1:A:73:CYS:SG	2:A:400:HEM:HAB	1.62	1.40
1:A:76:CYS:SG	2:A:400:HEM:CAC	2.10	1.39
1:A:222:CYS:HG	2:A:401:HEM:CAC	1.47	1.26
1:B:222:CYS:SG	2:B:401:HEM:CAC	2.25	1.25
1:A:222:CYS:SG	2:A:401:HEM:CAC	2.25	1.24
1:B:76:CYS:SG	2:B:400:HEM:CAC	2.29	1.21
1:B:44:LYS:HD3	4:B:660:HOH:O	1.53	1.09
1:B:222:CYS:HG	2:B:401:HEM:CAC	1.61	1.08
1:B:28:ARG:HD2	4:B:653:HOH:O	1.52	1.07
1:A:304:ILE:O	4:A:509:HOH:O	1.76	1.03
1:A:76:CYS:SG	2:A:400:HEM:HAC	2.00	1.01
1:A:166:LYS:HE3	1:A:166:LYS:H	1.31	0.95
1:B:172:ASP:HB2	4:B:584:HOH:O	1.66	0.95
1:A:246:ILE:HG22	1:A:246:ILE:O	1.66	0.92
1:B:76:CYS:HG	2:B:400:HEM:CAC	1.77	0.90
1:A:254:ARG:HH21	1:A:254:ARG:HG2	1.36	0.88
1:A:243:ALA:O	1:A:244:GLU:HG3	1.76	0.85
1:B:222:CYS:SG	2:B:401:HEM:CBC	2.66	0.84
1:A:51:VAL:HG23	4:A:592:HOH:O	1.79	0.83
1:A:222:CYS:HG	2:A:401:HEM:CBC	1.92	0.83
1:A:254:ARG:HH21	1:A:254:ARG:CG	1.92	0.83
1:A:165:GLU:HA	1:A:166:LYS:HE3	1.61	0.81
1:A:222:CYS:SG	2:A:401:HEM:CBC	2.69	0.80
1:B:259:ASN:HB2	4:B:535:HOH:O	1.81	0.79
1:A:76:CYS:SG	2:A:400:HEM:CBC	2.70	0.79
1:A:166:LYS:HD2	4:A:659:HOH:O	1.82	0.78
1:A:166:LYS:H	1:A:166:LYS:CE	1.98	0.76
1:B:76:CYS:SG	2:B:400:HEM:CBC	2.73	0.76
1:A:76:CYS:SG	2:A:400:HEM:C3C	2.79	0.76
1:A:166:LYS:HE3	1:A:166:LYS:N	2.01	0.76

Continued on next page...

Continued from previous page...

Atom-1	Atom-2	Interatomic distance (Å)	Clash overlap (Å)
1:A:26:GLN:O	1:A:30:GLN:HG3	1.88	0.74
1:B:222:CYS:HG	2:B:401:HEM:CBC	2.02	0.72
1:A:73:CYS:SG	2:A:400:HEM:CBB	2.78	0.71
1:A:302:PHE:HB2	1:A:304:ILE:HG13	1.73	0.70
1:A:241:LYS:HG3	1:A:254:ARG:O	1.92	0.70
1:B:222:CYS:SG	2:B:401:HEM:C3C	2.80	0.68
1:A:254:ARG:HG2	1:A:254:ARG:NH2	2.07	0.68
1:B:240:GLU:HG2	1:B:255:PHE:CE1	2.28	0.68
1:B:175:ALA:O	1:B:179:GLU:HG3	1.93	0.68
1:A:222:CYS:SG	2:A:401:HEM:C3C	2.82	0.67
1:B:135:VAL:CG1	1:B:144:VAL:HG21	2.26	0.66
1:B:39:LYS:HG2	4:B:657:HOH:O	1.96	0.66
1:B:76:CYS:SG	2:B:400:HEM:HAC	2.34	0.65
1:A:246:ILE:O	1:A:246:ILE:CG2	2.39	0.65
1:A:34:LYS:HD2	4:A:599:HOH:O	1.96	0.65
1:B:114:GLN:HE22	1:B:128:LYS:HB2	1.63	0.64
1:A:324:LYS:HD3	4:A:424:HOH:O	1.97	0.64
1:A:222:CYS:SG	2:A:401:HEM:HAC	2.31	0.63
1:A:73:CYS:CB	2:A:400:HEM:HAB	2.29	0.62
1:B:206:LYS:HE2	4:B:534:HOH:O	2.00	0.62
1:B:22:ALA:N	4:B:477:HOH:O	2.34	0.60
1:A:243:ALA:O	1:A:244:GLU:CG	2.48	0.60
1:B:76:CYS:SG	2:B:400:HEM:C3C	2.88	0.60
1:A:252:LYS:HB3	1:A:292:GLU:HG3	1.84	0.59
1:A:268:ARG:O	1:A:270:PRO:HD3	2.03	0.58
1:A:289:SER:HB3	1:A:292:GLU:HB2	1.86	0.58
1:B:114:GLN:HE22	1:B:128:LYS:CB	2.15	0.58
1:A:114:GLN:HE22	1:A:129:GLY:H	1.52	0.57
1:A:23:ASP:HB2	1:A:200:LYS:NZ	2.20	0.57
1:B:138:ASN:C	4:B:460:HOH:O	2.42	0.57
1:B:253:GLY:N	4:B:573:HOH:O	2.37	0.56
1:A:246:ILE:O	1:A:247:LEU:HG	2.05	0.56
1:A:121:LYS:NZ	4:A:626:HOH:O	2.39	0.55
1:B:222:CYS:SG	2:B:401:HEM:HAC	2.37	0.54
1:A:241:LYS:HD2	1:A:256:ALA:HB2	1.89	0.54
1:A:259:ASN:ND2	4:A:503:HOH:O	2.19	0.53
1:B:56:GLY:HA3	1:B:177:ALA:O	2.09	0.53
1:A:73:CYS:CB	2:A:400:HEM:CAB	2.87	0.53
1:A:73:CYS:SG	2:A:400:HEM:C3B	2.99	0.52
1:A:107:ASN:HD21	1:A:187:THR:H	1.59	0.51
1:B:114:GLN:HE22	1:B:129:GLY:H	1.58	0.51

Continued on next page...

Continued from previous page...

Atom-1	Atom-2	Interatomic distance (Å)	Clash overlap (Å)
1:B:92:GLY:HA3	2:B:400:HEM:C3C	2.46	0.50
1:B:259:ASN:CB	4:B:535:HOH:O	2.51	0.49
1:A:165:GLU:CA	1:A:166:LYS:HE3	2.38	0.49
1:B:328:VAL:HG22	4:B:551:HOH:O	2.11	0.49
1:A:154:TYR:O	1:A:158:PHE:HD2	1.95	0.49
1:A:149:ASN:ND2	4:A:554:HOH:O	2.46	0.48
1:A:95:TRP:C	1:A:95:TRP:CD1	2.87	0.48
1:A:210:GLY:HA3	1:A:313:ALA:O	2.13	0.48
1:B:63:PRO:O	1:B:69:HIS:HA	2.15	0.46
1:B:327:LYS:HD3	4:B:537:HOH:O	2.15	0.46
1:A:203:LEU:HD22	1:A:207:GLN:HB3	1.98	0.46
1:A:254:ARG:CG	1:A:254:ARG:NH2	2.62	0.45
1:B:212:LYS:HE2	1:B:216:ASP:OD2	2.15	0.45
1:A:76:CYS:HG	2:A:400:HEM:HAC	1.73	0.45
1:B:74:ASN:OD1	1:B:79:VAL:HG22	2.17	0.45
1:B:194:GLN:OE1	1:B:197:LYS:NZ	2.40	0.45
1:B:297:MET:HG3	2:B:401:HEM:C4A	2.51	0.45
1:A:103:PRO:HD2	2:A:400:HEM:C3D	2.52	0.45
1:A:189:ASP:HB2	1:A:324:LYS:HD2	1.99	0.45
1:B:204:ASP:OD1	1:B:206:LYS:N	2.50	0.45
1:A:241:LYS:HG3	1:A:254:ARG:C	2.37	0.44
1:B:92:GLY:HA3	2:B:400:HEM:C4C	2.52	0.44
1:B:77:HIS:CD2	2:B:400:HEM:NB	2.85	0.44
1:A:262:LYS:HD2	1:A:263:ASP:OD2	2.19	0.43
1:A:324:LYS:NZ	4:A:513:HOH:O	2.45	0.43
1:A:23:ASP:OD1	1:A:23:ASP:C	2.57	0.43
1:B:167:ASP:OD1	4:B:478:HOH:O	2.21	0.43
1:B:114:GLN:NE2	1:B:128:LYS:HB2	2.31	0.42
1:B:204:ASP:OD1	1:B:204:ASP:C	2.58	0.42
1:A:166:LYS:H	1:A:166:LYS:CD	2.28	0.42
1:B:68:SER:O	1:B:69:HIS:HB2	2.19	0.42
1:B:302:PHE:HB2	1:B:304:ILE:HG13	2.01	0.42
1:A:34:LYS:HB3	1:A:34:LYS:HE2	1.77	0.42
1:A:163:PRO:O	4:A:493:HOH:O	2.22	0.42
1:B:259:ASN:OD1	1:B:259:ASN:N	2.52	0.42
1:A:144:VAL:O	1:A:148:LEU:HG	2.20	0.42
1:B:76:CYS:HG	2:B:400:HEM:CBC	2.28	0.42
1:B:128:LYS:H	1:B:128:LYS:HG2	1.71	0.42
1:A:119:ARG:HE	1:A:119:ARG:HB3	1.59	0.41
1:A:165:GLU:HA	1:A:166:LYS:CE	2.42	0.41
1:A:227:ASN:OD1	1:A:273:ARG:HD2	2.20	0.41

Continued on next page...

Continued from previous page...

Atom-1	Atom-2	Interatomic distance (Å)	Clash overlap (Å)
1:B:291:LYS:HZ2	1:B:312:GLU:HG3	1.85	0.41
1:A:51:VAL:HG21	1:A:160:LYS:HE2	2.03	0.41
1:B:114:GLN:NE2	1:B:128:LYS:CB	2.84	0.40
1:A:97:LYS:HD3	1:A:97:LYS:HA	1.86	0.40
1:B:107:ASN:HD21	1:B:187:THR:H	1.69	0.40

All (4) symmetry-related close contacts are listed below. The label for Atom-2 includes the symmetry operator and encoded unit-cell translations to be applied.

Atom-1	Atom-2	Interatomic distance (Å)	Clash overlap (Å)
4:A:669:HOH:O	4:B:414:HOH:O[1_655]	1.76	0.44
4:A:669:HOH:O	4:B:416:HOH:O[1_655]	1.94	0.26
4:A:463:HOH:O	4:B:690:HOH:O[1_556]	2.15	0.05
4:A:462:HOH:O	4:B:380:HOH:O[1_556]	2.16	0.04

5.3 Torsion angles [i](#)

5.3.1 Protein backbone [i](#)

In the following table, the Percentiles column shows the percent Ramachandran outliers of the chain as a percentile score with respect to all X-ray entries followed by that with respect to entries of similar resolution.

The Analysed column shows the number of residues for which the backbone conformation was analysed, and the total number of residues.

Mol	Chain	Analysed	Favoured	Allowed	Outliers	Percentiles	
1	A	322/345 (93%)	304 (94%)	13 (4%)	5 (2%)	9	4
1	B	309/345 (90%)	294 (95%)	15 (5%)	0	100	100
All	All	631/690 (91%)	598 (95%)	28 (4%)	5 (1%)	19	13

All (5) Ramachandran outliers are listed below:

Mol	Chain	Res	Type
1	A	244	GLU
1	A	242	PRO
1	A	253	GLY
1	A	129	GLY
1	A	262	LYS

5.3.2 Protein sidechains [i](#)

In the following table, the Percentiles column shows the percent sidechain outliers of the chain as a percentile score with respect to all X-ray entries followed by that with respect to entries of similar resolution.

The Analysed column shows the number of residues for which the sidechain conformation was analysed, and the total number of residues.

Mol	Chain	Analysed	Rotameric	Outliers	Percentiles	
1	A	260/276 (94%)	245 (94%)	15 (6%)	20	15
1	B	251/276 (91%)	244 (97%)	7 (3%)	43	44
All	All	511/552 (93%)	489 (96%)	22 (4%)	29	26

All (22) residues with a non-rotameric sidechain are listed below:

Mol	Chain	Res	Type
1	A	34	LYS
1	A	43	LEU
1	A	44	LYS
1	A	119	ARG
1	A	166	LYS
1	A	239	VAL
1	A	241	LYS
1	A	244	GLU
1	A	252	LYS
1	A	254	ARG
1	A	262	LYS
1	A	268	ARG
1	A	324	LYS
1	A	341	PRO
1	A	345	LEU
1	B	39	LYS
1	B	128	LYS
1	B	137	MET
1	B	227	ASN
1	B	291	LYS
1	B	308	ASP
1	B	312	GLU

Sometimes sidechains can be flipped to improve hydrogen bonding and reduce clashes. All (5) such sidechains are listed below:

Mol	Chain	Res	Type
1	A	107	ASN
1	A	114	GLN
1	A	149	ASN
1	B	107	ASN
1	B	114	GLN

5.3.3 RNA [i](#)

There are no RNA molecules in this entry.

5.4 Non-standard residues in protein, DNA, RNA chains [i](#)

There are no non-standard protein/DNA/RNA residues in this entry.

5.5 Carbohydrates [i](#)

There are no monosaccharides in this entry.

5.6 Ligand geometry [i](#)

Of 6 ligands modelled in this entry, 2 are monoatomic - leaving 4 for Mogul analysis.

In the following table, the Counts columns list the number of bonds (or angles) for which Mogul statistics could be retrieved, the number of bonds (or angles) that are observed in the model and the number of bonds (or angles) that are defined in the Chemical Component Dictionary. The Link column lists molecule types, if any, to which the group is linked. The Z score for a bond length (or angle) is the number of standard deviations the observed value is removed from the expected value. A bond length (or angle) with $|Z| > 2$ is considered an outlier worth inspection. RMSZ is the root-mean-square of all Z scores of the bond lengths (or angles).

Mol	Type	Chain	Res	Link	Bond lengths			Bond angles		
					Counts	RMSZ	# $ Z > 2$	Counts	RMSZ	# $ Z > 2$
2	HEM	A	400	1	41,50,50	1.93	11 (26%)	45,82,82	1.93	15 (33%)
2	HEM	A	401	1	41,50,50	1.81	7 (17%)	45,82,82	2.25	16 (35%)
2	HEM	B	400	1	41,50,50	2.18	10 (24%)	45,82,82	2.20	16 (35%)
2	HEM	B	401	1	41,50,50	2.21	10 (24%)	45,82,82	2.13	14 (31%)

In the following table, the Chirals column lists the number of chiral outliers, the number of chiral centers analysed, the number of these observed in the model and the number defined in the Chemical Component Dictionary. Similar counts are reported in the Torsion and Rings columns. '-' means no outliers of that kind were identified.

Mol	Type	Chain	Res	Link	Chirals	Torsions	Rings
2	HEM	A	400	1	-	4/12/54/54	-
2	HEM	A	401	1	-	3/12/54/54	-
2	HEM	B	400	1	-	4/12/54/54	-
2	HEM	B	401	1	-	1/12/54/54	-

All (38) bond length outliers are listed below:

Mol	Chain	Res	Type	Atoms	Z	Observed(Å)	Ideal(Å)
2	B	401	HEM	C3D-C2D	7.70	1.53	1.36
2	B	400	HEM	C3D-C2D	7.23	1.52	1.36
2	A	401	HEM	C3D-C2D	6.53	1.50	1.36
2	A	400	HEM	C3D-C2D	5.67	1.48	1.36
2	A	400	HEM	C3C-CAC	5.59	1.59	1.47
2	B	400	HEM	C3C-CAC	5.19	1.58	1.47
2	B	401	HEM	C3C-CAC	4.49	1.57	1.47
2	B	401	HEM	CAA-C2A	4.21	1.58	1.52
2	B	400	HEM	CAB-C3B	3.93	1.58	1.47
2	B	400	HEM	CAA-C2A	3.89	1.57	1.52
2	A	400	HEM	CAB-C3B	3.80	1.57	1.47
2	B	400	HEM	CMA-C3A	3.74	1.59	1.51
2	A	401	HEM	C3C-CAC	3.55	1.55	1.47
2	B	401	HEM	FE-ND	3.54	2.14	1.96
2	B	401	HEM	C4A-NA	3.41	1.43	1.36
2	A	401	HEM	FE-NB	3.36	2.13	1.96
2	A	401	HEM	CAB-C3B	3.35	1.56	1.47
2	B	400	HEM	C1B-NB	-3.31	1.34	1.40
2	B	401	HEM	CAB-C3B	3.28	1.56	1.47
2	A	400	HEM	C3C-C2C	-3.22	1.35	1.40
2	A	401	HEM	CAA-C2A	2.98	1.56	1.52
2	B	400	HEM	C3C-C2C	-2.98	1.36	1.40
2	A	400	HEM	CMD-C2D	2.95	1.57	1.50
2	B	401	HEM	CMC-C2C	2.68	1.57	1.51
2	B	401	HEM	C4D-ND	-2.61	1.35	1.40
2	A	400	HEM	CAA-C2A	2.51	1.55	1.52
2	A	400	HEM	O1D-CGD	2.27	1.29	1.22
2	A	401	HEM	CMA-C3A	2.26	1.56	1.51
2	A	400	HEM	CBB-CAB	2.21	1.41	1.30
2	A	400	HEM	CMB-C2B	2.20	1.55	1.50
2	B	400	HEM	FE-NB	2.18	2.07	1.96
2	B	401	HEM	C4D-C3D	2.15	1.48	1.45
2	A	400	HEM	C2A-C3A	-2.08	1.31	1.37
2	A	401	HEM	C3C-C2C	-2.07	1.37	1.40
2	B	400	HEM	CHA-C4D	2.04	1.40	1.35

Continued on next page...

Continued from previous page...

Mol	Chain	Res	Type	Atoms	Z	Observed(Å)	Ideal(Å)
2	B	400	HEM	C1D-ND	2.03	1.43	1.38
2	B	401	HEM	C3C-C2C	-2.02	1.37	1.40
2	A	400	HEM	C1B-NB	2.02	1.43	1.40

All (61) bond angle outliers are listed below:

Mol	Chain	Res	Type	Atoms	Z	Observed(°)	Ideal(°)
2	B	401	HEM	C4D-ND-C1D	6.18	111.46	105.07
2	B	400	HEM	C4D-ND-C1D	6.11	111.38	105.07
2	A	401	HEM	C4D-ND-C1D	5.40	110.65	105.07
2	A	401	HEM	CBA-CAA-C2A	-5.09	103.93	112.62
2	A	400	HEM	C4D-ND-C1D	4.92	110.15	105.07
2	B	401	HEM	CMA-C3A-C4A	-4.86	121.00	128.46
2	A	400	HEM	CHD-C1D-ND	4.03	128.80	124.43
2	B	401	HEM	C4C-CHD-C1D	4.02	127.86	122.56
2	B	400	HEM	C3B-C2B-C1B	3.99	109.45	106.49
2	A	401	HEM	C1B-NB-C4B	3.90	109.11	105.07
2	B	400	HEM	CMD-C2D-C1D	3.90	130.97	125.04
2	A	400	HEM	CMA-C3A-C4A	-3.80	122.62	128.46
2	A	401	HEM	CMA-C3A-C4A	-3.71	122.76	128.46
2	A	400	HEM	C4A-C3A-C2A	3.66	109.54	107.00
2	B	400	HEM	CBD-CAD-C3D	-3.59	102.66	112.63
2	A	400	HEM	CMD-C2D-C1D	3.55	130.44	125.04
2	A	401	HEM	C3B-C2B-C1B	3.54	109.11	106.49
2	A	401	HEM	C2C-C3C-C4C	3.50	109.34	106.90
2	B	400	HEM	CHA-C4D-ND	3.43	128.61	124.38
2	B	401	HEM	C1B-NB-C4B	3.37	108.56	105.07
2	A	401	HEM	CMD-C2D-C1D	3.33	130.11	125.04
2	A	400	HEM	CBD-CAD-C3D	-3.25	103.60	112.63
2	A	401	HEM	C4C-CHD-C1D	3.24	126.83	122.56
2	A	401	HEM	CAD-CBD-CGD	-3.23	106.65	113.60
2	B	400	HEM	C1B-NB-C4B	3.21	108.39	105.07
2	A	401	HEM	CMC-C2C-C3C	3.19	130.64	124.68
2	B	400	HEM	C3D-C4D-ND	-3.17	106.63	110.17
2	B	401	HEM	C4A-C3A-C2A	3.06	109.12	107.00
2	B	400	HEM	CAA-CBA-CGA	-3.02	105.28	113.76
2	B	401	HEM	CMC-C2C-C3C	3.00	130.29	124.68
2	A	401	HEM	C2B-C1B-NB	-2.98	106.30	109.84
2	B	401	HEM	CAD-C3D-C4D	2.97	129.84	124.66
2	B	400	HEM	CMA-C3A-C4A	-2.96	123.91	128.46
2	B	401	HEM	CMB-C2B-C1B	-2.93	120.58	125.04
2	B	400	HEM	CAD-C3D-C4D	2.86	129.66	124.66

Continued on next page...

Continued from previous page...

Mol	Chain	Res	Type	Atoms	Z	Observed(°)	Ideal(°)
2	B	401	HEM	CBA-CAA-C2A	-2.85	107.76	112.62
2	A	400	HEM	CAD-CBD-CGD	-2.80	107.58	113.60
2	B	400	HEM	C2C-C3C-C4C	2.75	108.82	106.90
2	A	400	HEM	CHA-C4D-ND	2.73	127.75	124.38
2	A	401	HEM	CMB-C2B-C1B	-2.66	120.99	125.04
2	B	400	HEM	CAD-C3D-C2D	-2.65	122.93	127.88
2	B	400	HEM	CHC-C4B-NB	2.64	127.30	124.43
2	B	401	HEM	CMA-C3A-C2A	2.61	129.87	124.94
2	B	400	HEM	CBB-CAB-C3B	-2.61	114.64	127.62
2	B	401	HEM	CHD-C1D-ND	2.59	127.25	124.43
2	B	400	HEM	CBA-CAA-C2A	-2.53	108.30	112.62
2	B	400	HEM	C2B-C1B-NB	-2.52	106.85	109.84
2	A	400	HEM	C4B-C3B-C2B	2.44	109.06	107.11
2	A	400	HEM	C3D-C4D-ND	-2.38	107.52	110.17
2	A	401	HEM	O1A-CGA-CBA	-2.36	115.48	123.08
2	A	401	HEM	CBB-CAB-C3B	-2.36	115.89	127.62
2	A	401	HEM	O2D-CGD-CBD	2.34	121.55	114.03
2	A	401	HEM	CMA-C3A-C2A	2.28	129.24	124.94
2	A	400	HEM	CAD-C3D-C2D	-2.26	123.67	127.88
2	A	400	HEM	CBB-CAB-C3B	-2.26	116.39	127.62
2	B	401	HEM	C4B-CHC-C1C	2.21	125.47	122.56
2	B	401	HEM	CBB-CAB-C3B	-2.20	116.66	127.62
2	A	400	HEM	CAD-C3D-C4D	2.20	128.50	124.66
2	B	401	HEM	O2A-CGA-CBA	2.17	120.99	114.03
2	A	400	HEM	CMC-C2C-C3C	2.06	128.53	124.68
2	A	400	HEM	CHD-C1D-C2D	-2.02	121.82	124.98

There are no chirality outliers.

All (12) torsion outliers are listed below:

Mol	Chain	Res	Type	Atoms
2	A	400	HEM	C2B-C3B-CAB-CBB
2	A	400	HEM	C4B-C3B-CAB-CBB
2	B	400	HEM	C2B-C3B-CAB-CBB
2	B	400	HEM	C4B-C3B-CAB-CBB
2	A	401	HEM	C2B-C3B-CAB-CBB
2	A	401	HEM	C4B-C3B-CAB-CBB
2	A	400	HEM	CAD-CBD-CGD-O2D
2	A	400	HEM	CAD-CBD-CGD-O1D
2	B	400	HEM	CAD-CBD-CGD-O2D
2	B	400	HEM	CAD-CBD-CGD-O1D
2	B	401	HEM	C4B-C3B-CAB-CBB

Continued on next page...

Continued from previous page...

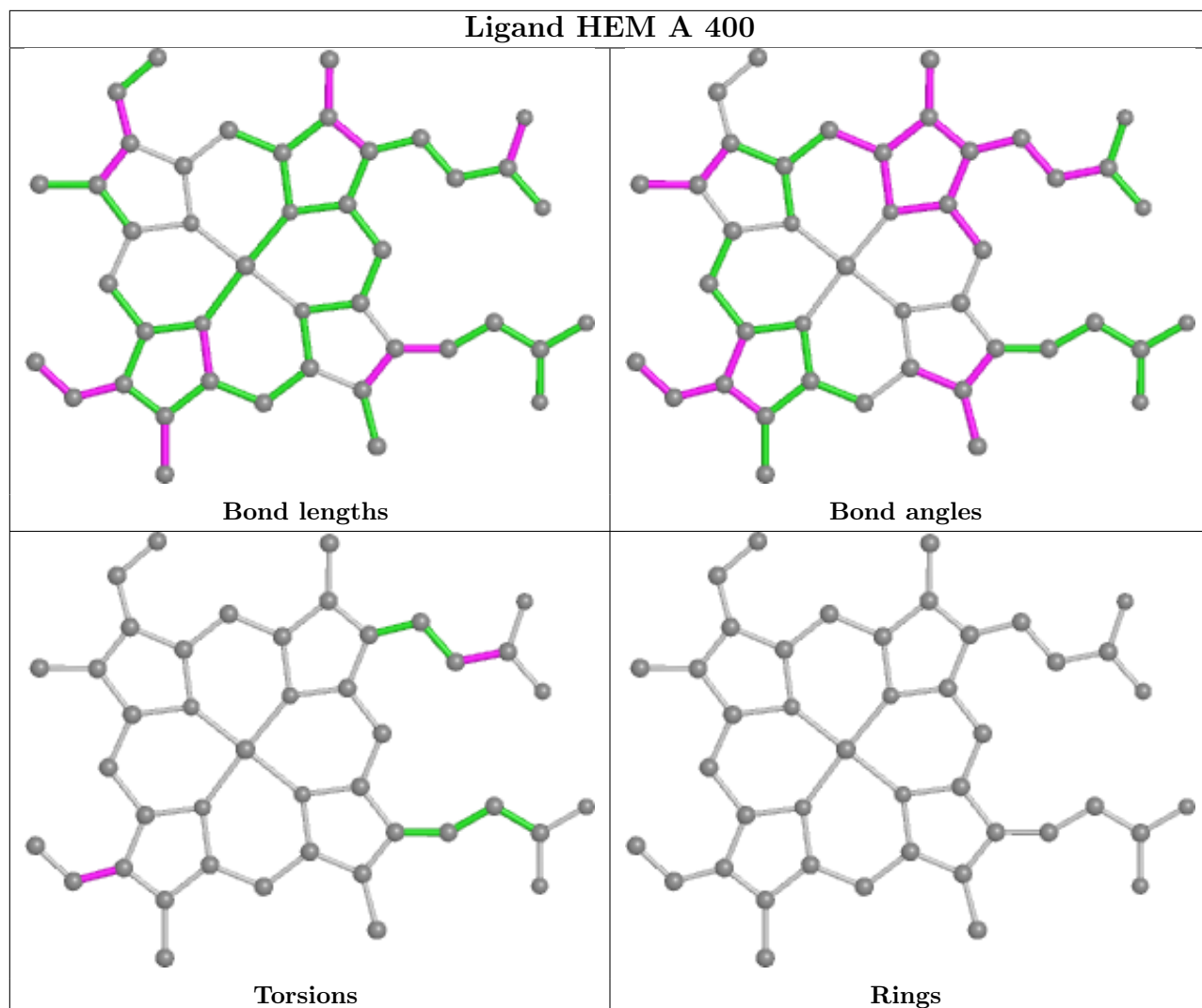
Mol	Chain	Res	Type	Atoms
2	A	401	HEM	CAA-CBA-CGA-O2A

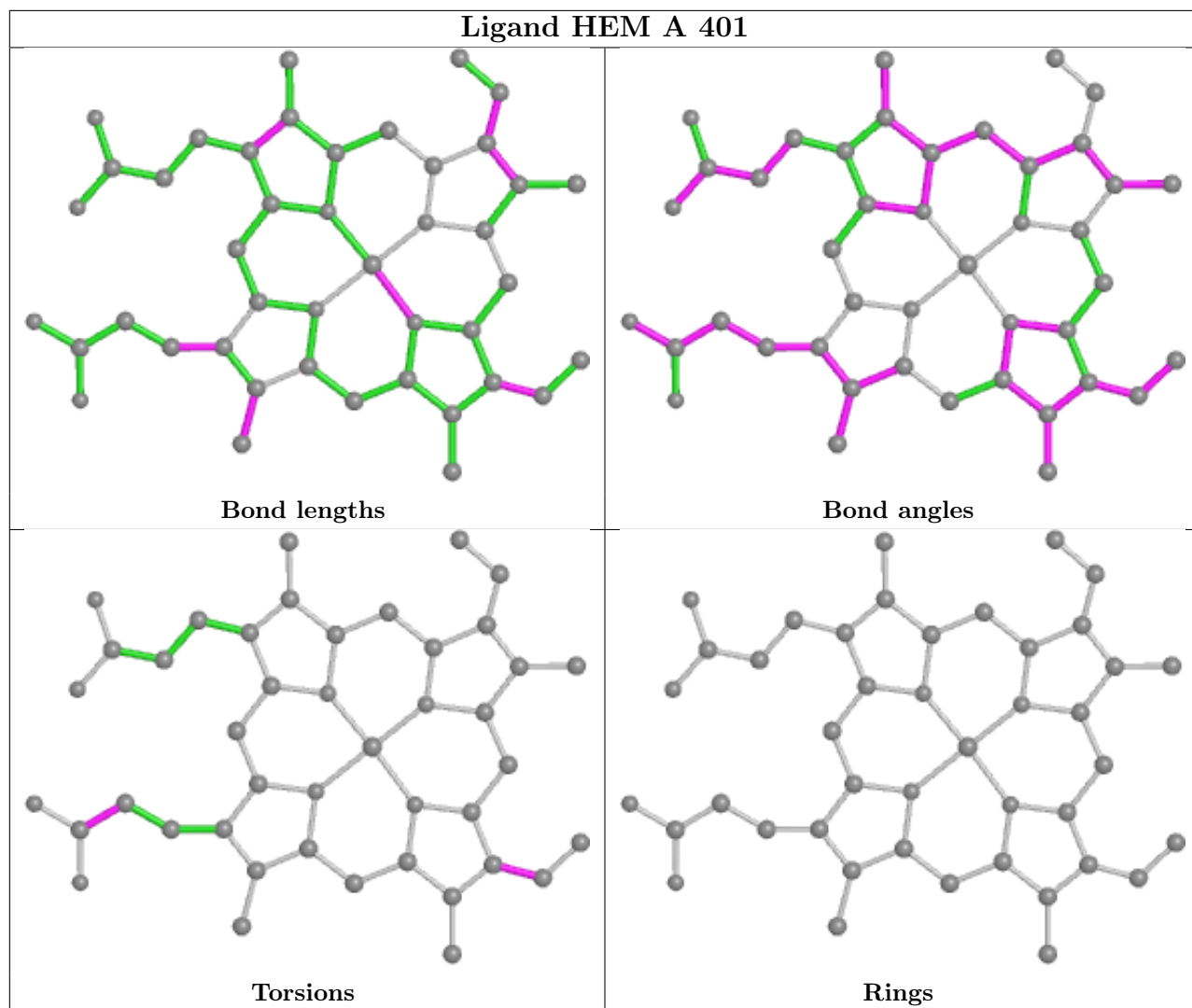
There are no ring outliers.

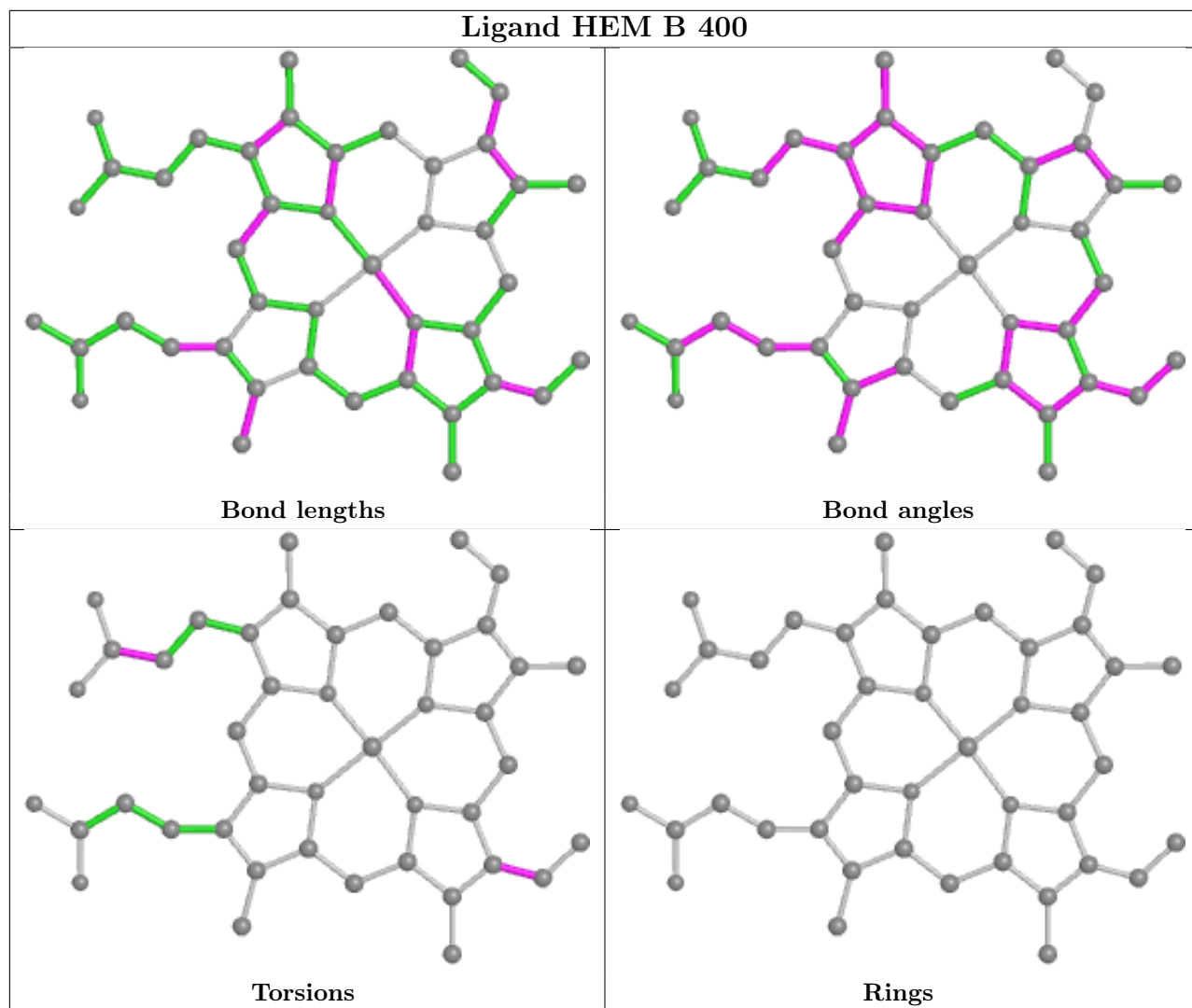
4 monomers are involved in 34 short contacts:

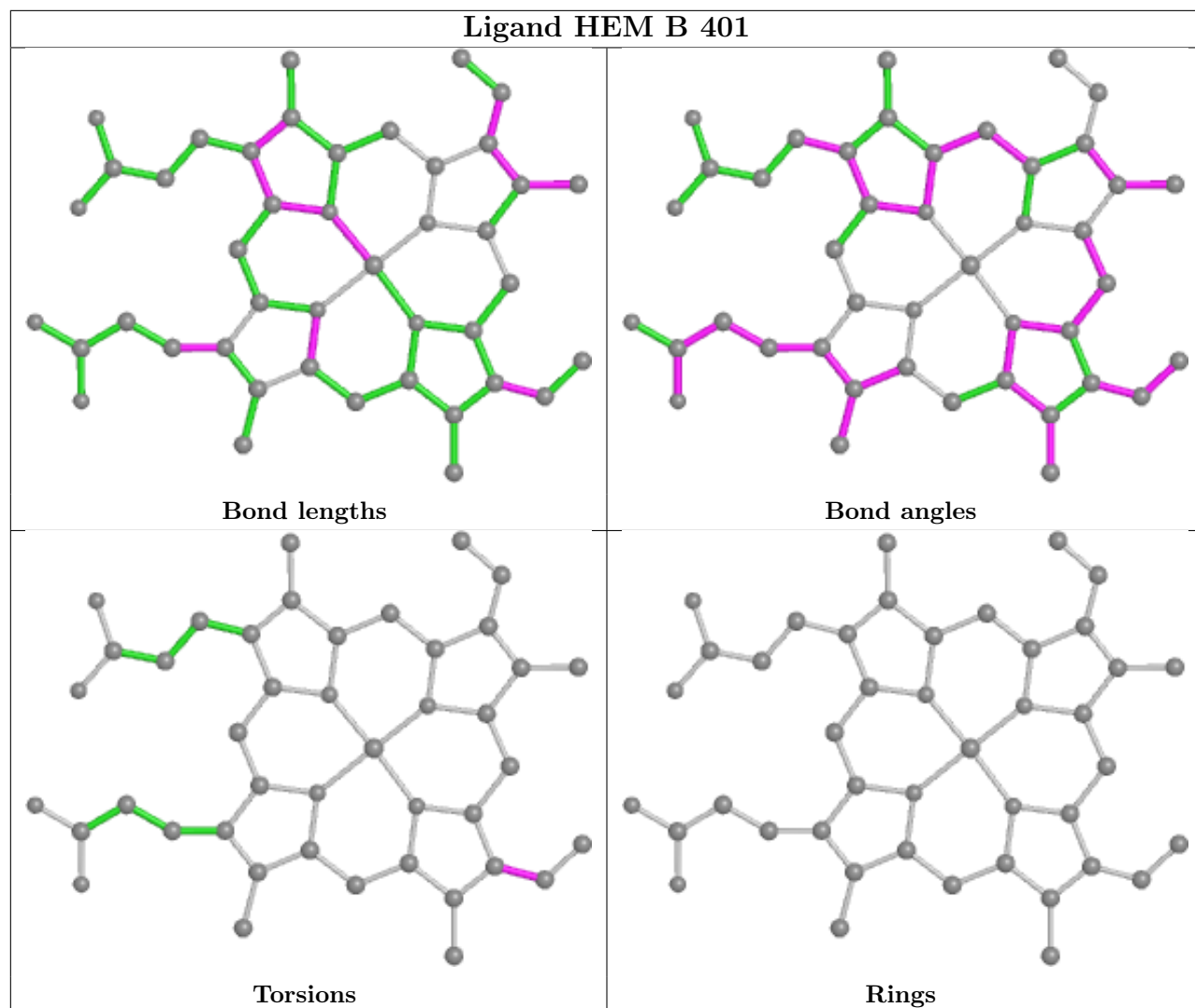
Mol	Chain	Res	Type	Clashes	Symm-Clashes
2	A	400	HEM	12	0
2	A	401	HEM	6	0
2	B	400	HEM	9	0
2	B	401	HEM	7	0

The following is a two-dimensional graphical depiction of Mogul quality analysis of bond lengths, bond angles, torsion angles, and ring geometry for all instances of the Ligand of Interest. In addition, ligands with molecular weight > 250 and outliers as shown on the validation Tables will also be included. For torsion angles, if less than 5% of the Mogul distribution of torsion angles is within 10 degrees of the torsion angle in question, then that torsion angle is considered an outlier. Any bond that is central to one or more torsion angles identified as an outlier by Mogul will be highlighted in the graph. For rings, the root-mean-square deviation (RMSD) between the ring in question and similar rings identified by Mogul is calculated over all ring torsion angles. If the average RMSD is greater than 60 degrees and the minimal RMSD between the ring in question and any Mogul-identified rings is also greater than 60 degrees, then that ring is considered an outlier. The outliers are highlighted in purple. The color gray indicates Mogul did not find sufficient equivalents in the CSD to analyse the geometry.









5.7 Other polymers [i](#)

There are no such residues in this entry.

5.8 Polymer linkage issues [i](#)

There are no chain breaks in this entry.

6 Fit of model and data [i](#)

6.1 Protein, DNA and RNA chains [i](#)

In the following table, the column labelled ‘#RSRZ> 2’ contains the number (and percentage) of RSRZ outliers, followed by percent RSRZ outliers for the chain as percentile scores relative to all X-ray entries and entries of similar resolution. The OWAB column contains the minimum, median, 95th percentile and maximum values of the occupancy-weighted average B-factor per residue. The column labelled ‘Q< 0.9’ lists the number of (and percentage) of residues with an average occupancy less than 0.9.

Mol	Chain	Analysed	<RSRZ>	#RSRZ>2	OWAB(Å ²)	Q<0.9
1	A	324/345 (93%)	-0.27	7 (2%) 62 60	12, 21, 44, 66	0
1	B	313/345 (90%)	-0.35	2 (0%) 89 88	12, 20, 35, 52	0
All	All	637/690 (92%)	-0.31	9 (1%) 75 74	12, 21, 40, 66	0

All (9) RSRZ outliers are listed below:

Mol	Chain	Res	Type	RSRZ
1	B	345	LEU	7.4
1	A	244	GLU	3.6
1	A	345	LEU	3.6
1	A	246	ILE	3.2
1	A	245	ASN	3.2
1	A	243	ALA	3.1
1	B	253	GLY	2.3
1	A	198	GLY	2.2
1	A	262	LYS	2.1

6.2 Non-standard residues in protein, DNA, RNA chains [i](#)

There are no non-standard protein/DNA/RNA residues in this entry.

6.3 Carbohydrates [i](#)

There are no monosaccharides in this entry.

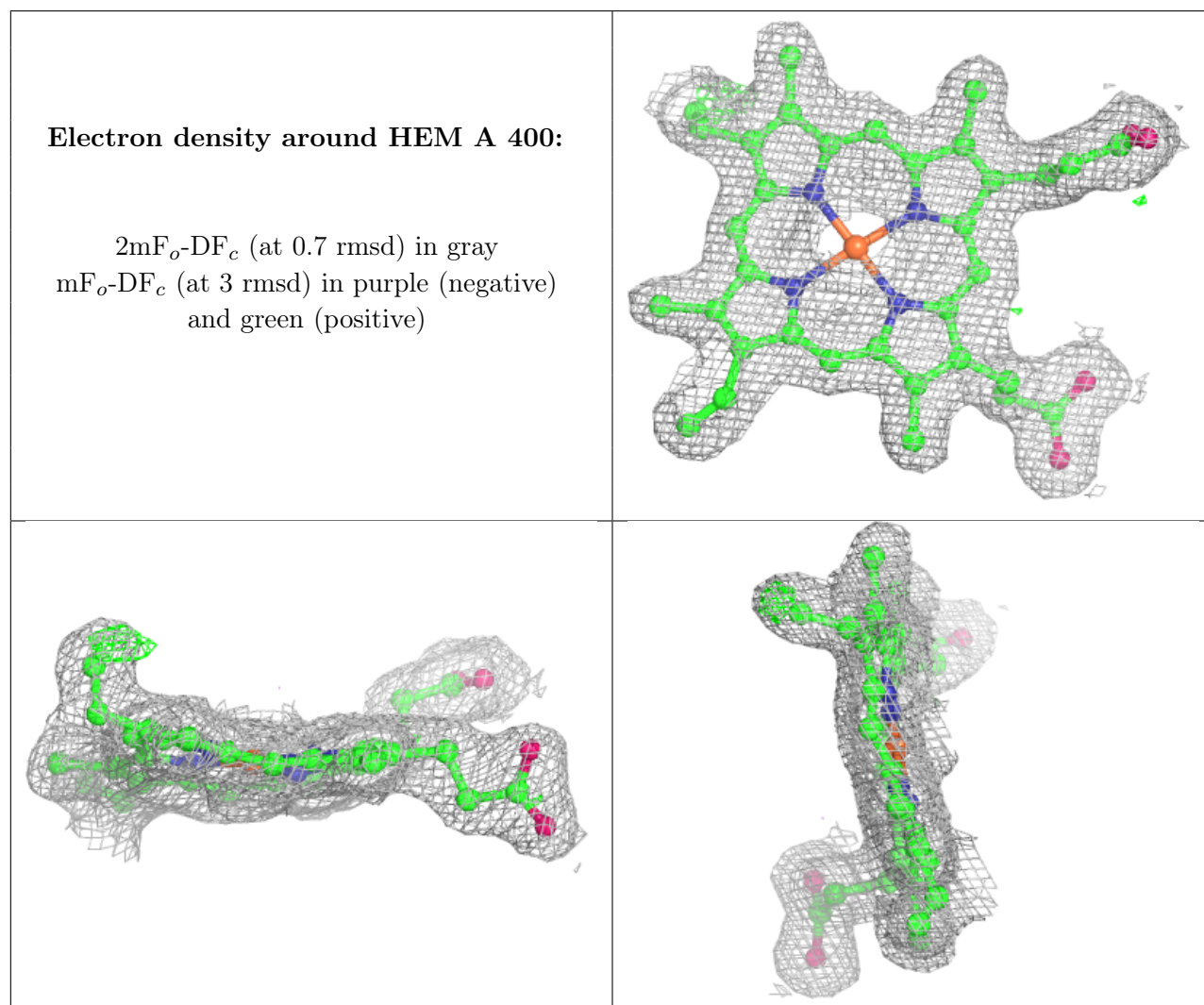
6.4 Ligands [i](#)

In the following table, the Atoms column lists the number of modelled atoms in the group and the number defined in the chemical component dictionary. The B-factors column lists the minimum,

median, 95th percentile and maximum values of B factors of atoms in the group. The column labelled 'Q < 0.9' lists the number of atoms with occupancy less than 0.9.

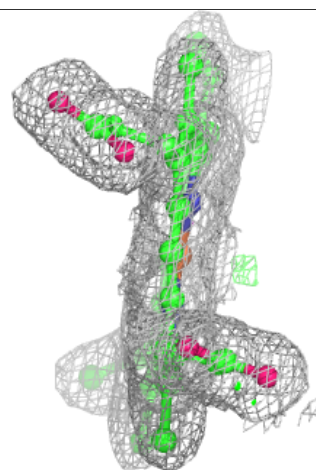
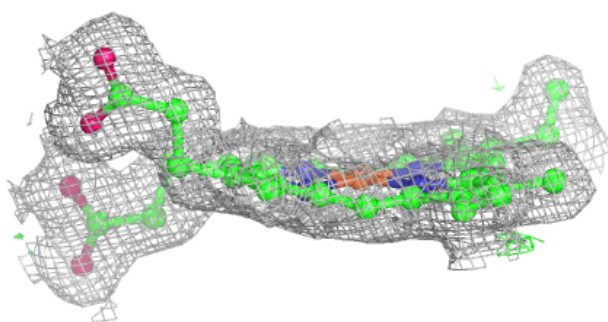
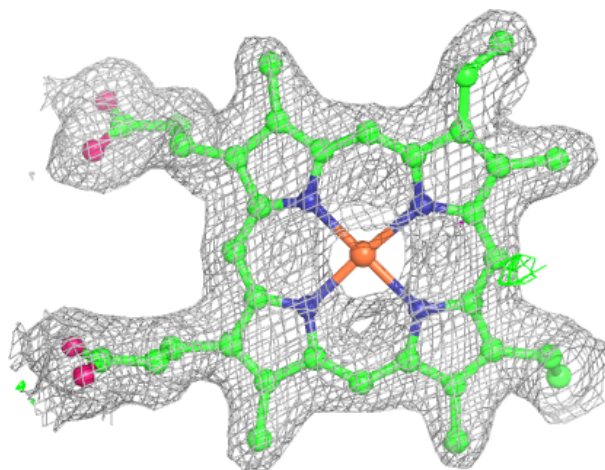
Mol	Type	Chain	Res	Atoms	RSCC	RSR	B-factors(Å ²)	Q<0.9
2	HEM	A	400	43/43	0.98	0.12	8,14,19,28	0
2	HEM	A	401	43/43	0.98	0.10	12,19,23,24	0
2	HEM	B	400	43/43	0.98	0.11	4,12,19,26	0
2	HEM	B	401	43/43	0.98	0.10	11,18,21,21	0
3	CA	A	402	1/1	1.00	0.10	17,17,17,17	0
3	CA	B	402	1/1	1.00	0.11	18,18,18,18	0

The following is a graphical depiction of the model fit to experimental electron density of all instances of the Ligand of Interest. In addition, ligands with molecular weight > 250 and outliers as shown on the geometry validation Tables will also be included. Each fit is shown from different orientation to approximate a three-dimensional view.



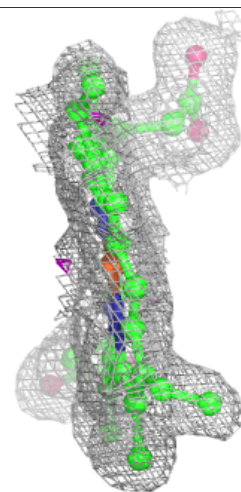
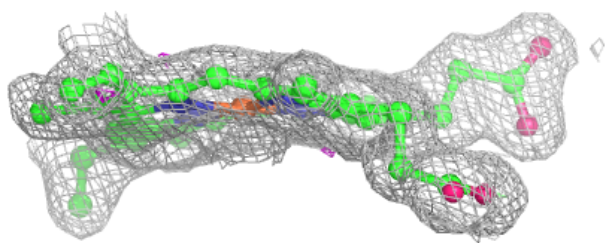
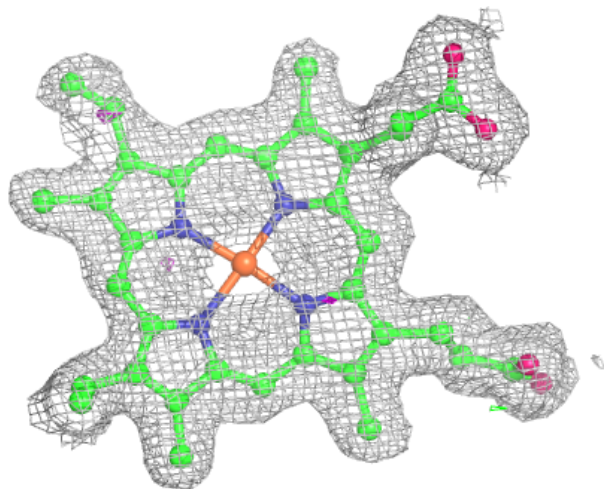
Electron density around HEM A 401:

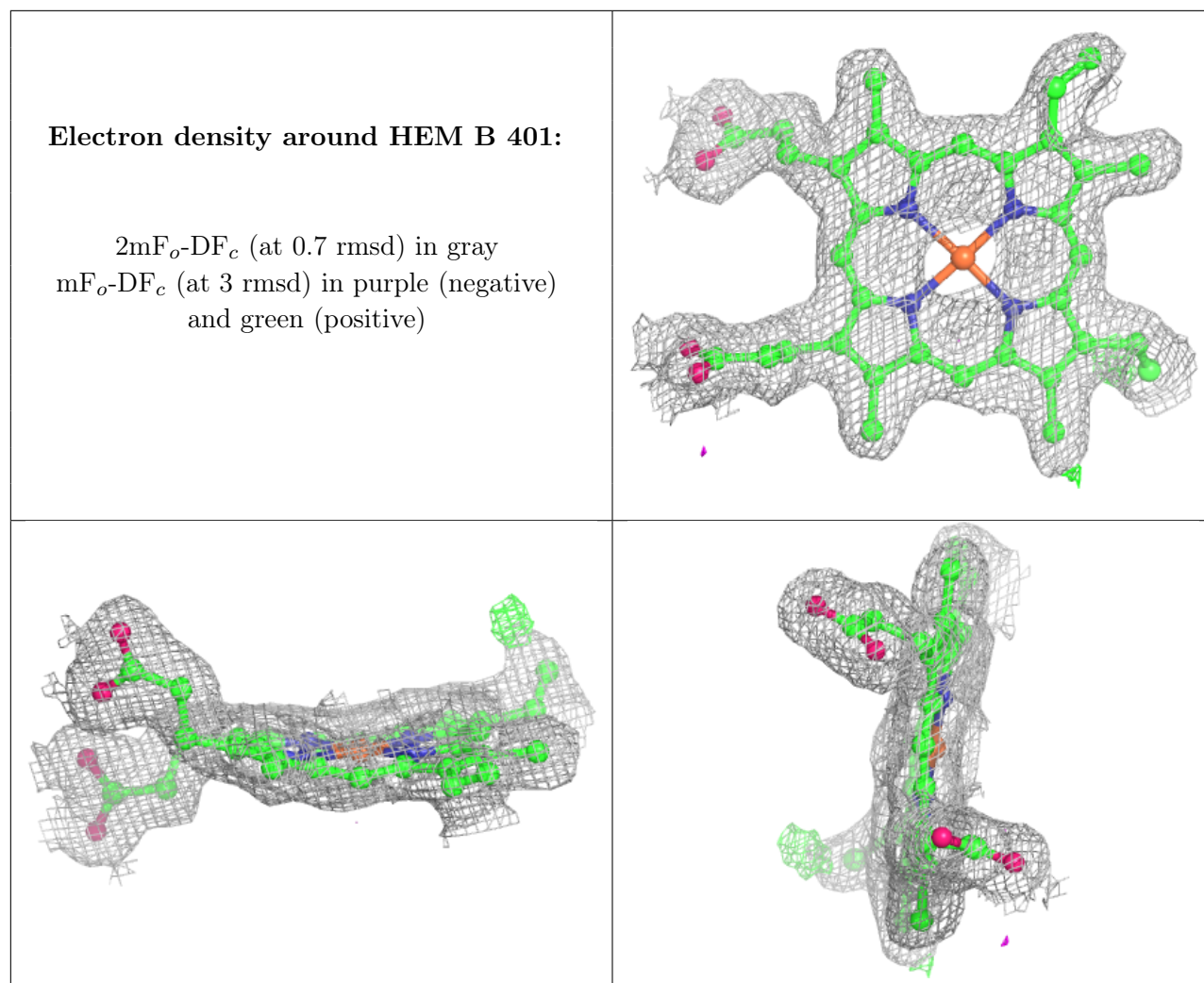
$2mF_o-DF_c$ (at 0.7 rmsd) in gray
 mF_o-DF_c (at 3 rmsd) in purple (negative)
and green (positive)



Electron density around HEM B 400:

$2mF_o-DF_c$ (at 0.7 rmsd) in gray
 mF_o-DF_c (at 3 rmsd) in purple (negative)
and green (positive)





6.5 Other polymers [i](#)

There are no such residues in this entry.