



Full wwPDB X-ray Structure Validation Report ⓘ

Oct 25, 2023 – 12:39 AM EDT

PDB ID : 3EHB
Title : A D-Pathway Mutation Decouples the Paracoccus Denitrificans Cytochrome c Oxidase by Altering the side chain orientation of a distant, conserved Glutamate
Authors : Koepke, J.; Mueller, H.; Peng, G.
Deposited on : 2008-09-12
Resolution : 2.32 Å(reported)

This is a Full wwPDB X-ray Structure Validation Report for a publicly released PDB entry.

We welcome your comments at validation@mail.wwpdb.org

A user guide is available at

<https://www.wwpdb.org/validation/2017/XrayValidationReportHelp>

with specific help available everywhere you see the ⓘ symbol.

The types of validation reports are described at

<http://www.wwpdb.org/validation/2017/FAQs#types>.

The following versions of software and data (see [references ⓘ](#)) were used in the production of this report:

MolProbity : 4.02b-467
Mogul : 1.8.5 (274361), CSD as541be (2020)
Xtriage (Phenix) : 1.13
EDS : 2.36
buster-report : 1.1.7 (2018)
Percentile statistics : 20191225.v01 (using entries in the PDB archive December 25th 2019)
Refmac : 5.8.0158
CCP4 : 7.0.044 (Gargrove)
Ideal geometry (proteins) : Engh & Huber (2001)
Ideal geometry (DNA, RNA) : Parkinson et al. (1996)
Validation Pipeline (wwPDB-VP) : 2.36

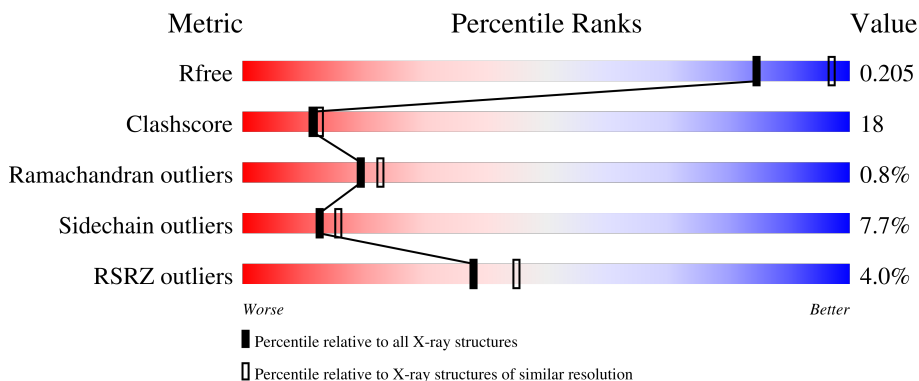
1 Overall quality at a glance

The following experimental techniques were used to determine the structure:

X-RAY DIFFRACTION

The reported resolution of this entry is 2.32 Å.

Percentile scores (ranging between 0-100) for global validation metrics of the entry are shown in the following graphic. The table shows the number of entries on which the scores are based.



Metric	Whole archive (#Entries)	Similar resolution (#Entries, resolution range(Å))
R_{free}	130704	5974 (2.34-2.30)
Clashscore	141614	6604 (2.34-2.30)
Ramachandran outliers	138981	6523 (2.34-2.30)
Sidechain outliers	138945	6523 (2.34-2.30)
RSRZ outliers	127900	5855 (2.34-2.30)

The table below summarises the geometric issues observed across the polymeric chains and their fit to the electron density. The red, orange, yellow and green segments of the lower bar indicate the fraction of residues that contain outliers for ≥ 3 , 2, 1 and 0 types of geometric quality criteria respectively. A grey segment represents the fraction of residues that are not modelled. The numeric value for each fraction is indicated below the corresponding segment, with a dot representing fractions $\leq 5\%$. The upper red bar (where present) indicates the fraction of residues that have poor fit to the electron density. The numeric value is given above the bar.

Mol	Chain	Length	Quality of chain
1	A	558	 5% 62% 28% 5% 5%
2	B	298	 % 59% 22% 15%
3	C	127	 7% 64% 25% 5% 6%
4	D	120	 % 64% 22% 9%

The following table lists non-polymeric compounds, carbohydrate monomers and non-standard residues in protein, DNA, RNA chains that are outliers for geometric or electron-density-fit criteria:

Mol	Type	Chain	Res	Chirality	Geometry	Clashes	Electron density
10	LMT	A	571	-	-	-	X
10	LMT	A	572	-	-	-	X
10	LMT	A	573	-	-	-	X
10	LMT	A	574	-	-	-	X
10	LMT	A	575	-	-	-	X
10	LMT	B	279	-	-	-	X
10	LMT	D	121	-	-	-	X
5	HEA	A	559	X	-	-	-
5	HEA	A	560	X	-	-	-
9	LDA	A	564	-	-	-	X
9	LDA	B	276	-	-	-	X

2 Entry composition [i](#)

There are 12 unique types of molecules in this entry. The entry contains 9036 atoms, of which 0 are hydrogens and 0 are deuteriums.

In the tables below, the ZeroOcc column contains the number of atoms modelled with zero occupancy, the AltConf column contains the number of residues with at least one atom in alternate conformation and the Trace column contains the number of residues modelled with at most 2 atoms.

- Molecule 1 is a protein called Cytochrome c oxidase subunit 1-beta.

Mol	Chain	Residues	Atoms					ZeroOcc	AltConf	Trace
			Total	C	N	O	S			
1	A	530	4199	2818	656	692	33	0	3	1

There is a discrepancy between the modelled and reference sequences:

Chain	Residue	Modelled	Actual	Comment	Reference
A	131	ASP	ASN	engineered mutation	UNP P98002

- Molecule 2 is a protein called Cytochrome c oxidase subunit 2.

Mol	Chain	Residues	Atoms					ZeroOcc	AltConf	Trace
			Total	C	N	O	S			
2	B	253	1982	1298	320	356	8	0	1	1

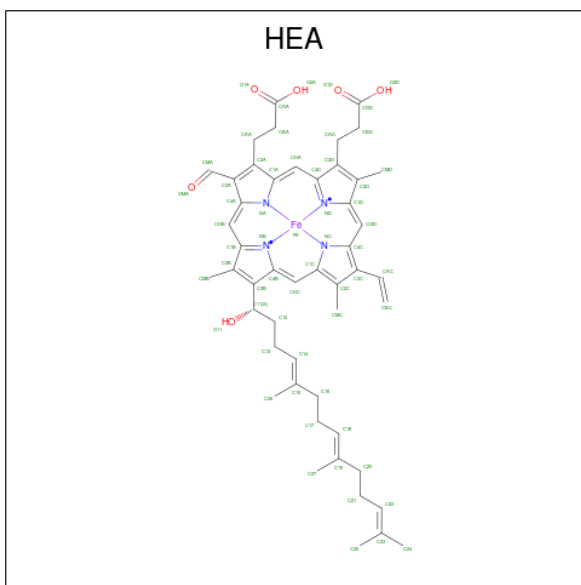
- Molecule 3 is a protein called FV fragment Chain H.

Mol	Chain	Residues	Atoms					ZeroOcc	AltConf	Trace
			Total	C	N	O	S			
3	C	119	941	591	159	185	6	0	2	1

- Molecule 4 is a protein called FV fragment Chain L.

Mol	Chain	Residues	Atoms					ZeroOcc	AltConf	Trace
			Total	C	N	O	S			
4	D	109	832	530	136	164	2	0	0	1

- Molecule 5 is HEME-A (three-letter code: HEA) (formula: C₄₉H₅₆FeN₄O₆).



Mol	Chain	Residues	Atoms				ZeroOcc	AltConf	
5	A	1	Total	C	Fe	N	O	0	0
			60	49	1	4	6		
5	A	1	Total	C	Fe	N	O	0	0
			60	49	1	4	6		

- Molecule 6 is COPPER (II) ION (three-letter code: CU) (formula: Cu).

Mol	Chain	Residues	Atoms		ZeroOcc	AltConf
6	A	1	Total	Cu	0	0
			1	1		
6	B	2	Total	Cu	0	0
			2	2		

- Molecule 7 is MAGNESIUM ION (three-letter code: MG) (formula: Mg).

Mol	Chain	Residues	Atoms		ZeroOcc	AltConf
7	A	1	Total	Mg	0	0
			1	1		

- Molecule 8 is CALCIUM ION (three-letter code: CA) (formula: Ca).

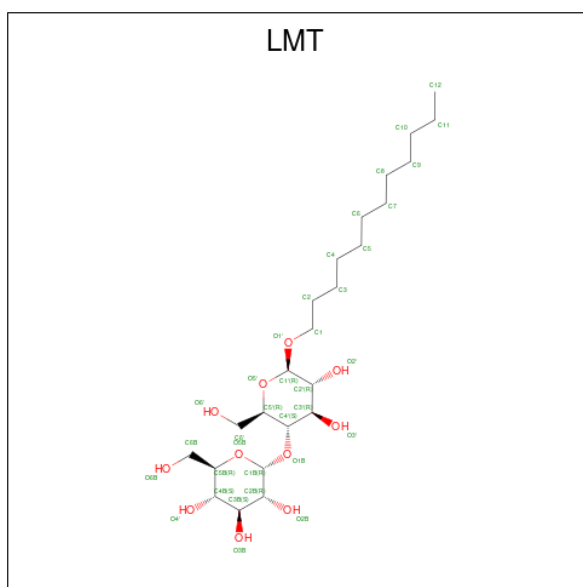
Mol	Chain	Residues	Atoms		ZeroOcc	AltConf
8	A	1	Total	Ca	0	0
			1	1		

- Molecule 9 is LAURYL DIMETHYLAMINE-N-OXIDE (three-letter code: LDA) (formula: C₁₄H₃₁NO).



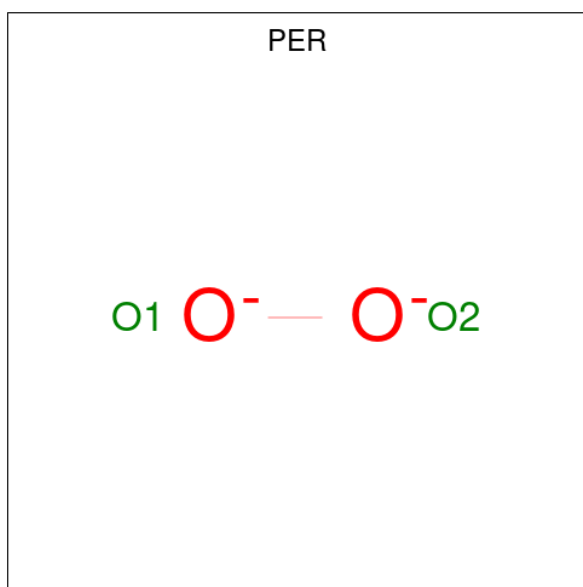
Mol	Chain	Residues	Atoms				ZeroOcc	AltConf
			Total	C	N	O		
9	A	1	Total 16	C 14	N 1	O 1	0	0
9	A	1	Total 16	C 14	N 1	O 1	0	0
9	A	1	Total 16	C 14	N 1	O 1	0	0
9	A	1	Total 16	C 14	N 1	O 1	0	0
9	B	1	Total 16	C 14	N 1	O 1	0	0
9	B	1	Total 16	C 14	N 1	O 1	0	0
9	B	1	Total 16	C 14	N 1	O 1	0	0
9	B	1	Total 16	C 14	N 1	O 1	0	0
9	B	1	Total 16	C 14	N 1	O 1	0	0

- Molecule 10 is DODECYL-BETA-D-MALTOSE (three-letter code: LMT) (formula: $C_{24}H_{46}O_{11}$).



Mol	Chain	Residues	Atoms			ZeroOcc	AltConf
10	A	1	Total	C	O	0	0
			35	24	11		
10	A	1	Total	C	O	0	0
			35	24	11		
10	A	1	Total	C	O	0	0
			35	24	11		
10	A	1	Total	C	O	0	0
			35	24	11		
10	A	1	Total	C	O	0	0
			35	24	11		
10	A	1	Total	C	O	0	0
			35	24	11		
10	A	1	Total	C	O	0	0
			35	24	11		
10	B	1	Total	C	O	0	1
			47	36	11		
10	B	1	Total	C	O	0	0
			35	24	11		
10	B	1	Total	C	O	0	0
			35	24	11		
10	D	1	Total	C	O	0	0
			35	24	11		

- Molecule 11 is PEROXIDE ION (three-letter code: PER) (formula: O₂).



Mol	Chain	Residues	Atoms	ZeroOcc	AltConf
11	A	1	Total O 2 2	0	0

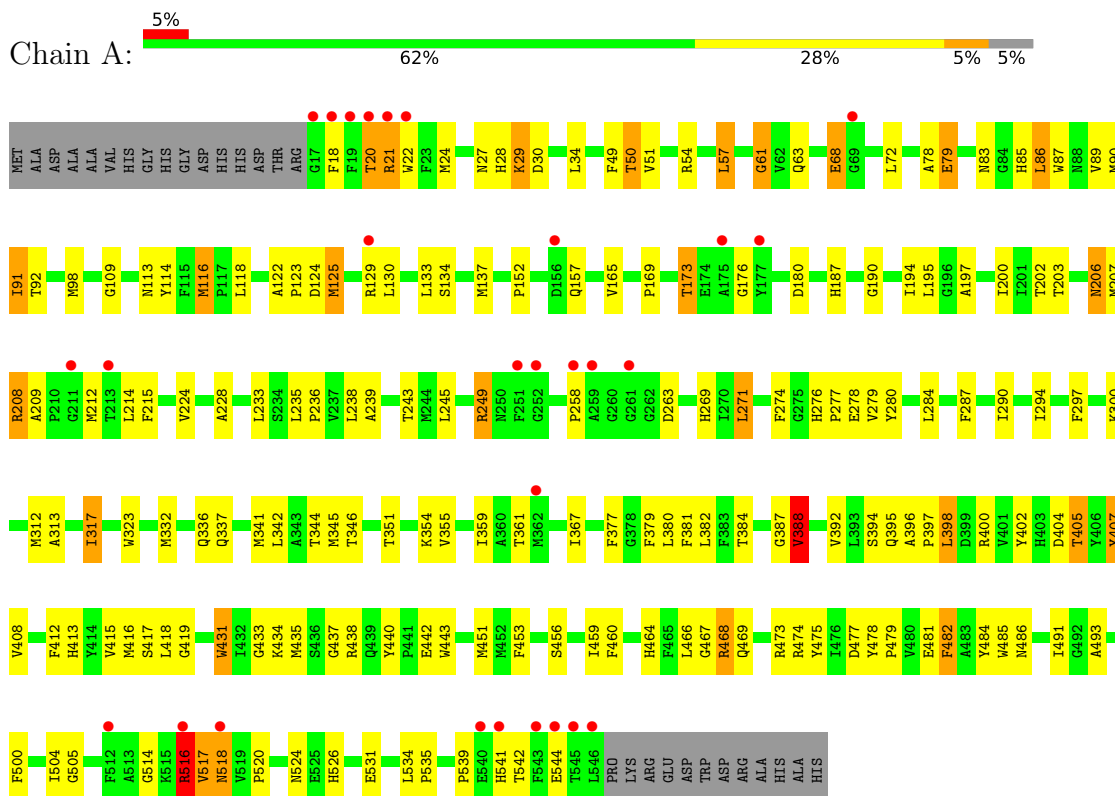
- Molecule 12 is water.

Mol	Chain	Residues	Atoms	ZeroOcc	AltConf
12	A	117	Total O 117 117	0	0
12	B	138	Total O 138 138	0	0
12	C	70	Total O 70 70	0	0
12	D	54	Total O 54 54	0	0

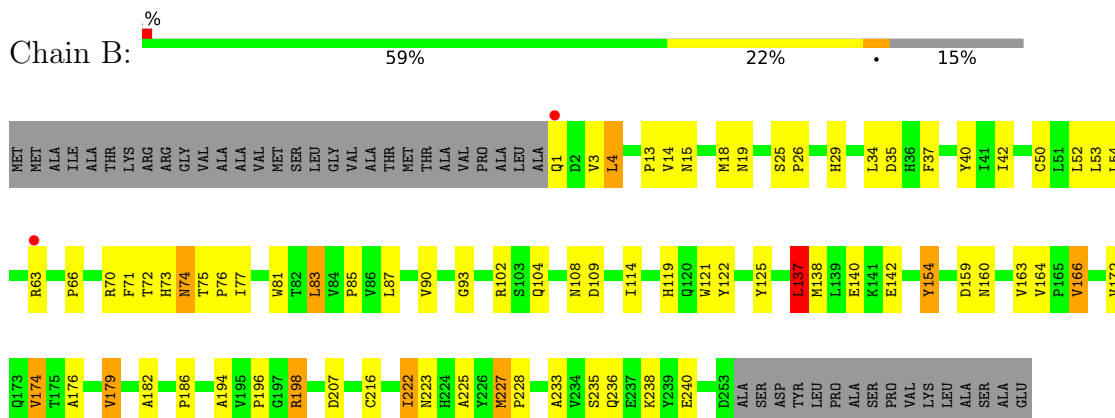
3 Residue-property plots

These plots are drawn for all protein, RNA, DNA and oligosaccharide chains in the entry. The first graphic for a chain summarises the proportions of the various outlier classes displayed in the second graphic. The second graphic shows the sequence view annotated by issues in geometry and electron density. Residues are color-coded according to the number of geometric quality criteria for which they contain at least one outlier: green = 0, yellow = 1, orange = 2 and red = 3 or more. A red dot above a residue indicates a poor fit to the electron density ($RSRZ > 2$). Stretches of 2 or more consecutive residues without any outlier are shown as a green connector. Residues present in the sample, but not in the model, are shown in grey.

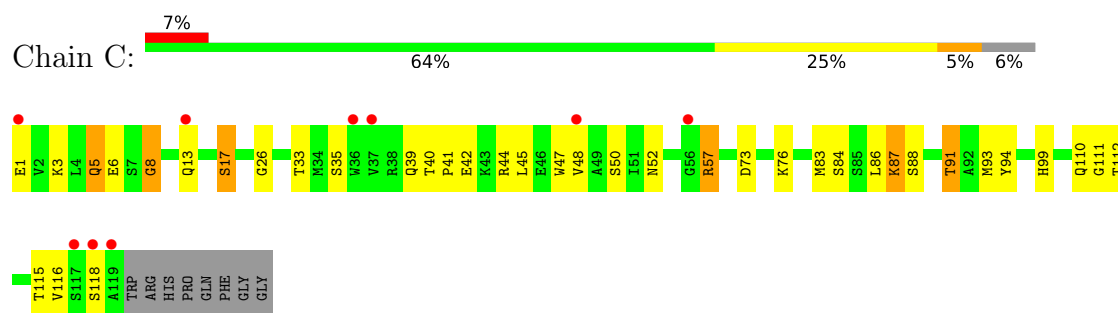
- Molecule 1: Cytochrome c oxidase subunit 1-beta



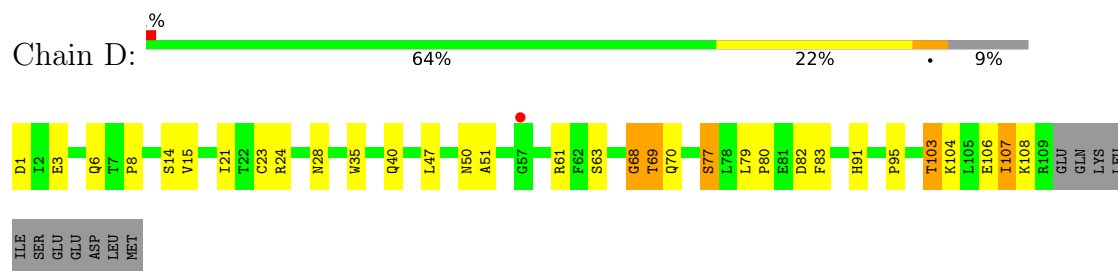
- Molecule 2: Cytochrome c oxidase subunit 2



- Molecule 3: FV fragment Chain H



- Molecule 4: FV fragment Chain L



4 Data and refinement statistics i

Property	Value	Source
Space group	P 21 21 21	Depositor
Cell constants a, b, c, α , β , γ	84.46Å 151.33Å 157.49Å 90.00° 90.00° 90.00°	Depositor
Resolution (Å)	19.69 – 2.32 19.69 – 2.32	Depositor EDS
% Data completeness (in resolution range)	100.0 (19.69-2.32) 98.9 (19.69-2.32)	Depositor EDS
R_{merge}	0.09	Depositor
R_{sym}	(Not available)	Depositor
$\langle I/\sigma(I) \rangle$ ¹	3.35 (at 2.33Å)	Xtrriage
Refinement program	REFMAC 5.2.0019	Depositor
R, R_{free}	0.205 , 0.242 0.204 , 0.205	Depositor DCC
R_{free} test set	2629 reflections (3.02%)	wwPDB-VP
Wilson B-factor (Å ²)	43.8	Xtrriage
Anisotropy	0.268	Xtrriage
Bulk solvent k_{sol} (e/Å ³), B_{sol} (Å ²)	0.33 , 64.3	EDS
L-test for twinning ²	$\langle L \rangle = 0.49$, $\langle L^2 \rangle = 0.32$	Xtrriage
Estimated twinning fraction	0.010 for -h,l,k	Xtrriage
F_o, F_c correlation	0.93	EDS
Total number of atoms	9036	wwPDB-VP
Average B, all atoms (Å ²)	60.0	wwPDB-VP

Xtrriage's analysis on translational NCS is as follows: *The largest off-origin peak in the Patterson function is 2.95% of the height of the origin peak. No significant pseudotranslation is detected.*

¹Intensities estimated from amplitudes.

²Theoretical values of $\langle |L| \rangle$, $\langle L^2 \rangle$ for acentric reflections are 0.5, 0.333 respectively for untwinned datasets, and 0.375, 0.2 for perfectly twinned datasets.

5 Model quality i

5.1 Standard geometry i

Bond lengths and bond angles in the following residue types are not validated in this section: CU, LDA, CA, LMT, PER, HEA, MG

The Z score for a bond length (or angle) is the number of standard deviations the observed value is removed from the expected value. A bond length (or angle) with $|Z| > 5$ is considered an outlier worth inspection. RMSZ is the root-mean-square of all Z scores of the bond lengths (or angles).

Mol	Chain	Bond lengths		Bond angles	
		RMSZ	# Z >5	RMSZ	# Z >5
1	A	1.20	6/4367 (0.1%)	1.08	18/5959 (0.3%)
2	B	1.38	7/2043 (0.3%)	1.18	10/2801 (0.4%)
3	C	1.14	0/973	1.05	1/1316 (0.1%)
4	D	1.28	2/853 (0.2%)	1.10	0/1158
All	All	1.25	15/8236 (0.2%)	1.11	29/11234 (0.3%)

Chiral center outliers are detected by calculating the chiral volume of a chiral center and verifying if the center is modelled as a planar moiety or with the opposite hand. A planarity outlier is detected by checking planarity of atoms in a peptide group, atoms in a mainchain group or atoms of a sidechain that are expected to be planar.

Mol	Chain	#Chirality outliers	#Planarity outliers
3	C	0	1

All (15) bond length outliers are listed below:

Mol	Chain	Res	Type	Atoms	Z	Observed(Å)	Ideal(Å)
4	D	23	CYS	CB-SG	-8.64	1.67	1.82
2	B	125	TYR	CE2-CZ	7.65	1.48	1.38
1	A	407	TYR	CD2-CE2	7.47	1.50	1.39
2	B	182	ALA	CA-CB	6.48	1.66	1.52
1	A	460	PHE	CE2-CZ	6.47	1.49	1.37
4	D	51	ALA	CA-CB	6.19	1.65	1.52
2	B	125	TYR	CD2-CE2	5.60	1.47	1.39
1	A	482	PHE	CE1-CZ	5.40	1.47	1.37
1	A	468	ARG	CG-CD	5.38	1.65	1.51
2	B	154	TYR	CG-CD2	5.35	1.46	1.39
2	B	163	VAL	CB-CG1	5.35	1.64	1.52
1	A	431	TRP	CE3-CZ3	5.13	1.47	1.38
1	A	392	VAL	CB-CG1	5.02	1.63	1.52
2	B	222	ILE	CG1-CD1	5.01	1.85	1.50

Continued on next page...

Continued from previous page...

Mol	Chain	Res	Type	Atoms	Z	Observed(Å)	Ideal(Å)
2	B	176	ALA	CA-CB	5.00	1.62	1.52

All (29) bond angle outliers are listed below:

Mol	Chain	Res	Type	Atoms	Z	Observed(°)	Ideal(°)
1	A	54	ARG	NE-CZ-NH2	-16.54	112.03	120.30
1	A	468	ARG	NE-CZ-NH2	-15.06	112.77	120.30
1	A	54	ARG	NE-CZ-NH1	8.99	124.79	120.30
1	A	263	ASP	CB-CG-OD1	8.92	126.33	118.30
1	A	249	ARG	NE-CZ-NH2	-8.12	116.24	120.30
2	B	137	LEU	CB-CG-CD2	7.86	124.35	111.00
2	B	137	LEU	CB-CG-CD1	-7.30	98.59	111.00
2	B	154	TYR	C-N-CA	-7.29	103.46	121.70
1	A	263	ASP	CB-CG-OD2	-7.26	111.77	118.30
1	A	468	ARG	NE-CZ-NH1	7.23	123.91	120.30
1	A	388	VAL	CG1-CB-CG2	6.89	121.92	110.90
1	A	271	LEU	CA-CB-CG	-6.74	99.80	115.30
2	B	163	VAL	CG1-CB-CG2	6.72	121.65	110.90
1	A	124	ASP	CB-CG-OD1	6.59	124.23	118.30
1	A	61	GLY	N-CA-C	-6.55	96.72	113.10
2	B	66	PRO	N-CA-C	-6.55	95.07	112.10
2	B	238	LYS	CD-CE-NZ	-6.51	96.72	111.70
2	B	166	VAL	CB-CA-C	-6.44	99.16	111.40
1	A	408	VAL	CG1-CB-CG2	6.30	120.98	110.90
1	A	400	ARG	NE-CZ-NH1	-6.29	117.16	120.30
1	A	468	ARG	CG-CD-NE	-6.26	98.65	111.80
1	A	215[A]	PHE	CB-CA-C	5.69	121.79	110.40
2	B	227	MET	CG-SD-CE	5.55	109.08	100.20
2	B	179	VAL	CG1-CB-CG2	5.50	119.70	110.90
1	A	86	LEU	CB-CG-CD2	5.36	120.11	111.00
1	A	208	ARG	NE-CZ-NH1	-5.23	117.69	120.30
3	C	8	GLY	N-CA-C	5.12	125.90	113.10
2	B	207	ASP	CB-CG-OD1	5.11	122.90	118.30
1	A	516	ARG	NE-CZ-NH2	5.09	122.85	120.30

There are no chirality outliers.

All (1) planarity outliers are listed below:

Mol	Chain	Res	Type	Group
3	C	8	GLY	Peptide

5.2 Too-close contacts [i](#)

In the following table, the Non-H and H(model) columns list the number of non-hydrogen atoms and hydrogen atoms in the chain respectively. The H(added) column lists the number of hydrogen atoms added and optimized by MolProbity. The Clashes column lists the number of clashes within the asymmetric unit, whereas Symm-Clashes lists symmetry-related clashes.

Mol	Chain	Non-H	H(model)	H(added)	Clashes	Symm-Clashes
1	A	4199	0	4116	177	0
2	B	1982	0	1965	63	0
3	C	941	0	898	26	0
4	D	832	0	807	23	0
5	A	120	0	104	24	0
6	A	1	0	0	0	0
6	B	2	0	0	0	0
7	A	1	0	0	0	0
8	A	1	0	0	0	0
9	A	64	0	124	5	0
9	B	80	0	155	15	0
10	A	280	0	335	27	0
10	B	117	0	133	8	0
10	D	35	0	39	3	0
11	A	2	0	0	0	0
12	A	117	0	0	4	0
12	B	138	0	0	5	0
12	C	70	0	0	4	0
12	D	54	0	0	2	0
All	All	9036	0	8676	305	0

The all-atom clashscore is defined as the number of clashes found per 1000 atoms (including hydrogen atoms). The all-atom clashscore for this structure is 18.

All (305) close contacts within the same asymmetric unit are listed below, sorted by their clash magnitude.

Atom-1	Atom-2	Interatomic distance (Å)	Clash overlap (Å)
2:B:222:ILE:CD1	2:B:222:ILE:CG1	1.85	1.55
1:A:276:HIS:NE2	1:A:280:TYR:HE2	1.07	1.44
1:A:276:HIS:NE2	1:A:280:TYR:CE2	1.96	1.31
10:A:575:LMT:O6B	10:A:575:LMT:C6B	1.81	1.28
1:A:342:LEU:HA	1:A:345:MET:CE	1.78	1.13
1:A:342:LEU:HA	1:A:345:MET:HE2	1.29	1.08
1:A:276:HIS:CE1	1:A:280:TYR:HE2	1.71	1.06
1:A:208:ARG:NH1	1:A:212:MET:O	1.93	1.01

Continued on next page...

Continued from previous page...

Atom-1	Atom-2	Interatomic distance (Å)	Clash overlap (Å)
2:B:1:GLN:HB2	2:B:4:LEU:HB2	1.42	1.00
1:A:342:LEU:HD23	1:A:345:MET:HE1	1.47	0.94
2:B:29:HIS:HD2	12:B:386:HOH:O	1.51	0.93
1:A:169:PRO:O	1:A:173:THR:HB	1.67	0.93
10:A:570:LMT:H2B	10:A:570:LMT:H6E	1.47	0.93
10:A:575:LMT:H3B	10:A:575:LMT:H4'	1.51	0.93
1:A:342:LEU:HD23	1:A:345:MET:CE	2.04	0.87
1:A:402:TYR:O	1:A:405:THR:HB	1.75	0.86
2:B:74:ASN:OD1	2:B:76:PRO:HD2	1.75	0.86
4:D:8:PRO:O	4:D:103:THR:HB	1.74	0.86
1:A:418:LEU:HD12	1:A:418:LEU:N	1.93	0.83
1:A:276:HIS:CE1	1:A:280:TYR:CE2	2.55	0.82
3:C:5:GLN:HG3	12:C:171:HOH:O	1.81	0.80
1:A:98:MET:HB3	5:A:559:HEA:CAC	2.13	0.79
10:A:571:LMT:H1B	10:A:571:LMT:O3'	1.80	0.78
1:A:29[A]:LYS:HG2	1:A:114:TYR:CZ	2.19	0.78
1:A:468:ARG:NH2	2:B:35:ASP:OD2	2.19	0.76
1:A:469:GLN:HE22	2:B:14:VAL:H	1.33	0.76
3:C:35:SER:OG	3:C:99:HIS:HE1	1.69	0.75
1:A:317:ILE:C	1:A:317:ILE:HD12	2.07	0.75
1:A:83:ASN:HD21	1:A:157:GLN:HE22	1.32	0.75
1:A:83:ASN:HD21	1:A:157:GLN:NE2	1.85	0.74
4:D:50:ASN:H	4:D:91:HIS:HE1	1.35	0.74
1:A:116:MET:CE	1:A:200:ILE:HG23	2.19	0.73
4:D:50:ASN:H	4:D:91:HIS:CE1	2.06	0.73
1:A:405:THR:CG2	1:A:407:TYR:H	2.02	0.73
3:C:91:THR:HG22	3:C:116:VAL:H	1.54	0.72
1:A:91:ILE:HD12	1:A:92:THR:N	2.04	0.72
1:A:417:SER:C	1:A:418:LEU:HD12	2.10	0.72
1:A:116:MET:HE3	1:A:200:ILE:HG23	1.74	0.69
1:A:412:PHE:HB2	5:A:560:HEA:HMD3	1.75	0.68
1:A:342:LEU:CA	1:A:345:MET:HE2	2.18	0.67
1:A:98:MET:HG3	5:A:559:HEA:C3C	2.25	0.67
3:C:1:GLU:OE2	3:C:26:GLY:O	2.13	0.67
1:A:415:VAL:O	1:A:419:GLY:HA3	1.95	0.67
1:A:418:LEU:N	1:A:418:LEU:CD1	2.57	0.66
2:B:154:TYR:CD1	2:B:154:TYR:O	2.49	0.65
1:A:206:ASN:N	1:A:206:ASN:HD22	1.95	0.65
1:A:206:ASN:N	1:A:206:ASN:ND2	2.45	0.65
4:D:6:GLN:NE2	4:D:103:THR:HG23	2.11	0.65
1:A:152:PRO:O	1:A:176:GLY:HA3	1.97	0.65

Continued on next page...

Continued from previous page...

Atom-1	Atom-2	Interatomic distance (Å)	Clash overlap (Å)
2:B:1:GLN:HB2	2:B:4:LEU:HD22	1.78	0.64
1:A:287:PHE:HB3	1:A:312:MET:HE2	1.79	0.64
1:A:21:ARG:HD3	1:A:22:TRP:CD1	2.33	0.64
9:B:272:LDA:H11	9:B:275:LDA:HM22	1.78	0.64
1:A:130:LEU:HD22	1:A:195:LEU:HD22	1.80	0.64
1:A:190:GLY:O	1:A:194:ILE:HG13	1.97	0.64
4:D:6:GLN:HE21	4:D:103:THR:HG23	1.63	0.64
1:A:337:GLN:HE22	2:B:104:GLN:NE2	1.96	0.63
4:D:104:LYS:HE2	4:D:106:GLU:OE2	1.97	0.63
1:A:405:THR:HG22	1:A:407:TYR:H	1.63	0.63
1:A:202:THR:O	1:A:206:ASN:ND2	2.31	0.63
5:A:560:HEA:HHC	5:A:560:HEA:O11	1.98	0.63
1:A:245:LEU:O	1:A:249:ARG:HG3	1.98	0.63
9:A:565:LDA:HM23	10:A:571:LMT:H5'	1.81	0.63
2:B:37:PHE:HD1	9:B:273:LDA:H11	1.64	0.63
1:A:337:GLN:HE22	2:B:104:GLN:HE21	1.44	0.63
1:A:269:HIS:HD2	1:A:323:TRP:HE1	1.46	0.62
2:B:1:GLN:CB	2:B:4:LEU:HB2	2.23	0.62
1:A:342:LEU:HD22	10:A:574:LMT:H81	1.81	0.62
1:A:336:GLN:HE22	9:A:566:LDA:H22	1.65	0.61
1:A:433:GLY:HA2	1:A:438:ARG:O	1.99	0.61
1:A:473:ARG:O	1:A:474:ARG:HB2	2.00	0.61
1:A:381:PHE:CD2	1:A:382:LEU:CD2	2.84	0.61
1:A:381:PHE:CD2	1:A:382:LEU:HD23	2.35	0.61
4:D:24:ARG:HD2	4:D:70:GLN:HE22	1.64	0.61
1:A:485:TRP:HH2	10:B:278:LMT:H11	1.63	0.61
2:B:227:MET:N	2:B:228:PRO:CD	2.64	0.60
1:A:187:HIS:CE1	1:A:243:THR:HG22	2.36	0.60
1:A:284:LEU:O	1:A:287:PHE:HB2	2.02	0.60
1:A:412:PHE:CD2	5:A:560:HEA:HAD1	2.36	0.60
1:A:239:ALA:O	1:A:243:THR:HG23	2.01	0.60
3:C:57:ARG:HG3	3:C:57:ARG:HH11	1.67	0.60
5:A:560:HEA:HMB1	5:A:560:HEA:H122	1.85	0.59
1:A:129:ARG:HG3	10:A:575:LMT:H31	1.84	0.59
1:A:297:PHE:O	1:A:367:ILE:HA	2.01	0.59
1:A:351:THR:HG21	5:A:560:HEA:H14	1.84	0.59
1:A:312:MET:HE3	12:A:579:HOH:O	2.02	0.59
1:A:484:TYR:H	2:B:15:ASN:HD21	1.51	0.59
4:D:69:THR:HG22	4:D:70:GLN:HG2	1.84	0.59
1:A:287:PHE:HB3	1:A:312:MET:CE	2.34	0.58
1:A:464:HIS:O	1:A:468:ARG:HG3	2.02	0.58

Continued on next page...

Continued from previous page...

Atom-1	Atom-2	Interatomic distance (Å)	Clash overlap (Å)
1:A:83:ASN:ND2	1:A:157:GLN:HE22	2.01	0.58
1:A:451:MET:HG2	10:A:572:LMT:H92	1.86	0.58
3:C:47:TRP:HE1	3:C:50:SER:HB2	1.69	0.58
10:A:574:LMT:H91	2:B:90:VAL:HA	1.86	0.57
1:A:341:MET:HG3	1:A:394:SER:O	2.04	0.57
1:A:468:ARG:HD3	2:B:18:MET:O	2.04	0.57
1:A:85:HIS:O	1:A:89:VAL:HG23	2.03	0.57
3:C:93:MET:CE	3:C:112:THR:C	2.73	0.57
9:B:274:LDA:H12	10:B:279:LMT:H121	1.85	0.57
1:A:412:PHE:CB	5:A:560:HEA:C2D	2.83	0.57
1:A:116:MET:HE1	1:A:200:ILE:HG23	1.87	0.56
1:A:443:TRP:HZ2	10:A:569:LMT:H11	1.69	0.56
3:C:88:SER:O	3:C:91:THR:HG23	2.05	0.56
3:C:91:THR:HB	3:C:115:THR:HA	1.88	0.56
1:A:27:ASN:HB3	1:A:30:ASP:OD2	2.06	0.55
1:A:125:MET:HA	1:A:125:MET:HE3	1.88	0.55
2:B:19:ASN:ND2	9:B:272:LDA:H32	2.20	0.55
3:C:47:TRP:CZ2	4:D:95:PRO:HB3	2.41	0.55
4:D:6:GLN:HG2	4:D:103:THR:HG22	1.88	0.55
1:A:129:ARG:CG	10:A:575:LMT:H31	2.36	0.55
2:B:3:VAL:HG13	2:B:4:LEU:HD13	1.89	0.55
2:B:19:ASN:HD21	9:B:272:LDA:H51	1.70	0.55
1:A:412:PHE:HB3	5:A:560:HEA:C2D	2.36	0.55
1:A:468:ARG:NH1	2:B:19:ASN:OD1	2.40	0.55
10:A:570:LMT:H6E	10:A:570:LMT:C2B	2.30	0.55
1:A:485:TRP:CH2	10:B:278:LMT:H11	2.42	0.55
3:C:87:LYS:HE2	12:C:135:HOH:O	2.07	0.55
1:A:109:GLY:O	1:A:113:ASN:HB2	2.07	0.54
1:A:276:HIS:O	1:A:279:VAL:HG22	2.07	0.54
4:D:40:GLN:HB2	12:D:132:HOH:O	2.07	0.54
2:B:109:ASP:HB3	12:B:372:HOH:O	2.07	0.54
1:A:78:ALA:O	1:A:79:GLU:C	2.46	0.54
1:A:405:THR:HG23	1:A:407:TYR:H	1.71	0.54
2:B:75:THR:O	2:B:76:PRO:C	2.46	0.54
1:A:412:PHE:CE1	1:A:413:HIS:CE1	2.96	0.54
1:A:344:THR:HG22	5:A:560:HEA:HMB2	1.91	0.53
1:A:57:LEU:HD22	1:A:87:TRP:HH2	1.74	0.53
2:B:19:ASN:HD21	9:B:272:LDA:H32	1.73	0.53
3:C:86:LEU:HB3	3:C:116:VAL:HG21	1.90	0.53
1:A:18:PHE:HB3	1:A:21:ARG:HB2	1.91	0.53
4:D:79:LEU:HB3	4:D:80:PRO:HD2	1.90	0.53

Continued on next page...

Continued from previous page...

Atom-1	Atom-2	Interatomic distance (Å)	Clash overlap (Å)
1:A:274:PHE:CZ	1:A:278[A]:GLU:HG3	2.44	0.53
1:A:346:THR:HG22	10:A:574:LMT:H41	1.91	0.53
1:A:481:GLU:HG2	2:B:13:PRO:O	2.09	0.53
2:B:73:HIS:O	2:B:74:ASN:HB2	2.09	0.53
2:B:83:LEU:O	2:B:87:LEU:HD23	2.08	0.52
1:A:346:THR:HG22	10:A:574:LMT:H22	1.91	0.52
3:C:39:GLN:HB2	3:C:45:LEU:HD23	1.91	0.52
1:A:313:ALA:O	1:A:317:ILE:HG23	2.09	0.52
10:A:571:LMT:O3'	10:A:571:LMT:C1B	2.56	0.52
2:B:40:TYR:HE1	9:B:275:LDA:H31	1.74	0.52
10:D:121:LMT:H1B	10:D:121:LMT:O3'	2.09	0.52
1:A:524:ASN:OD1	1:A:526:HIS:HB2	2.09	0.52
4:D:61:ARG:HG3	4:D:61:ARG:HH11	1.75	0.52
2:B:138:MET:HG3	2:B:228:PRO:HG3	1.92	0.52
1:A:300:LYS:HD3	1:A:361:THR:O	2.10	0.51
1:A:290:ILE:O	1:A:294:ILE:HG13	2.10	0.51
1:A:416:MET:HG2	5:A:560:HEA:HBC2	1.91	0.51
1:A:68:GLU:H	1:A:68:GLU:CD	2.13	0.51
1:A:21:ARG:HD3	1:A:22:TRP:NE1	2.25	0.51
1:A:206:ASN:HD22	1:A:206:ASN:H	1.59	0.51
1:A:438:ARG:NH2	1:A:514:GLY:O	2.41	0.51
1:A:516:ARG:NH2	1:A:518:ASN:HB3	2.25	0.51
4:D:21:ILE:HG23	4:D:103:THR:HG21	1.92	0.51
1:A:187:HIS:HE1	1:A:243:THR:HG22	1.76	0.51
1:A:412:PHE:CB	5:A:560:HEA:HMD3	2.39	0.51
1:A:394:SER:HA	5:A:560:HEA:OMA	2.10	0.51
1:A:416:MET:HG2	5:A:560:HEA:CBC	2.41	0.50
2:B:52:LEU:HD13	10:B:279:LMT:H102	1.92	0.50
5:A:559:HEA:HHC	5:A:559:HEA:C12	2.42	0.50
3:C:17:SER:HB2	3:C:84:SER:HA	1.93	0.50
1:A:27:ASN:ND2	1:A:29[B]:LYS:HB2	2.27	0.50
1:A:504:ILE:CD1	10:A:570:LMT:H122	2.42	0.50
3:C:83:MET:HB3	3:C:86:LEU:HD21	1.94	0.50
1:A:440:TYR:OH	1:A:442:GLU:OE1	2.19	0.49
4:D:6:GLN:HG2	4:D:103:THR:CG2	2.42	0.49
1:A:125:MET:HE3	1:A:203:THR:HG21	1.94	0.49
2:B:1:GLN:HB2	2:B:4:LEU:CD2	2.42	0.49
1:A:122:ALA:HB2	1:A:207:MET:O	2.12	0.49
10:A:568:LMT:O2B	10:A:568:LMT:O3'	2.30	0.48
1:A:355:VAL:HG21	5:A:560:HEA:H18	1.94	0.48
1:A:27:ASN:HD21	1:A:29[C]:LYS:HE2	1.76	0.48

Continued on next page...

Continued from previous page...

Atom-1	Atom-2	Interatomic distance (Å)	Clash overlap (Å)
1:A:345:MET:HE3	10:A:574:LMT:H81	1.96	0.48
1:A:405:THR:HG23	1:A:467:GLY:HA2	1.94	0.48
1:A:456:SER:HA	1:A:459:ILE:HD12	1.96	0.48
1:A:379:PHE:CD1	1:A:379:PHE:C	2.86	0.48
2:B:216:CYS:HB2	2:B:227:MET:HG3	1.96	0.48
1:A:396:ALA:HB3	1:A:397:PRO:HD3	1.95	0.48
2:B:121:TRP:CD2	2:B:223:ASN:HB2	2.49	0.48
2:B:174:VAL:HG23	2:B:194:ALA:HB2	1.95	0.48
2:B:40:TYR:CE1	9:B:275:LDA:H31	2.49	0.47
2:B:164:VAL:O	2:B:233:ALA:HA	2.13	0.47
1:A:395:GLN:C	1:A:397:PRO:HD2	2.35	0.47
2:B:121:TRP:CG	2:B:223:ASN:HB2	2.49	0.47
3:C:94:TYR:O	3:C:111:GLY:HA2	2.14	0.47
5:A:559:HEA:HMC1	5:A:559:HEA:HBC1	1.95	0.47
10:A:574:LMT:H11	10:A:574:LMT:O2'	2.14	0.47
1:A:133:LEU:O	1:A:137:MET:HG2	2.14	0.47
1:A:484:TYR:N	2:B:15:ASN:HD21	2.11	0.47
9:A:566:LDA:H22	9:A:566:LDA:HM12	1.80	0.47
2:B:25:SER:HB2	2:B:26:PRO:HD2	1.95	0.47
1:A:125:MET:CE	1:A:203:THR:CB	2.93	0.47
4:D:28:ASN:OD1	4:D:68:GLY:HA2	2.15	0.47
1:A:478:TYR:O	1:A:479:PRO:C	2.53	0.47
1:A:459:ILE:HD11	1:A:493:ALA:HA	1.97	0.47
1:A:518:ASN:HD22	1:A:518:ASN:H	1.63	0.46
1:A:412:PHE:CG	5:A:560:HEA:HMD3	2.50	0.46
1:A:520:PRO:HA	1:A:534:LEU:O	2.16	0.46
9:A:564:LDA:HM23	9:A:564:LDA:H21	1.67	0.46
1:A:342:LEU:CD2	1:A:345:MET:HE3	2.46	0.46
1:A:491:ILE:HD13	10:A:572:LMT:H6'1	1.98	0.46
12:A:606:HOH:O	2:B:198:ARG:HD2	2.15	0.46
9:B:276:LDA:HM21	9:B:276:LDA:H21	1.70	0.46
3:C:40:THR:HB	3:C:41:PRO:HD2	1.98	0.46
1:A:271:LEU:O	1:A:271:LEU:HG	2.04	0.46
3:C:5:GLN:OE1	3:C:110[B]:GLN:NE2	2.49	0.46
1:A:29[B]:LYS:HD2	1:A:114:TYR:OH	2.15	0.46
1:A:417:SER:HB2	5:A:559:HEA:HMC2	1.98	0.46
1:A:398:LEU:HD13	2:B:34:LEU:HD23	1.97	0.45
2:B:19:ASN:HB3	12:B:309:HOH:O	2.16	0.45
1:A:342:LEU:CD2	1:A:345:MET:CE	2.85	0.45
1:A:541:HIS:NE2	12:A:609:HOH:O	2.32	0.45
2:B:70:ARG:HG3	12:B:391:HOH:O	2.16	0.45

Continued on next page...

Continued from previous page...

Atom-1	Atom-2	Interatomic distance (Å)	Clash overlap (Å)
2:B:73:HIS:C	2:B:73:HIS:CD2	2.90	0.45
1:A:187:HIS:CE1	1:A:243:THR:CG2	2.99	0.45
5:A:559:HEA:HHC	5:A:559:HEA:H122	1.97	0.45
1:A:332:MET:HG3	1:A:337:GLN:HG3	1.98	0.45
1:A:516:ARG:O	1:A:517:VAL:HG23	2.16	0.45
1:A:125:MET:CE	1:A:203:THR:OG1	2.65	0.45
1:A:317:ILE:C	1:A:317:ILE:CD1	2.83	0.45
1:A:118:LEU:HD23	12:A:674:HOH:O	2.17	0.44
1:A:516:ARG:CZ	1:A:518:ASN:HB3	2.46	0.44
1:A:388:VAL:HG13	2:B:42:ILE:HD12	2.00	0.44
1:A:387:GLY:HA3	5:A:560:HEA:C15	2.47	0.44
1:A:209:ALA:O	1:A:212:MET:HB3	2.18	0.44
1:A:381:PHE:HD2	1:A:382:LEU:CD2	2.30	0.44
1:A:431:TRP:O	1:A:435:MET:HG3	2.18	0.44
2:B:109:ASP:OD1	2:B:109:ASP:N	2.49	0.44
2:B:114:ILE:O	2:B:172:VAL:HA	2.17	0.44
4:D:61:ARG:NE	4:D:82:ASP:OD2	2.35	0.44
1:A:384:THR:O	1:A:388:VAL:HB	2.18	0.44
10:D:121:LMT:H12	10:D:121:LMT:O2'	2.17	0.44
1:A:276:HIS:CD2	1:A:280:TYR:CE2	2.95	0.44
1:A:355:VAL:O	1:A:359:ILE:HG13	2.17	0.43
1:A:336:GLN:HE22	9:A:566:LDA:HM12	1.83	0.43
2:B:71:PHE:CZ	10:B:279:LMT:H32	2.54	0.43
2:B:74:ASN:HD22	10:B:279:LMT:H12	1.84	0.43
1:A:354:LYS:HB3	1:A:354:LYS:HE3	1.88	0.43
4:D:83:PHE:CZ	4:D:107:ILE:HG23	2.53	0.43
1:A:235:LEU:N	1:A:236:PRO:CD	2.81	0.43
4:D:24:ARG:HD2	4:D:70:GLN:NE2	2.33	0.43
1:A:165:VAL:HB	1:A:271:LEU:CD2	2.48	0.43
1:A:505:GLY:HA3	10:A:569:LMT:H62	2.01	0.43
1:A:342:LEU:HD23	1:A:345:MET:HE3	1.93	0.43
10:D:121:LMT:O3'	10:D:121:LMT:C1B	2.66	0.43
1:A:453:PHE:CD2	1:A:453:PHE:C	2.92	0.43
3:C:52:ASN:HB2	12:C:178:HOH:O	2.18	0.43
1:A:28:HIS:HD2	1:A:113:ASN:O	2.00	0.42
1:A:180:ASP:OD1	1:A:249:ARG:HD3	2.19	0.42
3:C:44:ARG:HE	3:C:44:ARG:HB2	1.54	0.42
2:B:154:TYR:O	2:B:154:TYR:CG	2.72	0.42
2:B:227:MET:HA	2:B:228:PRO:HD2	1.80	0.42
9:B:274:LDA:H12	10:B:279:LMT:C12	2.50	0.42
3:C:39:GLN:HA	3:C:44:ARG:O	2.19	0.42

Continued on next page...

Continued from previous page...

Atom-1	Atom-2	Interatomic distance (Å)	Clash overlap (Å)
1:A:98:MET:HB3	5:A:559:HEA:CBC	2.50	0.42
1:A:381:PHE:CD2	1:A:382:LEU:HD21	2.54	0.42
1:A:500:PHE:HB2	5:A:559:HEA:H261	2.01	0.42
1:A:412:PHE:HB2	5:A:560:HEA:CMD	2.47	0.42
1:A:437:GLY:O	1:A:516:ARG:NH1	2.43	0.42
1:A:50:THR:HG22	1:A:51:VAL:N	2.34	0.42
1:A:258:PRO:HG3	2:B:196:PRO:HB2	2.02	0.42
2:B:37:PHE:CD1	9:B:273:LDA:H11	2.48	0.42
9:B:274:LDA:H41	9:B:274:LDA:H72	1.77	0.42
9:B:274:LDA:HM21	10:B:279:LMT:H121	2.00	0.42
9:B:275:LDA:H21	9:B:275:LDA:HM23	1.80	0.42
1:A:61:GLY:N	1:A:477:ASP:OD1	2.51	0.42
1:A:30:ASP:O	1:A:34:LEU:HG	2.19	0.42
1:A:197:ALA:HB1	1:A:228:ALA:HB1	2.02	0.41
10:A:574:LMT:H4'	10:A:574:LMT:H3B	2.01	0.41
10:A:575:LMT:H3B	10:A:575:LMT:C4'	2.37	0.41
3:C:3:LYS:HD3	12:C:171:HOH:O	2.19	0.41
4:D:8:PRO:O	4:D:103:THR:CB	2.58	0.41
4:D:24:ARG:CD	4:D:70:GLN:NE2	2.82	0.41
1:A:466:LEU:HD23	1:A:466:LEU:HA	1.93	0.41
2:B:160:ASN:ND2	12:B:394:HOH:O	2.46	0.41
2:B:102:ARG:HD3	12:D:159:HOH:O	2.20	0.41
4:D:35:TRP:O	4:D:47:LEU:HB2	2.21	0.41
2:B:159:ASP:OD1	2:B:160:ASN:N	2.51	0.41
1:A:535:PRO:HD2	1:A:539:PRO:HD3	2.03	0.41
10:A:568:LMT:H31	10:A:568:LMT:H61	1.71	0.41
2:B:122:TYR:CB	2:B:137:LEU:HD22	2.50	0.41
2:B:236:GLN:O	2:B:240:GLU:HG3	2.20	0.41
9:B:273:LDA:HM23	9:B:273:LDA:H22	1.76	0.41
1:A:208:ARG:HB3	1:A:212:MET:HG2	2.03	0.41
1:A:405:THR:HG23	1:A:467:GLY:CA	2.50	0.41
1:A:381:PHE:CD1	2:B:50:CYS:SG	3.14	0.41
1:A:434:LYS:HE3	1:A:531:GLU:O	2.21	0.41
1:A:49:PHE:HA	1:A:90:MET:CE	2.51	0.41
3:C:57:ARG:HG3	3:C:57:ARG:NH1	2.34	0.41
3:C:73:ASP:OD2	3:C:76:LYS:HG3	2.21	0.41
1:A:123:PRO:HB3	1:A:542:THR:O	2.20	0.41
1:A:482:PHE:O	1:A:486:ASN:OD1	2.39	0.41
1:A:491:ILE:HG23	10:A:572:LMT:H2'	2.03	0.41
2:B:227:MET:N	2:B:228:PRO:HD3	2.35	0.41
4:D:24:ARG:CD	4:D:70:GLN:HE22	2.33	0.41

Continued on next page...

Continued from previous page...

Atom-1	Atom-2	Interatomic distance (Å)	Clash overlap (Å)
10:A:574:LMT:H92	2:B:93:GLY:HA3	2.03	0.40
2:B:72:THR:O	2:B:73:HIS:HB3	2.21	0.40
2:B:119:HIS:O	2:B:121:TRP:HA	2.20	0.40
1:A:20:THR:O	1:A:24:MET:HB2	2.22	0.40
1:A:238:LEU:HD22	1:A:274:PHE:CE1	2.56	0.40
1:A:280:TYR:O	1:A:284:LEU:HD23	2.22	0.40
1:A:475:TYR:CZ	2:B:225:ALA:HA	2.57	0.40
10:A:574:LMT:H4'	10:A:574:LMT:H5B	2.03	0.40

There are no symmetry-related clashes.

5.3 Torsion angles [i](#)

5.3.1 Protein backbone [i](#)

In the following table, the Percentiles column shows the percent Ramachandran outliers of the chain as a percentile score with respect to all X-ray entries followed by that with respect to entries of similar resolution.

The Analysed column shows the number of residues for which the backbone conformation was analysed, and the total number of residues.

Mol	Chain	Analysed	Favoured	Allowed	Outliers	Percentiles	
1	A	531/558 (95%)	494 (93%)	34 (6%)	3 (1%)	25	30
2	B	252/298 (85%)	240 (95%)	10 (4%)	2 (1%)	19	23
3	C	119/127 (94%)	110 (92%)	8 (7%)	1 (1%)	19	23
4	D	107/120 (89%)	101 (94%)	4 (4%)	2 (2%)	8	6
All	All	1009/1103 (92%)	945 (94%)	56 (6%)	8 (1%)	19	23

All (8) Ramachandran outliers are listed below:

Mol	Chain	Res	Type
2	B	74	ASN
3	C	118	SER
1	A	79	GLU
4	D	77	SER
2	B	235	SER
1	A	544	GLU
1	A	517	VAL

Continued on next page...

Continued from previous page...

Mol	Chain	Res	Type
4	D	68	GLY

5.3.2 Protein sidechains [i](#)

In the following table, the Percentiles column shows the percent sidechain outliers of the chain as a percentile score with respect to all X-ray entries followed by that with respect to entries of similar resolution.

The Analysed column shows the number of residues for which the sidechain conformation was analysed, and the total number of residues.

Mol	Chain	Analysed	Rotameric	Outliers	Percentiles	
1	A	435/454 (96%)	405 (93%)	30 (7%)	15	20
2	B	212/243 (87%)	194 (92%)	18 (8%)	10	12
3	C	103/107 (96%)	94 (91%)	9 (9%)	10	12
4	D	92/104 (88%)	82 (89%)	10 (11%)	6	7
All	All	842/908 (93%)	775 (92%)	67 (8%)	13	15

All (67) residues with a non-rotameric sidechain are listed below:

Mol	Chain	Res	Type
1	A	20	THR
1	A	21	ARG
1	A	29[A]	LYS
1	A	29[B]	LYS
1	A	29[C]	LYS
1	A	50	THR
1	A	57	LEU
1	A	63	GLN
1	A	68	GLU
1	A	72	LEU
1	A	86	LEU
1	A	91	ILE
1	A	116	MET
1	A	125	MET
1	A	134	SER
1	A	173	THR
1	A	206	ASN
1	A	214	LEU
1	A	224	VAL
1	A	233	LEU

Continued on next page...

Continued from previous page...

Mol	Chain	Res	Type
1	A	277	PRO
1	A	317	ILE
1	A	377	PHE
1	A	380	LEU
1	A	388	VAL
1	A	398	LEU
1	A	404	ASP
1	A	405	THR
1	A	516	ARG
1	A	518	ASN
2	B	4	LEU
2	B	53	LEU
2	B	54	LEU
2	B	63	ARG
2	B	77	ILE
2	B	81	TRP
2	B	83	LEU
2	B	85	PRO
2	B	108	ASN
2	B	137	LEU
2	B	140[A]	GLU
2	B	140[B]	GLU
2	B	142	GLU
2	B	166	VAL
2	B	174	VAL
2	B	179	VAL
2	B	186	PRO
2	B	198	ARG
3	C	5	GLN
3	C	13	GLN
3	C	17	SER
3	C	33	THR
3	C	42	GLU
3	C	48	VAL
3	C	57	ARG
3	C	87	LYS
3	C	91	THR
4	D	1	ASP
4	D	3	GLU
4	D	14	SER
4	D	15	VAL
4	D	63	SER

Continued on next page...

Continued from previous page...

Mol	Chain	Res	Type
4	D	69	THR
4	D	77	SER
4	D	103	THR
4	D	107	ILE
4	D	108	LYS

Sometimes sidechains can be flipped to improve hydrogen bonding and reduce clashes. All (25) such sidechains are listed below:

Mol	Chain	Res	Type
1	A	27	ASN
1	A	28	HIS
1	A	59	HIS
1	A	155	ASN
1	A	157	GLN
1	A	206	ASN
1	A	250	ASN
1	A	268	GLN
1	A	269	HIS
1	A	469	GLN
1	A	486	ASN
1	A	518	ASN
2	B	15	ASN
2	B	21	GLN
2	B	29	HIS
2	B	73	HIS
2	B	104	GLN
2	B	108	ASN
2	B	173	GLN
2	B	208	GLN
3	C	99	HIS
4	D	6	GLN
4	D	37	GLN
4	D	90	HIS
4	D	91	HIS

5.3.3 RNA

There are no RNA molecules in this entry.

5.4 Non-standard residues in protein, DNA, RNA chains [i](#)

There are no non-standard protein/DNA/RNA residues in this entry.

5.5 Carbohydrates [i](#)

There are no monosaccharides in this entry.

5.6 Ligand geometry [i](#)

Of 30 ligands modelled in this entry, 5 are monoatomic - leaving 25 for Mogul analysis.

In the following table, the Counts columns list the number of bonds (or angles) for which Mogul statistics could be retrieved, the number of bonds (or angles) that are observed in the model and the number of bonds (or angles) that are defined in the Chemical Component Dictionary. The Link column lists molecule types, if any, to which the group is linked. The Z score for a bond length (or angle) is the number of standard deviations the observed value is removed from the expected value. A bond length (or angle) with $|Z| > 2$ is considered an outlier worth inspection. RMSZ is the root-mean-square of all Z scores of the bond lengths (or angles).

Mol	Type	Chain	Res	Link	Bond lengths			Bond angles		
					Counts	RMSZ	# Z > 2	Counts	RMSZ	# Z > 2
5	HEA	A	559	1	57,67,67	3.10	17 (29%)	61,103,103	4.42	37 (60%)
9	LDA	B	276	-	12,15,15	2.03	1 (8%)	14,17,17	0.44	0
9	LDA	A	565	-	12,15,15	1.91	1 (8%)	14,17,17	0.50	0
9	LDA	B	274	-	12,15,15	1.98	1 (8%)	14,17,17	0.49	0
9	LDA	B	273	-	12,15,15	2.01	1 (8%)	14,17,17	0.61	0
10	LMT	A	571	-	36,36,36	4.36	16 (44%)	47,47,47	1.51	7 (14%)
10	LMT	A	570	-	36,36,36	4.32	16 (44%)	47,47,47	1.45	5 (10%)
10	LMT	B	278	-	36,36,36	4.29	13 (36%)	47,47,47	1.60	9 (19%)
10	LMT	B	277[A]	-	36,36,36	4.32	15 (41%)	47,47,47	1.90	9 (19%)
9	LDA	B	275	-	12,15,15	1.91	1 (8%)	14,17,17	0.60	0
10	LMT	A	568	-	36,36,36	4.41	14 (38%)	47,47,47	1.22	3 (6%)
10	LMT	A	574	-	36,36,36	4.33	15 (41%)	47,47,47	1.62	6 (12%)
10	LMT	A	569	-	36,36,36	4.42	17 (47%)	47,47,47	1.93	13 (27%)
9	LDA	A	566	-	12,15,15	1.90	1 (8%)	14,17,17	0.56	0
9	LDA	A	564	-	12,15,15	2.02	1 (8%)	14,17,17	0.65	0
11	PER	A	576	5	0,1,1	-	-	-	-	-
10	LMT	A	572	-	36,36,36	4.10	17 (47%)	47,47,47	1.51	5 (10%)
10	LMT	A	573	-	36,36,36	4.10	16 (44%)	47,47,47	1.63	7 (14%)

Mol	Type	Chain	Res	Link	Bond lengths			Bond angles		
					Counts	RMSZ	# Z > 2	Counts	RMSZ	# Z > 2
5	HEA	A	560	1,11	57,67,67	3.68	25 (43%)	61,103,103	4.31	37 (60%)
10	LMT	B	277[B]	-	36,36,36	4.32	15 (41%)	47,47,47	1.80	9 (19%)
9	LDA	A	567	-	12,15,15	2.00	1 (8%)	14,17,17	0.41	0
10	LMT	A	575	-	36,36,36	4.51	16 (44%)	47,47,47	1.55	7 (14%)
10	LMT	D	121	-	36,36,36	4.15	15 (41%)	47,47,47	2.17	12 (25%)
10	LMT	B	279	-	36,36,36	4.32	14 (38%)	47,47,47	1.23	5 (10%)
9	LDA	B	272	-	12,15,15	1.95	1 (8%)	14,17,17	0.69	0

In the following table, the Chirals column lists the number of chiral outliers, the number of chiral centers analysed, the number of these observed in the model and the number defined in the Chemical Component Dictionary. Similar counts are reported in the Torsion and Rings columns. '-' means no outliers of that kind were identified.

Mol	Type	Chain	Res	Link	Chirals	Torsions	Rings
5	HEA	A	559	1	1/1/7/16	13/32/76/76	-
9	LDA	B	276	-	-	8/13/13/13	-
9	LDA	A	565	-	-	8/13/13/13	-
9	LDA	B	274	-	-	10/13/13/13	-
9	LDA	B	273	-	-	9/13/13/13	-
10	LMT	A	571	-	-	15/21/61/61	0/2/2/2
10	LMT	A	570	-	-	11/21/61/61	0/2/2/2
10	LMT	B	278	-	-	14/21/61/61	0/2/2/2
10	LMT	B	277[A]	-	-	10/21/61/61	0/2/2/2
9	LDA	B	275	-	-	4/13/13/13	-
10	LMT	A	568	-	-	11/21/61/61	0/2/2/2
10	LMT	A	574	-	-	16/21/61/61	0/2/2/2
10	LMT	A	569	-	-	9/21/61/61	0/2/2/2
9	LDA	A	566	-	-	7/13/13/13	-
9	LDA	A	564	-	-	7/13/13/13	-
10	LMT	A	572	-	-	13/21/61/61	0/2/2/2
10	LMT	A	573	-	-	10/21/61/61	0/2/2/2
5	HEA	A	560	1,11	1/1/7/16	17/32/76/76	-
10	LMT	B	277[B]	-	-	5/21/61/61	0/2/2/2
9	LDA	A	567	-	-	9/13/13/13	-
10	LMT	A	575	-	-	15/21/61/61	0/2/2/2
10	LMT	D	121	-	-	14/21/61/61	0/2/2/2

Continued on next page...

Continued from previous page...

Mol	Type	Chain	Res	Link	Chirals	Torsions	Rings
10	LMT	B	279	-	-	13/21/61/61	0/2/2/2
9	LDA	B	272	-	-	6/13/13/13	-

All (250) bond length outliers are listed below:

Mol	Chain	Res	Type	Atoms	Z	Observed(Å)	Ideal(Å)
5	A	560	HEA	O11-C11	-12.28	1.16	1.42
5	A	560	HEA	C14-C15	10.68	1.58	1.33
5	A	559	HEA	O11-C11	-9.38	1.22	1.42
10	A	575	LMT	O6B-C6B	9.17	1.81	1.42
10	A	569	LMT	O2B-C2B	-8.91	1.22	1.43
10	B	277[A]	LMT	O4'-C4B	-8.89	1.22	1.43
10	B	277[B]	LMT	O4'-C4B	-8.89	1.22	1.43
10	A	571	LMT	C4B-C5B	-8.80	1.34	1.53
10	A	569	LMT	O3B-C3B	-8.79	1.22	1.43
10	B	278	LMT	O4'-C4B	-8.77	1.22	1.43
10	A	568	LMT	O3'-C3'	-8.57	1.22	1.43
10	B	279	LMT	O3'-C3'	-8.57	1.22	1.43
5	A	559	HEA	C22-C23	8.53	1.56	1.32
10	A	569	LMT	C4B-C5B	-8.51	1.35	1.53
10	A	570	LMT	O3B-C3B	-8.48	1.23	1.43
10	B	277[A]	LMT	O2B-C2B	-8.46	1.23	1.43
10	B	277[B]	LMT	O2B-C2B	-8.46	1.23	1.43
10	A	572	LMT	O3'-C3'	-8.44	1.23	1.43
10	A	568	LMT	O3B-C3B	-8.43	1.23	1.43
10	A	574	LMT	O3'-C3'	-8.42	1.23	1.43
10	A	568	LMT	O2B-C2B	-8.41	1.23	1.43
10	A	571	LMT	O4'-C4B	-8.40	1.23	1.43
10	A	574	LMT	O2B-C2B	-8.38	1.23	1.43
10	A	574	LMT	C4B-C5B	-8.38	1.35	1.53
10	A	574	LMT	O3B-C3B	-8.36	1.23	1.43
10	B	279	LMT	O3B-C3B	-8.36	1.23	1.43
10	A	570	LMT	O2B-C2B	-8.36	1.23	1.43
10	B	278	LMT	O2B-C2B	-8.32	1.23	1.43
10	A	575	LMT	O2B-C2B	-8.30	1.23	1.43
10	B	278	LMT	O3'-C3'	-8.29	1.23	1.43
10	A	575	LMT	O3'-C3'	-8.29	1.23	1.43
10	B	278	LMT	O3B-C3B	-8.28	1.23	1.43
10	A	571	LMT	O3B-C3B	-8.27	1.23	1.43
10	A	575	LMT	O4'-C4B	-8.25	1.23	1.43
10	A	570	LMT	O4'-C4B	-8.24	1.23	1.43
10	A	573	LMT	O2B-C2B	-8.24	1.23	1.43

Continued on next page...

Continued from previous page...

Mol	Chain	Res	Type	Atoms	Z	Observed(Å)	Ideal(Å)
10	B	279	LMT	O4'-C4B	-8.24	1.23	1.43
10	B	279	LMT	O2B-C2B	-8.21	1.23	1.43
10	A	570	LMT	C4B-C5B	-8.21	1.35	1.53
10	B	277[A]	LMT	O3'-C3'	-8.21	1.23	1.43
10	B	277[B]	LMT	O3'-C3'	-8.21	1.23	1.43
10	A	574	LMT	O4'-C4B	-8.19	1.23	1.43
10	A	571	LMT	O3'-C3'	-8.15	1.23	1.43
10	A	573	LMT	O3B-C3B	-8.13	1.23	1.43
10	A	570	LMT	O3'-C3'	-8.12	1.23	1.43
10	D	121	LMT	O2B-C2B	-8.11	1.23	1.43
10	A	569	LMT	O3'-C3'	-8.11	1.23	1.43
10	A	572	LMT	O3B-C3B	-8.11	1.23	1.43
10	B	278	LMT	C4B-C5B	-8.11	1.36	1.53
10	B	279	LMT	C4B-C5B	-8.10	1.36	1.53
10	D	121	LMT	O3B-C3B	-8.08	1.24	1.43
5	A	560	HEA	C18-C19	8.06	1.52	1.33
10	A	568	LMT	C4B-C5B	-8.06	1.36	1.53
10	A	568	LMT	O4'-C4B	-8.04	1.24	1.43
10	A	573	LMT	C4B-C5B	-8.03	1.36	1.53
10	B	277[A]	LMT	C4B-C5B	-8.01	1.36	1.53
10	B	277[B]	LMT	C4B-C5B	-8.01	1.36	1.53
10	A	571	LMT	O2B-C2B	-8.01	1.24	1.43
10	D	121	LMT	O3'-C3'	-7.99	1.24	1.43
5	A	560	HEA	C3C-C2C	7.93	1.51	1.40
10	A	569	LMT	O4'-C4B	-7.91	1.24	1.43
10	A	573	LMT	O3'-C3'	-7.90	1.24	1.43
10	B	277[A]	LMT	O3B-C3B	-7.88	1.24	1.43
10	B	277[B]	LMT	O3B-C3B	-7.88	1.24	1.43
10	A	575	LMT	C4B-C5B	-7.88	1.36	1.53
10	A	575	LMT	O3B-C3B	-7.87	1.24	1.43
10	A	572	LMT	O4'-C4B	-7.87	1.24	1.43
10	A	572	LMT	O2B-C2B	-7.81	1.24	1.43
5	A	559	HEA	C18-C19	7.77	1.51	1.33
10	A	573	LMT	O4'-C4B	-7.73	1.24	1.43
10	A	568	LMT	C3'-C2'	-7.68	1.32	1.52
10	A	572	LMT	C4B-C5B	-7.65	1.37	1.53
5	A	560	HEA	C22-C23	7.59	1.54	1.32
10	A	569	LMT	C3'-C2'	-7.58	1.33	1.52
10	D	121	LMT	O4'-C4B	-7.49	1.25	1.43
10	A	569	LMT	C3B-C2B	-7.32	1.33	1.52
5	A	559	HEA	C14-C15	7.27	1.50	1.33
10	B	278	LMT	C3'-C2'	-7.13	1.34	1.52

Continued on next page...

Continued from previous page...

Mol	Chain	Res	Type	Atoms	Z	Observed(Å)	Ideal(Å)
10	A	574	LMT	C3'-C2'	-7.03	1.34	1.52
10	A	568	LMT	C3B-C2B	-7.00	1.34	1.52
9	A	564	LDA	O1-N1	-6.89	1.26	1.42
9	B	276	LDA	O1-N1	-6.88	1.26	1.42
10	A	568	LMT	C4B-C3B	-6.86	1.34	1.52
10	B	279	LMT	C4'-C5'	-6.86	1.34	1.52
10	A	569	LMT	C4B-C3B	-6.85	1.34	1.52
10	A	570	LMT	C4'-C5'	-6.83	1.34	1.52
10	A	571	LMT	C1'-C2'	-6.83	1.32	1.52
10	A	571	LMT	C4B-C3B	-6.81	1.35	1.52
10	A	568	LMT	C3'-C4'	-6.80	1.34	1.52
9	B	273	LDA	O1-N1	-6.80	1.26	1.42
10	A	573	LMT	C3B-C2B	-6.80	1.35	1.52
10	B	279	LMT	C3'-C2'	-6.79	1.35	1.52
10	D	121	LMT	C4'-C5'	-6.75	1.35	1.52
10	B	279	LMT	C4B-C3B	-6.73	1.35	1.52
10	A	575	LMT	C3'-C2'	-6.71	1.35	1.52
10	B	277[A]	LMT	C1B-C2B	-6.69	1.33	1.52
10	B	277[B]	LMT	C1B-C2B	-6.69	1.33	1.52
9	A	567	LDA	O1-N1	-6.67	1.26	1.42
10	D	121	LMT	C3'-C2'	-6.66	1.35	1.52
10	B	277[A]	LMT	C3'-C4'	-6.66	1.34	1.52
10	B	277[B]	LMT	C3'-C4'	-6.66	1.34	1.52
9	B	274	LDA	O1-N1	-6.64	1.26	1.42
9	B	272	LDA	O1-N1	-6.64	1.26	1.42
10	A	570	LMT	C3B-C2B	-6.62	1.35	1.52
10	A	571	LMT	C3'-C2'	-6.60	1.35	1.52
10	B	278	LMT	C3B-C2B	-6.57	1.35	1.52
10	D	121	LMT	C4B-C5B	-6.57	1.39	1.53
10	A	570	LMT	C3'-C2'	-6.57	1.35	1.52
10	A	574	LMT	C3B-C2B	-6.56	1.35	1.52
10	B	279	LMT	C3B-C2B	-6.55	1.35	1.52
10	B	277[A]	LMT	C4B-C3B	-6.55	1.35	1.52
10	B	277[B]	LMT	C4B-C3B	-6.55	1.35	1.52
10	A	570	LMT	C4B-C3B	-6.53	1.35	1.52
10	A	571	LMT	C3B-C2B	-6.53	1.35	1.52
10	A	570	LMT	C3'-C4'	-6.51	1.34	1.52
10	B	279	LMT	C3'-C4'	-6.48	1.34	1.52
9	B	275	LDA	O1-N1	-6.48	1.27	1.42
10	A	575	LMT	C4B-C3B	-6.46	1.35	1.52
9	A	566	LDA	O1-N1	-6.44	1.27	1.42
9	A	565	LDA	O1-N1	-6.44	1.27	1.42

Continued on next page...

Continued from previous page...

Mol	Chain	Res	Type	Atoms	Z	Observed(Å)	Ideal(Å)
10	B	278	LMT	C1B-C2B	-6.43	1.34	1.52
10	A	568	LMT	C1'-C2'	-6.41	1.34	1.52
10	A	574	LMT	C4B-C3B	-6.38	1.36	1.52
10	D	121	LMT	C3'-C4'	-6.38	1.35	1.52
10	B	279	LMT	C1B-C2B	-6.38	1.34	1.52
10	A	568	LMT	C4'-C5'	-6.37	1.36	1.52
10	A	575	LMT	C3B-C2B	-6.37	1.36	1.52
10	A	572	LMT	C4B-C3B	-6.34	1.36	1.52
10	A	572	LMT	C3'-C2'	-6.34	1.36	1.52
10	B	278	LMT	C4B-C3B	-6.34	1.36	1.52
10	A	575	LMT	C4'-C5'	-6.33	1.36	1.52
10	A	571	LMT	C4'-C5'	-6.30	1.36	1.52
10	D	121	LMT	C3B-C2B	-6.29	1.36	1.52
10	B	277[A]	LMT	C3B-C2B	-6.28	1.36	1.52
10	B	277[B]	LMT	C3B-C2B	-6.28	1.36	1.52
10	D	121	LMT	C1'-C2'	-6.26	1.34	1.52
10	A	573	LMT	C4B-C3B	-6.20	1.36	1.52
10	A	569	LMT	C3'-C4'	-6.17	1.35	1.52
10	D	121	LMT	C4B-C3B	-6.14	1.36	1.52
10	B	277[A]	LMT	C4'-C5'	-6.10	1.36	1.52
10	B	277[B]	LMT	C4'-C5'	-6.10	1.36	1.52
10	A	574	LMT	C3'-C4'	-6.09	1.36	1.52
10	A	574	LMT	C4'-C5'	-6.08	1.36	1.52
10	A	574	LMT	C1B-C2B	-6.07	1.35	1.52
10	B	278	LMT	C1'-C2'	-6.06	1.35	1.52
10	B	278	LMT	C4'-C5'	-6.05	1.36	1.52
10	A	574	LMT	C1'-C2'	-6.03	1.35	1.52
10	A	575	LMT	C1'-C2'	-6.01	1.35	1.52
10	A	570	LMT	C1'-C2'	-6.00	1.35	1.52
5	A	559	HEA	C3B-C2B	6.00	1.48	1.34
10	A	569	LMT	C1'-C2'	-5.99	1.35	1.52
5	A	559	HEA	OMA-CMA	5.94	1.42	1.21
10	A	575	LMT	C3'-C4'	-5.93	1.36	1.52
10	A	573	LMT	C1B-C2B	-5.92	1.35	1.52
10	A	569	LMT	C1B-C2B	-5.90	1.35	1.52
10	A	572	LMT	C3B-C2B	-5.89	1.37	1.52
10	B	277[A]	LMT	C3'-C2'	-5.89	1.37	1.52
10	B	277[B]	LMT	C3'-C2'	-5.89	1.37	1.52
10	A	571	LMT	C3'-C4'	-5.87	1.36	1.52
5	A	560	HEA	OMA-CMA	5.84	1.41	1.21
10	A	570	LMT	C1B-C2B	-5.84	1.35	1.52
10	A	572	LMT	C4'-C5'	-5.80	1.37	1.52

Continued on next page...

Continued from previous page...

Mol	Chain	Res	Type	Atoms	Z	Observed(Å)	Ideal(Å)
10	A	575	LMT	C1B-C2B	-5.76	1.35	1.52
10	A	569	LMT	C4'-C5'	-5.76	1.37	1.52
10	B	277[A]	LMT	O1'-C1'	5.75	1.50	1.40
10	B	277[B]	LMT	O1'-C1'	5.75	1.50	1.40
10	A	573	LMT	C4'-C5'	-5.72	1.37	1.52
5	A	560	HEA	C3B-C2B	5.66	1.47	1.34
10	B	278	LMT	C3'-C4'	-5.66	1.37	1.52
10	A	568	LMT	C1B-C2B	-5.65	1.36	1.52
10	A	572	LMT	C3'-C4'	-5.63	1.37	1.52
10	A	573	LMT	C3'-C2'	-5.62	1.38	1.52
10	B	279	LMT	C1'-C2'	-5.60	1.36	1.52
10	A	572	LMT	C1'-C2'	-5.59	1.36	1.52
10	A	571	LMT	C1B-C2B	-5.59	1.36	1.52
10	D	121	LMT	C1B-C2B	-5.36	1.37	1.52
10	A	573	LMT	C1'-C2'	-5.35	1.37	1.52
10	A	573	LMT	C3'-C4'	-5.28	1.38	1.52
5	A	560	HEA	CHD-C1D	5.06	1.47	1.35
5	A	559	HEA	C3D-C2D	5.06	1.47	1.36
5	A	560	HEA	C3A-C2A	5.01	1.47	1.40
10	D	121	LMT	O1'-C1'	4.88	1.48	1.40
10	B	277[A]	LMT	C1'-C2'	-4.79	1.38	1.52
10	B	277[B]	LMT	C1'-C2'	-4.79	1.38	1.52
10	A	574	LMT	O1'-C1'	4.78	1.48	1.40
10	A	572	LMT	C1B-C2B	-4.75	1.38	1.52
5	A	560	HEA	C3D-C2D	4.72	1.46	1.36
10	A	575	LMT	O1'-C1'	4.59	1.48	1.40
10	A	568	LMT	O1'-C1'	4.58	1.48	1.40
10	A	571	LMT	O1'-C1'	4.48	1.47	1.40
5	A	560	HEA	CHC-C4B	4.38	1.46	1.35
5	A	559	HEA	CHD-C1D	4.27	1.45	1.35
5	A	559	HEA	C12-C11	-4.25	1.45	1.52
10	A	572	LMT	O1'-C1'	4.22	1.47	1.40
10	A	573	LMT	O1'-C1'	4.20	1.47	1.40
5	A	559	HEA	C3C-C2C	4.17	1.46	1.40
5	A	559	HEA	C1D-ND	-4.09	1.33	1.40
5	A	560	HEA	C4B-NB	-3.96	1.33	1.40
5	A	560	HEA	C1B-C2B	3.90	1.52	1.44
5	A	560	HEA	C4B-C3B	3.88	1.51	1.44
5	A	559	HEA	C3A-C2A	3.84	1.45	1.40
10	B	278	LMT	O1'-C1'	3.82	1.46	1.40
10	A	569	LMT	O1'-C1'	3.80	1.46	1.40
10	A	570	LMT	O1'-C1'	3.76	1.46	1.40

Continued on next page...

Continued from previous page...

Mol	Chain	Res	Type	Atoms	Z	Observed(Å)	Ideal(Å)
5	A	560	HEA	C1D-ND	-3.75	1.33	1.40
10	B	279	LMT	O1'-C1'	3.64	1.46	1.40
5	A	559	HEA	C4B-NB	-3.25	1.34	1.40
5	A	559	HEA	C1D-C2D	3.15	1.50	1.44
5	A	559	HEA	C4C-NC	-3.08	1.29	1.36
5	A	560	HEA	C4D-ND	-2.97	1.32	1.38
10	B	277[A]	LMT	O5B-C1B	2.86	1.49	1.41
10	B	277[B]	LMT	O5B-C1B	2.86	1.49	1.41
10	A	569	LMT	O5B-C1B	2.84	1.49	1.41
5	A	559	HEA	CHC-C4B	2.81	1.42	1.35
5	A	559	HEA	C1B-C2B	2.80	1.50	1.44
10	A	571	LMT	O5B-C1B	2.77	1.48	1.41
5	A	560	HEA	FE-NB	2.65	2.10	1.96
10	A	569	LMT	O5'-C1'	2.61	1.48	1.41
5	A	560	HEA	C2A-C1A	2.59	1.48	1.42
10	D	121	LMT	O1B-C1B	2.51	1.48	1.41
10	A	573	LMT	O1B-C1B	2.51	1.48	1.41
10	A	572	LMT	O5'-C1'	2.50	1.48	1.41
10	A	572	LMT	O5B-C1B	2.47	1.48	1.41
10	A	575	LMT	O1B-C1B	2.45	1.48	1.41
5	A	560	HEA	FE-ND	2.44	2.08	1.96
10	A	571	LMT	O1B-C1B	2.39	1.48	1.41
5	A	560	HEA	C24-C23	2.39	1.56	1.50
10	A	572	LMT	O1B-C1B	2.39	1.48	1.41
5	A	560	HEA	C13-C14	2.35	1.58	1.50
5	A	560	HEA	C1D-C2D	2.32	1.49	1.44
10	A	575	LMT	O5'-C1'	2.26	1.47	1.41
10	A	574	LMT	O5B-C1B	2.24	1.47	1.41
10	A	568	LMT	O5'-C1'	2.23	1.47	1.41
10	A	570	LMT	O1B-C4'	2.22	1.49	1.43
10	A	573	LMT	O1B-C4'	2.21	1.49	1.43
10	A	569	LMT	O1B-C1B	2.20	1.47	1.41
10	D	121	LMT	O2'-C2'	2.15	1.48	1.43
10	A	574	LMT	O1B-C1B	2.15	1.47	1.41
5	A	560	HEA	C4D-C3D	2.15	1.48	1.45
10	B	277[A]	LMT	O5'-C1'	2.15	1.47	1.41
10	B	277[B]	LMT	O5'-C1'	2.15	1.47	1.41
10	A	572	LMT	O2'-C2'	2.14	1.48	1.43
10	A	570	LMT	O5B-C1B	2.11	1.47	1.41
10	A	573	LMT	O5B-C1B	2.08	1.47	1.41
5	A	560	HEA	C12-C11	-2.07	1.49	1.52
5	A	560	HEA	C4C-CHD	2.07	1.46	1.41

Continued on next page...

Continued from previous page...

Mol	Chain	Res	Type	Atoms	Z	Observed(Å)	Ideal(Å)
10	B	279	LMT	O2'-C2'	2.06	1.47	1.43
10	A	571	LMT	O5'-C1'	2.05	1.47	1.41
10	A	569	LMT	O5'-C5'	2.03	1.49	1.44
10	A	570	LMT	O1B-C1B	2.01	1.47	1.41

All (171) bond angle outliers are listed below:

Mol	Chain	Res	Type	Atoms	Z	Observed(°)	Ideal(°)
5	A	560	HEA	C13-C12-C11	-16.19	90.03	114.35
5	A	559	HEA	CHB-C1B-NB	9.97	135.26	124.43
5	A	559	HEA	C17-C18-C19	-9.77	104.14	127.66
5	A	559	HEA	C4A-CHB-C1B	-9.15	110.48	122.56
5	A	559	HEA	C16-C15-C14	-9.13	102.64	121.12
5	A	559	HEA	C12-C13-C14	-8.77	89.08	112.23
5	A	560	HEA	CHB-C1B-NB	8.03	133.16	124.43
10	D	121	LMT	C1-O1'-C1'	7.95	127.02	113.84
5	A	559	HEA	CHC-C4B-NB	7.94	134.19	124.38
5	A	560	HEA	C13-C14-C15	-7.87	108.71	127.66
5	A	560	HEA	C27-C19-C18	-7.56	104.27	123.68
5	A	559	HEA	CHB-C1B-C2B	-7.55	113.18	124.98
5	A	560	HEA	C4A-CHB-C1B	-7.26	112.98	122.56
5	A	559	HEA	CBA-CAA-C2A	6.92	124.27	112.60
5	A	560	HEA	CHB-C1B-C2B	-6.76	114.42	124.98
5	A	560	HEA	C1D-ND-C4D	6.67	111.96	105.07
5	A	560	HEA	CHD-C1D-ND	6.58	132.52	124.38
5	A	559	HEA	CMC-C2C-C3C	6.55	136.93	124.68
5	A	559	HEA	C13-C14-C15	-6.50	112.01	127.66
10	A	573	LMT	C1-O1'-C1'	6.43	124.50	113.84
5	A	559	HEA	CHD-C1D-ND	6.39	132.28	124.38
10	A	569	LMT	O1'-C1'-C2'	6.36	118.23	108.30
5	A	559	HEA	CHA-C4D-ND	6.35	131.34	124.43
5	A	560	HEA	CHA-C4D-ND	6.28	131.26	124.43
5	A	559	HEA	C4B-NB-C1B	6.23	111.51	105.07
10	A	570	LMT	C1-O1'-C1'	6.19	124.11	113.84
5	A	560	HEA	CHC-C4B-NB	6.15	131.98	124.38
10	B	277[A]	LMT	O1'-C1'-C2'	6.02	117.70	108.30
10	B	277[B]	LMT	O1'-C1'-C2'	6.02	117.70	108.30
5	A	560	HEA	C12-C13-C14	5.94	127.91	112.23
10	A	571	LMT	C1-O1'-C1'	5.83	123.51	113.84
10	A	575	LMT	C1-O1'-C1'	5.79	123.44	113.84
10	A	574	LMT	C1-O1'-C1'	5.67	123.25	113.84
10	D	121	LMT	C4B-C3B-C2B	5.60	120.60	110.82

Continued on next page...

Continued from previous page...

Mol	Chain	Res	Type	Atoms	Z	Observed(°)	Ideal(°)
5	A	560	HEA	CAD-CBD-CGD	-5.57	101.61	113.60
5	A	560	HEA	C1B-C2B-C3B	-5.52	100.20	106.80
10	B	278	LMT	O1'-C1'-C2'	5.41	116.75	108.30
5	A	560	HEA	C4B-NB-C1B	5.29	110.54	105.07
5	A	559	HEA	C13-C12-C11	-5.28	106.42	114.35
10	A	572	LMT	C1-O1'-C1'	5.19	122.45	113.84
5	A	560	HEA	C26-C15-C14	-5.11	110.58	123.68
10	B	277[A]	LMT	C1-O1'-C1'	5.10	122.29	113.84
5	A	559	HEA	C1B-C2B-C3B	-5.09	100.71	106.80
5	A	559	HEA	C20-C19-C18	-4.96	111.09	121.12
10	A	569	LMT	O2'-C2'-C1'	4.87	121.87	110.05
5	A	559	HEA	CHA-C4D-C3D	-4.86	117.70	124.84
5	A	559	HEA	C27-C19-C18	-4.80	111.36	123.68
5	A	559	HEA	CMC-C2C-C1C	-4.75	121.17	128.46
5	A	560	HEA	CMB-C2B-C1B	4.72	132.22	125.04
10	B	277[A]	LMT	C3B-C4B-C5B	4.69	118.60	110.24
10	B	277[B]	LMT	C3B-C4B-C5B	4.69	118.60	110.24
5	A	559	HEA	CAA-CBA-CGA	-4.66	100.70	113.76
5	A	560	HEA	OMA-CMA-C3A	-4.61	114.86	124.91
10	A	568	LMT	C1-O1'-C1'	4.61	121.48	113.84
5	A	560	HEA	CMC-C2C-C3C	4.59	133.26	124.68
10	A	574	LMT	O1'-C1'-C2'	4.58	115.45	108.30
10	D	121	LMT	C3B-C4B-C5B	4.52	118.30	110.24
10	D	121	LMT	C1B-C2B-C3B	4.52	119.40	110.00
5	A	559	HEA	C27-C19-C20	-4.46	107.77	115.27
5	A	559	HEA	C1D-ND-C4D	4.38	109.60	105.07
10	A	573	LMT	C2'-C3'-C4'	4.37	119.65	109.68
5	A	559	HEA	C1D-C2D-C3D	-4.32	102.42	106.96
10	A	572	LMT	O1'-C1'-C2'	4.28	114.98	108.30
10	D	121	LMT	C1B-O5B-C5B	-4.22	105.40	113.69
10	A	575	LMT	O5B-C5B-C4B	4.12	117.17	109.69
5	A	560	HEA	C26-C15-C16	-4.12	108.34	115.27
10	B	279	LMT	C1-O1'-C1'	4.11	120.66	113.84
5	A	560	HEA	CAA-CBA-CGA	-4.08	102.33	113.76
5	A	559	HEA	C24-C23-C22	-4.00	111.10	122.65
10	B	277[A]	LMT	C1'-O5'-C5'	-3.96	105.92	113.69
10	B	277[B]	LMT	C1'-O5'-C5'	-3.96	105.92	113.69
10	A	574	LMT	O5'-C5'-C4'	3.94	118.07	109.75
5	A	559	HEA	C26-C15-C16	-3.94	108.64	115.27
10	B	277[A]	LMT	O5B-C5B-C4B	3.83	116.65	109.69
10	B	277[B]	LMT	O5B-C5B-C4B	3.83	116.65	109.69
10	A	569	LMT	C1'-C2'-C3'	-3.83	102.03	110.00

Continued on next page...

Continued from previous page...

Mol	Chain	Res	Type	Atoms	Z	Observed(°)	Ideal(°)
5	A	559	HEA	CHD-C1D-C2D	-3.81	116.19	126.72
5	A	559	HEA	C26-C15-C14	-3.76	114.03	123.68
10	A	570	LMT	O1B-C4'-C5'	3.73	119.66	109.45
5	A	560	HEA	C17-C18-C19	-3.69	118.78	127.66
5	A	560	HEA	CHA-C4D-C3D	-3.64	119.49	124.84
5	A	560	HEA	C17-C16-C15	-3.63	101.05	112.98
10	A	572	LMT	O1B-C1B-C2B	3.53	117.26	108.10
10	A	570	LMT	C1B-O5B-C5B	-3.44	106.94	113.69
10	A	574	LMT	C2'-C3'-C4'	3.42	117.49	109.68
10	B	279	LMT	C1'-O5'-C5'	-3.40	107.01	113.69
5	A	560	HEA	CHD-C1D-C2D	-3.33	117.51	126.72
10	A	571	LMT	C2'-C3'-C4'	3.29	117.20	109.68
5	A	560	HEA	CAD-C3D-C4D	3.27	130.37	124.66
5	A	560	HEA	C1D-C2D-C3D	-3.27	103.52	106.96
10	A	569	LMT	O3'-C3'-C4'	3.22	118.48	109.94
5	A	560	HEA	C21-C22-C23	-3.19	116.84	127.75
10	A	573	LMT	C1'-C2'-C3'	3.19	116.64	110.00
10	A	575	LMT	C3B-C4B-C5B	3.15	115.85	110.24
5	A	559	HEA	CHC-C4B-C3B	-3.14	117.72	125.80
10	A	573	LMT	O1'-C1'-C2'	3.07	113.10	108.30
5	A	560	HEA	C25-C23-C22	-3.07	113.78	122.65
5	A	560	HEA	C24-C23-C22	-3.06	113.81	122.65
10	A	574	LMT	C3'-C4'-C5'	3.01	117.82	110.93
10	B	278	LMT	C1B-O5B-C5B	-3.00	107.79	113.69
10	A	575	LMT	O6B-C6B-C5B	-2.94	101.20	111.29
5	A	560	HEA	C16-C15-C14	2.90	126.98	121.12
10	A	568	LMT	O1B-C1B-C2B	2.90	115.61	108.10
10	A	569	LMT	O1'-C1-C2	2.89	119.71	109.56
10	A	569	LMT	C2'-C3'-C4'	-2.89	103.08	109.68
10	A	572	LMT	O5'-C5'-C4'	2.89	115.85	109.75
5	A	560	HEA	CMD-C2D-C1D	2.87	129.40	125.04
10	B	278	LMT	C1'-C2'-C3'	-2.84	104.08	110.00
10	B	278	LMT	O5B-C1B-C2B	-2.82	104.37	110.35
10	A	575	LMT	O1B-C1B-C2B	2.82	115.40	108.10
5	A	559	HEA	O2D-CGD-O1D	-2.75	116.45	123.30
5	A	559	HEA	C4D-CHA-C1A	-2.73	118.95	122.56
10	B	277[A]	LMT	C6B-C5B-C4B	-2.72	106.62	113.00
10	B	277[B]	LMT	C6B-C5B-C4B	-2.72	106.62	113.00
10	B	277[A]	LMT	O5B-C5B-C6B	2.68	113.11	106.44
10	B	277[B]	LMT	O5B-C5B-C6B	2.68	113.11	106.44
10	A	571	LMT	C3'-C4'-C5'	2.67	117.05	110.93
5	A	559	HEA	CMB-C2B-C1B	2.66	129.10	125.04

Continued on next page...

Continued from previous page...

Mol	Chain	Res	Type	Atoms	Z	Observed(°)	Ideal(°)
10	D	121	LMT	C2'-C3'-C4'	2.65	115.73	109.68
5	A	559	HEA	C21-C22-C23	-2.63	118.75	127.75
10	A	572	LMT	O2B-C2B-C1B	2.62	116.42	110.05
5	A	559	HEA	C21-C20-C19	-2.60	104.41	112.98
10	A	569	LMT	O5'-C5'-C4'	2.60	115.23	109.75
10	A	573	LMT	C1'-O5'-C5'	-2.57	108.64	113.69
10	B	277[A]	LMT	C1'-C2'-C3'	2.55	115.30	110.00
10	B	277[B]	LMT	C1'-C2'-C3'	2.55	115.30	110.00
10	A	575	LMT	O1B-C4'-C3'	2.51	113.94	107.28
10	B	279	LMT	C1B-O5B-C5B	-2.49	108.80	113.69
5	A	559	HEA	CBD-CAD-C3D	-2.49	105.72	112.63
10	B	278	LMT	C2'-C3'-C4'	2.46	115.29	109.68
10	A	573	LMT	O1B-C1B-C2B	2.46	114.46	108.10
5	A	560	HEA	CHC-C4B-C3B	-2.45	119.49	125.80
10	A	569	LMT	C3-C2-C1	-2.42	102.76	113.49
5	A	559	HEA	CMD-C2D-C1D	2.42	128.73	125.04
10	D	121	LMT	O5'-C5'-C4'	2.41	114.84	109.75
10	B	279	LMT	O1'-C1'-C2'	2.40	112.05	108.30
10	A	569	LMT	O4'-C4B-C5B	2.36	115.16	109.30
10	A	569	LMT	O1B-C1B-C2B	2.36	114.21	108.10
10	B	278	LMT	O2'-C2'-C1'	2.35	115.76	110.05
5	A	560	HEA	CMC-C2C-C1C	-2.34	124.86	128.46
10	B	279	LMT	O5'-C5'-C6'	2.32	112.20	106.44
10	A	569	LMT	C4-C3-C2	2.32	126.19	114.42
10	A	570	LMT	O1B-C1B-C2B	2.27	113.99	108.10
10	B	277[A]	LMT	O1B-C1B-O5B	2.27	117.01	110.67
10	B	277[B]	LMT	O1B-C1B-O5B	2.27	117.01	110.67
10	A	571	LMT	O5B-C1B-C2B	2.26	115.13	110.35
5	A	560	HEA	C20-C19-C18	-2.25	116.57	121.12
10	A	569	LMT	O5B-C1B-C2B	2.23	115.07	110.35
5	A	560	HEA	CBA-CAA-C2A	2.23	116.36	112.60
5	A	559	HEA	O11-C11-C12	-2.22	103.22	109.42
10	B	278	LMT	O5B-C5B-C6B	2.21	111.93	106.44
10	A	574	LMT	O1B-C1B-C2B	2.19	113.77	108.10
10	A	568	LMT	O5'-C5'-C4'	2.19	114.37	109.75
10	A	569	LMT	C1B-C2B-C3B	2.19	114.55	110.00
10	D	121	LMT	O5B-C5B-C4B	2.16	113.62	109.69
10	A	571	LMT	C4-C3-C2	2.15	125.33	114.42
10	A	570	LMT	O5'-C5'-C6'	-2.14	101.11	106.44
10	B	277[B]	LMT	C1-O1'-C1'	2.13	117.37	113.84
10	B	278	LMT	O1B-C1B-O5B	-2.13	104.73	110.67
5	A	560	HEA	C2B-C1B-NB	2.12	112.42	109.88

Continued on next page...

Continued from previous page...

Mol	Chain	Res	Type	Atoms	Z	Observed(°)	Ideal(°)
10	B	278	LMT	O2B-C2B-C3B	2.09	115.17	110.35
5	A	560	HEA	C25-C23-C24	-2.08	110.01	114.60
5	A	559	HEA	OMA-CMA-C3A	-2.07	120.39	124.91
10	A	571	LMT	C3B-C4B-C5B	-2.07	106.54	110.24
10	D	121	LMT	C1'-O5'-C5'	2.07	117.75	113.69
10	D	121	LMT	O1B-C1B-C2B	2.07	113.45	108.10
10	D	121	LMT	O4'-C4B-C5B	2.04	114.36	109.30
10	A	575	LMT	O1'-C1'-C2'	2.04	111.48	108.30
10	A	571	LMT	C1B-O1B-C4'	-2.03	112.94	117.96
10	A	573	LMT	O5B-C5B-C4B	2.01	113.34	109.69
10	D	121	LMT	C3'-C4'-C5'	2.00	115.51	110.93

All (2) chirality outliers are listed below:

Mol	Chain	Res	Type	Atom
5	A	559	HEA	C11
5	A	560	HEA	C11

All (254) torsion outliers are listed below:

Mol	Chain	Res	Type	Atoms
5	A	559	HEA	O11-C11-C3B-C2B
5	A	559	HEA	C12-C11-C3B-C2B
5	A	559	HEA	C12-C11-C3B-C4B
5	A	559	HEA	O11-C11-C12-C13
5	A	559	HEA	C17-C18-C19-C27
5	A	560	HEA	O11-C11-C3B-C2B
5	A	560	HEA	C12-C11-C3B-C2B
5	A	560	HEA	O11-C11-C3B-C4B
5	A	560	HEA	C3B-C11-C12-C13
5	A	560	HEA	C11-C12-C13-C14
5	A	560	HEA	C17-C18-C19-C20
9	A	564	LDA	C2-C1-N1-CM2
9	A	565	LDA	C2-C1-N1-CM2
9	A	566	LDA	C2-C1-N1-CM1
9	A	567	LDA	C2-C1-N1-CM1
9	A	567	LDA	C2-C1-N1-CM2
9	B	272	LDA	C2-C1-N1-CM1
9	B	272	LDA	N1-C1-C2-C3
9	B	273	LDA	C2-C1-N1-O1
9	B	273	LDA	C2-C1-N1-CM1
9	B	273	LDA	C2-C1-N1-CM2

Continued on next page...

Continued from previous page...

Mol	Chain	Res	Type	Atoms
9	B	274	LDA	C2-C1-N1-CM1
9	B	274	LDA	C2-C1-N1-CM2
9	B	276	LDA	C2-C1-N1-O1
9	B	276	LDA	C2-C1-N1-CM1
9	B	276	LDA	C2-C1-N1-CM2
9	B	276	LDA	N1-C1-C2-C3
10	A	571	LMT	C2'-C1'-O1'-C1
10	A	571	LMT	O5'-C1'-O1'-C1
10	A	571	LMT	C2-C1-O1'-C1'
10	A	572	LMT	C2'-C1'-O1'-C1
10	A	572	LMT	O5'-C1'-O1'-C1
10	A	573	LMT	C2-C1-O1'-C1'
10	A	574	LMT	O5'-C1'-O1'-C1
10	A	574	LMT	C2-C1-O1'-C1'
10	B	277[B]	LMT	C2'-C1'-O1'-C1
10	B	277[B]	LMT	O5'-C1'-O1'-C1
10	D	121	LMT	C2'-C1'-O1'-C1
10	D	121	LMT	O5'-C1'-O1'-C1
10	A	570	LMT	C5'-C4'-O1B-C1B
10	A	575	LMT	C2B-C1B-O1B-C4'
5	A	560	HEA	C21-C22-C23-C25
10	A	574	LMT	O5B-C1B-O1B-C4'
10	A	569	LMT	C2B-C1B-O1B-C4'
5	A	559	HEA	C21-C22-C23-C25
5	A	559	HEA	C13-C14-C15-C26
5	A	560	HEA	C13-C14-C15-C26
5	A	560	HEA	C17-C18-C19-C27
10	B	278	LMT	O5B-C1B-O1B-C4'
10	A	569	LMT	O5B-C5B-C6B-O6B
10	A	575	LMT	O5B-C5B-C6B-O6B
10	B	278	LMT	O5B-C5B-C6B-O6B
10	A	571	LMT	C4B-C5B-C6B-O6B
10	A	572	LMT	C4'-C5'-C6'-O6'
10	A	575	LMT	C4B-C5B-C6B-O6B
10	A	568	LMT	O5'-C5'-C6'-O6'
10	A	574	LMT	O5B-C5B-C6B-O6B
10	A	572	LMT	O5'-C5'-C6'-O6'
10	A	574	LMT	O5'-C5'-C6'-O6'
10	A	575	LMT	O5'-C5'-C6'-O6'
10	A	569	LMT	C4'-C5'-C6'-O6'
10	A	571	LMT	O5B-C5B-C6B-O6B
10	B	279	LMT	O5B-C5B-C6B-O6B

Continued on next page...

Continued from previous page...

Mol	Chain	Res	Type	Atoms
10	B	279	LMT	O5'-C5'-C6'-O6'
10	D	121	LMT	O5B-C5B-C6B-O6B
10	B	279	LMT	C1-C2-C3-C4
10	A	574	LMT	C4'-C5'-C6'-O6'
10	B	279	LMT	C4B-C5B-C6B-O6B
10	B	279	LMT	C4'-C5'-C6'-O6'
10	A	568	LMT	C4'-C5'-C6'-O6'
10	A	569	LMT	C4B-C5B-C6B-O6B
10	B	277[A]	LMT	C2'-C1'-O1'-C1
10	D	121	LMT	C4'-C5'-C6'-O6'
10	A	574	LMT	C2B-C1B-O1B-C4'
10	A	570	LMT	C4B-C5B-C6B-O6B
10	A	574	LMT	C4B-C5B-C6B-O6B
10	B	278	LMT	C4B-C5B-C6B-O6B
10	A	568	LMT	O1'-C1-C2-C3
9	B	274	LDA	C4-C5-C6-C7
10	A	574	LMT	O1'-C1-C2-C3
10	D	121	LMT	C4B-C5B-C6B-O6B
10	A	569	LMT	O5'-C5'-C6'-O6'
10	B	278	LMT	C2B-C1B-O1B-C4'
10	B	278	LMT	C4'-C5'-C6'-O6'
10	A	575	LMT	O1'-C1-C2-C3
10	B	277[B]	LMT	O1'-C1-C2-C3
10	A	568	LMT	C3-C4-C5-C6
10	A	574	LMT	C2-C3-C4-C5
10	A	573	LMT	C6-C7-C8-C9
10	B	279	LMT	C5-C6-C7-C8
10	B	278	LMT	C5-C6-C7-C8
10	B	279	LMT	C2'-C1'-O1'-C1
10	A	568	LMT	C2-C3-C4-C5
10	A	570	LMT	C2-C3-C4-C5
10	B	277[A]	LMT	C6-C7-C8-C9
10	A	570	LMT	O5B-C5B-C6B-O6B
10	B	278	LMT	O5'-C5'-C6'-O6'
9	B	274	LDA	C7-C8-C9-C10
5	A	560	HEA	C18-C19-C20-C21
9	A	564	LDA	C11-C10-C9-C8
9	A	566	LDA	C3-C4-C5-C6
10	A	570	LMT	C5-C6-C7-C8
10	A	572	LMT	C6-C7-C8-C9
10	A	574	LMT	C6-C7-C8-C9
10	A	572	LMT	C3-C4-C5-C6

Continued on next page...

Continued from previous page...

Mol	Chain	Res	Type	Atoms
9	B	273	LDA	C5-C6-C7-C8
10	A	571	LMT	C3'-C4'-O1B-C1B
10	A	573	LMT	C3'-C4'-O1B-C1B
9	B	273	LDA	C4-C5-C6-C7
9	B	274	LDA	C5-C6-C7-C8
10	A	571	LMT	C5-C6-C7-C8
10	A	572	LMT	C11-C10-C9-C8
10	B	278	LMT	C6-C7-C8-C9
10	B	279	LMT	O5'-C1'-O1'-C1
5	A	560	HEA	C19-C20-C21-C22
10	A	570	LMT	C11-C10-C9-C8
9	B	273	LDA	C7-C8-C9-C10
10	A	571	LMT	C2-C3-C4-C5
10	B	277[A]	LMT	C11-C10-C9-C8
10	A	572	LMT	C7-C8-C9-C10
9	A	567	LDA	C2-C3-C4-C5
10	B	277[A]	LMT	C2-C1-O1'-C1'
9	A	565	LDA	C2-C3-C4-C5
10	B	277[A]	LMT	C7-C8-C9-C10
10	B	278	LMT	C11-C10-C9-C8
10	A	573	LMT	C2-C3-C4-C5
10	B	278	LMT	C2-C3-C4-C5
10	A	575	LMT	C4'-C5'-C6'-O6'
9	A	566	LDA	C1-C2-C3-C4
10	A	569	LMT	C11-C10-C9-C8
10	A	571	LMT	C6-C7-C8-C9
10	A	574	LMT	C1-C2-C3-C4
10	D	121	LMT	O5B-C1B-O1B-C4'
10	B	277[A]	LMT	C1-C2-C3-C4
10	B	279	LMT	C4-C5-C6-C7
10	A	571	LMT	C1-C2-C3-C4
9	A	565	LDA	C6-C7-C8-C9
10	A	575	LMT	C5-C6-C7-C8
10	A	572	LMT	C1-C2-C3-C4
9	B	276	LDA	C2-C3-C4-C5
10	A	572	LMT	C4-C5-C6-C7
10	A	573	LMT	C3-C4-C5-C6
10	A	573	LMT	C5'-C4'-O1B-C1B
9	A	564	LDA	C6-C7-C8-C9
10	B	277[A]	LMT	C2-C3-C4-C5
10	A	568	LMT	C6-C7-C8-C9
10	A	568	LMT	C7-C8-C9-C10

Continued on next page...

Continued from previous page...

Mol	Chain	Res	Type	Atoms
10	B	279	LMT	C7-C8-C9-C10
9	A	565	LDA	C11-C10-C9-C8
9	A	567	LDA	C7-C8-C9-C10
9	B	275	LDA	C6-C7-C8-C9
9	B	276	LDA	C3-C4-C5-C6
9	B	276	LDA	C7-C8-C9-C10
10	A	571	LMT	C5'-C4'-O1B-C1B
10	A	571	LMT	O5'-C5'-C6'-O6'
9	A	564	LDA	C9-C10-C11-C12
10	A	570	LMT	C9-C10-C11-C12
10	A	571	LMT	C11-C10-C9-C8
10	B	277[A]	LMT	C4-C5-C6-C7
10	A	570	LMT	C2B-C1B-O1B-C4'
10	B	278	LMT	C9-C10-C11-C12
10	A	568	LMT	C5-C6-C7-C8
10	A	572	LMT	O1'-C1-C2-C3
10	A	572	LMT	O5B-C5B-C6B-O6B
10	A	574	LMT	C2'-C1'-O1'-C1
9	B	275	LDA	C9-C10-C11-C12
9	A	564	LDA	C5-C6-C7-C8
9	B	273	LDA	C1-C2-C3-C4
10	A	573	LMT	C9-C10-C11-C12
10	A	570	LMT	O5B-C1B-O1B-C4'
10	A	573	LMT	C11-C10-C9-C8
10	A	572	LMT	C2-C3-C4-C5
9	A	566	LDA	N1-C1-C2-C3
9	B	273	LDA	N1-C1-C2-C3
9	B	275	LDA	N1-C1-C2-C3
10	D	121	LMT	C3'-C4'-O1B-C1B
9	A	567	LDA	C11-C10-C9-C8
10	B	279	LMT	C2-C1-O1'-C1'
9	A	567	LDA	C5-C6-C7-C8
9	A	567	LDA	C9-C10-C11-C12
9	B	272	LDA	C9-C10-C11-C12
9	A	566	LDA	C9-C10-C11-C12
10	B	279	LMT	C6-C7-C8-C9
10	A	575	LMT	C9-C10-C11-C12
10	D	121	LMT	O5'-C5'-C6'-O6'
10	A	574	LMT	C11-C10-C9-C8
10	A	569	LMT	C9-C10-C11-C12
5	A	560	HEA	C15-C16-C17-C18
9	A	567	LDA	C3-C4-C5-C6

Continued on next page...

Continued from previous page...

Mol	Chain	Res	Type	Atoms
10	B	278	LMT	C1-C2-C3-C4
9	A	565	LDA	C2-C1-N1-CM1
9	B	272	LDA	C2-C1-N1-CM2
9	A	565	LDA	C7-C8-C9-C10
10	D	121	LMT	C5'-C4'-O1B-C1B
10	A	574	LMT	C9-C10-C11-C12
9	B	275	LDA	C4-C5-C6-C7
10	D	121	LMT	C9-C10-C11-C12
10	A	568	LMT	C1-C2-C3-C4
10	A	574	LMT	C7-C8-C9-C10
9	B	272	LDA	C1-C2-C3-C4
10	D	121	LMT	C5-C6-C7-C8
10	A	575	LMT	C4-C5-C6-C7
9	A	564	LDA	C4-C5-C6-C7
9	A	565	LDA	C2-C1-N1-O1
9	A	567	LDA	C2-C1-N1-O1
9	B	274	LDA	C2-C1-N1-O1
10	A	568	LMT	C2-C1-O1'-C1'
10	A	575	LMT	C2-C1-O1'-C1'
9	A	566	LDA	C6-C7-C8-C9
10	A	573	LMT	C4-C5-C6-C7
10	B	279	LMT	C11-C10-C9-C8
9	A	565	LDA	C9-C10-C11-C12
9	B	274	LDA	C11-C10-C9-C8
10	A	569	LMT	C1-C2-C3-C4
10	A	569	LMT	O5B-C1B-O1B-C4'
10	A	575	LMT	C3-C4-C5-C6
9	B	276	LDA	C5-C6-C7-C8
10	D	121	LMT	C1-C2-C3-C4
10	A	575	LMT	C6-C7-C8-C9
9	B	274	LDA	C2-C3-C4-C5
10	D	121	LMT	C2B-C1B-O1B-C4'
10	A	570	LMT	O1'-C1-C2-C3
5	A	560	HEA	CAD-CBD-CGD-O1D
9	B	272	LDA	C3-C4-C5-C6
10	B	278	LMT	C4-C5-C6-C7
10	D	121	LMT	C3-C4-C5-C6
5	A	560	HEA	CAD-CBD-CGD-O2D
5	A	559	HEA	C26-C15-C16-C17
9	A	564	LDA	C2-C3-C4-C5
10	A	571	LMT	C9-C10-C11-C12
10	A	573	LMT	C5-C6-C7-C8

Continued on next page...

Continued from previous page...

Mol	Chain	Res	Type	Atoms
5	A	559	HEA	CAD-CBD-CGD-O2D
5	A	559	HEA	CAD-CBD-CGD-O1D
10	A	571	LMT	C3-C4-C5-C6
5	A	560	HEA	C12-C11-C3B-C4B
10	A	575	LMT	C1-C2-C3-C4
10	A	575	LMT	C11-C10-C9-C8
9	B	274	LDA	C1-C2-C3-C4
5	A	559	HEA	C27-C19-C20-C21
10	B	277[A]	LMT	O5B-C5B-C6B-O6B
10	B	277[B]	LMT	O5B-C5B-C6B-O6B
5	A	560	HEA	CAA-CBA-CGA-O2A
10	A	570	LMT	C4'-C5'-C6'-O6'
10	A	575	LMT	O5B-C1B-O1B-C4'
5	A	559	HEA	CAA-CBA-CGA-O2A
5	A	559	HEA	CAA-CBA-CGA-O1A
5	A	560	HEA	CAA-CBA-CGA-O1A
10	A	568	LMT	C2B-C1B-O1B-C4'
9	A	566	LDA	C7-C8-C9-C10
10	B	277[A]	LMT	C5-C6-C7-C8
9	B	273	LDA	C6-C7-C8-C9
9	B	274	LDA	C9-C10-C11-C12
10	B	278	LMT	C2-C1-O1'-C1'
10	B	277[B]	LMT	C2-C3-C4-C5

There are no ring outliers.

20 monomers are involved in 78 short contacts:

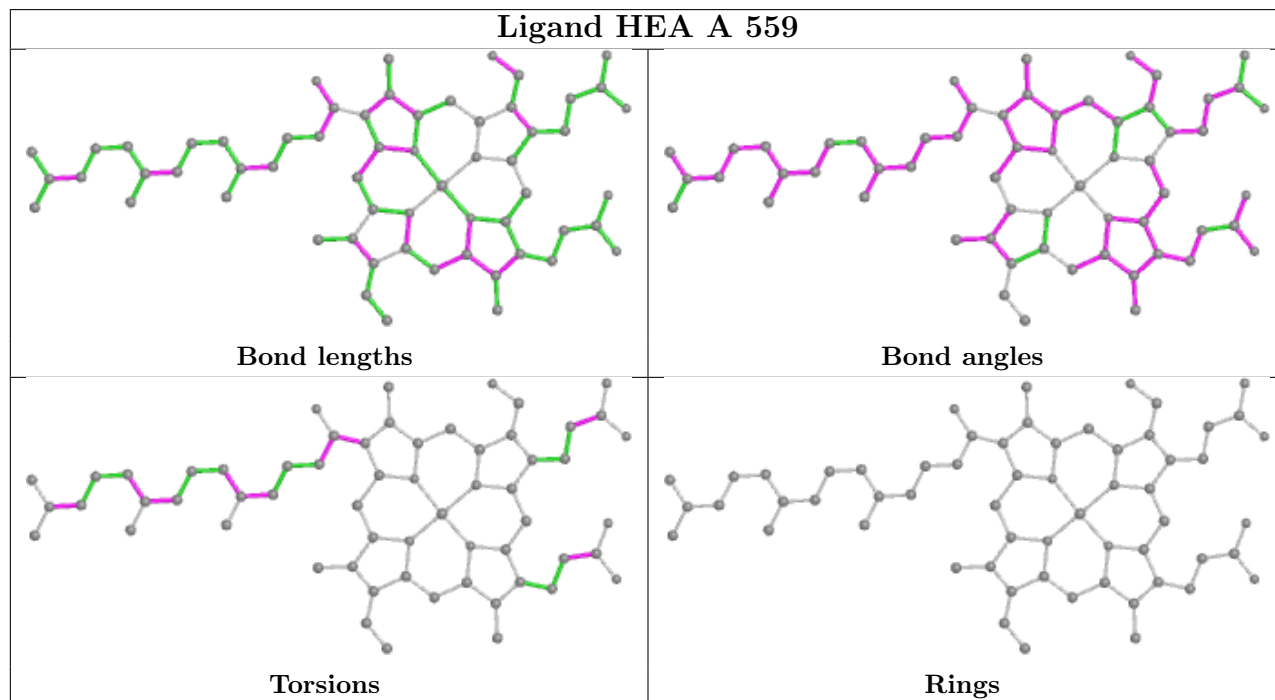
Mol	Chain	Res	Type	Clashes	Symm-Clashes
5	A	559	HEA	8	0
9	B	276	LDA	1	0
9	A	565	LDA	1	0
9	B	274	LDA	4	0
9	B	273	LDA	3	0
10	A	571	LMT	3	0
10	A	570	LMT	3	0
10	B	278	LMT	2	0
9	B	275	LDA	4	0
10	A	568	LMT	2	0
10	A	574	LMT	9	0
10	A	569	LMT	2	0
9	A	566	LDA	3	0
9	A	564	LDA	1	0

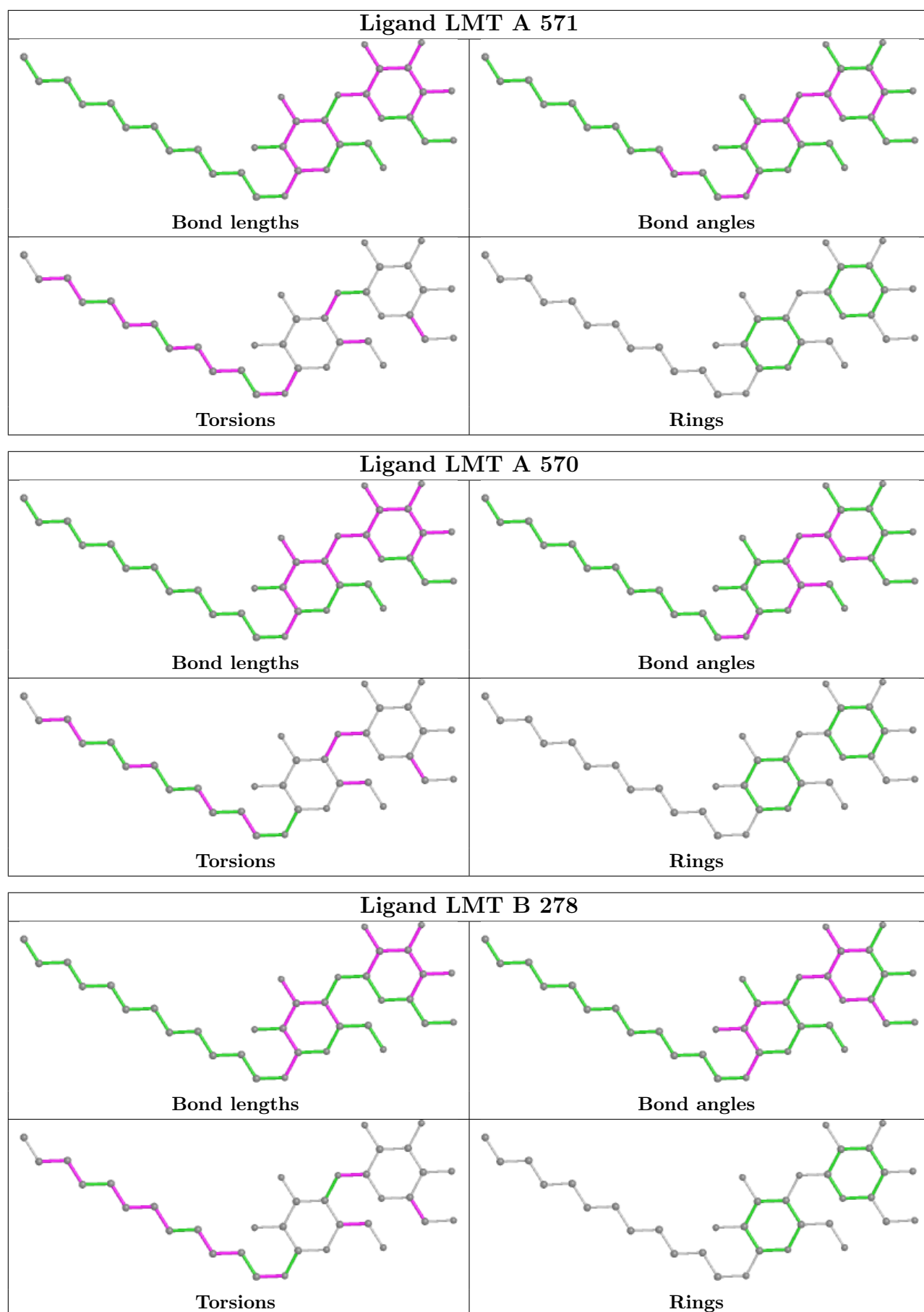
Continued on next page...

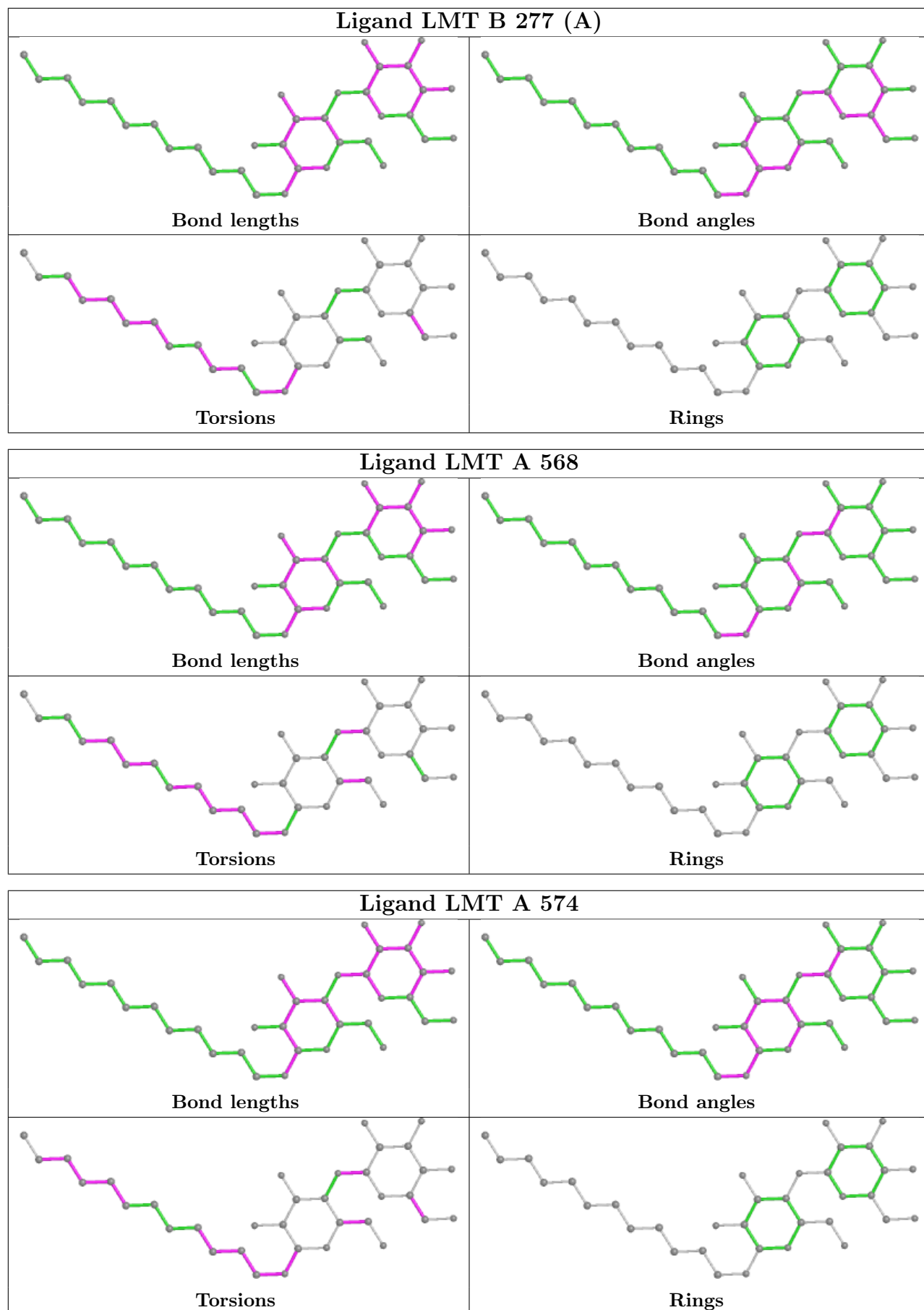
Continued from previous page...

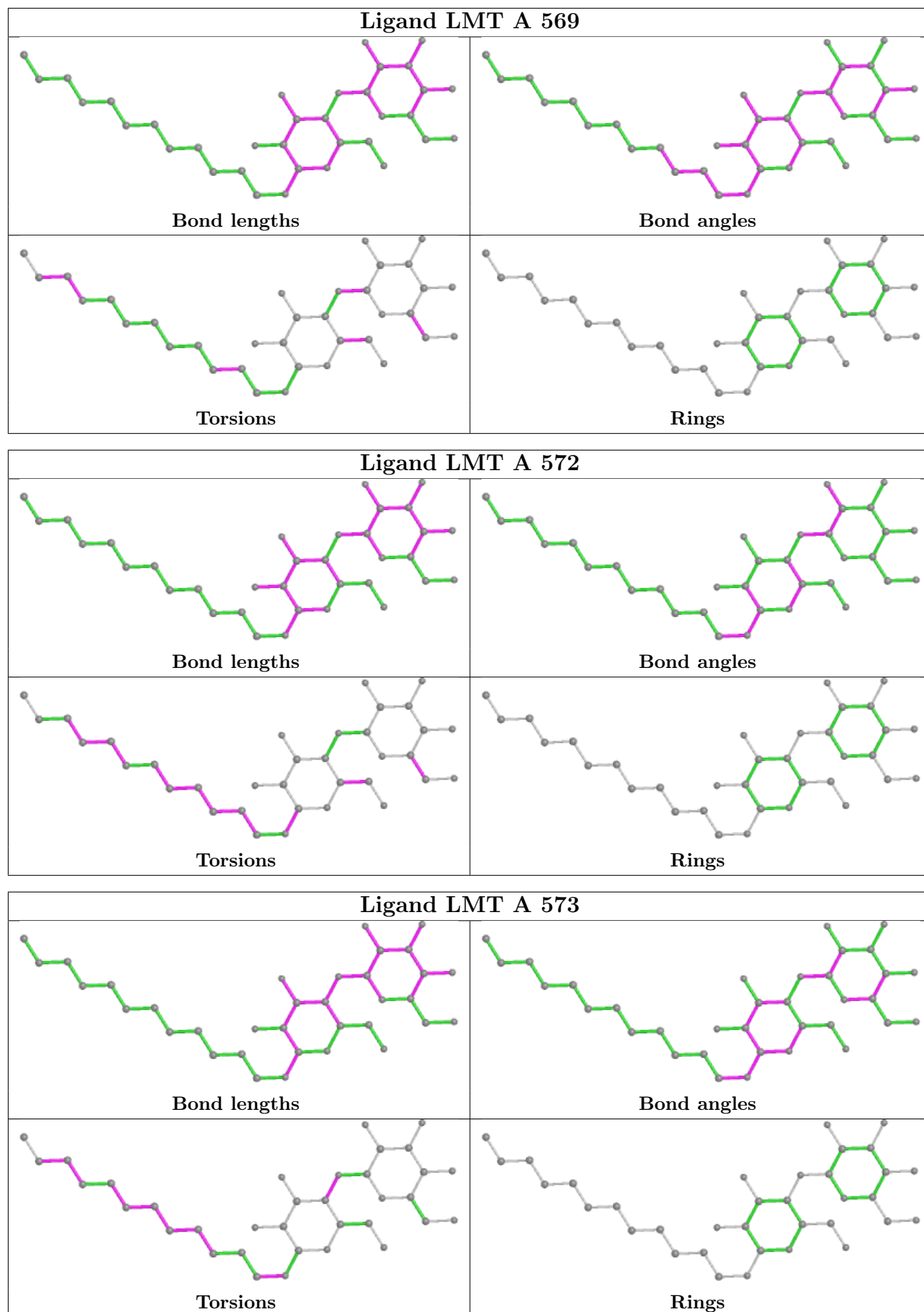
Mol	Chain	Res	Type	Clashes	Symm-Clashes
10	A	572	LMT	3	0
5	A	560	HEA	16	0
10	A	575	LMT	5	0
10	D	121	LMT	3	0
10	B	279	LMT	6	0
9	B	272	LDA	4	0

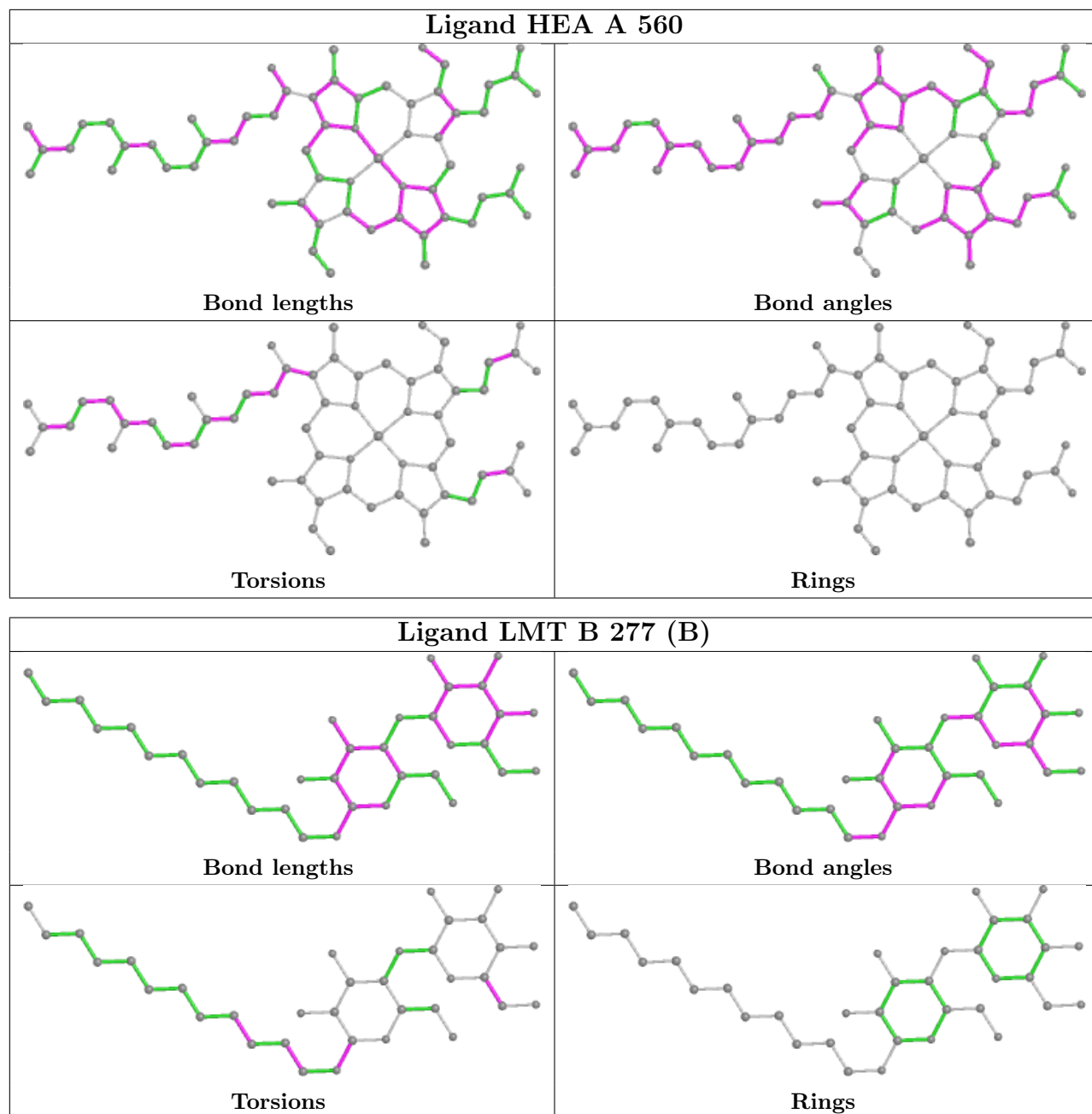
The following is a two-dimensional graphical depiction of Mogul quality analysis of bond lengths, bond angles, torsion angles, and ring geometry for all instances of the Ligand of Interest. In addition, ligands with molecular weight > 250 and outliers as shown on the validation Tables will also be included. For torsion angles, if less than 5% of the Mogul distribution of torsion angles is within 10 degrees of the torsion angle in question, then that torsion angle is considered an outlier. Any bond that is central to one or more torsion angles identified as an outlier by Mogul will be highlighted in the graph. For rings, the root-mean-square deviation (RMSD) between the ring in question and similar rings identified by Mogul is calculated over all ring torsion angles. If the average RMSD is greater than 60 degrees and the minimal RMSD between the ring in question and any Mogul-identified rings is also greater than 60 degrees, then that ring is considered an outlier. The outliers are highlighted in purple. The color gray indicates Mogul did not find sufficient equivalents in the CSD to analyse the geometry.

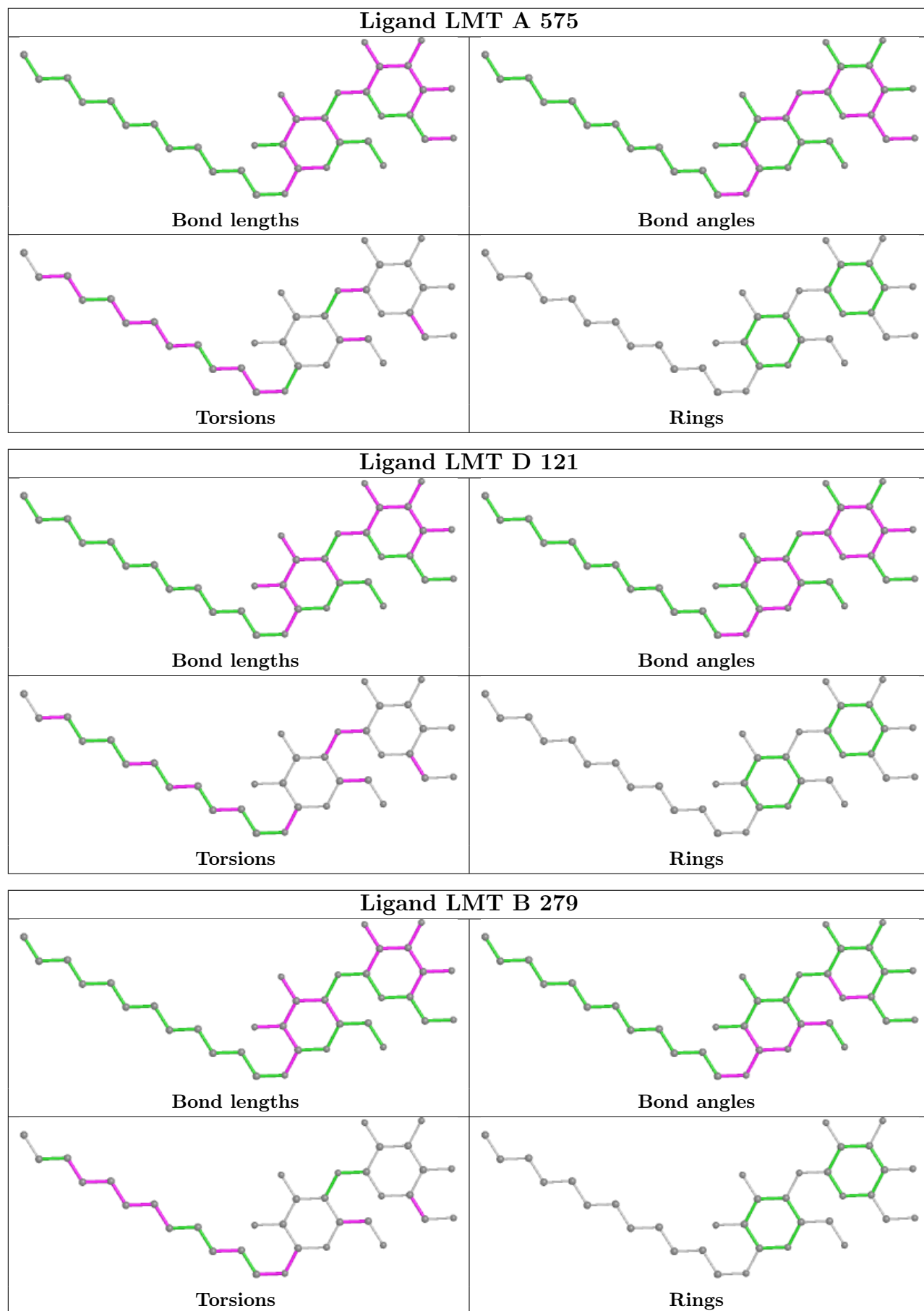












5.7 Other polymers [i](#)

There are no such residues in this entry.

5.8 Polymer linkage issues [i](#)

There are no chain breaks in this entry.

6 Fit of model and data

6.1 Protein, DNA and RNA chains

In the following table, the column labelled ‘#RSRZ > 2’ contains the number (and percentage) of RSRZ outliers, followed by percent RSRZ outliers for the chain as percentile scores relative to all X-ray entries and entries of similar resolution. The OWAB column contains the minimum, median, 95th percentile and maximum values of the occupancy-weighted average B-factor per residue. The column labelled ‘Q < 0.9’ lists the number of (and percentage) of residues with an average occupancy less than 0.9.

Mol	Chain	Analysed	<RSRZ>	#RSRZ>2	OWAB(Å ²)	Q<0.9
1	A	530/558 (94%)	-0.16	28 (5%) 26 33	41, 55, 79, 125	0
2	B	253/298 (84%)	-0.46	2 (0%) 86 89	36, 50, 70, 86	0
3	C	119/127 (93%)	0.16	9 (7%) 13 18	39, 60, 82, 112	0
4	D	109/120 (90%)	-0.15	1 (0%) 84 88	42, 57, 71, 82	0
All	All	1011/1103 (91%)	-0.20	40 (3%) 38 45	36, 55, 77, 125	0

All (40) RSRZ outliers are listed below:

Mol	Chain	Res	Type	RSRZ
3	C	119	ALA	8.1
1	A	545	THR	7.9
1	A	17	GLY	7.2
1	A	18	PHE	6.4
1	A	546	LEU	6.4
3	C	118	SER	6.4
1	A	20	THR	5.9
1	A	19	PHE	4.8
1	A	177	TYR	3.9
1	A	544	GLU	3.9
1	A	251	PHE	3.7
1	A	541	HIS	3.4
2	B	1	GLN	3.2
1	A	259	ALA	3.1
3	C	117	SER	3.0
1	A	543	PHE	3.0
1	A	518	ASN	2.8
1	A	156	ASP	2.7
3	C	13	GLN	2.7
1	A	211	GLY	2.7
1	A	175	ALA	2.7

Continued on next page...

Continued from previous page...

Mol	Chain	Res	Type	RSRZ
1	A	261	GLY	2.6
3	C	37	VAL	2.5
1	A	252	GLY	2.5
4	D	57	GLY	2.4
1	A	213	THR	2.4
1	A	129	ARG	2.4
1	A	69	GLY	2.4
3	C	36	TRP	2.3
1	A	21	ARG	2.3
3	C	56	GLY	2.2
1	A	362	MET	2.2
3	C	48	VAL	2.1
1	A	258	PRO	2.1
1	A	22	TRP	2.1
2	B	63	ARG	2.1
1	A	540	GLU	2.1
3	C	1	GLU	2.0
1	A	516	ARG	2.0
1	A	512	PHE	2.0

6.2 Non-standard residues in protein, DNA, RNA chains [i](#)

There are no non-standard protein/DNA/RNA residues in this entry.

6.3 Carbohydrates [i](#)

There are no monosaccharides in this entry.

6.4 Ligands [i](#)

In the following table, the Atoms column lists the number of modelled atoms in the group and the number defined in the chemical component dictionary. The B-factors column lists the minimum, median, 95th percentile and maximum values of B factors of atoms in the group. The column labelled 'Q< 0.9' lists the number of atoms with occupancy less than 0.9.

Mol	Type	Chain	Res	Atoms	RSCC	RSR	B-factors(Å ²)	Q<0.9
10	LMT	A	575	35/35	0.29	0.46	97,142,149,150	0
10	LMT	A	573	35/35	0.36	0.42	65,102,131,132	0
10	LMT	A	572	35/35	0.36	0.42	84,112,123,123	0
10	LMT	A	571	35/35	0.39	0.44	81,116,145,146	0

Continued on next page...

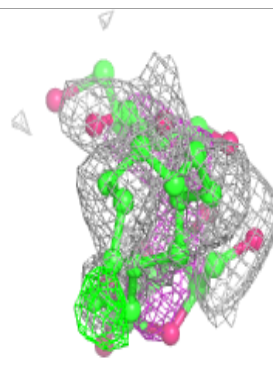
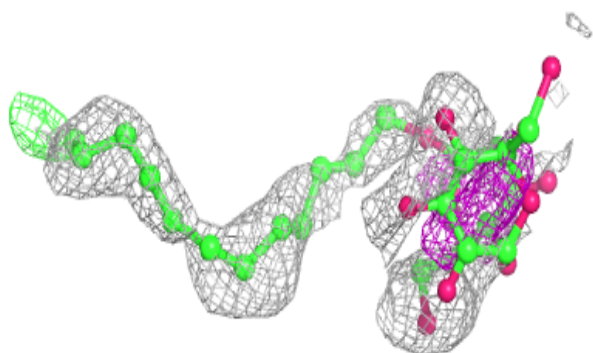
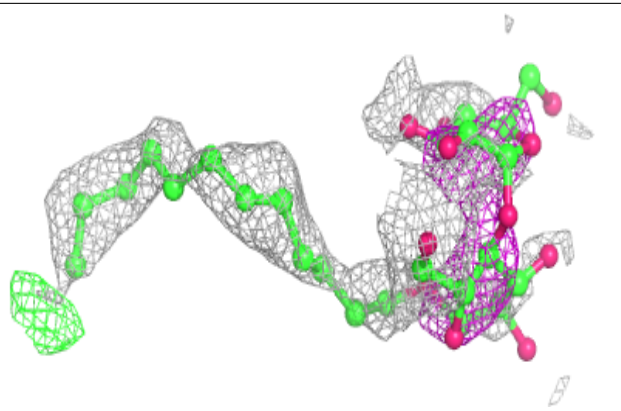
Continued from previous page...

Mol	Type	Chain	Res	Atoms	RSCC	RSR	B-factors(Å ²)	Q<0.9
10	LMT	A	574	35/35	0.43	0.45	64,134,147,148	0
9	LDA	B	272	16/16	0.44	0.38	46,67,114,117	0
9	LDA	A	564	16/16	0.44	0.43	68,75,106,109	0
9	LDA	B	276	16/16	0.48	0.41	121,128,130,130	0
10	LMT	D	121	35/35	0.54	0.41	93,103,108,110	0
10	LMT	A	569	35/35	0.63	0.36	84,98,111,111	0
9	LDA	A	565	16/16	0.65	0.31	72,85,94,95	0
9	LDA	B	274	16/16	0.65	0.28	83,98,111,111	0
9	LDA	A	567	16/16	0.66	0.27	96,103,104,105	0
9	LDA	A	566	16/16	0.68	0.33	92,97,113,113	0
10	LMT	A	570	35/35	0.70	0.27	69,104,122,125	0
9	LDA	B	275	16/16	0.74	0.27	55,81,113,115	0
10	LMT	B	279	35/35	0.76	0.40	68,120,136,137	0
9	LDA	B	273	16/16	0.76	0.28	81,85,98,100	0
10	LMT	A	568	35/35	0.78	0.34	83,103,108,109	0
10	LMT	B	278	35/35	0.84	0.29	68,86,99,100	0
10	LMT	B	277[B]	35/35	0.85	0.28	65,78,87,88	12
10	LMT	B	277[A]	35/35	0.85	0.28	67,81,87,88	12
5	HEA	A	559	60/60	0.95	0.16	37,47,51,56	0
5	HEA	A	560	60/60	0.96	0.13	34,52,54,62	0
8	CA	A	563	1/1	0.97	0.06	53,53,53,53	0
7	MG	A	562	1/1	0.98	0.15	28,28,28,28	0
6	CU	B	270	1/1	0.99	0.07	48,48,48,48	0
6	CU	B	271	1/1	0.99	0.06	50,50,50,50	0
11	PER	A	576	2/2	0.99	0.10	49,49,49,56	0
6	CU	A	561	1/1	1.00	0.03	54,54,54,54	0

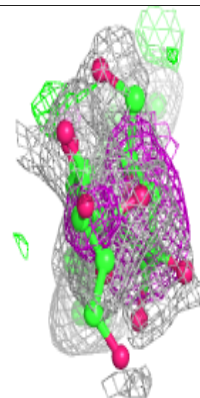
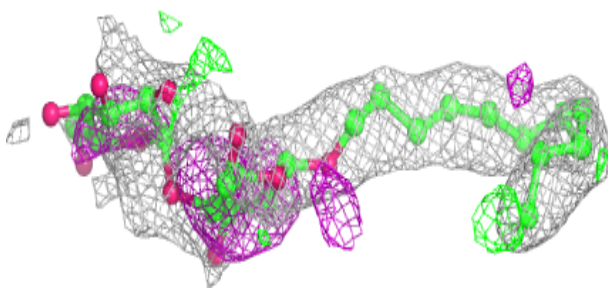
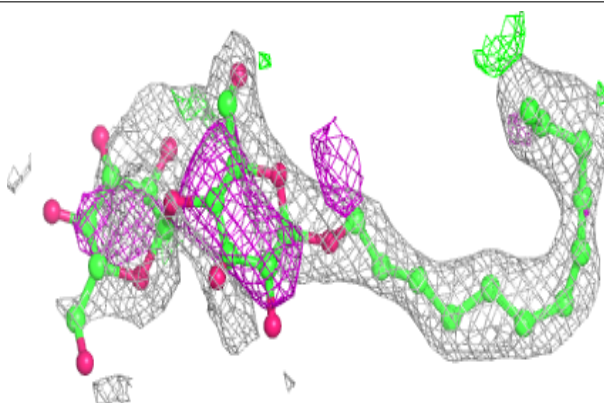
The following is a graphical depiction of the model fit to experimental electron density of all instances of the Ligand of Interest. In addition, ligands with molecular weight > 250 and outliers as shown on the geometry validation Tables will also be included. Each fit is shown from different orientation to approximate a three-dimensional view.

Electron density around LMT A 575:

$2mF_o-DF_c$ (at 0.7 rmsd) in gray
 mF_o-DF_c (at 3 rmsd) in purple (negative)
and green (positive)

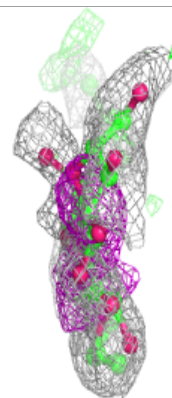
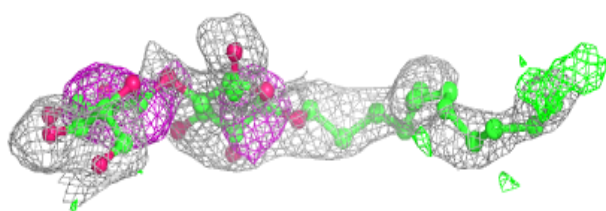
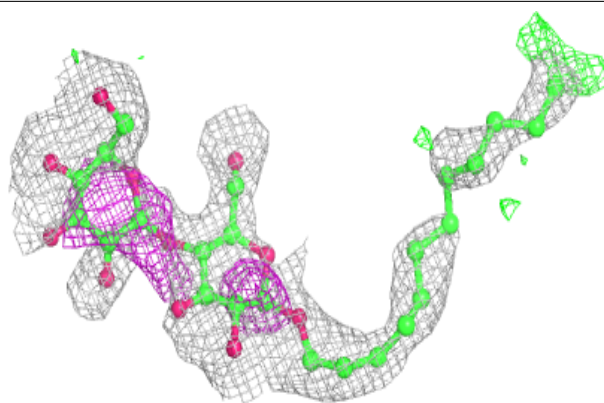
**Electron density around LMT A 573:**

$2mF_o-DF_c$ (at 0.7 rmsd) in gray
 mF_o-DF_c (at 3 rmsd) in purple (negative)
and green (positive)

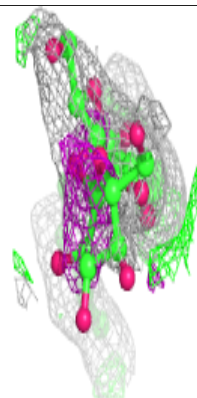
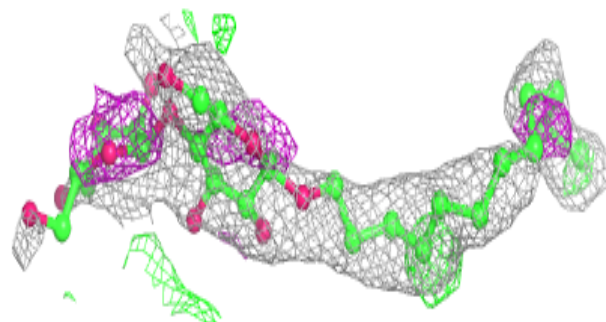
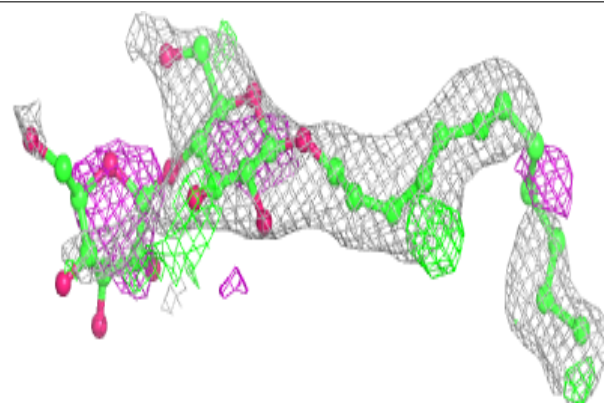


Electron density around LMT A 572:

$2mF_o-DF_c$ (at 0.7 rmsd) in gray
 mF_o-DF_c (at 3 rmsd) in purple (negative)
and green (positive)

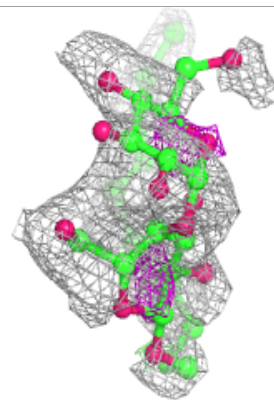
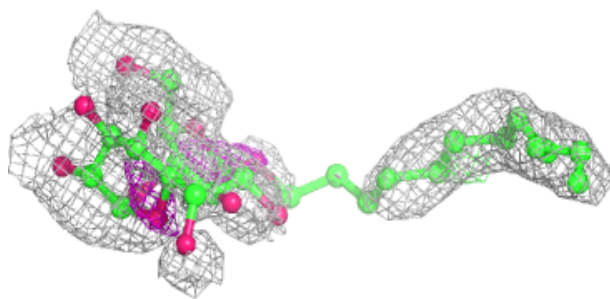
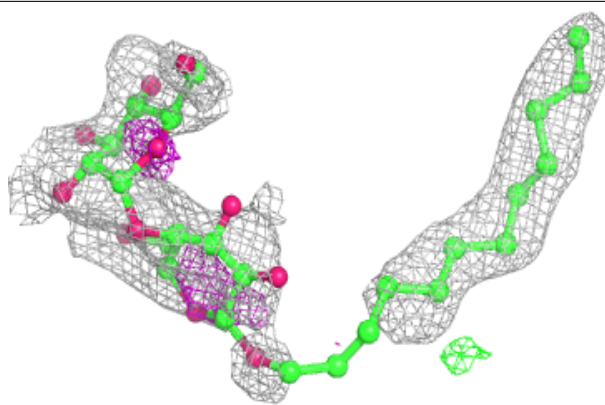
**Electron density around LMT A 571:**

$2mF_o-DF_c$ (at 0.7 rmsd) in gray
 mF_o-DF_c (at 3 rmsd) in purple (negative)
and green (positive)

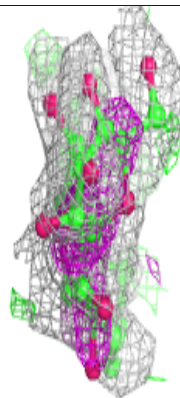
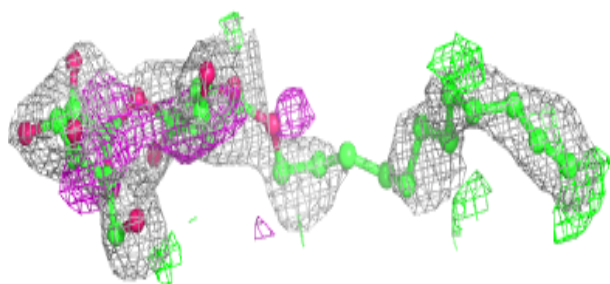
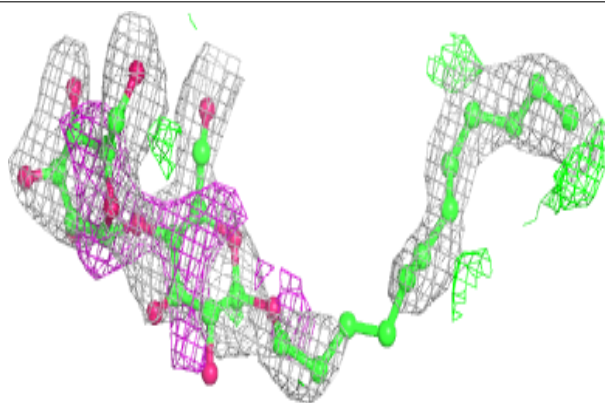


Electron density around LMT A 574:

$2mF_o-DF_c$ (at 0.7 rmsd) in gray
 mF_o-DF_c (at 3 rmsd) in purple (negative)
and green (positive)

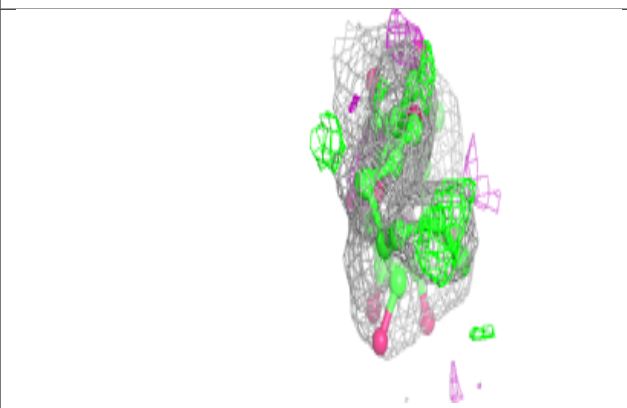
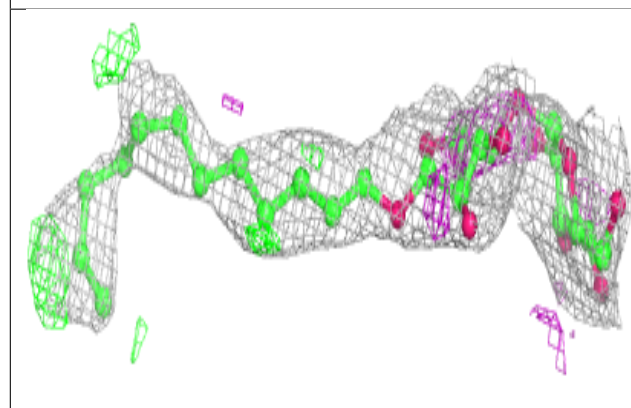
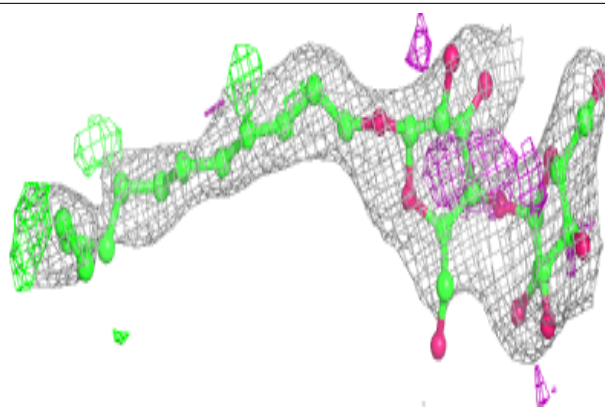
**Electron density around LMT D 121:**

$2mF_o-DF_c$ (at 0.7 rmsd) in gray
 mF_o-DF_c (at 3 rmsd) in purple (negative)
and green (positive)

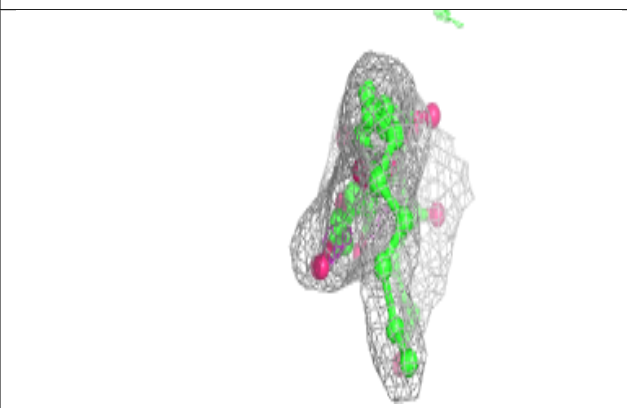
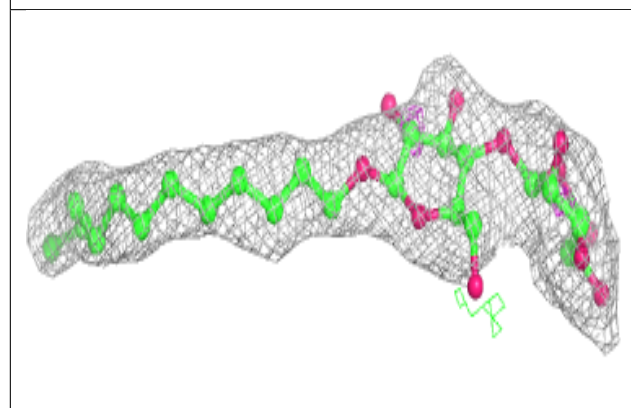
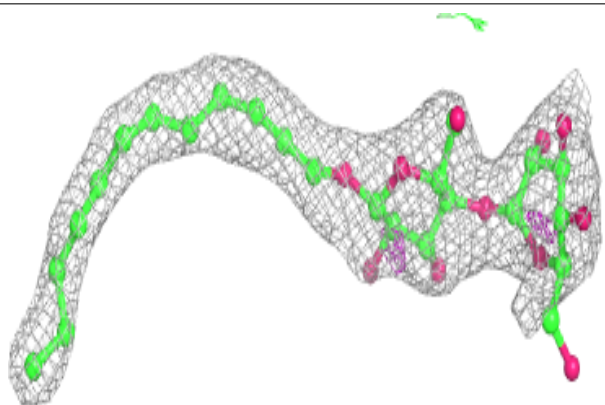


Electron density around LMT A 569:

$2mF_o-DF_c$ (at 0.7 rmsd) in gray
 mF_o-DF_c (at 3 rmsd) in purple (negative)
and green (positive)

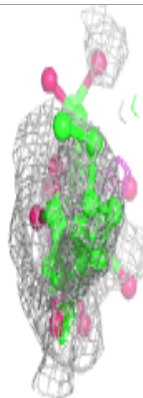
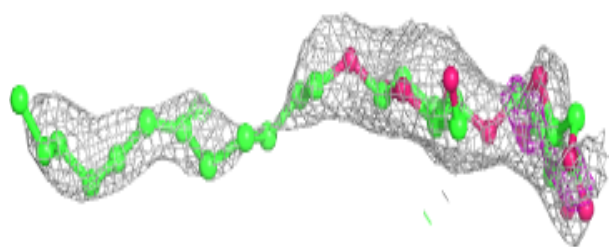
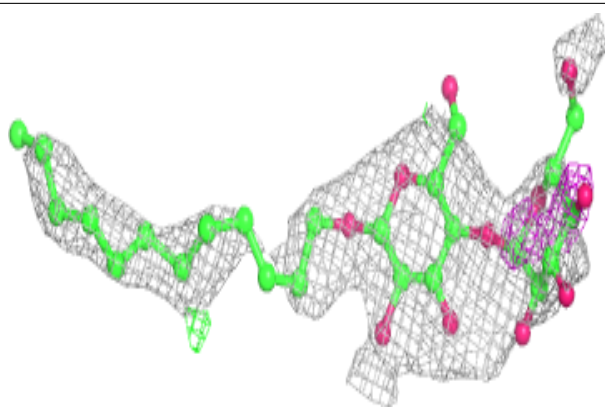
**Electron density around LMT A 570:**

$2mF_o-DF_c$ (at 0.7 rmsd) in gray
 mF_o-DF_c (at 3 rmsd) in purple (negative)
and green (positive)

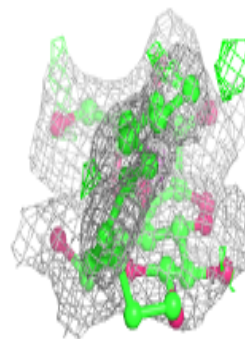
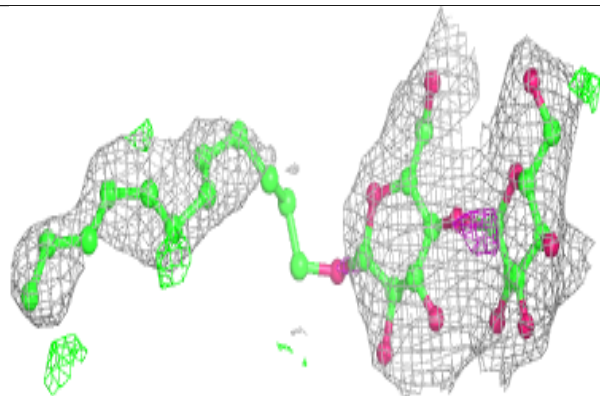
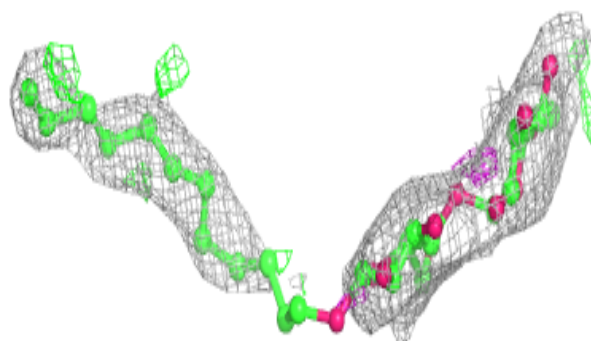


Electron density around LMT B 279:

$2mF_o-DF_c$ (at 0.7 rmsd) in gray
 mF_o-DF_c (at 3 rmsd) in purple (negative)
and green (positive)

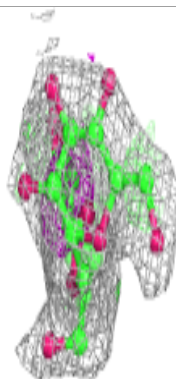
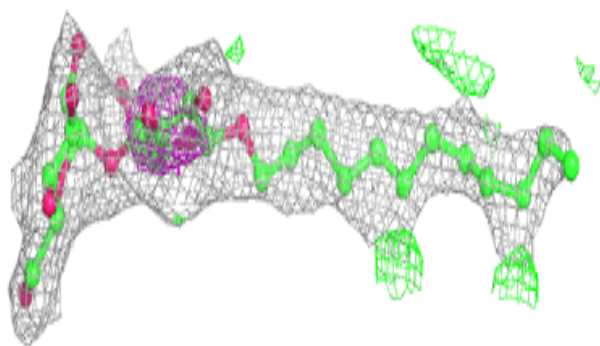
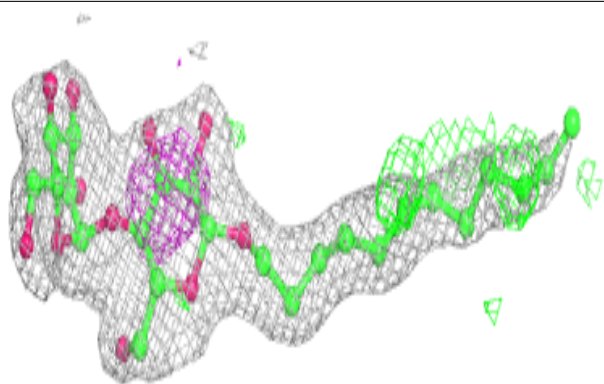
**Electron density around LMT A 568:**

$2mF_o-DF_c$ (at 0.7 rmsd) in gray
 mF_o-DF_c (at 3 rmsd) in purple (negative)
and green (positive)

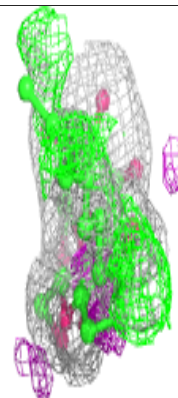
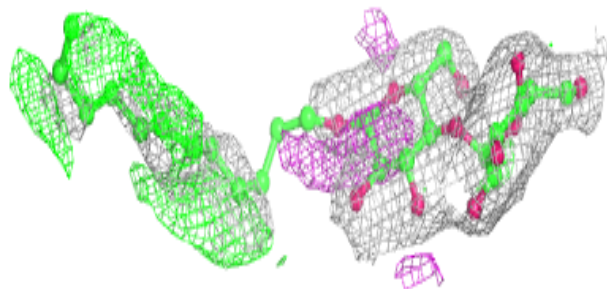
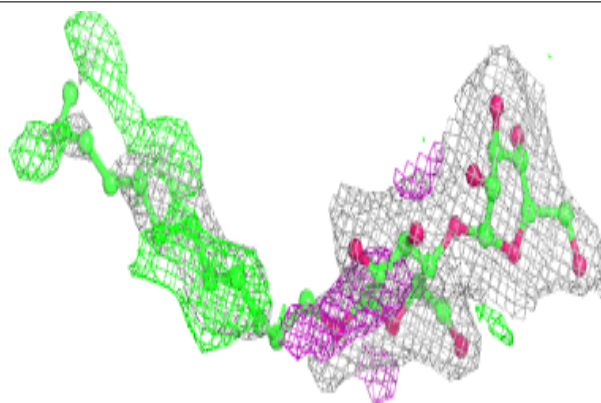


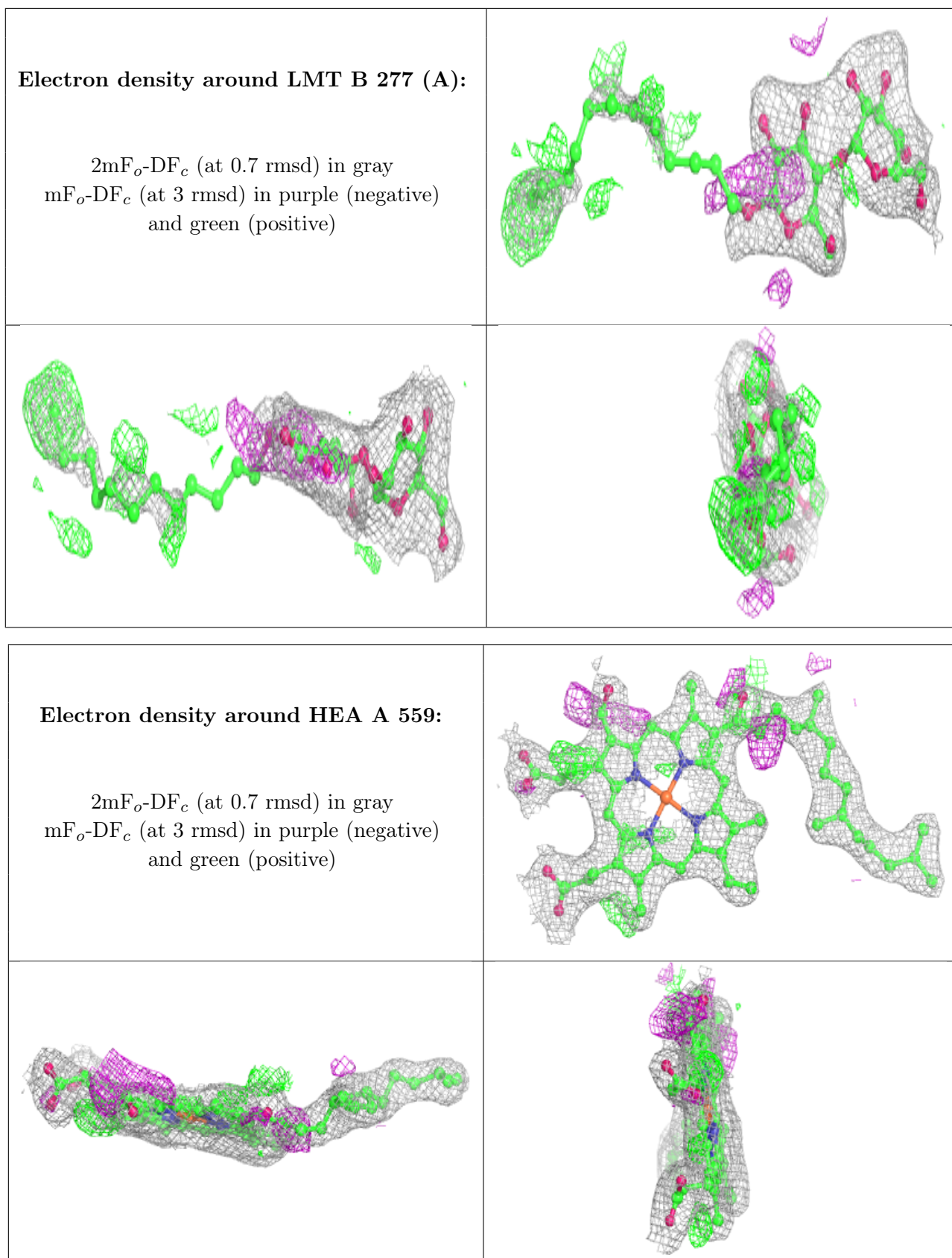
Electron density around LMT B 278:

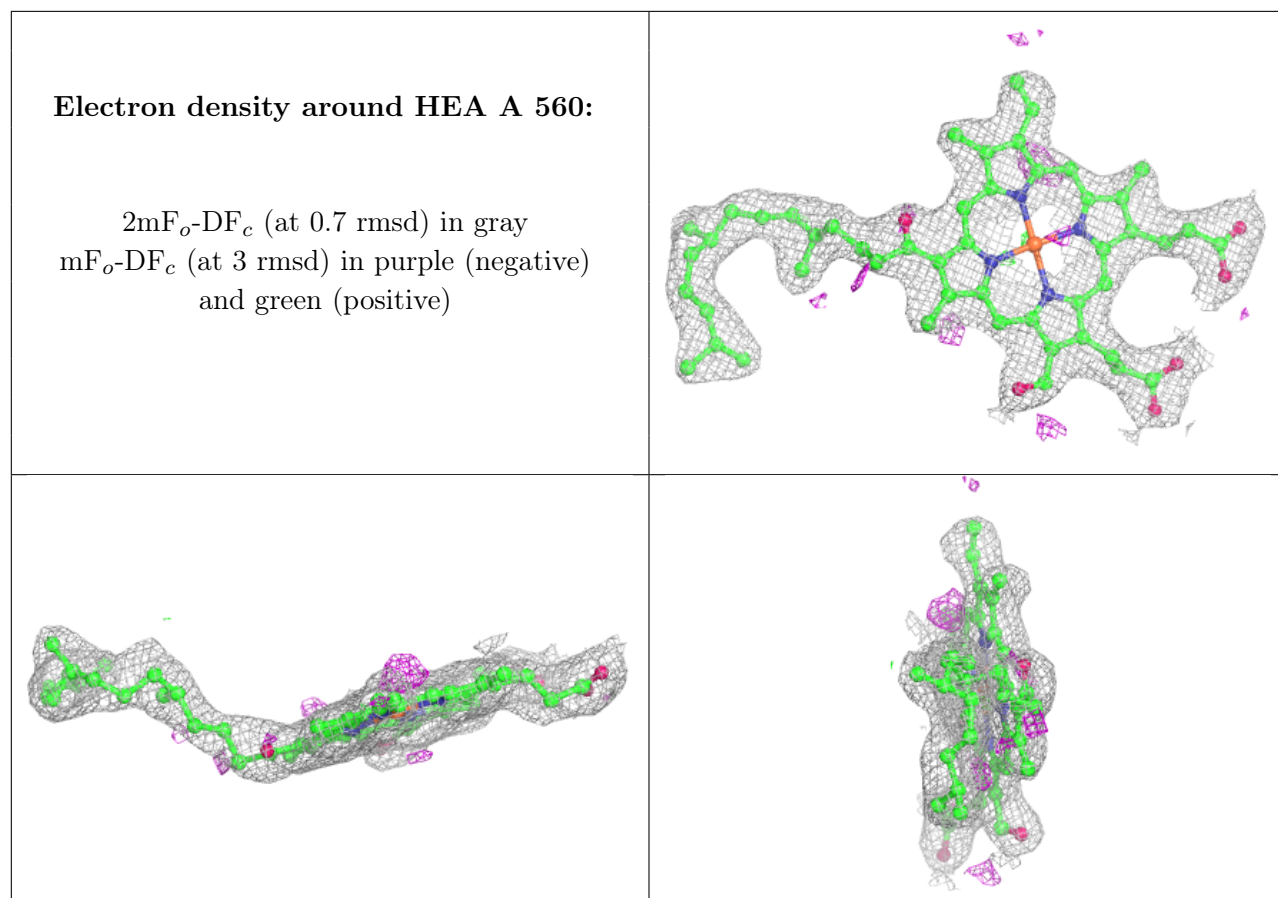
$2mF_o-DF_c$ (at 0.7 rmsd) in gray
 mF_o-DF_c (at 3 rmsd) in purple (negative)
and green (positive)

**Electron density around LMT B 277 (B):**

$2mF_o-DF_c$ (at 0.7 rmsd) in gray
 mF_o-DF_c (at 3 rmsd) in purple (negative)
and green (positive)







6.5 Other polymers [i](#)

There are no such residues in this entry.