



Full wwPDB X-ray Structure Validation Report ⓘ

Feb 11, 2024 – 04:39 PM EST

PDB ID : 3EEL
Title : Candida glabrata Dihydrofolate Reductase complexed with 2,4-diamino-5-[3-methyl-3-(3-methoxy-5-(3,5-dimethylphenyl)phenyl)prop-1-ynyl]-6-methylpyrimidine(UCP11153TM) and NADPH
Authors : Liu, J.; Anderson, A.
Deposited on : 2008-09-04
Resolution : 1.95 Å(reported)

This is a Full wwPDB X-ray Structure Validation Report for a publicly released PDB entry.

We welcome your comments at validation@mail.wwpdb.org

A user guide is available at

<https://www.wwpdb.org/validation/2017/XrayValidationReportHelp>

with specific help available everywhere you see the ⓘ symbol.

The types of validation reports are described at

<http://www.wwpdb.org/validation/2017/FAQs#types>.

The following versions of software and data (see [references ⓘ](#)) were used in the production of this report:

MolProbity : 4.02b-467
Mogul : 1.8.5 (274361), CSD as541be (2020)
Xtriage (Phenix) : 1.13
EDS : 2.36
buster-report : 1.1.7 (2018)
Percentile statistics : 20191225.v01 (using entries in the PDB archive December 25th 2019)
Refmac : 5.8.0158
CCP4 : 7.0.044 (Gargrove)
Ideal geometry (proteins) : Engh & Huber (2001)
Ideal geometry (DNA, RNA) : Parkinson et al. (1996)
Validation Pipeline (wwPDB-VP) : 2.36

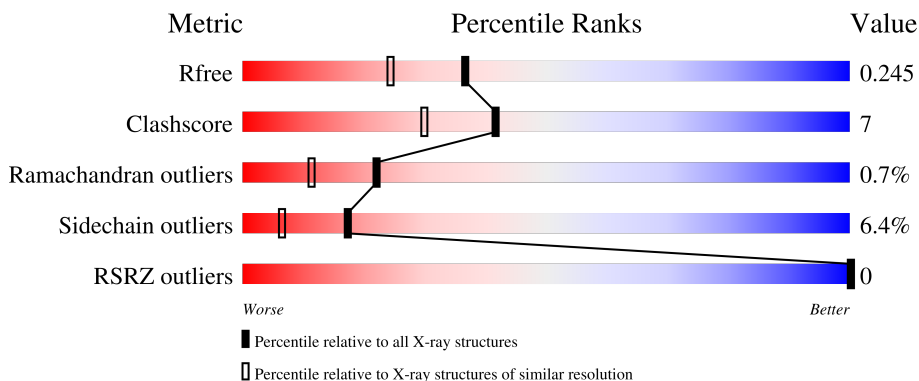
1 Overall quality at a glance

The following experimental techniques were used to determine the structure:

X-RAY DIFFRACTION



The reported resolution of this entry is 1.95 Å.

Percentile scores (ranging between 0-100) for global validation metrics of the entry are shown in the following graphic. The table shows the number of entries on which the scores are based.



Metric	Whole archive (#Entries)	Similar resolution (#Entries, resolution range(Å))
R_{free}	130704	2580 (1.96-1.96)
Clashscore	141614	2705 (1.96-1.96)
Ramachandran outliers	138981	2678 (1.96-1.96)
Sidechain outliers	138945	2678 (1.96-1.96)
RSRZ outliers	127900	2539 (1.96-1.96)

The table below summarises the geometric issues observed across the polymeric chains and their fit to the electron density. The red, orange, yellow and green segments of the lower bar indicate the fraction of residues that contain outliers for ≥ 3 , 2, 1 and 0 types of geometric quality criteria respectively. A grey segment represents the fraction of residues that are not modelled. The numeric value for each fraction is indicated below the corresponding segment, with a dot representing fractions $\leq 5\%$. The upper red bar (where present) indicates the fraction of residues that have poor fit to the electron density. The numeric value is given above the bar.

Mol	Chain	Length	Quality of chain
1	A	227	 74% 21% . .
1	B	227	 77% 16% 5% ..

2 Entry composition [i](#)

There are 4 unique types of molecules in this entry. The entry contains 4104 atoms, of which 0 are hydrogens and 0 are deuteriums.

In the tables below, the ZeroOcc column contains the number of atoms modelled with zero occupancy, the AltConf column contains the number of residues with at least one atom in alternate conformation and the Trace column contains the number of residues modelled with at most 2 atoms.

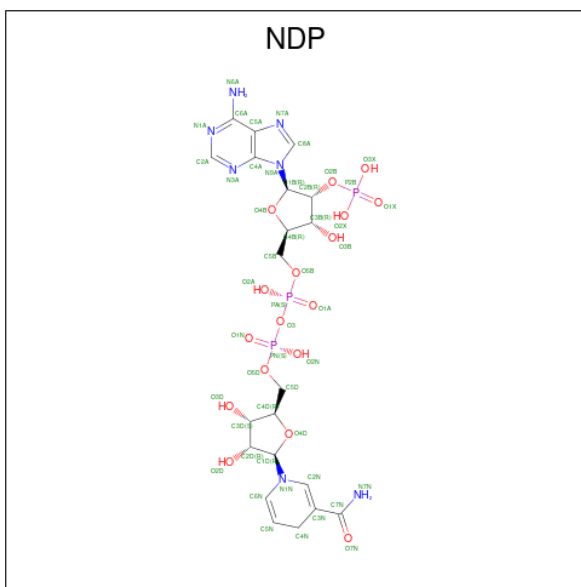
- Molecule 1 is a protein called Dihydrofolate reductase.

Mol	Chain	Residues	Atoms					ZeroOcc	AltConf	Trace
			Total	C	N	O	S			
1	A	225	1846	1180	325	334	7	0	0	0
1	B	225	1842	1177	324	334	7	0	0	0

There are 20 discrepancies between the modelled and reference sequences:

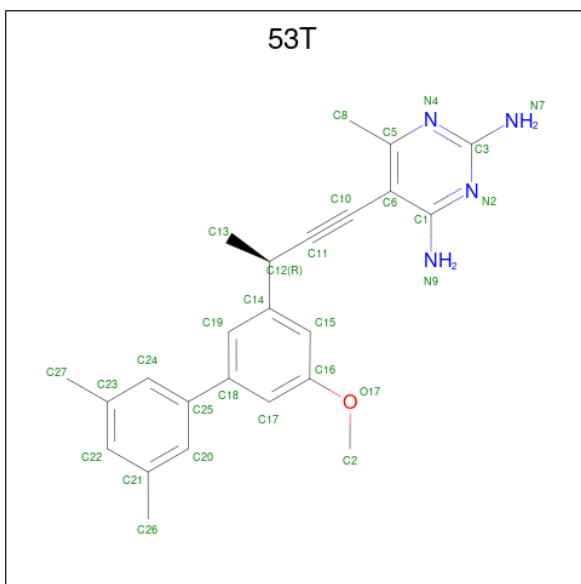
Chain	Residue	Modelled	Actual	Comment	Reference
A	218	LEU	-	expression tag	UNP Q6FPH0
A	219	GLU	-	expression tag	UNP Q6FPH0
A	220	HIS	-	expression tag	UNP Q6FPH0
A	221	HIS	-	expression tag	UNP Q6FPH0
A	222	HIS	-	expression tag	UNP Q6FPH0
A	223	HIS	-	expression tag	UNP Q6FPH0
A	224	HIS	-	expression tag	UNP Q6FPH0
A	225	HIS	-	expression tag	UNP Q6FPH0
A	226	HIS	-	expression tag	UNP Q6FPH0
A	227	HIS	-	expression tag	UNP Q6FPH0
B	218	LEU	-	expression tag	UNP Q6FPH0
B	219	GLU	-	expression tag	UNP Q6FPH0
B	220	HIS	-	expression tag	UNP Q6FPH0
B	221	HIS	-	expression tag	UNP Q6FPH0
B	222	HIS	-	expression tag	UNP Q6FPH0
B	223	HIS	-	expression tag	UNP Q6FPH0
B	224	HIS	-	expression tag	UNP Q6FPH0
B	225	HIS	-	expression tag	UNP Q6FPH0
B	226	HIS	-	expression tag	UNP Q6FPH0
B	227	HIS	-	expression tag	UNP Q6FPH0

- Molecule 2 is NADPH DIHYDRO-NICOTINAMIDE-ADENINE-DINUCLEOTIDE PHOSPHATE (three-letter code: NDP) (formula: C₂₁H₃₀N₇O₁₇P₃).



Mol	Chain	Residues	Atoms				ZeroOcc	AltConf	
			Total	C	N	O			P
2	A	1	48	21	7	17	3	0	0
2	B	1	48	21	7	17	3	0	0

- Molecule 3 is 5-[(3R)-3-(5-methoxy-3',5'-dimethylbiphenyl-3-yl)but-1-yn-1-yl]-6-methylpyrimidine-2,4-diamine (three-letter code: 53T) (formula: C₂₄H₂₆N₄O).



Mol	Chain	Residues	Atoms				ZeroOcc	AltConf
			Total	C	N	O		
3	A	1	29	24	4	1	0	0

Continued on next page...

Continued from previous page...

Mol	Chain	Residues	Atoms				ZeroOcc	AltConf
			Total	C	N	O		
3	B	1	29	24	4	1	0	0

- Molecule 4 is water.

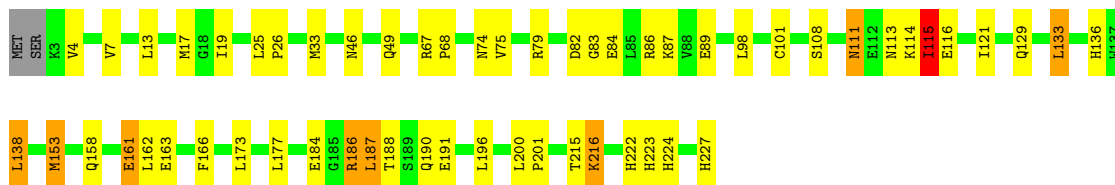
Mol	Chain	Residues	Atoms		ZeroOcc	AltConf
4	A	137	Total	O	0	0
			137	137		
4	B	125	Total	O	0	0
			125	125		

3 Residue-property plots [i](#)


These plots are drawn for all protein, RNA, DNA and oligosaccharide chains in the entry. The first graphic for a chain summarises the proportions of the various outlier classes displayed in the second graphic. The second graphic shows the sequence view annotated by issues in geometry and electron density. Residues are color-coded according to the number of geometric quality criteria for which they contain at least one outlier: green = 0, yellow = 1, orange = 2 and red = 3 or more. A red dot above a residue indicates a poor fit to the electron density ($RSRZ > 2$). Stretches of 2 or more consecutive residues without any outlier are shown as a green connector. Residues present in the sample, but not in the model, are shown in grey.

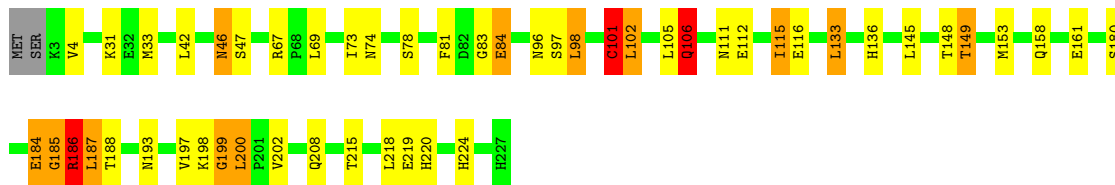
- Molecule 1: Dihydrofolate reductase

Chain A:  74% 21% ..



- Molecule 1: Dihydrofolate reductase

Chain B:  77% 16% 5% ..



4 Data and refinement statistics

Property	Value	Source
Space group	P 41	Depositor
Cell constants a, b, c, α , β , γ	42.83Å 42.83Å 230.98Å 90.00° 90.00° 90.00°	Depositor
Resolution (Å)	42.84 – 1.95 42.83 – 1.95	Depositor EDS
% Data completeness (in resolution range)	96.0 (42.84-1.95) 95.9 (42.83-1.95)	Depositor EDS
R_{merge}	(Not available)	Depositor
R_{sym}	0.09	Depositor
$\langle I/\sigma(I) \rangle$ ¹	2.31 (at 1.95Å)	Xtrriage
Refinement program	REFMAC 5.2.0019	Depositor
R, R_{free}	0.171 , 0.243 0.171 , 0.245	Depositor DCC
R_{free} test set	1456 reflections (5.04%)	wwPDB-VP
Wilson B-factor (Å ²)	20.1	Xtrriage
Anisotropy	0.007	Xtrriage
Bulk solvent k_{sol} (e/Å ³), B_{sol} (Å ²)	0.35 , 23.2	EDS
L-test for twinning ²	$\langle L \rangle = 0.52$, $\langle L^2 \rangle = 0.35$	Xtrriage
Estimated twinning fraction	0.479 for h,-k,-l	Xtrriage
F_o, F_c correlation	0.96	EDS
Total number of atoms	4104	wwPDB-VP
Average B, all atoms (Å ²)	19.0	wwPDB-VP

Xtrriage's analysis on translational NCS is as follows: *The largest off-origin peak in the Patterson function is 9.41% of the height of the origin peak. No significant pseudotranslation is detected.*

¹Intensities estimated from amplitudes.

²Theoretical values of $\langle |L| \rangle$, $\langle L^2 \rangle$ for acentric reflections are 0.5, 0.333 respectively for untwinned datasets, and 0.375, 0.2 for perfectly twinned datasets.

5 Model quality i

5.1 Standard geometry i

Bond lengths and bond angles in the following residue types are not validated in this section: 53T, NDP

The Z score for a bond length (or angle) is the number of standard deviations the observed value is removed from the expected value. A bond length (or angle) with $|Z| > 5$ is considered an outlier worth inspection. RMSZ is the root-mean-square of all Z scores of the bond lengths (or angles).

Mol	Chain	Bond lengths		Bond angles	
		RMSZ	# Z >5	RMSZ	# Z >5
1	A	0.88	0/1891	0.92	4/2556 (0.2%)
1	B	0.96	3/1887 (0.2%)	1.08	18/2552 (0.7%)
All	All	0.92	3/3778 (0.1%)	1.00	22/5108 (0.4%)

Chiral center outliers are detected by calculating the chiral volume of a chiral center and verifying if the center is modelled as a planar moiety or with the opposite hand. A planarity outlier is detected by checking planarity of atoms in a peptide group, atoms in a mainchain group or atoms of a sidechain that are expected to be planar.

Mol	Chain	#Chirality outliers	#Planarity outliers
1	A	0	8
1	B	0	18
All	All	0	26

All (3) bond length outliers are listed below:

Mol	Chain	Res	Type	Atoms	Z	Observed(Å)	Ideal(Å)
1	B	101	CYS	CB-SG	-9.77	1.65	1.82
1	B	185	GLY	C-O	6.87	1.34	1.23
1	B	185	GLY	C-N	5.25	1.46	1.34

All (22) bond angle outliers are listed below:

Mol	Chain	Res	Type	Atoms	Z	Observed(°)	Ideal(°)
1	B	185	GLY	O-C-N	-9.28	107.86	122.70
1	B	102	LEU	N-CA-C	-7.47	90.82	111.00
1	B	188	THR	N-CA-CB	7.42	124.41	110.30
1	B	47	SER	N-CA-C	-7.42	90.97	111.00
1	B	106	GLN	N-CA-C	6.97	129.82	111.00
1	B	84	GLU	N-CA-C	-6.70	92.92	111.00

Continued on next page...

Continued from previous page...

Mol	Chain	Res	Type	Atoms	Z	Observed(°)	Ideal(°)
1	A	116	GLU	N-CA-C	6.41	128.30	111.00
1	B	187	LEU	N-CA-C	-6.31	93.95	111.00
1	B	186	ARG	N-CA-CB	-6.19	99.46	110.60
1	B	185	GLY	C-N-CA	-6.15	106.34	121.70
1	A	188	THR	N-CA-CB	5.77	121.27	110.30
1	B	116	GLU	N-CA-C	5.77	126.58	111.00
1	B	101	CYS	CB-CA-C	5.69	121.78	110.40
1	B	149	THR	N-CA-C	5.62	126.19	111.00
1	B	199	GLY	N-CA-C	-5.61	99.08	113.10
1	B	198	LYS	N-CA-CB	5.38	120.29	110.60
1	B	186	ARG	CB-CA-C	-5.38	99.65	110.40
1	B	133	LEU	CB-CG-CD1	5.22	119.88	111.00
1	B	67	ARG	NE-CZ-NH1	-5.08	117.76	120.30
1	A	115	ILE	N-CA-C	-5.06	97.33	111.00
1	B	112	GLU	N-CA-C	-5.03	97.43	111.00
1	A	84	GLU	N-CA-C	-5.02	97.44	111.00

There are no chirality outliers.

All (26) planarity outliers are listed below:

Mol	Chain	Res	Type	Group
1	A	115	ILE	Peptide
1	A	153	MET	Peptide
1	A	161	GLU	Peptide
1	A	163	GLU	Peptide
1	A	187	LEU	Peptide
1	A	201	PRO	Peptide
1	A	223	HIS	Peptide
1	A	83	GLY	Peptide
1	B	101	CYS	Peptide
1	B	105	LEU	Peptide
1	B	111	ASN	Peptide
1	B	115	ILE	Peptide
1	B	148	THR	Peptide
1	B	185	GLY	Mainchain,Peptide
1	B	186	ARG	Peptide
1	B	187	LEU	Peptide
1	B	193	ASN	Peptide
1	B	197	VAL	Peptide
1	B	199	GLY	Peptide
1	B	200	LEU	Mainchain,Peptide
1	B	46	ASN	Peptide

Continued on next page...

Continued from previous page...

Mol	Chain	Res	Type	Group
1	B	81	PHE	Peptide
1	B	83	GLY	Peptide
1	B	98	LEU	Peptide

5.2 Too-close contacts [i](#)

In the following table, the Non-H and H(model) columns list the number of non-hydrogen atoms and hydrogen atoms in the chain respectively. The H(added) column lists the number of hydrogen atoms added and optimized by MolProbity. The Clashes column lists the number of clashes within the asymmetric unit, whereas Symm-Clashes lists symmetry-related clashes.

Mol	Chain	Non-H	H(model)	H(added)	Clashes	Symm-Clashes
1	A	1846	0	1846	34	1
1	B	1842	0	1835	19	1
2	A	48	0	26	1	0
2	B	48	0	26	0	0
3	A	29	0	26	1	0
3	B	29	0	26	0	0
4	A	137	0	0	14	2
4	B	125	0	0	7	2
All	All	4104	0	3785	53	3

The all-atom clashscore is defined as the number of clashes found per 1000 atoms (including hydrogen atoms). The all-atom clashscore for this structure is 7.

All (53) close contacts within the same asymmetric unit are listed below, sorted by their clash magnitude.

Atom-1	Atom-2	Interatomic distance (Å)	Clash overlap (Å)
1:A:115:ILE:HB	4:A:351:HOH:O	1.22	1.29
1:A:33:MET:SD	4:A:243:HOH:O	2.01	1.17
1:B:33:MET:SD	4:B:344:HOH:O	2.02	1.14
1:A:224:HIS:HE1	4:A:308:HOH:O	1.29	1.13
1:A:33:MET:HE2	4:A:342:HOH:O	1.65	0.96
1:B:224:HIS:HE1	4:B:314:HOH:O	1.55	0.88
1:B:186:ARG:HA	1:B:200:LEU:HD13	1.54	0.85
1:B:42:LEU:HD13	1:B:180:SER:HB3	1.68	0.75
1:A:184:GLU:HB3	4:A:366:HOH:O	1.90	0.72
1:B:31:LYS:NZ	1:B:184:GLU:OE1	2.23	0.71
1:B:4:VAL:H	1:B:106:GLN:HE22	1.42	0.67
1:A:17:MET:HE3	4:A:347:HOH:O	1.95	0.67

Continued on next page...

Continued from previous page...

Atom-1	Atom-2	Interatomic distance (Å)	Clash overlap (Å)
1:A:227:HIS:HD2	4:A:341:HOH:O	1.78	0.65
1:B:69:LEU:H	1:B:74:ASN:HD21	1.43	0.65
1:A:114:LYS:HB2	4:A:321:HOH:O	1.96	0.63
1:A:82:ASP:OD2	1:A:86:ARG:NH1	2.32	0.62
1:B:186:ARG:HA	1:B:200:LEU:CD1	2.28	0.60
1:A:87:LYS:HE3	4:A:339:HOH:O	1.99	0.60
1:A:111:ASN:ND2	1:A:113:ASN:H	2.00	0.59
1:A:111:ASN:HD22	1:A:113:ASN:H	1.51	0.59
1:A:173:LEU:HD23	1:A:200:LEU:HD13	1.84	0.59
1:A:224:HIS:CE1	4:A:308:HOH:O	2.19	0.58
1:A:158:GLN:HB3	1:A:161:GLU:OE1	2.04	0.58
1:A:111:ASN:HD22	1:A:111:ASN:C	2.08	0.55
1:B:158:GLN:HB3	1:B:161:GLU:OE1	2.06	0.55
1:B:180:SER:HB2	4:B:349:HOH:O	2.10	0.51
1:B:97:SER:O	1:B:101:CYS:HB3	2.12	0.50
1:A:136:HIS:HD2	1:A:215:THR:OG1	1.95	0.50
1:A:108:SER:HA	1:A:111:ASN:ND2	2.28	0.49
1:B:4:VAL:N	1:B:106:GLN:HE22	2.10	0.49
1:A:79:ARG:NH1	4:A:311:HOH:O	2.39	0.49
1:A:222:HIS:HE1	4:B:260:HOH:O	1.96	0.48
1:A:49:GLN:O	1:A:115:ILE:HA	2.14	0.48
1:A:19:ILE:O	2:A:228:NDP:H2N	2.15	0.47
1:B:136:HIS:HD2	1:B:215:THR:OG1	1.98	0.46
1:A:7:VAL:HG11	1:A:138:LEU:HD22	1.97	0.46
1:B:73:ILE:HD12	1:B:115:ILE:CD1	2.46	0.46
1:B:31:LYS:HD2	4:B:347:HOH:O	2.15	0.46
1:B:208:GLN:NE2	4:B:309:HOH:O	2.48	0.46
1:A:121:ILE:HD12	3:A:229:53T:H13A	1.98	0.45
1:A:227:HIS:CD2	4:A:341:HOH:O	2.62	0.45
1:B:186:ARG:H	1:B:186:ARG:HG2	1.57	0.45
1:A:75:VAL:HG11	1:A:101:CYS:SG	2.57	0.44
1:B:78:SER:O	1:B:96:ASN:HA	2.19	0.43
1:B:224:HIS:CE1	4:B:314:HOH:O	2.43	0.42
1:A:129:GLN:O	1:A:133:LEU:HD22	2.19	0.42
1:A:13:LEU:HD23	1:A:153:MET:HE1	2.01	0.41
1:A:161:GLU:OE1	4:A:306:HOH:O	2.22	0.41
1:A:67:ARG:HA	1:A:68:PRO:C	2.41	0.41
1:A:166:PHE:CE1	1:A:216:LYS:HG2	2.56	0.41
1:A:186:ARG:HG3	1:A:187:LEU:N	2.36	0.41
1:A:25:LEU:HA	1:A:26:PRO:HD3	1.94	0.41
1:A:114:LYS:HG2	4:A:277:HOH:O	2.19	0.41

All (3) symmetry-related close contacts are listed below. The label for Atom-2 includes the symmetry operator and encoded unit-cell translations to be applied.

Atom-1	Atom-2	Interatomic distance (Å)	Clash overlap (Å)
4:A:271:HOH:O	4:B:347:HOH:O[4_564]	1.83	0.37
1:A:191:GLU:OE1	4:B:311:HOH:O[4_654]	2.03	0.17
1:B:219:GLU:OE2	4:A:339:HOH:O[1_655]	2.14	0.06

5.3 Torsion angles [i](#)

5.3.1 Protein backbone [i](#)

In the following table, the Percentiles column shows the percent Ramachandran outliers of the chain as a percentile score with respect to all X-ray entries followed by that with respect to entries of similar resolution.

The Analysed column shows the number of residues for which the backbone conformation was analysed, and the total number of residues.

Mol	Chain	Analysed	Favoured	Allowed	Outliers	Percentiles
1	A	223/227 (98%)	217 (97%)	5 (2%)	1 (0%)	34 22
1	B	223/227 (98%)	210 (94%)	11 (5%)	2 (1%)	17 8
All	All	446/454 (98%)	427 (96%)	16 (4%)	3 (1%)	22 11

All (3) Ramachandran outliers are listed below:

Mol	Chain	Res	Type
1	B	46	ASN
1	A	162	LEU
1	B	149	THR

5.3.2 Protein sidechains [i](#)

In the following table, the Percentiles column shows the percent sidechain outliers of the chain as a percentile score with respect to all X-ray entries followed by that with respect to entries of similar resolution.

The Analysed column shows the number of residues for which the sidechain conformation was analysed, and the total number of residues.

Mol	Chain	Analysed	Rotameric	Outliers	Percentiles
1	A	205/207 (99%)	192 (94%)	13 (6%)	18 7

Continued on next page...

Continued from previous page...

Mol	Chain	Analysed	Rotameric	Outliers	Percentiles	
1	B	204/207 (99%)	191 (94%)	13 (6%)	17	6
All	All	409/414 (99%)	383 (94%)	26 (6%)	17	6

All (26) residues with a non-rotameric sidechain are listed below:

Mol	Chain	Res	Type
1	A	4	VAL
1	A	46	ASN
1	A	74	ASN
1	A	89	GLU
1	A	98	LEU
1	A	111	ASN
1	A	133	LEU
1	A	138	LEU
1	A	177	LEU
1	A	186	ARG
1	A	190	GLN
1	A	196	LEU
1	A	216	LYS
1	B	84	GLU
1	B	98	LEU
1	B	101	CYS
1	B	102	LEU
1	B	106	GLN
1	B	133	LEU
1	B	145	LEU
1	B	153	MET
1	B	184	GLU
1	B	186	ARG
1	B	202	VAL
1	B	218	LEU
1	B	220	HIS

Sometimes sidechains can be flipped to improve hydrogen bonding and reduce clashes. All (17) such sidechains are listed below:

Mol	Chain	Res	Type
1	A	111	ASN
1	A	136	HIS
1	A	190	GLN
1	A	193	ASN
1	A	203	GLN

Continued on next page...

Continued from previous page...

Mol	Chain	Res	Type
1	A	208	GLN
1	A	222	HIS
1	A	224	HIS
1	B	46	ASN
1	B	74	ASN
1	B	106	GLN
1	B	113	ASN
1	B	136	HIS
1	B	182	GLN
1	B	193	ASN
1	B	208	GLN
1	B	224	HIS

5.3.3 RNA [i](#)

There are no RNA molecules in this entry.

5.4 Non-standard residues in protein, DNA, RNA chains [i](#)

There are no non-standard protein/DNA/RNA residues in this entry.

5.5 Carbohydrates [i](#)

There are no monosaccharides in this entry.

5.6 Ligand geometry [i](#)

4 ligands are modelled in this entry.

In the following table, the Counts columns list the number of bonds (or angles) for which Mogul statistics could be retrieved, the number of bonds (or angles) that are observed in the model and the number of bonds (or angles) that are defined in the Chemical Component Dictionary. The Link column lists molecule types, if any, to which the group is linked. The Z score for a bond length (or angle) is the number of standard deviations the observed value is removed from the expected value. A bond length (or angle) with $|Z| > 2$ is considered an outlier worth inspection. RMSZ is the root-mean-square of all Z scores of the bond lengths (or angles).

Mol	Type	Chain	Res	Link	Bond lengths			Bond angles		
					Counts	RMSZ	# Z > 2	Counts	RMSZ	# Z > 2
3	53T	A	229	-	28,31,31	1.23	2 (7%)	35,44,44	1.77	6 (17%)

Mol	Type	Chain	Res	Link	Bond lengths			Bond angles		
					Counts	RMSZ	# Z > 2	Counts	RMSZ	# Z > 2
2	NDP	A	228	-	45,52,52	1.67	8 (17%)	53,80,80	1.46	5 (9%)
2	NDP	B	228	-	45,52,52	1.64	9 (20%)	53,80,80	1.47	8 (15%)
3	53T	B	229	-	28,31,31	1.45	4 (14%)	35,44,44	1.91	11 (31%)

In the following table, the Chirals column lists the number of chiral outliers, the number of chiral centers analysed, the number of these observed in the model and the number defined in the Chemical Component Dictionary. Similar counts are reported in the Torsion and Rings columns. '-' means no outliers of that kind were identified.

Mol	Type	Chain	Res	Link	Chirals	Torsions	Rings
3	53T	A	229	-	-	2/8/15/15	0/3/3/3
2	NDP	A	228	-	-	1/30/77/77	0/5/5/5
2	NDP	B	228	-	-	1/30/77/77	0/5/5/5
3	53T	B	229	-	-	1/8/15/15	0/3/3/3

All (23) bond length outliers are listed below:

Mol	Chain	Res	Type	Atoms	Z	Observed(Å)	Ideal(Å)
2	A	228	NDP	O7N-C7N	6.14	1.39	1.24
2	B	228	NDP	O7N-C7N	6.06	1.38	1.24
2	A	228	NDP	C6N-C5N	4.37	1.41	1.33
3	B	229	53T	C8-C5	4.12	1.57	1.50
2	B	228	NDP	C2A-N3A	4.04	1.38	1.32
3	A	229	53T	C8-C5	3.49	1.56	1.50
2	B	228	NDP	C6N-C5N	3.30	1.39	1.33
2	A	228	NDP	C2A-N3A	3.27	1.37	1.32
2	A	228	NDP	C4N-C3N	-2.82	1.44	1.49
2	B	228	NDP	C2A-N1A	2.75	1.39	1.33
2	B	228	NDP	C4N-C3N	-2.73	1.44	1.49
3	B	229	53T	O17-C2	2.38	1.49	1.42
3	A	229	53T	C19-C14	2.35	1.42	1.37
3	B	229	53T	C14-C12	2.34	1.54	1.52
2	A	228	NDP	C4N-C5N	-2.34	1.42	1.48
2	A	228	NDP	P2B-O2B	2.33	1.63	1.59
2	B	228	NDP	C4N-C5N	-2.16	1.43	1.48
2	A	228	NDP	C2N-C3N	2.15	1.40	1.34
2	B	228	NDP	C7N-C3N	2.09	1.53	1.48
2	A	228	NDP	PN-O2N	-2.08	1.45	1.55
3	B	229	53T	C17-C16	2.07	1.40	1.37
2	B	228	NDP	P2B-O2B	2.05	1.63	1.59
2	B	228	NDP	C6N-N1N	2.04	1.42	1.37

All (30) bond angle outliers are listed below:

Mol	Chain	Res	Type	Atoms	Z	Observed(°)	Ideal(°)
2	A	228	NDP	N3A-C2A-N1A	-7.07	117.63	128.68
3	B	229	53T	C3-N4-C5	6.40	122.01	116.79
2	B	228	NDP	N3A-C2A-N1A	-6.30	118.84	128.68
3	A	229	53T	C3-N4-C5	5.65	121.40	116.79
3	B	229	53T	C3-N2-C1	4.20	121.63	116.99
3	A	229	53T	C3-N2-C1	4.07	121.49	116.99
2	A	228	NDP	O4D-C1D-N1N	3.72	115.33	108.06
2	B	228	NDP	C3N-C7N-N7N	3.32	123.56	117.67
3	A	229	53T	C13-C12-C11	3.18	117.13	111.00
3	B	229	53T	N4-C3-N2	-2.77	121.08	125.42
3	B	229	53T	C13-C12-C11	2.57	115.96	111.00
3	A	229	53T	C6-C1-N2	-2.50	118.09	121.63
3	A	229	53T	O17-C16-C17	-2.45	117.76	124.43
2	B	228	NDP	O7N-C7N-N7N	-2.43	117.19	122.88
2	B	228	NDP	C2A-N1A-C6A	2.42	122.89	118.75
3	B	229	53T	N9-C1-N2	2.39	120.42	117.03
3	A	229	53T	N4-C3-N2	-2.37	121.70	125.42
2	B	228	NDP	O2B-C2B-C1B	-2.37	101.58	110.10
3	B	229	53T	C17-C16-C15	-2.32	118.32	121.12
3	B	229	53T	C6-C1-N2	-2.30	118.38	121.63
3	B	229	53T	C16-C17-C18	2.28	123.00	119.70
2	A	228	NDP	C2A-N1A-C6A	2.24	122.59	118.75
2	A	228	NDP	O7N-C7N-N7N	-2.20	117.73	122.88
3	B	229	53T	C5-C6-C10	2.17	123.03	119.21
3	B	229	53T	C23-C22-C21	-2.17	118.21	121.61
2	B	228	NDP	O4B-C4B-C5B	2.10	116.30	109.37
2	B	228	NDP	C1D-N1N-C2N	-2.07	117.67	121.11
2	B	228	NDP	O3B-C3B-C2B	2.06	117.02	111.17
2	A	228	NDP	C3N-C7N-N7N	2.06	121.33	117.67
3	B	229	53T	O17-C16-C17	-2.00	118.97	124.43

There are no chirality outliers.

All (5) torsion outliers are listed below:

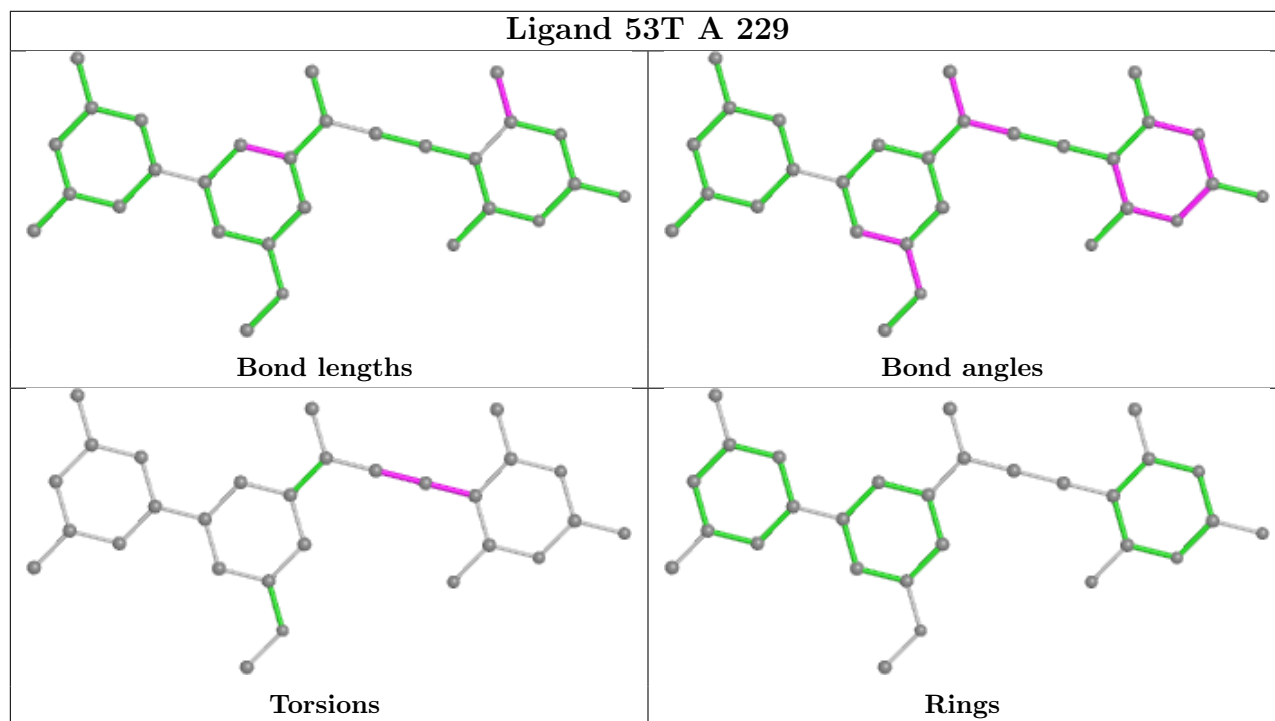
Mol	Chain	Res	Type	Atoms
3	B	229	53T	C6-C10-C11-C12
3	A	229	53T	C6-C10-C11-C12
2	A	228	NDP	O4D-C1D-N1N-C2N
2	B	228	NDP	O4D-C1D-N1N-C2N
3	A	229	53T	C11-C10-C6-C5

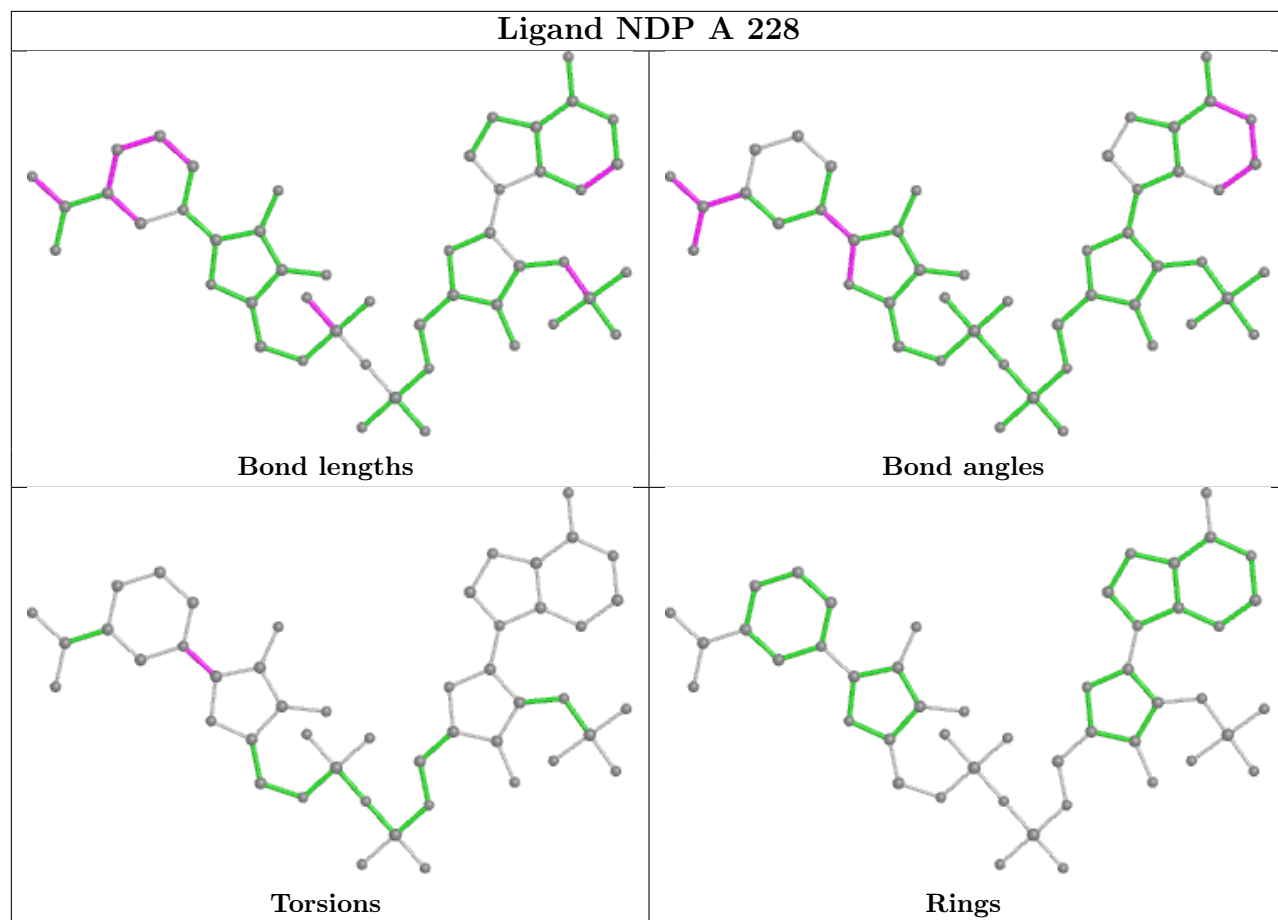
There are no ring outliers.

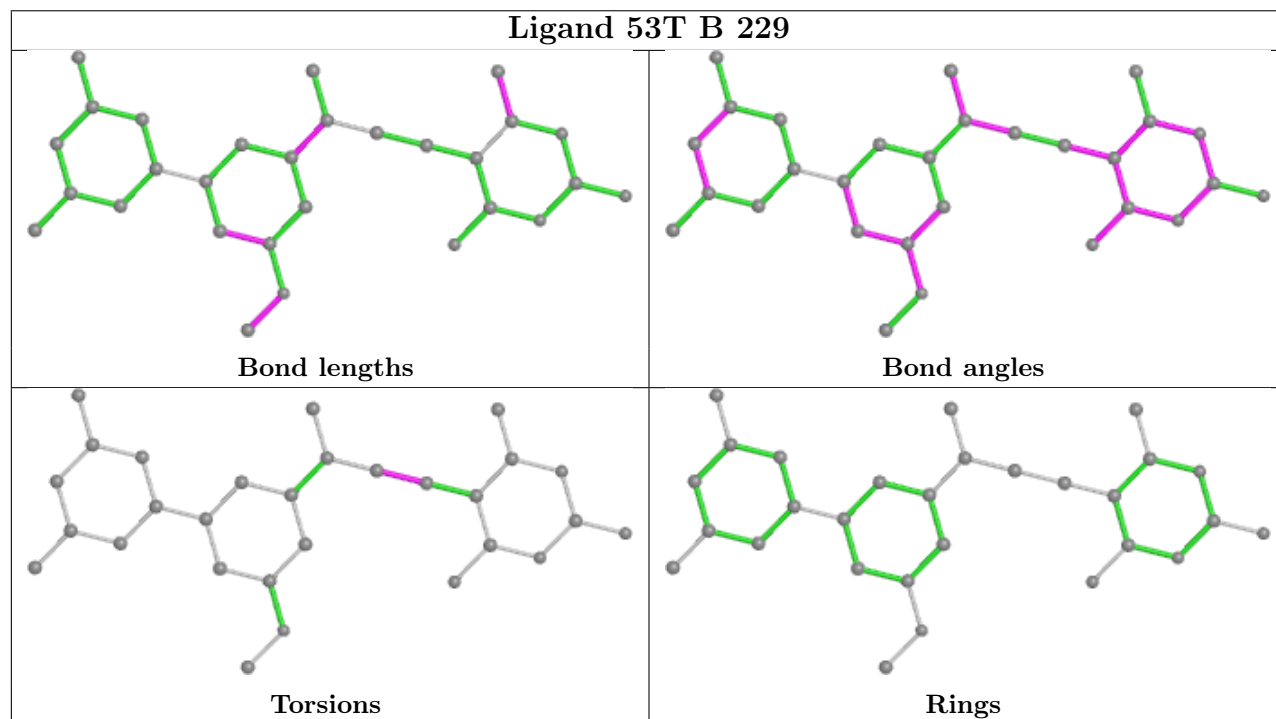
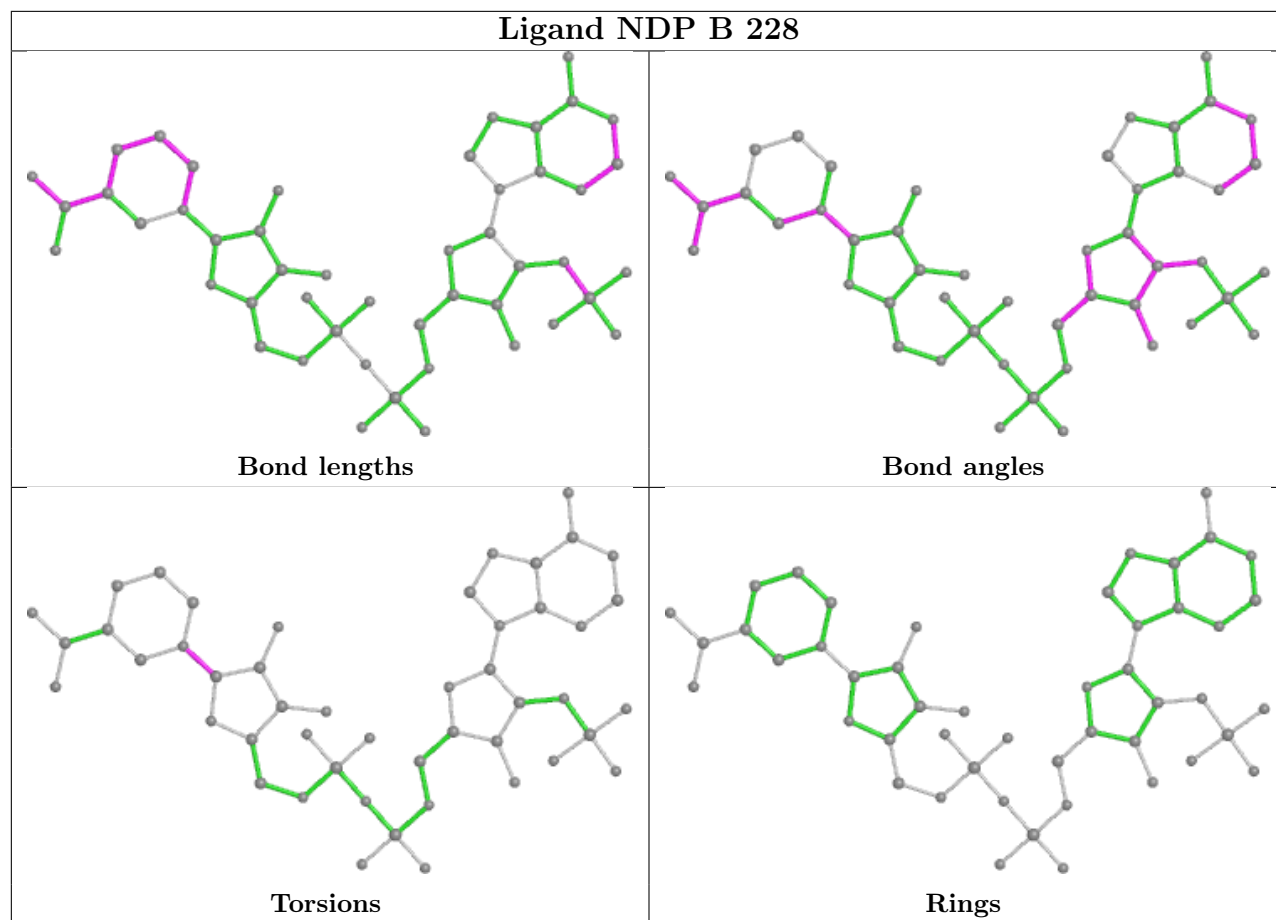
2 monomers are involved in 2 short contacts:

Mol	Chain	Res	Type	Clashes	Symm-Clashes
3	A	229	53T	1	0
2	A	228	NDP	1	0

The following is a two-dimensional graphical depiction of Mogul quality analysis of bond lengths, bond angles, torsion angles, and ring geometry for all instances of the Ligand of Interest. In addition, ligands with molecular weight > 250 and outliers as shown on the validation Tables will also be included. For torsion angles, if less than 5% of the Mogul distribution of torsion angles is within 10 degrees of the torsion angle in question, then that torsion angle is considered an outlier. Any bond that is central to one or more torsion angles identified as an outlier by Mogul will be highlighted in the graph. For rings, the root-mean-square deviation (RMSD) between the ring in question and similar rings identified by Mogul is calculated over all ring torsion angles. If the average RMSD is greater than 60 degrees and the minimal RMSD between the ring in question and any Mogul-identified rings is also greater than 60 degrees, then that ring is considered an outlier. The outliers are highlighted in purple. The color gray indicates Mogul did not find sufficient equivalents in the CSD to analyse the geometry.







5.7 Other polymers [i](#)

There are no such residues in this entry.

5.8 Polymer linkage issues [i](#)

There are no chain breaks in this entry.

6 Fit of model and data [i](#)

6.1 Protein, DNA and RNA chains [i](#)

In the following table, the column labelled ‘#RSRZ> 2’ contains the number (and percentage) of RSRZ outliers, followed by percent RSRZ outliers for the chain as percentile scores relative to all X-ray entries and entries of similar resolution. The OWAB column contains the minimum, median, 95th percentile and maximum values of the occupancy-weighted average B-factor per residue. The column labelled ‘Q< 0.9’ lists the number of (and percentage) of residues with an average occupancy less than 0.9.

Mol	Chain	Analysed	<RSRZ>	#RSRZ>2	OWAB(Å ²)	Q<0.9
1	A	225/227 (99%)	-0.38	0 100 100	10, 18, 31, 42	1 (0%)
1	B	225/227 (99%)	-0.39	0 100 100	10, 19, 31, 41	1 (0%)
All	All	450/454 (99%)	-0.38	0 100 100	10, 18, 32, 42	2 (0%)

There are no RSRZ outliers to report.

6.2 Non-standard residues in protein, DNA, RNA chains [i](#)

There are no non-standard protein/DNA/RNA residues in this entry.

6.3 Carbohydrates [i](#)

There are no monosaccharides in this entry.

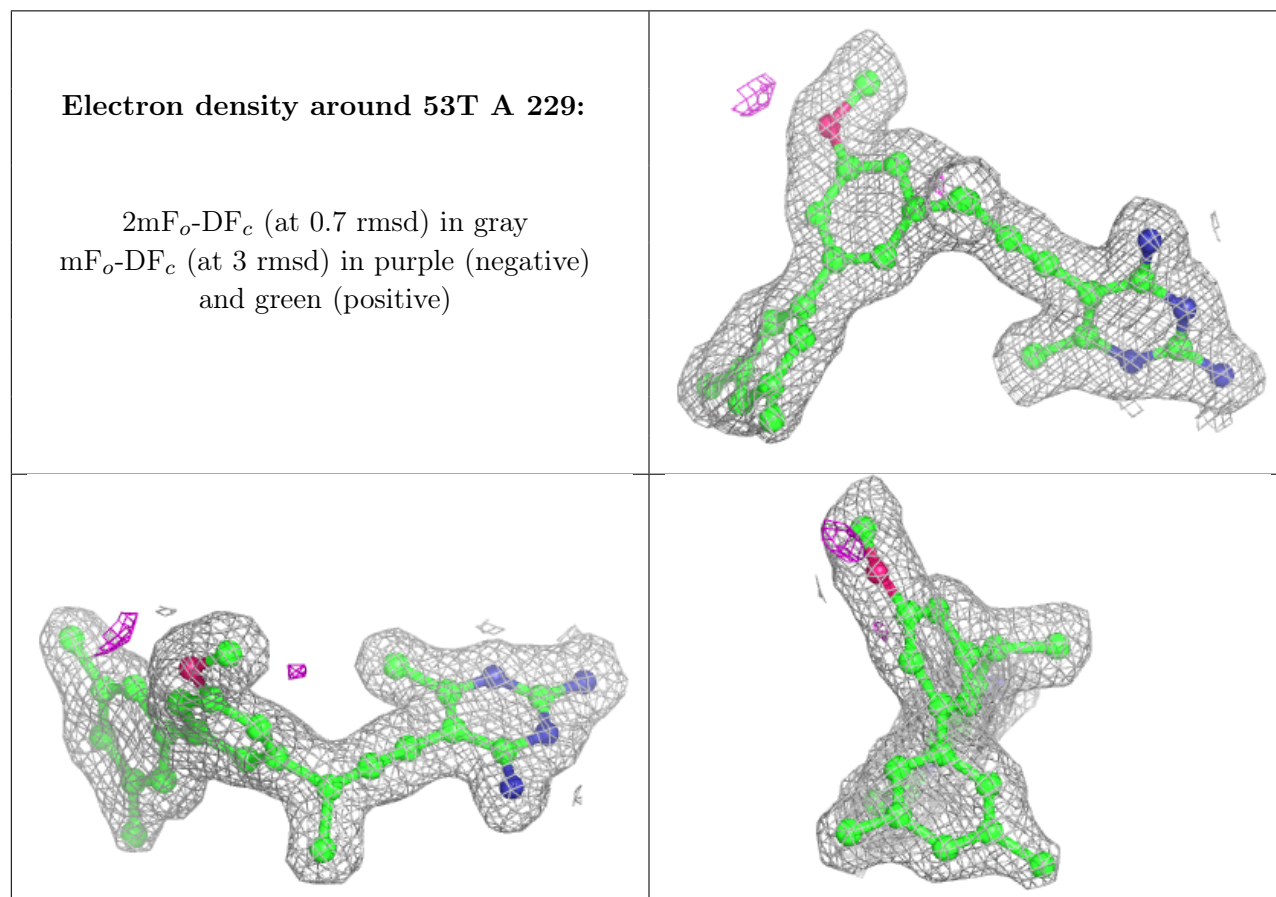
6.4 Ligands [i](#)

In the following table, the Atoms column lists the number of modelled atoms in the group and the number defined in the chemical component dictionary. The B-factors column lists the minimum, median, 95th percentile and maximum values of B factors of atoms in the group. The column labelled ‘Q< 0.9’ lists the number of atoms with occupancy less than 0.9.

Mol	Type	Chain	Res	Atoms	RSCC	RSR	B-factors(Å ²)	Q<0.9
3	53T	A	229	29/29	0.96	0.08	9,14,18,22	0
3	53T	B	229	29/29	0.96	0.09	9,14,22,24	0
2	NDP	A	228	48/48	0.98	0.07	8,14,18,19	0
2	NDP	B	228	48/48	0.98	0.07	8,14,18,20	0

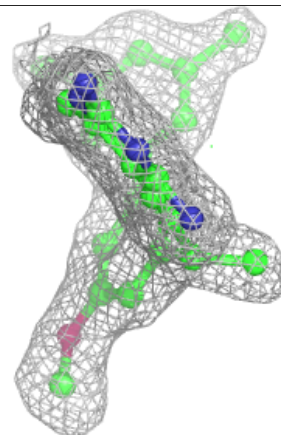
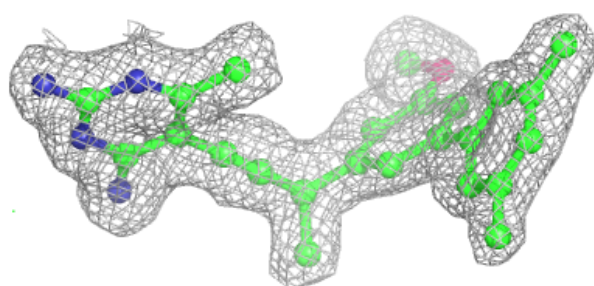
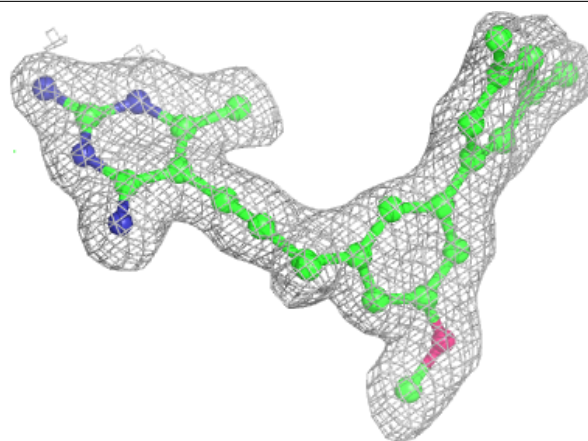
The following is a graphical depiction of the model fit to experimental electron density of all instances of the Ligand of Interest. In addition, ligands with molecular weight > 250 and outliers

as shown on the geometry validation Tables will also be included. Each fit is shown from different orientation to approximate a three-dimensional view.

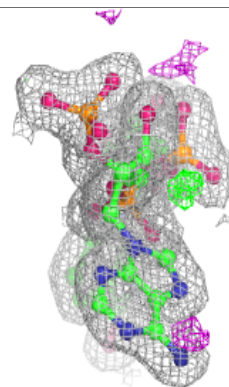
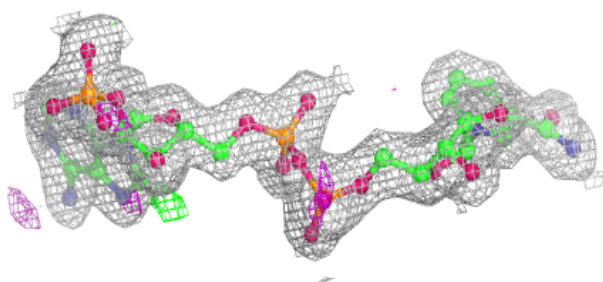
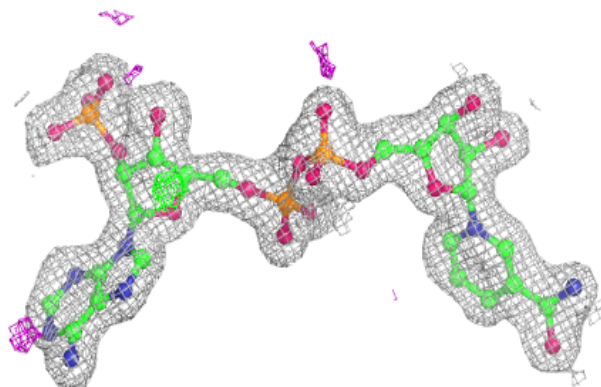


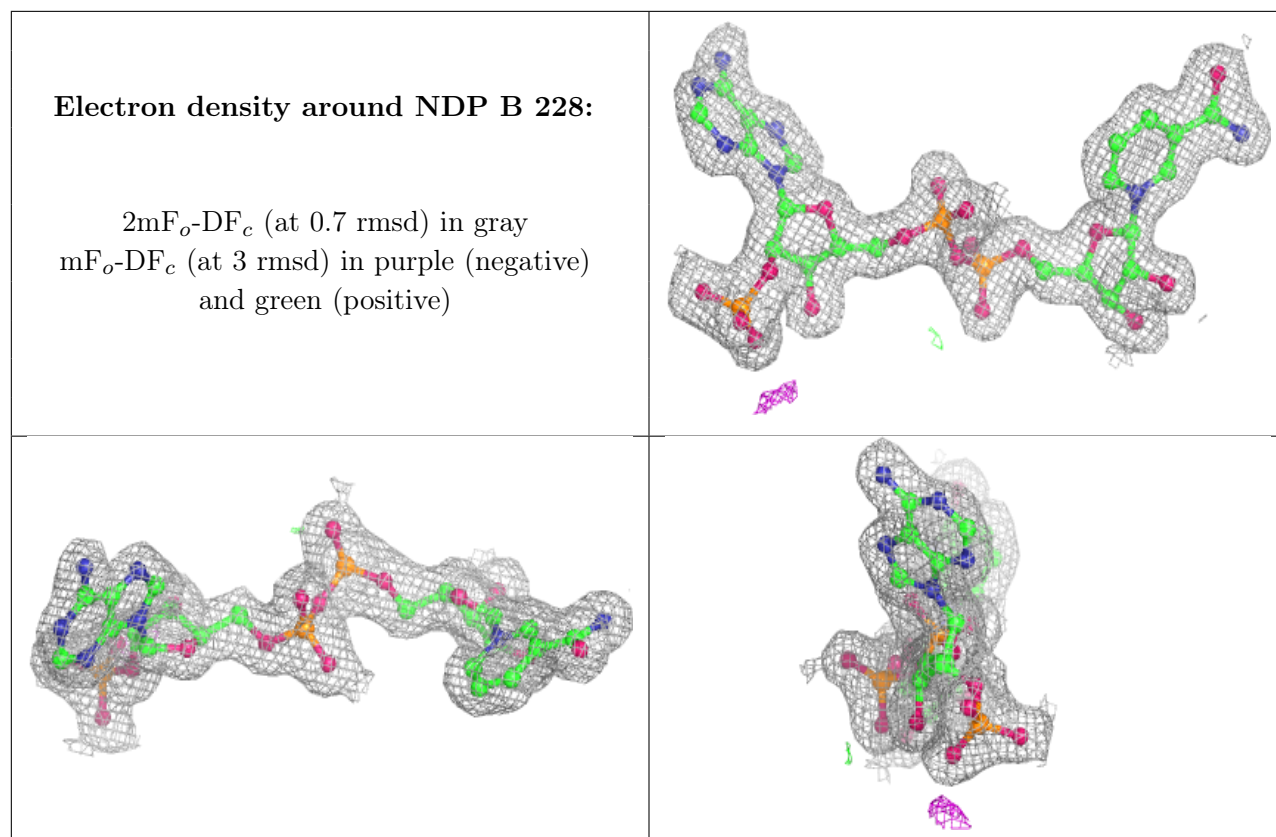
Electron density around 53T B 229:

$2mF_o-DF_c$ (at 0.7 rmsd) in gray
 mF_o-DF_c (at 3 rmsd) in purple (negative)
and green (positive)

**Electron density around NDP A 228:**

$2mF_o-DF_c$ (at 0.7 rmsd) in gray
 mF_o-DF_c (at 3 rmsd) in purple (negative)
and green (positive)





6.5 Other polymers [i](#)

There are no such residues in this entry.