



Full wwPDB X-ray Structure Validation Report ⓘ

Aug 23, 2023 – 02:53 PM EDT

PDB ID : 3DBZ
Title : human surfactant protein D
Authors : Head, J.F.
Deposited on : 2008-06-02
Resolution : 1.80 Å(reported)

This is a Full wwPDB X-ray Structure Validation Report for a publicly released PDB entry.

We welcome your comments at validation@mail.wwpdb.org

A user guide is available at

<https://www.wwpdb.org/validation/2017/XrayValidationReportHelp>

with specific help available everywhere you see the ⓘ symbol.

The types of validation reports are described at

<http://www.wwpdb.org/validation/2017/FAQs#types>.

The following versions of software and data (see [references ⓘ](#)) were used in the production of this report:

MolProbity : 4.02b-467
Mogul : 1.8.5 (274361), CSD as541be (2020)
Xtriage (Phenix) : 1.13
EDS : 2.35
Percentile statistics : 20191225.v01 (using entries in the PDB archive December 25th 2019)
Refmac : 5.8.0158
CCP4 : 7.0.044 (Gargrove)
Ideal geometry (proteins) : Engh & Huber (2001)
Ideal geometry (DNA, RNA) : Parkinson et al. (1996)
Validation Pipeline (wwPDB-VP) : 2.35

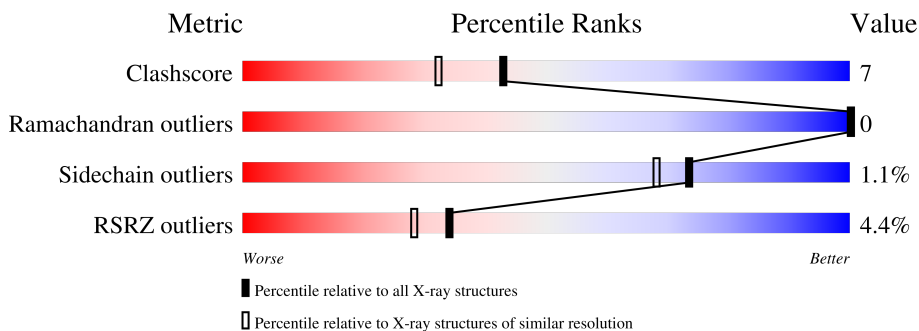
1 Overall quality at a glance

The following experimental techniques were used to determine the structure:

X-RAY DIFFRACTION

The reported resolution of this entry is 1.80 Å.

Percentile scores (ranging between 0-100) for global validation metrics of the entry are shown in the following graphic. The table shows the number of entries on which the scores are based.



Metric	Whole archive (#Entries)	Similar resolution (#Entries, resolution range(Å))
Clashscore	141614	6793 (1.80-1.80)
Ramachandran outliers	138981	6697 (1.80-1.80)
Sidechain outliers	138945	6696 (1.80-1.80)
RSRZ outliers	127900	5850 (1.80-1.80)

The table below summarises the geometric issues observed across the polymeric chains and their fit to the electron density. The red, orange, yellow and green segments of the lower bar indicate the fraction of residues that contain outliers for ≥ 3 , 2, 1 and 0 types of geometric quality criteria respectively. A grey segment represents the fraction of residues that are not modelled. The numeric value for each fraction is indicated below the corresponding segment, with a dot representing fractions $\leq 5\%$. The upper red bar (where present) indicates the fraction of residues that have poor fit to the electron density. The numeric value is given above the bar.

Mol	Chain	Length	Quality of chain
1	A	160	 4% 81% 14% 5%
1	B	160	 5% 79% 18% •
1	C	160	 3% 79% 14% • 6%

The following table lists non-polymeric compounds, carbohydrate monomers and non-standard residues in protein, DNA, RNA chains that are outliers for geometric or electron-density-fit criteria:

Mol	Type	Chain	Res	Chirality	Geometry	Clashes	Electron density
3	MPD	A	900	-	-	-	X

2 Entry composition i

There are 4 unique types of molecules in this entry. The entry contains 4075 atoms, of which 0 are hydrogens and 0 are deuteriums.

In the tables below, the ZeroOcc column contains the number of atoms modelled with zero occupancy, the AltConf column contains the number of residues with at least one atom in alternate conformation and the Trace column contains the number of residues modelled with at most 2 atoms.

- Molecule 1 is a protein called Pulmonary surfactant-associated protein D.

Mol	Chain	Residues	Atoms					ZeroOcc	AltConf	Trace
			Total	C	N	O	S			
1	A	152	1161	728	198	230	5	0	0	0
1	B	155	1179	737	201	236	5	0	0	0
1	C	150	1149	720	196	228	5	0	0	0

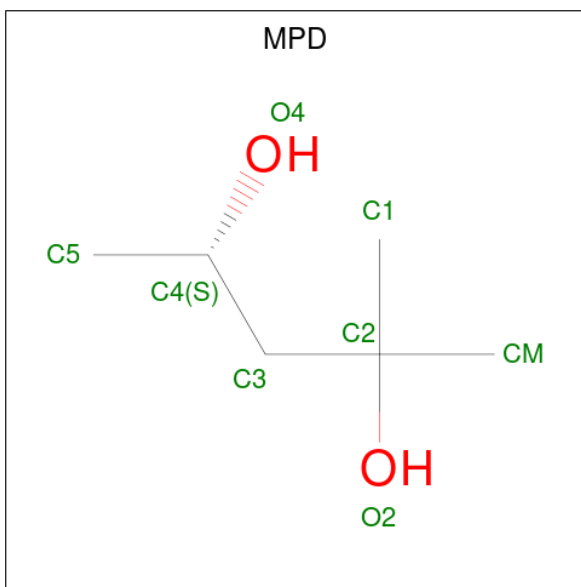
There are 21 discrepancies between the modelled and reference sequences:

Chain	Residue	Modelled	Actual	Comment	Reference
A	196	ALA	-	expression tag	UNP P35247
A	197	MET	-	expression tag	UNP P35247
A	198	ALA	-	expression tag	UNP P35247
A	199	ASP	-	expression tag	UNP P35247
A	200	ILE	-	expression tag	UNP P35247
A	201	GLY	-	expression tag	UNP P35247
A	202	SER	-	expression tag	UNP P35247
B	196	ALA	-	expression tag	UNP P35247
B	197	MET	-	expression tag	UNP P35247
B	198	ALA	-	expression tag	UNP P35247
B	199	ASP	-	expression tag	UNP P35247
B	200	ILE	-	expression tag	UNP P35247
B	201	GLY	-	expression tag	UNP P35247
B	202	SER	-	expression tag	UNP P35247
C	196	ALA	-	expression tag	UNP P35247
C	197	MET	-	expression tag	UNP P35247
C	198	ALA	-	expression tag	UNP P35247
C	199	ASP	-	expression tag	UNP P35247
C	200	ILE	-	expression tag	UNP P35247
C	201	GLY	-	expression tag	UNP P35247
C	202	SER	-	expression tag	UNP P35247

- Molecule 2 is CALCIUM ION (three-letter code: CA) (formula: Ca).

Mol	Chain	Residues	Atoms	ZeroOcc	AltConf
2	A	3	Total Ca 3 3	0	0
2	B	3	Total Ca 3 3	0	0
2	C	3	Total Ca 3 3	0	0

- Molecule 3 is (4S)-2-METHYL-2,4-PENTANEDIOL (three-letter code: MPD) (formula: C₆H₁₄O₂).



Mol	Chain	Residues	Atoms	ZeroOcc	AltConf
3	A	1	Total C O 8 6 2	0	0
3	A	1	Total C O 8 6 2	0	0


- Molecule 4 is water.

Mol	Chain	Residues	Atoms	ZeroOcc	AltConf
4	A	186	Total O 186 186	0	0
4	B	196	Total O 196 196	0	0
4	C	179	Total O 179 179	0	0

3 Residue-property plots [i](#)


These plots are drawn for all protein, RNA, DNA and oligosaccharide chains in the entry. The first graphic for a chain summarises the proportions of the various outlier classes displayed in the second graphic. The second graphic shows the sequence view annotated by issues in geometry and electron density. Residues are color-coded according to the number of geometric quality criteria for which they contain at least one outlier: green = 0, yellow = 1, orange = 2 and red = 3 or more. A red dot above a residue indicates a poor fit to the electron density ($RSRZ > 2$). Stretches of 2 or more consecutive residues without any outlier are shown as a green connector. Residues present in the sample, but not in the model, are shown in grey.

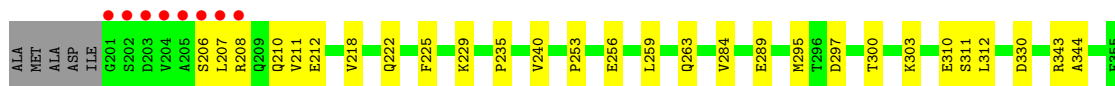
- Molecule 1: Pulmonary surfactant-associated protein D

Chain A: 




- Molecule 1: Pulmonary surfactant-associated protein D

Chain B: 



- Molecule 1: Pulmonary surfactant-associated protein D

Chain C: 



4 Data and refinement statistics i

Property	Value	Source
Space group	P 1 21 1	Depositor
Cell constants a, b, c, α , β , γ	55.26Å 107.60Å 55.60Å 90.00° 91.80° 90.00°	Depositor
Resolution (Å)	50.00 – 1.80 26.75 – 1.60	Depositor EDS
% Data completeness (in resolution range)	98.7 (50.00-1.80) 92.9 (26.75-1.60)	Depositor EDS
R_{merge}	0.04	Depositor
R_{sym}	(Not available)	Depositor
$\langle I/\sigma(I) \rangle$ ¹	2.24 (at 1.60Å)	Xtrriage
Refinement program	CNS	Depositor
R, R_{free}	0.180 , 0.202 0.182 , (Not available)	Depositor DCC
R_{free} test set	No test flags present.	wwPDB-VP
Wilson B-factor (Å ²)	16.1	Xtrriage
Anisotropy	0.159	Xtrriage
Bulk solvent k_{sol} (e/Å ³), B_{sol} (Å ²)	0.34 , 46.8	EDS
L-test for twinning ²	$\langle L \rangle = 0.48$, $\langle L^2 \rangle = 0.31$	Xtrriage
Estimated twinning fraction	0.007 for l,k,-h 0.034 for h,-k,-l 0.028 for l,-k,h	Xtrriage
F_o, F_c correlation	0.96	EDS
Total number of atoms	4075	wwPDB-VP
Average B, all atoms (Å ²)	21.0	wwPDB-VP

Xtrriage's analysis on translational NCS is as follows: *The largest off-origin peak in the Patterson function is 5.39% of the height of the origin peak. No significant pseudotranslation is detected.*

¹Intensities estimated from amplitudes.

²Theoretical values of $\langle |L| \rangle$, $\langle L^2 \rangle$ for acentric reflections are 0.5, 0.333 respectively for untwinned datasets, and 0.375, 0.2 for perfectly twinned datasets.

5 Model quality [i](#)

5.1 Standard geometry [i](#)

Bond lengths and bond angles in the following residue types are not validated in this section: MPD, CA

The Z score for a bond length (or angle) is the number of standard deviations the observed value is removed from the expected value. A bond length (or angle) with $|Z| > 5$ is considered an outlier worth inspection. RMSZ is the root-mean-square of all Z scores of the bond lengths (or angles).

Mol	Chain	Bond lengths		Bond angles	
		RMSZ	# Z >5	RMSZ	# Z >5
1	A	0.32	0/1183	0.56	0/1598
1	B	0.32	0/1201	0.54	0/1622
1	C	0.31	0/1171	0.53	0/1581
All	All	0.31	0/3555	0.54	0/4801

There are no bond length outliers.

There are no bond angle outliers.

There are no chirality outliers.

There are no planarity outliers.

5.2 Too-close contacts [i](#)

In the following table, the Non-H and H(model) columns list the number of non-hydrogen atoms and hydrogen atoms in the chain respectively. The H(added) column lists the number of hydrogen atoms added and optimized by MolProbity. The Clashes column lists the number of clashes within the asymmetric unit, whereas Symm-Clashes lists symmetry-related clashes.

Mol	Chain	Non-H	H(model)	H(added)	Clashes	Symm-Clashes
1	A	1161	0	1119	19	0
1	B	1179	0	1131	17	0
1	C	1149	0	1105	16	0
2	A	3	0	0	0	0
2	B	3	0	0	0	0
2	C	3	0	0	0	0
3	A	16	0	28	0	0
4	A	186	0	0	1	0
4	B	196	0	0	2	0
4	C	179	0	0	1	0
All	All	4075	0	3383	47	0

The all-atom clashscore is defined as the number of clashes found per 1000 atoms (including hydrogen atoms). The all-atom clashscore for this structure is 7.

All (47) close contacts within the same asymmetric unit are listed below, sorted by their clash magnitude.

Atom-1	Atom-2	Interatomic distance (Å)	Clash overlap (Å)
1:A:238:GLN:NE2	1:A:283:LEU:HG	1.90	0.87
1:A:208:ARG:HG2	1:C:207:LEU:HD13	1.57	0.86
1:A:238:GLN:CD	1:A:283:LEU:HG	1.99	0.83
1:A:207:LEU:HD23	1:C:207:LEU:HD21	1.76	0.67
1:B:256:GLU:HG3	4:B:555:HOH:O	2.02	0.59
1:A:238:GLN:NE2	1:A:279:ALA:O	2.37	0.57
1:A:299:LYS:HD2	4:A:1033:HOH:O	2.06	0.56
1:A:237:GLY:O	1:A:238:GLN:HG3	2.07	0.54
1:B:206:SER:O	1:B:210:GLN:HG3	2.09	0.53
1:B:208:ARG:O	1:B:212:GLU:HG3	2.09	0.52
1:B:297:ASP:OD1	1:B:330:ASP:HA	2.12	0.49
1:A:207:LEU:HD13	1:B:208:ARG:HH11	1.77	0.49
1:B:218:VAL:O	1:B:222:GLN:HG3	2.13	0.48
1:B:253:PRO:HB2	4:B:555:HOH:O	2.13	0.48
1:B:295:MET:HG2	1:B:312:LEU:CD2	2.44	0.48
1:A:284:VAL:HG13	1:A:289:GLU:O	2.14	0.48
1:A:292:PHE:CD2	1:A:349:ARG:HB2	2.49	0.48
1:A:207:LEU:O	1:A:211:VAL:HG23	2.14	0.48
1:A:295:MET:HG2	1:A:312:LEU:HD21	1.97	0.47
1:C:292:PHE:CD2	1:C:349:ARG:HB2	2.49	0.47
1:C:215:GLN:O	1:C:219:GLN:HG2	2.15	0.47
1:B:225:PHE:O	1:B:229:LYS:HG3	2.15	0.46
1:B:207:LEU:O	1:B:211:VAL:HG23	2.15	0.46
1:A:240:VAL:O	1:A:240:VAL:HG13	2.16	0.45
1:A:295:MET:HG2	1:A:312:LEU:CD2	2.47	0.45
1:A:218:VAL:HG21	1:C:214:LEU:HD11	1.98	0.45
1:B:295:MET:HG2	1:B:312:LEU:HD21	1.97	0.45
1:C:306:TYR:OH	1:C:313:VAL:HG22	2.18	0.44
1:C:259:LEU:O	1:C:263:GLN:HG3	2.17	0.44
1:C:272:ARG:NE	4:C:508:HOH:O	2.51	0.43
1:A:297:ASP:OD1	1:A:330:ASP:HA	2.18	0.43
1:B:259:LEU:O	1:B:263:GLN:HG3	2.17	0.43
1:C:225:PHE:CE2	1:C:229:LYS:HD3	2.54	0.43
1:C:297:ASP:OD1	1:C:330:ASP:HA	2.19	0.42
1:C:207:LEU:O	1:C:211:VAL:HG23	2.19	0.42
1:A:343:ARG:HD2	1:A:347:GLU:HG3	2.02	0.42
1:C:240:VAL:HG13	1:C:240:VAL:O	2.19	0.42

Continued on next page...

Continued from previous page...

Atom-1	Atom-2	Interatomic distance (Å)	Clash overlap (Å)
1:C:295:MET:HG2	1:C:312:LEU:CD2	2.50	0.42
1:C:295:MET:HG2	1:C:312:LEU:HD21	2.00	0.42
1:A:232:GLU:OE1	1:C:232:GLU:OE1	2.37	0.42
1:B:240:VAL:HG13	1:B:240:VAL:O	2.19	0.42
1:B:284:VAL:HG13	1:B:289:GLU:O	2.20	0.41
1:B:300:THR:HG21	1:B:303:LYS:HD2	2.03	0.41
1:C:234:PHE:HA	1:C:235:PRO:HA	1.84	0.41
1:B:343:ARG:HG3	1:B:344:ALA:N	2.35	0.41
1:A:343:ARG:HG3	1:A:344:ALA:N	2.36	0.40
1:B:310:GLU:HG2	1:B:311:SER:O	2.21	0.40

There are no symmetry-related clashes.

5.3 Torsion angles [i](#)

5.3.1 Protein backbone [i](#)

In the following table, the Percentiles column shows the percent Ramachandran outliers of the chain as a percentile score with respect to all X-ray entries followed by that with respect to entries of similar resolution.

The Analysed column shows the number of residues for which the backbone conformation was analysed, and the total number of residues.

Mol	Chain	Analysed	Favoured	Allowed	Outliers	Percentiles	
1	A	150/160 (94%)	146 (97%)	4 (3%)	0	100	100
1	B	153/160 (96%)	148 (97%)	5 (3%)	0	100	100
1	C	148/160 (92%)	144 (97%)	4 (3%)	0	100	100
All	All	451/480 (94%)	438 (97%)	13 (3%)	0	100	100

There are no Ramachandran outliers to report.

5.3.2 Protein sidechains [i](#)

In the following table, the Percentiles column shows the percent sidechain outliers of the chain as a percentile score with respect to all X-ray entries followed by that with respect to entries of similar resolution.

The Analysed column shows the number of residues for which the sidechain conformation was analysed, and the total number of residues.

Mol	Chain	Analysed	Rotameric	Outliers	Percentiles	
1	A	122/127 (96%)	121 (99%)	1 (1%)	81	78
1	B	124/127 (98%)	123 (99%)	1 (1%)	81	78
1	C	121/127 (95%)	119 (98%)	2 (2%)	60	51
All	All	367/381 (96%)	363 (99%)	4 (1%)	73	68

All (4) residues with a non-rotameric sidechain are listed below:

Mol	Chain	Res	Type
1	A	235	PRO
1	B	235	PRO
1	C	228	TYR
1	C	235	PRO

Sometimes sidechains can be flipped to improve hydrogen bonding and reduce clashes. All (6) such sidechains are listed below:

Mol	Chain	Res	Type
1	A	210	GLN
1	A	263	GLN
1	B	215	GLN
1	C	219	GLN
1	C	220	HIS
1	C	222	GLN

5.3.3 RNA [i](#)

There are no RNA molecules in this entry.

5.4 Non-standard residues in protein, DNA, RNA chains [i](#)

There are no non-standard protein/DNA/RNA residues in this entry.

5.5 Carbohydrates [i](#)

There are no monosaccharides in this entry.

5.6 Ligand geometry [i](#)

Of 11 ligands modelled in this entry, 9 are monoatomic - leaving 2 for Mogul analysis.

In the following table, the Counts columns list the number of bonds (or angles) for which Mogul statistics could be retrieved, the number of bonds (or angles) that are observed in the model and the number of bonds (or angles) that are defined in the Chemical Component Dictionary. The Link column lists molecule types, if any, to which the group is linked. The Z score for a bond length (or angle) is the number of standard deviations the observed value is removed from the expected value. A bond length (or angle) with $|Z| > 2$ is considered an outlier worth inspection. RMSZ is the root-mean-square of all Z scores of the bond lengths (or angles).

Mol	Type	Chain	Res	Link	Bond lengths			Bond angles		
					Counts	RMSZ	# Z > 2	Counts	RMSZ	# Z > 2
3	MPD	A	900	-	7,7,7	0.70	0	9,10,10	0.65	0
3	MPD	A	901	2	7,7,7	0.69	0	9,10,10	0.95	1 (11%)

In the following table, the Chirals column lists the number of chiral outliers, the number of chiral centers analysed, the number of these observed in the model and the number defined in the Chemical Component Dictionary. Similar counts are reported in the Torsion and Rings columns. '-' means no outliers of that kind were identified.

Mol	Type	Chain	Res	Link	Chirals	Torsions	Rings
3	MPD	A	900	-	-	3/5/5/5	-
3	MPD	A	901	2	-	3/5/5/5	-

There are no bond length outliers.

All (1) bond angle outliers are listed below:

Mol	Chain	Res	Type	Atoms	Z	Observed(°)	Ideal(°)
3	A	901	MPD	CM-C2-C1	-2.28	105.83	110.57

There are no chirality outliers.

All (6) torsion outliers are listed below:

Mol	Chain	Res	Type	Atoms
3	A	900	MPD	C1-C2-C3-C4
3	A	900	MPD	O2-C2-C3-C4
3	A	901	MPD	C1-C2-C3-C4
3	A	901	MPD	O2-C2-C3-C4
3	A	900	MPD	CM-C2-C3-C4
3	A	901	MPD	CM-C2-C3-C4

There are no ring outliers.

No monomer is involved in short contacts.

5.7 Other polymers [i](#)

There are no such residues in this entry.

5.8 Polymer linkage issues [i](#)

There are no chain breaks in this entry.

6 Fit of model and data

6.1 Protein, DNA and RNA chains

In the following table, the column labelled ‘#RSRZ > 2’ contains the number (and percentage) of RSRZ outliers, followed by percent RSRZ outliers for the chain as percentile scores relative to all X-ray entries and entries of similar resolution. The OWAB column contains the minimum, median, 95th percentile and maximum values of the occupancy-weighted average B-factor per residue. The column labelled ‘Q < 0.9’ lists the number of (and percentage) of residues with an average occupancy less than 0.9.

Mol	Chain	Analysed	<RSRZ>	#RSRZ>2	OWAB(Å ²)	Q<0.9
1	A	152/160 (95%)	-0.27	7 (4%) 32 26	10, 17, 42, 56	1 (0%)
1	B	155/160 (96%)	-0.21	8 (5%) 27 22	11, 17, 46, 54	1 (0%)
1	C	150/160 (93%)	-0.27	5 (3%) 46 40	11, 18, 36, 51	0
All	All	457/480 (95%)	-0.25	20 (4%) 34 28	10, 17, 42, 56	2 (0%)

All (20) RSRZ outliers are listed below:

Mol	Chain	Res	Type	RSRZ
1	A	204	VAL	8.3
1	B	203	ASP	6.5
1	B	202	SER	6.3
1	B	204	VAL	6.2
1	B	201	GLY	5.9
1	A	205	ALA	5.6
1	A	208	ARG	4.7
1	B	207	LEU	4.5
1	B	205	ALA	4.1
1	C	206	SER	3.9
1	A	209	GLN	3.1
1	A	207	LEU	3.1
1	C	207	LEU	2.9
1	A	206	SER	2.9
1	B	206	SER	2.9
1	C	209	GLN	2.8
1	C	210	GLN	2.3
1	B	208	ARG	2.3
1	C	208	ARG	2.2
1	A	238	GLN	2.1

6.2 Non-standard residues in protein, DNA, RNA chains [i](#)

There are no non-standard protein/DNA/RNA residues in this entry.

6.3 Carbohydrates [i](#)

There are no monosaccharides in this entry.

6.4 Ligands [i](#)

In the following table, the Atoms column lists the number of modelled atoms in the group and the number defined in the chemical component dictionary. The B-factors column lists the minimum, median, 95th percentile and maximum values of B factors of atoms in the group. The column labelled 'Q< 0.9' lists the number of atoms with occupancy less than 0.9.

Mol	Type	Chain	Res	Atoms	RSCC	RSR	B-factors(Å ²)	Q<0.9
3	MPD	A	900	8/8	0.09	1.01	45,46,47,48	0
3	MPD	A	901	8/8	0.78	0.21	23,28,30,31	0
2	CA	B	403	1/1	0.98	0.04	22,22,22,22	0
2	CA	C	403	1/1	0.98	0.05	20,20,20,20	0
2	CA	A	401	1/1	0.99	0.05	14,14,14,14	0
2	CA	C	402	1/1	0.99	0.04	15,15,15,15	0
2	CA	A	402	1/1	0.99	0.05	14,14,14,14	0
2	CA	A	403	1/1	0.99	0.03	16,16,16,16	0
2	CA	B	402	1/1	0.99	0.05	15,15,15,15	0
2	CA	B	401	1/1	1.00	0.05	13,13,13,13	0
2	CA	C	401	1/1	1.00	0.04	12,12,12,12	0

6.5 Other polymers [i](#)

There are no such residues in this entry.