



Full wwPDB X-ray Structure Validation Report ⓘ

Jan 24, 2023 – 03:34 AM EST

PDB ID : 3CVO
Title : Crystal structure of a methyltransferase-like protein (spo2022) from silicibacter pomeroyi dss-3 at 1.80 Å resolution
Authors : Joint Center for Structural Genomics (JCSG)
Deposited on : 2008-04-18
Resolution : 1.80 Å (reported)

This is a Full wwPDB X-ray Structure Validation Report for a publicly released PDB entry.

We welcome your comments at validation@mail.wwpdb.org

A user guide is available at

<https://www.wwpdb.org/validation/2017/XrayValidationReportHelp>

with specific help available everywhere you see the ⓘ symbol.

The types of validation reports are described at

<http://www.wwpdb.org/validation/2017/FAQs#types>.

The following versions of software and data (see [references ⓘ](#)) were used in the production of this report:

MolProbity : 4.02b-467
Mogul : 1.8.5 (274361), CSD as541be (2020)
Xtriage (Phenix) : 1.13
EDS : 2.31.2
Percentile statistics : 20191225.v01 (using entries in the PDB archive December 25th 2019)
Refmac : 5.8.0158
CCP4 : 7.0.044 (Gargrove)
Ideal geometry (proteins) : Engh & Huber (2001)
Ideal geometry (DNA, RNA) : Parkinson et al. (1996)
Validation Pipeline (wwPDB-VP) : 2.31.2

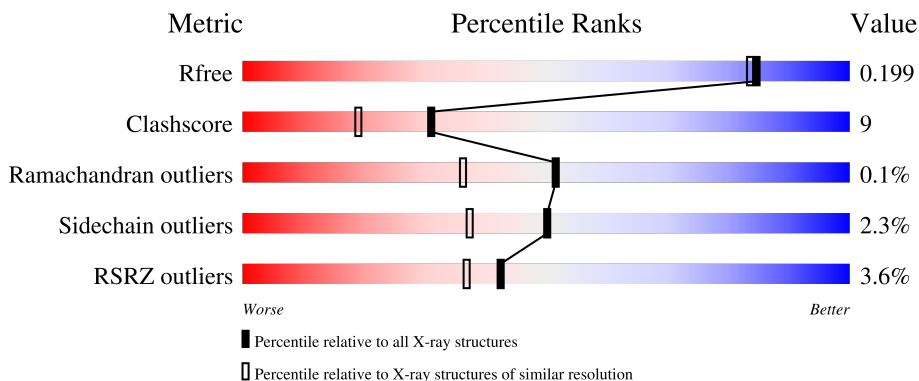
1 Overall quality at a glance

The following experimental techniques were used to determine the structure:

X-RAY DIFFRACTION

The reported resolution of this entry is 1.80 Å.

Percentile scores (ranging between 0-100) for global validation metrics of the entry are shown in the following graphic. The table shows the number of entries on which the scores are based.



Metric	Whole archive (#Entries)	Similar resolution (#Entries, resolution range(Å))
R_{free}	130704	5950 (1.80-1.80)
Clashscore	141614	6793 (1.80-1.80)
Ramachandran outliers	138981	6697 (1.80-1.80)
Sidechain outliers	138945	6696 (1.80-1.80)
RSRZ outliers	127900	5850 (1.80-1.80)

The table below summarises the geometric issues observed across the polymeric chains and their fit to the electron density. The red, orange, yellow and green segments of the lower bar indicate the fraction of residues that contain outliers for ≥ 3 , 2, 1 and 0 types of geometric quality criteria respectively. A grey segment represents the fraction of residues that are not modelled. The numeric value for each fraction is indicated below the corresponding segment, with a dot representing fractions $\leq 5\%$. The upper red bar (where present) indicates the fraction of residues that have poor fit to the electron density. The numeric value is given above the bar.

Mol	Chain	Length	Quality of chain
1	A	202	 83% 12% .
1	B	202	 88% 8% .
1	C	202	 7% 85% 10% .
1	D	202	 4% 81% 14% . .

The following table lists non-polymeric compounds, carbohydrate monomers and non-standard

residues in protein, DNA, RNA chains that are outliers for geometric or electron-density-fit criteria:

Mol	Type	Chain	Res	Chirality	Geometry	Clashes	Electron density
3	EDO	A	203	-	-	X	-
3	EDO	C	203	-	-	-	X

2 Entry composition

There are 6 unique types of molecules in this entry. The entry contains 6963 atoms, of which 0 are hydrogens and 0 are deuteriums.

In the tables below, the ZeroOcc column contains the number of atoms modelled with zero occupancy, the AltConf column contains the number of residues with at least one atom in alternate conformation and the Trace column contains the number of residues modelled with at most 2 atoms.

- Molecule 1 is a protein called Methyltransferase-like protein of unknown function.

Mol	Chain	Residues	Atoms						ZeroOcc	AltConf	Trace
			Total	C	N	O	S	Se			
1	A	194	Total 1541	C 985	N 269	O 277	S 1	Se 9	0	5	0
1	B	194	Total 1597	C 1015	N 285	O 287	S 1	Se 9	0	9	0
1	C	194	Total 1547	C 986	N 272	O 279	S 1	Se 9	0	6	0
1	D	194	Total 1569	C 999	N 271	O 289	S 1	Se 9	0	9	0

There are 4 discrepancies between the modelled and reference sequences:

Chain	Residue	Modelled	Actual	Comment	Reference
A	0	GLY	-	expression tag	UNP Q5LRV1
B	0	GLY	-	expression tag	UNP Q5LRV1
C	0	GLY	-	expression tag	UNP Q5LRV1
D	0	GLY	-	expression tag	UNP Q5LRV1

- Molecule 2 is SULFATE ION (three-letter code: SO4) (formula: O₄S).



Mol	Chain	Residues	Atoms	ZeroOcc	AltConf
2	A	1	Total O S 5 4 1	0	0
2	B	1	Total O S 5 4 1	0	0

- Molecule 3 is 1,2-ETHANEDIOL (three-letter code: EDO) (formula: C₂H₆O₂).



Mol	Chain	Residues	Atoms	ZeroOcc	AltConf
3	A	1	Total C O 4 2 2	0	0
3	A	1	Total C O 4 2 2	0	0

Continued on next page...

Continued from previous page...

Mol	Chain	Residues	Atoms	ZeroOcc	AltConf
3	A	1	Total C O 4 2 2	0	0
3	A	1	Total C O 4 2 2	0	0
3	A	1	Total C O 4 2 2	0	0
3	A	1	Total C O 4 2 2	0	0
3	A	1	Total C O 4 2 2	0	0
3	A	1	Total C O 4 2 2	0	0
3	A	1	Total C O 4 2 2	0	0
3	A	1	Total C O 4 2 2	0	0
3	A	1	Total C O 4 2 2	0	0
3	A	1	Total C O 4 2 2	0	0
3	B	1	Total C O 4 2 2	0	0
3	B	1	Total C O 4 2 2	0	0
3	B	1	Total C O 4 2 2	0	0
3	B	1	Total C O 4 2 2	0	0
3	B	1	Total C O 4 2 2	0	0
3	B	1	Total C O 4 2 2	0	0
3	B	1	Total C O 4 2 2	0	0
3	B	1	Total C O 4 2 2	0	0
3	B	1	Total C O 4 2 2	0	0
3	B	1	Total C O 4 2 2	0	0
3	B	1	Total C O 4 2 2	0	0

Continued on next page...

Continued from previous page...

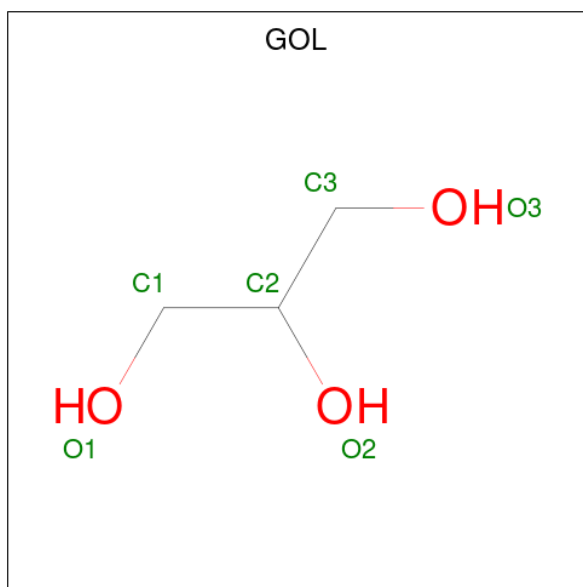
Mol	Chain	Residues	Atoms			ZeroOcc	AltConf
3	B	1	Total 4	C 2	O 2	0	0
3	B	1	Total 4	C 2	O 2	0	0
3	C	1	Total 4	C 2	O 2	0	0
3	C	1	Total 4	C 2	O 2	0	0
3	C	1	Total 4	C 2	O 2	0	0
3	C	1	Total 4	C 2	O 2	0	0
3	C	1	Total 4	C 2	O 2	0	0
3	C	1	Total 4	C 2	O 2	0	0
3	C	1	Total 4	C 2	O 2	0	0
3	D	1	Total 4	C 2	O 2	0	0
3	D	1	Total 4	C 2	O 2	0	0
3	D	1	Total 4	C 2	O 2	0	0
3	D	1	Total 4	C 2	O 2	0	0
3	D	1	Total 4	C 2	O 2	0	0
3	D	1	Total 4	C 2	O 2	0	0
3	D	1	Total 4	C 2	O 2	0	0
3	D	1	Total 4	C 2	O 2	0	0
3	D	1	Total 4	C 2	O 2	0	0
3	D	1	Total 4	C 2	O 2	0	0
3	D	1	Total 4	C 2	O 2	0	0
3	D	1	Total 4	C 2	O 2	0	0

Continued on next page...

Continued from previous page...

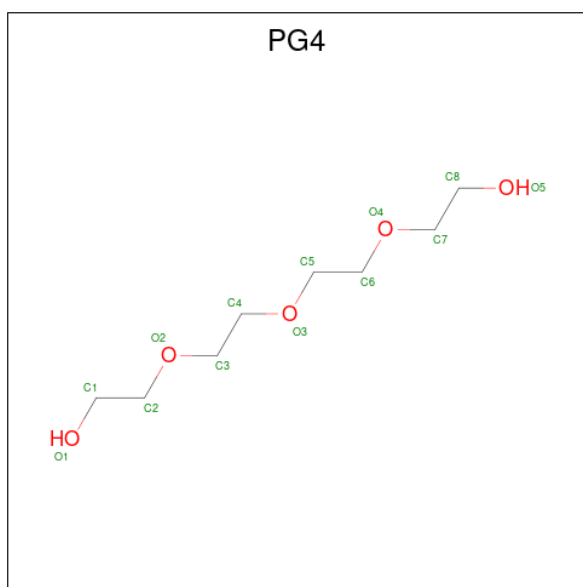
Mol	Chain	Residues	Atoms			ZeroOcc	AltConf
3	D	1	Total	C	O	0	0
			4	2	2		
3	D	1	Total	C	O	0	0
			4	2	2		

- Molecule 4 is GLYCEROL (three-letter code: GOL) (formula: $C_3H_8O_3$).



Mol	Chain	Residues	Atoms			ZeroOcc	AltConf
4	C	1	Total	C	O	0	0
			6	3	3		

- Molecule 5 is TETRAETHYLENE GLYCOL (three-letter code: PG4) (formula: $C_8H_{18}O_5$).



Mol	Chain	Residues	Atoms		ZeroOcc	AltConf
5	D	1	Total	C O	0	0
			13	8 5		

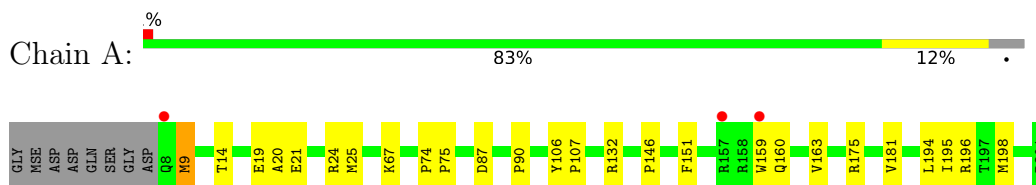
- Molecule 6 is water.

Mol	Chain	Residues	Atoms		ZeroOcc	AltConf
6	A	119	Total	O	0	0
			119	119		
6	B	146	Total	O	0	0
			146	146		
6	C	96	Total	O	0	0
			96	96		
6	D	135	Total	O	0	0
			135	135		

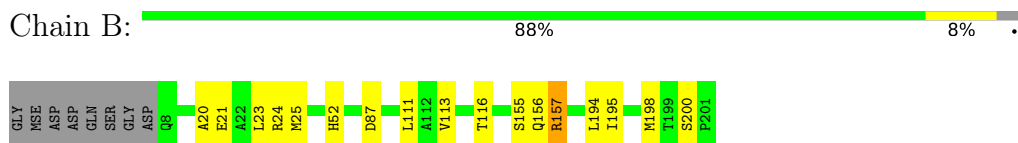
3 Residue-property plots [i](#)

These plots are drawn for all protein, RNA, DNA and oligosaccharide chains in the entry. The first graphic for a chain summarises the proportions of the various outlier classes displayed in the second graphic. The second graphic shows the sequence view annotated by issues in geometry and electron density. Residues are color-coded according to the number of geometric quality criteria for which they contain at least one outlier: green = 0, yellow = 1, orange = 2 and red = 3 or more. A red dot above a residue indicates a poor fit to the electron density ($RSRZ > 2$). Stretches of 2 or more consecutive residues without any outlier are shown as a green connector. Residues present in the sample, but not in the model, are shown in grey.

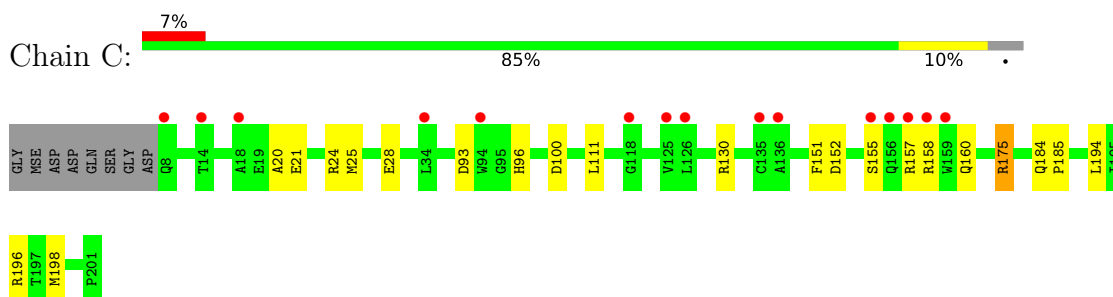
- Molecule 1: Methyltransferase-like protein of unknown function



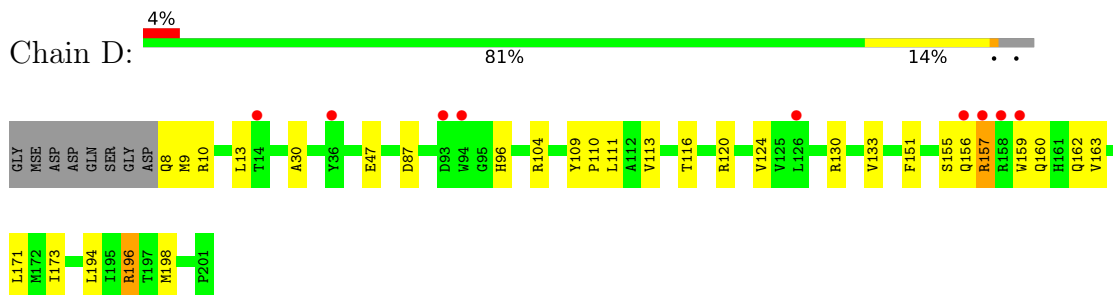
- Molecule 1: Methyltransferase-like protein of unknown function



- Molecule 1: Methyltransferase-like protein of unknown function



- Molecule 1: Methyltransferase-like protein of unknown function



4 Data and refinement statistics

Property	Value	Source
Space group	C 1 2 1	Depositor
Cell constants a, b, c, α , β , γ	173.39Å 61.65Å 96.32Å 90.00° 97.45° 90.00°	Depositor
Resolution (Å)	29.63 – 1.80 29.62 – 1.80	Depositor EDS
% Data completeness (in resolution range)	99.9 (29.63-1.80) 99.9 (29.62-1.80)	Depositor EDS
R_{merge}	0.08	Depositor
R_{sym}	0.08	Depositor
$\langle I/\sigma(I) \rangle$ ¹	1.87 (at 1.80Å)	Xtrriage
Refinement program	REFMAC 5.4.0069, PHENIX	Depositor
R, R_{free}	0.168 , 0.194 0.174 , 0.199	Depositor DCC
R_{free} test set	4690 reflections (5.01%)	wwPDB-VP
Wilson B-factor (Å ²)	21.6	Xtrriage
Anisotropy	0.360	Xtrriage
Bulk solvent k_{sol} (e/Å ³), B_{sol} (Å ²)	0.38 , 55.1	EDS
L-test for twinning ²	$\langle L \rangle = 0.49$, $\langle L^2 \rangle = 0.32$	Xtrriage
Estimated twinning fraction	No twinning to report.	Xtrriage
F_o, F_c correlation	0.96	EDS
Total number of atoms	6963	wwPDB-VP
Average B, all atoms (Å ²)	28.0	wwPDB-VP

Xtrriage's analysis on translational NCS is as follows: *The largest off-origin peak in the Patterson function is 4.41% of the height of the origin peak. No significant pseudotranslation is detected.*

¹Intensities estimated from amplitudes.

²Theoretical values of $\langle |L| \rangle$, $\langle L^2 \rangle$ for acentric reflections are 0.5, 0.333 respectively for untwinned datasets, and 0.375, 0.2 for perfectly twinned datasets.

5 Model quality [i](#)

5.1 Standard geometry [i](#)

Bond lengths and bond angles in the following residue types are not validated in this section: GOL, PG4, SO4, EDO

The Z score for a bond length (or angle) is the number of standard deviations the observed value is removed from the expected value. A bond length (or angle) with $|Z| > 5$ is considered an outlier worth inspection. RMSZ is the root-mean-square of all Z scores of the bond lengths (or angles).

Mol	Chain	Bond lengths		Bond angles	
		RMSZ	# Z >5	RMSZ	# Z >5
1	A	0.74	0/1579	0.80	1/2144 (0.0%)
1	B	0.80	0/1634	0.83	0/2213
1	C	0.65	0/1585	0.76	0/2154
1	D	0.80	0/1606	0.80	1/2182 (0.0%)
All	All	0.75	0/6404	0.80	2/8693 (0.0%)

There are no bond length outliers.

All (2) bond angle outliers are listed below:

Mol	Chain	Res	Type	Atoms	Z	Observed(°)	Ideal(°)
1	A	132	ARG	NE-CZ-NH2	-5.76	117.42	120.30
1	D	87	ASP	CB-CG-OD1	5.05	122.85	118.30

There are no chirality outliers.

There are no planarity outliers.

5.2 Too-close contacts [i](#)

In the following table, the Non-H and H(model) columns list the number of non-hydrogen atoms and hydrogen atoms in the chain respectively. The H(added) column lists the number of hydrogen atoms added and optimized by MolProbity. The Clashes column lists the number of clashes within the asymmetric unit, whereas Symm-Clashes lists symmetry-related clashes.

Mol	Chain	Non-H	H(model)	H(added)	Clashes	Symm-Clashes
1	A	1541	0	1487	29	0
1	B	1597	0	1561	24	0
1	C	1547	0	1492	23	0
1	D	1569	0	1512	39	0
2	A	5	0	0	0	0

Continued on next page...

Continued from previous page...

Mol	Chain	Non-H	H(model)	H(added)	Clashes	Symm-Clashes
2	B	5	0	0	0	0
3	A	48	0	72	7	0
3	B	52	0	78	8	0
3	C	28	0	42	0	0
3	D	56	0	84	4	0
4	C	6	0	8	0	0
5	D	13	0	18	0	0
6	A	119	0	0	0	0
6	B	146	0	0	3	0
6	C	96	0	0	0	0
6	D	135	0	0	1	0
All	All	6963	0	6354	117	0

The all-atom clashscore is defined as the number of clashes found per 1000 atoms (including hydrogen atoms). The all-atom clashscore for this structure is 9.

All (117) close contacts within the same asymmetric unit are listed below, sorted by their clash magnitude.

Atom-1	Atom-2	Interatomic distance (Å)	Clash overlap (Å)
1:A:194:LEU:HD11	1:A:198[B]:MSE:CE	1.79	1.11
1:B:157[A]:ARG:HG2	1:B:157[A]:ARG:HH11	1.14	1.07
1:B:21:GLU:CD	1:B:24[B]:ARG:HH21	1.57	1.05
1:C:194:LEU:CD1	1:C:198[B]:MSE:HE3	1.89	1.01
1:D:155:SER:OG	1:D:157:ARG:HB3	1.61	1.00
1:B:157[A]:ARG:HH11	1:B:157[A]:ARG:CG	1.74	1.00
1:A:194:LEU:HD11	1:A:198[B]:MSE:HE3	1.43	0.99
1:A:194:LEU:CD1	1:A:198[B]:MSE:HE3	1.97	0.94
1:C:194:LEU:HD11	1:C:198[B]:MSE:CE	1.99	0.93
1:B:194:LEU:HD11	1:B:198[B]:MSE:HE3	1.50	0.91
1:D:157:ARG:HD2	1:D:160:GLN:HG3	1.52	0.91
1:B:194:LEU:CD1	1:B:198[B]:MSE:HE3	2.01	0.90
1:A:194:LEU:HD11	1:A:198[A]:MSE:HE3	1.51	0.90
1:D:96[B]:HIS:CE1	1:D:130:ARG:NH1	2.40	0.89
1:C:194:LEU:HD11	1:C:198[B]:MSE:HE3	1.56	0.87
1:A:194:LEU:HD11	1:A:198[B]:MSE:HE1	1.56	0.86
1:D:157:ARG:CD	1:D:160:GLN:HG3	2.07	0.85
1:D:194:LEU:CD1	1:D:198[B]:MSE:HE3	2.08	0.84
1:B:116[B]:THR:HG21	6:B:277:HOH:O	1.80	0.81
1:A:160:GLN:O	1:A:163:VAL:HG23	1.81	0.81
1:D:194:LEU:HD11	1:D:198[B]:MSE:HE3	1.62	0.81
1:A:194:LEU:HD11	1:A:198[A]:MSE:CE	2.10	0.80

Continued on next page...

Continued from previous page...

Atom-1	Atom-2	Interatomic distance (Å)	Clash overlap (Å)
1:B:21:GLU:CD	1:B:24[B]:ARG:NH2	2.36	0.79
1:C:157:ARG:HD3	1:C:160:GLN:HG3	1.65	0.79
1:B:157[A]:ARG:HG2	1:B:157[A]:ARG:NH1	1.95	0.76
1:D:8:GLN:HG3	1:D:10:ARG:H	1.54	0.72
1:B:52:HIS:NE2	3:B:206:EDO:H11	2.05	0.71
1:B:194:LEU:HD11	1:B:198[B]:MSE:CE	2.19	0.71
1:C:96[B]:HIS:CE1	1:C:130:ARG:NH1	2.58	0.71
1:B:155:SER:OG	1:B:157[A]:ARG:HG3	1.93	0.69
1:B:111:LEU:HD11	1:B:198[B]:MSE:SE	2.42	0.69
1:C:194:LEU:HD12	1:C:198[B]:MSE:HE3	1.74	0.66
1:D:155:SER:HG	1:D:157:ARG:HB3	1.59	0.66
1:D:157:ARG:HD3	1:D:159:TRP:HB3	1.78	0.66
3:B:209:EDO:O1	3:B:210:EDO:H22	1.97	0.65
1:B:21:GLU:HG3	1:B:25:MSE:HE3	1.80	0.64
1:D:194:LEU:HD11	1:D:198[B]:MSE:CE	2.28	0.64
1:A:194:LEU:CD1	1:A:198[A]:MSE:CE	2.75	0.64
1:D:155:SER:C	1:D:157:ARG:H	2.01	0.63
1:D:157:ARG:HD2	1:D:160:GLN:CG	2.26	0.63
1:B:116[B]:THR:CG2	6:B:277:HOH:O	2.41	0.62
1:C:194:LEU:CD1	1:C:198[B]:MSE:CE	2.63	0.62
1:A:194:LEU:CD1	1:A:198[A]:MSE:HE2	2.30	0.61
1:D:113:VAL:O	1:D:116:THR:HG22	2.01	0.61
1:D:96[B]:HIS:CE1	1:D:130:ARG:HH11	2.19	0.59
1:D:30:ALA:HB2	1:D:124[B]:VAL:HG23	1.82	0.59
1:B:157[A]:ARG:CG	1:B:157[A]:ARG:NH1	2.43	0.58
1:D:111:LEU:HD11	1:D:198[B]:MSE:SE	2.54	0.58
1:D:159:TRP:O	1:D:162:GLN:HG2	2.03	0.58
1:C:157:ARG:HD3	1:C:160:GLN:CG	2.33	0.58
1:A:160:GLN:O	1:A:163:VAL:CG2	2.51	0.57
1:C:21:GLU:CG	1:C:25:MSE:HE3	2.35	0.57
1:D:13:LEU:HD12	6:D:251:HOH:O	2.05	0.56
1:C:157:ARG:CD	1:C:160:GLN:HG3	2.34	0.56
1:C:100[A]:ASP:OD2	1:D:104:ARG:NH2	2.38	0.55
1:A:9:MSE:O	1:A:9:MSE:HG3	2.05	0.55
1:C:20:ALA:O	1:C:24:ARG:HG3	2.08	0.54
1:D:157:ARG:HG3	1:D:159:TRP:H	1.73	0.54
1:A:194:LEU:HD12	1:A:198[B]:MSE:HE3	1.88	0.53
1:D:120:ARG:HH12	3:D:208:EDO:H22	1.74	0.53
1:D:157:ARG:HD3	1:D:160:GLN:HG3	1.86	0.53
1:D:157:ARG:CG	1:D:160:GLN:H	2.20	0.53
1:D:133:VAL:HG13	1:D:163:VAL:HG12	1.91	0.53

Continued on next page...

Continued from previous page...

Atom-1	Atom-2	Interatomic distance (Å)	Clash overlap (Å)
1:A:194:LEU:HD12	1:A:198[A]:MSE:HE2	1.90	0.52
1:D:8:GLN:HG3	1:D:9:MSE:N	2.23	0.52
1:C:152[A]:ASP:CG	1:C:175:ARG:HH11	2.13	0.51
1:A:9:MSE:O	1:A:9:MSE:CG	2.58	0.51
1:D:157:ARG:HG2	1:D:160:GLN:H	1.75	0.51
1:D:47:GLU:HG2	3:D:202:EDO:H21	1.93	0.51
3:B:206:EDO:H12	3:B:213:EDO:O1	2.10	0.51
1:A:90:PRO:HG2	3:A:203:EDO:H12	1.94	0.49
1:A:87:ASP:H	3:A:210:EDO:H21	1.79	0.48
1:C:184:GLN:HB2	1:C:185:PRO:HD2	1.95	0.48
1:C:194:LEU:HD11	1:C:198[B]:MSE:HE1	1.89	0.48
1:B:21:GLU:CG	1:B:25:MSE:HE3	2.42	0.48
1:D:155:SER:C	1:D:157:ARG:N	2.67	0.48
1:C:93:ASP:O	1:C:96[B]:HIS:HB2	2.14	0.47
1:B:87:ASP:H	3:B:209:EDO:C1	2.26	0.47
1:D:30:ALA:HB2	1:D:124[B]:VAL:CG2	2.44	0.47
1:A:90:PRO:HD2	3:A:203:EDO:C1	2.45	0.47
1:A:194:LEU:CD1	1:A:198[B]:MSE:CE	2.61	0.47
1:A:90:PRO:HD2	3:A:203:EDO:H11	1.97	0.47
1:B:200:SER:OG	3:B:205:EDO:H22	2.15	0.46
1:A:21:GLU:CG	1:A:25:MSE:HE3	2.46	0.46
1:D:171:LEU:CD2	1:D:173:ILE:HD11	2.46	0.46
1:B:20:ALA:O	1:B:24[A]:ARG:HG3	2.16	0.45
1:D:196:ARG:NE	1:D:196:ARG:HA	2.31	0.45
1:D:8:GLN:CG	1:D:9:MSE:N	2.80	0.45
1:A:196[B]:ARG:HH22	3:A:211:EDO:C1	2.29	0.45
1:A:19:GLU:OE2	1:A:175:ARG:HG2	2.18	0.44
1:C:24:ARG:O	1:C:28:GLU:HG3	2.18	0.44
3:B:204:EDO:O2	6:B:359:HOH:O	2.21	0.44
1:C:157:ARG:HD3	1:C:160:GLN:CD	2.38	0.44
1:D:109:TYR:HB3	1:D:110:PRO:HD3	1.99	0.44
1:A:74:PRO:HA	1:A:75:PRO:HD3	1.92	0.43
1:D:120:ARG:NH1	3:D:208:EDO:H22	2.33	0.43
1:A:195:ILE:HG12	1:B:195:ILE:HG12	2.01	0.43
1:B:87:ASP:HB2	3:B:209:EDO:H12	2.01	0.42
1:C:155:SER:C	1:C:157:ARG:H	2.22	0.42
1:A:20:ALA:O	1:A:24:ARG:HG3	2.19	0.42
1:C:111:LEU:HD11	1:C:198[B]:MSE:SE	2.70	0.42
1:A:67:LYS:HZ2	3:A:209:EDO:H11	1.85	0.42
1:C:194:LEU:HD11	1:C:198[A]:MSE:CE	2.49	0.42
1:B:113:VAL:O	1:B:116[A]:THR:HG22	2.20	0.42

Continued on next page...

Continued from previous page...

Atom-1	Atom-2	Interatomic distance (Å)	Clash overlap (Å)
1:D:109:TYR:HB3	1:D:110:PRO:CD	2.50	0.42
1:D:171:LEU:CD2	1:D:173:ILE:CD1	2.98	0.41
1:A:106:TYR:N	1:A:107:PRO:CD	2.83	0.41
1:D:157:ARG:HG3	1:D:159:TRP:N	2.35	0.41
1:C:194:LEU:CD1	1:C:198[A]:MSE:HE2	2.50	0.41
1:D:157:ARG:HG2	1:D:157:ARG:O	2.19	0.41
1:B:194:LEU:HD11	1:B:198[A]:MSE:HE3	2.03	0.41
1:A:90:PRO:CG	3:A:203:EDO:H12	2.51	0.41
1:A:146:PRO:HA	1:A:181:VAL:O	2.20	0.41
1:C:157:ARG:HG3	1:C:160:GLN:H	1.86	0.41
1:B:194:LEU:HD12	1:B:198[B]:MSE:HE3	1.97	0.40
3:B:206:EDO:H12	3:B:213:EDO:HO1	1.85	0.40
1:D:47:GLU:CG	3:D:202:EDO:H21	2.52	0.40

There are no symmetry-related clashes.

5.3 Torsion angles [i](#)

5.3.1 Protein backbone [i](#)

In the following table, the Percentiles column shows the percent Ramachandran outliers of the chain as a percentile score with respect to all X-ray entries followed by that with respect to entries of similar resolution.

The Analysed column shows the number of residues for which the backbone conformation was analysed, and the total number of residues.

Mol	Chain	Analysed	Favoured	Allowed	Outliers	Percentiles	
1	A	197/202 (98%)	194 (98%)	3 (2%)	0	100	100
1	B	201/202 (100%)	198 (98%)	3 (2%)	0	100	100
1	C	198/202 (98%)	193 (98%)	5 (2%)	0	100	100
1	D	201/202 (100%)	197 (98%)	3 (2%)	1 (0%)	29	15
All	All	797/808 (99%)	782 (98%)	14 (2%)	1 (0%)	51	36

All (1) Ramachandran outliers are listed below:

Mol	Chain	Res	Type
1	D	156	GLN

5.3.2 Protein sidechains [i](#)

In the following table, the Percentiles column shows the percent sidechain outliers of the chain as a percentile score with respect to all X-ray entries followed by that with respect to entries of similar resolution.

The Analysed column shows the number of residues for which the sidechain conformation was analysed, and the total number of residues.

Mol	Chain	Analysed	Rotameric	Outliers	Percentiles	
1	A	157/156 (101%)	153 (98%)	4 (2%)	47	34
1	B	166/156 (106%)	162 (98%)	4 (2%)	49	36
1	C	158/156 (101%)	154 (98%)	4 (2%)	47	34
1	D	163/156 (104%)	160 (98%)	3 (2%)	59	48
All	All	644/624 (103%)	629 (98%)	15 (2%)	50	37

All (15) residues with a non-rotameric sidechain are listed below:

Mol	Chain	Res	Type
1	A	9	MSE
1	A	14	THR
1	A	151	PHE
1	A	159	TRP
1	B	23	LEU
1	B	156	GLN
1	B	157[A]	ARG
1	B	157[B]	ARG
1	C	151	PHE
1	C	158	ARG
1	C	175	ARG
1	C	196	ARG
1	D	151	PHE
1	D	157	ARG
1	D	196	ARG

Sometimes sidechains can be flipped to improve hydrogen bonding and reduce clashes. There are no such sidechains identified.

5.3.3 RNA [i](#)

There are no RNA molecules in this entry.

5.4 Non-standard residues in protein, DNA, RNA chains [i](#)

There are no non-standard protein/DNA/RNA residues in this entry.

5.5 Carbohydrates [i](#)

There are no monosaccharides in this entry.

5.6 Ligand geometry [i](#)

50 ligands are modelled in this entry.

In the following table, the Counts columns list the number of bonds (or angles) for which Mogul statistics could be retrieved, the number of bonds (or angles) that are observed in the model and the number of bonds (or angles) that are defined in the Chemical Component Dictionary. The Link column lists molecule types, if any, to which the group is linked. The Z score for a bond length (or angle) is the number of standard deviations the observed value is removed from the expected value. A bond length (or angle) with $|Z| > 2$ is considered an outlier worth inspection. RMSZ is the root-mean-square of all Z scores of the bond lengths (or angles).

Mol	Type	Chain	Res	Link	Bond lengths			Bond angles		
					Counts	RMSZ	$\# Z > 2$	Counts	RMSZ	$\# Z > 2$
3	EDO	A	208	-	3,3,3	0.53	0	2,2,2	0.42	0
3	EDO	B	210	-	3,3,3	0.56	0	2,2,2	0.28	0
3	EDO	A	210	-	3,3,3	0.80	0	2,2,2	0.34	0
3	EDO	B	204	-	3,3,3	0.46	0	2,2,2	0.35	0
3	EDO	B	207	-	3,3,3	0.35	0	2,2,2	0.47	0
3	EDO	D	214	-	3,3,3	0.19	0	2,2,2	1.57	0
3	EDO	D	215	-	3,3,3	0.52	0	2,2,2	0.20	0
3	EDO	B	205	-	3,3,3	0.67	0	2,2,2	0.20	0
3	EDO	A	211	-	3,3,3	0.43	0	2,2,2	0.29	0
3	EDO	C	203	-	3,3,3	0.47	0	2,2,2	0.34	0
3	EDO	D	207	-	3,3,3	0.33	0	2,2,2	0.38	0
3	EDO	B	212	-	3,3,3	0.52	0	2,2,2	0.14	0
3	EDO	C	206	-	3,3,3	0.43	0	2,2,2	0.34	0
3	EDO	B	213	-	3,3,3	0.59	0	2,2,2	0.23	0
3	EDO	B	203	-	3,3,3	0.32	0	2,2,2	0.69	0
3	EDO	D	212	-	3,3,3	0.53	0	2,2,2	0.09	0
3	EDO	B	206	-	3,3,3	0.54	0	2,2,2	0.36	0
3	EDO	D	213	-	3,3,3	0.31	0	2,2,2	0.53	0
3	EDO	B	211	-	3,3,3	0.20	0	2,2,2	1.94	1 (50%)
2	SO4	B	202	-	4,4,4	0.35	0	6,6,6	0.17	0
3	EDO	A	209	-	3,3,3	0.35	0	2,2,2	0.41	0
3	EDO	C	204	-	3,3,3	0.47	0	2,2,2	0.06	0

Mol	Type	Chain	Res	Link	Bond lengths			Bond angles		
					Counts	RMSZ	# Z > 2	Counts	RMSZ	# Z > 2
3	EDO	C	205	-	3,3,3	0.25	0	2,2,2	0.71	0
3	EDO	C	207	-	3,3,3	0.46	0	2,2,2	0.58	0
3	EDO	D	209	-	3,3,3	0.33	0	2,2,2	1.34	0
3	EDO	D	205	-	3,3,3	0.50	0	2,2,2	0.22	0
3	EDO	D	204	-	3,3,3	0.45	0	2,2,2	0.47	0
3	EDO	B	214	-	3,3,3	0.07	0	2,2,2	1.81	0
3	EDO	C	208	-	3,3,3	0.15	0	2,2,2	1.14	0
3	EDO	B	208	-	3,3,3	0.32	0	2,2,2	0.84	0
3	EDO	C	202	-	3,3,3	0.60	0	2,2,2	0.13	0
2	SO4	A	202	-	4,4,4	0.22	0	6,6,6	0.12	0
3	EDO	A	214	-	3,3,3	0.33	0	2,2,2	0.71	0
3	EDO	D	202	-	3,3,3	0.50	0	2,2,2	0.19	0
3	EDO	D	208	-	3,3,3	0.56	0	2,2,2	0.10	0
3	EDO	A	204	-	3,3,3	0.51	0	2,2,2	0.19	0
5	PG4	D	216	-	12,12,12	0.54	0	11,11,11	0.48	0
3	EDO	A	205	-	3,3,3	0.48	0	2,2,2	0.13	0
4	GOL	C	209	-	5,5,5	0.46	0	5,5,5	0.57	0
3	EDO	D	211	-	3,3,3	0.33	0	2,2,2	0.89	0
3	EDO	A	213	-	3,3,3	0.43	0	2,2,2	0.38	0
3	EDO	B	209	-	3,3,3	0.71	0	2,2,2	0.26	0
3	EDO	A	203	-	3,3,3	0.52	0	2,2,2	0.44	0
3	EDO	A	212	-	3,3,3	0.64	0	2,2,2	0.22	0
3	EDO	D	206	-	3,3,3	0.47	0	2,2,2	0.57	0
3	EDO	B	215	-	3,3,3	0.29	0	2,2,2	0.87	0
3	EDO	D	203	-	3,3,3	0.55	0	2,2,2	0.38	0
3	EDO	D	210	-	3,3,3	0.38	0	2,2,2	0.24	0
3	EDO	A	207	-	3,3,3	0.53	0	2,2,2	0.34	0
3	EDO	A	206	-	3,3,3	0.30	0	2,2,2	0.80	0

In the following table, the Chirals column lists the number of chiral outliers, the number of chiral centers analysed, the number of these observed in the model and the number defined in the Chemical Component Dictionary. Similar counts are reported in the Torsion and Rings columns. '-' means no outliers of that kind were identified.

Mol	Type	Chain	Res	Link	Chirals	Torsions	Rings
3	EDO	A	208	-	-	1/1/1/1	-
3	EDO	B	210	-	-	1/1/1/1	-
3	EDO	A	210	-	-	0/1/1/1	-
3	EDO	B	204	-	-	1/1/1/1	-
3	EDO	B	207	-	-	1/1/1/1	-
3	EDO	D	214	-	-	1/1/1/1	-
3	EDO	D	215	-	-	1/1/1/1	-
3	EDO	B	205	-	-	1/1/1/1	-

Continued on next page...

Continued from previous page...

Mol	Type	Chain	Res	Link	Chirals	Torsions	Rings
3	EDO	A	211	-	-	1/1/1/1	-
3	EDO	C	203	-	-	1/1/1/1	-
3	EDO	D	207	-	-	1/1/1/1	-
3	EDO	B	212	-	-	0/1/1/1	-
3	EDO	C	206	-	-	1/1/1/1	-
3	EDO	B	213	-	-	0/1/1/1	-
3	EDO	B	203	-	-	0/1/1/1	-
3	EDO	D	212	-	-	0/1/1/1	-
3	EDO	B	206	-	-	1/1/1/1	-
3	EDO	D	213	-	-	0/1/1/1	-
3	EDO	B	211	-	-	1/1/1/1	-
3	EDO	A	209	-	-	0/1/1/1	-
3	EDO	C	204	-	-	0/1/1/1	-
3	EDO	C	205	-	-	1/1/1/1	-
3	EDO	C	207	-	-	1/1/1/1	-
3	EDO	D	209	-	-	1/1/1/1	-
3	EDO	D	205	-	-	1/1/1/1	-
3	EDO	D	204	-	-	0/1/1/1	-
3	EDO	B	214	-	-	1/1/1/1	-
3	EDO	C	208	-	-	1/1/1/1	-
3	EDO	B	208	-	-	1/1/1/1	-
3	EDO	C	202	-	-	1/1/1/1	-
3	EDO	A	214	-	-	1/1/1/1	-
3	EDO	D	202	-	-	0/1/1/1	-
3	EDO	D	208	-	-	1/1/1/1	-
3	EDO	A	204	-	-	0/1/1/1	-
5	PG4	D	216	-	-	7/10/10/10	-
3	EDO	A	205	-	-	0/1/1/1	-
4	GOL	C	209	-	-	3/4/4/4	-
3	EDO	D	211	-	-	1/1/1/1	-
3	EDO	A	213	-	-	1/1/1/1	-
3	EDO	B	209	-	-	1/1/1/1	-
3	EDO	A	203	-	-	0/1/1/1	-
3	EDO	A	212	-	-	0/1/1/1	-
3	EDO	D	206	-	-	0/1/1/1	-
3	EDO	B	215	-	-	0/1/1/1	-
3	EDO	D	203	-	-	0/1/1/1	-
3	EDO	D	210	-	-	1/1/1/1	-
3	EDO	A	207	-	-	1/1/1/1	-
3	EDO	A	206	-	-	1/1/1/1	-

There are no bond length outliers.

All (1) bond angle outliers are listed below:

Mol	Chain	Res	Type	Atoms	Z	Observed(°)	Ideal(°)
3	B	211	EDO	O2-C2-C1	-2.17	96.31	111.91

There are no chirality outliers.

All (39) torsion outliers are listed below:

Mol	Chain	Res	Type	Atoms
5	D	216	PG4	O3-C5-C6-O4
5	D	216	PG4	O2-C3-C4-O3
5	D	216	PG4	O1-C1-C2-O2
3	B	205	EDO	O1-C1-C2-O2
3	D	209	EDO	O1-C1-C2-O2
4	C	209	GOL	O1-C1-C2-C3
3	A	207	EDO	O1-C1-C2-O2
3	A	213	EDO	O1-C1-C2-O2
3	B	204	EDO	O1-C1-C2-O2
3	B	206	EDO	O1-C1-C2-O2
3	B	207	EDO	O1-C1-C2-O2
3	D	208	EDO	O1-C1-C2-O2
3	D	215	EDO	O1-C1-C2-O2
5	D	216	PG4	O4-C7-C8-O5
3	A	208	EDO	O1-C1-C2-O2
3	B	208	EDO	O1-C1-C2-O2
3	B	209	EDO	O1-C1-C2-O2
3	B	210	EDO	O1-C1-C2-O2
3	C	207	EDO	O1-C1-C2-O2
3	D	205	EDO	O1-C1-C2-O2
3	D	211	EDO	O1-C1-C2-O2
5	D	216	PG4	C1-C2-O2-C3
5	D	216	PG4	C6-C5-O3-C4
4	C	209	GOL	O1-C1-C2-O2
3	A	206	EDO	O1-C1-C2-O2
3	A	214	EDO	O1-C1-C2-O2
3	D	207	EDO	O1-C1-C2-O2
3	D	214	EDO	O1-C1-C2-O2
3	A	211	EDO	O1-C1-C2-O2
3	C	205	EDO	O1-C1-C2-O2
3	C	206	EDO	O1-C1-C2-O2
3	C	208	EDO	O1-C1-C2-O2
3	D	210	EDO	O1-C1-C2-O2
4	C	209	GOL	O2-C2-C3-O3
3	B	211	EDO	O1-C1-C2-O2

Continued on next page...

Continued from previous page...

Mol	Chain	Res	Type	Atoms
3	B	214	EDO	O1-C1-C2-O2
3	C	202	EDO	O1-C1-C2-O2
3	C	203	EDO	O1-C1-C2-O2
5	D	216	PG4	C4-C3-O2-C2

There are no ring outliers.

12 monomers are involved in 19 short contacts:

Mol	Chain	Res	Type	Clashes	Symm-Clashes
3	B	210	EDO	1	0
3	A	210	EDO	1	0
3	B	204	EDO	1	0
3	B	205	EDO	1	0
3	A	211	EDO	1	0
3	B	213	EDO	2	0
3	B	206	EDO	3	0
3	A	209	EDO	1	0
3	D	202	EDO	2	0
3	D	208	EDO	2	0
3	B	209	EDO	3	0
3	A	203	EDO	4	0

5.7 Other polymers [i](#)

There are no such residues in this entry.

5.8 Polymer linkage issues [i](#)

There are no chain breaks in this entry.

6 Fit of model and data

6.1 Protein, DNA and RNA chains

In the following table, the column labelled ‘#RSRZ > 2’ contains the number (and percentage) of RSRZ outliers, followed by percent RSRZ outliers for the chain as percentile scores relative to all X-ray entries and entries of similar resolution. The OWAB column contains the minimum, median, 95th percentile and maximum values of the occupancy-weighted average B-factor per residue. The column labelled ‘Q < 0.9’ lists the number of (and percentage) of residues with an average occupancy less than 0.9.

Mol	Chain	Analysed	<RSRZ>	#RSRZ>2	OWAB(Å ²)	Q<0.9
1	A	186/202 (92%)	-0.13	3 (1%) 72 68	16, 24, 42, 61	0
1	B	186/202 (92%)	-0.24	0 100 100	16, 22, 37, 64	0
1	C	186/202 (92%)	0.35	15 (8%) 12 9	20, 28, 45, 69	0
1	D	186/202 (92%)	-0.00	9 (4%) 30 25	16, 23, 38, 69	0
All	All	744/808 (92%)	-0.01	27 (3%) 42 37	16, 25, 41, 69	0

All (27) RSRZ outliers are listed below:

Mol	Chain	Res	Type	RSRZ
1	C	158	ARG	7.0
1	C	156	GLN	5.5
1	A	159	TRP	5.0
1	C	155	SER	4.8
1	C	159	TRP	4.5
1	C	94	TRP	4.3
1	D	159	TRP	3.8
1	C	157	ARG	3.7
1	D	94	TRP	3.7
1	C	118	GLY	3.3
1	A	157	ARG	2.8
1	D	158	ARG	2.7
1	D	157	ARG	2.6
1	D	93	ASP	2.5
1	C	18	ALA	2.5
1	D	156	GLN	2.4
1	D	36	TYR	2.3
1	D	126	LEU	2.3
1	C	125	VAL	2.3
1	C	14	THR	2.3
1	C	34	LEU	2.3

Continued on next page...

Continued from previous page...

Mol	Chain	Res	Type	RSRZ
1	C	126	LEU	2.3
1	C	136	ALA	2.2
1	D	14[A]	THR	2.2
1	A	8	GLN	2.2
1	C	8	GLN	2.1
1	C	135	CYS	2.0

6.2 Non-standard residues in protein, DNA, RNA chains [i](#)

There are no non-standard protein/DNA/RNA residues in this entry.

6.3 Carbohydrates [i](#)

There are no monosaccharides in this entry.

6.4 Ligands [i](#)

In the following table, the Atoms column lists the number of modelled atoms in the group and the number defined in the chemical component dictionary. The B-factors column lists the minimum, median, 95th percentile and maximum values of B factors of atoms in the group. The column labelled 'Q< 0.9' lists the number of atoms with occupancy less than 0.9.

Mol	Type	Chain	Res	Atoms	RSCC	RSR	B-factors(Å ²)	Q<0.9
5	PG4	D	216	13/13	0.62	0.22	50,66,70,72	0
3	EDO	C	203	4/4	0.63	0.49	57,67,68,69	0
3	EDO	A	208	4/4	0.70	0.25	57,60,63,63	0
3	EDO	D	203	4/4	0.72	0.25	40,51,52,59	0
3	EDO	A	211	4/4	0.73	0.29	63,64,65,66	0
3	EDO	C	207	4/4	0.76	0.21	62,64,65,65	0
3	EDO	A	214	4/4	0.80	0.15	61,62,64,66	0
3	EDO	C	202	4/4	0.80	0.25	46,48,55,59	0
3	EDO	B	215	4/4	0.81	0.14	58,61,65,66	0
3	EDO	B	203	4/4	0.81	0.22	49,51,54,57	0
3	EDO	D	206	4/4	0.82	0.38	37,54,55,59	0
3	EDO	C	205	4/4	0.82	0.14	52,53,56,57	0
3	EDO	B	212	4/4	0.83	0.18	57,68,68,69	0
3	EDO	C	206	4/4	0.83	0.17	50,51,55,59	0
3	EDO	A	207	4/4	0.83	0.14	47,50,51,52	0
3	EDO	A	210	4/4	0.84	0.29	31,34,44,47	0
3	EDO	B	210	4/4	0.84	0.16	49,52,57,59	0

Continued on next page...

Continued from previous page...

Mol	Type	Chain	Res	Atoms	RSCC	RSR	B-factors(Å ²)	Q<0.9
3	EDO	B	205	4/4	0.85	0.21	34,39,39,50	0
3	EDO	D	208	4/4	0.85	0.19	54,54,57,62	0
3	EDO	B	204	4/4	0.85	0.24	52,53,56,62	0
3	EDO	B	207	4/4	0.86	0.11	46,47,50,53	0
3	EDO	D	209	4/4	0.87	0.15	53,56,58,61	0
3	EDO	B	214	4/4	0.89	0.14	37,40,42,46	0
3	EDO	B	209	4/4	0.89	0.23	38,39,50,54	0
3	EDO	B	206	4/4	0.89	0.17	33,35,45,56	0
3	EDO	D	213	4/4	0.89	0.17	28,44,44,54	0
3	EDO	B	208	4/4	0.89	0.19	57,59,59,60	0
3	EDO	A	209	4/4	0.90	0.22	46,50,54,61	0
3	EDO	D	215	4/4	0.90	0.18	40,52,52,53	0
3	EDO	D	202	4/4	0.90	0.23	35,48,49,51	0
3	EDO	D	214	4/4	0.91	0.10	36,41,41,50	0
3	EDO	D	212	4/4	0.91	0.26	48,50,51,51	0
4	GOL	C	209	6/6	0.91	0.26	26,43,46,59	0
3	EDO	A	213	4/4	0.91	0.30	45,48,49,51	0
3	EDO	A	212	4/4	0.92	0.21	35,38,46,47	0
3	EDO	D	205	4/4	0.92	0.15	37,40,42,43	0
3	EDO	C	204	4/4	0.92	0.09	29,31,32,33	0
3	EDO	C	208	4/4	0.92	0.13	33,47,47,49	0
3	EDO	B	211	4/4	0.92	0.16	42,53,56,59	0
3	EDO	D	210	4/4	0.92	0.15	42,45,49,53	0
3	EDO	A	204	4/4	0.94	0.14	21,38,38,47	0
3	EDO	A	206	4/4	0.94	0.12	54,56,56,58	0
3	EDO	D	211	4/4	0.94	0.23	26,42,42,56	0
3	EDO	B	213	4/4	0.95	0.07	21,22,24,24	0
3	EDO	D	207	4/4	0.95	0.25	30,41,44,46	0
3	EDO	A	205	4/4	0.96	0.09	23,25,26,26	0
3	EDO	D	204	4/4	0.97	0.06	20,22,22,24	0
3	EDO	A	203	4/4	0.97	0.32	34,42,43,46	0
2	SO4	B	202	5/5	0.98	0.16	33,38,50,52	0
2	SO4	A	202	5/5	0.99	0.22	51,55,60,61	0

6.5 Other polymers [i](#)

There are no such residues in this entry.