



# Full wwPDB X-ray Structure Validation Report ⓘ

May 13, 2020 – 03:52 am BST

PDB ID : 3CB5  
Title : Crystal Structure of the *S. pombe* Peptidase Homology Domain of FACT complex subunit Spt16 (form A)  
Authors : Stuwe, T.; Hothorn, M.; Lejeune, E.; Bortfeld-Miller, M.; Scheffzek, K.; Ladurner, A.G.  
Deposited on : 2008-02-21  
Resolution : 2.05 Å(reported)

This is a Full wwPDB X-ray Structure Validation Report for a publicly released PDB entry.

We welcome your comments at [validation@mail.wwpdb.org](mailto:validation@mail.wwpdb.org)

A user guide is available at

<https://www.wwpdb.org/validation/2017/XrayValidationReportHelp>

with specific help available everywhere you see the ⓘ symbol.

---

The following versions of software and data (see [references ⓘ](#)) were used in the production of this report:

MolProbity : 4.02b-467  
Mogul : 1.8.5 (274361), CSD as541be (2020)  
Xtriage (Phenix) : 1.13  
EDS : 2.11  
buster-report : 1.1.7 (2018)  
Percentile statistics : 20191225.v01 (using entries in the PDB archive December 25th 2019)  
Refmac : 5.8.0158  
CCP4 : 7.0.044 (Gargrove)  
Ideal geometry (proteins) : Engh & Huber (2001)  
Ideal geometry (DNA, RNA) : Parkinson et al. (1996)  
Validation Pipeline (wwPDB-VP) : 2.11

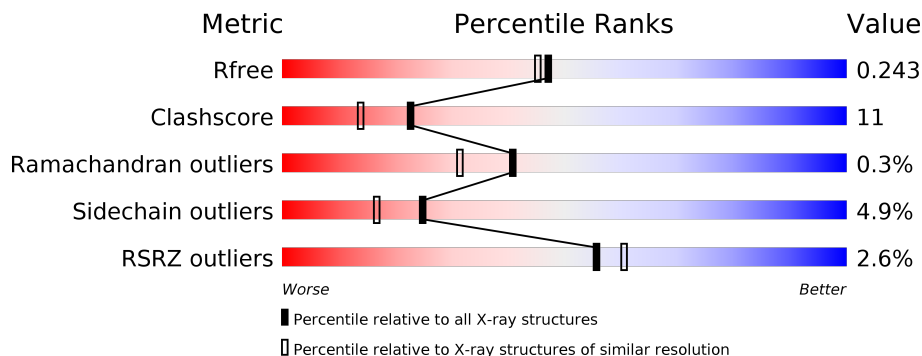
# 1 Overall quality at a glance

The following experimental techniques were used to determine the structure:

*X-RAY DIFFRACTION*

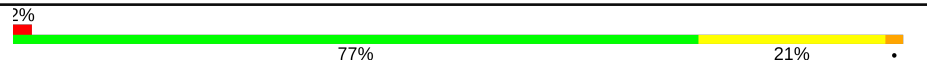
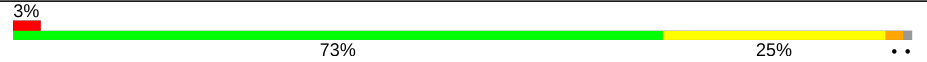
The reported resolution of this entry is 2.05 Å.

Percentile scores (ranging between 0-100) for global validation metrics of the entry are shown in the following graphic. The table shows the number of entries on which the scores are based.



Metric	Whole archive (#Entries)	Similar resolution (#Entries, resolution range(Å))
$R_{free}$	130704	1692 (2.04-2.04)
Clashscore	141614	1773 (2.04-2.04)
Ramachandran outliers	138981	1752 (2.04-2.04)
Sidechain outliers	138945	1752 (2.04-2.04)
RSRZ outliers	127900	1672 (2.04-2.04)

The table below summarises the geometric issues observed across the polymeric chains and their fit to the electron density. The red, orange, yellow and green segments on the lower bar indicate the fraction of residues that contain outliers for  $\geq 3$ , 2, 1 and 0 types of geometric quality criteria respectively. A grey segment represents the fraction of residues that are not modelled. The numeric value for each fraction is indicated below the corresponding segment, with a dot representing fractions  $\leq 5\%$ . The upper red bar (where present) indicates the fraction of residues that have poor fit to the electron density. The numeric value is given above the bar.

Mol	Chain	Length	Quality of chain
1	A	444	 2% 77% 21%
1	B	444	 3% 73% 25%

## 2 Entry composition [i](#)

There are 3 unique types of molecules in this entry. The entry contains 7487 atoms, of which 0 are hydrogens and 0 are deuteriums.

In the tables below, the ZeroOcc column contains the number of atoms modelled with zero occupancy, the AltConf column contains the number of residues with at least one atom in alternate conformation and the Trace column contains the number of residues modelled with at most 2 atoms.

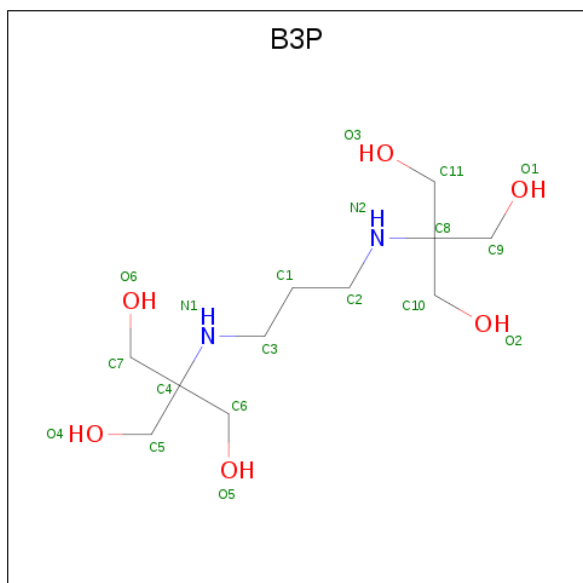
- Molecule 1 is a protein called FACT complex subunit spt16.

Mol	Chain	Residues	Atoms					ZeroOcc	AltConf	Trace	
			Total	C	N	O	S				Se
1	A	444	3518	2245	585	677	6	5	0	1	0
1	B	440	3499	2235	577	675	6	6	0	3	0

There are 4 discrepancies between the modelled and reference sequences:

Chain	Residue	Modelled	Actual	Comment	Reference
A	-1	GLY	-	EXPRESSION TAG	UNP O94267
A	0	ALA	-	EXPRESSION TAG	UNP O94267
B	-1	GLY	-	EXPRESSION TAG	UNP O94267
B	0	ALA	-	EXPRESSION TAG	UNP O94267

- Molecule 2 is 2-[3-(2-HYDROXY-1,1-DIHYDROXYMETHYL-ETHYLAMINO)-PROPYL AMINO]-2-HYDROXYMETHYL-PROPANE-1,3-DIOL (three-letter code: B3P) (formula:  $C_{11}H_{26}N_2O_6$ ).



Mol	Chain	Residues	Atoms				ZeroOcc	AltConf
			Total	C	N	O		
2	A	1	19	11	2	6	0	0

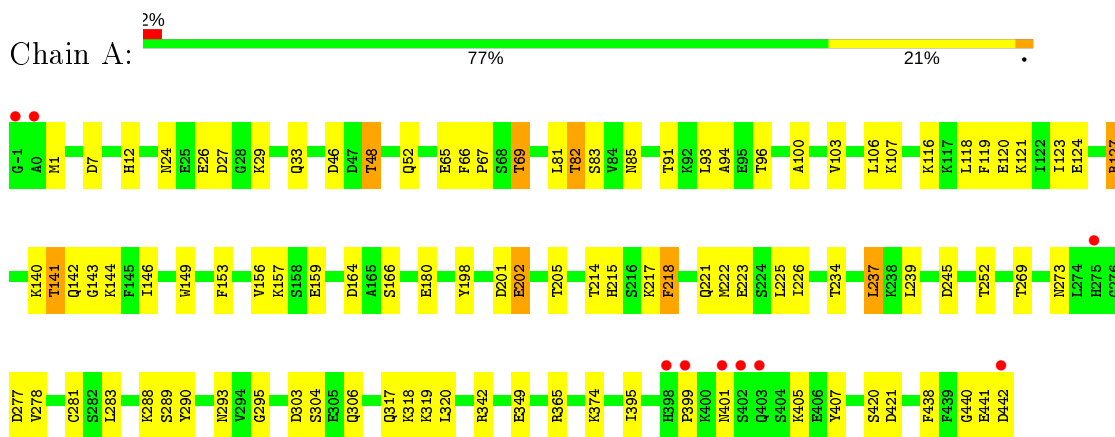
- Molecule 3 is water.

Mol	Chain	Residues	Atoms		ZeroOcc	AltConf
			Total	O		
3	A	275	275	275	0	0
3	B	176	176	176	0	0

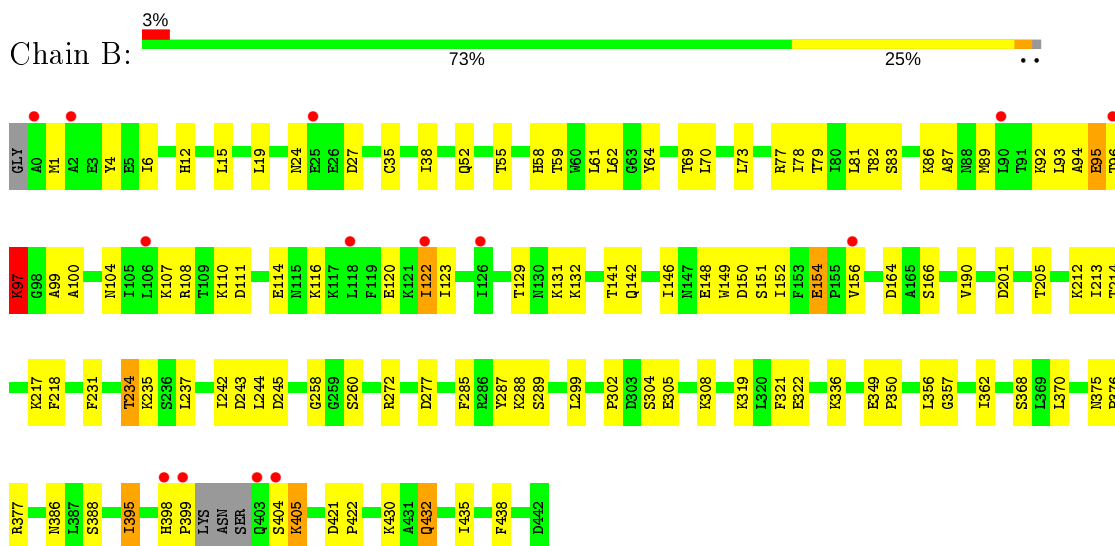
### 3 Residue-property plots [i](#)

These plots are drawn for all protein, RNA and DNA chains in the entry. The first graphic for a chain summarises the proportions of the various outlier classes displayed in the second graphic. The second graphic shows the sequence view annotated by issues in geometry and electron density. Residues are color-coded according to the number of geometric quality criteria for which they contain at least one outlier: green = 0, yellow = 1, orange = 2 and red = 3 or more. A red dot above a residue indicates a poor fit to the electron density ( $RSRZ > 2$ ). Stretches of 2 or more consecutive residues without any outlier are shown as a green connector. Residues present in the sample, but not in the model, are shown in grey.

- Molecule 1: FACT complex subunit spt16



- Molecule 1: FACT complex subunit spt16



## 4 Data and refinement statistics

Property	Value	Source
Space group	P 21 21 21	Depositor
Cell constants a, b, c, $\alpha$ , $\beta$ , $\gamma$	97.07Å 101.65Å 103.51Å 90.00° 90.00° 90.00°	Depositor
Resolution (Å)	46.12 – 2.05 46.12 – 2.05	Depositor EDS
% Data completeness (in resolution range)	99.8 (46.12-2.05) 99.8 (46.12-2.05)	Depositor EDS
$R_{merge}$	(Not available)	Depositor
$R_{sym}$	0.07	Depositor
$\langle I/\sigma(I) \rangle$ <sup>1</sup>	1.92 (at 2.05Å)	Xtrriage
Refinement program	REFMAC 5.4.0067	Depositor
R, $R_{free}$	0.206 , 0.245 0.207 , 0.243	Depositor DCC
$R_{free}$ test set	3293 reflections (5.08%)	wwPDB-VP
Wilson B-factor (Å <sup>2</sup> )	35.2	Xtrriage
Anisotropy	0.308	Xtrriage
Bulk solvent $k_{sol}$ (e/Å <sup>3</sup> ), $B_{sol}$ (Å <sup>2</sup> )	0.33 , 47.7	EDS
L-test for twinning <sup>2</sup>	$\langle  L  \rangle = 0.48$ , $\langle L^2 \rangle = 0.31$	Xtrriage
Estimated twinning fraction	0.017 for -h,l,k	Xtrriage
$F_o, F_c$ correlation	0.95	EDS
Total number of atoms	7487	wwPDB-VP
Average B, all atoms (Å <sup>2</sup> )	27.0	wwPDB-VP

Xtrriage's analysis on translational NCS is as follows: *The largest off-origin peak in the Patterson function is 3.83% of the height of the origin peak. No significant pseudotranslation is detected.*

<sup>1</sup>Intensities estimated from amplitudes.

<sup>2</sup>Theoretical values of  $\langle |L| \rangle$ ,  $\langle L^2 \rangle$  for acentric reflections are 0.5, 0.333 respectively for untwinned datasets, and 0.375, 0.2 for perfectly twinned datasets.

## 5 Model quality [i](#)

### 5.1 Standard geometry [i](#)

Bond lengths and bond angles in the following residue types are not validated in this section: B3P

The Z score for a bond length (or angle) is the number of standard deviations the observed value is removed from the expected value. A bond length (or angle) with  $|Z| > 5$  is considered an outlier worth inspection. RMSZ is the root-mean-square of all Z scores of the bond lengths (or angles).

Mol	Chain	Bond lengths		Bond angles	
		RMSZ	# Z  >5	RMSZ	# Z  >5
1	A	0.63	0/3582	0.80	0/4829
1	B	0.56	0/3567	0.76	1/4807 (0.0%)
All	All	0.60	0/7149	0.78	1/9636 (0.0%)

There are no bond length outliers.

All (1) bond angle outliers are listed below:

Mol	Chain	Res	Type	Atoms	Z	Observed(°)	Ideal(°)
1	B	399	PRO	N-CA-CB	5.67	110.10	103.30

There are no chirality outliers.

There are no planarity outliers.

### 5.2 Too-close contacts [i](#)

In the following table, the Non-H and H(model) columns list the number of non-hydrogen atoms and hydrogen atoms in the chain respectively. The H(added) column lists the number of hydrogen atoms added and optimized by MolProbity. The Clashes column lists the number of clashes within the asymmetric unit, whereas Symm-Clashes lists symmetry related clashes.

Mol	Chain	Non-H	H(model)	H(added)	Clashes	Symm-Clashes
1	A	3518	0	3524	73	0
1	B	3499	0	3509	92	0
2	A	19	0	26	2	0
3	A	275	0	0	5	0
3	B	176	0	0	5	0
All	All	7487	0	7059	162	0

The all-atom clashscore is defined as the number of clashes found per 1000 atoms (including

hydrogen atoms). The all-atom clashscore for this structure is 11.

All (162) close contacts within the same asymmetric unit are listed below, sorted by their clash magnitude.

Atom-1	Atom-2	Interatomic distance (Å)	Clash overlap (Å)
1:A:164:ASP:OD2	1:A:166:SER:HB2	1.59	1.00
1:B:395:ILE:H	1:B:395:ILE:HD13	1.26	0.98
1:B:97:LYS:HB3	1:B:97:LYS:NZ	1.87	0.89
1:B:164:ASP:OD1	1:B:166:SER:HB2	1.73	0.88
1:B:97:LYS:HB3	1:B:97:LYS:HZ3	1.38	0.88
1:A:201:ASP:O	1:A:205:THR:HG23	1.73	0.87
1:B:116:LYS:HG2	1:B:152:ILE:HD11	1.57	0.87
1:A:46:ASP:OD2	1:A:48:THR:HB	1.79	0.83
1:A:141:THR:HG23	1:A:146:ILE:HG13	1.62	0.81
1:A:342:ARG:HD3	1:A:349:GLU:OE1	1.82	0.80
1:B:97:LYS:CB	1:B:97:LYS:NZ	2.43	0.78
1:B:244:LEU:HD11	3:B:558:HOH:O	1.85	0.76
1:B:395:ILE:N	1:B:395:ILE:HD13	2.00	0.76
1:B:4:TYR:HB2	1:B:89[A]:MSE:HE1	1.68	0.75
1:A:288:LYS:O	1:A:289:SER:HB2	1.87	0.75
1:B:201:ASP:O	1:B:205:THR:HG23	1.86	0.74
1:A:52:GLN:HE22	1:A:140:LYS:H	1.35	0.73
1:B:287:TYR:CZ	1:B:288:LYS:HE3	2.22	0.73
1:A:82:THR:HG22	1:A:83:SER:H	1.53	0.72
1:A:116:LYS:O	1:A:120:GLU:HG3	1.91	0.71
1:A:12:HIS:CD2	1:A:100:ALA:H	2.09	0.71
1:A:24:ASN:HD22	1:A:27:ASP:H	1.39	0.70
1:A:69:THR:HG22	1:A:82:THR:HG23	1.73	0.70
1:A:223:GLU:OE1	1:A:252:THR:HG23	1.92	0.70
1:A:234:THR:HB	1:A:237:LEU:HD22	1.74	0.68
1:A:66:PHE:O	1:A:69:THR:HG23	1.94	0.68
1:B:154:GLU:OE1	1:B:154:GLU:HA	1.94	0.67
1:B:110:LYS:N	1:B:110:LYS:HD2	2.10	0.66
1:A:69:THR:CG2	1:A:82:THR:HG23	2.24	0.66
1:A:127:ARG:NH1	1:A:159:GLU:OE1	2.28	0.66
1:B:97:LYS:CB	1:B:97:LYS:HZ2	2.09	0.65
1:B:231:PHE:O	1:B:234:THR:HG22	1.95	0.65
1:B:97:LYS:O	1:B:97:LYS:HG2	1.97	0.65
1:A:420:SER:OG	1:A:421:ASP:N	2.31	0.63
1:B:55:THR:HG21	3:B:497:HOH:O	1.99	0.63
1:B:150:ASP:O	1:B:154:GLU:HB2	1.99	0.62
1:B:375:ASN:OD1	1:B:377:ARG:HG3	2.00	0.62
1:B:12:HIS:CD2	1:B:99:ALA:HA	2.35	0.61

*Continued on next page...*



*Continued from previous page...*

Atom-1	Atom-2	Interatomic distance (Å)	Clash overlap (Å)
1:B:213:ILE:HG13	1:B:217:LYS:HE3	1.82	0.60
1:B:234:THR:HG23	1:B:237:LEU:HD12	1.84	0.60
1:B:244:LEU:CD1	3:B:558:HOH:O	2.45	0.60
1:B:231:PHE:O	1:B:234:THR:CG2	2.51	0.59
1:B:110:LYS:N	1:B:110:LYS:CD	2.66	0.58
1:B:96:THR:HG22	1:B:97:LYS:N	2.18	0.58
1:B:69:THR:HG23	1:B:82:THR:HB	1.87	0.57
1:A:66:PHE:HB3	1:A:69:THR:HG21	1.87	0.57
1:B:97:LYS:O	1:B:97:LYS:CG	2.53	0.56
1:B:70:LEU:HD21	1:B:122:ILE:HD13	1.87	0.56
1:A:374:LYS:HG3	3:A:1232:HOH:O	2.04	0.56
1:B:12:HIS:HD2	1:B:100:ALA:H	1.51	0.56
1:A:303:ASP:OD1	1:A:303:ASP:C	2.44	0.56
1:B:288:LYS:O	1:B:289:SER:HB2	2.06	0.56
1:B:95:GLU:N	1:B:95:GLU:OE2	2.39	0.56
1:B:368:SER:O	1:B:377:ARG:HD2	2.06	0.55
1:B:319:LYS:O	1:B:322:GLU:HB3	2.06	0.55
1:B:302:PRO:HD2	1:B:438:PHE:CE2	2.43	0.54
1:B:242:ILE:O	1:B:244:LEU:HD12	2.07	0.54
1:B:77:ARG:HD2	1:B:104:ASN:HB2	1.90	0.54
1:B:129:THR:C	1:B:131:LYS:H	2.09	0.54
1:A:198:TYR:CE2	1:A:222:MSE:SE	3.11	0.53
1:B:96:THR:HG22	1:B:97:LYS:H	1.72	0.53
1:A:81:LEU:HD13	1:A:106:LEU:HB2	1.90	0.53
1:A:245:ASP:OD2	2:A:1000:B3P:N1	2.39	0.53
1:B:94:ALA:C	1:B:95:GLU:OE2	2.47	0.53
1:B:12:HIS:HE1	1:B:93:LEU:O	1.92	0.53
1:B:12:HIS:CD2	1:B:100:ALA:H	2.26	0.52
1:A:65:GLU:O	1:B:1:MSE:HE3	2.10	0.52
1:B:96:THR:CG2	1:B:97:LYS:H	2.22	0.52
1:A:12:HIS:HD2	1:A:100:ALA:H	1.53	0.52
1:B:214:THR:H	1:B:217:LYS:HE2	1.75	0.51
1:A:1:MSE:HE1	1:B:89[B]:MSE:SE	2.61	0.51
1:A:226:ILE:HG12	2:A:1000:B3P:H101	1.92	0.51
1:B:77:ARG:HG2	1:B:78:ILE:N	2.26	0.51
1:A:48:THR:CG2	3:A:1236:HOH:O	2.58	0.51
1:B:395:ILE:N	1:B:395:ILE:CD1	2.71	0.51
1:B:97:LYS:HB3	1:B:97:LYS:HZ2	1.72	0.51
1:B:79:THR:HA	1:B:104:ASN:O	2.12	0.50
1:B:154:GLU:OE1	1:B:154:GLU:CA	2.59	0.50
1:A:164:ASP:OD2	1:A:166:SER:CB	2.46	0.50

*Continued on next page...*

*Continued from previous page...*

Atom-1	Atom-2	Interatomic distance (Å)	Clash overlap (Å)
1:A:12:HIS:HE1	1:A:93:LEU:O	1.95	0.50
1:A:198:TYR:CD2	1:A:222:MSE:SE	3.15	0.50
1:A:438:PHE:HB2	1:A:442:ASP:HB2	1.93	0.50
1:B:141:THR:HG23	1:B:146:ILE:HG13	1.94	0.50
1:B:243:ASP:OD1	1:B:245:ASP:HB2	2.11	0.50
1:A:121:LYS:O	1:A:124:GLU:HG2	2.12	0.50
1:B:111:ASP:OD2	1:B:114:GLU:HG3	2.12	0.50
1:B:15:LEU:O	1:B:19:LEU:HG	2.11	0.50
1:A:107:LYS:O	1:A:118:LEU:HD11	2.11	0.49
1:B:38:ILE:HB	1:B:73:LEU:HB2	1.93	0.49
1:A:48:THR:HG22	3:A:1236:HOH:O	2.12	0.49
1:B:287:TYR:OH	1:B:288:LYS:HE3	2.12	0.49
1:A:218:PHE:O	1:A:221:GLN:HB3	2.12	0.49
1:A:237:LEU:HB3	1:A:239:LEU:HG	1.94	0.49
1:B:108:ARG:NH2	1:B:148:GLU:OE1	2.46	0.49
1:B:404:SER:HB2	3:B:467:HOH:O	2.12	0.49
1:B:6:ILE:HD12	1:B:62:LEU:O	2.13	0.48
1:B:94:ALA:HB3	1:B:95:GLU:OE2	2.13	0.48
1:A:440:GLY:O	1:A:441:GLU:CB	2.62	0.48
1:B:375:ASN:OD1	1:B:376:PRO:HD2	2.14	0.48
1:B:4:TYR:HB2	1:B:89[A]:MSE:CE	2.42	0.47
1:B:304:SER:O	1:B:308:LYS:HG3	2.14	0.47
1:B:24:ASN:HB3	1:B:27:ASP:HB2	1.97	0.47
1:A:306:GLN:HG2	1:A:407:TYR:CZ	2.50	0.47
1:A:33:GLN:HG3	1:A:164:ASP:O	2.15	0.47
1:B:59:THR:HB	1:B:362:ILE:HD13	1.96	0.46
1:A:215:HIS:HB3	1:A:269:THR:CG2	2.46	0.46
1:B:69:THR:HG23	1:B:81:LEU:O	2.16	0.46
1:A:123:ILE:HD12	1:A:156:VAL:HG21	1.97	0.46
1:B:349:GLU:N	1:B:350:PRO:CD	2.79	0.45
1:A:283:LEU:C	1:A:283:LEU:HD12	2.37	0.45
1:B:435:ILE:C	1:B:435:ILE:HD12	2.37	0.45
1:A:81:LEU:HD13	1:A:106:LEU:CB	2.46	0.45
1:A:180:GLU:HG2	1:A:290:TYR:CZ	2.52	0.45
1:B:299:LEU:HB3	1:B:302:PRO:HB3	1.98	0.44
1:A:96:THR:HB	3:A:1134:HOH:O	2.17	0.44
1:B:260:SER:HB3	1:B:272:ARG:NH2	2.33	0.44
1:A:142:GLN:HG2	1:A:143:GLY:N	2.33	0.44
1:A:144:LYS:HE3	1:A:144:LYS:HB2	1.66	0.44
1:A:218:PHE:O	1:A:222:MSE:HG2	2.18	0.44
1:A:441:GLU:O	1:A:442:ASP:C	2.56	0.44

*Continued on next page...*

*Continued from previous page...*

Atom-1	Atom-2	Interatomic distance (Å)	Clash overlap (Å)
1:B:356:LEU:HA	1:B:388:SER:O	2.18	0.44
1:A:69:THR:HB	1:A:82:THR:HG23	2.00	0.44
1:B:122:ILE:HD11	1:B:149:TRP:CH2	2.53	0.44
1:B:35:CYS:HA	1:B:132:LYS:HB2	2.00	0.44
1:A:119:PHE:CD1	1:A:149:TRP:HE3	2.36	0.43
1:B:190:VAL:HG12	1:B:285:PHE:CD1	2.53	0.43
1:A:1:MSE:HE3	1:B:4:TYR:CZ	2.53	0.43
1:A:198:TYR:HE2	1:A:222:MSE:SE	2.49	0.43
1:A:29:LYS:HE3	1:A:29:LYS:HB3	1.73	0.43
1:B:305:GLU:HA	1:B:305:GLU:OE1	2.18	0.43
1:A:214:THR:HA	1:A:273:ASN:HA	2.00	0.43
1:B:87:ALA:CB	1:B:107:LYS:HG2	2.49	0.43
1:B:321:PHE:O	1:B:422:PRO:HG3	2.18	0.43
1:A:317:GLN:O	1:A:320:LEU:HB3	2.18	0.42
1:B:129:THR:C	1:B:131:LYS:N	2.73	0.42
1:B:357:GLY:O	1:B:370:LEU:HD12	2.19	0.42
1:B:110:LYS:H	1:B:110:LYS:CD	2.30	0.42
1:A:46:ASP:C	1:A:48:THR:H	2.22	0.42
1:A:81:LEU:HD11	1:A:118:LEU:HD13	2.00	0.42
1:B:120:GLU:HA	1:B:123:ILE:HD12	2.00	0.42
1:A:202:GLU:HB3	1:A:218:PHE:CZ	2.54	0.42
1:B:123:ILE:HD11	1:B:152:ILE:HG22	2.01	0.42
1:B:432:GLN:HG3	3:B:456:HOH:O	2.19	0.42
1:A:281:CYS:O	1:A:295:GLY:HA2	2.20	0.42
1:A:67:PRO:O	1:A:69:THR:HG22	2.20	0.42
1:A:214:THR:H	1:A:217:LYS:HD2	1.85	0.41
1:A:7:ASP:OD1	1:A:7:ASP:C	2.59	0.41
1:A:94:ALA:HA	1:A:103:VAL:HB	2.03	0.41
1:A:234:THR:O	1:A:237:LEU:HB2	2.21	0.41
1:A:405:LYS:HE2	1:A:405:LYS:HB3	1.83	0.41
1:A:153:PHE:CE2	1:A:157:LYS:HG3	2.55	0.41
1:B:83:SER:OG	1:B:86:LYS:HD2	2.21	0.41
1:B:61:LEU:HD23	1:B:61:LEU:HA	1.86	0.41
1:A:1:MSE:HE2	3:A:1154:HOH:O	2.20	0.41
1:A:441:GLU:O	1:A:442:ASP:O	2.39	0.41
1:A:222:MSE:O	1:A:225:LEU:HB2	2.21	0.40
1:A:277:ASP:OD1	1:A:278:VAL:N	2.53	0.40
1:B:258:GLY:HA2	1:B:277:ASP:OD1	2.21	0.40
1:B:77:ARG:HD2	1:B:104:ASN:CB	2.50	0.40
1:B:405:LYS:N	1:B:405:LYS:HD2	2.36	0.40
1:B:4:TYR:HD1	1:B:64:TYR:CE2	2.39	0.40

*Continued on next page...*

*Continued from previous page...*

Atom-1	Atom-2	Interatomic distance (Å)	Clash overlap (Å)
1:B:58:HIS:HB3	1:B:64:TYR:O	2.21	0.40

There are no symmetry-related clashes.

## 5.3 Torsion angles [i](#)

### 5.3.1 Protein backbone [i](#)

In the following table, the Percentiles column shows the percent Ramachandran outliers of the chain as a percentile score with respect to all X-ray entries followed by that with respect to entries of similar resolution.

The Analysed column shows the number of residues for which the backbone conformation was analysed, and the total number of residues.

Mol	Chain	Analysed	Favoured	Allowed	Outliers	Percentiles	
1	A	443/444 (100%)	428 (97%)	14 (3%)	1 (0%)	47	39
1	B	439/444 (99%)	424 (97%)	13 (3%)	2 (0%)	29	18
All	All	882/888 (99%)	852 (97%)	27 (3%)	3 (0%)	41	31

All (3) Ramachandran outliers are listed below:

Mol	Chain	Res	Type
1	B	97	LYS
1	B	398	HIS
1	A	399	PRO

### 5.3.2 Protein sidechains [i](#)

In the following table, the Percentiles column shows the percent sidechain outliers of the chain as a percentile score with respect to all X-ray entries followed by that with respect to entries of similar resolution.

The Analysed column shows the number of residues for which the sidechain conformation was analysed, and the total number of residues.

Mol	Chain	Analysed	Rotameric	Outliers	Percentiles	
1	A	387/384 (101%)	368 (95%)	19 (5%)	25	17
1	B	387/384 (101%)	366 (95%)	21 (5%)	22	13

*Continued on next page...*

*Continued from previous page...*

Mol	Chain	Analysed	Rotameric	Outliers	Percentiles	
All	All	774/768 (101%)	734 (95%)	40 (5%)	25	14

All (40) residues with a non-rotameric sidechain are listed below:

Mol	Chain	Res	Type
1	A	26	GLU
1	A	48	THR
1	A	69	THR
1	A	82	THR
1	A	85	ASN
1	A	91	THR
1	A	127	ARG
1	A	141	THR
1	A	202	GLU
1	A	218	PHE
1	A	237	LEU
1	A	293	ASN
1	A	304	SER
1	A	318	LYS
1	A	319	LYS
1	A	365[A]	ARG
1	A	365[B]	ARG
1	A	395	ILE
1	A	401	ASN
1	B	52	GLN
1	B	92	LYS
1	B	95	GLU
1	B	97	LYS
1	B	122	ILE
1	B	142	GLN
1	B	151	SER
1	B	154	GLU
1	B	156	VAL
1	B	212	LYS
1	B	218	PHE
1	B	234	THR
1	B	235	LYS
1	B	336	LYS
1	B	386	ASN
1	B	395	ILE
1	B	405	LYS
1	B	421[A]	ASP

*Continued on next page...*

*Continued from previous page...*

Mol	Chain	Res	Type
1	B	421[B]	ASP
1	B	430	LYS
1	B	432	GLN

Some sidechains can be flipped to improve hydrogen bonding and reduce clashes. All (18) such sidechains are listed below:

Mol	Chain	Res	Type
1	A	12	HIS
1	A	24	ASN
1	A	52	GLN
1	A	85	ASN
1	A	209	GLN
1	A	293	ASN
1	A	386	ASN
1	A	401	ASN
1	A	432	GLN
1	B	12	HIS
1	B	76	HIS
1	B	104	ASN
1	B	142	GLN
1	B	147	ASN
1	B	293	ASN
1	B	307	GLN
1	B	386	ASN
1	B	432	GLN

### 5.3.3 RNA [i](#)

There are no RNA molecules in this entry.

### 5.4 Non-standard residues in protein, DNA, RNA chains [i](#)

There are no non-standard protein/DNA/RNA residues in this entry.

### 5.5 Carbohydrates [i](#)

There are no carbohydrates in this entry.

## 5.6 Ligand geometry

1 ligand is modelled in this entry.

In the following table, the Counts columns list the number of bonds (or angles) for which Mogul statistics could be retrieved, the number of bonds (or angles) that are observed in the model and the number of bonds (or angles) that are defined in the Chemical Component Dictionary. The Link column lists molecule types, if any, to which the group is linked. The Z score for a bond length (or angle) is the number of standard deviations the observed value is removed from the expected value. A bond length (or angle) with  $|Z| > 2$  is considered an outlier worth inspection. RMSZ is the root-mean-square of all Z scores of the bond lengths (or angles).

Mol	Type	Chain	Res	Link	Bond lengths			Bond angles		
					Counts	RMSZ	# Z  > 2	Counts	RMSZ	# Z  > 2
2	B3P	A	1000	-	18,18,18	0.79	1 (5%)	21,23,23	1.78	4 (19%)

In the following table, the Chirals column lists the number of chiral outliers, the number of chiral centers analysed, the number of these observed in the model and the number defined in the Chemical Component Dictionary. Similar counts are reported in the Torsion and Rings columns. '-' means no outliers of that kind were identified.

Mol	Type	Chain	Res	Link	Chirals	Torsions	Rings
2	B3P	A	1000	-	-	10/28/28/28	-

All (1) bond length outliers are listed below:

Mol	Chain	Res	Type	Atoms	Z	Observed(Å)	Ideal(Å)
2	A	1000	B3P	C6-C4	-2.33	1.50	1.53

All (4) bond angle outliers are listed below:

Mol	Chain	Res	Type	Atoms	Z	Observed(°)	Ideal(°)
2	A	1000	B3P	C2-N2-C8	4.52	122.50	116.08
2	A	1000	B3P	C3-N1-C4	4.08	121.86	116.08
2	A	1000	B3P	O5-C6-C4	-3.65	104.24	111.63
2	A	1000	B3P	C6-C4-C5	-2.60	104.56	110.04

There are no chirality outliers.

All (10) torsion outliers are listed below:

Mol	Chain	Res	Type	Atoms
2	A	1000	B3P	C6-C4-N1-C3
2	A	1000	B3P	O3-C11-C8-N2
2	A	1000	B3P	O3-C11-C8-C10

*Continued on next page...*

Continued from previous page...

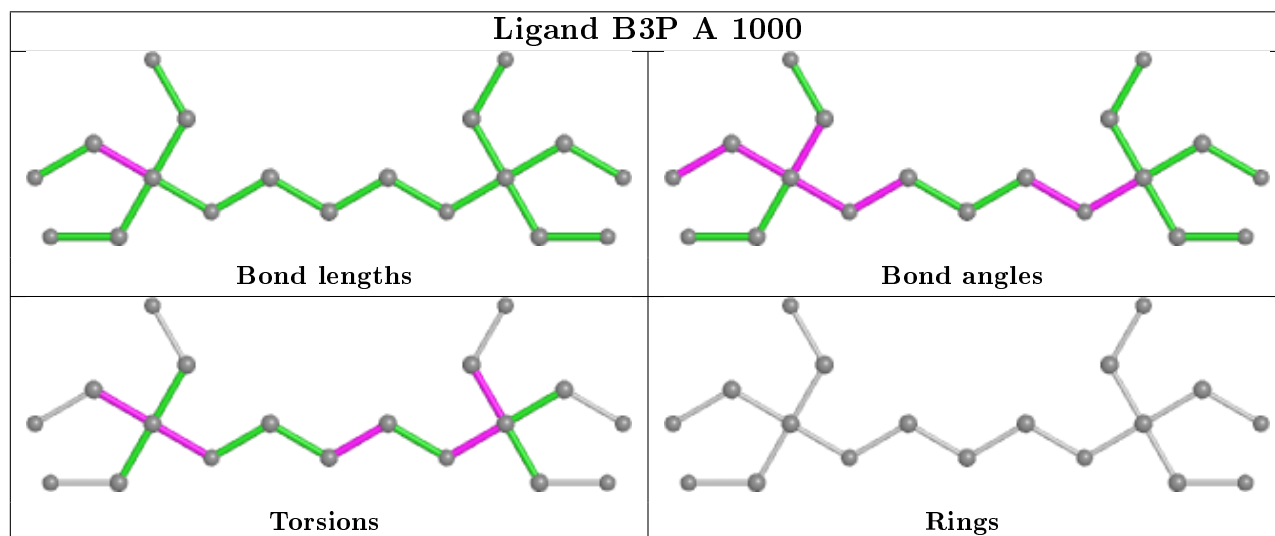
Mol	Chain	Res	Type	Atoms
2	A	1000	B3P	O3-C11-C8-C9
2	A	1000	B3P	C5-C4-N1-C3
2	A	1000	B3P	C7-C4-C6-O5
2	A	1000	B3P	C5-C4-C6-O5
2	A	1000	B3P	C3-C1-C2-N2
2	A	1000	B3P	C7-C4-N1-C3
2	A	1000	B3P	C9-C8-N2-C2

There are no ring outliers.

1 monomer is involved in 2 short contacts:

Mol	Chain	Res	Type	Clashes	Symm-Clashes
2	A	1000	B3P	2	0

The following is a two-dimensional graphical depiction of Mogul quality analysis of bond lengths, bond angles, torsion angles, and ring geometry for all instances of the Ligand of Interest. In addition, ligands with molecular weight > 250 and outliers as shown on the validation Tables will also be included. For torsion angles, if less than 5% of the Mogul distribution of torsion angles is within 10 degrees of the torsion angle in question, then that torsion angle is considered an outlier. Any bond that is central to one or more torsion angles identified as an outlier by Mogul will be highlighted in the graph. For rings, the root-mean-square deviation (RMSD) between the ring in question and similar rings identified by Mogul is calculated over all ring torsion angles. If the average RMSD is greater than 60 degrees and the minimal RMSD between the ring in question and any Mogul-identified rings is also greater than 60 degrees, then that ring is considered an outlier. The outliers are highlighted in purple. The color gray indicates Mogul did not find sufficient equivalents in the CSD to analyse the geometry.





## 5.7 Other polymers

There are no such residues in this entry.

## 5.8 Polymer linkage issues

There are no chain breaks in this entry.

## 6 Fit of model and data

### 6.1 Protein, DNA and RNA chains

In the following table, the column labelled ‘#RSRZ> 2’ contains the number (and percentage) of RSRZ outliers, followed by percent RSRZ outliers for the chain as percentile scores relative to all X-ray entries and entries of similar resolution. The OWAB column contains the minimum, median, 95<sup>th</sup> percentile and maximum values of the occupancy-weighted average B-factor per residue. The column labelled ‘Q< 0.9’ lists the number of (and percentage) of residues with an average occupancy less than 0.9.

Mol	Chain	Analysed	<RSRZ>	#RSRZ>2	OWAB(Å <sup>2</sup> )	Q<0.9
1	A	439/444 (98%)	0.22	9 (2%) 63 67	21, 27, 35, 47	0
1	B	435/444 (97%)	0.34	14 (3%) 47 52	21, 27, 35, 41	0
All	All	874/888 (98%)	0.28	23 (2%) 56 60	21, 27, 35, 47	0

All (23) RSRZ outliers are listed below:

Mol	Chain	Res	Type	RSRZ
1	B	403	GLN	5.2
1	A	402	SER	4.7
1	B	25	GLU	4.6
1	A	398	HIS	4.4
1	A	0	ALA	4.0
1	A	401	ASN	3.1
1	B	96	THR	3.0
1	B	106	LEU	3.0
1	B	118	LEU	3.0
1	B	0	ALA	2.8
1	B	399	PRO	2.8
1	A	-1	GLY	2.8
1	B	90	LEU	2.7
1	A	442	ASP	2.7
1	B	156	VAL	2.6
1	A	403	GLN	2.5
1	B	126	ILE	2.4
1	A	275	HIS	2.1
1	A	399	PRO	2.1
1	B	2	ALA	2.1
1	B	404	SER	2.1
1	B	122	ILE	2.0
1	B	398	HIS	2.0

## 6.2 Non-standard residues in protein, DNA, RNA chains [i](#)

There are no non-standard protein/DNA/RNA residues in this entry.

## 6.3 Carbohydrates [i](#)

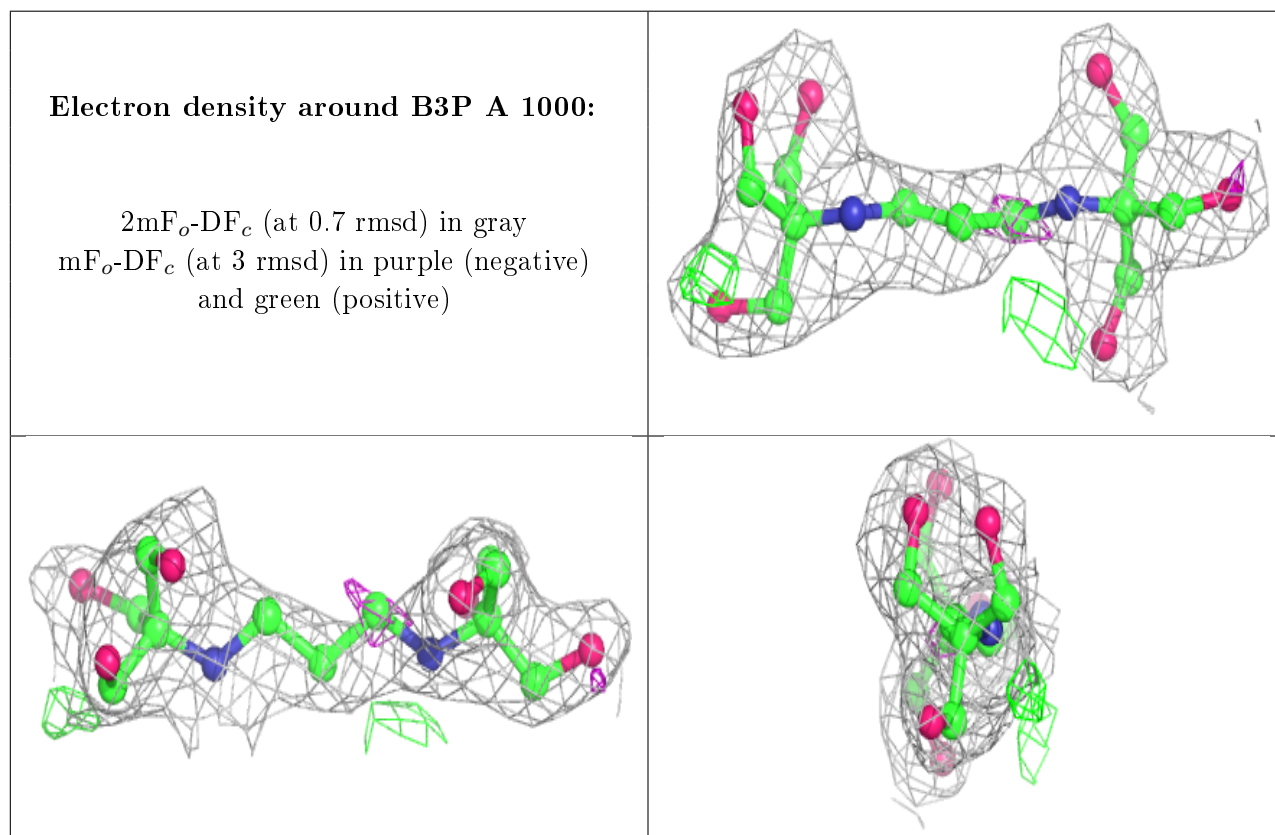
There are no carbohydrates in this entry.

## 6.4 Ligands [i](#)

In the following table, the Atoms column lists the number of modelled atoms in the group and the number defined in the chemical component dictionary. The B-factors column lists the minimum, median, 95<sup>th</sup> percentile and maximum values of B factors of atoms in the group. The column labelled 'Q< 0.9' lists the number of atoms with occupancy less than 0.9.

Mol	Type	Chain	Res	Atoms	RSCC	RSR	B-factors(Å <sup>2</sup> )	Q<0.9
2	B3P	A	1000	19/19	0.89	0.18	40,46,49,49	0

The following is a graphical depiction of the model fit to experimental electron density of all instances of the Ligand of Interest. In addition, ligands with molecular weight > 250 and outliers as shown on the geometry validation Tables will also be included. Each fit is shown from different orientation to approximate a three-dimensional view.



## 6.5 Other polymers

There are no such residues in this entry.