



Full wwPDB X-ray Structure Validation Report ⓘ

Aug 23, 2023 – 01:45 PM EDT

PDB ID : 3C72
Title : Engineered RabGGTase in complex with a peptidomimetic inhibitor
Authors : Guo, Z.; Wu, Y.W.; Tan, K.T.; Bon, R.S.; Guiu-Rozas, E.; Delon, C.; Nguyen, U.T.; Wetzel, S.; Arndt, S.; Goody, R.S.; Blankenfeldt, W.; Alexandrov, K.; Waldmann, H.
Deposited on : 2008-02-06
Resolution : 2.30 Å(reported)

This is a Full wwPDB X-ray Structure Validation Report for a publicly released PDB entry.

We welcome your comments at validation@mail.wwpdb.org

A user guide is available at

<https://www.wwpdb.org/validation/2017/XrayValidationReportHelp>

with specific help available everywhere you see the ⓘ symbol.

The types of validation reports are described at

<http://www.wwpdb.org/validation/2017/FAQs#types>.

The following versions of software and data (see [references ⓘ](#)) were used in the production of this report:

MolProbity : 4.02b-467
Mogul : 1.8.5 (274361), CSD as541be (2020)
Xtriage (Phenix) : 1.13
EDS : 2.35
buster-report : 1.1.7 (2018)
Percentile statistics : 20191225.v01 (using entries in the PDB archive December 25th 2019)
Refmac : 5.8.0158
CCP4 : 7.0.044 (Gargrove)
Ideal geometry (proteins) : Engh & Huber (2001)
Ideal geometry (DNA, RNA) : Parkinson et al. (1996)
Validation Pipeline (wwPDB-VP) : 2.35

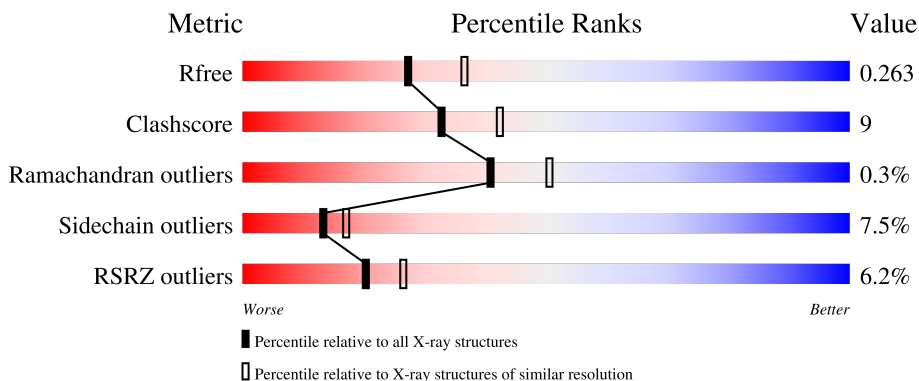
1 Overall quality at a glance

The following experimental techniques were used to determine the structure:

X-RAY DIFFRACTION

The reported resolution of this entry is 2.30 Å.

Percentile scores (ranging between 0-100) for global validation metrics of the entry are shown in the following graphic. The table shows the number of entries on which the scores are based.



Metric	Whole archive (#Entries)	Similar resolution (#Entries, resolution range(Å))
R_{free}	130704	5042 (2.30-2.30)
Clashscore	141614	5643 (2.30-2.30)
Ramachandran outliers	138981	5575 (2.30-2.30)
Sidechain outliers	138945	5575 (2.30-2.30)
RSRZ outliers	127900	4938 (2.30-2.30)

The table below summarises the geometric issues observed across the polymeric chains and their fit to the electron density. The red, orange, yellow and green segments of the lower bar indicate the fraction of residues that contain outliers for ≥ 3 , 2, 1 and 0 types of geometric quality criteria respectively. A grey segment represents the fraction of residues that are not modelled. The numeric value for each fraction is indicated below the corresponding segment, with a dot representing fractions $\leq 5\%$. The upper red bar (where present) indicates the fraction of residues that have poor fit to the electron density. The numeric value is given above the bar.

Mol	Chain	Length	Quality of chain
1	A	334	
2	B	331	

2 Entry composition

There are 6 unique types of molecules in this entry. The entry contains 5255 atoms, of which 0 are hydrogens and 0 are deuteriums.

In the tables below, the ZeroOcc column contains the number of atoms modelled with zero occupancy, the AltConf column contains the number of residues with at least one atom in alternate conformation and the Trace column contains the number of residues modelled with at most 2 atoms.

- Molecule 1 is a protein called Geranylgeranyl transferase type-2 subunit alpha.

Mol	Chain	Residues	Atoms					ZeroOcc	AltConf	Trace
			Total	C	N	O	S			
1	A	306	2505	1598	430	465	12	0	3	0

There are 9 discrepancies between the modelled and reference sequences:

Chain	Residue	Modelled	Actual	Comment	Reference
A	-3	GLY	-	expression tag	UNP Q08602
A	-2	HIS	-	expression tag	UNP Q08602
A	-1	GLY	-	expression tag	UNP Q08602
A	0	HIS	-	expression tag	UNP Q08602
A	237	GLY	-	linker	UNP Q08602
A	238	ALA	-	linker	UNP Q08602
A	239	GLY	-	linker	UNP Q08602
A	240	SER	-	linker	UNP Q08602
A	241	GLY	-	linker	UNP Q08602

- Molecule 2 is a protein called Geranylgeranyl transferase type-2 subunit beta.

Mol	Chain	Residues	Atoms					ZeroOcc	AltConf	Trace
			Total	C	N	O	S			
2	B	324	2512	1606	416	470	20	0	1	0

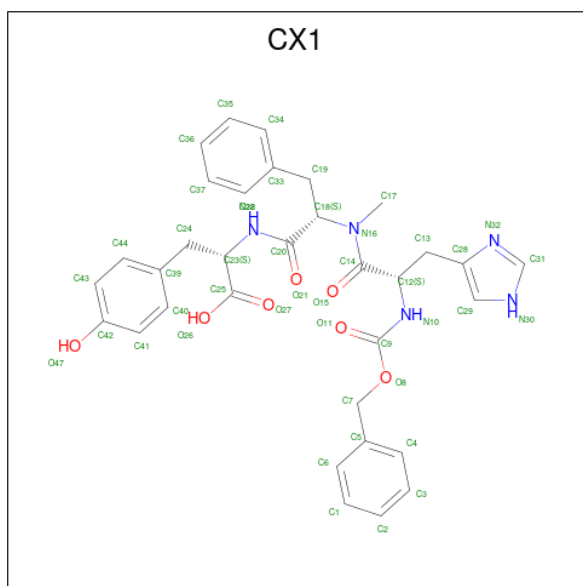
- Molecule 3 is ZINC ION (three-letter code: ZN) (formula: Zn).

Mol	Chain	Residues	Atoms		ZeroOcc	AltConf
3	B	1	Total	Zn	0	0
			1	1		

- Molecule 4 is CALCIUM ION (three-letter code: CA) (formula: Ca).

Mol	Chain	Residues	Atoms	ZeroOcc	AltConf
4	B	1	Total Ca 1 1	0	0

- Molecule 5 is N-[(benzyloxy)carbonyl]-L-histidyl-N-methyl-L-phenylalanyl-L-tyrosine (three-letter code: CX1) (formula: C₃₃H₃₅N₅O₇).



Mol	Chain	Residues	Atoms	ZeroOcc	AltConf
5	B	1	Total C N O 45 33 5 7	0	0

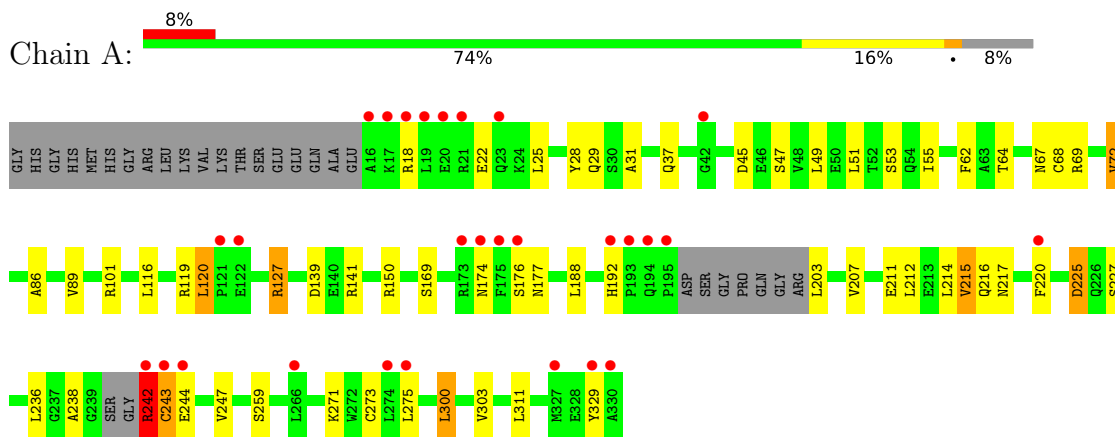
- Molecule 6 is water.

Mol	Chain	Residues	Atoms	ZeroOcc	AltConf
6	A	78	Total O 78 78	0	0
6	B	113	Total O 113 113	0	0

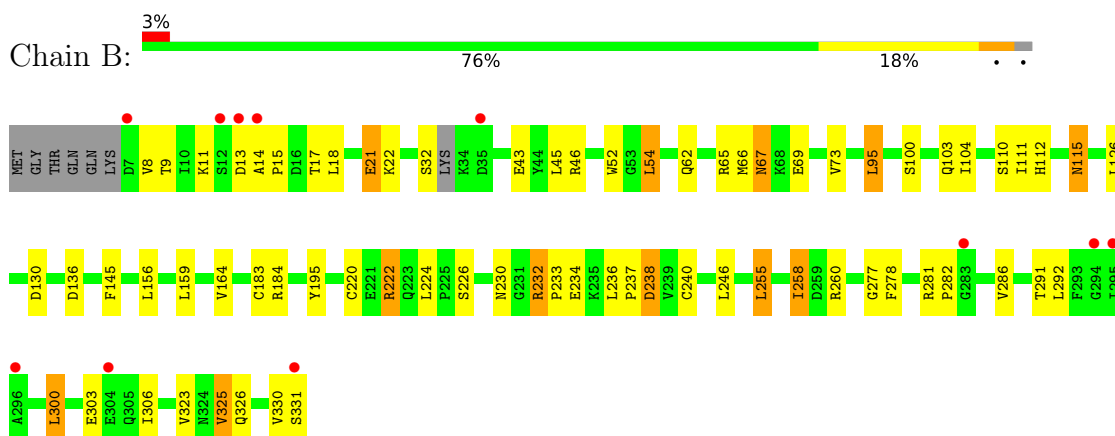
3 Residue-property plots [i](#)

These plots are drawn for all protein, RNA, DNA and oligosaccharide chains in the entry. The first graphic for a chain summarises the proportions of the various outlier classes displayed in the second graphic. The second graphic shows the sequence view annotated by issues in geometry and electron density. Residues are color-coded according to the number of geometric quality criteria for which they contain at least one outlier: green = 0, yellow = 1, orange = 2 and red = 3 or more. A red dot above a residue indicates a poor fit to the electron density ($RSRZ > 2$). Stretches of 2 or more consecutive residues without any outlier are shown as a green connector. Residues present in the sample, but not in the model, are shown in grey.

- Molecule 1: Geranylgeranyl transferase type-2 subunit alpha



- Molecule 2: Geranylgeranyl transferase type-2 subunit beta



4 Data and refinement statistics

Property	Value	Source
Space group	P 21 21 21	Depositor
Cell constants a, b, c, α , β , γ	66.19Å 91.67Å 115.44Å 90.00° 90.00° 90.00°	Depositor
Resolution (Å)	19.88 – 2.30 19.88 – 2.30	Depositor EDS
% Data completeness (in resolution range)	100.0 (19.88-2.30) 99.9 (19.88-2.30)	Depositor EDS
R_{merge}	(Not available)	Depositor
R_{sym}	5.20	Depositor
$\langle I/\sigma(I) \rangle$ ¹	4.04 (at 2.30Å)	Xtrriage
Refinement program	REFMAC 5.2.0019	Depositor
R, R_{free}	0.189 , 0.256 0.194 , 0.263	Depositor DCC
R_{free} test set	1587 reflections (4.99%)	wwPDB-VP
Wilson B-factor (Å ²)	41.8	Xtrriage
Anisotropy	0.145	Xtrriage
Bulk solvent k_{sol} (e/Å ³), B_{sol} (Å ²)	0.30 , 43.5	EDS
L-test for twinning ²	$\langle L \rangle = 0.48$, $\langle L^2 \rangle = 0.32$	Xtrriage
Estimated twinning fraction	No twinning to report.	Xtrriage
F_o, F_c correlation	0.95	EDS
Total number of atoms	5255	wwPDB-VP
Average B, all atoms (Å ²)	38.0	wwPDB-VP

Xtrriage's analysis on translational NCS is as follows: *The largest off-origin peak in the Patterson function is 4.09% of the height of the origin peak. No significant pseudotranslation is detected.*

¹Intensities estimated from amplitudes.

²Theoretical values of $\langle |L| \rangle$, $\langle L^2 \rangle$ for acentric reflections are 0.5, 0.333 respectively for untwinned datasets, and 0.375, 0.2 for perfectly twinned datasets.

5 Model quality [i](#)

5.1 Standard geometry [i](#)

Bond lengths and bond angles in the following residue types are not validated in this section: CX1, CA, ZN

The Z score for a bond length (or angle) is the number of standard deviations the observed value is removed from the expected value. A bond length (or angle) with $|Z| > 5$ is considered an outlier worth inspection. RMSZ is the root-mean-square of all Z scores of the bond lengths (or angles).

Mol	Chain	Bond lengths		Bond angles	
		RMSZ	# Z >5	RMSZ	# Z >5
1	A	0.86	1/2570 (0.0%)	0.82	5/3488 (0.1%)
2	B	0.95	2/2574 (0.1%)	0.87	5/3494 (0.1%)
All	All	0.91	3/5144 (0.1%)	0.85	10/6982 (0.1%)

Chiral center outliers are detected by calculating the chiral volume of a chiral center and verifying if the center is modelled as a planar moiety or with the opposite hand. A planarity outlier is detected by checking planarity of atoms in a peptide group, atoms in a mainchain group or atoms of a sidechain that are expected to be planar.

Mol	Chain	#Chirality outliers	#Planarity outliers
1	A	0	2

All (3) bond length outliers are listed below:

Mol	Chain	Res	Type	Atoms	Z	Observed(Å)	Ideal(Å)
1	A	303	VAL	CB-CG2	-7.37	1.37	1.52
2	B	43	GLU	CG-CD	5.50	1.60	1.51
2	B	183	CYS	CB-SG	-5.03	1.73	1.81

All (10) bond angle outliers are listed below:

Mol	Chain	Res	Type	Atoms	Z	Observed(°)	Ideal(°)
2	B	232	ARG	NE-CZ-NH1	6.09	123.34	120.30
1	A	150	ARG	NE-CZ-NH2	5.79	123.19	120.30
2	B	136	ASP	CB-CG-OD1	5.70	123.43	118.30
1	A	69	ARG	NE-CZ-NH2	-5.65	117.47	120.30
2	B	232	ARG	NE-CZ-NH2	-5.58	117.51	120.30
1	A	101	ARG	NE-CZ-NH2	-5.52	117.54	120.30
1	A	127	ARG	NE-CZ-NH2	-5.50	117.55	120.30
2	B	130	ASP	CB-CG-OD1	5.45	123.21	118.30

Continued on next page...

Continued from previous page...

Mol	Chain	Res	Type	Atoms	Z	Observed(°)	Ideal(°)
2	B	184	ARG	CG-CD-NE	-5.36	100.54	111.80
1	A	139	ASP	CB-CG-OD1	5.07	122.86	118.30

There are no chirality outliers.

All (2) planarity outliers are listed below:

Mol	Chain	Res	Type	Group
1	A	242	ARG	Peptide
1	A	243	CYS	Peptide

5.2 Too-close contacts [\(i\)](#)

In the following table, the Non-H and H(model) columns list the number of non-hydrogen atoms and hydrogen atoms in the chain respectively. The H(added) column lists the number of hydrogen atoms added and optimized by MolProbity. The Clashes column lists the number of clashes within the asymmetric unit, whereas Symm-Clashes lists symmetry-related clashes.

Mol	Chain	Non-H	H(model)	H(added)	Clashes	Symm-Clashes
1	A	2505	0	2431	29	0
2	B	2512	0	2434	55	0
3	B	1	0	0	0	0
4	B	1	0	0	0	0
5	B	45	0	34	5	0
6	A	78	0	0	2	0
6	B	113	0	0	3	0
All	All	5255	0	4899	87	0

The all-atom clashscore is defined as the number of clashes found per 1000 atoms (including hydrogen atoms). The all-atom clashscore for this structure is 9.

All (87) close contacts within the same asymmetric unit are listed below, sorted by their clash magnitude.

Atom-1	Atom-2	Interatomic distance (Å)	Clash overlap (Å)
2:B:323:VAL:HG23	2:B:325:VAL:HG13	1.57	0.86
2:B:112[A]:HIS:ND1	6:B:447:HOH:O	2.26	0.68
1:A:188:LEU:HD11	1:A:211:GLU:CG	2.24	0.68
2:B:195:TYR:HE2	5:B:334:CX1:H3	1.58	0.67
1:A:242:ARG:N	1:A:243:CYS:HA	2.10	0.66
1:A:188:LEU:HD11	1:A:211:GLU:HG3	1.77	0.66

Continued on next page...

Continued from previous page...

Atom-1	Atom-2	Interatomic distance (Å)	Clash overlap (Å)
2:B:195:TYR:CE2	5:B:334:CX1:H3	2.31	0.66
1:A:116:LEU:O	1:A:120:LEU:HD13	1.96	0.65
1:A:25:LEU:O	1:A:29:GLN:HG3	1.98	0.64
1:A:192:HIS:CE1	1:A:207:VAL:HG21	2.32	0.64
1:A:174:ASN:OD1	6:A:408:HOH:O	2.16	0.63
1:A:203:LEU:HD13	1:A:238:ALA:HB1	1.80	0.62
2:B:14:ALA:HB1	2:B:15:PRO:HD2	1.82	0.62
2:B:255:LEU:HD12	2:B:255:LEU:O	2.00	0.61
1:A:28:TYR:CE1	1:A:55:ILE:HG23	2.35	0.61
5:B:334:CX1:H31	6:B:359:HOH:O	2.01	0.61
2:B:8:VAL:HG22	2:B:9:THR:N	2.17	0.60
1:A:51:LEU:O	1:A:55:ILE:HD12	2.02	0.60
1:A:188:LEU:CD1	1:A:211:GLU:HG3	2.32	0.59
2:B:111:ILE:CD1	2:B:112[B]:HIS:CD2	2.86	0.59
2:B:111:ILE:HD11	2:B:112[B]:HIS:CD2	2.40	0.57
1:A:225:ASP:O	1:A:225:ASP:OD1	2.24	0.56
2:B:246:LEU:HD11	2:B:255:LEU:CD1	2.36	0.56
2:B:325:VAL:HG22	2:B:325:VAL:O	2.06	0.55
1:A:45:ASP:OD2	1:A:47:SER:OG	2.25	0.55
1:A:300:LEU:HD13	1:A:311:LEU:HD22	1.89	0.55
2:B:45:LEU:HD12	2:B:45:LEU:C	2.28	0.54
2:B:21:GLU:HG2	2:B:22:LYS:H	1.72	0.54
1:A:49:LEU:HD21	1:A:72:VAL:HG22	1.90	0.54
1:A:225:ASP:O	1:A:225:ASP:CG	2.46	0.53
2:B:277:GLY:HA3	2:B:286:VAL:HG21	1.90	0.53
2:B:277:GLY:C	2:B:286:VAL:CG2	2.77	0.53
1:A:300:LEU:HD13	1:A:311:LEU:CD2	2.39	0.52
2:B:222:ARG:HD3	2:B:230:ASN:OD1	2.10	0.52
2:B:246:LEU:HD11	2:B:255:LEU:HD11	1.91	0.51
2:B:95:LEU:HD23	2:B:145:PHE:HB3	1.93	0.51
2:B:246:LEU:CD1	2:B:255:LEU:HD13	2.40	0.51
1:A:31:ALA:HB1	1:A:55:ILE:HD11	1.92	0.50
1:A:220:PHE:CZ	1:A:259:SER:HB3	2.47	0.49
2:B:62:GLN:HB3	2:B:65:ARG:HD3	1.94	0.49
5:B:334:CX1:C43	5:B:334:CX1:H13	2.42	0.49
2:B:8:VAL:CG2	2:B:9:THR:N	2.76	0.49
2:B:323:VAL:HG23	2:B:325:VAL:CG1	2.35	0.49
2:B:238:ASP:OD1	2:B:238:ASP:C	2.51	0.49
2:B:258:ILE:HG22	2:B:260:ARG:HG3	1.94	0.48
2:B:224:LEU:CD1	2:B:237:PRO:HD3	2.42	0.48
2:B:164:VAL:HG23	6:B:410:HOH:O	2.12	0.47

Continued on next page...

Continued from previous page...

Atom-1	Atom-2	Interatomic distance (Å)	Clash overlap (Å)
2:B:69:GLU:O	2:B:73:VAL:HG23	2.14	0.47
2:B:111:ILE:HD12	2:B:112[B]:HIS:CD2	2.49	0.47
2:B:232:ARG:HB2	2:B:233:PRO:HD2	1.96	0.47
1:A:215:VAL:CG1	1:A:216:GLN:N	2.77	0.47
2:B:54:LEU:HD12	2:B:66:MET:HG3	1.96	0.46
2:B:18:LEU:HD22	2:B:303:GLU:HG2	1.97	0.46
1:A:68:CYS:O	1:A:72:VAL:HG13	2.15	0.46
1:A:177:ASN:ND2	6:A:408:HOH:O	2.46	0.46
1:A:214:LEU:O	1:A:217:ASN:HB2	2.16	0.46
2:B:220:CYS:HA	2:B:258:ILE:HD11	1.97	0.45
2:B:277:GLY:CA	2:B:286:VAL:HG21	2.47	0.45
2:B:100:SER:HA	2:B:103:GLN:HE21	1.82	0.44
2:B:111:ILE:HD12	2:B:112[B]:HIS:CG	2.52	0.44
2:B:8:VAL:CG2	2:B:226:SER:HB3	2.47	0.44
1:A:18:ARG:NE	1:A:22:GLU:HG3	2.33	0.43
2:B:220:CYS:HA	2:B:258:ILE:CD1	2.48	0.43
2:B:303:GLU:HB3	2:B:306:ILE:HD12	2.00	0.43
2:B:278:PHE:C	2:B:286:VAL:HG23	2.39	0.43
2:B:278:PHE:HB2	2:B:291:THR:HA	2.01	0.43
2:B:246:LEU:HD12	2:B:255:LEU:HD13	2.00	0.43
1:A:64:THR:O	1:A:67:ASN:HB2	2.19	0.43
2:B:52:TRP:HA	2:B:292:LEU:HD22	2.01	0.43
2:B:95:LEU:HD13	2:B:126:LEU:CD1	2.49	0.43
2:B:232:ARG:HB2	2:B:233:PRO:CD	2.49	0.42
2:B:115:ASN:HD22	2:B:115:ASN:C	2.23	0.42
2:B:325:VAL:O	2:B:326:GLN:HG3	2.20	0.42
1:A:212:LEU:O	1:A:215:VAL:HG12	2.20	0.42
2:B:277:GLY:C	2:B:286:VAL:HG21	2.40	0.42
2:B:281:ARG:HB2	2:B:282:PRO:CD	2.50	0.42
1:A:86:ALA:O	1:A:89:VAL:HG22	2.20	0.41
2:B:300:LEU:HD23	2:B:300:LEU:HA	1.90	0.41
5:B:334:CX1:H12	5:B:334:CX1:H17	1.40	0.41
2:B:330:VAL:HG12	2:B:331:SER:N	2.36	0.41
2:B:54:LEU:HD23	2:B:104:ILE:HG23	2.01	0.41
1:A:141:ARG:HD3	1:A:176:SER:OG	2.21	0.40
2:B:246:LEU:CD1	2:B:255:LEU:CD1	2.98	0.40
2:B:45:LEU:HD12	2:B:45:LEU:O	2.20	0.40
2:B:67:ASN:C	2:B:67:ASN:HD22	2.25	0.40
1:A:49:LEU:HG	1:A:72:VAL:HG21	2.03	0.40
2:B:278:PHE:N	2:B:286:VAL:CG2	2.84	0.40

There are no symmetry-related clashes.

5.3 Torsion angles [i](#)

5.3.1 Protein backbone [i](#)

In the following table, the Percentiles column shows the percent Ramachandran outliers of the chain as a percentile score with respect to all X-ray entries followed by that with respect to entries of similar resolution.

The Analysed column shows the number of residues for which the backbone conformation was analysed, and the total number of residues.

Mol	Chain	Analysed	Favoured	Allowed	Outliers	Percentiles	
1	A	303/334 (91%)	291 (96%)	11 (4%)	1 (0%)	41	50
2	B	321/331 (97%)	305 (95%)	15 (5%)	1 (0%)	41	50
All	All	624/665 (94%)	596 (96%)	26 (4%)	2 (0%)	41	50

All (2) Ramachandran outliers are listed below:

Mol	Chain	Res	Type
2	B	21	GLU
1	A	329	TYR

5.3.2 Protein sidechains [i](#)

In the following table, the Percentiles column shows the percent sidechain outliers of the chain as a percentile score with respect to all X-ray entries followed by that with respect to entries of similar resolution.

The Analysed column shows the number of residues for which the sidechain conformation was analysed, and the total number of residues.

Mol	Chain	Analysed	Rotameric	Outliers	Percentiles	
1	A	268/294 (91%)	249 (93%)	19 (7%)	14	19
2	B	272/284 (96%)	251 (92%)	21 (8%)	13	16
All	All	540/578 (93%)	500 (93%)	40 (7%)	13	17

All (40) residues with a non-rotameric sidechain are listed below:

Mol	Chain	Res	Type
1	A	37	GLN
1	A	53	SER
1	A	62	PHE
1	A	72	VAL

Continued on next page...

Continued from previous page...

Mol	Chain	Res	Type
1	A	119	ARG
1	A	120	LEU
1	A	127	ARG
1	A	169	SER
1	A	215	VAL
1	A	225	ASP
1	A	227	SER
1	A	236	LEU
1	A	242	ARG
1	A	244	GLU
1	A	247	VAL
1	A	271	LYS
1	A	273	CYS
1	A	275	LEU
1	A	300	LEU
2	B	11	LYS
2	B	13	ASP
2	B	17	THR
2	B	32	SER
2	B	46	ARG
2	B	54	LEU
2	B	67	ASN
2	B	95	LEU
2	B	110	SER
2	B	115	ASN
2	B	156	LEU
2	B	159	LEU
2	B	222	ARG
2	B	234	GLU
2	B	236	LEU
2	B	238	ASP
2	B	240	CYS
2	B	255	LEU
2	B	258	ILE
2	B	300	LEU
2	B	325	VAL

Sometimes sidechains can be flipped to improve hydrogen bonding and reduce clashes. All (8) such sidechains are listed below:

Mol	Chain	Res	Type
1	A	54	GLN
1	A	192	HIS

Continued on next page...

Continued from previous page...

Mol	Chain	Res	Type
1	A	264	GLN
2	B	67	ASN
2	B	91	HIS
2	B	103	GLN
2	B	115	ASN
2	B	193	GLN

5.3.3 RNA [i](#)

There are no RNA molecules in this entry.

5.4 Non-standard residues in protein, DNA, RNA chains [i](#)

There are no non-standard protein/DNA/RNA residues in this entry.

5.5 Carbohydrates [i](#)

There are no monosaccharides in this entry.

5.6 Ligand geometry [i](#)

Of 3 ligands modelled in this entry, 2 are monoatomic - leaving 1 for Mogul analysis.

In the following table, the Counts columns list the number of bonds (or angles) for which Mogul statistics could be retrieved, the number of bonds (or angles) that are observed in the model and the number of bonds (or angles) that are defined in the Chemical Component Dictionary. The Link column lists molecule types, if any, to which the group is linked. The Z score for a bond length (or angle) is the number of standard deviations the observed value is removed from the expected value. A bond length (or angle) with $|Z| > 2$ is considered an outlier worth inspection. RMSZ is the root-mean-square of all Z scores of the bond lengths (or angles).

Mol	Type	Chain	Res	Link	Bond lengths			Bond angles		
					Counts	RMSZ	# Z > 2	Counts	RMSZ	# Z > 2
5	CX1	B	334	-	44,48,48	1.26	2 (4%)	58,64,64	1.26	4 (6%)

In the following table, the Chirals column lists the number of chiral outliers, the number of chiral centers analysed, the number of these observed in the model and the number defined in the Chemical Component Dictionary. Similar counts are reported in the Torsion and Rings columns. '-' means no outliers of that kind were identified.

Mol	Type	Chain	Res	Link	Chirals	Torsions	Rings
5	CX1	B	334	-	-	6/45/45/45	0/4/4/4

All (2) bond length outliers are listed below:

Mol	Chain	Res	Type	Atoms	Z	Observed(Å)	Ideal(Å)
5	B	334	CX1	C7-C5	-5.21	1.38	1.50
5	B	334	CX1	C19-C33	2.56	1.57	1.51

All (4) bond angle outliers are listed below:

Mol	Chain	Res	Type	Atoms	Z	Observed(°)	Ideal(°)
5	B	334	CX1	C7-O8-C9	4.31	125.56	115.93
5	B	334	CX1	O8-C9-N10	4.21	119.05	110.50
5	B	334	CX1	C17-N16-C18	3.19	123.43	117.75
5	B	334	CX1	O8-C9-O11	-3.05	118.40	124.25

There are no chirality outliers.

All (6) torsion outliers are listed below:

Mol	Chain	Res	Type	Atoms
5	B	334	CX1	N10-C9-O8-C7
5	B	334	CX1	O11-C9-O8-C7
5	B	334	CX1	N22-C23-C24-C39
5	B	334	CX1	C25-C23-C24-C39
5	B	334	CX1	C18-C19-C33-C38
5	B	334	CX1	C18-C19-C33-C34

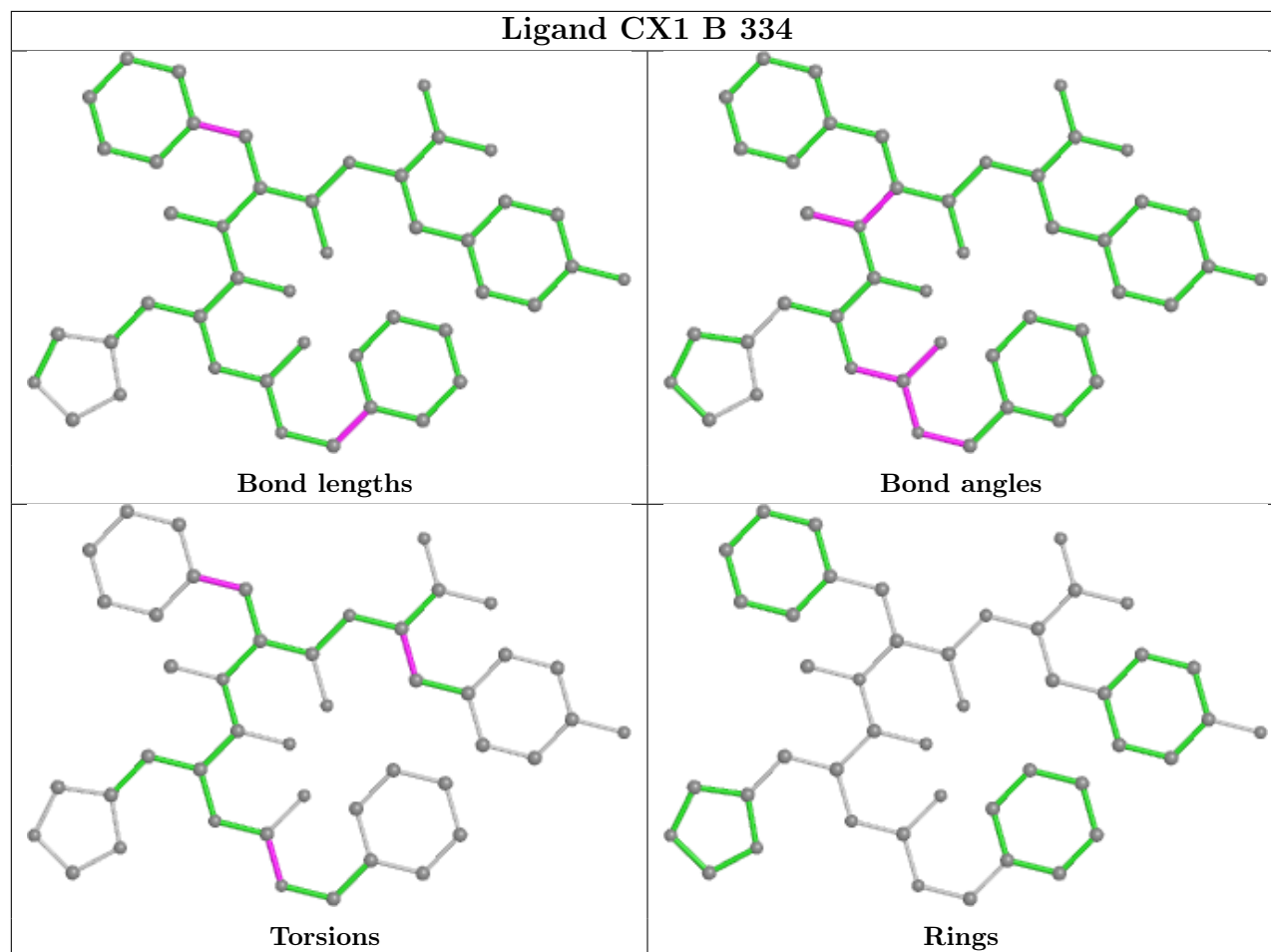
There are no ring outliers.

1 monomer is involved in 5 short contacts:

Mol	Chain	Res	Type	Clashes	Symm-Clashes
5	B	334	CX1	5	0

The following is a two-dimensional graphical depiction of Mogul quality analysis of bond lengths, bond angles, torsion angles, and ring geometry for all instances of the Ligand of Interest. In addition, ligands with molecular weight > 250 and outliers as shown on the validation Tables will also be included. For torsion angles, if less than 5% of the Mogul distribution of torsion angles is within 10 degrees of the torsion angle in question, then that torsion angle is considered an outlier. Any bond that is central to one or more torsion angles identified as an outlier by Mogul will be highlighted in the graph. For rings, the root-mean-square deviation (RMSD) between the ring in question and similar rings identified by Mogul is calculated over all ring torsion angles. If the average RMSD is greater than 60 degrees and the minimal RMSD between the ring in question and

any Mogul-identified rings is also greater than 60 degrees, then that ring is considered an outlier. The outliers are highlighted in purple. The color gray indicates Mogul did not find sufficient equivalents in the CSD to analyse the geometry.



5.7 Other polymers [i](#)

There are no such residues in this entry.

5.8 Polymer linkage issues [i](#)

There are no chain breaks in this entry.

6 Fit of model and data

6.1 Protein, DNA and RNA chains

In the following table, the column labelled ‘#RSRZ > 2’ contains the number (and percentage) of RSRZ outliers, followed by percent RSRZ outliers for the chain as percentile scores relative to all X-ray entries and entries of similar resolution. The OWAB column contains the minimum, median, 95th percentile and maximum values of the occupancy-weighted average B-factor per residue. The column labelled ‘Q < 0.9’ lists the number of (and percentage) of residues with an average occupancy less than 0.9.

Mol	Chain	Analysed	<RSRZ>	#RSRZ>2	OWAB(Å ²)	Q<0.9
1	A	306/334 (91%)	0.25	28 (9%) 9 12	23, 37, 61, 84	0
2	B	324/331 (97%)	0.05	11 (3%) 45 52	23, 34, 51, 66	0
All	All	630/665 (94%)	0.15	39 (6%) 20 26	23, 35, 57, 84	0

All (39) RSRZ outliers are listed below:

Mol	Chain	Res	Type	RSRZ
1	A	243	CYS	6.2
1	A	19	LEU	5.9
1	A	16	ALA	5.6
1	A	327	MET	5.4
1	A	21	ARG	5.1
2	B	13	ASP	4.6
1	A	242	ARG	4.4
1	A	18	ARG	4.4
1	A	175	PHE	4.4
1	A	176	SER	4.2
1	A	195	PRO	4.0
1	A	194	GLN	3.6
2	B	294	GLY	3.6
2	B	35	ASP	3.4
1	A	192	HIS	3.4
1	A	330	ALA	3.4
2	B	12	SER	3.3
1	A	121	PRO	3.2
1	A	220	PHE	3.2
2	B	331	SER	3.2
1	A	23	GLN	3.2
1	A	17	LYS	3.2
1	A	20	GLU	3.1
2	B	7	ASP	2.9

Continued on next page...

Continued from previous page...

Mol	Chain	Res	Type	RSRZ
2	B	283	GLY	2.9
2	B	295	ILE	2.7
1	A	173	ARG	2.6
2	B	296	ALA	2.6
2	B	14	ALA	2.5
2	B	304	GLU	2.5
1	A	275	LEU	2.4
1	A	244	GLU	2.4
1	A	193	PRO	2.3
1	A	274	LEU	2.3
1	A	329	TYR	2.2
1	A	266	LEU	2.2
1	A	174	ASN	2.1
1	A	42	GLY	2.1
1	A	122	GLU	2.0

6.2 Non-standard residues in protein, DNA, RNA chains [i](#)

There are no non-standard protein/DNA/RNA residues in this entry.

6.3 Carbohydrates [i](#)

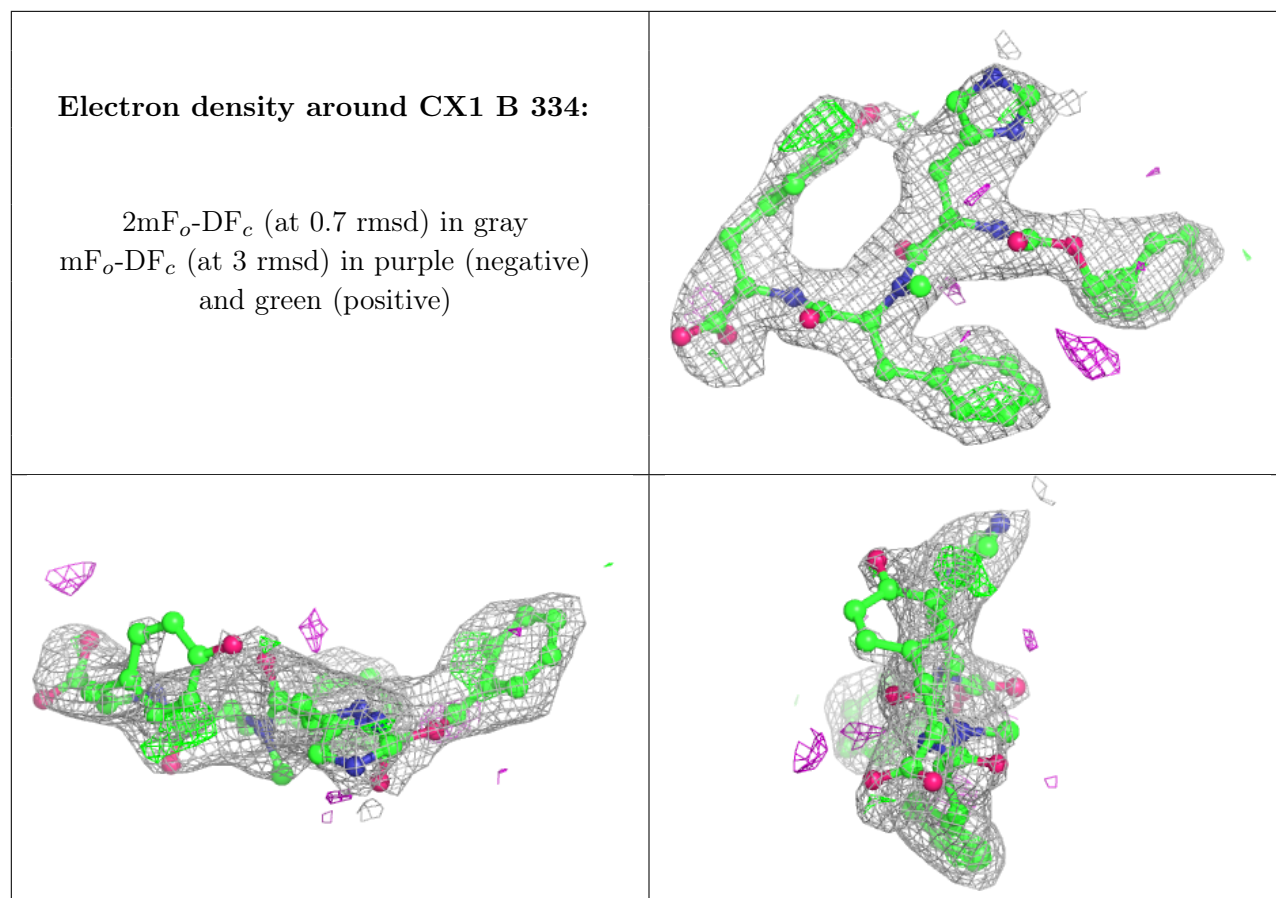
There are no monosaccharides in this entry.

6.4 Ligands [i](#)

In the following table, the Atoms column lists the number of modelled atoms in the group and the number defined in the chemical component dictionary. The B-factors column lists the minimum, median, 95th percentile and maximum values of B factors of atoms in the group. The column labelled 'Q< 0.9' lists the number of atoms with occupancy less than 0.9.

Mol	Type	Chain	Res	Atoms	RSCC	RSR	B-factors(Å ²)	Q<0.9
5	CX1	B	334	45/45	0.73	0.22	64,70,83,83	0
3	ZN	B	332	1/1	0.92	0.06	72,72,72,72	1
4	CA	B	333	1/1	0.96	0.04	67,67,67,67	0

The following is a graphical depiction of the model fit to experimental electron density of all instances of the Ligand of Interest. In addition, ligands with molecular weight > 250 and outliers as shown on the geometry validation Tables will also be included. Each fit is shown from different orientation to approximate a three-dimensional view.



6.5 Other polymers [i](#)

There are no such residues in this entry.