



Full wwPDB X-ray Structure Validation Report ⓘ

Oct 18, 2023 – 06:04 PM EDT

PDB ID : 2YRS
Title : Human hemoglobin D Los Angeles: crystal structure
Authors : Poy, C.D.; Moreno, F.; Bonini-Domingos, C.R.; Filgueira de Azevedo Jr., W.;
Bonilla-Rodriguez, G.O.
Deposited on : 2007-04-03
Resolution : 2.30 Å(reported)

This is a Full wwPDB X-ray Structure Validation Report for a publicly released PDB entry.

We welcome your comments at validation@mail.wwpdb.org

A user guide is available at

<https://www.wwpdb.org/validation/2017/XrayValidationReportHelp>

with specific help available everywhere you see the ⓘ symbol.

The types of validation reports are described at

<http://www.wwpdb.org/validation/2017/FAQs#types>.

The following versions of software and data (see [references ⓘ](#)) were used in the production of this report:

MolProbity : 4.02b-467
Mogul : 1.8.5 (274361), CSD as541be (2020)
Xtriage (Phenix) : 1.13
EDS : 2.36
buster-report : 1.1.7 (2018)
Percentile statistics : 20191225.v01 (using entries in the PDB archive December 25th 2019)
Refmac : 5.8.0158
CCP4 : 7.0.044 (Gargrove)
Ideal geometry (proteins) : Engh & Huber (2001)
Ideal geometry (DNA, RNA) : Parkinson et al. (1996)
Validation Pipeline (wwPDB-VP) : 2.36

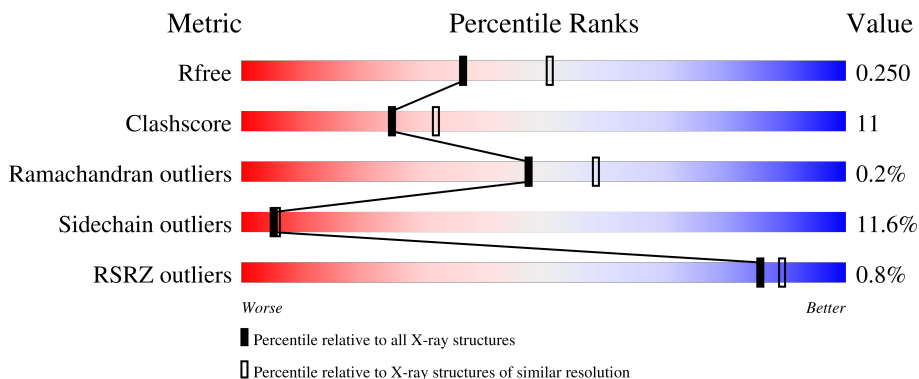
1 Overall quality at a glance

The following experimental techniques were used to determine the structure:

X-RAY DIFFRACTION

The reported resolution of this entry is 2.30 Å.

Percentile scores (ranging between 0-100) for global validation metrics of the entry are shown in the following graphic. The table shows the number of entries on which the scores are based.



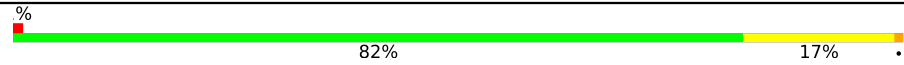


Metric	Whole archive (#Entries)	Similar resolution (#Entries, resolution range(Å))
R_{free}	130704	5042 (2.30-2.30)
Clashscore	141614	5643 (2.30-2.30)
Ramachandran outliers	138981	5575 (2.30-2.30)
Sidechain outliers	138945	5575 (2.30-2.30)
RSRZ outliers	127900	4938 (2.30-2.30)

The table below summarises the geometric issues observed across the polymeric chains and their fit to the electron density. The red, orange, yellow and green segments of the lower bar indicate the fraction of residues that contain outliers for ≥ 3 , 2, 1 and 0 types of geometric quality criteria respectively. A grey segment represents the fraction of residues that are not modelled. The numeric value for each fraction is indicated below the corresponding segment, with a dot representing fractions $\leq 5\%$. The upper red bar (where present) indicates the fraction of residues that have poor fit to the electron density. The numeric value is given above the bar.

Mol	Chain	Length	Quality of chain
1	A	141	
1	C	141	
1	I	141	
1	M	141	
2	B	146	

Continued on next page...

Continued from previous page...

Mol	Chain	Length	Quality of chain
2	D	146	 <p>% 82% 17% .</p>
2	K	146	 <p>73% 23% . .</p>
2	O	146	 <p>% 70% 28% . .</p>

2 Entry composition [i](#)

There are 4 unique types of molecules in this entry. The entry contains 9247 atoms, of which 0 are hydrogens and 0 are deuteriums.

In the tables below, the ZeroOcc column contains the number of atoms modelled with zero occupancy, the AltConf column contains the number of residues with at least one atom in alternate conformation and the Trace column contains the number of residues modelled with at most 2 atoms.

- Molecule 1 is a protein called Hemoglobin subunit alpha.

Mol	Chain	Residues	Atoms					ZeroOcc	AltConf	Trace
			Total	C	N	O	S			
1	A	141	1069	685	187	194	3	0	0	0
1	C	141	1069	685	187	194	3	0	0	0
1	I	141	1069	685	187	194	3	0	0	0
1	M	141	1069	685	187	194	3	0	0	0

- Molecule 2 is a protein called Hemoglobin subunit beta.

Mol	Chain	Residues	Atoms					ZeroOcc	AltConf	Trace
			Total	C	N	O	S			
2	B	146	1123	724	196	200	3	0	0	0
2	D	146	1123	724	196	200	3	0	0	0
2	K	146	1123	724	196	200	3	0	0	0
2	O	146	1123	724	196	200	3	0	0	0

There are 4 discrepancies between the modelled and reference sequences:

Chain	Residue	Modelled	Actual	Comment	Reference
B	122	GLN	GLU	SEE REMARK 999	UNP P68871
D	122	GLN	GLU	SEE REMARK 999	UNP P68871
K	122	GLN	GLU	SEE REMARK 999	UNP P68871
O	122	GLN	GLU	SEE REMARK 999	UNP P68871

- Molecule 3 is PROTOPORPHYRIN IX CONTAINING FE (three-letter code: HEM) (formula: $C_{34}H_{32}FeN_4O_4$).



Mol	Chain	Residues	Atoms				ZeroOcc	AltConf	
			Total	C	Fe	N			O
3	A	1	Total 43	C 34	Fe 1	N 4	O 4	0	0
3	B	1	Total 43	C 34	Fe 1	N 4	O 4	0	0
3	C	1	Total 43	C 34	Fe 1	N 4	O 4	0	0
3	D	1	Total 43	C 34	Fe 1	N 4	O 4	0	0
3	I	1	Total 43	C 34	Fe 1	N 4	O 4	0	0
3	K	1	Total 43	C 34	Fe 1	N 4	O 4	0	0
3	M	1	Total 43	C 34	Fe 1	N 4	O 4	0	0
3	O	1	Total 43	C 34	Fe 1	N 4	O 4	0	0

- Molecule 4 is water.

Mol	Chain	Residues	Atoms		ZeroOcc	AltConf
4	A	11	Total 11	O 11	0	0
4	B	20	Total 20	O 20	0	0
4	C	29	Total 29	O 29	0	0
4	D	10	Total 10	O 10	0	0

Continued on next page...

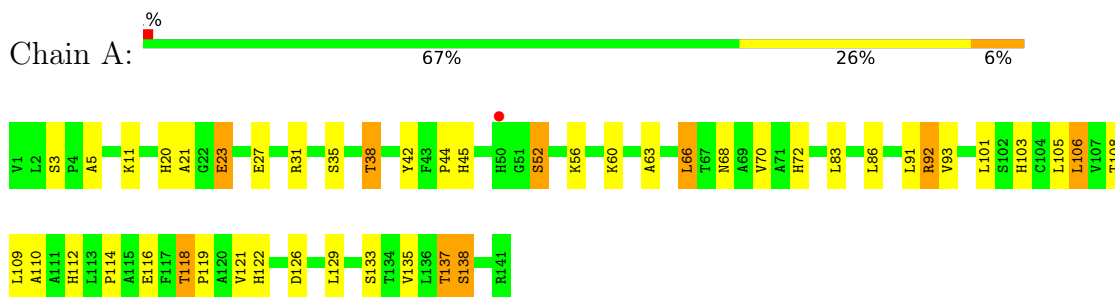
Continued from previous page...

Mol	Chain	Residues	Atoms		ZeroOcc	AltConf
4	I	28	Total 28	O 28	0	0
4	K	9	Total 9	O 9	0	0
4	M	12	Total 12	O 12	0	0
4	O	16	Total 16	O 16	0	0

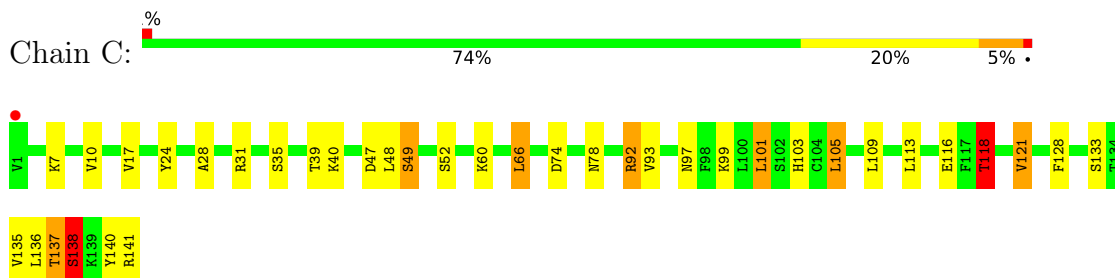
3 Residue-property plots [i](#)

These plots are drawn for all protein, RNA, DNA and oligosaccharide chains in the entry. The first graphic for a chain summarises the proportions of the various outlier classes displayed in the second graphic. The second graphic shows the sequence view annotated by issues in geometry and electron density. Residues are color-coded according to the number of geometric quality criteria for which they contain at least one outlier: green = 0, yellow = 1, orange = 2 and red = 3 or more. A red dot above a residue indicates a poor fit to the electron density ($RSRZ > 2$). Stretches of 2 or more consecutive residues without any outlier are shown as a green connector. Residues present in the sample, but not in the model, are shown in grey.

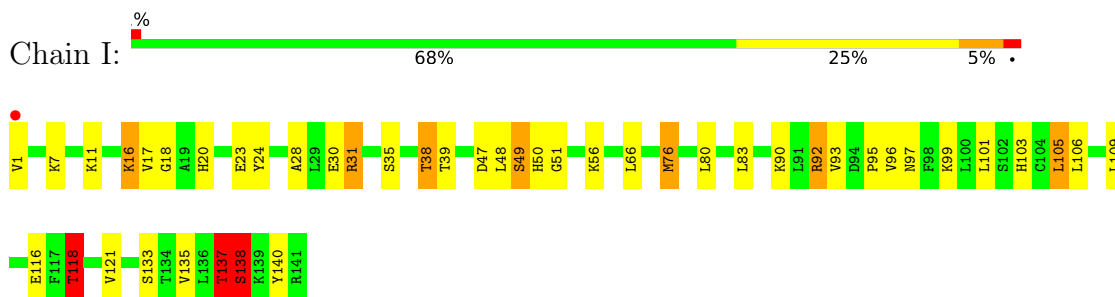
- Molecule 1: Hemoglobin subunit alpha



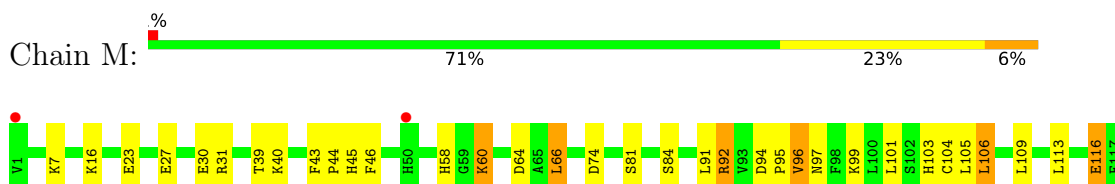
- Molecule 1: Hemoglobin subunit alpha



- Molecule 1: Hemoglobin subunit alpha



- Molecule 1: Hemoglobin subunit alpha

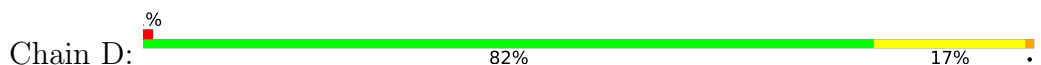




• Molecule 2: Hemoglobin subunit beta



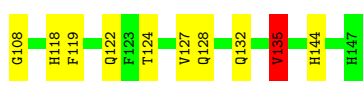
• Molecule 2: Hemoglobin subunit beta



• Molecule 2: Hemoglobin subunit beta



• Molecule 2: Hemoglobin subunit beta



4 Data and refinement statistics i

Property	Value	Source
Space group	P 1 21 1	Depositor
Cell constants a, b, c, α , β , γ	82.70Å 62.76Å 110.22Å 90.00° 90.05° 90.00°	Depositor
Resolution (Å)	41.42 – 2.30 41.41 – 2.30	Depositor EDS
% Data completeness (in resolution range)	89.1 (41.42-2.30) 88.9 (41.41-2.30)	Depositor EDS
R_{merge}	0.09	Depositor
R_{sym}	0.11	Depositor
$\langle I/\sigma(I) \rangle$ ¹	4.48 (at 2.29Å)	Xtrriage
Refinement program	REFMAC 5.2.0005	Depositor
R, R_{free}	0.160 , 0.252 0.160 , 0.250	Depositor DCC
R_{free} test set	2300 reflections (5.11%)	wwPDB-VP
Wilson B-factor (Å ²)	22.8	Xtrriage
Anisotropy	0.131	Xtrriage
Bulk solvent k_{sol} (e/Å ³), B_{sol} (Å ²)	0.29 , 5.8	EDS
L-test for twinning ²	$\langle L \rangle = 0.50$, $\langle L^2 \rangle = 0.34$	Xtrriage
Estimated twinning fraction	0.457 for h,-k,-l	Xtrriage
F_o, F_c correlation	0.96	EDS
Total number of atoms	9247	wwPDB-VP
Average B, all atoms (Å ²)	25.0	wwPDB-VP

Xtrriage's analysis on translational NCS is as follows: *The largest off-origin peak in the Patterson function is 6.38% of the height of the origin peak. No significant pseudotranslation is detected.*

¹Intensities estimated from amplitudes.

²Theoretical values of $\langle |L| \rangle$, $\langle L^2 \rangle$ for acentric reflections are 0.5, 0.333 respectively for untwinned datasets, and 0.375, 0.2 for perfectly twinned datasets.

5 Model quality [i](#)

5.1 Standard geometry [i](#)

Bond lengths and bond angles in the following residue types are not validated in this section: HEM

The Z score for a bond length (or angle) is the number of standard deviations the observed value is removed from the expected value. A bond length (or angle) with $|Z| > 5$ is considered an outlier worth inspection. RMSZ is the root-mean-square of all Z scores of the bond lengths (or angles).

Mol	Chain	Bond lengths		Bond angles	
		RMSZ	# Z >5	RMSZ	# Z >5
1	A	0.99	1/1097 (0.1%)	0.91	1/1491 (0.1%)
1	C	1.15	2/1097 (0.2%)	1.07	5/1491 (0.3%)
1	I	1.19	3/1097 (0.3%)	1.06	2/1491 (0.1%)
1	M	1.00	1/1097 (0.1%)	0.90	1/1491 (0.1%)
2	B	1.06	1/1153 (0.1%)	0.93	1/1566 (0.1%)
2	D	1.01	2/1153 (0.2%)	0.88	0/1566
2	K	1.04	0/1153	0.98	5/1566 (0.3%)
2	O	1.12	2/1153 (0.2%)	0.90	0/1566
All	All	1.07	12/9000 (0.1%)	0.95	15/12228 (0.1%)

All (12) bond length outliers are listed below:

Mol	Chain	Res	Type	Atoms	Z	Observed(Å)	Ideal(Å)
1	I	138	SER	CB-OG	-8.66	1.30	1.42
2	O	80	ASP	CB-CG	7.38	1.67	1.51
1	M	104	CYS	CB-SG	-6.33	1.71	1.82
2	D	113	CYS	CB-SG	-5.85	1.72	1.81
1	C	138	SER	CB-OG	-5.60	1.34	1.42
2	O	135	VAL	CB-CG2	-5.57	1.41	1.52
2	D	135	VAL	CB-CG2	-5.36	1.41	1.52
1	I	137	THR	CB-CG2	-5.34	1.34	1.52
1	A	116	GLU	CG-CD	5.20	1.59	1.51
1	C	121	VAL	CB-CG2	5.17	1.63	1.52
1	I	23	GLU	CG-CD	5.03	1.59	1.51
2	B	91	GLU	CG-CD	5.00	1.59	1.51

All (15) bond angle outliers are listed below:

Mol	Chain	Res	Type	Atoms	Z	Observed(°)	Ideal(°)
2	K	15	LEU	CA-CB-CG	7.52	132.59	115.30

Continued on next page...

Continued from previous page...

Mol	Chain	Res	Type	Atoms	Z	Observed(°)	Ideal(°)
1	I	31	ARG	NE-CZ-NH2	-7.15	116.72	120.30
1	C	141	ARG	NE-CZ-NH2	-7.01	116.80	120.30
1	C	31	ARG	NE-CZ-NH1	6.33	123.47	120.30
1	C	31	ARG	NE-CZ-NH2	-6.15	117.23	120.30
1	C	66	LEU	CB-CG-CD1	6.08	121.34	111.00
1	C	118	THR	N-CA-CB	-5.91	99.07	110.30
2	K	100	ASP	CB-CG-OD1	5.68	123.42	118.30
1	I	118	THR	N-CA-CB	-5.46	99.93	110.30
1	A	126	ASP	CB-CG-OD2	5.35	123.12	118.30
2	K	3	HIS	N-CA-C	5.23	125.12	111.00
1	M	106	LEU	CA-CB-CG	5.21	127.28	115.30
2	K	4	LEU	CA-CB-CG	5.21	127.28	115.30
2	K	27	GLU	CA-CB-CG	5.12	124.67	113.40
2	B	135	VAL	CG1-CB-CG2	5.09	119.05	110.90

There are no chirality outliers.

There are no planarity outliers.

5.2 Too-close contacts [i](#)

In the following table, the Non-H and H(model) columns list the number of non-hydrogen atoms and hydrogen atoms in the chain respectively. The H(added) column lists the number of hydrogen atoms added and optimized by MolProbity. The Clashes column lists the number of clashes within the asymmetric unit, whereas Symm-Clashes lists symmetry-related clashes.

Mol	Chain	Non-H	H(model)	H(added)	Clashes	Symm-Clashes
1	A	1069	0	1073	29	0
1	C	1069	0	1073	26	0
1	I	1069	0	1073	28	0
1	M	1069	0	1073	26	0
2	B	1123	0	1117	26	0
2	D	1123	0	1117	21	0
2	K	1123	0	1117	27	0
2	O	1123	0	1117	34	0
3	A	43	0	30	4	0
3	B	43	0	30	3	0
3	C	43	0	30	2	0
3	D	43	0	30	5	0
3	I	43	0	30	0	0
3	K	43	0	30	2	0
3	M	43	0	30	2	0

Continued on next page...

Continued from previous page...

Mol	Chain	Non-H	H(model)	H(added)	Clashes	Symm-Clashes
3	O	43	0	30	2	0
4	A	11	0	0	1	0
4	B	20	0	0	1	0
4	C	29	0	0	4	0
4	D	10	0	0	0	0
4	I	28	0	0	2	0
4	K	9	0	0	2	0
4	M	12	0	0	1	0
4	O	16	0	0	0	0
All	All	9247	0	9000	195	0

The all-atom clashscore is defined as the number of clashes found per 1000 atoms (including hydrogen atoms). The all-atom clashscore for this structure is 11.

All (195) close contacts within the same asymmetric unit are listed below, sorted by their clash magnitude.

Atom-1	Atom-2	Interatomic distance (Å)	Clash overlap (Å)
1:C:78:ASN:HB3	4:C:147:HOH:O	1.23	1.26
1:C:7:LYS:HE2	1:C:74:ASP:OD1	1.54	1.05
2:K:3:HIS:HD2	2:K:4:LEU:HD23	1.21	1.04
1:I:38:THR:HG23	4:I:148:HOH:O	1.64	0.96
2:K:3:HIS:CD2	2:K:4:LEU:HD23	2.02	0.94
1:I:38:THR:CG2	4:I:148:HOH:O	2.18	0.89
1:M:135:VAL:O	1:M:138:SER:HB2	1.74	0.88
1:M:113:LEU:HB3	1:M:116:GLU:HG2	1.58	0.85
1:I:135:VAL:O	1:I:138:SER:HB2	1.78	0.84
2:K:3:HIS:HD2	2:K:4:LEU:CD2	1.92	0.83
1:M:7:LYS:HE2	1:M:74:ASP:OD1	1.80	0.81
2:K:66:LYS:HE3	4:K:152:HOH:O	1.81	0.80
2:B:76:LEU:O	2:B:79:LEU:HD22	1.81	0.79
1:M:113:LEU:HB3	1:M:116:GLU:CG	2.14	0.77
1:I:103:HIS:HE1	2:K:132:GLN:OE1	1.68	0.76
1:A:103:HIS:HE1	2:B:132:GLN:OE1	1.68	0.76
1:I:92:ARG:HB3	2:O:38:TRP:HB2	1.68	0.75
1:I:96:VAL:HG13	1:I:99:LYS:HE2	1.67	0.74
2:K:66:LYS:CE	4:K:152:HOH:O	2.35	0.74
1:I:7:LYS:O	1:I:11:LYS:HG3	1.88	0.74
1:A:42:TYR:CE1	1:A:93:VAL:HA	2.23	0.73
1:C:103:HIS:HE1	2:D:132:GLN:OE1	1.72	0.71
1:C:113:LEU:HD13	1:C:116:GLU:HG2	1.70	0.71
1:M:103:HIS:HE1	2:O:132:GLN:OE1	1.74	0.71

Continued on next page...

Continued from previous page...

Atom-1	Atom-2	Interatomic distance (Å)	Clash overlap (Å)
2:O:21:VAL:HG13	2:O:69:LEU:HD12	1.73	0.71
2:B:44:GLU:HG2	4:B:155:HOH:O	1.90	0.71
1:C:118:THR:HG22	1:C:121:VAL:H	1.57	0.69
1:I:118:THR:HG22	1:I:121:VAL:H	1.58	0.69
2:O:16:TRP:CH2	2:O:69:LEU:HD11	2.29	0.68
1:C:137:THR:HG22	4:C:156:HOH:O	1.94	0.68
2:O:39:THR:HG22	2:O:103:ASN:ND2	2.10	0.66
1:M:119:PRO:HG2	2:O:56:MET:HG3	1.76	0.66
1:M:137:THR:HG22	4:M:148:HOH:O	1.96	0.65
1:I:96:VAL:HG13	1:I:99:LYS:CE	2.27	0.64
1:I:35:SER:HB3	2:K:132:GLN:HG3	1.79	0.63
1:M:133:SER:O	1:M:137:THR:HB	1.98	0.63
1:A:135:VAL:O	1:A:138:SER:HB2	1.99	0.63
2:B:38:TRP:HB2	1:C:92:ARG:HB3	1.81	0.61
2:O:82:LEU:HD22	2:O:86:PHE:HE2	1.64	0.61
2:D:22:ASP:OD1	2:D:66:LYS:HD2	1.99	0.61
1:C:35:SER:HB3	2:D:132:GLN:HG3	1.81	0.61
2:O:18:LYS:NZ	2:O:122:GLN:OE1	2.34	0.61
2:D:142:LEU:CD1	3:D:148:HEM:HAB	2.31	0.60
1:M:118:THR:HG22	1:M:121:VAL:H	1.67	0.60
2:D:142:LEU:HD11	3:D:148:HEM:C3B	2.37	0.59
2:K:21:VAL:HG13	2:K:69:LEU:HB3	1.83	0.59
2:K:95:ASP:OD1	2:K:147:HIS:NE2	2.33	0.59
1:I:20:HIS:HB3	1:I:24:TYR:CE1	2.37	0.58
2:O:108:GLY:CA	2:O:135:VAL:HG22	2.33	0.58
1:C:28:ALA:CB	1:C:105:LEU:HD13	2.33	0.58
1:C:135:VAL:O	1:C:138:SER:HB2	2.04	0.58
2:B:21:VAL:HG13	2:B:69:LEU:HB3	1.85	0.58
2:D:16:TRP:HH2	2:D:69:LEU:CD1	2.16	0.57
2:B:39:THR:HG22	2:B:103:ASN:ND2	2.17	0.57
2:O:108:GLY:HA2	2:O:135:VAL:CG2	2.35	0.57
1:M:39:THR:HG22	1:M:97:ASN:HD22	1.70	0.57
2:O:124:THR:OG1	2:O:127:VAL:HG23	2.05	0.56
2:O:102:GLU:OE1	2:O:105:ARG:NH1	2.38	0.56
1:A:118:THR:HG23	4:A:144:HOH:O	2.05	0.55
1:A:118:THR:HG22	1:A:121:VAL:H	1.72	0.55
2:O:92:LEU:HD12	2:O:96:LYS:HG3	1.87	0.55
2:K:39:THR:HG22	2:K:103:ASN:ND2	2.21	0.55
1:C:47:ASP:OD1	1:C:49:SER:OG	2.24	0.55
2:B:147:HIS:OXT	1:C:40:LYS:NZ	2.39	0.55
1:C:133:SER:O	1:C:137:THR:HB	2.07	0.55

Continued on next page...

Continued from previous page...

Atom-1	Atom-2	Interatomic distance (Å)	Clash overlap (Å)
1:I:93:VAL:O	1:I:140:TYR:HE2	1.90	0.55
1:I:133:SER:O	1:I:137:THR:HB	2.07	0.54
1:M:94:ASP:OD1	1:M:96:VAL:HB	2.08	0.54
1:I:103:HIS:CE1	2:K:132:GLN:OE1	2.55	0.54
1:A:112:HIS:O	1:A:114:PRO:HD3	2.08	0.54
1:I:30:GLU:OE2	1:I:50:HIS:HD2	1.91	0.53
2:D:6:PRO:HD2	2:D:7:GLU:OE1	2.08	0.53
2:B:25:GLY:HA2	2:B:69:LEU:HG	1.91	0.53
1:C:40:LYS:HG2	1:C:48:LEU:CD1	2.38	0.53
1:M:103:HIS:CE1	2:O:132:GLN:OE1	2.57	0.53
2:B:103:ASN:HB3	3:B:148:HEM:HMC1	1.91	0.53
2:O:46:PHE:HA	2:O:60:LYS:HD2	1.91	0.53
1:I:92:ARG:HD3	2:O:41:ARG:HB3	1.91	0.53
2:O:108:GLY:CA	2:O:135:VAL:CG2	2.87	0.53
2:B:125:PRO:HB2	2:B:126:PRO:HD3	1.91	0.52
1:A:92:ARG:HG2	2:D:38:TRP:HA	1.91	0.52
1:A:35:SER:HB3	2:B:132:GLN:HG3	1.91	0.52
1:I:76:MET:HG2	1:I:80:LEU:HD12	1.92	0.52
1:M:113:LEU:HD22	1:M:116:GLU:HG3	1.91	0.52
2:O:108:GLY:HA2	2:O:135:VAL:HG22	1.92	0.52
2:O:16:TRP:HH2	2:O:69:LEU:HD11	1.74	0.52
2:O:39:THR:HG22	2:O:103:ASN:HD22	1.75	0.52
1:A:20:HIS:HB3	1:A:23:GLU:OE2	2.10	0.51
1:C:103:HIS:CE1	2:D:132:GLN:OE1	2.58	0.51
1:A:31:ARG:HD2	1:A:108:THR:OG1	2.10	0.51
1:A:103:HIS:CE1	2:B:132:GLN:OE1	2.58	0.51
2:B:131:TYR:O	2:B:135:VAL:HB	2.10	0.51
2:O:103:ASN:HB3	3:O:148:HEM:HMC1	1.93	0.51
2:O:118:HIS:HD2	2:O:119:PHE:CE2	2.29	0.51
2:B:76:LEU:O	2:B:79:LEU:CD2	2.58	0.51
1:C:103:HIS:HD2	4:C:157:HOH:O	1.94	0.50
2:B:63:ALA:O	2:B:66:LYS:HB3	2.12	0.50
1:A:114:PRO:O	2:B:117:HIS:NE2	2.42	0.49
1:C:17:VAL:HG13	1:C:24:TYR:CD2	2.47	0.49
2:O:108:GLY:HA3	2:O:135:VAL:HG22	1.94	0.49
2:K:92:LEU:HD12	2:K:96:LYS:HG3	1.94	0.49
1:I:47:ASP:OD1	1:I:49:SER:HB3	2.13	0.49
2:B:4:LEU:HB2	2:B:9:LYS:HG3	1.95	0.49
1:I:92:ARG:HB3	2:O:38:TRP:CB	2.41	0.49
1:A:27:GLU:OE1	1:A:112:HIS:NE2	2.38	0.48
1:I:93:VAL:O	1:I:140:TYR:CE2	2.66	0.48

Continued on next page...

Continued from previous page...

Atom-1	Atom-2	Interatomic distance (Å)	Clash overlap (Å)
2:O:20:ASN:HB3	2:O:23:GLU:HB3	1.95	0.48
2:K:64:HIS:HE1	3:K:148:HEM:CHA	2.26	0.48
1:I:16:LYS:HG3	1:I:116:GLU:OE2	2.14	0.48
2:D:142:LEU:HD12	3:D:148:HEM:HAB	1.96	0.48
1:C:78:ASN:CB	4:C:147:HOH:O	2.09	0.48
1:C:39:THR:HG22	1:C:97:ASN:HD22	1.78	0.47
2:K:64:HIS:CE1	3:K:148:HEM:HBD2	2.48	0.47
2:D:142:LEU:HD11	3:D:148:HEM:CAB	2.44	0.47
1:A:86:LEU:HD21	3:A:142:HEM:HBA2	1.97	0.47
2:D:39:THR:HG22	2:D:103:ASN:ND2	2.30	0.47
1:M:60:LYS:HD3	1:M:64:ASP:OD2	2.15	0.47
2:B:67:LYS:HD3	3:B:148:HEM:HAA2	1.97	0.47
2:K:147:HIS:OXT	1:M:40:LYS:NZ	2.36	0.47
2:O:118:HIS:HD2	2:O:119:PHE:CZ	2.32	0.47
2:O:82:LEU:HD22	2:O:86:PHE:CE2	2.47	0.47
1:I:39:THR:HG22	1:I:97:ASN:HD22	1.80	0.47
2:B:52:PRO:O	2:B:56:MET:HG2	2.16	0.46
1:I:17:VAL:O	1:I:18:GLY:C	2.52	0.46
2:O:54:ALA:O	2:O:58:ASN:HB2	2.15	0.46
1:A:106:LEU:HD13	1:A:129:LEU:HD12	1.96	0.46
2:O:83:LYS:HD3	2:O:144:HIS:CG	2.51	0.46
2:B:92:LEU:HD12	2:B:96:LYS:HD3	1.97	0.46
1:M:113:LEU:HB3	1:M:116:GLU:HG3	1.94	0.46
2:D:21:VAL:HG13	2:D:69:LEU:HB3	1.98	0.46
2:K:27:GLU:HG3	2:K:118:HIS:HE1	1.81	0.46
1:A:27:GLU:O	1:A:31:ARG:HG3	2.16	0.45
1:A:91:LEU:HD13	3:A:142:HEM:C4D	2.51	0.45
2:O:22:ASP:OD1	2:O:66:LYS:NZ	2.47	0.45
1:A:21:ALA:HB1	1:A:63:ALA:HB1	1.97	0.45
1:I:96:VAL:HG13	1:I:99:LYS:NZ	2.31	0.45
1:A:44:PRO:HD2	1:A:45:HIS:ND1	2.32	0.45
1:A:119:PRO:O	1:A:122:HIS:HB3	2.17	0.45
2:K:25:GLY:N	2:K:69:LEU:HD12	2.31	0.45
2:B:7:GLU:H	2:B:7:GLU:HG3	1.47	0.45
2:B:102:GLU:OE1	2:B:105:ARG:NH1	2.44	0.45
2:D:39:THR:HG22	2:D:103:ASN:HD22	1.82	0.45
1:I:51:GLY:O	1:I:56:LYS:HD3	2.16	0.45
1:C:24:TYR:N	1:C:24:TYR:CD1	2.85	0.45
2:O:97:LEU:HD13	3:O:148:HEM:C3D	2.52	0.45
3:C:142:HEM:HMB1	3:C:142:HEM:HBB2	1.99	0.44
1:C:93:VAL:O	1:C:140:TYR:HE2	2.00	0.44

Continued on next page...

Continued from previous page...

Atom-1	Atom-2	Interatomic distance (Å)	Clash overlap (Å)
1:C:10:VAL:HG21	1:C:128:PHE:HB2	1.99	0.44
2:D:35:VAL:C	2:D:37:PRO:HD3	2.38	0.44
2:D:142:LEU:CD1	3:D:148:HEM:CAB	2.95	0.44
2:K:73:SER:O	2:K:76:LEU:HB2	2.18	0.44
1:C:40:LYS:HG2	1:C:48:LEU:HD13	2.00	0.44
1:M:66:LEU:HD12	1:M:66:LEU:HA	1.86	0.44
2:D:16:TRP:CH2	2:D:69:LEU:CD1	3.00	0.44
2:O:69:LEU:HD22	2:O:69:LEU:HA	1.83	0.44
1:A:52:SER:O	1:A:56:LYS:HD2	2.17	0.43
1:I:31:ARG:HD3	2:K:128:GLN:OE1	2.18	0.43
2:B:64:HIS:HE1	3:B:148:HEM:C4D	2.36	0.43
1:M:27:GLU:O	1:M:31:ARG:HG3	2.18	0.43
1:M:31:ARG:HD3	2:O:128:GLN:OE1	2.17	0.43
2:B:29:LEU:HD21	2:B:64:HIS:HD2	1.84	0.43
2:B:46:PHE:HA	2:B:60:LYS:HD3	2.00	0.43
1:M:43:PHE:HB3	1:M:46:PHE:HB2	2.01	0.43
1:M:91:LEU:HD13	3:M:142:HEM:C4D	2.53	0.43
2:K:56:MET:O	2:K:62:LYS:HE2	2.19	0.43
1:A:3:SER:OG	1:A:5:ALA:HB3	2.18	0.43
1:A:110:ALA:HB1	2:B:117:HIS:HB2	2.01	0.43
1:A:86:LEU:CD2	3:A:142:HEM:HBA1	2.49	0.42
1:I:48:LEU:HA	1:I:48:LEU:HD23	1.83	0.42
1:M:58:HIS:HE1	3:M:142:HEM:CHA	2.32	0.42
1:M:118:THR:O	1:M:119:PRO:C	2.56	0.42
2:D:51:THR:O	2:D:55:VAL:HG23	2.18	0.42
2:O:16:TRP:CZ2	2:O:69:LEU:HD11	2.53	0.42
2:K:3:HIS:HB3	2:K:4:LEU:H	1.62	0.42
1:A:133:SER:O	1:A:137:THR:HB	2.20	0.42
1:I:28:ALA:CB	1:I:105:LEU:HD13	2.49	0.42
1:A:68:ASN:OD1	1:A:72:HIS:CD2	2.73	0.42
1:A:86:LEU:HD21	3:A:142:HEM:CBA	2.49	0.42
1:C:136:LEU:HA	1:C:136:LEU:HD23	1.70	0.42
2:K:33:LEU:HD12	2:K:39:THR:OG1	2.19	0.42
1:M:118:THR:HG22	1:M:121:VAL:HG23	2.02	0.42
1:A:83:LEU:HD12	1:A:83:LEU:HA	1.76	0.41
2:K:81:ASN:ND2	2:K:84:GLY:HA3	2.35	0.41
2:D:15:LEU:HD11	2:D:119:PHE:CD2	2.55	0.41
1:C:93:VAL:O	1:C:140:TYR:CE2	2.73	0.41
2:K:67:LYS:HE3	2:K:67:LYS:HB2	1.42	0.41
2:D:16:TRP:CH2	2:D:69:LEU:HD12	2.55	0.41
1:C:101:LEU:HD22	1:C:105:LEU:HD22	2.02	0.41

Continued on next page...

Continued from previous page...

Atom-1	Atom-2	Interatomic distance (Å)	Clash overlap (Å)
2:K:38:TRP:HB2	1:M:92:ARG:HB3	2.03	0.41
2:K:16:TRP:HH2	2:K:69:LEU:CD2	2.34	0.41
2:K:106:LEU:O	2:K:110:VAL:HG23	2.21	0.40
1:A:66:LEU:O	1:A:70:VAL:HG23	2.21	0.40
3:C:142:HEM:HBB2	3:C:142:HEM:CMB	2.52	0.40
2:D:5:THR:OG1	2:D:8:GLU:HG3	2.21	0.40
1:M:44:PRO:HD2	1:M:45:HIS:ND1	2.36	0.40

There are no symmetry-related clashes.

5.3 Torsion angles [i](#)

5.3.1 Protein backbone [i](#)

In the following table, the Percentiles column shows the percent Ramachandran outliers of the chain as a percentile score with respect to all X-ray entries followed by that with respect to entries of similar resolution.

The Analysed column shows the number of residues for which the backbone conformation was analysed, and the total number of residues.

Mol	Chain	Analysed	Favoured	Allowed	Outliers	Percentiles	
1	A	139/141 (99%)	131 (94%)	7 (5%)	1 (1%)	22	26
1	C	139/141 (99%)	138 (99%)	1 (1%)	0	100	100
1	I	139/141 (99%)	137 (99%)	2 (1%)	0	100	100
1	M	139/141 (99%)	131 (94%)	8 (6%)	0	100	100
2	B	144/146 (99%)	137 (95%)	7 (5%)	0	100	100
2	D	144/146 (99%)	137 (95%)	7 (5%)	0	100	100
2	K	144/146 (99%)	138 (96%)	5 (4%)	1 (1%)	22	26
2	O	144/146 (99%)	137 (95%)	7 (5%)	0	100	100
All	All	1132/1148 (99%)	1086 (96%)	44 (4%)	2 (0%)	47	58

All (2) Ramachandran outliers are listed below:

Mol	Chain	Res	Type
1	A	38	THR
2	K	41	ARG

5.3.2 Protein sidechains

In the following table, the Percentiles column shows the percent sidechain outliers of the chain as a percentile score with respect to all X-ray entries followed by that with respect to entries of similar resolution.

The Analysed column shows the number of residues for which the sidechain conformation was analysed, and the total number of residues.

Mol	Chain	Analysed	Rotameric	Outliers	Percentiles	
1	A	113/113 (100%)	99 (88%)	14 (12%)	4	5
1	C	113/113 (100%)	101 (89%)	12 (11%)	6	7
1	I	113/113 (100%)	96 (85%)	17 (15%)	3	3
1	M	113/113 (100%)	94 (83%)	19 (17%)	2	2
2	B	118/118 (100%)	104 (88%)	14 (12%)	5	5
2	D	118/118 (100%)	111 (94%)	7 (6%)	19	27
2	K	118/118 (100%)	105 (89%)	13 (11%)	6	7
2	O	118/118 (100%)	107 (91%)	11 (9%)	9	10
All	All	924/924 (100%)	817 (88%)	107 (12%)	5	6

All (107) residues with a non-rotameric sidechain are listed below:

Mol	Chain	Res	Type
1	A	11	LYS
1	A	23	GLU
1	A	38	THR
1	A	52	SER
1	A	60	LYS
1	A	66	LEU
1	A	92	ARG
1	A	101	LEU
1	A	105	LEU
1	A	106	LEU
1	A	109	LEU
1	A	118	THR
1	A	137	THR
1	A	138	SER
2	B	7	GLU
2	B	15	LEU
2	B	22	ASP
2	B	33	LEU
2	B	45	SER

Continued on next page...

Continued from previous page...

Mol	Chain	Res	Type
2	B	51	THR
2	B	62	LYS
2	B	69	LEU
2	B	73	SER
2	B	76	LEU
2	B	79	LEU
2	B	96	LYS
2	B	125	PRO
2	B	135	VAL
1	C	49	SER
1	C	52	SER
1	C	60	LYS
1	C	66	LEU
1	C	92	ARG
1	C	99	LYS
1	C	101	LEU
1	C	105	LEU
1	C	109	LEU
1	C	118	THR
1	C	137	THR
1	C	138	SER
2	D	3	HIS
2	D	10	SER
2	D	15	LEU
2	D	33	LEU
2	D	45	SER
2	D	79	LEU
2	D	135	VAL
1	I	1	VAL
1	I	16	LYS
1	I	38	THR
1	I	49	SER
1	I	66	LEU
1	I	76	MET
1	I	83	LEU
1	I	90	LYS
1	I	92	ARG
1	I	95	PRO
1	I	101	LEU
1	I	105	LEU
1	I	106	LEU
1	I	109	LEU

Continued on next page...

Continued from previous page...

Mol	Chain	Res	Type
1	I	118	THR
1	I	137	THR
1	I	138	SER
2	K	3	HIS
2	K	4	LEU
2	K	7	GLU
2	K	10	SER
2	K	22	ASP
2	K	27	GLU
2	K	33	LEU
2	K	69	LEU
2	K	79	LEU
2	K	83	LYS
2	K	91	GLU
2	K	135	VAL
2	K	147	HIS
1	M	16	LYS
1	M	23	GLU
1	M	30	GLU
1	M	60	LYS
1	M	66	LEU
1	M	81	SER
1	M	84	SER
1	M	92	ARG
1	M	95	PRO
1	M	96	VAL
1	M	99	LYS
1	M	101	LEU
1	M	105	LEU
1	M	106	LEU
1	M	109	LEU
1	M	116	GLU
1	M	118	THR
1	M	137	THR
1	M	138	SER
2	O	2	VAL
2	O	7	GLU
2	O	9	LYS
2	O	15	LEU
2	O	22	ASP
2	O	33	LEU
2	O	69	LEU

Continued on next page...

Continued from previous page...

Mol	Chain	Res	Type
2	O	73	SER
2	O	76	LEU
2	O	79	LEU
2	O	135	VAL

Sometimes sidechains can be flipped to improve hydrogen bonding and reduce clashes. All (31) such sidechains are listed below:

Mol	Chain	Res	Type
1	A	72	HIS
1	A	97	ASN
1	A	103	HIS
2	B	64	HIS
2	B	103	ASN
2	B	140	ASN
2	B	147	HIS
1	C	72	HIS
1	C	97	ASN
1	C	103	HIS
2	D	3	HIS
2	D	64	HIS
2	D	103	ASN
1	I	50	HIS
1	I	72	HIS
1	I	78	ASN
1	I	97	ASN
1	I	103	HIS
2	K	3	HIS
2	K	64	HIS
2	K	81	ASN
2	K	103	ASN
1	M	58	HIS
1	M	72	HIS
1	M	97	ASN
1	M	103	HIS
2	O	64	HIS
2	O	103	ASN
2	O	118	HIS
2	O	140	ASN
2	O	147	HIS

5.3.3 RNA [i](#)

There are no RNA molecules in this entry.

5.4 Non-standard residues in protein, DNA, RNA chains [i](#)

There are no non-standard protein/DNA/RNA residues in this entry.

5.5 Carbohydrates [i](#)

There are no monosaccharides in this entry.

5.6 Ligand geometry [i](#)

8 ligands are modelled in this entry.

In the following table, the Counts columns list the number of bonds (or angles) for which Mogul statistics could be retrieved, the number of bonds (or angles) that are observed in the model and the number of bonds (or angles) that are defined in the Chemical Component Dictionary. The Link column lists molecule types, if any, to which the group is linked. The Z score for a bond length (or angle) is the number of standard deviations the observed value is removed from the expected value. A bond length (or angle) with $|Z| > 2$ is considered an outlier worth inspection. RMSZ is the root-mean-square of all Z scores of the bond lengths (or angles).

Mol	Type	Chain	Res	Link	Bond lengths			Bond angles		
					Counts	RMSZ	# Z > 2	Counts	RMSZ	# Z > 2
3	HEM	M	142	1	41,50,50	2.03	10 (24%)	45,82,82	2.25	10 (22%)
3	HEM	A	142	1	41,50,50	2.02	6 (14%)	45,82,82	2.43	17 (37%)
3	HEM	O	148	2	41,50,50	1.92	8 (19%)	45,82,82	2.11	15 (33%)
3	HEM	B	148	2	41,50,50	1.93	7 (17%)	45,82,82	2.15	14 (31%)
3	HEM	I	142	1	41,50,50	1.72	8 (19%)	45,82,82	2.10	14 (31%)
3	HEM	K	148	2	41,50,50	2.07	11 (26%)	45,82,82	2.00	12 (26%)
3	HEM	D	148	2	41,50,50	2.12	9 (21%)	45,82,82	1.97	8 (17%)
3	HEM	C	142	1	41,50,50	1.81	7 (17%)	45,82,82	2.12	20 (44%)

In the following table, the Chirals column lists the number of chiral outliers, the number of chiral centers analysed, the number of these observed in the model and the number defined in the Chemical Component Dictionary. Similar counts are reported in the Torsion and Rings columns. '-' means no outliers of that kind were identified.

Mol	Type	Chain	Res	Link	Chirals	Torsions	Rings
3	HEM	M	142	1	-	3/12/54/54	-
3	HEM	A	142	1	-	4/12/54/54	-
3	HEM	O	148	2	-	4/12/54/54	-
3	HEM	B	148	2	-	4/12/54/54	-
3	HEM	I	142	1	-	3/12/54/54	-
3	HEM	K	148	2	-	4/12/54/54	-
3	HEM	D	148	2	-	6/12/54/54	-
3	HEM	C	142	1	-	4/12/54/54	-

All (66) bond length outliers are listed below:

Mol	Chain	Res	Type	Atoms	Z	Observed(Å)	Ideal(Å)
3	D	148	HEM	C3D-C2D	8.20	1.54	1.36
3	A	142	HEM	C3D-C2D	7.94	1.53	1.36
3	O	148	HEM	C3D-C2D	7.92	1.53	1.36
3	K	148	HEM	C3D-C2D	7.77	1.53	1.36
3	B	148	HEM	C3D-C2D	7.53	1.52	1.36
3	M	142	HEM	C3D-C2D	7.48	1.52	1.36
3	C	142	HEM	C3D-C2D	6.57	1.50	1.36
3	I	142	HEM	C3D-C2D	5.99	1.49	1.36
3	A	142	HEM	C3C-C2C	-5.92	1.32	1.40
3	M	142	HEM	C3C-C2C	-4.65	1.33	1.40
3	B	148	HEM	C3C-C2C	-4.59	1.34	1.40
3	D	148	HEM	CAB-C3B	4.01	1.58	1.47
3	C	142	HEM	C3C-C2C	-3.95	1.34	1.40
3	M	142	HEM	FE-ND	3.90	2.16	1.96
3	D	148	HEM	FE-NB	3.90	2.16	1.96
3	O	148	HEM	C3C-C2C	-3.87	1.35	1.40
3	I	142	HEM	C3C-CAC	3.85	1.55	1.47
3	B	148	HEM	C3C-CAC	3.78	1.55	1.47
3	C	142	HEM	C3C-CAC	3.57	1.55	1.47
3	K	148	HEM	C1B-NB	-3.54	1.34	1.40
3	D	148	HEM	C3C-CAC	3.48	1.54	1.47
3	K	148	HEM	FE-ND	3.46	2.13	1.96
3	I	142	HEM	C3C-C2C	-3.41	1.35	1.40
3	M	142	HEM	FE-NB	3.41	2.13	1.96
3	O	148	HEM	C3C-CAC	3.39	1.54	1.47
3	K	148	HEM	C3C-C2C	-3.38	1.35	1.40
3	K	148	HEM	FE-NB	3.38	2.13	1.96
3	M	142	HEM	C3C-CAC	3.38	1.54	1.47
3	D	148	HEM	C3C-C2C	-3.35	1.35	1.40

Continued on next page...

Continued from previous page...

Mol	Chain	Res	Type	Atoms	Z	Observed(Å)	Ideal(Å)
3	C	142	HEM	CAB-C3B	3.32	1.56	1.47
3	C	142	HEM	CMB-C2B	3.28	1.57	1.50
3	K	148	HEM	C3C-CAC	3.19	1.54	1.47
3	K	148	HEM	CAA-C2A	3.08	1.56	1.52
3	C	142	HEM	C2C-C1C	3.02	1.49	1.42
3	D	148	HEM	C1B-NB	-2.98	1.35	1.40
3	A	142	HEM	FE-ND	2.92	2.11	1.96
3	K	148	HEM	CAB-C3B	2.86	1.55	1.47
3	I	142	HEM	FE-ND	2.86	2.11	1.96
3	D	148	HEM	CMB-C2B	2.86	1.56	1.50
3	I	142	HEM	CAB-C3B	2.85	1.55	1.47
3	D	148	HEM	CMD-C2D	2.84	1.56	1.50
3	A	142	HEM	CAB-C3B	2.84	1.55	1.47
3	A	142	HEM	C3C-CAC	2.75	1.53	1.47
3	O	148	HEM	FE-ND	2.68	2.10	1.96
3	O	148	HEM	CMB-C2B	2.61	1.56	1.50
3	K	148	HEM	CMB-C2B	2.60	1.56	1.50
3	M	142	HEM	CHA-C4D	2.56	1.41	1.35
3	I	142	HEM	CMB-C2B	2.51	1.56	1.50
3	O	148	HEM	CAB-C3B	2.50	1.54	1.47
3	A	142	HEM	CMB-C2B	2.49	1.56	1.50
3	D	148	HEM	FE-ND	2.46	2.09	1.96
3	B	148	HEM	C1A-CHA	-2.32	1.34	1.41
3	K	148	HEM	CMA-C3A	2.27	1.56	1.51
3	M	142	HEM	CAB-C3B	2.27	1.53	1.47
3	M	142	HEM	CMA-C3A	2.22	1.56	1.51
3	I	142	HEM	C3B-C2B	-2.19	1.32	1.37
3	M	142	HEM	CMB-C2B	2.15	1.55	1.50
3	C	142	HEM	CMD-C2D	2.15	1.55	1.50
3	M	142	HEM	CHC-C4B	-2.07	1.35	1.41
3	O	148	HEM	CMC-C2C	2.07	1.56	1.51
3	B	148	HEM	CMC-C2C	2.06	1.56	1.51
3	K	148	HEM	O1D-CGD	2.04	1.28	1.22
3	B	148	HEM	CAB-C3B	2.03	1.53	1.47
3	B	148	HEM	C3B-C4B	-2.03	1.40	1.44
3	I	142	HEM	O2D-CGD	-2.02	1.24	1.30
3	O	148	HEM	O2D-CGD	-2.01	1.24	1.30

All (110) bond angle outliers are listed below:

Mol	Chain	Res	Type	Atoms	Z	Observed(°)	Ideal(°)
3	M	142	HEM	C4D-ND-C1D	8.85	114.22	105.07

Continued on next page...

Continued from previous page...

Mol	Chain	Res	Type	Atoms	Z	Observed(°)	Ideal(°)
3	A	142	HEM	C4D-ND-C1D	8.19	113.54	105.07
3	D	148	HEM	C4D-ND-C1D	7.05	112.36	105.07
3	K	148	HEM	C4D-ND-C1D	6.85	112.15	105.07
3	B	148	HEM	C4C-CHD-C1D	6.22	130.76	122.56
3	I	142	HEM	C4D-ND-C1D	5.85	111.11	105.07
3	O	148	HEM	C4D-ND-C1D	5.85	111.11	105.07
3	C	142	HEM	C4B-CHC-C1C	5.81	130.23	122.56
3	D	148	HEM	CBA-CAA-C2A	-5.01	104.07	112.62
3	D	148	HEM	C4B-CHC-C1C	4.93	129.07	122.56
3	O	148	HEM	C4C-CHD-C1D	4.80	128.90	122.56
3	I	142	HEM	CMD-C2D-C1D	4.66	132.14	125.04
3	M	142	HEM	CAD-CBD-CGD	-4.61	103.69	113.60
3	K	148	HEM	CBD-CAD-C3D	-4.44	100.30	112.63
3	B	148	HEM	C4D-ND-C1D	4.37	109.58	105.07
3	A	142	HEM	C4B-CHC-C1C	4.28	128.21	122.56
3	I	142	HEM	C4C-CHD-C1D	4.26	128.18	122.56
3	A	142	HEM	CHA-C4D-ND	4.19	129.56	124.38
3	A	142	HEM	CHB-C1B-NB	4.00	129.32	124.38
3	O	148	HEM	CBD-CAD-C3D	-3.96	101.63	112.63
3	M	142	HEM	C4B-CHC-C1C	3.95	127.77	122.56
3	M	142	HEM	C3D-C4D-ND	-3.94	105.78	110.17
3	C	142	HEM	C4C-CHD-C1D	3.92	127.73	122.56
3	B	148	HEM	CBD-CAD-C3D	-3.89	101.82	112.63
3	A	142	HEM	C1B-NB-C4B	3.82	109.02	105.07
3	K	148	HEM	CMD-C2D-C1D	3.73	130.72	125.04
3	K	148	HEM	CBA-CAA-C2A	-3.57	106.52	112.62
3	M	142	HEM	C4C-CHD-C1D	3.55	127.24	122.56
3	C	142	HEM	C4D-ND-C1D	3.52	108.71	105.07
3	A	142	HEM	CHC-C4B-NB	3.46	128.19	124.43
3	B	148	HEM	CMA-C3A-C4A	-3.42	123.21	128.46
3	A	142	HEM	CAD-CBD-CGD	-3.36	106.37	113.60
3	I	142	HEM	CHB-C1B-NB	3.34	128.50	124.38
3	D	148	HEM	CBD-CAD-C3D	-3.33	103.36	112.63
3	C	142	HEM	CMC-C2C-C3C	3.33	130.91	124.68
3	B	148	HEM	CMD-C2D-C1D	3.33	130.11	125.04
3	O	148	HEM	CMC-C2C-C3C	3.33	130.90	124.68
3	M	142	HEM	CHB-C1B-NB	3.32	128.49	124.38
3	B	148	HEM	CHC-C4B-NB	3.30	128.01	124.43
3	B	148	HEM	O1D-CGD-CBD	-3.28	112.54	123.08
3	C	142	HEM	CMD-C2D-C1D	3.27	130.02	125.04
3	D	148	HEM	C1D-C2D-C3D	-3.26	103.53	106.96
3	I	142	HEM	CAD-C3D-C4D	3.23	130.29	124.66

Continued on next page...

Continued from previous page...

Mol	Chain	Res	Type	Atoms	Z	Observed(°)	Ideal(°)
3	A	142	HEM	C3D-C4D-ND	-3.19	106.62	110.17
3	A	142	HEM	CBD-CAD-C3D	-3.18	103.78	112.63
3	C	142	HEM	CAA-CBA-CGA	-3.15	104.94	113.76
3	O	148	HEM	CAD-CBD-CGD	-3.14	106.84	113.60
3	A	142	HEM	CAA-CBA-CGA	-3.13	104.99	113.76
3	D	148	HEM	CHA-C4D-ND	3.08	128.19	124.38
3	B	148	HEM	CMA-C3A-C2A	3.05	130.69	124.94
3	O	148	HEM	C4B-CHC-C1C	2.99	126.50	122.56
3	O	148	HEM	CMA-C3A-C4A	-2.99	123.88	128.46
3	I	142	HEM	CAD-CBD-CGD	-2.93	107.30	113.60
3	O	148	HEM	O2A-CGA-CBA	2.93	123.44	114.03
3	M	142	HEM	C1B-NB-C4B	2.92	108.09	105.07
3	D	148	HEM	C3D-C4D-ND	-2.90	106.94	110.17
3	O	148	HEM	CHB-C1B-NB	2.90	127.96	124.38
3	I	142	HEM	O2A-CGA-CBA	2.87	123.26	114.03
3	B	148	HEM	CMC-C2C-C3C	2.86	130.03	124.68
3	C	142	HEM	CHB-C1B-NB	2.83	127.88	124.38
3	O	148	HEM	O1A-CGA-CBA	-2.83	114.00	123.08
3	I	142	HEM	CHC-C4B-NB	2.81	127.49	124.43
3	K	148	HEM	C4C-CHD-C1D	2.78	126.23	122.56
3	C	142	HEM	CHC-C4B-NB	2.76	127.43	124.43
3	K	148	HEM	C1B-NB-C4B	2.76	107.92	105.07
3	O	148	HEM	CMA-C3A-C2A	2.73	130.08	124.94
3	I	142	HEM	CMC-C2C-C3C	2.70	129.74	124.68
3	B	148	HEM	CHB-C1B-NB	2.69	127.70	124.38
3	C	142	HEM	CAD-C3D-C4D	2.67	129.32	124.66
3	O	148	HEM	CMD-C2D-C1D	2.65	129.08	125.04
3	I	142	HEM	CAD-C3D-C2D	-2.64	122.95	127.88
3	B	148	HEM	CAA-CBA-CGA	-2.64	106.36	113.76
3	M	142	HEM	CAA-CBA-CGA	-2.64	106.37	113.76
3	K	148	HEM	C1D-C2D-C3D	-2.62	104.20	106.96
3	I	142	HEM	CBD-CAD-C3D	-2.60	105.40	112.63
3	C	142	HEM	O1D-CGD-CBD	-2.60	114.73	123.08
3	A	142	HEM	CMD-C2D-C1D	2.60	128.99	125.04
3	C	142	HEM	C4B-C3B-C2B	2.58	109.16	107.11
3	A	142	HEM	O1D-CGD-CBD	-2.56	114.85	123.08
3	K	148	HEM	O2A-CGA-CBA	2.54	122.19	114.03
3	B	148	HEM	CBB-CAB-C3B	-2.53	115.03	127.62
3	A	142	HEM	C4C-CHD-C1D	2.50	125.86	122.56
3	C	142	HEM	C1D-C2D-C3D	-2.49	104.34	106.96
3	O	148	HEM	CBB-CAB-C3B	-2.47	115.33	127.62
3	A	142	HEM	C2D-C1D-ND	-2.47	106.93	109.88

Continued on next page...

Continued from previous page...

Mol	Chain	Res	Type	Atoms	Z	Observed(°)	Ideal(°)
3	K	148	HEM	O1A-CGA-CBA	-2.39	115.41	123.08
3	A	142	HEM	CMB-C2B-C1B	-2.38	121.41	125.04
3	O	148	HEM	CHC-C4B-NB	2.33	126.96	124.43
3	C	142	HEM	CHA-C4D-ND	2.32	127.25	124.38
3	I	142	HEM	CMA-C3A-C4A	-2.31	124.91	128.46
3	D	148	HEM	CMA-C3A-C4A	-2.29	124.94	128.46
3	C	142	HEM	O2D-CGD-CBD	2.27	121.33	114.03
3	C	142	HEM	C2C-C3C-C4C	-2.26	105.32	106.90
3	A	142	HEM	O2D-CGD-CBD	2.23	121.19	114.03
3	K	148	HEM	C4A-C3A-C2A	-2.21	105.45	107.00
3	C	142	HEM	O2A-CGA-CBA	2.20	121.10	114.03
3	B	148	HEM	CHC-C4B-C3B	-2.20	121.21	124.57
3	I	142	HEM	CMA-C3A-C2A	2.19	129.07	124.94
3	K	148	HEM	CHA-C4D-ND	2.17	127.06	124.38
3	B	148	HEM	O2D-CGD-CBD	2.16	120.97	114.03
3	M	142	HEM	C2D-C1D-ND	-2.15	107.30	109.88
3	M	142	HEM	CHA-C4D-ND	2.14	127.02	124.38
3	I	142	HEM	O2A-CGA-O1A	-2.11	118.03	123.30
3	O	148	HEM	CAD-C3D-C4D	2.10	128.32	124.66
3	C	142	HEM	CHB-C1B-C2B	-2.07	120.98	126.72
3	A	142	HEM	C3C-C4C-NC	-2.03	107.10	110.94
3	K	148	HEM	CBB-CAB-C3B	-2.03	117.52	127.62
3	C	142	HEM	CBD-CAD-C3D	-2.03	106.99	112.63
3	C	142	HEM	CHD-C1D-ND	2.02	126.62	124.43
3	C	142	HEM	C1B-NB-C4B	2.01	107.14	105.07

There are no chirality outliers.

All (32) torsion outliers are listed below:

Mol	Chain	Res	Type	Atoms
3	D	148	HEM	C2B-C3B-CAB-CBB
3	D	148	HEM	C4B-C3B-CAB-CBB
3	B	148	HEM	C2A-CAA-CBA-CGA
3	B	148	HEM	C3A-C2A-CAA-CBA
3	C	142	HEM	CAD-CBD-CGD-O1D
3	A	142	HEM	CAD-CBD-CGD-O1D
3	O	148	HEM	CAA-CBA-CGA-O1A
3	C	142	HEM	CAA-CBA-CGA-O1A
3	M	142	HEM	CAD-CBD-CGD-O2D
3	I	142	HEM	CAD-CBD-CGD-O1D
3	K	148	HEM	CAA-CBA-CGA-O1A
3	M	142	HEM	CAD-CBD-CGD-O1D

Continued on next page...

Continued from previous page...

Mol	Chain	Res	Type	Atoms
3	D	148	HEM	CAA-CBA-CGA-O1A
3	O	148	HEM	CAD-CBD-CGD-O2D
3	C	142	HEM	CAA-CBA-CGA-O2A
3	D	148	HEM	CAA-CBA-CGA-O2A
3	A	142	HEM	CAD-CBD-CGD-O2D
3	A	142	HEM	CAA-CBA-CGA-O1A
3	A	142	HEM	CAA-CBA-CGA-O2A
3	C	142	HEM	CAD-CBD-CGD-O2D
3	O	148	HEM	CAA-CBA-CGA-O2A
3	I	142	HEM	CAD-CBD-CGD-O2D
3	D	148	HEM	CAD-CBD-CGD-O2D
3	K	148	HEM	CAA-CBA-CGA-O2A
3	D	148	HEM	CAD-CBD-CGD-O1D
3	O	148	HEM	CAD-CBD-CGD-O1D
3	K	148	HEM	CAD-CBD-CGD-O1D
3	M	142	HEM	C4B-C3B-CAB-CBB
3	I	142	HEM	CAA-CBA-CGA-O1A
3	K	148	HEM	CAD-CBD-CGD-O2D
3	B	148	HEM	CAD-CBD-CGD-O2D
3	B	148	HEM	CAD-CBD-CGD-O1D

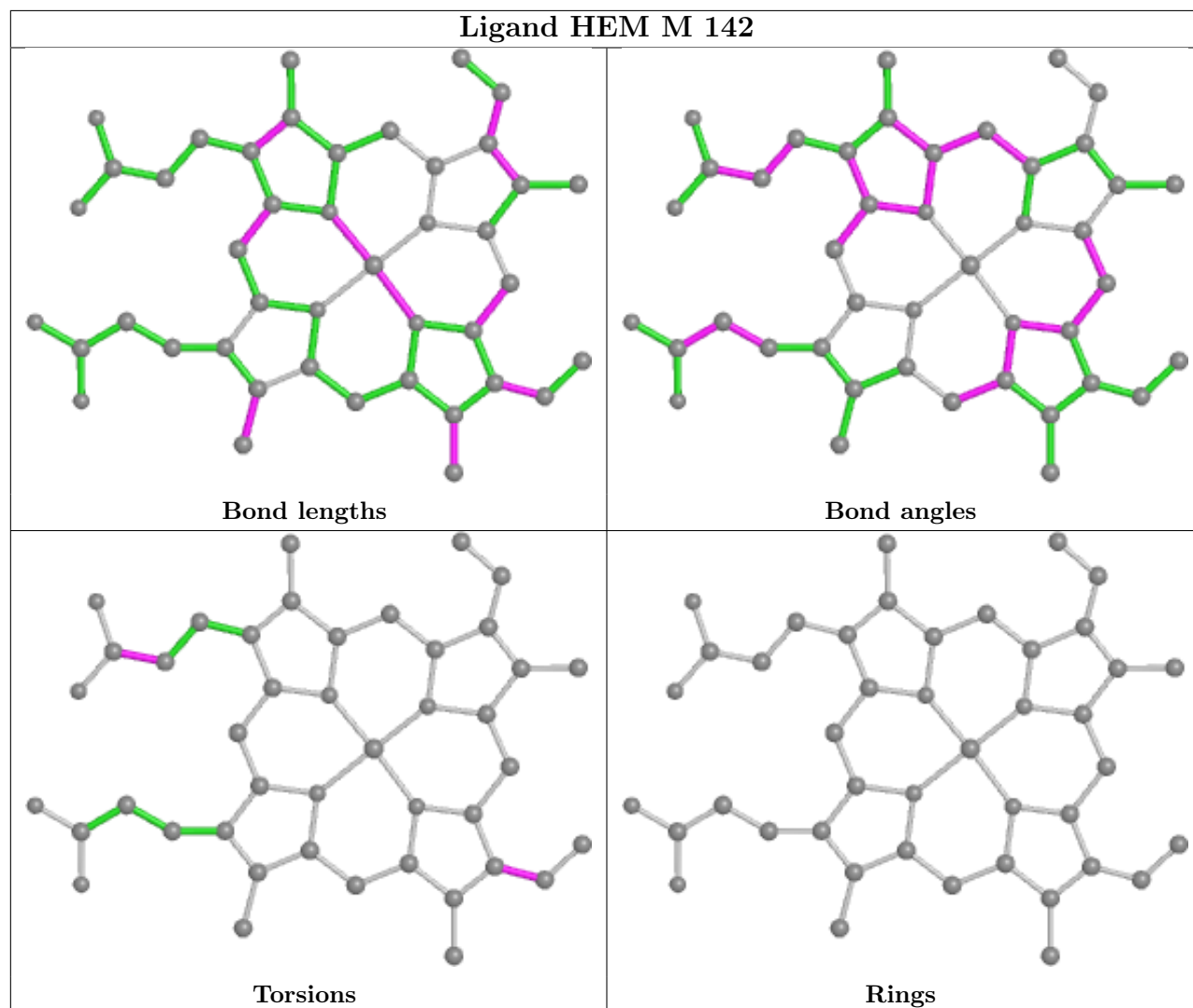
There are no ring outliers.

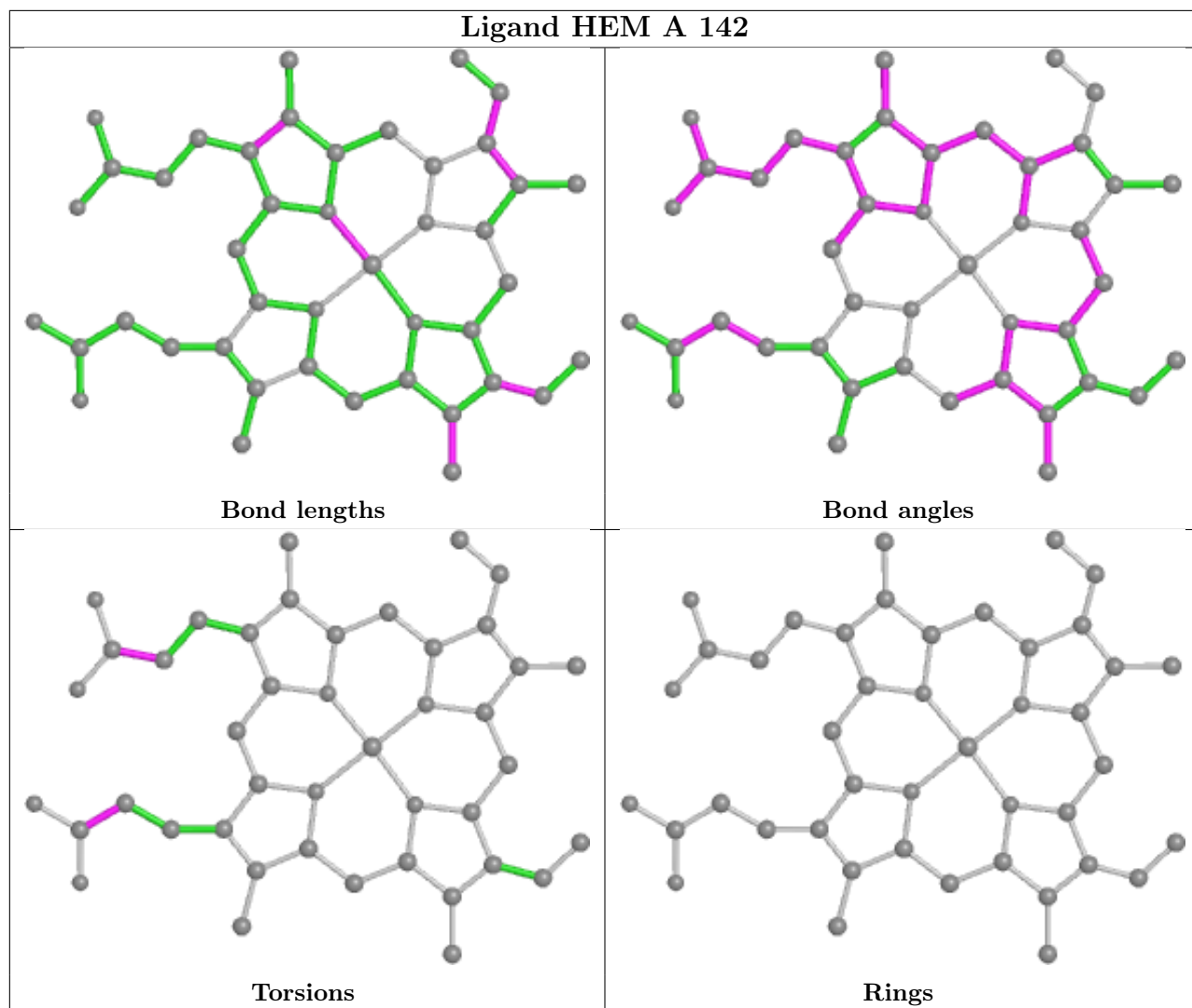
7 monomers are involved in 20 short contacts:

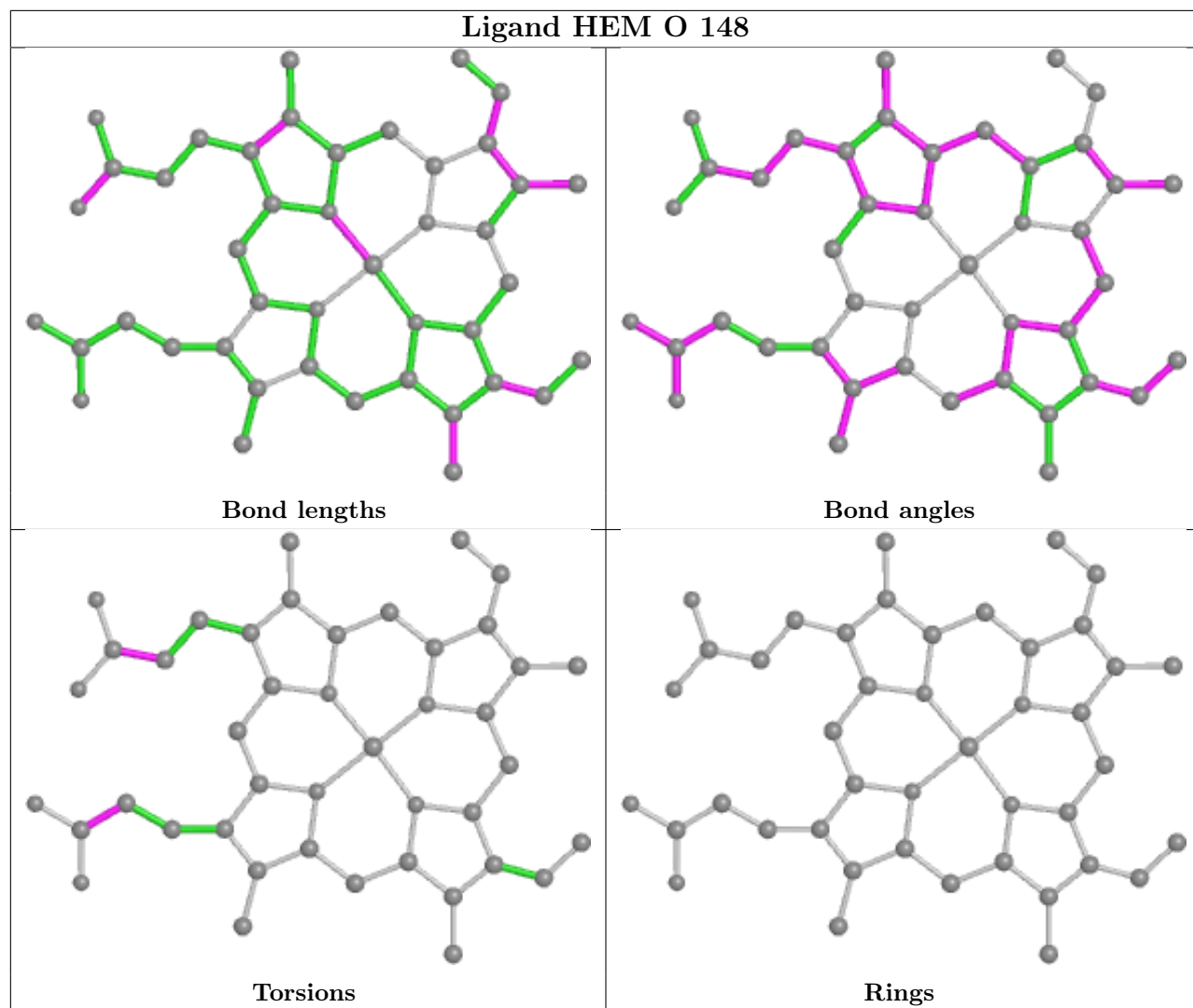
Mol	Chain	Res	Type	Clashes	Symm-Clashes
3	M	142	HEM	2	0
3	A	142	HEM	4	0
3	O	148	HEM	2	0
3	B	148	HEM	3	0
3	K	148	HEM	2	0
3	D	148	HEM	5	0
3	C	142	HEM	2	0

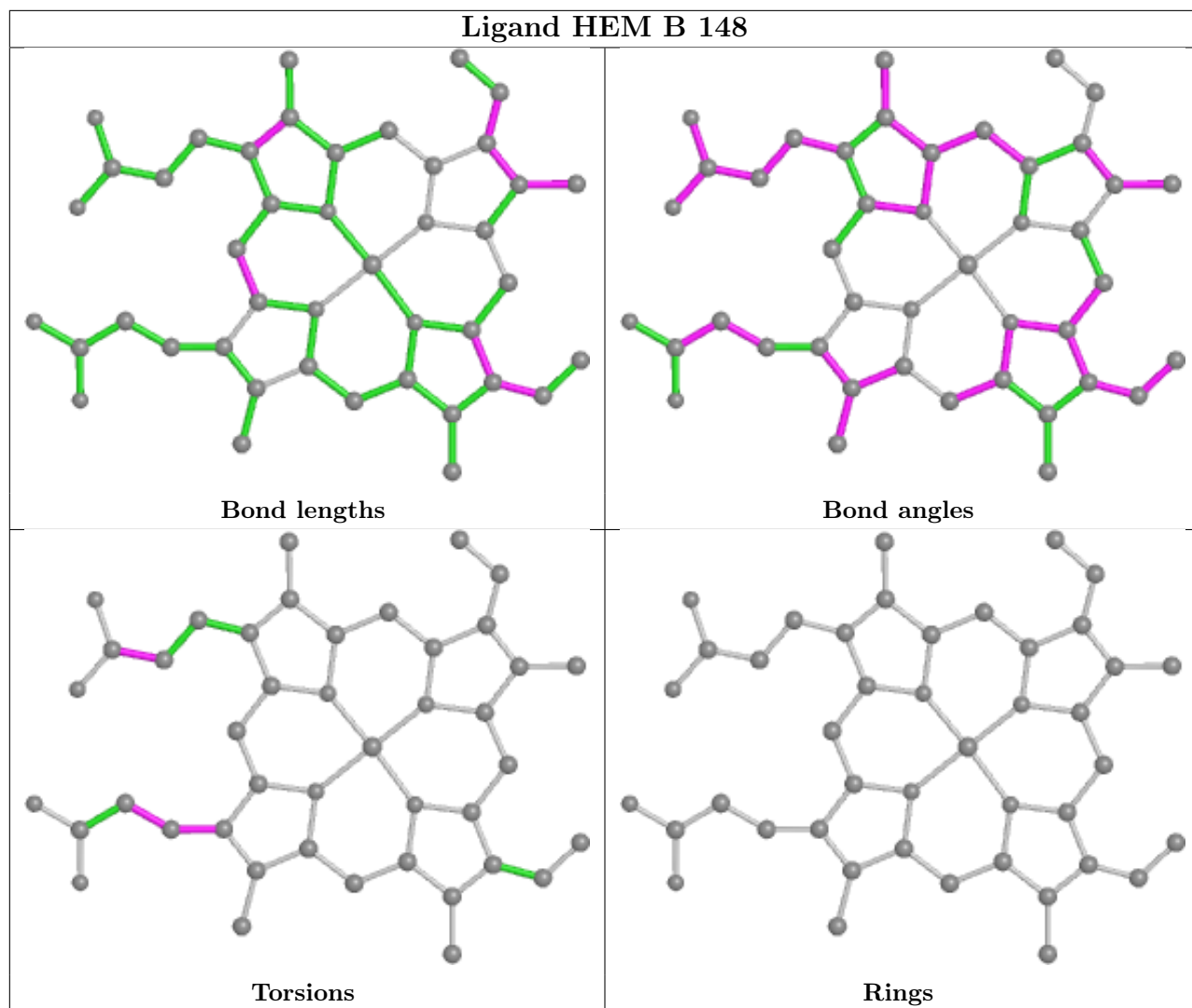
The following is a two-dimensional graphical depiction of Mogul quality analysis of bond lengths, bond angles, torsion angles, and ring geometry for all instances of the Ligand of Interest. In addition, ligands with molecular weight > 250 and outliers as shown on the validation Tables will also be included. For torsion angles, if less than 5% of the Mogul distribution of torsion angles is within 10 degrees of the torsion angle in question, then that torsion angle is considered an outlier. Any bond that is central to one or more torsion angles identified as an outlier by Mogul will be highlighted in the graph. For rings, the root-mean-square deviation (RMSD) between the ring in question and similar rings identified by Mogul is calculated over all ring torsion angles. If the average RMSD is greater than 60 degrees and the minimal RMSD between the ring in question and

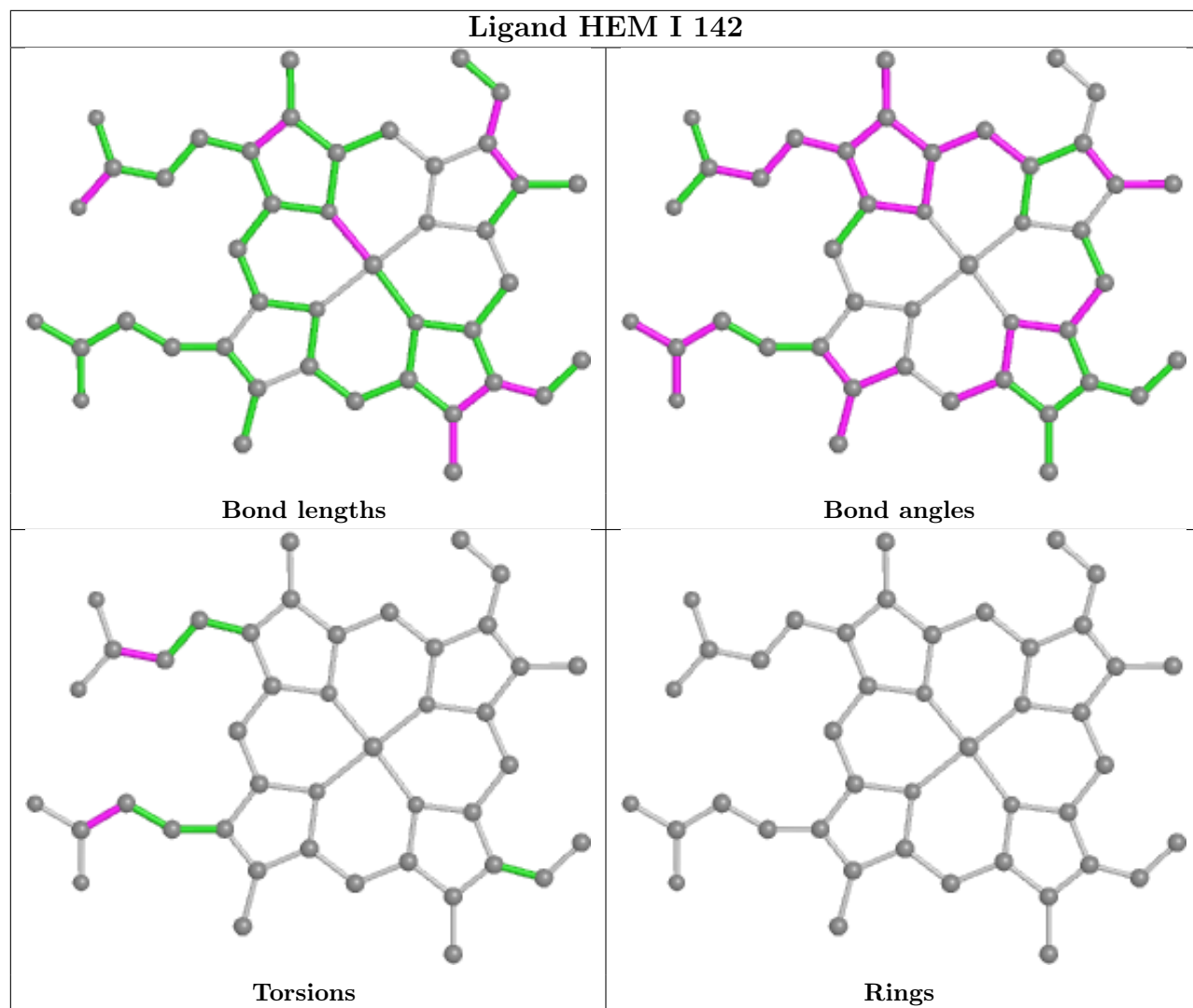
any Mogul-identified rings is also greater than 60 degrees, then that ring is considered an outlier. The outliers are highlighted in purple. The color gray indicates Mogul did not find sufficient equivalents in the CSD to analyse the geometry.

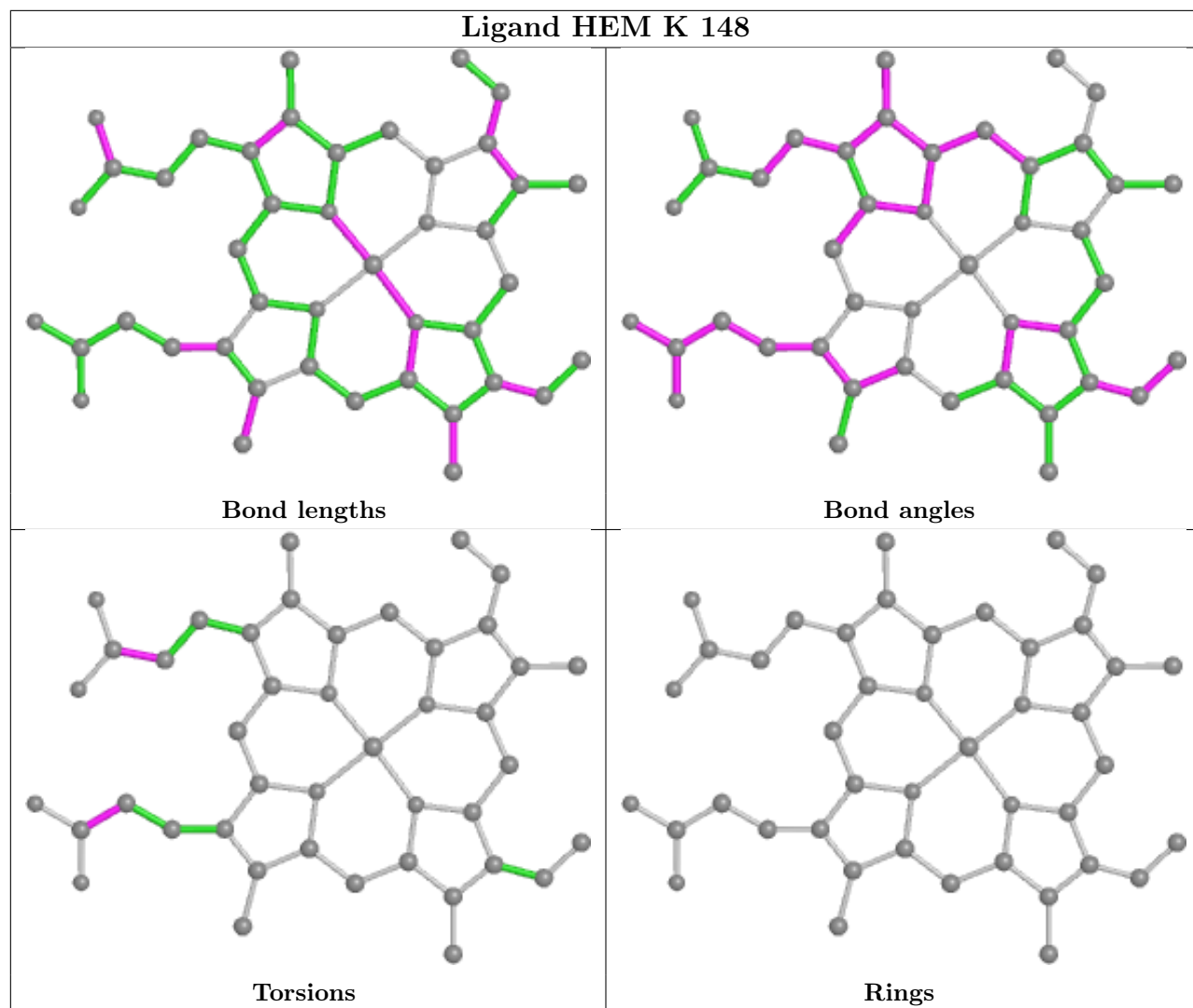


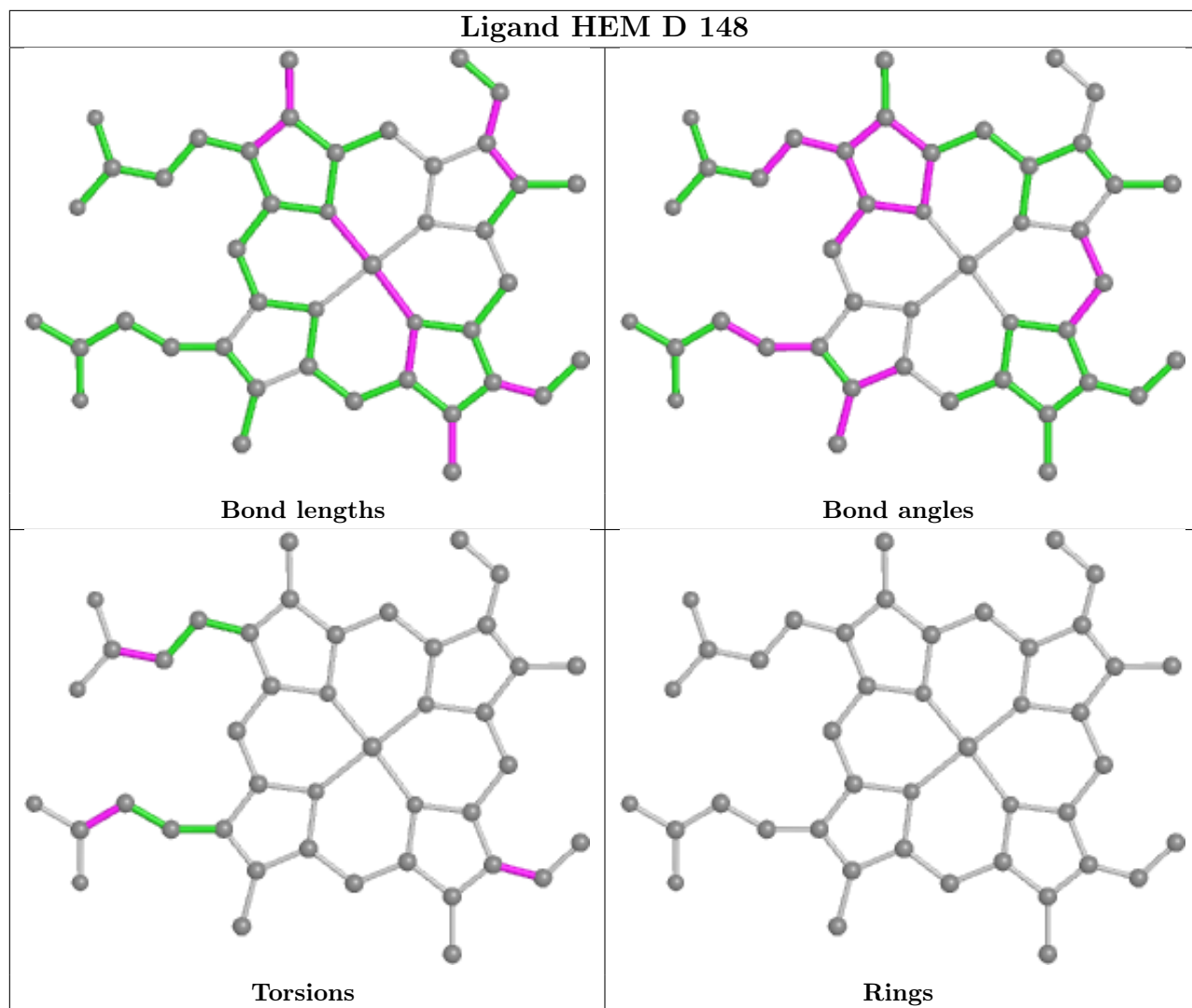


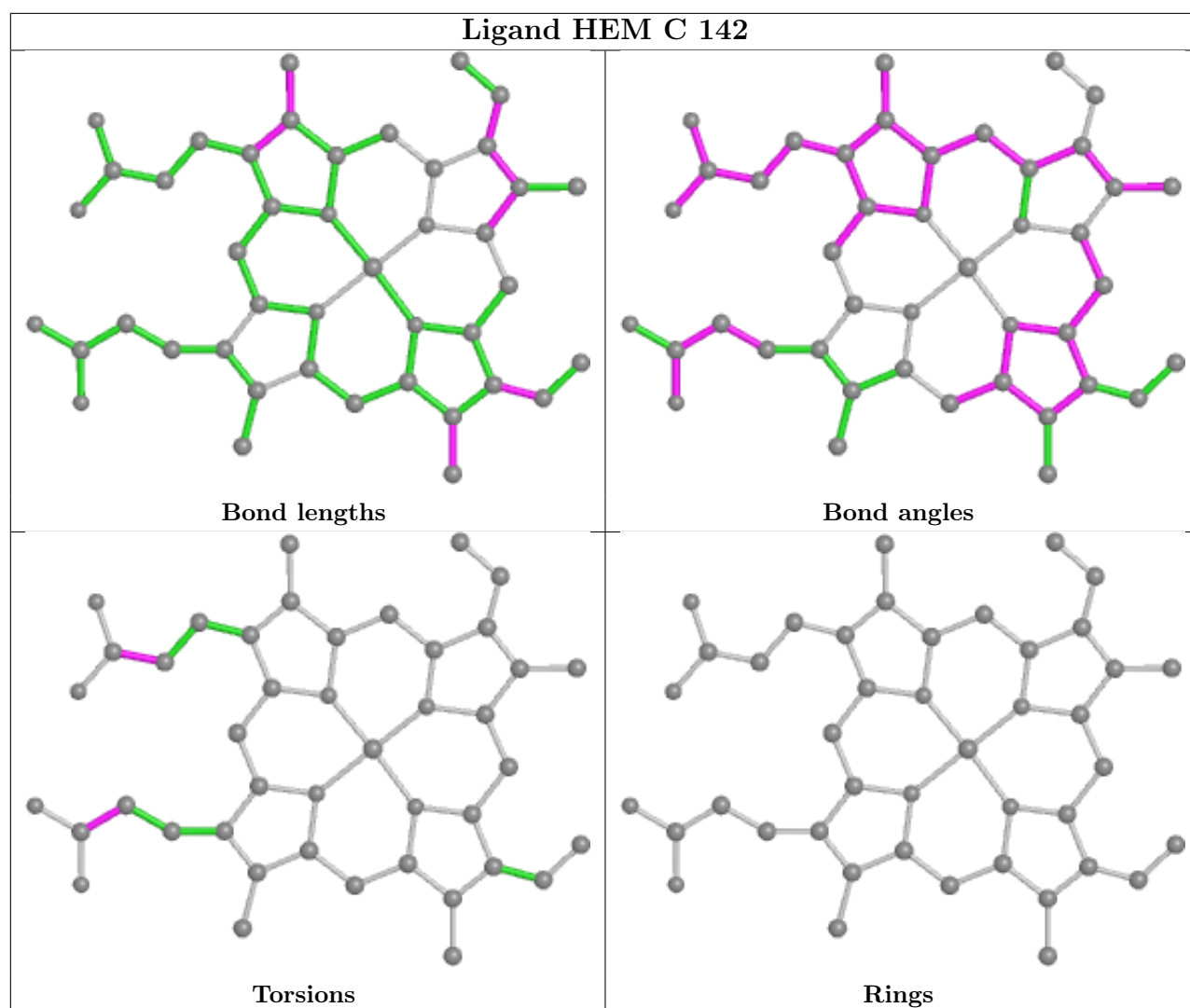












5.7 Other polymers [i](#)

There are no such residues in this entry.

5.8 Polymer linkage issues [i](#)

There are no chain breaks in this entry.

6 Fit of model and data [i](#)

6.1 Protein, DNA and RNA chains [i](#)

In the following table, the column labelled ‘#RSRZ > 2’ contains the number (and percentage) of RSRZ outliers, followed by percent RSRZ outliers for the chain as percentile scores relative to all X-ray entries and entries of similar resolution. The OWAB column contains the minimum, median, 95th percentile and maximum values of the occupancy-weighted average B-factor per residue. The column labelled ‘Q < 0.9’ lists the number of (and percentage) of residues with an average occupancy less than 0.9.

Mol	Chain	Analysed	<RSRZ>	#RSRZ>2	OWAB(Å ²)	Q<0.9
1	A	141/141 (100%)	-0.38	1 (0%) 87 91	14, 29, 49, 62	0
1	C	141/141 (100%)	-0.57	1 (0%) 87 91	9, 17, 36, 45	0
1	I	141/141 (100%)	-0.60	1 (0%) 87 91	7, 18, 39, 47	0
1	M	141/141 (100%)	-0.42	2 (1%) 75 80	10, 28, 48, 62	0
2	B	146/146 (100%)	-0.59	0 100 100	9, 23, 41, 46	0
2	D	146/146 (100%)	-0.48	2 (1%) 75 80	9, 27, 46, 70	0
2	K	146/146 (100%)	-0.45	0 100 100	8, 28, 46, 55	0
2	O	146/146 (100%)	-0.49	2 (1%) 75 80	7, 24, 42, 56	0
All	All	1148/1148 (100%)	-0.50	9 (0%) 86 89	7, 24, 45, 70	0

All (9) RSRZ outliers are listed below:

Mol	Chain	Res	Type	RSRZ
2	D	3	HIS	3.9
1	I	1	VAL	3.0
1	M	1	VAL	2.7
2	O	2	VAL	2.5
2	D	2	VAL	2.4
2	O	3	HIS	2.3
1	A	50	HIS	2.2
1	C	1	VAL	2.2
1	M	50	HIS	2.1

6.2 Non-standard residues in protein, DNA, RNA chains [i](#)

There are no non-standard protein/DNA/RNA residues in this entry.

6.3 Carbohydrates [i](#)

There are no monosaccharides in this entry.

6.4 Ligands [i](#)

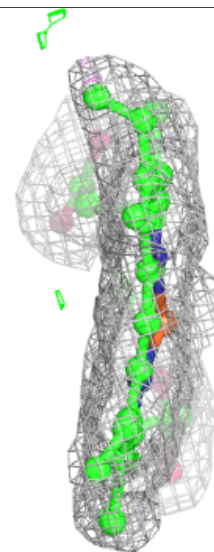
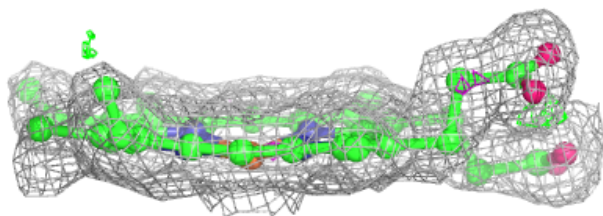
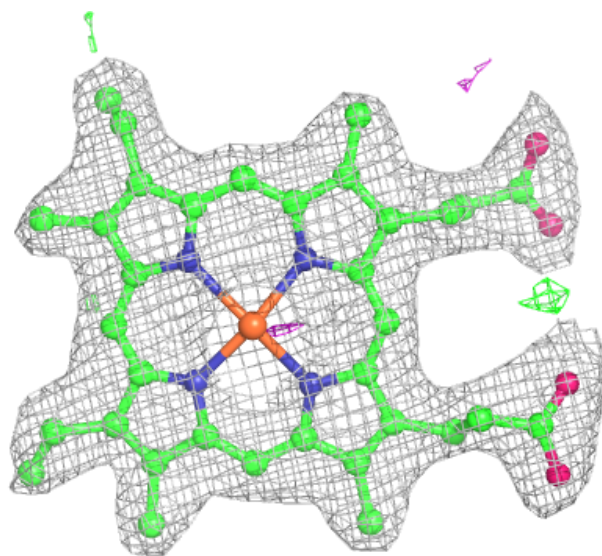
In the following table, the Atoms column lists the number of modelled atoms in the group and the number defined in the chemical component dictionary. The B-factors column lists the minimum, median, 95th percentile and maximum values of B factors of atoms in the group. The column labelled 'Q< 0.9' lists the number of atoms with occupancy less than 0.9.

Mol	Type	Chain	Res	Atoms	RSCC	RSR	B-factors(Å ²)	Q<0.9
3	HEM	A	142	43/43	0.96	0.10	21,28,38,44	0
3	HEM	C	142	43/43	0.97	0.11	4,14,29,42	0
3	HEM	D	148	43/43	0.97	0.11	19,29,39,45	0
3	HEM	K	148	43/43	0.97	0.11	22,27,38,42	0
3	HEM	M	142	43/43	0.97	0.10	19,26,33,36	0
3	HEM	B	148	43/43	0.98	0.10	7,15,36,41	0
3	HEM	I	142	43/43	0.98	0.09	10,14,27,35	0
3	HEM	O	148	43/43	0.98	0.10	11,15,36,39	0

The following is a graphical depiction of the model fit to experimental electron density of all instances of the Ligand of Interest. In addition, ligands with molecular weight > 250 and outliers as shown on the geometry validation Tables will also be included. Each fit is shown from different orientation to approximate a three-dimensional view.

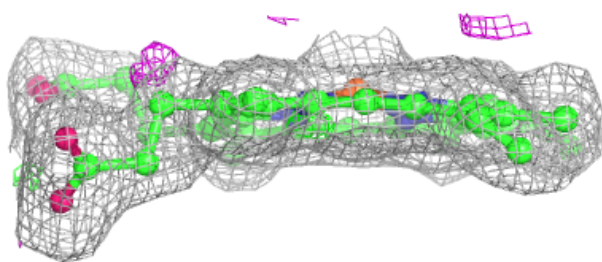
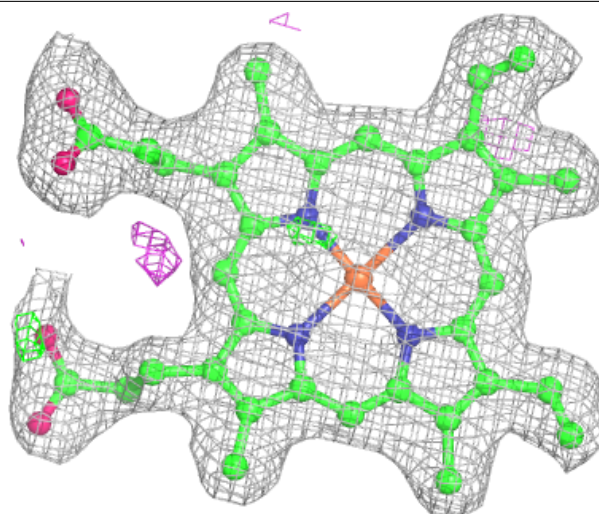
Electron density around HEM A 142:

$2mF_o-DF_c$ (at 0.7 rmsd) in gray
 mF_o-DF_c (at 3 rmsd) in purple (negative)
and green (positive)



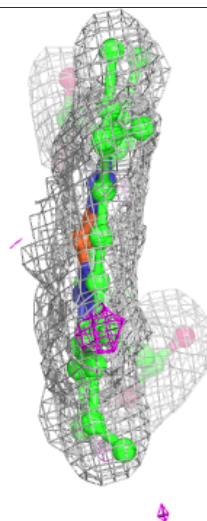
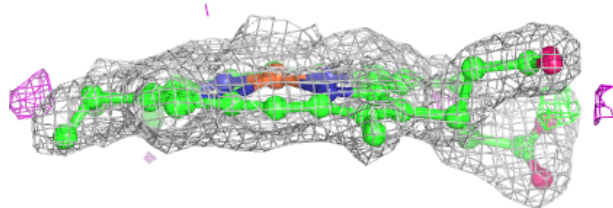
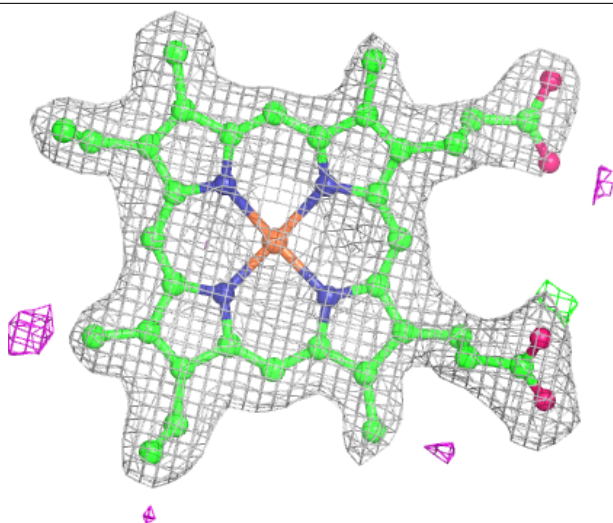
Electron density around HEM C 142:

$2mF_o-DF_c$ (at 0.7 rmsd) in gray
 mF_o-DF_c (at 3 rmsd) in purple (negative)
and green (positive)



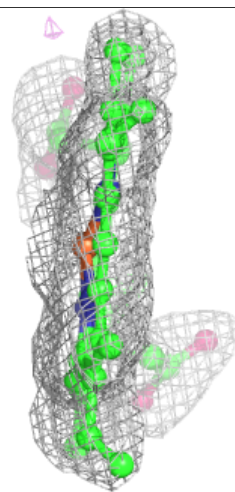
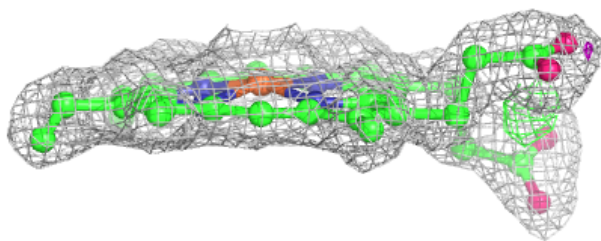
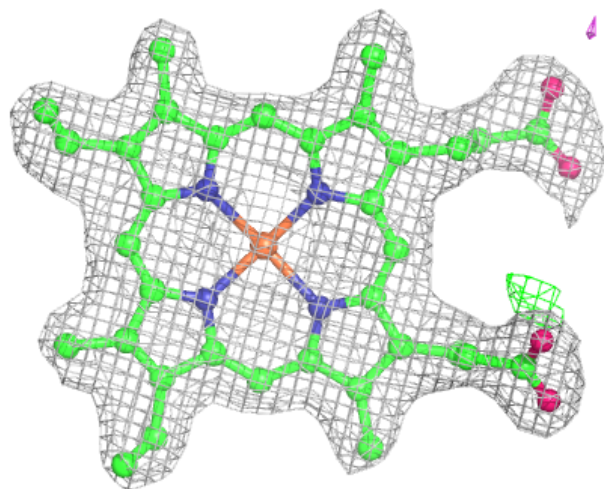
Electron density around HEM D 148:

$2mF_o-DF_c$ (at 0.7 rmsd) in gray
 mF_o-DF_c (at 3 rmsd) in purple (negative)
and green (positive)



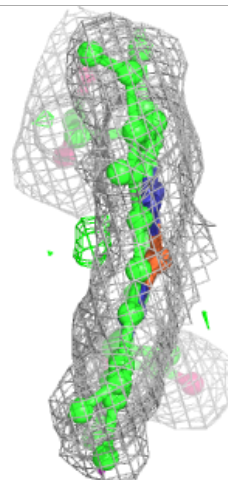
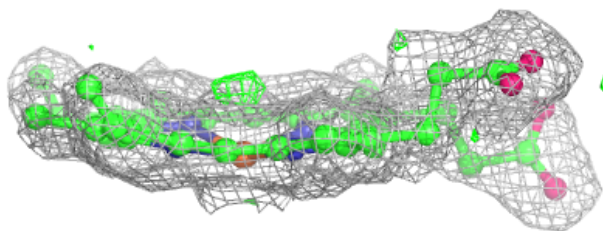
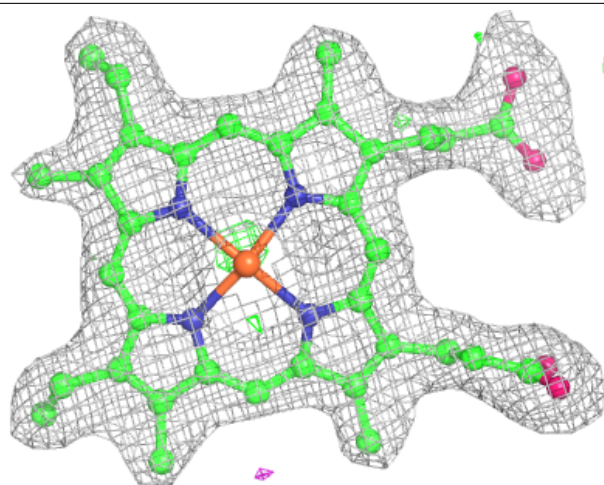
Electron density around HEM K 148:

$2mF_o-DF_c$ (at 0.7 rmsd) in gray
 mF_o-DF_c (at 3 rmsd) in purple (negative)
and green (positive)



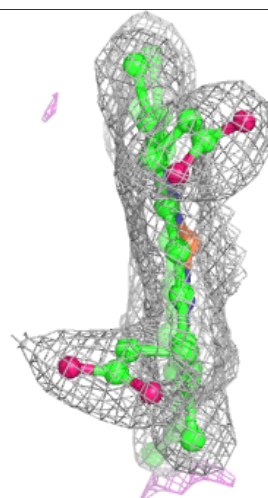
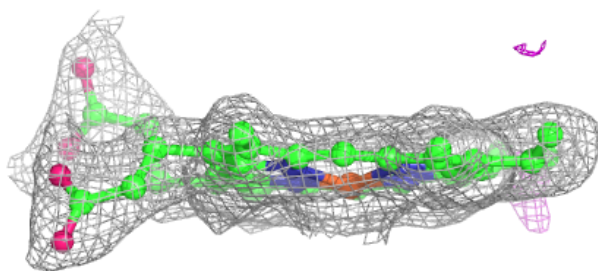
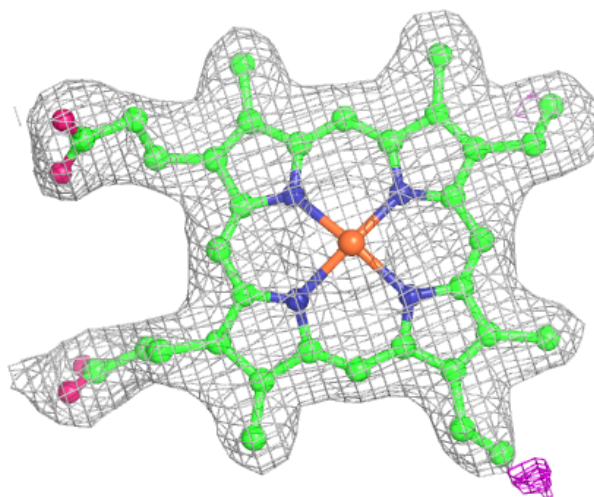
Electron density around HEM M 142:

$2mF_o-DF_c$ (at 0.7 rmsd) in gray
 mF_o-DF_c (at 3 rmsd) in purple (negative)
and green (positive)



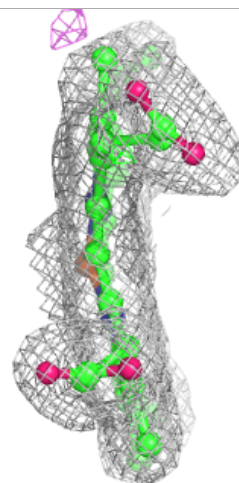
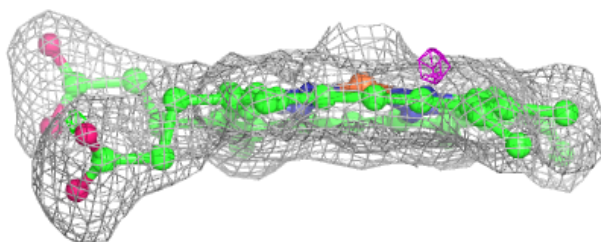
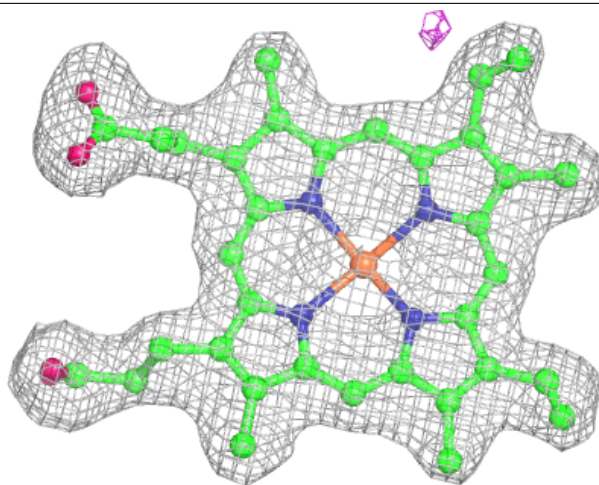
Electron density around HEM B 148:

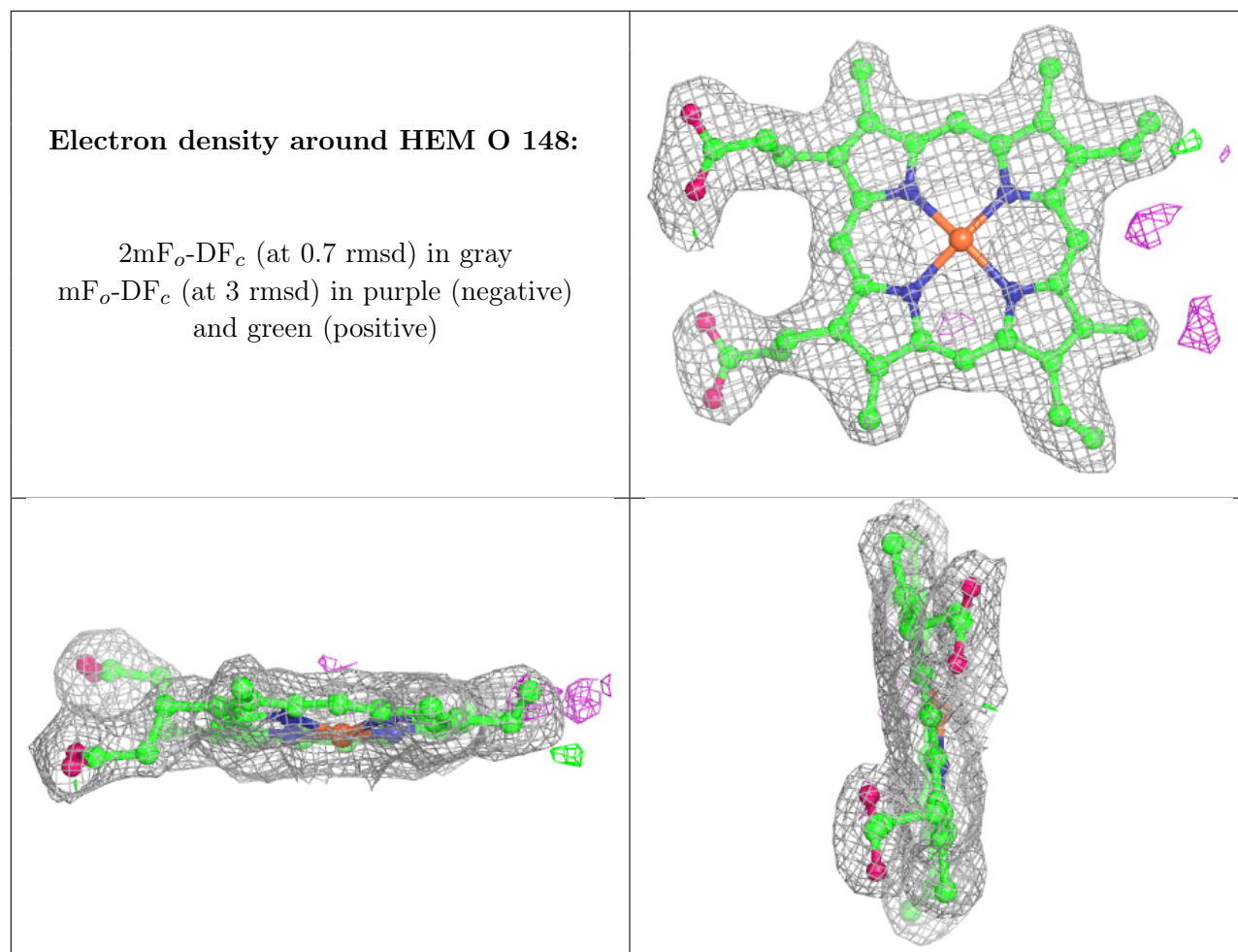
$2mF_o-DF_c$ (at 0.7 rmsd) in gray
 mF_o-DF_c (at 3 rmsd) in purple (negative)
and green (positive)



Electron density around HEM I 142:

$2mF_o-DF_c$ (at 0.7 rmsd) in gray
 mF_o-DF_c (at 3 rmsd) in purple (negative)
and green (positive)





6.5 Other polymers [i](#)

There are no such residues in this entry.