



# Full wwPDB X-ray Structure Validation Report ⓘ

Dec 10, 2023 – 11:12 pm GMT

PDB ID : 2W8G  
Title : Aplysia californica AChBP bound to in silico compound 35  
Authors : Ulens, C.; Akdemir, A.; Jongejan, A.; van Elk, R.; Edink, E.; Bertrand, S.;  
Perrakis, A.; Leurs, R.; Smit, A.B.; Sixma, T.K.; Bertrand, D.; de Esch, I.J.  
Deposited on : 2009-01-16  
Resolution : 2.60 Å(reported)

This is a Full wwPDB X-ray Structure Validation Report for a publicly released PDB entry.

We welcome your comments at [validation@mail.wwpdb.org](mailto:validation@mail.wwpdb.org)

A user guide is available at

<https://www.wwpdb.org/validation/2017/XrayValidationReportHelp>

with specific help available everywhere you see the ⓘ symbol.

The types of validation reports are described at

<http://www.wwpdb.org/validation/2017/FAQs#types>.

---

The following versions of software and data (see [references ⓘ](#)) were used in the production of this report:

MolProbity : 4.02b-467  
Mogul : 1.8.4, CSD as541be (2020)  
Xtriage (Phenix) : 1.13  
EDS : 2.36  
buster-report : 1.1.7 (2018)  
Percentile statistics : 20191225.v01 (using entries in the PDB archive December 25th 2019)  
Refmac : 5.8.0158  
CCP4 : 7.0.044 (Gargrove)  
Ideal geometry (proteins) : Engh & Huber (2001)  
Ideal geometry (DNA, RNA) : Parkinson et al. (1996)  
Validation Pipeline (wwPDB-VP) : 2.36

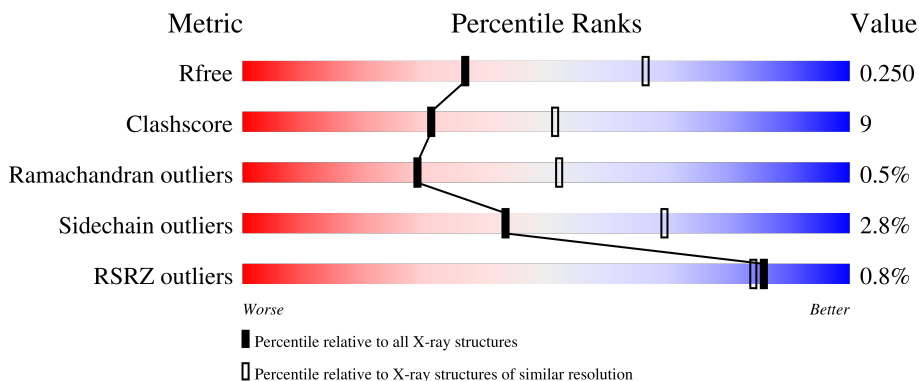
# 1 Overall quality at a glance

The following experimental techniques were used to determine the structure:

*X-RAY DIFFRACTION*

The reported resolution of this entry is 2.60 Å.

Percentile scores (ranging between 0-100) for global validation metrics of the entry are shown in the following graphic. The table shows the number of entries on which the scores are based.



Metric	Whole archive (#Entries)	Similar resolution (#Entries, resolution range(Å))
$R_{free}$	130704	3163 (2.60-2.60)
Clashscore	141614	3518 (2.60-2.60)
Ramachandran outliers	138981	3455 (2.60-2.60)
Sidechain outliers	138945	3455 (2.60-2.60)
RSRZ outliers	127900	3104 (2.60-2.60)

The table below summarises the geometric issues observed across the polymeric chains and their fit to the electron density. The red, orange, yellow and green segments of the lower bar indicate the fraction of residues that contain outliers for  $\geq 3$ , 2, 1 and 0 types of geometric quality criteria respectively. A grey segment represents the fraction of residues that are not modelled. The numeric value for each fraction is indicated below the corresponding segment, with a dot representing fractions  $\leq 5\%$ . The upper red bar (where present) indicates the fraction of residues that have poor fit to the electron density. The numeric value is given above the bar.

Mol	Chain	Length	Quality of chain
1	A	217	
1	B	217	
1	C	217	
1	D	217	
1	E	217	

## 2 Entry composition [i](#)

There are 3 unique types of molecules in this entry. The entry contains 8633 atoms, of which 0 are hydrogens and 0 are deuteriums.

In the tables below, the ZeroOcc column contains the number of atoms modelled with zero occupancy, the AltConf column contains the number of residues with at least one atom in alternate conformation and the Trace column contains the number of residues modelled with at most 2 atoms.

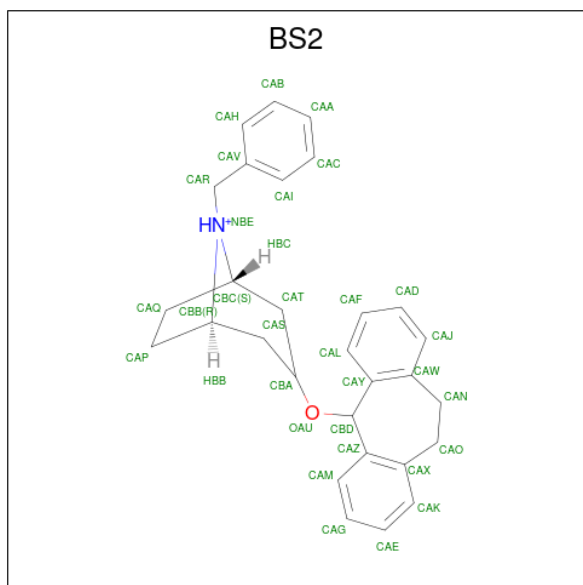
- Molecule 1 is a protein called SOLUBLE ACETYLCHOLINE RECEPTOR.

Mol	Chain	Residues	Atoms					ZeroOcc	AltConf	Trace
			Total	C	N	O	S			
1	A	205	Total 1636	C 1036	N 266	O 325	S 9	0	0	0
1	B	205	Total 1636	C 1036	N 266	O 325	S 9	0	0	0
1	C	217	Total 1737	C 1100	N 286	O 342	S 9	0	0	0
1	D	205	Total 1636	C 1036	N 266	O 325	S 9	0	0	0
1	E	205	Total 1636	C 1036	N 266	O 325	S 9	0	0	0

There are 10 discrepancies between the modelled and reference sequences:

Chain	Residue	Modelled	Actual	Comment	Reference
A	41	VAL	ALA	conflict	UNP Q8WSF8
A	136	VAL	ALA	conflict	UNP Q8WSF8
B	41	VAL	ALA	conflict	UNP Q8WSF8
B	136	VAL	ALA	conflict	UNP Q8WSF8
C	41	VAL	ALA	conflict	UNP Q8WSF8
C	136	VAL	ALA	conflict	UNP Q8WSF8
D	41	VAL	ALA	conflict	UNP Q8WSF8
D	136	VAL	ALA	conflict	UNP Q8WSF8
E	41	VAL	ALA	conflict	UNP Q8WSF8
E	136	VAL	ALA	conflict	UNP Q8WSF8

- Molecule 2 is (3-ENDO,8-ANTI)-8-BENZYL-3-(10,11-DIHYDRO-5H-DIBENZO[A,D][7]ANNULEN-5-YLOXY)-8-AZONIABICYCLO[3.2.1]OCTANE (three-letter code: BS2) (formula: C<sub>29</sub>H<sub>32</sub>NO).



Mol	Chain	Residues	Atoms				ZeroOcc	AltConf
2	A	1	Total	C	N	O	0	0
			31	29	1	1		
2	D	1	Total	C	N	O	0	0
			31	29	1	1		
2	E	1	Total	C	N	O	0	0
			31	29	1	1		

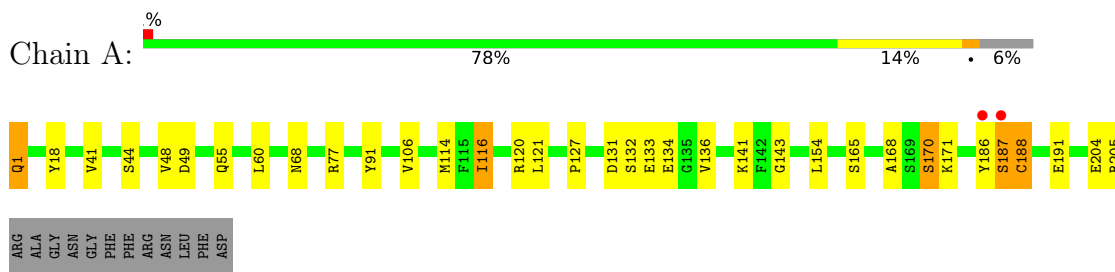
- Molecule 3 is water.

Mol	Chain	Residues	Atoms		ZeroOcc	AltConf
3	A	48	Total	O	0	0
			48	48		
3	B	41	Total	O	0	0
			41	41		
3	C	64	Total	O	0	0
			64	64		
3	D	54	Total	O	0	0
			54	54		
3	E	52	Total	O	0	0
			52	52		

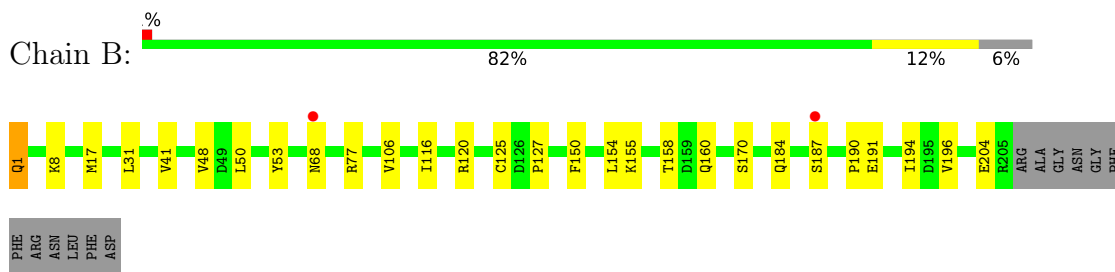
### 3 Residue-property plots [i](#)

These plots are drawn for all protein, RNA, DNA and oligosaccharide chains in the entry. The first graphic for a chain summarises the proportions of the various outlier classes displayed in the second graphic. The second graphic shows the sequence view annotated by issues in geometry and electron density. Residues are color-coded according to the number of geometric quality criteria for which they contain at least one outlier: green = 0, yellow = 1, orange = 2 and red = 3 or more. A red dot above a residue indicates a poor fit to the electron density ( $RSRZ > 2$ ). Stretches of 2 or more consecutive residues without any outlier are shown as a green connector. Residues present in the sample, but not in the model, are shown in grey.

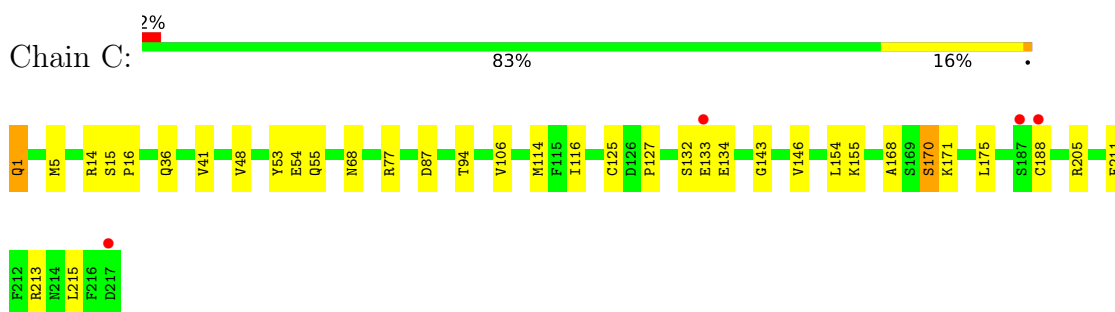
- Molecule 1: SOLUBLE ACETYLCHOLINE RECEPTOR



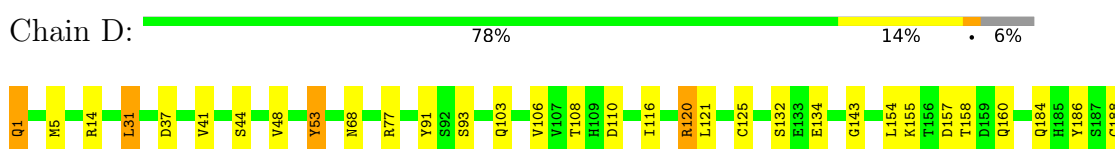
- Molecule 1: SOLUBLE ACETYLCHOLINE RECEPTOR

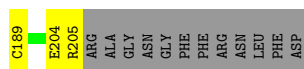


- Molecule 1: SOLUBLE ACETYLCHOLINE RECEPTOR




- Molecule 1: SOLUBLE ACETYLCHOLINE RECEPTOR





- Molecule 1: SOLUBLE ACETYLCHOLINE RECEPTOR

Chain E:  84% 10% • 6%



## 4 Data and refinement statistics

Property	Value	Source
Space group	C 2 2 21	Depositor
Cell constants a, b, c, $\alpha$ , $\beta$ , $\gamma$	134.51Å 173.63Å 129.12Å 90.00° 90.00° 90.00°	Depositor
Resolution (Å)	106.60 – 2.60 86.81 – 2.60	Depositor EDS
% Data completeness (in resolution range)	87.0 (106.60-2.60) 87.0 (86.81-2.60)	Depositor EDS
$R_{merge}$	(Not available)	Depositor
$R_{sym}$	0.12	Depositor
$\langle I/\sigma(I) \rangle$ <sup>1</sup>	1.81 (at 2.62Å)	Xtrriage
Refinement program	REFMAC 5.2.0019	Depositor
R, $R_{free}$	0.200 , 0.250 0.199 , 0.250	Depositor DCC
$R_{free}$ test set	2032 reflections (5.01%)	wwPDB-VP
Wilson B-factor (Å <sup>2</sup> )	33.9	Xtrriage
Anisotropy	0.266	Xtrriage
Bulk solvent $k_{sol}$ (e/Å <sup>3</sup> ), $B_{sol}$ (Å <sup>2</sup> )	0.36 , 40.1	EDS
L-test for twinning <sup>2</sup>	$\langle  L  \rangle = 0.49$ , $\langle L^2 \rangle = 0.32$	Xtrriage
Estimated twinning fraction	No twinning to report.	Xtrriage
$F_o, F_c$ correlation	0.92	EDS
Total number of atoms	8633	wwPDB-VP
Average B, all atoms (Å <sup>2</sup> )	26.0	wwPDB-VP

Xtrriage's analysis on translational NCS is as follows: *The largest off-origin peak in the Patterson function is 3.25% of the height of the origin peak. No significant pseudotranslation is detected.*

<sup>1</sup>Intensities estimated from amplitudes.

<sup>2</sup>Theoretical values of  $\langle |L| \rangle$ ,  $\langle L^2 \rangle$  for acentric reflections are 0.5, 0.333 respectively for untwinned datasets, and 0.375, 0.2 for perfectly twinned datasets.

## 5 Model quality [i](#)

### 5.1 Standard geometry [i](#)

Bond lengths and bond angles in the following residue types are not validated in this section: BS2

The Z score for a bond length (or angle) is the number of standard deviations the observed value is removed from the expected value. A bond length (or angle) with  $|Z| > 5$  is considered an outlier worth inspection. RMSZ is the root-mean-square of all Z scores of the bond lengths (or angles).

Mol	Chain	Bond lengths		Bond angles	
		RMSZ	# Z  >5	RMSZ	# Z  >5
1	A	0.83	1/1676 (0.1%)	0.83	0/2287
1	B	0.87	0/1676	0.83	0/2287
1	C	0.87	0/1780	0.87	0/2424
1	D	0.91	1/1676 (0.1%)	0.89	2/2287 (0.1%)
1	E	0.85	0/1676	0.83	0/2287
All	All	0.87	2/8484 (0.0%)	0.85	2/11572 (0.0%)

Chiral center outliers are detected by calculating the chiral volume of a chiral center and verifying if the center is modelled as a planar moiety or with the opposite hand. A planarity outlier is detected by checking planarity of atoms in a peptide group, atoms in a mainchain group or atoms of a sidechain that are expected to be planar.

Mol	Chain	#Chirality outliers	#Planarity outliers
1	A	0	1
1	C	0	1
All	All	0	2

All (2) bond length outliers are listed below:

Mol	Chain	Res	Type	Atoms	Z	Observed(Å)	Ideal(Å)
1	D	53	TYR	CE2-CZ	6.13	1.46	1.38
1	A	188	CYS	CB-SG	5.34	1.91	1.82

All (2) bond angle outliers are listed below:

Mol	Chain	Res	Type	Atoms	Z	Observed(°)	Ideal(°)
1	D	37	ASP	CB-CG-OD1	5.74	123.47	118.30
1	D	120	ARG	NE-CZ-NH1	5.55	123.07	120.30

There are no chirality outliers.



All (2) planarity outliers are listed below:

Mol	Chain	Res	Type	Group
1	A	188	CYS	Peptide
1	C	188	CYS	Peptide

## 5.2 Too-close contacts [i](#)

In the following table, the Non-H and H(model) columns list the number of non-hydrogen atoms and hydrogen atoms in the chain respectively. The H(added) column lists the number of hydrogen atoms added and optimized by MolProbity. The Clashes column lists the number of clashes within the asymmetric unit, whereas Symm-Clashes lists symmetry-related clashes.

Mol	Chain	Non-H	H(model)	H(added)	Clashes	Symm-Clashes
1	A	1636	0	1572	31	1
1	B	1636	0	1572	22	0
1	C	1737	0	1663	27	1
1	D	1636	0	1572	30	0
1	E	1636	0	1572	22	0
2	A	31	0	32	10	0
2	D	31	0	32	14	0
2	E	31	0	32	14	0
3	A	48	0	0	7	0
3	B	41	0	0	5	0
3	C	64	0	0	8	0
3	D	54	0	0	12	0
3	E	52	0	0	6	0
All	All	8633	0	8047	150	1

The all-atom clashscore is defined as the number of clashes found per 1000 atoms (including hydrogen atoms). The all-atom clashscore for this structure is 9.

All (150) close contacts within the same asymmetric unit are listed below, sorted by their clash magnitude.

Atom-1	Atom-2	Interatomic distance (Å)	Clash overlap (Å)
1:B:1:GLN:N	1:B:1:GLN:OE1	1.68	1.24
1:C:1:GLN:N	1:C:1:GLN:OE1	1.74	1.19
1:A:1:GLN:N	1:A:1:GLN:OE1	1.77	1.17
1:D:1:GLN:N	1:D:1:GLN:OE1	1.80	1.13
1:E:1:GLN:N	1:E:1:GLN:OE1	1.83	1.10
1:D:160:GLN:HG2	3:D:2040:HOH:O	1.55	1.05
1:D:14:ARG:HD2	3:D:2004:HOH:O	1.55	1.04

*Continued on next page...*

*Continued from previous page...*

Atom-1	Atom-2	Interatomic distance (Å)	Clash overlap (Å)
1:A:187:SER:HB3	3:A:2041:HOH:O	1.58	1.03
2:D:1206:BS2:HAP1	2:D:1206:BS2:OAU	1.68	0.94
1:A:187:SER:CB	3:A:2041:HOH:O	2.13	0.93
1:A:187:SER:N	3:A:2041:HOH:O	1.80	0.92
1:C:16:PRO:HD2	3:C:2008:HOH:O	1.70	0.90
2:D:1206:BS2:OAU	2:D:1206:BS2:CAP	2.19	0.90
2:D:1206:BS2:HAN2	1:E:116:ILE:HD11	1.53	0.89
2:D:1206:BS2:HBD	2:D:1206:BS2:HAQ1	1.55	0.87
2:D:1206:BS2:HAQ1	2:D:1206:BS2:CBD	2.05	0.85
1:A:165:SER:OG	3:A:2035:HOH:O	1.79	0.82
1:A:116:ILE:HD12	2:E:1206:BS2:HAH	1.61	0.82
2:E:1206:BS2:CAZ	3:E:2052:HOH:O	2.30	0.80
1:A:116:ILE:CD1	2:E:1206:BS2:HAH	2.14	0.78
2:D:1206:BS2:OAU	2:D:1206:BS2:CAQ	2.33	0.77
1:D:14:ARG:CD	3:D:2004:HOH:O	2.23	0.75
1:A:116:ILE:CD1	2:E:1206:BS2:CAH	2.66	0.74
1:A:116:ILE:HD12	2:E:1206:BS2:CAH	2.20	0.71
1:B:158:THR:HG21	3:B:2035:HOH:O	1.89	0.71
1:B:1:GLN:N	1:B:1:GLN:CD	2.41	0.71
1:C:77:ARG:HD2	1:C:106:VAL:HG22	1.73	0.69
2:E:1206:BS2:CAM	3:E:2052:HOH:O	2.40	0.69
1:B:77:ARG:HD2	1:B:106:VAL:HG22	1.75	0.69
1:A:55:GLN:NE2	1:A:114:MET:HE3	2.09	0.68
1:E:1:GLN:HG2	3:E:2002:HOH:O	1.92	0.68
1:C:53:TYR:HB3	3:C:2014:HOH:O	1.94	0.68
1:D:31:LEU:O	3:D:2009:HOH:O	2.12	0.67
2:D:1206:BS2:OAU	2:D:1206:BS2:HAQ1	1.91	0.66
1:B:154:LEU:HB2	1:B:194:ILE:HG21	1.78	0.65
1:B:154:LEU:HB2	1:B:194:ILE:CG2	2.27	0.65
1:D:188:CYS:SG	2:D:1206:BS2:HAE	2.37	0.65
2:D:1206:BS2:HAN2	1:E:116:ILE:CD1	2.27	0.64
1:B:48:VAL:HG21	1:B:125:CYS:SG	2.38	0.63
1:D:158:THR:HG22	3:D:2039:HOH:O	1.97	0.62
1:B:158:THR:CB	3:B:2035:HOH:O	2.48	0.61
1:E:77:ARG:HD2	1:E:106:VAL:HG22	1.83	0.61
2:A:1206:BS2:HAP1	2:A:1206:BS2:OAU	2.00	0.61
2:A:1206:BS2:CAL	2:A:1206:BS2:HBA	2.30	0.60
1:B:8:LYS:HD2	3:B:2002:HOH:O	2.02	0.60
1:B:154:LEU:HD13	1:B:196:VAL:HG23	1.83	0.59
1:A:187:SER:CA	3:A:2041:HOH:O	2.26	0.59
1:C:48:VAL:HG21	1:C:125:CYS:SG	2.42	0.59

*Continued on next page...*

*Continued from previous page...*

Atom-1	Atom-2	Interatomic distance (Å)	Clash overlap (Å)
1:D:103:GLN:HG3	3:D:2030:HOH:O	2.02	0.58
1:A:116:ILE:HD11	2:E:1206:BS2:CAH	2.33	0.58
2:A:1206:BS2:HAN1	1:B:116:ILE:HD11	1.85	0.58
3:C:2008:HOH:O	1:D:5:MET:SD	2.57	0.58
2:A:1206:BS2:OAU	2:A:1206:BS2:CAP	2.50	0.57
1:D:77:ARG:HD2	1:D:106:VAL:HG22	1.85	0.57
1:E:116:ILE:HG22	1:E:116:ILE:O	2.03	0.57
1:A:55:GLN:NE2	1:A:114:MET:CE	2.67	0.57
1:D:1:GLN:N	1:D:1:GLN:CD	2.57	0.57
1:E:1:GLN:N	1:E:1:GLN:CD	2.58	0.57
1:D:93:SER:HB3	1:D:121:LEU:HD11	1.88	0.56
1:D:188:CYS:SG	1:D:189:CYS:N	2.79	0.55
1:B:158:THR:CG2	3:B:2035:HOH:O	2.53	0.55
1:D:48:VAL:HG21	1:D:125:CYS:SG	2.47	0.54
2:E:1206:BS2:CAY	3:E:2052:HOH:O	2.54	0.54
2:A:1206:BS2:OAU	2:A:1206:BS2:CAQ	2.55	0.54
1:D:157:ASP:HB2	3:D:2039:HOH:O	2.06	0.54
1:E:41:VAL:HG22	1:E:48:VAL:HG22	1.90	0.54
2:E:1206:BS2:OAU	2:E:1206:BS2:HAP1	2.06	0.54
2:D:1206:BS2:HAH	3:D:2048:HOH:O	2.07	0.54
2:E:1206:BS2:OAU	2:E:1206:BS2:CAP	2.55	0.54
1:B:17:MET:O	1:C:5:MET:HE2	2.07	0.53
1:B:77:ARG:CD	1:B:106:VAL:HG22	2.37	0.53
2:A:1206:BS2:OAU	2:A:1206:BS2:HAQ1	2.08	0.53
1:A:114:MET:HE1	2:E:1206:BS2:HAB	1.90	0.53
1:A:114:MET:CE	2:E:1206:BS2:HAB	2.39	0.53
1:C:55:GLN:CD	1:C:114:MET:HE3	2.30	0.52
1:C:36:GLN:NE2	3:C:2014:HOH:O	2.42	0.52
1:D:188:CYS:SG	2:D:1206:BS2:CAE	2.98	0.52
1:A:1:GLN:N	1:A:1:GLN:CD	2.53	0.51
1:A:18:TYR:CE2	1:A:60:LEU:HD21	2.47	0.50
1:D:158:THR:HG21	3:D:2042:HOH:O	2.10	0.50
1:C:41:VAL:HG22	1:C:48:VAL:HG22	1.93	0.50
1:E:77:ARG:CD	1:E:106:VAL:HG22	2.41	0.50
1:A:41:VAL:HG22	1:A:48:VAL:HG22	1.93	0.50
1:D:188:CYS:SG	2:D:1206:BS2:HAG	2.51	0.50
1:A:120:ARG:HD2	1:E:94:THR:O	2.11	0.50
1:A:168:ALA:O	1:A:205:ARG:NH2	2.45	0.49
1:B:204:GLU:HG2	3:B:2039:HOH:O	2.11	0.49
1:A:141:LYS:HE3	3:A:2045:HOH:O	2.12	0.49
1:D:91:TYR:CE2	2:D:1206:BS2:HAR2	2.47	0.49

*Continued on next page...*

*Continued from previous page...*

Atom-1	Atom-2	Interatomic distance (Å)	Clash overlap (Å)
1:D:143:GLY:HA2	1:D:154:LEU:HD11	1.93	0.49
1:B:41:VAL:HG13	1:B:127:PRO:HG3	1.95	0.49
1:D:205:ARG:C	3:D:2054:HOH:O	2.51	0.48
1:C:132:SER:C	1:C:134:GLU:H	2.18	0.47
2:E:1206:BS2:OAU	2:E:1206:BS2:CAQ	2.61	0.47
1:A:91:TYR:CE2	2:A:1206:BS2:HAR1	2.50	0.47
1:E:55:GLN:NE2	1:E:114:MET:HE3	2.28	0.47
1:E:55:GLN:NE2	1:E:114:MET:CE	2.78	0.47
1:A:143:GLY:HA2	1:A:154:LEU:HD11	1.96	0.46
2:A:1206:BS2:CAH	2:A:1206:BS2:HBB	2.45	0.46
1:A:170:SER:OG	1:A:171:LYS:N	2.48	0.46
1:C:54:GLU:O	1:C:116:ILE:HA	2.14	0.46
1:C:87:ASP:OD2	1:C:146:VAL:HG22	2.15	0.46
1:E:53:TYR:CD1	1:E:116:ILE:CG2	2.99	0.46
1:A:204:GLU:HG2	3:A:2047:HOH:O	2.16	0.45
1:C:143:GLY:HA2	1:C:154:LEU:HD11	1.98	0.45
1:E:53:TYR:HD1	1:E:116:ILE:CG2	2.28	0.45
1:A:127:PRO:HA	1:A:136:VAL:HG11	1.97	0.45
1:C:175:LEU:HD23	1:C:211:PHE:HB2	1.98	0.45
1:C:15:SER:N	3:C:2006:HOH:O	2.49	0.45
1:C:55:GLN:CD	1:C:114:MET:CE	2.85	0.44
1:A:77:ARG:HD2	1:A:106:VAL:HG22	1.99	0.44
1:C:1:GLN:N	1:C:1:GLN:CD	2.59	0.44
1:E:170:SER:OG	1:E:171:LYS:N	2.51	0.44
1:E:66:ASP:C	1:E:66:ASP:OD1	2.57	0.43
1:C:133:GLU:HG2	1:C:133:GLU:O	2.18	0.43
1:D:108:THR:HG22	1:D:110:ASP:H	1.84	0.43
1:E:41:VAL:HG13	1:E:127:PRO:HG3	1.99	0.43
1:D:188:CYS:SG	2:D:1206:BS2:CAG	3.06	0.43
1:D:186:TYR:OH	3:D:2048:HOH:O	2.20	0.43
1:B:1:GLN:CD	1:B:1:GLN:H3	2.13	0.43
1:B:50:LEU:O	1:B:120:ARG:HA	2.19	0.43
2:A:1206:BS2:HAQ2	2:A:1206:BS2:HAR2	1.90	0.42
1:D:53:TYR:CD1	1:D:116:ILE:CG2	3.02	0.42
2:E:1206:BS2:OAU	2:E:1206:BS2:HAQ1	2.18	0.42
1:D:204:GLU:HG2	3:D:2047:HOH:O	2.20	0.42
1:B:48:VAL:CG2	1:B:125:CYS:SG	3.05	0.42
1:B:160:GLN:NE2	1:B:160:GLN:HA	2.34	0.42
1:C:94:THR:O	1:D:120:ARG:HD2	2.18	0.42
1:E:50:LEU:O	1:E:120:ARG:HA	2.19	0.42
1:D:132:SER:C	1:D:134:GLU:H	2.23	0.42

*Continued on next page...*

Continued from previous page...

Atom-1	Atom-2	Interatomic distance (Å)	Clash overlap (Å)
1:E:55:GLN:CD	1:E:114:MET:CE	2.89	0.41
1:E:93:SER:HB3	1:E:121:LEU:HD11	2.02	0.41
1:C:170:SER:OG	1:C:171:LYS:N	2.53	0.41
1:B:53:TYR:CD1	1:B:116:ILE:CG2	3.03	0.41
1:C:14:ARG:C	3:C:2006:HOH:O	2.58	0.41
1:C:48:VAL:CG2	1:C:125:CYS:SG	3.09	0.41
1:C:55:GLN:CG	1:C:114:MET:HE3	2.50	0.41
1:D:48:VAL:CG2	1:D:125:CYS:SG	3.09	0.41
1:E:59:LYS:CE	3:E:2017:HOH:O	2.68	0.41
1:A:131:ASP:OD1	1:A:131:ASP:N	2.52	0.41
1:A:186:TYR:HE2	2:A:1206:BS2:HAQ2	1.86	0.41
1:C:213:ARG:HG3	3:C:2061:HOH:O	2.21	0.41
1:D:188:CYS:C	1:D:189:CYS:SG	2.99	0.41
1:A:132:SER:C	1:A:134:GLU:H	2.23	0.41
1:C:53:TYR:HD2	3:C:2014:HOH:O	2.04	0.41
1:E:57:ARG:HG2	3:E:2016:HOH:O	2.21	0.41
1:A:49:ASP:HA	1:A:121:LEU:O	2.21	0.40
1:B:150:PHE:CD2	1:B:191:GLU:HG3	2.56	0.40
1:C:168:ALA:O	1:C:205:ARG:NH2	2.54	0.40
1:C:175:LEU:HD23	1:C:211:PHE:CB	2.50	0.40

All (1) symmetry-related close contacts are listed below. The label for Atom-2 includes the symmetry operator and encoded unit-cell translations to be applied.

Atom-1	Atom-2	Interatomic distance (Å)	Clash overlap (Å)
1:A:133:GLU:OE2	1:C:155:LYS:NZ[6_545]	2.13	0.07

## 5.3 Torsion angles [i](#)

### 5.3.1 Protein backbone [i](#)

In the following table, the Percentiles column shows the percent Ramachandran outliers of the chain as a percentile score with respect to all X-ray entries followed by that with respect to entries of similar resolution.

The Analysed column shows the number of residues for which the backbone conformation was analysed, and the total number of residues.

Mol	Chain	Analysed	Favoured	Allowed	Outliers	Percentiles
1	A	203/217 (94%)	196 (97%)	6 (3%)	1 (0%)	29 52

Continued on next page...

*Continued from previous page...*

Mol	Chain	Analysed	Favoured	Allowed	Outliers	Percentiles	
1	B	203/217 (94%)	197 (97%)	4 (2%)	2 (1%)	15	32
1	C	215/217 (99%)	208 (97%)	6 (3%)	1 (0%)	29	52
1	D	203/217 (94%)	197 (97%)	6 (3%)	0	100	100
1	E	203/217 (94%)	199 (98%)	3 (2%)	1 (0%)	29	52
All	All	1027/1085 (95%)	997 (97%)	25 (2%)	5 (0%)	29	52

All (5) Ramachandran outliers are listed below:

Mol	Chain	Res	Type
1	B	170	SER
1	E	170	SER
1	A	170	SER
1	C	170	SER
1	B	190	PRO

### 5.3.2 Protein sidechains [i](#)

In the following table, the Percentiles column shows the percent sidechain outliers of the chain as a percentile score with respect to all X-ray entries followed by that with respect to entries of similar resolution.

The Analysed column shows the number of residues for which the sidechain conformation was analysed, and the total number of residues.

Mol	Chain	Analysed	Rotameric	Outliers	Percentiles	
1	A	188/197 (95%)	182 (97%)	6 (3%)	39	65
1	B	188/197 (95%)	182 (97%)	6 (3%)	39	65
1	C	197/197 (100%)	193 (98%)	4 (2%)	55	78
1	D	188/197 (95%)	181 (96%)	7 (4%)	34	60
1	E	188/197 (95%)	184 (98%)	4 (2%)	53	77
All	All	949/985 (96%)	922 (97%)	27 (3%)	43	69

All (27) residues with a non-rotameric sidechain are listed below:

Mol	Chain	Res	Type
1	A	1	GLN
1	A	44	SER
1	A	68	ASN

*Continued on next page...*

*Continued from previous page...*

Mol	Chain	Res	Type
1	A	116	ILE
1	A	187	SER
1	A	191	GLU
1	B	1	GLN
1	B	31	LEU
1	B	68	ASN
1	B	155	LYS
1	B	184	GLN
1	B	187	SER
1	C	1	GLN
1	C	68	ASN
1	C	127	PRO
1	C	215	LEU
1	D	1	GLN
1	D	31	LEU
1	D	41	VAL
1	D	44	SER
1	D	68	ASN
1	D	155	LYS
1	D	184	GLN
1	E	1	GLN
1	E	31	LEU
1	E	79	SER
1	E	184	GLN

Sometimes sidechains can be flipped to improve hydrogen bonding and reduce clashes. All (32) such sidechains are listed below:

Mol	Chain	Res	Type
1	A	3	ASN
1	A	13	ASN
1	A	55	GLN
1	A	61	ASN
1	A	68	ASN
1	A	72	ASN
1	A	160	GLN
1	B	3	ASN
1	B	13	ASN
1	B	36	GLN
1	B	55	GLN
1	B	61	ASN
1	B	68	ASN
1	B	160	GLN

*Continued on next page...*

*Continued from previous page...*

Mol	Chain	Res	Type
1	C	3	ASN
1	C	13	ASN
1	C	36	GLN
1	C	55	GLN
1	C	68	ASN
1	C	72	ASN
1	C	160	GLN
1	D	3	ASN
1	D	13	ASN
1	D	55	GLN
1	D	68	ASN
1	D	160	GLN
1	D	184	GLN
1	E	3	ASN
1	E	13	ASN
1	E	55	GLN
1	E	68	ASN
1	E	72	ASN

### 5.3.3 RNA [i](#)

There are no RNA molecules in this entry.

## 5.4 Non-standard residues in protein, DNA, RNA chains [i](#)

There are no non-standard protein/DNA/RNA residues in this entry.

## 5.5 Carbohydrates [i](#)

There are no monosaccharides in this entry.

## 5.6 Ligand geometry [i](#)

3 ligands are modelled in this entry.

In the following table, the Counts columns list the number of bonds (or angles) for which Mogul statistics could be retrieved, the number of bonds (or angles) that are observed in the model and the number of bonds (or angles) that are defined in the Chemical Component Dictionary. The Link column lists molecule types, if any, to which the group is linked. The Z score for a bond length (or angle) is the number of standard deviations the observed value is removed from the



expected value. A bond length (or angle) with  $|Z| > 2$  is considered an outlier worth inspection. RMSZ is the root-mean-square of all Z scores of the bond lengths (or angles).

Mol	Type	Chain	Res	Link	Bond lengths			Bond angles		
					Counts	RMSZ	# $ Z  > 2$	Counts	RMSZ	# $ Z  > 2$
2	BS2	E	1206	-	36,36,36	1.24	3 (8%)	47,51,51	1.37	5 (10%)
2	BS2	A	1206	-	36,36,36	1.55	3 (8%)	47,51,51	1.86	12 (25%)
2	BS2	D	1206	-	36,36,36	1.09	4 (11%)	47,51,51	2.24	12 (25%)

In the following table, the Chirals column lists the number of chiral outliers, the number of chiral centers analysed, the number of these observed in the model and the number defined in the Chemical Component Dictionary. Similar counts are reported in the Torsion and Rings columns. '-' means no outliers of that kind were identified.

Mol	Type	Chain	Res	Link	Chirals	Torsions	Rings
2	BS2	E	1206	-	-	0/6/42/42	0/7/6/6
2	BS2	A	1206	-	-	1/6/42/42	0/7/6/6
2	BS2	D	1206	-	-	0/6/42/42	0/7/6/6

All (10) bond length outliers are listed below:

Mol	Chain	Res	Type	Atoms	Z	Observed(Å)	Ideal(Å)
2	A	1206	BS2	CAZ-CBD	7.40	1.59	1.52
2	E	1206	BS2	OAU-CBA	-4.59	1.38	1.44
2	E	1206	BS2	CAY-CBD	3.53	1.55	1.52
2	D	1206	BS2	CAZ-CBD	3.08	1.55	1.52
2	A	1206	BS2	CAY-CBD	2.82	1.55	1.52
2	D	1206	BS2	OAU-CBA	2.46	1.48	1.44
2	D	1206	BS2	CAN-CAW	2.27	1.56	1.51
2	D	1206	BS2	CAR-CAV	2.13	1.55	1.51
2	A	1206	BS2	OAU-CBA	2.07	1.47	1.44
2	E	1206	BS2	CAZ-CBD	2.00	1.54	1.52

All (29) bond angle outliers are listed below:

Mol	Chain	Res	Type	Atoms	Z	Observed(°)	Ideal(°)
2	D	1206	BS2	CAS-CBA-CAT	-8.53	95.67	112.07
2	A	1206	BS2	CAX-CAZ-CBD	5.15	131.06	120.09
2	D	1206	BS2	OAU-CBA-CAT	4.76	120.96	108.95
2	D	1206	BS2	CAK-CAX-CAZ	4.06	123.16	118.76
2	E	1206	BS2	CAW-CAY-CBD	3.98	128.56	120.09
2	D	1206	BS2	CAL-CAY-CBD	-3.92	111.26	120.54
2	D	1206	BS2	CAW-CAY-CBD	3.90	128.39	120.09

*Continued on next page...*

Continued from previous page...

Mol	Chain	Res	Type	Atoms	Z	Observed(°)	Ideal(°)
2	A	1206	BS2	CAK-CAX-CAZ	3.57	122.62	118.76
2	A	1206	BS2	CAM-CAZ-CBD	-3.55	112.13	120.54
2	D	1206	BS2	CAN-CAO-CAX	-3.49	100.17	115.40
2	E	1206	BS2	CAL-CAY-CBD	-3.40	112.50	120.54
2	A	1206	BS2	CAR-NBE-CBC	-3.38	105.10	114.16
2	A	1206	BS2	CAO-CAX-CAK	-3.25	108.77	119.28
2	A	1206	BS2	CAW-CAY-CBD	2.90	126.27	120.09
2	A	1206	BS2	CAL-CAY-CBD	-2.86	113.77	120.54
2	A	1206	BS2	CAV-CAR-NBE	2.82	117.46	112.59
2	D	1206	BS2	CAQ-CBC-NBE	-2.82	98.78	104.02
2	E	1206	BS2	CAN-CAW-CAJ	-2.75	110.37	119.28
2	D	1206	BS2	CAX-CAZ-CBD	2.73	125.90	120.09
2	A	1206	BS2	CAO-CAN-CAW	-2.57	104.17	115.40
2	D	1206	BS2	CAP-CBB-NBE	-2.56	99.26	104.02
2	A	1206	BS2	CAS-CBA-CAT	-2.50	107.27	112.07
2	D	1206	BS2	CAT-CBC-NBE	2.48	112.58	108.45
2	A	1206	BS2	CAJ-CAW-CAY	2.45	121.41	118.76
2	E	1206	BS2	CAN-CAW-CAY	2.41	130.49	122.61
2	E	1206	BS2	CAX-CAZ-CBD	2.40	125.19	120.09
2	A	1206	BS2	CBA-CAS-CBB	-2.34	109.17	112.69
2	D	1206	BS2	CAN-CAW-CAJ	-2.26	111.95	119.28
2	D	1206	BS2	CAM-CAZ-CBD	-2.07	115.62	120.54

There are no chirality outliers.

All (1) torsion outliers are listed below:

Mol	Chain	Res	Type	Atoms
2	A	1206	BS2	CAV-CAR-NBE-CBB

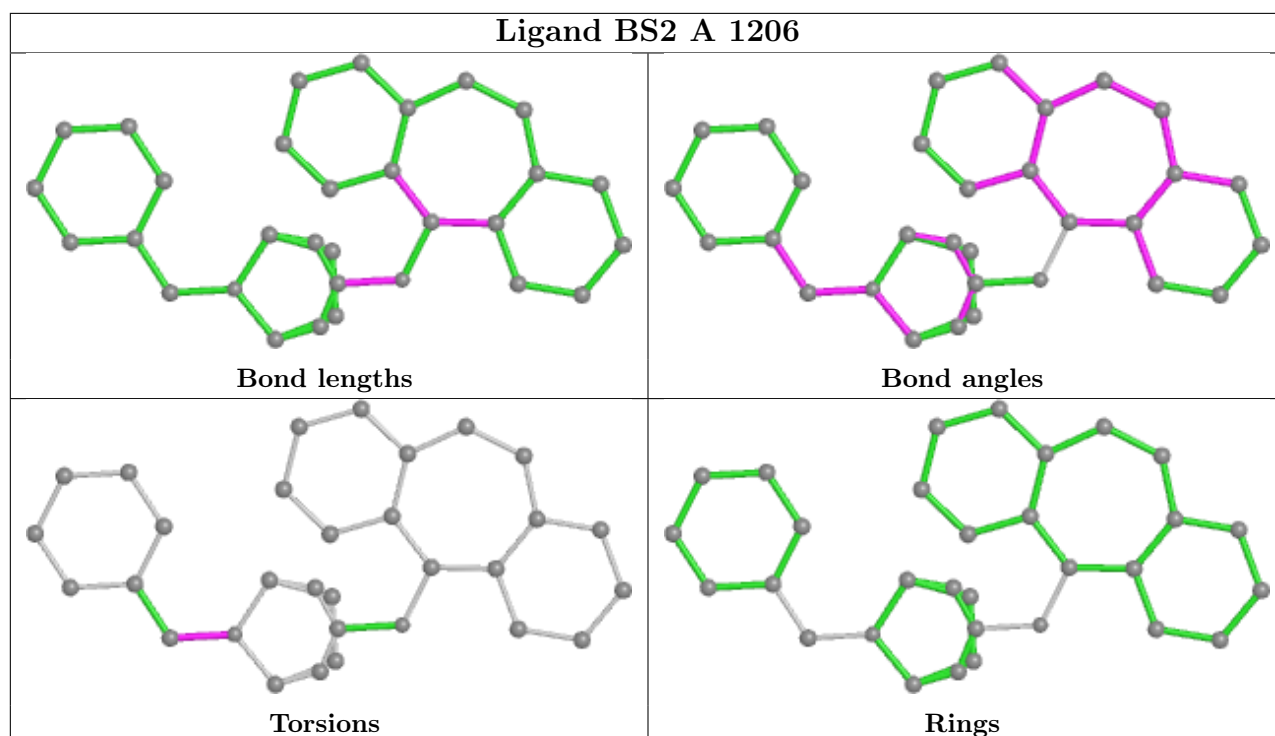
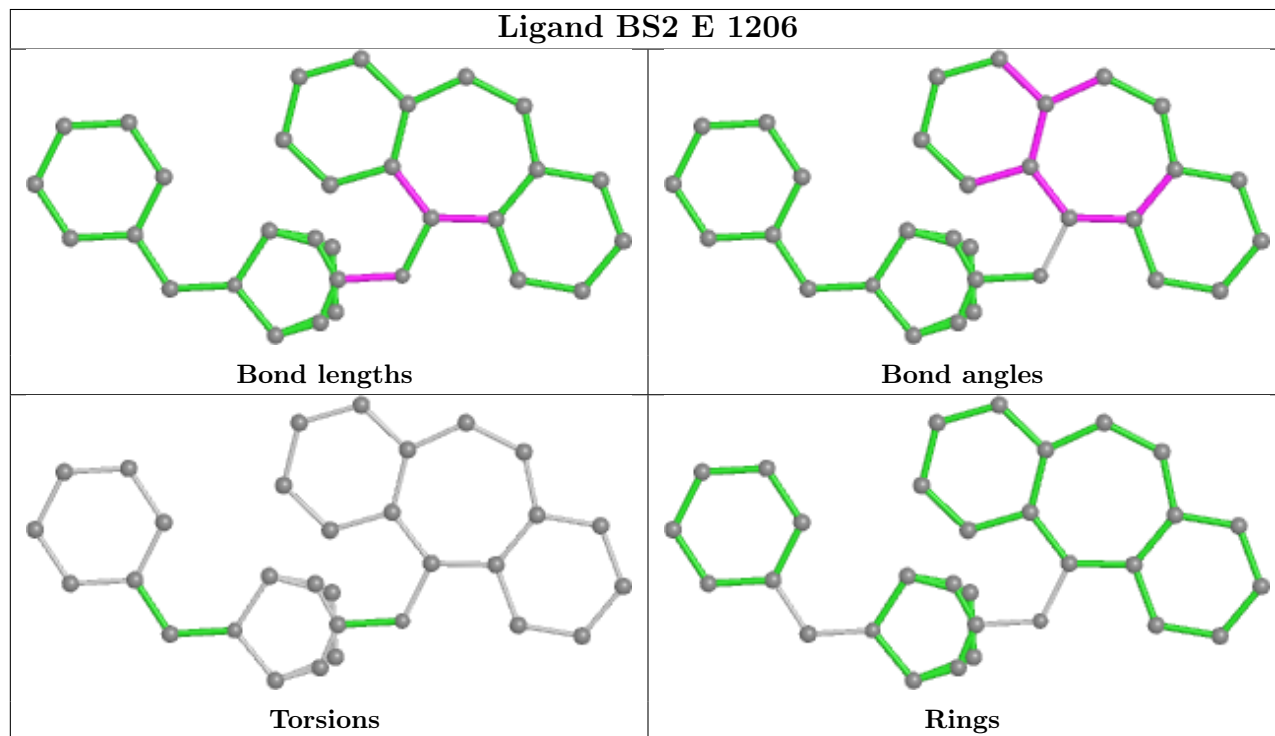
There are no ring outliers.

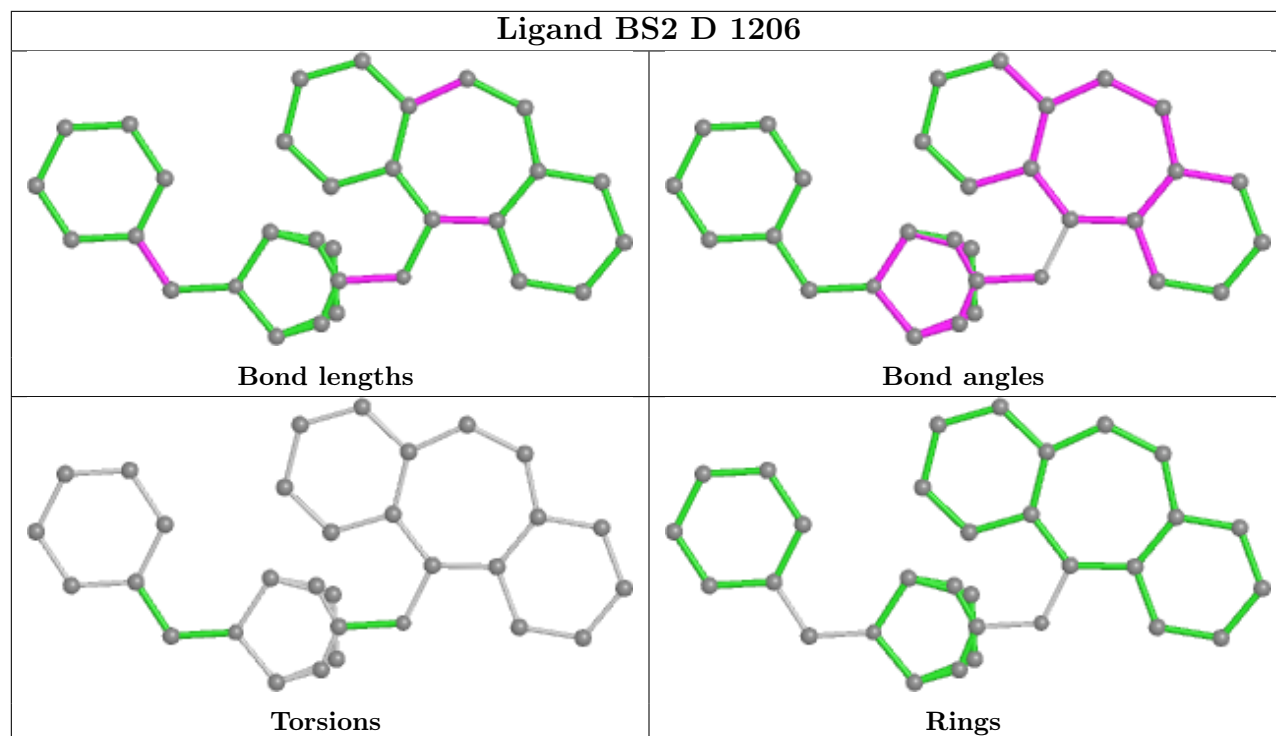
3 monomers are involved in 38 short contacts:

Mol	Chain	Res	Type	Clashes	Symm-Clashes
2	E	1206	BS2	14	0
2	A	1206	BS2	10	0
2	D	1206	BS2	14	0

The following is a two-dimensional graphical depiction of Mogul quality analysis of bond lengths, bond angles, torsion angles, and ring geometry for all instances of the Ligand of Interest. In addition, ligands with molecular weight > 250 and outliers as shown on the validation Tables will also be included. For torsion angles, if less than 5% of the Mogul distribution of torsion angles is within 10 degrees of the torsion angle in question, then that torsion angle is considered an outlier.

Any bond that is central to one or more torsion angles identified as an outlier by Mogul will be highlighted in the graph. For rings, the root-mean-square deviation (RMSD) between the ring in question and similar rings identified by Mogul is calculated over all ring torsion angles. If the average RMSD is greater than 60 degrees and the minimal RMSD between the ring in question and any Mogul-identified rings is also greater than 60 degrees, then that ring is considered an outlier. The outliers are highlighted in purple. The color gray indicates Mogul did not find sufficient equivalents in the CSD to analyse the geometry.





## 5.7 Other polymers [i](#)

There are no such residues in this entry.

## 5.8 Polymer linkage issues [i](#)

There are no chain breaks in this entry.

## 6 Fit of model and data [i](#)

### 6.1 Protein, DNA and RNA chains [i](#)

In the following table, the column labelled ‘#RSRZ> 2’ contains the number (and percentage) of RSRZ outliers, followed by percent RSRZ outliers for the chain as percentile scores relative to all X-ray entries and entries of similar resolution. The OWAB column contains the minimum, median, 95<sup>th</sup> percentile and maximum values of the occupancy-weighted average B-factor per residue. The column labelled ‘Q< 0.9’ lists the number of (and percentage) of residues with an average occupancy less than 0.9.

Mol	Chain	Analysed	<RSRZ>	#RSRZ>2	OWAB(Å <sup>2</sup> )	Q<0.9
1	A	205/217 (94%)	-0.04	2 (0%) 82 80	23, 26, 32, 35	0
1	B	205/217 (94%)	-0.01	2 (0%) 82 80	22, 26, 32, 35	0
1	C	217/217 (100%)	0.03	4 (1%) 68 64	21, 27, 33, 36	0
1	D	205/217 (94%)	-0.05	0 100 100	23, 26, 31, 37	0
1	E	205/217 (94%)	-0.08	0 100 100	22, 26, 31, 36	0
All	All	1037/1085 (95%)	-0.03	8 (0%) 86 84	21, 26, 32, 37	0

All (8) RSRZ outliers are listed below:

Mol	Chain	Res	Type	RSRZ
1	A	187	SER	4.9
1	C	187	SER	3.6
1	C	217	ASP	2.7
1	B	68	ASN	2.6
1	A	186	TYR	2.4
1	B	187	SER	2.1
1	C	133	GLU	2.1
1	C	188	CYS	2.0

### 6.2 Non-standard residues in protein, DNA, RNA chains [i](#)

There are no non-standard protein/DNA/RNA residues in this entry.

### 6.3 Carbohydrates [i](#)

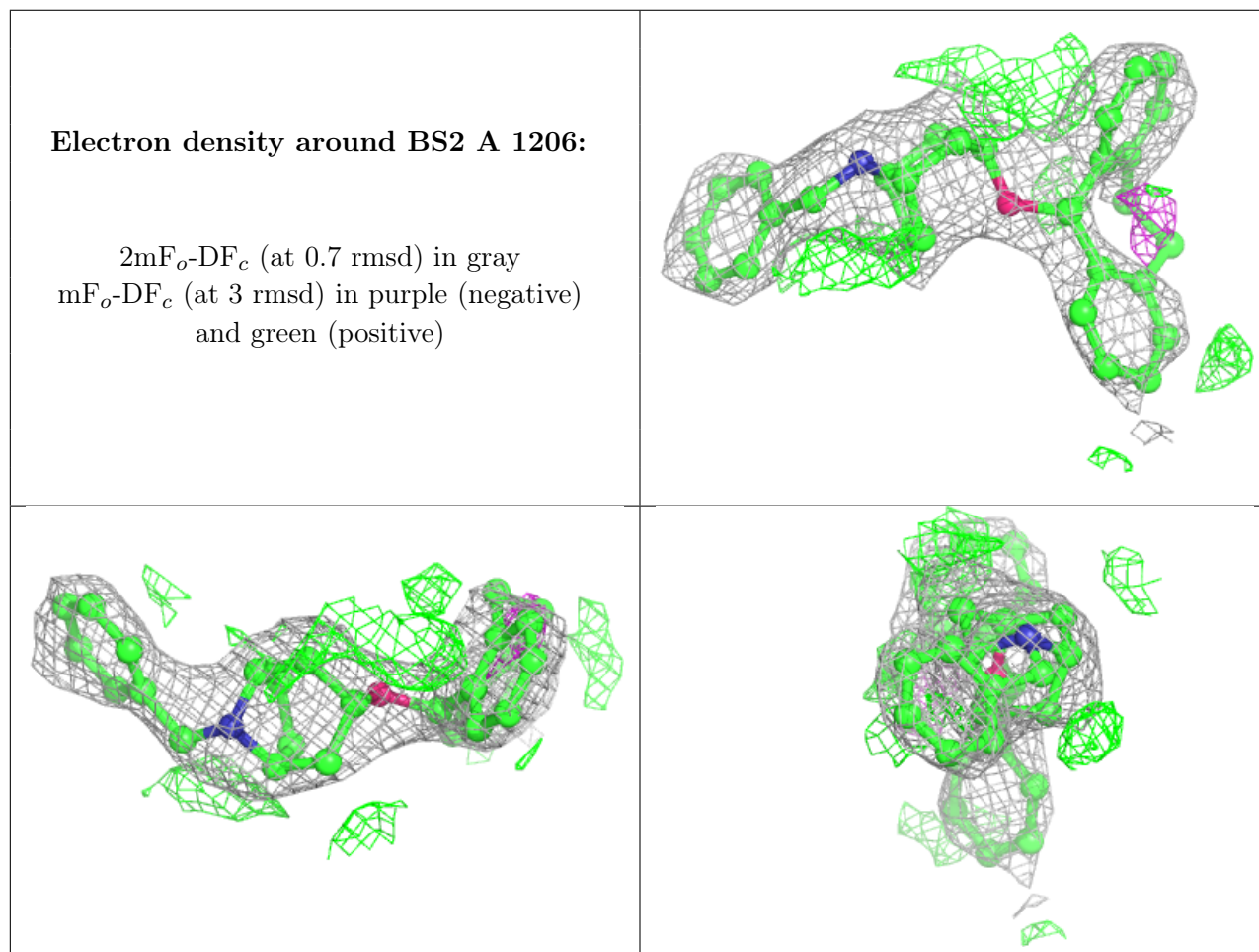
There are no monosaccharides in this entry.

## 6.4 Ligands [i](#)

In the following table, the Atoms column lists the number of modelled atoms in the group and the number defined in the chemical component dictionary. The B-factors column lists the minimum, median, 95<sup>th</sup> percentile and maximum values of B factors of atoms in the group. The column labelled 'Q< 0.9' lists the number of atoms with occupancy less than 0.9.

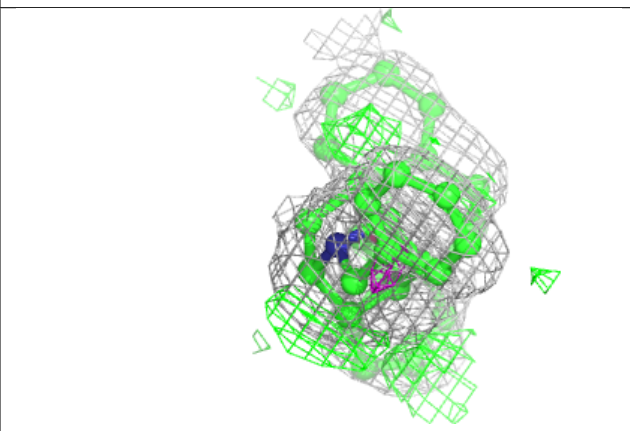
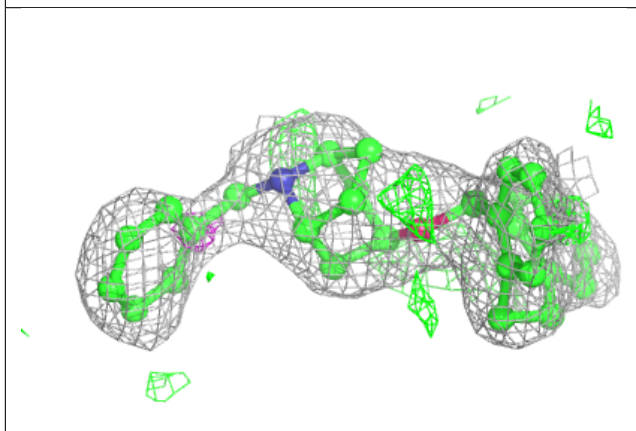
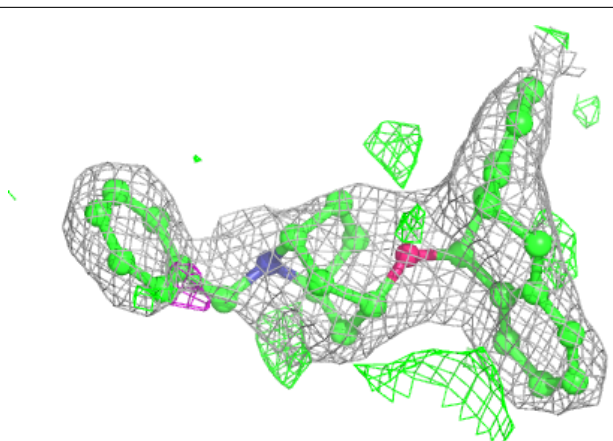
Mol	Type	Chain	Res	Atoms	RSCC	RSR	B-factors(Å <sup>2</sup> )	Q<0.9
2	BS2	A	1206	31/31	0.85	0.28	29,32,38,38	31
2	BS2	D	1206	31/31	0.90	0.20	25,30,34,34	31
2	BS2	E	1206	31/31	0.95	0.19	26,29,32,33	0

The following is a graphical depiction of the model fit to experimental electron density of all instances of the Ligand of Interest. In addition, ligands with molecular weight > 250 and outliers as shown on the geometry validation Tables will also be included. Each fit is shown from different orientation to approximate a three-dimensional view.

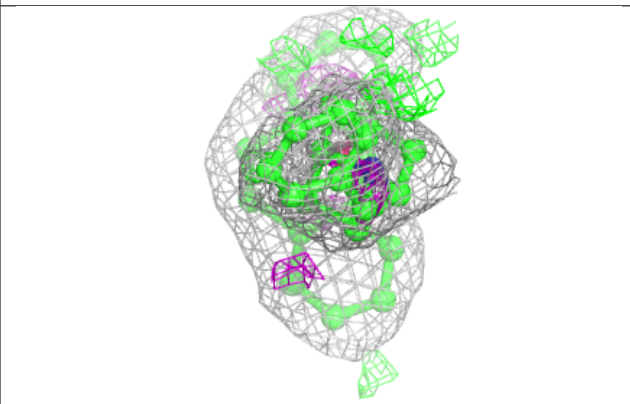
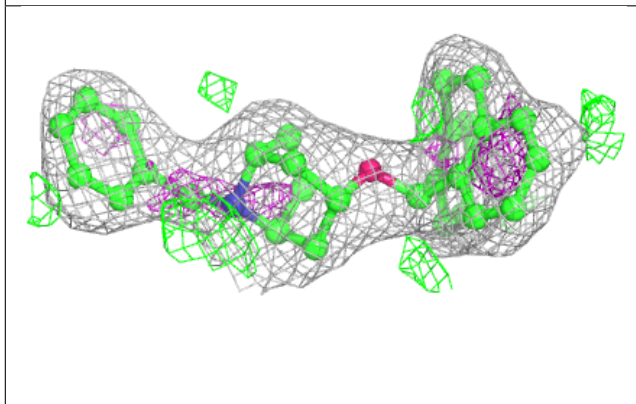
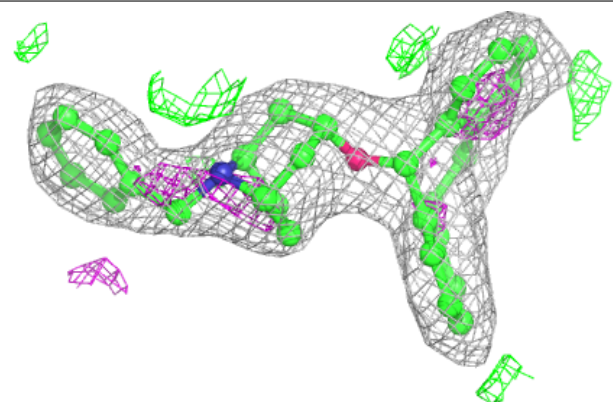


**Electron density around BS2 D 1206:**

$2mF_o-DF_c$  (at 0.7 rmsd) in gray  
 $mF_o-DF_c$  (at 3 rmsd) in purple (negative)  
and green (positive)

**Electron density around BS2 E 1206:**

$2mF_o-DF_c$  (at 0.7 rmsd) in gray  
 $mF_o-DF_c$  (at 3 rmsd) in purple (negative)  
and green (positive)



## 6.5 Other polymers [i](#)

There are no such residues in this entry.