



Full wwPDB X-ray Structure Validation Report ⓘ

May 21, 2020 – 07:19 am BST

PDB ID : 2R2S
Title : Co(III)bleomycinB2 bound to d(ATTAGTTATAACTAAT) complexed with MMLV RT catalytic fragment
Authors : Goodwin, K.D.; Lewis, M.A.; Long, E.C.; Georgiadis, M.M.
Deposited on : 2007-08-27
Resolution : 2.80 Å(reported)

This is a Full wwPDB X-ray Structure Validation Report for a publicly released PDB entry.

We welcome your comments at validation@mail.wwpdb.org

A user guide is available at

<https://www.wwpdb.org/validation/2017/XrayValidationReportHelp>

with specific help available everywhere you see the ⓘ symbol.

The following versions of software and data (see [references ⓘ](#)) were used in the production of this report:

MolProbity : 4.02b-467
Mogul : 1.8.5 (274361), CSD as541be (2020)
Xtriage (Phenix) : 1.13
EDS : 2.11
buster-report : 1.1.7 (2018)
Percentile statistics : 20191225.v01 (using entries in the PDB archive December 25th 2019)
Refmac : 5.8.0158
CCP4 : 7.0.044 (Gargrove)
Ideal geometry (proteins) : Engh & Huber (2001)
Ideal geometry (DNA, RNA) : Parkinson et al. (1996)
Validation Pipeline (wwPDB-VP) : 2.11

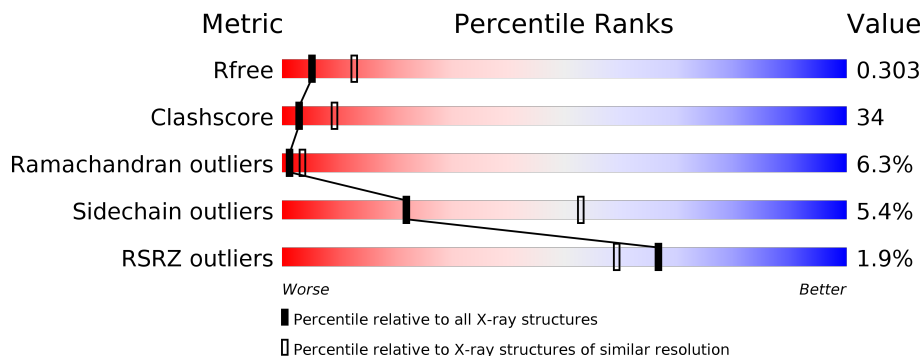
1 Overall quality at a glance

The following experimental techniques were used to determine the structure:

X-RAY DIFFRACTION

The reported resolution of this entry is 2.80 Å.

Percentile scores (ranging between 0-100) for global validation metrics of the entry are shown in the following graphic. The table shows the number of entries on which the scores are based.



Metric	Whole archive (#Entries)	Similar resolution (#Entries, resolution range(Å))
R_{free}	130704	3140 (2.80-2.80)
Clashscore	141614	3569 (2.80-2.80)
Ramachandran outliers	138981	3498 (2.80-2.80)
Sidechain outliers	138945	3500 (2.80-2.80)
RSRZ outliers	127900	3078 (2.80-2.80)

The table below summarises the geometric issues observed across the polymeric chains and their fit to the electron density. The red, orange, yellow and green segments on the lower bar indicate the fraction of residues that contain outliers for ≥ 3 , 2, 1 and 0 types of geometric quality criteria respectively. A grey segment represents the fraction of residues that are not modelled. The numeric value for each fraction is indicated below the corresponding segment, with a dot representing fractions $\leq 5\%$. The upper red bar (where present) indicates the fraction of residues that have poor fit to the electron density. The numeric value is given above the bar.

Mol	Chain	Length	Quality of chain
1	B	7	
2	G	8	
3	A	255	

The following table lists non-polymeric compounds, carbohydrate monomers and non-standard residues in protein, DNA, RNA chains that are outliers for geometric or electron-density-fit criteria:

Mol	Type	Chain	Res	Chirality	Geometry	Clashes	Electron density
5	BLB	B	9	X	-	-	-

2 Entry composition [i](#)

There are 6 unique types of molecules in this entry. The entry contains 2494 atoms, of which 0 are hydrogens and 0 are deuteriums.

In the tables below, the ZeroOcc column contains the number of atoms modelled with zero occupancy, the AltConf column contains the number of residues with at least one atom in alternate conformation and the Trace column contains the number of residues modelled with at most 2 atoms.

- Molecule 1 is a DNA chain called DNA (5'-D(*DAP*DTP*DTP*DAP*DGP*DTP*DT)-3').

Mol	Chain	Residues	Atoms					ZeroOcc	AltConf	Trace
			Total	C	N	O	P			
1	B	7	141	70	23	42	6	0	0	0

- Molecule 2 is a DNA chain called DNA (5'-D(P*DTP*DAP*DAP*DCP*DTP*DAP*DAP*DT)-3').

Mol	Chain	Residues	Atoms					ZeroOcc	AltConf	Trace
			Total	C	N	O	P			
2	G	8	163	79	29	47	8	0	0	0

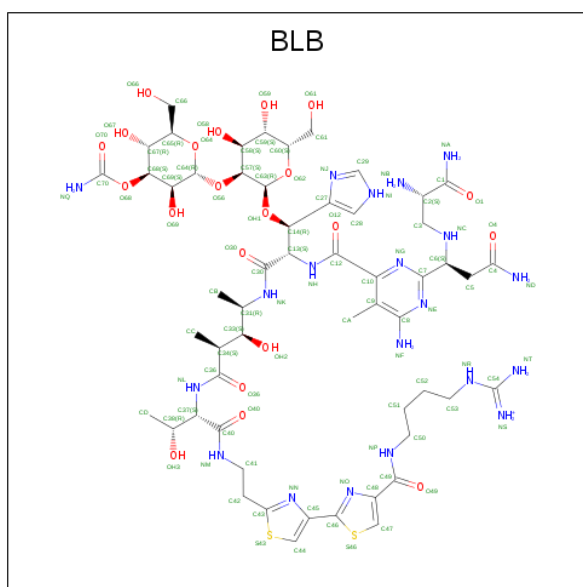
- Molecule 3 is a protein called Reverse transcriptase.

Mol	Chain	Residues	Atoms					ZeroOcc	AltConf	Trace
			Total	C	N	O	S			
3	A	255	2041	1311	356	367	7	0	0	0

- Molecule 4 is COBALT (III) ION (three-letter code: 3CO) (formula: Co).

Mol	Chain	Residues	Atoms		ZeroOcc	AltConf
			Total	Co		
4	B	1	1	1	0	0

- Molecule 5 is BLEOMYCIN B2 (three-letter code: BLB) (formula: C₅₅H₈₅N₂₀O₂₁S₂).



Mol	Chain	Residues	Atoms				ZeroOcc	AltConf	
			Total	C	N	O			S
5	B	1	98	55	20	21	2	0	0

- Molecule 6 is water.

Mol	Chain	Residues	Atoms		ZeroOcc	AltConf
6	B	5	Total	O	0	0
			5	5		
6	G	3	Total	O	0	0
			3	3		
6	A	42	Total	O	0	0
			42	42		

3 Residue-property plots [i](#)

These plots are drawn for all protein, RNA and DNA chains in the entry. The first graphic for a chain summarises the proportions of the various outlier classes displayed in the second graphic. The second graphic shows the sequence view annotated by issues in geometry and electron density. Residues are color-coded according to the number of geometric quality criteria for which they contain at least one outlier: green = 0, yellow = 1, orange = 2 and red = 3 or more. A red dot above a residue indicates a poor fit to the electron density ($RSRZ > 2$). Stretches of 2 or more consecutive residues without any outlier are shown as a green connector. Residues present in the sample, but not in the model, are shown in grey.

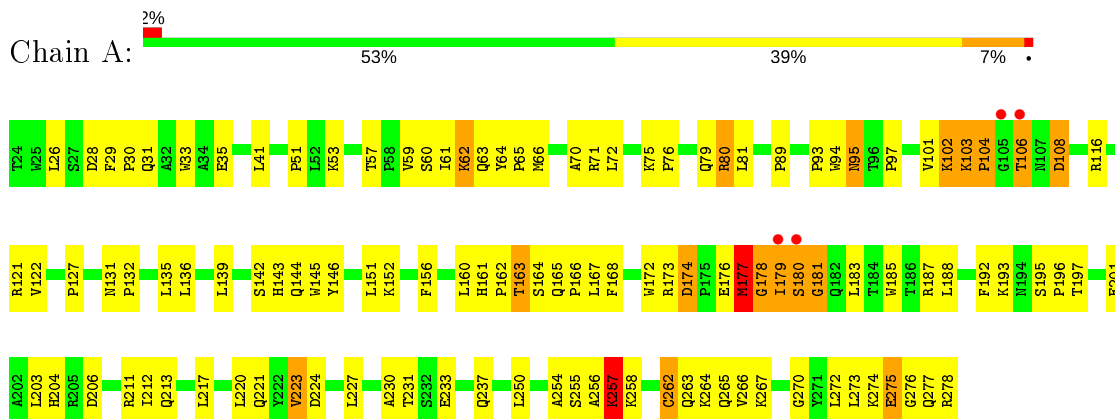
- Molecule 1: DNA (5'-D(*DAP*DTP*DTP*DAP*DGP*DTP*DT)-3')



- Molecule 2: DNA (5'-D(P*DTP*DAP*DAP*DCP*DTP*DAP*DAP*DT)-3')



- Molecule 3: Reverse transcriptase



4 Data and refinement statistics

Property	Value	Source
Space group	P 21 21 2	Depositor
Cell constants a, b, c, α , β , γ	52.30Å 144.51Å 50.30Å 90.00° 90.00° 90.00°	Depositor
Resolution (Å)	50.00 – 2.80 42.37 – 2.78	Depositor EDS
% Data completeness (in resolution range)	91.8 (50.00-2.80) 90.4 (42.37-2.78)	Depositor EDS
R_{merge}	0.09	Depositor
R_{sym}	(Not available)	Depositor
$\langle I/\sigma(I) \rangle$ ¹	2.37 (at 2.77Å)	Xtrriage
Refinement program	CNS	Depositor
R, R_{free}	0.228 , 0.308 0.228 , 0.303	Depositor DCC
R_{free} test set	509 reflections (5.24%)	wwPDB-VP
Wilson B-factor (Å ²)	47.2	Xtrriage
Anisotropy	0.397	Xtrriage
Bulk solvent k_{sol} (e/Å ³), B_{sol} (Å ²)	0.31 , 49.5	EDS
L-test for twinning ²	$\langle L \rangle = 0.48$, $\langle L^2 \rangle = 0.32$	Xtrriage
Estimated twinning fraction	0.034 for l,-k,h	Xtrriage
F_o, F_c correlation	0.92	EDS
Total number of atoms	2494	wwPDB-VP
Average B, all atoms (Å ²)	42.0	wwPDB-VP

Xtrriage's analysis on translational NCS is as follows: *The largest off-origin peak in the Patterson function is 7.27% of the height of the origin peak. No significant pseudotranslation is detected.*

¹ Intensities estimated from amplitudes.

² Theoretical values of $\langle |L| \rangle$, $\langle L^2 \rangle$ for acentric reflections are 0.5, 0.333 respectively for untwinned datasets, and 0.375, 0.2 for perfectly twinned datasets.

5 Model quality [i](#)

5.1 Standard geometry [i](#)

Bond lengths and bond angles in the following residue types are not validated in this section: 3CO, BLB

The Z score for a bond length (or angle) is the number of standard deviations the observed value is removed from the expected value. A bond length (or angle) with $|Z| > 5$ is considered an outlier worth inspection. RMSZ is the root-mean-square of all Z scores of the bond lengths (or angles).

Mol	Chain	Bond lengths		Bond angles	
		RMSZ	# Z >5	RMSZ	# Z >5
1	B	0.51	0/157	0.74	0/241
2	G	0.39	0/181	0.61	0/274
3	A	0.44	0/2097	0.67	0/2858
All	All	0.44	0/2435	0.67	0/3373

Chiral center outliers are detected by calculating the chiral volume of a chiral center and verifying if the center is modelled as a planar moiety or with the opposite hand. A planarity outlier is detected by checking planarity of atoms in a peptide group, atoms in a mainchain group or atoms of a sidechain that are expected to be planar.

Mol	Chain	#Chirality outliers	#Planarity outliers
1	B	0	1

There are no bond length outliers.

There are no bond angle outliers.

There are no chirality outliers.

All (1) planarity outliers are listed below:

Mol	Chain	Res	Type	Group
1	B	6	DT	Sidechain

5.2 Too-close contacts [i](#)

In the following table, the Non-H and H(model) columns list the number of non-hydrogen atoms and hydrogen atoms in the chain respectively. The H(added) column lists the number of hydrogen atoms added and optimized by MolProbity. The Clashes column lists the number of clashes within the asymmetric unit, whereas Symm-Clashes lists symmetry related clashes.

Mol	Chain	Non-H	H(model)	H(added)	Clashes	Symm-Clashes
1	B	141	0	83	17	0
2	G	163	0	93	13	0
3	A	2041	0	2056	129	0
4	B	1	0	0	0	0
5	B	98	0	76	12	0
6	A	42	0	0	3	0
6	B	5	0	0	0	0
6	G	3	0	0	2	0
All	All	2494	0	2308	161	0

The all-atom clashscore is defined as the number of clashes found per 1000 atoms (including hydrogen atoms). The all-atom clashscore for this structure is 34.

All (161) close contacts within the same asymmetric unit are listed below, sorted by their clash magnitude.

Atom-1	Atom-2	Interatomic distance (Å)	Clash overlap (Å)
5:B:9:BLB:C7	5:B:9:BLB:C6	1.76	1.55
2:G:11:DA:H2''	2:G:12:DC:H5'	1.42	1.01
3:A:62:LYS:HZ2	3:A:63:GLN:H	1.00	0.98
3:A:89:PRO:HA	3:A:183:LEU:HD23	1.63	0.80
3:A:174:ASP:HB2	3:A:179:ILE:HD12	1.67	0.77
1:B:2:DT:H2''	1:B:3:DT:H5'	1.65	0.77
3:A:173:ARG:NH1	3:A:181:GLY:HA2	2.00	0.77
3:A:174:ASP:CB	3:A:179:ILE:HD12	2.15	0.76
3:A:121:ARG:HG3	3:A:121:ARG:HH11	1.49	0.76
3:A:102:LYS:HD3	3:A:102:LYS:N	2.00	0.76
3:A:176:GLU:O	3:A:177:MET:HB2	1.86	0.75
3:A:62:LYS:HZ2	3:A:63:GLN:N	1.82	0.75
3:A:265:GLN:HA	3:A:273:LEU:O	1.94	0.68
3:A:62:LYS:NZ	3:A:63:GLN:H	1.85	0.68
3:A:30:PRO:HB2	3:A:31:GLN:HE21	1.59	0.68
3:A:237:GLN:HG2	3:A:262:CYS:SG	2.34	0.68
3:A:233:GLU:O	3:A:237:GLN:HG3	1.94	0.67
3:A:71:ARG:HD3	3:A:174:ASP:HA	1.77	0.67
3:A:80:ARG:HG2	3:A:80:ARG:HH11	1.59	0.67
3:A:257:LYS:HE2	3:A:257:LYS:HA	1.75	0.66
3:A:80:ARG:HB3	3:A:80:ARG:NH1	2.10	0.66
3:A:104:PRO:HG2	3:A:108:ASP:OD1	1.96	0.65
3:A:80:ARG:HB3	3:A:80:ARG:CZ	2.27	0.65
3:A:152:LYS:HD3	3:A:255:SER:HB2	1.78	0.65
3:A:80:ARG:CG	3:A:80:ARG:HH11	2.11	0.63
3:A:51:PRO:HD2	6:A:304:HOH:O	1.97	0.63

Continued on next page...

Continued from previous page...

Atom-1	Atom-2	Interatomic distance (Å)	Clash overlap (Å)
3:A:188:LEU:HD21	3:A:195:SER:HA	1.80	0.63
1:B:1:DA:H1'	1:B:2:DT:H5''	1.83	0.61
3:A:165:GLN:HG2	3:A:185:TRP:O	2.01	0.61
5:B:9:BLB:H44	6:G:1:HOH:O	2.01	0.61
3:A:197:THR:O	3:A:201:GLU:HG3	2.00	0.61
2:G:11:DA:H2''	2:G:12:DC:C5'	2.27	0.60
1:B:5:DG:N3	5:B:9:BLB:NF	2.40	0.60
3:A:144:GLN:HE22	3:A:275:GLU:HA	1.66	0.60
3:A:173:ARG:HH11	3:A:181:GLY:HA2	1.66	0.59
3:A:161:HIS:CD2	3:A:163:THR:HB	2.38	0.58
3:A:143:HIS:HD2	3:A:230:ALA:HA	1.67	0.58
3:A:220:LEU:HB2	3:A:227:LEU:HB3	1.85	0.58
3:A:156:PHE:O	3:A:187:ARG:NH1	2.35	0.58
1:B:5:DG:H4'	5:B:9:BLB:HAC	1.86	0.58
3:A:33:TRP:CE3	3:A:256:ALA:HB2	2.38	0.58
3:A:227:LEU:C	3:A:227:LEU:HD23	2.25	0.58
3:A:104:PRO:CD	3:A:108:ASP:OD2	2.53	0.57
1:B:2:DT:H2''	1:B:3:DT:C5'	2.34	0.57
3:A:173:ARG:O	3:A:174:ASP:HB2	2.05	0.56
3:A:102:LYS:HG3	3:A:106:THR:HA	1.88	0.56
3:A:173:ARG:CZ	3:A:180:SER:O	2.53	0.56
3:A:195:SER:N	3:A:196:PRO:CD	2.69	0.56
3:A:30:PRO:HB2	3:A:31:GLN:NE2	2.21	0.55
3:A:103:LYS:HB2	3:A:104:PRO:HD3	1.87	0.55
3:A:35:GLU:OE1	3:A:256:ALA:HB3	2.06	0.55
1:B:1:DA:H2''	1:B:2:DT:H5''	1.89	0.55
1:B:1:DA:C2'	1:B:2:DT:H5''	2.37	0.55
3:A:146:TYR:CD1	3:A:266:VAL:HG22	2.41	0.54
3:A:144:GLN:HB3	3:A:264:LYS:CE	2.37	0.54
3:A:173:ARG:NH1	3:A:180:SER:O	2.40	0.54
3:A:211:ARG:HH11	3:A:211:ARG:HG2	1.73	0.54
3:A:204:HIS:CA	3:A:221:GLN:HE22	2.21	0.54
3:A:173:ARG:NH1	3:A:181:GLY:CA	2.71	0.54
3:A:263:GLN:HB2	3:A:266:VAL:CG1	2.38	0.54
3:A:26:LEU:HA	3:A:33:TRP:NE1	2.24	0.53
3:A:75:LYS:HB3	3:A:76:PRO:HD3	1.89	0.53
3:A:177:MET:SD	3:A:179:ILE:HG13	2.48	0.53
3:A:267:LYS:C	3:A:267:LYS:HD3	2.29	0.53
3:A:272:LEU:H	3:A:278:ARG:HD3	1.72	0.53
1:B:1:DA:H2''	1:B:2:DT:C5'	2.39	0.53
5:B:9:BLB:O49	2:G:10:DA:H2''	2.08	0.53

Continued on next page...

Continued from previous page...

Atom-1	Atom-2	Interatomic distance (Å)	Clash overlap (Å)
3:A:53:LYS:HE3	3:A:122:VAL:O	2.08	0.53
5:B:9:BLB:H3X	2:G:13:DT:H4'	1.91	0.52
2:G:15:DA:C8	2:G:16:DT:H72	2.45	0.52
3:A:152:LYS:HE3	3:A:258:LYS:HZ1	1.75	0.52
3:A:221:GLN:HG2	6:A:290:HOH:O	2.10	0.52
3:A:220:LEU:HD22	3:A:227:LEU:HD22	1.92	0.51
3:A:28:ASP:C	3:A:30:PRO:HD3	2.30	0.51
3:A:163:THR:O	3:A:166:PRO:HD2	2.10	0.51
5:B:9:BLB:C27	5:B:9:BLB:HB1	2.19	0.51
3:A:144:GLN:NE2	3:A:275:GLU:HA	2.26	0.51
3:A:144:GLN:HB3	3:A:264:LYS:HE2	1.93	0.51
3:A:204:HIS:N	3:A:221:GLN:HE22	2.07	0.51
3:A:206:ASP:HB3	3:A:250:LEU:HD13	1.93	0.50
3:A:195:SER:HB2	3:A:196:PRO:HD3	1.93	0.50
3:A:62:LYS:HA	3:A:62:LYS:NZ	2.26	0.50
3:A:35:GLU:HG3	6:A:300:HOH:O	2.12	0.50
3:A:102:LYS:HD3	3:A:102:LYS:H	1.77	0.49
2:G:15:DA:C2'	2:G:16:DT:H72	2.42	0.49
3:A:176:GLU:O	3:A:177:MET:CB	2.59	0.49
3:A:102:LYS:HG3	3:A:106:THR:O	2.13	0.49
3:A:192:PHE:HB3	3:A:195:SER:OG	2.13	0.49
3:A:121:ARG:NH1	3:A:121:ARG:HG3	2.22	0.48
3:A:164:SER:O	3:A:167:LEU:HD13	2.13	0.48
3:A:132:PRO:O	3:A:135:LEU:HB3	2.13	0.48
2:G:16:DT:H2'	6:G:19:HOH:O	2.12	0.48
3:A:160:LEU:HD11	3:A:168:PHE:CE2	2.48	0.48
3:A:211:ARG:NH1	3:A:211:ARG:HG2	2.29	0.47
3:A:172:TRP:N	3:A:181:GLY:O	2.38	0.47
3:A:132:PRO:O	3:A:136:LEU:HD23	2.14	0.47
3:A:177:MET:O	3:A:178:GLY:C	2.53	0.47
3:A:29:PHE:N	3:A:30:PRO:HD3	2.29	0.47
1:B:3:DT:O4'	3:A:116:ARG:NH1	2.48	0.47
3:A:62:LYS:HA	3:A:62:LYS:HZ3	1.79	0.47
3:A:217:LEU:CD2	3:A:230:ALA:HB2	2.45	0.47
1:B:2:DT:H6	1:B:2:DT:H5'	1.80	0.47
3:A:102:LYS:HG3	3:A:106:THR:CA	2.45	0.47
3:A:162:PRO:O	3:A:166:PRO:HD3	2.14	0.47
3:A:146:TYR:HD1	3:A:266:VAL:HG22	1.79	0.46
2:G:13:DT:H2''	2:G:14:DA:C8	2.50	0.46
3:A:80:ARG:NH1	3:A:80:ARG:CB	2.77	0.46
3:A:152:LYS:HE3	3:A:258:LYS:NZ	2.31	0.46

Continued on next page...

Continued from previous page...

Atom-1	Atom-2	Interatomic distance (Å)	Clash overlap (Å)
3:A:80:ARG:CG	3:A:80:ARG:NH1	2.73	0.46
5:B:9:BLB:C3	2:G:13:DT:H4'	2.46	0.46
3:A:59:VAL:HG13	3:A:59:VAL:O	2.14	0.46
2:G:15:DA:H2''	2:G:16:DT:C7	2.46	0.45
3:A:262:CYS:C	3:A:263:GLN:HG2	2.37	0.45
3:A:66:MET:HG2	3:A:70:ALA:HB3	1.98	0.45
3:A:139:LEU:C	3:A:139:LEU:HD23	2.37	0.45
3:A:161:HIS:ND1	3:A:162:PRO:HD2	2.32	0.45
3:A:203:LEU:HD12	3:A:203:LEU:HA	1.80	0.45
1:B:5:DG:H1'	5:B:9:BLB:NF	2.32	0.45
3:A:71:ARG:CD	3:A:174:ASP:HA	2.45	0.45
3:A:173:ARG:NH2	3:A:180:SER:O	2.50	0.45
3:A:204:HIS:HA	3:A:221:GLN:HE22	1.82	0.44
3:A:101:VAL:HG12	3:A:102:LYS:N	2.33	0.44
3:A:161:HIS:HD2	3:A:163:THR:HB	1.81	0.44
2:G:15:DA:H2''	2:G:16:DT:H72	1.99	0.44
3:A:267:LYS:HE2	3:A:270:GLY:HA2	1.99	0.44
3:A:272:LEU:O	3:A:278:ARG:HB2	2.17	0.44
3:A:145:TRP:HD1	3:A:231:THR:O	2.00	0.44
3:A:101:VAL:CG1	3:A:102:LYS:N	2.81	0.44
3:A:165:GLN:N	3:A:166:PRO:CD	2.81	0.44
1:B:1:DA:C1'	1:B:2:DT:H5''	2.47	0.44
3:A:174:ASP:OD2	3:A:179:ILE:HD12	2.17	0.44
3:A:263:GLN:HB2	3:A:266:VAL:HG13	1.99	0.44
3:A:61:ILE:CG2	3:A:97:PRO:HD3	2.48	0.44
1:B:2:DT:H1'	1:B:3:DT:H5''	1.99	0.43
1:B:6:DT:O2	5:B:9:BLB:H1E	2.18	0.43
3:A:276:GLY:C	3:A:277:GLN:OE1	2.57	0.43
1:B:3:DT:H2''	1:B:4:DA:C8	2.54	0.43
2:G:11:DA:C2'	2:G:12:DC:H5'	2.31	0.43
3:A:94:TRP:O	3:A:95:ASN:HB2	2.17	0.43
3:A:151:LEU:HA	3:A:254:ALA:HA	2.00	0.43
3:A:145:TRP:CZ2	3:A:264:LYS:HD2	2.54	0.43
3:A:64:TYR:HB3	3:A:65:PRO:HD2	2.00	0.43
3:A:102:LYS:N	3:A:102:LYS:CD	2.69	0.42
3:A:174:ASP:CG	3:A:179:ILE:HD12	2.38	0.42
3:A:233:GLU:HG2	3:A:233:GLU:O	2.19	0.42
3:A:103:LYS:H	3:A:104:PRO:CD	2.33	0.42
3:A:163:THR:HG22	3:A:164:SER:N	2.35	0.42
3:A:274:LYS:C	3:A:276:GLY:H	2.23	0.42
3:A:81:LEU:HD23	3:A:81:LEU:HA	1.92	0.41

Continued on next page...

Continued from previous page...

Atom-1	Atom-2	Interatomic distance (Å)	Clash overlap (Å)
3:A:223:VAL:HG12	3:A:224:ASP:N	2.35	0.41
3:A:144:GLN:CA	3:A:144:GLN:HE21	2.33	0.41
3:A:29:PHE:O	3:A:33:TRP:CD1	2.74	0.41
3:A:60:SER:HB2	3:A:93:PRO:O	2.21	0.41
1:B:6:DT:O2	5:B:9:BLB:H5X	2.21	0.41
3:A:79:GLN:NE2	3:A:79:GLN:HA	2.36	0.41
3:A:144:GLN:HA	3:A:144:GLN:HE21	1.85	0.41
1:B:4:DA:H2''	1:B:5:DG:O5'	2.21	0.41
3:A:212:ILE:HG22	3:A:213:GLN:N	2.36	0.40
5:B:9:BLB:ND	2:G:12:DC:O4'	2.55	0.40
3:A:177:MET:O	3:A:179:ILE:N	2.54	0.40
3:A:167:LEU:HD12	3:A:167:LEU:N	2.35	0.40

There are no symmetry-related clashes.

5.3 Torsion angles [i](#)

5.3.1 Protein backbone [i](#)

In the following table, the Percentiles column shows the percent Ramachandran outliers of the chain as a percentile score with respect to all X-ray entries followed by that with respect to entries of similar resolution.

The Analysed column shows the number of residues for which the backbone conformation was analysed, and the total number of residues.

Mol	Chain	Analysed	Favoured	Allowed	Outliers	Percentiles
3	A	253/255 (99%)	220 (87%)	17 (7%)	16 (6%)	1 3

All (16) Ramachandran outliers are listed below:

Mol	Chain	Res	Type
3	A	177	MET
3	A	179	ILE
3	A	180	SER
3	A	104	PRO
3	A	106	THR
3	A	108	ASP
3	A	174	ASP
3	A	178	GLY
3	A	262	CYS

Continued on next page...

Continued from previous page...

Mol	Chain	Res	Type
3	A	95	ASN
3	A	257	LYS
3	A	223	VAL
3	A	193	LYS
3	A	103	LYS
3	A	181	GLY
3	A	127	PRO

5.3.2 Protein sidechains [i](#)

In the following table, the Percentiles column shows the percent sidechain outliers of the chain as a percentile score with respect to all X-ray entries followed by that with respect to entries of similar resolution.

The Analysed column shows the number of residues for which the sidechain conformation was analysed, and the total number of residues.

Mol	Chain	Analysed	Rotameric	Outliers	Percentiles
3	A	224/224 (100%)	212 (95%)	12 (5%)	22 53

All (12) residues with a non-rotameric sidechain are listed below:

Mol	Chain	Res	Type
3	A	41	LEU
3	A	57	THR
3	A	62	LYS
3	A	72	LEU
3	A	80	ARG
3	A	102	LYS
3	A	131	ASN
3	A	142	SER
3	A	163	THR
3	A	177	MET
3	A	257	LYS
3	A	275	GLU

Some sidechains can be flipped to improve hydrogen bonding and reduce clashes. All (8) such sidechains are listed below:

Mol	Chain	Res	Type
3	A	31	GLN
3	A	79	GLN

Continued on next page...

Continued from previous page...

Mol	Chain	Res	Type
3	A	84	GLN
3	A	143	HIS
3	A	144	GLN
3	A	204	HIS
3	A	213	GLN
3	A	221	GLN

5.3.3 RNA [i](#)

There are no RNA molecules in this entry.

5.4 Non-standard residues in protein, DNA, RNA chains [i](#)

There are no non-standard protein/DNA/RNA residues in this entry.

5.5 Carbohydrates [i](#)

There are no carbohydrates in this entry.

5.6 Ligand geometry [i](#)

Of 2 ligands modelled in this entry, 1 is monoatomic - leaving 1 for Mogul analysis.

In the following table, the Counts columns list the number of bonds (or angles) for which Mogul statistics could be retrieved, the number of bonds (or angles) that are observed in the model and the number of bonds (or angles) that are defined in the Chemical Component Dictionary. The Link column lists molecule types, if any, to which the group is linked. The Z score for a bond length (or angle) is the number of standard deviations the observed value is removed from the expected value. A bond length (or angle) with $|Z| > 2$ is considered an outlier worth inspection. RMSZ is the root-mean-square of all Z scores of the bond lengths (or angles).

Mol	Type	Chain	Res	Link	Bond lengths			Bond angles		
					Counts	RMSZ	$\# Z > 2$	Counts	RMSZ	$\# Z > 2$
5	BLB	B	9	4	94,103,103	4.27	42 (44%)	109,145,145	4.70	50 (45%)

In the following table, the Chirals column lists the number of chiral outliers, the number of chiral centers analysed, the number of these observed in the model and the number defined in the Chemical Component Dictionary. Similar counts are reported in the Torsion and Rings columns. '-' means no outliers of that kind were identified.

Mol	Type	Chain	Res	Link	Chirals	Torsions	Rings
5	BLB	B	9	4	3/3/28/35	40/88/144/144	0/6/6/6

All (42) bond length outliers are listed below:

Mol	Chain	Res	Type	Atoms	Z	Observed(Å)	Ideal(Å)
5	B	9	BLB	C46-NO	12.42	1.49	1.31
5	B	9	BLB	C7-C6	12.35	1.76	1.50
5	B	9	BLB	C7-NG	12.20	1.55	1.34
5	B	9	BLB	C10-NG	9.97	1.55	1.34
5	B	9	BLB	C8-NE	9.07	1.48	1.35
5	B	9	BLB	C34-C33	-9.05	1.35	1.53
5	B	9	BLB	C13-NH	8.77	1.64	1.45
5	B	9	BLB	C7-NE	8.36	1.48	1.34
5	B	9	BLB	CD-C38	-7.92	1.28	1.51
5	B	9	BLB	C27-C14	7.60	1.57	1.51
5	B	9	BLB	C45-NN	7.51	1.60	1.37
5	B	9	BLB	C13-C14	7.24	1.64	1.53
5	B	9	BLB	C30-NK	7.23	1.50	1.34
5	B	9	BLB	OH3-C38	-6.89	1.24	1.43
5	B	9	BLB	C54-NR	6.12	1.45	1.33
5	B	9	BLB	C12-NH	5.99	1.47	1.34
5	B	9	BLB	CC-C34	-5.92	1.40	1.53
5	B	9	BLB	CB-C31	-5.21	1.41	1.52
5	B	9	BLB	C10-C12	-4.97	1.43	1.50
5	B	9	BLB	O1-C1	-4.75	1.14	1.23
5	B	9	BLB	C46-S46	-4.71	1.67	1.73
5	B	9	BLB	O30-C30	4.67	1.32	1.23
5	B	9	BLB	C49-NP	4.59	1.43	1.33
5	B	9	BLB	OH2-C33	-4.52	1.32	1.43
5	B	9	BLB	C53-NR	4.41	1.56	1.46
5	B	9	BLB	C13-C30	-4.41	1.41	1.52
5	B	9	BLB	C5-C4	4.12	1.62	1.51
5	B	9	BLB	C36-NL	3.98	1.42	1.34
5	B	9	BLB	C31-NK	3.90	1.54	1.46
5	B	9	BLB	C37-NL	3.60	1.53	1.45
5	B	9	BLB	C6-NC	3.31	1.53	1.47
5	B	9	BLB	C42-C43	-3.12	1.47	1.49
5	B	9	BLB	CA-C9	2.94	1.57	1.51
5	B	9	BLB	C54-NS	2.80	1.43	1.32
5	B	9	BLB	C50-NP	2.76	1.52	1.46
5	B	9	BLB	C41-NM	-2.73	1.39	1.46
5	B	9	BLB	C5-C6	2.47	1.59	1.53
5	B	9	BLB	C45-C46	2.44	1.56	1.48

Continued on next page...

Continued from previous page...

Mol	Chain	Res	Type	Atoms	Z	Observed(Å)	Ideal(Å)
5	B	9	BLB	C48-NO	2.43	1.45	1.37
5	B	9	BLB	C3-NC	-2.31	1.41	1.47
5	B	9	BLB	C9-C8	2.15	1.48	1.43
5	B	9	BLB	C58-C57	2.05	1.57	1.52

All (50) bond angle outliers are listed below:

Mol	Chain	Res	Type	Atoms	Z	Observed(°)	Ideal(°)
5	B	9	BLB	C33-C34-C36	16.80	135.13	109.37
5	B	9	BLB	C41-NM-C40	15.98	151.10	122.59
5	B	9	BLB	C37-C40-NM	14.50	141.41	116.41
5	B	9	BLB	C34-C36-NL	13.84	137.39	116.44
5	B	9	BLB	C63-OH1-C14	12.72	135.69	114.99
5	B	9	BLB	C31-NK-C30	10.06	139.99	122.67
5	B	9	BLB	C42-C41-NM	9.10	139.46	111.99
5	B	9	BLB	O36-C36-NL	-8.97	106.31	122.93
5	B	9	BLB	CB-C31-NK	-8.84	94.45	109.70
5	B	9	BLB	O30-C30-NK	-8.72	106.79	122.93
5	B	9	BLB	C45-C44-S43	8.34	122.03	111.79
5	B	9	BLB	O40-C40-NM	-8.07	105.66	122.99
5	B	9	BLB	C48-C49-NP	-7.76	104.73	115.59
5	B	9	BLB	C12-C10-NG	-7.05	109.41	115.99
5	B	9	BLB	O4-C4-ND	-6.92	103.62	122.50
5	B	9	BLB	C38-C37-C40	6.30	125.16	111.28
5	B	9	BLB	CB-C31-C33	-5.80	105.53	112.30
5	B	9	BLB	C3-C2-C1	5.66	118.63	108.66
5	B	9	BLB	C5-C6-C7	5.50	119.72	110.64
5	B	9	BLB	OH2-C33-C34	5.12	120.72	108.82
5	B	9	BLB	CC-C34-C33	-5.06	103.93	112.37
5	B	9	BLB	NE-C7-NG	-5.06	118.70	126.00
5	B	9	BLB	C37-NL-C36	5.02	134.70	121.89
5	B	9	BLB	O30-C30-C13	-4.66	111.09	120.74
5	B	9	BLB	C40-C37-NL	4.47	122.53	110.36
5	B	9	BLB	C13-NH-C12	-4.22	113.89	121.52
5	B	9	BLB	C33-C31-NK	4.21	117.72	109.56
5	B	9	BLB	O49-C49-C48	3.87	129.51	121.08
5	B	9	BLB	O40-C40-C37	-3.78	112.93	120.74
5	B	9	BLB	OH2-C33-C31	-3.78	99.10	109.08
5	B	9	BLB	C2-C1-NA	3.74	123.10	116.68
5	B	9	BLB	C48-C47-S46	3.69	116.32	111.79
5	B	9	BLB	O4-C4-C5	-3.52	113.45	120.87
5	B	9	BLB	C47-C48-C49	3.52	145.40	126.35

Continued on next page...

Continued from previous page...

Mol	Chain	Res	Type	Atoms	Z	Observed(°)	Ideal(°)
5	B	9	BLB	C5-C4-ND	-3.41	108.00	116.21
5	B	9	BLB	O1-C1-NA	-3.29	117.28	123.00
5	B	9	BLB	NR-C54-NS	3.26	126.43	120.70
5	B	9	BLB	O12-C12-NH	3.19	128.32	122.45
5	B	9	BLB	OH3-C38-CD	-3.16	100.40	109.74
5	B	9	BLB	OH1-C14-C27	2.95	115.57	110.59
5	B	9	BLB	CA-C9-C10	2.74	128.61	122.87
5	B	9	BLB	CD-C38-C37	2.74	117.81	112.29
5	B	9	BLB	O36-C36-C34	-2.62	116.29	121.02
5	B	9	BLB	O61-C61-C60	-2.35	103.22	111.29
5	B	9	BLB	C50-NP-C49	2.31	127.34	122.08
5	B	9	BLB	O68-C70-O70	2.28	126.00	123.69
5	B	9	BLB	O62-C60-C61	2.27	112.09	106.44
5	B	9	BLB	NF-C8-NE	-2.24	113.86	117.03
5	B	9	BLB	C41-C42-C43	2.21	120.52	112.55
5	B	9	BLB	NT-C54-NR	-2.04	114.49	119.19

All (3) chirality outliers are listed below:

Mol	Chain	Res	Type	Atom
5	B	9	BLB	C33
5	B	9	BLB	C37
5	B	9	BLB	C31

All (40) torsion outliers are listed below:

Mol	Chain	Res	Type	Atoms
5	B	9	BLB	NA-C1-C2-C3
5	B	9	BLB	O1-C1-C2-C3
5	B	9	BLB	C5-C6-C7-NG
5	B	9	BLB	C5-C6-C7-NE
5	B	9	BLB	C30-C13-C14-C27
5	B	9	BLB	C30-C13-C14-OH1
5	B	9	BLB	C13-C30-NK-C31
5	B	9	BLB	O30-C30-NK-C31
5	B	9	BLB	C33-C31-NK-C30
5	B	9	BLB	OH2-C33-C34-C36
5	B	9	BLB	C31-C33-C34-C36
5	B	9	BLB	C34-C36-NL-C37
5	B	9	BLB	C38-C37-C40-O40
5	B	9	BLB	C38-C37-C40-NM
5	B	9	BLB	NL-C37-C38-OH3

Continued on next page...

Continued from previous page...

Mol	Chain	Res	Type	Atoms
5	B	9	BLB	NL-C37-C38-CD
5	B	9	BLB	C48-C49-NP-C50
5	B	9	BLB	NS-C54-NR-C53
5	B	9	BLB	NT-C54-NR-C53
5	B	9	BLB	O36-C36-NL-C37
5	B	9	BLB	O49-C49-NP-C50
5	B	9	BLB	C51-C52-C53-NR
5	B	9	BLB	NP-C50-C51-C52
5	B	9	BLB	C37-C40-NM-C41
5	B	9	BLB	O40-C40-NM-C41
5	B	9	BLB	OH2-C33-C34-CC
5	B	9	BLB	C31-C33-C34-CC
5	B	9	BLB	NM-C41-C42-C43
5	B	9	BLB	NL-C37-C40-O40
5	B	9	BLB	C5-C6-NC-C3
5	B	9	BLB	C27-C14-OH1-C63
5	B	9	BLB	NL-C37-C40-NM
5	B	9	BLB	CB-C31-C33-C34
5	B	9	BLB	C40-C37-NL-C36
5	B	9	BLB	C1-C2-C3-NC
5	B	9	BLB	C58-C57-O56-C64
5	B	9	BLB	NH-C13-C14-OH1
5	B	9	BLB	O1-C1-C2-NB
5	B	9	BLB	NH-C13-C14-C27
5	B	9	BLB	NH-C13-C30-NK

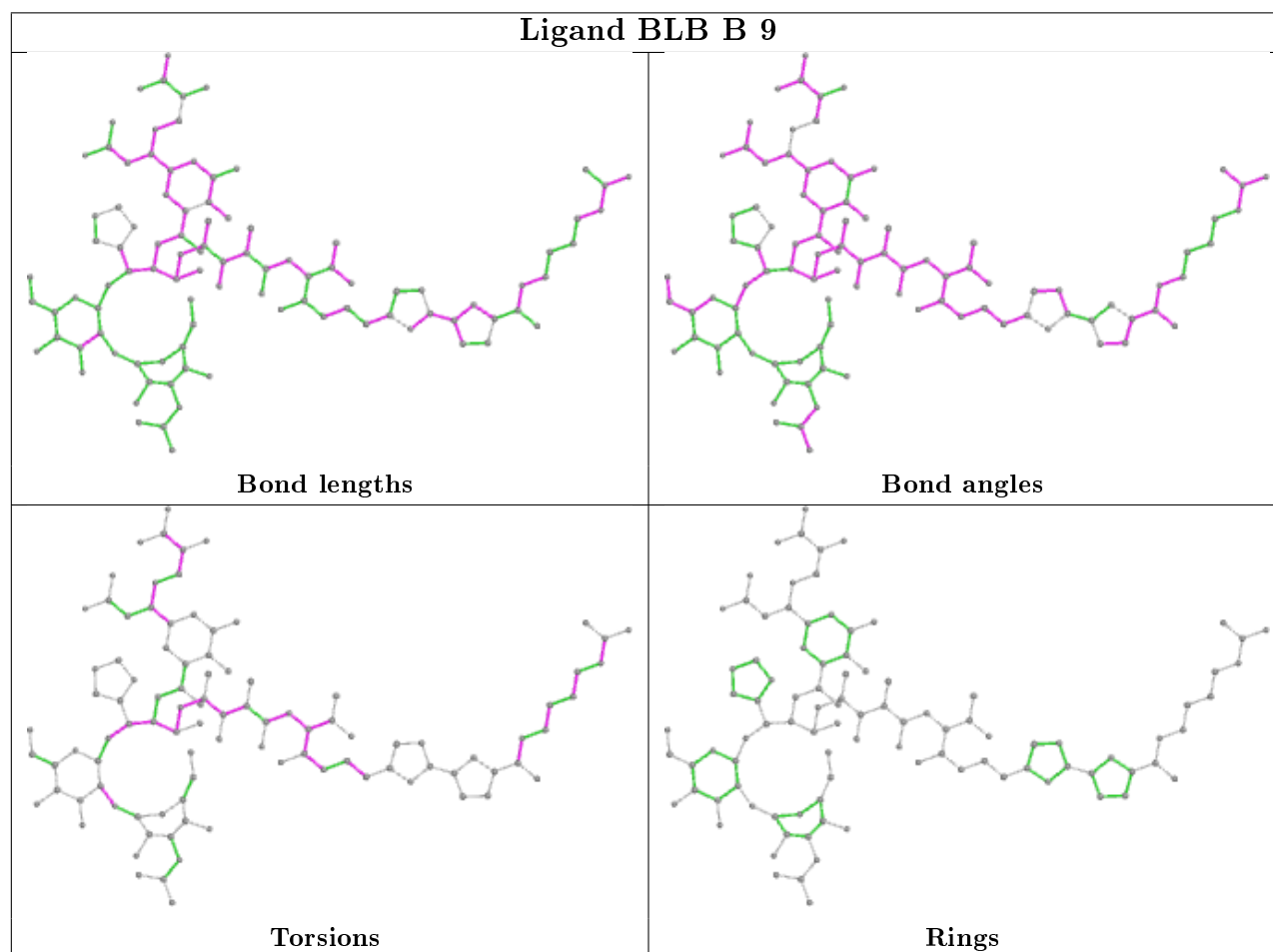
There are no ring outliers.

1 monomer is involved in 12 short contacts:

Mol	Chain	Res	Type	Clashes	Symm-Clashes
5	B	9	BLB	12	0

The following is a two-dimensional graphical depiction of Mogul quality analysis of bond lengths, bond angles, torsion angles, and ring geometry for all instances of the Ligand of Interest. In addition, ligands with molecular weight > 250 and outliers as shown on the validation Tables will also be included. For torsion angles, if less than 5% of the Mogul distribution of torsion angles is within 10 degrees of the torsion angle in question, then that torsion angle is considered an outlier. Any bond that is central to one or more torsion angles identified as an outlier by Mogul will be highlighted in the graph. For rings, the root-mean-square deviation (RMSD) between the ring in question and similar rings identified by Mogul is calculated over all ring torsion angles. If the average RMSD is greater than 60 degrees and the minimal RMSD between the ring in question and any Mogul-identified rings is also greater than 60 degrees, then that ring is considered an outlier.

The outliers are highlighted in purple. The color gray indicates Mogul did not find sufficient equivalents in the CSD to analyse the geometry.



5.7 Other polymers [\(i\)](#)

There are no such residues in this entry.

5.8 Polymer linkage issues [\(i\)](#)

The following chains have linkage breaks:

Mol	Chain	Number of breaks
2	G	1

All chain breaks are listed below:

Model	Chain	Residue-1	Atom-1	Residue-2	Atom-2	Distance (Å)
1	G	9:DT	O3'	10:DA	P	3.40

6 Fit of model and data [i](#)

6.1 Protein, DNA and RNA chains [i](#)

In the following table, the column labelled '#RSRZ > 2' contains the number (and percentage) of RSRZ outliers, followed by percent RSRZ outliers for the chain as percentile scores relative to all X-ray entries and entries of similar resolution. The OWAB column contains the minimum, median, 95th percentile and maximum values of the occupancy-weighted average B-factor per residue. The column labelled 'Q < 0.9' lists the number of (and percentage) of residues with an average occupancy less than 0.9.

Mol	Chain	Analysed	<RSRZ>	#RSRZ>2	OWAB(Å ²)	Q<0.9
1	B	7/7 (100%)	-0.40	0 100 100	31, 35, 55, 74	0
2	G	8/8 (100%)	0.11	1 (12%) 3 2	32, 56, 82, 85	0
3	A	255/255 (100%)	-0.17	4 (1%) 72 66	19, 37, 69, 86	0
All	All	270/270 (100%)	-0.17	5 (1%) 66 59	19, 37, 69, 86	0

All (5) RSRZ outliers are listed below:

Mol	Chain	Res	Type	RSRZ
3	A	180	SER	4.1
3	A	105	GLY	3.5
3	A	106	THR	2.7
2	G	10	DA	2.6
3	A	179	ILE	2.1

6.2 Non-standard residues in protein, DNA, RNA chains [i](#)

There are no non-standard protein/DNA/RNA residues in this entry.

6.3 Carbohydrates [i](#)

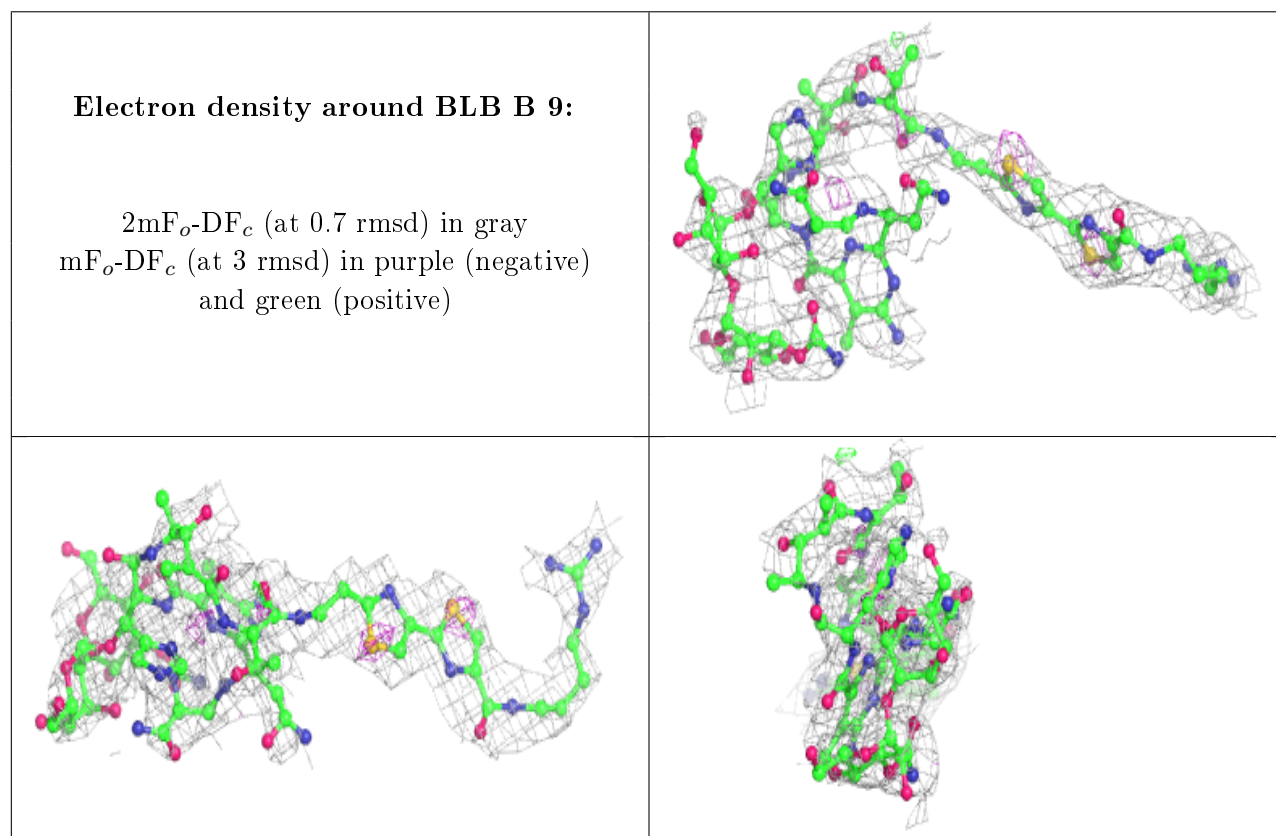
There are no carbohydrates in this entry.

6.4 Ligands [i](#)

In the following table, the Atoms column lists the number of modelled atoms in the group and the number defined in the chemical component dictionary. The B-factors column lists the minimum, median, 95th percentile and maximum values of B factors of atoms in the group. The column labelled 'Q < 0.9' lists the number of atoms with occupancy less than 0.9.

Mol	Type	Chain	Res	Atoms	RSCC	RSR	B-factors(\AA^2)	Q<0.9
4	3CO	B	8	1/1	0.78	0.09	94,94,94,94	0
5	BLB	B	9	98/98	0.83	0.26	45,91,96,97	0

The following is a graphical depiction of the model fit to experimental electron density of all instances of the Ligand of Interest. In addition, ligands with molecular weight > 250 and outliers as shown on the geometry validation Tables will also be included. Each fit is shown from different orientation to approximate a three-dimensional view.



6.5 Other polymers [i](#)

There are no such residues in this entry.