



# Full wwPDB X-ray Structure Validation Report ⓘ

Aug 21, 2023 – 08:21 PM EDT

PDB ID : 2Q2V  
Title : Structure of D-3-Hydroxybutyrate Dehydrogenase from Pseudomonas putida  
Authors : Paithankar, K.S.; Feller, C.; Kuettner, E.B.; Keim, A.; Grunow, M.; Strater, N.  
Deposited on : 2007-05-29  
Resolution : 1.90 Å(reported)

This is a Full wwPDB X-ray Structure Validation Report for a publicly released PDB entry.

We welcome your comments at [validation@mail.wwpdb.org](mailto:validation@mail.wwpdb.org)

A user guide is available at

<https://www.wwpdb.org/validation/2017/XrayValidationReportHelp>

with specific help available everywhere you see the ⓘ symbol.

The types of validation reports are described at

<http://www.wwpdb.org/validation/2017/FAQs#types>.

---

The following versions of software and data (see [references ⓘ](#)) were used in the production of this report:

MolProbity : 4.02b-467  
Mogul : 1.8.5 (274361), CSD as541be (2020)  
Xtriage (Phenix) : 1.13  
EDS : 2.35  
buster-report : 1.1.7 (2018)  
Percentile statistics : 20191225.v01 (using entries in the PDB archive December 25th 2019)  
Refmac : 5.8.0158  
CCP4 : 7.0.044 (Gargrove)  
Ideal geometry (proteins) : Engh & Huber (2001)  
Ideal geometry (DNA, RNA) : Parkinson et al. (1996)  
Validation Pipeline (wwPDB-VP) : 2.35

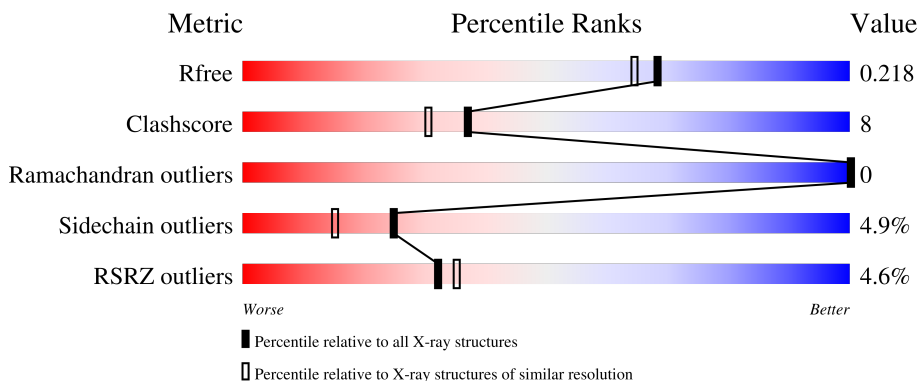
# 1 Overall quality at a glance

The following experimental techniques were used to determine the structure:

*X-RAY DIFFRACTION*


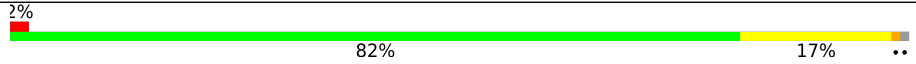
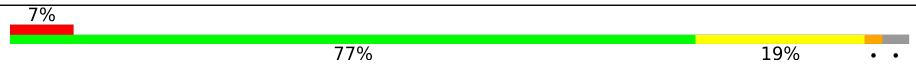

The reported resolution of this entry is 1.90 Å.

Percentile scores (ranging between 0-100) for global validation metrics of the entry are shown in the following graphic. The table shows the number of entries on which the scores are based.



Metric	Whole archive (#Entries)	Similar resolution (#Entries, resolution range(Å))
$R_{free}$	130704	6207 (1.90-1.90)
Clashscore	141614	6847 (1.90-1.90)
Ramachandran outliers	138981	6760 (1.90-1.90)
Sidechain outliers	138945	6760 (1.90-1.90)
RSRZ outliers	127900	6082 (1.90-1.90)

The table below summarises the geometric issues observed across the polymeric chains and their fit to the electron density. The red, orange, yellow and green segments of the lower bar indicate the fraction of residues that contain outliers for  $\geq 3$ , 2, 1 and 0 types of geometric quality criteria respectively. A grey segment represents the fraction of residues that are not modelled. The numeric value for each fraction is indicated below the corresponding segment, with a dot representing fractions  $\leq 5\%$ . The upper red bar (where present) indicates the fraction of residues that have poor fit to the electron density. The numeric value is given above the bar.

Mol	Chain	Length	Quality of chain
1	A	255	 3% 88% 10% ..
1	B	255	 2% 82% 17% ..
1	C	255	 7% 77% 19% ..
1	D	255	 6% 77% 18% ..

## 2 Entry composition [i](#)

There are 3 unique types of molecules in this entry. The entry contains 7953 atoms, of which 0 are hydrogens and 0 are deuteriums.

In the tables below, the ZeroOcc column contains the number of atoms modelled with zero occupancy, the AltConf column contains the number of residues with at least one atom in alternate conformation and the Trace column contains the number of residues modelled with at most 2 atoms.

- Molecule 1 is a protein called Beta-D-hydroxybutyrate dehydrogenase.

Mol	Chain	Residues	Atoms					ZeroOcc	AltConf	Trace
			Total	C	N	O	S			
1	A	255	Total	C	N	O	S	0	0	0
			1869	1185	336	344	4			
1	B	253	Total	C	N	O	S	0	0	0
			1857	1179	333	341	4			
1	C	248	Total	C	N	O	S	0	0	0
			1828	1162	328	334	4			
1	D	247	Total	C	N	O	S	0	0	0
			1820	1156	327	333	4			

- Molecule 2 is NICOTINAMIDE-ADENINE-DINUCLEOTIDE (three-letter code: NAD) (formula:  $C_{21}H_{27}N_7O_{14}P_2$ ).



Mol	Chain	Residues	Atoms				ZeroOcc	AltConf	
			Total	C	N	O			P
2	B	1	Total	C	N	O	P	0	0
			44	21	7	14	2		
2	C	1	Total	C	N	O	P	0	0
			44	21	7	14	2		

*Continued on next page...*

*Continued from previous page...*

Mol	Chain	Residues	Atoms					ZeroOcc	AltConf
			Total	C	N	O	P		
2	D	1	44	21	7	14	2	0	0

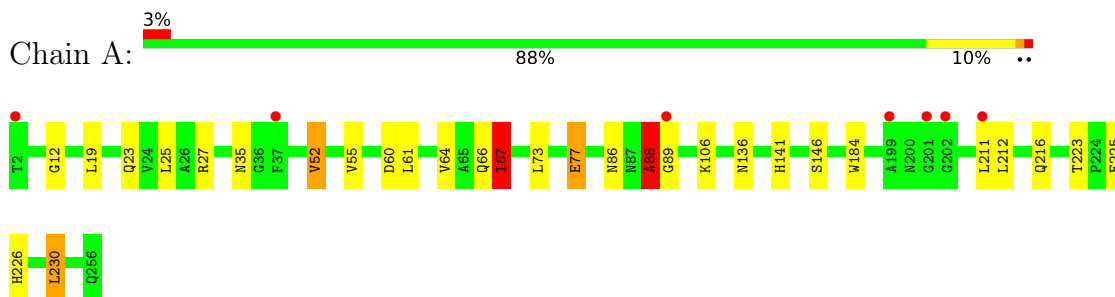
- Molecule 3 is water.

Mol	Chain	Residues	Atoms		ZeroOcc	AltConf
3	A	150	Total 150	O 150	0	0
3	B	144	Total 144	O 144	0	0
3	C	75	Total 75	O 75	0	0
3	D	78	Total 78	O 78	0	0

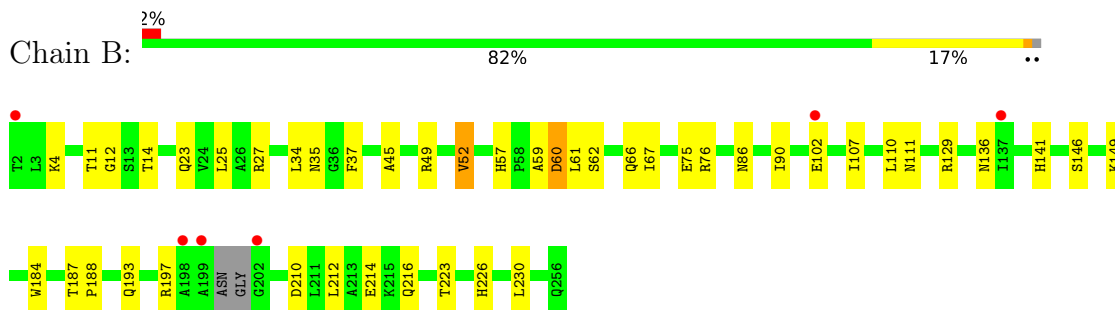
### 3 Residue-property plots [i](#)

These plots are drawn for all protein, RNA, DNA and oligosaccharide chains in the entry. The first graphic for a chain summarises the proportions of the various outlier classes displayed in the second graphic. The second graphic shows the sequence view annotated by issues in geometry and electron density. Residues are color-coded according to the number of geometric quality criteria for which they contain at least one outlier: green = 0, yellow = 1, orange = 2 and red = 3 or more. A red dot above a residue indicates a poor fit to the electron density ( $RSRZ > 2$ ). Stretches of 2 or more consecutive residues without any outlier are shown as a green connector. Residues present in the sample, but not in the model, are shown in grey.

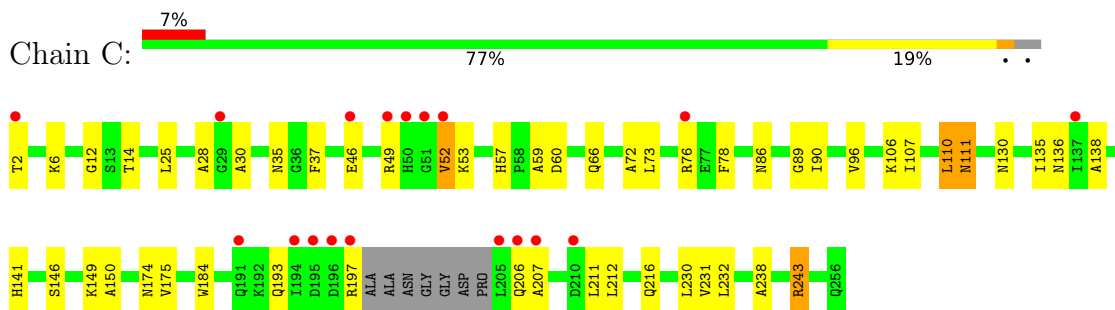
- Molecule 1: Beta-D-hydroxybutyrate dehydrogenase



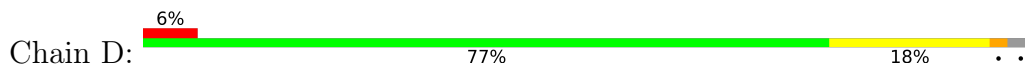
- Molecule 1: Beta-D-hydroxybutyrate dehydrogenase

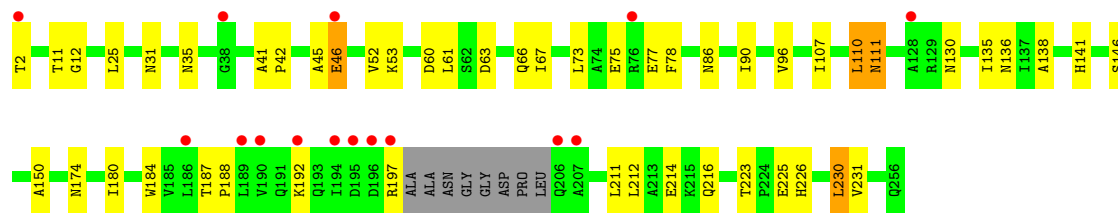


- Molecule 1: Beta-D-hydroxybutyrate dehydrogenase



- Molecule 1: Beta-D-hydroxybutyrate dehydrogenase





## 4 Data and refinement statistics

Property	Value	Source
Space group	C 1 2 1	Depositor
Cell constants a, b, c, $\alpha$ , $\beta$ , $\gamma$	115.33Å 58.18Å 119.38Å 90.00° 92.30° 90.00°	Depositor
Resolution (Å)	30.00 – 1.90 29.82 – 1.90	Depositor EDS
% Data completeness (in resolution range)	99.3 (30.00-1.90) 99.4 (29.82-1.90)	Depositor EDS
$R_{merge}$	0.05	Depositor
$R_{sym}$	(Not available)	Depositor
$\langle I/\sigma(I) \rangle$ <sup>1</sup>	12.66 (at 1.91Å)	Xtrriage
Refinement program	REFMAC	Depositor
R, $R_{free}$	0.169 , 0.219 0.169 , 0.218	Depositor DCC
$R_{free}$ test set	3157 reflections (5.08%)	wwPDB-VP
Wilson B-factor (Å <sup>2</sup> )	18.4	Xtrriage
Anisotropy	0.334	Xtrriage
Bulk solvent $k_{sol}$ (e/Å <sup>3</sup> ), $B_{sol}$ (Å <sup>2</sup> )	0.35 , 50.1	EDS
L-test for twinning <sup>2</sup>	$\langle  L  \rangle = 0.50$ , $\langle L^2 \rangle = 0.33$	Xtrriage
Estimated twinning fraction	0.013 for -h,-k,l	Xtrriage
$F_o, F_c$ correlation	0.95	EDS
Total number of atoms	7953	wwPDB-VP
Average B, all atoms (Å <sup>2</sup> )	18.0	wwPDB-VP

Xtrriage's analysis on translational NCS is as follows: *The analyses of the Patterson function reveals a significant off-origin peak that is 22.69 % of the origin peak, indicating pseudo-translational symmetry. The chance of finding a peak of this or larger height randomly in a structure without pseudo-translational symmetry is equal to 5.4100e-03. The detected translational NCS is most likely also responsible for the elevated intensity ratio.*

<sup>1</sup>Intensities estimated from amplitudes.

<sup>2</sup>Theoretical values of  $\langle |L| \rangle$ ,  $\langle L^2 \rangle$  for acentric reflections are 0.5, 0.333 respectively for untwinned datasets, and 0.375, 0.2 for perfectly twinned datasets.

## 5 Model quality [i](#)

### 5.1 Standard geometry [i](#)

Bond lengths and bond angles in the following residue types are not validated in this section:  
NAD

The Z score for a bond length (or angle) is the number of standard deviations the observed value is removed from the expected value. A bond length (or angle) with  $|Z| > 5$  is considered an outlier worth inspection. RMSZ is the root-mean-square of all Z scores of the bond lengths (or angles).

Mol	Chain	Bond lengths		Bond angles	
		RMSZ	# Z  >5	RMSZ	# Z  >5
1	A	0.83	0/1906	0.84	4/2598 (0.2%)
1	B	0.81	0/1893	0.82	5/2579 (0.2%)
1	C	0.66	0/1863	0.72	2/2537 (0.1%)
1	D	0.69	0/1855	0.74	1/2526 (0.0%)
All	All	0.75	0/7517	0.78	12/10240 (0.1%)

Chiral center outliers are detected by calculating the chiral volume of a chiral center and verifying if the center is modelled as a planar moiety or with the opposite hand. A planarity outlier is detected by checking planarity of atoms in a peptide group, atoms in a mainchain group or atoms of a sidechain that are expected to be planar.

Mol	Chain	#Chirality outliers	#Planarity outliers
1	A	0	2
1	D	0	1
All	All	0	3

There are no bond length outliers.

All (12) bond angle outliers are listed below:

Mol	Chain	Res	Type	Atoms	Z	Observed(°)	Ideal(°)
1	A	67	ILE	CG1-CB-CG2	-8.84	91.94	111.40
1	A	52	VAL	CG1-CB-CG2	7.18	122.39	110.90
1	B	52	VAL	CG1-CB-CG2	6.97	122.06	110.90
1	C	243	ARG	NE-CZ-NH2	-6.88	116.86	120.30
1	A	230	LEU	CB-CG-CD2	6.49	122.03	111.00
1	A	88	ALA	N-CA-C	6.31	128.03	111.00
1	C	243	ARG	NE-CZ-NH1	6.18	123.39	120.30
1	D	63	ASP	CB-CG-OD1	5.37	123.14	118.30
1	B	129	ARG	NE-CZ-NH2	-5.21	117.69	120.30
1	B	212	LEU	CA-CB-CG	5.19	127.24	115.30

*Continued on next page...*



Continued from previous page...

Mol	Chain	Res	Type	Atoms	Z	Observed(°)	Ideal(°)
1	B	60	ASP	CB-CG-OD1	5.16	122.95	118.30
1	B	76	ARG	NE-CZ-NH2	-5.14	117.73	120.30

There are no chirality outliers.

All (3) planarity outliers are listed below:

Mol	Chain	Res	Type	Group
1	A	88	ALA	Peptide
1	A	89	GLY	Peptide
1	D	46	GLU	Peptide

## 5.2 Too-close contacts

In the following table, the Non-H and H(model) columns list the number of non-hydrogen atoms and hydrogen atoms in the chain respectively. The H(added) column lists the number of hydrogen atoms added and optimized by MolProbity. The Clashes column lists the number of clashes within the asymmetric unit, whereas Symm-Clashes lists symmetry-related clashes.

Mol	Chain	Non-H	H(model)	H(added)	Clashes	Symm-Clashes
1	A	1869	0	1888	20	0
1	B	1857	0	1878	29	0
1	C	1828	0	1854	35	0
1	D	1820	0	1843	34	0
2	B	44	0	26	0	0
2	C	44	0	26	2	0
2	D	44	0	26	1	0
3	A	150	0	0	2	0
3	B	144	0	0	3	0
3	C	75	0	0	0	0
3	D	78	0	0	0	0
All	All	7953	0	7541	117	0

The all-atom clashscore is defined as the number of clashes found per 1000 atoms (including hydrogen atoms). The all-atom clashscore for this structure is 8.

All (117) close contacts within the same asymmetric unit are listed below, sorted by their clash magnitude.

Atom-1	Atom-2	Interatomic distance (Å)	Clash overlap (Å)
1:C:184:TRP:H	1:C:216:GLN:HE22	1.09	0.96

Continued on next page...

*Continued from previous page...*

Atom-1	Atom-2	Interatomic distance (Å)	Clash overlap (Å)
1:B:90:ILE:HG13	1:B:107:ILE:HD13	1.49	0.94
1:A:184:TRP:H	1:A:216:GLN:HE22	1.14	0.93
1:B:45:ALA:O	1:B:49:ARG:HG2	1.72	0.90
1:D:184:TRP:H	1:D:216:GLN:HE22	1.05	0.89
1:B:184:TRP:H	1:B:216:GLN:HE22	1.21	0.88
1:D:96:VAL:HG12	1:D:150:ALA:HB2	1.61	0.82
1:D:90:ILE:HG13	1:D:107:ILE:HD13	1.64	0.79
1:B:90:ILE:HG13	1:B:107:ILE:CD1	2.11	0.79
1:B:14:THR:HG21	1:B:37:PHE:O	1.83	0.78
1:D:184:TRP:N	1:D:216:GLN:HE22	1.81	0.75
1:B:90:ILE:H	1:B:111:ASN:HD21	1.36	0.73
1:C:184:TRP:N	1:C:216:GLN:HE22	1.84	0.72
1:D:135:ILE:HD12	1:D:231:VAL:HG13	1.70	0.72
1:C:141:HIS:HE1	1:C:146:SER:OG	1.73	0.71
1:A:88:ALA:HB2	3:A:349:HOH:O	1.90	0.71
1:D:141:HIS:HE1	1:D:146:SER:OG	1.74	0.70
1:D:225:GLU:CD	1:D:225:GLU:H	1.94	0.70
1:B:4:LYS:HE3	3:B:411:HOH:O	1.93	0.69
1:B:141:HIS:HE1	1:B:146:SER:OG	1.76	0.69
1:C:57:HIS:CD2	1:C:59:ALA:HB2	2.28	0.68
1:A:184:TRP:H	1:A:216:GLN:NE2	1.91	0.68
1:C:14:THR:HG21	1:C:37:PHE:O	1.93	0.68
1:C:90:ILE:H	1:C:111:ASN:HD21	1.41	0.67
1:A:141:HIS:HE1	1:A:146:SER:OG	1.77	0.67
1:C:184:TRP:H	1:C:216:GLN:NE2	1.88	0.66
1:D:184:TRP:H	1:D:216:GLN:NE2	1.87	0.66
1:B:184:TRP:N	1:B:216:GLN:HE22	1.95	0.65
1:B:86:ASN:HD22	1:B:136:ASN:ND2	1.97	0.63
1:A:27:ARG:NH2	1:A:225:GLU:OE2	2.32	0.62
1:C:57:HIS:CD2	1:C:59:ALA:H	2.18	0.62
1:C:12:GLY:H	1:C:35:ASN:HD22	1.48	0.61
1:D:90:ILE:H	1:D:111:ASN:HD21	1.47	0.61
1:C:60:ASP:H	1:C:66:GLN:NE2	1.98	0.60
1:D:31:ASN:HA	1:D:52:VAL:HG13	1.84	0.60
1:A:86:ASN:HD22	1:A:136:ASN:ND2	2.00	0.60
1:D:41:ALA:HB3	1:D:42:PRO:HD3	1.84	0.60
1:D:61:LEU:O	1:D:67:ILE:HD11	2.02	0.59
1:D:60:ASP:H	1:D:66:GLN:NE2	2.00	0.59
1:C:2:THR:HB	1:C:28:ALA:HB1	1.85	0.59
1:D:86:ASN:HD22	1:D:136:ASN:ND2	2.00	0.58
1:A:184:TRP:N	1:A:216:GLN:HE22	1.93	0.58

*Continued on next page...*

*Continued from previous page...*

Atom-1	Atom-2	Interatomic distance (Å)	Clash overlap (Å)
1:D:130:ASN:HD21	1:D:174:ASN:H	1.52	0.58
1:C:57:HIS:HB2	1:C:73:LEU:HD22	1.86	0.58
1:D:11:THR:HB	1:D:61:LEU:HD11	1.86	0.57
1:A:19:LEU:O	1:A:23:GLN:HG3	2.06	0.56
1:A:60:ASP:H	1:A:66:GLN:NE2	2.04	0.56
1:B:11:THR:HB	1:B:61:LEU:HD11	1.88	0.56
1:C:86:ASN:HD22	1:C:136:ASN:HD21	1.52	0.56
1:B:86:ASN:HD22	1:B:136:ASN:HD21	1.54	0.56
1:D:223:THR:HB	1:D:225:GLU:OE1	2.06	0.56
1:D:180:ILE:HG12	1:D:230:LEU:HD13	1.89	0.55
1:C:149:LYS:NZ	1:C:193:GLN:HE22	2.05	0.54
1:C:86:ASN:HD22	1:C:136:ASN:ND2	2.05	0.54
1:A:86:ASN:HD22	1:A:136:ASN:HD21	1.54	0.54
1:D:53:LYS:HG2	1:D:78:PHE:CE2	2.42	0.53
1:B:90:ILE:CG1	1:B:107:ILE:HD13	2.30	0.53
1:C:57:HIS:HD2	1:C:59:ALA:HB2	1.71	0.53
1:B:57:HIS:HD2	1:B:59:ALA:H	1.57	0.52
1:D:197:ARG:NH2	1:D:214:GLU:OE1	2.41	0.52
1:C:57:HIS:HD2	1:C:59:ALA:H	1.56	0.51
1:C:135:ILE:HD13	1:C:231:VAL:HG13	1.93	0.51
1:B:60:ASP:OD1	1:B:62:SER:HB2	2.10	0.51
1:D:86:ASN:HD22	1:D:136:ASN:HD21	1.58	0.50
1:C:14:THR:HG22	2:C:300:NAD:O3B	2.10	0.50
1:B:184:TRP:H	1:B:216:GLN:NE2	2.00	0.49
1:A:61:LEU:CD2	1:A:67:ILE:HG22	2.42	0.49
1:A:55:VAL:HG11	1:A:77:GLU:HG2	1.93	0.49
1:A:64:VAL:O	1:A:67:ILE:HG12	2.13	0.49
1:B:60:ASP:H	1:B:66:GLN:NE2	2.11	0.48
1:C:96:VAL:HG22	1:C:150:ALA:HB2	1.96	0.48
1:D:141:HIS:CE1	1:D:146:SER:OG	2.63	0.47
1:A:141:HIS:CE1	1:A:146:SER:OG	2.64	0.46
1:C:138:ALA:O	2:C:300:NAD:H6N	2.16	0.46
1:C:53:LYS:HB2	1:C:78:PHE:HE1	1.81	0.46
1:C:53:LYS:HB2	1:C:78:PHE:CE1	2.51	0.46
1:C:175:VAL:O	1:C:243:ARG:NH2	2.49	0.46
1:D:187:THR:HB	1:D:188:PRO:HD2	1.97	0.46
1:C:107:ILE:O	1:C:111:ASN:HB2	2.16	0.45
1:B:210:ASP:O	1:B:214:GLU:HG3	2.17	0.45
1:A:86:ASN:HB2	1:A:136:ASN:HD22	1.81	0.45
1:D:111:ASN:N	1:D:111:ASN:HD22	2.14	0.45
1:B:12:GLY:H	1:B:35:ASN:HD22	1.65	0.44

*Continued on next page...*

*Continued from previous page...*

Atom-1	Atom-2	Interatomic distance (Å)	Clash overlap (Å)
1:C:141:HIS:CE1	1:C:146:SER:OG	2.63	0.44
1:B:57:HIS:CD2	1:B:59:ALA:H	2.35	0.44
1:B:149:LYS:NZ	1:B:193:GLN:HE22	2.16	0.44
1:D:130:ASN:O	1:D:174:ASN:HB2	2.18	0.44
1:C:57:HIS:HD2	1:C:59:ALA:CB	2.30	0.44
1:C:30:ALA:O	1:C:52:VAL:HG21	2.18	0.44
1:D:96:VAL:HG12	1:D:150:ALA:CB	2.40	0.44
1:D:138:ALA:O	2:D:300:NAD:H6N	2.18	0.44
1:A:61:LEU:HD23	1:A:67:ILE:HG22	2.00	0.43
1:A:223:THR:H	1:A:226:HIS:CD2	2.37	0.43
1:A:64:VAL:HA	1:A:67:ILE:HG12	1.99	0.43
1:B:111:ASN:HD22	1:B:111:ASN:N	2.17	0.43
1:B:187:THR:HB	1:B:188:PRO:HD2	2.01	0.43
1:C:110:LEU:HB3	1:C:111:ASN:HD22	1.84	0.43
1:D:110:LEU:HB3	1:D:111:ASN:HD22	1.83	0.43
1:B:141:HIS:CE1	1:B:146:SER:OG	2.65	0.42
1:C:130:ASN:O	1:C:174:ASN:HB2	2.19	0.42
1:B:23:GLN:HG2	3:B:431:HOH:O	2.19	0.42
1:D:12:GLY:H	1:D:35:ASN:HD22	1.68	0.42
1:D:223:THR:CB	1:D:225:GLU:OE1	2.68	0.42
1:C:72:ALA:O	1:C:76:ARG:HG3	2.20	0.42
1:B:61:LEU:O	1:B:67:ILE:HD11	2.19	0.42
1:D:130:ASN:ND2	1:D:174:ASN:H	2.16	0.41
1:C:46:GLU:O	1:C:49:ARG:HG3	2.19	0.41
1:D:73:LEU:C	1:D:73:LEU:HD23	2.41	0.41
1:B:223:THR:H	1:B:226:HIS:CD2	2.39	0.41
1:C:89:GLY:HA2	1:C:110:LEU:HD13	2.03	0.41
1:B:27:ARG:NH2	3:B:444:HOH:O	2.30	0.41
1:C:197:ARG:HB3	1:C:207:ALA:HB1	2.03	0.41
1:D:42:PRO:O	1:D:45:ALA:O	2.39	0.41
1:A:12:GLY:H	1:A:35:ASN:HD22	1.70	0.40
1:C:238:ALA:HA	1:D:226:HIS:CG	2.56	0.40
1:A:106:LYS:NZ	3:A:393:HOH:O	2.44	0.40
1:B:197:ARG:HH22	1:B:214:GLU:CD	2.24	0.40

There are no symmetry-related clashes.

## 5.3 Torsion angles [i](#)

### 5.3.1 Protein backbone [i](#)

In the following table, the Percentiles column shows the percent Ramachandran outliers of the chain as a percentile score with respect to all X-ray entries followed by that with respect to entries of similar resolution.

The Analysed column shows the number of residues for which the backbone conformation was analysed, and the total number of residues.

Mol	Chain	Analysed	Favoured	Allowed	Outliers	Percentiles	
1	A	253/255 (99%)	247 (98%)	6 (2%)	0	100	100
1	B	249/255 (98%)	243 (98%)	6 (2%)	0	100	100
1	C	244/255 (96%)	238 (98%)	6 (2%)	0	100	100
1	D	243/255 (95%)	236 (97%)	7 (3%)	0	100	100
All	All	989/1020 (97%)	964 (98%)	25 (2%)	0	100	100

There are no Ramachandran outliers to report.

### 5.3.2 Protein sidechains [i](#)

In the following table, the Percentiles column shows the percent sidechain outliers of the chain as a percentile score with respect to all X-ray entries followed by that with respect to entries of similar resolution.

The Analysed column shows the number of residues for which the sidechain conformation was analysed, and the total number of residues.

Mol	Chain	Analysed	Rotameric	Outliers	Percentiles	
1	A	189/189 (100%)	181 (96%)	8 (4%)	30	20
1	B	188/189 (100%)	181 (96%)	7 (4%)	34	25
1	C	186/189 (98%)	175 (94%)	11 (6%)	19	10
1	D	185/189 (98%)	174 (94%)	11 (6%)	19	10
All	All	748/756 (99%)	711 (95%)	37 (5%)	25	15

All (37) residues with a non-rotameric sidechain are listed below:

Mol	Chain	Res	Type
1	A	25	LEU
1	A	52	VAL

*Continued on next page...*

*Continued from previous page...*

Mol	Chain	Res	Type
1	A	67	ILE
1	A	73	LEU
1	A	77	GLU
1	A	211	LEU
1	A	212	LEU
1	A	230	LEU
1	B	25	LEU
1	B	34	LEU
1	B	52	VAL
1	B	75	GLU
1	B	102	GLU
1	B	110	LEU
1	B	230	LEU
1	C	6	LYS
1	C	25	LEU
1	C	52	VAL
1	C	106	LYS
1	C	110	LEU
1	C	111	ASN
1	C	206	GLN
1	C	211	LEU
1	C	212	LEU
1	C	230	LEU
1	C	232	LEU
1	D	2	THR
1	D	25	LEU
1	D	46	GLU
1	D	75	GLU
1	D	77	GLU
1	D	110	LEU
1	D	111	ASN
1	D	192	LYS
1	D	211	LEU
1	D	212	LEU
1	D	230	LEU

Sometimes sidechains can be flipped to improve hydrogen bonding and reduce clashes. All (41) such sidechains are listed below:

Mol	Chain	Res	Type
1	A	35	ASN
1	A	66	GLN
1	A	92	HIS

*Continued on next page...*

*Continued from previous page...*

Mol	Chain	Res	Type
1	A	111	ASN
1	A	136	ASN
1	A	141	HIS
1	A	216	GLN
1	A	226	HIS
1	A	256	GLN
1	B	35	ASN
1	B	57	HIS
1	B	66	GLN
1	B	92	HIS
1	B	111	ASN
1	B	136	ASN
1	B	141	HIS
1	B	157	HIS
1	B	191	GLN
1	B	193	GLN
1	B	216	GLN
1	B	226	HIS
1	C	23	GLN
1	C	35	ASN
1	C	57	HIS
1	C	66	GLN
1	C	111	ASN
1	C	136	ASN
1	C	141	HIS
1	C	157	HIS
1	C	193	GLN
1	C	216	GLN
1	C	256	GLN
1	D	35	ASN
1	D	66	GLN
1	D	92	HIS
1	D	111	ASN
1	D	130	ASN
1	D	136	ASN
1	D	141	HIS
1	D	174	ASN
1	D	216	GLN

### 5.3.3 RNA ⓘ

There are no RNA molecules in this entry.

## 5.4 Non-standard residues in protein, DNA, RNA chains [i](#)

There are no non-standard protein/DNA/RNA residues in this entry.

## 5.5 Carbohydrates [i](#)

There are no monosaccharides in this entry.

## 5.6 Ligand geometry [i](#)

3 ligands are modelled in this entry.

In the following table, the Counts columns list the number of bonds (or angles) for which Mogul statistics could be retrieved, the number of bonds (or angles) that are observed in the model and the number of bonds (or angles) that are defined in the Chemical Component Dictionary. The Link column lists molecule types, if any, to which the group is linked. The Z score for a bond length (or angle) is the number of standard deviations the observed value is removed from the expected value. A bond length (or angle) with  $|Z| > 2$  is considered an outlier worth inspection. RMSZ is the root-mean-square of all Z scores of the bond lengths (or angles).

Mol	Type	Chain	Res	Link	Bond lengths			Bond angles		
					Counts	RMSZ	# Z  > 2	Counts	RMSZ	# Z  > 2
2	NAD	B	300	-	42,48,48	1.62	4 (9%)	50,73,73	1.41	4 (8%)
2	NAD	C	300	-	42,48,48	1.79	4 (9%)	50,73,73	1.24	4 (8%)
2	NAD	D	300	-	42,48,48	1.69	4 (9%)	50,73,73	1.51	5 (10%)

In the following table, the Chirals column lists the number of chiral outliers, the number of chiral centers analysed, the number of these observed in the model and the number defined in the Chemical Component Dictionary. Similar counts are reported in the Torsion and Rings columns. '-' means no outliers of that kind were identified.

Mol	Type	Chain	Res	Link	Chirals	Torsions	Rings
2	NAD	B	300	-	-	6/26/62/62	0/5/5/5
2	NAD	C	300	-	-	6/26/62/62	0/5/5/5
2	NAD	D	300	-	-	6/26/62/62	0/5/5/5

All (12) bond length outliers are listed below:

Mol	Chain	Res	Type	Atoms	Z	Observed(Å)	Ideal(Å)
2	C	300	NAD	O7N-C7N	8.48	1.40	1.24
2	D	300	NAD	O7N-C7N	8.35	1.40	1.24
2	B	300	NAD	O7N-C7N	6.53	1.36	1.24

*Continued on next page...*



Continued from previous page...

Mol	Chain	Res	Type	Atoms	Z	Observed(Å)	Ideal(Å)
2	C	300	NAD	C2A-N3A	4.08	1.38	1.32
2	B	300	NAD	C2N-N1N	3.70	1.39	1.35
2	B	300	NAD	C2A-N1A	3.51	1.40	1.33
2	C	300	NAD	C2A-N1A	3.24	1.39	1.33
2	B	300	NAD	C2A-N3A	3.17	1.37	1.32
2	D	300	NAD	C2A-N3A	3.06	1.37	1.32
2	D	300	NAD	C2N-N1N	3.04	1.38	1.35
2	D	300	NAD	C2A-N1A	2.50	1.38	1.33
2	C	300	NAD	C2N-N1N	2.43	1.37	1.35

All (13) bond angle outliers are listed below:

Mol	Chain	Res	Type	Atoms	Z	Observed(°)	Ideal(°)
2	D	300	NAD	N3A-C2A-N1A	-5.76	119.68	128.68
2	B	300	NAD	N3A-C2A-N1A	-5.20	120.55	128.68
2	C	300	NAD	N3A-C2A-N1A	-4.77	121.22	128.68
2	D	300	NAD	C3N-C7N-N7N	4.43	123.06	117.75
2	B	300	NAD	O7N-C7N-C3N	-4.06	114.77	119.63
2	B	300	NAD	C3N-C7N-N7N	3.95	122.49	117.75
2	D	300	NAD	O7N-C7N-C3N	-3.57	115.36	119.63
2	C	300	NAD	C3N-C7N-N7N	3.28	121.69	117.75
2	C	300	NAD	C1B-N9A-C4A	-2.91	121.52	126.64
2	D	300	NAD	O4D-C1D-C2D	-2.74	102.92	106.93
2	C	300	NAD	O7N-C7N-C3N	-2.73	116.36	119.63
2	B	300	NAD	C4A-C5A-N7A	-2.45	106.85	109.40
2	D	300	NAD	C1B-N9A-C4A	-2.34	122.53	126.64

There are no chirality outliers.

All (18) torsion outliers are listed below:

Mol	Chain	Res	Type	Atoms
2	B	300	NAD	C5D-O5D-PN-O1N
2	B	300	NAD	C5D-O5D-PN-O2N
2	B	300	NAD	O4D-C1D-N1N-C2N
2	C	300	NAD	C5D-O5D-PN-O1N
2	C	300	NAD	C5D-O5D-PN-O2N
2	C	300	NAD	O4D-C1D-N1N-C2N
2	D	300	NAD	C5D-O5D-PN-O1N
2	D	300	NAD	C5D-O5D-PN-O2N
2	D	300	NAD	PA-O3-PN-O2N
2	B	300	NAD	PA-O3-PN-O2N
2	B	300	NAD	O4B-C4B-C5B-O5B

Continued on next page...

*Continued from previous page...*

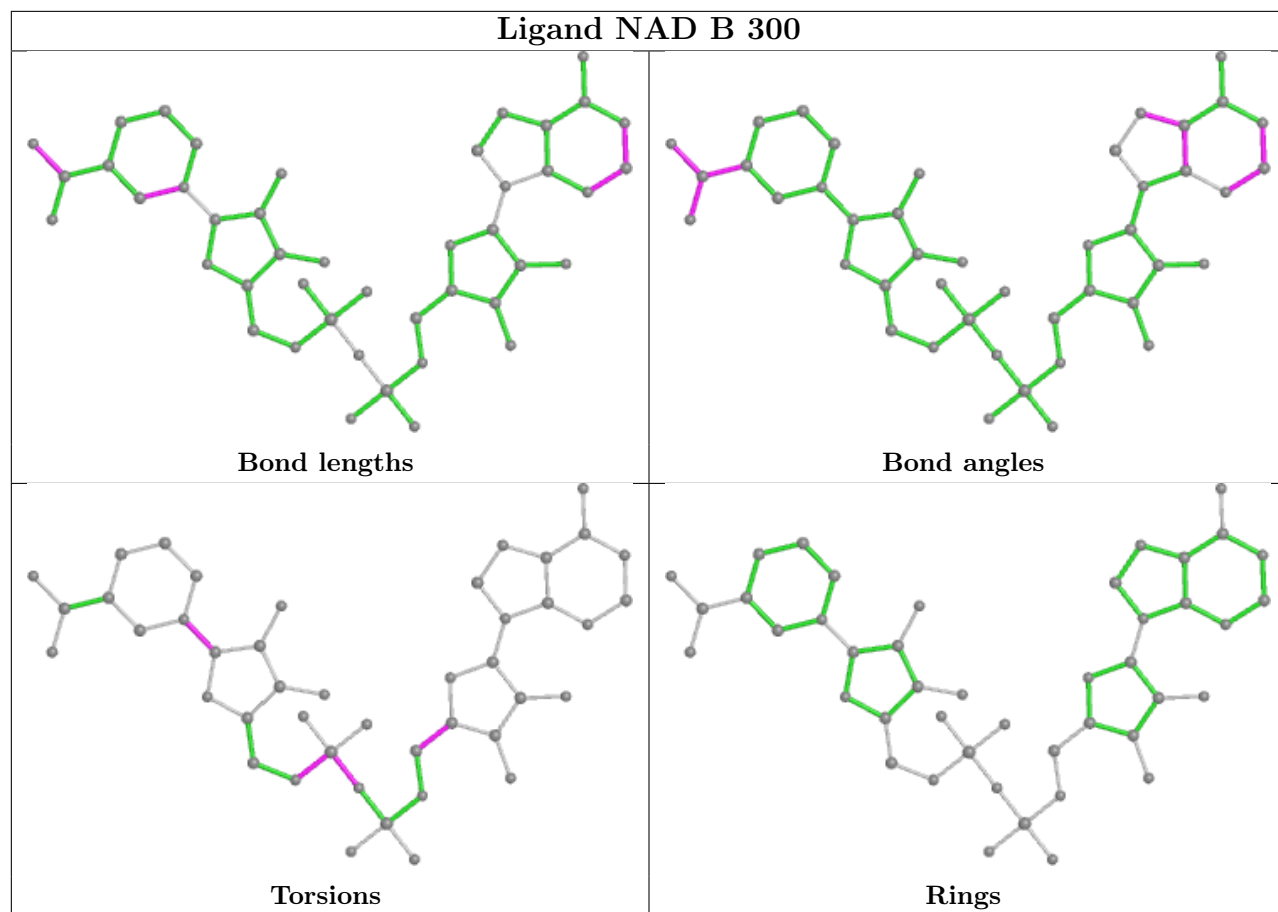
Mol	Chain	Res	Type	Atoms
2	C	300	NAD	O4B-C4B-C5B-O5B
2	D	300	NAD	O4B-C4B-C5B-O5B
2	B	300	NAD	C5D-O5D-PN-O3
2	C	300	NAD	C5D-O5D-PN-O3
2	D	300	NAD	C5D-O5D-PN-O3
2	C	300	NAD	PA-O3-PN-O2N
2	D	300	NAD	PA-O3-PN-O1N

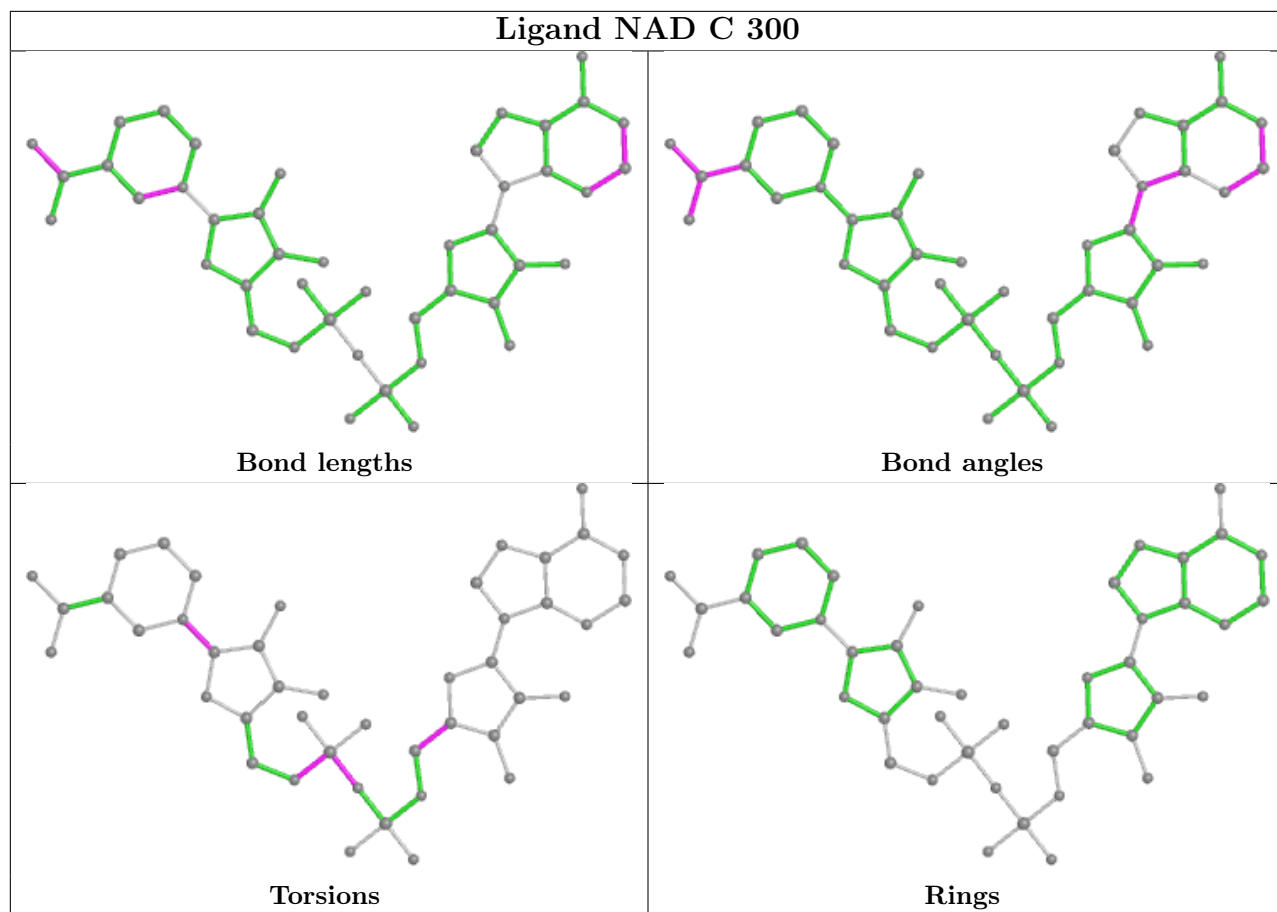
There are no ring outliers.

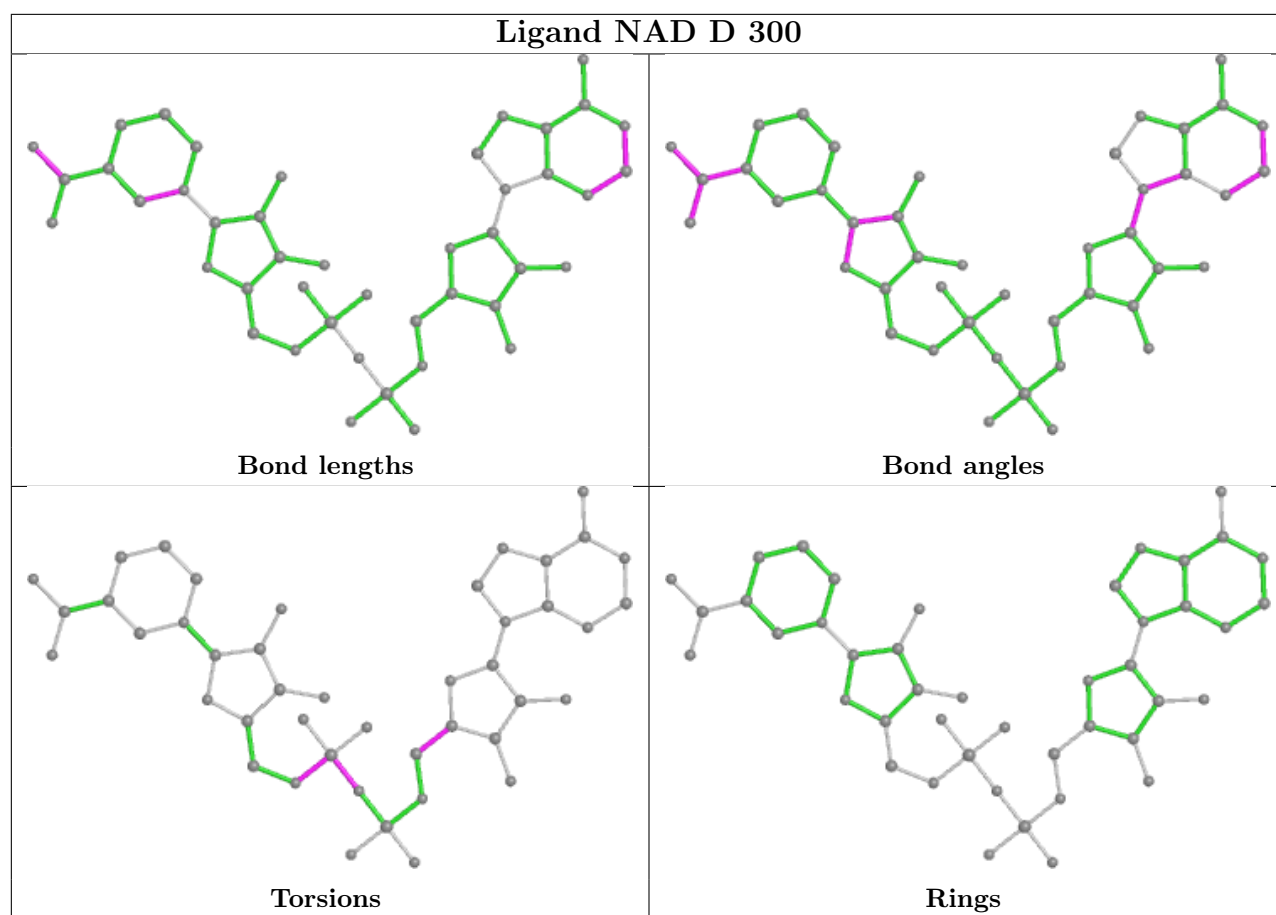
2 monomers are involved in 3 short contacts:

Mol	Chain	Res	Type	Clashes	Symm-Clashes
2	C	300	NAD	2	0
2	D	300	NAD	1	0

The following is a two-dimensional graphical depiction of Mogul quality analysis of bond lengths, bond angles, torsion angles, and ring geometry for all instances of the Ligand of Interest. In addition, ligands with molecular weight > 250 and outliers as shown on the validation Tables will also be included. For torsion angles, if less than 5% of the Mogul distribution of torsion angles is within 10 degrees of the torsion angle in question, then that torsion angle is considered an outlier. Any bond that is central to one or more torsion angles identified as an outlier by Mogul will be highlighted in the graph. For rings, the root-mean-square deviation (RMSD) between the ring in question and similar rings identified by Mogul is calculated over all ring torsion angles. If the average RMSD is greater than 60 degrees and the minimal RMSD between the ring in question and any Mogul-identified rings is also greater than 60 degrees, then that ring is considered an outlier. The outliers are highlighted in purple. The color gray indicates Mogul did not find sufficient equivalents in the CSD to analyse the geometry.







## 5.7 Other polymers [i](#)

There are no such residues in this entry.

## 5.8 Polymer linkage issues [i](#)

There are no chain breaks in this entry.

## 6 Fit of model and data

### 6.1 Protein, DNA and RNA chains

In the following table, the column labelled ‘#RSRZ > 2’ contains the number (and percentage) of RSRZ outliers, followed by percent RSRZ outliers for the chain as percentile scores relative to all X-ray entries and entries of similar resolution. The OWAB column contains the minimum, median, 95<sup>th</sup> percentile and maximum values of the occupancy-weighted average B-factor per residue. The column labelled ‘Q < 0.9’ lists the number of (and percentage) of residues with an average occupancy less than 0.9.

Mol	Chain	Analysed	<RSRZ>	#RSRZ>2	OWAB(Å <sup>2</sup> )	Q<0.9
1	A	255/255 (100%)	0.13	7 (2%) 54 57	13, 17, 25, 34	0
1	B	253/255 (99%)	0.15	6 (2%) 59 62	14, 17, 24, 29	0
1	C	248/255 (97%)	0.42	18 (7%) 15 16	13, 17, 29, 42	0
1	D	247/255 (96%)	0.31	15 (6%) 21 24	13, 18, 24, 30	0
All	All	1003/1020 (98%)	0.25	46 (4%) 32 35	13, 17, 25, 42	0

All (46) RSRZ outliers are listed below:

Mol	Chain	Res	Type	RSRZ
1	A	89	GLY	7.7
1	D	207	ALA	5.6
1	B	198	ALA	4.9
1	C	2	THR	4.4
1	C	194	ILE	4.3
1	D	38	GLY	4.3
1	C	51	GLY	4.2
1	D	196	ASP	3.9
1	C	49	ARG	3.7
1	C	207	ALA	3.7
1	C	206	GLN	3.6
1	D	2	THR	3.5
1	A	37	PHE	3.5
1	D	190	VAL	3.4
1	B	199	ALA	3.3
1	A	199	ALA	3.3
1	D	194	ILE	3.2
1	D	195	ASP	3.1
1	B	202	GLY	2.9
1	C	210	ASP	2.8
1	A	201	GLY	2.8

*Continued on next page...*

*Continued from previous page...*

Mol	Chain	Res	Type	RSRZ
1	C	76	ARG	2.6
1	C	197	ARG	2.6
1	C	196	ASP	2.6
1	D	186	LEU	2.5
1	D	76	ARG	2.5
1	D	197	ARG	2.5
1	B	2	THR	2.5
1	D	46	GLU	2.5
1	D	206	GLN	2.4
1	B	137	ILE	2.4
1	D	192	LYS	2.4
1	D	128	ALA	2.3
1	A	2	THR	2.2
1	D	189	LEU	2.2
1	A	202	GLY	2.2
1	C	205	LEU	2.2
1	C	52	VAL	2.2
1	C	137	ILE	2.2
1	A	211	LEU	2.1
1	C	46	GLU	2.1
1	C	191	GLN	2.1
1	B	102	GLU	2.1
1	C	50	HIS	2.1
1	C	29	GLY	2.0
1	C	195	ASP	2.0

## 6.2 Non-standard residues in protein, DNA, RNA chains [i](#)

There are no non-standard protein/DNA/RNA residues in this entry.

## 6.3 Carbohydrates [i](#)

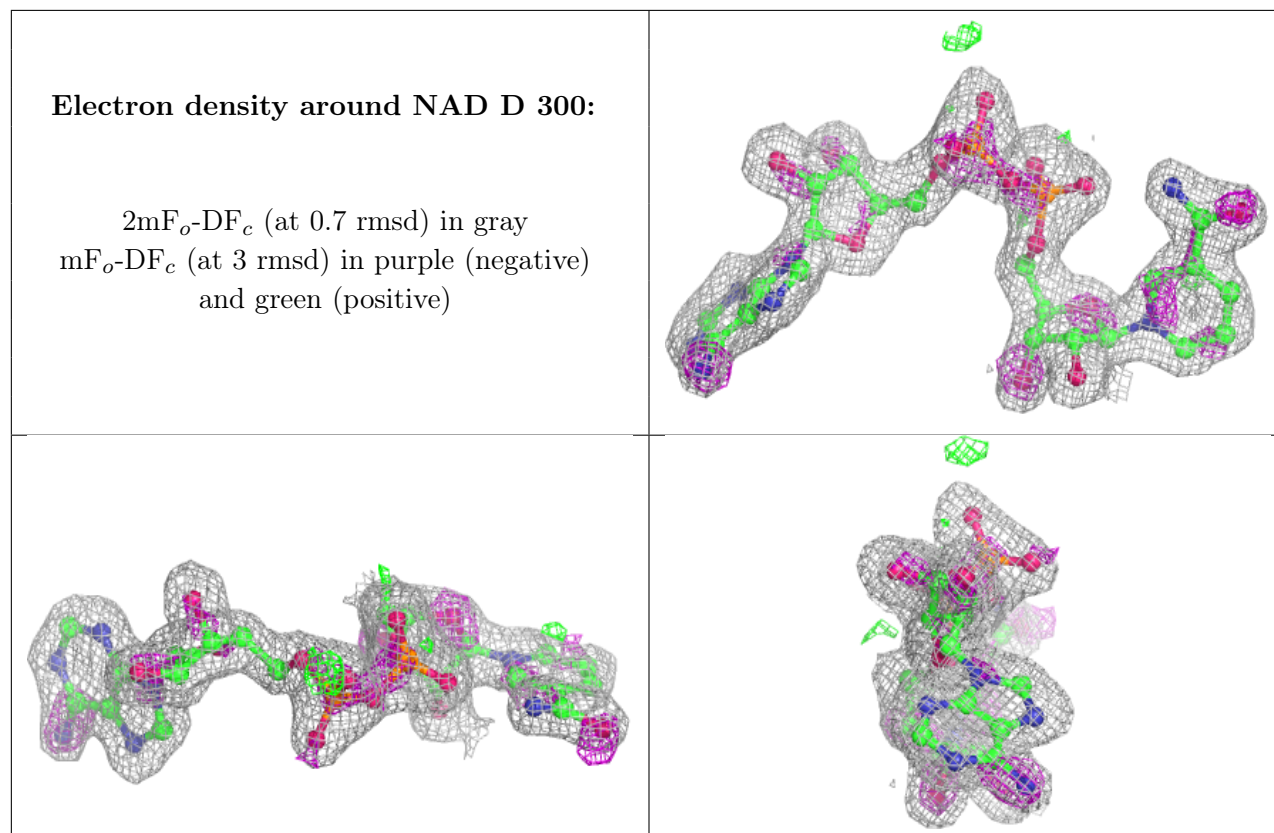
There are no monosaccharides in this entry.

## 6.4 Ligands [i](#)

In the following table, the Atoms column lists the number of modelled atoms in the group and the number defined in the chemical component dictionary. The B-factors column lists the minimum, median, 95<sup>th</sup> percentile and maximum values of B factors of atoms in the group. The column labelled 'Q < 0.9' lists the number of atoms with occupancy less than 0.9.

Mol	Type	Chain	Res	Atoms	RSCC	RSR	B-factors( $\text{\AA}^2$ )	Q<0.9
2	NAD	D	300	44/44	0.95	0.15	15,19,24,28	0
2	NAD	C	300	44/44	0.96	0.13	14,20,25,26	0
2	NAD	B	300	44/44	0.98	0.08	7,12,15,16	0

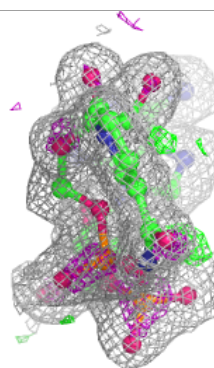
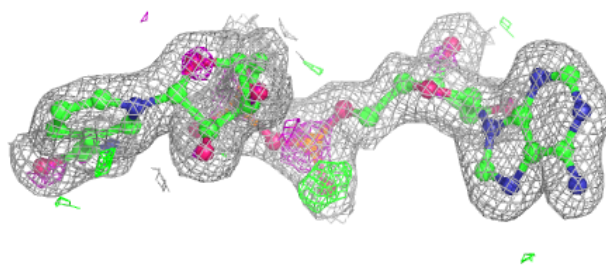
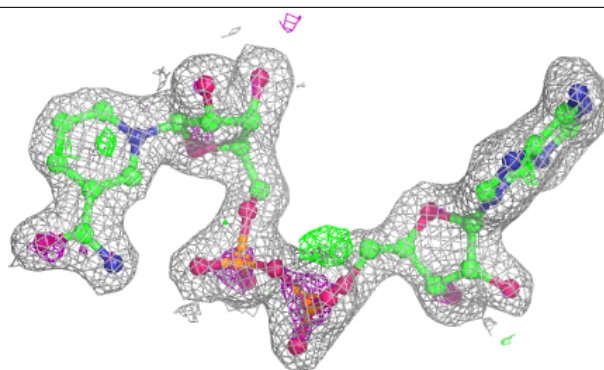
The following is a graphical depiction of the model fit to experimental electron density of all instances of the Ligand of Interest. In addition, ligands with molecular weight > 250 and outliers as shown on the geometry validation Tables will also be included. Each fit is shown from different orientation to approximate a three-dimensional view.



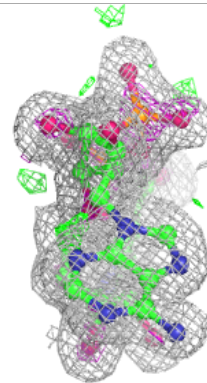
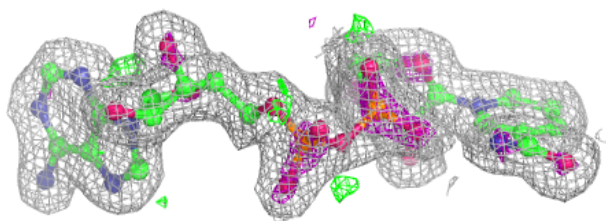
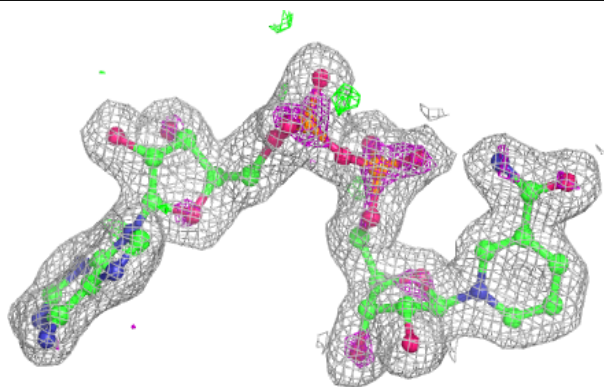


**Electron density around NAD C 300:**

$2mF_o-DF_c$  (at 0.7 rmsd) in gray  
 $mF_o-DF_c$  (at 3 rmsd) in purple (negative)  
and green (positive)

**Electron density around NAD B 300:**

$2mF_o-DF_c$  (at 0.7 rmsd) in gray  
 $mF_o-DF_c$  (at 3 rmsd) in purple (negative)  
and green (positive)



## 6.5 Other polymers [i](#)

There are no such residues in this entry.