



Full wwPDB X-ray Structure Validation Report ⓘ

Aug 20, 2023 – 09:21 AM EDT

PDB ID : 2NSY
Title : CRYSTAL STRUCTURE OF NH₃-DEPENDENT NAD⁺ SYNTHETASE FROM BACILLUS SUBTILIS IN COMPLEX WITH NAD-ADENYLATE
Authors : Rizzi, M.; Bolognesi, M.; Coda, A.
Deposited on : 1998-07-14
Resolution : 2.00 Å(reported)

This is a Full wwPDB X-ray Structure Validation Report for a publicly released PDB entry.

We welcome your comments at validation@mail.wwpdb.org

A user guide is available at

<https://www.wwpdb.org/validation/2017/XrayValidationReportHelp>

with specific help available everywhere you see the ⓘ symbol.

The types of validation reports are described at

<http://www.wwpdb.org/validation/2017/FAQs#types>.

The following versions of software and data (see [references ⓘ](#)) were used in the production of this report:

MolProbity : 4.02b-467
Mogul : 1.8.5 (274361), CSD as541be (2020)
Xtrriage (Phenix) : **NOT EXECUTED**
EDS : **NOT EXECUTED**
buster-report : 1.1.7 (2018)
Percentile statistics : 20191225.v01 (using entries in the PDB archive December 25th 2019)
Ideal geometry (proteins) : Engh & Huber (2001)
Ideal geometry (DNA, RNA) : Parkinson et al. (1996)
Validation Pipeline (wwPDB-VP) : 2.35

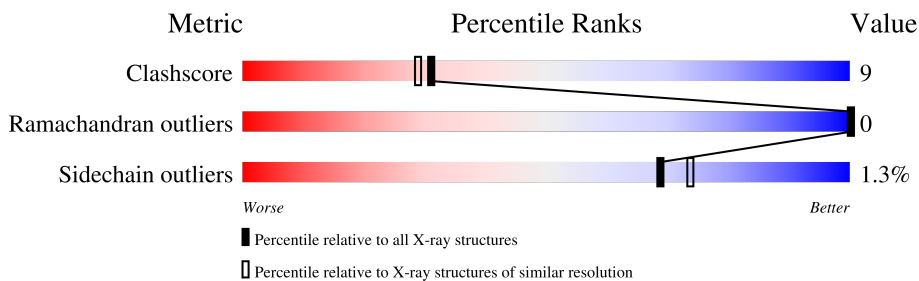
1 Overall quality at a glance

The following experimental techniques were used to determine the structure:

X-RAY DIFFRACTION

The reported resolution of this entry is 2.00 Å.

Percentile scores (ranging between 0-100) for global validation metrics of the entry are shown in the following graphic. The table shows the number of entries on which the scores are based.



Metric	Whole archive (#Entries)	Similar resolution (#Entries, resolution range(Å))
Clashscore	141614	9178 (2.00-2.00)
Ramachandran outliers	138981	9054 (2.00-2.00)
Sidechain outliers	138945	9053 (2.00-2.00)

The table below summarises the geometric issues observed across the polymeric chains and their fit to the electron density. The red, orange, yellow and green segments of the lower bar indicate the fraction of residues that contain outliers for ≥ 3 , 2, 1 and 0 types of geometric quality criteria respectively. A grey segment represents the fraction of residues that are not modelled. The numeric value for each fraction is indicated below the corresponding segment, with a dot representing fractions $\leq 5\%$.

Note EDS was not executed.

Mol	Chain	Length	Quality of chain
1	A	271	80% (Green), 17% (Yellow), 3% (Orange), 0% (Red), 0% (Grey)
1	B	271	81% (Green), 16% (Yellow), 3% (Orange), 0% (Red), 0% (Grey)

The following table lists non-polymeric compounds, carbohydrate monomers and non-standard residues in protein, DNA, RNA chains that are outliers for geometric or electron-density-fit criteria:

Mol	Type	Chain	Res	Chirality	Geometry	Clashes	Electron density
6	GOL	A	308	-	-	X	-

2 Entry composition [i](#)

There are 7 unique types of molecules in this entry. The entry contains 4940 atoms, of which 0 are hydrogens and 0 are deuteriums.

In the tables below, the ZeroOcc column contains the number of atoms modelled with zero occupancy, the AltConf column contains the number of residues with at least one atom in alternate conformation and the Trace column contains the number of residues modelled with at most 2 atoms.

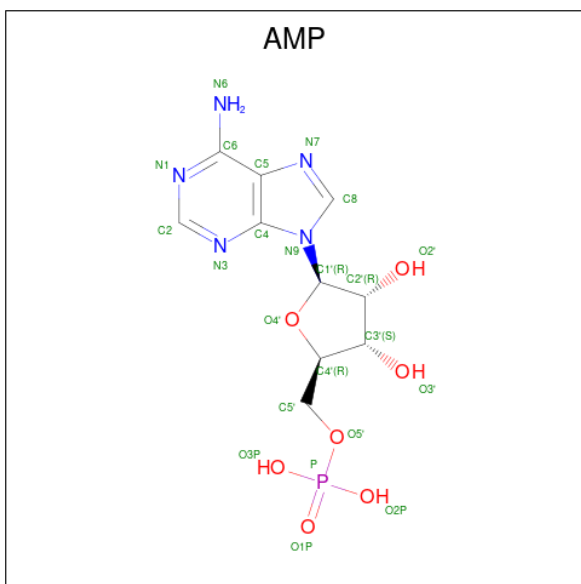
- Molecule 1 is a protein called PROTEIN (NAD SYNTHETASE).

Mol	Chain	Residues	Atoms					ZeroOcc	AltConf	Trace
			Total	C	N	O	S			
1	A	271	Total 2143	C 1343	N 364	O 431	S 5	0	4	0
1	B	271	Total 2138	C 1340	N 364	O 429	S 5	0	3	0

- Molecule 2 is MAGNESIUM ION (three-letter code: MG) (formula: Mg).

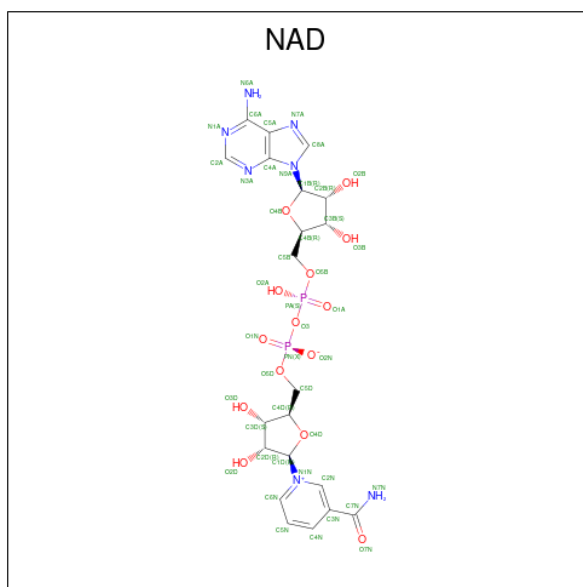
Mol	Chain	Residues	Atoms		ZeroOcc	AltConf
2	A	2	Total 2	Mg 2	0	0
2	B	2	Total 2	Mg 2	0	0

- Molecule 3 is ADENOSINE MONOPHOSPHATE (three-letter code: AMP) (formula: C₁₀H₁₄N₅O₇P).



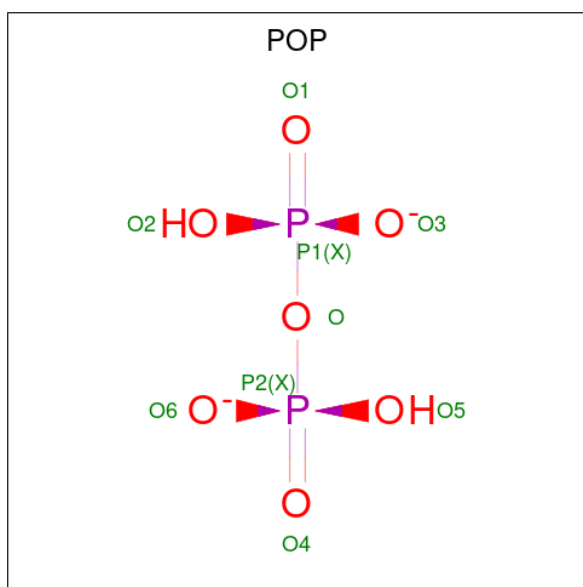
Mol	Chain	Residues	Atoms					ZeroOcc	AltConf
3	A	1	Total	C	N	O	P	0	0
			23	10	5	7	1		
3	B	1	Total	C	N	O	P	0	0
			23	10	5	7	1		

- Molecule 4 is NICOTINAMIDE-ADENINE-DINUCLEOTIDE (three-letter code: NAD) (formula: C₂₁H₂₇N₇O₁₄P₂).



Mol	Chain	Residues	Atoms					ZeroOcc	AltConf
4	A	1	Total	C	N	O	P	0	0
			43	21	6	14	2		
4	B	1	Total	C	N	O	P	0	0
			43	21	6	14	2		

- Molecule 5 is PYROPHOSPHATE 2- (three-letter code: POP) (formula: H₂O₇P₂).



Mol	Chain	Residues	Atoms	ZeroOcc	AltConf
5	A	1	Total O P 9 7 2	0	0
5	B	1	Total O P 9 7 2	0	0

- Molecule 6 is GLYCEROL (three-letter code: GOL) (formula: $C_3H_8O_3$).



Mol	Chain	Residues	Atoms	ZeroOcc	AltConf
6	A	1	Total C O 6 3 3	0	0
6	B	1	Total C O 6 3 3	0	0

- Molecule 7 is water.

Mol	Chain	Residues	Atoms		ZeroOcc	AltConf
7	A	265	Total 265	O 265	0	0
7	B	228	Total 228	O 228	0	0

3 Residue-property plots [i](#)

These plots are drawn for all protein, RNA, DNA and oligosaccharide chains in the entry. The first graphic for a chain summarises the proportions of the various outlier classes displayed in the second graphic. The second graphic shows the sequence view annotated by issues in geometry. Residues are color-coded according to the number of geometric quality criteria for which they contain at least one outlier: green = 0, yellow = 1, orange = 2 and red = 3 or more. Stretches of 2 or more consecutive residues without any outlier are shown as a green connector. Residues present in the sample, but not in the model, are shown in grey.


Note EDS was not executed.

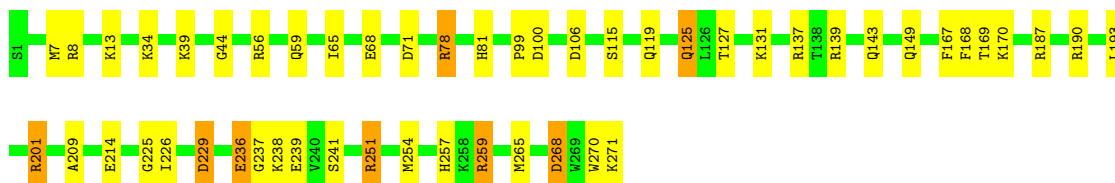
- Molecule 1: PROTEIN (NAD SYNTHETASE)

Chain A:  80% 17%



- Molecule 1: PROTEIN (NAD SYNTHETASE)

Chain B:  81% 16%



4 Data and refinement statistics

Xtriage (Phenix) and EDS were not executed - this section is therefore incomplete.

Property	Value	Source
Space group	P 1 21 1	Depositor
Cell constants a, b, c, α , β , γ	52.48Å 85.62Å 60.12Å 90.00° 110.76° 90.00°	Depositor
Resolution (Å)	15.00 – 2.00	Depositor
% Data completeness (in resolution range)	92.0 (15.00-2.00)	Depositor
R_{merge}	0.03	Depositor
R_{sym}	(Not available)	Depositor
Refinement program	REFMAC	Depositor
R, R_{free}	0.155 , 0.180	Depositor
Estimated twinning fraction	No twinning to report.	Xtriage
Total number of atoms	4940	wwPDB-VP
Average B, all atoms (Å ²)	16.0	wwPDB-VP

5 Model quality [i](#)

5.1 Standard geometry [i](#)

Bond lengths and bond angles in the following residue types are not validated in this section: GOL, NAD, POP, AMP, MG

The Z score for a bond length (or angle) is the number of standard deviations the observed value is removed from the expected value. A bond length (or angle) with $|Z| > 5$ is considered an outlier worth inspection. RMSZ is the root-mean-square of all Z scores of the bond lengths (or angles).

Mol	Chain	Bond lengths		Bond angles	
		RMSZ	# Z >5	RMSZ	# Z >5
1	A	0.99	2/2198 (0.1%)	2.19	37/2956 (1.3%)
1	B	0.90	1/2189 (0.0%)	1.52	27/2944 (0.9%)
All	All	0.95	3/4387 (0.1%)	1.88	64/5900 (1.1%)

Chiral center outliers are detected by calculating the chiral volume of a chiral center and verifying if the center is modelled as a planar moiety or with the opposite hand. A planarity outlier is detected by checking planarity of atoms in a peptide group, atoms in a mainchain group or atoms of a sidechain that are expected to be planar.

Mol	Chain	#Chirality outliers	#Planarity outliers
1	A	0	2
1	B	0	6
All	All	0	8

All (3) bond length outliers are listed below:

Mol	Chain	Res	Type	Atoms	Z	Observed(Å)	Ideal(Å)
1	A	8	ARG	CD-NE	15.68	1.73	1.46
1	A	162	GLU	CD-OE1	6.11	1.32	1.25
1	B	236	GLU	CD-OE1	5.59	1.31	1.25

All (64) bond angle outliers are listed below:

Mol	Chain	Res	Type	Atoms	Z	Observed(°)	Ideal(°)
1	A	8	ARG	NE-CZ-NH1	-58.85	90.88	120.30
1	A	8	ARG	NH1-CZ-NH2	43.45	167.19	119.40
1	A	8	ARG	NE-CZ-NH2	-39.26	100.67	120.30
1	A	8	ARG	CD-NE-CZ	-21.97	92.84	123.60
1	B	190	ARG	NE-CZ-NH1	17.09	128.85	120.30
1	B	259	ARG	NE-CZ-NH2	-16.89	111.85	120.30

Continued on next page...

Continued from previous page...

Mol	Chain	Res	Type	Atoms	Z	Observed(°)	Ideal(°)
1	A	137	ARG	NE-CZ-NH2	-13.80	113.40	120.30
1	B	265	MET	CG-SD-CE	-13.46	78.66	100.20
1	B	56	ARG	NE-CZ-NH2	-11.09	114.76	120.30
1	A	187	ARG	NE-CZ-NH1	10.72	125.66	120.30
1	A	137	ARG	NE-CZ-NH1	10.03	125.31	120.30
1	A	106	ASP	CB-CG-OD1	9.73	127.06	118.30
1	A	187	ARG	NE-CZ-NH2	-9.69	115.45	120.30
1	A	56	ARG	NE-CZ-NH1	9.54	125.07	120.30
1	B	201	ARG	NE-CZ-NH2	-9.42	115.59	120.30
1	B	139	ARG	NE-CZ-NH2	-9.26	115.67	120.30
1	A	256[A]	GLU	OE1-CD-OE2	-9.08	112.40	123.30
1	A	256[B]	GLU	OE1-CD-OE2	-9.08	112.40	123.30
1	A	259	ARG	NE-CZ-NH2	-8.99	115.80	120.30
1	B	229	ASP	CB-CG-OD1	8.46	125.92	118.30
1	B	190	ARG	NE-CZ-NH2	-8.28	116.16	120.30
1	B	78	ARG	NE-CZ-NH2	-7.60	116.50	120.30
1	A	251	ARG	NE-CZ-NH2	-7.56	116.52	120.30
1	B	187	ARG	NE-CZ-NH2	-7.51	116.55	120.30
1	B	56	ARG	NE-CZ-NH1	7.39	123.99	120.30
1	A	89	ASP	CB-CG-OD2	-7.27	111.76	118.30
1	B	137	ARG	NE-CZ-NH2	-7.21	116.69	120.30
1	A	236	GLU	OE1-CD-OE2	-7.21	114.65	123.30
1	B	139	ARG	NE-CZ-NH1	7.20	123.90	120.30
1	B	229	ASP	CB-CG-OD2	-7.16	111.85	118.30
1	A	251	ARG	NE-CZ-NH1	7.02	123.81	120.30
1	A	11	HIS	O-C-N	-7.00	111.51	122.70
1	A	173	ASP	CB-CG-OD2	-6.98	112.02	118.30
1	B	137	ARG	NE-CZ-NH1	6.88	123.74	120.30
1	B	78	ARG	NE-CZ-NH1	6.86	123.73	120.30
1	B	187	ARG	NE-CZ-NH1	-6.86	116.87	120.30
1	A	230	GLU	OE1-CD-OE2	-6.79	115.15	123.30
1	B	106	ASP	CB-CG-OD1	6.70	124.33	118.30
1	A	16	ILE	CA-C-O	6.69	134.15	120.10
1	B	236	GLU	OE1-CD-OE2	-6.69	115.28	123.30
1	A	195	GLU	OE1-CD-OE2	6.48	131.08	123.30
1	B	187	ARG	NH1-CZ-NH2	6.48	126.53	119.40
1	A	190	ARG	NE-CZ-NH1	6.29	123.44	120.30
1	A	56	ARG	NE-CZ-NH2	-6.27	117.16	120.30
1	B	270	TRP	O-C-N	6.06	132.40	122.70
1	B	268	ASP	O-C-N	-5.98	113.13	122.70
1	A	16	ILE	CA-C-N	-5.95	104.11	117.20
1	A	15[A]	SER	O-C-N	5.90	132.15	122.70

Continued on next page...

Continued from previous page...

Mol	Chain	Res	Type	Atoms	Z	Observed(°)	Ideal(°)
1	A	15[B]	SER	O-C-N	5.90	132.15	122.70
1	B	8	ARG	CD-NE-CZ	5.86	131.80	123.60
1	A	14	PRO	O-C-N	5.86	132.07	122.70
1	A	158	ASP	CB-CG-OD1	5.34	123.11	118.30
1	A	171	TYR	CB-CG-CD2	5.33	124.20	121.00
1	A	32	TYR	CZ-CE2-CD2	-5.33	115.01	119.80
1	A	14	PRO	CA-C-N	-5.28	105.58	117.20
1	A	66	ARG	NE-CZ-NH2	-5.27	117.67	120.30
1	B	259	ARG	NH1-CZ-NH2	5.26	125.18	119.40
1	A	201	ARG	NE-CZ-NH2	-5.24	117.68	120.30
1	B	190	ARG	CD-NE-CZ	5.18	130.86	123.60
1	B	268	ASP	CB-CG-OD1	5.16	122.95	118.30
1	A	89	ASP	OD1-CG-OD2	5.09	132.97	123.30
1	B	168	PHE	CB-CG-CD1	5.08	124.36	120.80
1	A	17	ASP	CA-CB-CG	5.07	124.56	113.40
1	A	25	ARG	NE-CZ-NH1	5.03	122.81	120.30

There are no chirality outliers.

All (8) planarity outliers are listed below:

Mol	Chain	Res	Type	Group
1	A	137	ARG	Sidechain
1	A	259	ARG	Sidechain
1	B	201	ARG	Sidechain
1	B	241	SER	Mainchain
1	B	251	ARG	Sidechain
1	B	259	ARG	Sidechain
1	B	268	ASP	Mainchain
1	B	78	ARG	Sidechain

5.2 Too-close contacts

In the following table, the Non-H and H(model) columns list the number of non-hydrogen atoms and hydrogen atoms in the chain respectively. The H(added) column lists the number of hydrogen atoms added and optimized by MolProbity. The Clashes column lists the number of clashes within the asymmetric unit, whereas Symm-Clashes lists symmetry-related clashes.

Mol	Chain	Non-H	H(model)	H(added)	Clashes	Symm-Clashes
1	A	2143	0	2114	34	2
1	B	2138	0	2112	42	2
2	A	2	0	0	0	0

Continued on next page...

Continued from previous page...

Mol	Chain	Non-H	H(model)	H(added)	Clashes	Symm-Clashes
2	B	2	0	0	0	0
3	A	23	0	12	0	0
3	B	23	0	12	0	0
4	A	43	0	24	1	0
4	B	43	0	24	13	0
5	A	9	0	0	0	0
5	B	9	0	0	0	0
6	A	6	0	8	5	0
6	B	6	0	8	0	0
7	A	265	0	0	15	3
7	B	228	0	0	7	3
All	All	4940	0	4314	80	5

The all-atom clashscore is defined as the number of clashes found per 1000 atoms (including hydrogen atoms). The all-atom clashscore for this structure is 9.

All (80) close contacts within the same asymmetric unit are listed below, sorted by their clash magnitude.

Atom-1	Atom-2	Interatomic distance (Å)	Clash overlap (Å)
4:B:303:NAD:PA	4:B:303:NAD:O5B	0.98	1.38
4:B:303:NAD:O5B	4:B:303:NAD:C5B	1.79	1.31
1:B:34:LYS:HE3	7:B:843:HOH:O	1.38	1.21
1:B:34:LYS:NZ	1:B:65:ILE:HG12	1.72	1.04
1:B:34:LYS:CE	7:B:843:HOH:O	1.96	1.00
6:A:308:GOL:H11	7:A:801:HOH:O	1.59	1.00
1:B:34:LYS:HZ1	1:B:65:ILE:HG12	1.22	0.99
4:B:303:NAD:PA	4:B:303:NAD:C5B	2.60	0.89
1:A:88:ASP:HB2	7:A:546:HOH:O	1.78	0.83
1:B:39:LYS:CE	1:B:71:ASP:OD2	2.30	0.80
1:B:209:ALA:HB2	4:B:303:NAD:C7N	2.14	0.78
4:B:303:NAD:O5B	4:B:303:NAD:O2A	1.99	0.78
1:A:23:GLU:HG3	7:A:729:HOH:O	1.86	0.74
1:A:149:GLN:HE22	1:B:127:THR:H	1.36	0.73
1:A:130:ASN:HD22	1:B:149:GLN:HE21	1.40	0.69
6:A:308:GOL:C1	7:A:801:HOH:O	2.25	0.68
1:B:119:GLN:HE22	1:B:125:GLN:NE2	1.91	0.68
4:B:303:NAD:O5B	4:B:303:NAD:O1A	2.03	0.67
1:A:127:THR:H	1:B:149:GLN:HE22	1.44	0.66
1:B:39:LYS:HE3	1:B:71:ASP:OD2	1.93	0.65
4:B:303:NAD:C7N	7:B:586:HOH:O	2.45	0.65
1:A:13:LYS:HD2	1:A:16:ILE:HG22	1.79	0.64

Continued on next page...

Continued from previous page...

Atom-1	Atom-2	Interatomic distance (Å)	Clash overlap (Å)
1:B:170:LYS:NZ	1:B:257:HIS:HD2	1.95	0.64
1:A:35:LYS:NZ	1:B:271:LYS:OXT	2.32	0.63
1:A:170:LYS:NZ	1:A:257:HIS:HD2	1.96	0.63
1:B:119:GLN:NE2	1:B:125:GLN:HE21	1.96	0.63
1:B:119:GLN:HE22	1:B:125:GLN:HE21	1.46	0.62
1:A:4:GLU:CD	7:A:803:HOH:O	2.38	0.62
1:A:23:GLU:HG3	7:A:731:HOH:O	2.00	0.61
1:A:16:ILE:HA	7:A:497:HOH:O	2.02	0.59
1:B:34:LYS:HZ3	1:B:65:ILE:HG12	1.64	0.59
6:A:308:GOL:H32	7:A:800:HOH:O	2.03	0.58
6:A:308:GOL:C3	7:A:800:HOH:O	2.52	0.58
1:B:34:LYS:CD	7:B:843:HOH:O	2.42	0.58
1:B:39:LYS:NZ	1:B:71:ASP:OD2	2.37	0.57
1:B:209:ALA:CB	4:B:303:NAD:C7N	2.82	0.57
1:A:4:GLU:HG2	1:A:8:ARG:CZ	2.35	0.56
1:B:34:LYS:NZ	1:B:65:ILE:CG1	2.60	0.56
1:B:170:LYS:HZ2	1:B:257:HIS:HD2	1.51	0.56
1:A:21[B]:GLU:CD	7:A:693:HOH:O	2.44	0.56
1:A:31:GLN:NE2	7:A:732:HOH:O	2.38	0.56
4:B:303:NAD:O5B	4:B:303:NAD:O3	2.10	0.56
1:B:226:ILE:HD12	1:B:251:ARG:NH1	2.21	0.55
1:A:257:HIS:HE1	7:A:528:HOH:O	1.91	0.53
1:A:44:GLY:H	1:A:143:GLN:NE2	2.07	0.53
1:B:169:THR:OG1	4:B:303:NAD:H6N	2.09	0.52
1:B:34:LYS:HZ1	1:B:65:ILE:CG1	2.09	0.52
1:B:236:GLU:OE1	1:B:238:LYS:NZ	2.41	0.51
1:A:130:ASN:HD22	1:B:149:GLN:NE2	2.08	0.51
1:A:23:GLU:CG	7:A:731:HOH:O	2.58	0.50
1:B:44:GLY:H	1:B:143:GLN:NE2	2.10	0.49
1:B:209:ALA:HB2	4:B:303:NAD:O7N	2.13	0.49
1:A:149:GLN:NE2	1:B:127:THR:H	2.09	0.49
1:A:16:ILE:HB	7:A:497:HOH:O	2.14	0.48
1:B:13:LYS:NZ	7:B:539:HOH:O	2.25	0.48
1:A:95:LYS:HE2	1:A:95:LYS:HB2	1.41	0.47
1:B:115[B]:SER:OG	1:B:131:LYS:HE2	2.14	0.47
1:B:59:GLN:NE2	1:B:99:PRO:HA	2.31	0.45
1:A:13:LYS:CD	1:A:16:ILE:HG22	2.46	0.44
1:A:168:PHE:CZ	6:A:308:GOL:H2	2.53	0.44
1:A:59:GLN:NE2	1:A:99:PRO:HA	2.33	0.44
1:A:59:GLN:HE22	1:A:100:ASP:H	1.66	0.44
1:A:127:THR:H	1:B:149:GLN:NE2	2.14	0.43

Continued on next page...

Continued from previous page...

Atom-1	Atom-2	Interatomic distance (Å)	Clash overlap (Å)
1:B:81:HIS:HE1	7:B:388:HOH:O	2.00	0.43
1:A:170:LYS:HZ2	1:A:257:HIS:HD2	1.64	0.43
1:B:7:MET:HE1	1:B:237:GLY:CA	2.48	0.43
1:B:170:LYS:HZ2	1:B:257:HIS:CD2	2.33	0.43
1:A:190:ARG:HG3	1:A:203:TYR:HB2	2.01	0.43
1:B:254:MET:HE2	1:B:254:MET:HB2	1.77	0.43
1:B:257:HIS:HE1	7:B:439:HOH:O	2.01	0.43
1:A:49:GLN:HG3	1:A:193:LEU:CD1	2.48	0.43
1:A:16:ILE:CA	7:A:497:HOH:O	2.62	0.42
1:B:209:ALA:HB2	4:B:303:NAD:C3N	2.48	0.42
1:A:159:HIS:HD2	1:A:161:ALA:H	1.68	0.42
1:B:59:GLN:HE22	1:B:100:ASP:H	1.67	0.41
1:A:170:LYS:HZ1	1:A:257:HIS:HD2	1.68	0.41
1:A:167:PHE:CE2	4:A:301:NAD:H2N	2.56	0.40
1:B:167:PHE:CE2	4:B:303:NAD:H2N	2.56	0.40
1:B:225:GLY:C	1:B:226:ILE:HG13	2.42	0.40

All (5) symmetry-related close contacts are listed below. The label for Atom-2 includes the symmetry operator and encoded unit-cell translations to be applied.

Atom-1	Atom-2	Interatomic distance (Å)	Clash overlap (Å)
1:A:4:GLU:OE2	7:B:622:HOH:O[2_656]	1.53	0.67
7:A:627:HOH:O	7:B:532:HOH:O[1_655]	1.60	0.60
1:B:68:GLU:OE2	7:A:674:HOH:O[1_554]	2.05	0.15
7:A:420:HOH:O	7:B:781:HOH:O[2_656]	2.09	0.11
1:A:250:LYS:NZ	1:B:214:GLU:OE1[1_655]	2.15	0.05

5.3 Torsion angles [i](#)

5.3.1 Protein backbone [i](#)

In the following table, the Percentiles column shows the percent Ramachandran outliers of the chain as a percentile score with respect to all X-ray entries followed by that with respect to entries of similar resolution.

The Analysed column shows the number of residues for which the backbone conformation was analysed, and the total number of residues.

Mol	Chain	Analysed	Favoured	Allowed	Outliers	Percentiles
1	A	273/271 (101%)	273 (100%)	0	0	100 100

Continued on next page...

Continued from previous page...

Mol	Chain	Analysed	Favoured	Allowed	Outliers	Percentiles	
1	B	272/271 (100%)	272 (100%)	0	0	100	100
All	All	545/542 (101%)	545 (100%)	0	0	100	100

There are no Ramachandran outliers to report.

5.3.2 Protein sidechains [i](#)

In the following table, the Percentiles column shows the percent sidechain outliers of the chain as a percentile score with respect to all X-ray entries followed by that with respect to entries of similar resolution.

The Analysed column shows the number of residues for which the sidechain conformation was analysed, and the total number of residues.

Mol	Chain	Analysed	Rotameric	Outliers	Percentiles	
1	A	230/226 (102%)	228 (99%)	2 (1%)	78	83
1	B	229/226 (101%)	225 (98%)	4 (2%)	60	65
All	All	459/452 (102%)	453 (99%)	6 (1%)	69	74

All (6) residues with a non-rotameric sidechain are listed below:

Mol	Chain	Res	Type
1	A	95	LYS
1	A	192	LEU
1	B	125	GLN
1	B	193	LEU
1	B	229	ASP
1	B	239	GLU

Sometimes sidechains can be flipped to improve hydrogen bonding and reduce clashes. All (15) such sidechains are listed below:

Mol	Chain	Res	Type
1	A	20	GLN
1	A	59	GLN
1	A	117	GLN
1	A	119	GLN
1	A	143	GLN
1	A	149	GLN
1	A	159	HIS

Continued on next page...

Continued from previous page...

Mol	Chain	Res	Type
1	A	257	HIS
1	B	59	GLN
1	B	81	HIS
1	B	117	GLN
1	B	125	GLN
1	B	143	GLN
1	B	149	GLN
1	B	257	HIS

5.3.3 RNA [i](#)

There are no RNA molecules in this entry.

5.4 Non-standard residues in protein, DNA, RNA chains [i](#)

There are no non-standard protein/DNA/RNA residues in this entry.

5.5 Carbohydrates [i](#)

There are no monosaccharides in this entry.

5.6 Ligand geometry [i](#)

Of 12 ligands modelled in this entry, 4 are monoatomic - leaving 8 for Mogul analysis.

In the following table, the Counts columns list the number of bonds (or angles) for which Mogul statistics could be retrieved, the number of bonds (or angles) that are observed in the model and the number of bonds (or angles) that are defined in the Chemical Component Dictionary. The Link column lists molecule types, if any, to which the group is linked. The Z score for a bond length (or angle) is the number of standard deviations the observed value is removed from the expected value. A bond length (or angle) with $|Z| > 2$ is considered an outlier worth inspection. RMSZ is the root-mean-square of all Z scores of the bond lengths (or angles).

Mol	Type	Chain	Res	Link	Bond lengths			Bond angles		
					Counts	RMSZ	$\# Z > 2$	Counts	RMSZ	$\# Z > 2$
5	POP	A	863	2	6,8,8	1.04	0	13,13,13	1.51	4 (30%)
6	GOL	A	308	-	5,5,5	0.76	0	5,5,5	1.47	1 (20%)
4	NAD	B	303	3	41,47,48	3.13	8 (19%)	48,71,73	2.51	15 (31%)
4	NAD	A	301	3	41,47,48	1.62	6 (14%)	48,71,73	1.99	7 (14%)
3	AMP	A	300	4,2	22,25,25	1.06	0	25,38,38	1.29	3 (12%)

Mol	Type	Chain	Res	Link	Bond lengths			Bond angles		
					Counts	RMSZ	# Z > 2	Counts	RMSZ	# Z > 2
6	GOL	B	309	-	5,5,5	1.36	1 (20%)	5,5,5	1.84	1 (20%)
3	AMP	B	302	4,2	22,25,25	1.27	2 (9%)	25,38,38	1.66	6 (24%)
5	POP	B	862	2	6,8,8	1.72	2 (33%)	13,13,13	1.42	2 (15%)

In the following table, the Chirals column lists the number of chiral outliers, the number of chiral centers analysed, the number of these observed in the model and the number defined in the Chemical Component Dictionary. Similar counts are reported in the Torsion and Rings columns. '-' means no outliers of that kind were identified.

Mol	Type	Chain	Res	Link	Chirals	Torsions	Rings
5	POP	A	863	2	-	0/6/6/6	-
6	GOL	A	308	-	-	4/4/4/4	-
4	NAD	B	303	3	-	7/24/60/62	0/5/5/5
4	NAD	A	301	3	-	5/24/60/62	0/5/5/5
3	AMP	A	300	4,2	-	0/6/26/26	0/3/3/3
6	GOL	B	309	-	-	1/4/4/4	-
3	AMP	B	302	4,2	-	0/6/26/26	0/3/3/3
5	POP	B	862	2	-	0/6/6/6	-

All (19) bond length outliers are listed below:

Mol	Chain	Res	Type	Atoms	Z	Observed(Å)	Ideal(Å)
4	B	303	NAD	PA-O5B	-15.06	0.98	1.59
4	B	303	NAD	O5B-C5B	8.99	1.79	1.44
4	B	303	NAD	O4B-C1B	5.63	1.48	1.41
4	A	301	NAD	O4B-C1B	5.34	1.48	1.41
4	A	301	NAD	C2B-C1B	-4.44	1.47	1.53
4	B	303	NAD	C2B-C1B	-3.85	1.47	1.53
3	B	302	AMP	O4'-C1'	3.50	1.46	1.41
4	B	303	NAD	O7N-C7N	3.07	1.32	1.21
5	B	862	POP	P1-O3	-2.87	1.43	1.54
4	A	301	NAD	C2N-N1N	-2.85	1.31	1.35
4	A	301	NAD	O7N-C7N	2.69	1.30	1.21
6	B	309	GOL	O2-C2	2.60	1.51	1.43
3	B	302	AMP	C5-C4	-2.16	1.35	1.40
4	A	301	NAD	C2A-N1A	2.12	1.37	1.33
4	B	303	NAD	C2D-C1D	-2.10	1.50	1.53
4	B	303	NAD	C6N-C5N	2.09	1.43	1.38
4	A	301	NAD	C6A-C5A	-2.06	1.35	1.43
5	B	862	POP	P2-O6	-2.05	1.46	1.54
4	B	303	NAD	O4D-C4D	-2.02	1.40	1.45

All (39) bond angle outliers are listed below:

Mol	Chain	Res	Type	Atoms	Z	Observed(°)	Ideal(°)
4	A	301	NAD	C6N-N1N-C2N	-7.20	115.41	121.97
4	B	303	NAD	C2N-C3N-C4N	7.10	127.45	117.52
4	B	303	NAD	C5N-C6N-N1N	6.94	130.36	120.40
4	B	303	NAD	C6N-N1N-C2N	-6.92	115.66	121.97
4	A	301	NAD	C5N-C6N-N1N	5.54	128.35	120.40
4	A	301	NAD	C2N-C3N-C4N	4.96	124.46	117.52
4	B	303	NAD	C5N-C4N-C3N	-4.95	114.66	120.65
4	A	301	NAD	C5N-C4N-C3N	-4.32	115.42	120.65
4	B	303	NAD	O3D-C3D-C4D	-4.07	99.28	111.05
4	B	303	NAD	C6N-C5N-C4N	-4.06	113.53	119.44
4	B	303	NAD	O5D-C5D-C4D	-3.85	95.72	108.99
3	B	302	AMP	O5'-P-O1P	3.48	116.23	106.47
4	B	303	NAD	O4D-C1D-C2D	3.47	112.00	106.93
4	A	301	NAD	C4A-C5A-N7A	-3.18	106.08	109.40
3	A	300	AMP	O3P-P-O5'	-3.16	98.32	106.73
3	B	302	AMP	O2P-P-O1P	3.16	123.05	110.68
6	B	309	GOL	O2-C2-C3	-3.12	95.37	109.12
4	A	301	NAD	C5A-C6A-N6A	3.08	125.03	120.35
3	B	302	AMP	C3'-C2'-C1'	3.08	105.61	100.98
4	B	303	NAD	C4A-C5A-N7A	-2.93	106.34	109.40
4	B	303	NAD	C5A-C6A-N6A	2.90	124.75	120.35
4	A	301	NAD	C6N-C5N-C4N	-2.89	115.24	119.44
3	B	302	AMP	O3P-P-O5'	-2.89	99.05	106.73
5	B	862	POP	P2-O-P1	-2.85	123.05	132.83
4	B	303	NAD	PA-O5B-C5B	2.82	138.20	121.68
3	A	300	AMP	O2P-P-O1P	2.80	121.65	110.68
3	A	300	AMP	C4-C5-N7	2.70	112.22	109.40
4	B	303	NAD	C2N-N1N-C1D	-2.70	113.13	119.14
6	A	308	GOL	O3-C3-C2	-2.52	98.14	110.20
5	A	863	POP	P2-O-P1	-2.48	124.31	132.83
5	B	862	POP	O6-P2-O5	2.47	117.08	107.64
3	B	302	AMP	C2-N1-C6	-2.42	114.61	118.75
5	A	863	POP	O-P2-O4	-2.36	98.09	111.19
4	B	303	NAD	C2N-C3N-C7N	-2.20	113.89	119.20
4	B	303	NAD	C3N-C2N-N1N	-2.17	118.33	121.21
4	B	303	NAD	O2N-PN-O5D	2.14	117.67	107.75
5	A	863	POP	O3-P1-O2	2.13	115.79	107.64
5	A	863	POP	O6-P2-O5	2.08	115.57	107.64
3	B	302	AMP	C1'-N9-C4	-2.04	123.06	126.64

There are no chirality outliers.

All (17) torsion outliers are listed below:

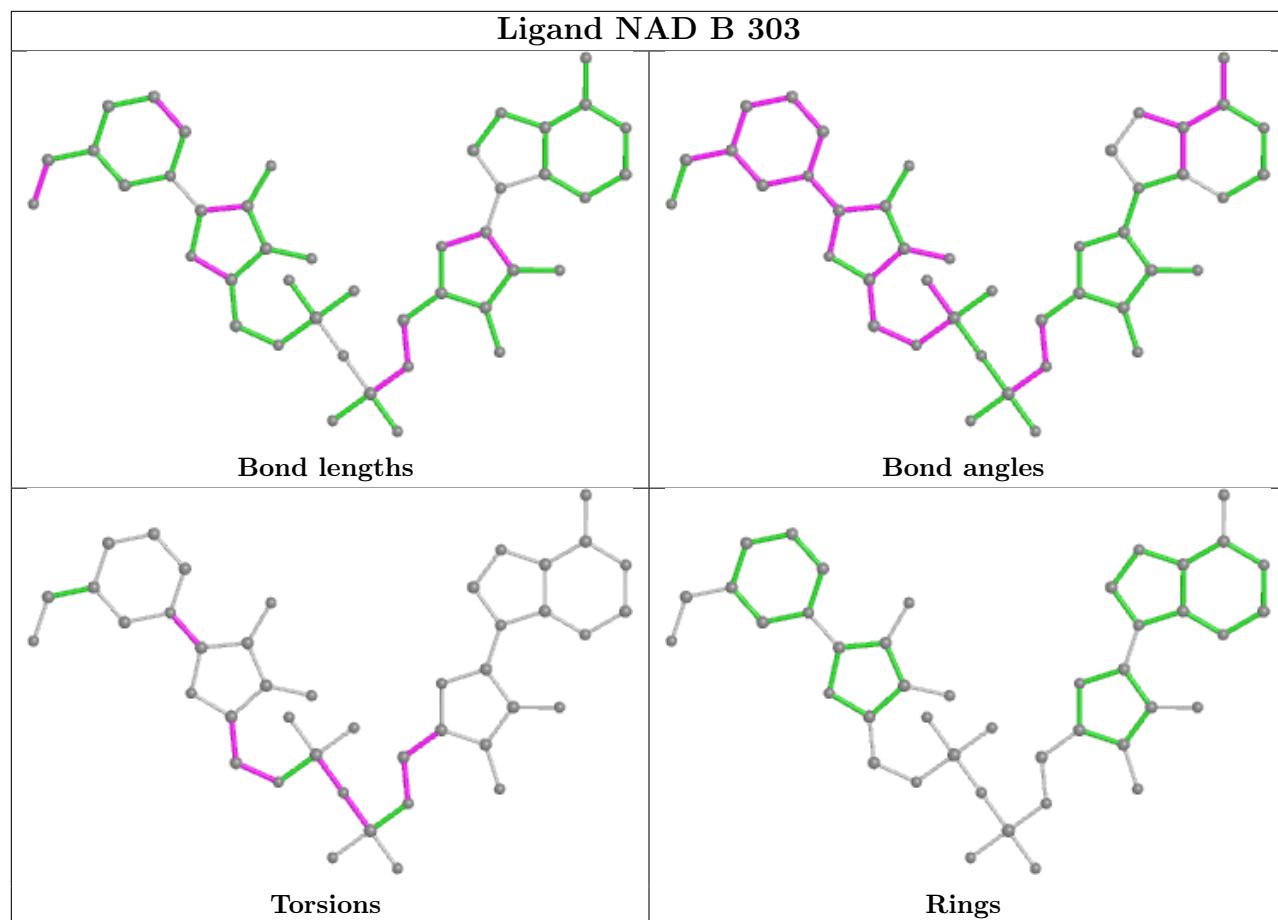
Mol	Chain	Res	Type	Atoms
4	A	301	NAD	PN-O3-PA-O5B
4	B	303	NAD	O4D-C1D-N1N-C6N
6	A	308	GOL	O1-C1-C2-C3
6	A	308	GOL	C1-C2-C3-O3
6	A	308	GOL	O1-C1-C2-O2
6	A	308	GOL	O2-C2-C3-O3
4	A	301	NAD	C4B-C5B-O5B-PA
4	B	303	NAD	C4B-C5B-O5B-PA
4	B	303	NAD	PN-O3-PA-O5B
4	B	303	NAD	PA-O3-PN-O1N
4	A	301	NAD	C4D-C5D-O5D-PN
4	B	303	NAD	C3B-C4B-C5B-O5B
4	B	303	NAD	C4D-C5D-O5D-PN
4	A	301	NAD	PA-O3-PN-O1N
6	B	309	GOL	O1-C1-C2-C3
4	A	301	NAD	O4D-C4D-C5D-O5D
4	B	303	NAD	O4D-C4D-C5D-O5D

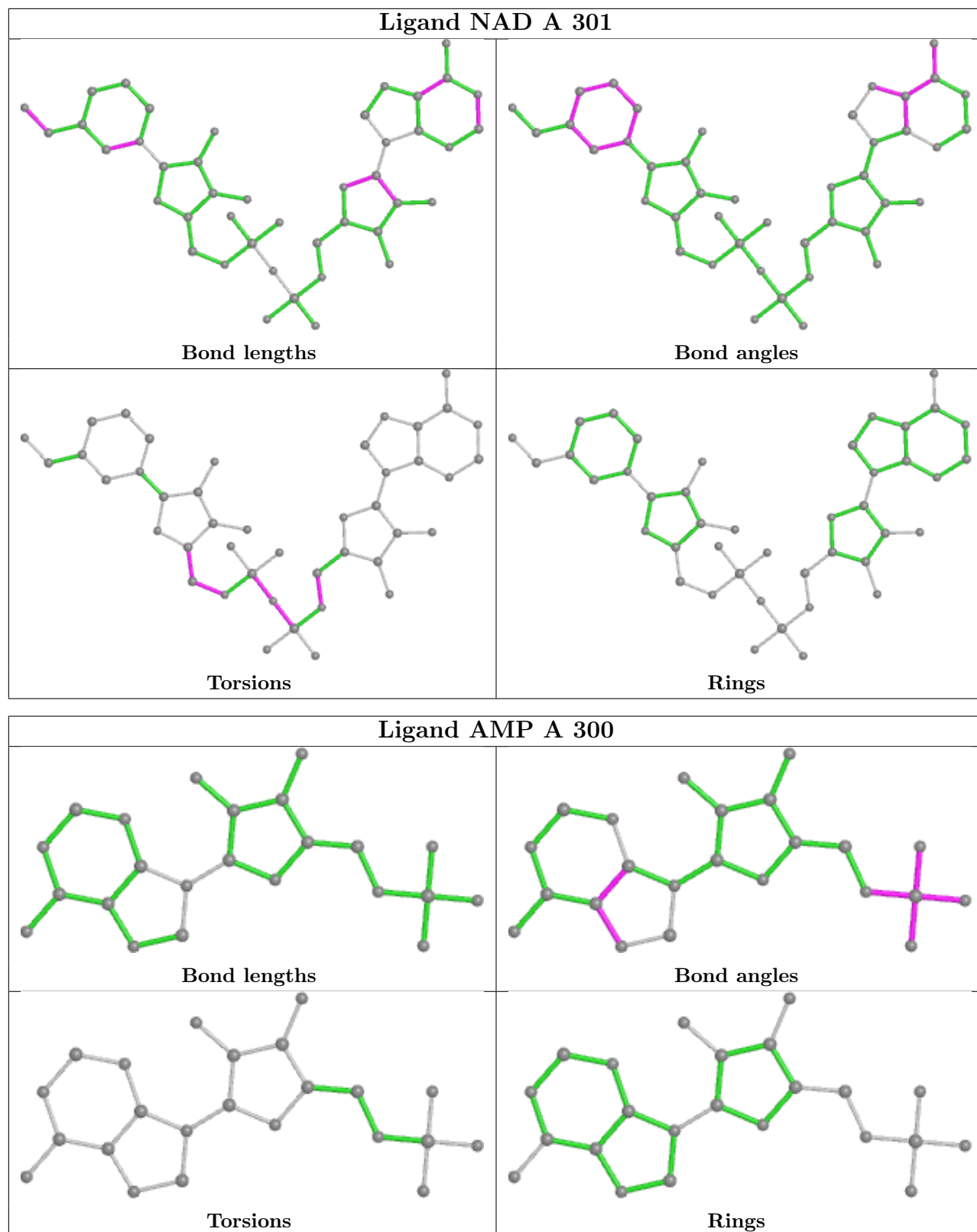
There are no ring outliers.

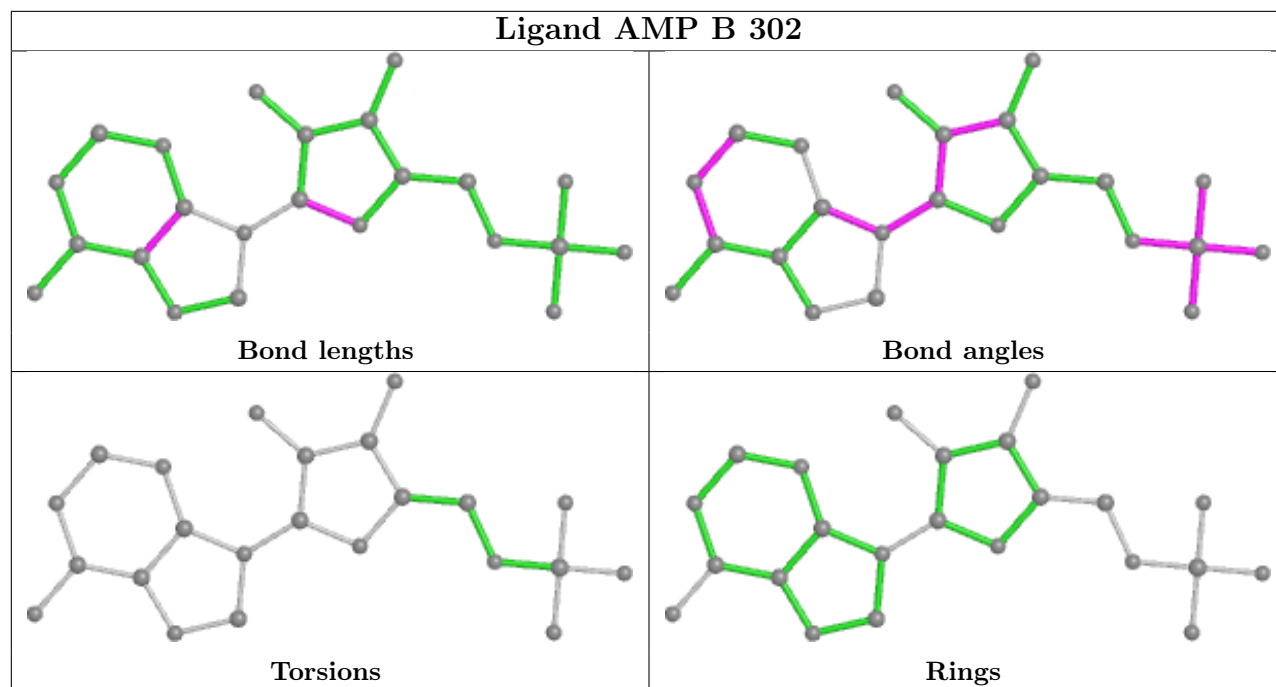
3 monomers are involved in 19 short contacts:

Mol	Chain	Res	Type	Clashes	Symm-Clashes
6	A	308	GOL	5	0
4	B	303	NAD	13	0
4	A	301	NAD	1	0

The following is a two-dimensional graphical depiction of Mogul quality analysis of bond lengths, bond angles, torsion angles, and ring geometry for all instances of the Ligand of Interest. In addition, ligands with molecular weight > 250 and outliers as shown on the validation Tables will also be included. For torsion angles, if less than 5% of the Mogul distribution of torsion angles is within 10 degrees of the torsion angle in question, then that torsion angle is considered an outlier. Any bond that is central to one or more torsion angles identified as an outlier by Mogul will be highlighted in the graph. For rings, the root-mean-square deviation (RMSD) between the ring in question and similar rings identified by Mogul is calculated over all ring torsion angles. If the average RMSD is greater than 60 degrees and the minimal RMSD between the ring in question and any Mogul-identified rings is also greater than 60 degrees, then that ring is considered an outlier. The outliers are highlighted in purple. The color gray indicates Mogul did not find sufficient equivalents in the CSD to analyse the geometry.







5.7 Other polymers [i](#)

There are no such residues in this entry.

5.8 Polymer linkage issues [i](#)

There are no chain breaks in this entry.

6 Fit of model and data

6.1 Protein, DNA and RNA chains

EDS was not executed - this section is therefore empty.

6.2 Non-standard residues in protein, DNA, RNA chains

EDS was not executed - this section is therefore empty.

6.3 Carbohydrates

EDS was not executed - this section is therefore empty.

6.4 Ligands

EDS was not executed - this section is therefore empty.

6.5 Other polymers

EDS was not executed - this section is therefore empty.