



wwPDB X-ray Structure Validation Summary Report ⓘ

Aug 16, 2023 – 09:20 PM EDT

PDB ID : 2F7A
Title : BenM effector binding domain with its effector, cis,cis-muconate
Authors : Clark, T.; Haddad, S.; Ezezika, O.; Neidle, E.; Momany, C.
Deposited on : 2005-11-30
Resolution : 1.90 Å(reported)

This is a wwPDB X-ray Structure Validation Summary Report for a publicly released PDB entry.

We welcome your comments at validation@mail.wwpdb.org

A user guide is available at

<https://www.wwpdb.org/validation/2017/XrayValidationReportHelp>

with specific help available everywhere you see the ⓘ symbol.

The types of validation reports are described at

<http://www.wwpdb.org/validation/2017/FAQs#types>.

The following versions of software and data (see [references ⓘ](#)) were used in the production of this report:

MolProbity : 4.02b-467
Mogul : 1.8.5 (274361), CSD as541be (2020)
Xtriage (Phenix) : 1.13
EDS : 2.35
Percentile statistics : 20191225.v01 (using entries in the PDB archive December 25th 2019)
Refmac : 5.8.0158
CCP4 : 7.0.044 (Gargrove)
Ideal geometry (proteins) : Engh & Huber (2001)
Ideal geometry (DNA, RNA) : Parkinson et al. (1996)
Validation Pipeline (wwPDB-VP) : 2.35

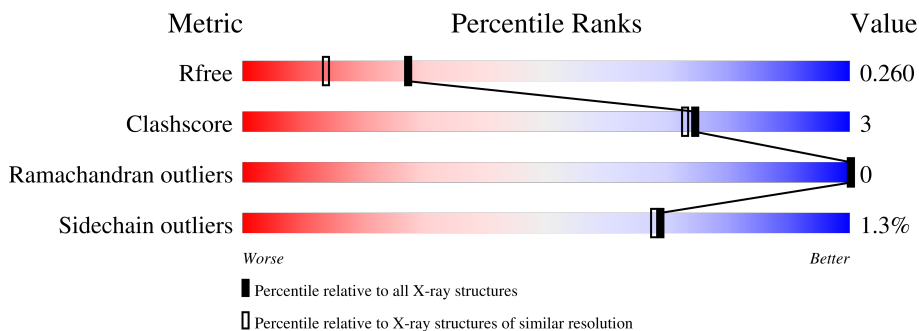
1 Overall quality at a glance

The following experimental techniques were used to determine the structure:

X-RAY DIFFRACTION

The reported resolution of this entry is 1.90 Å.

Percentile scores (ranging between 0-100) for global validation metrics of the entry are shown in the following graphic. The table shows the number of entries on which the scores are based.



Metric	Whole archive (#Entries)	Similar resolution (#Entries, resolution range(Å))
R_{free}	130704	6207 (1.90-1.90)
Clashscore	141614	6847 (1.90-1.90)
Ramachandran outliers	138981	6760 (1.90-1.90)
Sidechain outliers	138945	6760 (1.90-1.90)

The table below summarises the geometric issues observed across the polymeric chains and their fit to the electron density. The red, orange, yellow and green segments of the lower bar indicate the fraction of residues that contain outliers for ≥ 3 , 2, 1 and 0 types of geometric quality criteria respectively. A grey segment represents the fraction of residues that are not modelled. The numeric value for each fraction is indicated below the corresponding segment, with a dot representing fractions $\leq 5\%$.

Mol	Chain	Length	Quality of chain
1	A	232	 89% 9% .
1	B	232	 86% 6% 8%

2 Entry composition [i](#)

There are 6 unique types of molecules in this entry. The entry contains 4054 atoms, of which 4 are hydrogens and 0 are deuteriums.

In the tables below, the ZeroOcc column contains the number of atoms modelled with zero occupancy, the AltConf column contains the number of residues with at least one atom in alternate conformation and the Trace column contains the number of residues modelled with at most 2 atoms.

- Molecule 1 is a protein called HTH-type transcriptional regulator benM.

Mol	Chain	Residues	Atoms					ZeroOcc	AltConf	Trace
			Total	C	N	O	S			
1	A	228	1836	1180	319	332	5	0	3	0
1	B	213	1696	1093	289	309	5	0	1	0

There are 16 discrepancies between the modelled and reference sequences:

Chain	Residue	Modelled	Actual	Comment	Reference
A	305	LEU	-	cloning artifact	UNP O68014
A	306	GLU	-	cloning artifact	UNP O68014
A	307	HIS	-	expression tag	UNP O68014
A	308	HIS	-	expression tag	UNP O68014
A	309	HIS	-	expression tag	UNP O68014
A	310	HIS	-	expression tag	UNP O68014
A	311	HIS	-	expression tag	UNP O68014
A	312	HIS	-	expression tag	UNP O68014
B	305	LEU	-	cloning artifact	UNP O68014
B	306	GLU	-	cloning artifact	UNP O68014
B	307	HIS	-	expression tag	UNP O68014
B	308	HIS	-	expression tag	UNP O68014
B	309	HIS	-	expression tag	UNP O68014
B	310	HIS	-	expression tag	UNP O68014
B	311	HIS	-	expression tag	UNP O68014
B	312	HIS	-	expression tag	UNP O68014

- Molecule 2 is BENZOIC ACID (three-letter code: BEZ) (formula: C₇H₆O₂).



Mol	Chain	Residues	Atoms			ZeroOcc	AltConf
2	A	1	Total	C	O	0	0
			9	7	2		
2	B	1	Total	C	O	0	0
			9	7	2		

- Molecule 3 is ACETATE ION (three-letter code: ACT) (formula: $C_2H_3O_2^-$).



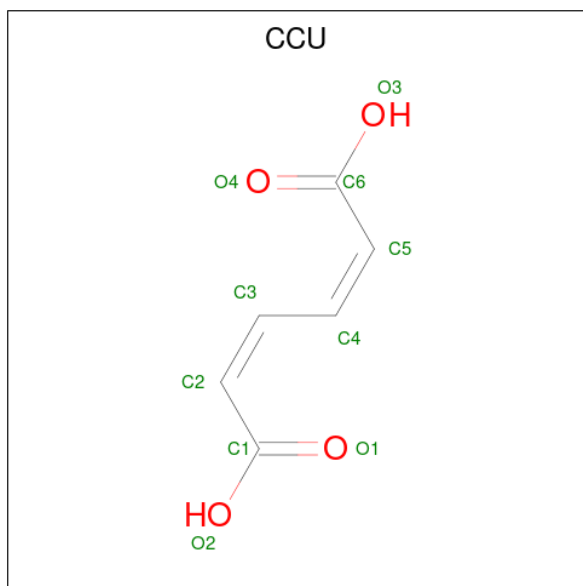
Mol	Chain	Residues	Atoms			ZeroOcc	AltConf
3	B	1	Total	C	O	0	0
			4	2	2		

- Molecule 4 is SULFATE ION (three-letter code: SO4) (formula: O_4S).



Mol	Chain	Residues	Atoms			ZeroOcc	AltConf
4	B	1	Total	O	S	0	0
			5	4	1		

- Molecule 5 is (2Z,4Z)-HEXA-2,4-DIENEDIOIC ACID (three-letter code: CCU) (formula: $C_6H_6O_4$).



Mol	Chain	Residues	Atoms				ZeroOcc	AltConf
5	B	1	Total	C	H	O	0	0
			14	6	4	4		


- Molecule 6 is water.

Mol	Chain	Residues	Atoms		ZeroOcc	AltConf
6	A	273	Total 273	O 273	0	0
6	B	208	Total 208	O 208	0	0

3 Residue-property plots


These plots are drawn for all protein, RNA, DNA and oligosaccharide chains in the entry. The first graphic for a chain summarises the proportions of the various outlier classes displayed in the second graphic. The second graphic shows the sequence view annotated by issues in geometry. Residues are color-coded according to the number of geometric quality criteria for which they contain at least one outlier: green = 0, yellow = 1, orange = 2 and red = 3 or more. Stretches of 2 or more consecutive residues without any outlier are shown as a green connector. Residues present in the sample, but not in the model, are shown in grey.

- Molecule 1: HTH-type transcriptional regulator benM

Chain A:  89% 9%



- Molecule 1: HTH-type transcriptional regulator benM

Chain B:  86% 6% 8%



4 Data and refinement statistics i

Property	Value	Source
Space group	P 21 21 21	Depositor
Cell constants a, b, c, α , β , γ	64.74Å 65.78Å 117.97Å 90.00° 90.00° 90.00°	Depositor
Resolution (Å)	59.03 – 1.90 43.92 – 1.90	Depositor EDS
% Data completeness (in resolution range)	88.5 (59.03-1.90) 88.5 (43.92-1.90)	Depositor EDS
R_{merge}	0.05	Depositor
R_{sym}	(Not available)	Depositor
$\langle I/\sigma(I) \rangle$ ¹	3.80 (at 1.89Å)	Xtrriage
Refinement program	REFMAC refmac_5.2.0005	Depositor
R, R_{free}	0.207 , 0.250 0.216 , 0.260	Depositor DCC
R_{free} test set	1788 reflections (4.99%)	wwPDB-VP
Wilson B-factor (Å ²)	21.9	Xtrriage
Anisotropy	0.153	Xtrriage
Bulk solvent k_{sol} (e/Å ³), B_{sol} (Å ²)	0.34 , 50.2	EDS
L-test for twinning ²	$\langle L \rangle = 0.50$, $\langle L^2 \rangle = 0.33$	Xtrriage
Estimated twinning fraction	0.017 for k,h,-l	Xtrriage
F_o, F_c correlation	0.93	EDS
Total number of atoms	4054	wwPDB-VP
Average B, all atoms (Å ²)	31.0	wwPDB-VP

Xtrriage's analysis on translational NCS is as follows: *The largest off-origin peak in the Patterson function is 7.29% of the height of the origin peak. No significant pseudotranslation is detected.*

¹Intensities estimated from amplitudes.

²Theoretical values of $\langle |L| \rangle$, $\langle L^2 \rangle$ for acentric reflections are 0.5, 0.333 respectively for untwinned datasets, and 0.375, 0.2 for perfectly twinned datasets.

5 Model quality

5.1 Standard geometry

Bond lengths and bond angles in the following residue types are not validated in this section: BEZ, SO4, CCU, ACT

The Z score for a bond length (or angle) is the number of standard deviations the observed value is removed from the expected value. A bond length (or angle) with $|Z| > 5$ is considered an outlier worth inspection. RMSZ is the root-mean-square of all Z scores of the bond lengths (or angles).

Mol	Chain	Bond lengths		Bond angles	
		RMSZ	# Z >5	RMSZ	# Z >5
1	A	0.37	0/1891	0.55	0/2568
1	B	0.35	0/1736	0.54	0/2356
All	All	0.36	0/3627	0.54	0/4924

There are no bond length outliers.

There are no bond angle outliers.

There are no chirality outliers.

There are no planarity outliers.

5.2 Too-close contacts

In the following table, the Non-H and H(model) columns list the number of non-hydrogen atoms and hydrogen atoms in the chain respectively. The H(added) column lists the number of hydrogen atoms added and optimized by MolProbity. The Clashes column lists the number of clashes within the asymmetric unit, whereas Symm-Clashes lists symmetry-related clashes.

Mol	Chain	Non-H	H(model)	H(added)	Clashes	Symm-Clashes
1	A	1836	0	1861	16	0
1	B	1696	0	1740	9	0
2	A	9	0	5	2	0
2	B	9	0	5	0	0
3	B	4	0	3	1	0
4	B	5	0	0	0	0
5	B	10	4	4	0	0
6	A	273	0	0	0	0
6	B	208	0	0	2	0
All	All	4050	4	3618	23	0

The all-atom clashscore is defined as the number of clashes found per 1000 atoms (including

hydrogen atoms). The all-atom clashscore for this structure is 3.

The worst 5 of 23 close contacts within the same asymmetric unit are listed below, sorted by their clash magnitude.

Atom-1	Atom-2	Interatomic distance (Å)	Clash overlap (Å)
1:A:111:LEU:HD23	1:A:292:ILE:HD11	1.70	0.73
1:B:194:LEU:HD12	6:B:1077:HOH:O	1.91	0.71
1:A:100:LEU:HD13	2:A:1003:BEZ:H5	1.76	0.68
1:A:144:PHE:CD1	2:A:1003:BEZ:H4	2.30	0.66
1:B:192:ILE:HG22	1:B:194:LEU:HD13	1.83	0.61

There are no symmetry-related clashes.

5.3 Torsion angles [i](#)

5.3.1 Protein backbone [i](#)

In the following table, the Percentiles column shows the percent Ramachandran outliers of the chain as a percentile score with respect to all X-ray entries followed by that with respect to entries of similar resolution.

The Analysed column shows the number of residues for which the backbone conformation was analysed, and the total number of residues.

Mol	Chain	Analysed	Favoured	Allowed	Outliers	Percentiles	
1	A	229/232 (99%)	225 (98%)	4 (2%)	0	100	100
1	B	212/232 (91%)	204 (96%)	8 (4%)	0	100	100
All	All	441/464 (95%)	429 (97%)	12 (3%)	0	100	100

There are no Ramachandran outliers to report.

5.3.2 Protein sidechains [i](#)

In the following table, the Percentiles column shows the percent sidechain outliers of the chain as a percentile score with respect to all X-ray entries followed by that with respect to entries of similar resolution.

The Analysed column shows the number of residues for which the sidechain conformation was analysed, and the total number of residues.

Mol	Chain	Analysed	Rotameric	Outliers	Percentiles	
1	A	203/204 (100%)	202 (100%)	1 (0%)	88	89
1	B	187/204 (92%)	183 (98%)	4 (2%)	53	48
All	All	390/408 (96%)	385 (99%)	5 (1%)	69	68

All (5) residues with a non-rotameric sidechain are listed below:

Mol	Chain	Res	Type
1	A	89	GLU
1	B	125	GLU
1	B	179	ASP
1	B	194	LEU
1	B	296	GLU

Sometimes sidechains can be flipped to improve hydrogen bonding and reduce clashes. All (4) such sidechains are listed below:

Mol	Chain	Res	Type
1	A	169	HIS
1	A	172	HIS
1	A	206	HIS
1	B	116	HIS

5.3.3 RNA [i](#)

There are no RNA molecules in this entry.

5.4 Non-standard residues in protein, DNA, RNA chains [i](#)

There are no non-standard protein/DNA/RNA residues in this entry.

5.5 Carbohydrates [i](#)

There are no monosaccharides in this entry.

5.6 Ligand geometry [i](#)

5 ligands are modelled in this entry.

In the following table, the Counts columns list the number of bonds (or angles) for which Mogul statistics could be retrieved, the number of bonds (or angles) that are observed in the model and

the number of bonds (or angles) that are defined in the Chemical Component Dictionary. The Link column lists molecule types, if any, to which the group is linked. The Z score for a bond length (or angle) is the number of standard deviations the observed value is removed from the expected value. A bond length (or angle) with $|Z| > 2$ is considered an outlier worth inspection. RMSZ is the root-mean-square of all Z scores of the bond lengths (or angles).

Mol	Type	Chain	Res	Link	Bond lengths			Bond angles		
					Counts	RMSZ	# Z > 2	Counts	RMSZ	# Z > 2
5	CCU	B	1001	-	9,9,9	3.27	3 (33%)	10,10,10	1.70	3 (30%)
2	BEZ	B	1002	-	9,9,9	2.07	1 (11%)	11,11,11	1.07	2 (18%)
2	BEZ	A	1003	-	9,9,9	2.02	1 (11%)	11,11,11	1.07	1 (9%)
3	ACT	B	1004	-	3,3,3	0.77	0	3,3,3	1.27	0
4	SO4	B	1005	-	4,4,4	0.13	0	6,6,6	0.11	0

In the following table, the Chirals column lists the number of chiral outliers, the number of chiral centers analysed, the number of these observed in the model and the number defined in the Chemical Component Dictionary. Similar counts are reported in the Torsion and Rings columns. '-' means no outliers of that kind were identified.

Mol	Type	Chain	Res	Link	Chirals	Torsions	Rings
2	BEZ	A	1003	-	-	4/4/4/4	0/1/1/1
5	CCU	B	1001	-	-	2/7/7/7	-
2	BEZ	B	1002	-	-	0/4/4/4	0/1/1/1

All (5) bond length outliers are listed below:

Mol	Chain	Res	Type	Atoms	Z	Observed(Å)	Ideal(Å)
5	B	1001	CCU	O3-C6	-8.13	1.09	1.30
2	B	1002	BEZ	O1-C	6.07	1.40	1.22
2	A	1003	BEZ	O1-C	5.98	1.40	1.22
5	B	1001	CCU	O1-C1	3.63	1.32	1.23
5	B	1001	CCU	O2-C1	-3.32	1.21	1.30

The worst 5 of 6 bond angle outliers are listed below:

Mol	Chain	Res	Type	Atoms	Z	Observed(°)	Ideal(°)
5	B	1001	CCU	C3-C2-C1	3.44	129.62	123.66
5	B	1001	CCU	O4-C6-C5	-2.70	112.54	120.99
5	B	1001	CCU	O3-C6-C5	2.57	125.86	116.27
2	B	1002	BEZ	O2-C-C1	2.32	120.87	114.85
2	A	1003	BEZ	O2-C-C1	2.21	120.59	114.85

There are no chirality outliers.

5 of 6 torsion outliers are listed below:

Mol	Chain	Res	Type	Atoms
5	B	1001	CCU	C4-C5-C6-O4
5	B	1001	CCU	C4-C5-C6-O3
2	A	1003	BEZ	O2-C-C1-C2
2	A	1003	BEZ	O2-C-C1-C6
2	A	1003	BEZ	O1-C-C1-C2

There are no ring outliers.

2 monomers are involved in 3 short contacts:

Mol	Chain	Res	Type	Clashes	Symm-Clashes
2	A	1003	BEZ	2	0
3	B	1004	ACT	1	0

5.7 Other polymers [i](#)

There are no such residues in this entry.

5.8 Polymer linkage issues [i](#)

There are no chain breaks in this entry.

6 Fit of model and data

6.1 Protein, DNA and RNA chains

Unable to reproduce the depositors R factor - this section is therefore empty.

6.2 Non-standard residues in protein, DNA, RNA chains

Unable to reproduce the depositors R factor - this section is therefore empty.

6.3 Carbohydrates

Unable to reproduce the depositors R factor - this section is therefore empty.

6.4 Ligands

Unable to reproduce the depositors R factor - this section is therefore empty.

6.5 Other polymers

Unable to reproduce the depositors R factor - this section is therefore empty.