



wwPDB X-ray Structure Validation Summary Report ⓘ

Oct 17, 2023 – 07:50 PM EDT

PDB ID : 2E4V
Title : Crystal structure of the extracellular region of the group II metabotropic glutamate receptor complexed with DCG-IV
Authors : Muto, T.; Tsuchiya, D.; Morikawa, K.; Jingami, H.
Deposited on : 2006-12-17
Resolution : 2.40 Å(reported)

This is a wwPDB X-ray Structure Validation Summary Report for a publicly released PDB entry.

We welcome your comments at validation@mail.wwpdb.org

A user guide is available at

<https://www.wwpdb.org/validation/2017/XrayValidationReportHelp>

with specific help available everywhere you see the ⓘ symbol.

The types of validation reports are described at

<http://www.wwpdb.org/validation/2017/FAQs#types>.

The following versions of software and data (see [references ⓘ](#)) were used in the production of this report:

MolProbity : 4.02b-467
Mogul : 1.8.5 (274361), CSD as541be (2020)
Xtriage (Phenix) : 1.13
EDS : 2.36
Percentile statistics : 20191225.v01 (using entries in the PDB archive December 25th 2019)
Refmac : 5.8.0158
CCP4 : 7.0.044 (Gargrove)
Ideal geometry (proteins) : Engh & Huber (2001)
Ideal geometry (DNA, RNA) : Parkinson et al. (1996)
Validation Pipeline (wwPDB-VP) : 2.36

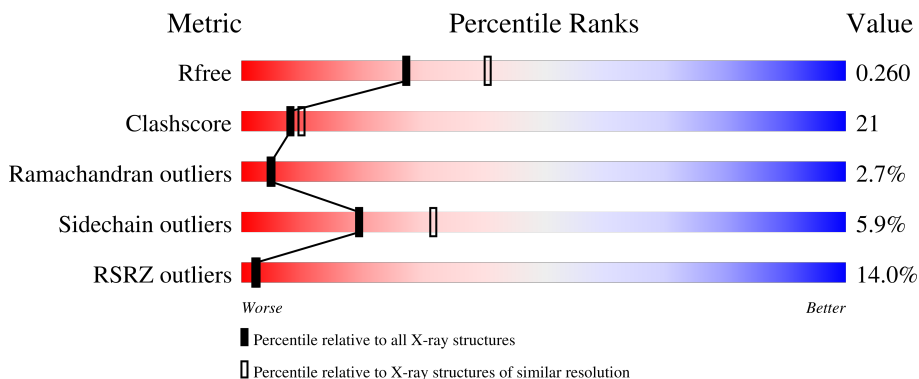
1 Overall quality at a glance

The following experimental techniques were used to determine the structure:

X-RAY DIFFRACTION

The reported resolution of this entry is 2.40 Å.

Percentile scores (ranging between 0-100) for global validation metrics of the entry are shown in the following graphic. The table shows the number of entries on which the scores are based.



Metric	Whole archive (#Entries)	Similar resolution (#Entries, resolution range(Å))
R_{free}	130704	3907 (2.40-2.40)
Clashscore	141614	4398 (2.40-2.40)
Ramachandran outliers	138981	4318 (2.40-2.40)
Sidechain outliers	138945	4319 (2.40-2.40)
RSRZ outliers	127900	3811 (2.40-2.40)

The table below summarises the geometric issues observed across the polymeric chains and their fit to the electron density. The red, orange, yellow and green segments of the lower bar indicate the fraction of residues that contain outliers for ≥ 3 , 2, 1 and 0 types of geometric quality criteria respectively. A grey segment represents the fraction of residues that are not modelled. The numeric value for each fraction is indicated below the corresponding segment, with a dot representing fractions $\leq 5\%$. The upper red bar (where present) indicates the fraction of residues that have poor fit to the electron density. The numeric value is given above the bar.

Mol	Chain	Length	Quality of chain
1	A	555	
1	B	555	

2 Entry composition [i](#)

There are 4 unique types of molecules in this entry. The entry contains 8656 atoms, of which 0 are hydrogens and 0 are deuteriums.

In the tables below, the ZeroOcc column contains the number of atoms modelled with zero occupancy, the AltConf column contains the number of residues with at least one atom in alternate conformation and the Trace column contains the number of residues modelled with at most 2 atoms.

- Molecule 1 is a protein called Metabotropic glutamate receptor 3.

Mol	Chain	Residues	Atoms					ZeroOcc	AltConf	Trace
			Total	C	N	O	S			
1	A	518	4118	2606	709	776	27	0	0	0
1	B	520	4137	2620	711	778	28	0	0	0

There are 12 discrepancies between the modelled and reference sequences:

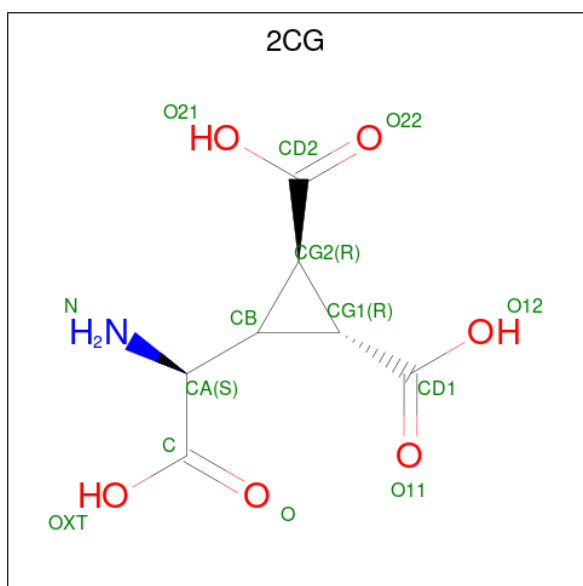
Chain	Residue	Modelled	Actual	Comment	Reference
A	414	GLN	ASN	engineered mutation	UNP P31422
A	439	GLN	ASN	engineered mutation	UNP P31422
A	576	LEU	-	cloning artifact	UNP P31422
A	577	VAL	-	cloning artifact	UNP P31422
A	578	PRO	-	cloning artifact	UNP P31422
A	579	ARG	-	cloning artifact	UNP P31422
B	414	GLN	ASN	engineered mutation	UNP P31422
B	439	GLN	ASN	engineered mutation	UNP P31422
B	576	LEU	-	cloning artifact	UNP P31422
B	577	VAL	-	cloning artifact	UNP P31422
B	578	PRO	-	cloning artifact	UNP P31422
B	579	ARG	-	cloning artifact	UNP P31422

- Molecule 2 is 2-acetamido-2-deoxy-beta-D-glucopyranose (three-letter code: NAG) (formula: C₈H₁₅NO₆).



Mol	Chain	Residues	Atoms				ZeroOcc	AltConf
			Total	C	N	O		
2	A	1	14	8	1	5	0	0
2	B	1	14	8	1	5	0	0

- Molecule 3 is (1R,2R)-3-[(S)-amino(carboxy)methyl]cyclopropane-1,2-dicarboxylic acid (three-letter code: 2CG) (formula: C₇H₉NO₆).



Mol	Chain	Residues	Atoms				ZeroOcc	AltConf
			Total	C	N	O		
3	A	1	14	7	1	6	0	0

Continued on next page...

Continued from previous page...

Mol	Chain	Residues	Atoms				ZeroOcc	AltConf
			Total	C	N	O		
3	B	1	14	7	1	6	0	0

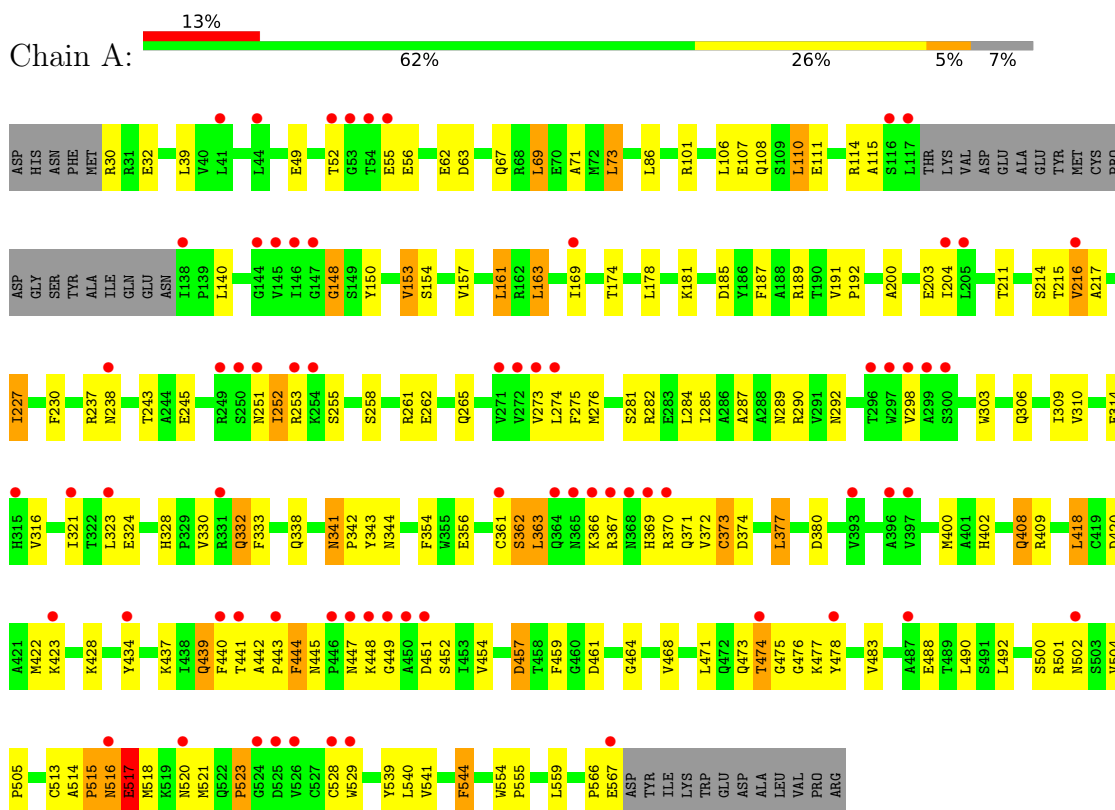
- Molecule 4 is water.

Mol	Chain	Residues	Atoms		ZeroOcc	AltConf
4	A	193	Total	O	0	0
			193	193		
4	B	152	Total	O	0	0
			152	152		

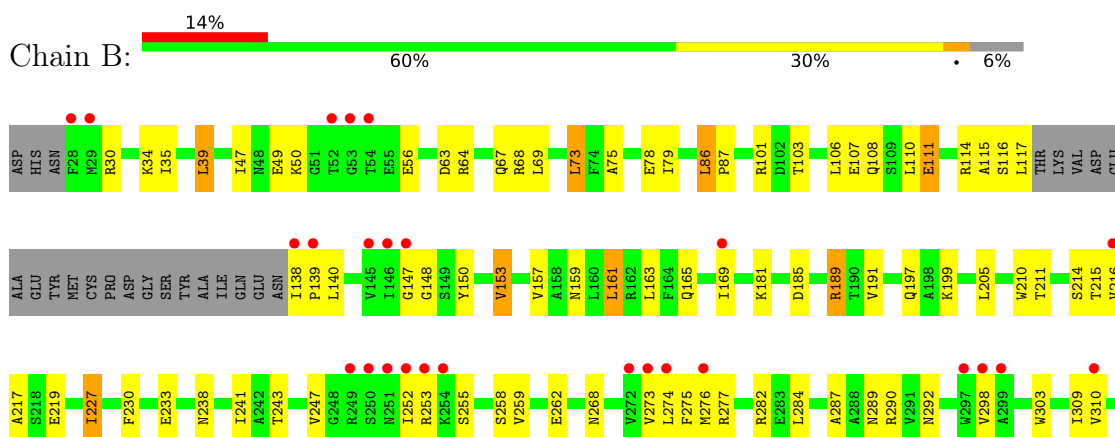
3 Residue-property plots [i](#)

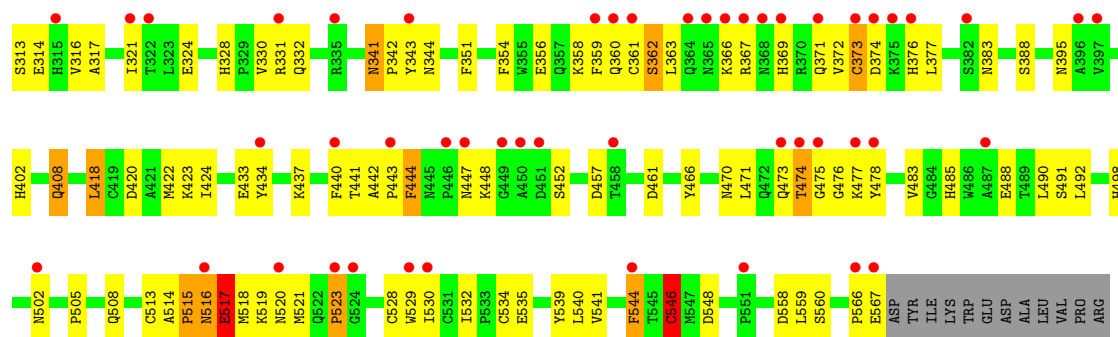
These plots are drawn for all protein, RNA, DNA and oligosaccharide chains in the entry. The first graphic for a chain summarises the proportions of the various outlier classes displayed in the second graphic. The second graphic shows the sequence view annotated by issues in geometry and electron density. Residues are color-coded according to the number of geometric quality criteria for which they contain at least one outlier: green = 0, yellow = 1, orange = 2 and red = 3 or more. A red dot above a residue indicates a poor fit to the electron density ($RSRZ > 2$). Stretches of 2 or more consecutive residues without any outlier are shown as a green connector. Residues present in the sample, but not in the model, are shown in grey.

- Molecule 1: Metabotropic glutamate receptor 3



- Molecule 1: Metabotropic glutamate receptor 3





4 Data and refinement statistics i

Property	Value	Source
Space group	P 1 21 1	Depositor
Cell constants a, b, c, α , β , γ	83.78Å 97.36Å 107.74Å 90.00° 92.87° 90.00°	Depositor
Resolution (Å)	20.00 – 2.40 29.26 – 2.40	Depositor EDS
% Data completeness (in resolution range)	99.7 (20.00-2.40) 99.7 (29.26-2.40)	Depositor EDS
R_{merge}	0.07	Depositor
R_{sym}	0.06	Depositor
$\langle I/\sigma(I) \rangle$ ¹	2.24 (at 2.39Å)	Xtrriage
Refinement program	CNS	Depositor
R, R_{free}	0.236 , 0.268 0.227 , 0.260	Depositor DCC
R_{free} test set	4806 reflections (7.13%)	wwPDB-VP
Wilson B-factor (Å ²)	55.3	Xtrriage
Anisotropy	0.262	Xtrriage
Bulk solvent k_{sol} (e/Å ³), B_{sol} (Å ²)	0.31 , 54.7	EDS
L-test for twinning ²	$\langle L \rangle = 0.49$, $\langle L^2 \rangle = 0.32$	Xtrriage
Estimated twinning fraction	0.027 for h,-k,-l	Xtrriage
F_o, F_c correlation	0.94	EDS
Total number of atoms	8656	wwPDB-VP
Average B, all atoms (Å ²)	63.0	wwPDB-VP

Xtrriage's analysis on translational NCS is as follows: *The largest off-origin peak in the Patterson function is 3.08% of the height of the origin peak. No significant pseudotranslation is detected.*

¹Intensities estimated from amplitudes.

²Theoretical values of $\langle |L| \rangle$, $\langle L^2 \rangle$ for acentric reflections are 0.5, 0.333 respectively for untwinned datasets, and 0.375, 0.2 for perfectly twinned datasets.

5 Model quality [i](#)

5.1 Standard geometry [i](#)

Bond lengths and bond angles in the following residue types are not validated in this section: 2CG, NAG

The Z score for a bond length (or angle) is the number of standard deviations the observed value is removed from the expected value. A bond length (or angle) with $|Z| > 5$ is considered an outlier worth inspection. RMSZ is the root-mean-square of all Z scores of the bond lengths (or angles).

Mol	Chain	Bond lengths		Bond angles	
		RMSZ	# Z >5	RMSZ	# Z >5
1	A	0.40	0/4212	0.67	1/5704 (0.0%)
1	B	0.39	0/4232	0.66	3/5730 (0.1%)
All	All	0.39	0/8444	0.67	4/11434 (0.0%)

There are no bond length outliers.

All (4) bond angle outliers are listed below:

Mol	Chain	Res	Type	Atoms	Z	Observed(°)	Ideal(°)
1	B	546	CYS	CA-CB-SG	-5.80	103.57	114.00
1	A	148	GLY	N-CA-C	-5.78	98.66	113.10
1	B	148	GLY	N-CA-C	-5.57	99.17	113.10
1	B	147	GLY	N-CA-C	5.22	126.14	113.10

There are no chirality outliers.

There are no planarity outliers.

5.2 Too-close contacts [i](#)

In the following table, the Non-H and H(model) columns list the number of non-hydrogen atoms and hydrogen atoms in the chain respectively. The H(added) column lists the number of hydrogen atoms added and optimized by MolProbity. The Clashes column lists the number of clashes within the asymmetric unit, whereas Symm-Clashes lists symmetry-related clashes.

Mol	Chain	Non-H	H(model)	H(added)	Clashes	Symm-Clashes
1	A	4118	0	3993	165	0
1	B	4137	0	4012	182	0
2	A	14	0	13	0	0
2	B	14	0	13	0	0
3	A	14	0	6	3	0

Continued on next page...

Continued from previous page...

Mol	Chain	Non-H	H(model)	H(added)	Clashes	Symm-Clashes
3	B	14	0	6	2	0
4	A	193	0	0	17	0
4	B	152	0	0	10	0
All	All	8656	0	8043	349	0

The all-atom clashscore is defined as the number of clashes found per 1000 atoms (including hydrogen atoms). The all-atom clashscore for this structure is 21.

The worst 5 of 349 close contacts within the same asymmetric unit are listed below, sorted by their clash magnitude.

Atom-1	Atom-2	Interatomic distance (Å)	Clash overlap (Å)
1:A:356:GLU:HA	1:A:361:CYS:HB2	1.35	1.06
1:B:356:GLU:HA	1:B:361:CYS:HB2	1.37	1.04
1:B:30:ARG:HD2	1:B:108:GLN:HE22	1.24	1.01
1:B:402:HIS:HB3	1:B:437:LYS:HE2	1.44	0.98
1:A:420:ASP:HA	1:A:423:LYS:HD3	1.43	0.97

There are no symmetry-related clashes.

5.3 Torsion angles [i](#)

5.3.1 Protein backbone [i](#)

In the following table, the Percentiles column shows the percent Ramachandran outliers of the chain as a percentile score with respect to all X-ray entries followed by that with respect to entries of similar resolution.

The Analysed column shows the number of residues for which the backbone conformation was analysed, and the total number of residues.

Mol	Chain	Analysed	Favoured	Allowed	Outliers	Percentiles	
1	A	514/555 (93%)	464 (90%)	37 (7%)	13 (2%)	5	6
1	B	516/555 (93%)	455 (88%)	46 (9%)	15 (3%)	4	4
All	All	1030/1110 (93%)	919 (89%)	83 (8%)	28 (3%)	5	5

5 of 28 Ramachandran outliers are listed below:

Mol	Chain	Res	Type
1	A	362	SER

Continued on next page...

Continued from previous page...

Mol	Chain	Res	Type
1	A	443	PRO
1	A	516	ASN
1	A	523	PRO
1	B	362	SER

5.3.2 Protein sidechains [i](#)

In the following table, the Percentiles column shows the percent sidechain outliers of the chain as a percentile score with respect to all X-ray entries followed by that with respect to entries of similar resolution.

The Analysed column shows the number of residues for which the sidechain conformation was analysed, and the total number of residues.

Mol	Chain	Analysed	Rotameric	Outliers	Percentiles	
1	A	447/481 (93%)	419 (94%)	28 (6%)	18	28
1	B	449/481 (93%)	424 (94%)	25 (6%)	21	34
All	All	896/962 (93%)	843 (94%)	53 (6%)	19	32

5 of 53 residues with a non-rotameric sidechain are listed below:

Mol	Chain	Res	Type
1	B	39	LEU
1	B	161	LEU
1	B	517	GLU
1	B	73	LEU
1	B	110	LEU

Sometimes sidechains can be flipped to improve hydrogen bonding and reduce clashes. 5 of 20 such sidechains are listed below:

Mol	Chain	Res	Type
1	B	341	ASN
1	B	408	GLN
1	B	522	GLN
1	B	473	GLN
1	A	408	GLN

5.3.3 RNA [i](#)

There are no RNA molecules in this entry.

5.4 Non-standard residues in protein, DNA, RNA chains [i](#)

There are no non-standard protein/DNA/RNA residues in this entry.

5.5 Carbohydrates [i](#)

There are no monosaccharides in this entry.

5.6 Ligand geometry [i](#)

4 ligands are modelled in this entry.

In the following table, the Counts columns list the number of bonds (or angles) for which Mogul statistics could be retrieved, the number of bonds (or angles) that are observed in the model and the number of bonds (or angles) that are defined in the Chemical Component Dictionary. The Link column lists molecule types, if any, to which the group is linked. The Z score for a bond length (or angle) is the number of standard deviations the observed value is removed from the expected value. A bond length (or angle) with $|Z| > 2$ is considered an outlier worth inspection. RMSZ is the root-mean-square of all Z scores of the bond lengths (or angles).

Mol	Type	Chain	Res	Link	Bond lengths			Bond angles		
					Counts	RMSZ	# Z > 2	Counts	RMSZ	# Z > 2
2	NAG	B	802	1	14,14,15	0.59	0	17,19,21	0.63	0
2	NAG	A	801	1	14,14,15	0.65	0	17,19,21	0.63	0
3	2CG	A	1001	-	12,14,14	1.07	0	16,21,21	2.04	4 (25%)
3	2CG	B	2001	-	12,14,14	1.08	0	16,21,21	2.06	4 (25%)

In the following table, the Chirals column lists the number of chiral outliers, the number of chiral centers analysed, the number of these observed in the model and the number defined in the Chemical Component Dictionary. Similar counts are reported in the Torsion and Rings columns. '-' means no outliers of that kind were identified.

Mol	Type	Chain	Res	Link	Chirals	Torsions	Rings
2	NAG	B	802	1	-	4/6/23/26	0/1/1/1
2	NAG	A	801	1	-	3/6/23/26	0/1/1/1
3	2CG	A	1001	-	-	8/16/25/25	0/1/1/1
3	2CG	B	2001	-	-	7/16/25/25	0/1/1/1

There are no bond length outliers.

The worst 5 of 8 bond angle outliers are listed below:

Mol	Chain	Res	Type	Atoms	Z	Observed(°)	Ideal(°)
3	B	2001	2CG	CG1-CG2-CD2	-4.48	108.55	118.04
3	A	1001	2CG	CG1-CG2-CD2	-4.37	108.80	118.04
3	B	2001	2CG	CG2-CG1-CD1	-3.96	109.65	118.04
3	A	1001	2CG	CG2-CG1-CD1	-3.88	109.82	118.04
3	A	1001	2CG	CB-CG1-CD1	-2.78	110.13	117.09

There are no chirality outliers.

5 of 22 torsion outliers are listed below:

Mol	Chain	Res	Type	Atoms
2	A	801	NAG	C8-C7-N2-C2
2	A	801	NAG	O7-C7-N2-C2
2	B	802	NAG	C8-C7-N2-C2
2	B	802	NAG	O7-C7-N2-C2
3	A	1001	2CG	O11-CD1-CG1-CB

There are no ring outliers.

2 monomers are involved in 5 short contacts:

Mol	Chain	Res	Type	Clashes	Symm-Clashes
3	A	1001	2CG	3	0
3	B	2001	2CG	2	0

5.7 Other polymers [i](#)

There are no such residues in this entry.

5.8 Polymer linkage issues [i](#)

There are no chain breaks in this entry.

6 Fit of model and data [i](#)

6.1 Protein, DNA and RNA chains [i](#)

In the following table, the column labelled ‘#RSRZ > 2’ contains the number (and percentage) of RSRZ outliers, followed by percent RSRZ outliers for the chain as percentile scores relative to all X-ray entries and entries of similar resolution. The OWAB column contains the minimum, median, 95th percentile and maximum values of the occupancy-weighted average B-factor per residue. The column labelled ‘Q < 0.9’ lists the number of (and percentage) of residues with an average occupancy less than 0.9.

Mol	Chain	Analysed	<RSRZ>	#RSRZ>2	OWAB(Å ²)	Q<0.9
1	A	518/555 (93%)	0.73	70 (13%) 3 2	31, 60, 100, 136	0
1	B	520/555 (93%)	0.67	75 (14%) 2 2	29, 62, 102, 136	0
All	All	1038/1110 (93%)	0.70	145 (13%) 2 2	29, 61, 101, 136	0

The worst 5 of 145 RSRZ outliers are listed below:

Mol	Chain	Res	Type	RSRZ
1	B	516	ASN	13.0
1	A	368	ASN	11.2
1	B	368	ASN	11.1
1	A	516	ASN	9.9
1	A	250	SER	9.2

6.2 Non-standard residues in protein, DNA, RNA chains [i](#)

There are no non-standard protein/DNA/RNA residues in this entry.

6.3 Carbohydrates [i](#)

There are no monosaccharides in this entry.

6.4 Ligands [i](#)

In the following table, the Atoms column lists the number of modelled atoms in the group and the number defined in the chemical component dictionary. The B-factors column lists the minimum, median, 95th percentile and maximum values of B factors of atoms in the group. The column labelled ‘Q < 0.9’ lists the number of atoms with occupancy less than 0.9.

Mol	Type	Chain	Res	Atoms	RSCC	RSR	B-factors(\AA^2)	Q<0.9
2	NAG	B	802	14/15	0.84	0.20	88,91,95,95	0
2	NAG	A	801	14/15	0.85	0.24	89,92,95,96	0
3	2CG	B	2001	14/14	0.94	0.22	38,42,45,46	0
3	2CG	A	1001	14/14	0.96	0.22	35,40,42,46	0

6.5 Other polymers [i](#)

There are no such residues in this entry.