



Full wwPDB X-ray Structure Validation Report ⓘ

Oct 17, 2023 – 11:35 PM EDT

PDB ID : 2E4G
Title : RebH with bound L-Trp
Authors : Blasiak, L.C.; Drennan, C.L.
Deposited on : 2006-12-07
Resolution : 2.08 Å(reported)

This is a Full wwPDB X-ray Structure Validation Report for a publicly released PDB entry.

We welcome your comments at validation@mail.wwpdb.org

A user guide is available at

<https://www.wwpdb.org/validation/2017/XrayValidationReportHelp>

with specific help available everywhere you see the ⓘ symbol.

The types of validation reports are described at

<http://www.wwpdb.org/validation/2017/FAQs#types>.

The following versions of software and data (see [references ⓘ](#)) were used in the production of this report:

MolProbity : 4.02b-467
Mogul : 1.8.5 (274361), CSD as541be (2020)
Xtrriage (Phenix) : 1.13
EDS : 2.36
Percentile statistics : 20191225.v01 (using entries in the PDB archive December 25th 2019)
Refmac : 5.8.0158
CCP4 : 7.0.044 (Gargrove)
Ideal geometry (proteins) : Engh & Huber (2001)
Ideal geometry (DNA, RNA) : Parkinson et al. (1996)
Validation Pipeline (wwPDB-VP) : 2.36

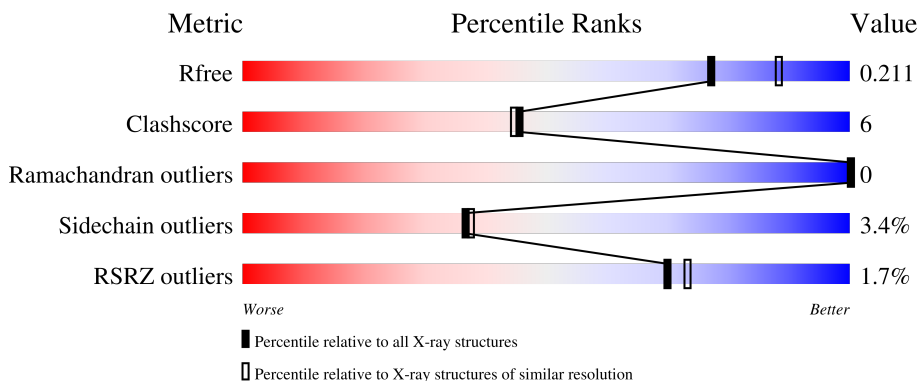
1 Overall quality at a glance

The following experimental techniques were used to determine the structure:

X-RAY DIFFRACTION

The reported resolution of this entry is 2.08 Å.

Percentile scores (ranging between 0-100) for global validation metrics of the entry are shown in the following graphic. The table shows the number of entries on which the scores are based.



Metric	Whole archive (#Entries)	Similar resolution (#Entries, resolution range(Å))
R_{free}	130704	6189 (2.10-2.06)
Clashscore	141614	6738 (2.10-2.06)
Ramachandran outliers	138981	6663 (2.10-2.06)
Sidechain outliers	138945	6664 (2.10-2.06)
RSRZ outliers	127900	6057 (2.10-2.06)

The table below summarises the geometric issues observed across the polymeric chains and their fit to the electron density. The red, orange, yellow and green segments of the lower bar indicate the fraction of residues that contain outliers for ≥ 3 , 2, 1 and 0 types of geometric quality criteria respectively. A grey segment represents the fraction of residues that are not modelled. The numeric value for each fraction is indicated below the corresponding segment, with a dot representing fractions $\leq 5\%$. The upper red bar (where present) indicates the fraction of residues that have poor fit to the electron density. The numeric value is given above the bar.

Mol	Chain	Length	Quality of chain
1	A	550	 80% 15% . .
1	B	550	 2% 80% 15% . .

2 Entry composition [i](#)

There are 3 unique types of molecules in this entry. The entry contains 9338 atoms, of which 0 are hydrogens and 0 are deuteriums.

In the tables below, the ZeroOcc column contains the number of atoms modelled with zero occupancy, the AltConf column contains the number of residues with at least one atom in alternate conformation and the Trace column contains the number of residues modelled with at most 2 atoms.

- Molecule 1 is a protein called Tryptophan halogenase.

Mol	Chain	Residues	Atoms					ZeroOcc	AltConf	Trace
			Total	C	N	O	S			
1	A	528	4238	2694	738	787	19	0	0	0
1	B	528	4237	2693	738	787	19	0	0	0

There are 40 discrepancies between the modelled and reference sequences:

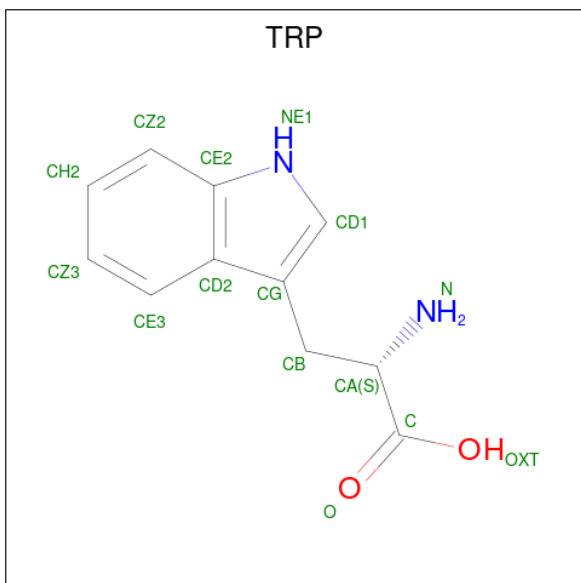
Chain	Residue	Modelled	Actual	Comment	Reference
A	-19	MET	-	cloning artifact	UNP Q8KHZ8
A	-18	GLY	-	cloning artifact	UNP Q8KHZ8
A	-17	SER	-	cloning artifact	UNP Q8KHZ8
A	-16	SER	-	cloning artifact	UNP Q8KHZ8
A	-15	HIS	-	cloning artifact	UNP Q8KHZ8
A	-14	HIS	-	cloning artifact	UNP Q8KHZ8
A	-13	HIS	-	cloning artifact	UNP Q8KHZ8
A	-12	HIS	-	cloning artifact	UNP Q8KHZ8
A	-11	HIS	-	cloning artifact	UNP Q8KHZ8
A	-10	HIS	-	cloning artifact	UNP Q8KHZ8
A	-9	SER	-	cloning artifact	UNP Q8KHZ8
A	-8	SER	-	cloning artifact	UNP Q8KHZ8
A	-7	GLY	-	cloning artifact	UNP Q8KHZ8
A	-6	LEU	-	cloning artifact	UNP Q8KHZ8
A	-5	VAL	-	cloning artifact	UNP Q8KHZ8
A	-4	PRO	-	cloning artifact	UNP Q8KHZ8
A	-3	ARG	-	cloning artifact	UNP Q8KHZ8
A	-2	GLY	-	cloning artifact	UNP Q8KHZ8
A	-1	SER	-	cloning artifact	UNP Q8KHZ8
A	0	HIS	-	cloning artifact	UNP Q8KHZ8
B	-19	MET	-	cloning artifact	UNP Q8KHZ8
B	-18	GLY	-	cloning artifact	UNP Q8KHZ8
B	-17	SER	-	cloning artifact	UNP Q8KHZ8
B	-16	SER	-	cloning artifact	UNP Q8KHZ8
B	-15	HIS	-	cloning artifact	UNP Q8KHZ8

Continued on next page...

Continued from previous page...

Chain	Residue	Modelled	Actual	Comment	Reference
B	-14	HIS	-	cloning artifact	UNP Q8KHZ8
B	-13	HIS	-	cloning artifact	UNP Q8KHZ8
B	-12	HIS	-	cloning artifact	UNP Q8KHZ8
B	-11	HIS	-	cloning artifact	UNP Q8KHZ8
B	-10	HIS	-	cloning artifact	UNP Q8KHZ8
B	-9	SER	-	cloning artifact	UNP Q8KHZ8
B	-8	SER	-	cloning artifact	UNP Q8KHZ8
B	-7	GLY	-	cloning artifact	UNP Q8KHZ8
B	-6	LEU	-	cloning artifact	UNP Q8KHZ8
B	-5	VAL	-	cloning artifact	UNP Q8KHZ8
B	-4	PRO	-	cloning artifact	UNP Q8KHZ8
B	-3	ARG	-	cloning artifact	UNP Q8KHZ8
B	-2	GLY	-	cloning artifact	UNP Q8KHZ8
B	-1	SER	-	cloning artifact	UNP Q8KHZ8
B	0	HIS	-	cloning artifact	UNP Q8KHZ8

- Molecule 2 is TRYPTOPHAN (three-letter code: TRP) (formula: $C_{11}H_{12}N_2O_2$).



Mol	Chain	Residues	Atoms				ZeroOcc	AltConf
			Total	C	N	O		
2	A	1	15	11	2	2	0	0
2	B	1	15	11	2	2	0	0

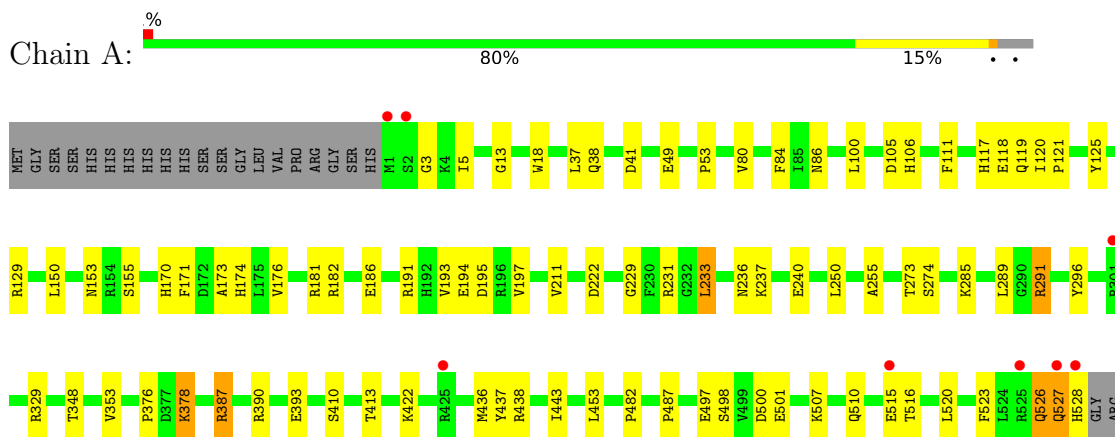
- Molecule 3 is water.

Mol	Chain	Residues	Atoms		ZeroOcc	AltConf
3	A	435	Total 435	O 435	0	0
3	B	398	Total 398	O 398	0	0

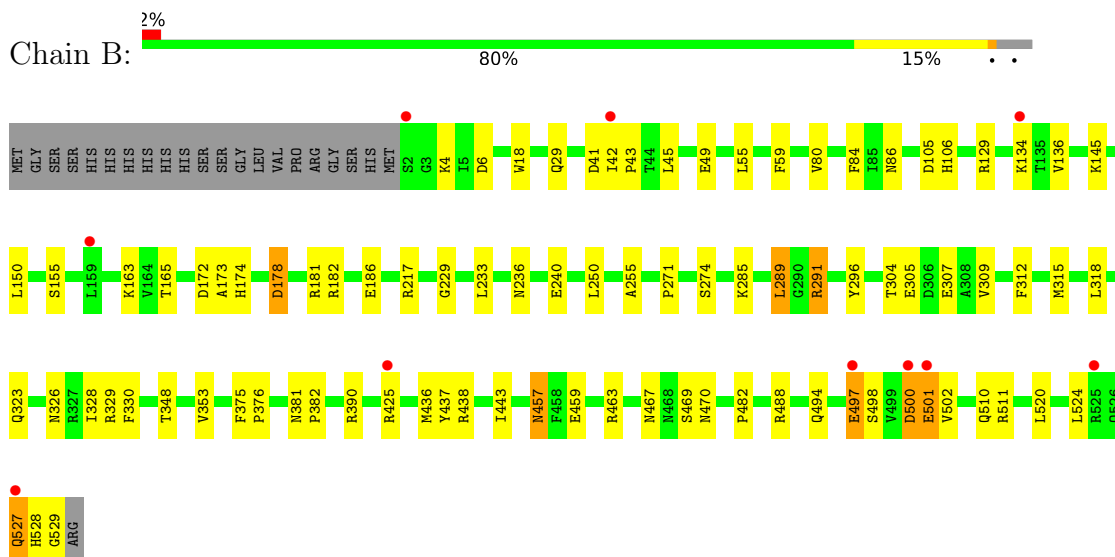
3 Residue-property plots [i](#)

These plots are drawn for all protein, RNA, DNA and oligosaccharide chains in the entry. The first graphic for a chain summarises the proportions of the various outlier classes displayed in the second graphic. The second graphic shows the sequence view annotated by issues in geometry and electron density. Residues are color-coded according to the number of geometric quality criteria for which they contain at least one outlier: green = 0, yellow = 1, orange = 2 and red = 3 or more. A red dot above a residue indicates a poor fit to the electron density ($RSRZ > 2$). Stretches of 2 or more consecutive residues without any outlier are shown as a green connector. Residues present in the sample, but not in the model, are shown in grey.

- Molecule 1: Tryptophan halogenase



- Molecule 1: Tryptophan halogenase



4 Data and refinement statistics

Property	Value	Source
Space group	P 62	Depositor
Cell constants a, b, c, α , β , γ	114.75Å 114.75Å 231.23Å 90.00° 90.00° 120.00°	Depositor
Resolution (Å)	41.80 – 2.08 41.76 – 2.08	Depositor EDS
% Data completeness (in resolution range)	93.7 (41.80-2.08) 93.7 (41.76-2.08)	Depositor EDS
R_{merge}	(Not available)	Depositor
R_{sym}	0.08	Depositor
$\langle I/\sigma(I) \rangle$ ¹	2.70 (at 2.08Å)	Xtrriage
Refinement program	CNS	Depositor
R, R_{free}	0.186 , 0.212 0.186 , 0.211	Depositor DCC
R_{free} test set	5128 reflections (4.99%)	wwPDB-VP
Wilson B-factor (Å ²)	27.6	Xtrriage
Anisotropy	0.177	Xtrriage
Bulk solvent k_{sol} (e/Å ³), B_{sol} (Å ²)	0.38 , 50.3	EDS
L-test for twinning ²	$\langle L \rangle = 0.50$, $\langle L^2 \rangle = 0.33$	Xtrriage
Estimated twinning fraction	0.043 for h,-h-k,-l	Xtrriage
F_o, F_c correlation	0.96	EDS
Total number of atoms	9338	wwPDB-VP
Average B, all atoms (Å ²)	32.0	wwPDB-VP

Xtrriage's analysis on translational NCS is as follows: *The largest off-origin peak in the Patterson function is 3.21% of the height of the origin peak. No significant pseudotranslation is detected.*

¹Intensities estimated from amplitudes.

²Theoretical values of $\langle |L| \rangle$, $\langle L^2 \rangle$ for acentric reflections are 0.5, 0.333 respectively for untwinned datasets, and 0.375, 0.2 for perfectly twinned datasets.

5 Model quality [i](#)

5.1 Standard geometry [i](#)

The Z score for a bond length (or angle) is the number of standard deviations the observed value is removed from the expected value. A bond length (or angle) with $|Z| > 5$ is considered an outlier worth inspection. RMSZ is the root-mean-square of all Z scores of the bond lengths (or angles).

Mol	Chain	Bond lengths		Bond angles	
		RMSZ	# Z >5	RMSZ	# Z >5
1	A	0.36	0/4355	0.59	0/5911
1	B	0.35	0/4354	0.58	0/5909
All	All	0.35	0/8709	0.59	0/11820

There are no bond length outliers.

There are no bond angle outliers.

There are no chirality outliers.

There are no planarity outliers.

5.2 Too-close contacts [i](#)

In the following table, the Non-H and H(model) columns list the number of non-hydrogen atoms and hydrogen atoms in the chain respectively. The H(added) column lists the number of hydrogen atoms added and optimized by MolProbity. The Clashes column lists the number of clashes within the asymmetric unit, whereas Symm-Clashes lists symmetry-related clashes.

Mol	Chain	Non-H	H(model)	H(added)	Clashes	Symm-Clashes
1	A	4238	0	4040	54	0
1	B	4237	0	4038	54	0
2	A	15	0	9	0	0
2	B	15	0	9	0	0
3	A	435	0	0	11	0
3	B	398	0	0	2	0
All	All	9338	0	8096	106	0

The all-atom clashscore is defined as the number of clashes found per 1000 atoms (including hydrogen atoms). The all-atom clashscore for this structure is 6.

All (106) close contacts within the same asymmetric unit are listed below, sorted by their clash magnitude.

Atom-1	Atom-2	Interatomic distance (Å)	Clash overlap (Å)
1:A:49:GLU:HG3	1:A:173:ALA:HB2	1.50	0.92
1:B:49:GLU:HG3	1:B:173:ALA:HB2	1.59	0.85
1:B:467:ASN:H	1:B:470:ASN:HD22	1.31	0.77
1:B:45:LEU:H	1:B:326:ASN:HD21	1.39	0.69
1:B:437:TYR:HB2	1:B:443:ILE:HD11	1.75	0.69
1:B:467:ASN:HD22	1:B:469:SER:H	1.42	0.68
1:A:41:ASP:HB2	3:A:1170:HOH:O	1.97	0.65
1:A:49:GLU:CG	1:A:173:ALA:HB2	2.25	0.64
1:B:18:TRP:CZ2	1:B:181:ARG:HG3	2.34	0.63
1:B:497:GLU:HG3	1:B:498:SER:N	2.13	0.62
1:B:467:ASN:ND2	1:B:469:SER:H	1.97	0.62
1:A:528:HIS:HD2	3:A:1237:HOH:O	1.81	0.62
1:A:13:GLY:HA3	1:A:38:GLN:HG3	1.80	0.61
1:B:304:THR:OG1	1:B:307:GLU:HG3	2.00	0.61
1:A:387:ARG:NH2	1:A:390:ARG:HD2	2.16	0.60
1:B:467:ASN:H	1:B:470:ASN:ND2	1.98	0.60
1:B:42:ILE:HG13	1:B:42:ILE:O	2.00	0.59
1:B:494:GLN:O	1:B:497:GLU:HG3	2.02	0.59
1:A:387:ARG:HD3	1:B:436:MET:SD	2.43	0.59
1:B:497:GLU:HG3	1:B:498:SER:H	1.68	0.58
1:A:129:ARG:HD3	3:A:1133:HOH:O	2.03	0.58
1:A:413:THR:HG22	1:A:422:LYS:HE3	1.85	0.58
1:A:487:PRO:HG2	1:B:375:PHE:O	2.04	0.57
1:A:237:LYS:HD3	3:A:1425:HOH:O	2.04	0.56
1:A:498:SER:O	1:A:501:GLU:HG2	2.05	0.56
1:A:18:TRP:CE2	1:A:181:ARG:HG3	2.41	0.56
1:A:18:TRP:CZ2	1:A:181:ARG:HG3	2.41	0.56
1:A:182:ARG:O	1:A:186:GLU:HB2	2.06	0.56
1:B:274:SER:HB2	1:B:285:LYS:HB3	1.88	0.55
1:A:5:ILE:HG23	1:A:222:ASP:HB2	1.89	0.55
1:A:37:LEU:HD12	1:A:193:VAL:HB	1.89	0.55
1:A:453:LEU:HD11	3:A:1189:HOH:O	2.06	0.54
1:A:387:ARG:HA	1:A:387:ARG:HE	1.73	0.53
1:A:38:GLN:O	1:A:194:GLU:HA	2.08	0.53
1:A:3:GLY:O	1:A:378:LYS:HB2	2.09	0.52
1:A:410:SER:O	1:A:422:LYS:NZ	2.43	0.52
1:A:437:TYR:HB2	1:A:443:ILE:HD11	1.89	0.52
1:A:236:ASN:O	1:A:240:GLU:HA	2.10	0.52
1:B:172:ASP:OD1	1:B:174:HIS:HD2	1.94	0.51
1:B:250:LEU:HD13	1:B:353:VAL:HG23	1.93	0.51
1:A:191:ARG:HD3	3:A:1207:HOH:O	2.11	0.50
1:B:528:HIS:O	1:B:529:GLY:C	2.48	0.50

Continued on next page...

Continued from previous page...

Atom-1	Atom-2	Interatomic distance (Å)	Clash overlap (Å)
1:B:255:ALA:HA	1:B:296:TYR:O	2.12	0.50
1:B:501:GLU:HG2	1:B:502:VAL:N	2.26	0.49
1:B:289:LEU:O	1:B:291:ARG:HD2	2.13	0.49
1:B:86:ASN:HA	1:B:105:ASP:OD2	2.12	0.49
1:B:129:ARG:HB3	1:B:134:LYS:HB3	1.94	0.49
1:A:231:ARG:HG3	3:A:1319:HOH:O	2.13	0.48
1:A:523:PHE:CE2	1:A:527:GLN:HG3	2.48	0.48
1:B:467:ASN:HD21	1:B:469:SER:CB	2.27	0.48
1:B:236:ASN:O	1:B:240:GLU:HA	2.14	0.48
1:B:438:ARG:HA	1:B:482:PRO:HA	1.96	0.48
1:B:524:LEU:O	1:B:528:HIS:HB2	2.14	0.47
1:B:80:VAL:HB	1:B:150:LEU:HD21	1.97	0.47
1:B:459:GLU:O	1:B:463:ARG:HG3	2.14	0.47
1:B:129:ARG:NH1	1:B:500:ASP:OD1	2.48	0.47
1:A:118:GLU:O	1:A:119:GLN:HB2	2.15	0.46
1:A:125:TYR:O	1:A:129:ARG:HG3	2.15	0.46
1:A:507:LYS:NZ	1:A:510:GLN:HE22	2.13	0.46
1:B:488:ARG:HD2	3:B:1211:HOH:O	2.14	0.46
1:A:274:SER:HB2	1:A:285:LYS:HB3	1.96	0.46
1:B:4:LYS:NZ	1:B:6:ASP:OD1	2.49	0.46
1:A:526:GLN:CG	1:A:527:GLN:N	2.79	0.45
1:A:229:GLY:HA2	1:A:348:THR:OG1	2.16	0.45
1:B:467:ASN:N	1:B:470:ASN:HD22	2.05	0.45
1:B:55:LEU:O	1:B:59:PHE:HB3	2.16	0.45
1:B:155:SER:HB2	1:B:520:LEU:HA	1.98	0.45
1:A:174:HIS:HE1	3:A:1403:HOH:O	2.00	0.44
1:A:233:LEU:O	1:A:237:LYS:HB3	2.17	0.44
1:A:387:ARG:HE	1:A:387:ARG:CA	2.30	0.44
1:A:86:ASN:HA	1:A:105:ASP:OD2	2.18	0.44
1:A:153:ASN:ND2	3:A:1089:HOH:O	2.50	0.44
1:A:289:LEU:O	1:A:291:ARG:HD2	2.18	0.44
1:A:255:ALA:HA	1:A:296:TYR:O	2.18	0.43
1:B:84:PHE:O	1:B:106:HIS:HA	2.18	0.43
1:A:53:PRO:HD3	1:A:111:PHE:CE1	2.53	0.43
1:B:229:GLY:HA2	1:B:348:THR:OG1	2.19	0.43
1:A:117:HIS:HD2	3:A:1366:HOH:O	2.02	0.43
1:A:436:MET:HE1	3:A:1269:HOH:O	2.19	0.43
1:A:515:GLU:HG3	1:A:516:THR:HG23	2.01	0.43
1:B:42:ILE:HA	1:B:43:PRO:HD3	1.87	0.43
1:B:163:LYS:HE3	1:B:165:THR:O	2.19	0.43
1:B:457:ASN:C	1:B:457:ASN:HD22	2.19	0.43

Continued on next page...

Continued from previous page...

Atom-1	Atom-2	Interatomic distance (Å)	Clash overlap (Å)
1:B:312:PHE:O	1:B:315:MET:HG2	2.19	0.42
1:B:318:LEU:HD13	1:B:323:GLN:HG2	2.02	0.42
1:A:155:SER:HB2	1:A:520:LEU:HA	1.99	0.42
1:A:174:HIS:H	1:A:174:HIS:HD1	1.66	0.42
1:A:120:ILE:HA	1:A:121:PRO:HD3	1.91	0.42
1:A:250:LEU:HD13	1:A:353:VAL:HG23	2.02	0.42
1:B:178:ASP:OD1	1:B:181:ARG:NH2	2.53	0.42
1:B:182:ARG:O	1:B:186:GLU:HB2	2.19	0.42
1:A:80:VAL:HB	1:A:150:LEU:HD21	2.02	0.42
1:B:45:LEU:N	1:B:326:ASN:HD21	2.13	0.42
1:A:438:ARG:HA	1:A:482:PRO:HA	2.02	0.41
1:B:467:ASN:HD21	1:B:469:SER:HB2	1.84	0.41
1:B:145:LYS:HA	1:B:510:GLN:HG2	2.03	0.41
1:B:328:ILE:HD12	1:B:329:ARG:H	1.85	0.41
1:B:425:ARG:NE	3:B:1308:HOH:O	2.51	0.41
1:A:84:PHE:O	1:A:106:HIS:HA	2.19	0.41
1:A:197:VAL:HG13	1:A:211:VAL:HG13	2.02	0.41
1:B:527:GLN:HE21	1:B:527:GLN:HB3	1.54	0.41
1:B:381:ASN:HA	1:B:382:PRO:HD3	1.97	0.40
1:A:171:PHE:CE1	1:A:176:VAL:HG21	2.56	0.40
1:A:170:HIS:NE2	1:A:273:THR:OG1	2.46	0.40
1:B:271:PRO:HB3	1:B:520:LEU:HD22	2.03	0.40
1:B:305:GLU:O	1:B:309:VAL:HG23	2.21	0.40

There are no symmetry-related clashes.

5.3 Torsion angles [\(i\)](#)

5.3.1 Protein backbone [\(i\)](#)

In the following table, the Percentiles column shows the percent Ramachandran outliers of the chain as a percentile score with respect to all X-ray entries followed by that with respect to entries of similar resolution.

The Analysed column shows the number of residues for which the backbone conformation was analysed, and the total number of residues.

Mol	Chain	Analysed	Favoured	Allowed	Outliers	Percentiles
1	A	526/550 (96%)	510 (97%)	16 (3%)	0	100 100
1	B	526/550 (96%)	509 (97%)	17 (3%)	0	100 100

Continued on next page...

Continued from previous page...

Mol	Chain	Analysed	Favoured	Allowed	Outliers	Percentiles	
All	All	1052/1100 (96%)	1019 (97%)	33 (3%)	0	100	100

There are no Ramachandran outliers to report.

5.3.2 Protein sidechains [i](#)

In the following table, the Percentiles column shows the percent sidechain outliers of the chain as a percentile score with respect to all X-ray entries followed by that with respect to entries of similar resolution.

The Analysed column shows the number of residues for which the sidechain conformation was analysed, and the total number of residues.

Mol	Chain	Analysed	Rotameric	Outliers	Percentiles	
1	A	443/463 (96%)	430 (97%)	13 (3%)	42	44
1	B	443/463 (96%)	426 (96%)	17 (4%)	33	33
All	All	886/926 (96%)	856 (97%)	30 (3%)	37	37

All (30) residues with a non-rotameric sidechain are listed below:

Mol	Chain	Res	Type
1	A	100	LEU
1	A	195	ASP
1	A	233	LEU
1	A	291	ARG
1	A	329	ARG
1	A	376	PRO
1	A	378	LYS
1	A	387	ARG
1	A	393	GLU
1	A	497	GLU
1	A	500	ASP
1	A	526	GLN
1	A	527	GLN
1	B	29	GLN
1	B	41	ASP
1	B	136	VAL
1	B	178	ASP
1	B	217	ARG
1	B	233	LEU
1	B	289	LEU

Continued on next page...

Continued from previous page...

Mol	Chain	Res	Type
1	B	291	ARG
1	B	330	PHE
1	B	376	PRO
1	B	390	ARG
1	B	457	ASN
1	B	497	GLU
1	B	500	ASP
1	B	501	GLU
1	B	511	ARG
1	B	527	GLN

Sometimes sidechains can be flipped to improve hydrogen bonding and reduce clashes. All (25) such sidechains are listed below:

Mol	Chain	Res	Type
1	A	117	HIS
1	A	153	ASN
1	A	199	HIS
1	A	205	ASN
1	A	207	ASN
1	A	252	ASN
1	A	259	GLN
1	A	510	GLN
1	A	526	GLN
1	A	528	HIS
1	B	38	GLN
1	B	124	HIS
1	B	153	ASN
1	B	174	HIS
1	B	205	ASN
1	B	207	ASN
1	B	252	ASN
1	B	267	ASN
1	B	326	ASN
1	B	457	ASN
1	B	464	ASN
1	B	467	ASN
1	B	470	ASN
1	B	494	GLN
1	B	527	GLN

5.3.3 RNA [i](#)

There are no RNA molecules in this entry.

5.4 Non-standard residues in protein, DNA, RNA chains [i](#)

There are no non-standard protein/DNA/RNA residues in this entry.

5.5 Carbohydrates [i](#)

There are no monosaccharides in this entry.

5.6 Ligand geometry [i](#)

2 ligands are modelled in this entry.

In the following table, the Counts columns list the number of bonds (or angles) for which Mogul statistics could be retrieved, the number of bonds (or angles) that are observed in the model and the number of bonds (or angles) that are defined in the Chemical Component Dictionary. The Link column lists molecule types, if any, to which the group is linked. The Z score for a bond length (or angle) is the number of standard deviations the observed value is removed from the expected value. A bond length (or angle) with $|Z| > 2$ is considered an outlier worth inspection. RMSZ is the root-mean-square of all Z scores of the bond lengths (or angles).

Mol	Type	Chain	Res	Link	Bond lengths			Bond angles		
					Counts	RMSZ	# Z > 2	Counts	RMSZ	# Z > 2
2	TRP	B	1000	-	14,16,16	0.87	0	16,22,22	0.85	0
2	TRP	A	1001	-	14,16,16	0.86	0	16,22,22	0.84	0

In the following table, the Chirals column lists the number of chiral outliers, the number of chiral centers analysed, the number of these observed in the model and the number defined in the Chemical Component Dictionary. Similar counts are reported in the Torsion and Rings columns. '-' means no outliers of that kind were identified.

Mol	Type	Chain	Res	Link	Chirals	Torsions	Rings
2	TRP	B	1000	-	-	2/7/8/8	0/2/2/2
2	TRP	A	1001	-	-	2/7/8/8	0/2/2/2

There are no bond length outliers.

There are no bond angle outliers.

There are no chirality outliers.

All (4) torsion outliers are listed below:

Mol	Chain	Res	Type	Atoms
2	B	1000	TRP	OXT-C-CA-N
2	A	1001	TRP	O-C-CA-N
2	B	1000	TRP	O-C-CA-N
2	A	1001	TRP	OXT-C-CA-N

There are no ring outliers.

No monomer is involved in short contacts.

5.7 Other polymers [i](#)

There are no such residues in this entry.

5.8 Polymer linkage issues [i](#)

There are no chain breaks in this entry.

6 Fit of model and data [i](#)

6.1 Protein, DNA and RNA chains [i](#)

In the following table, the column labelled ‘#RSRZ > 2’ contains the number (and percentage) of RSRZ outliers, followed by percent RSRZ outliers for the chain as percentile scores relative to all X-ray entries and entries of similar resolution. The OWAB column contains the minimum, median, 95th percentile and maximum values of the occupancy-weighted average B-factor per residue. The column labelled ‘Q < 0.9’ lists the number of (and percentage) of residues with an average occupancy less than 0.9.

Mol	Chain	Analysed	<RSRZ>	#RSRZ>2	OWAB(Å ²)	Q<0.9
1	A	528/550 (96%)	-0.23	8 (1%) 73 76	18, 28, 45, 68	0
1	B	528/550 (96%)	-0.24	10 (1%) 66 70	18, 30, 49, 71	0
All	All	1056/1100 (96%)	-0.23	18 (1%) 70 73	18, 29, 47, 71	0

All (18) RSRZ outliers are listed below:

Mol	Chain	Res	Type	RSRZ
1	A	528	HIS	4.1
1	A	1	MET	3.5
1	A	527	GLN	2.8
1	B	159	LEU	2.6
1	A	301	ARG	2.6
1	B	501	GLU	2.5
1	B	527	GLN	2.5
1	A	515	GLU	2.4
1	B	2	SER	2.4
1	B	525	ARG	2.4
1	A	425	ARG	2.3
1	A	2	SER	2.2
1	A	525	ARG	2.2
1	B	497	GLU	2.2
1	B	500	ASP	2.2
1	B	42	ILE	2.1
1	B	134	LYS	2.0
1	B	425	ARG	2.0

6.2 Non-standard residues in protein, DNA, RNA chains [i](#)

There are no non-standard protein/DNA/RNA residues in this entry.

6.3 Carbohydrates [i](#)

There are no monosaccharides in this entry.

6.4 Ligands [i](#)

In the following table, the Atoms column lists the number of modelled atoms in the group and the number defined in the chemical component dictionary. The B-factors column lists the minimum, median, 95th percentile and maximum values of B factors of atoms in the group. The column labelled 'Q< 0.9' lists the number of atoms with occupancy less than 0.9.

Mol	Type	Chain	Res	Atoms	RSCC	RSR	B-factors(\AA^2)	Q<0.9
2	TRP	A	1001	15/15	0.97	0.13	26,28,28,29	0
2	TRP	B	1000	15/15	0.97	0.14	26,28,31,31	0

6.5 Other polymers [i](#)

There are no such residues in this entry.