



wwPDB X-ray Structure Validation Summary Report ⓘ

Dec 4, 2023 – 05:04 am GMT

PDB ID : 2CIB
Title : High throughput screening and x-ray crystallography assisted evaluation of small molecule scaffolds for CYP51 inhibitors
Authors : Podust, L.M.; Kim, Y.; Yermalitskaya, L.V.; Von Kries, J.P.; Waterman, M.R.
Deposited on : 2006-03-17
Resolution : 1.50 Å(reported)

This is a wwPDB X-ray Structure Validation Summary Report for a publicly released PDB entry.

We welcome your comments at validation@mail.wwpdb.org

A user guide is available at

<https://www.wwpdb.org/validation/2017/XrayValidationReportHelp>

with specific help available everywhere you see the ⓘ symbol.

The types of validation reports are described at

<http://www.wwpdb.org/validation/2017/FAQs#types>.

The following versions of software and data (see [references ⓘ](#)) were used in the production of this report:

MolProbity : **FAILED**
Mogul : 1.8.4, CSD as541be (2020)
Xtriage (Phenix) : 1.13
EDS : 2.36
buster-report : 1.1.7 (2018)
Percentile statistics : 20191225.v01 (using entries in the PDB archive December 25th 2019)
Refmac : 5.8.0158
CCP4 : 7.0.044 (Gargrove)
Ideal geometry (proteins) : Engh & Huber (2001)
Ideal geometry (DNA, RNA) : Parkinson et al. (1996)
Validation Pipeline (wwPDB-VP) : 2.36

PERCENTILES INFOmissingINFO

1 Entry composition i

There are 4 unique types of molecules in this entry. The entry contains 3803 atoms, of which 0 are hydrogens and 0 are deuteriums.

In the tables below, the ZeroOcc column contains the number of atoms modelled with zero occupancy, the AltConf column contains the number of residues with at least one atom in alternate conformation and the Trace column contains the number of residues modelled with at most 2 atoms.

- Molecule 1 is a protein called CYTOCHROME P450 51.

Mol	Chain	Residues	Atoms					ZeroOcc	AltConf	Trace
			Total	C	N	O	S			
1	A	420	3373	2132	613	611	17	0	5	1

There are 2 discrepancies between the modelled and reference sequences:

Chain	Residue	Modelled	Actual	Comment	Reference
A	37	LEU	CYS	engineered mutation	UNP P0A512
A	442	ALA	CYS	engineered mutation	UNP P0A512

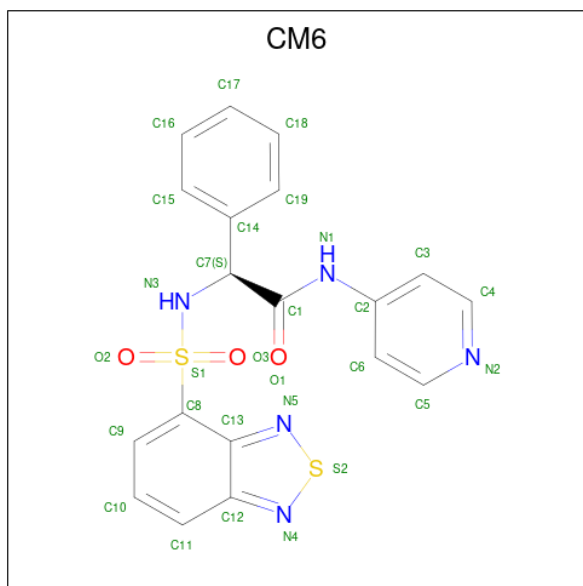
- Molecule 2 is PROTOPORPHYRIN IX CONTAINING FE (three-letter code: HEM) (formula: $C_{34}H_{32}FeN_4O_4$).



Mol	Chain	Residues	Atoms					ZeroOcc	AltConf
			Total	C	Fe	N	O		
2	A	1	43	34	1	4	4	0	0

- Molecule 3 is (2S)-2-[(2,1,3-BENZOTHIADIAZOL-4-YLSULFONYL)AMINO]-2-PHENYL-

N-PYRIDIN-4-YLACETAMIDE (three-letter code: CM6) (formula: C₁₉H₁₅N₅O₃S₂).



Mol	Chain	Residues	Atoms					ZeroOcc	AltConf
			Total	C	N	O	S		
3	A	1	29	19	5	3	2	0	0

- Molecule 4 is water.

Mol	Chain	Residues	Atoms		ZeroOcc	AltConf
			Total	O		
4	A	358	358	358	0	0

SEQUENCE-PLOTS INFOmissingINFO

2 Data and refinement statistics

Property	Value	Source
Space group	P 21 21 21	Depositor
Cell constants a, b, c, α , β , γ	44.94Å 85.89Å 111.01Å 90.00° 90.00° 90.00°	Depositor
Resolution (Å)	33.97 – 1.50 33.97 – 1.50	Depositor EDS
% Data completeness (in resolution range)	93.8 (33.97-1.50) 93.7 (33.97-1.50)	Depositor EDS
R_{merge}	0.06	Depositor
R_{sym}	(Not available)	Depositor
$\langle I/\sigma(I) \rangle$ ¹	2.45 (at 1.50Å)	Xtrriage
Refinement program	CNS 1.1	Depositor
R, R_{free}	0.204 , 0.226 0.199 , (Not available)	Depositor DCC
R_{free} test set	No test flags present.	wwPDB-VP
Wilson B-factor (Å ²)	17.7	Xtrriage
Anisotropy	0.442	Xtrriage
Bulk solvent k_{sol} (e/Å ³), B_{sol} (Å ²)	0.54 , 64.1	EDS
L-test for twinning ²	$\langle L \rangle = 0.49$, $\langle L^2 \rangle = 0.32$	Xtrriage
Estimated twinning fraction	No twinning to report.	Xtrriage
F_o, F_c correlation	0.95	EDS
Total number of atoms	3803	wwPDB-VP
Average B, all atoms (Å ²)	24.0	wwPDB-VP

Xtrriage's analysis on translational NCS is as follows: *The largest off-origin peak in the Patterson function is 5.17% of the height of the origin peak. No significant pseudotranslation is detected.*

¹Intensities estimated from amplitudes.

²Theoretical values of $\langle |L| \rangle$, $\langle L^2 \rangle$ for acentric reflections are 0.5, 0.333 respectively for untwinned datasets, and 0.375, 0.2 for perfectly twinned datasets.

3 Model quality [i](#)

3.1 Standard geometry [i](#)

MolProbity failed to run properly - this section is therefore empty.

3.2 Too-close contacts [i](#)

MolProbity failed to run properly - this section is therefore empty.

3.3 Torsion angles [i](#)

3.3.1 Protein backbone [i](#)

MolProbity failed to run properly - this section is therefore empty.

3.3.2 Protein sidechains [i](#)

MolProbity failed to run properly - this section is therefore empty.

3.3.3 RNA [i](#)

MolProbity failed to run properly - this section is therefore empty.

3.4 Non-standard residues in protein, DNA, RNA chains [i](#)

There are no non-standard protein/DNA/RNA residues in this entry.

3.5 Carbohydrates [i](#)

There are no monosaccharides in this entry.

3.6 Ligand geometry [i](#)

2 ligands are modelled in this entry.

In the following table, the Counts columns list the number of bonds (or angles) for which Mogul statistics could be retrieved, the number of bonds (or angles) that are observed in the model and the number of bonds (or angles) that are defined in the Chemical Component Dictionary. The Link column lists molecule types, if any, to which the group is linked. The Z score for a bond

length (or angle) is the number of standard deviations the observed value is removed from the expected value. A bond length (or angle) with $|Z| > 2$ is considered an outlier worth inspection. RMSZ is the root-mean-square of all Z scores of the bond lengths (or angles).

Mol	Type	Chain	Res	Link	Bond lengths			Bond angles		
					Counts	RMSZ	# Z > 2	Counts	RMSZ	# Z > 2
2	HEM	A	1449	3,1	41,50,50	1.36	8 (19%)	45,82,82	1.12	3 (6%)
3	CM6	A	1450	2	32,32,32	1.74	7 (21%)	36,45,45	1.33	5 (13%)

In the following table, the Chirals column lists the number of chiral outliers, the number of chiral centers analysed, the number of these observed in the model and the number defined in the Chemical Component Dictionary. Similar counts are reported in the Torsion and Rings columns. '-' means no outliers of that kind were identified.

Mol	Type	Chain	Res	Link	Chirals	Torsions	Rings
2	HEM	A	1449	3,1	-	0/12/54/54	-
3	CM6	A	1450	2	-	0/23/23/23	0/4/4/4

The worst 5 of 15 bond length outliers are listed below:

Mol	Chain	Res	Type	Atoms	Z	Observed(Å)	Ideal(Å)
3	A	1450	CM6	S1-N3	4.47	1.69	1.61
2	A	1449	HEM	C3C-CAC	-3.46	1.40	1.47
3	A	1450	CM6	C8-C13	3.30	1.45	1.42
2	A	1449	HEM	CBB-CAB	3.10	1.45	1.30
3	A	1450	CM6	C7-C1	-2.91	1.47	1.54

The worst 5 of 8 bond angle outliers are listed below:

Mol	Chain	Res	Type	Atoms	Z	Observed(°)	Ideal(°)
2	A	1449	HEM	C3B-C2B-C1B	3.63	109.18	106.49
3	A	1450	CM6	C5-N2-C4	3.45	124.96	116.85
2	A	1449	HEM	CBA-CAA-C2A	-3.13	107.28	112.62
3	A	1450	CM6	C9-C8-S1	2.94	120.46	116.98
3	A	1450	CM6	C6-C5-N2	-2.64	119.02	123.62

There are no chirality outliers.

There are no torsion outliers.

There are no ring outliers.

No monomer is involved in short contacts.

3.7 Other polymers [i](#)

There are no such residues in this entry.

3.8 Polymer linkage issues [i](#)

There are no chain breaks in this entry.

4 Fit of model and data [i](#)

4.1 Protein, DNA and RNA chains [i](#)

In the following table, the column labelled ‘#RSRZ> 2’ contains the number (and percentage) of RSRZ outliers, followed by percent RSRZ outliers for the chain as percentile scores relative to all X-ray entries and entries of similar resolution. The OWAB column contains the minimum, median, 95th percentile and maximum values of the occupancy-weighted average B-factor per residue. The column labelled ‘Q< 0.9’ lists the number of (and percentage) of residues with an average occupancy less than 0.9.

Mol	Chain	Analysed	<RSRZ>	#RSRZ>2	OWAB(Å ²)	Q<0.9
1	A	420/455 (92%)	0.39	25 (5%) 21 23	14, 21, 38, 61	1 (0%)

The worst 5 of 25 RSRZ outliers are listed below:

Mol	Chain	Res	Type	RSRZ
1	A	449	THR	6.6
1	A	105	LEU	4.7
1	A	106	ARG	4.3
1	A	107	GLY	4.2
1	A	108	GLU	3.9

4.2 Non-standard residues in protein, DNA, RNA chains [i](#)

There are no non-standard protein/DNA/RNA residues in this entry.

4.3 Carbohydrates [i](#)

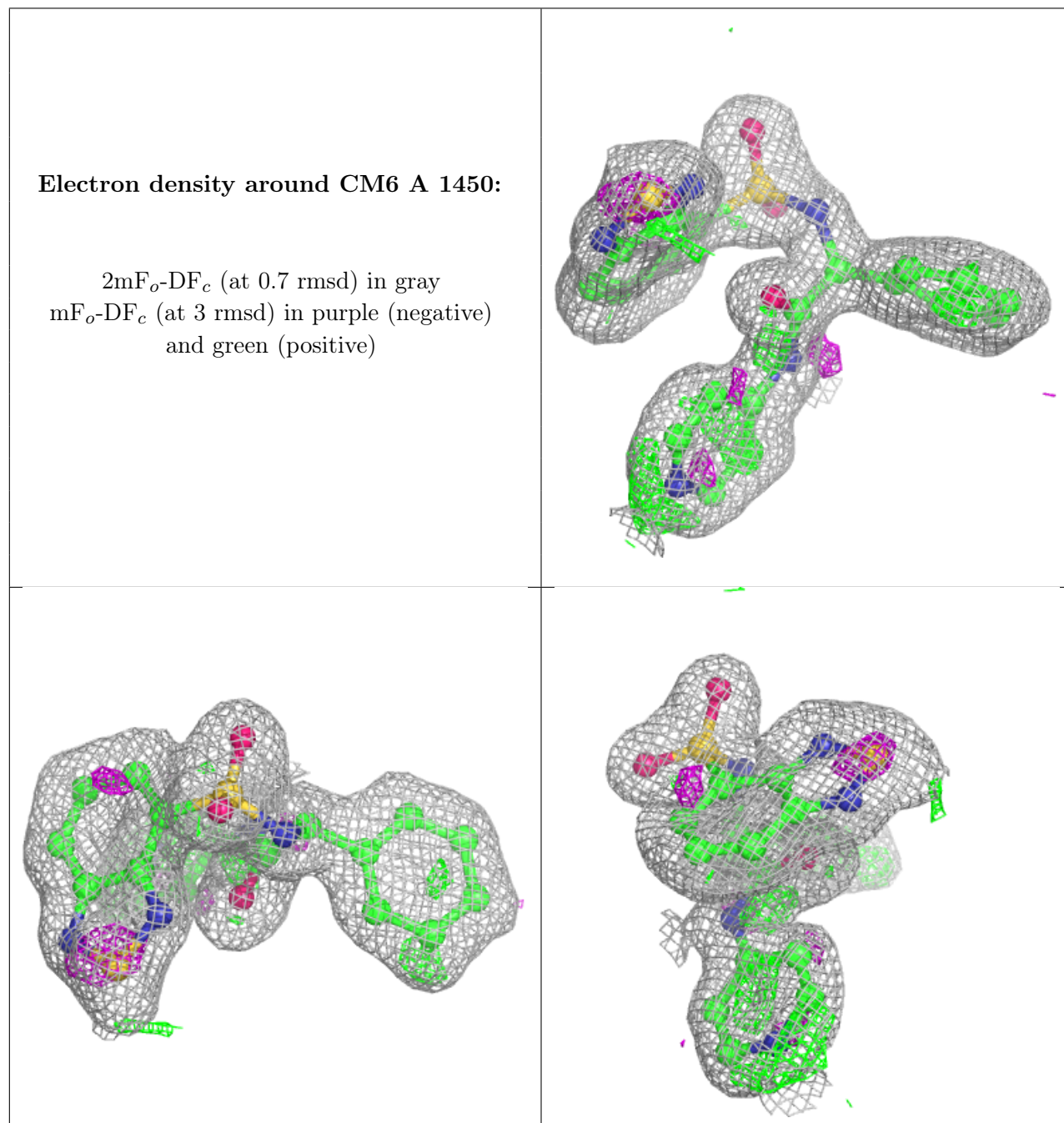
There are no monosaccharides in this entry.

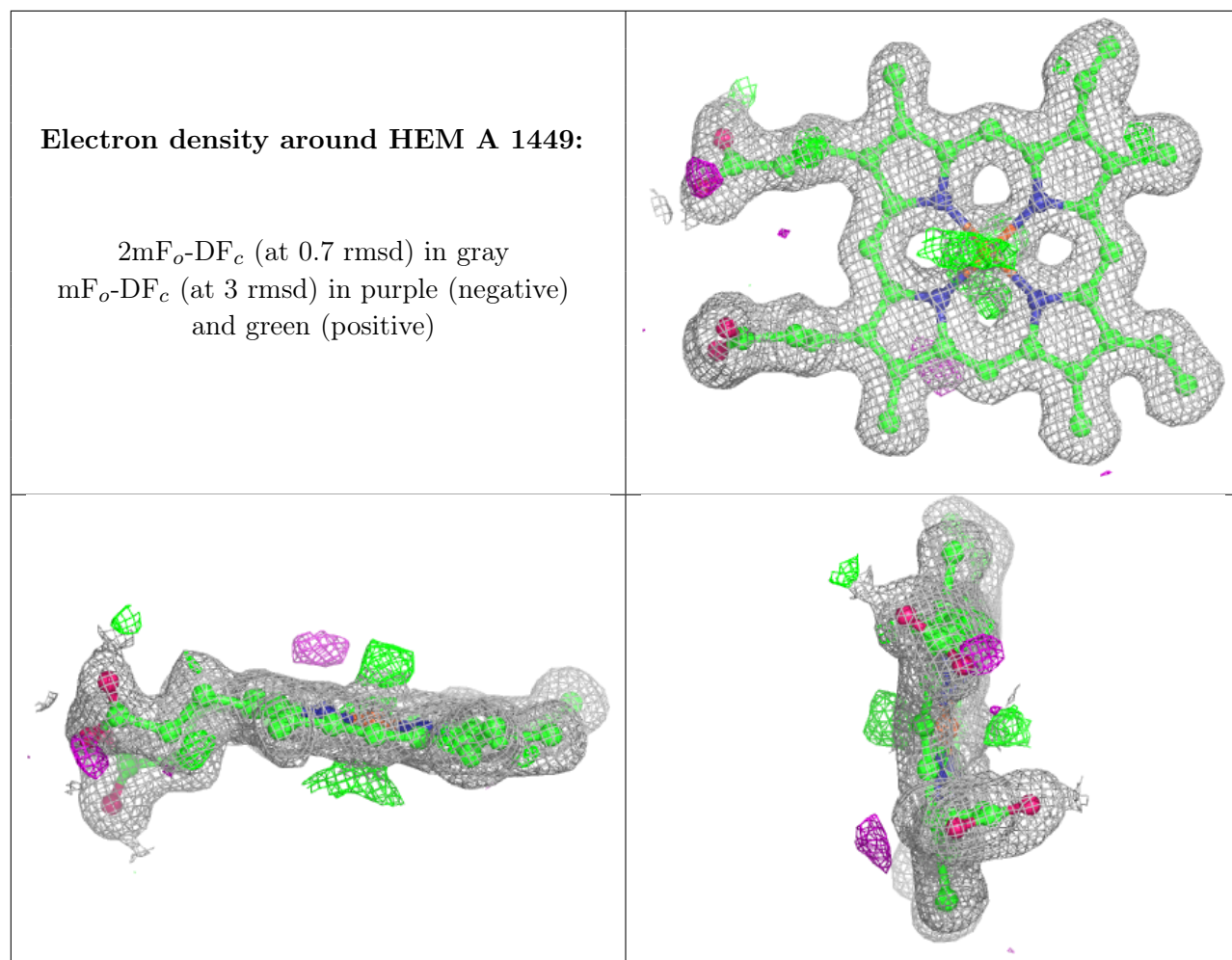
4.4 Ligands [i](#)

In the following table, the Atoms column lists the number of modelled atoms in the group and the number defined in the chemical component dictionary. The B-factors column lists the minimum, median, 95th percentile and maximum values of B factors of atoms in the group. The column labelled ‘Q< 0.9’ lists the number of atoms with occupancy less than 0.9.

Mol	Type	Chain	Res	Atoms	RSCC	RSR	B-factors(Å ²)	Q<0.9
3	CM6	A	1450	29/29	0.88	0.14	17,20,29,33	0
2	HEM	A	1449	43/43	0.96	0.11	14,17,28,34	0

The following is a graphical depiction of the model fit to experimental electron density of all instances of the Ligand of Interest. In addition, ligands with molecular weight > 250 and outliers as shown on the geometry validation Tables will also be included. Each fit is shown from different orientation to approximate a three-dimensional view.





4.5 Other polymers [i](#)

There are no such residues in this entry.