



wwPDB X-ray Structure Validation Summary Report ⓘ

Aug 16, 2023 – 02:29 PM EDT

PDB ID : 2AMF
Title : Crystal structure of 1-Pyrroline-5-Carboxylate Reductase from Human Pathogen Streptococcus Pyogenes
Authors : Nocek, B.; Lezondra, L.; Holzle, D.; Joachimiak, A.; Midwest Center for Structural Genomics (MCSG)
Deposited on : 2005-08-09
Resolution : 2.20 Å(reported)

This is a wwPDB X-ray Structure Validation Summary Report for a publicly released PDB entry.

We welcome your comments at validation@mail.wwpdb.org

A user guide is available at

<https://www.wwpdb.org/validation/2017/XrayValidationReportHelp>

with specific help available everywhere you see the ⓘ symbol.

The types of validation reports are described at

<http://www.wwpdb.org/validation/2017/FAQs#types>.

The following versions of software and data (see [references ⓘ](#)) were used in the production of this report:

MolProbity : 4.02b-467
Mogul : 1.8.5 (274361), CSD as541be (2020)
Xtriage (Phenix) : 1.13
EDS : 2.35
Percentile statistics : 20191225.v01 (using entries in the PDB archive December 25th 2019)
Refmac : 5.8.0158
CCP4 : 7.0.044 (Gargrove)
Ideal geometry (proteins) : Engh & Huber (2001)
Ideal geometry (DNA, RNA) : Parkinson et al. (1996)
Validation Pipeline (wwPDB-VP) : 2.35

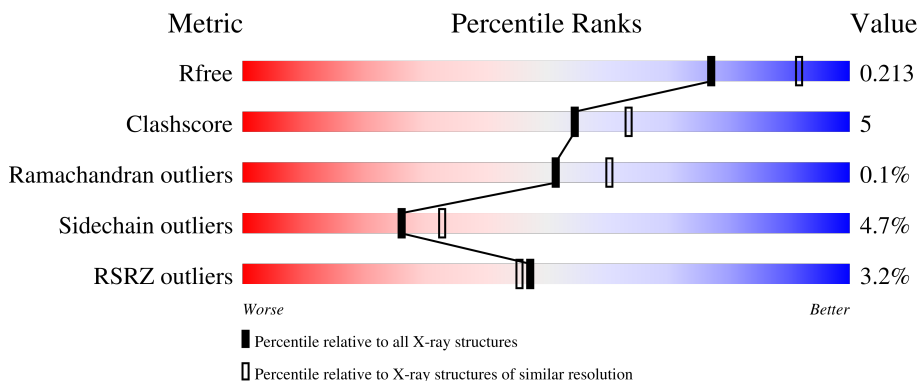
1 Overall quality at a glance

The following experimental techniques were used to determine the structure:

X-RAY DIFFRACTION

The reported resolution of this entry is 2.20 Å.

Percentile scores (ranging between 0-100) for global validation metrics of the entry are shown in the following graphic. The table shows the number of entries on which the scores are based.



Metric	Whole archive (#Entries)	Similar resolution (#Entries, resolution range(Å))
R_{free}	130704	4898 (2.20-2.20)
Clashscore	141614	5594 (2.20-2.20)
Ramachandran outliers	138981	5503 (2.20-2.20)
Sidechain outliers	138945	5504 (2.20-2.20)
RSRZ outliers	127900	4800 (2.20-2.20)

The table below summarises the geometric issues observed across the polymeric chains and their fit to the electron density. The red, orange, yellow and green segments of the lower bar indicate the fraction of residues that contain outliers for ≥ 3 , 2, 1 and 0 types of geometric quality criteria respectively. A grey segment represents the fraction of residues that are not modelled. The numeric value for each fraction is indicated below the corresponding segment, with a dot representing fractions $\leq 5\%$. The upper red bar (where present) indicates the fraction of residues that have poor fit to the electron density. The numeric value is given above the bar.

Mol	Chain	Length	Quality of chain
1	A	259	 88% 10% ..
1	B	259	 2% 91% 7% ..
1	C	259	 8% 85% 12% ..
1	D	259	 2% 86% 12% .
1	E	259	 3% 86% 12% .

The following table lists non-polymeric compounds, carbohydrate monomers and non-standard residues in protein, DNA, RNA chains that are outliers for geometric or electron-density-fit criteria:

Mol	Type	Chain	Res	Chirality	Geometry	Clashes	Electron density
3	PRO	A	4243	-	-	X	-
3	PRO	B	4242	-	-	X	-
3	PRO	B	4332	-	-	X	-
3	PRO	C	4241	-	-	X	-
3	PRO	D	4240	-	-	X	-
3	PRO	E	4244	-	-	X	-
3	PRO	E	4334	-	-	X	-

2 Entry composition

There are 4 unique types of molecules in this entry. The entry contains 10448 atoms, of which 0 are hydrogens and 0 are deuteriums.

In the tables below, the ZeroOcc column contains the number of atoms modelled with zero occupancy, the AltConf column contains the number of residues with at least one atom in alternate conformation and the Trace column contains the number of residues modelled with at most 2 atoms.

- Molecule 1 is a protein called 1-Pyrroline-5-Carboxylate reductase.

Mol	Chain	Residues	Atoms					ZeroOcc	AltConf	Trace
			Total	C	N	O	S			
1	A	257	Total 1926	C 1227	N 319	O 372	S 8	5	1	0
1	B	257	Total 1921	C 1224	N 319	O 370	S 8	0	0	0
1	C	256	Total 1916	C 1221	N 318	O 369	S 8	0	0	0
1	D	258	Total 1926	C 1227	N 320	O 371	S 8	0	0	0
1	E	259	Total 1935	C 1231	N 322	O 374	S 8	0	0	0

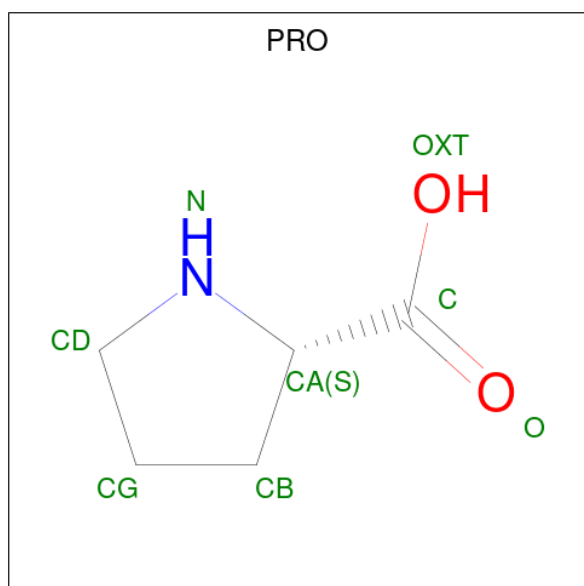
There are 15 discrepancies between the modelled and reference sequences:

Chain	Residue	Modelled	Actual	Comment	Reference
A	-2	SER	-	cloning artifact	GB 13621418
A	-1	ASN	-	cloning artifact	GB 13621418
A	0	ALA	-	cloning artifact	GB 13621418
B	-2	SER	-	cloning artifact	GB 13621418
B	-1	ASN	-	cloning artifact	GB 13621418
B	0	ALA	-	cloning artifact	GB 13621418
C	-2	SER	-	cloning artifact	GB 13621418
C	-1	ASN	-	cloning artifact	GB 13621418
C	0	ALA	-	cloning artifact	GB 13621418
D	-2	SER	-	cloning artifact	GB 13621418
D	-1	ASN	-	cloning artifact	GB 13621418
D	0	ALA	-	cloning artifact	GB 13621418
E	-2	SER	-	cloning artifact	GB 13621418
E	-1	ASN	-	cloning artifact	GB 13621418
E	0	ALA	-	cloning artifact	GB 13621418

- Molecule 2 is SODIUM ION (three-letter code: NA) (formula: Na).

Mol	Chain	Residues	Atoms	ZeroOcc	AltConf
2	A	1	Total Na 1 1	0	0
2	B	1	Total Na 1 1	0	0
2	C	1	Total Na 1 1	0	0
2	D	1	Total Na 1 1	0	0
2	E	1	Total Na 1 1	0	0

- Molecule 3 is PROLINE (three-letter code: PRO) (formula: C₅H₉NO₂).



Mol	Chain	Residues	Atoms	ZeroOcc	AltConf
3	A	1	Total C N O 8 5 1 2	0	0
3	A	1	Total C N O 8 5 1 2	0	0
3	B	1	Total C N O 8 5 1 2	0	0
3	B	1	Total C N O 8 5 1 2	0	0
3	C	1	Total C N O 8 5 1 2	0	0
3	C	1	Total C N O 8 5 1 2	0	0
3	D	1	Total C N O 8 5 1 2	0	0

Continued on next page...

Continued from previous page...

Mol	Chain	Residues	Atoms				ZeroOcc	AltConf
3	D	1	Total	C	N	O	0	0
			8	5	1	2		
3	E	1	Total	C	N	O	0	0
			8	5	1	2		
3	E	1	Total	C	N	O	0	0
			8	5	1	2		

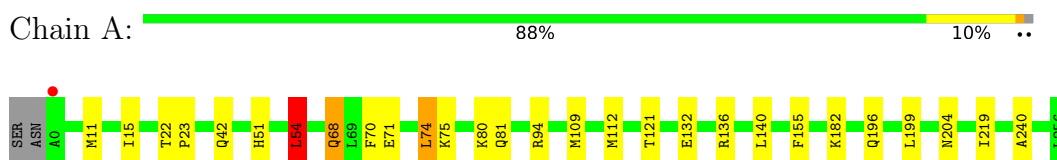
- Molecule 4 is water.

Mol	Chain	Residues	Atoms		ZeroOcc	AltConf
4	A	162	Total	O	0	0
			162	162		
4	B	133	Total	O	0	0
			133	133		
4	C	113	Total	O	0	0
			113	113		
4	D	158	Total	O	0	0
			158	158		
4	E	173	Total	O	0	0
			173	173		

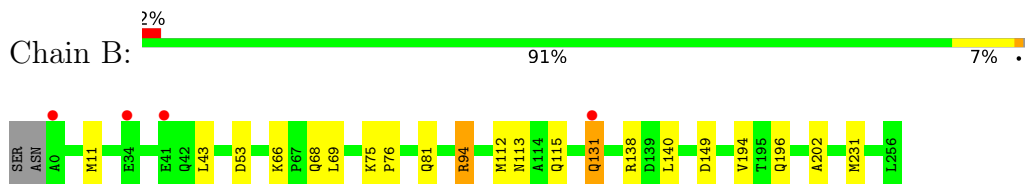
3 Residue-property plots

These plots are drawn for all protein, RNA, DNA and oligosaccharide chains in the entry. The first graphic for a chain summarises the proportions of the various outlier classes displayed in the second graphic. The second graphic shows the sequence view annotated by issues in geometry and electron density. Residues are color-coded according to the number of geometric quality criteria for which they contain at least one outlier: green = 0, yellow = 1, orange = 2 and red = 3 or more. A red dot above a residue indicates a poor fit to the electron density ($RSRZ > 2$). Stretches of 2 or more consecutive residues without any outlier are shown as a green connector. Residues present in the sample, but not in the model, are shown in grey.

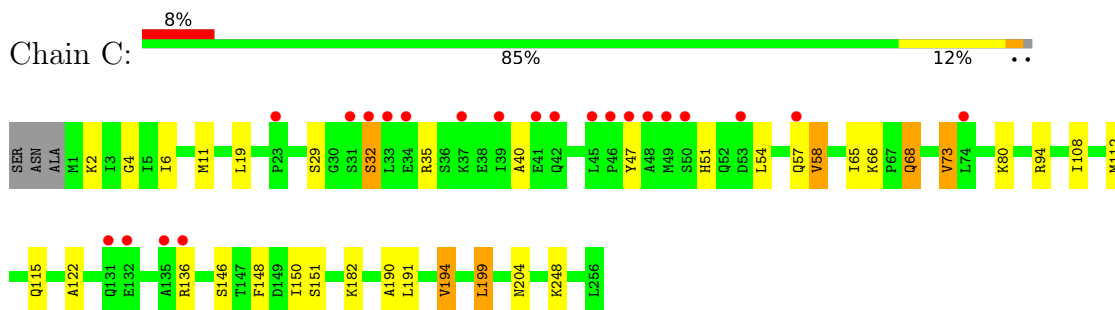
- Molecule 1: 1-Pyrroline-5-Carboxylate reductase



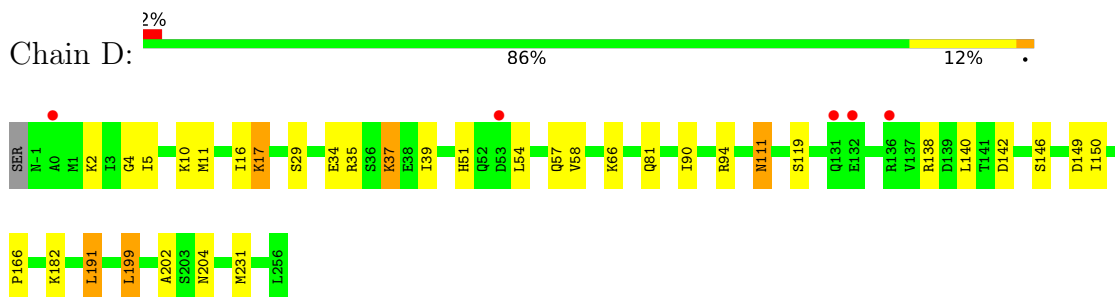
- Molecule 1: 1-Pyrroline-5-Carboxylate reductase



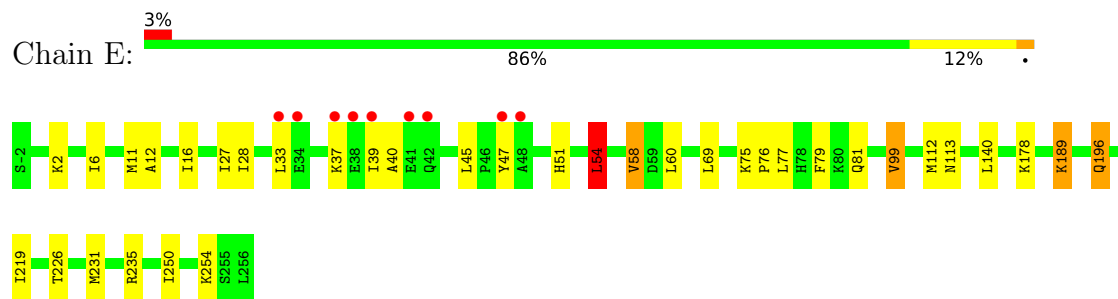
- Molecule 1: 1-Pyrroline-5-Carboxylate reductase



- Molecule 1: 1-Pyrroline-5-Carboxylate reductase



- Molecule 1: 1-Pyrroline-5-Carboxylate reductase



4 Data and refinement statistics

Property	Value	Source
Space group	C 1 2 1	Depositor
Cell constants a, b, c, α , β , γ	171.82Å 109.96Å 84.16Å 90.00° 95.38° 90.00°	Depositor
Resolution (Å)	50.00 – 2.20 33.68 – 2.20	Depositor EDS
% Data completeness (in resolution range)	99.2 (50.00-2.20) 99.2 (33.68-2.20)	Depositor EDS
R_{merge}	0.06	Depositor
R_{sym}	(Not available)	Depositor
$\langle I/\sigma(I) \rangle$ ¹	2.88 (at 2.20Å)	Xtrriage
Refinement program	REFMAC 5.2.0005	Depositor
R, R_{free}	0.173 , 0.215 0.172 , 0.213	Depositor DCC
R_{free} test set	3930 reflections (5.02%)	wwPDB-VP
Wilson B-factor (Å ²)	31.5	Xtrriage
Anisotropy	0.417	Xtrriage
Bulk solvent k_{sol} (e/Å ³), B_{sol} (Å ²)	0.36 , 43.5	EDS
L-test for twinning ²	$\langle L \rangle = 0.49$, $\langle L^2 \rangle = 0.33$	Xtrriage
Estimated twinning fraction	No twinning to report.	Xtrriage
F_o, F_c correlation	0.96	EDS
Total number of atoms	10448	wwPDB-VP
Average B, all atoms (Å ²)	35.0	wwPDB-VP

Xtrriage's analysis on translational NCS is as follows: *The largest off-origin peak in the Patterson function is 7.83% of the height of the origin peak. No significant pseudotranslation is detected.*

¹Intensities estimated from amplitudes.

²Theoretical values of $\langle |L| \rangle$, $\langle L^2 \rangle$ for acentric reflections are 0.5, 0.333 respectively for untwinned datasets, and 0.375, 0.2 for perfectly twinned datasets.

5 Model quality [i](#)

5.1 Standard geometry [i](#)

Bond lengths and bond angles in the following residue types are not validated in this section: NA

The Z score for a bond length (or angle) is the number of standard deviations the observed value is removed from the expected value. A bond length (or angle) with $|Z| > 5$ is considered an outlier worth inspection. RMSZ is the root-mean-square of all Z scores of the bond lengths (or angles).

Mol	Chain	Bond lengths		Bond angles	
		RMSZ	# Z >5	RMSZ	# Z >5
1	A	0.56	0/1955	0.67	1/2644 (0.0%)
1	B	0.55	0/1947	0.61	0/2633
1	C	0.52	0/1942	0.63	1/2626 (0.0%)
1	D	0.56	0/1952	0.62	2/2640 (0.1%)
1	E	0.56	0/1961	0.65	2/2652 (0.1%)
All	All	0.55	0/9757	0.63	6/13195 (0.0%)

There are no bond length outliers.

The worst 5 of 6 bond angle outliers are listed below:

Mol	Chain	Res	Type	Atoms	Z	Observed($^{\circ}$)	Ideal($^{\circ}$)
1	E	112	MET	CG-SD-CE	6.99	111.39	100.20
1	A	54	LEU	CA-CB-CG	6.76	130.84	115.30
1	E	54	LEU	CA-CB-CG	6.54	130.33	115.30
1	C	54	LEU	CA-CB-CG	6.17	129.49	115.30
1	D	199	LEU	CA-CB-CG	5.24	127.35	115.30

There are no chirality outliers.

There are no planarity outliers.

5.2 Too-close contacts [i](#)

In the following table, the Non-H and H(model) columns list the number of non-hydrogen atoms and hydrogen atoms in the chain respectively. The H(added) column lists the number of hydrogen atoms added and optimized by MolProbity. The Clashes column lists the number of clashes within the asymmetric unit, whereas Symm-Clashes lists symmetry-related clashes.

Mol	Chain	Non-H	H(model)	H(added)	Clashes	Symm-Clashes
1	A	1926	0	2018	19	0

Continued on next page...

Continued from previous page...

Mol	Chain	Non-H	H(model)	H(added)	Clashes	Symm-Clashes
1	B	1921	0	2014	12	0
1	C	1916	0	2009	26	0
1	D	1926	0	2016	22	0
1	E	1935	0	2025	19	0
2	A	1	0	0	0	0
2	B	1	0	0	0	0
2	C	1	0	0	0	0
2	D	1	0	0	0	0
2	E	1	0	0	0	0
3	A	16	0	14	4	0
3	B	16	0	14	8	0
3	C	16	0	14	4	0
3	D	16	0	14	5	0
3	E	16	0	14	6	0
4	A	162	0	0	2	0
4	B	133	0	0	4	0
4	C	113	0	0	1	0
4	D	158	0	0	1	0
4	E	173	0	0	4	0
All	All	10448	0	10152	104	0

The all-atom clashscore is defined as the number of clashes found per 1000 atoms (including hydrogen atoms). The all-atom clashscore for this structure is 5.

The worst 5 of 104 close contacts within the same asymmetric unit are listed below, sorted by their clash magnitude.

Atom-1	Atom-2	Interatomic distance (Å)	Clash overlap (Å)
3:E:4244:PRO:OXT	4:E:4426:HOH:O	1.80	0.98
3:B:4242:PRO:HA	3:B:4332:PRO:N	1.82	0.94
3:E:4244:PRO:HA	3:E:4334:PRO:N	1.81	0.94
3:C:4241:PRO:HA	3:C:4331:PRO:N	1.92	0.84
3:E:4244:PRO:HA	3:E:4334:PRO:CD	2.11	0.81

There are no symmetry-related clashes.

5.3 Torsion angles [i](#)

5.3.1 Protein backbone [i](#)

In the following table, the Percentiles column shows the percent Ramachandran outliers of the chain as a percentile score with respect to all X-ray entries followed by that with respect to entries of similar resolution.

The Analysed column shows the number of residues for which the backbone conformation was analysed, and the total number of residues.

Mol	Chain	Analysed	Favoured	Allowed	Outliers	Percentiles	
1	A	256/259 (99%)	253 (99%)	3 (1%)	0	100	100
1	B	255/259 (98%)	249 (98%)	5 (2%)	1 (0%)	34	37
1	C	254/259 (98%)	244 (96%)	10 (4%)	0	100	100
1	D	256/259 (99%)	252 (98%)	4 (2%)	0	100	100
1	E	257/259 (99%)	252 (98%)	5 (2%)	0	100	100
All	All	1278/1295 (99%)	1250 (98%)	27 (2%)	1 (0%)	51	60

All (1) Ramachandran outliers are listed below:

Mol	Chain	Res	Type
1	B	131	GLN

5.3.2 Protein sidechains [i](#)

In the following table, the Percentiles column shows the percent sidechain outliers of the chain as a percentile score with respect to all X-ray entries followed by that with respect to entries of similar resolution.

The Analysed column shows the number of residues for which the sidechain conformation was analysed, and the total number of residues.

Mol	Chain	Analysed	Rotameric	Outliers	Percentiles	
1	A	213/214 (100%)	204 (96%)	9 (4%)	30	38
1	B	212/214 (99%)	204 (96%)	8 (4%)	33	42
1	C	212/214 (99%)	200 (94%)	12 (6%)	20	24
1	D	212/214 (99%)	201 (95%)	11 (5%)	23	28
1	E	214/214 (100%)	204 (95%)	10 (5%)	26	33
All	All	1063/1070 (99%)	1013 (95%)	50 (5%)	26	33

5 of 50 residues with a non-rotameric sidechain are listed below:

Mol	Chain	Res	Type
1	C	204	ASN
1	D	111	ASN
1	E	196	GLN
1	D	10	LYS
1	D	58	VAL

Sometimes sidechains can be flipped to improve hydrogen bonding and reduce clashes. 5 of 24 such sidechains are listed below:

Mol	Chain	Res	Type
1	C	204	ASN
1	D	57	GLN
1	D	51	HIS
1	D	111	ASN
1	B	134	GLN

5.3.3 RNA [i](#)

There are no RNA molecules in this entry.

5.4 Non-standard residues in protein, DNA, RNA chains [i](#)

There are no non-standard protein/DNA/RNA residues in this entry.

5.5 Carbohydrates [i](#)

There are no monosaccharides in this entry.

5.6 Ligand geometry [i](#)

Of 15 ligands modelled in this entry, 5 are monoatomic - leaving 10 for Mogul analysis.

In the following table, the Counts columns list the number of bonds (or angles) for which Mogul statistics could be retrieved, the number of bonds (or angles) that are observed in the model and the number of bonds (or angles) that are defined in the Chemical Component Dictionary. The Link column lists molecule types, if any, to which the group is linked. The Z score for a bond length (or angle) is the number of standard deviations the observed value is removed from the expected value. A bond length (or angle) with $|Z| > 2$ is considered an outlier worth inspection. RMSZ is the root-mean-square of all Z scores of the bond lengths (or angles).

Mol	Type	Chain	Res	Link	Bond lengths			Bond angles		
					Counts	RMSZ	# Z > 2	Counts	RMSZ	# Z > 2
3	PRO	D	4330	-	8,8,8	0.81	0	10,10,10	1.29	2 (20%)
3	PRO	A	4243	-	8,8,8	1.07	0	10,10,10	1.75	3 (30%)
3	PRO	E	4334	-	8,8,8	0.89	1 (12%)	10,10,10	1.11	0
3	PRO	B	4332	-	8,8,8	0.64	0	10,10,10	1.32	2 (20%)
3	PRO	C	4241	-	8,8,8	1.18	1 (12%)	10,10,10	1.72	2 (20%)
3	PRO	B	4242	-	8,8,8	1.00	0	10,10,10	1.60	3 (30%)
3	PRO	A	4333	-	8,8,8	0.72	0	10,10,10	1.23	2 (20%)
3	PRO	E	4244	-	8,8,8	1.04	1 (12%)	10,10,10	1.81	3 (30%)
3	PRO	C	4331	-	8,8,8	0.67	0	10,10,10	1.17	1 (10%)
3	PRO	D	4240	-	8,8,8	1.06	1 (12%)	10,10,10	1.48	2 (20%)

In the following table, the Chirals column lists the number of chiral outliers, the number of chiral centers analysed, the number of these observed in the model and the number defined in the Chemical Component Dictionary. Similar counts are reported in the Torsion and Rings columns. '-' means no outliers of that kind were identified.

Mol	Type	Chain	Res	Link	Chirals	Torsions	Rings
3	PRO	D	4330	-	-	1/4/11/11	0/1/1/1
3	PRO	A	4243	-	-	3/4/11/11	0/1/1/1
3	PRO	E	4334	-	-	0/4/11/11	0/1/1/1
3	PRO	B	4332	-	-	2/4/11/11	0/1/1/1
3	PRO	C	4241	-	-	4/4/11/11	0/1/1/1
3	PRO	B	4242	-	-	3/4/11/11	0/1/1/1
3	PRO	A	4333	-	-	0/4/11/11	0/1/1/1
3	PRO	E	4244	-	-	4/4/11/11	0/1/1/1
3	PRO	C	4331	-	-	1/4/11/11	0/1/1/1
3	PRO	D	4240	-	-	4/4/11/11	0/1/1/1

All (4) bond length outliers are listed below:

Mol	Chain	Res	Type	Atoms	Z	Observed(Å)	Ideal(Å)
3	D	4240	PRO	OXT-C	-2.33	1.22	1.30
3	C	4241	PRO	OXT-C	-2.25	1.23	1.30
3	E	4334	PRO	OXT-C	-2.14	1.23	1.30
3	E	4244	PRO	OXT-C	-2.12	1.23	1.30

The worst 5 of 20 bond angle outliers are listed below:

Mol	Chain	Res	Type	Atoms	Z	Observed($^{\circ}$)	Ideal($^{\circ}$)
3	E	4244	PRO	OXT-C-O	-3.71	115.65	124.09
3	C	4241	PRO	OXT-C-O	-3.60	115.92	124.09
3	E	4244	PRO	C-CA-N	3.14	119.13	106.73
3	A	4243	PRO	OXT-C-O	-3.08	117.09	124.09
3	D	4240	PRO	OXT-C-O	-2.94	117.42	124.09

There are no chirality outliers.

5 of 22 torsion outliers are listed below:

Mol	Chain	Res	Type	Atoms
3	C	4241	PRO	O-C-CA-CB
3	C	4241	PRO	OXT-C-CA-CB
3	E	4244	PRO	O-C-CA-N
3	E	4244	PRO	OXT-C-CA-N
3	E	4244	PRO	O-C-CA-CB

There are no ring outliers.

10 monomers are involved in 27 short contacts:

Mol	Chain	Res	Type	Clashes	Symm-Clashes
3	D	4330	PRO	2	0
3	A	4243	PRO	4	0
3	E	4334	PRO	4	0
3	B	4332	PRO	4	0
3	C	4241	PRO	4	0
3	B	4242	PRO	8	0
3	A	4333	PRO	3	0
3	E	4244	PRO	6	0
3	C	4331	PRO	3	0
3	D	4240	PRO	5	0

5.7 Other polymers [i](#)

There are no such residues in this entry.

5.8 Polymer linkage issues [i](#)

There are no chain breaks in this entry.

6 Fit of model and data [i](#)

6.1 Protein, DNA and RNA chains [i](#)

In the following table, the column labelled ‘#RSRZ > 2’ contains the number (and percentage) of RSRZ outliers, followed by percent RSRZ outliers for the chain as percentile scores relative to all X-ray entries and entries of similar resolution. The OWAB column contains the minimum, median, 95th percentile and maximum values of the occupancy-weighted average B-factor per residue. The column labelled ‘Q < 0.9’ lists the number of (and percentage) of residues with an average occupancy less than 0.9.

Mol	Chain	Analysed	<RSRZ>	#RSRZ>2	OWAB(Å ²)	Q<0.9
1	A	257/259 (99%)	-0.21	1 (0%) 92 91	22, 33, 51, 58	1 (0%)
1	B	257/259 (99%)	-0.20	4 (1%) 72 70	22, 33, 51, 58	1 (0%)
1	C	256/259 (98%)	0.26	22 (8%) 10 9	22, 33, 51, 59	0
1	D	258/259 (99%)	-0.16	5 (1%) 66 65	22, 33, 53, 59	2 (0%)
1	E	259/259 (100%)	-0.08	9 (3%) 44 42	22, 33, 51, 59	2 (0%)
All	All	1287/1295 (99%)	-0.08	41 (3%) 47 45	22, 33, 52, 59	6 (0%)

The worst 5 of 41 RSRZ outliers are listed below:

Mol	Chain	Res	Type	RSRZ
1	C	33	LEU	7.9
1	C	47	TYR	4.9
1	C	42	GLN	4.7
1	E	47	TYR	3.9
1	C	37	LYS	3.7

6.2 Non-standard residues in protein, DNA, RNA chains [i](#)

There are no non-standard protein/DNA/RNA residues in this entry.

6.3 Carbohydrates [i](#)

There are no monosaccharides in this entry.

6.4 Ligands [i](#)

In the following table, the Atoms column lists the number of modelled atoms in the group and the number defined in the chemical component dictionary. The B-factors column lists the minimum,

median, 95th percentile and maximum values of B factors of atoms in the group. The column labelled 'Q< 0.9' lists the number of atoms with occupancy less than 0.9.

Mol	Type	Chain	Res	Atoms	RSCC	RSR	B-factors(\AA^2)	Q<0.9
3	PRO	B	4242	8/8	0.62	0.34	64,65,65,65	0
3	PRO	D	4240	8/8	0.65	0.32	55,55,56,56	0
3	PRO	A	4243	8/8	0.74	0.26	55,56,56,56	0
3	PRO	E	4244	8/8	0.78	0.26	51,52,52,53	0
3	PRO	C	4241	8/8	0.84	0.23	51,51,52,52	0
2	NA	C	852	1/1	0.94	0.15	38,38,38,38	0
3	PRO	A	4333	8/8	0.96	0.12	34,35,35,35	0
2	NA	A	850	1/1	0.96	0.12	33,33,33,33	0
3	PRO	B	4332	8/8	0.96	0.11	32,32,33,33	0
2	NA	D	853	1/1	0.97	0.17	33,33,33,33	0
3	PRO	D	4330	8/8	0.97	0.08	26,28,28,28	0
3	PRO	C	4331	8/8	0.97	0.08	31,31,32,32	0
3	PRO	E	4334	8/8	0.97	0.09	26,26,27,27	0
2	NA	E	854	1/1	0.98	0.10	32,32,32,32	0
2	NA	B	851	1/1	0.99	0.11	35,35,35,35	0

6.5 Other polymers [\(i\)](#)

There are no such residues in this entry.