



# Full wwPDB X-ray Structure Validation Report ⓘ

May 27, 2020 – 06:39 pm BST

PDB ID : 1XE6  
Title : Structure of plasmepsin II in complex of an pepstatin analogue  
Authors : Prade, L.  
Deposited on : 2004-09-09  
Resolution : 2.80 Å(reported)

This is a Full wwPDB X-ray Structure Validation Report for a publicly released PDB entry.

We welcome your comments at [validation@mail.wwpdb.org](mailto:validation@mail.wwpdb.org)

A user guide is available at

<https://www.wwpdb.org/validation/2017/XrayValidationReportHelp>

with specific help available everywhere you see the ⓘ symbol.

---

The following versions of software and data (see [references ⓘ](#)) were used in the production of this report:

MolProbity : 4.02b-467  
Mogul : 1.8.5 (274361), CSD as541be (2020)  
Xtriage (Phenix) : 1.13  
EDS : 2.11  
buster-report : 1.1.7 (2018)  
Percentile statistics : 20191225.v01 (using entries in the PDB archive December 25th 2019)  
Refmac : 5.8.0158  
CCP4 : 7.0.044 (Gargrove)  
Ideal geometry (proteins) : Engh & Huber (2001)  
Ideal geometry (DNA, RNA) : Parkinson et al. (1996)  
Validation Pipeline (wwPDB-VP) : 2.11

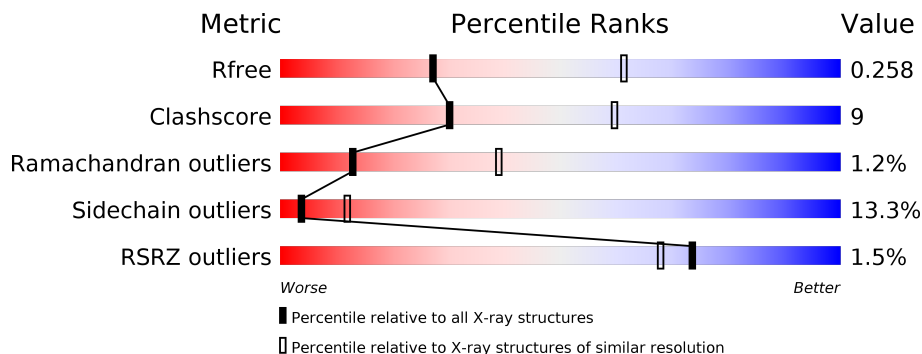
# 1 Overall quality at a glance

The following experimental techniques were used to determine the structure:

*X-RAY DIFFRACTION*

The reported resolution of this entry is 2.80 Å.

Percentile scores (ranging between 0-100) for global validation metrics of the entry are shown in the following graphic. The table shows the number of entries on which the scores are based.



Metric	Whole archive (#Entries)	Similar resolution (#Entries, resolution range(Å))
$R_{free}$	130704	3140 (2.80-2.80)
Clashscore	141614	3569 (2.80-2.80)
Ramachandran outliers	138981	3498 (2.80-2.80)
Sidechain outliers	138945	3500 (2.80-2.80)
RSRZ outliers	127900	3078 (2.80-2.80)

The table below summarises the geometric issues observed across the polymeric chains and their fit to the electron density. The red, orange, yellow and green segments on the lower bar indicate the fraction of residues that contain outliers for  $\geq 3$ , 2, 1 and 0 types of geometric quality criteria respectively. A grey segment represents the fraction of residues that are not modelled. The numeric value for each fraction is indicated below the corresponding segment, with a dot representing fractions  $\leq 5\%$ . The upper red bar (where present) indicates the fraction of residues that have poor fit to the electron density. The numeric value is given above the bar.

Mol	Chain	Length	Quality of chain
1	A	329	 0% 67% 30% •
1	B	329	 2% 67% 27% 5% •

## 2 Entry composition i

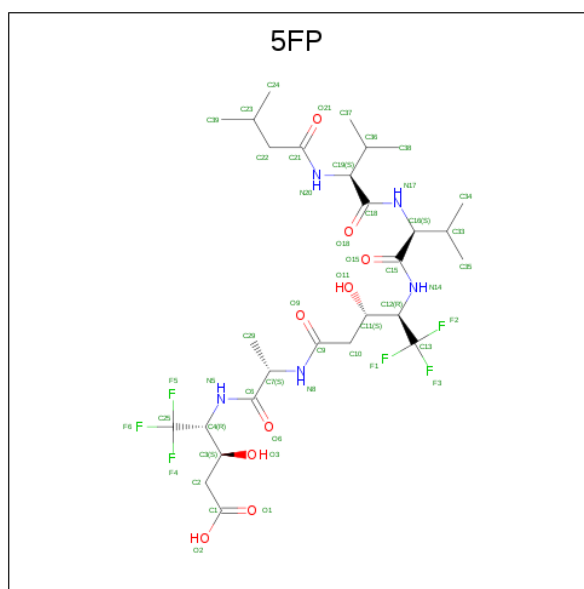
There are 3 unique types of molecules in this entry. The entry contains 5347 atoms, of which 0 are hydrogens and 0 are deuteriums.

In the tables below, the ZeroOcc column contains the number of atoms modelled with zero occupancy, the AltConf column contains the number of residues with at least one atom in alternate conformation and the Trace column contains the number of residues modelled with at most 2 atoms.

- Molecule 1 is a protein called Plasmepsin 2.

Mol	Chain	Residues	Atoms					ZeroOcc	AltConf	Trace
			Total	C	N	O	S			
1	A	329	Total 2607	C 1689	N 404	O 503	S 11	0	0	0
1	B	329	Total 2607	C 1689	N 404	O 503	S 11	0	0	0

- Molecule 2 is 5,5,5-TRIFLUORO-3-HYDROXY-4-[2-(5,5,5-TRIFLUORO-3-HYDROXY-4-{3-METHYL-2-[3-METHYL-2-(3-METHYL-BUTYRYLAMINO)-BUTYRYLAMINO]-BUTYRYLAMINO}-PENTANOYLAMINO)-PROPIONYLAMINO]-PENTANOIC ACID (three-letter code: 5FP) (formula: C<sub>28</sub>H<sub>45</sub>F<sub>6</sub>N<sub>5</sub>O<sub>9</sub>).



Mol	Chain	Residues	Atoms					ZeroOcc	AltConf
			Total	C	F	N	O		
2	A	1	Total 48	C 28	F 6	N 5	O 9	0	0
2	B	1	Total 48	C 28	F 6	N 5	O 9	0	0

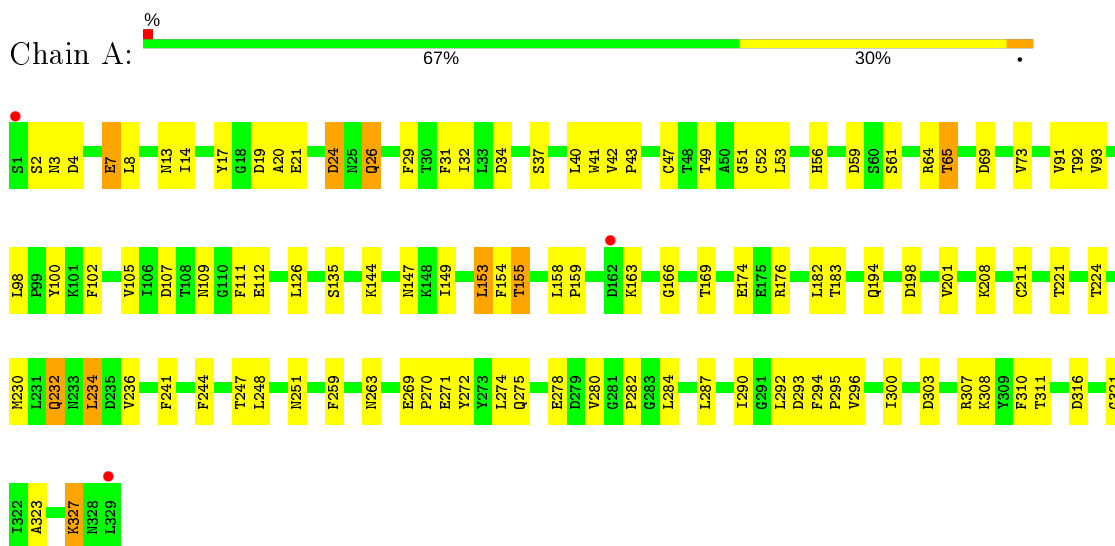
- Molecule 3 is water.

<b>Mol</b>	<b>Chain</b>	<b>Residues</b>	<b>Atoms</b>		<b>ZeroOcc</b>	<b>AltConf</b>
3	A	15	Total 15	O 15	0	0
3	B	22	Total 22	O 22	0	0

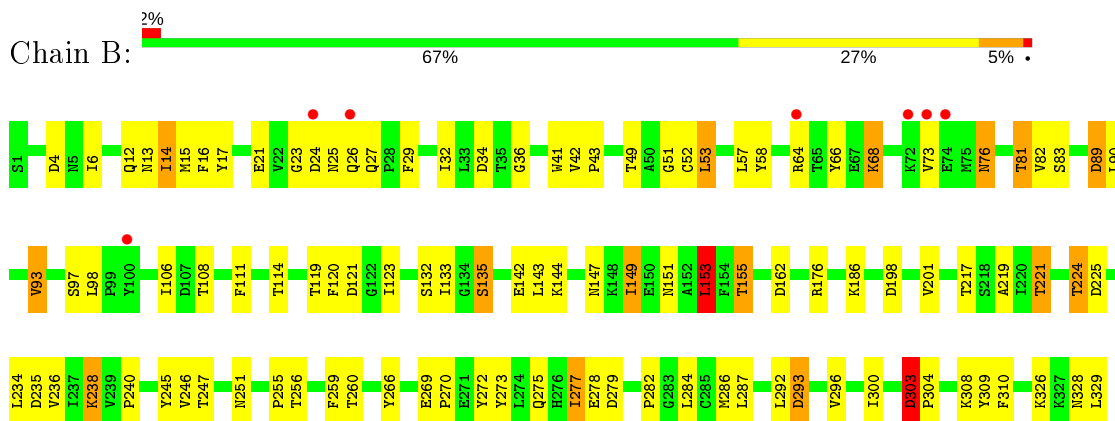
### 3 Residue-property plots [i](#)

These plots are drawn for all protein, RNA and DNA chains in the entry. The first graphic for a chain summarises the proportions of the various outlier classes displayed in the second graphic. The second graphic shows the sequence view annotated by issues in geometry and electron density. Residues are color-coded according to the number of geometric quality criteria for which they contain at least one outlier: green = 0, yellow = 1, orange = 2 and red = 3 or more. A red dot above a residue indicates a poor fit to the electron density ( $RSRZ > 2$ ). Stretches of 2 or more consecutive residues without any outlier are shown as a green connector. Residues present in the sample, but not in the model, are shown in grey.

- Molecule 1: Plasmepsin 2



- Molecule 1: Plasmepsin 2



## 4 Data and refinement statistics

Property	Value	Source
Space group	P 31 2 1	Depositor
Cell constants a, b, c, $\alpha$ , $\beta$ , $\gamma$	141.15Å 141.15Å 97.38Å 90.00° 90.00° 120.00°	Depositor
Resolution (Å)	57.00 – 2.80 57.15 – 2.80	Depositor EDS
% Data completeness (in resolution range)	95.7 (57.00-2.80) 95.7 (57.15-2.80)	Depositor EDS
$R_{merge}$	0.12	Depositor
$R_{sym}$	(Not available)	Depositor
$\langle I/\sigma(I) \rangle$ <sup>1</sup>	1.13 (at 2.81Å)	Xtriage
Refinement program	REFMAC 5.1.24	Depositor
R, $R_{free}$	0.216 , 0.268 0.209 , 0.258	Depositor DCC
$R_{free}$ test set	1353 reflections (4.85%)	wwPDB-VP
Wilson B-factor (Å <sup>2</sup> )	64.4	Xtriage
Anisotropy	0.132	Xtriage
Bulk solvent $k_{sol}$ (e/Å <sup>3</sup> ), $B_{sol}$ (Å <sup>2</sup> )	0.35 , 43.8	EDS
L-test for twinning <sup>2</sup>	$\langle  L  \rangle = 0.48$ , $\langle L^2 \rangle = 0.30$	Xtriage
Estimated twinning fraction	0.021 for -h,-k,l	Xtriage
$F_o, F_c$ correlation	0.94	EDS
Total number of atoms	5347	wwPDB-VP
Average B, all atoms (Å <sup>2</sup> )	58.0	wwPDB-VP

Xtriage's analysis on translational NCS is as follows: *The largest off-origin peak in the Patterson function is 3.73% of the height of the origin peak. No significant pseudotranslation is detected.*

<sup>1</sup>Intensities estimated from amplitudes.

<sup>2</sup>Theoretical values of  $\langle |L| \rangle$ ,  $\langle L^2 \rangle$  for acentric reflections are 0.5, 0.333 respectively for untwinned datasets, and 0.375, 0.2 for perfectly twinned datasets.

## 5 Model quality [i](#)

### 5.1 Standard geometry [i](#)

Bond lengths and bond angles in the following residue types are not validated in this section: 5FP

The Z score for a bond length (or angle) is the number of standard deviations the observed value is removed from the expected value. A bond length (or angle) with  $|Z| > 5$  is considered an outlier worth inspection. RMSZ is the root-mean-square of all Z scores of the bond lengths (or angles).

Mol	Chain	Bond lengths		Bond angles	
		RMSZ	# Z  >5	RMSZ	# Z  >5
1	A	0.59	0/2674	0.87	4/3638 (0.1%)
1	B	0.59	0/2674	0.84	9/3638 (0.2%)
All	All	0.59	0/5348	0.86	13/7276 (0.2%)

There are no bond length outliers.

All (13) bond angle outliers are listed below:

Mol	Chain	Res	Type	Atoms	Z	Observed(°)	Ideal(°)
1	A	303	ASP	CB-CG-OD2	5.96	123.67	118.30
1	B	279	ASP	CB-CG-OD2	5.82	123.54	118.30
1	B	89	ASP	CB-CG-OD2	5.49	123.24	118.30
1	B	293	ASP	CB-CG-OD2	5.42	123.18	118.30
1	B	162	ASP	CB-CG-OD2	5.36	123.12	118.30
1	B	225	ASP	CB-CG-OD2	5.36	123.12	118.30
1	B	4	ASP	CB-CG-OD2	5.35	123.12	118.30
1	A	19	ASP	CB-CG-OD2	5.27	123.04	118.30
1	B	303	ASP	CB-CG-OD2	5.17	122.95	118.30
1	B	121	ASP	CB-CG-OD2	5.14	122.92	118.30
1	A	316	ASP	CB-CG-OD2	5.09	122.88	118.30
1	A	107	ASP	CB-CG-OD2	5.06	122.86	118.30
1	B	153	LEU	CA-CB-CG	5.04	126.88	115.30

There are no chirality outliers.

There are no planarity outliers.

### 5.2 Too-close contacts [i](#)

In the following table, the Non-H and H(model) columns list the number of non-hydrogen atoms and hydrogen atoms in the chain respectively. The H(added) column lists the number of hydrogen

atoms added and optimized by MolProbity. The Clashes column lists the number of clashes within the asymmetric unit, whereas Symm-Clashes lists symmetry related clashes.

Mol	Chain	Non-H	H(model)	H(added)	Clashes	Symm-Clashes
1	A	2607	0	2538	47	0
1	B	2607	0	2538	52	0
2	A	48	0	44	0	0
2	B	48	0	44	1	0
3	A	15	0	0	1	0
3	B	22	0	0	1	0
All	All	5347	0	5164	96	0

The all-atom clashscore is defined as the number of clashes found per 1000 atoms (including hydrogen atoms). The all-atom clashscore for this structure is 9.

All (96) close contacts within the same asymmetric unit are listed below, sorted by their clash magnitude.

Atom-1	Atom-2	Interatomic distance (Å)	Clash overlap (Å)
1:B:49:THR:HG22	1:B:51:GLY:H	1.18	1.07
1:A:221:THR:HB	1:A:300:ILE:HB	1.54	0.89
1:B:221:THR:HB	1:B:300:ILE:HB	1.65	0.78
1:A:236:VAL:HG22	1:A:247:THR:CG2	2.14	0.77
1:B:98:LEU:HD22	1:B:143:LEU:HD21	1.70	0.73
1:B:155:THR:HG22	3:B:1348:HOH:O	1.87	0.73
1:A:49:THR:HG23	1:A:109:ASN:OD1	1.89	0.73
1:B:32:ILE:HB	1:B:123:ILE:HG12	1.72	0.70
1:A:47:CYS:HG	1:A:52:CYS:HG	0.70	0.70
1:B:278:GLU:OE2	1:B:282:PRO:HA	1.92	0.69
1:A:24:ASP:HB3	1:A:65:THR:OG1	1.92	0.69
1:B:238:LYS:HG2	1:B:245:TYR:CE1	2.28	0.67
1:B:52:CYS:O	1:B:57:LEU:HD21	1.93	0.67
1:B:224:THR:HB	1:B:293:ASP:OD1	1.94	0.66
1:B:236:VAL:HG12	1:B:247:THR:HG22	1.77	0.66
1:A:294:PHE:HB3	1:A:295:PRO:CD	2.27	0.65
1:B:6:ILE:HG12	1:B:93:VAL:HG12	1.79	0.64
1:A:221:THR:HG22	3:A:351:HOH:O	1.97	0.63
1:B:155:THR:HG23	1:B:310:PHE:CE1	2.35	0.62
1:B:149:ILE:HD12	1:B:151:ASN:O	2.04	0.58
1:A:236:VAL:HG22	1:A:247:THR:HG21	1.85	0.57
1:B:201:VAL:HG13	1:B:255:PRO:HB2	1.88	0.56
1:B:155:THR:HG23	1:B:310:PHE:CZ	2.40	0.56
1:A:241:PHE:CD1	2:B:400:5FP:H372	2.42	0.55
1:B:23:GLY:HA2	1:B:89:ASP:OD1	2.06	0.55

*Continued on next page...*



*Continued from previous page...*

Atom-1	Atom-2	Interatomic distance (Å)	Clash overlap (Å)
1:B:221:THR:HG23	1:B:292:LEU:HB3	1.89	0.54
1:B:42:VAL:HG22	1:B:43:PRO:HD2	1.90	0.54
1:B:236:VAL:HG12	1:B:247:THR:CG2	2.38	0.54
1:A:278:GLU:OE2	1:A:282:PRO:HA	2.07	0.53
1:A:274:LEU:HD23	1:A:287:LEU:HD23	1.90	0.53
1:B:256:THR:HG23	1:B:269:GLU:HA	1.91	0.52
1:B:49:THR:HG21	1:B:108:THR:OG1	2.09	0.52
1:B:25:ASN:ND2	1:B:27:GLN:HG3	2.25	0.52
1:B:12:GLN:O	1:B:13:ASN:HB2	2.09	0.51
1:A:21:GLU:HG3	1:A:26:GLN:NE2	2.26	0.51
1:A:272:TYR:CZ	1:A:308:LYS:HG3	2.45	0.51
1:B:17:TYR:CE1	1:B:120:PHE:HB3	2.45	0.50
1:A:174:GLU:OE1	1:A:176:ARG:HD3	2.12	0.50
1:B:272:TYR:CE1	1:B:308:LYS:HB2	2.46	0.50
1:B:234:LEU:HD21	1:B:255:PRO:HD3	1.92	0.50
1:A:41:TRP:CE3	1:A:105:VAL:HG21	2.47	0.50
1:B:29:PHE:CZ	1:B:58:TYR:HB2	2.47	0.49
1:A:49:THR:CG2	1:A:109:ASN:OD1	2.59	0.49
1:B:14:ILE:HD12	1:B:275:GLN:HG3	1.94	0.49
1:A:21:GLU:HG2	1:A:92:THR:HB	1.95	0.49
1:A:182:LEU:HA	1:A:323:ALA:HB2	1.96	0.48
1:B:15:MET:HG3	1:B:16:PHE:N	2.28	0.48
1:A:29:PHE:HB2	1:A:31:PHE:CE1	2.48	0.48
1:A:102:PHE:C	1:A:102:PHE:CD1	2.86	0.48
1:A:280:VAL:HG13	1:B:246:VAL:HG11	1.96	0.47
1:A:221:THR:HG23	1:A:292:LEU:HB3	1.97	0.47
1:A:153:LEU:C	1:A:153:LEU:HD12	2.35	0.46
1:A:244:PHE:HE2	1:B:286:MET:HE1	1.80	0.46
1:A:159:PRO:HD3	1:A:166:GLY:HA3	1.97	0.45
1:A:43:PRO:HG2	1:A:56:HIS:O	2.16	0.45
1:A:59:ASP:OD1	1:A:61:SER:OG	2.33	0.45
1:B:41:TRP:NE1	1:B:123:ILE:HB	2.31	0.45
1:B:25:ASN:HD21	1:B:27:GLN:HE21	1.62	0.45
1:B:66:TYR:HE2	1:B:68:LYS:HD2	1.81	0.45
1:A:269:GLU:HB2	1:A:270:PRO:CD	2.46	0.45
1:B:155:THR:CG2	1:B:310:PHE:CE1	3.00	0.45
1:A:155:THR:OG1	1:A:310:PHE:CZ	2.69	0.45
1:B:90:LEU:HD11	1:B:97:SER:HB3	1.99	0.45
1:A:224:THR:OG1	1:A:293:ASP:OD2	2.25	0.45
1:A:21:GLU:HB2	1:A:26:GLN:O	2.17	0.44
1:B:76:ASN:HB3	1:B:81:THR:HG23	1.99	0.44

*Continued on next page...*

Continued from previous page...

Atom-1	Atom-2	Interatomic distance (Å)	Clash overlap (Å)
1:A:183:THR:O	1:A:321:GLY:HA2	2.18	0.44
1:B:273:TYR:HA	1:B:304:PRO:HB3	2.01	0.43
1:A:221:THR:CG2	1:A:292:LEU:HB3	2.48	0.43
1:B:236:VAL:CG1	1:B:247:THR:HG22	2.47	0.43
1:A:126:LEU:HB3	1:A:154:PHE:CZ	2.54	0.43
1:A:234:LEU:HB2	1:A:236:VAL:HG23	2.01	0.43
1:A:91:VAL:CG2	1:A:100:TYR:HB3	2.49	0.43
1:B:270:PRO:HA	1:B:273:TYR:CE2	2.53	0.43
1:A:163:LYS:NZ	1:A:327:LYS:HE2	2.34	0.43
1:A:112:GLU:HB3	1:B:224:THR:HG21	2.01	0.42
1:B:155:THR:CG2	1:B:310:PHE:CZ	3.02	0.42
1:A:194:GLN:HA	1:A:211:CYS:O	2.19	0.42
1:A:26:GLN:HA	1:A:26:GLN:OE1	2.19	0.41
1:A:17:TYR:HE1	1:A:32:ILE:HG12	1.84	0.41
1:B:53:LEU:HA	1:B:53:LEU:HD12	1.92	0.41
1:B:201:VAL:CG1	1:B:255:PRO:HB2	2.51	0.41
1:B:153:LEU:HD12	1:B:153:LEU:C	2.40	0.41
1:A:201:VAL:HG11	1:A:230:MET:HG3	2.02	0.41
1:A:31:PHE:CE2	1:A:40:LEU:HD11	2.55	0.41
1:B:34:ASP:C	1:B:36:GLY:N	2.74	0.41
1:B:217:THR:HG22	1:B:219:ALA:H	1.86	0.41
1:B:277:ILE:HG13	1:B:284:LEU:O	2.21	0.41
1:A:20:ALA:HB3	1:A:31:PHE:CE1	2.56	0.41
1:A:7:GLU:HG3	1:A:8:LEU:N	2.36	0.41
1:B:275:GLN:HB3	1:B:286:MET:HB2	2.03	0.41
1:A:198:ASP:O	1:A:259:PHE:HA	2.21	0.40
1:B:308:LYS:HD3	1:B:309:TYR:CE2	2.56	0.40
1:A:49:THR:HG22	1:A:51:GLY:H	1.86	0.40
1:B:217:THR:O	1:B:303:ASP:HB2	2.21	0.40
1:B:198:ASP:O	1:B:259:PHE:HA	2.20	0.40

There are no symmetry-related clashes.

## 5.3 Torsion angles [i](#)

### 5.3.1 Protein backbone [i](#)

In the following table, the Percentiles column shows the percent Ramachandran outliers of the chain as a percentile score with respect to all X-ray entries followed by that with respect to entries of similar resolution.

The Analysed column shows the number of residues for which the backbone conformation was analysed, and the total number of residues.

Mol	Chain	Analysed	Favoured	Allowed	Outliers	Percentiles	
1	A	327/329 (99%)	303 (93%)	20 (6%)	4 (1%)	13	39
1	B	327/329 (99%)	295 (90%)	28 (9%)	4 (1%)	13	39
All	All	654/658 (99%)	598 (91%)	48 (7%)	8 (1%)	13	39

All (8) Ramachandran outliers are listed below:

Mol	Chain	Res	Type
1	A	232	GLN
1	B	26	GLN
1	B	147	ASN
1	B	135	SER
1	A	14	ILE
1	A	271	GLU
1	A	69	ASP
1	B	240	PRO

### 5.3.2 Protein sidechains [i](#)

In the following table, the Percentiles column shows the percent sidechain outliers of the chain as a percentile score with respect to all X-ray entries followed by that with respect to entries of similar resolution.

The Analysed column shows the number of residues for which the sidechain conformation was analysed, and the total number of residues.

Mol	Chain	Analysed	Rotameric	Outliers	Percentiles	
1	A	294/294 (100%)	256 (87%)	38 (13%)	4	13
1	B	294/294 (100%)	254 (86%)	40 (14%)	3	11
All	All	588/588 (100%)	510 (87%)	78 (13%)	4	12

All (78) residues with a non-rotameric sidechain are listed below:

Mol	Chain	Res	Type
1	A	2	SER
1	A	3	ASN
1	A	4	ASP
1	A	7	GLU
1	A	13	ASN

*Continued on next page...*

*Continued from previous page...*

<b>Mol</b>	<b>Chain</b>	<b>Res</b>	<b>Type</b>
1	A	24	ASP
1	A	26	GLN
1	A	34	ASP
1	A	37	SER
1	A	42	VAL
1	A	53	LEU
1	A	64	ARG
1	A	65	THR
1	A	73	VAL
1	A	93	VAL
1	A	98	LEU
1	A	111	PHE
1	A	135	SER
1	A	144	LYS
1	A	147	ASN
1	A	149	ILE
1	A	153	LEU
1	A	155	THR
1	A	158	LEU
1	A	169	THR
1	A	208	LYS
1	A	232	GLN
1	A	234	LEU
1	A	248	LEU
1	A	251	ASN
1	A	263	ASN
1	A	275	GLN
1	A	284	LEU
1	A	290	ILE
1	A	296	VAL
1	A	307	ARG
1	A	311	THR
1	A	327	LYS
1	B	14	ILE
1	B	21	GLU
1	B	24	ASP
1	B	53	LEU
1	B	64	ARG
1	B	68	LYS
1	B	73	VAL
1	B	76	ASN
1	B	81	THR

*Continued on next page...*

*Continued from previous page...*

Mol	Chain	Res	Type
1	B	82	VAL
1	B	83	SER
1	B	93	VAL
1	B	106	ILE
1	B	111	PHE
1	B	114	THR
1	B	119	THR
1	B	132	SER
1	B	133	ILE
1	B	135	SER
1	B	142	GLU
1	B	144	LYS
1	B	149	ILE
1	B	153	LEU
1	B	155	THR
1	B	176	ARG
1	B	186	LYS
1	B	221	THR
1	B	224	THR
1	B	235	ASP
1	B	238	LYS
1	B	251	ASN
1	B	260	THR
1	B	266	TYR
1	B	277	ILE
1	B	287	LEU
1	B	296	VAL
1	B	303	ASP
1	B	326	LYS
1	B	328	ASN
1	B	329	LEU

Some sidechains can be flipped to improve hydrogen bonding and reduce clashes. All (8) such sidechains are listed below:

Mol	Chain	Res	Type
1	A	76	ASN
1	A	147	ASN
1	A	233	ASN
1	A	251	ASN
1	A	275	GLN
1	B	12	GLN
1	B	145	ASN

*Continued on next page...*

*Continued from previous page...*

Mol	Chain	Res	Type
1	B	251	ASN

### 5.3.3 RNA [i](#)

There are no RNA molecules in this entry.

## 5.4 Non-standard residues in protein, DNA, RNA chains [i](#)

There are no non-standard protein/DNA/RNA residues in this entry.

## 5.5 Carbohydrates [i](#)

There are no carbohydrates in this entry.

## 5.6 Ligand geometry [i](#)

2 ligands are modelled in this entry.

In the following table, the Counts columns list the number of bonds (or angles) for which Mogul statistics could be retrieved, the number of bonds (or angles) that are observed in the model and the number of bonds (or angles) that are defined in the Chemical Component Dictionary. The Link column lists molecule types, if any, to which the group is linked. The Z score for a bond length (or angle) is the number of standard deviations the observed value is removed from the expected value. A bond length (or angle) with  $|Z| > 2$  is considered an outlier worth inspection. RMSZ is the root-mean-square of all Z scores of the bond lengths (or angles).

Mol	Type	Chain	Res	Link	Bond lengths			Bond angles		
					Counts	RMSZ	# Z  > 2	Counts	RMSZ	# Z  > 2
2	5FP	B	400	-	44,47,47	1.76	5 (11%)	58,68,68	1.40	8 (13%)
2	5FP	A	400	-	44,47,47	1.94	6 (13%)	58,68,68	1.04	1 (1%)

In the following table, the Chirals column lists the number of chiral outliers, the number of chiral centers analysed, the number of these observed in the model and the number defined in the Chemical Component Dictionary. Similar counts are reported in the Torsion and Rings columns. '-' means no outliers of that kind were identified.

Mol	Type	Chain	Res	Link	Chirals	Torsions	Rings
2	5FP	B	400	-	-	2/70/72/72	-
2	5FP	A	400	-	-	13/70/72/72	-

All (11) bond length outliers are listed below:

Mol	Chain	Res	Type	Atoms	Z	Observed(Å)	Ideal(Å)
2	A	400	5FP	C9-N8	5.83	1.46	1.34
2	A	400	5FP	C15-N14	5.54	1.46	1.34
2	B	400	5FP	C9-N8	5.46	1.45	1.34
2	A	400	5FP	C21-N20	5.42	1.45	1.34
2	B	400	5FP	C21-N20	5.36	1.45	1.34
2	A	400	5FP	C18-N17	5.21	1.45	1.34
2	B	400	5FP	C6-N5	5.11	1.45	1.34
2	A	400	5FP	C6-N5	5.08	1.45	1.34
2	B	400	5FP	C18-N17	4.52	1.44	1.34
2	B	400	5FP	C15-N14	4.50	1.43	1.34
2	A	400	5FP	C13-C12	2.19	1.55	1.52

All (9) bond angle outliers are listed below:

Mol	Chain	Res	Type	Atoms	Z	Observed(°)	Ideal(°)
2	B	400	5FP	F3-C13-C12	-3.97	105.85	112.14
2	B	400	5FP	O18-C18-N17	-3.39	116.65	122.93
2	B	400	5FP	O21-C21-C22	-2.84	117.34	121.50
2	A	400	5FP	F5-C25-C4	-2.74	107.80	112.14
2	B	400	5FP	C22-C21-N20	2.69	119.86	116.33
2	B	400	5FP	C10-C9-N8	2.67	119.83	116.33
2	B	400	5FP	F2-C13-F1	2.41	112.25	106.87
2	B	400	5FP	C12-N14-C15	-2.24	119.58	122.95
2	B	400	5FP	O3-C3-C2	-2.04	105.76	109.57

There are no chirality outliers.

All (15) torsion outliers are listed below:

Mol	Chain	Res	Type	Atoms
2	B	400	5FP	C1-C2-C3-O3
2	B	400	5FP	C1-C2-C3-C4
2	A	400	5FP	C21-C22-C23-C24
2	A	400	5FP	C1-C2-C3-O3
2	A	400	5FP	C1-C2-C3-C4
2	A	400	5FP	F4-C25-C4-N5
2	A	400	5FP	N20-C19-C36-C38
2	A	400	5FP	N20-C19-C36-C37
2	A	400	5FP	C18-C19-C36-C37
2	A	400	5FP	C18-C19-C36-C38
2	A	400	5FP	C21-C22-C23-C39
2	A	400	5FP	F4-C25-C4-C3

*Continued on next page...*

*Continued from previous page...*

Mol	Chain	Res	Type	Atoms
2	A	400	5FP	F5-C25-C4-N5
2	A	400	5FP	F6-C25-C4-N5
2	A	400	5FP	N14-C15-C16-N17

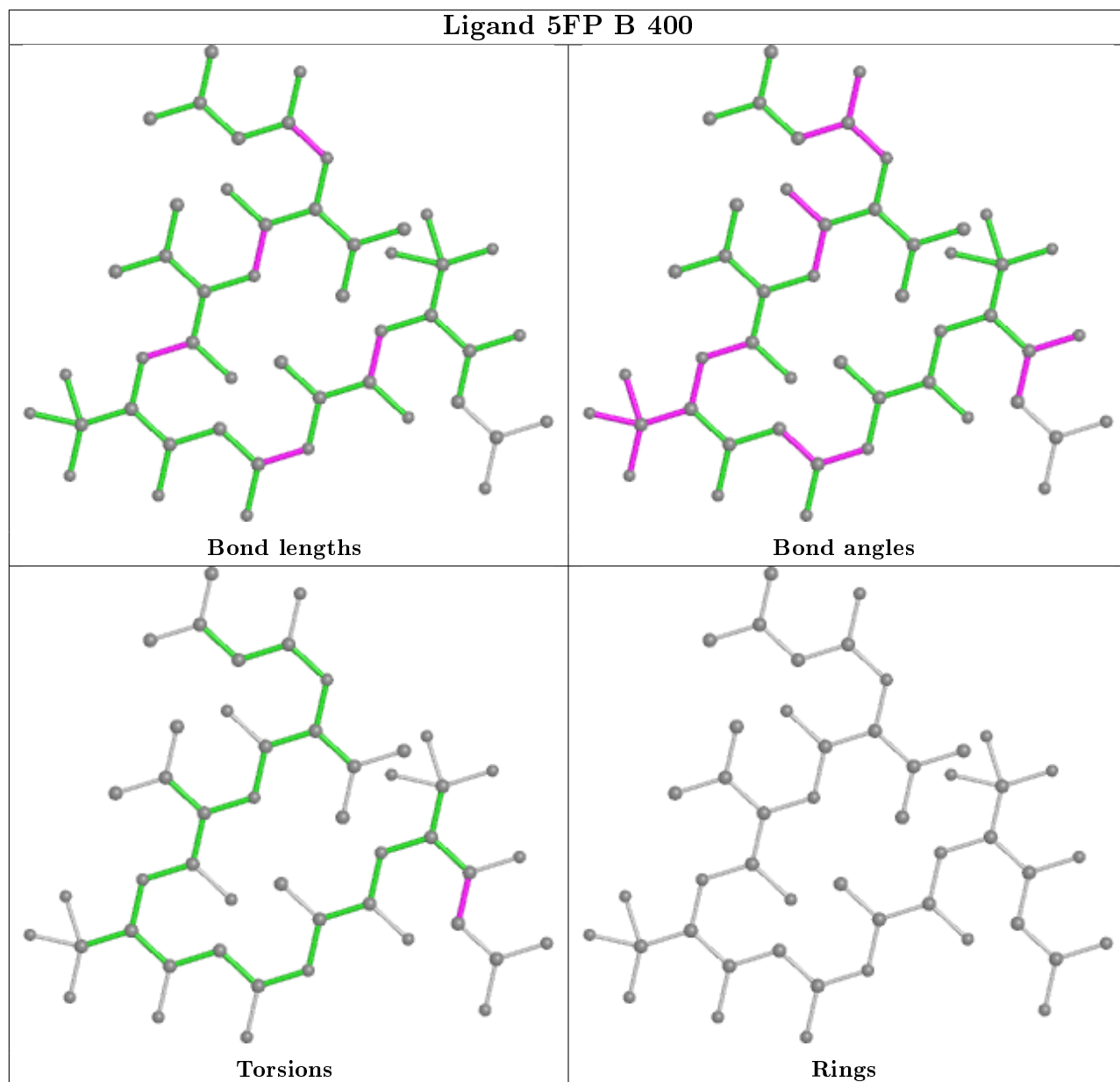
There are no ring outliers.

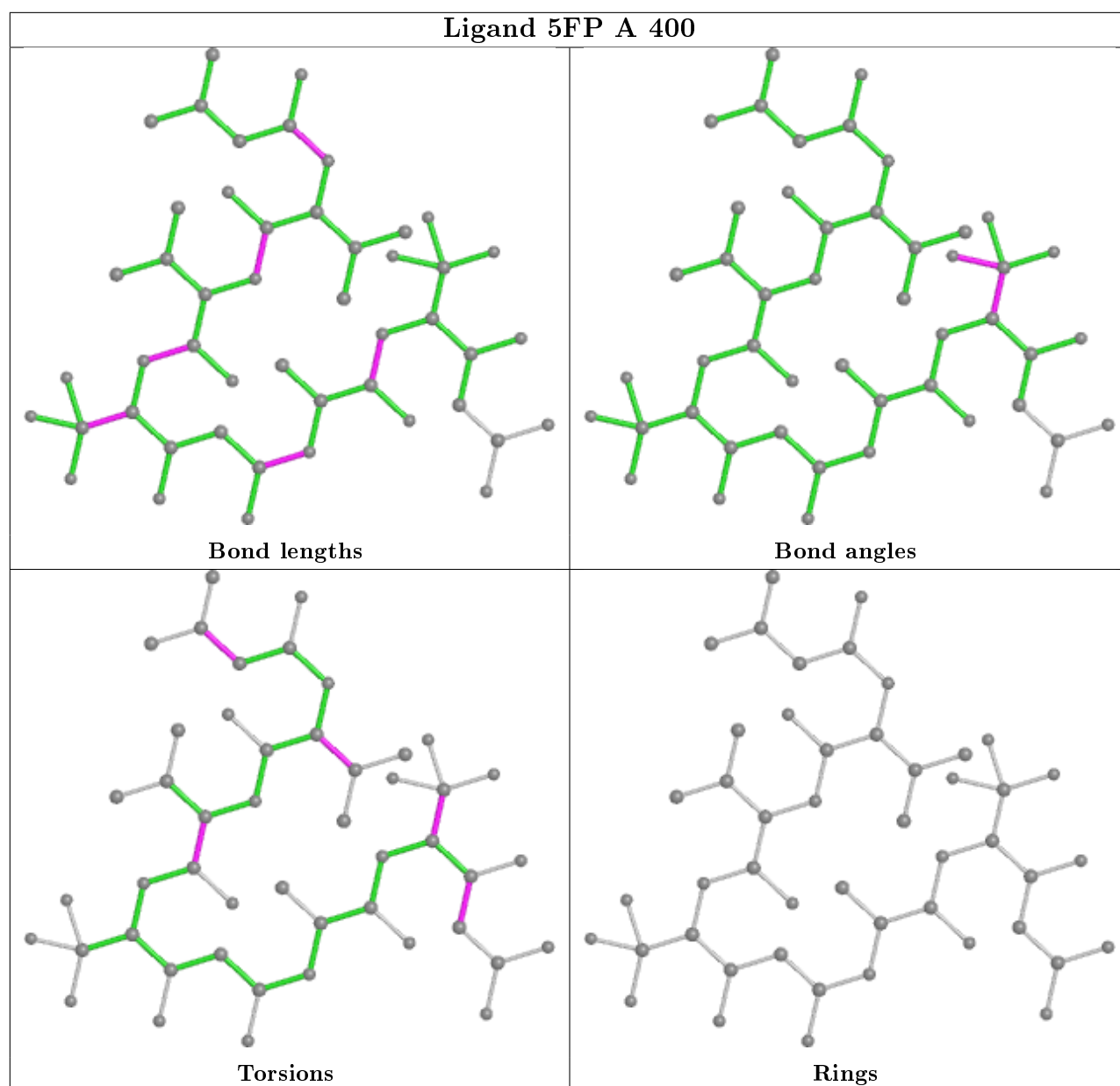
1 monomer is involved in 1 short contact:

Mol	Chain	Res	Type	Clashes	Symm-Clashes
2	B	400	5FP	1	0

The following is a two-dimensional graphical depiction of Mogul quality analysis of bond lengths, bond angles, torsion angles, and ring geometry for all instances of the Ligand of Interest. In addition, ligands with molecular weight > 250 and outliers as shown on the validation Tables will also be included. For torsion angles, if less than 5% of the Mogul distribution of torsion angles is within 10 degrees of the torsion angle in question, then that torsion angle is considered an outlier. Any bond that is central to one or more torsion angles identified as an outlier by Mogul will be highlighted in the graph. For rings, the root-mean-square deviation (RMSD) between the ring in question and similar rings identified by Mogul is calculated over all ring torsion angles. If the average RMSD is greater than 60 degrees and the minimal RMSD between the ring in question and any Mogul-identified rings is also greater than 60 degrees, then that ring is considered an outlier. The outliers are highlighted in purple. The color gray indicates Mogul did not find sufficient equivalents in the CSD to analyse the geometry.







## 5.7 Other polymers [i](#)

There are no such residues in this entry.

## 5.8 Polymer linkage issues [i](#)

There are no chain breaks in this entry.

## 6 Fit of model and data [i](#)

### 6.1 Protein, DNA and RNA chains [i](#)

In the following table, the column labelled ‘#RSRZ> 2’ contains the number (and percentage) of RSRZ outliers, followed by percent RSRZ outliers for the chain as percentile scores relative to all X-ray entries and entries of similar resolution. The OWAB column contains the minimum, median, 95<sup>th</sup> percentile and maximum values of the occupancy-weighted average B-factor per residue. The column labelled ‘Q< 0.9’ lists the number of (and percentage) of residues with an average occupancy less than 0.9.

Mol	Chain	Analysed	<RSRZ>	#RSRZ>2	OWAB(Å <sup>2</sup> )	Q<0.9
1	A	329/329 (100%)	-0.14	3 (0%) 84 80	38, 56, 79, 93	0
1	B	329/329 (100%)	0.04	7 (2%) 63 54	39, 59, 83, 92	0
All	All	658/658 (100%)	-0.05	10 (1%) 73 68	38, 57, 80, 93	0

All (10) RSRZ outliers are listed below:

Mol	Chain	Res	Type	RSRZ
1	B	72	LYS	3.8
1	A	1	SER	3.7
1	B	73	VAL	3.3
1	A	162	ASP	2.8
1	A	329	LEU	2.7
1	B	26	GLN	2.6
1	B	24	ASP	2.4
1	B	74	GLU	2.3
1	B	64	ARG	2.2
1	B	100	TYR	2.1

### 6.2 Non-standard residues in protein, DNA, RNA chains [i](#)

There are no non-standard protein/DNA/RNA residues in this entry.

### 6.3 Carbohydrates [i](#)

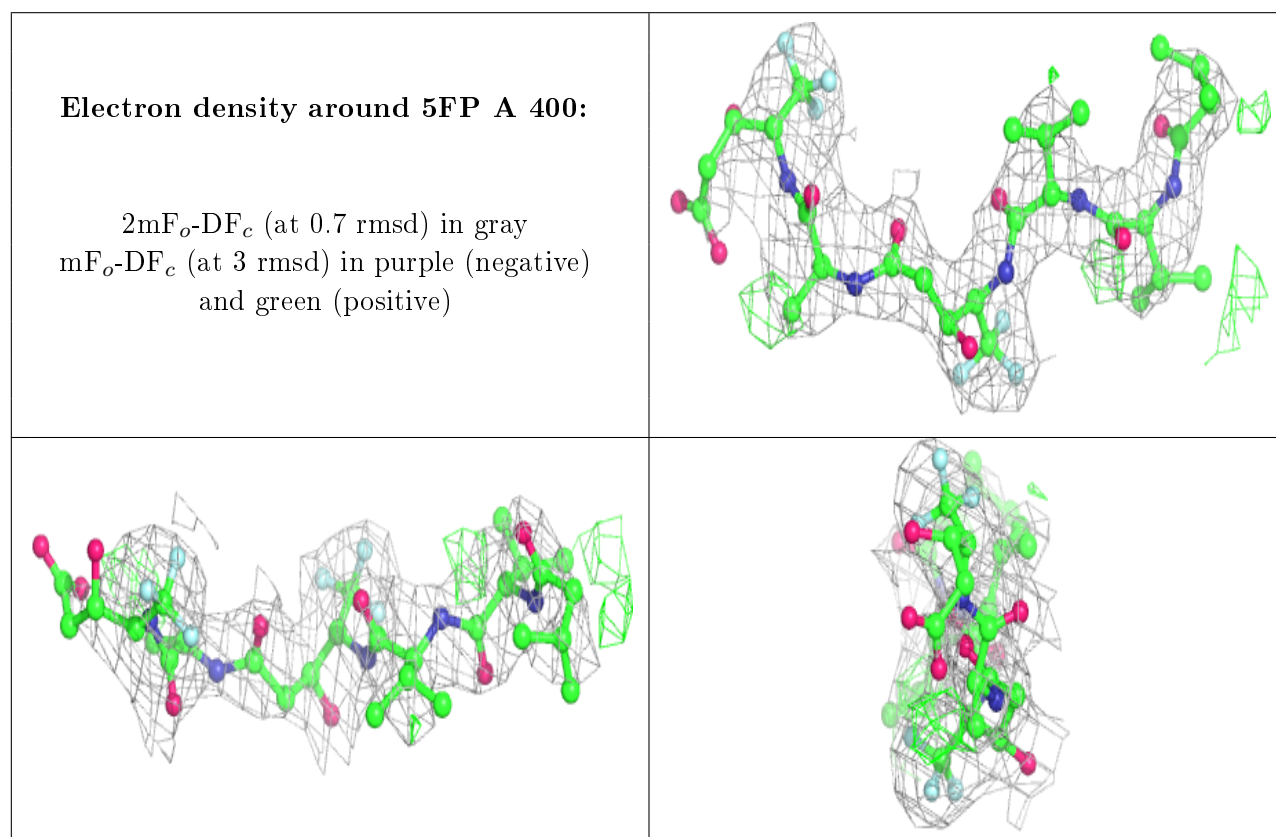
There are no carbohydrates in this entry.

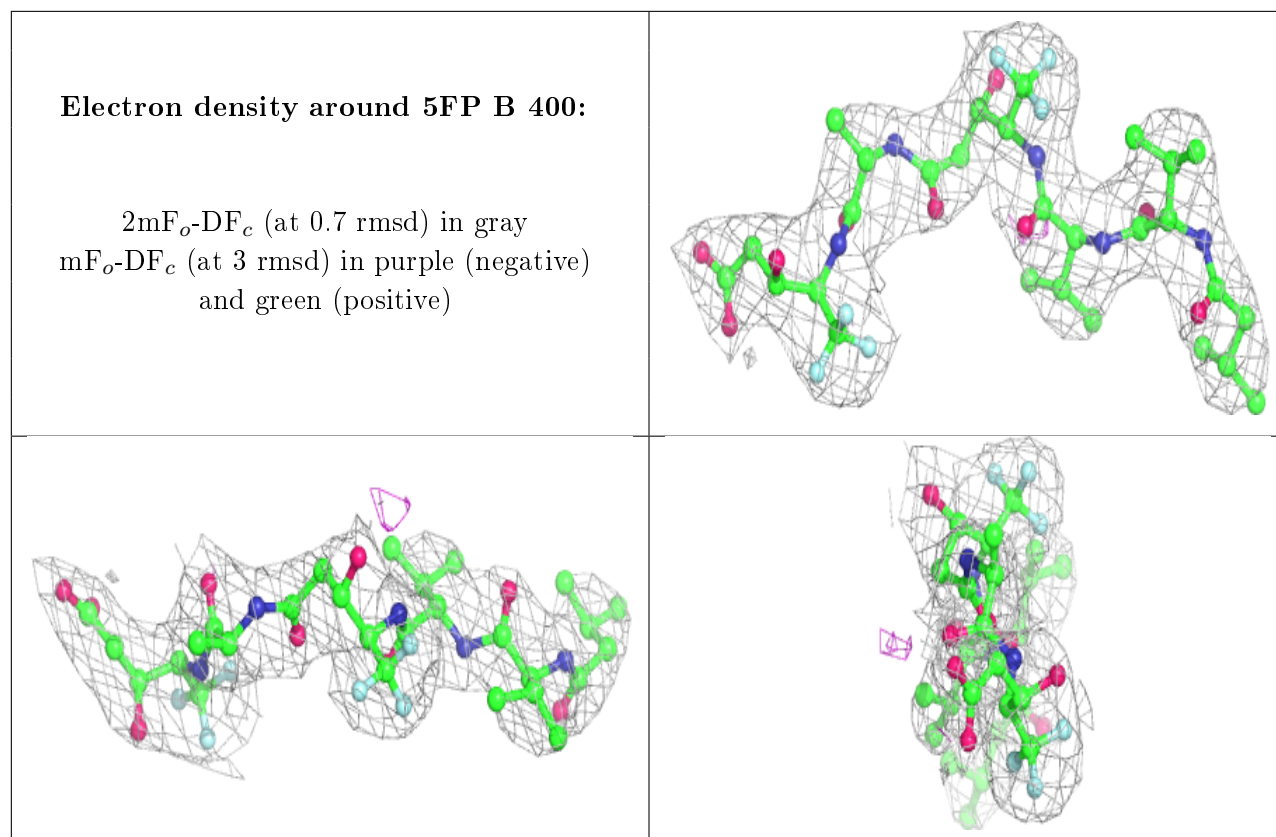
## 6.4 Ligands [i](#)

In the following table, the Atoms column lists the number of modelled atoms in the group and the number defined in the chemical component dictionary. The B-factors column lists the minimum, median, 95<sup>th</sup> percentile and maximum values of B factors of atoms in the group. The column labelled 'Q<0.9' lists the number of atoms with occupancy less than 0.9.

Mol	Type	Chain	Res	Atoms	RSCC	RSR	B-factors(Å <sup>2</sup> )	Q<0.9
2	5FP	A	400	48/48	0.84	0.24	86,89,100,101	0
2	5FP	B	400	48/48	0.95	0.19	43,50,64,69	0

The following is a graphical depiction of the model fit to experimental electron density of all instances of the Ligand of Interest. In addition, ligands with molecular weight > 250 and outliers as shown on the geometry validation Tables will also be included. Each fit is shown from different orientation to approximate a three-dimensional view.





## 6.5 Other polymers [i](#)

There are no such residues in this entry.