



wwPDB X-ray Structure Validation Summary Report ⓘ

Jun 16, 2024 – 05:46 AM EDT

PDB ID : 1X0J
Title : Crystal structure analysis of the N-terminal bromodomain of human Brd2
Authors : Nakamura, Y.; Umehara, T.; Shirouzu, M.; Padmanabhan, B.; Yokoyama, S.;
RIKEN Structural Genomics/Proteomics Initiative (RSGI)
Deposited on : 2005-03-23
Resolution : 1.80 Å(reported)

This is a wwPDB X-ray Structure Validation Summary Report for a publicly released PDB entry.

We welcome your comments at validation@mail.wwpdb.org

A user guide is available at

<https://www.wwpdb.org/validation/2017/XrayValidationReportHelp>

with specific help available everywhere you see the ⓘ symbol.

The types of validation reports are described at

<http://www.wwpdb.org/validation/2017/FAQs#types>.

The following versions of software and data (see [references ⓘ](#)) were used in the production of this report:

MolProbity : 4.02b-467
Mogul : 2022.3.0, CSD as543be (2022)
Xtrriage (Phenix) : **NOT EXECUTED**
EDS : **NOT EXECUTED**
Percentile statistics : 20191225.v01 (using entries in the PDB archive December 25th 2019)
Ideal geometry (proteins) : Engh & Huber (2001)
Ideal geometry (DNA, RNA) : Parkinson et al. (1996)
Validation Pipeline (wwPDB-VP) : 2.37.1

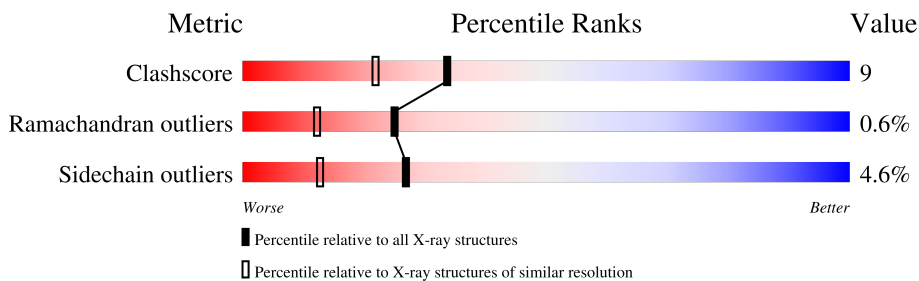
1 Overall quality at a glance

The following experimental techniques were used to determine the structure:

X-RAY DIFFRACTION

The reported resolution of this entry is 1.80 Å.

Percentile scores (ranging between 0-100) for global validation metrics of the entry are shown in the following graphic. The table shows the number of entries on which the scores are based.



Metric	Whole archive (#Entries)	Similar resolution (#Entries, resolution range(Å))
Clashscore	141614	6793 (1.80-1.80)
Ramachandran outliers	138981	6697 (1.80-1.80)
Sidechain outliers	138945	6696 (1.80-1.80)

The table below summarises the geometric issues observed across the polymeric chains and their fit to the electron density. The red, orange, yellow and green segments of the lower bar indicate the fraction of residues that contain outliers for ≥ 3 , 2, 1 and 0 types of geometric quality criteria respectively. A grey segment represents the fraction of residues that are not modelled. The numeric value for each fraction is indicated below the corresponding segment, with a dot representing fractions $\leq 5\%$.

Note EDS was not executed.

Mol	Chain	Length	Quality of chain
1	A	122	
1	B	122	
1	C	122	

The following table lists non-polymeric compounds, carbohydrate monomers and non-standard residues in protein, DNA, RNA chains that are outliers for geometric or electron-density-fit criteria:

Mol	Type	Chain	Res	Chirality	Geometry	Clashes	Electron density
2	DTT	A	1301	X	-	-	-
2	DTT	C	1303	-	X	X	-

2 Entry composition [i](#)

There are 4 unique types of molecules in this entry. The entry contains 3171 atoms, of which 0 are hydrogens and 0 are deuteriums.

In the tables below, the ZeroOcc column contains the number of atoms modelled with zero occupancy, the AltConf column contains the number of residues with at least one atom in alternate conformation and the Trace column contains the number of residues modelled with at most 2 atoms.

- Molecule 1 is a protein called Bromodomain-containing protein 2.

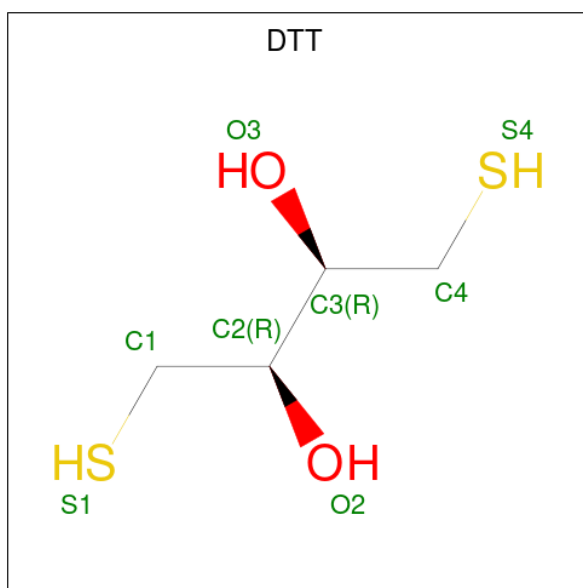
Mol	Chain	Residues	Atoms					ZeroOcc	AltConf	Trace	
			Total	C	N	O	S				Se
1	A	114	953	615	161	168	2	7	0	0	0
1	B	112	935	605	158	163	2	7	0	0	0
1	C	107	895	582	150	154	2	7	0	0	0

There are 21 discrepancies between the modelled and reference sequences:

Chain	Residue	Modelled	Actual	Comment	Reference
A	87	MSE	MET	MODIFIED RESIDUE	UNP P25440
A	121	MSE	MET	MODIFIED RESIDUE	UNP P25440
A	123	MSE	MET	MODIFIED RESIDUE	UNP P25440
A	142	MSE	MET	MODIFIED RESIDUE	UNP P25440
A	148	MSE	MET	MODIFIED RESIDUE	UNP P25440
A	165	MSE	MET	MODIFIED RESIDUE	UNP P25440
A	180	MSE	MET	MODIFIED RESIDUE	UNP P25440
B	87	MSE	MET	MODIFIED RESIDUE	UNP P25440
B	121	MSE	MET	MODIFIED RESIDUE	UNP P25440
B	123	MSE	MET	MODIFIED RESIDUE	UNP P25440
B	142	MSE	MET	MODIFIED RESIDUE	UNP P25440
B	148	MSE	MET	MODIFIED RESIDUE	UNP P25440
B	165	MSE	MET	MODIFIED RESIDUE	UNP P25440
B	180	MSE	MET	MODIFIED RESIDUE	UNP P25440
C	87	MSE	MET	MODIFIED RESIDUE	UNP P25440
C	121	MSE	MET	MODIFIED RESIDUE	UNP P25440
C	123	MSE	MET	MODIFIED RESIDUE	UNP P25440
C	142	MSE	MET	MODIFIED RESIDUE	UNP P25440
C	148	MSE	MET	MODIFIED RESIDUE	UNP P25440
C	165	MSE	MET	MODIFIED RESIDUE	UNP P25440
C	180	MSE	MET	MODIFIED RESIDUE	UNP P25440

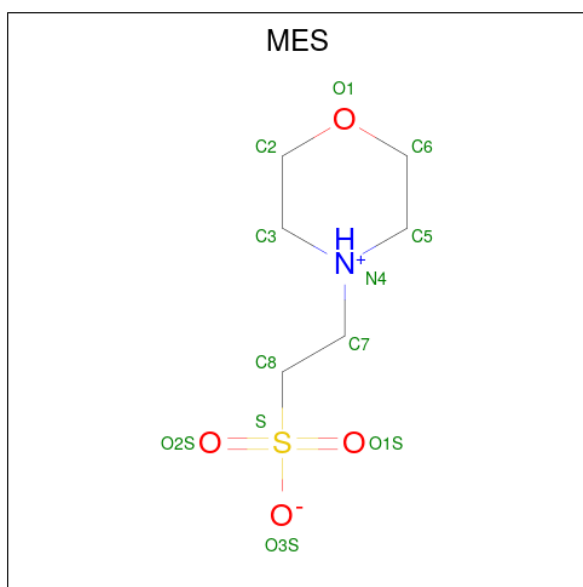
- Molecule 2 is 2,3-DIHYDROXY-1,4-DITHIOBUTANE (three-letter code: DTT) (formula:

C₄H₁₀O₂S₂).



Mol	Chain	Residues	Atoms				ZeroOcc	AltConf
2	A	1	Total	C	O	S	0	0
			8	4	2	2		
2	B	1	Total	C	O	S	0	0
			8	4	2	2		
2	C	1	Total	C	O	S	0	0
			8	4	2	2		

- Molecule 3 is 2-(N-MORPHOLINO)-ETHANESULFONIC ACID (three-letter code: MES) (formula: C₆H₁₃NO₄S).



Mol	Chain	Residues	Atoms					ZeroOcc	AltConf
			Total	C	N	O	S		
3	C	1	12	6	1	4	1	0	0

- Molecule 4 is water.

Mol	Chain	Residues	Atoms		ZeroOcc	AltConf
4	A	108	Total 108	O 108	0	0
4	B	154	Total 154	O 154	0	0
4	C	90	Total 90	O 90	0	0

3 Residue-property plots [i](#)

These plots are drawn for all protein, RNA, DNA and oligosaccharide chains in the entry. The first graphic for a chain summarises the proportions of the various outlier classes displayed in the second graphic. The second graphic shows the sequence view annotated by issues in geometry. Residues are color-coded according to the number of geometric quality criteria for which they contain at least one outlier: green = 0, yellow = 1, orange = 2 and red = 3 or more. Stretches of 2 or more consecutive residues without any outlier are shown as a green connector. Residues present in the sample, but not in the model, are shown in grey.


Note EDS was not executed.

- Molecule 1: Bromodomain-containing protein 2

Chain A: 



- Molecule 1: Bromodomain-containing protein 2

Chain B: 



- Molecule 1: Bromodomain-containing protein 2

Chain C: 



4 Data and refinement statistics

Xtrriage (Phenix) and EDS were not executed - this section is therefore incomplete.

Property	Value	Source
Space group	C 1 2 1	Depositor
Cell constants a, b, c, α , β , γ	114.40Å 55.36Å 67.58Å 90.00° 94.07° 90.00°	Depositor
Resolution (Å)	20.00 – 1.80	Depositor
% Data completeness (in resolution range)	92.1 (20.00-1.80)	Depositor
R_{merge}	0.06	Depositor
R_{sym}	(Not available)	Depositor
Refinement program	REFMAC 5.1.24, CNS 1.0	Depositor
R, R_{free}	0.178 , 0.213	Depositor
Estimated twinning fraction	No twinning to report.	Xtrriage
Total number of atoms	3171	wwPDB-VP
Average B, all atoms (Å ²)	36.0	wwPDB-VP

5 Model quality [i](#)

5.1 Standard geometry [i](#)

Bond lengths and bond angles in the following residue types are not validated in this section: DTT, MES

The Z score for a bond length (or angle) is the number of standard deviations the observed value is removed from the expected value. A bond length (or angle) with $|Z| > 5$ is considered an outlier worth inspection. RMSZ is the root-mean-square of all Z scores of the bond lengths (or angles).

Mol	Chain	Bond lengths		Bond angles	
		RMSZ	$\# Z > 5$	RMSZ	$\# Z > 5$
1	A	1.14	0/971	0.94	0/1301
1	B	1.20	1/953 (0.1%)	0.98	4/1277 (0.3%)
1	C	1.18	2/913 (0.2%)	0.94	2/1224 (0.2%)
All	All	1.17	3/2837 (0.1%)	0.96	6/3802 (0.2%)

All (3) bond length outliers are listed below:

Mol	Chain	Res	Type	Atoms	Z	Observed(Å)	Ideal(Å)
1	C	160	ASP	CB-CG	5.81	1.64	1.51
1	C	97	TRP	CB-CG	-5.34	1.40	1.50
1	B	123	MSE	CG-SE	5.32	2.13	1.95

The worst 5 of 6 bond angle outliers are listed below:

Mol	Chain	Res	Type	Atoms	Z	Observed(°)	Ideal(°)
1	C	160	ASP	CB-CG-OD1	8.88	126.29	118.30
1	B	122	ASP	CB-CG-OD2	7.26	124.84	118.30
1	B	160	ASP	CB-CG-OD2	6.22	123.90	118.30
1	B	128	ARG	NE-CZ-NH1	5.43	123.01	120.30
1	B	115	LYS	CD-CE-NZ	-5.33	99.43	111.70

There are no chirality outliers.

There are no planarity outliers.

5.2 Too-close contacts [i](#)

In the following table, the Non-H and H(model) columns list the number of non-hydrogen atoms and hydrogen atoms in the chain respectively. The H(added) column lists the number of hydrogen atoms added and optimized by MolProbity. The Clashes column lists the number of clashes within

the asymmetric unit, whereas Symm-Clashes lists symmetry-related clashes.

Mol	Chain	Non-H	H(model)	H(added)	Clashes	Symm-Clashes
1	A	953	0	946	22	0
1	B	935	0	932	13	0
1	C	895	0	895	14	0
2	A	8	0	6	1	0
2	B	8	0	9	3	0
2	C	8	0	10	4	0
3	C	12	0	13	1	0
4	A	108	0	0	2	0
4	B	154	0	0	6	0
4	C	90	0	0	4	0
All	All	3171	0	2811	48	0

The all-atom clashscore is defined as the number of clashes found per 1000 atoms (including hydrogen atoms). The all-atom clashscore for this structure is 9.

The worst 5 of 48 close contacts within the same asymmetric unit are listed below, sorted by their clash magnitude.

Atom-1	Atom-2	Interatomic distance (Å)	Clash overlap (Å)
1:A:87:MSE:SE	1:A:87:MSE:CE	2.14	1.45
1:B:164:LEU:HD13	4:B:1331:HOH:O	1.82	0.80
1:A:182:GLN:H	1:B:182:GLN:HE21	1.32	0.74
1:C:156:ASN:ND2	2:C:1303:DTT:S1	2.56	0.73
2:C:1303:DTT:H3	4:C:1417:HOH:O	1.88	0.73

There are no symmetry-related clashes.

5.3 Torsion angles [i](#)

5.3.1 Protein backbone [i](#)

In the following table, the Percentiles column shows the percent Ramachandran outliers of the chain as a percentile score with respect to all X-ray entries followed by that with respect to entries of similar resolution.

The Analysed column shows the number of residues for which the backbone conformation was analysed, and the total number of residues.

Mol	Chain	Analysed	Favoured	Allowed	Outliers	Percentiles
1	A	112/122 (92%)	109 (97%)	2 (2%)	1 (1%)	17 6

Continued on next page...

Continued from previous page...

Mol	Chain	Analysed	Favoured	Allowed	Outliers	Percentiles	
1	B	110/122 (90%)	108 (98%)	1 (1%)	1 (1%)	17	6
1	C	105/122 (86%)	104 (99%)	1 (1%)	0	100	100
All	All	327/366 (89%)	321 (98%)	4 (1%)	2 (1%)	25	12

All (2) Ramachandran outliers are listed below:

Mol	Chain	Res	Type
1	A	184	GLU
1	B	75	VAL

5.3.2 Protein sidechains [i](#)

In the following table, the Percentiles column shows the percent sidechain outliers of the chain as a percentile score with respect to all X-ray entries followed by that with respect to entries of similar resolution.

The Analysed column shows the number of residues for which the sidechain conformation was analysed, and the total number of residues.

Mol	Chain	Analysed	Rotameric	Outliers	Percentiles	
1	A	104/105 (99%)	100 (96%)	4 (4%)	33	18
1	B	102/105 (97%)	96 (94%)	6 (6%)	19	7
1	C	98/105 (93%)	94 (96%)	4 (4%)	30	16
All	All	304/315 (96%)	290 (95%)	14 (5%)	27	13

5 of 14 residues with a non-rotameric sidechain are listed below:

Mol	Chain	Res	Type
1	B	164	LEU
1	B	183	GLU
1	C	157	LYS
1	C	108	LEU
1	C	110	LEU

Sometimes sidechains can be flipped to improve hydrogen bonding and reduce clashes. 5 of 15 such sidechains are listed below:

Mol	Chain	Res	Type
1	B	80	GLN
1	C	101	GLN

Continued on next page...

Continued from previous page...

Mol	Chain	Res	Type
1	B	94	GLN
1	C	156	ASN
1	B	175	GLN

5.3.3 RNA [i](#)

There are no RNA molecules in this entry.

5.4 Non-standard residues in protein, DNA, RNA chains [i](#)

There are no non-standard protein/DNA/RNA residues in this entry.

5.5 Carbohydrates [i](#)

There are no monosaccharides in this entry.

5.6 Ligand geometry [i](#)

4 ligands are modelled in this entry.

In the following table, the Counts columns list the number of bonds (or angles) for which Mogul statistics could be retrieved, the number of bonds (or angles) that are observed in the model and the number of bonds (or angles) that are defined in the Chemical Component Dictionary. The Link column lists molecule types, if any, to which the group is linked. The Z score for a bond length (or angle) is the number of standard deviations the observed value is removed from the expected value. A bond length (or angle) with $|Z| > 2$ is considered an outlier worth inspection. RMSZ is the root-mean-square of all Z scores of the bond lengths (or angles).

Mol	Type	Chain	Res	Link	Bond lengths			Bond angles		
					Counts	RMSZ	# Z > 2	Counts	RMSZ	# Z > 2
2	DTT	A	1301	-	7,7,7	1.40	1 (14%)	4,8,8	16.08	4 (100%)
2	DTT	B	1302	-	7,7,7	0.89	0	4,8,8	12.03	4 (100%)
3	MES	C	1401	-	12,12,12	1.38	1 (8%)	15,16,16	9.85	7 (46%)
2	DTT	C	1303	-	7,7,7	0.76	0	4,8,8	6.42	3 (75%)

In the following table, the Chirals column lists the number of chiral outliers, the number of chiral centers analysed, the number of these observed in the model and the number defined in the Chemical Component Dictionary. Similar counts are reported in the Torsion and Rings columns. '-' means no outliers of that kind were identified.

Mol	Type	Chain	Res	Link	Chirals	Torsions	Rings
2	DTT	A	1301	-	2/2/2/2	3/8/8/8	-
2	DTT	B	1302	-	-	5/8/8/8	-
3	MES	C	1401	-	-	3/6/14/14	0/1/1/1
2	DTT	C	1303	-	-	7/8/8/8	-

All (2) bond length outliers are listed below:

Mol	Chain	Res	Type	Atoms	Z	Observed(Å)	Ideal(Å)
3	C	1401	MES	C8-S	3.95	1.83	1.77
2	A	1301	DTT	O3-C3	2.08	1.47	1.43

The worst 5 of 18 bond angle outliers are listed below:

Mol	Chain	Res	Type	Atoms	Z	Observed(°)	Ideal(°)
3	C	1401	MES	O2S-S-C8	35.35	160.14	106.73
2	A	1301	DTT	O2-C2-C3	-22.77	61.76	109.57
2	A	1301	DTT	O3-C3-C2	-21.40	64.62	109.57
2	B	1302	DTT	O3-C3-C2	-17.47	72.89	109.57
2	B	1302	DTT	O2-C2-C3	-12.15	84.06	109.57

All (2) chirality outliers are listed below:

Mol	Chain	Res	Type	Atom
2	A	1301	DTT	C3
2	A	1301	DTT	C2

5 of 18 torsion outliers are listed below:

Mol	Chain	Res	Type	Atoms
2	A	1301	DTT	C2-C3-C4-S4
2	A	1301	DTT	O3-C3-C4-S4
2	B	1302	DTT	S1-C1-C2-O2
2	B	1302	DTT	C1-C2-C3-O3
2	B	1302	DTT	C1-C2-C3-C4

There are no ring outliers.

4 monomers are involved in 9 short contacts:

Mol	Chain	Res	Type	Clashes	Symm-Clashes
2	A	1301	DTT	1	0
2	B	1302	DTT	3	0

Continued on next page...

Continued from previous page...

Mol	Chain	Res	Type	Clashes	Symm-Clashes
3	C	1401	MES	1	0
2	C	1303	DTT	4	0

5.7 Other polymers [i](#)

There are no such residues in this entry.

5.8 Polymer linkage issues [i](#)

There are no chain breaks in this entry.

6 Fit of model and data [i](#)

6.1 Protein, DNA and RNA chains [i](#)

EDS was not executed - this section is therefore empty.

6.2 Non-standard residues in protein, DNA, RNA chains [i](#)

EDS was not executed - this section is therefore empty.

6.3 Carbohydrates [i](#)

EDS was not executed - this section is therefore empty.

6.4 Ligands [i](#)

EDS was not executed - this section is therefore empty.

6.5 Other polymers [i](#)

EDS was not executed - this section is therefore empty.