



Full wwPDB X-ray Structure Validation Report ⓘ

Mar 4, 2024 – 11:41 PM EST

PDB ID : 1WDM
Title : fatty acid beta-oxidation multienzyme complex from *Pseudomonas fragi*, form I (native3)
Authors : Ishikawa, M.; Tsuchiya, D.; Oyama, T.; Tsunaka, Y.; Morikawa, K.
Deposited on : 2004-05-17
Resolution : 3.80 Å (reported)

This is a Full wwPDB X-ray Structure Validation Report for a publicly released PDB entry.

We welcome your comments at validation@mail.wwpdb.org

A user guide is available at

<https://www.wwpdb.org/validation/2017/XrayValidationReportHelp>

with specific help available everywhere you see the ⓘ symbol.

The types of validation reports are described at

<http://www.wwpdb.org/validation/2017/FAQs#types>.

The following versions of software and data (see [references ⓘ](#)) were used in the production of this report:

MolProbity : 4.02b-467
Mogul : 1.8.5 (274361), CSD as541be (2020)
Xtriage (Phenix) : 1.13
EDS : 2.36
buster-report : 1.1.7 (2018)
Percentile statistics : 20191225.v01 (using entries in the PDB archive December 25th 2019)
Refmac : 5.8.0158
CCP4 : 7.0.044 (Gargrove)
Ideal geometry (proteins) : Engh & Huber (2001)
Ideal geometry (DNA, RNA) : Parkinson et al. (1996)
Validation Pipeline (wwPDB-VP) : 2.36

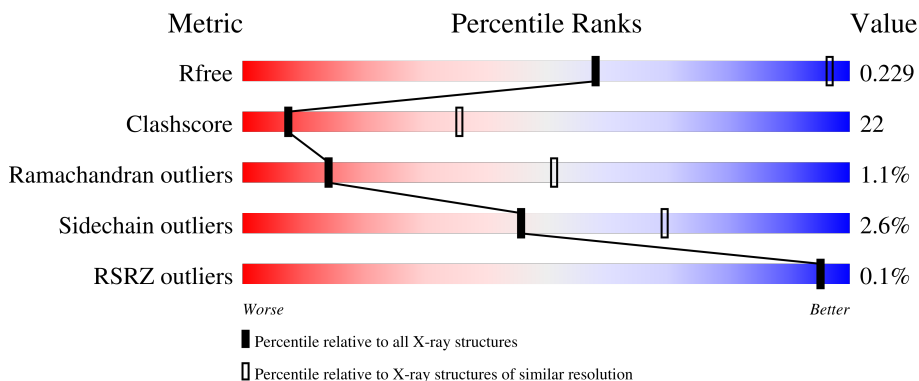
1 Overall quality at a glance i

The following experimental techniques were used to determine the structure:

X-RAY DIFFRACTION

The reported resolution of this entry is 3.80 Å.

Percentile scores (ranging between 0-100) for global validation metrics of the entry are shown in the following graphic. The table shows the number of entries on which the scores are based.



Metric	Whole archive (#Entries)	Similar resolution (#Entries, resolution range(Å))
R_{free}	130704	1212 (4.00-3.60)
Clashscore	141614	1288 (4.00-3.60)
Ramachandran outliers	138981	1243 (4.00-3.60)
Sidechain outliers	138945	1237 (4.00-3.60)
RSRZ outliers	127900	1121 (4.00-3.60)

The table below summarises the geometric issues observed across the polymeric chains and their fit to the electron density. The red, orange, yellow and green segments of the lower bar indicate the fraction of residues that contain outliers for ≥ 3 , 2, 1 and 0 types of geometric quality criteria respectively. A grey segment represents the fraction of residues that are not modelled. The numeric value for each fraction is indicated below the corresponding segment, with a dot representing fractions $\leq 5\%$. The upper red bar (where present) indicates the fraction of residues that have poor fit to the electron density. The numeric value is given above the bar.

Mol	Chain	Length	Quality of chain
1	A	715	61% (green), 37% (yellow), .. (grey)
1	B	715	59% (green), 39% (yellow), .. (grey)
2	C	390	56% (green), 42% (yellow), . (grey)
2	D	390	55% (green), 43% (yellow), . (grey)

The following table lists non-polymeric compounds, carbohydrate monomers and non-standard

residues in protein, DNA, RNA chains that are outliers for geometric or electron-density-fit criteria:

Mol	Type	Chain	Res	Chirality	Geometry	Clashes	Electron density
4	ACO	A	1002	-	-	-	X
4	ACO	C	3001	-	-	-	X

2 Entry composition

There are 5 unique types of molecules in this entry. The entry contains 16541 atoms, of which 0 are hydrogens and 0 are deuteriums.

In the tables below, the ZeroOcc column contains the number of atoms modelled with zero occupancy, the AltConf column contains the number of residues with at least one atom in alternate conformation and the Trace column contains the number of residues modelled with at most 2 atoms.

- Molecule 1 is a protein called Fatty oxidation complex alpha subunit.

Mol	Chain	Residues	Atoms					ZeroOcc	AltConf	Trace
			Total	C	N	O	S			
1	A	707	Total	C	N	O	S	0	0	0
			5257	3355	878	997	27			
1	B	710	Total	C	N	O	S	0	0	0
			5302	3383	889	1003	27			

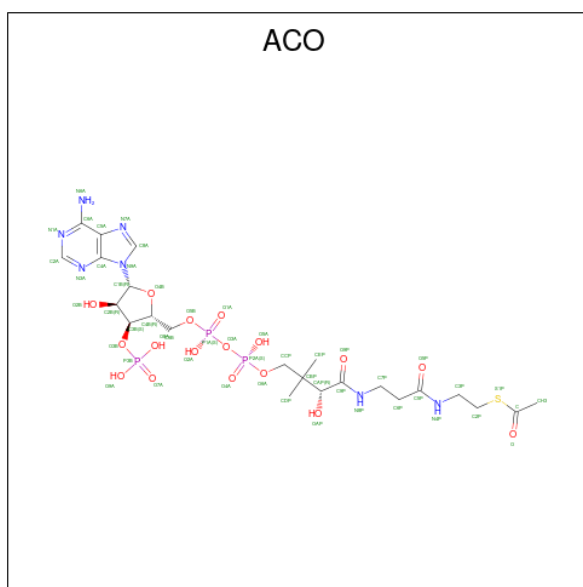
- Molecule 2 is a protein called 3-ketoacyl-CoA thiolase.

Mol	Chain	Residues	Atoms					ZeroOcc	AltConf	Trace
			Total	C	N	O	S			
2	C	390	Total	C	N	O	S	0	0	0
			2871	1786	508	548	29			
2	D	390	Total	C	N	O	S	0	0	0
			2869	1785	510	545	29			

- Molecule 3 is ZINC ION (three-letter code: ZN) (formula: Zn).

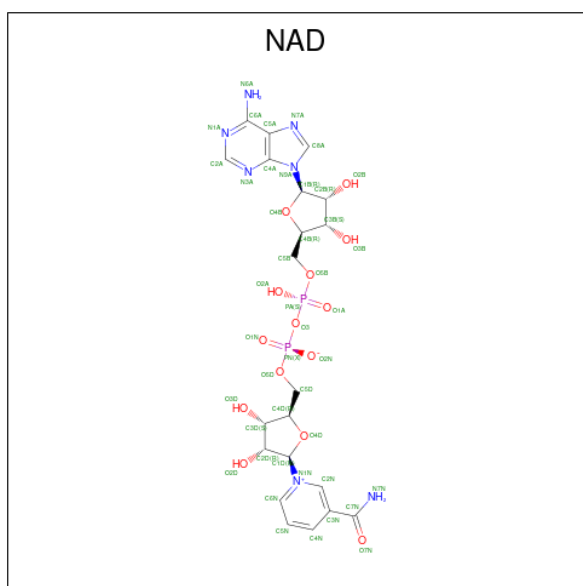
Mol	Chain	Residues	Atoms		ZeroOcc	AltConf
3	A	1	Total	Zn	0	0
			1	1		

- Molecule 4 is ACETYL COENZYME *A (three-letter code: ACO) (formula: C₂₃H₃₈N₇O₁₇P₃S).



Mol	Chain	Residues	Atoms					ZeroOcc	AltConf		
			Total	C	N	O	P			S	
4	A	1	Total	51	23	7	17	3	1	0	0
4	C	1	Total	51	23	7	17	3	1	0	0
4	D	1	Total	51	23	7	17	3	1	0	0

- Molecule 5 is NICOTINAMIDE-ADENINE-DINUCLEOTIDE (three-letter code: NAD) (formula: $C_{21}H_{27}N_7O_{14}P_2$).

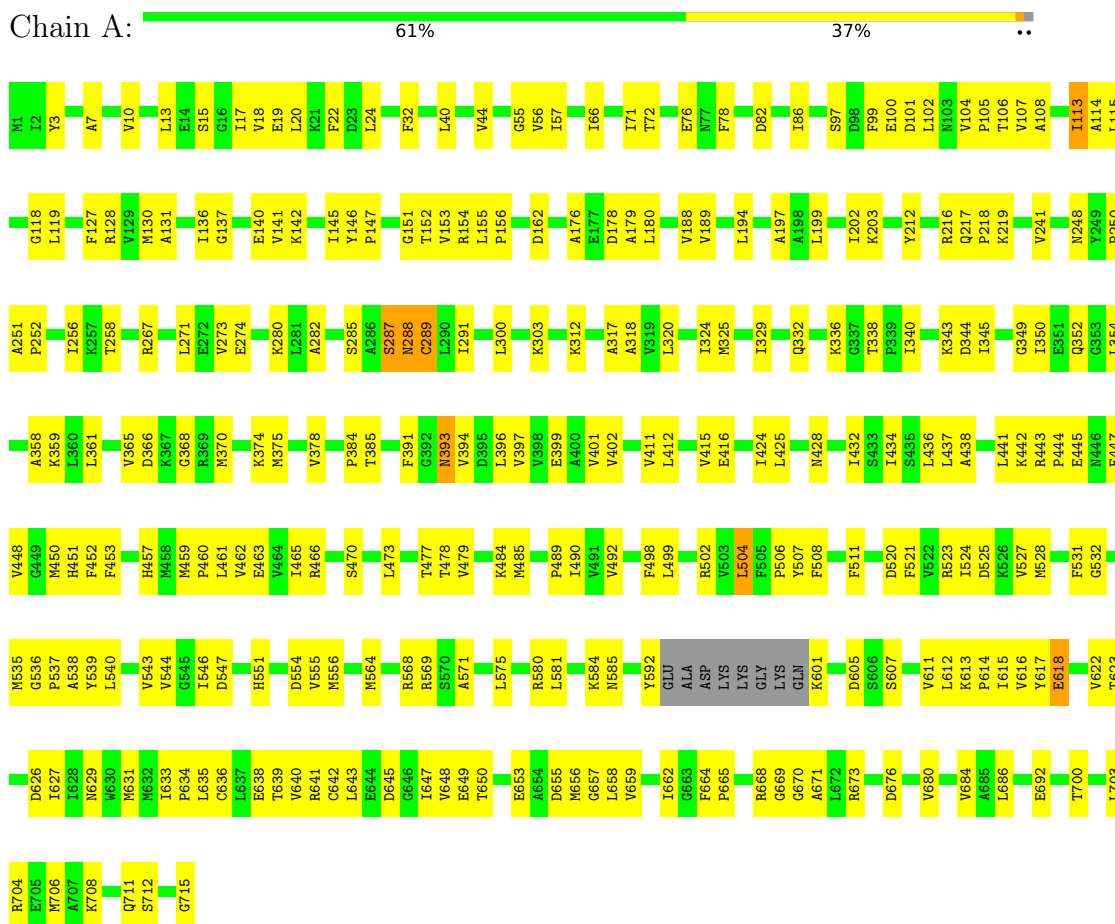


Mol	Chain	Residues	Atoms					ZeroOcc	AltConf
5	A	1	Total 44	C 21	N 7	O 14	P 2	0	0
5	B	1	Total 44	C 21	N 7	O 14	P 2	0	0

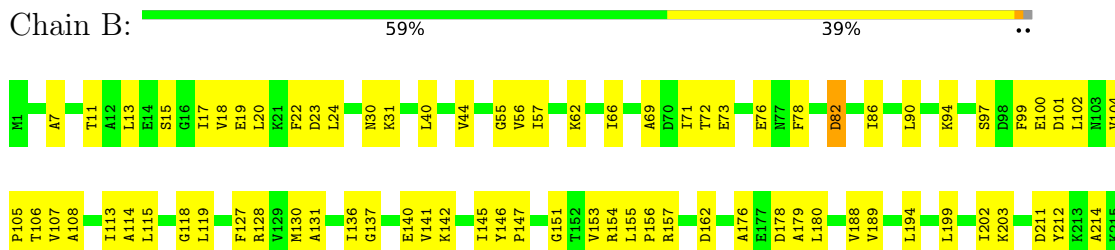
3 Residue-property plots [i](#)

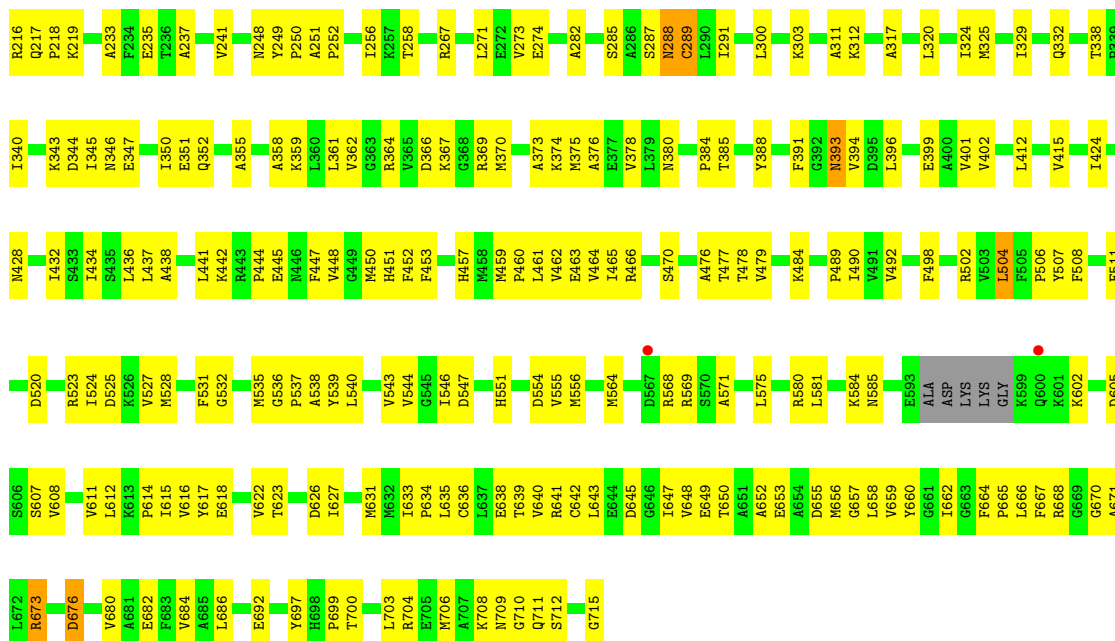
These plots are drawn for all protein, RNA, DNA and oligosaccharide chains in the entry. The first graphic for a chain summarises the proportions of the various outlier classes displayed in the second graphic. The second graphic shows the sequence view annotated by issues in geometry and electron density. Residues are color-coded according to the number of geometric quality criteria for which they contain at least one outlier: green = 0, yellow = 1, orange = 2 and red = 3 or more. A red dot above a residue indicates a poor fit to the electron density ($RSRZ > 2$). Stretches of 2 or more consecutive residues without any outlier are shown as a green connector. Residues present in the sample, but not in the model, are shown in grey.

- Molecule 1: Fatty oxidation complex alpha subunit

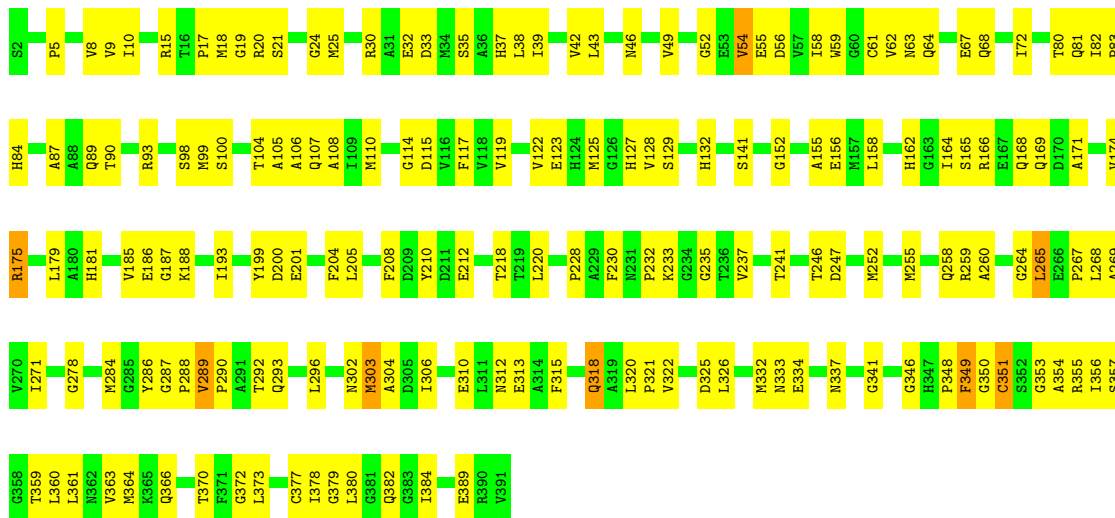


- Molecule 1: Fatty oxidation complex alpha subunit

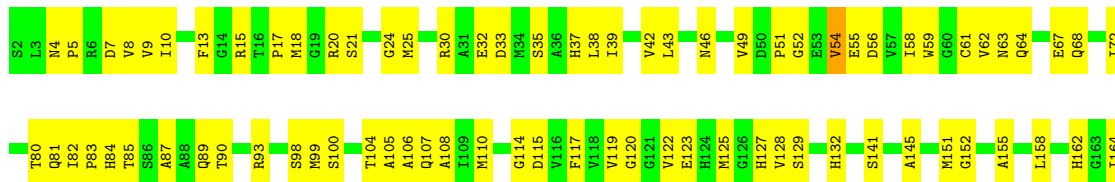


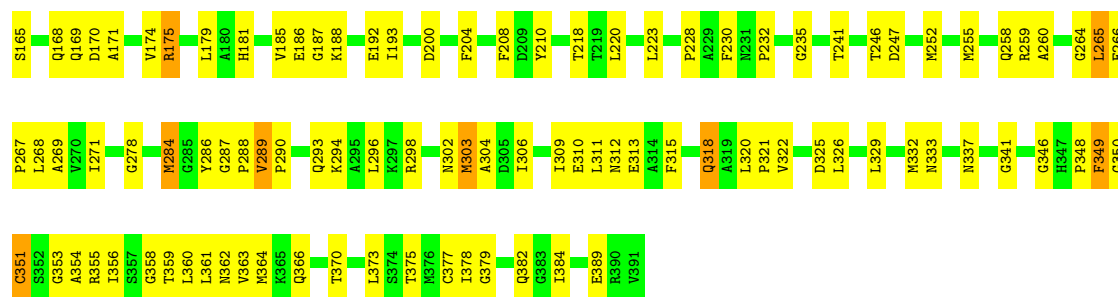


• Molecule 2: 3-ketoacyl-CoA thiolase



• Molecule 2: 3-ketoacyl-CoA thiolase





4 Data and refinement statistics

Property	Value	Source
Space group	C 1 2 1	Depositor
Cell constants a, b, c, α , β , γ	181.45Å 95.46Å 161.32Å 90.00° 111.79° 90.00°	Depositor
Resolution (Å)	20.00 – 3.80 19.99 – 3.80	Depositor EDS
% Data completeness (in resolution range)	(Not available) (20.00-3.80) 98.4 (19.99-3.80)	Depositor EDS
R_{merge}	0.12	Depositor
R_{sym}	(Not available)	Depositor
$\langle I/\sigma(I) \rangle$ ¹	5.39 (at 3.82Å)	Xtrriage
Refinement program	CNS	Depositor
R, R_{free}	0.214 , 0.262 0.184 , 0.229	Depositor DCC
R_{free} test set	1710 reflections (6.87%)	wwPDB-VP
Wilson B-factor (Å ²)	63.5	Xtrriage
Anisotropy	0.272	Xtrriage
Bulk solvent k_{sol} (e/Å ³), B_{sol} (Å ²)	0.26 , 21.1	EDS
L-test for twinning ²	$\langle L \rangle = 0.46$, $\langle L^2 \rangle = 0.29$	Xtrriage
Estimated twinning fraction	No twinning to report.	Xtrriage
F_o, F_c correlation	0.92	EDS
Total number of atoms	16541	wwPDB-VP
Average B, all atoms (Å ²)	23.0	wwPDB-VP

Xtrriage's analysis on translational NCS is as follows: *The largest off-origin peak in the Patterson function is 3.90% of the height of the origin peak. No significant pseudotranslation is detected.*

¹Intensities estimated from amplitudes.

²Theoretical values of $\langle |L| \rangle$, $\langle L^2 \rangle$ for acentric reflections are 0.5, 0.333 respectively for untwinned datasets, and 0.375, 0.2 for perfectly twinned datasets.

5 Model quality [i](#)

5.1 Standard geometry [i](#)

Bond lengths and bond angles in the following residue types are not validated in this section: NAD, ZN, ACO

The Z score for a bond length (or angle) is the number of standard deviations the observed value is removed from the expected value. A bond length (or angle) with $|Z| > 5$ is considered an outlier worth inspection. RMSZ is the root-mean-square of all Z scores of the bond lengths (or angles).

Mol	Chain	Bond lengths		Bond angles	
		RMSZ	# Z >5	RMSZ	# Z >5
1	A	0.29	0/5343	0.51	0/7237
1	B	0.28	0/5388	0.51	0/7291
2	C	0.29	0/2919	0.52	0/3944
2	D	0.30	0/2917	0.52	0/3941
All	All	0.29	0/16567	0.51	0/22413

There are no bond length outliers.

There are no bond angle outliers.

There are no chirality outliers.

There are no planarity outliers.

5.2 Too-close contacts [i](#)

In the following table, the Non-H and H(model) columns list the number of non-hydrogen atoms and hydrogen atoms in the chain respectively. The H(added) column lists the number of hydrogen atoms added and optimized by MolProbity. The Clashes column lists the number of clashes within the asymmetric unit, whereas Symm-Clashes lists symmetry-related clashes.

Mol	Chain	Non-H	H(model)	H(added)	Clashes	Symm-Clashes
1	A	5257	0	5243	217	0
1	B	5302	0	5314	232	0
2	C	2871	0	2848	146	0
2	D	2869	0	2849	152	0
3	A	1	0	0	0	0
4	A	51	0	34	2	0
4	C	51	0	34	0	0
4	D	51	0	34	0	0
5	A	44	0	26	1	0

Continued on next page...

Continued from previous page...

Mol	Chain	Non-H	H(model)	H(added)	Clashes	Symm-Clashes
5	B	44	0	26	1	0
All	All	16541	0	16408	727	0

The all-atom clashscore is defined as the number of clashes found per 1000 atoms (including hydrogen atoms). The all-atom clashscore for this structure is 22.

All (727) close contacts within the same asymmetric unit are listed below, sorted by their clash magnitude.

Atom-1	Atom-2	Interatomic distance (Å)	Clash overlap (Å)
1:A:525:ASP:HB2	1:A:536:GLY:HA3	1.34	1.09
1:B:525:ASP:HB2	1:B:536:GLY:HA3	1.36	1.07
2:D:289:VAL:HG13	2:D:290:PRO:HD3	1.55	0.87
2:D:98:SER:HB3	2:D:353:GLY:HA3	1.59	0.85
1:B:130:MET:HE1	1:B:176:ALA:HA	1.57	0.84
1:B:401:VAL:HG12	1:B:402:VAL:H	1.42	0.84
2:D:125:MET:HE2	2:D:348:PRO:HA	1.57	0.83
2:C:289:VAL:HG13	2:C:290:PRO:HD3	1.60	0.83
1:B:673:ARG:HB2	1:B:673:ARG:HH11	1.43	0.82
2:C:125:MET:HE2	2:C:348:PRO:HA	1.62	0.82
1:A:401:VAL:HG12	1:A:402:VAL:H	1.45	0.81
2:C:378:ILE:HB	2:C:382:GLN:HB2	1.62	0.80
1:A:71:ILE:HD11	1:A:291:ILE:HG23	1.64	0.80
2:C:287:GLY:O	2:C:290:PRO:HD2	1.80	0.80
2:D:306:ILE:HD13	2:D:373:LEU:HB2	1.63	0.79
2:D:378:ILE:HB	2:D:382:GLN:HB2	1.66	0.77
1:A:251:ALA:HB3	1:A:252:PRO:HD3	1.67	0.76
1:B:71:ILE:HD11	1:B:291:ILE:HG23	1.66	0.76
1:A:343:LYS:HD3	1:A:344:ASP:N	2.01	0.76
1:A:416:GLU:OE1	1:A:442:LYS:HG2	1.85	0.76
2:D:287:GLY:O	2:D:290:PRO:HD2	1.85	0.76
2:C:98:SER:HB3	2:C:353:GLY:HA3	1.67	0.76
1:B:361:LEU:HD21	1:B:378:VAL:HG11	1.67	0.75
1:A:581:LEU:HB2	1:A:585:ASN:HB2	1.69	0.74
1:A:113:ILE:H	1:A:113:ILE:CD1	2.01	0.74
1:B:343:LYS:HD3	1:B:344:ASP:N	2.02	0.73
2:C:8:VAL:HG21	2:C:106:ALA:HB1	1.69	0.73
2:D:80:THR:HG22	2:D:81:GLN:H	1.53	0.73
1:B:241:VAL:HG21	1:B:256:ILE:HD11	1.72	0.72
1:B:251:ALA:HB3	1:B:252:PRO:HD3	1.69	0.72
1:B:581:LEU:HB2	1:B:585:ASN:HB2	1.71	0.72
1:A:361:LEU:HD21	1:A:378:VAL:HG11	1.71	0.72

Continued on next page...

Continued from previous page...

Atom-1	Atom-2	Interatomic distance (Å)	Clash overlap (Å)
2:C:306:ILE:HD13	2:C:373:LEU:HB2	1.71	0.72
1:A:350:ILE:HG21	1:A:384:PRO:HB3	1.72	0.71
2:D:43:LEU:HD11	2:D:82:ILE:HD11	1.71	0.71
1:A:241:VAL:HG21	1:A:256:ILE:HD11	1.71	0.71
1:A:130:MET:HE1	1:A:176:ALA:HA	1.72	0.70
1:A:199:LEU:HD11	1:A:203:LYS:HE3	1.73	0.70
2:C:296:LEU:HD21	2:C:306:ILE:HD11	1.72	0.70
2:D:8:VAL:HG21	2:D:106:ALA:HB1	1.72	0.70
1:A:450:MET:HG2	1:A:452:PHE:CE1	2.26	0.69
1:A:504:LEU:HD13	4:A:1002:ACO:HH33	1.73	0.69
1:B:130:MET:CE	1:B:176:ALA:HA	2.22	0.69
2:D:152:GLY:HA3	2:D:230:PHE:CE2	2.27	0.69
1:A:673:ARG:HH11	1:A:673:ARG:HB2	1.55	0.69
2:C:46:ASN:O	2:C:49:VAL:HG22	1.92	0.69
1:B:325:MET:HE2	1:B:428:ASN:HD21	1.55	0.69
1:B:350:ILE:HG21	1:B:384:PRO:HB3	1.75	0.69
2:C:55:GLU:HG3	2:C:114:GLY:HA2	1.74	0.69
1:A:401:VAL:HG12	1:A:402:VAL:N	2.06	0.69
1:B:546:ILE:HD12	1:B:546:ILE:H	1.58	0.69
2:C:80:THR:HG22	2:C:81:GLN:H	1.57	0.69
1:A:180:LEU:HD23	1:A:180:LEU:O	1.93	0.69
1:B:450:MET:HG2	1:B:452:PHE:CE1	2.28	0.69
2:C:43:LEU:HD11	2:C:82:ILE:HD11	1.75	0.69
1:A:108:ALA:HB3	1:A:128:ARG:HG2	1.74	0.68
2:C:188:LYS:HD3	2:C:366:GLN:OE1	1.94	0.68
1:B:401:VAL:HG12	1:B:402:VAL:N	2.07	0.68
1:A:546:ILE:HD12	1:A:546:ILE:H	1.57	0.67
1:A:113:ILE:N	1:A:113:ILE:HD12	2.09	0.67
1:A:130:MET:CE	1:A:176:ALA:HA	2.24	0.67
1:A:320:LEU:HD11	1:A:415:VAL:HG21	1.76	0.67
2:C:289:VAL:HG23	2:C:293:GLN:HE21	1.59	0.67
2:D:55:GLU:HG3	2:D:114:GLY:HA2	1.77	0.67
2:D:289:VAL:HG23	2:D:293:GLN:HE21	1.59	0.67
1:B:320:LEU:HD11	1:B:415:VAL:HG21	1.77	0.67
2:C:54:VAL:HG21	2:C:82:ILE:HD12	1.76	0.67
1:B:199:LEU:HD11	1:B:203:LYS:HE3	1.76	0.66
2:D:152:GLY:HA3	2:D:230:PHE:CD2	2.30	0.66
2:D:348:PRO:HB2	2:D:351:CYS:HB3	1.77	0.66
2:D:98:SER:HB3	2:D:353:GLY:CA	2.26	0.66
1:A:113:ILE:H	1:A:113:ILE:HD12	1.61	0.66
2:C:255:MET:HE3	2:C:259:ARG:HG3	1.78	0.66

Continued on next page...

Continued from previous page...

Atom-1	Atom-2	Interatomic distance (Å)	Clash overlap (Å)
1:B:153:VAL:HG21	1:B:271:LEU:HD23	1.77	0.65
1:B:108:ALA:HB3	1:B:128:ARG:HG2	1.77	0.65
1:B:539:TYR:O	1:B:543:VAL:HG23	1.96	0.65
2:D:54:VAL:HG21	2:D:82:ILE:HD12	1.79	0.65
2:C:89:GLN:HB3	2:D:93:ARG:NH1	2.11	0.65
1:A:56:VAL:HB	1:A:106:THR:HG22	1.77	0.65
1:B:325:MET:CE	1:B:428:ASN:HD21	2.08	0.65
2:D:21:SER:HA	2:D:247:ASP:OD2	1.96	0.65
1:A:546:ILE:HD12	1:A:546:ILE:N	2.11	0.65
1:B:180:LEU:O	1:B:180:LEU:HD23	1.96	0.65
1:B:502:ARG:NH1	1:B:647:ILE:HG12	2.12	0.64
1:B:706:MET:HB2	1:B:711:GLN:HB2	1.80	0.64
2:D:98:SER:HB2	2:D:350:GLY:O	1.98	0.64
2:C:35:SER:O	2:C:39:ILE:HG13	1.97	0.64
1:B:300:LEU:HD11	1:B:656:MET:HG3	1.80	0.64
2:C:63:ASN:HB3	2:C:128:VAL:HG11	1.80	0.64
2:D:46:ASN:O	2:D:49:VAL:HG22	1.96	0.64
1:A:424:ILE:HD12	1:A:424:ILE:N	2.13	0.63
2:C:9:VAL:HG13	2:C:267:PRO:HB3	1.80	0.63
1:B:113:ILE:HD13	1:B:113:ILE:N	2.14	0.63
1:B:303:LYS:HE3	1:B:650:THR:HG21	1.80	0.63
1:A:592:TYR:HA	1:A:601:LYS:O	1.99	0.63
2:D:9:VAL:HG13	2:D:267:PRO:HB3	1.80	0.63
1:B:525:ASP:CB	1:B:536:GLY:HA3	2.22	0.62
1:B:631:MET:O	1:B:634:PRO:HD2	1.99	0.62
1:B:285:SER:O	1:B:289:CYS:HB2	1.98	0.62
1:B:622:VAL:CG2	1:B:626:ASP:HB2	2.29	0.62
2:C:246:THR:OG1	2:C:346:GLY:HA3	1.98	0.62
1:A:633:ILE:HB	1:A:634:PRO:HD3	1.80	0.62
1:A:525:ASP:CB	1:A:536:GLY:HA3	2.20	0.62
2:C:348:PRO:HB2	2:C:351:CYS:HB3	1.82	0.62
1:A:189:VAL:HG21	1:A:194:LEU:HA	1.82	0.62
1:A:706:MET:HB2	1:A:711:GLN:HB2	1.80	0.62
2:C:87:ALA:HB1	2:D:93:ARG:HH21	1.64	0.61
1:B:424:ILE:HD12	1:B:424:ILE:N	2.14	0.61
2:C:58:ILE:HD12	2:C:105:ALA:HB2	1.81	0.61
2:D:188:LYS:HD2	2:D:366:GLN:OE1	2.01	0.61
1:A:465:ILE:N	1:A:465:ILE:HD12	2.15	0.61
1:B:56:VAL:HB	1:B:106:THR:HG22	1.82	0.61
2:C:18:MET:HB3	2:C:246:THR:HG21	1.81	0.61
2:D:35:SER:O	2:D:39:ILE:HG13	2.00	0.61

Continued on next page...

Continued from previous page...

Atom-1	Atom-2	Interatomic distance (Å)	Clash overlap (Å)
2:D:296:LEU:HD21	2:D:306:ILE:HD11	1.82	0.61
1:A:40:LEU:HD23	1:A:40:LEU:O	2.01	0.61
2:C:152:GLY:HA3	2:C:230:PHE:CE2	2.36	0.61
1:B:288:ASN:N	1:B:288:ASN:HD22	1.97	0.61
2:C:265:LEU:N	2:C:265:LEU:HD23	2.16	0.61
1:A:546:ILE:H	1:A:546:ILE:CD1	2.13	0.61
2:D:18:MET:HB3	2:D:246:THR:HG21	1.83	0.61
1:B:546:ILE:HD12	1:B:546:ILE:N	2.16	0.60
2:D:58:ILE:HD12	2:D:105:ALA:HB2	1.83	0.60
2:C:21:SER:HA	2:C:247:ASP:OD2	2.01	0.60
1:A:82:ASP:O	1:A:86:ILE:HG13	2.01	0.60
2:C:174:VAL:HG22	2:C:218:THR:HG22	1.81	0.60
1:A:537:PRO:HG2	1:A:631:MET:CE	2.32	0.60
1:B:155:LEU:HB3	1:B:156:PRO:HD3	1.84	0.60
1:A:465:ILE:HG12	1:A:498:PHE:CE2	2.37	0.60
1:B:622:VAL:HG23	1:B:626:ASP:HB2	1.84	0.60
1:B:673:ARG:HB2	1:B:673:ARG:NH1	2.17	0.60
1:A:40:LEU:HD23	1:A:44:VAL:HG23	1.84	0.60
1:A:285:SER:O	1:A:289:CYS:HB2	2.01	0.60
2:D:62:VAL:HG21	2:D:349:PHE:HB3	1.83	0.60
2:D:175:ARG:NE	2:D:179:LEU:HD12	2.16	0.60
1:B:22:PHE:CD2	1:B:66:ILE:HD11	2.37	0.59
1:B:105:PRO:HG3	1:B:212:TYR:CD2	2.37	0.59
1:A:680:VAL:O	1:A:684:VAL:HG23	2.01	0.59
1:A:97:SER:HB3	1:A:267:ARG:NH1	2.18	0.59
1:B:40:LEU:HD23	1:B:44:VAL:HG23	1.84	0.59
2:C:315:PHE:O	2:C:318:GLN:HG3	2.02	0.59
2:C:20:ARG:O	2:C:24:GLY:HA3	2.02	0.59
2:D:246:THR:OG1	2:D:346:GLY:HA3	2.02	0.59
1:A:622:VAL:CG2	1:A:626:ASP:HB2	2.33	0.59
2:D:255:MET:HE3	2:D:259:ARG:HG3	1.85	0.59
1:B:465:ILE:HG12	1:B:498:PHE:CE2	2.38	0.59
2:C:93:ARG:HH21	2:D:87:ALA:HB1	1.66	0.58
1:B:40:LEU:HD23	1:B:40:LEU:O	2.02	0.58
1:B:668:ARG:HH11	1:B:668:ARG:HG2	1.67	0.58
2:C:106:ALA:O	2:C:110:MET:HG3	2.03	0.58
2:D:313:GLU:CD	2:D:341:GLY:HA3	2.23	0.58
2:C:30:ARG:HB2	2:C:33:ASP:OD2	2.03	0.58
2:C:62:VAL:HG21	2:C:349:PHE:HB3	1.84	0.58
1:A:101:ASP:CG	1:A:267:ARG:HH22	2.05	0.58
1:A:338:THR:OG1	1:A:484:LYS:HE3	2.03	0.58

Continued on next page...

Continued from previous page...

Atom-1	Atom-2	Interatomic distance (Å)	Clash overlap (Å)
2:C:98:SER:HB2	2:C:350:GLY:O	2.04	0.58
1:A:361:LEU:HB3	1:A:375:MET:HG3	1.86	0.58
1:B:399:GLU:HG2	1:B:401:VAL:HG23	1.84	0.58
1:A:55:GLY:HA2	1:A:104:VAL:HG13	1.84	0.57
2:D:63:ASN:HB3	2:D:128:VAL:HG11	1.86	0.57
2:D:265:LEU:HD23	2:D:265:LEU:N	2.19	0.57
1:B:249:TYR:OH	1:B:666:LEU:HB2	2.04	0.57
2:D:329:LEU:HD23	2:D:329:LEU:O	2.04	0.57
1:A:631:MET:O	1:A:634:PRO:HD2	2.05	0.57
1:B:338:THR:OG1	1:B:484:LYS:HE3	2.04	0.57
1:B:461:LEU:HD12	1:B:462:VAL:H	1.69	0.57
1:B:465:ILE:HD12	1:B:465:ILE:N	2.20	0.57
1:B:649:GLU:HB3	1:B:653:GLU:OE1	2.05	0.57
1:A:673:ARG:HB2	1:A:673:ARG:NH1	2.20	0.57
1:B:645:ASP:HB2	1:B:647:ILE:HD13	1.86	0.57
1:B:537:PRO:HG2	1:B:631:MET:CE	2.35	0.57
2:D:38:LEU:O	2:D:42:VAL:HG23	2.05	0.57
1:A:399:GLU:HG2	1:A:401:VAL:HG23	1.87	0.56
2:C:98:SER:HB3	2:C:353:GLY:CA	2.32	0.56
1:B:465:ILE:HG12	1:B:498:PHE:CZ	2.40	0.56
2:C:152:GLY:HA3	2:C:230:PHE:CD2	2.39	0.56
2:D:359:THR:O	2:D:363:VAL:HG23	2.05	0.56
1:A:155:LEU:HB3	1:A:156:PRO:HD3	1.85	0.56
1:A:704:ARG:O	1:A:708:LYS:HG3	2.05	0.56
1:B:99:PHE:HA	1:B:102:LEU:HD13	1.86	0.56
1:B:140:GLU:HB2	1:B:146:TYR:HA	1.86	0.56
2:C:61:CYS:SG	2:C:68:GLN:HB3	2.46	0.56
1:B:684:VAL:HG22	1:B:703:LEU:HD22	1.88	0.56
2:D:10:ILE:N	2:D:10:ILE:HD12	2.19	0.56
2:D:33:ASP:O	2:D:37:HIS:HB2	2.06	0.56
1:A:146:TYR:HB2	1:A:147:PRO:HD2	1.87	0.56
2:C:38:LEU:O	2:C:42:VAL:HG23	2.04	0.56
2:D:17:PRO:HB2	2:D:25:MET:CE	2.35	0.56
2:D:320:LEU:HB2	2:D:321:PRO:HD3	1.86	0.56
2:C:125:MET:HE3	2:C:246:THR:N	2.20	0.56
1:A:288:ASN:N	1:A:288:ASN:HD22	2.04	0.56
1:A:523:ARG:O	1:A:527:VAL:HG23	2.06	0.56
1:B:569:ARG:O	1:B:615:ILE:HD12	2.06	0.56
2:D:80:THR:HG22	2:D:81:GLN:N	2.20	0.56
1:B:107:VAL:HG22	1:B:127:PHE:HB2	1.88	0.55
2:C:360:LEU:HG	2:C:364:MET:HE1	1.89	0.55

Continued on next page...

Continued from previous page...

Atom-1	Atom-2	Interatomic distance (Å)	Clash overlap (Å)
2:D:361:LEU:HD23	2:D:364:MET:HE3	1.87	0.55
1:B:502:ARG:HA	1:B:556:MET:CE	2.36	0.55
2:C:17:PRO:HB3	2:C:210:TYR:O	2.06	0.55
2:D:93:ARG:HD2	2:D:100:SER:OG	2.06	0.55
1:A:712:SER:OG	1:A:715:GLY:HA3	2.07	0.55
2:C:320:LEU:HB2	2:C:321:PRO:HD3	1.87	0.55
2:D:17:PRO:HB3	2:D:210:TYR:O	2.07	0.55
1:A:676:ASP:OD2	1:A:712:SER:HB2	2.07	0.55
1:B:40:LEU:O	1:B:44:VAL:HG23	2.07	0.55
1:B:180:LEU:HD12	1:B:188:VAL:HG23	1.88	0.55
2:C:181:HIS:O	2:C:185:VAL:HG23	2.07	0.55
2:D:125:MET:HE3	2:D:246:THR:N	2.21	0.55
1:A:502:ARG:NH1	1:A:647:ILE:HG12	2.22	0.55
1:A:686:LEU:O	1:A:686:LEU:HD23	2.06	0.55
2:C:52:GLY:HA2	2:C:83:PRO:HG2	1.87	0.55
1:A:401:VAL:CG1	1:A:402:VAL:H	2.19	0.55
1:B:546:ILE:H	1:B:546:ILE:CD1	2.19	0.55
2:C:67:GLU:OE2	2:C:127:HIS:HB3	2.07	0.55
2:D:67:GLU:OE2	2:D:127:HIS:HB3	2.07	0.55
1:B:101:ASP:CG	1:B:267:ARG:HH22	2.10	0.55
1:B:680:VAL:O	1:B:684:VAL:HG23	2.07	0.55
1:A:525:ASP:OD2	1:A:538:ALA:HB3	2.07	0.54
1:A:547:ASP:OD2	1:A:584:LYS:HD2	2.08	0.54
1:B:66:ILE:O	1:B:118:GLY:HA3	2.07	0.54
2:D:286:TYR:O	2:D:289:VAL:HG13	2.06	0.54
1:B:347:GLU:O	1:B:351:GLU:HG2	2.08	0.54
1:B:464:VAL:HG21	1:B:479:VAL:HG22	1.89	0.54
2:C:313:GLU:CD	2:C:341:GLY:HA3	2.26	0.54
1:A:130:MET:HE1	1:A:179:ALA:HB3	1.90	0.54
1:B:140:GLU:HG3	1:B:147:PRO:N	2.22	0.54
1:B:504:LEU:HG	1:B:662:ILE:HD11	1.90	0.54
2:C:30:ARG:NH1	2:C:32:GLU:OE1	2.41	0.54
1:A:66:ILE:O	1:A:118:GLY:HA3	2.08	0.54
1:A:140:GLU:HB2	1:A:146:TYR:HA	1.89	0.54
1:A:520:ASP:O	1:A:524:ILE:HG13	2.07	0.54
1:B:130:MET:HE1	1:B:179:ALA:HB3	1.89	0.54
2:C:10:ILE:HD12	2:C:10:ILE:N	2.23	0.54
2:C:255:MET:HE1	2:C:260:ALA:HA	1.88	0.54
2:D:59:TRP:CZ3	2:D:120:GLY:HA3	2.42	0.54
2:D:165:SER:OG	2:D:168:GLN:HG3	2.07	0.54
1:A:40:LEU:O	1:A:44:VAL:HG23	2.07	0.54

Continued on next page...

Continued from previous page...

Atom-1	Atom-2	Interatomic distance (Å)	Clash overlap (Å)
2:C:33:ASP:O	2:C:37:HIS:HB2	2.06	0.54
1:A:668:ARG:HG2	1:A:668:ARG:HH11	1.72	0.54
1:B:623:THR:O	1:B:627:ILE:HG13	2.08	0.54
2:D:20:ARG:O	2:D:24:GLY:HA3	2.06	0.54
1:A:490:ILE:HD12	1:A:657:GLY:HA2	1.90	0.54
1:B:525:ASP:OD2	1:B:538:ALA:HB3	2.07	0.54
1:A:300:LEU:HD11	1:A:656:MET:HG3	1.89	0.54
1:B:686:LEU:HD23	1:B:686:LEU:O	2.07	0.53
2:D:181:HIS:O	2:D:185:VAL:HG23	2.08	0.53
2:D:246:THR:HB	2:D:348:PRO:HG3	1.90	0.53
1:A:22:PHE:CD2	1:A:66:ILE:HD11	2.44	0.53
1:B:146:TYR:HB2	1:B:147:PRO:HD2	1.90	0.53
2:C:246:THR:HB	2:C:348:PRO:HG3	1.90	0.53
2:D:58:ILE:HB	2:D:119:VAL:HG12	1.91	0.53
1:B:31:LYS:HB2	1:B:69:ALA:HA	1.91	0.53
2:D:106:ALA:O	2:D:110:MET:HG3	2.09	0.53
1:B:13:LEU:HD11	1:B:19:GLU:HB2	1.91	0.53
1:B:55:GLY:HA2	1:B:104:VAL:HG13	1.89	0.53
2:D:318:GLN:O	2:D:322:VAL:HG23	2.08	0.53
1:B:523:ARG:NH2	1:B:627:ILE:HD11	2.24	0.53
2:C:359:THR:O	2:C:363:VAL:HG23	2.09	0.53
1:A:506:PRO:HG3	1:A:564:MET:CE	2.39	0.53
1:B:535:MET:SD	1:B:543:VAL:HG21	2.49	0.53
1:B:658:LEU:O	1:B:662:ILE:HG22	2.09	0.53
1:A:412:LEU:HB3	1:A:441:LEU:HD21	1.91	0.52
1:A:537:PRO:HG2	1:A:631:MET:HE2	1.90	0.52
1:A:539:TYR:O	1:A:543:VAL:HG23	2.09	0.52
1:A:611:VAL:O	1:A:614:PRO:HD2	2.09	0.52
1:B:343:LYS:HD3	1:B:344:ASP:H	1.73	0.52
1:A:465:ILE:HA	1:A:492:VAL:O	2.09	0.52
2:C:93:ARG:HD2	2:C:100:SER:OG	2.10	0.52
1:A:194:LEU:O	1:A:194:LEU:HD23	2.10	0.52
1:A:280:LYS:HB2	1:A:280:LYS:NZ	2.25	0.52
2:C:58:ILE:HB	2:C:119:VAL:HG12	1.92	0.52
1:A:622:VAL:HG23	1:A:626:ASP:HB2	1.91	0.52
1:B:465:ILE:HA	1:B:492:VAL:O	2.09	0.52
2:D:52:GLY:HA2	2:D:83:PRO:HG2	1.90	0.52
1:B:401:VAL:CG1	1:B:402:VAL:H	2.19	0.52
2:C:122:VAL:HG22	2:C:123:GLU:N	2.25	0.52
2:C:286:TYR:CE1	2:C:289:VAL:HG11	2.45	0.52
2:D:315:PHE:O	2:D:318:GLN:HG3	2.09	0.52

Continued on next page...

Continued from previous page...

Atom-1	Atom-2	Interatomic distance (Å)	Clash overlap (Å)
1:A:147:PRO:HB3	1:A:151:GLY:HA3	1.92	0.52
1:B:72:THR:O	1:B:76:GLU:HG3	2.09	0.52
1:A:180:LEU:HD12	1:A:188:VAL:HG23	1.93	0.51
1:B:147:PRO:HB3	1:B:151:GLY:HA3	1.92	0.51
2:C:59:TRP:HE1	2:C:122:VAL:HB	1.75	0.51
1:B:189:VAL:HG21	1:B:194:LEU:HA	1.92	0.51
2:C:252:MET:CE	2:C:354:ALA:HB1	2.40	0.51
2:C:292:THR:HG23	2:C:373:LEU:HD21	1.92	0.51
1:A:571:ALA:HB1	1:A:612:LEU:HD22	1.93	0.51
1:B:391:PHE:HA	1:B:394:VAL:HG23	1.91	0.51
1:B:633:ILE:HB	1:B:634:PRO:HD3	1.90	0.51
2:C:360:LEU:HG	2:C:364:MET:CE	2.39	0.51
2:D:175:ARG:HE	2:D:179:LEU:HD12	1.75	0.51
1:A:317:ALA:O	1:A:340:ILE:HA	2.10	0.51
1:B:312:LYS:O	1:B:477:THR:HG23	2.10	0.51
2:D:228:PRO:HB3	2:D:235:GLY:HA3	1.92	0.51
2:D:286:TYR:CZ	2:D:289:VAL:HG11	2.46	0.51
2:D:125:MET:HE3	2:D:246:THR:H	1.76	0.51
1:A:568:ARG:HD2	1:A:617:TYR:CE1	2.46	0.51
1:A:613:LYS:HB3	1:A:614:PRO:HD3	1.91	0.51
1:A:684:VAL:HG22	1:A:703:LEU:HD22	1.92	0.51
1:B:57:ILE:HG12	1:B:202:ILE:HG13	1.91	0.51
1:A:32:PHE:CE1	1:A:66:ILE:HG21	2.45	0.51
2:D:174:VAL:HG22	2:D:218:THR:HG22	1.93	0.51
1:B:448:VAL:HG12	1:B:470:SER:HB3	1.92	0.51
2:C:318:GLN:C	2:C:321:PRO:HD2	2.31	0.51
1:A:99:PHE:HA	1:A:102:LEU:HD13	1.93	0.51
1:A:391:PHE:HA	1:A:394:VAL:HG23	1.93	0.51
1:A:465:ILE:HG12	1:A:498:PHE:CZ	2.46	0.51
1:B:113:ILE:HD13	1:B:113:ILE:H	1.74	0.51
1:B:568:ARG:HD2	1:B:617:TYR:CE1	2.46	0.51
2:C:312:ASN:HB2	2:C:356:ILE:HD13	1.93	0.51
1:A:374:LYS:O	1:A:378:VAL:HG23	2.11	0.51
1:B:502:ARG:HA	1:B:556:MET:HE1	1.93	0.51
1:B:708:LYS:C	1:B:710:GLY:H	2.13	0.51
1:A:504:LEU:O	1:A:507:TYR:HB3	2.11	0.50
1:A:436:LEU:HD23	1:A:436:LEU:O	2.11	0.50
2:C:80:THR:HG22	2:C:81:GLN:N	2.24	0.50
1:A:72:THR:O	1:A:76:GLU:HG3	2.11	0.50
1:B:237:ALA:O	1:B:241:VAL:HG23	2.10	0.50
1:A:461:LEU:HD12	1:A:462:VAL:H	1.75	0.50

Continued on next page...

Continued from previous page...

Atom-1	Atom-2	Interatomic distance (Å)	Clash overlap (Å)
1:A:643:LEU:HD23	1:A:643:LEU:O	2.12	0.50
1:B:451:HIS:HB3	1:B:463:GLU:HB2	1.93	0.50
2:C:93:ARG:NH1	2:D:89:GLN:HB3	2.26	0.50
2:C:310:GLU:OE2	2:C:337:ASN:HA	2.12	0.50
2:D:192:GLU:HB3	2:D:362:ASN:ND2	2.27	0.50
1:A:13:LEU:HD11	1:A:19:GLU:HB2	1.93	0.50
1:A:194:LEU:HD23	1:A:194:LEU:C	2.32	0.50
2:C:171:ALA:HA	2:C:220:LEU:HD21	1.92	0.50
1:A:57:ILE:HG12	1:A:202:ILE:HG13	1.93	0.50
1:B:105:PRO:HG3	1:B:212:TYR:CE2	2.47	0.50
1:B:479:VAL:HG13	1:B:489:PRO:CG	2.42	0.50
1:A:645:ASP:HB2	1:A:647:ILE:HD13	1.93	0.50
1:B:194:LEU:HD23	1:B:194:LEU:O	2.12	0.50
2:D:169:GLN:HB3	2:D:241:THR:HG21	1.94	0.50
1:A:199:LEU:CD1	1:A:203:LYS:HE3	2.42	0.49
1:A:647:ILE:HG22	1:A:648:VAL:HG23	1.94	0.49
1:B:154:ARG:HD3	1:B:219:LYS:HD2	1.93	0.49
1:B:547:ASP:HB3	1:B:581:LEU:HD22	1.94	0.49
1:B:622:VAL:HG22	1:B:623:THR:O	2.12	0.49
1:B:643:LEU:O	1:B:643:LEU:HD23	2.12	0.49
2:D:255:MET:HE1	2:D:260:ALA:HA	1.94	0.49
1:B:350:ILE:HD11	1:B:385:THR:O	2.13	0.49
1:B:358:ALA:O	1:B:362:VAL:HG23	2.12	0.49
1:B:504:LEU:O	1:B:507:TYR:HB3	2.12	0.49
2:C:129:SER:OG	2:C:132:HIS:HB2	2.13	0.49
2:C:200:ASP:OD2	2:C:204:PHE:HB2	2.12	0.49
1:A:636:CYS:O	1:A:640:VAL:HG23	2.12	0.49
2:C:99:MET:HB3	2:C:384:ILE:HD13	1.95	0.49
2:C:105:ALA:O	2:C:108:ALA:HB3	2.13	0.49
2:C:175:ARG:NE	2:C:179:LEU:HD12	2.27	0.49
1:A:217:GLN:HB3	1:A:218:PRO:HD3	1.94	0.49
2:C:185:VAL:C	2:C:187:GLY:H	2.16	0.49
2:D:122:VAL:HG22	2:D:123:GLU:N	2.28	0.49
1:A:7:ALA:HA	1:A:24:LEU:HA	1.95	0.49
1:A:448:VAL:HG21	1:A:478:THR:OG1	2.13	0.49
1:A:623:THR:O	1:A:627:ILE:HG13	2.13	0.49
1:B:668:ARG:HG2	1:B:668:ARG:NH1	2.28	0.49
1:A:325:MET:O	1:A:329:ILE:HG13	2.13	0.49
1:B:82:ASP:O	1:B:86:ILE:HG13	2.13	0.48
1:B:345:ILE:HG13	1:B:346:ASN:N	2.27	0.48
1:B:361:LEU:HB3	1:B:375:MET:HG3	1.94	0.48

Continued on next page...

Continued from previous page...

Atom-1	Atom-2	Interatomic distance (Å)	Clash overlap (Å)
2:C:125:MET:HE3	2:C:246:THR:H	1.76	0.48
2:D:312:ASN:HB2	2:D:356:ILE:HD13	1.95	0.48
1:A:312:LYS:O	1:A:477:THR:HG23	2.13	0.48
1:B:248:ASN:O	1:B:250:PRO:HD3	2.13	0.48
1:B:700:THR:OG1	1:B:703:LEU:HB2	2.13	0.48
1:A:105:PRO:HG3	1:A:212:TYR:CD2	2.48	0.48
1:A:303:LYS:HE3	1:A:650:THR:HG21	1.94	0.48
1:A:451:HIS:HB3	1:A:463:GLU:HB2	1.95	0.48
1:B:436:LEU:O	1:B:436:LEU:HD23	2.13	0.48
2:C:348:PRO:O	2:C:349:PHE:C	2.51	0.48
1:A:130:MET:HE1	1:A:179:ALA:CB	2.43	0.48
1:B:271:LEU:O	1:B:274:GLU:HB3	2.14	0.48
1:B:520:ASP:O	1:B:524:ILE:HG13	2.13	0.48
2:C:286:TYR:O	2:C:289:VAL:HG13	2.12	0.48
1:A:401:VAL:CG1	1:A:402:VAL:N	2.76	0.48
1:B:652:ALA:O	1:B:656:MET:HG2	2.13	0.48
2:D:302:ASN:O	2:D:304:ALA:N	2.46	0.48
2:D:348:PRO:O	2:D:349:PHE:C	2.51	0.48
1:A:350:ILE:HD11	1:A:385:THR:O	2.14	0.48
1:A:605:ASP:OD2	1:A:607:SER:OG	2.32	0.48
1:B:288:ASN:N	1:B:288:ASN:ND2	2.60	0.48
1:B:388:TYR:HE2	1:B:415:VAL:HG22	1.78	0.48
2:C:302:ASN:O	2:C:304:ALA:N	2.47	0.48
2:D:370:THR:O	2:D:389:GLU:HA	2.13	0.48
1:A:78:PHE:CD1	1:A:282:ALA:HB1	2.48	0.48
2:C:286:TYR:CZ	2:C:289:VAL:HG11	2.49	0.48
2:D:123:GLU:HG2	2:D:349:PHE:HB2	1.95	0.48
2:D:171:ALA:HA	2:D:220:LEU:HD21	1.94	0.48
1:A:271:LEU:O	1:A:274:GLU:HB3	2.14	0.48
1:B:114:ALA:HB3	1:B:136:ILE:HG22	1.96	0.48
1:B:374:LYS:O	1:B:378:VAL:HG23	2.13	0.48
1:B:285:SER:HA	1:B:288:ASN:HD21	1.79	0.48
1:B:448:VAL:HG21	1:B:478:THR:OG1	2.13	0.48
2:C:8:VAL:HG11	2:C:271:ILE:HD12	1.96	0.48
2:D:129:SER:OG	2:D:132:HIS:HB2	2.14	0.48
1:B:20:LEU:HD23	1:B:20:LEU:C	2.35	0.47
1:B:393:ASN:HD22	1:B:393:ASN:C	2.17	0.47
2:C:370:THR:O	2:C:389:GLU:HA	2.14	0.47
1:B:199:LEU:CD1	1:B:203:LYS:HE3	2.43	0.47
1:B:317:ALA:O	1:B:340:ILE:HA	2.14	0.47
2:C:25:MET:HG2	2:C:212:GLU:OE1	2.13	0.47

Continued on next page...

Continued from previous page...

Atom-1	Atom-2	Interatomic distance (Å)	Clash overlap (Å)
2:C:169:GLN:HB3	2:C:241:THR:HG21	1.95	0.47
2:C:289:VAL:O	2:C:293:GLN:HG3	2.14	0.47
2:D:59:TRP:HE1	2:D:122:VAL:HB	1.79	0.47
2:D:114:GLY:HA3	2:D:117:PHE:CE1	2.49	0.47
1:B:412:LEU:HB3	1:B:441:LEU:HD21	1.96	0.47
1:B:438:ALA:HB2	1:B:447:PHE:HD2	1.79	0.47
2:C:30:ARG:NH1	2:C:67:GLU:HG2	2.30	0.47
1:A:146:TYR:HB2	1:A:147:PRO:CD	2.45	0.47
1:B:401:VAL:CG1	1:B:402:VAL:N	2.77	0.47
1:B:532:GLY:C	1:B:665:PRO:HG3	2.34	0.47
1:B:636:CYS:O	1:B:640:VAL:HG23	2.15	0.47
2:C:165:SER:OG	2:C:168:GLN:HG3	2.15	0.47
2:D:30:ARG:NH1	2:D:67:GLU:HG2	2.29	0.47
2:D:125:MET:CE	2:D:246:THR:H	2.27	0.47
2:D:318:GLN:C	2:D:321:PRO:HD2	2.35	0.47
1:A:453:PHE:HB2	1:A:459:MET:HG3	1.96	0.47
1:A:504:LEU:HG	1:A:662:ILE:HD11	1.95	0.47
1:A:658:LEU:O	1:A:662:ILE:HG22	2.14	0.47
1:B:434:ILE:HG23	1:B:447:PHE:CE2	2.49	0.47
1:B:523:ARG:O	1:B:527:VAL:HG23	2.15	0.47
1:B:655:ASP:O	1:B:659:VAL:HG23	2.14	0.47
2:C:361:LEU:HA	2:C:364:MET:HE2	1.96	0.47
2:D:286:TYR:CE1	2:D:289:VAL:HG11	2.50	0.47
2:D:10:ILE:HD11	2:D:271:ILE:HG13	1.96	0.47
2:D:30:ARG:NH1	2:D:32:GLU:OE1	2.47	0.47
1:A:546:ILE:N	1:A:546:ILE:CD1	2.76	0.47
1:B:618:GLU:CD	1:B:618:GLU:H	2.18	0.47
1:B:638:GLU:HA	1:B:641:ARG:HH11	1.78	0.47
1:B:684:VAL:CG2	1:B:703:LEU:HD22	2.45	0.47
1:B:704:ARG:HG2	1:B:704:ARG:HH11	1.80	0.47
2:C:17:PRO:HB2	2:C:25:MET:CE	2.45	0.47
2:C:175:ARG:HE	2:C:179:LEU:HD12	1.79	0.47
1:A:700:THR:OG1	1:A:703:LEU:HB2	2.15	0.47
1:B:23:ASP:OD2	1:B:62:LYS:HE2	2.14	0.47
1:B:528:MET:O	1:B:531:PHE:HB3	2.14	0.47
2:C:318:GLN:O	2:C:321:PRO:HD2	2.14	0.47
2:D:361:LEU:HD23	2:D:364:MET:CE	2.45	0.47
1:A:434:ILE:HG23	1:A:447:PHE:CE2	2.50	0.47
1:B:537:PRO:HG2	1:B:631:MET:HE2	1.96	0.47
1:B:303:LYS:HE3	1:B:650:THR:CG2	2.45	0.47
2:D:174:VAL:HG13	2:D:218:THR:O	2.15	0.47

Continued on next page...

Continued from previous page...

Atom-1	Atom-2	Interatomic distance (Å)	Clash overlap (Å)
1:B:119:LEU:HD23	1:B:119:LEU:O	2.15	0.46
1:B:352:GLN:O	1:B:355:ALA:HB3	2.15	0.46
1:A:664:PHE:CD2	1:A:670:GLY:HA2	2.50	0.46
2:C:303:MET:HE3	2:C:306:ILE:HD12	1.97	0.46
2:D:311:LEU:HD13	2:D:375:THR:HG23	1.98	0.46
1:B:7:ALA:HA	1:B:24:LEU:HA	1.96	0.46
2:C:318:GLN:O	2:C:322:VAL:HG23	2.15	0.46
2:D:310:GLU:HG3	2:D:360:LEU:HB2	1.98	0.46
1:A:100:GLU:O	1:A:216:ARG:HD3	2.16	0.46
1:A:140:GLU:HG3	1:A:147:PRO:N	2.31	0.46
1:A:544:VAL:HG21	4:A:1002:ACO:HH32	1.97	0.46
1:B:617:TYR:HB3	1:B:618:GLU:OE2	2.15	0.46
1:A:504:LEU:O	1:A:504:LEU:HD23	2.15	0.46
2:C:19:GLY:O	2:C:246:THR:HG23	2.14	0.46
1:A:332:GLN:OE1	1:A:457:HIS:HA	2.16	0.46
1:B:571:ALA:HB1	1:B:612:LEU:HD22	1.98	0.46
1:A:114:ALA:HB3	1:A:136:ILE:HG22	1.97	0.46
1:B:217:GLN:HB3	1:B:218:PRO:HD3	1.98	0.46
1:B:445:GLU:CD	1:B:445:GLU:H	2.19	0.46
1:B:575:LEU:HD22	1:B:580:ARG:HD3	1.98	0.46
1:B:642:CYS:O	1:B:647:ILE:HB	2.16	0.46
2:C:255:MET:HE3	2:C:259:ARG:CG	2.46	0.46
2:D:105:ALA:O	2:D:108:ALA:HB3	2.15	0.46
2:C:361:LEU:HD23	2:C:364:MET:HE3	1.96	0.46
1:A:119:LEU:O	1:A:119:LEU:HD23	2.15	0.46
1:B:162:ASP:HB2	2:D:141:SER:HB3	1.98	0.46
2:C:63:ASN:HB3	2:C:128:VAL:CG1	2.43	0.46
2:D:59:TRP:O	2:D:90:THR:HA	2.16	0.46
1:B:647:ILE:HG22	1:B:648:VAL:HG23	1.97	0.46
2:C:252:MET:HE3	2:C:354:ALA:HB1	1.97	0.46
1:A:442:LYS:HG3	1:A:443:ARG:HG3	1.98	0.45
1:B:113:ILE:HG22	1:B:115:LEU:HG	1.97	0.45
1:B:490:ILE:HD12	1:B:657:GLY:HA2	1.97	0.45
1:B:580:ARG:CZ	1:B:608:VAL:HG22	2.46	0.45
2:C:199:TYR:CZ	2:C:205:LEU:HD13	2.51	0.45
1:A:141:VAL:HA	1:A:145:ILE:O	2.16	0.45
1:A:180:LEU:HD23	1:A:180:LEU:C	2.36	0.45
1:A:354:LEU:HD22	1:B:380:ASN:OD1	2.15	0.45
2:D:62:VAL:CG2	2:D:349:PHE:HB3	2.46	0.45
1:A:197:ALA:HB2	2:D:204:PHE:CE1	2.52	0.45
1:B:325:MET:HG3	5:B:2001:NAD:O4D	2.17	0.45

Continued on next page...

Continued from previous page...

Atom-1	Atom-2	Interatomic distance (Å)	Clash overlap (Å)
2:C:59:TRP:CD1	2:C:122:VAL:HG12	2.52	0.45
2:C:107:GLN:HB3	2:D:107:GLN:HB3	1.99	0.45
2:D:170:ASP:O	2:D:174:VAL:HG23	2.17	0.45
1:A:638:GLU:HA	1:A:641:ARG:HH11	1.81	0.45
1:B:128:ARG:HG3	1:B:128:ARG:HH11	1.82	0.45
1:B:459:MET:HA	1:B:460:PRO:HD3	1.74	0.45
2:C:378:ILE:HG22	2:C:379:GLY:N	2.32	0.45
2:D:25:MET:HE1	2:D:208:PHE:HB2	1.97	0.45
1:A:502:ARG:HA	1:A:556:MET:CE	2.46	0.45
1:B:141:VAL:HA	1:B:145:ILE:O	2.16	0.45
1:B:350:ILE:CG2	1:B:384:PRO:HB3	2.45	0.45
2:C:166:ARG:HG2	2:C:166:ARG:HH11	1.82	0.45
1:B:664:PHE:CD2	1:B:670:GLY:HA2	2.51	0.45
2:C:288:PRO:HD3	2:C:377:CYS:HB3	1.99	0.45
1:A:107:VAL:HG23	1:A:202:ILE:CD1	2.47	0.45
1:A:432:ILE:HG21	1:A:437:LEU:HD21	1.98	0.45
1:A:443:ARG:N	1:A:444:PRO:HD3	2.32	0.45
1:B:551:HIS:O	1:B:555:VAL:HG23	2.17	0.45
1:B:639:THR:HG21	1:B:671:ALA:HB3	1.99	0.45
1:A:459:MET:HA	1:A:460:PRO:HD3	1.75	0.45
1:A:528:MET:O	1:A:531:PHE:HB3	2.17	0.45
1:B:194:LEU:HD23	1:B:194:LEU:C	2.37	0.45
1:B:525:ASP:HB3	1:B:537:PRO:HD2	1.99	0.45
2:C:9:VAL:CG1	2:C:267:PRO:HB3	2.47	0.45
1:A:569:ARG:O	1:A:615:ILE:HD12	2.17	0.45
1:B:146:TYR:HB2	1:B:147:PRO:CD	2.47	0.45
2:C:49:VAL:HG23	2:C:49:VAL:O	2.17	0.45
2:C:93:ARG:NH2	2:D:87:ALA:HB1	2.32	0.45
1:A:199:LEU:C	1:A:199:LEU:HD13	2.38	0.45
1:B:605:ASP:OD2	1:B:607:SER:OG	2.34	0.45
2:C:56:ASP:CG	2:D:93:ARG:HH22	2.21	0.45
2:C:322:VAL:HG12	2:C:326:LEU:HD12	1.99	0.45
2:D:17:PRO:HB2	2:D:25:MET:HE2	1.98	0.45
2:D:269:ALA:CB	2:D:361:LEU:HD22	2.47	0.45
1:B:100:GLU:O	1:B:216:ARG:HD3	2.16	0.44
1:B:396:LEU:C	1:B:396:LEU:HD23	2.37	0.44
2:C:114:GLY:HA3	2:C:117:PHE:CE1	2.52	0.44
2:D:151:MET:HE1	2:D:284:MET:SD	2.56	0.44
1:A:547:ASP:HB3	1:A:581:LEU:HD22	1.98	0.44
1:B:105:PRO:HG3	1:B:212:TYR:CG	2.53	0.44
1:B:325:MET:O	1:B:329:ILE:HG13	2.17	0.44

Continued on next page...

Continued from previous page...

Atom-1	Atom-2	Interatomic distance (Å)	Clash overlap (Å)
2:D:185:VAL:C	2:D:187:GLY:H	2.19	0.44
1:A:107:VAL:HG22	1:A:127:PHE:HB2	1.98	0.44
1:A:113:ILE:CG2	1:A:115:LEU:HG	2.47	0.44
1:A:442:LYS:C	1:A:444:PRO:HD3	2.38	0.44
1:A:465:ILE:N	1:A:465:ILE:CD1	2.80	0.44
1:B:157:ARG:HD2	1:B:219:LYS:HA	1.99	0.44
1:A:448:VAL:HG12	1:A:470:SER:HB3	1.99	0.44
1:A:655:ASP:O	1:A:659:VAL:HG23	2.18	0.44
1:B:180:LEU:HD23	1:B:180:LEU:C	2.37	0.44
1:B:364:ARG:HB3	1:B:370:MET:HB2	2.00	0.44
2:C:164:ILE:N	2:C:164:ILE:HD12	2.33	0.44
2:C:302:ASN:C	2:C:304:ALA:N	2.71	0.44
2:C:379:GLY:O	2:C:380:LEU:HB2	2.18	0.44
2:D:61:CYS:SG	2:D:68:GLN:HB3	2.57	0.44
2:D:99:MET:HB3	2:D:384:ILE:HD13	1.99	0.44
2:D:175:ARG:HG3	2:D:175:ARG:HH11	1.81	0.44
2:D:378:ILE:HG22	2:D:379:GLY:N	2.32	0.44
1:A:581:LEU:HB2	1:A:585:ASN:CB	2.45	0.44
1:B:611:VAL:O	1:B:614:PRO:HD2	2.17	0.44
2:C:93:ARG:HH22	2:D:56:ASP:CG	2.21	0.44
1:A:649:GLU:HB3	1:A:653:GLU:OE1	2.18	0.44
2:D:289:VAL:CG1	2:D:290:PRO:HD3	2.38	0.44
2:D:348:PRO:O	2:D:351:CYS:N	2.43	0.44
1:A:153:VAL:HG21	1:A:271:LEU:HD23	2.00	0.44
1:B:22:PHE:CE2	1:B:66:ILE:HD11	2.53	0.44
1:B:56:VAL:HG23	1:B:104:VAL:HG11	2.00	0.44
1:B:442:LYS:C	1:B:444:PRO:HD3	2.38	0.44
1:B:11:THR:O	1:B:18:VAL:HG23	2.17	0.44
2:C:155:ALA:HB2	2:C:315:PHE:CD2	2.53	0.44
2:C:310:GLU:HG3	2:C:360:LEU:HB2	2.00	0.44
2:D:51:PRO:HB3	2:D:82:ILE:HD13	2.00	0.44
1:A:629:ASN:HB3	1:A:633:ILE:HD11	2.00	0.44
1:B:676:ASP:OD2	1:B:712:SER:HB2	2.17	0.44
2:D:302:ASN:C	2:D:304:ALA:N	2.71	0.44
1:A:575:LEU:HD22	1:A:580:ARG:HD3	2.00	0.43
1:B:199:LEU:HD13	1:B:199:LEU:C	2.38	0.43
1:B:633:ILE:HD11	1:B:686:LEU:HD22	2.00	0.43
2:C:156:GLU:OE2	2:C:237:VAL:HG23	2.18	0.43
2:D:310:GLU:OE2	2:D:337:ASN:HA	2.17	0.43
1:A:424:ILE:HD12	1:A:424:ILE:H	1.83	0.43
1:B:537:PRO:HG2	1:B:631:MET:HE3	1.99	0.43

Continued on next page...

Continued from previous page...

Atom-1	Atom-2	Interatomic distance (Å)	Clash overlap (Å)
2:D:218:THR:HG23	2:D:223:LEU:HD21	2.00	0.43
2:D:252:MET:CE	2:D:354:ALA:HB1	2.48	0.43
2:D:322:VAL:HG12	2:D:326:LEU:HD12	2.00	0.43
1:A:288:ASN:N	1:A:288:ASN:ND2	2.66	0.43
1:A:499:LEU:HD13	1:A:499:LEU:C	2.39	0.43
2:C:59:TRP:O	2:C:90:THR:HA	2.19	0.43
2:C:64:GLN:HA	2:C:68:GLN:O	2.18	0.43
2:C:228:PRO:HB3	2:C:235:GLY:HA3	1.99	0.43
2:D:266:GLU:HA	2:D:267:PRO:HD3	1.88	0.43
1:A:100:GLU:OE1	1:A:154:ARG:NE	2.40	0.43
1:A:162:ASP:HB2	2:C:141:SER:OG	2.19	0.43
1:A:344:ASP:OD1	1:A:345:ILE:N	2.44	0.43
1:B:547:ASP:OD2	1:B:584:LYS:HD2	2.18	0.43
2:C:357:SER:O	2:C:361:LEU:HG	2.18	0.43
1:A:396:LEU:C	1:A:396:LEU:HD23	2.39	0.43
1:B:235:GLU:HA	1:B:235:GLU:OE2	2.19	0.43
1:B:367:LYS:C	1:B:369:ARG:H	2.22	0.43
1:B:461:LEU:HB2	1:B:660:TYR:HB3	2.00	0.43
2:C:62:VAL:CG2	2:C:349:PHE:HB3	2.46	0.43
2:D:13:PHE:CE2	2:D:358:GLY:HA3	2.53	0.43
2:D:289:VAL:O	2:D:293:GLN:HG3	2.19	0.43
1:A:551:HIS:O	1:A:555:VAL:HG23	2.19	0.43
1:B:78:PHE:CD1	1:B:282:ALA:HB1	2.52	0.43
1:B:635:LEU:C	1:B:635:LEU:HD23	2.39	0.43
1:A:618:GLU:CD	1:A:618:GLU:H	2.22	0.43
1:B:73:GLU:HA	1:B:76:GLU:OE1	2.19	0.43
2:C:84:HIS:O	2:D:278:GLY:HA3	2.19	0.43
2:D:49:VAL:O	2:D:49:VAL:HG23	2.19	0.43
1:A:56:VAL:HG23	1:A:104:VAL:HG11	2.01	0.43
2:C:72:ILE:O	2:C:72:ILE:HG12	2.19	0.43
2:C:348:PRO:O	2:C:351:CYS:N	2.45	0.43
1:A:350:ILE:CG2	1:A:384:PRO:HB3	2.45	0.43
1:B:502:ARG:HA	1:B:556:MET:HE2	2.00	0.43
2:C:201:GLU:CD	2:C:201:GLU:H	2.22	0.43
2:D:63:ASN:HB3	2:D:128:VAL:CG1	2.48	0.43
2:D:269:ALA:HB2	2:D:361:LEU:HD22	2.01	0.43
1:B:712:SER:OG	1:B:715:GLY:HA3	2.19	0.42
1:A:130:MET:HG2	1:A:131:ALA:O	2.18	0.42
1:A:508:PHE:HZ	1:A:540:LEU:HD22	1.83	0.42
1:B:332:GLN:OE1	1:B:457:HIS:HA	2.19	0.42
1:B:373:ALA:O	1:B:376:ALA:HB3	2.19	0.42

Continued on next page...

Continued from previous page...

Atom-1	Atom-2	Interatomic distance (Å)	Clash overlap (Å)
1:B:540:LEU:HD23	1:B:544:VAL:HG23	2.01	0.42
2:D:162:HIS:CD2	2:D:321:PRO:HB3	2.55	0.42
2:D:200:ASP:OD2	2:D:204:PHE:HB2	2.19	0.42
1:B:504:LEU:HG	1:B:662:ILE:CD1	2.49	0.42
1:B:506:PRO:HG3	1:B:564:MET:CE	2.49	0.42
1:A:521:PHE:HA	1:A:524:ILE:HD12	2.01	0.42
1:A:540:LEU:HD23	1:A:544:VAL:HG23	2.01	0.42
1:A:668:ARG:HG2	1:A:668:ARG:NH1	2.34	0.42
1:B:162:ASP:HB2	2:D:141:SER:CB	2.49	0.42
1:B:539:TYR:CD1	1:B:602:LYS:HD3	2.54	0.42
2:C:278:GLY:O	2:D:85:THR:HA	2.18	0.42
2:D:230:PHE:O	2:D:232:PRO:HD3	2.19	0.42
1:A:20:LEU:C	1:A:20:LEU:HD23	2.39	0.42
1:B:130:MET:HG2	1:B:131:ALA:O	2.18	0.42
2:C:25:MET:HE1	2:C:208:PHE:HB2	2.02	0.42
2:C:123:GLU:HG2	2:C:349:PHE:HB2	2.01	0.42
2:D:4:ASN:N	2:D:7:ASP:OD2	2.51	0.42
2:D:64:GLN:HA	2:D:68:GLN:O	2.19	0.42
2:D:287:GLY:N	2:D:288:PRO:CD	2.83	0.42
2:D:318:GLN:O	2:D:321:PRO:HD2	2.19	0.42
1:A:105:PRO:HG3	1:A:212:TYR:CG	2.54	0.42
1:B:258:THR:HG23	1:B:273:VAL:HG12	2.02	0.42
1:B:466:ARG:HG3	1:B:470:SER:HB2	2.00	0.42
1:B:697:TYR:O	1:B:699:PRO:HD3	2.19	0.42
1:B:453:PHE:HB2	1:B:459:MET:HG3	2.02	0.42
1:B:502:ARG:HH12	1:B:647:ILE:HG12	1.83	0.42
1:B:508:PHE:O	1:B:511:PHE:HB3	2.20	0.42
2:C:364:MET:HE1	2:C:372:GLY:HA3	2.02	0.42
1:A:119:LEU:HD12	1:A:137:GLY:N	2.34	0.42
1:B:30:ASN:ND2	1:B:62:LYS:HG3	2.35	0.42
2:C:87:ALA:HB1	2:D:93:ARG:NH2	2.32	0.42
2:D:13:PHE:CD2	2:D:358:GLY:HA3	2.55	0.42
1:A:55:GLY:HA2	1:A:104:VAL:CG1	2.47	0.42
1:A:318:ALA:HB3	1:A:397:VAL:HG22	2.01	0.42
1:A:336:LYS:HG3	1:A:485:MET:HA	2.02	0.42
1:B:17:ILE:HG22	1:B:18:VAL:N	2.34	0.42
1:B:287:SER:O	1:B:291:ILE:HG13	2.20	0.42
1:B:673:ARG:HH11	1:B:673:ARG:CB	2.25	0.42
2:C:125:MET:CE	2:C:246:THR:H	2.32	0.42
2:D:294:LYS:HD3	2:D:298:ARG:NH2	2.34	0.42
2:D:354:ALA:O	2:D:358:GLY:N	2.51	0.42

Continued on next page...

Continued from previous page...

Atom-1	Atom-2	Interatomic distance (Å)	Clash overlap (Å)
1:A:479:VAL:HG13	1:A:489:PRO:CG	2.49	0.42
1:A:635:LEU:C	1:A:635:LEU:HD23	2.39	0.42
1:B:432:ILE:HG21	1:B:437:LEU:HD21	2.02	0.42
2:C:278:GLY:HA3	2:D:84:HIS:O	2.18	0.42
1:A:525:ASP:HB3	1:A:537:PRO:HD2	2.02	0.41
1:A:642:CYS:O	1:A:647:ILE:HB	2.20	0.41
1:B:97:SER:HB3	1:B:267:ARG:NH1	2.35	0.41
1:B:211:ASP:OD1	1:B:214:ALA:N	2.50	0.41
1:B:682:GLU:OE1	1:B:682:GLU:N	2.51	0.41
1:B:704:ARG:HG2	1:B:704:ARG:NH1	2.35	0.41
2:C:265:LEU:N	2:C:265:LEU:CD2	2.83	0.41
1:A:287:SER:C	1:A:289:CYS:H	2.23	0.41
1:A:643:LEU:HD23	1:A:643:LEU:C	2.41	0.41
1:B:90:LEU:O	1:B:94:LYS:HG3	2.20	0.41
1:B:119:LEU:HD12	1:B:137:GLY:N	2.34	0.41
2:C:56:ASP:OD1	2:D:93:ARG:NH2	2.53	0.41
2:D:15:ARG:NH2	2:D:193:ILE:HD11	2.35	0.41
2:D:72:ILE:O	2:D:72:ILE:HG12	2.19	0.41
2:D:268:LEU:O	2:D:269:ALA:HB2	2.20	0.41
1:A:287:SER:O	1:A:291:ILE:HG13	2.21	0.41
1:A:325:MET:HE2	1:A:428:ASN:HD21	1.85	0.41
1:A:358:ALA:O	1:A:359:LYS:C	2.58	0.41
1:A:508:PHE:O	1:A:511:PHE:HB3	2.20	0.41
2:C:162:HIS:O	2:C:164:ILE:HD12	2.20	0.41
2:D:155:ALA:HB2	2:D:315:PHE:CD2	2.55	0.41
2:D:164:ILE:HD11	2:D:321:PRO:HG3	2.03	0.41
1:A:3:TYR:HB3	1:A:10:VAL:HB	2.01	0.41
1:A:248:ASN:O	1:A:250:PRO:HD3	2.20	0.41
1:B:233:ALA:HB2	2:D:145:ALA:CB	2.51	0.41
1:B:581:LEU:HB2	1:B:585:ASN:CB	2.45	0.41
2:C:5:PRO:HA	2:C:258:GLN:HB2	2.02	0.41
2:C:334:GLU:O	2:C:334:GLU:HG2	2.20	0.41
2:D:288:PRO:HD3	2:D:377:CYS:HB3	2.01	0.41
1:A:320:LEU:HD13	1:A:411:VAL:CG1	2.51	0.41
1:A:445:GLU:CD	1:A:445:GLU:H	2.24	0.41
1:A:669:GLY:HA3	1:A:673:ARG:HD2	2.02	0.41
2:C:10:ILE:HD11	2:C:271:ILE:HG13	2.03	0.41
2:C:268:LEU:O	2:C:269:ALA:HB2	2.20	0.41
1:A:154:ARG:HD3	1:A:219:LYS:HD2	2.02	0.41
1:A:349:GLY:O	1:A:352:GLN:HB2	2.19	0.41
1:A:704:ARG:HG2	1:A:704:ARG:HH11	1.86	0.41

Continued on next page...

Continued from previous page...

Atom-1	Atom-2	Interatomic distance (Å)	Clash overlap (Å)
1:B:97:SER:O	1:B:100:GLU:HB3	2.20	0.41
1:B:344:ASP:OD1	1:B:345:ILE:N	2.50	0.41
1:A:535:MET:SD	1:A:543:VAL:HG21	2.60	0.41
1:B:311:ALA:HB2	1:B:476:ALA:HB1	2.03	0.41
1:B:358:ALA:O	1:B:359:LYS:C	2.59	0.41
1:B:617:TYR:CB	1:B:618:GLU:OE2	2.68	0.41
2:C:104:THR:HG23	2:D:104:THR:HG23	2.03	0.41
1:A:438:ALA:HB2	1:A:447:PHE:HD2	1.84	0.41
2:C:166:ARG:HG2	2:C:166:ARG:NH1	2.36	0.41
2:D:303:MET:CE	2:D:309:ILE:HD11	2.51	0.41
1:A:147:PRO:HB2	1:A:152:THR:HG23	2.01	0.41
1:A:325:MET:HG3	5:A:1001:NAD:O4D	2.20	0.41
1:A:393:ASN:H	1:A:393:ASN:HD22	1.68	0.41
1:A:535:MET:SD	1:A:539:TYR:CE2	3.13	0.41
1:B:100:GLU:OE1	1:B:154:ARG:NE	2.44	0.41
2:C:233:LYS:H	2:C:233:LYS:HG2	1.69	0.41
2:C:287:GLY:C	2:C:290:PRO:HD2	2.41	0.41
2:D:9:VAL:CG1	2:D:267:PRO:HB3	2.48	0.41
2:D:310:GLU:CG	2:D:360:LEU:HB2	2.51	0.41
1:A:194:LEU:C	1:A:194:LEU:CD2	2.90	0.41
1:A:365:VAL:HG22	1:A:370:MET:HG2	2.01	0.41
1:A:532:GLY:C	1:A:665:PRO:HG3	2.41	0.41
1:A:639:THR:HG21	1:A:671:ALA:HB3	2.01	0.41
1:B:465:ILE:N	1:B:465:ILE:CD1	2.83	0.41
2:C:255:MET:HE2	2:C:260:ALA:N	2.35	0.41
2:C:15:ARG:NH2	2:C:193:ILE:HD11	2.36	0.40
1:A:466:ARG:HG3	1:A:470:SER:HB2	2.04	0.40
1:A:473:LEU:HD23	1:A:473:LEU:O	2.20	0.40
2:D:5:PRO:HA	2:D:258:GLN:HB2	2.02	0.40
2:D:164:ILE:HD12	2:D:164:ILE:N	2.36	0.40
2:D:204:PHE:N	2:D:204:PHE:CD1	2.88	0.40
1:A:434:ILE:HD12	1:A:434:ILE:N	2.37	0.40
1:B:128:ARG:HG3	1:B:128:ARG:NH1	2.36	0.40
1:A:258:THR:HG23	1:A:273:VAL:HG12	2.03	0.40
1:A:397:VAL:HB	1:A:425:LEU:HD23	2.02	0.40
1:A:17:ILE:HG22	1:A:18:VAL:N	2.36	0.40
1:A:18:VAL:HG12	1:A:55:GLY:O	2.21	0.40
1:B:622:VAL:HG23	1:B:626:ASP:CB	2.51	0.40
2:D:164:ILE:HG22	2:D:169:GLN:HG3	2.03	0.40

There are no symmetry-related clashes.

5.3 Torsion angles

5.3.1 Protein backbone

In the following table, the Percentiles column shows the percent Ramachandran outliers of the chain as a percentile score with respect to all X-ray entries followed by that with respect to entries of similar resolution.

The Analysed column shows the number of residues for which the backbone conformation was analysed, and the total number of residues.

Mol	Chain	Analysed	Favoured	Allowed	Outliers	Percentiles	
1	A	703/715 (98%)	632 (90%)	66 (9%)	5 (1%)	22	60
1	B	706/715 (99%)	628 (89%)	73 (10%)	5 (1%)	22	60
2	C	388/390 (100%)	343 (88%)	37 (10%)	8 (2%)	7	40
2	D	388/390 (100%)	346 (89%)	35 (9%)	7 (2%)	8	42
All	All	2185/2210 (99%)	1949 (89%)	211 (10%)	25 (1%)	14	51

All (25) Ramachandran outliers are listed below:

Mol	Chain	Res	Type
1	B	324	ILE
2	C	332	MET
2	C	349	PHE
2	D	332	MET
2	D	349	PHE
1	A	15	SER
1	A	324	ILE
1	B	15	SER
2	C	303	MET
2	D	303	MET
1	B	709	ASN
2	C	186	GLU
2	C	333	ASN
2	D	333	ASN
1	A	287	SER
2	C	264	GLY
2	D	186	GLU
1	B	667	PHE
2	C	54	VAL
2	D	54	VAL
2	D	264	GLY
1	A	368	GLY

Continued on next page...

Continued from previous page...

Mol	Chain	Res	Type
1	B	616	VAL
1	A	616	VAL
2	C	232	PRO

5.3.2 Protein sidechains [i](#)

In the following table, the Percentiles column shows the percent sidechain outliers of the chain as a percentile score with respect to all X-ray entries followed by that with respect to entries of similar resolution.

The Analysed column shows the number of residues for which the sidechain conformation was analysed, and the total number of residues.

Mol	Chain	Analysed	Rotameric	Outliers	Percentiles	
1	A	532/562 (95%)	521 (98%)	11 (2%)	53	74
1	B	539/562 (96%)	527 (98%)	12 (2%)	52	72
2	C	302/307 (98%)	292 (97%)	10 (3%)	38	65
2	D	301/307 (98%)	291 (97%)	10 (3%)	38	65
All	All	1674/1738 (96%)	1631 (97%)	43 (3%)	46	69

All (43) residues with a non-rotameric sidechain are listed below:

Mol	Chain	Res	Type
1	A	113	ILE
1	A	142	LYS
1	A	178	ASP
1	A	288	ASN
1	A	289	CYS
1	A	366	ASP
1	A	393	ASN
1	A	504	LEU
1	A	554	ASP
1	A	618	GLU
1	A	692	GLU
1	B	82	ASP
1	B	142	LYS
1	B	178	ASP
1	B	288	ASN
1	B	289	CYS
1	B	366	ASP
1	B	393	ASN

Continued on next page...

Continued from previous page...

Mol	Chain	Res	Type
1	B	504	LEU
1	B	554	ASP
1	B	673	ARG
1	B	676	ASP
1	B	692	GLU
2	C	115	ASP
2	C	158	LEU
2	C	175	ARG
2	C	265	LEU
2	C	284	MET
2	C	289	VAL
2	C	318	GLN
2	C	325	ASP
2	C	351	CYS
2	C	355	ARG
2	D	115	ASP
2	D	158	LEU
2	D	175	ARG
2	D	265	LEU
2	D	284	MET
2	D	289	VAL
2	D	318	GLN
2	D	325	ASP
2	D	351	CYS
2	D	355	ARG

Sometimes sidechains can be flipped to improve hydrogen bonding and reduce clashes. All (35) such sidechains are listed below:

Mol	Chain	Res	Type
1	A	38	ASN
1	A	288	ASN
1	A	296	ASN
1	A	298	GLN
1	A	393	ASN
1	A	409	GLN
1	A	629	ASN
1	A	709	ASN
1	B	30	ASN
1	B	38	ASN
1	B	42	GLN
1	B	288	ASN
1	B	296	ASN

Continued on next page...

Continued from previous page...

Mol	Chain	Res	Type
1	B	298	GLN
1	B	393	ASN
1	B	409	GLN
1	B	428	ASN
1	B	629	ASN
2	C	4	ASN
2	C	46	ASN
2	C	89	GLN
2	C	162	HIS
2	C	197	GLN
2	C	293	GLN
2	C	312	ASN
2	C	318	GLN
2	C	362	ASN
2	D	4	ASN
2	D	46	ASN
2	D	89	GLN
2	D	162	HIS
2	D	197	GLN
2	D	293	GLN
2	D	318	GLN
2	D	362	ASN

5.3.3 RNA [i](#)

There are no RNA molecules in this entry.

5.4 Non-standard residues in protein, DNA, RNA chains [i](#)

There are no non-standard protein/DNA/RNA residues in this entry.

5.5 Carbohydrates [i](#)

There are no monosaccharides in this entry.

5.6 Ligand geometry [i](#)

Of 6 ligands modelled in this entry, 1 is monoatomic - leaving 5 for Mogul analysis.

In the following table, the Counts columns list the number of bonds (or angles) for which Mogul statistics could be retrieved, the number of bonds (or angles) that are observed in the model and

the number of bonds (or angles) that are defined in the Chemical Component Dictionary. The Link column lists molecule types, if any, to which the group is linked. The Z score for a bond length (or angle) is the number of standard deviations the observed value is removed from the expected value. A bond length (or angle) with $|Z| > 2$ is considered an outlier worth inspection. RMSZ is the root-mean-square of all Z scores of the bond lengths (or angles).

Mol	Type	Chain	Res	Link	Bond lengths			Bond angles		
					Counts	RMSZ	# Z > 2	Counts	RMSZ	# Z > 2
5	NAD	A	1001	-	42,48,48	1.49	5 (11%)	50,73,73	1.53	5 (10%)
4	ACO	D	4001	-	45,53,53	0.77	0	56,79,79	0.85	3 (5%)
5	NAD	B	2001	-	42,48,48	1.46	5 (11%)	50,73,73	1.53	6 (12%)
4	ACO	A	1002	-	45,53,53	0.80	1 (2%)	56,79,79	0.90	3 (5%)
4	ACO	C	3001	-	45,53,53	0.84	1 (2%)	56,79,79	0.92	2 (3%)

In the following table, the Chirals column lists the number of chiral outliers, the number of chiral centers analysed, the number of these observed in the model and the number defined in the Chemical Component Dictionary. Similar counts are reported in the Torsion and Rings columns. '-' means no outliers of that kind were identified.

Mol	Type	Chain	Res	Link	Chirals	Torsions	Rings
5	NAD	A	1001	-	-	6/26/62/62	0/5/5/5
4	ACO	D	4001	-	-	13/47/67/67	0/3/3/3
5	NAD	B	2001	-	-	6/26/62/62	0/5/5/5
4	ACO	A	1002	-	-	8/47/67/67	0/3/3/3
4	ACO	C	3001	-	-	7/47/67/67	0/3/3/3

All (12) bond length outliers are listed below:

Mol	Chain	Res	Type	Atoms	Z	Observed(Å)	Ideal(Å)
5	A	1001	NAD	C3N-C7N	5.37	1.58	1.50
5	B	2001	NAD	C3N-C7N	5.11	1.58	1.50
5	B	2001	NAD	C2N-N1N	4.29	1.40	1.35
5	A	1001	NAD	C2N-N1N	4.25	1.40	1.35
5	B	2001	NAD	C6N-N1N	3.29	1.43	1.35
5	B	2001	NAD	C4N-C3N	3.24	1.44	1.39
5	A	1001	NAD	C6N-N1N	3.20	1.43	1.35
5	A	1001	NAD	C4N-C3N	3.20	1.44	1.39
4	A	1002	ACO	C2A-N3A	2.40	1.36	1.32
4	C	3001	ACO	C2A-N3A	2.24	1.35	1.32
5	A	1001	NAD	C2A-N3A	2.17	1.35	1.32
5	B	2001	NAD	C2A-N3A	2.09	1.35	1.32

All (19) bond angle outliers are listed below:

Mol	Chain	Res	Type	Atoms	Z	Observed(°)	Ideal(°)
5	A	1001	NAD	C5N-C4N-C3N	-5.71	113.58	120.34
5	B	2001	NAD	C5N-C4N-C3N	-5.53	113.80	120.34
5	A	1001	NAD	C6N-C5N-C4N	5.47	127.39	119.44
5	B	2001	NAD	C6N-C5N-C4N	5.42	127.32	119.44
5	B	2001	NAD	C5N-C6N-N1N	-3.66	115.15	120.40
4	A	1002	ACO	P2A-O3A-P1A	-3.64	120.33	132.83
4	C	3001	ACO	P2A-O3A-P1A	-3.64	120.35	132.83
4	A	1002	ACO	C2P-S1P-C	3.51	120.15	101.68
5	A	1001	NAD	C5N-C6N-N1N	-3.45	115.46	120.40
4	D	4001	ACO	C2P-S1P-C	3.43	119.72	101.68
4	C	3001	ACO	C2P-S1P-C	3.38	119.46	101.68
5	A	1001	NAD	PN-O3-PA	-3.33	121.40	132.83
5	B	2001	NAD	PN-O3-PA	-3.26	121.62	132.83
5	A	1001	NAD	C2N-C3N-C4N	3.17	121.85	118.26
5	B	2001	NAD	C2N-C3N-C4N	3.01	121.67	118.26
4	D	4001	ACO	P2A-O3A-P1A	-2.98	122.61	132.83
4	D	4001	ACO	C5A-C6A-N6A	2.32	123.87	120.35
5	B	2001	NAD	C5A-C6A-N6A	2.05	123.46	120.35
4	A	1002	ACO	C5A-C6A-N6A	2.03	123.44	120.35

There are no chirality outliers.

All (40) torsion outliers are listed below:

Mol	Chain	Res	Type	Atoms
4	A	1002	ACO	C3B-C4B-C5B-O5B
4	A	1002	ACO	C5B-O5B-P1A-O2A
4	A	1002	ACO	C5B-O5B-P1A-O3A
4	A	1002	ACO	C3P-C2P-S1P-C
4	A	1002	ACO	O-C-S1P-C2P
4	A	1002	ACO	CH3-C-S1P-C2P
4	C	3001	ACO	C5B-O5B-P1A-O1A
4	C	3001	ACO	C5B-O5B-P1A-O3A
4	C	3001	ACO	S1P-C2P-C3P-N4P
4	C	3001	ACO	C3P-C2P-S1P-C
4	C	3001	ACO	O-C-S1P-C2P
4	C	3001	ACO	CH3-C-S1P-C2P
4	D	4001	ACO	C5B-O5B-P1A-O1A
4	D	4001	ACO	C5B-O5B-P1A-O3A
4	D	4001	ACO	N8P-C9P-CAP-OAP
4	D	4001	ACO	S1P-C2P-C3P-N4P
4	D	4001	ACO	C3P-C2P-S1P-C

Continued on next page...

Continued from previous page...

Mol	Chain	Res	Type	Atoms
4	D	4001	ACO	O-C-S1P-C2P
4	D	4001	ACO	CH3-C-S1P-C2P
5	A	1001	NAD	C2N-C3N-C7N-O7N
5	A	1001	NAD	C2N-C3N-C7N-N7N
5	B	2001	NAD	C2N-C3N-C7N-O7N
5	B	2001	NAD	C2N-C3N-C7N-N7N
5	A	1001	NAD	C4N-C3N-C7N-O7N
5	A	1001	NAD	C4N-C3N-C7N-N7N
5	B	2001	NAD	C4N-C3N-C7N-O7N
5	B	2001	NAD	C4N-C3N-C7N-N7N
4	D	4001	ACO	C3B-C4B-C5B-O5B
4	D	4001	ACO	O4B-C4B-C5B-O5B
4	A	1002	ACO	O4B-C4B-C5B-O5B
4	D	4001	ACO	O9P-C9P-CAP-OAP
4	A	1002	ACO	C4B-C5B-O5B-P1A
4	D	4001	ACO	C3B-O3B-P3B-O8A
5	B	2001	NAD	C5D-O5D-PN-O3
4	C	3001	ACO	C5B-O5B-P1A-O2A
5	A	1001	NAD	O4B-C4B-C5B-O5B
5	B	2001	NAD	O4B-C4B-C5B-O5B
5	A	1001	NAD	C3B-C4B-C5B-O5B
4	D	4001	ACO	C2P-C3P-N4P-C5P
4	D	4001	ACO	CCP-O6A-P2A-O4A

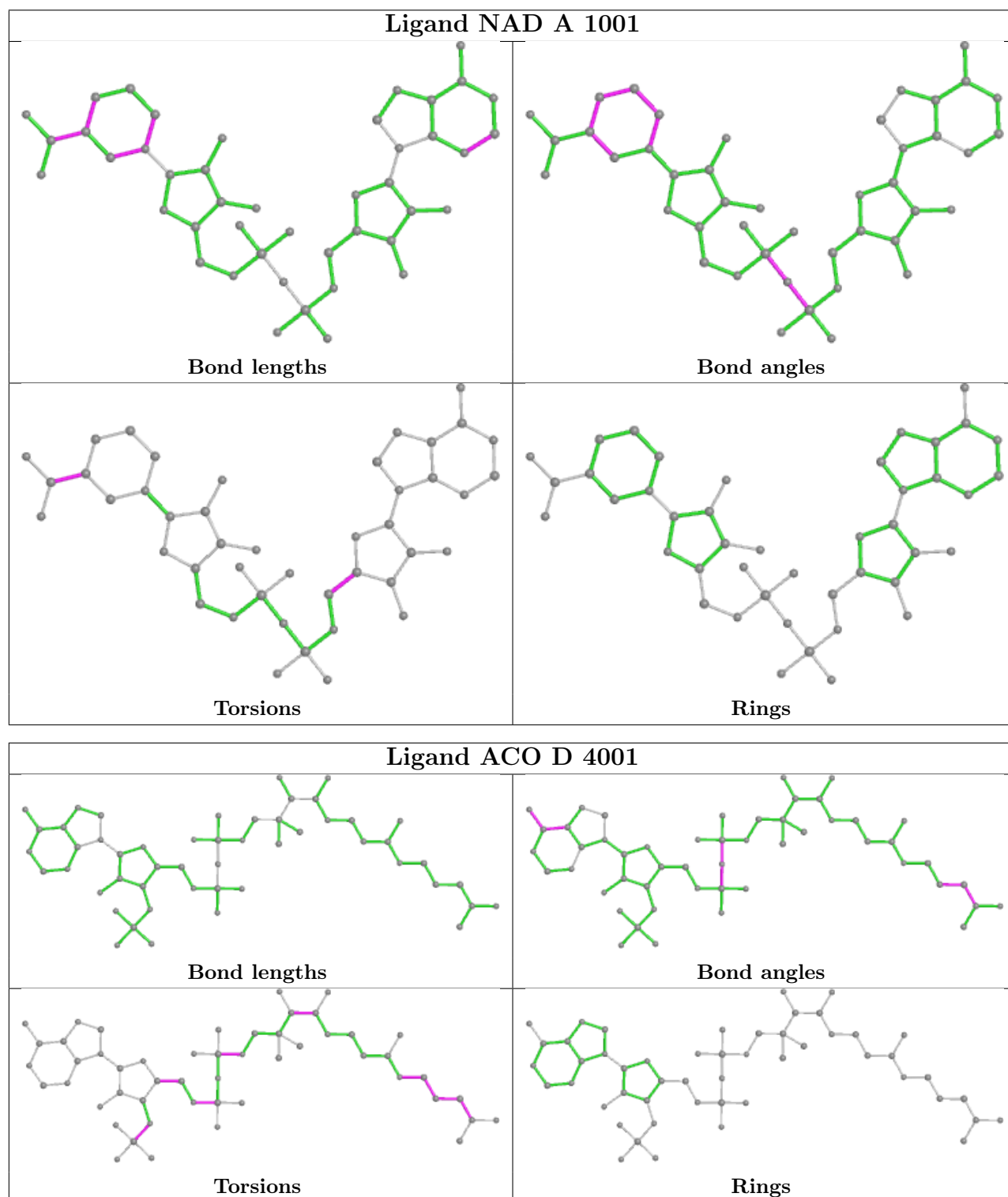
There are no ring outliers.

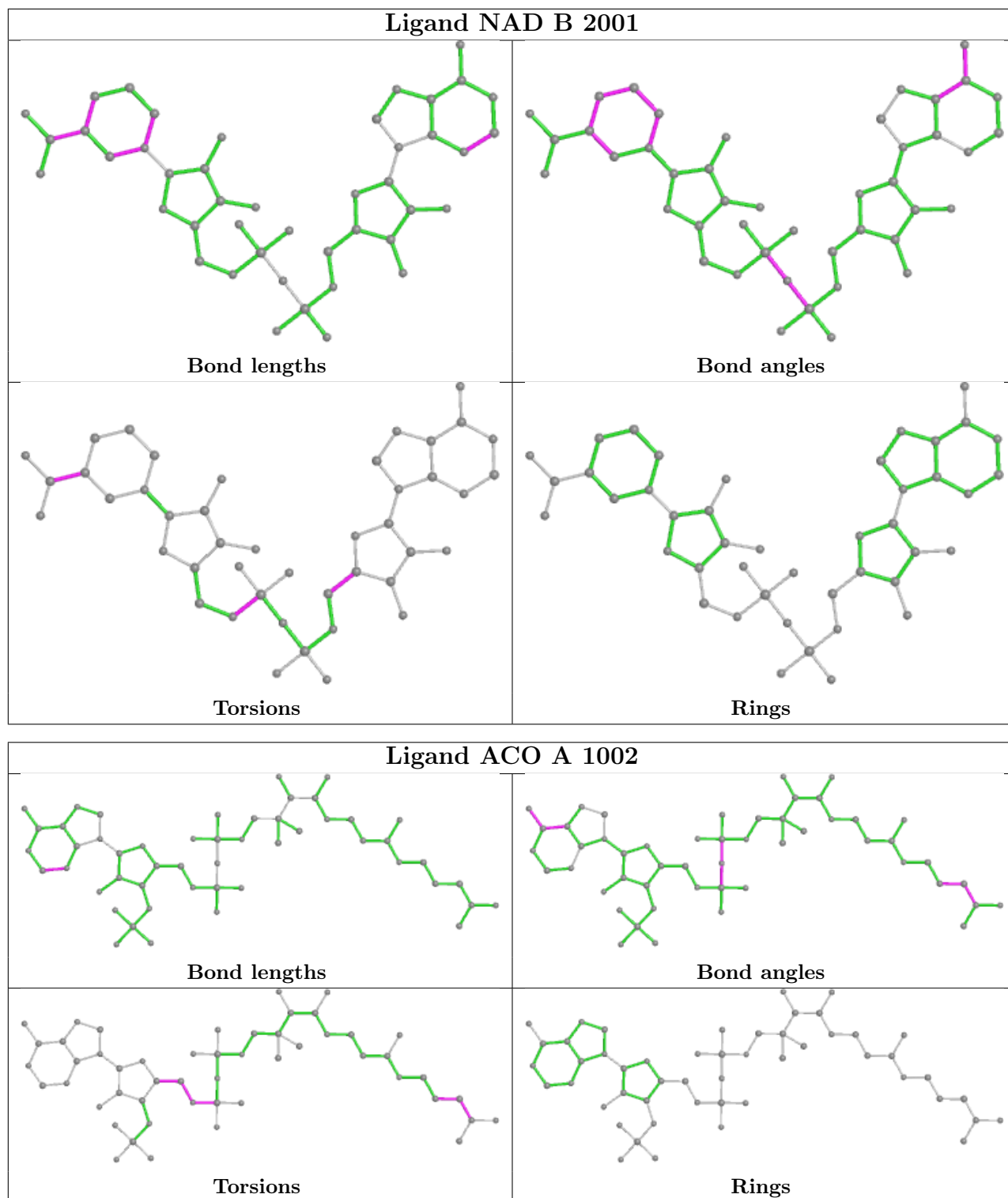
3 monomers are involved in 4 short contacts:

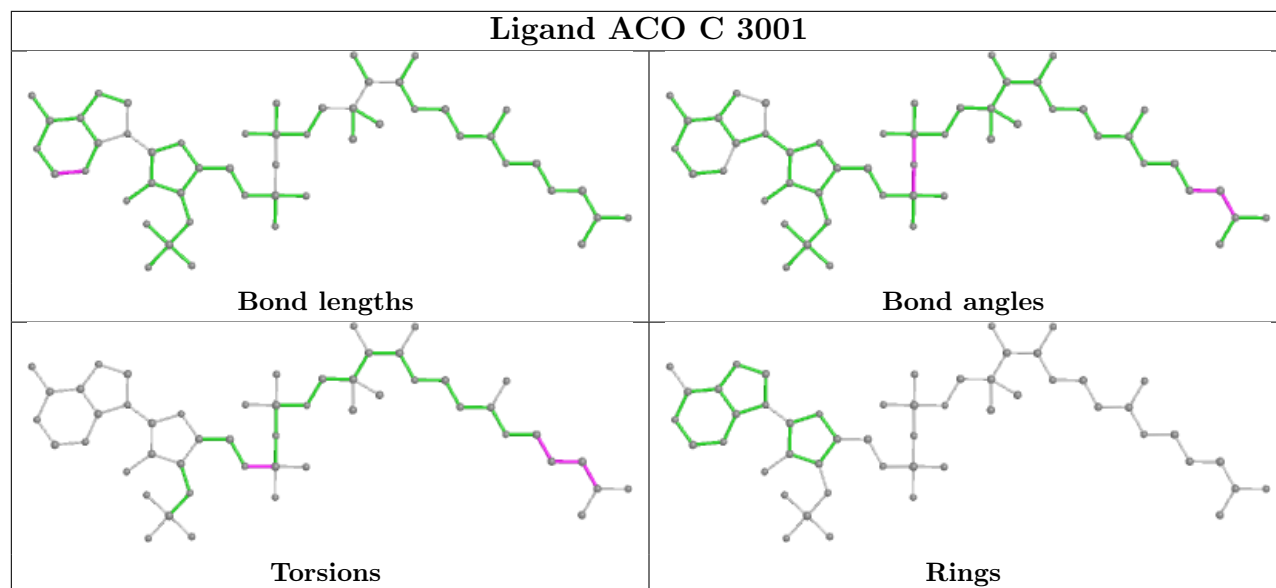
Mol	Chain	Res	Type	Clashes	Symm-Clashes
5	A	1001	NAD	1	0
5	B	2001	NAD	1	0
4	A	1002	ACO	2	0

The following is a two-dimensional graphical depiction of Mogul quality analysis of bond lengths, bond angles, torsion angles, and ring geometry for all instances of the Ligand of Interest. In addition, ligands with molecular weight > 250 and outliers as shown on the validation Tables will also be included. For torsion angles, if less than 5% of the Mogul distribution of torsion angles is within 10 degrees of the torsion angle in question, then that torsion angle is considered an outlier. Any bond that is central to one or more torsion angles identified as an outlier by Mogul will be highlighted in the graph. For rings, the root-mean-square deviation (RMSD) between the ring in question and similar rings identified by Mogul is calculated over all ring torsion angles. If the average RMSD is greater than 60 degrees and the minimal RMSD between the ring in question and any Mogul-identified rings is also greater than 60 degrees, then that ring is considered an outlier.

The outliers are highlighted in purple. The color gray indicates Mogul did not find sufficient equivalents in the CSD to analyse the geometry.







5.7 Other polymers [i](#)

There are no such residues in this entry.

5.8 Polymer linkage issues [i](#)

There are no chain breaks in this entry.

6 Fit of model and data [i](#)

6.1 Protein, DNA and RNA chains [i](#)

In the following table, the column labelled ‘#RSRZ> 2’ contains the number (and percentage) of RSRZ outliers, followed by percent RSRZ outliers for the chain as percentile scores relative to all X-ray entries and entries of similar resolution. The OWAB column contains the minimum, median, 95th percentile and maximum values of the occupancy-weighted average B-factor per residue. The column labelled ‘Q< 0.9’ lists the number of (and percentage) of residues with an average occupancy less than 0.9.

Mol	Chain	Analysed	<RSRZ>	#RSRZ>2	OWAB(Å ²)	Q<0.9
1	A	707/715 (98%)	-0.68	0 100 100	1, 21, 67, 97	0
1	B	710/715 (99%)	-0.65	2 (0%) 94 91	1, 22, 65, 99	0
2	C	390/390 (100%)	-0.73	0 100 100	1, 8, 45, 83	0
2	D	390/390 (100%)	-0.72	0 100 100	1, 11, 45, 97	0
All	All	2197/2210 (99%)	-0.69	2 (0%) 95 95	1, 17, 61, 99	0

All (2) RSRZ outliers are listed below:

Mol	Chain	Res	Type	RSRZ
1	B	600	GLN	2.1
1	B	567	ASP	2.1

6.2 Non-standard residues in protein, DNA, RNA chains [i](#)

There are no non-standard protein/DNA/RNA residues in this entry.

6.3 Carbohydrates [i](#)

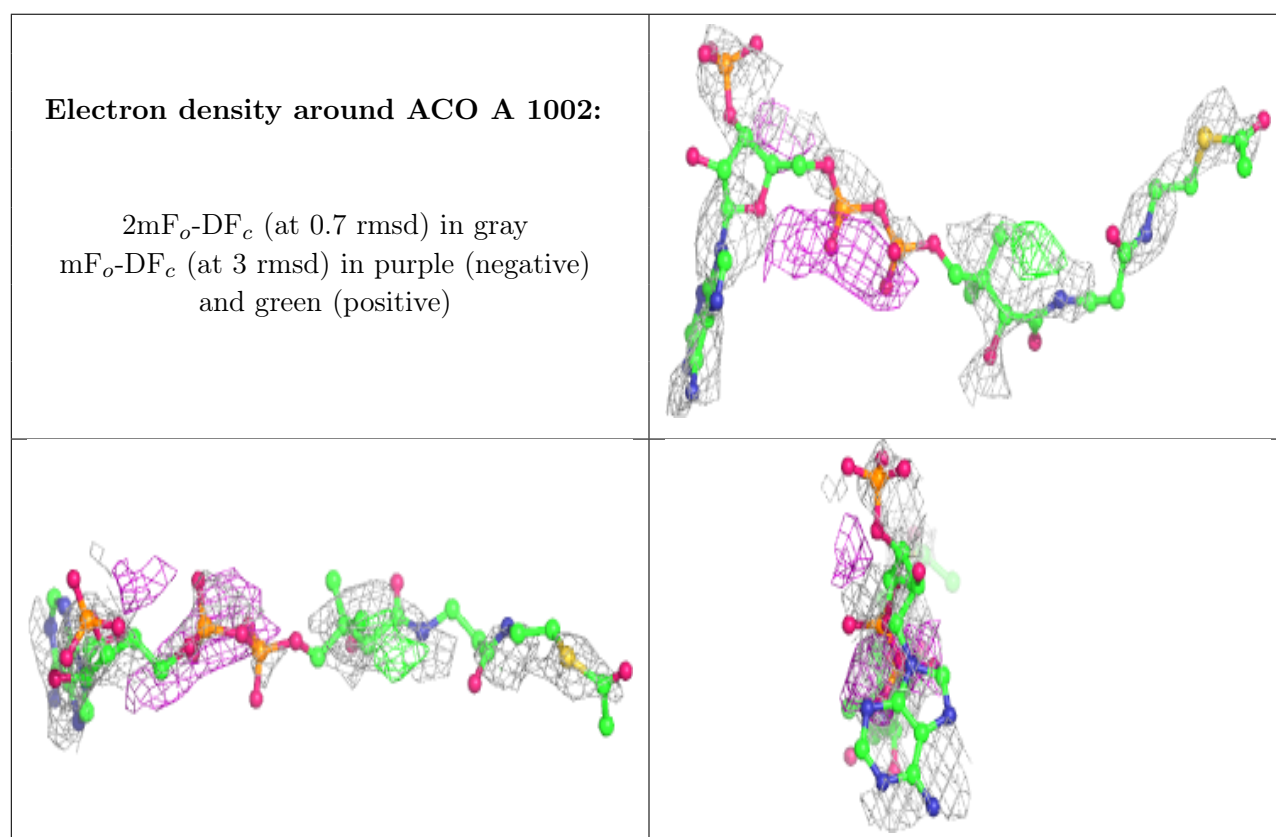
There are no monosaccharides in this entry.

6.4 Ligands [i](#)

In the following table, the Atoms column lists the number of modelled atoms in the group and the number defined in the chemical component dictionary. The B-factors column lists the minimum, median, 95th percentile and maximum values of B factors of atoms in the group. The column labelled ‘Q< 0.9’ lists the number of atoms with occupancy less than 0.9.

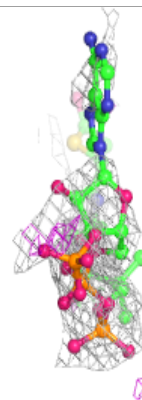
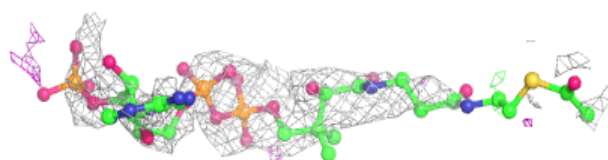
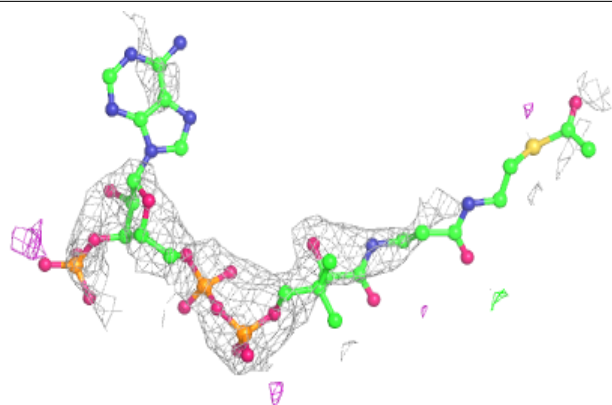
Mol	Type	Chain	Res	Atoms	RSCC	RSR	B-factors(\AA^2)	Q<0.9
4	ACO	A	1002	51/51	0.57	0.58	160,160,160,160	0
4	ACO	C	3001	51/51	0.77	0.44	159,159,159,159	0
5	NAD	B	2001	44/44	0.81	0.35	123,123,123,123	0
4	ACO	D	4001	51/51	0.84	0.39	133,133,133,133	0
5	NAD	A	1001	44/44	0.87	0.32	98,98,98,98	0
3	ZN	A	716	1/1	0.99	0.04	5,5,5,5	0

The following is a graphical depiction of the model fit to experimental electron density of all instances of the Ligand of Interest. In addition, ligands with molecular weight > 250 and outliers as shown on the geometry validation Tables will also be included. Each fit is shown from different orientation to approximate a three-dimensional view.

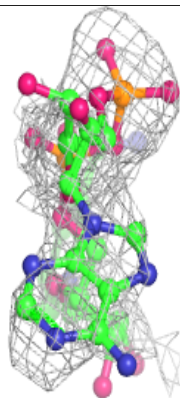
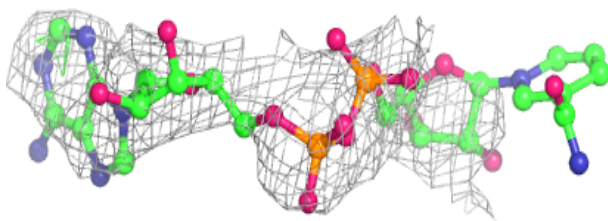
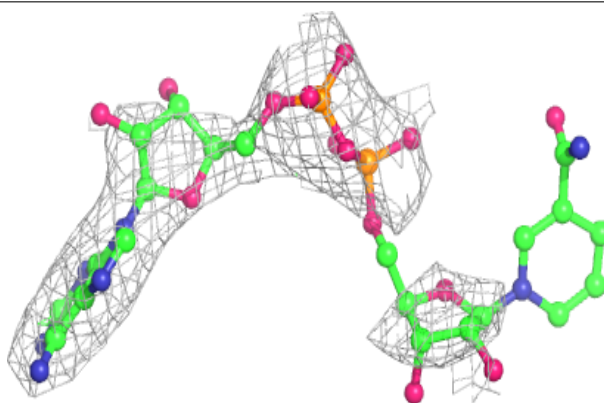


Electron density around ACO C 3001:

$2mF_o-DF_c$ (at 0.7 rmsd) in gray
 mF_o-DF_c (at 3 rmsd) in purple (negative)
and green (positive)

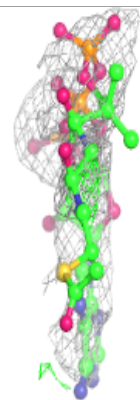
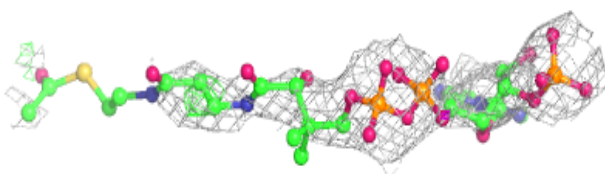
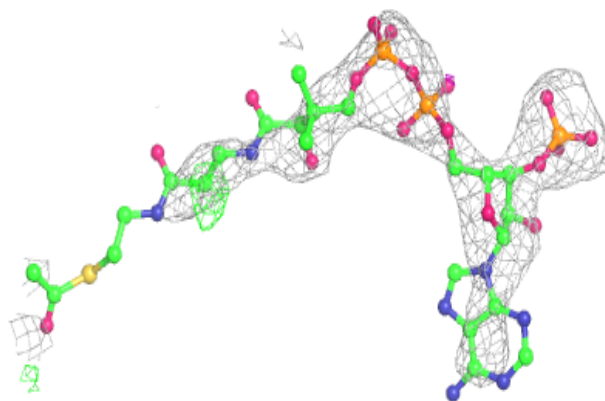
**Electron density around NAD B 2001:**

$2mF_o-DF_c$ (at 0.7 rmsd) in gray
 mF_o-DF_c (at 3 rmsd) in purple (negative)
and green (positive)

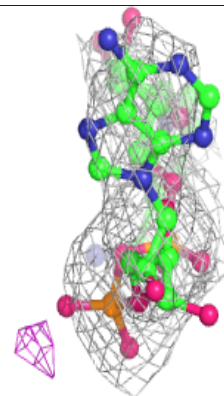
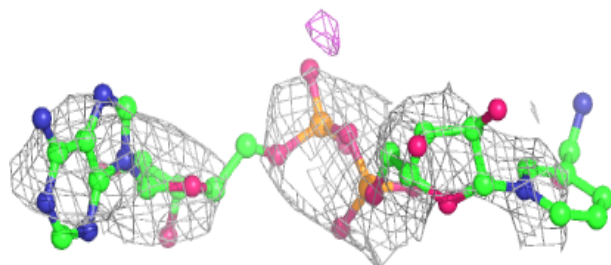
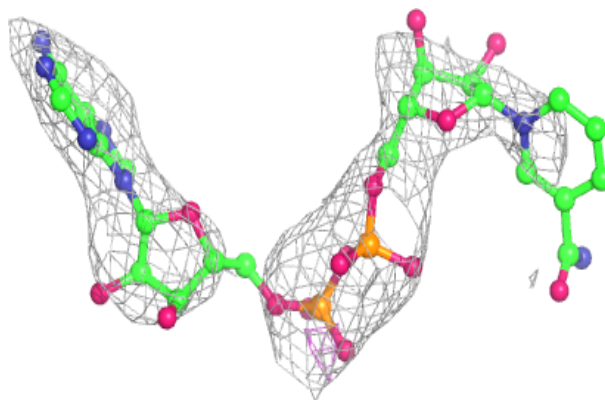


Electron density around ACO D 4001:

$2mF_o-DF_c$ (at 0.7 rmsd) in gray
 mF_o-DF_c (at 3 rmsd) in purple (negative)
and green (positive)

**Electron density around NAD A 1001:**

$2mF_o-DF_c$ (at 0.7 rmsd) in gray
 mF_o-DF_c (at 3 rmsd) in purple (negative)
and green (positive)



6.5 Other polymers [i](#)

There are no such residues in this entry.