



Full wwPDB X-ray Structure Validation Report ⓘ

Oct 16, 2023 – 08:57 AM EDT

PDB ID : 1VAF
Title : Inducible nitric oxide synthase oxygenase domain complexed with the inhibitor AR-R17477
Authors : Fedorov, R.; Vasan, R.; Ghosh, D.K.; Schlichting, I.
Deposited on : 2004-02-16
Resolution : 2.90 Å(reported)

This is a Full wwPDB X-ray Structure Validation Report for a publicly released PDB entry.

We welcome your comments at validation@mail.wwpdb.org

A user guide is available at

<https://www.wwpdb.org/validation/2017/XrayValidationReportHelp>

with specific help available everywhere you see the ⓘ symbol.

The types of validation reports are described at

<http://www.wwpdb.org/validation/2017/FAQs#types>.

The following versions of software and data (see [references ⓘ](#)) were used in the production of this report:

MolProbity : 4.02b-467
Mogul : 1.8.5 (274361), CSD as541be (2020)
Xtriage (Phenix) : 1.13
EDS : 2.36
buster-report : 1.1.7 (2018)
Percentile statistics : 20191225.v01 (using entries in the PDB archive December 25th 2019)
Refmac : 5.8.0158
CCP4 : 7.0.044 (Gargrove)
Ideal geometry (proteins) : Engh & Huber (2001)
Ideal geometry (DNA, RNA) : Parkinson et al. (1996)
Validation Pipeline (wwPDB-VP) : 2.36

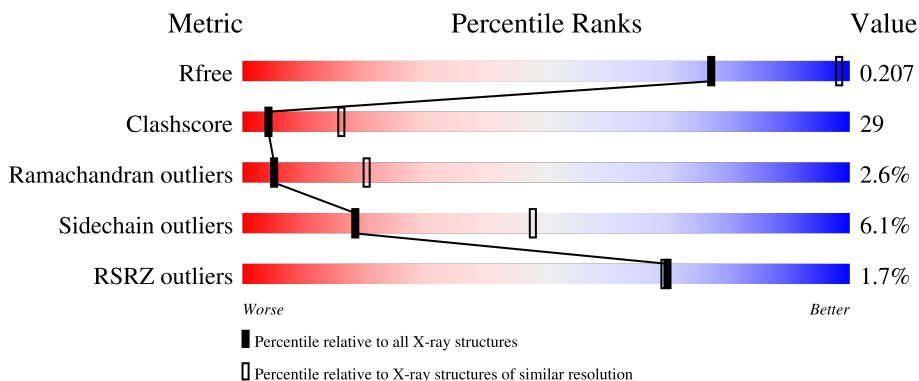
1 Overall quality at a glance

The following experimental techniques were used to determine the structure:

X-RAY DIFFRACTION

The reported resolution of this entry is 2.90 Å.

Percentile scores (ranging between 0-100) for global validation metrics of the entry are shown in the following graphic. The table shows the number of entries on which the scores are based.



Metric	Whole archive (#Entries)	Similar resolution (#Entries, resolution range(Å))
R_{free}	130704	1957 (2.90-2.90)
Clashscore	141614	2172 (2.90-2.90)
Ramachandran outliers	138981	2115 (2.90-2.90)
Sidechain outliers	138945	2117 (2.90-2.90)
RSRZ outliers	127900	1906 (2.90-2.90)

The table below summarises the geometric issues observed across the polymeric chains and their fit to the electron density. The red, orange, yellow and green segments of the lower bar indicate the fraction of residues that contain outliers for ≥ 3 , 2, 1 and 0 types of geometric quality criteria respectively. A grey segment represents the fraction of residues that are not modelled. The numeric value for each fraction is indicated below the corresponding segment, with a dot representing fractions $\leq 5\%$. The upper red bar (where present) indicates the fraction of residues that have poor fit to the electron density. The numeric value is given above the bar.

Mol	Chain	Length	Quality of chain
1	A	419	
1	B	419	

The following table lists non-polymeric compounds, carbohydrate monomers and non-standard residues in protein, DNA, RNA chains that are outliers for geometric or electron-density-fit criteria:

Mol	Type	Chain	Res	Chirality	Geometry	Clashes	Electron density
5	ARR	A	902[B]	-	-	X	-
5	ARR	B	903[A]	-	-	-	X
5	ARR	B	903[B]	-	-	X	X

2 Entry composition [i](#)

There are 6 unique types of molecules in this entry. The entry contains 7233 atoms, of which 0 are hydrogens and 0 are deuteriums.

In the tables below, the ZeroOcc column contains the number of atoms modelled with zero occupancy, the AltConf column contains the number of residues with at least one atom in alternate conformation and the Trace column contains the number of residues modelled with at most 2 atoms.

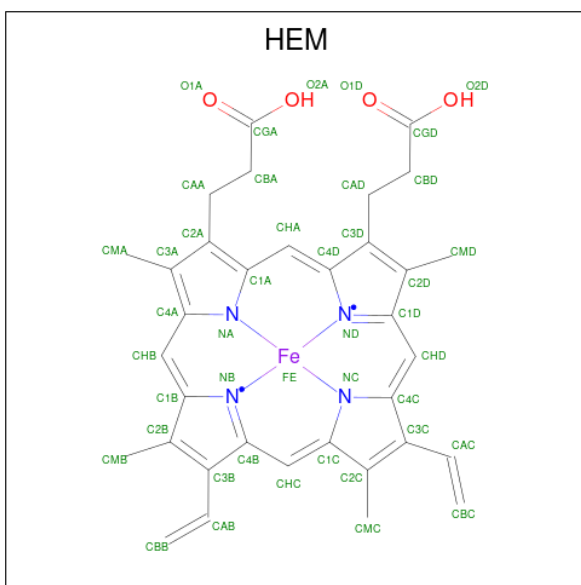
- Molecule 1 is a protein called Nitric oxide synthase, inducible.

Mol	Chain	Residues	Atoms					ZeroOcc	AltConf	Trace
			Total	C	N	O	S			
1	A	419	Total 3415	C 2189	N 588	O 617	S 21	0	0	0
1	B	419	Total 3415	C 2189	N 588	O 617	S 21	0	0	0

- Molecule 2 is ZINC ION (three-letter code: ZN) (formula: Zn).

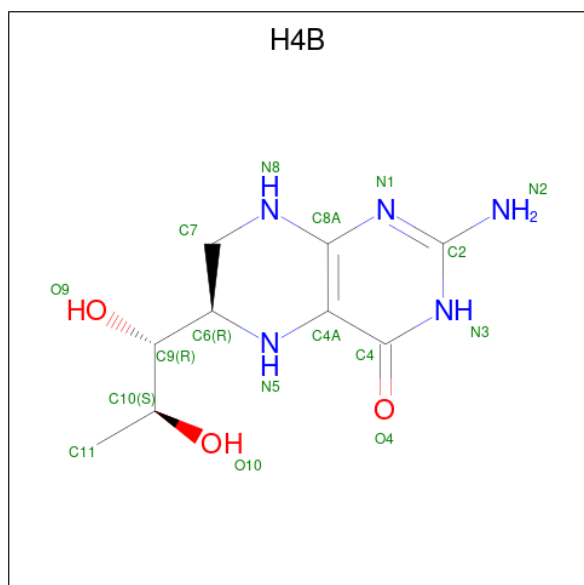
Mol	Chain	Residues	Atoms		ZeroOcc	AltConf
2	A	1	Total 1	Zn 1	0	0
2	B	1	Total 1	Zn 1	0	0

- Molecule 3 is PROTOPORPHYRIN IX CONTAINING FE (three-letter code: HEM) (formula: $C_{34}H_{32}FeN_4O_4$).



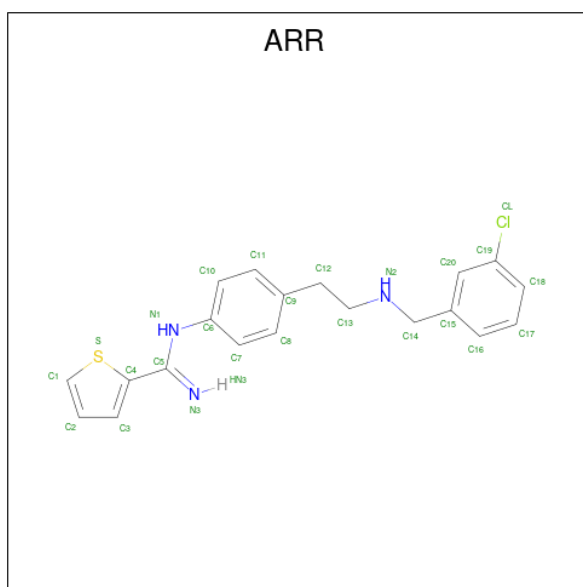
Mol	Chain	Residues	Atoms				ZeroOcc	AltConf	
3	A	1	Total	C	Fe	N	O	0	0
			43	34	1	4	4		
3	B	1	Total	C	Fe	N	O	0	0
			43	34	1	4	4		

- Molecule 4 is 5,6,7,8-TETRAHYDROBIOPTERIN (three-letter code: H4B) (formula: $C_9H_{15}N_5O_3$).



Mol	Chain	Residues	Atoms				ZeroOcc	AltConf
4	A	1	Total	C	N	O	0	0
			17	9	5	3		
4	B	1	Total	C	N	O	0	0
			17	9	5	3		

- Molecule 5 is N-(4-{2-[(3-CHLOROBENZYL)AMINO]ETHYL}PHENYL)THIOPHENE-2-CARBOXIMIDAMIDE (three-letter code: ARR) (formula: $C_{20}H_{20}ClN_3S$).



Mol	Chain	Residues	Atoms				ZeroOcc	AltConf	
			Total	C	Cl	N			S
5	A	1	50	40	2	6	2	0	1
5	B	1	50	40	2	6	2	0	1

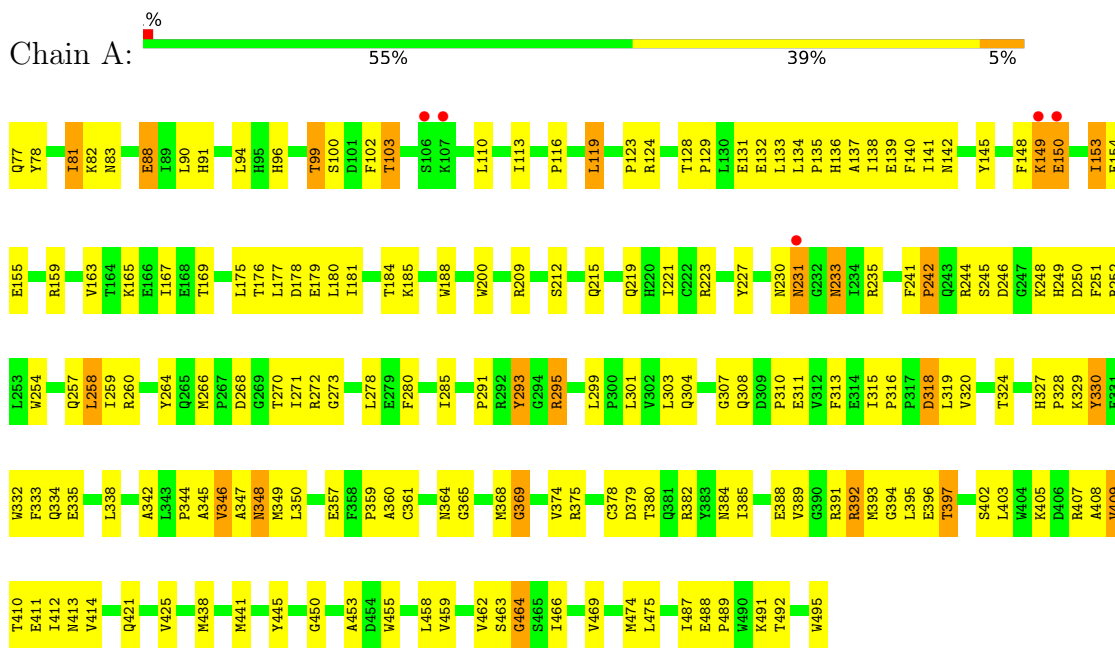
- Molecule 6 is water.

Mol	Chain	Residues	Atoms		ZeroOcc	AltConf
			Total	O		
6	A	89	89	89	0	0
6	B	92	92	92	0	0

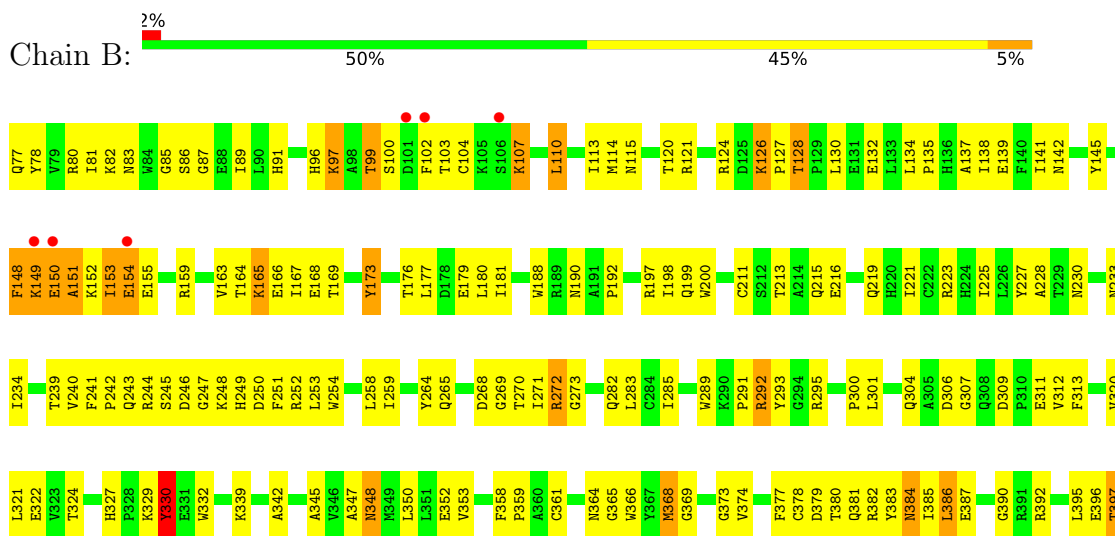
3 Residue-property plots [i](#)

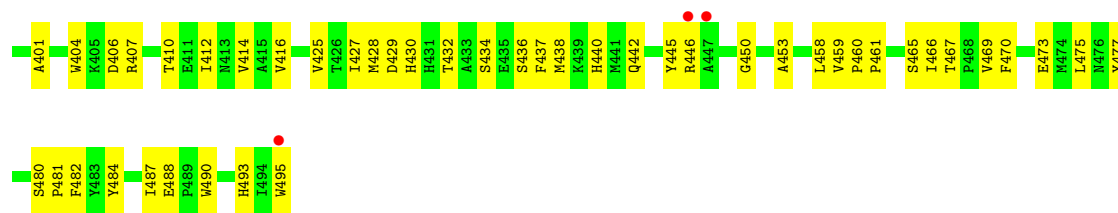
These plots are drawn for all protein, RNA, DNA and oligosaccharide chains in the entry. The first graphic for a chain summarises the proportions of the various outlier classes displayed in the second graphic. The second graphic shows the sequence view annotated by issues in geometry and electron density. Residues are color-coded according to the number of geometric quality criteria for which they contain at least one outlier: green = 0, yellow = 1, orange = 2 and red = 3 or more. A red dot above a residue indicates a poor fit to the electron density ($RSRZ > 2$). Stretches of 2 or more consecutive residues without any outlier are shown as a green connector. Residues present in the sample, but not in the model, are shown in grey.

- Molecule 1: Nitric oxide synthase, inducible



- Molecule 1: Nitric oxide synthase, inducible





4 Data and refinement statistics

Property	Value	Source
Space group	P 61 2 2	Depositor
Cell constants a, b, c, α , β , γ	216.34Å 216.34Å 117.83Å 90.00° 90.00° 120.00°	Depositor
Resolution (Å)	8.00 – 2.90 19.95 – 2.70	Depositor EDS
% Data completeness (in resolution range)	(Not available) (8.00-2.90) 98.1 (19.95-2.70)	Depositor EDS
R_{merge}	(Not available)	Depositor
R_{sym}	0.06	Depositor
$\langle I/\sigma(I) \rangle$ ¹	2.83 (at 2.71Å)	Xtrriage
Refinement program	CNS 1.0	Depositor
R, R_{free}	0.207 , 0.262 0.212 , 0.207	Depositor DCC
R_{free} test set	2218 reflections (5.05%)	wwPDB-VP
Wilson B-factor (Å ²)	67.5	Xtrriage
Anisotropy	0.215	Xtrriage
Bulk solvent k_{sol} (e/Å ³), B_{sol} (Å ²)	0.39 , 77.9	EDS
L-test for twinning ²	$\langle L \rangle = 0.49$, $\langle L^2 \rangle = 0.33$	Xtrriage
Estimated twinning fraction	No twinning to report.	Xtrriage
F_o, F_c correlation	0.94	EDS
Total number of atoms	7233	wwPDB-VP
Average B, all atoms (Å ²)	61.0	wwPDB-VP

Xtrriage's analysis on translational NCS is as follows: *The largest off-origin peak in the Patterson function is 2.27% of the height of the origin peak. No significant pseudotranslation is detected.*

¹Intensities estimated from amplitudes.

²Theoretical values of $\langle |L| \rangle$, $\langle L^2 \rangle$ for acentric reflections are 0.5, 0.333 respectively for untwinned datasets, and 0.375, 0.2 for perfectly twinned datasets.

5 Model quality [i](#)

5.1 Standard geometry [i](#)

Bond lengths and bond angles in the following residue types are not validated in this section: H4B, HEM, ZN, ARR

The Z score for a bond length (or angle) is the number of standard deviations the observed value is removed from the expected value. A bond length (or angle) with $|Z| > 5$ is considered an outlier worth inspection. RMSZ is the root-mean-square of all Z scores of the bond lengths (or angles).

Mol	Chain	Bond lengths		Bond angles	
		RMSZ	# Z >5	RMSZ	# Z >5
1	A	0.43	0/3515	0.66	1/4778 (0.0%)
1	B	0.42	0/3515	0.63	1/4778 (0.0%)
All	All	0.43	0/7030	0.65	2/9556 (0.0%)

There are no bond length outliers.

All (2) bond angle outliers are listed below:

Mol	Chain	Res	Type	Atoms	Z	Observed(°)	Ideal(°)
1	A	365	GLY	N-CA-C	-6.26	97.44	113.10
1	B	365	GLY	N-CA-C	-5.29	99.87	113.10

There are no chirality outliers.

There are no planarity outliers.

5.2 Too-close contacts [i](#)

In the following table, the Non-H and H(model) columns list the number of non-hydrogen atoms and hydrogen atoms in the chain respectively. The H(added) column lists the number of hydrogen atoms added and optimized by MolProbity. The Clashes column lists the number of clashes within the asymmetric unit, whereas Symm-Clashes lists symmetry-related clashes.

Mol	Chain	Non-H	H(model)	H(added)	Clashes	Symm-Clashes
1	A	3415	0	3312	175	0
1	B	3415	0	3312	207	0
2	A	1	0	0	0	0
2	B	1	0	0	0	0
3	A	43	0	30	0	0
3	B	43	0	30	1	0
4	A	17	0	15	0	0

Continued on next page...

Continued from previous page...

Mol	Chain	Non-H	H(model)	H(added)	Clashes	Symm-Clashes
4	B	17	0	15	0	0
5	A	50	0	38	13	3
5	B	50	0	38	20	0
6	A	89	0	0	4	3
6	B	92	0	0	3	0
All	All	7233	0	6790	406	3

The all-atom clashscore is defined as the number of clashes found per 1000 atoms (including hydrogen atoms). The all-atom clashscore for this structure is 29.

All (406) close contacts within the same asymmetric unit are listed below, sorted by their clash magnitude.

Atom-1	Atom-2	Interatomic distance (Å)	Clash overlap (Å)
1:B:254:TRP:HE1	1:B:304:GLN:NE2	1.49	1.09
1:B:153:ILE:HD12	1:B:153:ILE:H	1.20	1.06
1:A:271:ILE:HD13	1:A:278:LEU:HD11	1.37	1.05
1:A:153:ILE:HD12	1:A:153:ILE:H	1.18	1.05
5:B:903[A]:ARR:C10	5:B:903[A]:ARR:H3	1.86	1.05
5:B:903[B]:ARR:H3	5:B:903[B]:ARR:C10	1.86	1.05
5:A:902[A]:ARR:C10	5:A:902[A]:ARR:H3	1.86	1.04
5:A:902[B]:ARR:H3	5:A:902[B]:ARR:C10	1.86	1.04
5:A:902[B]:ARR:H141	6:A:994:HOH:O	1.57	1.00
1:B:77:GLN:HG3	1:B:78:TYR:H	1.27	0.96
1:B:124:ARG:HH12	1:B:128:THR:HB	1.32	0.95
1:B:83:ASN:ND2	1:B:86:SER:H	1.67	0.93
1:B:254:TRP:HE1	1:B:304:GLN:HE21	1.15	0.90
1:B:330:TYR:HB3	1:B:332:TRP:NE1	1.86	0.90
1:A:154:GLU:HG2	1:A:155:GLU:H	1.35	0.90
1:A:273:GLY:HA2	1:A:295:ARG:HA	1.56	0.88
1:B:124:ARG:NH1	1:B:128:THR:HB	1.90	0.87
1:A:230:ASN:HD22	1:A:235:ARG:CZ	1.88	0.86
5:A:902[A]:ARR:C3	5:A:902[A]:ARR:H10	2.06	0.86
5:A:902[B]:ARR:H10	5:A:902[B]:ARR:C3	2.06	0.86
5:B:903[A]:ARR:C3	5:B:903[A]:ARR:H10	2.05	0.86
5:B:903[B]:ARR:H10	5:B:903[B]:ARR:C3	2.05	0.86
1:A:342:ALA:HB1	1:A:425:VAL:HG11	1.60	0.82
5:A:902[A]:ARR:C10	5:A:902[A]:ARR:C3	2.58	0.81
5:A:902[B]:ARR:C10	5:A:902[B]:ARR:C3	2.58	0.81
1:B:230:ASN:HD22	1:B:233:ASN:HB3	1.44	0.81
5:B:903[A]:ARR:C10	5:B:903[A]:ARR:C3	2.58	0.81
5:B:903[B]:ARR:C10	5:B:903[B]:ARR:C3	2.58	0.81

Continued on next page...

Continued from previous page...

Atom-1	Atom-2	Interatomic distance (Å)	Clash overlap (Å)
1:B:289:TRP:HZ2	1:B:292:ARG:HH21	1.27	0.81
1:A:149:LYS:O	1:A:150:GLU:HG2	1.82	0.79
1:A:330:TYR:HB3	1:A:332:TRP:NE1	1.97	0.79
5:A:902[A]:ARR:H3	5:A:902[A]:ARR:H10	1.63	0.79
5:A:902[B]:ARR:H3	5:A:902[B]:ARR:H10	1.63	0.79
5:B:903[A]:ARR:H3	5:B:903[A]:ARR:H10	1.63	0.79
5:B:903[B]:ARR:H3	5:B:903[B]:ARR:H10	1.63	0.79
1:B:330:TYR:HD1	1:B:330:TYR:H	1.29	0.78
1:A:153:ILE:HD12	1:A:153:ILE:N	1.98	0.77
1:A:138:ILE:HG22	1:A:142:ASN:HD21	1.51	0.75
1:A:176:THR:OG1	1:A:179:GLU:HG3	1.87	0.75
1:B:272:ARG:HH11	1:B:272:ARG:HB2	1.53	0.74
1:B:330:TYR:HB3	1:B:332:TRP:CE2	2.22	0.74
1:A:488:GLU:HG3	1:A:491:LYS:NZ	2.02	0.74
1:A:246:ASP:OD2	1:A:248:LYS:HB2	1.88	0.73
1:B:311:GLU:HB2	1:B:313:PHE:HE1	1.54	0.72
1:B:153:ILE:HD12	1:B:153:ILE:N	2.00	0.71
1:A:153:ILE:H	1:A:153:ILE:CD1	1.95	0.71
1:B:148:PHE:HD1	1:B:148:PHE:H	1.38	0.70
1:A:154:GLU:HG2	1:A:155:GLU:N	2.06	0.70
1:B:230:ASN:ND2	1:B:233:ASN:HB3	2.06	0.70
1:A:230:ASN:HD22	1:A:235:ARG:NE	1.89	0.70
1:B:252:ARG:HD3	1:B:359:PRO:HB2	1.72	0.70
1:B:213:THR:OG1	1:B:216:GLU:HG3	1.91	0.69
1:B:107:LYS:NZ	1:B:107:LYS:HB3	2.08	0.69
1:A:330:TYR:HD1	1:A:332:TRP:CZ2	2.09	0.69
1:B:77:GLN:HG3	1:B:78:TYR:N	2.06	0.69
1:A:230:ASN:ND2	1:A:235:ARG:CZ	2.55	0.69
1:A:149:LYS:NZ	1:A:150:GLU:HB3	2.08	0.69
1:B:81:ILE:HD11	1:B:475:LEU:HD13	1.74	0.68
1:B:77:GLN:CG	1:B:78:TYR:H	2.05	0.68
1:A:266:MET:HB2	1:A:270:THR:HB	1.76	0.67
1:A:285:ILE:HD11	1:A:291:PRO:HB3	1.77	0.67
1:B:114:MET:HE3	5:B:903[B]:ARR:H16	1.77	0.67
1:B:285:ILE:HD11	1:B:291:PRO:HB3	1.76	0.67
1:A:138:ILE:HG22	1:A:142:ASN:ND2	2.10	0.67
1:A:266:MET:CE	1:A:272:ARG:HH11	2.08	0.67
1:B:342:ALA:HB1	1:B:425:VAL:HG11	1.76	0.67
1:B:410:THR:O	1:B:414:VAL:HG23	1.95	0.66
1:A:209:ARG:O	1:A:242:PRO:HG3	1.97	0.65
1:B:330:TYR:CD1	1:B:330:TYR:N	2.65	0.65

Continued on next page...

Continued from previous page...

Atom-1	Atom-2	Interatomic distance (Å)	Clash overlap (Å)
1:A:407:ARG:HG3	1:A:407:ARG:HH11	1.61	0.65
1:B:82:LYS:O	1:B:473:GLU:HG3	1.97	0.65
1:B:254:TRP:NE1	1:B:304:GLN:NE2	2.35	0.65
1:B:176:THR:OG1	1:B:179:GLU:HG3	1.97	0.64
1:B:459:VAL:HG22	1:B:469:VAL:HG23	1.79	0.64
1:A:259:ILE:HD13	1:A:320:VAL:HG13	1.80	0.64
1:B:292:ARG:HG2	1:B:292:ARG:HH11	1.62	0.64
1:A:488:GLU:HG3	1:A:491:LYS:HZ3	1.60	0.63
1:A:132:GLU:C	1:A:135:PRO:HD2	2.19	0.63
1:A:441:MET:O	1:A:445:TYR:HD1	1.82	0.63
1:A:438:MET:HE3	1:A:469:VAL:HA	1.80	0.62
1:B:271:ILE:HD13	6:B:1938:HOH:O	1.98	0.62
1:B:83:ASN:HD22	1:B:86:SER:H	1.47	0.62
1:B:300:PRO:HB2	1:B:312:VAL:HG13	1.81	0.62
1:A:81:ILE:HG22	1:A:90:LEU:HB2	1.82	0.62
1:A:134:LEU:O	1:A:138:ILE:HG12	1.99	0.61
1:A:271:ILE:HD13	1:A:278:LEU:CD1	2.24	0.61
1:A:116:PRO:HG2	1:A:119:LEU:HB2	1.81	0.61
1:B:198:ILE:HB	1:B:440:HIS:HB2	1.82	0.61
1:B:374:VAL:O	1:B:378:CYS:HB2	2.01	0.60
1:A:382:ARG:HG3	1:A:382:ARG:HH11	1.66	0.60
1:B:321:LEU:HD12	1:B:322:GLU:N	2.17	0.60
1:A:330:TYR:CD2	1:A:330:TYR:N	2.70	0.60
1:A:176:THR:HG23	1:A:179:GLU:OE1	2.02	0.60
1:A:304:GLN:HG3	1:A:308:GLN:O	2.02	0.60
1:A:330:TYR:N	1:A:330:TYR:HD2	1.99	0.59
1:A:223:ARG:HH11	1:A:223:ARG:HG2	1.67	0.59
1:A:244:ARG:HG3	1:A:250:ASP:OD1	2.02	0.59
1:A:393:MET:HE3	1:A:411:GLU:HG3	1.84	0.59
1:A:405:LYS:O	1:A:409:VAL:HG12	2.02	0.59
1:A:163:VAL:O	1:A:167:ILE:HG13	2.02	0.59
1:A:82:LYS:HG2	1:A:83:ASN:N	2.18	0.58
1:A:129:PRO:HB2	1:A:132:GLU:HG2	1.84	0.58
1:B:259:ILE:HD13	1:B:320:VAL:HG13	1.85	0.58
1:A:410:THR:O	1:A:414:VAL:HG23	2.04	0.58
1:B:252:ARG:CD	1:B:359:PRO:HB2	2.34	0.58
1:A:348:ASN:HD22	1:A:348:ASN:H	1.52	0.57
1:A:110:LEU:HD12	1:A:110:LEU:N	2.19	0.57
1:A:154:GLU:CD	1:A:154:GLU:H	2.07	0.57
1:A:260:ARG:HH11	1:A:260:ARG:HG2	1.68	0.57
1:B:254:TRP:CZ3	1:B:490:TRP:HB3	2.39	0.57

Continued on next page...

Continued from previous page...

Atom-1	Atom-2	Interatomic distance (Å)	Clash overlap (Å)
1:A:188:TRP:CE3	1:A:200:TRP:HA	2.40	0.57
1:B:152:LYS:HE2	1:B:155:GLU:CD	2.25	0.57
1:B:114:MET:CE	5:B:903[B]:ARR:C17	2.83	0.57
1:A:316:PRO:HD2	1:A:319:LEU:HD12	1.85	0.57
1:B:114:MET:HE1	5:B:903[B]:ARR:C17	2.34	0.57
1:A:389:VAL:O	1:A:393:MET:HG3	2.05	0.56
1:A:221:ILE:HG21	1:A:301:LEU:HD21	1.87	0.56
1:A:438:MET:HE2	1:A:469:VAL:HG22	1.87	0.56
1:B:248:LYS:HB3	1:B:248:LYS:NZ	2.20	0.56
1:B:330:TYR:HD2	1:B:332:TRP:HE1	1.52	0.56
5:B:903[B]:ARR:H141	6:B:1929:HOH:O	2.04	0.56
1:A:251:PHE:O	1:A:360:ALA:HB2	2.05	0.56
1:A:94:LEU:HB3	1:A:450:GLY:HA3	1.88	0.56
1:A:285:ILE:CD1	1:A:291:PRO:HB3	2.36	0.56
1:A:330:TYR:HB3	1:A:332:TRP:CD1	2.40	0.56
1:B:102:PHE:CG	1:B:103:THR:N	2.74	0.56
1:B:252:ARG:HG3	1:B:252:ARG:HH11	1.71	0.56
1:B:120:THR:HG22	1:B:121:ARG:N	2.20	0.56
1:B:166:GLU:OE2	1:B:173:TYR:HA	2.06	0.55
1:A:264:TYR:CE2	1:A:293:TYR:HA	2.42	0.55
1:B:221:ILE:HG21	1:B:301:LEU:HD21	1.88	0.55
1:A:466:ILE:HG22	1:A:466:ILE:O	2.05	0.55
1:A:348:ASN:H	1:A:348:ASN:ND2	2.03	0.55
1:B:124:ARG:NH1	1:B:128:THR:CB	2.67	0.55
1:B:268:ASP:OD1	1:B:270:THR:HG23	2.05	0.55
1:B:480:SER:HA	1:B:481:PRO:C	2.26	0.55
1:A:330:TYR:HD1	1:A:332:TRP:HZ2	1.54	0.55
1:A:374:VAL:O	1:A:378:CYS:HB2	2.05	0.55
1:B:126:LYS:NZ	1:B:126:LYS:HB3	2.21	0.55
1:B:165:LYS:O	1:B:169:THR:HG23	2.07	0.55
1:B:249:HIS:HA	1:B:307:GLY:HA3	1.87	0.55
1:B:345:ALA:HB2	1:B:364:ASN:HB3	1.89	0.55
1:B:188:TRP:CE3	1:B:200:TRP:HA	2.42	0.55
1:A:77:GLN:O	1:A:96:HIS:CE1	2.60	0.55
1:B:77:GLN:O	1:B:96:HIS:HE1	1.91	0.55
1:B:253:LEU:HD22	1:B:347:ALA:HB1	1.88	0.54
1:A:233:ASN:C	1:A:233:ASN:HD22	2.11	0.54
1:B:164:THR:O	1:B:168:GLU:HG3	2.07	0.54
1:A:385:ILE:O	1:A:389:VAL:HG23	2.08	0.54
1:A:395:LEU:O	1:A:397:THR:N	2.35	0.53
1:B:153:ILE:H	1:B:153:ILE:CD1	1.93	0.53

Continued on next page...

Continued from previous page...

Atom-1	Atom-2	Interatomic distance (Å)	Clash overlap (Å)
1:A:230:ASN:HB3	1:A:233:ASN:O	2.08	0.53
1:B:137:ALA:O	1:B:141:ILE:HG12	2.08	0.53
1:B:350:LEU:C	1:B:350:LEU:HD23	2.29	0.53
1:A:266:MET:HE2	1:A:272:ARG:HH11	1.73	0.53
1:B:241:PHE:HB3	1:B:242:PRO:HD2	1.90	0.53
1:B:283:LEU:C	1:B:283:LEU:HD23	2.29	0.53
1:A:310:PRO:HD2	1:A:495:TRP:CZ3	2.43	0.53
1:B:407:ARG:HG3	1:B:407:ARG:HH11	1.72	0.53
1:A:149:LYS:HZ1	1:A:150:GLU:HB3	1.74	0.53
1:B:273:GLY:HA2	1:B:295:ARG:HG3	1.90	0.53
1:B:152:LYS:HE2	1:B:155:GLU:OE2	2.09	0.53
1:B:114:MET:CE	5:B:903[B]:ARR:H17	2.38	0.53
1:A:88:GLU:OE1	6:A:957:HOH:O	2.19	0.53
1:A:215:GLN:HG3	1:A:219:GLN:NE2	2.24	0.52
1:A:252:ARG:HD3	1:A:359:PRO:HB2	1.91	0.52
1:A:380:THR:HA	1:A:384:ASN:HB2	1.90	0.52
1:B:190:ASN:O	1:B:192:PRO:HD3	2.09	0.52
1:B:453:ALA:HB1	1:B:458:LEU:CD1	2.40	0.52
1:A:270:THR:HG22	1:A:271:ILE:N	2.24	0.52
1:B:104:CYS:HA	1:B:110:LEU:CD1	2.38	0.52
1:A:138:ILE:O	1:A:142:ASN:ND2	2.43	0.52
1:A:165:LYS:O	1:A:169:THR:HG23	2.10	0.52
1:B:215:GLN:HG3	1:B:219:GLN:HE21	1.73	0.52
1:B:244:ARG:HG3	1:B:250:ASP:OD1	2.09	0.52
1:B:114:MET:CE	5:B:903[B]:ARR:C16	2.87	0.52
1:A:254:TRP:CE2	1:A:489:PRO:HB2	2.45	0.52
1:B:159:ARG:O	1:B:163:VAL:HG23	2.10	0.52
1:A:78:TYR:CG	1:A:91:HIS:HB3	2.44	0.52
1:A:295:ARG:NH2	1:A:338:LEU:HD23	2.25	0.52
1:B:243:GLN:HB3	1:B:358:PHE:CE2	2.44	0.52
1:A:145:TYR:HA	1:A:148:PHE:CD2	2.45	0.52
1:B:134:LEU:O	1:B:138:ILE:HG13	2.10	0.52
1:B:300:PRO:HB2	1:B:312:VAL:CG1	2.39	0.52
1:B:230:ASN:HB3	1:B:233:ASN:O	2.09	0.52
1:B:163:VAL:O	1:B:167:ILE:HG13	2.10	0.51
1:B:381:GLN:O	1:B:382:ARG:HD2	2.10	0.51
5:A:902[B]:ARR:H132	5:A:902[B]:ARR:H20	1.92	0.51
1:A:159:ARG:O	1:A:163:VAL:HG23	2.10	0.51
1:A:258:LEU:HD13	1:A:347:ALA:HB2	1.92	0.51
1:A:264:TYR:CD2	1:A:293:TYR:HA	2.45	0.51
1:B:78:TYR:CE1	1:B:91:HIS:HD2	2.29	0.51

Continued on next page...

Continued from previous page...

Atom-1	Atom-2	Interatomic distance (Å)	Clash overlap (Å)
1:B:114:MET:HE3	5:B:903[B]:ARR:C16	2.40	0.51
1:A:327:HIS:HB2	1:A:333:PHE:CD1	2.45	0.51
1:B:428:MET:CE	1:B:432:THR:HG22	2.41	0.51
1:B:329:LYS:HB2	1:B:330:TYR:CD1	2.45	0.51
1:A:389:VAL:HG21	1:A:412:ILE:HD11	1.92	0.51
1:B:81:ILE:HD11	1:B:475:LEU:CD1	2.41	0.51
1:A:382:ARG:HG3	1:A:382:ARG:NH1	2.26	0.51
1:B:245:SER:OG	1:B:246:ASP:N	2.42	0.51
5:B:903[B]:ARR:H132	5:B:903[B]:ARR:H20	1.92	0.51
1:B:148:PHE:CD1	1:B:148:PHE:N	2.79	0.50
1:B:197:ARG:C	1:B:199:GLN:H	2.13	0.50
1:B:254:TRP:HE1	1:B:304:GLN:HE22	1.51	0.50
1:B:254:TRP:HZ3	1:B:283:LEU:HD11	1.74	0.50
1:B:77:GLN:HA	1:B:77:GLN:OE1	2.12	0.50
1:B:434:SER:OG	1:B:467:THR:HB	2.11	0.50
1:A:129:PRO:HB3	1:A:131:GLU:CD	2.32	0.50
1:B:292:ARG:HG2	1:B:292:ARG:NH1	2.26	0.50
1:A:397:THR:O	1:A:397:THR:HG22	2.11	0.50
1:B:154:GLU:OE2	1:B:155:GLU:HG3	2.12	0.50
1:A:455:TRP:O	1:A:459:VAL:HG23	2.11	0.50
1:A:462:VAL:O	1:A:463:SER:HB2	2.10	0.50
1:A:249:HIS:HA	1:A:307:GLY:HA3	1.93	0.50
1:A:332:TRP:CE3	1:A:392:ARG:HD3	2.46	0.50
1:B:149:LYS:HD2	1:B:149:LYS:O	2.11	0.50
1:B:130:LEU:C	1:B:130:LEU:HD23	2.32	0.49
1:B:438:MET:HE3	1:B:469:VAL:HA	1.94	0.49
1:B:412:ILE:O	1:B:416:VAL:HG23	2.11	0.49
1:A:188:TRP:CZ3	1:A:200:TRP:HA	2.48	0.49
1:A:334:GLN:H	1:A:334:GLN:NE2	2.10	0.49
1:B:126:LYS:HG3	1:B:127:PRO:O	2.12	0.49
1:A:378:CYS:O	1:A:379:ASP:C	2.51	0.49
1:B:330:TYR:HD2	1:B:332:TRP:NE1	2.10	0.49
1:A:453:ALA:HB1	1:A:458:LEU:CD1	2.42	0.49
1:A:252:ARG:CD	1:A:359:PRO:HB2	2.42	0.49
1:B:383:TYR:O	1:B:385:ILE:N	2.45	0.49
1:B:385:ILE:HD11	1:B:412:ILE:HD13	1.94	0.49
1:A:81:ILE:CD1	1:A:475:LEU:HD13	2.43	0.48
1:B:252:ARG:HB2	1:B:304:GLN:NE2	2.29	0.48
1:B:445:TYR:CE2	1:B:450:GLY:HA2	2.48	0.48
1:A:397:THR:O	1:A:397:THR:CG2	2.61	0.48
1:B:475:LEU:HB3	1:B:477:TYR:CE1	2.48	0.48

Continued on next page...

Continued from previous page...

Atom-1	Atom-2	Interatomic distance (Å)	Clash overlap (Å)
1:A:241:PHE:HB3	1:A:242:PRO:HD2	1.96	0.48
1:A:124:ARG:HB3	1:A:244:ARG:HD3	1.95	0.48
1:B:378:CYS:SG	1:B:386:LEU:HD23	2.53	0.48
1:A:348:ASN:HD22	1:A:348:ASN:N	2.09	0.48
1:A:338:LEU:HD11	1:A:385:ILE:CD1	2.44	0.48
1:B:466:ILE:O	1:B:466:ILE:HG22	2.14	0.48
1:B:177:LEU:O	1:B:181:ILE:HG13	2.14	0.48
1:A:181:ILE:HG22	1:A:185:LYS:HE3	1.96	0.47
1:B:221:ILE:O	1:B:225:ILE:HG13	2.13	0.47
1:B:241:PHE:HB3	1:B:242:PRO:CD	2.44	0.47
1:B:366:TRP:CZ2	3:B:900:HEM:HBB1	2.49	0.47
1:A:223:ARG:HH11	1:A:223:ARG:CG	2.27	0.47
1:B:248:LYS:HB3	1:B:248:LYS:HZ3	1.79	0.47
1:B:311:GLU:HB2	1:B:313:PHE:CE1	2.44	0.47
1:B:475:LEU:HB3	1:B:477:TYR:HE1	1.78	0.47
1:A:330:TYR:O	1:A:333:PHE:HB2	2.14	0.47
1:B:387:GLU:OE1	1:B:397:THR:HG21	2.14	0.47
1:B:342:ALA:CB	1:B:425:VAL:HG11	2.42	0.47
1:B:138:ILE:O	1:B:142:ASN:ND2	2.48	0.47
1:B:83:ASN:C	1:B:85:GLY:H	2.18	0.47
1:B:211:CYS:SG	1:B:216:GLU:HB2	2.54	0.47
1:B:289:TRP:HZ2	1:B:292:ARG:NH2	2.05	0.47
1:B:379:ASP:CB	1:B:382:ARG:HG2	2.45	0.47
1:A:301:LEU:CD1	1:A:315:ILE:HD11	2.45	0.47
1:B:215:GLN:HG3	1:B:219:GLN:NE2	2.30	0.47
1:B:271:ILE:N	1:B:271:ILE:HD12	2.30	0.47
1:B:461:PRO:HD3	6:B:1932:HOH:O	2.14	0.47
1:A:318:ASP:OD2	1:A:318:ASP:N	2.47	0.47
1:B:254:TRP:CZ3	1:B:283:LEU:HD11	2.49	0.47
1:B:285:ILE:HG12	1:B:291:PRO:HD3	1.96	0.47
1:A:180:LEU:O	1:A:184:THR:HG23	2.15	0.46
1:A:311:GLU:HB2	1:A:313:PHE:HE1	1.80	0.46
1:B:445:TYR:HA	1:B:450:GLY:H	1.80	0.46
1:A:233:ASN:C	1:A:233:ASN:ND2	2.65	0.46
1:B:120:THR:CG2	1:B:121:ARG:N	2.78	0.46
1:B:134:LEU:O	1:B:134:LEU:HD12	2.15	0.46
1:B:332:TRP:CZ3	1:B:392:ARG:HB2	2.49	0.46
1:A:258:LEU:HD22	1:A:345:ALA:CB	2.45	0.46
1:A:375:ARG:O	1:A:379:ASP:HB2	2.16	0.46
1:B:145:TYR:HA	1:B:148:PHE:CE1	2.50	0.46
1:A:176:THR:HG23	1:A:179:GLU:CD	2.35	0.46

Continued on next page...

Continued from previous page...

Atom-1	Atom-2	Interatomic distance (Å)	Clash overlap (Å)
1:B:227:TYR:CD1	1:B:227:TYR:C	2.89	0.46
1:A:230:ASN:OD1	1:A:230:ASN:O	2.33	0.46
1:B:382:ARG:HG3	1:B:382:ARG:HH11	1.81	0.46
1:A:177:LEU:O	1:A:181:ILE:HG13	2.16	0.46
1:A:295:ARG:NH2	1:A:338:LEU:CD2	2.78	0.46
1:B:197:ARG:C	1:B:199:GLN:N	2.69	0.46
1:B:379:ASP:HB2	1:B:382:ARG:CG	2.46	0.46
1:B:107:LYS:HB3	1:B:107:LYS:HZ3	1.80	0.46
1:B:247:GLY:HA2	1:B:250:ASP:OD1	2.15	0.45
1:B:429:ASP:OD2	1:B:432:THR:HB	2.15	0.45
1:A:227:TYR:CD1	1:A:227:TYR:C	2.88	0.45
1:A:244:ARG:NH1	1:A:357:GLU:OE2	2.49	0.45
1:B:115:ASN:OD1	5:B:903[A]:ARR:H17	2.16	0.45
1:B:437:PHE:O	1:B:440:HIS:HB3	2.15	0.45
1:A:342:ALA:CB	1:A:425:VAL:HG11	2.38	0.45
1:B:272:ARG:HH11	1:B:272:ARG:CB	2.26	0.45
1:A:140:PHE:HE2	1:A:175:LEU:HD22	1.82	0.45
1:A:369:GLY:HA3	6:A:1035:HOH:O	2.15	0.45
1:B:151:ALA:O	1:B:152:LYS:HG3	2.17	0.45
1:A:134:LEU:N	1:A:135:PRO:CD	2.79	0.45
1:A:332:TRP:CE3	1:A:392:ARG:HB3	2.51	0.45
1:A:215:GLN:HG3	1:A:219:GLN:HE22	1.81	0.45
1:A:327:HIS:C	1:A:329:LYS:H	2.19	0.45
1:B:252:ARG:HG3	1:B:252:ARG:NH1	2.32	0.45
1:A:303:LEU:O	1:A:310:PRO:HA	2.17	0.45
1:A:280:PHE:HD2	1:A:299:LEU:HD13	1.82	0.45
1:A:348:ASN:ND2	1:A:348:ASN:N	2.63	0.45
1:B:427:ILE:HG12	1:B:428:MET:N	2.32	0.45
1:A:257:GLN:HA	1:A:345:ALA:O	2.17	0.44
1:B:78:TYR:CZ	1:B:91:HIS:HD2	2.34	0.44
1:B:309:ASP:OD1	1:B:493:HIS:NE2	2.49	0.44
5:B:903[A]:ARR:H3	5:B:903[A]:ARR:C6	2.45	0.44
5:B:903[B]:ARR:H3	5:B:903[B]:ARR:C6	2.45	0.44
1:A:463:SER:O	1:A:464:GLY:C	2.54	0.44
1:B:330:TYR:CD2	1:B:332:TRP:NE1	2.85	0.44
1:A:133:LEU:O	1:A:133:LEU:HD23	2.17	0.44
1:B:149:LYS:HE3	1:B:150:GLU:HB3	2.00	0.44
1:B:239:THR:O	1:B:361:CYS:HA	2.18	0.44
1:B:329:LYS:HB2	1:B:330:TYR:HD1	1.82	0.44
1:B:430:HIS:O	1:B:434:SER:HB2	2.18	0.44
1:A:181:ILE:CG2	1:A:185:LYS:HE3	2.48	0.44

Continued on next page...

Continued from previous page...

Atom-1	Atom-2	Interatomic distance (Å)	Clash overlap (Å)
1:A:391:ARG:C	1:A:393:MET:H	2.21	0.44
1:B:373:GLY:HA2	1:B:416:VAL:HG21	1.99	0.44
1:B:438:MET:HE2	1:B:469:VAL:HG12	1.99	0.44
1:B:78:TYR:CD1	1:B:78:TYR:C	2.90	0.44
1:A:231:ASN:HB3	6:A:1025:HOH:O	2.18	0.44
1:A:402:SER:O	1:A:403:LEU:HB2	2.17	0.44
1:A:487:ILE:O	1:A:488:GLU:C	2.56	0.44
5:A:902[A]:ARR:H3	5:A:902[A]:ARR:C6	2.45	0.44
5:A:902[B]:ARR:H3	5:A:902[B]:ARR:C6	2.45	0.44
1:B:348:ASN:C	1:B:348:ASN:HD22	2.20	0.44
1:A:330:TYR:HB3	1:A:332:TRP:CE2	2.52	0.43
1:B:330:TYR:HB3	1:B:332:TRP:CD1	2.53	0.43
1:B:332:TRP:CE3	1:B:392:ARG:HD2	2.53	0.43
1:B:397:THR:HA	1:B:404:TRP:CE2	2.53	0.43
1:B:493:HIS:HD2	1:B:495:TRP:CE2	2.36	0.43
1:A:453:ALA:HB3	1:A:474:MET:HB3	1.99	0.43
1:B:342:ALA:HB1	1:B:425:VAL:CG1	2.45	0.43
1:B:380:THR:HA	1:B:384:ASN:ND2	2.33	0.43
1:A:438:MET:CE	1:A:469:VAL:HG22	2.48	0.43
1:B:110:LEU:O	1:B:113:ILE:HG12	2.19	0.43
1:B:107:LYS:HB3	1:B:107:LYS:HZ2	1.81	0.43
1:B:330:TYR:CD2	1:B:332:TRP:CZ2	3.07	0.43
1:B:80:ARG:CZ	1:B:89:ILE:HG21	2.48	0.43
1:B:83:ASN:ND2	1:B:86:SER:N	2.50	0.43
1:B:132:GLU:C	1:B:135:PRO:HD2	2.39	0.43
1:B:487:ILE:O	1:B:488:GLU:C	2.56	0.43
1:B:97:LYS:N	1:B:97:LYS:HD2	2.34	0.43
1:A:131:GLU:HG2	1:A:132:GLU:N	2.34	0.43
1:A:332:TRP:HA	1:A:335:GLU:OE2	2.19	0.43
1:B:379:ASP:HB2	1:B:382:ARG:HG2	2.00	0.43
1:B:465:SER:HA	1:B:470:PHE:CD1	2.53	0.43
1:A:99:THR:HG22	1:A:100:SER:N	2.33	0.43
1:B:163:VAL:HG13	1:B:173:TYR:CD2	2.54	0.42
1:B:352:GLU:O	1:B:481:PRO:HA	2.19	0.42
1:B:368:MET:O	1:B:369:GLY:C	2.57	0.42
1:A:82:LYS:CG	1:A:83:ASN:N	2.82	0.42
1:A:270:THR:CG2	1:A:271:ILE:N	2.81	0.42
1:B:428:MET:HE2	1:B:432:THR:HG22	2.00	0.42
1:B:459:VAL:HA	1:B:460:PRO:HD3	1.90	0.42
1:A:136:HIS:O	1:A:139:GLU:HB3	2.19	0.42
1:A:145:TYR:HA	1:A:148:PHE:HD2	1.84	0.42

Continued on next page...

Continued from previous page...

Atom-1	Atom-2	Interatomic distance (Å)	Clash overlap (Å)
1:A:350:LEU:C	1:A:350:LEU:HD23	2.39	0.42
1:A:123:PRO:HG2	1:A:492:THR:HG21	2.02	0.42
1:B:83:ASN:O	1:B:87:GLY:N	2.50	0.42
1:A:132:GLU:O	1:A:135:PRO:HD2	2.18	0.42
1:A:393:MET:CE	1:A:411:GLU:HG3	2.50	0.42
1:B:264:TYR:CE2	1:B:293:TYR:HA	2.54	0.42
1:A:102:PHE:CD2	1:A:103:THR:N	2.78	0.42
1:B:99:THR:OG1	1:B:100:SER:N	2.52	0.42
1:B:469:VAL:HG23	1:B:470:PHE:N	2.35	0.42
1:B:282:GLN:O	1:B:285:ILE:HB	2.20	0.42
1:A:149:LYS:HZ2	1:A:150:GLU:HB3	1.85	0.42
1:B:104:CYS:HA	1:B:110:LEU:HD12	2.01	0.42
1:A:368:MET:O	1:A:369:GLY:C	2.56	0.42
1:A:102:PHE:CG	1:A:103:THR:N	2.88	0.41
1:A:349:MET:HB3	1:A:349:MET:HE2	1.96	0.41
1:B:322:GLU:OE2	1:B:339:LYS:HE2	2.20	0.41
1:B:395:LEU:O	1:B:397:THR:N	2.46	0.41
1:A:245:SER:OG	1:A:246:ASP:N	2.51	0.41
1:A:258:LEU:CD1	1:A:347:ALA:HB2	2.49	0.41
1:B:114:MET:HE1	5:B:903[B]:ARR:C16	2.50	0.41
1:B:180:LEU:HD11	1:B:240:VAL:HG21	2.02	0.41
1:A:311:GLU:HB2	1:A:313:PHE:CE1	2.56	0.41
1:A:421:GLN:HE21	1:A:421:GLN:HB2	1.62	0.41
1:B:77:GLN:O	1:B:96:HIS:CE1	2.73	0.41
1:B:130:LEU:HD23	1:B:130:LEU:O	2.21	0.41
1:B:482:PHE:HB3	1:B:484:TYR:CE2	2.55	0.41
1:A:266:MET:CE	1:A:272:ARG:HD3	2.51	0.41
1:B:151:ALA:C	1:B:152:LYS:HG3	2.40	0.41
1:B:251:PHE:CE1	1:B:306:ASP:N	2.88	0.41
1:A:223:ARG:CG	1:A:223:ARG:NH1	2.83	0.41
1:B:97:LYS:HD2	1:B:97:LYS:H	1.85	0.41
1:A:137:ALA:O	1:A:141:ILE:HG12	2.21	0.41
1:A:330:TYR:CE1	1:A:393:MET:HE3	2.56	0.41
1:A:342:ALA:HB1	1:A:425:VAL:CG1	2.42	0.41
1:A:391:ARG:O	1:A:394:GLY:N	2.40	0.41
1:B:301:LEU:HD12	1:B:301:LEU:HA	1.90	0.41
1:B:390:GLY:HA2	1:B:395:LEU:HD12	2.02	0.41
1:B:228:ALA:O	1:B:234:ILE:HA	2.21	0.41
1:B:269:GLY:O	1:B:271:ILE:HD12	2.21	0.41
1:A:361:CYS:SG	1:A:361:CYS:O	2.79	0.40
1:B:377:PHE:HA	1:B:383:TYR:HB2	2.03	0.40

Continued on next page...

Continued from previous page...

Atom-1	Atom-2	Interatomic distance (Å)	Clash overlap (Å)
1:B:107:LYS:NZ	1:B:107:LYS:CB	2.83	0.40
1:A:110:LEU:HB3	1:A:113:ILE:CG1	2.51	0.40
1:A:345:ALA:HB2	1:A:364:ASN:HB3	2.02	0.40
1:B:198:ILE:HG21	1:B:436:SER:HB3	2.03	0.40
1:B:327:HIS:ND1	1:B:329:LYS:N	2.70	0.40
1:B:327:HIS:CE1	1:B:329:LYS:HB2	2.57	0.40
1:A:346:VAL:HG23	5:A:902[B]:ARR:H2	2.03	0.40
1:A:374:VAL:CG2	1:A:413:ASN:HD21	2.34	0.40
1:B:138:ILE:HG22	1:B:142:ASN:HD21	1.86	0.40

All (3) symmetry-related close contacts are listed below. The label for Atom-2 includes the symmetry operator and encoded unit-cell translations to be applied.

Atom-1	Atom-2	Interatomic distance (Å)	Clash overlap (Å)
5:A:902[B]:ARR:C17	6:A:1002:HOH:O[10_665]	0.71	1.49
5:A:902[B]:ARR:C18	6:A:1002:HOH:O[10_665]	1.34	0.86
5:A:902[B]:ARR:C16	6:A:1002:HOH:O[10_665]	2.04	0.16

5.3 Torsion angles [i](#)

5.3.1 Protein backbone [i](#)

In the following table, the Percentiles column shows the percent Ramachandran outliers of the chain as a percentile score with respect to all X-ray entries followed by that with respect to entries of similar resolution.

The Analysed column shows the number of residues for which the backbone conformation was analysed, and the total number of residues.

Mol	Chain	Analysed	Favoured	Allowed	Outliers	Percentiles
1	A	417/419 (100%)	359 (86%)	43 (10%)	15 (4%)	3 14
1	B	417/419 (100%)	366 (88%)	44 (11%)	7 (2%)	9 31
All	All	834/838 (100%)	725 (87%)	87 (10%)	22 (3%)	5 20

All (22) Ramachandran outliers are listed below:

Mol	Chain	Res	Type
1	A	99	THR
1	B	99	THR

Continued on next page...

Continued from previous page...

Mol	Chain	Res	Type
1	B	330	TYR
1	B	384	ASN
1	A	295	ARG
1	A	396	GLU
1	A	397	THR
1	A	464	GLY
1	B	151	ALA
1	A	150	GLU
1	A	268	ASP
1	B	396	GLU
1	A	293	TYR
1	A	392	ARG
1	A	408	ALA
1	B	397	THR
1	B	401	ALA
1	A	242	PRO
1	A	369	GLY
1	A	328	PRO
1	A	409	VAL
1	A	344	PRO

5.3.2 Protein sidechains [i](#)

In the following table, the Percentiles column shows the percent sidechain outliers of the chain as a percentile score with respect to all X-ray entries followed by that with respect to entries of similar resolution.

The Analysed column shows the number of residues for which the sidechain conformation was analysed, and the total number of residues.

Mol	Chain	Analysed	Rotameric	Outliers	Percentiles	
1	A	367/367 (100%)	349 (95%)	18 (5%)	25	57
1	B	367/367 (100%)	340 (93%)	27 (7%)	13	38
All	All	734/734 (100%)	689 (94%)	45 (6%)	18	48

All (45) residues with a non-rotameric sidechain are listed below:

Mol	Chain	Res	Type
1	A	81	ILE
1	A	88	GLU
1	A	103	THR

Continued on next page...

Continued from previous page...

Mol	Chain	Res	Type
1	A	119	LEU
1	A	128	THR
1	A	149	LYS
1	A	153	ILE
1	A	178	ASP
1	A	212	SER
1	A	231	ASN
1	A	233	ASN
1	A	258	LEU
1	A	318	ASP
1	A	324	THR
1	A	330	TYR
1	A	346	VAL
1	A	348	ASN
1	A	388	GLU
1	B	97	LYS
1	B	107	LYS
1	B	110	LEU
1	B	126	LYS
1	B	128	THR
1	B	139	GLU
1	B	148	PHE
1	B	149	LYS
1	B	150	GLU
1	B	153	ILE
1	B	154	GLU
1	B	165	LYS
1	B	173	TYR
1	B	223	ARG
1	B	258	LEU
1	B	265	GLN
1	B	272	ARG
1	B	292	ARG
1	B	324	THR
1	B	330	TYR
1	B	348	ASN
1	B	353	VAL
1	B	368	MET
1	B	386	LEU
1	B	406	ASP
1	B	442	GLN
1	B	446	ARG

Sometimes sidechains can be flipped to improve hydrogen bonding and reduce clashes. All (28) such sidechains are listed below:

Mol	Chain	Res	Type
1	A	96	HIS
1	A	174	GLN
1	A	202	ASN
1	A	215	GLN
1	A	219	GLN
1	A	230	ASN
1	A	231	ASN
1	A	233	ASN
1	A	249	HIS
1	A	257	GLN
1	A	334	GLN
1	A	348	ASN
1	A	421	GLN
1	B	83	ASN
1	B	91	HIS
1	B	96	HIS
1	B	142	ASN
1	B	174	GLN
1	B	215	GLN
1	B	219	GLN
1	B	230	ASN
1	B	231	ASN
1	B	282	GLN
1	B	304	GLN
1	B	334	GLN
1	B	348	ASN
1	B	384	ASN
1	B	413	ASN

5.3.3 RNA

There are no RNA molecules in this entry.

5.4 Non-standard residues in protein, DNA, RNA chains

There are no non-standard protein/DNA/RNA residues in this entry.

5.5 Carbohydrates [i](#)

There are no monosaccharides in this entry.

5.6 Ligand geometry [i](#)

Of 10 ligands modelled in this entry, 2 are monoatomic - leaving 8 for Mogul analysis.

In the following table, the Counts columns list the number of bonds (or angles) for which Mogul statistics could be retrieved, the number of bonds (or angles) that are observed in the model and the number of bonds (or angles) that are defined in the Chemical Component Dictionary. The Link column lists molecule types, if any, to which the group is linked. The Z score for a bond length (or angle) is the number of standard deviations the observed value is removed from the expected value. A bond length (or angle) with $|Z| > 2$ is considered an outlier worth inspection. RMSZ is the root-mean-square of all Z scores of the bond lengths (or angles).

Mol	Type	Chain	Res	Link	Bond lengths			Bond angles		
					Counts	RMSZ	# Z > 2	Counts	RMSZ	# Z > 2
3	HEM	A	900	1	41,50,50	1.35	4 (9%)	45,82,82	1.76	9 (20%)
5	ARR	B	903[B]	-	27,27,27	4.49	13 (48%)	26,35,35	0.71	0
5	ARR	A	902[A]	-	27,27,27	4.49	13 (48%)	26,35,35	0.70	0
4	H4B	B	1901	-	16,18,18	2.10	4 (25%)	11,26,26	4.13	7 (63%)
5	ARR	B	903[A]	-	27,27,27	4.49	13 (48%)	26,35,35	0.71	0
4	H4B	A	901	-	16,18,18	2.19	5 (31%)	11,26,26	4.08	7 (63%)
3	HEM	B	900	1	41,50,50	1.37	4 (9%)	45,82,82	1.42	7 (15%)
5	ARR	A	902[B]	-	27,27,27	4.49	13 (48%)	26,35,35	0.70	0

In the following table, the Chirals column lists the number of chiral outliers, the number of chiral centers analysed, the number of these observed in the model and the number defined in the Chemical Component Dictionary. Similar counts are reported in the Torsion and Rings columns. '-' means no outliers of that kind were identified.

Mol	Type	Chain	Res	Link	Chirals	Torsions	Rings
3	HEM	A	900	1	-	4/12/54/54	-
5	ARR	B	903[B]	-	-	2/11/15/15	0/3/3/3
5	ARR	A	902[A]	-	-	3/11/15/15	0/3/3/3
4	H4B	B	1901	-	-	0/8/17/17	0/2/2/2
5	ARR	B	903[A]	-	-	3/11/15/15	0/3/3/3
4	H4B	A	901	-	-	0/8/17/17	0/2/2/2
3	HEM	B	900	1	-	6/12/54/54	-
5	ARR	A	902[B]	-	-	2/11/15/15	0/3/3/3

All (69) bond length outliers are listed below:

Mol	Chain	Res	Type	Atoms	Z	Observed(Å)	Ideal(Å)
5	B	903[A]	ARR	C4-S	-20.50	1.47	1.72
5	B	903[B]	ARR	C4-S	-20.50	1.47	1.72
5	A	902[A]	ARR	C4-S	-20.45	1.47	1.72
5	A	902[B]	ARR	C4-S	-20.45	1.47	1.72
4	B	1901	H4B	C4-N3	5.47	1.42	1.33
4	A	901	H4B	C4-N3	5.19	1.42	1.33
5	A	902[A]	ARR	C1-S	-4.85	1.47	1.71
5	A	902[B]	ARR	C1-S	-4.85	1.47	1.71
5	B	903[A]	ARR	C1-S	-4.85	1.47	1.71
5	B	903[B]	ARR	C1-S	-4.85	1.47	1.71
5	A	902[A]	ARR	C4-C5	-4.82	1.39	1.45
5	A	902[B]	ARR	C4-C5	-4.82	1.39	1.45
5	B	903[A]	ARR	C4-C5	-4.81	1.39	1.45
5	B	903[B]	ARR	C4-C5	-4.81	1.39	1.45
4	A	901	H4B	C4A-N5	4.67	1.47	1.38
4	B	1901	H4B	C4A-N5	4.23	1.46	1.38
3	A	900	HEM	CAB-C3B	-3.87	1.36	1.47
3	B	900	HEM	CAB-C3B	-3.79	1.37	1.47
3	B	900	HEM	C3C-CAC	-3.78	1.40	1.47
5	A	902[A]	ARR	C10-C6	3.68	1.45	1.39
5	A	902[B]	ARR	C10-C6	3.68	1.45	1.39
5	B	903[A]	ARR	C10-C6	3.67	1.45	1.39
5	B	903[B]	ARR	C10-C6	3.67	1.45	1.39
4	A	901	H4B	C6-N5	3.60	1.53	1.45
4	B	1901	H4B	C6-N5	3.25	1.52	1.45
3	A	900	HEM	C3C-CAC	-3.19	1.41	1.47
5	A	902[B]	ARR	C20-C19	2.98	1.43	1.38
5	B	903[B]	ARR	C20-C19	2.96	1.43	1.38
5	A	902[A]	ARR	C20-C15	2.95	1.44	1.39
5	B	903[A]	ARR	C20-C19	2.93	1.43	1.38
5	A	902[A]	ARR	C20-C19	2.92	1.43	1.38
5	B	903[A]	ARR	C20-C15	2.91	1.44	1.39
5	B	903[B]	ARR	C20-C15	2.90	1.44	1.39
5	A	902[B]	ARR	C20-C15	2.90	1.44	1.39
3	A	900	HEM	C3C-C2C	-2.86	1.36	1.40
3	B	900	HEM	C3C-C2C	-2.81	1.36	1.40
5	A	902[B]	ARR	C18-C19	2.70	1.43	1.38
5	B	903[A]	ARR	C18-C19	2.69	1.43	1.38
5	A	902[A]	ARR	C18-C19	2.67	1.43	1.38
5	B	903[B]	ARR	C18-C19	2.66	1.43	1.38
3	A	900	HEM	CHA-C4D	2.46	1.41	1.35
5	B	903[A]	ARR	C7-C6	2.35	1.43	1.39

Continued on next page...

Continued from previous page...

Mol	Chain	Res	Type	Atoms	Z	Observed(Å)	Ideal(Å)
5	B	903[B]	ARR	C7-C6	2.35	1.43	1.39
4	A	901	H4B	C7-N8	2.31	1.48	1.44
5	A	902[A]	ARR	C7-C6	2.31	1.43	1.39
5	A	902[B]	ARR	C7-C6	2.31	1.43	1.39
5	B	903[A]	ARR	C16-C15	2.25	1.43	1.38
5	A	902[A]	ARR	C16-C15	2.25	1.43	1.38
5	B	903[B]	ARR	C16-C15	2.24	1.43	1.38
4	B	1901	H4B	C8A-N1	2.22	1.38	1.34
5	A	902[B]	ARR	C16-C15	2.21	1.43	1.38
5	B	903[A]	ARR	C2-C3	-2.20	1.32	1.39
5	B	903[B]	ARR	C2-C3	-2.20	1.32	1.39
5	A	902[A]	ARR	C2-C3	-2.18	1.33	1.39
5	A	902[B]	ARR	C2-C3	-2.18	1.33	1.39
4	A	901	H4B	C8A-N1	2.16	1.38	1.34
5	A	902[A]	ARR	C7-C8	2.11	1.42	1.38
5	A	902[B]	ARR	C7-C8	2.11	1.42	1.38
3	B	900	HEM	C2C-C1C	2.11	1.47	1.42
5	B	903[A]	ARR	C7-C8	2.08	1.42	1.38
5	B	903[B]	ARR	C7-C8	2.08	1.42	1.38
5	A	902[A]	ARR	C8-C9	2.05	1.43	1.38
5	A	902[B]	ARR	C8-C9	2.05	1.43	1.38
5	B	903[B]	ARR	C17-C18	2.02	1.43	1.38
5	A	902[B]	ARR	C17-C18	2.02	1.43	1.38
5	B	903[A]	ARR	C8-C9	2.02	1.43	1.38
5	B	903[B]	ARR	C8-C9	2.02	1.43	1.38
5	A	902[A]	ARR	C17-C18	2.02	1.43	1.38
5	B	903[A]	ARR	C17-C18	2.01	1.43	1.38

All (30) bond angle outliers are listed below:

Mol	Chain	Res	Type	Atoms	Z	Observed(°)	Ideal(°)
4	B	1901	H4B	C8A-C4A-C4	8.35	121.98	114.57
4	A	901	H4B	C8A-C4A-C4	8.32	121.96	114.57
4	B	1901	H4B	C2-N3-C4	6.12	125.66	115.93
4	A	901	H4B	C2-N3-C4	6.05	125.54	115.93
3	A	900	HEM	C2C-C3C-C4C	-5.27	103.22	106.90
4	B	1901	H4B	N1-C2-N3	-5.05	117.51	125.42
4	A	901	H4B	N1-C2-N3	-4.95	117.66	125.42
3	A	900	HEM	CBA-CAA-C2A	4.13	119.67	112.62
4	B	1901	H4B	C4A-C4-N3	-3.77	113.30	124.01
4	A	901	H4B	C4A-C4-N3	-3.67	113.58	124.01
3	A	900	HEM	C4B-CHC-C1C	3.57	127.27	122.56

Continued on next page...

Continued from previous page...

Mol	Chain	Res	Type	Atoms	Z	Observed(°)	Ideal(°)
4	B	1901	H4B	C2-N1-C8A	3.53	122.45	114.54
3	B	900	HEM	C2C-C3C-C4C	-3.52	104.44	106.90
4	A	901	H4B	C2-N1-C8A	3.50	122.39	114.54
4	B	1901	H4B	C4A-N5-C6	-3.40	111.92	121.16
4	A	901	H4B	N2-C2-N1	3.34	122.45	117.25
3	A	900	HEM	CMD-C2D-C1D	3.28	130.03	125.04
4	B	1901	H4B	N2-C2-N1	3.23	122.27	117.25
4	A	901	H4B	C4A-N5-C6	-3.21	112.41	121.16
3	B	900	HEM	CBA-CAA-C2A	3.14	117.98	112.62
3	B	900	HEM	CAD-C3D-C4D	2.99	129.89	124.66
3	B	900	HEM	C4B-CHC-C1C	2.91	126.40	122.56
3	B	900	HEM	CAD-C3D-C2D	-2.47	123.27	127.88
3	A	900	HEM	CHD-C1D-ND	-2.44	121.78	124.43
3	A	900	HEM	CAD-C3D-C2D	-2.41	123.39	127.88
3	B	900	HEM	CMD-C2D-C1D	2.33	128.59	125.04
3	A	900	HEM	C2D-C1D-ND	2.23	112.56	109.88
3	A	900	HEM	C1D-C2D-C3D	-2.07	104.78	106.96
3	B	900	HEM	C4C-CHD-C1D	2.02	125.22	122.56
3	A	900	HEM	CAD-C3D-C4D	2.01	128.17	124.66

There are no chirality outliers.

All (20) torsion outliers are listed below:

Mol	Chain	Res	Type	Atoms
3	A	900	HEM	C1A-C2A-CAA-CBA
3	A	900	HEM	C3A-C2A-CAA-CBA
3	B	900	HEM	C2B-C3B-CAB-CBB
5	B	903[A]	ARR	C12-C13-N2-C14
5	A	902[A]	ARR	C12-C13-N2-C14
3	B	900	HEM	C4B-C3B-CAB-CBB
5	A	902[B]	ARR	C9-C12-C13-N2
5	B	903[A]	ARR	C9-C12-C13-N2
5	B	903[B]	ARR	C9-C12-C13-N2
5	A	902[B]	ARR	C15-C14-N2-C13
5	B	903[B]	ARR	C15-C14-N2-C13
5	A	902[A]	ARR	C9-C12-C13-N2
3	B	900	HEM	C1A-C2A-CAA-CBA
5	A	902[A]	ARR	C15-C14-N2-C13
5	B	903[A]	ARR	C15-C14-N2-C13
3	B	900	HEM	CAD-CBD-CGD-O2D
3	A	900	HEM	CAD-CBD-CGD-O2D
3	B	900	HEM	CAD-CBD-CGD-O1D

Continued on next page...

Continued from previous page...

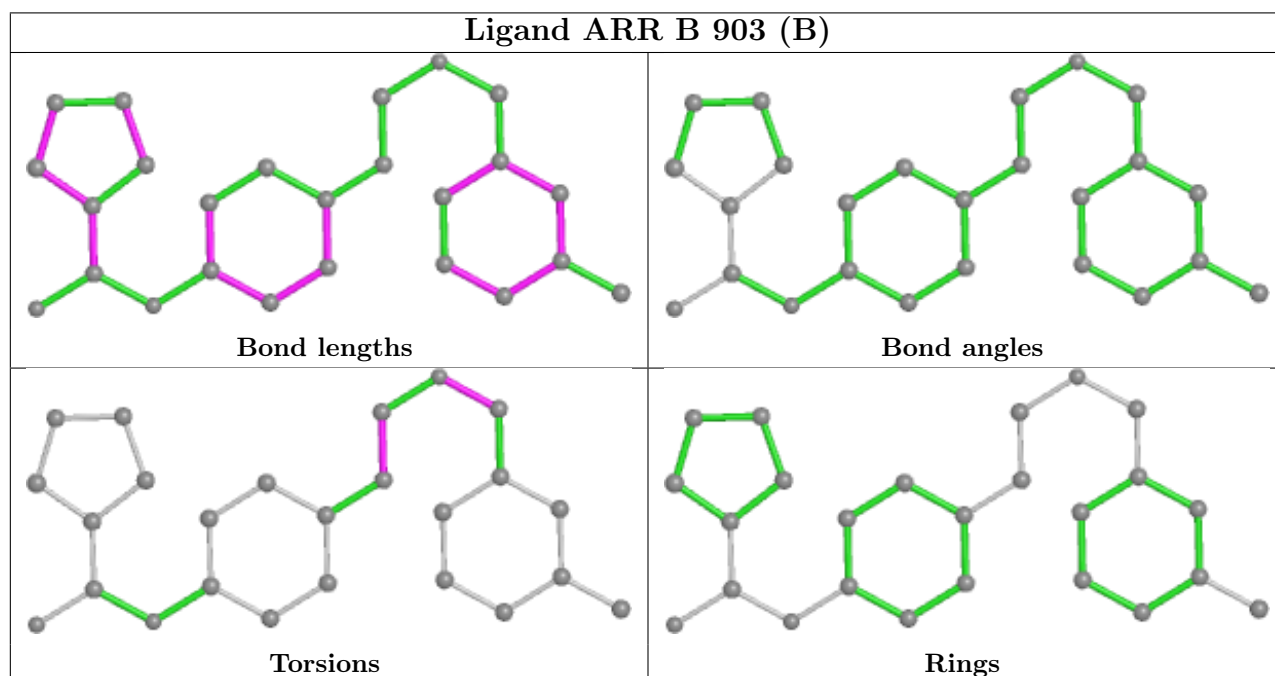
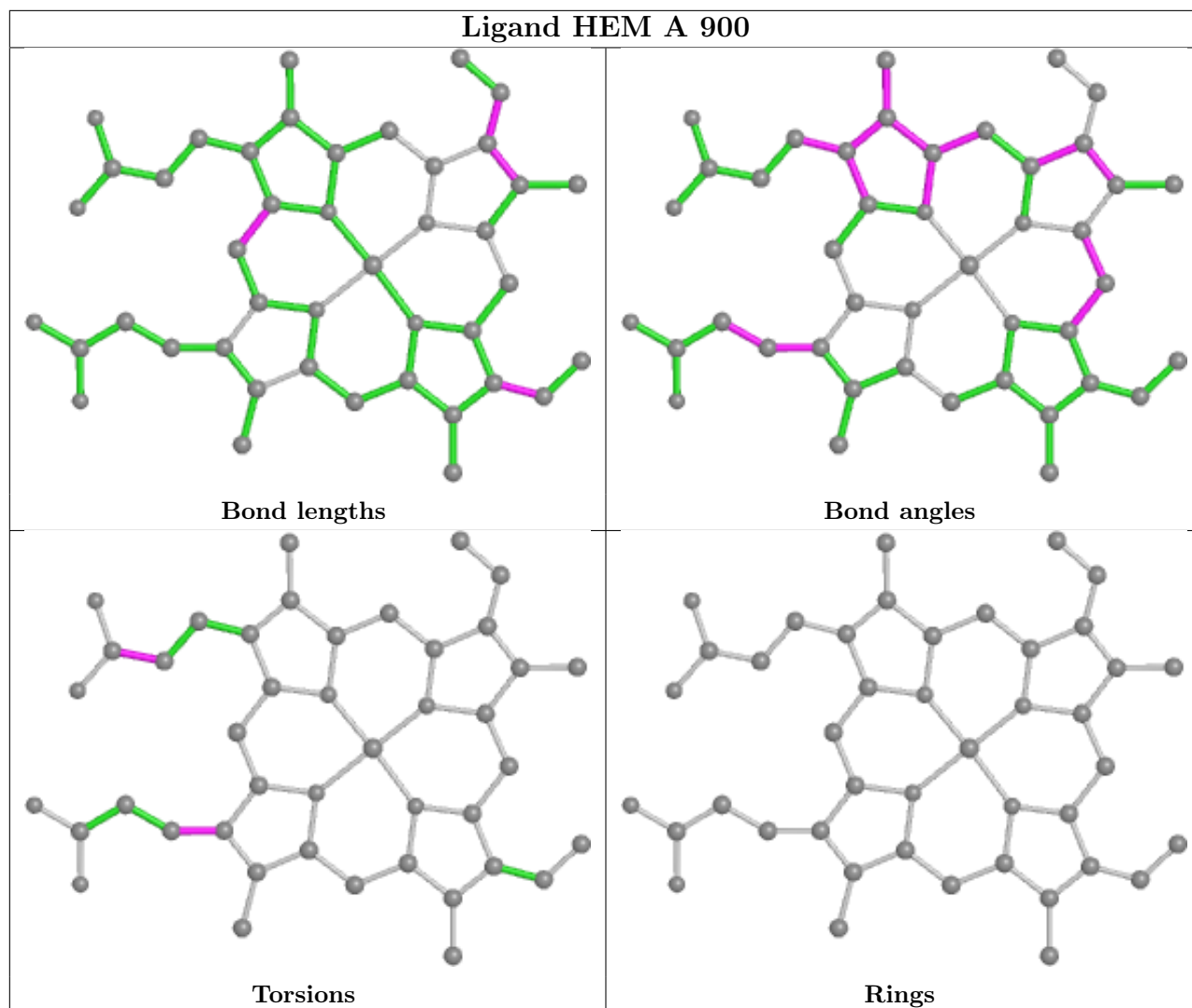
Mol	Chain	Res	Type	Atoms
3	A	900	HEM	CAD-CBD-CGD-O1D
3	B	900	HEM	CAA-CBA-CGA-O2A

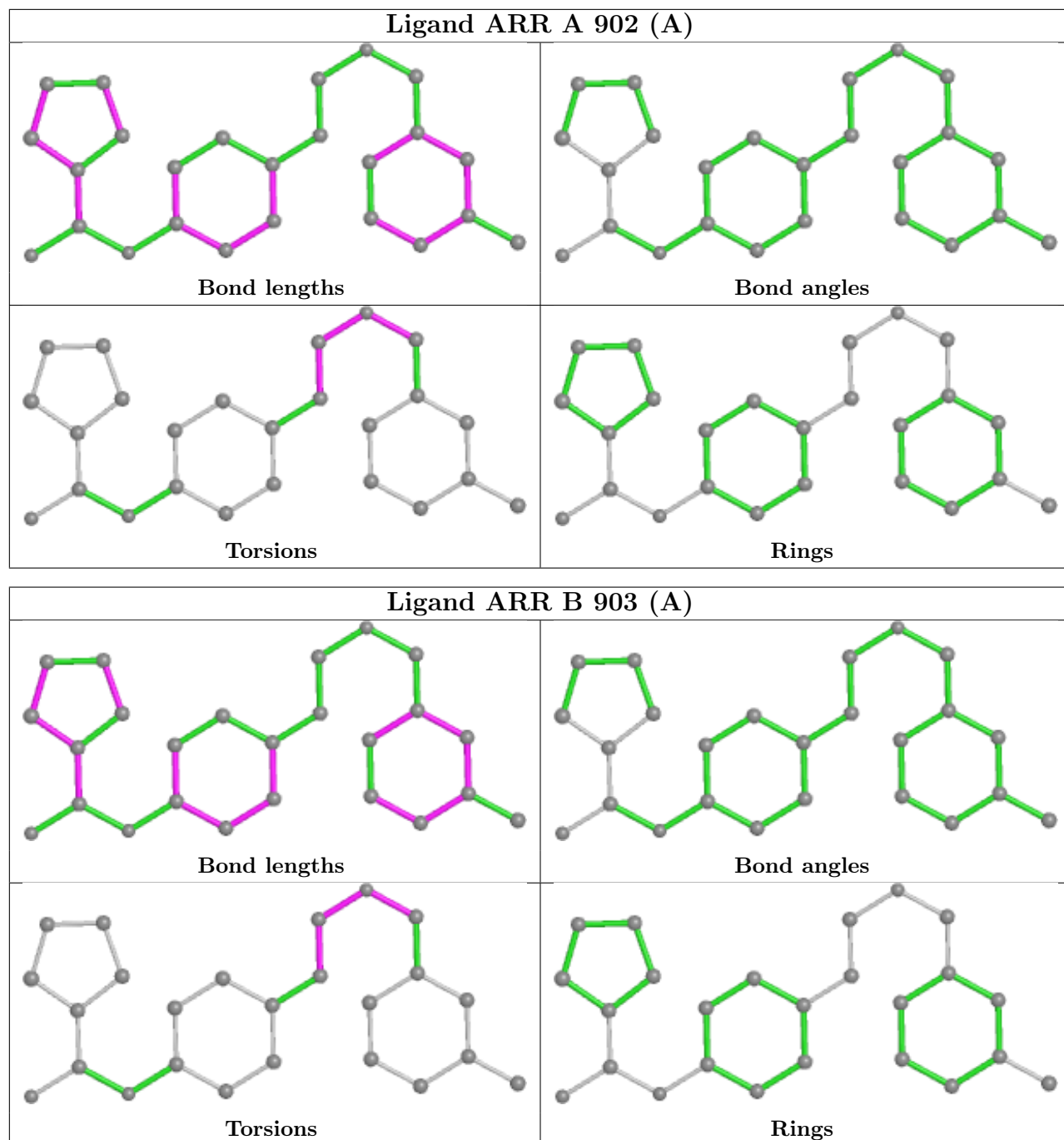
There are no ring outliers.

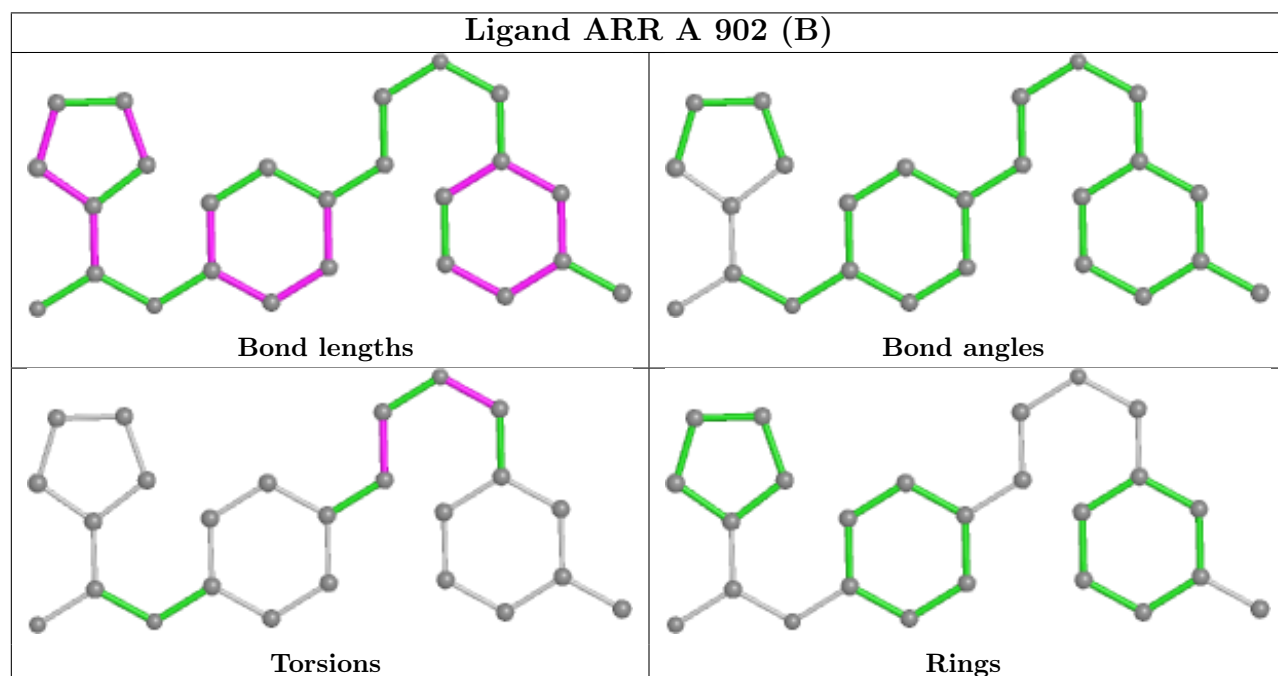
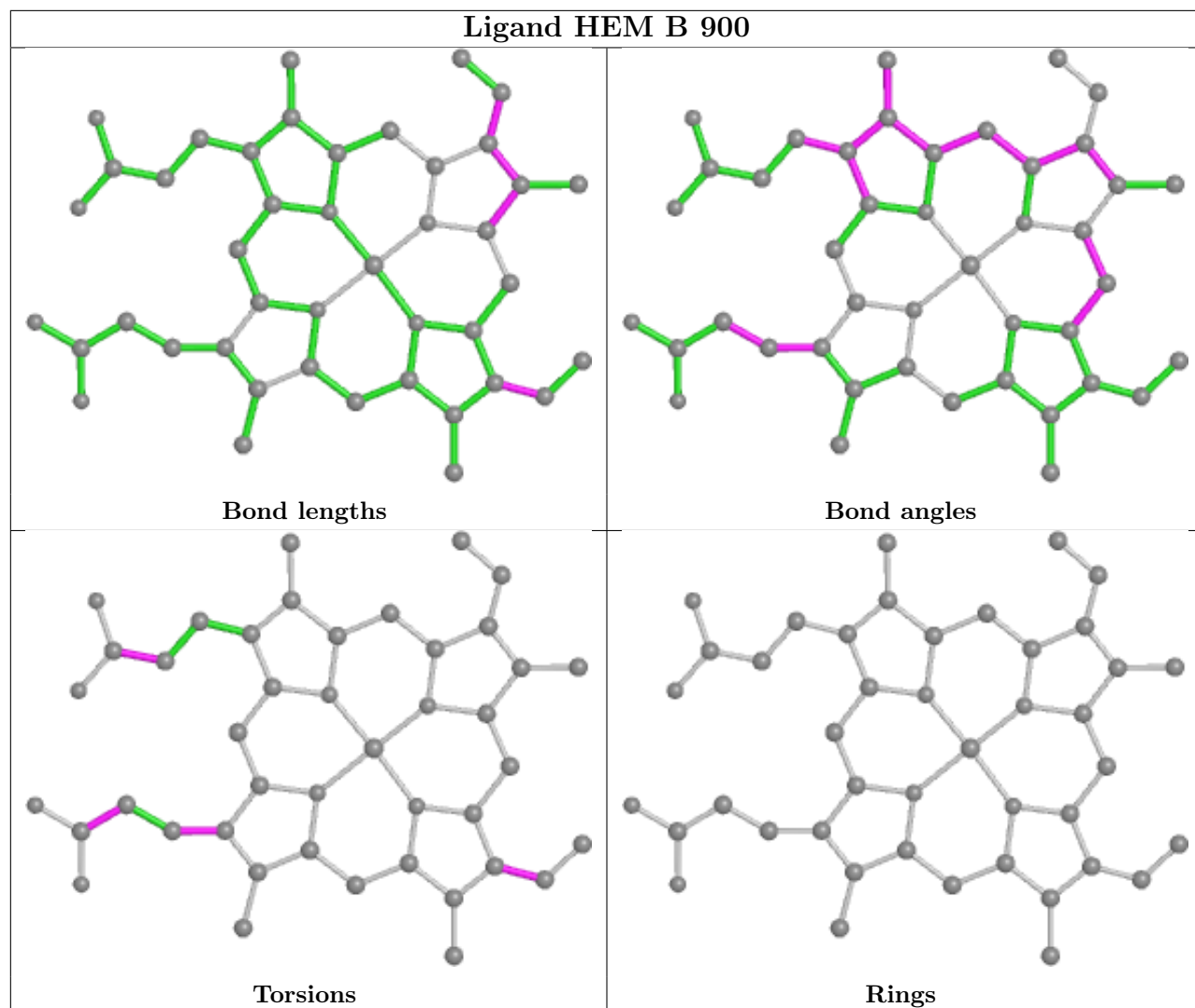
5 monomers are involved in 37 short contacts:

Mol	Chain	Res	Type	Clashes	Symm-Clashes
5	B	903[B]	ARR	14	0
5	A	902[A]	ARR	5	0
5	B	903[A]	ARR	6	0
3	B	900	HEM	1	0
5	A	902[B]	ARR	8	3

The following is a two-dimensional graphical depiction of Mogul quality analysis of bond lengths, bond angles, torsion angles, and ring geometry for all instances of the Ligand of Interest. In addition, ligands with molecular weight > 250 and outliers as shown on the validation Tables will also be included. For torsion angles, if less than 5% of the Mogul distribution of torsion angles is within 10 degrees of the torsion angle in question, then that torsion angle is considered an outlier. Any bond that is central to one or more torsion angles identified as an outlier by Mogul will be highlighted in the graph. For rings, the root-mean-square deviation (RMSD) between the ring in question and similar rings identified by Mogul is calculated over all ring torsion angles. If the average RMSD is greater than 60 degrees and the minimal RMSD between the ring in question and any Mogul-identified rings is also greater than 60 degrees, then that ring is considered an outlier. The outliers are highlighted in purple. The color gray indicates Mogul did not find sufficient equivalents in the CSD to analyse the geometry.







5.7 Other polymers [i](#)

There are no such residues in this entry.

5.8 Polymer linkage issues [i](#)

There are no chain breaks in this entry.

6 Fit of model and data [i](#)

6.1 Protein, DNA and RNA chains [i](#)

In the following table, the column labelled ‘#RSRZ > 2’ contains the number (and percentage) of RSRZ outliers, followed by percent RSRZ outliers for the chain as percentile scores relative to all X-ray entries and entries of similar resolution. The OWAB column contains the minimum, median, 95th percentile and maximum values of the occupancy-weighted average B-factor per residue. The column labelled ‘Q < 0.9’ lists the number of (and percentage) of residues with an average occupancy less than 0.9.

Mol	Chain	Analysed	<RSRZ>	#RSRZ>2	OWAB(Å ²)	Q<0.9
1	A	419/419 (100%)	-0.30	5 (1%) 79 79	42, 59, 78, 93	0
1	B	419/419 (100%)	-0.26	9 (2%) 63 61	48, 62, 82, 95	0
All	All	838/838 (100%)	-0.28	14 (1%) 70 69	42, 60, 80, 95	0

All (14) RSRZ outliers are listed below:

Mol	Chain	Res	Type	RSRZ
1	B	106	SER	6.9
1	B	101	ASP	4.7
1	A	106	SER	4.1
1	A	150	GLU	3.5
1	A	231	ASN	3.0
1	B	149	LYS	2.9
1	A	149	LYS	2.7
1	B	154	GLU	2.3
1	B	446	ARG	2.2
1	B	150	GLU	2.2
1	B	447	ALA	2.1
1	A	107	LYS	2.1
1	B	102	PHE	2.0
1	B	495	TRP	2.0

6.2 Non-standard residues in protein, DNA, RNA chains [i](#)

There are no non-standard protein/DNA/RNA residues in this entry.

6.3 Carbohydrates [i](#)

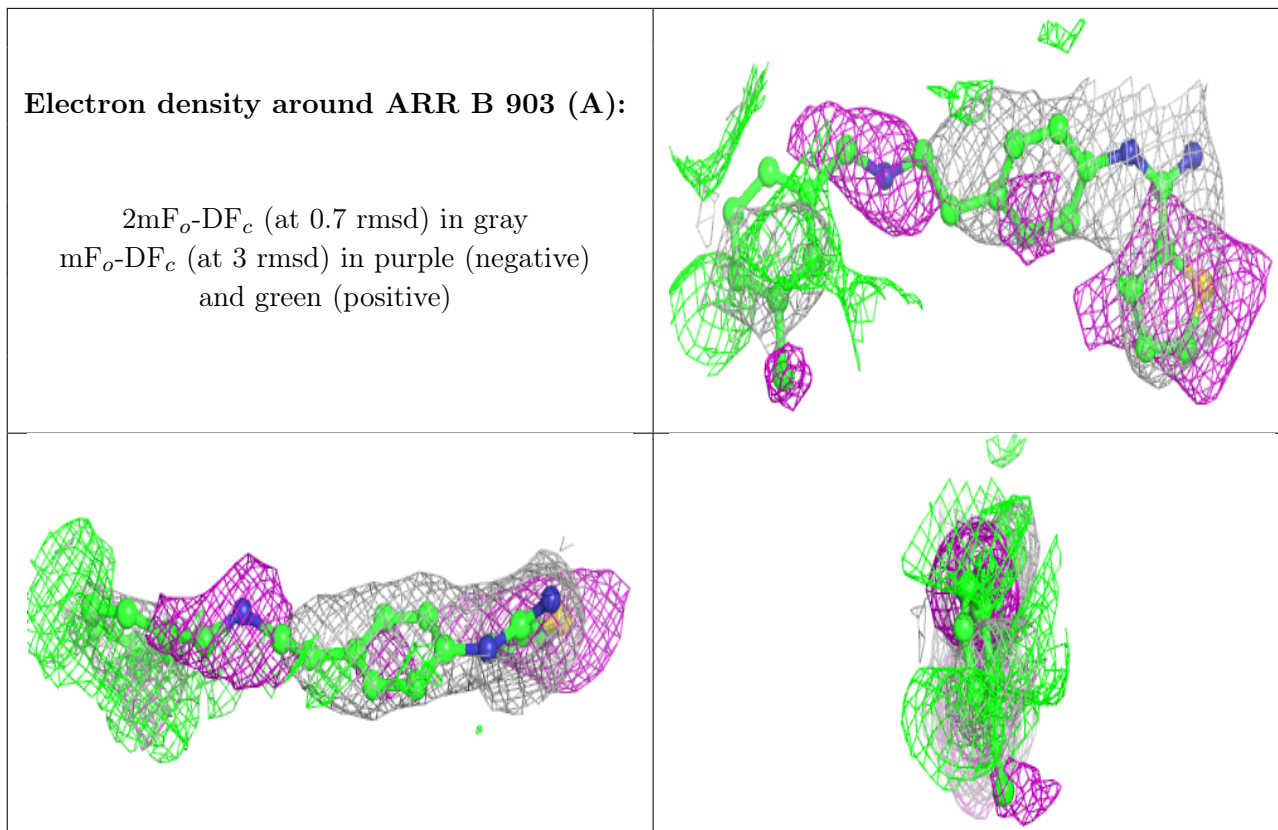
There are no monosaccharides in this entry.

6.4 Ligands [i](#)

In the following table, the Atoms column lists the number of modelled atoms in the group and the number defined in the chemical component dictionary. The B-factors column lists the minimum, median, 95th percentile and maximum values of B factors of atoms in the group. The column labelled 'Q< 0.9' lists the number of atoms with occupancy less than 0.9.

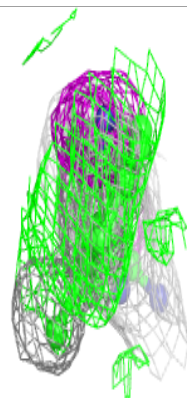
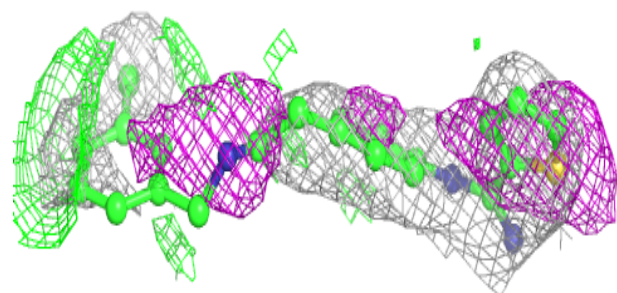
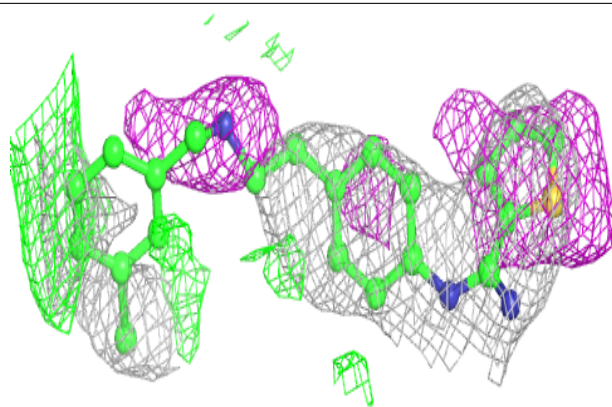
Mol	Type	Chain	Res	Atoms	RSCC	RSR	B-factors(Å ²)	Q<0.9
5	ARR	B	903[A]	25/25	0.75	0.40	41,56,59,59	25
5	ARR	B	903[B]	25/25	0.75	0.40	40,55,58,59	25
5	ARR	A	902[A]	25/25	0.82	0.40	40,48,58,59	25
5	ARR	A	902[B]	25/25	0.82	0.40	40,48,57,59	25
2	ZN	B	950	1/1	0.93	0.06	53,53,53,53	1
4	H4B	A	901	17/17	0.96	0.12	48,49,51,54	0
3	HEM	B	900	43/43	0.97	0.15	48,51,52,53	0
4	H4B	B	1901	17/17	0.98	0.12	51,52,55,57	0
3	HEM	A	900	43/43	0.99	0.12	42,45,48,50	0
2	ZN	A	950	1/1	0.99	0.05	55,55,55,55	1

The following is a graphical depiction of the model fit to experimental electron density of all instances of the Ligand of Interest. In addition, ligands with molecular weight > 250 and outliers as shown on the geometry validation Tables will also be included. Each fit is shown from different orientation to approximate a three-dimensional view.

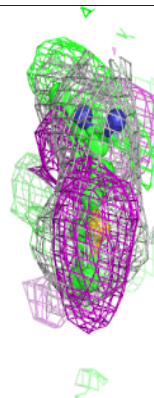
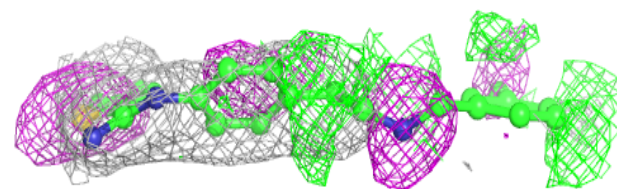
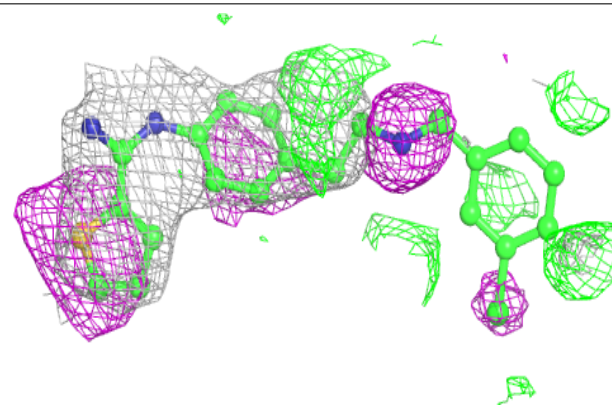


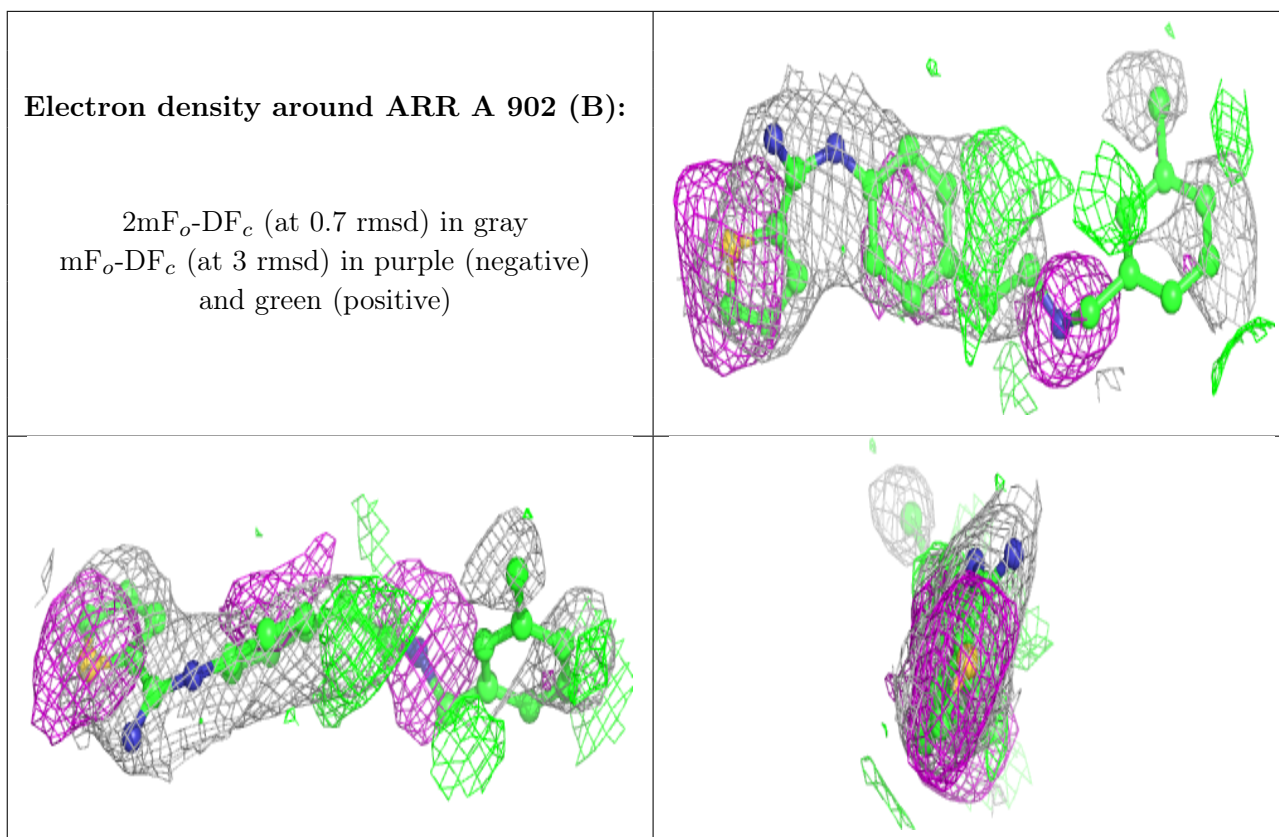
Electron density around ARR B 903 (B):

$2mF_o-DF_c$ (at 0.7 rmsd) in gray
 mF_o-DF_c (at 3 rmsd) in purple (negative)
and green (positive)

**Electron density around ARR A 902 (A):**

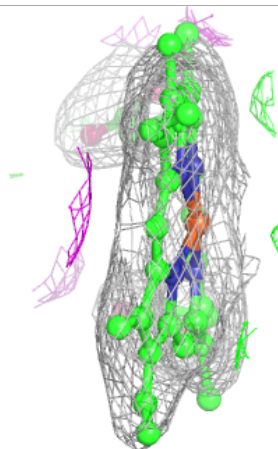
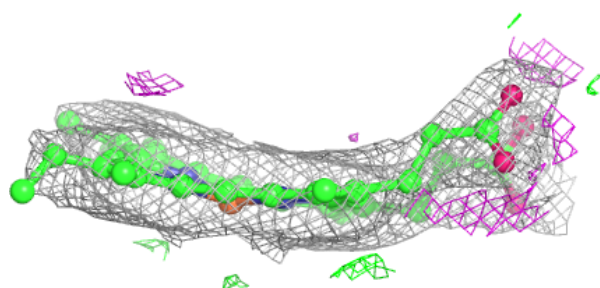
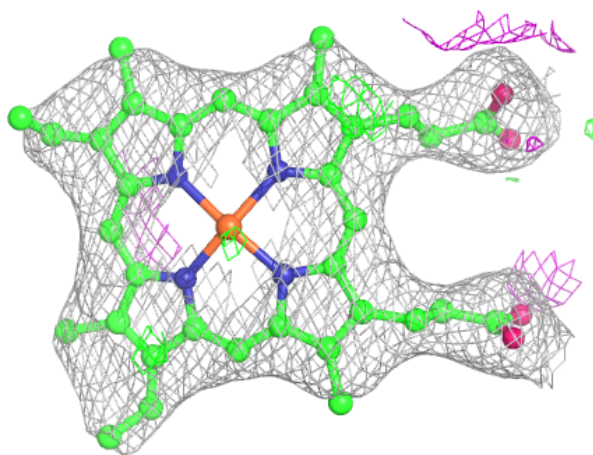
$2mF_o-DF_c$ (at 0.7 rmsd) in gray
 mF_o-DF_c (at 3 rmsd) in purple (negative)
and green (positive)

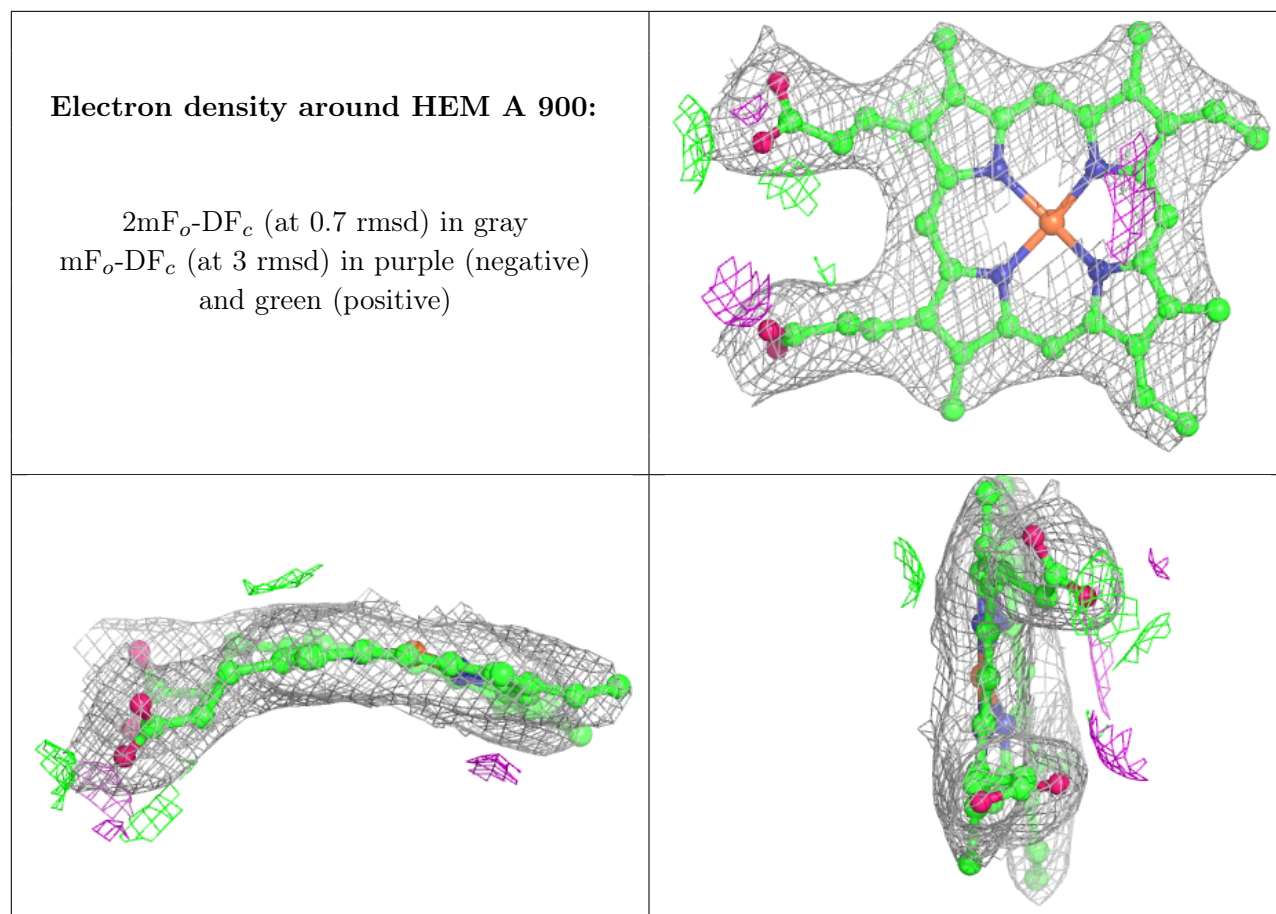




Electron density around HEM B 900:

$2mF_o-DF_c$ (at 0.7 rmsd) in gray
 mF_o-DF_c (at 3 rmsd) in purple (negative)
and green (positive)





6.5 Other polymers [i](#)

There are no such residues in this entry.