



Full wwPDB X-ray Structure Validation Report ⓘ

Aug 10, 2020 – 04:43 AM BST

PDB ID : 1TG8
Title : The structure of Dengue virus E glycoprotein
Authors : Zhang, Y.; Zhang, W.; Ogata, S.; Clements, D.; Strauss, J.H.; Baker, T.S.;
Rossmann, M.G.
Deposited on : 2004-05-28
Resolution : 2.61 Å(reported)

This is a Full wwPDB X-ray Structure Validation Report for a publicly released PDB entry.

We welcome your comments at validation@mail.wwpdb.org

A user guide is available at

<https://www.wwpdb.org/validation/2017/XrayValidationReportHelp>

with specific help available everywhere you see the ⓘ symbol.

The following versions of software and data (see [references ⓘ](#)) were used in the production of this report:

MolProbity : 4.02b-467
Mogul : 1.8.5 (274361), CSD as541be (2020)
Xtriage (Phenix) : 1.13
EDS : 2.13.1
Percentile statistics : 20191225.v01 (using entries in the PDB archive December 25th 2019)
Refmac : 5.8.0158
CCP4 : 7.0.044 (Gargrove)
Ideal geometry (proteins) : Engh & Huber (2001)
Ideal geometry (DNA, RNA) : Parkinson et al. (1996)
Validation Pipeline (wwPDB-VP) : 2.13.1

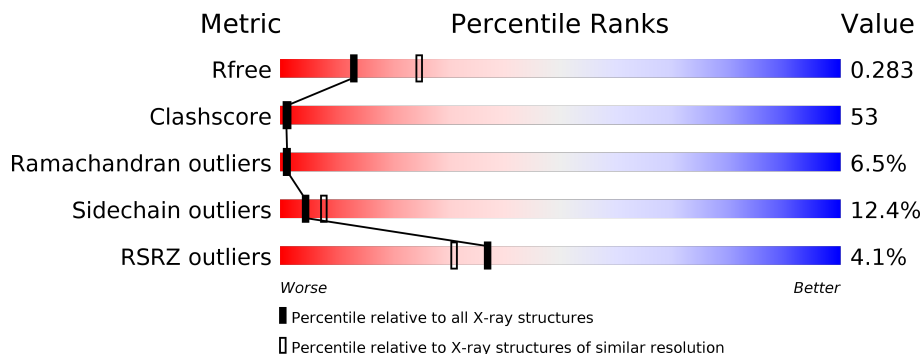
1 Overall quality at a glance

The following experimental techniques were used to determine the structure:

X-RAY DIFFRACTION

The reported resolution of this entry is 2.61 Å.

Percentile scores (ranging between 0-100) for global validation metrics of the entry are shown in the following graphic. The table shows the number of entries on which the scores are based.



Metric	Whole archive (#Entries)	Similar resolution (#Entries, resolution range(Å))
R_{free}	130704	3797 (2.64-2.60)
Clashscore	141614	4168 (2.64-2.60)
Ramachandran outliers	138981	4093 (2.64-2.60)
Sidechain outliers	138945	4093 (2.64-2.60)
RSRZ outliers	127900	3731 (2.64-2.60)

The table below summarises the geometric issues observed across the polymeric chains and their fit to the electron density. The red, orange, yellow and green segments on the lower bar indicate the fraction of residues that contain outliers for ≥ 3 , 2, 1 and 0 types of geometric quality criteria respectively. A grey segment represents the fraction of residues that are not modelled. The numeric value for each fraction is indicated below the corresponding segment, with a dot representing fractions $\leq 5\%$. The upper red bar (where present) indicates the fraction of residues that have poor fit to the electron density. The numeric value is given above the bar.

Mol	Chain	Length	Quality of chain
1	A	395	 4% 39% 46% 10%

2 Entry composition [i](#)

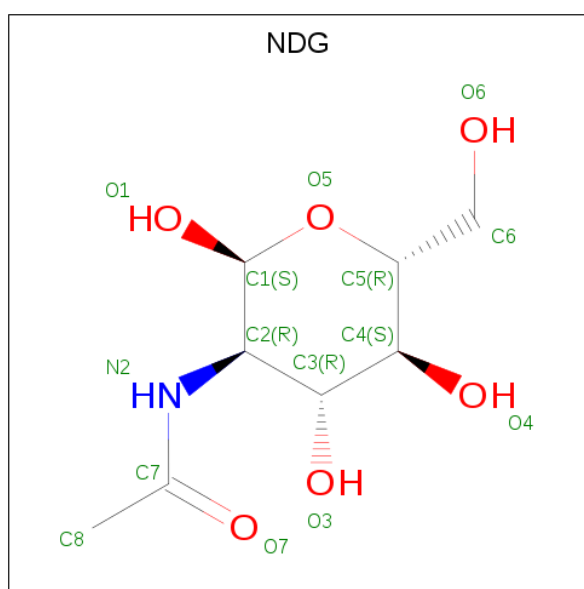
There are 3 unique types of molecules in this entry. The entry contains 3276 atoms, of which 0 are hydrogens and 0 are deuteriums.

In the tables below, the ZeroOcc column contains the number of atoms modelled with zero occupancy, the AltConf column contains the number of residues with at least one atom in alternate conformation and the Trace column contains the number of residues modelled with at most 2 atoms.

- Molecule 1 is a protein called envelope glycoprotein.

Mol	Chain	Residues	Atoms					ZeroOcc	AltConf	Trace
			Total	C	N	O	S			
1	A	390	3033	1915	520	572	26	0	0	0

- Molecule 2 is 2-acetamido-2-deoxy-alpha-D-glucopyranose (three-letter code: NDG) (formula: C₈H₁₅NO₆).



Mol	Chain	Residues	Atoms				ZeroOcc	AltConf
			Total	C	N	O		
2	A	1	15	8	1	6	0	0
2	A	1	15	8	1	6	0	0

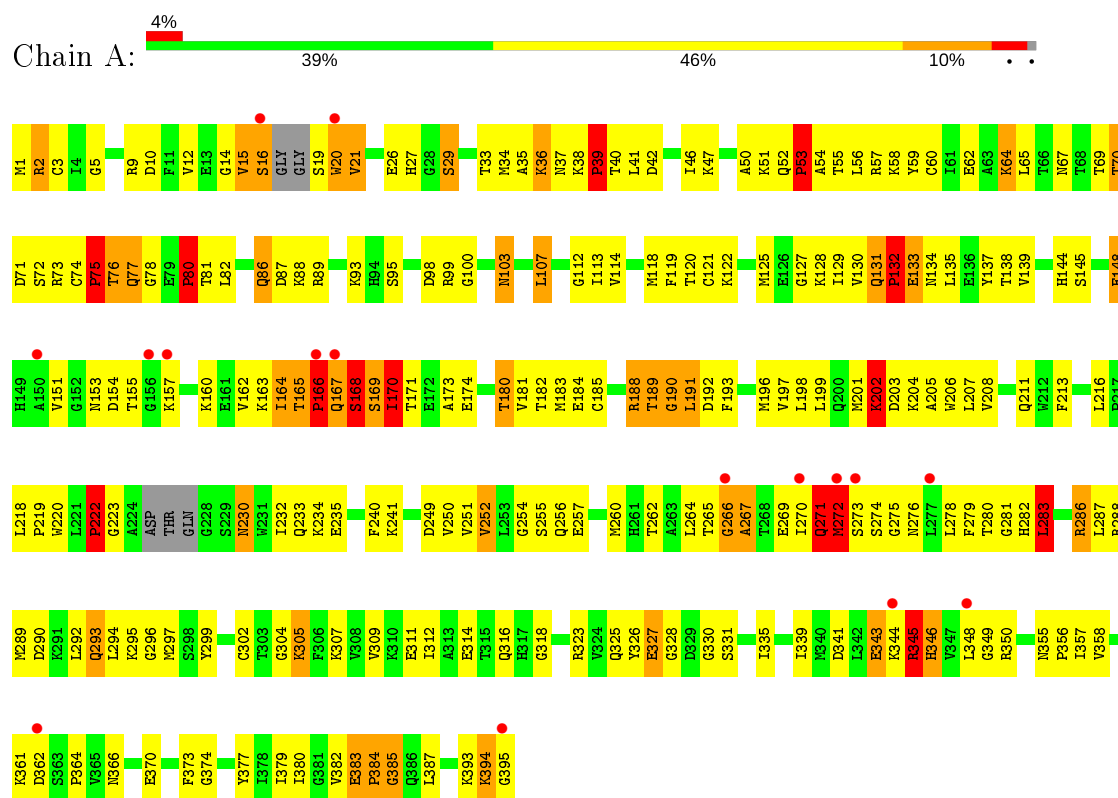
- Molecule 3 is water.

Mol	Chain	Residues	Atoms		ZeroOcc	AltConf
3	A	213	Total	O	0	0
			213	213		

3 Residue-property plots

These plots are drawn for all protein, RNA, DNA and oligosaccharide chains in the entry. The first graphic for a chain summarises the proportions of the various outlier classes displayed in the second graphic. The second graphic shows the sequence view annotated by issues in geometry and electron density. Residues are color-coded according to the number of geometric quality criteria for which they contain at least one outlier: green = 0, yellow = 1, orange = 2 and red = 3 or more. A red dot above a residue indicates a poor fit to the electron density ($RSRZ > 2$). Stretches of 2 or more consecutive residues without any outlier are shown as a green connector. Residues present in the sample, but not in the model, are shown in grey.

- Molecule 1: envelope glycoprotein



4 Data and refinement statistics

Property	Value	Source
Space group	P 32 2 1	Depositor
Cell constants a, b, c, α , β , γ	71.92Å 71.92Å 140.86Å 90.00° 90.00° 120.00°	Depositor
Resolution (Å)	50.00 – 2.61 46.95 – 2.61	Depositor EDS
% Data completeness (in resolution range)	(Not available) (50.00-2.61) 97.4 (46.95-2.61)	Depositor EDS
R_{merge}	(Not available)	Depositor
R_{sym}	(Not available)	Depositor
$\langle I/\sigma(I) \rangle$ ¹	3.05 (at 2.61Å)	Xtrriage
Refinement program	CNS	Depositor
R, R_{free}	0.264 , 0.294 0.260 , 0.283	Depositor DCC
R_{free} test set	1338 reflections (10.30%)	wwPDB-VP
Wilson B-factor (Å ²)	49.2	Xtrriage
Anisotropy	0.681	Xtrriage
Bulk solvent k_{sol} (e/Å ³), B_{sol} (Å ²)	0.36 , 60.5	EDS
L-test for twinning ²	$\langle L \rangle = 0.50$, $\langle L^2 \rangle = 0.34$	Xtrriage
Estimated twinning fraction	0.032 for -h,-k,l	Xtrriage
F_o, F_c correlation	0.91	EDS
Total number of atoms	3276	wwPDB-VP
Average B, all atoms (Å ²)	57.0	wwPDB-VP

Xtrriage's analysis on translational NCS is as follows: *The largest off-origin peak in the Patterson function is 4.82% of the height of the origin peak. No significant pseudotranslation is detected.*

¹ Intensities estimated from amplitudes.

² Theoretical values of $\langle |L| \rangle$, $\langle L^2 \rangle$ for acentric reflections are 0.5, 0.333 respectively for untwinned datasets, and 0.375, 0.2 for perfectly twinned datasets.

5 Model quality [i](#)

5.1 Standard geometry [i](#)

Bond lengths and bond angles in the following residue types are not validated in this section: NDG

The Z score for a bond length (or angle) is the number of standard deviations the observed value is removed from the expected value. A bond length (or angle) with $|Z| > 5$ is considered an outlier worth inspection. RMSZ is the root-mean-square of all Z scores of the bond lengths (or angles).

Mol	Chain	Bond lengths		Bond angles	
		RMSZ	# Z >5	RMSZ	# Z >5
1	A	0.56	0/3093	1.07	16/4174 (0.4%)

There are no bond length outliers.

All (16) bond angle outliers are listed below:

Mol	Chain	Res	Type	Atoms	Z	Observed(°)	Ideal(°)
1	A	166	PRO	CA-N-CD	-15.34	90.02	111.50
1	A	167	GLN	C-N-CA	11.83	151.27	121.70
1	A	167	GLN	CA-C-N	-11.18	92.61	117.20
1	A	80	PRO	CA-N-CD	-10.71	96.51	111.50
1	A	222	PRO	CA-N-CD	-10.19	97.23	111.50
1	A	39	PRO	CA-N-CD	-9.66	97.98	111.50
1	A	53	PRO	CA-N-CD	-8.98	98.93	111.50
1	A	168	SER	N-CA-C	-7.88	89.71	111.00
1	A	167	GLN	O-C-N	6.97	133.85	122.70
1	A	190	GLY	N-CA-C	-6.68	96.39	113.10
1	A	5	GLY	O-C-N	6.47	133.05	122.70
1	A	167	GLN	CA-C-O	6.40	133.53	120.10
1	A	5	GLY	C-N-CA	6.18	137.14	121.70
1	A	271	GLN	C-N-CA	-6.17	106.27	121.70
1	A	166	PRO	C-N-CA	-6.13	106.38	121.70
1	A	271	GLN	CB-CA-C	-5.17	100.06	110.40

There are no chirality outliers.

There are no planarity outliers.

5.2 Too-close contacts

In the following table, the Non-H and H(model) columns list the number of non-hydrogen atoms and hydrogen atoms in the chain respectively. The H(added) column lists the number of hydrogen atoms added and optimized by MolProbity. The Clashes column lists the number of clashes within the asymmetric unit, whereas Symm-Clashes lists symmetry related clashes.

Mol	Chain	Non-H	H(model)	H(added)	Clashes	Symm-Clashes
1	A	3033	0	3040	321	1
2	A	30	0	24	7	0
3	A	213	0	0	76	0
All	All	3276	0	3064	324	1

The all-atom clashscore is defined as the number of clashes found per 1000 atoms (including hydrogen atoms). The all-atom clashscore for this structure is 53.

All (324) close contacts within the same asymmetric unit are listed below, sorted by their clash magnitude.

Atom-1	Atom-2	Interatomic distance (Å)	Clash overlap (Å)
1:A:133:GLU:O	1:A:166:PRO:CB	1.81	1.28
1:A:265:THR:HA	3:A:548:HOH:O	1.19	1.28
1:A:166:PRO:O	1:A:167:GLN:HG2	1.21	1.27
1:A:153:ASN:HD21	2:A:402:NDG:C1	1.46	1.26
1:A:133:GLU:O	1:A:166:PRO:HB2	0.99	1.17
1:A:165:THR:HG21	1:A:168:SER:CB	1.77	1.14
1:A:153:ASN:ND2	2:A:402:NDG:C1	2.09	1.13
1:A:166:PRO:O	1:A:167:GLN:CG	1.98	1.10
1:A:202:LYS:HA	1:A:202:LYS:HE2	1.28	1.10
1:A:165:THR:HG21	1:A:168:SER:HB3	1.23	1.10
1:A:67:ASN:HD21	2:A:401:NDG:C1	1.65	1.09
1:A:274:SER:HB3	3:A:583:HOH:O	1.54	1.05
1:A:36:LYS:HB3	3:A:441:HOH:O	1.56	1.02
1:A:20:TRP:NE1	3:A:416:HOH:O	1.91	1.02
1:A:230:ASN:HA	3:A:408:HOH:O	1.60	1.00
1:A:323:ARG:HE	1:A:366:ASN:HD21	1.10	0.99
1:A:286:ARG:NH2	3:A:506:HOH:O	1.67	0.98
1:A:384:PRO:HB2	3:A:426:HOH:O	1.63	0.98
1:A:67:ASN:ND2	2:A:401:NDG:C1	2.28	0.97
1:A:280:THR:CG2	3:A:404:HOH:O	2.11	0.96
1:A:364:PRO:O	3:A:467:HOH:O	1.83	0.96
1:A:356:PRO:HA	3:A:601:HOH:O	1.67	0.94
1:A:72:SER:HB3	1:A:113:ILE:HG22	1.48	0.94
1:A:202:LYS:HA	1:A:202:LYS:CE	1.99	0.91

Continued on next page...

Continued from previous page...

Atom-1	Atom-2	Interatomic distance (Å)	Clash overlap (Å)
1:A:167:GLN:HA	1:A:168:SER:O	1.71	0.91
1:A:3:CYS:HB2	1:A:42:ASP:OD2	1.70	0.90
1:A:73:ARG:CG	1:A:80:PRO:HD3	2.01	0.90
1:A:280:THR:HG21	3:A:404:HOH:O	1.68	0.88
1:A:73:ARG:HG2	1:A:80:PRO:HD3	1.53	0.88
1:A:165:THR:CG2	1:A:168:SER:N	2.38	0.88
1:A:88:LYS:NZ	3:A:508:HOH:O	2.08	0.87
2:A:402:NDG:O4	3:A:478:HOH:O	1.94	0.86
1:A:395:GLY:CA	3:A:544:HOH:O	2.21	0.85
1:A:14:GLY:N	1:A:34:MET:O	2.09	0.84
1:A:137:TYR:HB2	1:A:164:ILE:HG23	1.60	0.83
1:A:273:SER:OG	3:A:554:HOH:O	1.97	0.83
1:A:165:THR:CG2	1:A:168:SER:CB	2.57	0.82
1:A:201:MET:O	1:A:202:LYS:HB2	1.78	0.81
1:A:164:ILE:CD1	1:A:185:CYS:HB2	2.10	0.81
1:A:38:LYS:HZ3	1:A:289:MET:C	1.85	0.80
1:A:345:ARG:NH2	3:A:584:HOH:O	1.67	0.80
1:A:65:LEU:HG	1:A:252:VAL:HG22	1.65	0.79
1:A:64:LYS:NZ	3:A:405:HOH:O	2.17	0.78
1:A:341:ASP:HB3	1:A:348:LEU:HD11	1.65	0.77
1:A:385:GLY:O	3:A:474:HOH:O	2.00	0.77
1:A:220:TRP:CZ3	1:A:222:PRO:HD3	2.19	0.77
1:A:80:PRO:HB3	1:A:114:VAL:HG12	1.67	0.77
1:A:383:GLU:HA	1:A:384:PRO:O	1.86	0.76
1:A:395:GLY:HA2	3:A:544:HOH:O	1.84	0.76
1:A:128:LYS:NZ	3:A:543:HOH:O	2.18	0.76
1:A:395:GLY:HA3	3:A:544:HOH:O	1.80	0.76
1:A:314:GLU:OE1	3:A:538:HOH:O	2.04	0.75
1:A:3:CYS:CB	1:A:42:ASP:OD2	2.34	0.74
1:A:349:GLY:O	3:A:403:HOH:O	2.04	0.74
1:A:394:LYS:HB3	3:A:509:HOH:O	1.86	0.74
1:A:165:THR:HG22	1:A:168:SER:O	1.88	0.74
1:A:274:SER:CB	3:A:583:HOH:O	2.20	0.74
1:A:74:CYS:HB2	1:A:77:GLN:HG3	1.68	0.73
1:A:14:GLY:HA2	1:A:21:VAL:HG23	1.69	0.73
1:A:72:SER:O	3:A:430:HOH:O	2.06	0.73
1:A:72:SER:HB3	1:A:113:ILE:CG2	2.19	0.73
1:A:118:MET:HE3	3:A:564:HOH:O	1.89	0.73
1:A:383:GLU:HG3	1:A:384:PRO:O	1.90	0.72
1:A:55:THR:O	1:A:223:GLY:HA3	1.89	0.71
1:A:345:ARG:O	1:A:346:HIS:HB2	1.91	0.71

Continued on next page...

Continued from previous page...

Atom-1	Atom-2	Interatomic distance (Å)	Clash overlap (Å)
1:A:311:GLU:HB3	3:A:447:HOH:O	1.91	0.70
1:A:379:ILE:HG22	3:A:415:HOH:O	1.91	0.69
1:A:311:GLU:O	3:A:447:HOH:O	2.11	0.69
1:A:233:GLN:HA	1:A:235:GLU:OE2	1.92	0.69
1:A:165:THR:HG22	1:A:165:THR:O	1.93	0.69
1:A:266:GLY:N	3:A:548:HOH:O	2.13	0.69
1:A:203:ASP:HB2	3:A:406:HOH:O	1.93	0.69
1:A:38:LYS:HE2	1:A:292:LEU:O	1.93	0.67
1:A:188:ARG:HB3	1:A:282:HIS:CB	2.24	0.67
1:A:271:GLN:O	1:A:272:MET:CG	2.43	0.67
1:A:166:PRO:C	1:A:167:GLN:CG	2.62	0.67
1:A:165:THR:HG21	1:A:168:SER:CA	2.24	0.67
1:A:59:TYR:CZ	1:A:216:LEU:HB2	2.31	0.66
1:A:309:VAL:HG21	1:A:325:GLN:HB2	1.77	0.66
1:A:207:LEU:HB2	1:A:270:ILE:HD11	1.78	0.66
1:A:235:GLU:H	1:A:235:GLU:CD	1.97	0.65
1:A:271:GLN:O	1:A:272:MET:CB	2.35	0.65
1:A:281:GLY:O	1:A:282:HIS:HB2	1.94	0.65
1:A:47:LYS:HB2	1:A:138:THR:OG1	1.97	0.65
1:A:203:ASP:O	1:A:272:MET:HG3	1.96	0.65
1:A:165:THR:HG22	1:A:168:SER:C	2.16	0.65
1:A:254:GLY:C	3:A:487:HOH:O	2.34	0.65
1:A:272:MET:CE	1:A:275:GLY:HA2	2.27	0.65
1:A:323:ARG:HE	1:A:366:ASN:ND2	1.89	0.65
1:A:304:GLY:HA3	1:A:328:GLY:HA3	1.79	0.64
1:A:350:ARG:HD2	3:A:559:HOH:O	1.96	0.64
1:A:330:GLY:O	3:A:456:HOH:O	2.13	0.64
1:A:36:LYS:O	3:A:441:HOH:O	2.14	0.64
1:A:382:VAL:HB	3:A:525:HOH:O	1.97	0.64
1:A:70:THR:HA	1:A:82:LEU:HD11	1.79	0.64
1:A:394:LYS:HD2	1:A:394:LYS:O	1.98	0.64
1:A:343:GLU:O	1:A:343:GLU:OE2	2.15	0.64
1:A:323:ARG:NE	1:A:366:ASN:HD21	1.89	0.63
1:A:185:CYS:HB3	1:A:283:LEU:HD22	1.81	0.63
1:A:46:ILE:HG23	1:A:138:THR:OG1	1.98	0.63
1:A:311:GLU:HB2	3:A:613:HOH:O	1.98	0.63
1:A:165:THR:HG21	1:A:168:SER:N	2.12	0.63
1:A:341:ASP:HB3	1:A:348:LEU:CD1	2.29	0.62
1:A:21:VAL:HG11	1:A:287:LEU:HD12	1.80	0.62
1:A:165:THR:CG2	1:A:168:SER:CA	2.78	0.62
1:A:204:LYS:HA	1:A:271:GLN:HB3	1.80	0.62

Continued on next page...

Continued from previous page...

Atom-1	Atom-2	Interatomic distance (Å)	Clash overlap (Å)
1:A:232:ILE:HG22	1:A:233:GLN:HG3	1.83	0.61
1:A:39:PRO:HD3	1:A:294:LEU:HD23	1.82	0.61
1:A:174:GLU:O	1:A:174:GLU:HG2	2.01	0.61
1:A:127:GLY:HA3	1:A:213:PHE:CZ	2.35	0.61
1:A:65:LEU:CG	1:A:252:VAL:HG22	2.30	0.61
1:A:344:LYS:O	1:A:345:ARG:HB2	2.00	0.61
1:A:51:LYS:O	1:A:52:GLN:HG2	2.01	0.61
1:A:148:GLU:OE2	3:A:595:HOH:O	2.16	0.61
1:A:138:THR:HG22	1:A:163:LYS:HD3	1.81	0.61
1:A:165:THR:CG2	1:A:167:GLN:C	2.69	0.61
1:A:171:THR:HG23	3:A:577:HOH:O	2.00	0.61
1:A:165:THR:HG23	1:A:167:GLN:C	2.22	0.60
1:A:279:PHE:HE2	1:A:281:GLY:O	1.85	0.60
1:A:35:ALA:O	1:A:36:LYS:HB3	2.01	0.60
1:A:197:VAL:N	1:A:208:VAL:O	2.33	0.59
1:A:64:LYS:HB3	1:A:64:LYS:HZ3	1.67	0.59
1:A:153:ASN:OD1	1:A:155:THR:HB	2.03	0.59
1:A:196:MET:HE3	1:A:207:LEU:O	2.02	0.59
1:A:254:GLY:HA3	3:A:487:HOH:O	2.02	0.59
1:A:51:LYS:C	1:A:52:GLN:HG2	2.23	0.59
1:A:165:THR:O	1:A:166:PRO:C	2.37	0.59
1:A:174:GLU:HB2	3:A:455:HOH:O	2.03	0.58
1:A:183:MET:HG2	1:A:287:LEU:HD23	1.85	0.58
1:A:188:ARG:O	1:A:189:THR:HB	2.02	0.58
1:A:20:TRP:N	1:A:20:TRP:CD2	2.71	0.58
1:A:280:THR:HG22	3:A:404:HOH:O	1.84	0.58
1:A:42:ASP:OD1	1:A:144:HIS:NE2	2.36	0.58
1:A:272:MET:HE2	1:A:275:GLY:HA2	1.85	0.58
1:A:139:VAL:O	1:A:162:VAL:HG22	2.03	0.58
1:A:193:PHE:CZ	1:A:207:LEU:HD21	2.39	0.58
1:A:273:SER:O	1:A:276:ASN:HB2	2.03	0.58
1:A:164:ILE:HD11	1:A:185:CYS:HB2	1.85	0.58
1:A:316:GLN:HG3	3:A:582:HOH:O	2.03	0.58
1:A:160:LYS:HE2	1:A:174:GLU:CG	2.33	0.57
1:A:64:LYS:NZ	1:A:120:THR:OG1	2.33	0.57
1:A:36:LYS:CB	3:A:441:HOH:O	2.31	0.57
1:A:256:GLN:NE2	3:A:484:HOH:O	2.38	0.57
1:A:294:LEU:HD13	1:A:297:MET:CE	2.35	0.56
1:A:40:THR:O	1:A:41:LEU:HD23	2.04	0.56
1:A:192:ASP:O	1:A:196:MET:HG2	2.05	0.56
1:A:80:PRO:HG2	1:A:112:GLY:C	2.26	0.56

Continued on next page...

Continued from previous page...

Atom-1	Atom-2	Interatomic distance (Å)	Clash overlap (Å)
1:A:266:GLY:O	1:A:267:ALA:O	2.23	0.56
1:A:36:LYS:C	1:A:38:LYS:H	2.07	0.56
1:A:220:TRP:CE3	1:A:222:PRO:HD3	2.41	0.56
1:A:240:PHE:CD1	1:A:250:VAL:HG22	2.41	0.56
1:A:260:MET:O	1:A:264:LEU:HD22	2.05	0.56
1:A:50:ALA:HB1	1:A:53:PRO:HG2	1.88	0.56
1:A:26:GLU:HG2	1:A:29:SER:HB3	1.88	0.56
1:A:164:ILE:O	1:A:164:ILE:HG12	2.05	0.55
1:A:254:GLY:CA	3:A:487:HOH:O	2.54	0.55
1:A:267:ALA:O	1:A:269:GLU:HG3	2.06	0.55
2:A:401:NDG:O1	3:A:561:HOH:O	2.18	0.55
1:A:100:GLY:H	1:A:103:ASN:HD21	1.54	0.55
1:A:190:GLY:O	1:A:191:LEU:O	2.24	0.55
1:A:328:GLY:O	1:A:361:LYS:HE3	2.06	0.55
1:A:39:PRO:HD3	1:A:294:LEU:CD2	2.37	0.55
1:A:42:ASP:OD1	1:A:144:HIS:CD2	2.60	0.55
1:A:27:HIS:CD2	1:A:279:PHE:HB3	2.41	0.55
1:A:341:ASP:OD2	1:A:346:HIS:HB3	2.08	0.54
1:A:165:THR:HG23	1:A:167:GLN:N	2.22	0.54
1:A:309:VAL:CG2	1:A:325:GLN:HB2	2.38	0.54
1:A:3:CYS:SG	1:A:42:ASP:OD2	2.66	0.54
1:A:72:SER:CB	1:A:113:ILE:HG22	2.30	0.54
1:A:160:LYS:HE2	1:A:174:GLU:HG2	1.89	0.53
1:A:21:VAL:CG1	1:A:287:LEU:HD12	2.37	0.53
1:A:132:PRO:O	1:A:135:LEU:N	2.30	0.53
1:A:203:ASP:OD1	1:A:272:MET:HE3	2.07	0.53
1:A:373:PHE:HA	1:A:393:LYS:HB3	1.91	0.53
1:A:132:PRO:O	1:A:133:GLU:C	2.47	0.53
1:A:383:GLU:N	3:A:525:HOH:O	2.38	0.53
1:A:206:TRP:CD1	1:A:269:GLU:HG2	2.45	0.52
1:A:119:PHE:CG	1:A:234:LYS:HD2	2.44	0.52
1:A:276:ASN:HB3	3:A:448:HOH:O	2.09	0.52
1:A:20:TRP:CD1	3:A:416:HOH:O	2.52	0.52
1:A:294:LEU:HD13	1:A:297:MET:HE2	1.91	0.52
1:A:293:GLN:HB3	3:A:528:HOH:O	2.09	0.52
1:A:184:GLU:HB3	1:A:286:ARG:HG3	1.91	0.51
1:A:148:GLU:HG3	1:A:364:PRO:HB2	1.92	0.51
1:A:196:MET:HA	1:A:208:VAL:O	2.10	0.51
1:A:282:HIS:O	1:A:283:LEU:HB2	2.11	0.51
1:A:267:ALA:O	1:A:269:GLU:N	2.44	0.51
1:A:165:THR:CG2	1:A:165:THR:O	2.58	0.51

Continued on next page...

Continued from previous page...

Atom-1	Atom-2	Interatomic distance (Å)	Clash overlap (Å)
1:A:201:MET:HE1	1:A:257:GLU:HG3	1.93	0.51
1:A:339:ILE:HA	1:A:377:TYR:O	2.10	0.50
1:A:202:LYS:HB3	3:A:406:HOH:O	2.11	0.50
1:A:56:LEU:O	1:A:56:LEU:HD23	2.12	0.50
1:A:131:GLN:O	1:A:132:PRO:C	2.48	0.50
1:A:385:GLY:N	3:A:426:HOH:O	2.45	0.50
1:A:250:VAL:C	1:A:251:VAL:HG12	2.32	0.50
1:A:241:LYS:HD3	3:A:569:HOH:O	2.12	0.50
1:A:255:SER:N	3:A:487:HOH:O	2.45	0.49
1:A:199:LEU:O	1:A:205:ALA:HA	2.12	0.49
1:A:289:MET:O	1:A:292:LEU:N	2.38	0.49
1:A:305:LYS:O	1:A:327:GLU:HG3	2.12	0.49
1:A:373:PHE:HE1	1:A:394:LYS:O	1.96	0.49
1:A:201:MET:CE	1:A:257:GLU:HG3	2.43	0.49
1:A:325:GLN:HG2	3:A:435:HOH:O	2.12	0.49
1:A:16:SER:OG	1:A:36:LYS:NZ	2.45	0.49
1:A:279:PHE:HE2	1:A:281:GLY:C	2.15	0.49
2:A:401:NDG:C7	3:A:561:HOH:O	2.60	0.49
1:A:73:ARG:HG3	1:A:80:PRO:HD3	1.88	0.49
1:A:341:ASP:OD2	1:A:346:HIS:CB	2.61	0.48
1:A:21:VAL:HG12	1:A:287:LEU:HB2	1.95	0.48
1:A:103:ASN:C	1:A:103:ASN:HD22	2.17	0.48
1:A:326:TYR:CZ	1:A:328:GLY:HA3	2.47	0.48
1:A:181:VAL:HG22	1:A:182:THR:N	2.28	0.48
1:A:394:LYS:N	3:A:509:HOH:O	2.46	0.48
1:A:125:MET:HB3	1:A:201:MET:HG2	1.96	0.48
1:A:75:PRO:HD3	1:A:99:ARG:HB2	1.95	0.48
1:A:1:MET:HG2	1:A:144:HIS:HA	1.96	0.48
1:A:20:TRP:N	1:A:20:TRP:CE3	2.81	0.48
1:A:70:THR:HG23	3:A:482:HOH:O	2.12	0.48
1:A:19:SER:O	1:A:288:ARG:HA	2.14	0.48
1:A:198:LEU:HD12	1:A:206:TRP:O	2.14	0.48
1:A:240:PHE:CE1	1:A:250:VAL:HG22	2.49	0.48
1:A:265:THR:CA	3:A:548:HOH:O	2.05	0.48
1:A:295:LYS:HB3	3:A:571:HOH:O	2.14	0.48
1:A:296:GLY:N	3:A:524:HOH:O	1.80	0.47
1:A:219:PRO:HA	1:A:232:ILE:O	2.15	0.47
1:A:251:VAL:HG23	1:A:252:VAL:O	2.15	0.47
1:A:270:ILE:HG23	1:A:278:LEU:O	2.14	0.47
1:A:191:LEU:HD11	1:A:196:MET:CE	2.45	0.47
1:A:203:ASP:CB	3:A:406:HOH:O	2.58	0.47

Continued on next page...

Continued from previous page...

Atom-1	Atom-2	Interatomic distance (Å)	Clash overlap (Å)
1:A:188:ARG:HB3	1:A:282:HIS:HB3	1.96	0.47
1:A:356:PRO:HD2	3:A:473:HOH:O	2.15	0.47
1:A:374:GLY:H	1:A:393:LYS:HB3	1.80	0.47
1:A:169:SER:O	1:A:170:ILE:CG2	2.64	0.46
1:A:311:GLU:O	1:A:312:ILE:C	2.52	0.46
1:A:355:ASN:N	1:A:356:PRO:HD3	2.30	0.46
1:A:46:ILE:HG23	1:A:138:THR:HG1	1.80	0.46
1:A:62:GLU:HG2	1:A:122:LYS:HB2	1.97	0.46
1:A:357:ILE:N	3:A:601:HOH:O	2.34	0.46
1:A:289:MET:O	1:A:292:LEU:HB2	2.15	0.46
1:A:36:LYS:C	1:A:38:LYS:N	2.69	0.46
1:A:165:THR:HG23	1:A:167:GLN:CA	2.46	0.46
1:A:379:ILE:HA	1:A:387:LEU:O	2.16	0.46
1:A:100:GLY:H	1:A:103:ASN:ND2	2.13	0.46
1:A:262:THR:O	1:A:265:THR:OG1	2.28	0.46
1:A:54:ALA:O	1:A:128:LYS:HA	2.16	0.46
1:A:132:PRO:O	1:A:134:ASN:N	2.48	0.45
1:A:76:THR:O	1:A:78:GLY:N	2.48	0.45
1:A:173:ALA:O	1:A:180:THR:HA	2.16	0.45
1:A:188:ARG:CB	1:A:282:HIS:HB3	2.46	0.45
1:A:343:GLU:O	1:A:344:LYS:C	2.55	0.45
1:A:157:LYS:HA	1:A:157:LYS:HD3	1.49	0.45
1:A:274:SER:OG	3:A:583:HOH:O	2.21	0.45
1:A:60:CYS:HB3	1:A:219:PRO:HB2	1.98	0.45
1:A:80:PRO:CB	1:A:114:VAL:HG12	2.43	0.45
1:A:56:LEU:HD12	1:A:129:ILE:HD11	1.99	0.45
1:A:95:SER:O	1:A:113:ILE:HG13	2.17	0.45
1:A:165:THR:HG22	1:A:168:SER:N	2.26	0.45
1:A:307:LYS:NZ	1:A:307:LYS:HB3	2.32	0.45
1:A:12:VAL:O	1:A:33:THR:HA	2.17	0.45
1:A:37:ASN:ND2	3:A:614:HOH:O	2.43	0.45
1:A:183:MET:HG2	1:A:287:LEU:CD2	2.46	0.44
1:A:64:LYS:HZ2	1:A:120:THR:CB	2.30	0.44
1:A:188:ARG:HB3	1:A:282:HIS:CG	2.51	0.44
1:A:87:ASP:OD1	1:A:89:ARG:HB2	2.17	0.44
1:A:318:GLY:O	1:A:393:LYS:HE3	2.17	0.44
1:A:350:ARG:HD3	1:A:370:GLU:OE1	2.17	0.44
1:A:260:MET:O	1:A:264:LEU:CD2	2.66	0.44
1:A:69:THR:C	1:A:70:THR:HG22	2.36	0.44
1:A:71:ASP:OD1	1:A:81:THR:N	2.43	0.44
1:A:169:SER:O	1:A:170:ILE:HG23	2.17	0.44

Continued on next page...

Continued from previous page...

Atom-1	Atom-2	Interatomic distance (Å)	Clash overlap (Å)
1:A:190:GLY:O	1:A:191:LEU:C	2.56	0.44
1:A:72:SER:CB	1:A:113:ILE:CG2	2.93	0.44
1:A:174:GLU:O	1:A:174:GLU:CG	2.66	0.43
1:A:165:THR:CG2	1:A:168:SER:OG	2.65	0.43
1:A:73:ARG:HB3	1:A:77:GLN:HB2	1.99	0.43
1:A:46:ILE:HG22	1:A:138:THR:O	2.19	0.43
1:A:75:PRO:HD3	1:A:99:ARG:CB	2.48	0.43
1:A:36:LYS:CG	3:A:441:HOH:O	2.63	0.43
1:A:294:LEU:HD13	1:A:297:MET:HE3	2.01	0.43
1:A:36:LYS:HA	3:A:520:HOH:O	2.18	0.43
1:A:341:ASP:CB	1:A:348:LEU:HD11	2.43	0.42
1:A:188:ARG:O	1:A:189:THR:CB	2.64	0.42
1:A:203:ASP:N	3:A:406:HOH:O	2.17	0.42
1:A:36:LYS:CD	3:A:441:HOH:O	2.67	0.42
1:A:2:ARG:NH1	1:A:154:ASP:OD2	2.52	0.42
1:A:299:TYR:N	1:A:299:TYR:CD1	2.85	0.42
1:A:51:LYS:O	1:A:52:GLN:CG	2.66	0.42
1:A:59:TYR:CD1	1:A:218:LEU:HB2	2.54	0.42
1:A:130:VAL:HG23	3:A:425:HOH:O	2.18	0.42
1:A:59:TYR:CE2	1:A:216:LEU:HD12	2.55	0.42
1:A:100:GLY:HA2	1:A:107:LEU:O	2.20	0.42
1:A:362:ASP:O	1:A:362:ASP:OD1	2.37	0.42
1:A:36:LYS:HB2	1:A:36:LYS:HE3	1.85	0.42
1:A:86:GLN:N	1:A:86:GLN:NE2	2.68	0.42
1:A:148:GLU:O	1:A:148:GLU:HG2	2.19	0.42
1:A:138:THR:HG22	1:A:163:LYS:CD	2.47	0.41
1:A:202:LYS:CA	1:A:202:LYS:CE	2.83	0.41
1:A:39:PRO:HD3	1:A:294:LEU:CG	2.51	0.41
1:A:383:GLU:HA	1:A:384:PRO:C	2.38	0.41
1:A:93:LYS:HB3	1:A:240:PHE:CD1	2.56	0.41
1:A:57:ARG:HG2	1:A:58:LYS:N	2.35	0.41
1:A:119:PHE:CB	1:A:234:LYS:HD2	2.50	0.41
1:A:39:PRO:HD3	1:A:294:LEU:HG	2.02	0.41
1:A:60:CYS:HG	1:A:121:CYS:CB	2.34	0.41
1:A:65:LEU:HD23	1:A:65:LEU:HA	1.78	0.41
1:A:98:ASP:O	1:A:99:ARG:HD2	2.20	0.41
1:A:302:CYS:HB3	1:A:326:TYR:CE1	2.55	0.41
1:A:266:GLY:C	1:A:267:ALA:O	2.59	0.41
1:A:3:CYS:HB3	1:A:9:ARG:CD	2.51	0.41
1:A:164:ILE:CG1	1:A:164:ILE:O	2.65	0.41
1:A:207:LEU:HA	1:A:207:LEU:HD12	1.94	0.41

Continued on next page...

Continued from previous page...

Atom-1	Atom-2	Interatomic distance (Å)	Clash overlap (Å)
1:A:269:GLU:H	1:A:269:GLU:HG3	1.64	0.41
1:A:272:MET:HE1	1:A:275:GLY:HA2	1.99	0.41
1:A:326:TYR:HB2	1:A:358:VAL:HG21	2.02	0.41
1:A:145:SER:CB	3:A:519:HOH:O	2.68	0.40
1:A:394:LYS:CA	3:A:509:HOH:O	2.68	0.40
1:A:137:TYR:N	1:A:137:TYR:CD1	2.89	0.40
1:A:211:GLN:HA	1:A:211:GLN:NE2	2.35	0.40
1:A:250:VAL:C	1:A:251:VAL:CG1	2.89	0.40
1:A:335:ILE:HB	1:A:356:PRO:HB2	2.02	0.40
1:A:165:THR:CG2	1:A:168:SER:C	2.89	0.40
1:A:185:CYS:HB3	1:A:283:LEU:CD2	2.49	0.40
1:A:36:LYS:HD2	3:A:441:HOH:O	2.20	0.40
1:A:380:ILE:HB	1:A:387:LEU:HB2	2.03	0.40

All (1) symmetry-related close contacts are listed below. The label for Atom-2 includes the symmetry operator and encoded unit-cell translations to be applied.

Atom-1	Atom-2	Interatomic distance (Å)	Clash overlap (Å)
1:A:241:LYS:NZ	1:A:269:GLU:OE1[4_555]	2.14	0.06

5.3 Torsion angles [i](#)

5.3.1 Protein backbone [i](#)

In the following table, the Percentiles column shows the percent Ramachandran outliers of the chain as a percentile score with respect to all X-ray entries followed by that with respect to entries of similar resolution.

The Analysed column shows the number of residues for which the backbone conformation was analysed, and the total number of residues.

Mol	Chain	Analysed	Favoured	Allowed	Outliers	Percentiles
1	A	384/395 (97%)	329 (86%)	30 (8%)	25 (6%)	1 1

All (25) Ramachandran outliers are listed below:

Mol	Chain	Res	Type
1	A	53	PRO
1	A	77	GLN
1	A	133	GLU

Continued on next page...

Continued from previous page...

Mol	Chain	Res	Type
1	A	189	THR
1	A	191	LEU
1	A	267	ALA
1	A	271	GLN
1	A	272	MET
1	A	283	LEU
1	A	345	ARG
1	A	346	HIS
1	A	384	PRO
1	A	148	GLU
1	A	151	VAL
1	A	266	GLY
1	A	202	LYS
1	A	15	VAL
1	A	168	SER
1	A	170	ILE
1	A	290	ASP
1	A	36	LYS
1	A	132	PRO
1	A	230	ASN
1	A	75	PRO
1	A	385	GLY

5.3.2 Protein sidechains [i](#)

In the following table, the Percentiles column shows the percent sidechain outliers of the chain as a percentile score with respect to all X-ray entries followed by that with respect to entries of similar resolution.

The Analysed column shows the number of residues for which the sidechain conformation was analysed, and the total number of residues.

Mol	Chain	Analysed	Rotameric	Outliers	Percentiles
1	A	339/342 (99%)	297 (88%)	42 (12%)	4 8

All (42) residues with a non-rotameric sidechain are listed below:

Mol	Chain	Res	Type
1	A	2	ARG
1	A	10	ASP
1	A	15	VAL
1	A	16	SER

Continued on next page...

Continued from previous page...

Mol	Chain	Res	Type
1	A	20	TRP
1	A	21	VAL
1	A	29	SER
1	A	39	PRO
1	A	53	PRO
1	A	64	LYS
1	A	70	THR
1	A	75	PRO
1	A	76	THR
1	A	80	PRO
1	A	86	GLN
1	A	103	ASN
1	A	107	LEU
1	A	131	GLN
1	A	132	PRO
1	A	164	ILE
1	A	165	THR
1	A	166	PRO
1	A	168	SER
1	A	169	SER
1	A	170	ILE
1	A	180	THR
1	A	188	ARG
1	A	202	LYS
1	A	222	PRO
1	A	249	ASP
1	A	252	VAL
1	A	272	MET
1	A	283	LEU
1	A	286	ARG
1	A	293	GLN
1	A	305	LYS
1	A	327	GLU
1	A	331	SER
1	A	343	GLU
1	A	345	ARG
1	A	383	GLU
1	A	394	LYS

Some sidechains can be flipped to improve hydrogen bonding and reduce clashes. All (12) such sidechains are listed below:

Mol	Chain	Res	Type
1	A	67	ASN
1	A	86	GLN
1	A	103	ASN
1	A	131	GLN
1	A	149	HIS
1	A	153	ASN
1	A	211	GLN
1	A	230	ASN
1	A	248	GLN
1	A	256	GLN
1	A	316	GLN
1	A	366	ASN

5.3.3 RNA [i](#)

There are no RNA molecules in this entry.

5.4 Non-standard residues in protein, DNA, RNA chains [i](#)

There are no non-standard protein/DNA/RNA residues in this entry.

5.5 Carbohydrates [i](#)

There are no monosaccharides in this entry.

5.6 Ligand geometry [i](#)

2 ligands are modelled in this entry.

In the following table, the Counts columns list the number of bonds (or angles) for which Mogul statistics could be retrieved, the number of bonds (or angles) that are observed in the model and the number of bonds (or angles) that are defined in the Chemical Component Dictionary. The Link column lists molecule types, if any, to which the group is linked. The Z score for a bond length (or angle) is the number of standard deviations the observed value is removed from the expected value. A bond length (or angle) with $|Z| > 2$ is considered an outlier worth inspection. RMSZ is the root-mean-square of all Z scores of the bond lengths (or angles).

Mol	Type	Chain	Res	Link	Bond lengths			Bond angles		
					Counts	RMSZ	# Z > 2	Counts	RMSZ	# Z > 2
2	NDG	A	401	-	15,15,15	0.58	0	21,21,21	0.94	1 (4%)
2	NDG	A	402	-	15,15,15	0.78	0	21,21,21	1.01	2 (9%)

In the following table, the Chirals column lists the number of chiral outliers, the number of chiral centers analysed, the number of these observed in the model and the number defined in the Chemical Component Dictionary. Similar counts are reported in the Torsion and Rings columns. '-' means no outliers of that kind were identified.

Mol	Type	Chain	Res	Link	Chirals	Torsions	Rings
2	NDG	A	401	-	-	5/6/26/26	0/1/1/1
2	NDG	A	402	-	-	5/6/26/26	0/1/1/1

There are no bond length outliers.

All (3) bond angle outliers are listed below:

Mol	Chain	Res	Type	Atoms	Z	Observed(°)	Ideal(°)
2	A	401	NDG	C1-C2-C3	-2.75	106.80	110.54
2	A	402	NDG	C3-C4-C5	2.57	114.83	110.24
2	A	402	NDG	C1-C2-C3	-2.12	107.66	110.54

There are no chirality outliers.

All (10) torsion outliers are listed below:

Mol	Chain	Res	Type	Atoms
2	A	402	NDG	C8-C7-N2-C2
2	A	402	NDG	O7-C7-N2-C2
2	A	402	NDG	C4-C5-C6-O6
2	A	402	NDG	O5-C5-C6-O6
2	A	401	NDG	C3-C2-N2-C7
2	A	402	NDG	C3-C2-N2-C7
2	A	401	NDG	C4-C5-C6-O6
2	A	401	NDG	O5-C5-C6-O6
2	A	401	NDG	C1-C2-N2-C7
2	A	401	NDG	C8-C7-N2-C2

There are no ring outliers.

2 monomers are involved in 7 short contacts:

Mol	Chain	Res	Type	Clashes	Symm-Clashes
2	A	401	NDG	4	0
2	A	402	NDG	3	0

5.7 Other polymers [i](#)

There are no such residues in this entry.

5.8 Polymer linkage issues

There are no chain breaks in this entry.

6 Fit of model and data [i](#)

6.1 Protein, DNA and RNA chains [i](#)

In the following table, the column labelled '#RSRZ > 2' contains the number (and percentage) of RSRZ outliers, followed by percent RSRZ outliers for the chain as percentile scores relative to all X-ray entries and entries of similar resolution. The OWAB column contains the minimum, median, 95th percentile and maximum values of the occupancy-weighted average B-factor per residue. The column labelled 'Q < 0.9' lists the number of (and percentage) of residues with an average occupancy less than 0.9.

Mol	Chain	Analysed	<RSRZ>	#RSRZ>2	OWAB(Å ²)	Q<0.9
1	A	390/395 (98%)	0.33	16 (4%) 37 31	28, 52, 94, 129	0

All (16) RSRZ outliers are listed below:

Mol	Chain	Res	Type	RSRZ
1	A	273	SER	6.8
1	A	266	GLY	4.7
1	A	395	GLY	4.2
1	A	277	LEU	4.0
1	A	344	LYS	3.2
1	A	166	PRO	2.8
1	A	362	ASP	2.7
1	A	167	GLN	2.6
1	A	348	LEU	2.5
1	A	16	SER	2.5
1	A	272	MET	2.5
1	A	270	ILE	2.4
1	A	20	TRP	2.3
1	A	150	ALA	2.2
1	A	157	LYS	2.2
1	A	156	GLY	2.0

6.2 Non-standard residues in protein, DNA, RNA chains [i](#)

There are no non-standard protein/DNA/RNA residues in this entry.

6.3 Carbohydrates [i](#)

There are no monosaccharides in this entry.

6.4 Ligands [i](#)

In the following table, the Atoms column lists the number of modelled atoms in the group and the number defined in the chemical component dictionary. The B-factors column lists the minimum, median, 95th percentile and maximum values of B factors of atoms in the group. The column labelled 'Q< 0.9' lists the number of atoms with occupancy less than 0.9.

Mol	Type	Chain	Res	Atoms	RSCC	RSR	B-factors(Å ²)	Q<0.9
2	NDG	A	402	15/15	0.78	0.29	73,78,81,84	0
2	NDG	A	401	15/15	0.79	0.26	89,95,99,101	0

6.5 Other polymers [i](#)

There are no such residues in this entry.