



Full wwPDB X-ray Structure Validation Report ⓘ

Aug 7, 2020 – 08:45 PM BST

PDB ID : 1SK9
Title : Crystallographic snapshots of *Aspergillus fumigatus* phytase revealing its enzymatic dynamics
Authors : Liu, Q.; Huang, Q.; Lei, X.G.; Hao, Q.
Deposited on : 2004-03-04
Resolution : 1.64 Å(reported)

This is a Full wwPDB X-ray Structure Validation Report for a publicly released PDB entry.

We welcome your comments at validation@mail.wwpdb.org

A user guide is available at

<https://www.wwpdb.org/validation/2017/XrayValidationReportHelp>

with specific help available everywhere you see the ⓘ symbol.

The following versions of software and data (see [references ⓘ](#)) were used in the production of this report:

MolProbity : 4.02b-467
Mogul : 1.8.5 (274361), CSD as541be (2020)
Xtriage (Phenix) : 1.13
EDS : 2.13.1
Percentile statistics : 20191225.v01 (using entries in the PDB archive December 25th 2019)
Refmac : 5.8.0158
CCP4 : 7.0.044 (Gargrove)
Ideal geometry (proteins) : Engh & Huber (2001)
Ideal geometry (DNA, RNA) : Parkinson et al. (1996)
Validation Pipeline (wwPDB-VP) : 2.13.1

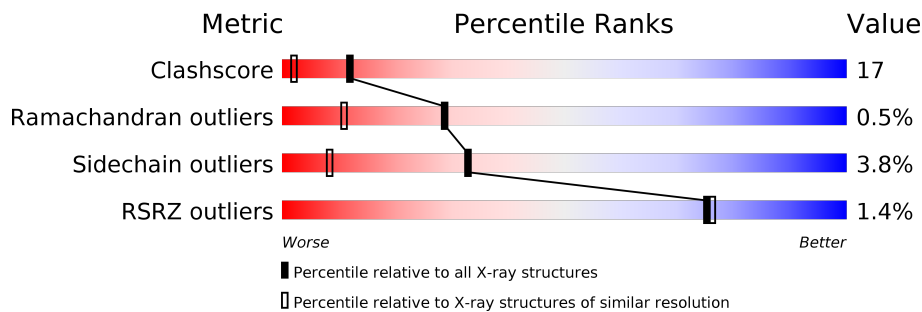
1 Overall quality at a glance

The following experimental techniques were used to determine the structure:

X-RAY DIFFRACTION

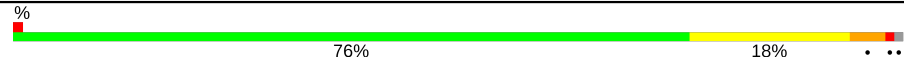
The reported resolution of this entry is 1.64 Å.

Percentile scores (ranging between 0-100) for global validation metrics of the entry are shown in the following graphic. The table shows the number of entries on which the scores are based.



Metric	Whole archive (#Entries)	Similar resolution (#Entries, resolution range(Å))
Clashscore	141614	3268 (1.66-1.62)
Ramachandran outliers	138981	3215 (1.66-1.62)
Sidechain outliers	138945	3215 (1.66-1.62)
RSRZ outliers	127900	3079 (1.66-1.62)

The table below summarises the geometric issues observed across the polymeric chains and their fit to the electron density. The red, orange, yellow and green segments on the lower bar indicate the fraction of residues that contain outliers for ≥ 3 , 2, 1 and 0 types of geometric quality criteria respectively. A grey segment represents the fraction of residues that are not modelled. The numeric value for each fraction is indicated below the corresponding segment, with a dot representing fractions $\leq 5\%$. The upper red bar (where present) indicates the fraction of residues that have poor fit to the electron density. The numeric value is given above the bar.

Mol	Chain	Length	Quality of chain
1	A	439	 % 76% 18% ...

2 Entry composition [i](#)

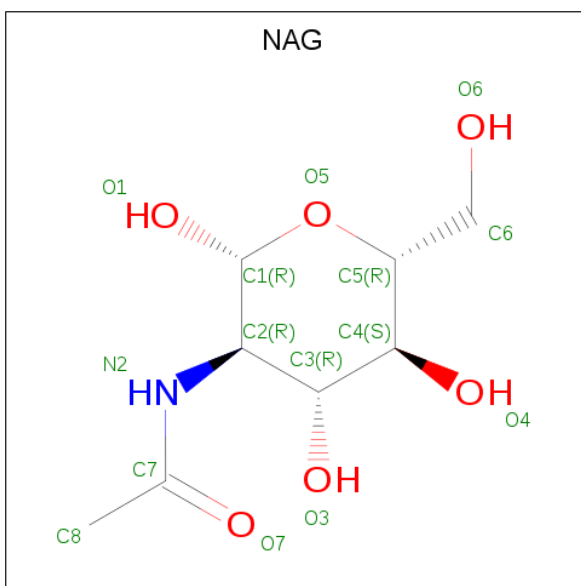
There are 4 unique types of molecules in this entry. The entry contains 4045 atoms, of which 0 are hydrogens and 0 are deuteriums.

In the tables below, the ZeroOcc column contains the number of atoms modelled with zero occupancy, the AltConf column contains the number of residues with at least one atom in alternate conformation and the Trace column contains the number of residues modelled with at most 2 atoms.

- Molecule 1 is a protein called 3-phytase A.

Mol	Chain	Residues	Atoms					ZeroOcc	AltConf	Trace
			Total	C	N	O	S			
1	A	435	3374	2140	573	646	15	0	0	0

- Molecule 2 is 2-acetamido-2-deoxy-beta-D-glucopyranose (three-letter code: NAG) (formula: $C_8H_{15}NO_6$).



Mol	Chain	Residues	Atoms				ZeroOcc	AltConf
			Total	C	N	O		
2	A	1	14	8	1	5	0	0
2	A	1	14	8	1	5	0	0
2	A	1	14	8	1	5	0	0
2	A	1	14	8	1	5	0	0

- Molecule 3 is PHOSPHATE ION (three-letter code: PO4) (formula: O_4P).



Mol	Chain	Residues	Atoms			ZeroOcc	AltConf
3	A	1	Total	O	P	0	0
			5	4	1		

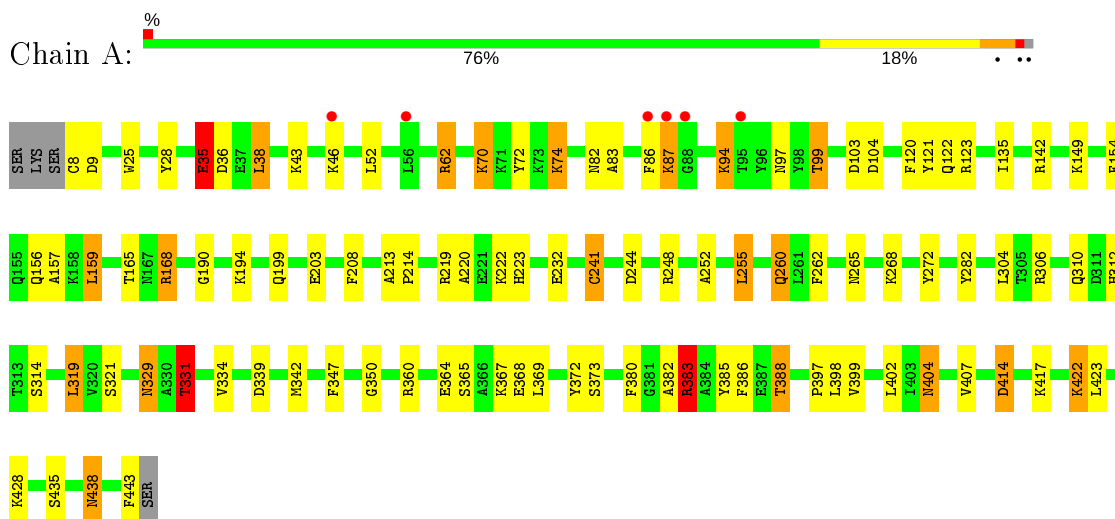
- Molecule 4 is water.

Mol	Chain	Residues	Atoms		ZeroOcc	AltConf
4	A	610	Total	O	0	0
			610	610		

3 Residue-property plots [i](#)

These plots are drawn for all protein, RNA, DNA and oligosaccharide chains in the entry. The first graphic for a chain summarises the proportions of the various outlier classes displayed in the second graphic. The second graphic shows the sequence view annotated by issues in geometry and electron density. Residues are color-coded according to the number of geometric quality criteria for which they contain at least one outlier: green = 0, yellow = 1, orange = 2 and red = 3 or more. A red dot above a residue indicates a poor fit to the electron density ($RSRZ > 2$). Stretches of 2 or more consecutive residues without any outlier are shown as a green connector. Residues present in the sample, but not in the model, are shown in grey.

- Molecule 1: 3-phytase A



4 Data and refinement statistics

Property	Value	Source
Space group	C 1 2 1	Depositor
Cell constants a, b, c, α , β , γ	134.21Å 70.06Å 47.09Å 90.00° 93.63° 90.00°	Depositor
Resolution (Å)	30.00 – 1.64 28.65 – 1.64	Depositor EDS
% Data completeness (in resolution range)	(Not available) (30.00-1.64) 94.8 (28.65-1.64)	Depositor EDS
R_{merge}	(Not available)	Depositor
R_{sym}	(Not available)	Depositor
$\langle I/\sigma(I) \rangle$ ¹	2.35 (at 1.64Å)	Xtrriage
Refinement program	REFMAC 5.1.24	Depositor
R, R_{free}	0.153 , 0.188 0.160 , (Not available)	Depositor DCC
R_{free} test set	No test flags present.	wwPDB-VP
Wilson B-factor (Å ²)	18.3	Xtrriage
Anisotropy	0.088	Xtrriage
Bulk solvent k_{sol} (e/Å ³), B_{sol} (Å ²)	0.38 , 57.1	EDS
L-test for twinning ²	$\langle L \rangle = 0.49$, $\langle L^2 \rangle = 0.32$	Xtrriage
Estimated twinning fraction	No twinning to report.	Xtrriage
F_o, F_c correlation	0.97	EDS
Total number of atoms	4045	wwPDB-VP
Average B, all atoms (Å ²)	25.0	wwPDB-VP

Xtrriage's analysis on translational NCS is as follows: *The largest off-origin peak in the Patterson function is 5.68% of the height of the origin peak. No significant pseudotranslation is detected.*

¹Intensities estimated from amplitudes.

²Theoretical values of $\langle |L| \rangle$, $\langle L^2 \rangle$ for acentric reflections are 0.5, 0.333 respectively for untwinned datasets, and 0.375, 0.2 for perfectly twinned datasets.

5 Model quality i

5.1 Standard geometry i

Bond lengths and bond angles in the following residue types are not validated in this section: PO4, NAG

The Z score for a bond length (or angle) is the number of standard deviations the observed value is removed from the expected value. A bond length (or angle) with $|Z| > 5$ is considered an outlier worth inspection. RMSZ is the root-mean-square of all Z scores of the bond lengths (or angles).

Mol	Chain	Bond lengths		Bond angles	
		RMSZ	# Z >5	RMSZ	# Z >5
1	A	1.54	24/3455 (0.7%)	1.44	37/4687 (0.8%)

Chiral center outliers are detected by calculating the chiral volume of a chiral center and verifying if the center is modelled as a planar moiety or with the opposite hand. A planarity outlier is detected by checking planarity of atoms in a peptide group, atoms in a mainchain group or atoms of a sidechain that are expected to be planar.

Mol	Chain	#Chirality outliers	#Planarity outliers
1	A	0	1

All (24) bond length outliers are listed below:

Mol	Chain	Res	Type	Atoms	Z	Observed(Å)	Ideal(Å)
1	A	399	VAL	CB-CG1	7.51	1.68	1.52
1	A	35	GLU	CB-CG	7.17	1.65	1.52
1	A	168	ARG	CG-CD	6.63	1.68	1.51
1	A	282	TYR	CD1-CE1	6.58	1.49	1.39
1	A	220	ALA	CA-CB	6.45	1.66	1.52
1	A	8	CYS	N-CA	6.24	1.58	1.46
1	A	422	LYS	CE-NZ	6.14	1.64	1.49
1	A	262	PHE	CE1-CZ	6.08	1.48	1.37
1	A	208	PHE	CE1-CZ	6.00	1.48	1.37
1	A	72	TYR	CD2-CE2	5.72	1.48	1.39
1	A	157	ALA	CA-CB	5.68	1.64	1.52
1	A	121	TYR	CD1-CE1	5.67	1.47	1.39
1	A	252	ALA	CA-CB	5.57	1.64	1.52
1	A	372	TYR	CD1-CE1	5.47	1.47	1.39
1	A	435	SER	CB-OG	-5.35	1.35	1.42
1	A	386	PHE	CD2-CE2	5.33	1.50	1.39
1	A	382	ALA	CA-CB	5.32	1.63	1.52
1	A	74	LYS	CE-NZ	5.27	1.62	1.49

Continued on next page...

Continued from previous page...

Mol	Chain	Res	Type	Atoms	Z	Observed(Å)	Ideal(Å)
1	A	380	PHE	CE1-CZ	5.27	1.47	1.37
1	A	347	PHE	CE1-CZ	5.25	1.47	1.37
1	A	314	SER	CB-OG	5.22	1.49	1.42
1	A	154	PHE	CD2-CE2	5.22	1.49	1.39
1	A	404	ASN	CG-OD1	5.02	1.34	1.24
1	A	120	PHE	CE2-CZ	5.00	1.46	1.37

All (37) bond angle outliers are listed below:

Mol	Chain	Res	Type	Atoms	Z	Observed(°)	Ideal(°)
1	A	248	ARG	NE-CZ-NH2	-10.84	114.88	120.30
1	A	248	ARG	NE-CZ-NH1	9.94	125.27	120.30
1	A	380	PHE	CB-CG-CD2	-9.63	114.06	120.80
1	A	159	LEU	CB-CG-CD1	9.21	126.67	111.00
1	A	9	ASP	CB-CG-OD2	8.68	126.11	118.30
1	A	168	ARG	NE-CZ-NH1	8.49	124.54	120.30
1	A	123	ARG	NE-CZ-NH2	-8.42	116.09	120.30
1	A	62	ARG	NE-CZ-NH2	-8.41	116.09	120.30
1	A	168	ARG	NE-CZ-NH2	-7.78	116.41	120.30
1	A	339	ASP	CB-CG-OD1	7.37	124.93	118.30
1	A	36	ASP	CB-CG-OD2	7.03	124.63	118.30
1	A	272	TYR	CB-CG-CD1	-6.99	116.81	121.00
1	A	380	PHE	CB-CG-CD1	6.76	125.53	120.80
1	A	282	TYR	CB-CG-CD1	-6.72	116.97	121.00
1	A	414	ASP	CB-CG-OD2	6.24	123.91	118.30
1	A	268	LYS	CD-CE-NZ	-6.11	97.64	111.70
1	A	99	THR	OG1-CB-CG2	-6.05	96.08	110.00
1	A	149	LYS	CD-CE-NZ	-6.00	97.90	111.70
1	A	120	PHE	CB-CG-CD1	-5.88	116.68	120.80
1	A	319	LEU	CB-CG-CD1	-5.77	101.19	111.00
1	A	219	ARG	NE-CZ-NH1	5.74	123.17	120.30
1	A	373	SER	N-CA-CB	5.72	119.08	110.50
1	A	385	TYR	CB-CG-CD2	-5.65	117.61	121.00
1	A	103	ASP	CB-CG-OD1	5.58	123.32	118.30
1	A	255	LEU	CA-CB-CG	5.42	127.78	115.30
1	A	74	LYS	CD-CE-NZ	5.42	124.16	111.70
1	A	435	SER	CB-CA-C	5.35	120.27	110.10
1	A	123	ARG	NE-CZ-NH1	5.35	122.97	120.30
1	A	28	TYR	CB-CG-CD2	-5.33	117.80	121.00
1	A	260	GLN	CB-CG-CD	5.31	125.42	111.60
1	A	364	GLU	N-CA-C	-5.17	97.03	111.00
1	A	342	MET	CA-CB-CG	-5.16	104.53	113.30

Continued on next page...

Continued from previous page...

Mol	Chain	Res	Type	Atoms	Z	Observed(°)	Ideal(°)
1	A	369	LEU	CB-CG-CD2	-5.13	102.28	111.00
1	A	372	TYR	CG-CD1-CE1	-5.13	117.20	121.30
1	A	388	THR	CA-CB-CG2	-5.10	105.27	112.40
1	A	244	ASP	CB-CG-OD2	5.06	122.86	118.30
1	A	383	ARG	NE-CZ-NH2	-5.01	117.79	120.30

There are no chirality outliers.

All (1) planarity outliers are listed below:

Mol	Chain	Res	Type	Group
1	A	165	THR	Mainchain

5.2 Too-close contacts [i](#)

In the following table, the Non-H and H(model) columns list the number of non-hydrogen atoms and hydrogen atoms in the chain respectively. The H(added) column lists the number of hydrogen atoms added and optimized by MolProbity. The Clashes column lists the number of clashes within the asymmetric unit, whereas Symm-Clashes lists symmetry related clashes.

Mol	Chain	Non-H	H(model)	H(added)	Clashes	Symm-Clashes
1	A	3374	0	3275	110	0
2	A	56	0	51	7	0
3	A	5	0	0	0	0
4	A	610	0	0	79	2
All	All	4045	0	3326	116	2

The all-atom clashscore is defined as the number of clashes found per 1000 atoms (including hydrogen atoms). The all-atom clashscore for this structure is 17.

All (116) close contacts within the same asymmetric unit are listed below, sorted by their clash magnitude.

Atom-1	Atom-2	Interatomic distance (Å)	Clash overlap (Å)
1:A:122:GLN:HG2	4:A:1302:HOH:O	1.39	1.21
1:A:86:PHE:CD1	1:A:94:LYS:HG2	1.79	1.18
1:A:388:THR:HB	4:A:1281:HOH:O	1.44	1.17
1:A:414:ASP:HB2	4:A:1228:HOH:O	1.45	1.13
1:A:367:LYS:HE3	4:A:1001:HOH:O	1.50	1.11
1:A:365:SER:OG	1:A:368:GLU:HG3	1.57	1.04
1:A:168:ARG:HD2	4:A:1275:HOH:O	1.57	1.03

Continued on next page...

Continued from previous page...

Atom-1	Atom-2	Interatomic distance (Å)	Clash overlap (Å)
1:A:310:GLN:HG2	4:A:1249:HOH:O	1.60	1.00
1:A:38:LEU:HD21	1:A:367:LYS:HG2	1.42	0.98
1:A:310:GLN:HG2	4:A:1231:HOH:O	1.61	0.98
2:A:506:NAG:H62	4:A:1048:HOH:O	1.64	0.97
1:A:86:PHE:CG	1:A:94:LYS:HG2	2.00	0.96
1:A:87:LYS:HD3	4:A:1279:HOH:O	1.66	0.96
1:A:74:LYS:HE2	4:A:1278:HOH:O	1.67	0.95
2:A:506:NAG:H3	4:A:1274:HOH:O	1.68	0.93
1:A:86:PHE:CD1	1:A:94:LYS:CG	2.54	0.89
1:A:74:LYS:HE3	4:A:1282:HOH:O	1.72	0.89
1:A:232:GLU:HG2	4:A:980:HOH:O	1.71	0.89
1:A:38:LEU:CD2	1:A:367:LYS:HG2	2.05	0.85
1:A:360:ARG:HD2	4:A:1272:HOH:O	1.76	0.85
1:A:321:SER:HB3	4:A:1132:HOH:O	1.76	0.82
1:A:86:PHE:CD1	1:A:94:LYS:HD2	2.14	0.82
1:A:86:PHE:HD1	1:A:94:LYS:HD2	1.43	0.81
1:A:52:LEU:HB3	4:A:1281:HOH:O	1.83	0.78
1:A:360:ARG:CD	4:A:1272:HOH:O	2.31	0.77
1:A:94:LYS:HD3	4:A:1305:HOH:O	1.85	0.77
1:A:38:LEU:HD21	1:A:367:LYS:CG	2.14	0.76
2:A:506:NAG:H5	4:A:1011:HOH:O	1.86	0.75
1:A:331:THR:HG23	4:A:852:HOH:O	1.88	0.74
1:A:94:LYS:CD	4:A:1305:HOH:O	2.37	0.72
1:A:82:ASN:ND2	4:A:992:HOH:O	2.21	0.71
1:A:86:PHE:CD1	1:A:94:LYS:CD	2.73	0.71
2:A:506:NAG:C3	4:A:1274:HOH:O	2.35	0.66
1:A:194:LYS:HD2	4:A:1016:HOH:O	1.94	0.66
1:A:367:LYS:CE	4:A:1295:HOH:O	2.44	0.65
1:A:438:ASN:HD22	1:A:438:ASN:H	1.45	0.64
1:A:367:LYS:NZ	4:A:1304:HOH:O	2.30	0.63
1:A:414:ASP:CB	4:A:1291:HOH:O	2.46	0.63
1:A:74:LYS:NZ	4:A:1296:HOH:O	2.30	0.62
1:A:222:LYS:HE3	4:A:1279:HOH:O	2.00	0.62
1:A:310:GLN:CG	4:A:1231:HOH:O	2.34	0.62
1:A:97:ASN:ND2	4:A:1159:HOH:O	2.30	0.61
1:A:46:LYS:HE3	4:A:1078:HOH:O	2.00	0.61
1:A:94:LYS:HG3	4:A:1285:HOH:O	2.00	0.61
1:A:368:GLU:HG2	4:A:1299:HOH:O	2.02	0.59
1:A:367:LYS:CE	4:A:1304:HOH:O	2.50	0.58
1:A:46:LYS:CD	4:A:1078:HOH:O	2.51	0.57
1:A:104:ASP:OD1	4:A:977:HOH:O	2.18	0.56

Continued on next page...

Continued from previous page...

Atom-1	Atom-2	Interatomic distance (Å)	Clash overlap (Å)
1:A:367:LYS:HE2	4:A:1295:HOH:O	2.05	0.56
1:A:46:LYS:HD2	4:A:1293:HOH:O	2.04	0.56
1:A:367:LYS:HG3	4:A:1295:HOH:O	2.06	0.56
1:A:329:ASN:HD22	1:A:329:ASN:H	1.54	0.55
1:A:232:GLU:CG	4:A:980:HOH:O	2.43	0.55
1:A:86:PHE:CG	1:A:94:LYS:CG	2.84	0.54
1:A:304:LEU:HB3	1:A:423:LEU:HD11	1.89	0.54
1:A:70:LYS:NZ	1:A:70:LYS:CB	2.71	0.54
2:A:506:NAG:C5	4:A:1011:HOH:O	2.48	0.53
1:A:70:LYS:CD	4:A:1289:HOH:O	2.56	0.53
1:A:70:LYS:HE2	4:A:1289:HOH:O	2.08	0.53
1:A:365:SER:OG	1:A:368:GLU:CG	2.45	0.53
1:A:35:GLU:HG3	4:A:846:HOH:O	2.07	0.53
1:A:74:LYS:CE	4:A:1282:HOH:O	2.42	0.53
1:A:414:ASP:CG	4:A:1291:HOH:O	2.47	0.52
1:A:367:LYS:NZ	4:A:1166:HOH:O	2.41	0.52
1:A:312:HIS:NE2	4:A:1184:HOH:O	2.34	0.52
1:A:350:GLY:HA3	2:A:505:NAG:H82	1.92	0.52
1:A:367:LYS:HD2	4:A:1001:HOH:O	2.10	0.52
1:A:70:LYS:CE	4:A:1289:HOH:O	2.57	0.52
1:A:388:THR:CG2	1:A:397:PRO:HB3	2.41	0.51
1:A:260:GLN:HG2	4:A:787:HOH:O	2.09	0.51
1:A:367:LYS:CG	4:A:1295:HOH:O	2.60	0.50
1:A:312:HIS:HB3	4:A:825:HOH:O	2.10	0.50
1:A:260:GLN:OE1	4:A:1157:HOH:O	2.20	0.50
1:A:360:ARG:HD3	4:A:1272:HOH:O	2.06	0.50
1:A:312:HIS:CD2	4:A:1184:HOH:O	2.65	0.49
1:A:70:LYS:NZ	1:A:70:LYS:HB3	2.28	0.48
1:A:443:PHE:O	4:A:1232:HOH:O	2.20	0.48
1:A:94:LYS:HD2	4:A:1305:HOH:O	2.07	0.48
1:A:46:LYS:CG	4:A:1078:HOH:O	2.62	0.47
1:A:70:LYS:HD3	4:A:1289:HOH:O	2.14	0.47
1:A:414:ASP:HB2	4:A:1291:HOH:O	2.13	0.47
1:A:38:LEU:HD21	1:A:367:LYS:HA	1.98	0.46
1:A:398:LEU:HD23	1:A:422:LYS:HA	1.97	0.46
1:A:87:LYS:HE2	4:A:1175:HOH:O	2.16	0.45
1:A:62:ARG:HD3	1:A:142:ARG:CD	2.47	0.45
1:A:199:GLN:O	1:A:203:GLU:HG3	2.17	0.45
1:A:312:HIS:O	1:A:312:HIS:CD2	2.70	0.45
1:A:194:LYS:CD	4:A:1016:HOH:O	2.60	0.44
1:A:94:LYS:HE2	1:A:94:LYS:HB3	1.50	0.44

Continued on next page...

Continued from previous page...

Atom-1	Atom-2	Interatomic distance (Å)	Clash overlap (Å)
1:A:383:ARG:H	1:A:404:ASN:ND2	2.15	0.44
1:A:94:LYS:HB3	1:A:94:LYS:NZ	2.21	0.44
1:A:306:ARG:NE	4:A:1250:HOH:O	2.20	0.44
2:A:506:NAG:C2	4:A:1274:HOH:O	2.66	0.44
1:A:319:LEU:CD1	4:A:1277:HOH:O	2.66	0.44
1:A:83:ALA:HB3	1:A:86:PHE:CZ	2.53	0.43
1:A:402:LEU:CD1	1:A:407:VAL:HG22	2.48	0.43
1:A:168:ARG:CD	4:A:1275:HOH:O	2.37	0.43
1:A:94:LYS:CB	1:A:94:LYS:NZ	2.81	0.43
1:A:365:SER:HB2	4:A:1030:HOH:O	2.17	0.43
1:A:367:LYS:CE	4:A:1001:HOH:O	2.30	0.42
1:A:367:LYS:CD	4:A:1001:HOH:O	2.61	0.42
1:A:367:LYS:HE3	4:A:1304:HOH:O	2.17	0.42
1:A:25:TRP:CZ2	1:A:241:CYS:SG	3.13	0.42
1:A:38:LEU:CD2	1:A:367:LYS:CG	2.83	0.42
1:A:222:LYS:CE	4:A:1279:HOH:O	2.63	0.41
1:A:135:ILE:HA	1:A:334:VAL:O	2.20	0.41
1:A:156:GLN:HG3	4:A:823:HOH:O	2.20	0.41
1:A:383:ARG:H	1:A:404:ASN:HD21	1.67	0.41
1:A:414:ASP:CB	4:A:1228:HOH:O	2.29	0.41
1:A:213:ALA:N	1:A:214:PRO:CD	2.83	0.41
1:A:43:LYS:NZ	4:A:1124:HOH:O	2.53	0.41
1:A:428:LYS:HD3	4:A:1254:HOH:O	2.20	0.41
1:A:367:LYS:CD	4:A:1295:HOH:O	2.69	0.41
1:A:365:SER:HG	1:A:368:GLU:HG3	1.76	0.40
1:A:417:LYS:HE3	4:A:1280:HOH:O	2.21	0.40
1:A:87:LYS:HG2	1:A:223:HIS:CD2	2.56	0.40

All (2) symmetry-related close contacts are listed below. The label for Atom-2 includes the symmetry operator and encoded unit-cell translations to be applied.

Atom-1	Atom-2	Interatomic distance (Å)	Clash overlap (Å)
4:A:992:HOH:O	4:A:1007:HOH:O[4_555]	2.16	0.04
4:A:860:HOH:O	4:A:1252:HOH:O[4_555]	2.17	0.03

5.3 Torsion angles [i](#)

5.3.1 Protein backbone [i](#)

In the following table, the Percentiles column shows the percent Ramachandran outliers of the chain as a percentile score with respect to all X-ray entries followed by that with respect to entries of similar resolution.

The Analysed column shows the number of residues for which the backbone conformation was analysed, and the total number of residues.

Mol	Chain	Analysed	Favoured	Allowed	Outliers	Percentiles
1	A	433/439 (99%)	423 (98%)	8 (2%)	2 (0%)	29 11

All (2) Ramachandran outliers are listed below:

Mol	Chain	Res	Type
1	A	331	THR
1	A	190	GLY

5.3.2 Protein sidechains [i](#)

In the following table, the Percentiles column shows the percent sidechain outliers of the chain as a percentile score with respect to all X-ray entries followed by that with respect to entries of similar resolution.

The Analysed column shows the number of residues for which the sidechain conformation was analysed, and the total number of residues.

Mol	Chain	Analysed	Rotameric	Outliers	Percentiles
1	A	366/370 (99%)	352 (96%)	14 (4%)	33 8

All (14) residues with a non-rotameric sidechain are listed below:

Mol	Chain	Res	Type
1	A	35	GLU
1	A	38	LEU
1	A	70	LYS
1	A	87	LYS
1	A	94	LYS
1	A	99	THR
1	A	159	LEU
1	A	241	CYS
1	A	255	LEU

Continued on next page...

Continued from previous page...

Mol	Chain	Res	Type
1	A	265	ASN
1	A	329	ASN
1	A	331	THR
1	A	383	ARG
1	A	438	ASN

Some sidechains can be flipped to improve hydrogen bonding and reduce clashes. All (7) such sidechains are listed below:

Mol	Chain	Res	Type
1	A	122	GLN
1	A	260	GLN
1	A	264	HIS
1	A	312	HIS
1	A	329	ASN
1	A	404	ASN
1	A	438	ASN

5.3.3 RNA [i](#)

There are no RNA molecules in this entry.

5.4 Non-standard residues in protein, DNA, RNA chains [i](#)

There are no non-standard protein/DNA/RNA residues in this entry.

5.5 Carbohydrates [i](#)

There are no monosaccharides in this entry.

5.6 Ligand geometry [i](#)

5 ligands are modelled in this entry.

In the following table, the Counts columns list the number of bonds (or angles) for which Mogul statistics could be retrieved, the number of bonds (or angles) that are observed in the model and the number of bonds (or angles) that are defined in the Chemical Component Dictionary. The Link column lists molecule types, if any, to which the group is linked. The Z score for a bond length (or angle) is the number of standard deviations the observed value is removed from the expected value. A bond length (or angle) with $|Z| > 2$ is considered an outlier worth inspection. RMSZ is the root-mean-square of all Z scores of the bond lengths (or angles).

Mol	Type	Chain	Res	Link	Bond lengths			Bond angles		
					Counts	RMSZ	# Z > 2	Counts	RMSZ	# Z > 2
2	NAG	A	505	1	14,14,15	1.20	2 (14%)	17,19,21	1.76	4 (23%)
2	NAG	A	506	1	14,14,15	1.42	3 (21%)	17,19,21	3.24	10 (58%)
2	NAG	A	503	1	14,14,15	1.80	5 (35%)	17,19,21	3.00	7 (41%)
2	NAG	A	504	1	14,14,15	1.85	3 (21%)	17,19,21	1.61	4 (23%)
3	PO4	A	701	-	4,4,4	2.77	1 (25%)	6,6,6	1.50	1 (16%)

In the following table, the Chirals column lists the number of chiral outliers, the number of chiral centers analysed, the number of these observed in the model and the number defined in the Chemical Component Dictionary. Similar counts are reported in the Torsion and Rings columns. '-' means no outliers of that kind were identified.

Mol	Type	Chain	Res	Link	Chirals	Torsions	Rings
2	NAG	A	505	1	-	0/6/23/26	0/1/1/1
2	NAG	A	506	1	-	1/6/23/26	0/1/1/1
2	NAG	A	503	1	-	0/6/23/26	0/1/1/1
2	NAG	A	504	1	-	0/6/23/26	0/1/1/1

All (14) bond length outliers are listed below:

Mol	Chain	Res	Type	Atoms	Z	Observed(Å)	Ideal(Å)
3	A	701	PO4	P-O1	5.51	1.63	1.50
2	A	504	NAG	C1-C2	3.74	1.57	1.52
2	A	504	NAG	O5-C1	-3.67	1.37	1.43
2	A	503	NAG	C3-C2	3.36	1.59	1.52
2	A	504	NAG	C2-N2	-3.04	1.41	1.46
2	A	506	NAG	C1-C2	2.69	1.56	1.52
2	A	503	NAG	O6-C6	-2.67	1.31	1.42
2	A	503	NAG	O5-C5	2.64	1.48	1.43
2	A	505	NAG	C1-C2	2.61	1.56	1.52
2	A	503	NAG	C6-C5	2.60	1.60	1.51
2	A	506	NAG	C4-C5	2.58	1.58	1.53
2	A	506	NAG	O5-C5	2.46	1.48	1.43
2	A	503	NAG	O7-C7	2.26	1.28	1.23
2	A	505	NAG	O5-C1	2.20	1.47	1.43

All (26) bond angle outliers are listed below:

Mol	Chain	Res	Type	Atoms	Z	Observed(°)	Ideal(°)
2	A	506	NAG	C1-O5-C5	8.22	123.33	112.19
2	A	503	NAG	C1-O5-C5	6.73	121.31	112.19
2	A	506	NAG	C2-N2-C7	-5.77	114.69	122.90

Continued on next page...

Continued from previous page...

Mol	Chain	Res	Type	Atoms	Z	Observed(°)	Ideal(°)
2	A	503	NAG	C2-N2-C7	-5.39	115.23	122.90
2	A	506	NAG	C4-C3-C2	-4.78	104.01	111.02
2	A	503	NAG	O6-C6-C5	-4.70	95.18	111.29
2	A	503	NAG	C6-C5-C4	-4.30	102.94	113.00
2	A	504	NAG	O5-C1-C2	-3.72	105.42	111.29
2	A	503	NAG	O4-C4-C5	-3.29	101.13	109.30
2	A	505	NAG	O5-C1-C2	-3.23	106.18	111.29
2	A	506	NAG	O5-C5-C6	3.18	112.19	107.20
2	A	506	NAG	O4-C4-C5	3.16	117.15	109.30
2	A	505	NAG	C4-C3-C2	3.10	115.56	111.02
3	A	701	PO4	O4-P-O1	-2.93	100.18	110.89
2	A	506	NAG	C1-C2-N2	2.90	115.44	110.49
2	A	505	NAG	C3-C4-C5	-2.82	105.20	110.24
2	A	506	NAG	O5-C5-C4	2.82	117.69	110.83
2	A	504	NAG	C1-O5-C5	-2.66	108.59	112.19
2	A	506	NAG	O7-C7-C8	-2.51	117.40	122.06
2	A	505	NAG	O6-C6-C5	-2.48	102.77	111.29
2	A	506	NAG	C8-C7-N2	2.39	120.14	116.10
2	A	504	NAG	O4-C4-C3	-2.37	104.88	110.35
2	A	503	NAG	O7-C7-C8	-2.29	117.81	122.06
2	A	503	NAG	O5-C1-C2	-2.25	107.73	111.29
2	A	506	NAG	O3-C3-C2	2.17	113.97	109.47
2	A	504	NAG	O3-C3-C2	-2.04	105.25	109.47

There are no chirality outliers.

All (1) torsion outliers are listed below:

Mol	Chain	Res	Type	Atoms
2	A	506	NAG	O5-C5-C6-O6

There are no ring outliers.

2 monomers are involved in 7 short contacts:

Mol	Chain	Res	Type	Clashes	Symm-Clashes
2	A	505	NAG	1	0
2	A	506	NAG	6	0

5.7 Other polymers

There are no such residues in this entry.

5.8 Polymer linkage issues

There are no chain breaks in this entry.

6 Fit of model and data [i](#)

6.1 Protein, DNA and RNA chains [i](#)

In the following table, the column labelled '#RSRZ> 2' contains the number (and percentage) of RSRZ outliers, followed by percent RSRZ outliers for the chain as percentile scores relative to all X-ray entries and entries of similar resolution. The OWAB column contains the minimum, median, 95th percentile and maximum values of the occupancy-weighted average B-factor per residue. The column labelled 'Q< 0.9' lists the number of (and percentage) of residues with an average occupancy less than 0.9.

Mol	Chain	Analysed	<RSRZ>	#RSRZ>2	OWAB(Å ²)	Q<0.9
1	A	435/439 (99%)	-0.25	6 (1%) 75 76	13, 20, 37, 48	0

All (6) RSRZ outliers are listed below:

Mol	Chain	Res	Type	RSRZ
1	A	46	LYS	3.1
1	A	88	GLY	3.0
1	A	87	LYS	2.6
1	A	56	LEU	2.4
1	A	86	PHE	2.3
1	A	95	THR	2.0

6.2 Non-standard residues in protein, DNA, RNA chains [i](#)

There are no non-standard protein/DNA/RNA residues in this entry.

6.3 Carbohydrates [i](#)

There are no monosaccharides in this entry.

6.4 Ligands [i](#)

In the following table, the Atoms column lists the number of modelled atoms in the group and the number defined in the chemical component dictionary. The B-factors column lists the minimum, median, 95th percentile and maximum values of B factors of atoms in the group. The column labelled 'Q< 0.9' lists the number of atoms with occupancy less than 0.9.

Mol	Type	Chain	Res	Atoms	RSCC	RSR	B-factors(Å ²)	Q<0.9
2	NAG	A	506	14/15	0.49	0.33	53,62,69,70	0

Continued on next page...

Continued from previous page...

Mol	Type	Chain	Res	Atoms	RSCC	RSR	B-factors(\AA^2)	Q<0.9
2	NAG	A	503	14/15	0.94	0.07	18,22,26,29	0
2	NAG	A	504	14/15	0.95	0.08	15,23,28,32	0
2	NAG	A	505	14/15	0.97	0.05	14,17,25,30	0
3	PO4	A	701	5/5	0.98	0.06	18,19,21,22	0

6.5 Other polymers [i](#)

There are no such residues in this entry.