



Full wwPDB X-ray Structure Validation Report ⓘ

May 25, 2020 – 09:20 am BST

PDB ID : 1RTW
Title : X-ray Structure of PF1337, a TenA Homologue from *Pyrococcus furiosus*.
Northeast Structural Genomics Research Consortium (Nesg) Target PFR34
Authors : Benach, J.; Edstrom, W.C.; Lee, I.; Rong, X.; Acton, T.B.; Montelione, G.T.;
Hunt, J.F.; Northeast Structural Genomics Consortium (NESG)
Deposited on : 2003-12-10
Resolution : 2.35 Å(reported)

This is a Full wwPDB X-ray Structure Validation Report for a publicly released PDB entry.

We welcome your comments at validation@mail.wwpdb.org

A user guide is available at

<https://www.wwpdb.org/validation/2017/XrayValidationReportHelp>

with specific help available everywhere you see the ⓘ symbol.

The following versions of software and data (see [references ⓘ](#)) were used in the production of this report:

MolProbity : 4.02b-467
Mogul : 1.8.5 (274361), CSD as541be (2020)
Xtriage (Phenix) : 1.13
EDS : 2.11
Percentile statistics : 20191225.v01 (using entries in the PDB archive December 25th 2019)
Refmac : 5.8.0158
CCP4 : 7.0.044 (Gargrove)
Ideal geometry (proteins) : Engh & Huber (2001)
Ideal geometry (DNA, RNA) : Parkinson et al. (1996)
Validation Pipeline (wwPDB-VP) : 2.11

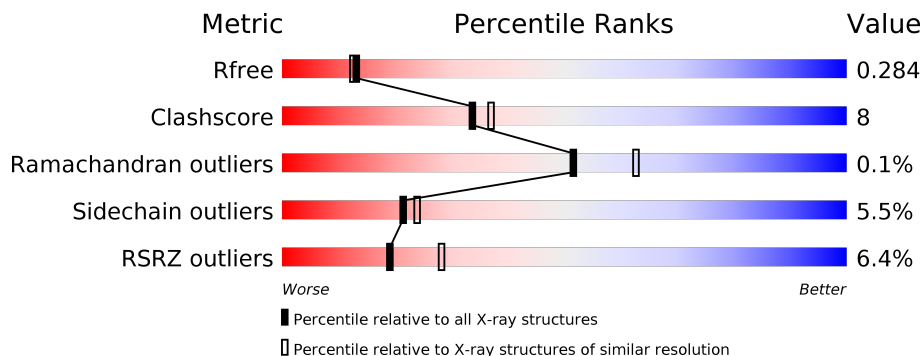
1 Overall quality at a glance

The following experimental techniques were used to determine the structure:

X-RAY DIFFRACTION

The reported resolution of this entry is 2.35 Å.

Percentile scores (ranging between 0-100) for global validation metrics of the entry are shown in the following graphic. The table shows the number of entries on which the scores are based.



Metric	Whole archive (#Entries)	Similar resolution (#Entries, resolution range(Å))
R_{free}	130704	1164 (2.36-2.36)
Clashscore	141614	1232 (2.36-2.36)
Ramachandran outliers	138981	1211 (2.36-2.36)
Sidechain outliers	138945	1212 (2.36-2.36)
RSRZ outliers	127900	1150 (2.36-2.36)

The table below summarises the geometric issues observed across the polymeric chains and their fit to the electron density. The red, orange, yellow and green segments on the lower bar indicate the fraction of residues that contain outliers for ≥ 3 , 2, 1 and 0 types of geometric quality criteria respectively. A grey segment represents the fraction of residues that are not modelled. The numeric value for each fraction is indicated below the corresponding segment, with a dot representing fractions $\leq 5\%$. The upper red bar (where present) indicates the fraction of residues that have poor fit to the electron density. The numeric value is given above the bar.

Mol	Chain	Length	Quality of chain
1	A	220	 3% 72% 21% 6%
1	B	220	 4% 74% 19% • 5%
1	C	220	 % 74% 19% • 5%
1	D	220	 16% 72% 20% • 6%

The following table lists non-polymeric compounds, carbohydrate monomers and non-standard residues in protein, DNA, RNA chains that are outliers for geometric or electron-density-fit crite-

ria:

Mol	Type	Chain	Res	Chirality	Geometry	Clashes	Electron density
3	PO4	B	2214	-	X	-	-
3	PO4	C	3214	-	X	-	-
3	PO4	D	4214	-	X	-	-

2 Entry composition [i](#)

There are 4 unique types of molecules in this entry. The entry contains 7348 atoms, of which 0 are hydrogens and 0 are deuteriums.

In the tables below, the ZeroOcc column contains the number of atoms modelled with zero occupancy, the AltConf column contains the number of residues with at least one atom in alternate conformation and the Trace column contains the number of residues modelled with at most 2 atoms.

- Molecule 1 is a protein called transcriptional activator, putative.

Mol	Chain	Residues	Atoms						ZeroOcc	AltConf	Trace
			Total	C	N	O	S	Se			
1	A	206	1765	1160	280	319	1	5	0	0	0
1	B	209	1782	1169	283	324	1	5	0	0	0
1	C	208	1773	1164	282	321	1	5	0	0	0
1	D	206	1765	1160	280	319	1	5	0	0	0

There are 52 discrepancies between the modelled and reference sequences:

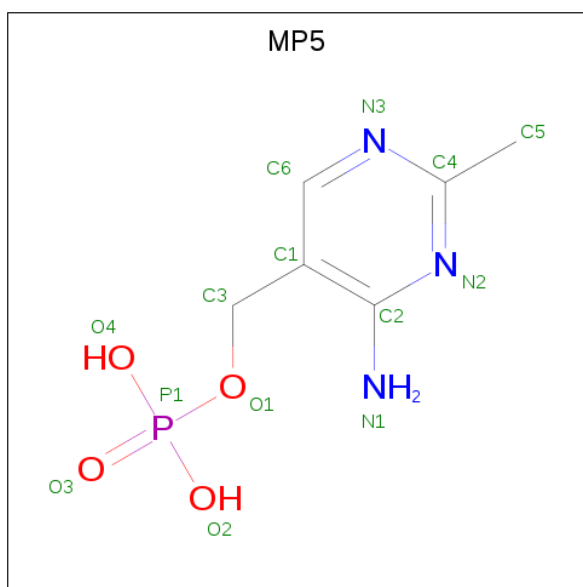
Chain	Residue	Modelled	Actual	Comment	Reference
A	1	MSE	MET	MODIFIED RESIDUE	UNP Q8U189
A	26	MSE	MET	MODIFIED RESIDUE	UNP Q8U189
A	54	MSE	MET	MODIFIED RESIDUE	UNP Q8U189
A	58	MSE	MET	MODIFIED RESIDUE	UNP Q8U189
A	82	MSE	MET	MODIFIED RESIDUE	UNP Q8U189
A	213	LEU	-	CLONING ARTIFACT	UNP Q8U189
A	214	GLU	-	CLONING ARTIFACT	UNP Q8U189
A	215	HIS	-	EXPRESSION TAG	UNP Q8U189
A	216	HIS	-	EXPRESSION TAG	UNP Q8U189
A	217	HIS	-	EXPRESSION TAG	UNP Q8U189
A	218	HIS	-	EXPRESSION TAG	UNP Q8U189
A	219	HIS	-	EXPRESSION TAG	UNP Q8U189
A	220	HIS	-	EXPRESSION TAG	UNP Q8U189
B	1	MSE	MET	MODIFIED RESIDUE	UNP Q8U189
B	26	MSE	MET	MODIFIED RESIDUE	UNP Q8U189
B	54	MSE	MET	MODIFIED RESIDUE	UNP Q8U189
B	58	MSE	MET	MODIFIED RESIDUE	UNP Q8U189
B	82	MSE	MET	MODIFIED RESIDUE	UNP Q8U189
B	213	LEU	-	CLONING ARTIFACT	UNP Q8U189
B	214	GLU	-	CLONING ARTIFACT	UNP Q8U189
B	215	HIS	-	EXPRESSION TAG	UNP Q8U189

Continued on next page...

Continued from previous page...

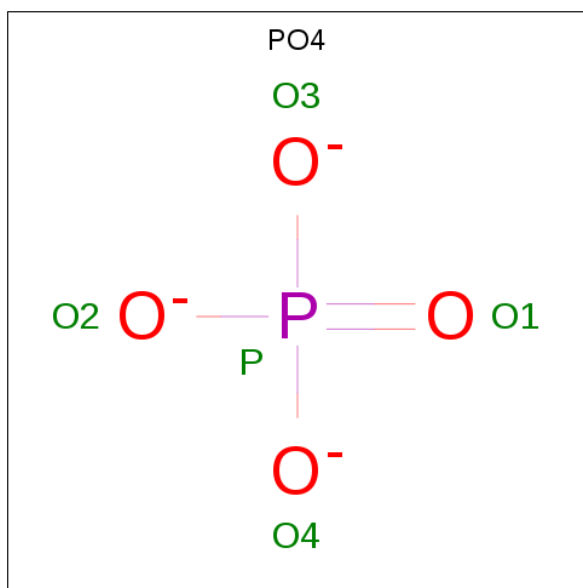
Chain	Residue	Modelled	Actual	Comment	Reference
B	216	HIS	-	EXPRESSION TAG	UNP Q8U189
B	217	HIS	-	EXPRESSION TAG	UNP Q8U189
B	218	HIS	-	EXPRESSION TAG	UNP Q8U189
B	219	HIS	-	EXPRESSION TAG	UNP Q8U189
B	220	HIS	-	EXPRESSION TAG	UNP Q8U189
C	1	MSE	MET	MODIFIED RESIDUE	UNP Q8U189
C	26	MSE	MET	MODIFIED RESIDUE	UNP Q8U189
C	54	MSE	MET	MODIFIED RESIDUE	UNP Q8U189
C	58	MSE	MET	MODIFIED RESIDUE	UNP Q8U189
C	82	MSE	MET	MODIFIED RESIDUE	UNP Q8U189
C	213	LEU	-	CLONING ARTIFACT	UNP Q8U189
C	214	GLU	-	CLONING ARTIFACT	UNP Q8U189
C	215	HIS	-	EXPRESSION TAG	UNP Q8U189
C	216	HIS	-	EXPRESSION TAG	UNP Q8U189
C	217	HIS	-	EXPRESSION TAG	UNP Q8U189
C	218	HIS	-	EXPRESSION TAG	UNP Q8U189
C	219	HIS	-	EXPRESSION TAG	UNP Q8U189
C	220	HIS	-	EXPRESSION TAG	UNP Q8U189
D	1	MSE	MET	MODIFIED RESIDUE	UNP Q8U189
D	26	MSE	MET	MODIFIED RESIDUE	UNP Q8U189
D	54	MSE	MET	MODIFIED RESIDUE	UNP Q8U189
D	58	MSE	MET	MODIFIED RESIDUE	UNP Q8U189
D	82	MSE	MET	MODIFIED RESIDUE	UNP Q8U189
D	213	LEU	-	CLONING ARTIFACT	UNP Q8U189
D	214	GLU	-	CLONING ARTIFACT	UNP Q8U189
D	215	HIS	-	EXPRESSION TAG	UNP Q8U189
D	216	HIS	-	EXPRESSION TAG	UNP Q8U189
D	217	HIS	-	EXPRESSION TAG	UNP Q8U189
D	218	HIS	-	EXPRESSION TAG	UNP Q8U189
D	219	HIS	-	EXPRESSION TAG	UNP Q8U189
D	220	HIS	-	EXPRESSION TAG	UNP Q8U189

- Molecule 2 is (4-AMINO-2-METHYLPYRIMIDIN-5-YL)METHYL DIHYDROGEN PHOSPHATE (three-letter code: MP5) (formula: C₆H₁₀N₃O₄P).



Mol	Chain	Residues	Atoms					ZeroOcc	AltConf
			Total	C	N	O	P		
2	A	1	14	6	3	4	1	0	0

- Molecule 3 is PHOSPHATE ION (three-letter code: PO4) (formula: O₄P).



Mol	Chain	Residues	Atoms			ZeroOcc	AltConf
			Total	O	P		
3	B	1	5	4	1	0	0
3	C	1	5	4	1	0	0
3	D	1	5	4	1	0	0

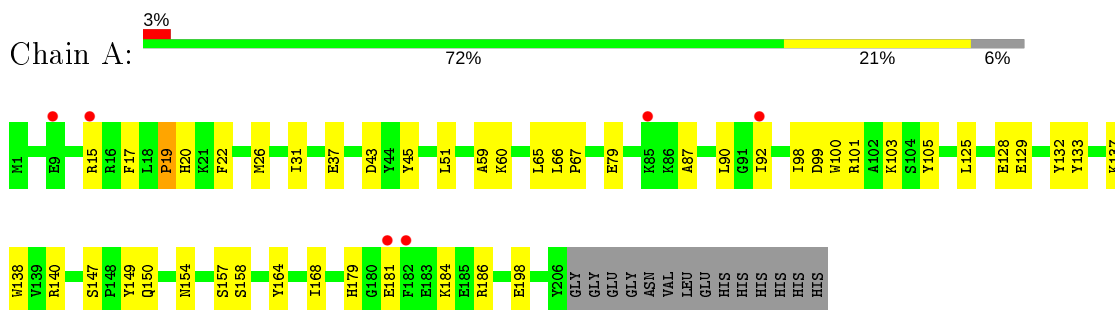
- Molecule 4 is water.

Mol	Chain	Residues	Atoms	ZeroOcc	AltConf
4	A	62	Total O 62 62	0	0
4	B	53	Total O 53 53	0	0
4	C	79	Total O 79 79	0	0
4	D	40	Total O 40 40	0	0

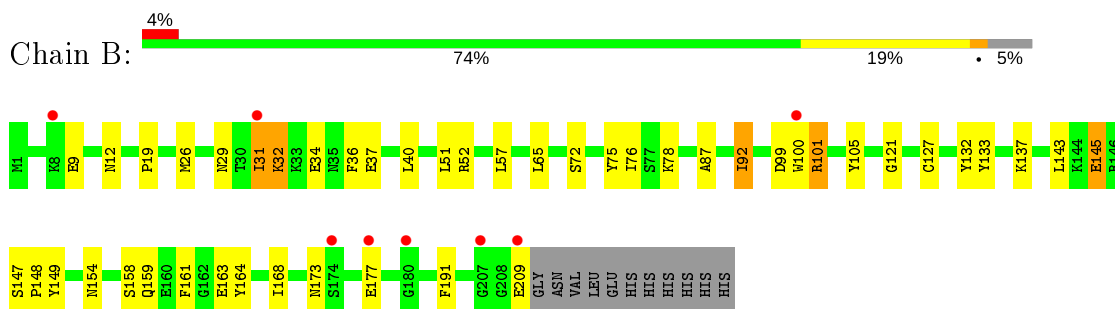
3 Residue-property plots [i](#)

These plots are drawn for all protein, RNA and DNA chains in the entry. The first graphic for a chain summarises the proportions of the various outlier classes displayed in the second graphic. The second graphic shows the sequence view annotated by issues in geometry and electron density. Residues are color-coded according to the number of geometric quality criteria for which they contain at least one outlier: green = 0, yellow = 1, orange = 2 and red = 3 or more. A red dot above a residue indicates a poor fit to the electron density ($RSRZ > 2$). Stretches of 2 or more consecutive residues without any outlier are shown as a green connector. Residues present in the sample, but not in the model, are shown in grey.

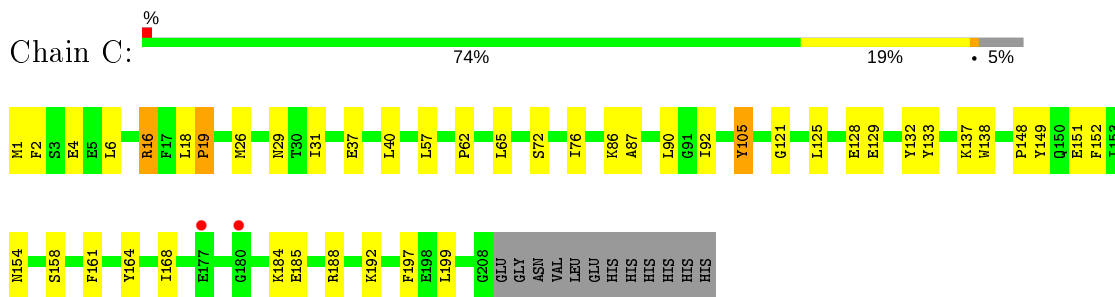
- Molecule 1: transcriptional activator, putative



- Molecule 1: transcriptional activator, putative

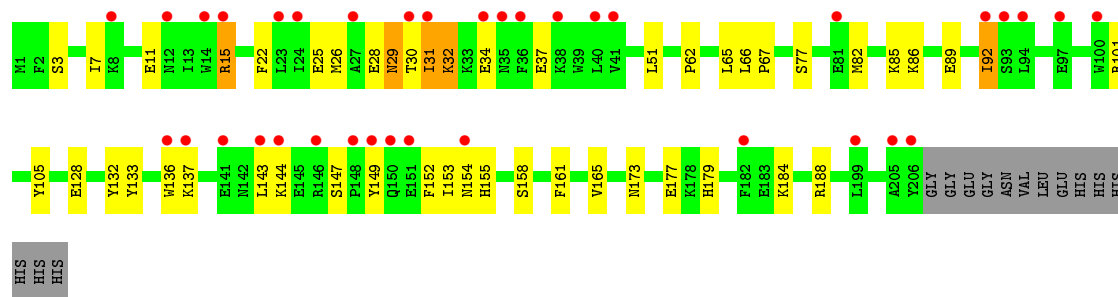


- Molecule 1: transcriptional activator, putative



- Molecule 1: transcriptional activator, putative





4 Data and refinement statistics

Property	Value	Source
Space group	P 21 21 2	Depositor
Cell constants a, b, c, α , β , γ	101.80Å 123.65Å 77.47Å 90.00° 90.00° 90.00°	Depositor
Resolution (Å)	20.00 – 2.35 36.20 – 2.35	Depositor EDS
% Data completeness (in resolution range)	(Not available) (20.00-2.35) 93.9 (36.20-2.35)	Depositor EDS
R_{merge}	0.07	Depositor
R_{sym}	(Not available)	Depositor
$\langle I/\sigma(I) \rangle$ ¹	4.92 (at 2.34Å)	Xtrriage
Refinement program	CNS	Depositor
R, R_{free}	0.240 , 0.281 0.246 , 0.284	Depositor DCC
R_{free} test set	2003 reflections (5.00%)	wwPDB-VP
Wilson B-factor (Å ²)	26.1	Xtrriage
Anisotropy	0.312	Xtrriage
Bulk solvent k_{sol} (e/Å ³), B_{sol} (Å ²)	0.34 , 44.3	EDS
L-test for twinning ²	$\langle L \rangle = 0.49$, $\langle L^2 \rangle = 0.32$	Xtrriage
Estimated twinning fraction	No twinning to report.	Xtrriage
F_o, F_c correlation	0.93	EDS
Total number of atoms	7348	wwPDB-VP
Average B, all atoms (Å ²)	32.0	wwPDB-VP

Xtrriage's analysis on translational NCS is as follows: *The analyses of the Patterson function reveals a significant off-origin peak that is 49.21 % of the origin peak, indicating pseudo-translational symmetry. The chance of finding a peak of this or larger height randomly in a structure without pseudo-translational symmetry is equal to $7.7024e-05$. The detected translational NCS is most likely also responsible for the elevated intensity ratio.*

¹Intensities estimated from amplitudes.

²Theoretical values of $\langle |L| \rangle$, $\langle L^2 \rangle$ for acentric reflections are 0.5, 0.333 respectively for untwinned datasets, and 0.375, 0.2 for perfectly twinned datasets.

5 Model quality [i](#)

5.1 Standard geometry [i](#)

Bond lengths and bond angles in the following residue types are not validated in this section: PO4, MP5

The Z score for a bond length (or angle) is the number of standard deviations the observed value is removed from the expected value. A bond length (or angle) with $|Z| > 5$ is considered an outlier worth inspection. RMSZ is the root-mean-square of all Z scores of the bond lengths (or angles).

Mol	Chain	Bond lengths		Bond angles	
		RMSZ	# Z >5	RMSZ	# Z >5
1	A	0.43	0/1810	0.58	0/2428
1	B	0.40	0/1827	0.54	0/2450
1	C	0.42	0/1818	0.55	0/2438
1	D	0.39	0/1810	0.56	0/2428
All	All	0.41	0/7265	0.56	0/9744

There are no bond length outliers.

There are no bond angle outliers.

There are no chirality outliers.

There are no planarity outliers.

5.2 Too-close contacts [i](#)

In the following table, the Non-H and H(model) columns list the number of non-hydrogen atoms and hydrogen atoms in the chain respectively. The H(added) column lists the number of hydrogen atoms added and optimized by MolProbity. The Clashes column lists the number of clashes within the asymmetric unit, whereas Symm-Clashes lists symmetry related clashes.

Mol	Chain	Non-H	H(model)	H(added)	Clashes	Symm-Clashes
1	A	1765	0	1723	28	0
1	B	1782	0	1735	26	0
1	C	1773	0	1729	29	0
1	D	1765	0	1723	37	0
2	A	14	0	8	3	0
3	B	5	0	0	0	0
3	C	5	0	0	0	0
3	D	5	0	0	0	0
4	A	62	0	0	2	0

Continued on next page...

Continued from previous page...

Mol	Chain	Non-H	H(model)	H(added)	Clashes	Symm-Clashes
4	B	53	0	0	2	0
4	C	79	0	0	2	0
4	D	40	0	0	0	0
All	All	7348	0	6918	119	0

The all-atom clashscore is defined as the number of clashes found per 1000 atoms (including hydrogen atoms). The all-atom clashscore for this structure is 8.

All (119) close contacts within the same asymmetric unit are listed below, sorted by their clash magnitude.

Atom-1	Atom-2	Interatomic distance (Å)	Clash overlap (Å)
1:C:76:ILE:HD12	4:C:3124:HOH:O	1.71	0.90
1:B:76:ILE:HD12	4:B:3115:HOH:O	1.79	0.82
1:B:29:ASN:HD21	1:B:148:PRO:HD3	1.47	0.79
1:D:136:TRP:HZ3	1:D:153:ILE:HG12	1.46	0.78
1:D:136:TRP:CZ3	1:D:153:ILE:HG12	2.25	0.71
1:D:133:TYR:CZ	1:D:137:LYS:HE3	2.26	0.71
1:D:31:ILE:HD12	1:D:32:LYS:N	2.07	0.70
1:D:82:MSE:HE1	1:D:155:HIS:HB2	1.75	0.68
1:A:37:GLU:HG3	1:A:92:ILE:HD12	1.78	0.66
1:B:161:PHE:HE1	4:B:3115:HOH:O	1.78	0.66
1:D:25:GLU:HB3	1:D:31:ILE:HB	1.78	0.66
1:C:72:SER:O	1:C:76:ILE:HG12	1.95	0.65
1:D:29:ASN:HD22	1:D:29:ASN:C	1.99	0.64
1:D:32:LYS:NZ	1:D:32:LYS:HB3	2.13	0.63
1:D:147:SER:C	1:D:149:TYR:H	2.04	0.61
1:B:143:LEU:HG	1:B:145:GLU:O	2.00	0.61
1:A:45:TYR:CD2	1:A:98:ILE:HD13	2.36	0.60
1:A:99:ASP:OD2	1:A:101:ARG:HD3	2.00	0.60
1:C:37:GLU:HG3	1:C:92:ILE:CD1	2.32	0.59
1:B:40:LEU:HD23	1:B:92:ILE:HD12	1.85	0.59
1:D:25:GLU:OE1	1:D:31:ILE:HD13	2.03	0.59
1:D:34:GLU:H	1:D:34:GLU:CD	2.07	0.58
1:B:57:LEU:HD21	1:B:121:GLY:HA3	1.87	0.57
1:C:57:LEU:HD21	1:C:121:GLY:HA3	1.86	0.57
1:C:184:LYS:O	1:C:188:ARG:HG3	2.05	0.57
1:C:37:GLU:HG3	1:C:92:ILE:HD11	1.87	0.57
1:B:72:SER:O	1:B:76:ILE:HG12	2.04	0.56
1:C:16:ARG:HB3	1:C:199:LEU:HD13	1.87	0.56
1:C:86:LYS:HG2	1:C:152:PHE:HE2	1.69	0.56
1:D:3:SER:O	1:D:7:ILE:HG12	2.05	0.56

Continued on next page...

Continued from previous page...

Atom-1	Atom-2	Interatomic distance (Å)	Clash overlap (Å)
1:C:29:ASN:HD21	1:C:148:PRO:HD3	1.70	0.55
1:A:164:TYR:CZ	1:A:168:ILE:HD11	2.42	0.55
1:C:161:PHE:HE1	4:C:3124:HOH:O	1.89	0.55
1:B:26:MSE:HE1	1:B:149:TYR:HB2	1.88	0.54
1:A:133:TYR:O	1:A:137:LYS:HB2	2.07	0.54
1:D:29:ASN:O	1:D:29:ASN:ND2	2.41	0.54
1:B:100:TRP:CE2	1:B:101:ARG:HD2	2.43	0.54
1:D:86:LYS:HG2	1:D:152:PHE:HE2	1.73	0.53
1:A:198:GLU:OE2	2:A:1213:MP5:N3	2.41	0.53
1:A:17:PHE:HA	1:A:20:HIS:HB2	1.90	0.53
1:A:100:TRP:HA	1:A:103:LYS:HE2	1.91	0.53
1:B:31:ILE:HD13	1:B:32:LYS:O	2.08	0.53
1:C:29:ASN:ND2	1:C:148:PRO:HD3	2.25	0.52
1:D:154:ASN:O	1:D:158:SER:HB3	2.09	0.52
1:B:99:ASP:OD2	1:B:101:ARG:HD3	2.09	0.52
1:A:60:LYS:HE3	4:A:3150:HOH:O	2.10	0.52
1:D:179:HIS:O	1:D:184:LYS:HE3	2.09	0.52
1:B:173:ASN:O	1:B:177:GLU:HG2	2.11	0.51
1:C:86:LYS:HG2	1:C:152:PHE:CE2	2.45	0.51
1:C:40:LEU:HD23	1:C:92:ILE:HD13	1.93	0.51
1:D:22:PHE:O	1:D:26:MSE:HG2	2.11	0.51
1:D:86:LYS:HA	1:D:89:GLU:HB2	1.93	0.50
1:A:37:GLU:HB2	4:A:3083:HOH:O	2.12	0.50
1:C:1:MSE:HG2	1:C:4:GLU:HG3	1.93	0.50
1:A:37:GLU:HG3	1:A:92:ILE:CD1	2.41	0.49
1:A:87:ALA:HA	1:A:92:ILE:HG23	1.94	0.49
1:B:133:TYR:O	1:B:137:LYS:HB2	2.12	0.49
1:C:185:GLU:OE2	1:C:188:ARG:HD2	2.13	0.48
1:D:173:ASN:O	1:D:177:GLU:HG3	2.12	0.48
1:D:184:LYS:O	1:D:188:ARG:HG3	2.14	0.48
1:A:179:HIS:O	1:A:184:LYS:HE3	2.13	0.48
1:B:31:ILE:CD1	1:B:36:PHE:HB2	2.44	0.48
1:B:37:GLU:HG3	1:B:92:ILE:HG13	1.95	0.48
1:B:31:ILE:HD12	1:B:36:PHE:HB2	1.94	0.48
1:C:26:MSE:HE1	1:C:149:TYR:HB2	1.96	0.48
1:D:31:ILE:HD12	1:D:32:LYS:H	1.79	0.48
1:C:62:PRO:HD2	1:C:65:LEU:HD12	1.95	0.48
1:B:164:TYR:CZ	1:B:168:ILE:HD11	2.49	0.47
1:D:82:MSE:HE1	1:D:155:HIS:CB	2.43	0.47
1:D:37:GLU:HG3	1:D:92:ILE:HG13	1.97	0.47
1:C:90:LEU:HB2	1:C:92:ILE:HG22	1.96	0.47

Continued on next page...

Continued from previous page...

Atom-1	Atom-2	Interatomic distance (Å)	Clash overlap (Å)
1:C:87:ALA:HA	1:C:92:ILE:CG2	2.45	0.47
1:D:25:GLU:CB	1:D:31:ILE:HB	2.43	0.46
1:A:66:LEU:HB2	1:A:67:PRO:HD3	1.98	0.46
1:D:66:LEU:HB2	1:D:67:PRO:HD3	1.98	0.46
1:A:79:GLU:OE1	2:A:1213:MP5:O3	2.34	0.46
1:C:16:ARG:HB3	1:C:199:LEU:CD1	2.45	0.46
1:A:154:ASN:O	1:A:158:SER:HB3	2.15	0.45
1:D:32:LYS:NZ	1:D:32:LYS:CB	2.76	0.45
1:C:154:ASN:O	1:C:158:SER:HB3	2.16	0.45
1:D:32:LYS:HZ1	1:D:32:LYS:HB3	1.81	0.45
1:D:28:GLU:HB2	1:D:30:THR:HG23	1.98	0.45
1:B:87:ALA:HA	1:B:92:ILE:HG23	1.97	0.45
1:D:161:PHE:O	1:D:165:VAL:HG23	2.16	0.45
1:C:164:TYR:CZ	1:C:168:ILE:HD11	2.52	0.45
1:A:26:MSE:HE1	1:A:149:TYR:HB2	1.99	0.45
1:C:133:TYR:O	1:C:137:LYS:HB2	2.17	0.45
1:C:86:LYS:HD3	1:C:151:GLU:OE2	2.17	0.44
1:A:140:ARG:HD2	1:A:157:SER:OG	2.18	0.44
1:D:147:SER:C	1:D:149:TYR:N	2.71	0.44
1:C:125:LEU:O	1:C:129:GLU:HG2	2.17	0.44
1:D:28:GLU:HA	1:D:144:LYS:HE2	2.00	0.44
1:D:85:LYS:HA	1:D:85:LYS:HD2	1.82	0.44
1:C:19:PRO:HB3	1:C:138:TRP:CD2	2.53	0.43
1:D:62:PRO:HD2	1:D:65:LEU:HD12	2.00	0.43
1:A:87:ALA:HA	1:A:92:ILE:CG2	2.48	0.43
1:A:147:SER:O	1:A:150:GLN:HB2	2.19	0.43
1:B:127:CYS:HB2	1:B:191:PHE:CD2	2.53	0.43
1:D:29:ASN:C	1:D:29:ASN:ND2	2.70	0.43
1:B:29:ASN:HD21	1:B:148:PRO:CD	2.26	0.43
1:C:87:ALA:HA	1:C:92:ILE:HG23	2.02	0.42
1:D:86:LYS:HG2	1:D:152:PHE:CE2	2.52	0.42
1:A:19:PRO:HB3	1:A:138:TRP:CE2	2.55	0.42
1:A:19:PRO:HB3	1:A:138:TRP:CD2	2.55	0.41
1:C:105:TYR:CD2	1:C:197:PHE:HB3	2.55	0.41
1:B:147:SER:HA	1:B:148:PRO:HD3	1.91	0.41
1:A:125:LEU:O	1:A:129:GLU:HG2	2.21	0.41
1:B:154:ASN:O	1:B:158:SER:HB3	2.20	0.41
1:A:164:TYR:CE1	1:A:168:ILE:HD11	2.56	0.41
1:A:59:ALA:O	1:B:52:ARG:HD3	2.21	0.41
1:D:11:GLU:O	1:D:15:ARG:HB2	2.20	0.41
1:B:159:GLN:O	1:B:163:GLU:HG3	2.20	0.41

Continued on next page...

Continued from previous page...

Atom-1	Atom-2	Interatomic distance (Å)	Clash overlap (Å)
1:C:2:PHE:O	1:C:6:LEU:HG	2.20	0.41
1:A:43:ASP:OD1	2:A:1213:MP5:N2	2.54	0.41
1:A:22:PHE:CE2	1:A:31:ILE:HD11	2.56	0.41
1:B:34:GLU:H	1:B:34:GLU:CD	2.24	0.41
1:B:75:TYR:O	1:B:78:LYS:HB2	2.20	0.40
1:D:7:ILE:H	1:D:7:ILE:HG12	1.76	0.40
1:A:90:LEU:CB	1:A:92:ILE:HG22	2.51	0.40

There are no symmetry-related clashes.

5.3 Torsion angles [i](#)

5.3.1 Protein backbone [i](#)

In the following table, the Percentiles column shows the percent Ramachandran outliers of the chain as a percentile score with respect to all X-ray entries followed by that with respect to entries of similar resolution.

The Analysed column shows the number of residues for which the backbone conformation was analysed, and the total number of residues.

Mol	Chain	Analysed	Favoured	Allowed	Outliers	Percentiles	
1	A	204/220 (93%)	200 (98%)	3 (2%)	1 (0%)	29	32
1	B	207/220 (94%)	207 (100%)	0	0	100	100
1	C	206/220 (94%)	205 (100%)	1 (0%)	0	100	100
1	D	204/220 (93%)	196 (96%)	8 (4%)	0	100	100
All	All	821/880 (93%)	808 (98%)	12 (2%)	1 (0%)	51	63

All (1) Ramachandran outliers are listed below:

Mol	Chain	Res	Type
1	A	181	GLU

5.3.2 Protein sidechains [i](#)

In the following table, the Percentiles column shows the percent sidechain outliers of the chain as a percentile score with respect to all X-ray entries followed by that with respect to entries of similar resolution.

The Analysed column shows the number of residues for which the sidechain conformation was analysed, and the total number of residues.

Mol	Chain	Analysed	Rotameric	Outliers	Percentiles	
1	A	185/191 (97%)	177 (96%)	8 (4%)	29	35
1	B	186/191 (97%)	173 (93%)	13 (7%)	15	15
1	C	185/191 (97%)	177 (96%)	8 (4%)	29	35
1	D	185/191 (97%)	173 (94%)	12 (6%)	17	18
All	All	741/764 (97%)	700 (94%)	41 (6%)	21	24

All (41) residues with a non-rotameric sidechain are listed below:

Mol	Chain	Res	Type
1	A	15	ARG
1	A	19	PRO
1	A	51	LEU
1	A	65	LEU
1	A	105	TYR
1	A	128	GLU
1	A	132	TYR
1	A	186	ARG
1	B	9	GLU
1	B	12	ASN
1	B	19	PRO
1	B	31	ILE
1	B	32	LYS
1	B	51	LEU
1	B	65	LEU
1	B	92	ILE
1	B	101	ARG
1	B	105	TYR
1	B	132	TYR
1	B	145	GLU
1	B	209	GLU
1	C	16	ARG
1	C	18	LEU
1	C	19	PRO
1	C	31	ILE
1	C	105	TYR
1	C	128	GLU
1	C	132	TYR
1	C	192	LYS
1	D	15	ARG

Continued on next page...

Continued from previous page...

Mol	Chain	Res	Type
1	D	29	ASN
1	D	31	ILE
1	D	32	LYS
1	D	51	LEU
1	D	77	SER
1	D	92	ILE
1	D	101	ARG
1	D	105	TYR
1	D	128	GLU
1	D	132	TYR
1	D	143	LEU

Some sidechains can be flipped to improve hydrogen bonding and reduce clashes. All (11) such sidechains are listed below:

Mol	Chain	Res	Type
1	A	29	ASN
1	A	155	HIS
1	B	29	ASN
1	B	155	HIS
1	C	29	ASN
1	C	35	ASN
1	C	95	ASN
1	C	155	HIS
1	D	29	ASN
1	D	35	ASN
1	D	155	HIS

5.3.3 RNA [i](#)

There are no RNA molecules in this entry.

5.4 Non-standard residues in protein, DNA, RNA chains [i](#)

There are no non-standard protein/DNA/RNA residues in this entry.

5.5 Carbohydrates [i](#)

There are no carbohydrates in this entry.

5.6 Ligand geometry i

4 ligands are modelled in this entry.

In the following table, the Counts columns list the number of bonds (or angles) for which Mogul statistics could be retrieved, the number of bonds (or angles) that are observed in the model and the number of bonds (or angles) that are defined in the Chemical Component Dictionary. The Link column lists molecule types, if any, to which the group is linked. The Z score for a bond length (or angle) is the number of standard deviations the observed value is removed from the expected value. A bond length (or angle) with $|Z| > 2$ is considered an outlier worth inspection. RMSZ is the root-mean-square of all Z scores of the bond lengths (or angles).

Mol	Type	Chain	Res	Link	Bond lengths			Bond angles		
					Counts	RMSZ	# Z > 2	Counts	RMSZ	# Z > 2
3	PO4	D	4214	-	4,4,4	2.58	2 (50%)	6,6,6	2.84	4 (66%)
2	MP5	A	1213	-	14,14,14	2.53	6 (42%)	19,20,20	1.95	6 (31%)
3	PO4	B	2214	-	4,4,4	2.86	3 (75%)	6,6,6	2.59	4 (66%)
3	PO4	C	3214	-	4,4,4	2.79	4 (100%)	6,6,6	2.68	4 (66%)

In the following table, the Chirals column lists the number of chiral outliers, the number of chiral centers analysed, the number of these observed in the model and the number defined in the Chemical Component Dictionary. Similar counts are reported in the Torsion and Rings columns. '-' means no outliers of that kind were identified.

Mol	Type	Chain	Res	Link	Chirals	Torsions	Rings
2	MP5	A	1213	-	-	4/6/6/6	0/1/1/1

All (15) bond length outliers are listed below:

Mol	Chain	Res	Type	Atoms	Z	Observed(Å)	Ideal(Å)
2	A	1213	MP5	C4-N3	5.00	1.42	1.34
2	A	1213	MP5	C2-N2	3.95	1.40	1.35
3	D	4214	PO4	P-O1	3.90	1.60	1.50
3	B	2214	PO4	P-O1	3.66	1.59	1.50
2	A	1213	MP5	P1-O4	-3.53	1.41	1.54
3	C	3214	PO4	P-O1	3.48	1.59	1.50
2	A	1213	MP5	P1-O3	3.39	1.61	1.50
3	B	2214	PO4	P-O2	3.21	1.64	1.54
3	C	3214	PO4	P-O2	3.19	1.64	1.54
3	D	4214	PO4	P-O2	2.62	1.62	1.54
2	A	1213	MP5	C6-N3	2.48	1.39	1.34
3	B	2214	PO4	P-O4	-2.29	1.47	1.54
3	C	3214	PO4	P-O4	-2.13	1.48	1.54
3	C	3214	PO4	P-O3	2.10	1.60	1.54

Continued on next page...

Continued from previous page...

Mol	Chain	Res	Type	Atoms	Z	Observed(Å)	Ideal(Å)
2	A	1213	MP5	O1-C3	-2.09	1.37	1.45

All (18) bond angle outliers are listed below:

Mol	Chain	Res	Type	Atoms	Z	Observed(°)	Ideal(°)
2	A	1213	MP5	O2-P1-O1	-5.28	92.69	106.73
3	D	4214	PO4	O2-P-O1	-4.46	94.59	110.89
3	C	3214	PO4	O2-P-O1	-4.24	95.38	110.89
3	D	4214	PO4	O4-P-O2	3.87	120.41	107.97
3	B	2214	PO4	O2-P-O1	-3.85	96.80	110.89
3	C	3214	PO4	O4-P-O2	3.75	120.00	107.97
3	B	2214	PO4	O4-P-O2	3.69	119.83	107.97
2	A	1213	MP5	O1-P1-O3	3.05	115.02	106.47
2	A	1213	MP5	O4-P1-O2	2.53	117.30	107.64
2	A	1213	MP5	O4-P1-O1	2.51	113.42	106.73
3	D	4214	PO4	O4-P-O3	2.49	115.96	107.97
3	C	3214	PO4	O4-P-O3	2.38	115.61	107.97
3	B	2214	PO4	O4-P-O3	2.38	115.60	107.97
3	B	2214	PO4	O3-P-O2	-2.35	100.43	107.97
2	A	1213	MP5	O2-P1-O3	-2.34	101.52	110.68
3	D	4214	PO4	O3-P-O2	-2.29	100.61	107.97
3	C	3214	PO4	O3-P-O2	-2.29	100.62	107.97
2	A	1213	MP5	O1-C3-C1	2.06	113.28	109.35

There are no chirality outliers.

All (4) torsion outliers are listed below:

Mol	Chain	Res	Type	Atoms
2	A	1213	MP5	C3-O1-P1-O2
2	A	1213	MP5	C3-O1-P1-O4
2	A	1213	MP5	C2-C1-C3-O1
2	A	1213	MP5	C6-C1-C3-O1

There are no ring outliers.

1 monomer is involved in 3 short contacts:

Mol	Chain	Res	Type	Clashes	Symm-Clashes
2	A	1213	MP5	3	0

5.7 Other polymers [i](#)

There are no such residues in this entry.

5.8 Polymer linkage issues [i](#)

There are no chain breaks in this entry.

6 Fit of model and data

6.1 Protein, DNA and RNA chains

In the following table, the column labelled ‘#RSRZ> 2’ contains the number (and percentage) of RSRZ outliers, followed by percent RSRZ outliers for the chain as percentile scores relative to all X-ray entries and entries of similar resolution. The OWAB column contains the minimum, median, 95th percentile and maximum values of the occupancy-weighted average B-factor per residue. The column labelled ‘Q< 0.9’ lists the number of (and percentage) of residues with an average occupancy less than 0.9.

Mol	Chain	Analysed	<RSRZ>	#RSRZ>2	OWAB(Å ²)	Q<0.9
1	A	201/220 (91%)	0.04	6 (2%) 50 61	8, 24, 56, 106	0
1	B	204/220 (92%)	0.14	8 (3%) 39 52	5, 27, 59, 121	0
1	C	203/220 (92%)	-0.09	2 (0%) 82 88	6, 22, 51, 67	0
1	D	201/220 (91%)	0.99	36 (17%) 1 2	10, 42, 82, 103	0
All	All	809/880 (91%)	0.27	52 (6%) 19 28	5, 26, 69, 121	0

All (52) RSRZ outliers are listed below:

Mol	Chain	Res	Type	RSRZ
1	B	209	GLU	5.1
1	D	143	LEU	4.5
1	A	182	PHE	4.4
1	D	24	ILE	4.2
1	D	100	TRP	4.1
1	D	35	ASN	4.0
1	D	92	ILE	3.9
1	D	34	GLU	3.8
1	D	15	ARG	3.7
1	D	36	PHE	3.7
1	D	149	TYR	3.7
1	D	182	PHE	3.6
1	D	205	ALA	3.5
1	D	38	LYS	3.3
1	D	8	LYS	3.2
1	A	181	GLU	3.0
1	D	151	GLU	3.0
1	D	206	TYR	2.9
1	D	41	VAL	2.8
1	D	40	LEU	2.8
1	A	92	ILE	2.8

Continued on next page...

Continued from previous page...

Mol	Chain	Res	Type	RSRZ
1	D	136	TRP	2.7
1	D	31	ILE	2.7
1	D	199	LEU	2.6
1	D	30	THR	2.6
1	A	15	ARG	2.6
1	C	180	GLY	2.6
1	B	180	GLY	2.6
1	D	14	TRP	2.5
1	D	148	PRO	2.5
1	D	150	GLN	2.5
1	B	31	ILE	2.4
1	B	177	GLU	2.4
1	D	137	LYS	2.4
1	D	27	ALA	2.3
1	D	97	GLU	2.3
1	D	144	LYS	2.3
1	A	9	GLU	2.3
1	D	146	ARG	2.3
1	B	100	TRP	2.2
1	A	85	LYS	2.2
1	D	94	LEU	2.2
1	D	23	LEU	2.2
1	D	141	GLU	2.2
1	C	177	GLU	2.2
1	D	12	ASN	2.2
1	D	154	ASN	2.2
1	D	93	SER	2.1
1	B	174	SER	2.1
1	B	207	GLY	2.1
1	D	81	GLU	2.1
1	B	8	LYS	2.0

6.2 Non-standard residues in protein, DNA, RNA chains [i](#)

There are no non-standard protein/DNA/RNA residues in this entry.

6.3 Carbohydrates [i](#)

There are no carbohydrates in this entry.

6.4 Ligands [i](#)

In the following table, the Atoms column lists the number of modelled atoms in the group and the number defined in the chemical component dictionary. The B-factors column lists the minimum, median, 95th percentile and maximum values of B factors of atoms in the group. The column labelled 'Q<0.9' lists the number of atoms with occupancy less than 0.9.

Mol	Type	Chain	Res	Atoms	RSCC	RSR	B-factors(\AA^2)	Q<0.9
3	PO4	B	2214	5/5	0.73	0.26	37,42,42,44	0
3	PO4	C	3214	5/5	0.82	0.20	32,36,39,40	0
3	PO4	D	4214	5/5	0.83	0.22	40,41,44,47	0
2	MP5	A	1213	14/14	0.86	0.21	34,38,39,41	0

6.5 Other polymers [i](#)

There are no such residues in this entry.