



Full wwPDB NMR Structure Validation Report ⓘ

Feb 19, 2022 – 04:43 PM EST

PDB ID : 1RMX
Title : A SHORT LEXITROPSIN THAT RECOGNIZES THE DNA MINOR GROOVE AT 5'-ACTAGT-3': UNDERSTANDING THE ROLE OF ISOPROPYL-THIAZOLE
Authors : Anthony, N.G.; Johnston, B.F.; Khalaf, A.I.; Mackay, S.P.; Parkinson, J.A.; Suckling, C.J.; Waigh, R.D.
Deposited on : 2003-11-28

This is a Full wwPDB NMR Structure Validation Report for a publicly released PDB entry.

We welcome your comments at validation@mail.wwpdb.org

A user guide is available at

<https://www.wwpdb.org/validation/2017/NMRValidationReportHelp>

with specific help available everywhere you see the ⓘ symbol.

The following versions of software and data (see [references ⓘ](#)) were used in the production of this report:

MolProbity : 4.02b-467
Mogul : 1.8.5 (274361), CSD as541be (2020)
buster-report : 1.1.7 (2018)
Percentile statistics : 20191225.v01 (using entries in the PDB archive December 25th 2019)
RCI : v_1n_11_5_13_A (Berjanski et al., 2005)
PANAV : Wang et al. (2010)
ShiftChecker : 2.26
Ideal geometry (proteins) : Engh & Huber (2001)
Ideal geometry (DNA, RNA) : Parkinson et al. (1996)
Validation Pipeline (wwPDB-VP) : 2.26

2 Ensemble composition and analysis

This entry contains 1 models. Identification of well-defined residues and clustering analysis are not possible.

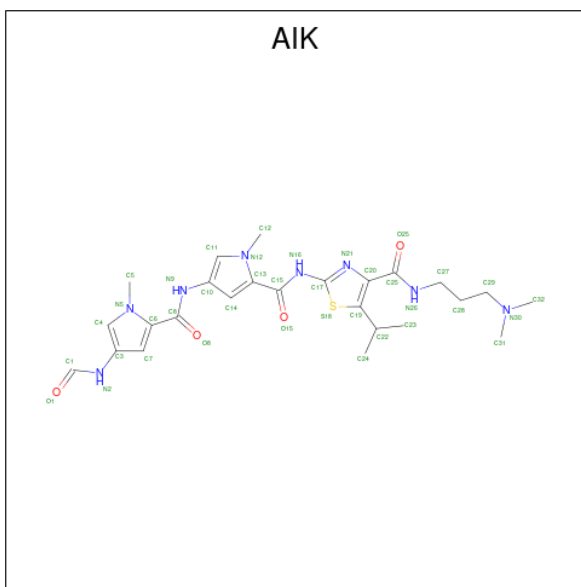
3 Entry composition [i](#)

There are 2 unique types of molecules in this entry. The entry contains 776 atoms, of which 296 are hydrogens and 0 are deuteriums.

- Molecule 1 is a DNA chain called 5'-D(*CP*GP*AP*CP*TP*AP*GP*TP*CP*G)-3'.

Mol	Chain	Residues	Atoms					Trace	
			Total	C	H	N	O		P
1	A	10	316	97	114	38	58	9	0
1	B	10	316	97	114	38	58	9	0

- Molecule 2 is N-[3-(DIMETHYLAMINO)PROPYL]-2-({[4-({[4-(FORMYLAMINO)-1-METHYL-1H-PYRROL-2-YL]CARBOXYL}AMINO)-1-METHYL-1H-PYRROL-2-YL]CARBOXYL}AMINO)-5-ISOPROPYL-1,3-THIAZOLE-4-CARBOXAMIDE (three-letter code: AIK) (formula: C₂₅H₃₄N₈O₄S).



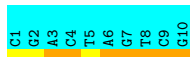
Mol	Chain	Residues	Atoms					
			Total	C	H	N	O	S
2	A	1	72	25	34	8	4	1
2	B	1	72	25	34	8	4	1

4 Residue-property plots

These plots are provided for all protein, RNA, DNA and oligosaccharide chains in the entry. The first graphic is the same as shown in the summary in section 1 of this report. The second graphic shows the sequence where residues are colour-coded according to the number of geometric quality criteria for which they contain at least one outlier: green = 0, yellow = 1, orange = 2 and red = 3 or more. Stretches of 2 or more consecutive residues without any outliers are shown as green connectors. Residues which are classified as ill-defined in the NMR ensemble, are shown in cyan with an underline colour-coded according to the previous scheme. Residues which were present in the experimental sample, but not modelled in the final structure are shown in grey.

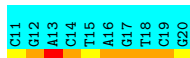
- Molecule 1: 5'-D(*CP*GP*AP*CP*TP*AP*GP*TP*CP*G)-3'

Chain A:  100%



- Molecule 1: 5'-D(*CP*GP*AP*CP*TP*AP*GP*TP*CP*G)-3'

Chain B:  100%



5 Refinement protocol and experimental data overview

The models were refined using the following method: *Restrained Molecular Dynamics*.

Of the ? calculated structures, 1 were deposited, based on the following criterion: ?.

The following table shows the software used for structure solution, optimisation and refinement.

Software name	Classification	Version
SYBYL	refinement	6.3

No chemical shift data was provided.

6 Model quality [i](#)

6.1 Standard geometry [i](#)

Bond lengths and bond angles in the following residue types are not validated in this section: AIK

There are no covalent bond-length or bond-angle outliers.

There are no bond-length outliers.

There are no bond-angle outliers.

There are no chirality outliers.

There are no planarity outliers.

6.2 Too-close contacts [i](#)

In the following table, the Non-H and H(model) columns list the number of non-hydrogen atoms and hydrogen atoms in each chain respectively. The H(added) column lists the number of hydrogen atoms added and optimized by MolProbity. The Clashes column lists the number of clashes averaged over the ensemble.

Mol	Chain	Non-H	H(model)	H(added)	Clashes
1	A	0	0	0	0
1	B	0	0	0	0
2	A	38	34	0	0
2	B	38	34	0	0
All	All	76	68	0	-

The all-atom clashscore is defined as the number of clashes found per 1000 atoms (including hydrogen atoms). The all-atom clashscore for this structure is -.

There are no clashes.

6.3 Torsion angles [i](#)

6.3.1 Protein backbone [i](#)

There are no protein molecules in this entry.

6.3.2 Protein sidechains [i](#)

There are no protein molecules in this entry.

6.3.3 RNA [i](#)

There are no RNA molecules in this entry.

6.4 Non-standard residues in protein, DNA, RNA chains [i](#)

There are no non-standard protein/DNA/RNA residues in this entry.

6.5 Carbohydrates [i](#)

There are no monosaccharides in this entry.

6.6 Ligand geometry [i](#)

2 ligands are modelled in this entry.

In the following table, the Counts columns list the number of bonds for which Mogul statistics could be retrieved, the number of bonds that are observed in the model and the number of bonds that are defined in the chemical component dictionary. The Link column lists molecule types, if any, to which the group is linked. The Z score for a bond length is the number of standard deviations the observed value is removed from the expected value. A bond length with $|Z| > 2$ is considered an outlier worth inspection. RMSZ is the average root-mean-square of all Z scores of the bond lengths.

Mol	Type	Chain	Res	Link	Bond lengths		
					Counts	RMSZ	#Z>2
2	AIK	B	2	-	34,40,40	3.10	12 (35%)
2	AIK	A	11	-	34,40,40	3.16	12 (35%)

In the following table, the Counts columns list the number of angles for which Mogul statistics could be retrieved, the number of angles that are observed in the model and the number of angles that are defined in the chemical component dictionary. The Link column lists molecule types, if any, to which the group is linked. The Z score for a bond angle is the number of standard deviations the observed value is removed from the expected value. A bond angle with $|Z| > 2$ is considered an outlier worth inspection. RMSZ is the average root-mean-square of all Z scores of the bond angles.

Mol	Type	Chain	Res	Link	Bond angles		
					Counts	RMSZ	#Z>2
2	AIK	B	2	-	32,56,56	2.03	9 (28%)
2	AIK	A	11	-	32,56,56	2.15	10 (31%)

In the following table, the Chirals column lists the number of chiral outliers, the number of chiral centers analysed, the number of these observed in the model and the number defined in the chemical component dictionary. Similar counts are reported in the Torsion and Rings columns. '-' means no outliers of that kind were identified.

Mol	Type	Chain	Res	Link	Chirals	Torsions	Rings
2	AIK	B	2	-	-	0,16,34,34	0,3,3,3
2	AIK	A	11	-	-	0,16,34,34	0,3,3,3

All bond outliers are listed below. They are sorted according to the Z-score.

Mol	Chain	Res	Type	Atoms	Z	Observed(Å)	Ideal(Å)
2	A	11	AIK	C19-S18	8.53	1.58	1.74
2	A	11	AIK	C7-C3	8.44	1.47	1.39
2	A	11	AIK	C14-C10	8.40	1.47	1.39
2	B	2	AIK	C14-C10	8.34	1.47	1.39
2	B	2	AIK	C19-S18	8.23	1.58	1.74
2	B	2	AIK	C7-C3	8.11	1.46	1.39
2	A	11	AIK	C4-C3	4.02	1.34	1.38
2	B	2	AIK	C14-C13	3.99	1.33	1.39
2	A	11	AIK	C14-C13	3.87	1.34	1.39
2	B	2	AIK	C4-C3	3.87	1.34	1.38
2	B	2	AIK	C11-C10	3.84	1.34	1.38
2	A	11	AIK	C7-C6	3.83	1.34	1.39
2	A	11	AIK	C11-C10	3.82	1.34	1.38
2	B	2	AIK	C7-C6	3.77	1.34	1.39
2	B	2	AIK	C3-N2	3.30	1.35	1.41
2	A	11	AIK	C3-N2	3.27	1.35	1.41
2	A	11	AIK	C10-N9	3.09	1.35	1.41
2	B	2	AIK	C10-N9	3.04	1.35	1.41
2	A	11	AIK	C1-N2	2.89	1.30	1.34
2	A	11	AIK	C13-N12	2.85	1.30	1.36
2	B	2	AIK	C1-N2	2.84	1.30	1.34
2	B	2	AIK	C13-N12	2.83	1.31	1.36
2	B	2	AIK	C6-N5	2.79	1.31	1.36
2	A	11	AIK	C6-N5	2.68	1.31	1.36

All angle outliers are listed below. They are sorted according to the Z-score.

Mol	Chain	Res	Type	Atoms	Z	Observed(°)	Ideal(°)
2	B	2	AIK	C23-C22-C19	5.48	120.22	110.96
2	A	11	AIK	C24-C22-C19	4.92	119.27	110.96
2	A	11	AIK	C4-N5-C6	4.37	113.30	108.65
2	B	2	AIK	C11-N12-C13	4.27	113.19	108.65
2	B	2	AIK	C4-N5-C6	4.25	113.17	108.65

Continued on next page...

Continued from previous page...

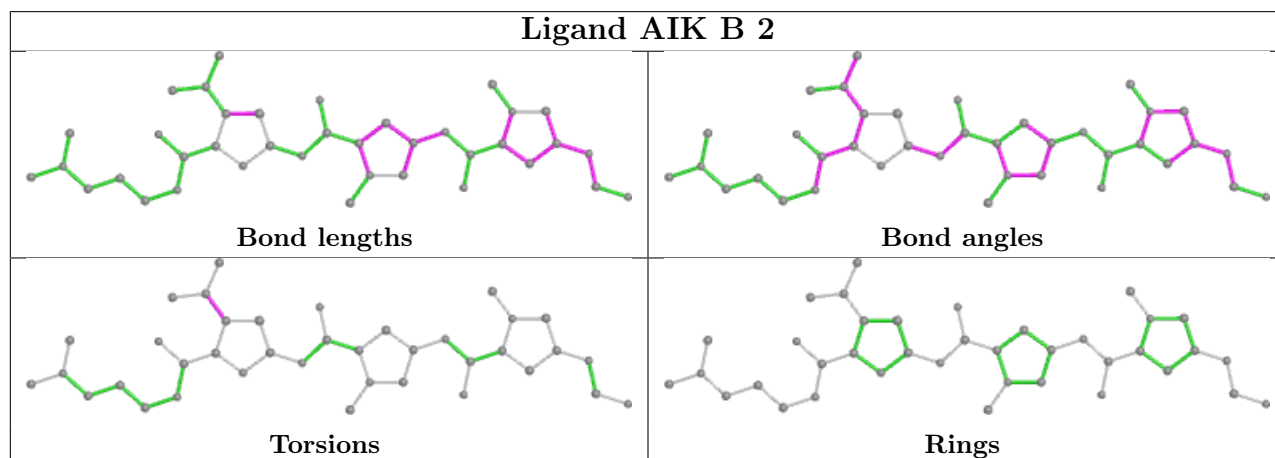
Mol	Chain	Res	Type	Atoms	Z	Observed(°)	Ideal(°)
2	A	11	AIK	C11-N12-C13	4.13	113.04	108.65
2	A	11	AIK	C3-N2-C1	3.67	122.77	127.89
2	A	11	AIK	C20-C25-N26	3.27	118.86	115.67
2	A	11	AIK	O1-C1-N2	3.21	121.71	125.80
2	A	11	AIK	C14-C10-C11	3.08	104.54	106.05
2	B	2	AIK	C20-C25-N26	3.05	118.65	115.67
2	B	2	AIK	C3-N2-C1	3.02	123.68	127.89
2	B	2	AIK	C14-C10-C11	2.94	104.61	106.05
2	B	2	AIK	C20-C19-C22	2.86	134.54	129.87
2	A	11	AIK	C20-C19-C22	2.83	134.50	129.87
2	B	2	AIK	C4-C3-C7	2.41	104.87	106.05
2	A	11	AIK	C28-C29-N30	2.40	107.29	113.79
2	A	11	AIK	C17-N16-C15	2.23	121.11	126.64
2	B	2	AIK	C17-N16-C15	2.20	121.18	126.64

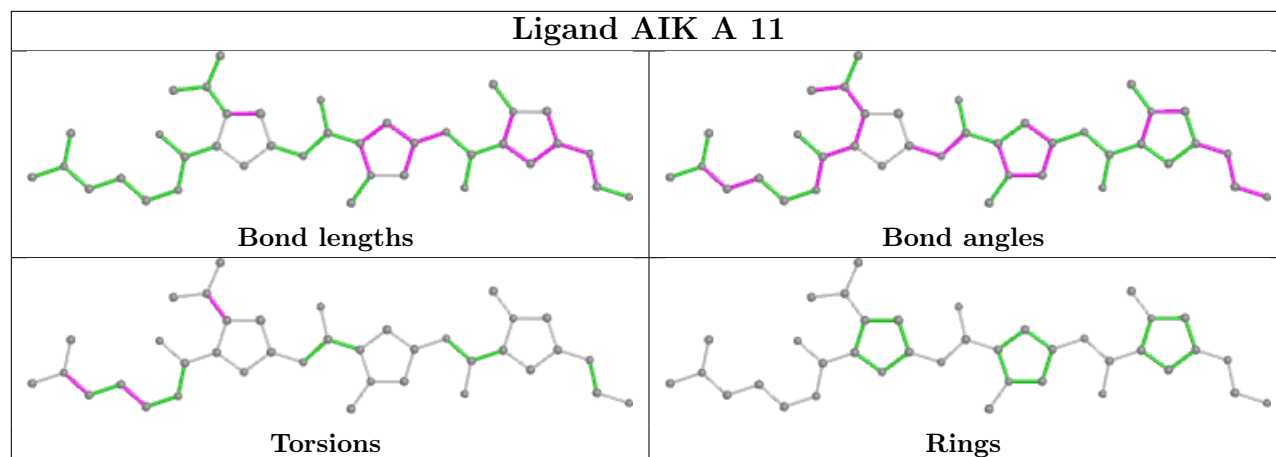
There are no chirality outliers.

There are no torsion outliers.

There are no ring outliers.

The following is a two-dimensional graphical depiction of Mogul quality analysis of bond lengths, bond angles, torsion angles, and ring geometry for all instances of the Ligand of Interest. In addition, ligands with molecular weight > 250 and outliers as shown on the validation Tables will also be included. For torsion angles, if less than 5% of the Mogul distribution of torsion angles is within 10 degrees of the torsion angle in question, then that torsion angle is considered an outlier. Any bond that is central to one or more torsion angles identified as an outlier by Mogul will be highlighted in the graph. For rings, the root-mean-square deviation (RMSD) between the ring in question and similar rings identified by Mogul is calculated over all ring torsion angles. If the average RMSD is greater than 60 degrees and the minimal RMSD between the ring in question and any Mogul-identified rings is also greater than 60 degrees, then that ring is considered an outlier. The outliers are highlighted in purple. The color gray indicates Mogul did not find sufficient equivalents in the CSD to analyse the geometry.





6.7 Other polymers [i](#)

There are no such molecules in this entry.

6.8 Polymer linkage issues [i](#)

There are no chain breaks in this entry.

7 Chemical shift validation

No chemical shift data were provided