



# Full wwPDB X-ray Structure Validation Report ⓘ

May 25, 2020 – 04:32 pm BST

PDB ID : 1RJD  
Title : Structure of PPM1, a leucine carboxy methyltransferase involved in the regulation of protein phosphatase 2A activity  
Authors : Leulliot, N.; Quevillon-Cheruel, S.; Sorel, I.; Li de La Sierra-Gallay, I.; Collinet, B.; Graille, M.; Blondeau, K.; Bettache, N.; Poupon, A.; Janin, J.; van Tilbeurgh, H.  
Deposited on : 2003-11-19  
Resolution : 1.80 Å(reported)

This is a Full wwPDB X-ray Structure Validation Report for a publicly released PDB entry.

We welcome your comments at [validation@mail.wwpdb.org](mailto:validation@mail.wwpdb.org)

A user guide is available at

<https://www.wwpdb.org/validation/2017/XrayValidationReportHelp>

with specific help available everywhere you see the ⓘ symbol.

---

The following versions of software and data (see [references ⓘ](#)) were used in the production of this report:

MolProbity : 4.02b-467  
Mogul : 1.8.5 (274361), CSD as541be (2020)  
Xtriage (Phenix) : 1.13  
EDS : 2.11  
buster-report : 1.1.7 (2018)  
Percentile statistics : 20191225.v01 (using entries in the PDB archive December 25th 2019)  
Refmac : 5.8.0158  
CCP4 : 7.0.044 (Gargrove)  
Ideal geometry (proteins) : Engh & Huber (2001)  
Ideal geometry (DNA, RNA) : Parkinson et al. (1996)  
Validation Pipeline (wwPDB-VP) : 2.11

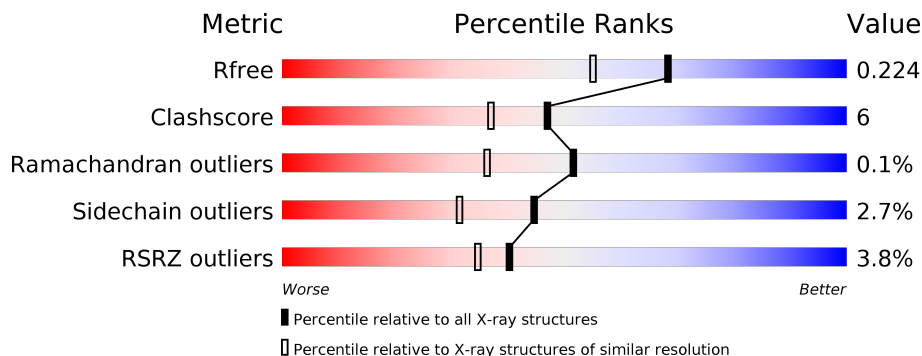
# 1 Overall quality at a glance

The following experimental techniques were used to determine the structure:

*X-RAY DIFFRACTION*

The reported resolution of this entry is 1.80 Å.

Percentile scores (ranging between 0-100) for global validation metrics of the entry are shown in the following graphic. The table shows the number of entries on which the scores are based.



Metric	Whole archive (#Entries)	Similar resolution (#Entries, resolution range(Å))
$R_{free}$	130704	5950 (1.80-1.80)
Clashscore	141614	6793 (1.80-1.80)
Ramachandran outliers	138981	6697 (1.80-1.80)
Sidechain outliers	138945	6696 (1.80-1.80)
RSRZ outliers	127900	5850 (1.80-1.80)

The table below summarises the geometric issues observed across the polymeric chains and their fit to the electron density. The red, orange, yellow and green segments on the lower bar indicate the fraction of residues that contain outliers for  $\geq 3$ , 2, 1 and 0 types of geometric quality criteria respectively. A grey segment represents the fraction of residues that are not modelled. The numeric value for each fraction is indicated below the corresponding segment, with a dot representing fractions  $\leq 5\%$ . The upper red bar (where present) indicates the fraction of residues that have poor fit to the electron density. The numeric value is given above the bar.

Mol	Chain	Length	Quality of chain
1	A	334	
1	B	334	
1	C	334	

## 2 Entry composition

There are 5 unique types of molecules in this entry. The entry contains 8873 atoms, of which 0 are hydrogens and 0 are deuteriums.

In the tables below, the ZeroOcc column contains the number of atoms modelled with zero occupancy, the AltConf column contains the number of residues with at least one atom in alternate conformation and the Trace column contains the number of residues modelled with at most 2 atoms.

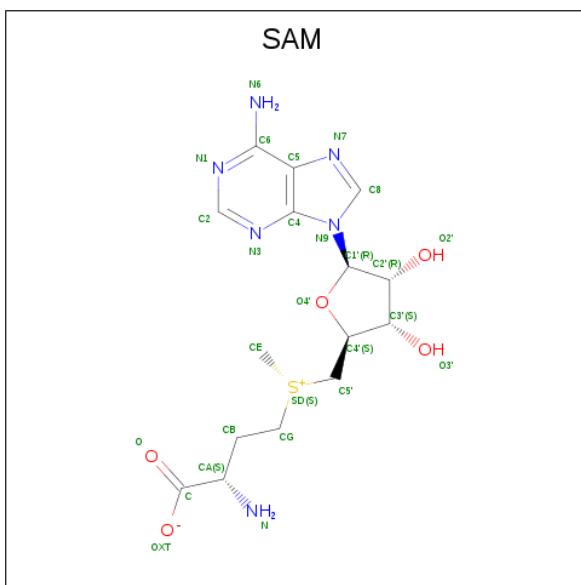
- Molecule 1 is a protein called carboxy methyl transferase for protein phosphatase 2A catalytic subunit.

Mol	Chain	Residues	Atoms					ZeroOcc	AltConf	Trace
			Total	C	N	O	S			
1	A	328	Total 2644	C 1681	N 451	O 494	S 18	0	0	0
1	B	329	Total 2660	C 1690	N 454	O 498	S 18	0	1	0
1	C	333	Total 2694	C 1711	N 466	O 499	S 18	0	0	0

There are 18 discrepancies between the modelled and reference sequences:

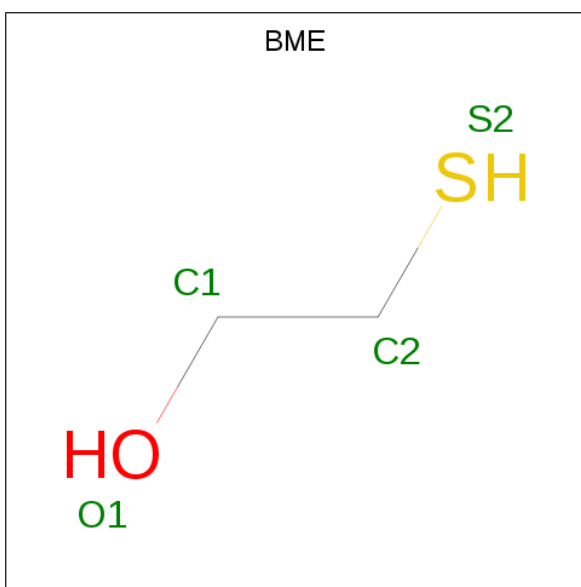
Chain	Residue	Modelled	Actual	Comment	Reference
A	329	HIS	-	EXPRESSION TAG	UNP Q04081
A	330	HIS	-	EXPRESSION TAG	UNP Q04081
A	331	HIS	-	EXPRESSION TAG	UNP Q04081
A	332	HIS	-	EXPRESSION TAG	UNP Q04081
A	333	HIS	-	EXPRESSION TAG	UNP Q04081
A	334	HIS	-	EXPRESSION TAG	UNP Q04081
B	329	HIS	-	EXPRESSION TAG	UNP Q04081
B	330	HIS	-	EXPRESSION TAG	UNP Q04081
B	331	HIS	-	EXPRESSION TAG	UNP Q04081
B	332	HIS	-	EXPRESSION TAG	UNP Q04081
B	333	HIS	-	EXPRESSION TAG	UNP Q04081
B	334	HIS	-	EXPRESSION TAG	UNP Q04081
C	329	HIS	-	EXPRESSION TAG	UNP Q04081
C	330	HIS	-	EXPRESSION TAG	UNP Q04081
C	331	HIS	-	EXPRESSION TAG	UNP Q04081
C	332	HIS	-	EXPRESSION TAG	UNP Q04081
C	333	HIS	-	EXPRESSION TAG	UNP Q04081
C	334	HIS	-	EXPRESSION TAG	UNP Q04081

- Molecule 2 is S-ADENOSYLMETHIONINE (three-letter code: SAM) (formula: C<sub>15</sub>H<sub>22</sub>N<sub>6</sub>O<sub>5</sub>S).



Mol	Chain	Residues	Atoms				ZeroOcc	AltConf	
2	A	1	Total	C	N	O	S	0	0
			27	15	6	5	1		
2	B	1	Total	C	N	O	S	0	0
			27	15	6	5	1		
2	C	1	Total	C	N	O	S	0	0
			27	15	6	5	1		

- Molecule 3 is BETA-MERCAPTOETHANOL (three-letter code: BME) (formula: C<sub>2</sub>H<sub>6</sub>OS).



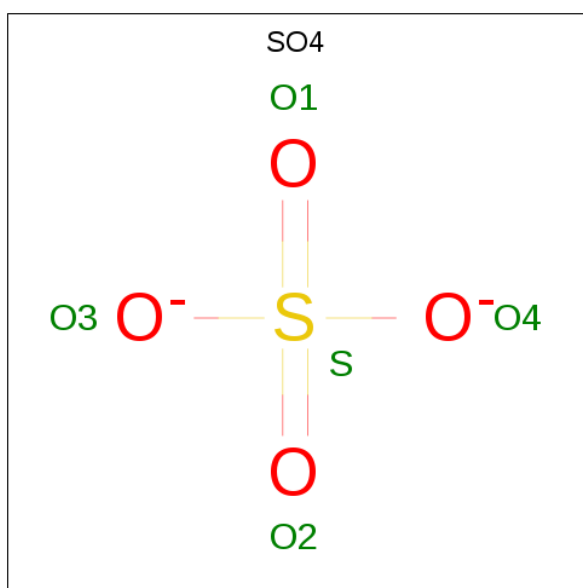
Mol	Chain	Residues	Atoms				ZeroOcc	AltConf
3	A	1	Total	C	O	S	0	0
			4	2	1	1		

*Continued on next page...*

Continued from previous page...

Mol	Chain	Residues	Atoms				ZeroOcc	AltConf
3	A	1	Total	C	O	S	0	0
			4	2	1	1		
3	B	1	Total	C	O	S	0	0
			4	2	1	1		
3	B	1	Total	C	O	S	0	0
			4	2	1	1		
3	C	1	Total	C	O	S	0	0
			4	2	1	1		
3	C	1	Total	C	O	S	0	0
			4	2	1	1		

- Molecule 4 is SULFATE ION (three-letter code: SO4) (formula: O<sub>4</sub>S).



Mol	Chain	Residues	Atoms			ZeroOcc	AltConf
4	C	1	Total	O	S	0	0
			5	4	1		

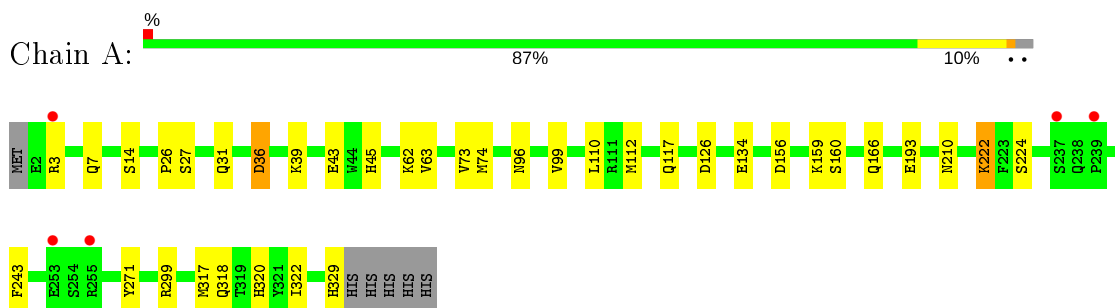
- Molecule 5 is water.

Mol	Chain	Residues	Atoms		ZeroOcc	AltConf
5	A	298	Total	O	0	0
			298	298		
5	B	247	Total	O	0	0
			247	247		
5	C	220	Total	O	0	0
			220	220		

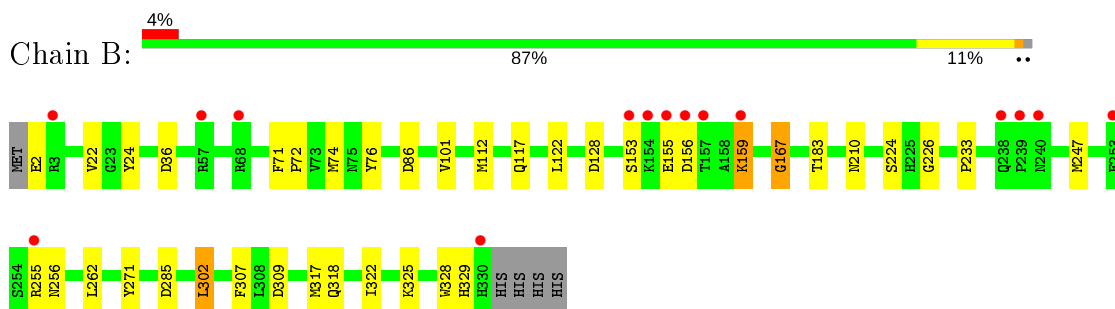
### 3 Residue-property plots [i](#)

These plots are drawn for all protein, RNA and DNA chains in the entry. The first graphic for a chain summarises the proportions of the various outlier classes displayed in the second graphic. The second graphic shows the sequence view annotated by issues in geometry and electron density. Residues are color-coded according to the number of geometric quality criteria for which they contain at least one outlier: green = 0, yellow = 1, orange = 2 and red = 3 or more. A red dot above a residue indicates a poor fit to the electron density ( $RSRZ > 2$ ). Stretches of 2 or more consecutive residues without any outlier are shown as a green connector. Residues present in the sample, but not in the model, are shown in grey.

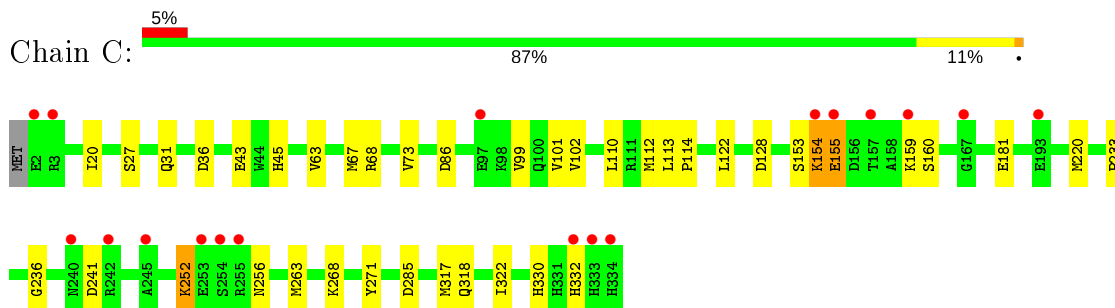
- Molecule 1: carboxy methyl transferase for protein phosphatase 2A catalytic subunit



- Molecule 1: carboxy methyl transferase for protein phosphatase 2A catalytic subunit



- Molecule 1: carboxy methyl transferase for protein phosphatase 2A catalytic subunit



## 4 Data and refinement statistics

Property	Value	Source
Space group	P 65	Depositor
Cell constants a, b, c, $\alpha$ , $\beta$ , $\gamma$	110.68Å 110.68Å 165.88Å 90.00° 90.00° 120.00°	Depositor
Resolution (Å)	52.70 – 1.80 52.50 – 1.80	Depositor EDS
% Data completeness (in resolution range)	100.0 (52.70-1.80) 100.0 (52.50-1.80)	Depositor EDS
$R_{merge}$	(Not available)	Depositor
$R_{sym}$	(Not available)	Depositor
$\langle I/\sigma(I) \rangle$ <sup>1</sup>	2.30 (at 1.80Å)	Xtrriage
Refinement program	REFMAC 5.1.24	Depositor
R, $R_{free}$	0.178 , 0.215 0.190 , 0.224	Depositor DCC
$R_{free}$ test set	5424 reflections (5.11%)	wwPDB-VP
Wilson B-factor (Å <sup>2</sup> )	12.8	Xtrriage
Anisotropy	0.040	Xtrriage
Bulk solvent $k_{sol}$ (e/Å <sup>3</sup> ), $B_{sol}$ (Å <sup>2</sup> )	0.37 , 27.3	EDS
L-test for twinning <sup>2</sup>	$\langle  L  \rangle = 0.45$ , $\langle L^2 \rangle = 0.27$	Xtrriage
Estimated twinning fraction	0.239 for h,-h-k,-l	Xtrriage
$F_o, F_c$ correlation	0.95	EDS
Total number of atoms	8873	wwPDB-VP
Average B, all atoms (Å <sup>2</sup> )	15.0	wwPDB-VP

Xtrriage's analysis on translational NCS is as follows: *The largest off-origin peak in the Patterson function is 4.95% of the height of the origin peak. No significant pseudotranslation is detected.*

<sup>1</sup>Intensities estimated from amplitudes.

<sup>2</sup>Theoretical values of  $\langle |L| \rangle$ ,  $\langle L^2 \rangle$  for acentric reflections are 0.5, 0.333 respectively for untwinned datasets, and 0.375, 0.2 for perfectly twinned datasets.

## 5 Model quality [i](#)

### 5.1 Standard geometry [i](#)

Bond lengths and bond angles in the following residue types are not validated in this section: SO4, SAM, BME

The Z score for a bond length (or angle) is the number of standard deviations the observed value is removed from the expected value. A bond length (or angle) with  $|Z| > 5$  is considered an outlier worth inspection. RMSZ is the root-mean-square of all Z scores of the bond lengths (or angles).

Mol	Chain	Bond lengths		Bond angles	
		RMSZ	# Z  >5	RMSZ	# Z  >5
1	A	0.61	0/2694	0.77	3/3639 (0.1%)
1	B	0.60	0/2714	0.77	3/3666 (0.1%)
1	C	0.55	0/2749	0.75	4/3714 (0.1%)
All	All	0.59	0/8157	0.76	10/11019 (0.1%)

There are no bond length outliers.

All (10) bond angle outliers are listed below:

Mol	Chain	Res	Type	Atoms	Z	Observed(°)	Ideal(°)
1	B	285	ASP	CB-CG-OD2	6.54	124.18	118.30
1	C	285	ASP	CB-CG-OD2	6.33	124.00	118.30
1	A	36	ASP	CB-CG-OD2	6.14	123.83	118.30
1	A	126	ASP	CB-CG-OD1	6.04	123.73	118.30
1	A	156	ASP	CB-CG-OD2	5.63	123.37	118.30
1	C	128	ASP	CB-CG-OD2	5.55	123.30	118.30
1	B	128	ASP	CB-CG-OD2	5.48	123.23	118.30
1	B	86	ASP	CB-CG-OD2	5.30	123.07	118.30
1	C	241	ASP	CB-CG-OD2	5.08	122.87	118.30
1	C	86	ASP	CB-CG-OD2	5.06	122.85	118.30

There are no chirality outliers.

There are no planarity outliers.

### 5.2 Too-close contacts [i](#)

In the following table, the Non-H and H(model) columns list the number of non-hydrogen atoms and hydrogen atoms in the chain respectively. The H(added) column lists the number of hydrogen atoms added and optimized by MolProbity. The Clashes column lists the number of clashes within the asymmetric unit, whereas Symm-Clashes lists symmetry related clashes.



Mol	Chain	Non-H	H(model)	H(added)	Clashes	Symm-Clashes
1	A	2644	0	2670	40	0
1	B	2660	0	2680	31	0
1	C	2694	0	2705	34	0
2	A	27	0	22	0	0
2	B	27	0	22	0	0
2	C	27	0	22	0	0
3	A	8	0	10	0	0
3	B	8	0	10	1	0
3	C	8	0	10	1	0
4	C	5	0	0	1	0
5	A	298	0	0	15	0
5	B	247	0	0	9	1
5	C	220	0	0	12	0
All	All	8873	0	8151	101	1

The all-atom clashscore is defined as the number of clashes found per 1000 atoms (including hydrogen atoms). The all-atom clashscore for this structure is 6.

All (101) close contacts within the same asymmetric unit are listed below, sorted by their clash magnitude.

Atom-1	Atom-2	Interatomic distance (Å)	Clash overlap (Å)
1:B:159:LYS:O	5:B:1008:HOH:O	1.69	1.09
1:A:73:VAL:CG2	5:A:977:HOH:O	2.09	0.99
1:A:317:MET:HE2	1:A:318:GLN:HE21	1.35	0.90
1:A:73:VAL:HG12	1:A:317:MET:HE1	1.52	0.89
1:A:317:MET:CE	1:A:318:GLN:HE21	1.87	0.86
1:C:181:GLU:OE1	5:C:1008:HOH:O	1.93	0.86
1:C:271:TYR:CD2	1:C:322:ILE:HD11	2.12	0.83
1:A:27:SER:H	1:A:31:GLN:HE21	1.26	0.83
1:A:74:MET:HG3	5:A:1077:HOH:O	1.82	0.80
1:C:317:MET:HE2	1:C:318:GLN:HE21	1.49	0.78
1:A:73:VAL:HG22	5:A:977:HOH:O	1.79	0.76
1:C:236:GLY:O	5:C:1007:HOH:O	2.06	0.73
1:A:73:VAL:HG21	5:A:977:HOH:O	1.79	0.72
1:C:45:HIS:CD2	1:C:110:LEU:HD12	2.24	0.72
1:A:36:ASP:H	1:B:117:GLN:HE22	1.39	0.71
1:C:73:VAL:CG2	5:C:838:HOH:O	2.40	0.69
1:C:271:TYR:CG	1:C:322:ILE:HD11	2.27	0.69
1:A:271:TYR:CG	1:A:322:ILE:HD11	2.28	0.69
1:A:27:SER:H	1:A:31:GLN:NE2	1.91	0.68
1:A:299:ARG:CZ	5:A:989:HOH:O	2.42	0.68
1:C:220:MET:O	1:C:330:HIS:HE1	1.76	0.66

*Continued on next page...*

*Continued from previous page...*

Atom-1	Atom-2	Interatomic distance (Å)	Clash overlap (Å)
1:A:134:GLU:HG3	5:A:1019:HOH:O	1.95	0.65
1:B:76:TYR:HE2	5:B:1021:HOH:O	1.80	0.64
1:C:36:ASP:HB3	5:C:982:HOH:O	1.98	0.64
1:B:183:THR:HG21	5:B:998:HOH:O	1.97	0.63
1:C:317:MET:HE2	1:C:318:GLN:NE2	2.13	0.63
1:C:317:MET:CE	1:C:318:GLN:NE2	2.62	0.63
1:C:43:GLU:HG2	5:C:971:HOH:O	2.00	0.62
1:C:99:VAL:HB	5:C:1028:HOH:O	1.99	0.61
1:A:45:HIS:CD2	1:A:110:LEU:HD12	2.36	0.61
1:A:36:ASP:H	1:B:117:GLN:NE2	1.99	0.60
1:B:307:PHE:CE2	1:B:309:ASP:OD1	2.55	0.60
1:A:117:GLN:HE22	1:B:36:ASP:H	1.50	0.59
1:A:317:MET:CE	1:A:318:GLN:NE2	2.61	0.59
1:A:73:VAL:HG23	5:A:869:HOH:O	2.03	0.59
1:B:71:PHE:CE2	1:B:74:MET:SD	2.96	0.58
1:C:317:MET:CE	1:C:318:GLN:HE21	2.16	0.58
1:C:73:VAL:HG23	5:C:817:HOH:O	2.03	0.57
1:B:271:TYR:CE2	1:B:322:ILE:HD11	2.41	0.55
1:C:73:VAL:HG22	5:C:838:HOH:O	2.03	0.55
1:A:39:LYS:HB2	5:C:929:HOH:O	2.06	0.55
1:B:317:MET:CE	1:B:318:GLN:HE21	2.20	0.55
1:A:271:TYR:CD2	1:A:322:ILE:HD11	2.42	0.54
1:A:7:GLN:HE22	1:A:62:LYS:NZ	2.05	0.54
1:C:330:HIS:HB2	1:C:332:HIS:CE1	2.43	0.53
1:B:307:PHE:CD2	1:B:309:ASP:OD1	2.62	0.53
1:B:22:VAL:HG12	1:B:22:VAL:O	2.09	0.52
1:C:330:HIS:HD2	4:C:335:SO4:O2	1.93	0.52
1:C:27:SER:H	1:C:31:GLN:NE2	2.08	0.52
1:A:317:MET:HE3	1:A:318:GLN:NE2	2.25	0.51
1:B:101:VAL:HG23	1:B:122:LEU:HD11	1.91	0.51
1:A:3:ARG:O	1:A:7:GLN:HG3	2.11	0.51
1:A:117:GLN:NE2	1:B:36:ASP:H	2.10	0.50
1:A:222:LYS:HE2	5:A:1059:HOH:O	2.11	0.50
1:C:252:LYS:HE3	1:C:256:ASN:HD22	1.77	0.50
1:C:27:SER:H	1:C:31:GLN:HE21	1.58	0.50
1:A:7:GLN:HE22	1:A:62:LYS:HZ2	1.59	0.49
1:B:153:SER:HB2	5:B:1030:HOH:O	2.12	0.49
1:C:20:ILE:CD1	1:C:45:HIS:ND1	2.76	0.48
1:A:243:PHE:CG	1:A:320:HIS:CD2	3.01	0.48
1:A:7:GLN:NE2	5:A:1057:HOH:O	2.45	0.48
1:B:71:PHE:CE1	1:B:74:MET:HG3	2.48	0.48

*Continued on next page...*

*Continued from previous page...*

Atom-1	Atom-2	Interatomic distance (Å)	Clash overlap (Å)
1:A:14:SER:OG	1:A:63:VAL:HA	2.14	0.48
1:A:299:ARG:NH1	5:A:989:HOH:O	2.46	0.48
1:B:71:PHE:HB2	1:B:72:PRO:HD2	1.97	0.47
1:C:73:VAL:HG12	1:C:317:MET:CE	2.45	0.47
1:A:96:ASN:O	1:A:99:VAL:HG23	2.14	0.47
1:B:317:MET:HE3	1:B:318:GLN:NE2	2.30	0.47
1:A:26:PRO:HA	1:A:31:GLN:HE22	1.80	0.47
1:B:76:TYR:OH	5:B:1028:HOH:O	2.05	0.46
1:A:224:SER:O	1:A:329:HIS:HA	2.15	0.46
1:A:73:VAL:HG21	5:A:879:HOH:O	2.15	0.46
1:B:167:GLY:O	5:B:1029:HOH:O	2.21	0.46
1:A:222:LYS:HG3	5:A:881:HOH:O	2.14	0.46
1:B:322:ILE:C	1:B:322:ILE:HD12	2.36	0.46
1:C:122:LEU:HG	5:C:1028:HOH:O	2.17	0.45
1:B:155:GLU:OE1	5:B:1030:HOH:O	2.21	0.45
1:C:154:LYS:HZ3	1:C:155:GLU:H	1.64	0.45
1:C:271:TYR:CD2	1:C:322:ILE:CD1	2.94	0.45
1:C:233:PRO:HD3	3:C:806:BME:S2	2.57	0.45
1:C:63:VAL:O	1:C:67:MET:HB2	2.17	0.44
1:B:233:PRO:HD3	3:B:805:BME:S2	2.57	0.44
1:B:159:LYS:C	5:B:1008:HOH:O	2.34	0.44
1:C:317:MET:HE3	1:C:318:GLN:NE2	2.32	0.44
1:C:113:LEU:HB2	1:C:114:PRO:HD3	2.00	0.43
1:B:317:MET:HE3	1:B:318:GLN:HE21	1.83	0.43
1:C:102:VAL:C	5:C:900:HOH:O	2.56	0.43
1:C:20:ILE:HD11	1:C:45:HIS:ND1	2.34	0.43
1:A:74:MET:CG	5:A:1077:HOH:O	2.53	0.43
1:B:156:ASP:HB3	5:B:955:HOH:O	2.18	0.42
1:C:101:VAL:HG12	5:C:900:HOH:O	2.19	0.42
1:A:39:LYS:HE3	1:A:43:GLU:OE2	2.20	0.42
1:A:36:ASP:HB3	5:A:1049:HOH:O	2.20	0.42
1:B:226:GLY:HA3	1:B:328:TRP:CZ2	2.55	0.41
1:A:7:GLN:CD	5:A:1002:HOH:O	2.59	0.41
1:B:224:SER:O	1:B:329:HIS:HA	2.20	0.41
1:C:263:MET:HE3	1:C:263:MET:HA	2.02	0.41
1:B:24:TYR:CG	1:B:302:LEU:HD13	2.55	0.41
1:B:247:MET:CE	1:B:262:LEU:HD21	2.51	0.40
1:A:39:LYS:CE	1:A:43:GLU:OE2	2.69	0.40
1:B:22:VAL:CG1	1:B:22:VAL:O	2.69	0.40

All (1) symmetry-related close contacts are listed below. The label for Atom-2 includes the symmetry operator and encoded unit-cell translations to be applied.

Atom-1	Atom-2	Interatomic distance (Å)	Clash overlap (Å)
5:B:1035:HOH:O	5:B:1037:HOH:O[6_664]	2.16	0.04

### 5.3 Torsion angles [i](#)

#### 5.3.1 Protein backbone [i](#)

In the following table, the Percentiles column shows the percent Ramachandran outliers of the chain as a percentile score with respect to all X-ray entries followed by that with respect to entries of similar resolution.

The Analysed column shows the number of residues for which the backbone conformation was analysed, and the total number of residues.

Mol	Chain	Analysed	Favoured	Allowed	Outliers	Percentiles	
1	A	326/334 (98%)	320 (98%)	6 (2%)	0	100	100
1	B	328/334 (98%)	322 (98%)	5 (2%)	1 (0%)	41	27
1	C	331/334 (99%)	324 (98%)	7 (2%)	0	100	100
All	All	985/1002 (98%)	966 (98%)	18 (2%)	1 (0%)	51	36

All (1) Ramachandran outliers are listed below:

Mol	Chain	Res	Type
1	B	167	GLY

#### 5.3.2 Protein sidechains [i](#)

In the following table, the Percentiles column shows the percent sidechain outliers of the chain as a percentile score with respect to all X-ray entries followed by that with respect to entries of similar resolution.

The Analysed column shows the number of residues for which the sidechain conformation was analysed, and the total number of residues.

Mol	Chain	Analysed	Rotameric	Outliers	Percentiles	
1	A	297/303 (98%)	290 (98%)	7 (2%)	49	36
1	B	299/303 (99%)	291 (97%)	8 (3%)	44	31
1	C	302/303 (100%)	293 (97%)	9 (3%)	41	27
All	All	898/909 (99%)	874 (97%)	24 (3%)	44	31

All (24) residues with a non-rotameric sidechain are listed below:

Mol	Chain	Res	Type
1	A	112	MET
1	A	159	LYS
1	A	160	SER
1	A	166	GLN
1	A	193	GLU
1	A	210	ASN
1	A	222	LYS
1	B	2	GLU
1	B	112	MET
1	B	159	LYS
1	B	210	ASN
1	B	255	ARG
1	B	256	ASN
1	B	302	LEU
1	B	325	LYS
1	C	68	ARG
1	C	112	MET
1	C	153	SER
1	C	154	LYS
1	C	155	GLU
1	C	159	LYS
1	C	160	SER
1	C	252	LYS
1	C	268	LYS

Some sidechains can be flipped to improve hydrogen bonding and reduce clashes. All (27) such sidechains are listed below:

Mol	Chain	Res	Type
1	A	7	GLN
1	A	31	GLN
1	A	117	GLN
1	A	121	HIS
1	A	166	GLN
1	A	177	ASN
1	A	209	ASN
1	A	256	ASN
1	A	318	GLN
1	B	117	GLN
1	B	177	ASN
1	B	209	ASN
1	B	210	ASN

*Continued on next page...*

*Continued from previous page...*

Mol	Chain	Res	Type
1	B	225	HIS
1	B	256	ASN
1	B	318	GLN
1	C	31	GLN
1	C	177	ASN
1	C	208	HIS
1	C	209	ASN
1	C	240	ASN
1	C	256	ASN
1	C	293	GLN
1	C	318	GLN
1	C	329	HIS
1	C	330	HIS
1	C	331	HIS

### 5.3.3 RNA [i](#)

There are no RNA molecules in this entry.

## 5.4 Non-standard residues in protein, DNA, RNA chains [i](#)

There are no non-standard protein/DNA/RNA residues in this entry.

## 5.5 Carbohydrates [i](#)

There are no carbohydrates in this entry.

## 5.6 Ligand geometry [i](#)

10 ligands are modelled in this entry.

In the following table, the Counts columns list the number of bonds (or angles) for which Mogul statistics could be retrieved, the number of bonds (or angles) that are observed in the model and the number of bonds (or angles) that are defined in the Chemical Component Dictionary. The Link column lists molecule types, if any, to which the group is linked. The Z score for a bond length (or angle) is the number of standard deviations the observed value is removed from the expected value. A bond length (or angle) with  $|Z| > 2$  is considered an outlier worth inspection. RMSZ is the root-mean-square of all Z scores of the bond lengths (or angles).

Mol	Type	Chain	Res	Link	Bond lengths			Bond angles		
					Counts	RMSZ	# Z  > 2	Counts	RMSZ	# Z  > 2
2	SAM	A	801	-	21,29,29	1.08	2 (9%)	18,42,42	1.75	3 (16%)
3	BME	A	804	1	3,3,3	0.25	0	1,2,2	2.24	1 (100%)
3	BME	B	808	1	3,3,3	0.27	0	1,2,2	0.01	0
3	BME	B	805	1	3,3,3	0.16	0	1,2,2	1.50	0
3	BME	A	807	1	3,3,3	0.33	0	1,2,2	0.64	0
3	BME	C	809	-	3,3,3	0.38	0	1,2,2	0.12	0
2	SAM	C	803	-	21,29,29	1.19	2 (9%)	18,42,42	1.67	2 (11%)
3	BME	C	806	1	3,3,3	0.41	0	1,2,2	1.19	0
4	SO4	C	335	-	4,4,4	0.21	0	6,6,6	0.23	0
2	SAM	B	802	-	21,29,29	1.13	2 (9%)	18,42,42	1.68	2 (11%)

In the following table, the Chirals column lists the number of chiral outliers, the number of chiral centers analysed, the number of these observed in the model and the number defined in the Chemical Component Dictionary. Similar counts are reported in the Torsion and Rings columns. '-' means no outliers of that kind were identified.

Mol	Type	Chain	Res	Link	Chirals	Torsions	Rings
2	SAM	A	801	-	-	1/8/33/33	0/3/3/3
3	BME	A	804	1	-	0/1/1/1	-
3	BME	B	808	1	-	0/1/1/1	-
3	BME	B	805	1	-	0/1/1/1	-
3	BME	A	807	1	-	0/1/1/1	-
3	BME	C	809	-	-	0/1/1/1	-
2	SAM	C	803	-	-	2/8/33/33	0/3/3/3
3	BME	C	806	1	-	0/1/1/1	-
2	SAM	B	802	-	-	1/8/33/33	0/3/3/3

All (6) bond length outliers are listed below:

Mol	Chain	Res	Type	Atoms	Z	Observed(Å)	Ideal(Å)
2	B	802	SAM	C2-N3	4.00	1.38	1.32
2	C	803	SAM	C2-N3	3.37	1.37	1.32
2	A	801	SAM	C2-N3	3.17	1.37	1.32
2	C	803	SAM	C2-N1	2.87	1.39	1.33
2	A	801	SAM	C2-N1	2.74	1.39	1.33
2	B	802	SAM	C2-N1	2.14	1.37	1.33

All (8) bond angle outliers are listed below:

Mol	Chain	Res	Type	Atoms	Z	Observed(°)	Ideal(°)
2	A	801	SAM	N3-C2-N1	-5.69	119.78	128.68

*Continued on next page...*

*Continued from previous page...*

Mol	Chain	Res	Type	Atoms	Z	Observed(°)	Ideal(°)
2	C	803	SAM	N3-C2-N1	-5.65	119.85	128.68
2	B	802	SAM	N3-C2-N1	-5.51	120.07	128.68
2	B	802	SAM	C4-C5-N7	-2.61	106.68	109.40
2	A	801	SAM	O4'-C1'-C2'	-2.27	103.61	106.93
2	A	801	SAM	C2-N1-C6	2.25	122.61	118.75
3	A	804	BME	O1-C1-C2	-2.24	101.98	110.83
2	C	803	SAM	O4'-C1'-C2'	-2.04	103.95	106.93

There are no chirality outliers.

All (4) torsion outliers are listed below:

Mol	Chain	Res	Type	Atoms
2	A	801	SAM	CB-CG-SD-C5'
2	C	803	SAM	CB-CG-SD-C5'
2	B	802	SAM	CB-CG-SD-C5'
2	C	803	SAM	CB-CG-SD-CE

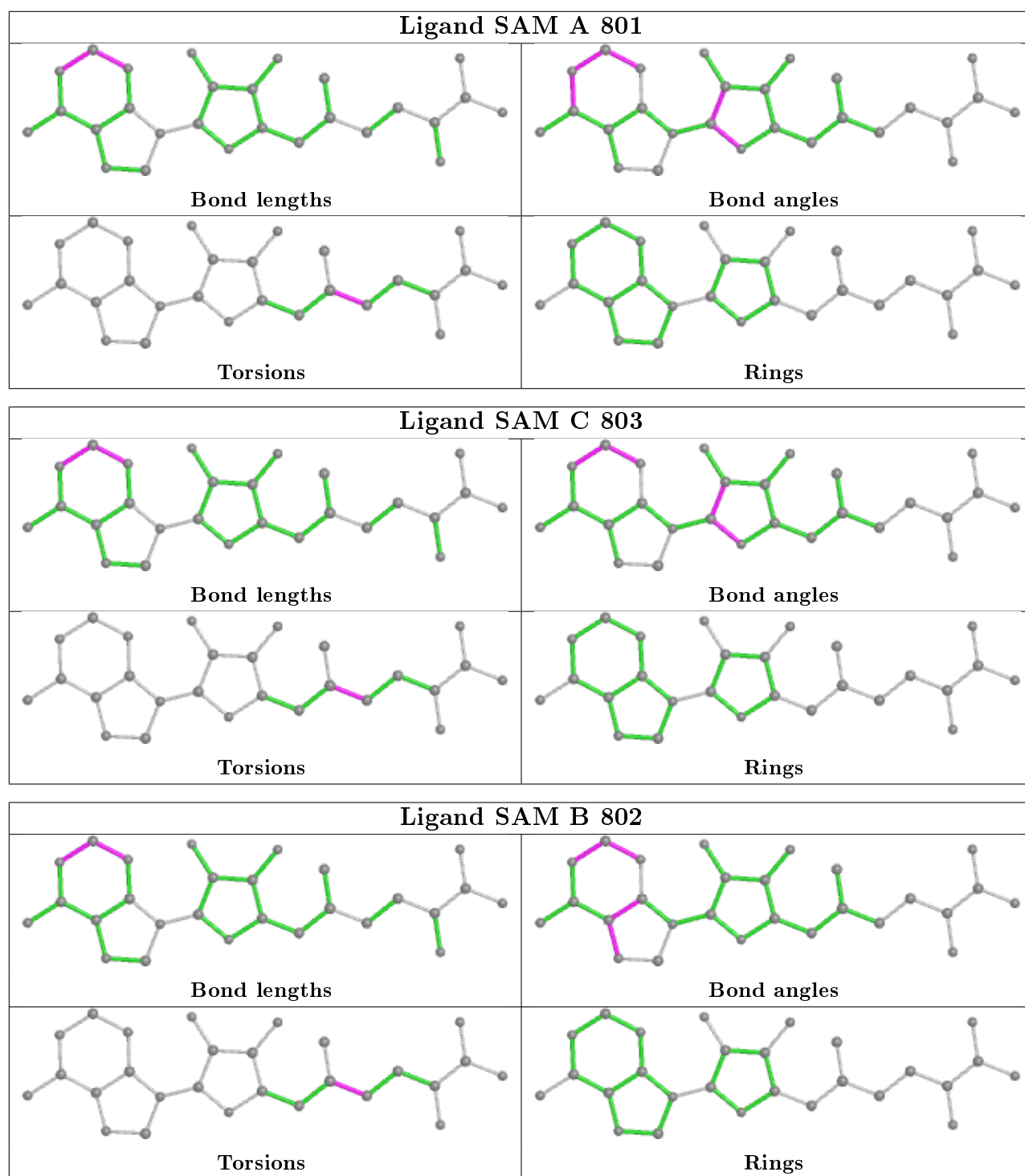
There are no ring outliers.

3 monomers are involved in 3 short contacts:

Mol	Chain	Res	Type	Clashes	Symm-Clashes
3	B	805	BME	1	0
3	C	806	BME	1	0
4	C	335	SO4	1	0

The following is a two-dimensional graphical depiction of Mogul quality analysis of bond lengths, bond angles, torsion angles, and ring geometry for all instances of the Ligand of Interest. In addition, ligands with molecular weight > 250 and outliers as shown on the validation Tables will also be included. For torsion angles, if less than 5% of the Mogul distribution of torsion angles is within 10 degrees of the torsion angle in question, then that torsion angle is considered an outlier. Any bond that is central to one or more torsion angles identified as an outlier by Mogul will be highlighted in the graph. For rings, the root-mean-square deviation (RMSD) between the ring in question and similar rings identified by Mogul is calculated over all ring torsion angles. If the average RMSD is greater than 60 degrees and the minimal RMSD between the ring in question and any Mogul-identified rings is also greater than 60 degrees, then that ring is considered an outlier. The outliers are highlighted in purple. The color gray indicates Mogul did not find sufficient equivalents in the CSD to analyse the geometry.





## 5.7 Other polymers [\(i\)](#)

There are no such residues in this entry.

## 5.8 Polymer linkage issues

There are no chain breaks in this entry.

## 6 Fit of model and data

### 6.1 Protein, DNA and RNA chains

In the following table, the column labelled ‘#RSRZ> 2’ contains the number (and percentage) of RSRZ outliers, followed by percent RSRZ outliers for the chain as percentile scores relative to all X-ray entries and entries of similar resolution. The OWAB column contains the minimum, median, 95<sup>th</sup> percentile and maximum values of the occupancy-weighted average B-factor per residue. The column labelled ‘Q< 0.9’ lists the number of (and percentage) of residues with an average occupancy less than 0.9.

Mol	Chain	Analysed	<RSRZ>	#RSRZ>2	OWAB(Å <sup>2</sup> )	Q<0.9
1	A	328/334 (98%)	-0.31	5 (1%) 73 70	5, 10, 26, 39	0
1	B	329/334 (98%)	-0.19	15 (4%) 32 26	5, 11, 32, 43	0
1	C	333/334 (99%)	-0.03	18 (5%) 25 20	9, 17, 39, 50	0
All	All	990/1002 (98%)	-0.18	38 (3%) 40 35	5, 13, 33, 50	0

All (38) RSRZ outliers are listed below:

Mol	Chain	Res	Type	RSRZ
1	B	239	PRO	5.4
1	B	155	GLU	4.2
1	C	240	ASN	4.1
1	C	334	HIS	4.1
1	B	156	ASP	4.0
1	A	239	PRO	3.9
1	C	253	GLU	3.7
1	C	159	LYS	3.7
1	B	159	LYS	3.6
1	C	167	GLY	3.4
1	C	157	THR	3.4
1	C	255	ARG	3.3
1	B	154	LYS	3.3
1	C	242	ARG	3.2
1	B	253	GLU	3.1
1	C	333	HIS	3.1
1	B	3	ARG	3.1
1	C	155	GLU	3.1
1	A	253	GLU	2.9
1	C	193	GLU	2.8
1	B	68	ARG	2.7
1	C	3	ARG	2.7
1	B	153	SER	2.7

*Continued on next page...*

*Continued from previous page...*

Mol	Chain	Res	Type	RSRZ
1	C	154	LYS	2.7
1	B	238	GLN	2.6
1	B	240	ASN	2.4
1	A	255	ARG	2.4
1	C	332	HIS	2.4
1	C	245	ALA	2.3
1	C	254	SER	2.3
1	A	237	SER	2.2
1	C	97	GLU	2.2
1	B	57	ARG	2.1
1	C	2	GLU	2.1
1	B	330	HIS	2.1
1	A	3	ARG	2.1
1	B	255	ARG	2.1
1	B	157	THR	2.0

## 6.2 Non-standard residues in protein, DNA, RNA chains [i](#)

There are no non-standard protein/DNA/RNA residues in this entry.

## 6.3 Carbohydrates [i](#)

There are no carbohydrates in this entry.

## 6.4 Ligands [i](#)

In the following table, the Atoms column lists the number of modelled atoms in the group and the number defined in the chemical component dictionary. The B-factors column lists the minimum, median, 95<sup>th</sup> percentile and maximum values of B factors of atoms in the group. The column labelled 'Q< 0.9' lists the number of atoms with occupancy less than 0.9.

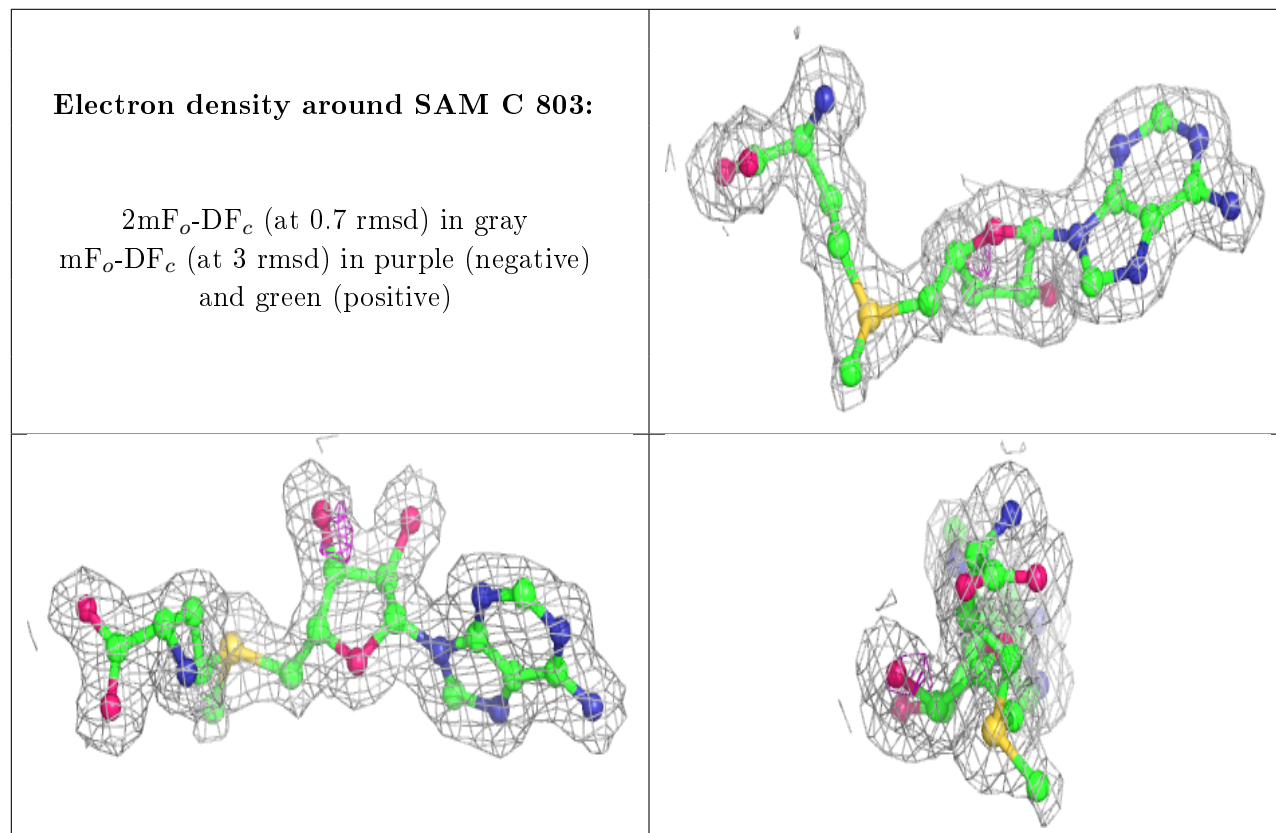
Mol	Type	Chain	Res	Atoms	RSCC	RSR	B-factors(Å <sup>2</sup> )	Q<0.9
3	BME	C	809	4/4	0.80	0.23	39,40,40,42	0
3	BME	B	808	4/4	0.91	0.21	35,37,37,38	0
3	BME	B	805	4/4	0.94	0.13	13,18,20,26	0
3	BME	A	804	4/4	0.94	0.15	13,20,20,28	0
3	BME	A	807	4/4	0.96	0.33	29,31,32,34	0
4	SO4	C	335	5/5	0.96	0.15	22,23,23,24	0
3	BME	C	806	4/4	0.97	0.17	24,30,32,36	0
2	SAM	C	803	27/27	0.97	0.08	8,12,14,17	0

*Continued on next page...*

Continued from previous page...

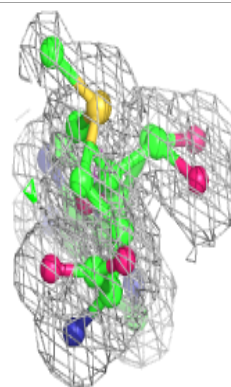
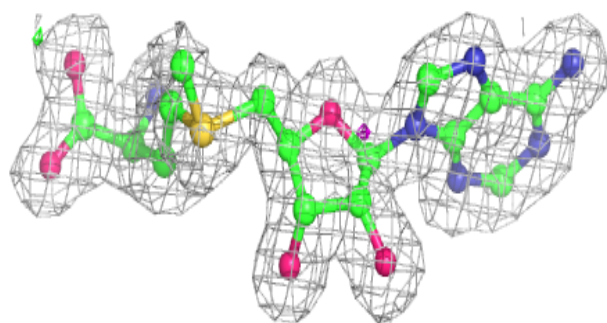
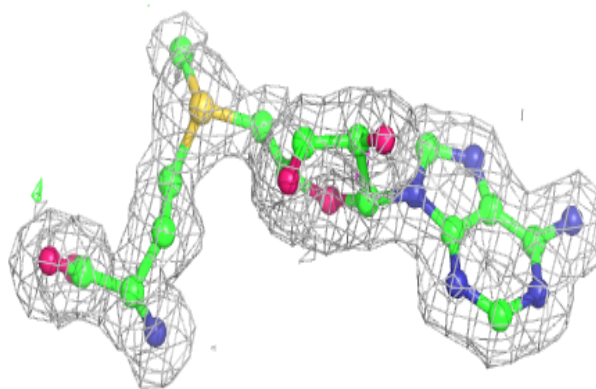
Mol	Type	Chain	Res	Atoms	RSCC	RSR	B-factors( $\text{\AA}^2$ )	Q<0.9
2	SAM	A	801	27/27	0.98	0.08	4,6,7,10	0
2	SAM	B	802	27/27	0.99	0.06	5,7,8,10	0

The following is a graphical depiction of the model fit to experimental electron density of all instances of the Ligand of Interest. In addition, ligands with molecular weight > 250 and outliers as shown on the geometry validation Tables will also be included. Each fit is shown from different orientation to approximate a three-dimensional view.

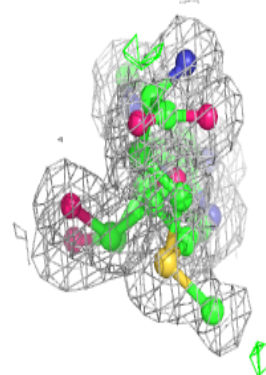
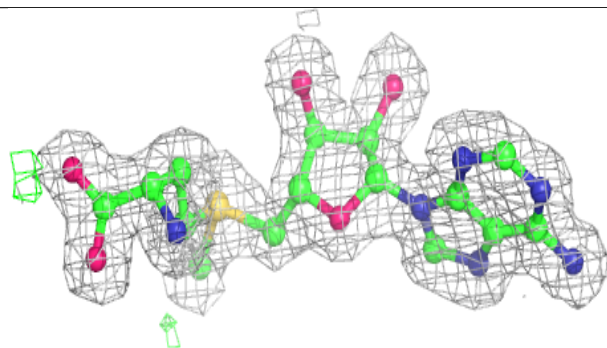
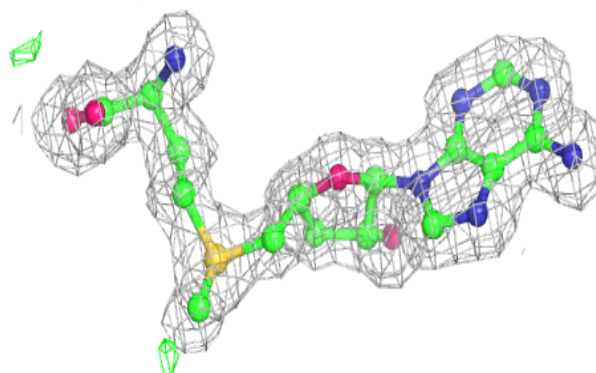


**Electron density around SAM A 801:**

$2mF_o-DF_c$  (at 0.7 rmsd) in gray  
 $mF_o-DF_c$  (at 3 rmsd) in purple (negative)  
and green (positive)

**Electron density around SAM B 802:**

$2mF_o-DF_c$  (at 0.7 rmsd) in gray  
 $mF_o-DF_c$  (at 3 rmsd) in purple (negative)  
and green (positive)



## 6.5 Other polymers

There are no such residues in this entry.