



# Full wwPDB X-ray Structure Validation Report ⓘ

Dec 10, 2023 – 09:19 am GMT

PDB ID : 1O7Q  
Title : Roles of Individual Residues of Alpha-1,3 Galactosyltransferases in Substrate Binding and Catalysis  
Authors : Zhang, Y.; Swaminathan, G.J.; Deshpande, A.; Natesh, R.; Xie, Z.; Acharya, K.R.; Brew, K.  
Deposited on : 2002-11-12  
Resolution : 1.30 Å(reported)

This is a Full wwPDB X-ray Structure Validation Report for a publicly released PDB entry.

We welcome your comments at [validation@mail.wwpdb.org](mailto:validation@mail.wwpdb.org)

A user guide is available at

<https://www.wwpdb.org/validation/2017/XrayValidationReportHelp>

with specific help available everywhere you see the ⓘ symbol.

The types of validation reports are described at

<http://www.wwpdb.org/validation/2017/FAQs#types>.

---

The following versions of software and data (see [references ⓘ](#)) were used in the production of this report:

MolProbity : 4.02b-467  
Mogul : 1.8.4, CSD as541be (2020)  
Xtrriage (Phenix) : **NOT EXECUTED**  
EDS : **NOT EXECUTED**  
buster-report : 1.1.7 (2018)  
Percentile statistics : 20191225.v01 (using entries in the PDB archive December 25th 2019)  
Ideal geometry (proteins) : Engh & Huber (2001)  
Ideal geometry (DNA, RNA) : Parkinson et al. (1996)  
Validation Pipeline (wwPDB-VP) : 2.36

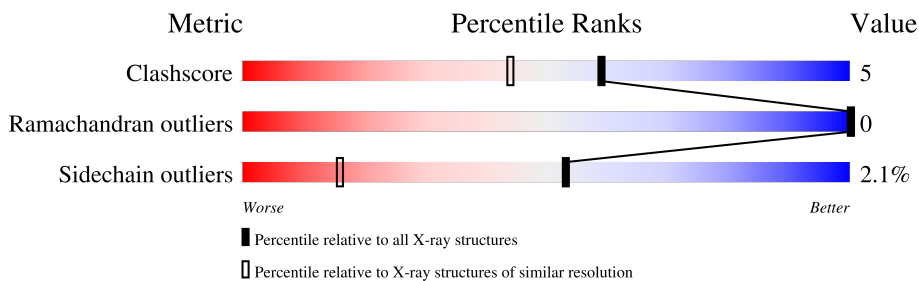
# 1 Overall quality at a glance i

The following experimental techniques were used to determine the structure:

*X-RAY DIFFRACTION*

The reported resolution of this entry is 1.30 Å.

Percentile scores (ranging between 0-100) for global validation metrics of the entry are shown in the following graphic. The table shows the number of entries on which the scores are based.



Metric	Whole archive (#Entries)	Similar resolution (#Entries, resolution range(Å))
Clashscore	141614	1101 (1.30-1.30)
Ramachandran outliers	138981	1058 (1.30-1.30)
Sidechain outliers	138945	1058 (1.30-1.30)

The table below summarises the geometric issues observed across the polymeric chains and their fit to the electron density. The red, orange, yellow and green segments of the lower bar indicate the fraction of residues that contain outliers for  $\geq 3$ , 2, 1 and 0 types of geometric quality criteria respectively. A grey segment represents the fraction of residues that are not modelled. The numeric value for each fraction is indicated below the corresponding segment, with a dot representing fractions  $\leq 5\%$ .

Note EDS was not executed.

Mol	Chain	Length	Quality of chain
1	A	289	89% 8% ...
1	B	289	91% 7% ..
2	C	2	50% 50%
2	D	2	50% 50%

The following table lists non-polymeric compounds, carbohydrate monomers and non-standard residues in protein, DNA, RNA chains that are outliers for geometric or electron-density-fit criteria:

Mol	Type	Chain	Res	Chirality	Geometry	Clashes	Electron density
3	GOL	B	1378	-	X	X	-
3	GOL	B	1379	-	X	-	-
5	UDP	A	1375	-	-	X	-

## 2 Entry composition [i](#)

There are 6 unique types of molecules in this entry. The entry contains 10790 atoms, of which 4791 are hydrogens and 0 are deuteriums.

In the tables below, the ZeroOcc column contains the number of atoms modelled with zero occupancy, the AltConf column contains the number of residues with at least one atom in alternate conformation and the Trace column contains the number of residues modelled with at most 2 atoms.

- Molecule 1 is a protein called N-ACETYLLACTOSAMINIDE ALPHA-1,3-GALACTOSYL TRANSFERASE.

Mol	Chain	Residues	Atoms						ZeroOcc	AltConf	Trace
			Total	C	H	N	O	S			
1	A	287	4823	1592	2394	397	424	16	0	10	0
1	B	287	4831	1596	2397	395	427	16	0	11	0

- Molecule 2 is an oligosaccharide called beta-D-galactopyranose-(1-4)-2-acetamido-2-deoxy-beta-D-glucopyranose.



Mol	Chain	Residues	Atoms				ZeroOcc	AltConf	Trace
			Total	C	N	O			
2	C	2	26	14	1	11	0	0	0
2	D	2	26	14	1	11	0	0	0

- Molecule 3 is GLYCEROL (three-letter code: GOL) (formula: C<sub>3</sub>H<sub>8</sub>O<sub>3</sub>).

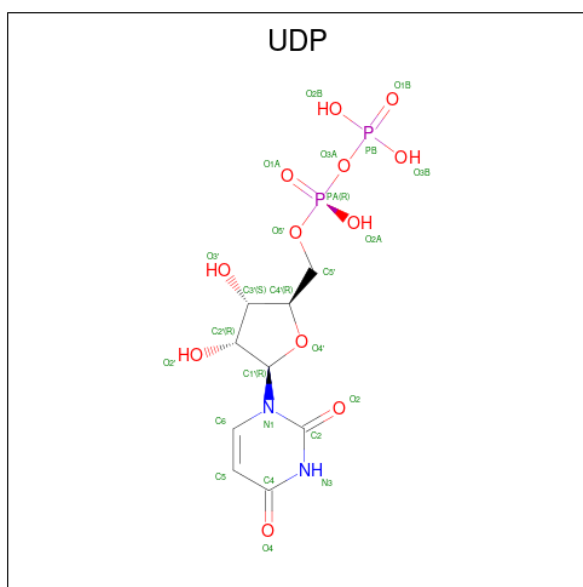


Mol	Chain	Residues	Atoms	ZeroOcc	AltConf
3	A	1	Total C O 6 3 3	0	0
3	A	1	Total C O 6 3 3	0	0
3	B	1	Total C O 6 3 3	0	0
3	B	1	Total C O 6 3 3	0	0
3	B	1	Total C O 6 3 3	0	0

- Molecule 4 is MANGANESE (II) ION (three-letter code: MN) (formula: Mn).

Mol	Chain	Residues	Atoms	ZeroOcc	AltConf
4	A	1	Total Mn 1 1	0	0
4	B	1	Total Mn 1 1	0	0

- Molecule 5 is URIDINE-5'-DIPHOSPHATE (three-letter code: UDP) (formula: C<sub>9</sub>H<sub>14</sub>N<sub>2</sub>O<sub>12</sub>P<sub>2</sub>).



Mol	Chain	Residues	Atoms					ZeroOcc	AltConf
5	A	1	Total	C	N	O	P	0	0
			25	9	2	12	2		
5	A	1	Total	C	N	O	P	0	0
			25	9	2	12	2		
5	B	1	Total	C	N	O	P	0	0
			25	9	2	12	2		
5	B	1	Total	C	N	O	P	0	0
			25	9	2	12	2		

- Molecule 6 is water.

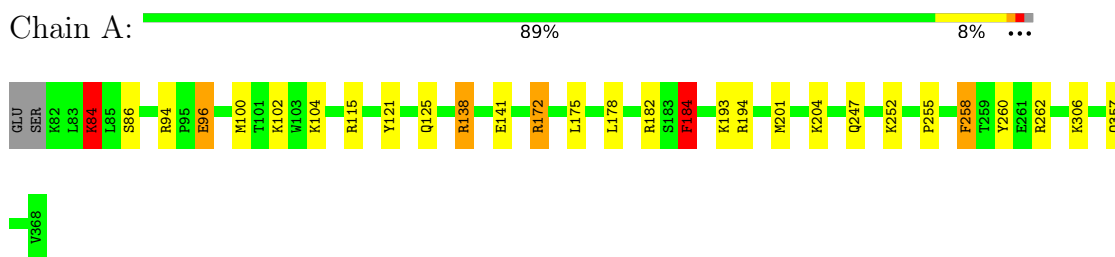
Mol	Chain	Residues	Atoms		ZeroOcc	AltConf
6	A	468	Total	O	0	0
			468	468		
6	B	484	Total	O	0	0
			484	484		

### 3 Residue-property plots [i](#)

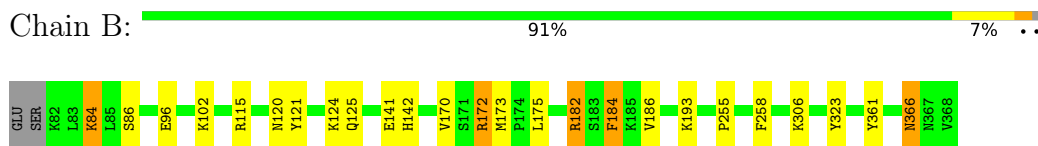
These plots are drawn for all protein, RNA, DNA and oligosaccharide chains in the entry. The first graphic for a chain summarises the proportions of the various outlier classes displayed in the second graphic. The second graphic shows the sequence view annotated by issues in geometry. Residues are color-coded according to the number of geometric quality criteria for which they contain at least one outlier: green = 0, yellow = 1, orange = 2 and red = 3 or more. Stretches of 2 or more consecutive residues without any outlier are shown as a green connector. Residues present in the sample, but not in the model, are shown in grey.

Note EDS was not executed.

- Molecule 1: N-ACETYLLACTOSAMINIDE ALPHA-1,3-GALACTOSYLTRANSFERAS E



- Molecule 1: N-ACETYLLACTOSAMINIDE ALPHA-1,3-GALACTOSYLTRANSFERAS E



- Molecule 2: beta-D-galactopyranose-(1-4)-2-acetamido-2-deoxy-beta-D-glucopyranose



- Molecule 2: beta-D-galactopyranose-(1-4)-2-acetamido-2-deoxy-beta-D-glucopyranose



## 4 Data and refinement statistics

Xtrriage (Phenix) and EDS were not executed - this section is therefore incomplete.

Property	Value	Source
Space group	P 1 21 1	Depositor
Cell constants a, b, c, $\alpha$ , $\beta$ , $\gamma$	45.33Å 94.68Å 95.01Å 90.00° 99.03° 90.00°	Depositor
Resolution (Å)	40.00 – 1.30	Depositor
% Data completeness (in resolution range)	94.9 (40.00-1.30)	Depositor
$R_{merge}$	(Not available)	Depositor
$R_{sym}$	(Not available)	Depositor
Refinement program	SHELXL-97	Depositor
R, $R_{free}$	0.116 , 0.154	Depositor
Estimated twinning fraction	No twinning to report.	Xtrriage
Total number of atoms	10790	wwPDB-VP
Average B, all atoms (Å <sup>2</sup> )	14.0	wwPDB-VP



## 5 Model quality [i](#)

### 5.1 Standard geometry [i](#)

Bond lengths and bond angles in the following residue types are not validated in this section: NAG, MN, GAL, UDP, GOL

The Z score for a bond length (or angle) is the number of standard deviations the observed value is removed from the expected value. A bond length (or angle) with  $|Z| > 5$  is considered an outlier worth inspection. RMSZ is the root-mean-square of all Z scores of the bond lengths (or angles).

Mol	Chain	Bond lengths		Bond angles	
		RMSZ	# Z  >5	RMSZ	# Z  >5
1	A	0.64	2/2544 (0.1%)	1.10	17/3444 (0.5%)
1	B	0.59	0/2554	1.09	9/3457 (0.3%)
All	All	0.62	2/5098 (0.0%)	1.10	26/6901 (0.4%)

All (2) bond length outliers are listed below:

Mol	Chain	Res	Type	Atoms	Z	Observed(Å)	Ideal(Å)
1	A	96	GLU	CD-OE1	-9.08	1.15	1.25
1	A	96	GLU	CD-OE2	-6.41	1.18	1.25

All (26) bond angle outliers are listed below:

Mol	Chain	Res	Type	Atoms	Z	Observed(°)	Ideal(°)
1	B	182	ARG	NE-CZ-NH2	9.31	124.95	120.30
1	B	184[A]	PHE	CB-CG-CD1	-9.20	114.36	120.80
1	B	184[B]	PHE	CB-CG-CD1	-9.20	114.36	120.80
1	A	96	GLU	OE1-CD-OE2	-8.86	112.67	123.30
1	B	323	TYR	CB-CG-CD1	8.73	126.24	121.00
1	A	260	TYR	CB-CG-CD2	6.93	125.16	121.00
1	A	184[A]	PHE	CB-CG-CD1	-6.89	115.98	120.80
1	A	184[B]	PHE	CB-CG-CD1	-6.89	115.98	120.80
1	A	138[A]	ARG	CD-NE-CZ	6.57	132.80	123.60
1	A	138[B]	ARG	CD-NE-CZ	6.57	132.80	123.60
1	A	94	ARG	NE-CZ-NH2	-6.54	117.03	120.30
1	A	96	GLU	CG-CD-OE2	6.44	131.19	118.30
1	A	115	ARG	NE-CZ-NH1	6.34	123.47	120.30
1	A	141	GLU	OE1-CD-OE2	-6.28	115.76	123.30
1	A	84	LYS	CD-CE-NZ	6.22	126.00	111.70
1	B	96	GLU	CB-CG-CD	6.05	130.55	114.20
1	B	115	ARG	NE-CZ-NH1	5.82	123.21	120.30

*Continued on next page...*

Continued from previous page...

Mol	Chain	Res	Type	Atoms	Z	Observed(°)	Ideal(°)
1	A	194	ARG	CD-NE-CZ	5.54	131.35	123.60
1	A	258	PHE	CB-CG-CD2	5.49	124.64	120.80
1	B	361	TYR	CB-CG-CD2	5.39	124.23	121.00
1	A	138[A]	ARG	NE-CZ-NH2	5.18	122.89	120.30
1	A	138[B]	ARG	NE-CZ-NH2	5.18	122.89	120.30
1	A	172	ARG	CA-CB-CG	-5.15	102.08	113.40
1	B	366	ASN	CA-CB-CG	-5.12	102.13	113.40
1	B	172	ARG	NE-CZ-NH1	5.12	122.86	120.30
1	A	172	ARG	CD-NE-CZ	5.05	130.67	123.60

There are no chirality outliers.

There are no planarity outliers.

## 5.2 Too-close contacts

In the following table, the Non-H and H(model) columns list the number of non-hydrogen atoms and hydrogen atoms in the chain respectively. The H(added) column lists the number of hydrogen atoms added and optimized by MolProbity. The Clashes column lists the number of clashes within the asymmetric unit, whereas Symm-Clashes lists symmetry-related clashes.

Mol	Chain	Non-H	H(model)	H(added)	Clashes	Symm-Clashes
1	A	2429	2394	2389	18	0
1	B	2434	2397	2392	15	0
2	C	26	0	24	0	0
2	D	26	0	24	0	0
3	A	12	0	16	1	0
3	B	18	0	19	5	0
4	A	1	0	0	0	0
4	B	1	0	0	0	0
5	A	50	0	22	10	0
5	B	50	0	22	4	0
6	A	468	0	0	8	0
6	B	484	0	0	7	0
All	All	5999	4791	4908	47	0

The all-atom clashscore is defined as the number of clashes found per 1000 atoms (including hydrogen atoms). The all-atom clashscore for this structure is 5.

All (47) close contacts within the same asymmetric unit are listed below, sorted by their clash magnitude.

Atom-1	Atom-2	Interatomic distance (Å)	Clash overlap (Å)
5:A:1375:UDP:C5'	5:A:1375:UDP:H6	1.84	0.91
5:A:1375:UDP:C6	5:A:1375:UDP:O5'	2.34	0.80
5:A:1375:UDP:C5'	5:A:1375:UDP:C6	2.68	0.77
3:B:1378:GOL:H11	6:B:2009:HOH:O	1.85	0.76
5:A:1375:UDP:C6	5:A:1375:UDP:H3'	2.23	0.74
1:B:86:SER:HB3	3:B:1378:GOL:H12	1.69	0.73
5:A:1375:UDP:H6	5:A:1375:UDP:H5'2	1.55	0.70
1:A:100[A]:MET:HG3	6:A:2045:HOH:O	1.91	0.70
1:A:102:LYS:HE3	6:A:2333:HOH:O	1.92	0.70
5:A:1375:UDP:C6	5:A:1375:UDP:C3'	2.76	0.69
1:B:141:GLU:OE2	1:B:172:ARG:HD2	1.94	0.68
1:A:84:LYS:HD3	1:A:86[A]:SER:OG	1.94	0.68
5:B:1377:UDP:H6	5:B:1377:UDP:H3'	1.61	0.67
1:A:175:LEU:HB2	6:A:2170:HOH:O	1.95	0.65
3:B:1378:GOL:H31	6:B:2009:HOH:O	1.98	0.63
1:A:100[B]:MET:SD	1:A:104:LYS:HA	2.38	0.62
1:B:173[B]:MET:SD	1:B:186:VAL:HG21	2.43	0.58
5:A:1375:UDP:C6	5:A:1375:UDP:C4'	2.89	0.56
1:A:178:LEU:HD11	1:A:184[A]:PHE:CD1	2.41	0.56
1:B:306:LYS:HB3	5:B:1377:UDP:O3'	2.07	0.54
1:B:86:SER:HB3	3:B:1378:GOL:C1	2.37	0.54
5:B:1377:UDP:H3'	5:B:1377:UDP:C6	2.43	0.53
1:A:138[B]:ARG:HD3	6:A:2165:HOH:O	2.08	0.53
1:A:193:LYS:N	1:A:193:LYS:HD2	2.25	0.52
1:B:84:LYS:HG3	6:B:2002:HOH:O	2.10	0.52
5:A:1375:UDP:H6	5:A:1375:UDP:O5'	1.81	0.51
1:A:306:LYS:O	5:A:1375:UDP:O2'	2.29	0.51
1:B:120:ASN:O	1:B:124:LYS:HG3	2.11	0.50
1:A:255:PRO:HA	1:A:258:PHE:CD1	2.48	0.48
1:B:84:LYS:HD3	1:B:86:SER:OG	2.14	0.47
3:B:1379:GOL:H12	6:B:2482:HOH:O	2.14	0.47
1:A:172:ARG:NH2	6:A:2165:HOH:O	2.48	0.46
1:A:201[A]:MET:HE2	6:A:2222:HOH:O	2.15	0.46
1:B:121:TYR:O	1:B:125:GLN:HG3	2.16	0.46
1:B:142:HIS:HD2	6:B:2100:HOH:O	1.97	0.46
1:A:262:ARG:O	3:A:1370:GOL:H11	2.15	0.46
1:A:121:TYR:O	1:A:125:GLN:HG3	2.16	0.46
1:B:193:LYS:NZ	6:B:2221:HOH:O	2.49	0.45
5:A:1375:UDP:O5'	5:A:1375:UDP:C5	2.70	0.44
5:B:1377:UDP:C6	5:B:1377:UDP:C3'	3.01	0.44
1:A:138[A]:ARG:HG2	6:A:2443:HOH:O	2.17	0.43
1:A:204:LYS:HE2	6:A:2241:HOH:O	2.17	0.43

*Continued on next page...*

Continued from previous page...

Atom-1	Atom-2	Interatomic distance (Å)	Clash overlap (Å)
1:A:175:LEU:HD21	1:B:175:LEU:HD21	1.99	0.43
1:B:255:PRO:HA	1:B:258:PHE:CD1	2.53	0.43
1:B:120:ASN:ND2	6:B:2059:HOH:O	2.51	0.42
1:B:170:VAL:O	1:B:170:VAL:HG12	2.20	0.41
1:A:96:GLU:H	1:A:96:GLU:CD	2.25	0.40

There are no symmetry-related clashes.

### 5.3 Torsion angles [i](#)

#### 5.3.1 Protein backbone [i](#)

In the following table, the Percentiles column shows the percent Ramachandran outliers of the chain as a percentile score with respect to all X-ray entries followed by that with respect to entries of similar resolution.

The Analysed column shows the number of residues for which the backbone conformation was analysed, and the total number of residues.

Mol	Chain	Analysed	Favoured	Allowed	Outliers	Percentiles	
1	A	295/289 (102%)	289 (98%)	6 (2%)	0	100	100
1	B	296/289 (102%)	290 (98%)	6 (2%)	0	100	100
All	All	591/578 (102%)	579 (98%)	12 (2%)	0	100	100

There are no Ramachandran outliers to report.

#### 5.3.2 Protein sidechains [i](#)

In the following table, the Percentiles column shows the percent sidechain outliers of the chain as a percentile score with respect to all X-ray entries followed by that with respect to entries of similar resolution.

The Analysed column shows the number of residues for which the sidechain conformation was analysed, and the total number of residues.

Mol	Chain	Analysed	Rotameric	Outliers	Percentiles	
1	A	267/260 (103%)	260 (97%)	7 (3%)	46	10
1	B	268/260 (103%)	262 (98%)	6 (2%)	52	15
All	All	535/520 (103%)	522 (98%)	13 (2%)	53	12

All (13) residues with a non-rotameric sidechain are listed below:

Mol	Chain	Res	Type
1	A	84	LYS
1	A	182	ARG
1	A	184[A]	PHE
1	A	184[B]	PHE
1	A	247	GLN
1	A	252	LYS
1	A	357	GLN
1	B	84	LYS
1	B	102	LYS
1	B	182	ARG
1	B	184[A]	PHE
1	B	184[B]	PHE
1	B	366	ASN

Sometimes sidechains can be flipped to improve hydrogen bonding and reduce clashes. All (6) such sidechains are listed below:

Mol	Chain	Res	Type
1	A	296	GLN
1	A	313	GLN
1	A	357	GLN
1	B	231	GLN
1	B	296	GLN
1	B	313	GLN

### 5.3.3 RNA [i](#)

There are no RNA molecules in this entry.

### 5.4 Non-standard residues in protein, DNA, RNA chains [i](#)

There are no non-standard protein/DNA/RNA residues in this entry.

### 5.5 Carbohydrates [i](#)

4 monosaccharides are modelled in this entry.

In the following table, the Counts columns list the number of bonds (or angles) for which Mogul statistics could be retrieved, the number of bonds (or angles) that are observed in the model and the number of bonds (or angles) that are defined in the Chemical Component Dictionary. The

Link column lists molecule types, if any, to which the group is linked. The Z score for a bond length (or angle) is the number of standard deviations the observed value is removed from the expected value. A bond length (or angle) with  $|Z| > 2$  is considered an outlier worth inspection. RMSZ is the root-mean-square of all Z scores of the bond lengths (or angles).

Mol	Type	Chain	Res	Link	Bond lengths			Bond angles		
					Counts	RMSZ	# Z  > 2	Counts	RMSZ	# Z  > 2
2	NAG	C	1	2	15,15,15	1.00	0	21,21,21	1.35	1 (4%)
2	GAL	C	2	2	11,11,12	0.88	0	15,15,17	0.70	0
2	NAG	D	1	2	15,15,15	1.45	2 (13%)	21,21,21	1.55	3 (14%)
2	GAL	D	2	2	11,11,12	0.85	0	15,15,17	0.83	0

In the following table, the Chirals column lists the number of chiral outliers, the number of chiral centers analysed, the number of these observed in the model and the number defined in the Chemical Component Dictionary. Similar counts are reported in the Torsion and Rings columns. '2' means no outliers of that kind were identified.

Mol	Type	Chain	Res	Link	Chirals	Torsions	Rings
2	NAG	C	1	2	-	0/6/26/26	0/1/1/1
2	GAL	C	2	2	-	0/2/19/22	0/1/1/1
2	NAG	D	1	2	-	0/6/26/26	0/1/1/1
2	GAL	D	2	2	-	0/2/19/22	0/1/1/1

All (2) bond length outliers are listed below:

Mol	Chain	Res	Type	Atoms	Z	Observed(Å)	Ideal(Å)
2	D	1	NAG	C1-C2	3.29	1.56	1.52
2	D	1	NAG	C2-N2	2.81	1.50	1.45

All (4) bond angle outliers are listed below:

Mol	Chain	Res	Type	Atoms	Z	Observed(°)	Ideal(°)
2	D	1	NAG	C1-C2-N2	-5.39	104.48	110.73
2	C	1	NAG	C1-C2-N2	-5.15	104.76	110.73
2	D	1	NAG	O5-C5-C4	-2.08	105.92	109.69
2	D	1	NAG	C4-C3-C2	-2.02	107.38	110.34

There are no chirality outliers.

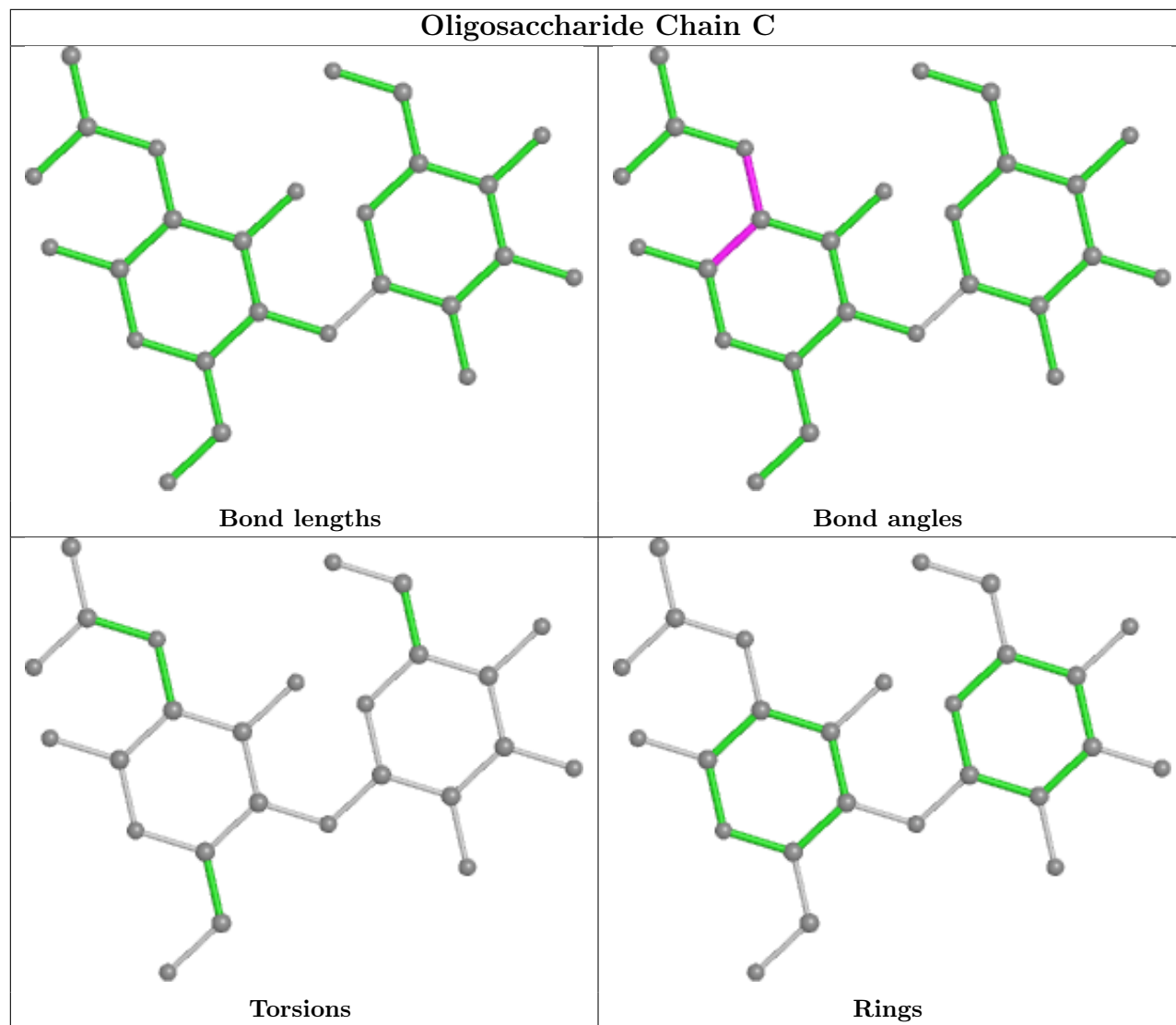
There are no torsion outliers.

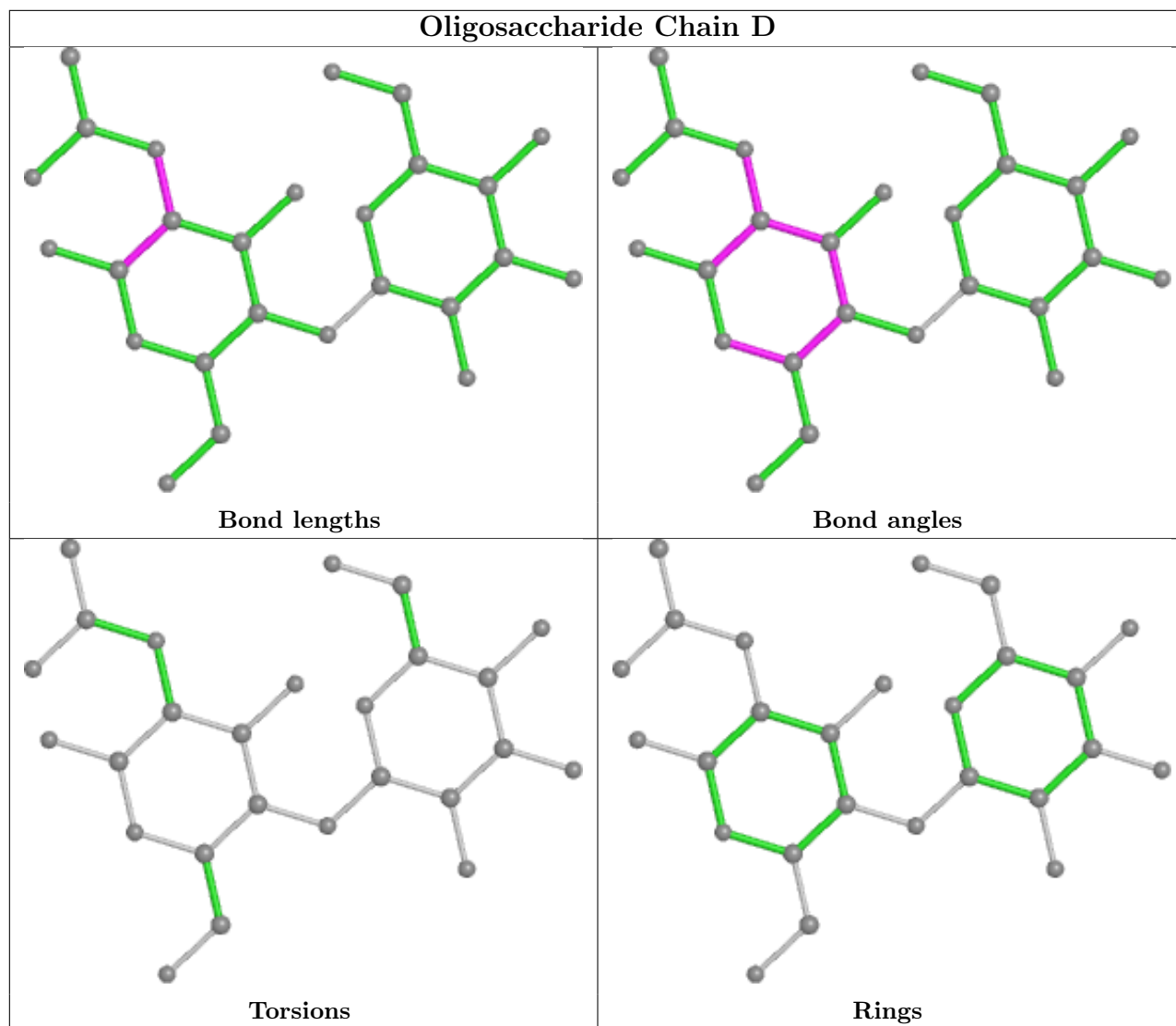
There are no ring outliers.

No monomer is involved in short contacts.

The following is a two-dimensional graphical depiction of Mogul quality analysis of bond lengths,

bond angles, torsion angles, and ring geometry for oligosaccharide.





## 5.6 Ligand geometry [i](#)

Of 11 ligands modelled in this entry, 2 are monoatomic - leaving 9 for Mogul analysis.

In the following table, the Counts columns list the number of bonds (or angles) for which Mogul statistics could be retrieved, the number of bonds (or angles) that are observed in the model and the number of bonds (or angles) that are defined in the Chemical Component Dictionary. The Link column lists molecule types, if any, to which the group is linked. The Z score for a bond length (or angle) is the number of standard deviations the observed value is removed from the expected value. A bond length (or angle) with  $|Z| > 2$  is considered an outlier worth inspection. RMSZ is the root-mean-square of all Z scores of the bond lengths (or angles).

Mol	Type	Chain	Res	Link	Bond lengths			Bond angles		
					Counts	RMSZ	# $ Z  > 2$	Counts	RMSZ	# $ Z  > 2$
5	UDP	B	1376	4	24,26,26	1.58	3 (12%)	37,40,40	1.01	2 (5%)
3	GOL	A	1369	-	5,5,5	0.45	0	5,5,5	0.84	0



Mol	Type	Chain	Res	Link	Bond lengths			Bond angles		
					Counts	RMSZ	# Z  > 2	Counts	RMSZ	# Z  > 2
5	UDP	A	1375	-	24,26,26	2.41	6 (25%)	37,40,40	1.93	8 (21%)
5	UDP	B	1377	-	24,26,26	2.67	5 (20%)	37,40,40	1.62	7 (18%)
3	GOL	A	1370	-	5,5,5	1.11	0	5,5,5	1.81	2 (40%)
3	GOL	B	1379	-	5,5,5	1.95	2 (40%)	5,5,5	3.56	2 (40%)
5	UDP	A	1374	4	24,26,26	1.42	2 (8%)	37,40,40	1.05	3 (8%)
3	GOL	B	1378	-	5,5,5	2.15	3 (60%)	5,5,5	3.48	2 (40%)
3	GOL	B	1372	-	5,5,5	0.37	0	5,5,5	0.93	0

In the following table, the Chirals column lists the number of chiral outliers, the number of chiral centers analysed, the number of these observed in the model and the number defined in the Chemical Component Dictionary. Similar counts are reported in the Torsion and Rings columns. '-' means no outliers of that kind were identified.

Mol	Type	Chain	Res	Link	Chirals	Torsions	Rings
5	UDP	B	1376	4	-	1/16/32/32	0/2/2/2
3	GOL	A	1369	-	-	0/4/4/4	-
5	UDP	A	1375	-	-	5/16/32/32	0/2/2/2
5	UDP	B	1377	-	-	8/16/32/32	0/2/2/2
3	GOL	A	1370	-	-	1/4/4/4	-
3	GOL	B	1379	-	-	3/4/4/4	-
5	UDP	A	1374	4	-	1/16/32/32	0/2/2/2
3	GOL	B	1378	-	-	3/4/4/4	-
3	GOL	B	1372	-	-	0/4/4/4	-

All (21) bond length outliers are listed below:

Mol	Chain	Res	Type	Atoms	Z	Observed(Å)	Ideal(Å)
5	B	1377	UDP	C6-C5	9.05	1.56	1.35
5	A	1375	UDP	C6-C5	7.56	1.52	1.35
5	B	1377	UDP	C5-C4	5.86	1.56	1.43
5	A	1375	UDP	C5-C4	5.18	1.55	1.43
5	B	1376	UDP	C6-C5	5.07	1.46	1.35
5	A	1374	UDP	C6-C5	4.49	1.45	1.35
5	A	1375	UDP	PB-O1B	3.90	1.63	1.50
5	B	1377	UDP	PB-O1B	3.88	1.63	1.50
5	B	1376	UDP	C5-C4	3.53	1.51	1.43
5	A	1374	UDP	C5-C4	3.51	1.51	1.43
5	B	1377	UDP	C6-N1	3.06	1.45	1.38
3	B	1379	GOL	C3-C2	-2.87	1.39	1.51
3	B	1379	GOL	O3-C3	-2.82	1.30	1.42

*Continued on next page...*

Continued from previous page...

Mol	Chain	Res	Type	Atoms	Z	Observed(Å)	Ideal(Å)
3	B	1378	GOL	O2-C2	-2.82	1.35	1.43
3	B	1378	GOL	C3-C2	-2.79	1.40	1.51
3	B	1378	GOL	O3-C3	-2.69	1.31	1.42
5	A	1375	UDP	C4-N3	2.51	1.43	1.38
5	B	1377	UDP	C5'-C4'	2.48	1.59	1.51
5	A	1375	UDP	C2-N1	2.29	1.42	1.38
5	B	1376	UDP	C4-N3	2.18	1.42	1.38
5	A	1375	UDP	C5'-C4'	2.15	1.58	1.51

All (26) bond angle outliers are listed below:

Mol	Chain	Res	Type	Atoms	Z	Observed(°)	Ideal(°)
3	B	1379	GOL	O3-C3-C2	6.62	141.96	110.20
5	A	1375	UDP	C6-C5-C4	-6.22	111.01	119.52
3	B	1378	GOL	O3-C3-C2	6.08	139.34	110.20
5	A	1375	UDP	O2-C2-N1	-5.23	115.83	122.79
5	B	1377	UDP	C6-C5-C4	-4.77	113.00	119.52
3	B	1378	GOL	O2-C2-C3	4.40	128.50	109.12
3	B	1379	GOL	O2-C2-C3	3.94	126.49	109.12
5	A	1375	UDP	C1'-N1-C2	-2.97	112.20	117.57
5	B	1377	UDP	C6-N1-C2	-2.95	117.22	120.99
5	A	1375	UDP	O3B-PB-O3A	2.91	114.40	104.64
5	A	1374	UDP	PA-O3A-PB	-2.86	123.01	132.83
3	A	1370	GOL	O2-C2-C3	2.82	121.55	109.12
5	B	1377	UDP	O3B-PB-O2B	2.71	117.99	107.64
5	B	1377	UDP	O4'-C1'-N1	2.54	114.17	108.36
5	B	1377	UDP	O4'-C4'-C3'	-2.47	100.23	105.11
5	A	1375	UDP	O3B-PB-O2B	2.43	116.92	107.64
5	B	1376	UDP	C6-C5-C4	-2.41	116.23	119.52
5	B	1376	UDP	PA-O3A-PB	-2.32	124.86	132.83
5	A	1374	UDP	O3B-PB-O2B	2.24	116.19	107.64
3	A	1370	GOL	O2-C2-C1	2.19	118.79	109.12
5	B	1377	UDP	C2'-C3'-C4'	-2.18	98.41	102.64
5	B	1377	UDP	PA-O5'-C5'	2.17	134.39	121.68
5	A	1375	UDP	O2-C2-N3	-2.16	117.47	121.50
5	A	1375	UDP	O2'-C2'-C3'	2.08	118.54	111.82
5	A	1374	UDP	C6-C5-C4	-2.07	116.69	119.52
5	A	1375	UDP	C6-N1-C2	-2.03	118.40	120.99

There are no chirality outliers.

All (22) torsion outliers are listed below:

Mol	Chain	Res	Type	Atoms
3	B	1378	GOL	O1-C1-C2-C3
3	B	1378	GOL	C1-C2-C3-O3
3	B	1379	GOL	O1-C1-C2-C3
5	A	1375	UDP	C5'-O5'-PA-O3A
5	B	1377	UDP	C5'-O5'-PA-O1A
5	B	1377	UDP	C5'-O5'-PA-O2A
5	A	1375	UDP	C3'-C4'-C5'-O5'
5	A	1375	UDP	O4'-C4'-C5'-O5'
3	A	1370	GOL	C1-C2-C3-O3
3	B	1379	GOL	O2-C2-C3-O3
5	A	1374	UDP	C4'-C5'-O5'-PA
5	B	1376	UDP	C4'-C5'-O5'-PA
5	B	1377	UDP	PA-O3A-PB-O3B
5	B	1377	UDP	C5'-O5'-PA-O3A
5	A	1375	UDP	C5'-O5'-PA-O1A
5	B	1377	UDP	C3'-C4'-C5'-O5'
5	B	1377	UDP	PA-O3A-PB-O1B
5	A	1375	UDP	PA-O3A-PB-O1B
5	B	1377	UDP	O4'-C1'-N1-C6
5	B	1377	UDP	C2'-C1'-N1-C6
3	B	1378	GOL	O1-C1-C2-O2
3	B	1379	GOL	O1-C1-C2-O2

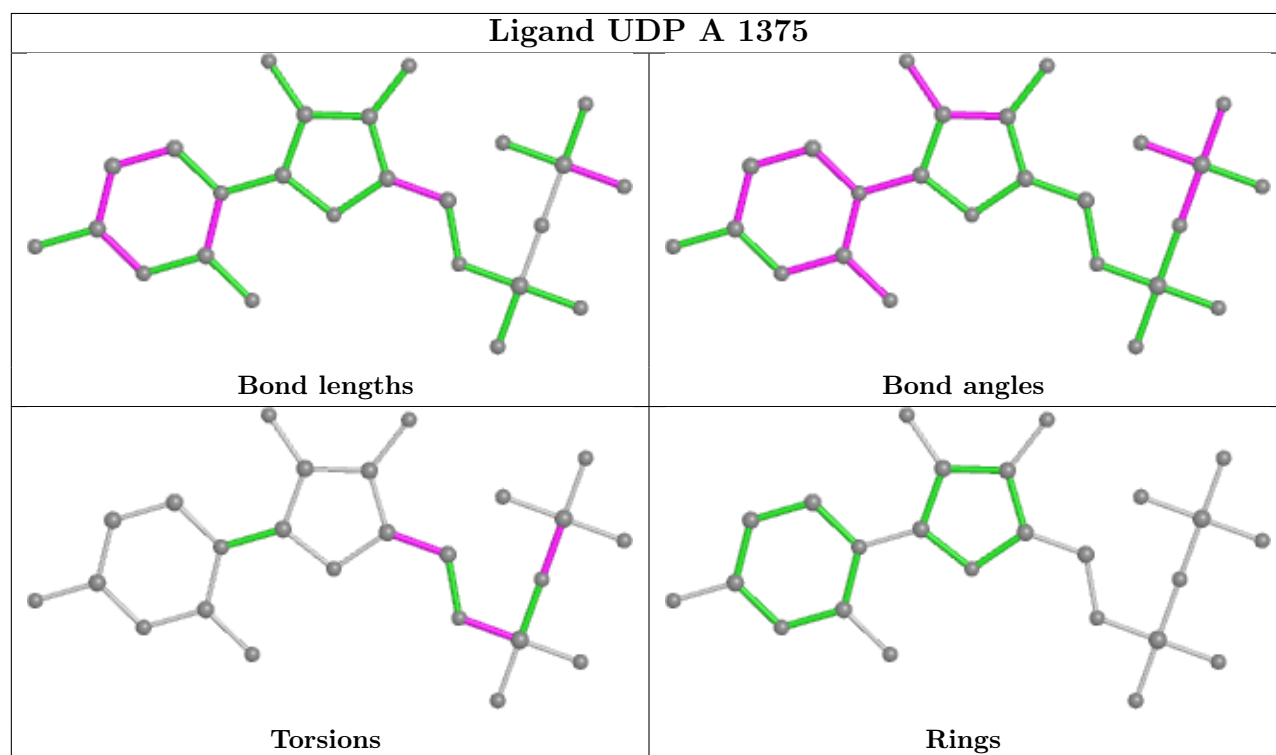
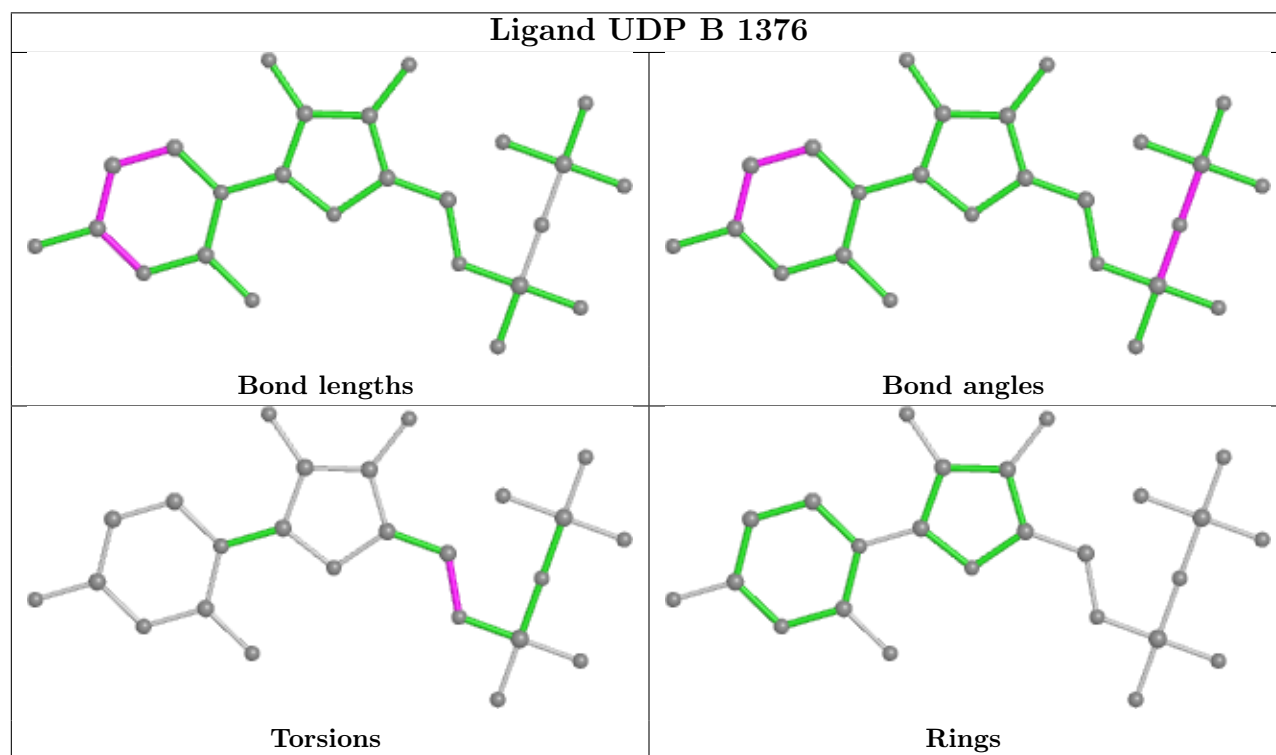
There are no ring outliers.

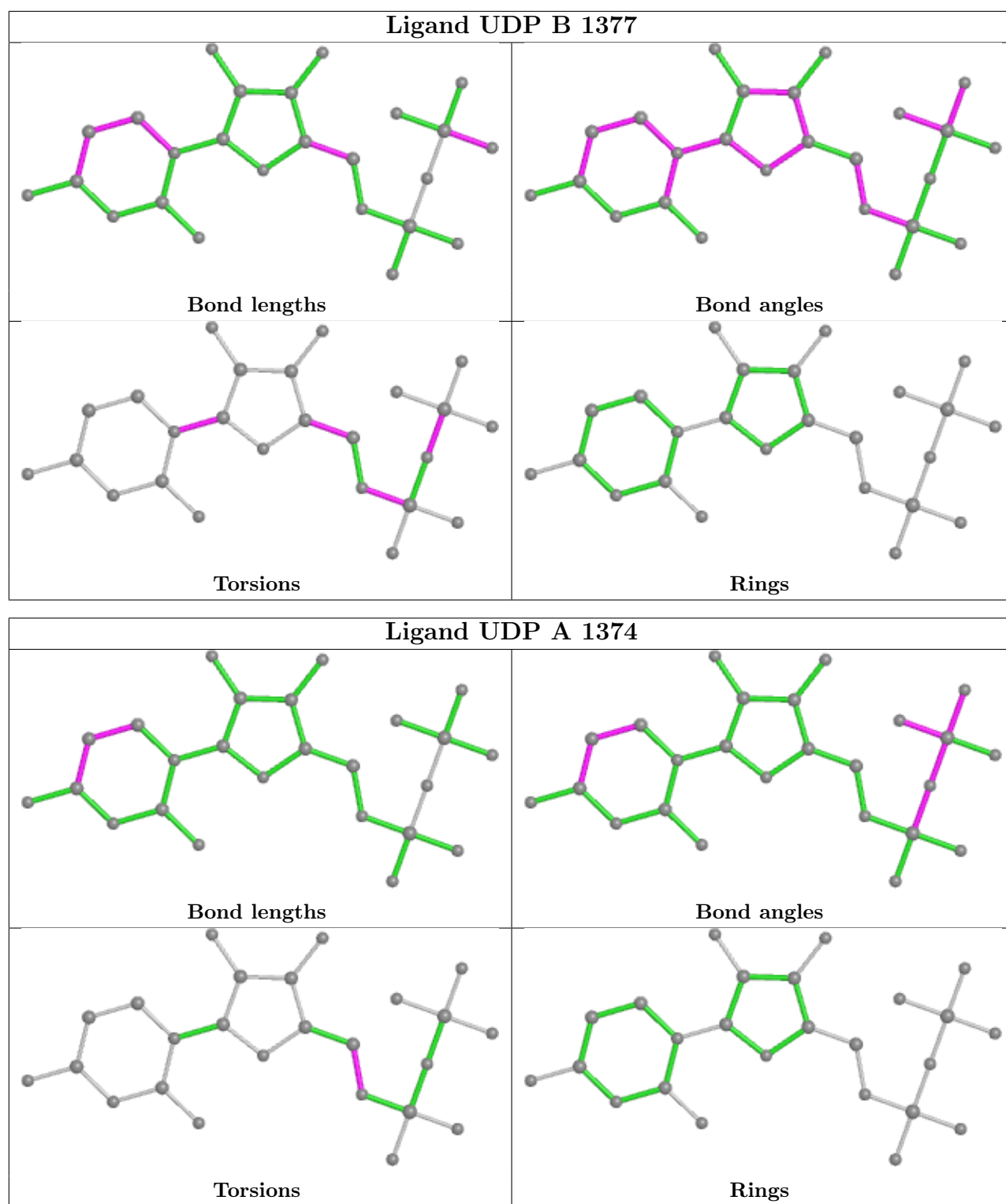
5 monomers are involved in 20 short contacts:

Mol	Chain	Res	Type	Clashes	Symm-Clashes
5	A	1375	UDP	10	0
5	B	1377	UDP	4	0
3	A	1370	GOL	1	0
3	B	1379	GOL	1	0
3	B	1378	GOL	4	0

The following is a two-dimensional graphical depiction of Mogul quality analysis of bond lengths, bond angles, torsion angles, and ring geometry for all instances of the Ligand of Interest. In addition, ligands with molecular weight > 250 and outliers as shown on the validation Tables will also be included. For torsion angles, if less than 5% of the Mogul distribution of torsion angles is within 10 degrees of the torsion angle in question, then that torsion angle is considered an outlier. Any bond that is central to one or more torsion angles identified as an outlier by Mogul will be highlighted in the graph. For rings, the root-mean-square deviation (RMSD) between the ring in question and similar rings identified by Mogul is calculated over all ring torsion angles. If the average RMSD is greater than 60 degrees and the minimal RMSD between the ring in question and any Mogul-identified rings is also greater than 60 degrees, then that ring is considered an outlier.

The outliers are highlighted in purple. The color gray indicates Mogul did not find sufficient equivalents in the CSD to analyse the geometry.





## 5.7 Other polymers [i](#)

There are no such residues in this entry.

## 5.8 Polymer linkage issues

There are no chain breaks in this entry.

## 6 Fit of model and data [i](#)

### 6.1 Protein, DNA and RNA chains [i](#)

EDS was not executed - this section is therefore empty.

### 6.2 Non-standard residues in protein, DNA, RNA chains [i](#)

EDS was not executed - this section is therefore empty.

### 6.3 Carbohydrates [i](#)

EDS was not executed - this section is therefore empty.

### 6.4 Ligands [i](#)

EDS was not executed - this section is therefore empty.

### 6.5 Other polymers [i](#)

EDS was not executed - this section is therefore empty.