



# wwPDB X-ray Structure Validation Summary Report ⓘ

Aug 8, 2023 – 07:58 AM EDT

PDB ID : 1O0A  
Title : BACTERIORHODOPSIN L INTERMEDIATE AT 1.62 A RESOLUTION  
Authors : Lanyi, J.K.  
Deposited on : 2003-02-20  
Resolution : 1.62 Å(reported)

This is a wwPDB X-ray Structure Validation Summary Report for a publicly released PDB entry.

We welcome your comments at [validation@mail.wwpdb.org](mailto:validation@mail.wwpdb.org)

A user guide is available at

<https://www.wwpdb.org/validation/2017/XrayValidationReportHelp>

with specific help available everywhere you see the ⓘ symbol.

The types of validation reports are described at

<https://www.wwpdb.org/validation/2017/FAQs#types>.

---

The following versions of software and data (see [references ⓘ](#)) were used in the production of this report:

MolProbity : 4.02b-467  
Mogul : 1.8.5 (274361), CSD as541be (2020)  
Xtrriage (Phenix) : **NOT EXECUTED**  
EDS : **NOT EXECUTED**  
buster-report : 1.1.7 (2018)  
Percentile statistics : 20191225.v01 (using entries in the PDB archive December 25th 2019)  
Ideal geometry (proteins) : Engh & Huber (2001)  
Ideal geometry (DNA, RNA) : Parkinson et al. (1996)  
Validation Pipeline (wwPDB-VP) : 2.35

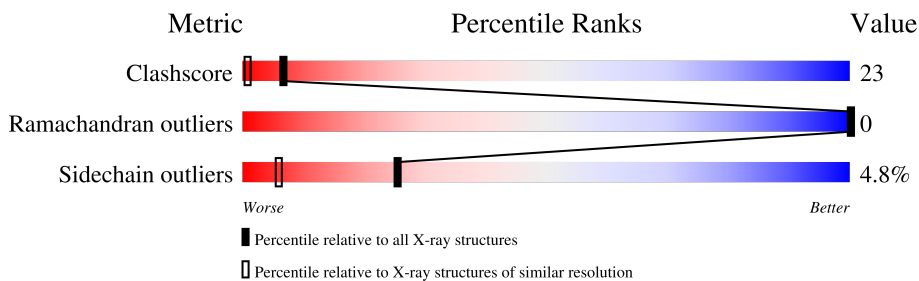
# 1 Overall quality at a glance

The following experimental techniques were used to determine the structure:

*X-RAY DIFFRACTION*

The reported resolution of this entry is 1.62 Å.

Percentile scores (ranging between 0-100) for global validation metrics of the entry are shown in the following graphic. The table shows the number of entries on which the scores are based.



Metric	Whole archive (#Entries)	Similar resolution (#Entries, resolution range(Å))
Clashscore	141614	5002 (1.64-1.60)
Ramachandran outliers	138981	4888 (1.64-1.60)
Sidechain outliers	138945	4887 (1.64-1.60)

The table below summarises the geometric issues observed across the polymeric chains and their fit to the electron density. The red, orange, yellow and green segments of the lower bar indicate the fraction of residues that contain outliers for  $\geq 3$ , 2, 1 and 0 types of geometric quality criteria respectively. A grey segment represents the fraction of residues that are not modelled. The numeric value for each fraction is indicated below the corresponding segment, with a dot representing fractions  $\leq 5\%$ .

Note EDS was not executed.

Mol	Chain	Length	Quality of chain
1	1-A	249	
1	2-A	249	

The following table lists non-polymeric compounds, carbohydrate monomers and non-standard residues in protein, DNA, RNA chains that are outliers for geometric or electron-density-fit criteria:

Mol	Type	Chain	Res	Chirality	Geometry	Clashes	Electron density
3	LI1	1-A	601	X	-	-	-
3	LI1	1-A	602	X	-	-	-
3	LI1	1-A	611	X	-	-	-
3	LI1	1-A	613	X	-	-	-

*Continued on next page...*

*Continued from previous page...*

<b>Mol</b>	<b>Type</b>	<b>Chain</b>	<b>Res</b>	<b>Chirality</b>	<b>Geometry</b>	<b>Clashes</b>	<b>Electron density</b>
3	LI1	2-A	601	X	-	-	-
3	LI1	2-A	602	X	-	X	-
3	LI1	2-A	611	X	-	-	-
3	LI1	2-A	613	X	-	-	-
4	SQU	1-A	701	-	X	-	-
4	SQU	2-A	701	-	X	-	-

## 2 Entry composition [i](#)

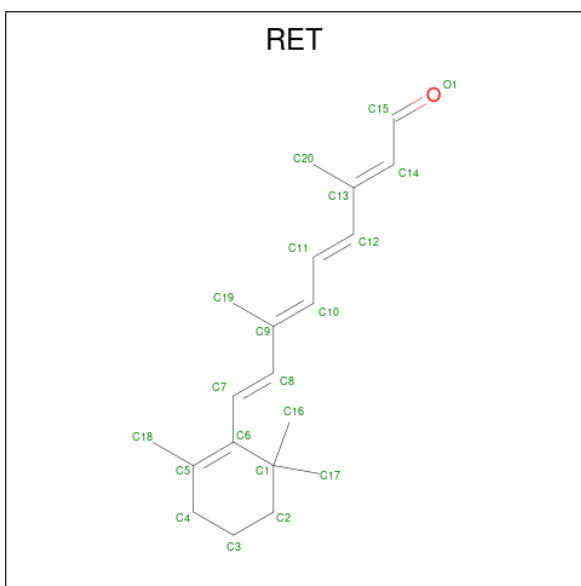
There are 5 unique types of molecules in this entry. The entry contains 4144 atoms, of which 0 are hydrogens and 0 are deuteriums.

In the tables below, the ZeroOcc column contains the number of atoms modelled with zero occupancy, the AltConf column contains the number of residues with at least one atom in alternate conformation and the Trace column contains the number of residues modelled with at most 2 atoms.

- Molecule 1 is a protein called Bacteriorhodopsin.

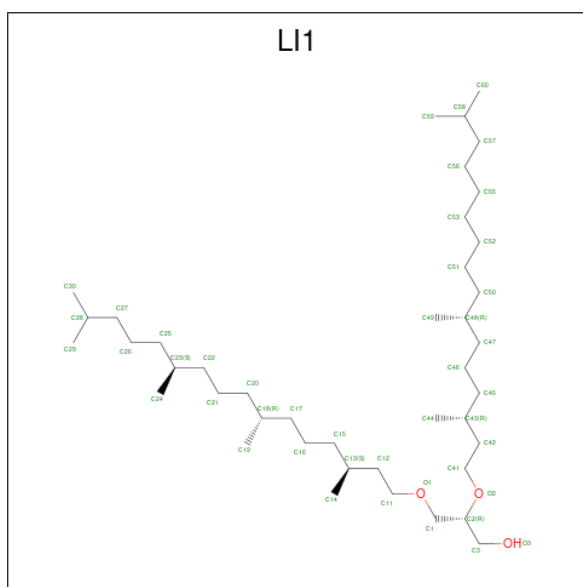
Mol	Chain	Residues	Atoms					ZeroOcc	AltConf	Trace
			Total	C	N	O	S			
1	1-A	222	Total 1720	C 1159	N 262	O 290	S 9	0	0	0
1	2-A	222	Total 1720	C 1159	N 262	O 290	S 9	0	0	0

- Molecule 2 is RETINAL (three-letter code: RET) (formula:  $C_{20}H_{28}O$ ).



Mol	Chain	Residues	Atoms		ZeroOcc	AltConf
			Total	C		
2	1-A	1	Total 20	C 20	0	0
2	2-A	1	Total 20	C 20	0	0

- Molecule 3 is 1-[2,6,10,14-TETRAMETHYL-HEXADECAN-16-YL]-2-[2,10,14-TRIMETHYLHEXADECAN-16-YL]GLYCEROL (three-letter code: LI1) (formula:  $C_{42}H_{86}O_3$ ).



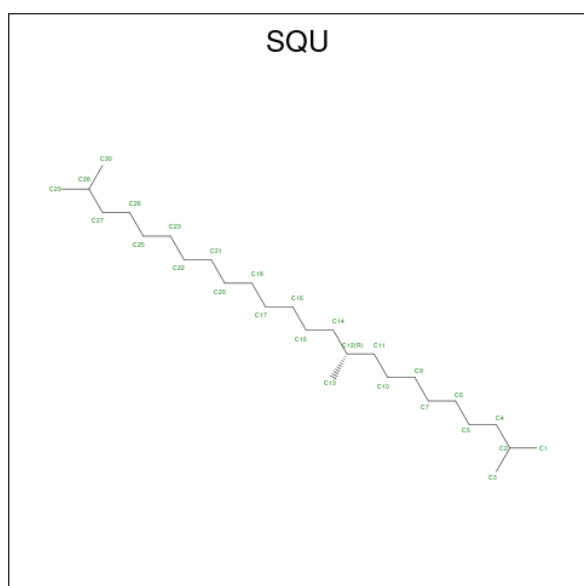
Mol	Chain	Residues	Atoms	ZeroOcc	AltConf
3	1-A	1	Total C O 32 29 3	0	0
3	2-A	1	Total C O 32 29 3	0	0
3	1-A	1	Total C O 40 37 3	0	0
3	2-A	1	Total C O 40 37 3	0	0
3	1-A	1	Total C 18 18	0	0
3	2-A	1	Total C 18 18	0	0
3	1-A	1	Total C 16 16	0	0
3	2-A	1	Total C 16 16	0	0
3	1-A	1	Total C 8 8	0	0
3	2-A	1	Total C 8 8	0	0
3	1-A	1	Total C 8 8	0	0
3	2-A	1	Total C 8 8	0	0
3	1-A	1	Total C O 38 35 3	0	0
3	2-A	1	Total C O 38 35 3	0	0

*Continued on next page...*

Continued from previous page...

Mol	Chain	Residues	Atoms	ZeroOcc	AltConf
3	1-A	1	Total C 18 18	0	0
3	2-A	1	Total C 18 18	0	0
3	1-A	1	Total C 16 16	0	0
3	2-A	1	Total C 16 16	0	0
3	1-A	1	Total C O 40 37 3	0	0
3	2-A	1	Total C O 40 37 3	0	0
3	1-A	1	Total C 17 17	0	0
3	2-A	1	Total C 17 17	0	0
3	1-A	1	Total C 18 18	0	0
3	2-A	1	Total C 18 18	0	0
3	1-A	1	Total C 13 13	0	0
3	2-A	1	Total C 13 13	0	0

- Molecule 4 is 2,10,23-TRIMETHYL-TETRACOSANE (three-letter code: SQU) (formula:  $C_{27}H_{56}$ ).



Mol	Chain	Residues	Atoms	ZeroOcc	AltConf
4	1-A	1	Total C 27 27	0	0
4	2-A	1	Total C 27 27	0	0

- Molecule 5 is water.

Mol	Chain	Residues	Atoms	ZeroOcc	AltConf
5	1-A	23	Total O 23 23	0	0
5	2-A	23	Total O 23 23	0	0

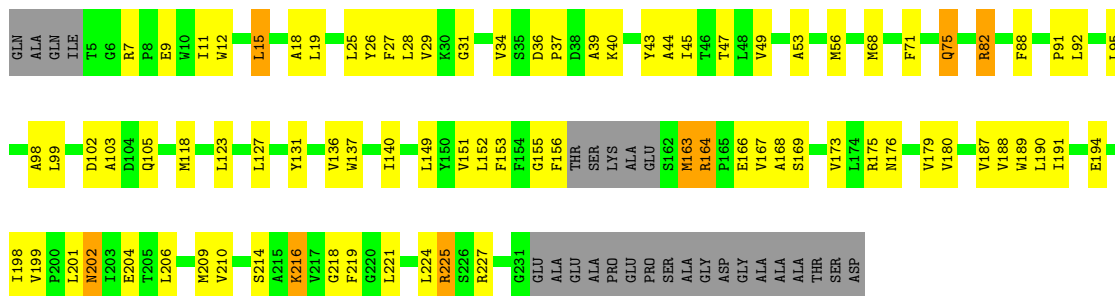
### 3 Residue-property plots [i](#)

These plots are drawn for all protein, RNA, DNA and oligosaccharide chains in the entry. The first graphic for a chain summarises the proportions of the various outlier classes displayed in the second graphic. The second graphic shows the sequence view annotated by issues in geometry. Residues are color-coded according to the number of geometric quality criteria for which they contain at least one outlier: green = 0, yellow = 1, orange = 2 and red = 3 or more. Stretches of 2 or more consecutive residues without any outlier are shown as a green connector. Residues present in the sample, but not in the model, are shown in grey.

Note EDS was not executed.

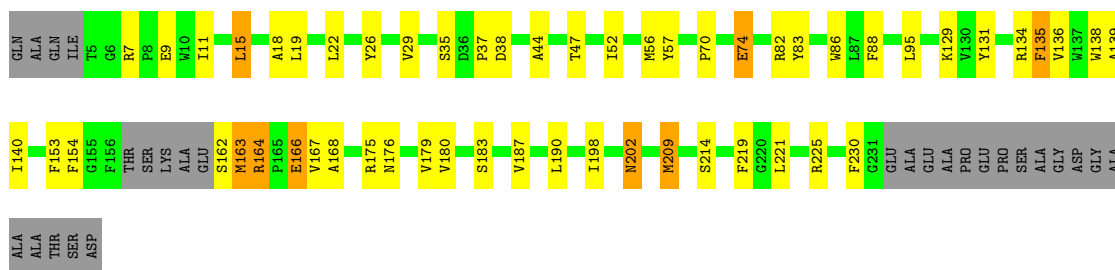
- Molecule 1: Bacteriorhodopsin

Chain 1-A: 



- Molecule 1: Bacteriorhodopsin

Chain 2-A: 





## 4 Data and refinement statistics

Xtriage (Phenix) and EDS were not executed - this section is therefore incomplete.

Property	Value	Source
Space group	P 63	Depositor
Cell constants a, b, c, $\alpha$ , $\beta$ , $\gamma$	60.80Å 60.80Å 107.78Å 90.00° 90.00° 120.00°	Depositor
Resolution (Å)	25.00 – 1.62	Depositor
% Data completeness (in resolution range)	85.5 (25.00-1.62)	Depositor
$R_{merge}$	0.06	Depositor
$R_{sym}$	(Not available)	Depositor
Refinement program	SHELXL-97	Depositor
R, $R_{free}$	0.154 , 0.211	Depositor
Estimated twinning fraction	No twinning to report.	Xtriage
Total number of atoms	4144	wwPDB-VP
Average B, all atoms (Å <sup>2</sup> )	34.0	wwPDB-VP

## 5 Model quality [i](#)

### 5.1 Standard geometry [i](#)

Bond lengths and bond angles in the following residue types are not validated in this section: RET, SQU, LI1

The Z score for a bond length (or angle) is the number of standard deviations the observed value is removed from the expected value. A bond length (or angle) with  $|Z| > 5$  is considered an outlier worth inspection. RMSZ is the root-mean-square of all Z scores of the bond lengths (or angles).

Mol	Chain	Bond lengths		Bond angles	
		RMSZ	# Z  >5	RMSZ	# Z  >5
1	1-A	0.48	0/1767	1.35	13/2413 (0.5%)
1	2-A	0.79	0/1767	1.55	20/2413 (0.8%)
All	All	0.66	0/3534	1.45	33/4826 (0.7%)

There are no bond length outliers.

The worst 5 of 33 bond angle outliers are listed below:

Mol	Chain	Res	Type	Atoms	Z	Observed(°)	Ideal(°)
1	1-A	216	LYS	CB-CG-CD	14.84	150.18	111.60
1	2-A	175	ARG	NE-CZ-NH1	12.33	126.47	120.30
1	1-A	216	LYS	CA-CB-CG	11.30	138.25	113.40
1	1-A	219	PHE	CB-CG-CD1	7.96	126.37	120.80
1	2-A	175	ARG	NE-CZ-NH2	-7.68	116.46	120.30

There are no chirality outliers.

There are no planarity outliers.

### 5.2 Too-close contacts [i](#)

In the following table, the Non-H and H(model) columns list the number of non-hydrogen atoms and hydrogen atoms in the chain respectively. The H(added) column lists the number of hydrogen atoms added and optimized by MolProbity. The Clashes column lists the number of clashes within the asymmetric unit, whereas Symm-Clashes lists symmetry-related clashes.

Mol	Chain	Non-H	H(model)	H(added)	Clashes	Symm-Clashes
1	1-A	1720	0	1776	85	0
1	2-A	1720	0	1776	62	0
2	1-A	20	0	27	4	0
2	2-A	20	0	27	1	0

*Continued on next page...*

Continued from previous page...

Mol	Chain	Non-H	H(model)	H(added)	Clashes	Symm-Clashes
3	1-A	282	0	451	53	0
3	2-A	282	0	451	69	0
4	1-A	27	0	53	5	0
4	2-A	27	0	53	3	0
5	1-A	23	0	0	4	0
5	2-A	23	0	0	1	0
All	All	4144	0	4614	204	0

The all-atom clashscore is defined as the number of clashes found per 1000 atoms (including hydrogen atoms). The all-atom clashscore for this structure is 23.

The worst 5 of 204 close contacts within the same asymmetric unit are listed below, sorted by their clash magnitude.

Atom-1	Atom-2	Interatomic distance (Å)	Clash overlap (Å)
1:A:198:ILE:HG22	1:A:199:VAL:HG23	1.44	0.97
1:A:18:ALA:HA	3:A:606:LI1:H211	1.53	0.90
1:A:18:ALA:HA	3:A:606:LI1:H211	1.53	0.90
1:A:164:ARG:HD3	1:A:167:VAL:HG23	1.57	0.86
1:A:180:VAL:HG22	3:A:610:LI1:H211	1.61	0.80

There are no symmetry-related clashes.

## 5.3 Torsion angles [i](#)

### 5.3.1 Protein backbone [i](#)

In the following table, the Percentiles column shows the percent Ramachandran outliers of the chain as a percentile score with respect to all X-ray entries followed by that with respect to entries of similar resolution.

The Analysed column shows the number of residues for which the backbone conformation was analysed, and the total number of residues.

Mol	Chain	Analysed	Favoured	Allowed	Outliers	Percentiles	
1	1-A	218/249 (88%)	211 (97%)	7 (3%)	0	100	100
1	2-A	218/249 (88%)	216 (99%)	2 (1%)	0	100	100
All	All	436/498 (88%)	427 (98%)	9 (2%)	0	100	100

There are no Ramachandran outliers to report.

### 5.3.2 Protein sidechains [i](#)

In the following table, the Percentiles column shows the percent sidechain outliers of the chain as a percentile score with respect to all X-ray entries followed by that with respect to entries of similar resolution.

The Analysed column shows the number of residues for which the sidechain conformation was analysed, and the total number of residues.

Mol	Chain	Analysed	Rotameric	Outliers	Percentiles	
1	1-A	178/195 (91%)	170 (96%)	8 (4%)	27	7
1	2-A	178/195 (91%)	169 (95%)	9 (5%)	24	5
All	All	356/390 (91%)	339 (95%)	17 (5%)	25	6

5 of 17 residues with a non-rotameric sidechain are listed below:

Mol	Chain	Res	Type
1	2-A	164	ARG
1	2-A	202	ASN
1	1-A	227	ARG
1	2-A	15	LEU
1	2-A	38	ASP

Sometimes sidechains can be flipped to improve hydrogen bonding and reduce clashes. All (5) such sidechains are listed below:

Mol	Chain	Res	Type
1	1-A	75	GLN
1	1-A	105	GLN
1	1-A	202	ASN
1	2-A	105	GLN
1	2-A	202	ASN

### 5.3.3 RNA [i](#)

There are no RNA molecules in this entry.

## 5.4 Non-standard residues in protein, DNA, RNA chains [i](#)

There are no non-standard protein/DNA/RNA residues in this entry.

## 5.5 Carbohydrates [i](#)

There are no monosaccharides in this entry.

## 5.6 Ligand geometry [i](#)

30 ligands are modelled in this entry.

In the following table, the Counts columns list the number of bonds (or angles) for which Mogul statistics could be retrieved, the number of bonds (or angles) that are observed in the model and the number of bonds (or angles) that are defined in the Chemical Component Dictionary. The Link column lists molecule types, if any, to which the group is linked. The Z score for a bond length (or angle) is the number of standard deviations the observed value is removed from the expected value. A bond length (or angle) with  $|Z| > 2$  is considered an outlier worth inspection. RMSZ is the root-mean-square of all Z scores of the bond lengths (or angles).

Mol	Type	Chain	Res	Link	Bond lengths			Bond angles		
					Counts	RMSZ	# Z  > 2	Counts	RMSZ	# Z  > 2
3	LI1	1-A	607	-	37,37,44	1.02	2 (5%)	37,38,51	1.12	3 (8%)
3	LI1	1-A	603	-	17,17,44	1.07	1 (5%)	18,18,51	1.28	2 (11%)
3	LI1	2-A	604	-	15,15,44	1.15	1 (6%)	14,14,51	1.22	1 (7%)
3	LI1	1-A	612	-	17,17,44	1.06	1 (5%)	18,18,51	1.04	1 (5%)
3	LI1	1-A	601	-	31,31,44	1.11	2 (6%)	33,33,51	1.17	5 (15%)
3	LI1	2-A	606	-	7,7,44	0.47	0	6,6,51	0.60	0
3	LI1	2-A	613	-	12,12,44	0.43	0	12,12,51	1.19	2 (16%)
3	LI1	1-A	613	-	12,12,44	0.43	0	12,12,51	1.19	2 (16%)
4	SQU	1-A	701	-	26,26,26	1.40	6 (23%)	28,28,28	1.89	11 (39%)
3	LI1	1-A	606	-	7,7,44	0.47	0	6,6,51	0.60	0
3	LI1	2-A	605	-	7,7,44	0.48	0	6,6,51	0.71	0
3	LI1	2-A	601	-	31,31,44	1.11	2 (6%)	33,33,51	1.17	5 (15%)
3	LI1	2-A	602	-	39,39,44	1.04	2 (5%)	41,43,51	1.58	5 (12%)
3	LI1	1-A	610	-	39,39,44	1.05	2 (5%)	41,41,51	1.17	2 (4%)
3	LI1	2-A	609	-	15,15,44	1.14	1 (6%)	14,14,51	1.18	2 (14%)
3	LI1	1-A	609	-	15,15,44	1.14	1 (6%)	14,14,51	1.18	2 (14%)
2	RET	2-A	301	1	20,20,21	1.39	4 (20%)	27,27,28	2.04	11 (40%)
3	LI1	1-A	608	-	17,17,44	1.06	1 (5%)	18,18,51	1.24	2 (11%)
3	LI1	2-A	612	-	17,17,44	1.06	1 (5%)	18,18,51	1.04	1 (5%)
4	SQU	2-A	701	-	26,26,26	1.40	6 (23%)	28,28,28	1.89	11 (39%)
3	LI1	1-A	602	-	39,39,44	1.04	2 (5%)	41,43,51	1.58	5 (12%)
3	LI1	2-A	610	-	39,39,44	1.05	2 (5%)	41,41,51	1.17	2 (4%)
3	LI1	2-A	607	-	37,37,44	1.02	2 (5%)	37,38,51	1.12	3 (8%)

Mol	Type	Chain	Res	Link	Bond lengths			Bond angles		
					Counts	RMSZ	# Z  > 2	Counts	RMSZ	# Z  > 2
3	LI1	2-A	608	-	17,17,44	1.06	1 (5%)	18,18,51	1.24	2 (11%)
2	RET	1-A	301	1	20,20,21	1.09	1 (5%)	27,27,28	6.26	12 (44%)
3	LI1	1-A	604	-	15,15,44	1.15	1 (6%)	14,14,51	1.22	1 (7%)
3	LI1	1-A	605	-	7,7,44	0.48	0	6,6,51	0.71	0
3	LI1	2-A	611	-	16,16,44	1.10	1 (6%)	18,18,51	2.23	6 (33%)
3	LI1	1-A	611	-	16,16,44	1.10	1 (6%)	18,18,51	2.23	6 (33%)
3	LI1	2-A	603	-	17,17,44	1.07	1 (5%)	18,18,51	1.28	2 (11%)

In the following table, the Chirals column lists the number of chiral outliers, the number of chiral centers analysed, the number of these observed in the model and the number defined in the Chemical Component Dictionary. Similar counts are reported in the Torsion and Rings columns. '-' means no outliers of that kind were identified.

Mol	Type	Chain	Res	Link	Chirals	Torsions	Rings
3	LI1	1-A	607	-	-	20/38/38/49	-
3	LI1	1-A	603	-	-	6/16/16/49	-
3	LI1	2-A	604	-	-	4/13/13/49	-
3	LI1	1-A	612	-	-	9/16/16/49	-
3	LI1	1-A	601	-	2/2/3/8	17/32/32/49	-
3	LI1	2-A	606	-	-	2/5/5/49	-
3	LI1	2-A	613	-	1/1/1/8	4/11/11/49	-
3	LI1	1-A	613	-	1/1/1/8	4/11/11/49	-
4	SQU	1-A	701	-	-	18/25/25/25	-
3	LI1	1-A	606	-	-	2/5/5/49	-
3	LI1	2-A	605	-	-	2/5/5/49	-
3	LI1	2-A	601	-	2/2/3/8	17/32/32/49	-
3	LI1	2-A	602	-	2/2/5/8	24/42/42/49	-
3	LI1	1-A	610	-	-	25/39/39/49	-
3	LI1	2-A	609	-	-	10/13/13/49	-
3	LI1	1-A	609	-	-	10/13/13/49	-
2	RET	2-A	301	1	-	2/13/30/31	0/1/1/1
3	LI1	1-A	608	-	-	11/16/16/49	-
3	LI1	2-A	612	-	-	9/16/16/49	-
4	SQU	2-A	701	-	-	18/25/25/25	-
3	LI1	1-A	602	-	2/2/5/8	24/42/42/49	-
3	LI1	2-A	610	-	-	25/39/39/49	-

Continued on next page...

*Continued from previous page...*

Mol	Type	Chain	Res	Link	Chirals	Torsions	Rings
3	LI1	2-A	607	-	-	20/38/38/49	-
3	LI1	2-A	608	-	-	11/16/16/49	-
2	RET	1-A	301	1	-	3/13/30/31	0/1/1/1
3	LI1	1-A	604	-	-	4/13/13/49	-
3	LI1	1-A	605	-	-	2/5/5/49	-
3	LI1	2-A	611	-	3/3/3/8	10/17/17/49	-
3	LI1	1-A	611	-	3/3/3/8	10/17/17/49	-
3	LI1	2-A	603	-	-	6/16/16/49	-

The worst 5 of 45 bond length outliers are listed below:

Mol	Chain	Res	Type	Atoms	Z	Observed(Å)	Ideal(Å)
3	1-A	604	LI1	C26-C25	4.07	1.74	1.51
3	2-A	604	LI1	C26-C25	4.07	1.74	1.51
3	1-A	612	LI1	C26-C25	4.06	1.74	1.51
3	2-A	612	LI1	C26-C25	4.06	1.74	1.51
3	1-A	603	LI1	C26-C25	4.03	1.74	1.51

The worst 5 of 107 bond angle outliers are listed below:

Mol	Chain	Res	Type	Atoms	Z	Observed(°)	Ideal(°)
2	1-A	301	RET	C19-C9-C8	18.29	146.90	118.08
2	1-A	301	RET	C8-C9-C10	-15.33	95.42	118.94
2	1-A	301	RET	C20-C13-C14	-14.11	82.01	123.71
2	1-A	301	RET	C20-C13-C12	11.25	135.80	118.08
3	1-A	611	LI1	C24-C23-C25	7.52	138.52	111.29

5 of 16 chirality outliers are listed below:

Mol	Chain	Res	Type	Atom
3	1-A	601	LI1	C2
3	1-A	601	LI1	C18
3	2-A	601	LI1	C2
3	2-A	601	LI1	C18
3	1-A	602	LI1	C43

5 of 329 torsion outliers are listed below:

Mol	Chain	Res	Type	Atoms
2	1-A	301	RET	C11-C12-C13-C14

*Continued on next page...*

*Continued from previous page...*

Mol	Chain	Res	Type	Atoms
2	1-A	301	RET	C12-C13-C14-C15
2	1-A	301	RET	C20-C13-C14-C15
2	2-A	301	RET	C20-C13-C14-C15
3	1-A	602	LI1	O2-C2-C3-O3

There are no ring outliers.

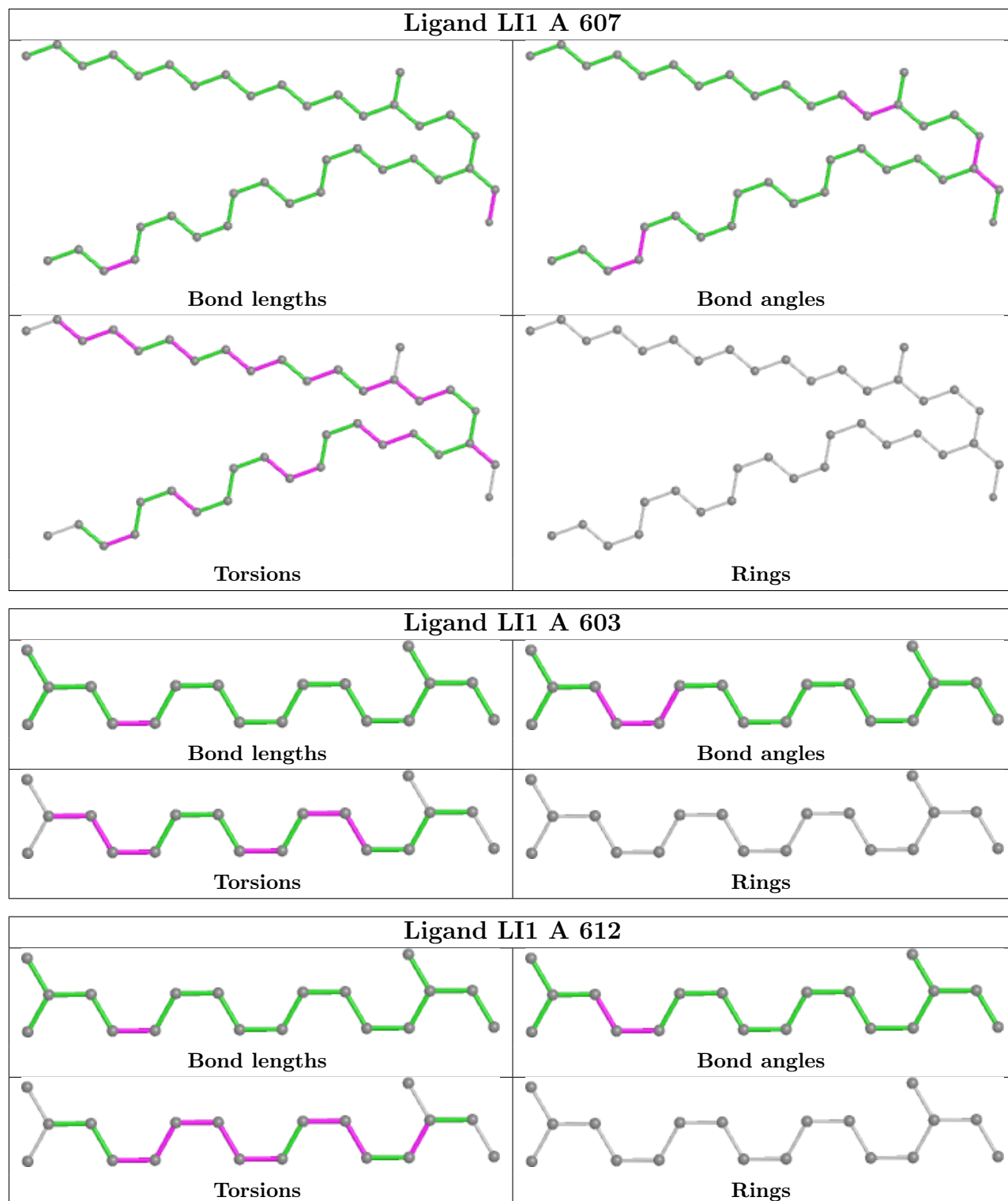
23 monomers are involved in 135 short contacts:

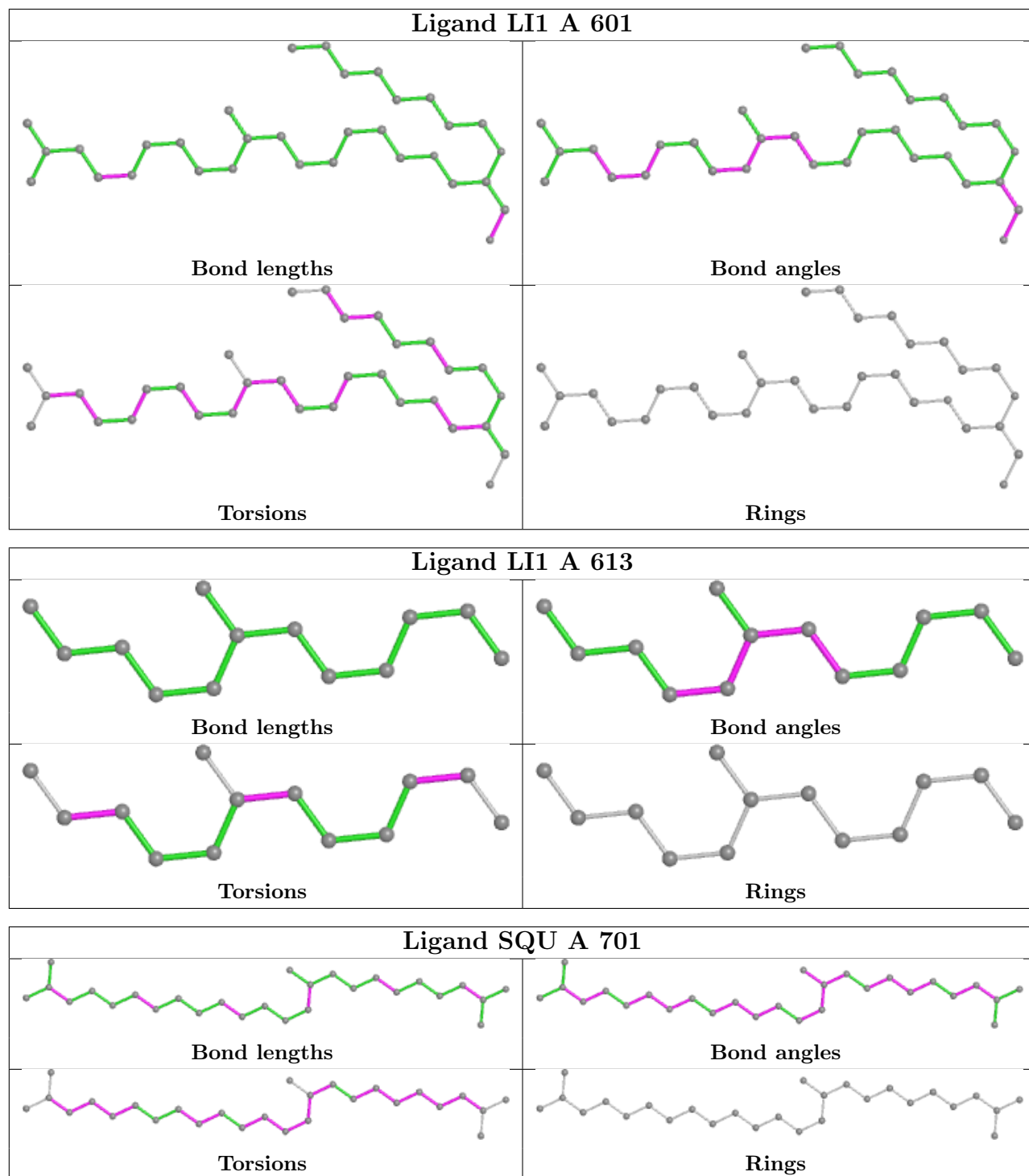
Mol	Chain	Res	Type	Clashes	Symm-Clashes
3	1-A	603	LI1	8	0
3	1-A	612	LI1	4	0
3	1-A	601	LI1	5	0
3	2-A	606	LI1	1	0
3	1-A	613	LI1	1	0
4	1-A	701	SQU	5	0
3	1-A	606	LI1	1	0
3	2-A	601	LI1	6	0
3	2-A	602	LI1	22	0
3	1-A	610	LI1	15	0
3	2-A	609	LI1	5	0
2	2-A	301	RET	1	0
3	1-A	608	LI1	2	0
3	2-A	612	LI1	5	0
4	2-A	701	SQU	3	0
3	1-A	602	LI1	15	0
3	2-A	610	LI1	17	0
3	2-A	607	LI1	1	0
3	2-A	608	LI1	3	0
2	1-A	301	RET	4	0
3	2-A	611	LI1	7	0
3	1-A	611	LI1	8	0
3	2-A	603	LI1	8	0

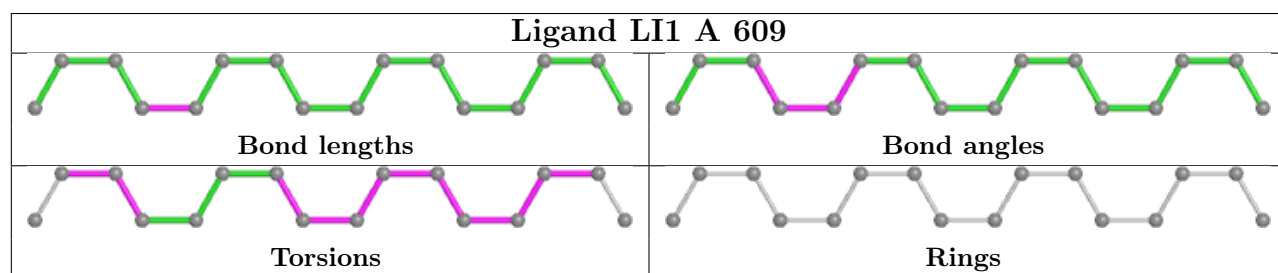
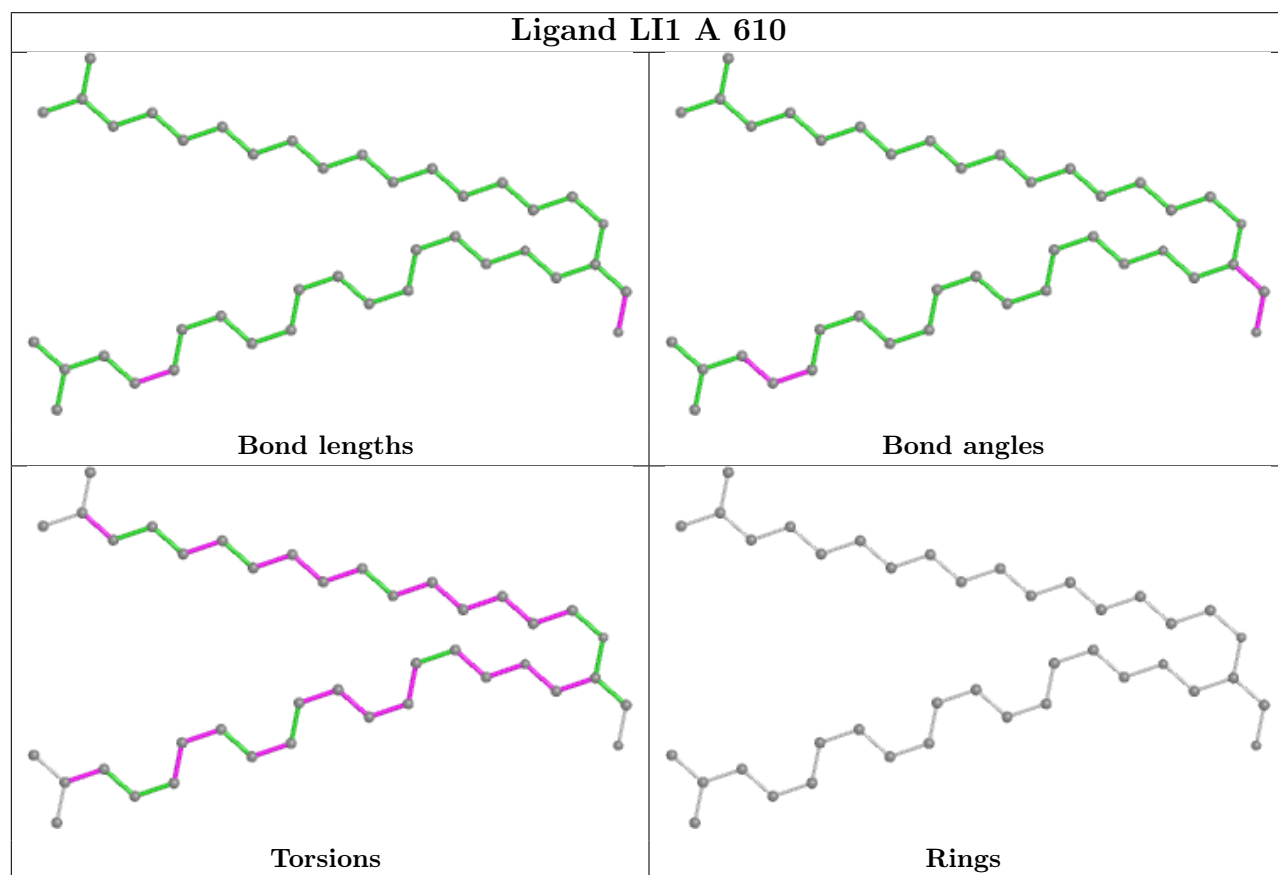
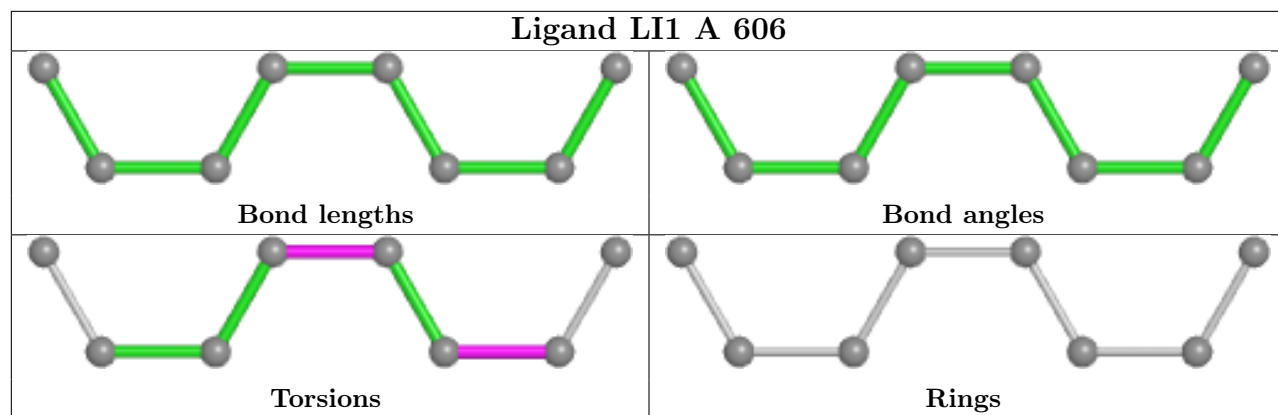
The following is a two-dimensional graphical depiction of Mogul quality analysis of bond lengths, bond angles, torsion angles, and ring geometry for all instances of the Ligand of Interest. In addition, ligands with molecular weight > 250 and outliers as shown on the validation Tables will also be included. For torsion angles, if less than 5% of the Mogul distribution of torsion angles is within 10 degrees of the torsion angle in question, then that torsion angle is considered an outlier. Any bond that is central to one or more torsion angles identified as an outlier by Mogul will be highlighted in the graph. For rings, the root-mean-square deviation (RMSD) between the ring in question and similar rings identified by Mogul is calculated over all ring torsion angles. If the average RMSD is greater than 60 degrees and the minimal RMSD between the ring in question and

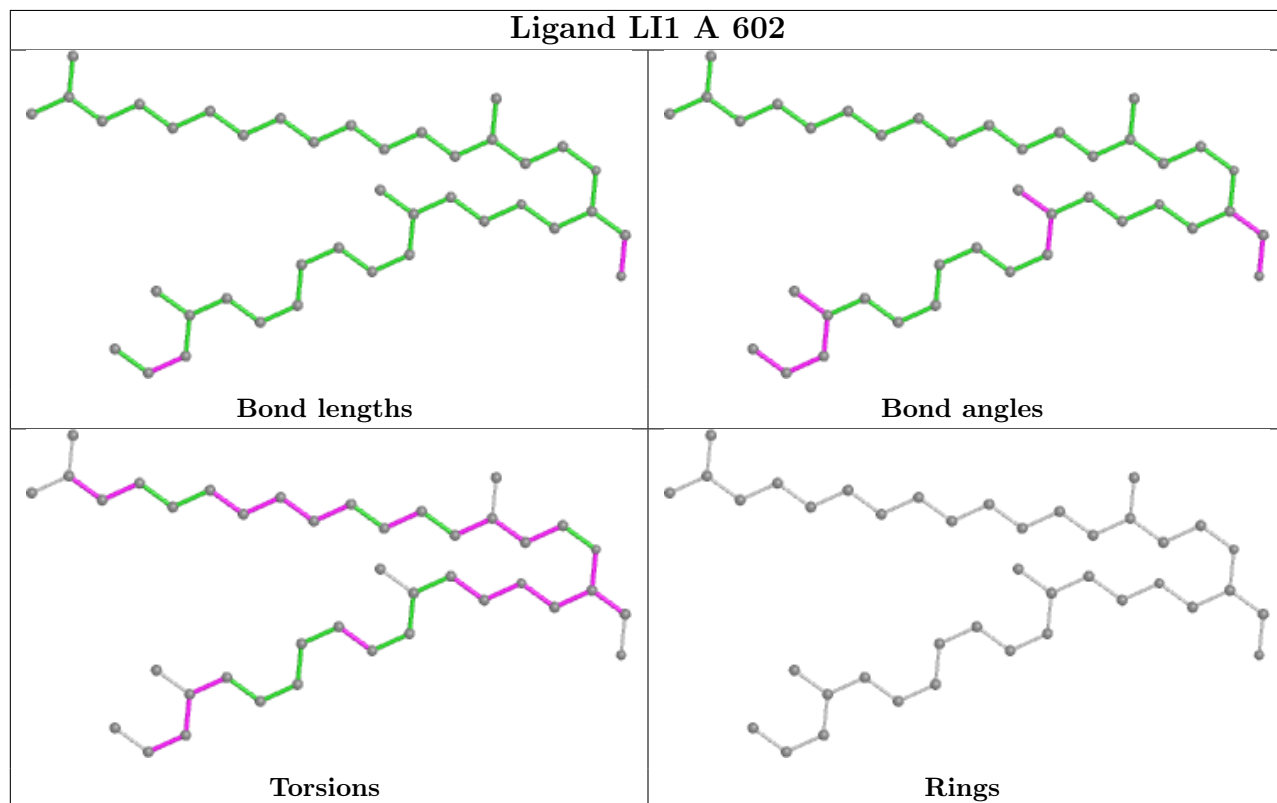
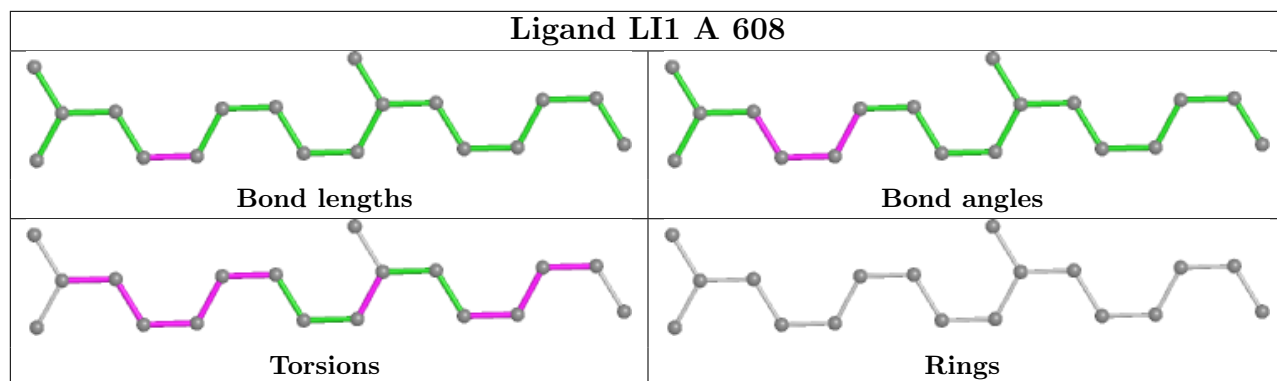


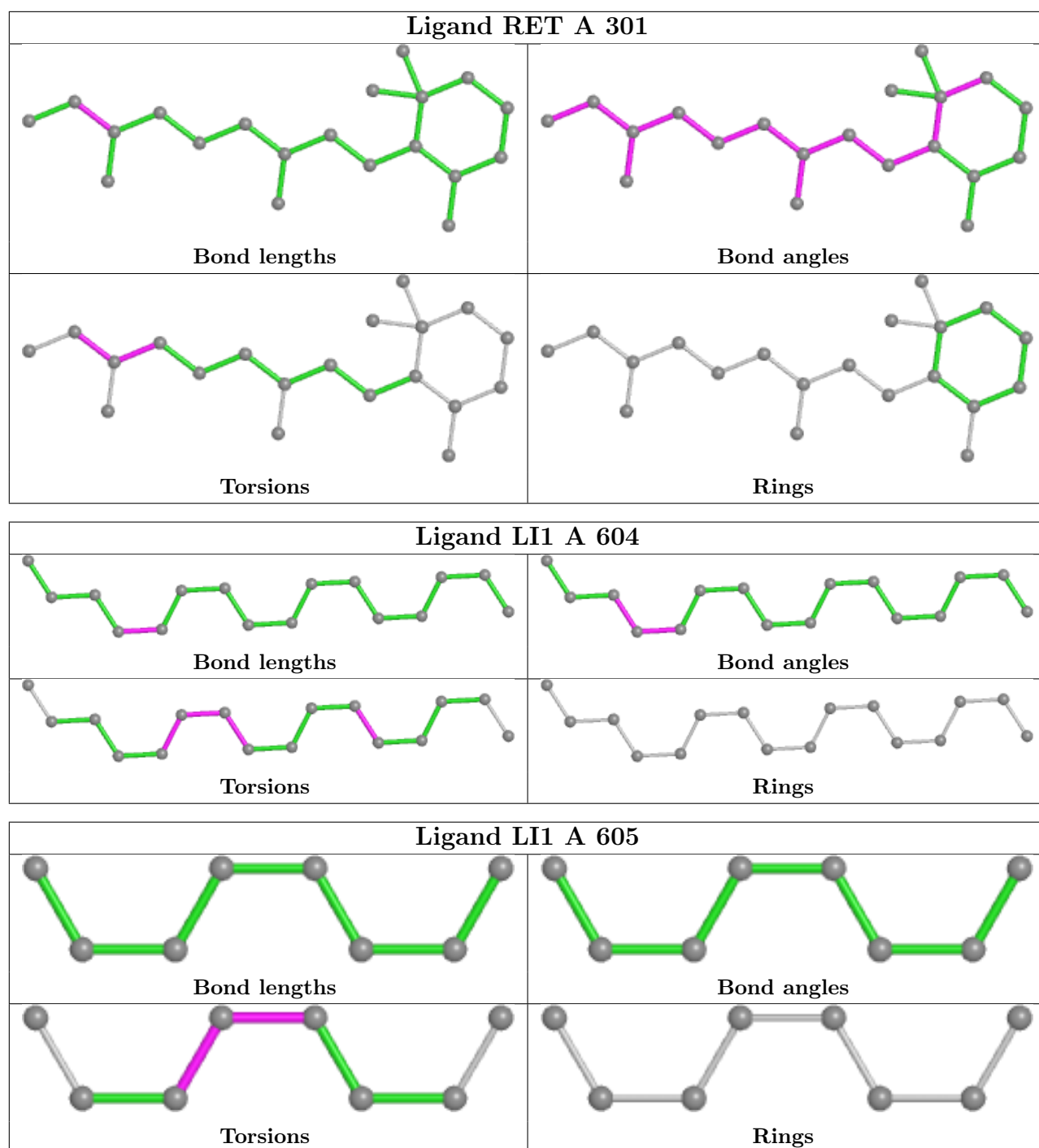
any Mogul-identified rings is also greater than 60 degrees, then that ring is considered an outlier. The outliers are highlighted in purple. The color gray indicates Mogul did not find sufficient equivalents in the CSD to analyse the geometry.

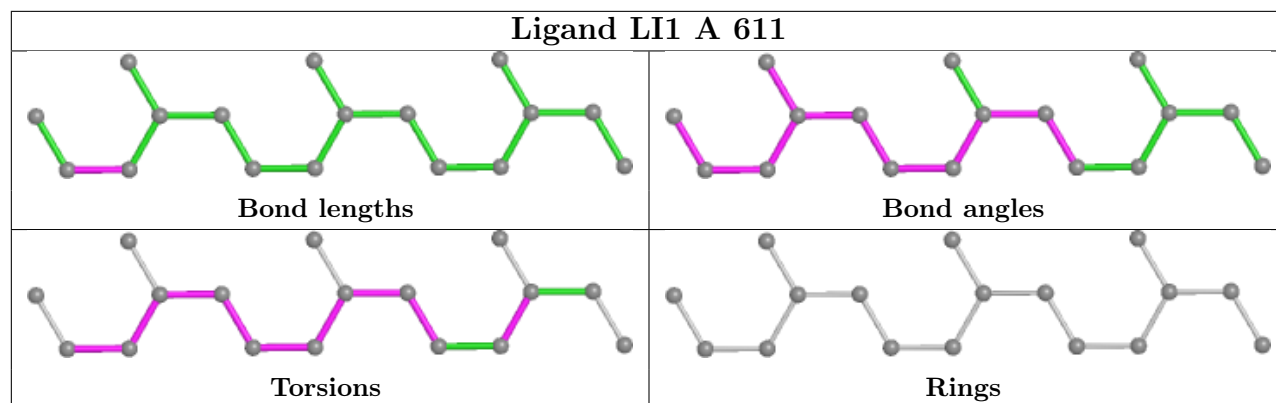












## 5.7 Other polymers [i](#)

There are no such residues in this entry.

## 5.8 Polymer linkage issues [i](#)

There are no chain breaks in this entry.

## 6 Fit of model and data

### 6.1 Protein, DNA and RNA chains

EDS was not executed - this section is therefore empty.

### 6.2 Non-standard residues in protein, DNA, RNA chains

EDS was not executed - this section is therefore empty.

### 6.3 Carbohydrates

EDS was not executed - this section is therefore empty.

### 6.4 Ligands

EDS was not executed - this section is therefore empty.

### 6.5 Other polymers

EDS was not executed - this section is therefore empty.