



Full wwPDB X-ray Structure Validation Report ⓘ

Oct 17, 2021 – 09:00 AM EDT

PDB ID : 1MW8
Title : Crystal Structure of a Complex between H365R mutant of 67 kDA N-terminal fragment of E. coli DNA Topoisomerase I and 5'-ACTTCGGGATG-3'
Authors : Perry, K.; Mondragon, A.
Deposited on : 2002-09-27
Resolution : 1.90 Å(reported)

This is a Full wwPDB X-ray Structure Validation Report for a publicly released PDB entry.

We welcome your comments at validation@mail.wwpdb.org

A user guide is available at

<https://www.wwpdb.org/validation/2017/XrayValidationReportHelp>

with specific help available everywhere you see the ⓘ symbol.

The following versions of software and data (see [references ⓘ](#)) were used in the production of this report:

MolProbity : 4.02b-467
Mogul : 1.8.5 (274361), CSD as541be (2020)
Xtrriage (Phenix) : 1.13
EDS : 2.23.2
buster-report : 1.1.7 (2018)
Percentile statistics : 20191225.v01 (using entries in the PDB archive December 25th 2019)
Refmac : 5.8.0158
CCP4 : 7.0.044 (Gargrove)
Ideal geometry (proteins) : Engh & Huber (2001)
Ideal geometry (DNA, RNA) : Parkinson et al. (1996)
Validation Pipeline (wwPDB-VP) : 2.23.2

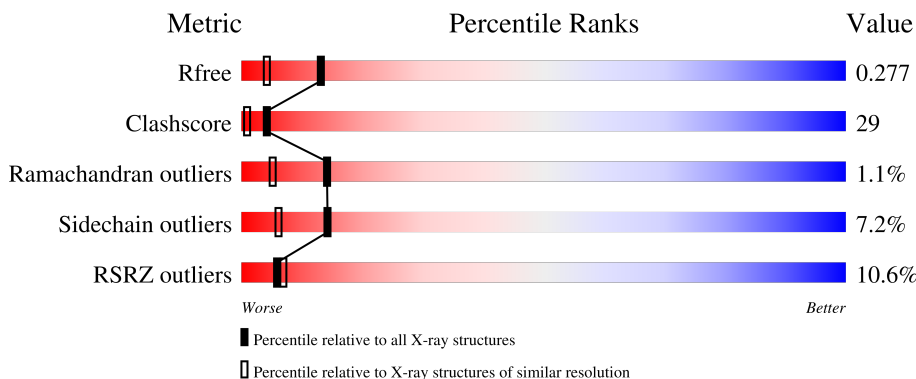
1 Overall quality at a glance

The following experimental techniques were used to determine the structure:

X-RAY DIFFRACTION

The reported resolution of this entry is 1.90 Å.

Percentile scores (ranging between 0-100) for global validation metrics of the entry are shown in the following graphic. The table shows the number of entries on which the scores are based.



Metric	Whole archive (#Entries)	Similar resolution (#Entries, resolution range(Å))
R_{free}	130704	6207 (1.90-1.90)
Clashscore	141614	6847 (1.90-1.90)
Ramachandran outliers	138981	6760 (1.90-1.90)
Sidechain outliers	138945	6760 (1.90-1.90)
RSRZ outliers	127900	6082 (1.90-1.90)

The table below summarises the geometric issues observed across the polymeric chains and their fit to the electron density. The red, orange, yellow and green segments of the lower bar indicate the fraction of residues that contain outliers for ≥ 3 , 2, 1 and 0 types of geometric quality criteria respectively. A grey segment represents the fraction of residues that are not modelled. The numeric value for each fraction is indicated below the corresponding segment, with a dot representing fractions $\leq 5\%$. The upper red bar (where present) indicates the fraction of residues that have poor fit to the electron density. The numeric value is given above the bar.

Mol	Chain	Length	Quality of chain
1	Y	11	
2	X	592	

The following table lists non-polymeric compounds, carbohydrate monomers and non-standard residues in protein, DNA, RNA chains that are outliers for geometric or electron-density-fit criteria:

Mol	Type	Chain	Res	Chirality	Geometry	Clashes	Electron density
4	TMP	X	600	-	-	X	-

2 Entry composition [i](#)

There are 5 unique types of molecules in this entry. The entry contains 5346 atoms, of which 0 are hydrogens and 0 are deuteriums.

In the tables below, the ZeroOcc column contains the number of atoms modelled with zero occupancy, the AltConf column contains the number of residues with at least one atom in alternate conformation and the Trace column contains the number of residues modelled with at most 2 atoms.

- Molecule 1 is a DNA chain called 5'-D(*AP*CP*TP*TP*CP*GP*GP*GP*AP*TP*G)-3'.

Mol	Chain	Residues	Atoms					ZeroOcc	AltConf	Trace
			Total	C	N	O	P			
1	Y	7	126	58	20	41	7	0	0	0

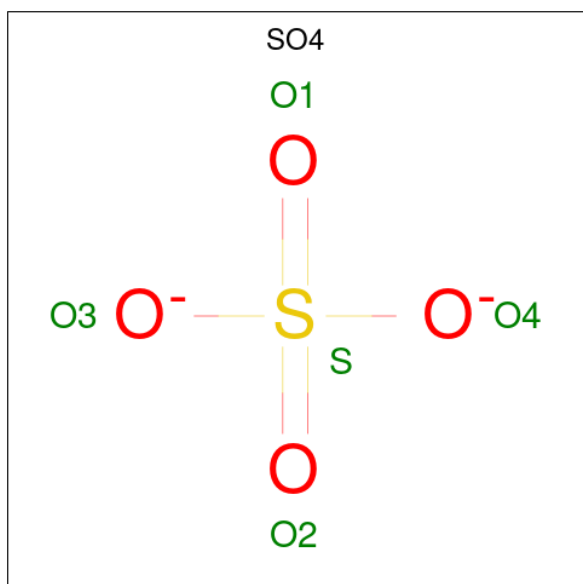
- Molecule 2 is a protein called DNA Topoisomerase I.

Mol	Chain	Residues	Atoms					ZeroOcc	AltConf	Trace
			Total	C	N	O	S			
2	X	561	4621	2897	825	881	18	0	19	0

There are 2 discrepancies between the modelled and reference sequences:

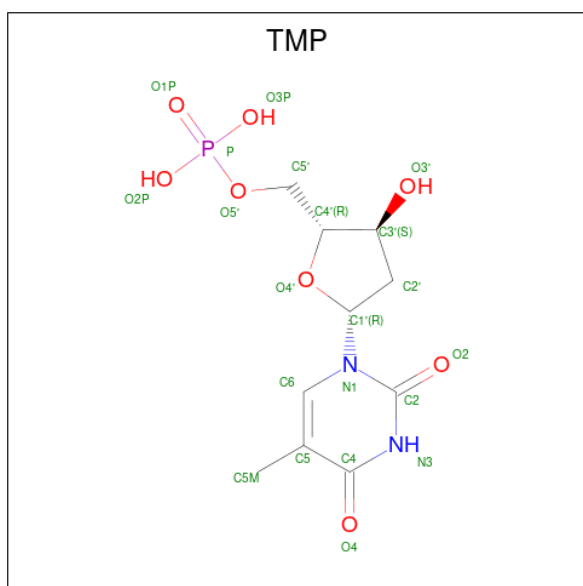
Chain	Residue	Modelled	Actual	Comment	Reference
X	365	ARG	HIS	engineered mutation	UNP P06612
X	549	ASN	SER	SEE REMARK 999	UNP P06612

- Molecule 3 is SULFATE ION (three-letter code: SO4) (formula: O₄S).



Mol	Chain	Residues	Atoms	ZeroOcc	AltConf
3	X	1	Total O S 5 4 1	0	0
3	X	1	Total O S 5 4 1	0	0
3	X	1	Total O S 5 4 1	0	0
3	X	1	Total O S 5 4 1	0	0
3	X	1	Total O S 5 4 1	0	0

- Molecule 4 is THYMIDINE-5'-PHOSPHATE (three-letter code: TMP) (formula: C₁₀H₁₅N₂O₈P).



Mol	Chain	Residues	Atoms	ZeroOcc	AltConf
4	X	1	Total C N O P 21 10 2 8 1	0	0

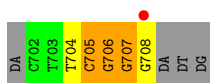
- Molecule 5 is water.

Mol	Chain	Residues	Atoms	ZeroOcc	AltConf
5	Y	19	Total O 19 19	0	0
5	X	534	Total O 534 534	0	0

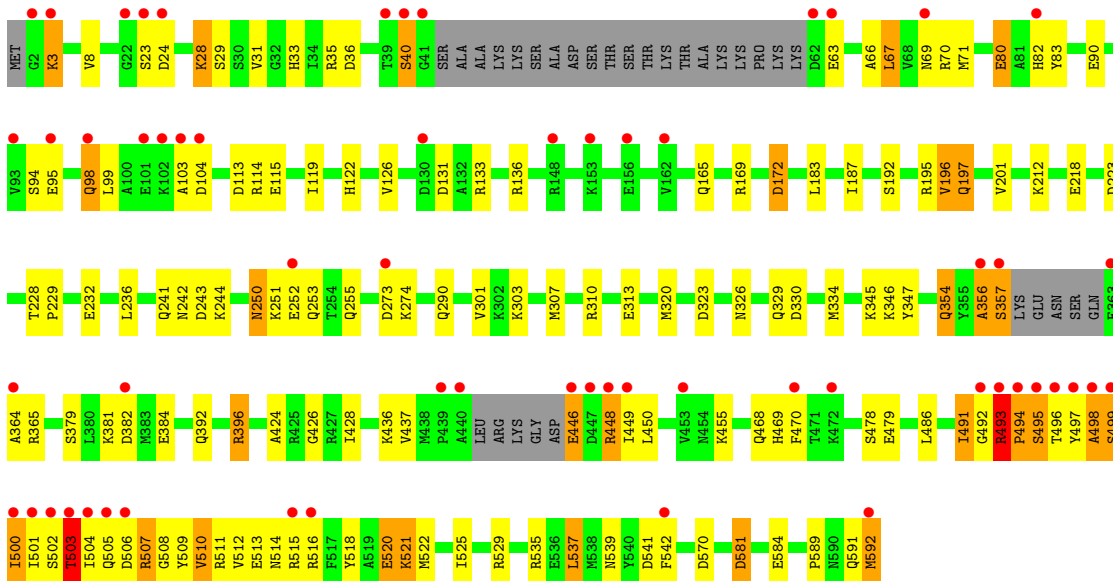
3 Residue-property plots [i](#)

These plots are drawn for all protein, RNA, DNA and oligosaccharide chains in the entry. The first graphic for a chain summarises the proportions of the various outlier classes displayed in the second graphic. The second graphic shows the sequence view annotated by issues in geometry and electron density. Residues are color-coded according to the number of geometric quality criteria for which they contain at least one outlier: green = 0, yellow = 1, orange = 2 and red = 3 or more. A red dot above a residue indicates a poor fit to the electron density ($RSRZ > 2$). Stretches of 2 or more consecutive residues without any outlier are shown as a green connector. Residues present in the sample, but not in the model, are shown in grey.

- Molecule 1: 5'-D(*AP*CP*TP*TP*CP*GP*GP*GP*AP*TP*G)-3'



- Molecule 2: DNA Topoisomerase I



4 Data and refinement statistics

Property	Value	Source
Space group	P 21 21 21	Depositor
Cell constants a, b, c, α , β , γ	63.39Å 79.15Å 141.80Å 90.00° 90.00° 90.00°	Depositor
Resolution (Å)	70.71 – 1.90 35.45 – 1.81	Depositor EDS
% Data completeness (in resolution range)	97.9 (70.71-1.90) 92.0 (35.45-1.81)	Depositor EDS
R_{merge}	0.07	Depositor
R_{sym}	0.06	Depositor
$\langle I/\sigma(I) \rangle$ ¹	8.51 (at 1.81Å)	Xtrriage
Refinement program	REFMAC 5.0, CNS	Depositor
R, R_{free}	0.223 , 0.273 0.233 , 0.277	Depositor DCC
R_{free} test set	5757 reflections (5.10%)	wwPDB-VP
Wilson B-factor (Å ²)	27.9	Xtrriage
Anisotropy	0.142	Xtrriage
Bulk solvent k_{sol} (e/Å ³), B_{sol} (Å ²)	0.36 , 47.5	EDS
L-test for twinning ²	$\langle L \rangle = 0.47$, $\langle L^2 \rangle = 0.30$	Xtrriage
Estimated twinning fraction	No twinning to report.	Xtrriage
F_o, F_c correlation	0.93	EDS
Total number of atoms	5346	wwPDB-VP
Average B, all atoms (Å ²)	36.0	wwPDB-VP

Xtrriage's analysis on translational NCS is as follows: *The largest off-origin peak in the Patterson function is 4.17% of the height of the origin peak. No significant pseudotranslation is detected.*

¹Intensities estimated from amplitudes.

²Theoretical values of $\langle |L| \rangle$, $\langle L^2 \rangle$ for acentric reflections are 0.5, 0.333 respectively for untwinned datasets, and 0.375, 0.2 for perfectly twinned datasets.

5 Model quality [i](#)

5.1 Standard geometry [i](#)

Bond lengths and bond angles in the following residue types are not validated in this section: TMP, SO4

The Z score for a bond length (or angle) is the number of standard deviations the observed value is removed from the expected value. A bond length (or angle) with $|Z| > 5$ is considered an outlier worth inspection. RMSZ is the root-mean-square of all Z scores of the bond lengths (or angles).

Mol	Chain	Bond lengths		Bond angles	
		RMSZ	# Z >5	RMSZ	# Z >5
1	Y	0.70	0/139	1.65	5/213 (2.3%)
2	X	0.47	0/4708	0.77	12/6356 (0.2%)
All	All	0.47	0/4847	0.81	17/6569 (0.3%)

There are no bond length outliers.

All (17) bond angle outliers are listed below:

Mol	Chain	Res	Type	Atoms	Z	Observed(°)	Ideal(°)
1	Y	707	DG	P-O3'-C3'	6.96	128.06	119.70
1	Y	706	DG	C4'-C3'-C2'	-6.01	97.69	103.10
1	Y	705	DC	C3'-C2'-C1'	-5.78	95.57	102.50
2	X	243	ASP	CB-CG-OD2	5.78	123.50	118.30
2	X	396	ARG	NE-CZ-NH1	5.61	123.10	120.30
2	X	24	ASP	CB-CG-OD2	5.57	123.31	118.30
2	X	131	ASP	CB-CG-OD2	5.54	123.28	118.30
1	Y	706	DG	O4'-C1'-N9	5.46	111.82	108.00
2	X	36	ASP	CB-CG-OD2	5.40	123.16	118.30
2	X	172	ASP	CB-CG-OD2	5.36	123.12	118.30
2	X	104	ASP	CB-CG-OD2	5.30	123.07	118.30
2	X	581	ASP	CB-CG-OD2	5.21	122.99	118.30
1	Y	705	DC	O4'-C1'-N1	5.18	111.62	108.00
2	X	223	ASP	CB-CG-OD2	5.16	122.95	118.30
2	X	330	ASP	CB-CG-OD2	5.08	122.87	118.30
2	X	570	ASP	CB-CG-OD2	5.02	122.81	118.30
2	X	273	ASP	CB-CG-OD2	5.01	122.81	118.30

There are no chirality outliers.

There are no planarity outliers.

5.2 Too-close contacts [i](#)

In the following table, the Non-H and H(model) columns list the number of non-hydrogen atoms and hydrogen atoms in the chain respectively. The H(added) column lists the number of hydrogen atoms added and optimized by MolProbity. The Clashes column lists the number of clashes within the asymmetric unit, whereas Symm-Clashes lists symmetry-related clashes.

Mol	Chain	Non-H	H(model)	H(added)	Clashes	Symm-Clashes
1	Y	126	0	68	13	0
2	X	4621	0	4575	267	0
3	X	25	0	0	0	0
4	X	21	0	13	18	0
5	X	534	0	0	89	0
5	Y	19	0	0	1	0
All	All	5346	0	4656	279	0

The all-atom clashscore is defined as the number of clashes found per 1000 atoms (including hydrogen atoms). The all-atom clashscore for this structure is 29.

All (279) close contacts within the same asymmetric unit are listed below, sorted by their clash magnitude.

Atom-1	Atom-2	Interatomic distance (Å)	Clash overlap (Å)
2:X:521[B]:LYS:HD2	5:X:1313:HOH:O	1.28	1.31
2:X:504[B]:ILE:CA	2:X:507[B]:ARG:HB3	1.37	1.30
2:X:501[B]:ILE:O	2:X:504[B]:ILE:HB	1.21	1.28
2:X:504[B]:ILE:HA	2:X:507[B]:ARG:CB	1.65	1.25
2:X:493:ARG:HB3	2:X:494[B]:PRO:HD2	1.25	1.13
1:Y:706:DG:N7	2:X:500[B]:ILE:HD11	1.65	1.12
2:X:496[A]:THR:HG23	5:X:1462:HOH:O	1.54	1.08
2:X:504[B]:ILE:HG23	2:X:509:TYR:H	1.18	1.08
2:X:495[B]:SER:HA	2:X:497[B]:TYR:CD1	1.89	1.06
2:X:505[B]:GLN:HE22	2:X:511:ARG:HD3	1.16	1.06
2:X:504[A]:ILE:CG2	2:X:510:VAL:HG22	1.86	1.06
2:X:326:ASN:HB2	5:X:1523:HOH:O	1.58	1.04
2:X:502[B]:SER:C	2:X:504[B]:ILE:H	1.55	1.01
1:Y:706:DG:H2''	1:Y:707:DG:H5''	1.41	1.01
2:X:504[B]:ILE:CG2	2:X:509:TYR:HB2	1.90	1.00
2:X:504[B]:ILE:HA	2:X:507[B]:ARG:HB3	1.02	0.98
2:X:494[B]:PRO:HG3	5:X:1477:HOH:O	1.64	0.97
2:X:504[B]:ILE:HG23	2:X:509:TYR:N	1.78	0.97
2:X:501[B]:ILE:O	2:X:504[B]:ILE:CB	2.13	0.97
2:X:493:ARG:CB	2:X:494[B]:PRO:HD2	1.97	0.94
2:X:502[B]:SER:C	2:X:504[B]:ILE:N	2.12	0.94

Continued on next page...

Continued from previous page...

Atom-1	Atom-2	Interatomic distance (Å)	Clash overlap (Å)
2:X:90:GLU:HB2	5:X:1534:HOH:O	1.68	0.93
2:X:497[B]:TYR:HA	5:X:1469:HOH:O	1.68	0.92
2:X:504[B]:ILE:HG12	2:X:509:TYR:CD2	2.05	0.91
2:X:502[B]:SER:N	5:X:1470:HOH:O	2.03	0.91
2:X:94:SER:HB3	5:X:1538:HOH:O	1.71	0.90
2:X:504[B]:ILE:HG23	2:X:509:TYR:CB	2.01	0.90
2:X:505[B]:GLN:NE2	2:X:511:ARG:HD3	1.86	0.89
2:X:502[B]:SER:O	2:X:504[B]:ILE:N	2.05	0.88
2:X:504[B]:ILE:HG23	2:X:509:TYR:HB2	1.56	0.87
2:X:115:GLU:OE1	2:X:165[B]:GLN:NE2	2.08	0.87
2:X:357:SER:HB3	5:X:1542:HOH:O	1.74	0.87
2:X:504[B]:ILE:HG22	2:X:510:VAL:H	1.38	0.86
2:X:500[B]:ILE:HG23	2:X:503[B]:THR:OG1	1.75	0.86
2:X:504[B]:ILE:HG21	2:X:509:TYR:HB2	1.56	0.86
2:X:495[B]:SER:HA	2:X:497[B]:TYR:CE1	2.11	0.85
2:X:521[B]:LYS:NZ	5:X:1232:HOH:O	2.09	0.84
2:X:504[B]:ILE:CG2	2:X:510:VAL:H	1.90	0.84
2:X:505[B]:GLN:HE22	2:X:511:ARG:CD	1.91	0.84
2:X:504[B]:ILE:CG2	2:X:509:TYR:H	1.91	0.83
2:X:364:ALA:HA	5:X:1476:HOH:O	1.78	0.83
2:X:503[A]:THR:O	2:X:506[A]:ASP:N	2.13	0.81
2:X:504[B]:ILE:HG23	2:X:509:TYR:CA	2.10	0.81
2:X:69:ASN:HB3	5:X:1412:HOH:O	1.81	0.81
2:X:493:ARG:HB3	2:X:494[B]:PRO:CD	2.11	0.81
2:X:505[B]:GLN:NE2	2:X:511:ARG:HB3	1.95	0.80
2:X:195:ARG:CZ	5:X:1515:HOH:O	2.29	0.80
4:X:600:TMP:H1'	5:X:1139:HOH:O	1.82	0.80
2:X:504[A]:ILE:HG22	2:X:510:VAL:HG22	1.61	0.79
2:X:493:ARG:N	2:X:497[B]:TYR:OH	2.16	0.79
1:Y:706:DG:OP1	2:X:496[A]:THR:HG22	1.84	0.78
2:X:539:ASN:HD22	2:X:542:PHE:H	1.32	0.78
2:X:250:ASN:C	2:X:250:ASN:HD22	1.88	0.77
2:X:35:ARG:HE	2:X:122:HIS:HD2	1.34	0.76
2:X:507[A]:ARG:HH11	2:X:507[A]:ARG:HG2	1.49	0.76
2:X:518:TYR:HB3	5:X:1474:HOH:O	1.85	0.76
2:X:290:GLN:NE2	2:X:495[B]:SER:OG	2.20	0.75
2:X:384:GLU:HG3	5:X:1524:HOH:O	1.85	0.74
2:X:192:SER:OG	2:X:507[A]:ARG:HD2	1.88	0.73
2:X:504[B]:ILE:CA	2:X:507[B]:ARG:CB	2.28	0.73
2:X:500[A]:ILE:HG22	2:X:501[A]:ILE:CD1	2.19	0.73
2:X:503[A]:THR:O	2:X:505[A]:GLN:N	2.21	0.73

Continued on next page...

Continued from previous page...

Atom-1	Atom-2	Interatomic distance (Å)	Clash overlap (Å)
1:Y:704:DT:H72	5:X:1177:HOH:O	1.90	0.72
2:X:500[A]:ILE:HG22	2:X:501[A]:ILE:HD12	1.71	0.72
2:X:513:GLU:HG3	5:X:1548:HOH:O	1.89	0.71
2:X:501[A]:ILE:C	5:X:1470:HOH:O	2.28	0.71
2:X:503[A]:THR:O	2:X:504[A]:ILE:C	2.28	0.70
4:X:600:TMP:C1'	5:X:1477:HOH:O	2.39	0.70
2:X:301:VAL:HG22	2:X:479:GLU:OE1	1.91	0.70
2:X:98:GLN:O	2:X:98:GLN:NE2	2.25	0.70
2:X:365:ARG:NH1	4:X:600:TMP:O3'	2.25	0.70
2:X:507[A]:ARG:HG2	2:X:507[A]:ARG:NH1	2.05	0.70
2:X:500[A]:ILE:O	2:X:504[A]:ILE:HD12	1.92	0.69
2:X:493:ARG:HB3	5:X:1462:HOH:O	1.92	0.69
2:X:504[B]:ILE:HA	2:X:507[B]:ARG:CA	2.22	0.69
2:X:66:ALA:O	2:X:70:ARG:HG3	1.93	0.68
2:X:493:ARG:O	2:X:497[B]:TYR:CE1	2.46	0.68
2:X:98:GLN:NE2	2:X:98:GLN:C	2.48	0.67
1:Y:707:DG:H2''	1:Y:708:DG:OP1	1.95	0.66
2:X:504[B]:ILE:O	2:X:507[B]:ARG:N	2.18	0.66
2:X:500[B]:ILE:CG2	2:X:503[B]:THR:OG1	2.43	0.65
2:X:504[A]:ILE:HG21	2:X:510:VAL:HG22	1.76	0.65
2:X:592:MET:SD	5:X:1537:HOH:O	2.53	0.65
1:Y:706:DG:N7	2:X:500[B]:ILE:CD1	2.51	0.65
4:X:600:TMP:C2'	5:X:1477:HOH:O	2.44	0.64
1:Y:704:DT:H3	2:X:169:ARG:HH22	1.44	0.64
2:X:505[B]:GLN:NE2	2:X:511:ARG:CB	2.60	0.64
2:X:195:ARG:NH1	5:X:1515:HOH:O	2.31	0.64
2:X:493:ARG:CB	2:X:494[B]:PRO:CD	2.72	0.64
2:X:504[B]:ILE:CG2	2:X:510:VAL:N	2.61	0.64
2:X:504[B]:ILE:CG2	2:X:509:TYR:N	2.55	0.63
2:X:493:ARG:HG3	2:X:494[A]:PRO:HD2	1.79	0.63
2:X:502[B]:SER:CA	5:X:1470:HOH:O	2.43	0.63
2:X:98:GLN:C	2:X:98:GLN:HE21	2.00	0.63
2:X:505[A]:GLN:HG3	5:X:1470:HOH:O	1.98	0.62
2:X:346:LYS:NZ	5:X:1528:HOH:O	2.33	0.62
2:X:33:HIS:CE1	2:X:119:ILE:HD11	2.35	0.62
2:X:497[B]:TYR:O	2:X:499[B]:SER:N	2.28	0.62
1:Y:705:DC:H4'	2:X:172:ASP:OD2	2.00	0.62
2:X:250:ASN:ND2	2:X:253:GLN:H	1.97	0.62
2:X:356:ALA:HB3	5:X:1495:HOH:O	2.00	0.61
2:X:94:SER:C	5:X:1538:HOH:O	2.38	0.61
2:X:495[B]:SER:HA	2:X:497[B]:TYR:HD1	1.61	0.61

Continued on next page...

Continued from previous page...

Atom-1	Atom-2	Interatomic distance (Å)	Clash overlap (Å)
2:X:323[B]:ASP:OD2	5:X:1279:HOH:O	2.16	0.61
2:X:494[B]:PRO:CD	5:X:1477:HOH:O	2.48	0.61
2:X:504[B]:ILE:HA	2:X:507[B]:ARG:CG	2.30	0.61
2:X:381:LYS:HD3	2:X:381:LYS:N	2.16	0.61
2:X:448:ARG:NH2	5:X:1500:HOH:O	2.34	0.61
2:X:494[B]:PRO:CG	5:X:1477:HOH:O	2.34	0.61
2:X:512:VAL:O	5:X:1529:HOH:O	2.16	0.60
2:X:504[B]:ILE:CG2	2:X:509:TYR:CA	2.79	0.60
2:X:505[B]:GLN:CD	2:X:511:ARG:HB3	2.22	0.60
2:X:493:ARG:CB	5:X:1462:HOH:O	2.50	0.60
2:X:513:GLU:HG2	2:X:514:ASN:HD22	1.67	0.60
2:X:329:GLN:HB2	5:X:1352:HOH:O	2.01	0.59
2:X:504[B]:ILE:CG2	2:X:509:TYR:CB	2.64	0.59
2:X:581:ASP:HB2	2:X:584:GLU:OE2	2.02	0.59
1:Y:706:DG:C2'	1:Y:707:DG:H5''	2.26	0.59
2:X:122:HIS:O	2:X:126:VAL:HG13	2.01	0.59
2:X:90:GLU:C	5:X:1534:HOH:O	2.41	0.59
2:X:507[A]:ARG:HH11	2:X:507[A]:ARG:CG	2.15	0.58
2:X:502[B]:SER:HB3	5:X:1470:HOH:O	2.02	0.58
2:X:195:ARG:NH2	5:X:1146:HOH:O	2.27	0.58
2:X:502[B]:SER:O	2:X:503[B]:THR:C	2.42	0.57
2:X:491:ILE:HD13	2:X:491:ILE:O	2.05	0.57
2:X:581:ASP:OD2	5:X:1239:HOH:O	2.18	0.57
2:X:502[A]:SER:N	5:X:1470:HOH:O	2.37	0.57
2:X:113:ASP:HB2	4:X:600:TMP:H6	1.68	0.57
2:X:518:TYR:CB	5:X:1474:HOH:O	2.50	0.57
2:X:31:VAL:HG12	2:X:31:VAL:O	2.04	0.56
2:X:250:ASN:HD21	2:X:253:GLN:H	1.52	0.55
2:X:500[B]:ILE:O	2:X:503[B]:THR:HB	2.06	0.55
2:X:113:ASP:HB2	4:X:600:TMP:C1'	2.36	0.55
2:X:251:LYS:O	2:X:255:GLN:HG3	2.06	0.55
2:X:504[B]:ILE:C	2:X:507[B]:ARG:N	2.60	0.55
2:X:365:ARG:NH1	4:X:600:TMP:C3'	2.69	0.55
2:X:347:TYR:CZ	2:X:436:LYS:HD2	2.42	0.55
2:X:446:GLU:OE1	2:X:446:GLU:O	2.24	0.55
2:X:505[B]:GLN:CD	2:X:511:ARG:CB	2.75	0.55
2:X:535:ARG:CD	5:X:1526:HOH:O	2.55	0.55
2:X:493:ARG:HG3	2:X:494[A]:PRO:CD	2.37	0.55
4:X:600:TMP:H5'1	5:X:1433:HOH:O	2.06	0.54
2:X:80:GLU:OE1	2:X:82:HIS:NE2	2.40	0.54
2:X:3:LYS:HD2	2:X:3:LYS:N	2.23	0.54

Continued on next page...

Continued from previous page...

Atom-1	Atom-2	Interatomic distance (Å)	Clash overlap (Å)
2:X:521[B]:LYS:CD	5:X:1313:HOH:O	2.10	0.54
2:X:495[B]:SER:C	2:X:496[B]:THR:HG23	2.27	0.54
2:X:537:LEU:HD23	5:X:1115:HOH:O	2.07	0.54
2:X:513:GLU:HG2	2:X:514:ASN:ND2	2.23	0.53
2:X:35:ARG:HG2	2:X:83:TYR:HB3	1.91	0.53
2:X:499[A]:SER:HB2	5:X:1163:HOH:O	2.09	0.53
2:X:114:ARG:HG3	4:X:600:TMP:H5'2	1.90	0.53
2:X:503[A]:THR:HG21	2:X:507[A]:ARG:HH12	1.73	0.53
2:X:513:GLU:HB2	5:X:1529:HOH:O	2.09	0.53
2:X:504[B]:ILE:HA	2:X:507[B]:ARG:C	2.30	0.53
2:X:468:GLN:HE21	2:X:470:PHE:HE1	1.57	0.52
2:X:511:ARG:NE	5:X:1474:HOH:O	2.26	0.52
2:X:379:SER:O	2:X:381:LYS:HD3	2.10	0.52
2:X:525:ILE:O	2:X:529:ARG:HG2	2.10	0.52
1:Y:706:DG:OP1	2:X:496[A]:THR:CG2	2.56	0.52
2:X:35:ARG:HE	2:X:122:HIS:CD2	2.21	0.51
4:X:600:TMP:H2'2	4:X:600:TMP:O2	2.09	0.51
2:X:218:GLU:HG3	2:X:470:PHE:CE1	2.45	0.51
2:X:236:LEU:HD23	2:X:424:ALA:HB2	1.92	0.51
2:X:501[A]:ILE:O	2:X:501[A]:ILE:HG22	2.09	0.51
2:X:511:ARG:NH2	5:X:1474:HOH:O	2.24	0.51
2:X:113:ASP:HB2	4:X:600:TMP:C6	2.46	0.50
2:X:503[B]:THR:HG22	2:X:507[B]:ARG:HB2	1.94	0.50
2:X:392:GLN:HG2	5:X:1361:HOH:O	2.10	0.50
2:X:493:ARG:CG	2:X:494[B]:PRO:HD2	2.42	0.50
2:X:502[B]:SER:CB	5:X:1470:HOH:O	2.59	0.50
2:X:95:GLU:O	2:X:98:GLN:HG3	2.12	0.49
2:X:504[B]:ILE:C	2:X:507[B]:ARG:H	2.14	0.49
2:X:492:GLY:C	2:X:497[B]:TYR:OH	2.50	0.49
2:X:500[B]:ILE:O	2:X:503[B]:THR:CB	2.61	0.49
2:X:365:ARG:NE	5:X:1450:HOH:O	2.45	0.49
2:X:310:ARG:NH2	2:X:384:GLU:OE1	2.45	0.49
2:X:491:ILE:HD13	2:X:491:ILE:C	2.33	0.49
2:X:98:GLN:NE2	5:X:1305:HOH:O	2.45	0.49
2:X:493:ARG:O	2:X:495[B]:SER:N	2.46	0.49
2:X:535:ARG:HD2	5:X:1526:HOH:O	2.11	0.48
2:X:446:GLU:HG3	5:X:1206:HOH:O	2.13	0.48
2:X:103:ALA:O	2:X:133[B]:ARG:NH2	2.30	0.48
2:X:495[A]:SER:HA	5:X:1518:HOH:O	2.12	0.48
2:X:539:ASN:HD21	2:X:541:ASP:HB2	1.78	0.48
5:Y:1368:HOH:O	2:X:500[B]:ILE:HG12	2.14	0.48

Continued on next page...

Continued from previous page...

Atom-1	Atom-2	Interatomic distance (Å)	Clash overlap (Å)
2:X:503[A]:THR:CG2	2:X:507[A]:ARG:HH12	2.27	0.48
2:X:539:ASN:ND2	2:X:542:PHE:H	2.07	0.48
2:X:486:LEU:HD22	2:X:491:ILE:HD12	1.96	0.47
2:X:521[A]:LYS:HD2	2:X:522:MET:N	2.29	0.47
4:X:600:TMP:H2'1	5:X:1405:HOH:O	2.15	0.47
2:X:365:ARG:CZ	5:X:1450:HOH:O	2.62	0.47
2:X:469:HIS:O	2:X:470:PHE:CD1	2.67	0.47
2:X:499[B]:SER:OG	2:X:500[B]:ILE:N	2.47	0.47
2:X:496[B]:THR:O	5:X:1469:HOH:O	2.18	0.47
2:X:228:THR:HB	2:X:229:PRO:HD2	1.96	0.47
2:X:323[B]:ASP:CG	5:X:1279:HOH:O	2.52	0.47
2:X:504[B]:ILE:CD1	2:X:509:TYR:HD2	2.28	0.47
4:X:600:TMP:C2'	5:X:1405:HOH:O	2.63	0.47
2:X:365:ARG:HH12	4:X:600:TMP:H4'	1.80	0.47
2:X:589:PRO:HB2	2:X:591:GLN:HG2	1.96	0.47
4:X:600:TMP:H2'1	5:X:1092:HOH:O	2.14	0.46
2:X:228:THR:HB	2:X:229:PRO:CD	2.45	0.46
2:X:241:GLN:HG2	2:X:242:ASN:HD22	1.80	0.46
2:X:503[A]:THR:C	2:X:505[A]:GLN:N	2.65	0.46
2:X:446:GLU:O	2:X:446:GLU:CG	2.62	0.46
2:X:196:VAL:CG1	2:X:197:GLN:N	2.79	0.46
2:X:426:GLY:HA3	2:X:450:LEU:HG	1.98	0.46
2:X:498[B]:ALA:HA	2:X:501[B]:ILE:HD12	1.97	0.46
2:X:354:GLN:OE1	5:X:1495:HOH:O	2.21	0.46
2:X:365:ARG:HH12	4:X:600:TMP:C4'	2.29	0.45
2:X:513:GLU:CB	5:X:1529:HOH:O	2.64	0.45
2:X:493:ARG:O	2:X:494[B]:PRO:C	2.54	0.45
2:X:250:ASN:C	2:X:250:ASN:ND2	2.61	0.45
2:X:365:ARG:HH12	4:X:600:TMP:C3'	2.30	0.45
1:Y:706:DG:OP2	2:X:496[B]:THR:OG1	2.35	0.45
2:X:8:VAL:O	2:X:29:SER:HA	2.16	0.45
2:X:23:SER:N	5:X:1344:HOH:O	2.49	0.45
2:X:241:GLN:HG2	2:X:242:ASN:ND2	2.32	0.45
2:X:448:ARG:HA	5:X:1510:HOH:O	2.17	0.45
2:X:232:GLU:N	5:X:1484:HOH:O	2.49	0.45
2:X:448:ARG:CZ	5:X:1500:HOH:O	2.63	0.45
2:X:504[B]:ILE:CA	2:X:507[B]:ARG:CA	2.87	0.44
2:X:505[B]:GLN:HA	2:X:508:GLY:HA2	1.98	0.44
2:X:511:ARG:N	2:X:520:GLU:OE1	2.49	0.44
2:X:581:ASP:OD1	2:X:584:GLU:OE2	2.35	0.44
2:X:379:SER:O	2:X:381:LYS:CD	2.65	0.44

Continued on next page...

Continued from previous page...

Atom-1	Atom-2	Interatomic distance (Å)	Clash overlap (Å)
2:X:503[A]:THR:CG2	2:X:507[A]:ARG:NH1	2.80	0.44
2:X:28:LYS:HE2	2:X:28:LYS:HA	1.98	0.44
2:X:40:SER:HA	5:X:1440:HOH:O	2.16	0.44
2:X:496[A]:THR:C	2:X:498[A]:ALA:H	2.19	0.44
2:X:303:LYS:HE2	2:X:307:MET:HE1	2.00	0.44
2:X:183:LEU:HD22	2:X:187:ILE:HD12	1.99	0.44
2:X:493:ARG:O	2:X:497[B]:TYR:HE1	1.99	0.44
2:X:500[A]:ILE:O	2:X:504[A]:ILE:CD1	2.64	0.43
2:X:115:GLU:HB2	4:X:600:TMP:C5M	2.48	0.43
2:X:345:LYS:NZ	5:X:1506:HOH:O	2.26	0.43
2:X:94:SER:CB	5:X:1538:HOH:O	2.48	0.43
2:X:196:VAL:HG23	5:X:1391:HOH:O	2.18	0.43
2:X:511:ARG:NH1	5:X:1473:HOH:O	2.51	0.43
2:X:504[B]:ILE:HG12	2:X:507[B]:ARG:HG3	1.99	0.43
2:X:521[A]:LYS:HE3	5:X:1232:HOH:O	2.18	0.43
2:X:218:GLU:HB2	2:X:470:PHE:CZ	2.54	0.43
2:X:494[B]:PRO:HG3	5:X:1139:HOH:O	2.18	0.43
2:X:326:ASN:CB	5:X:1523:HOH:O	2.38	0.43
2:X:40:SER:CB	5:X:1440:HOH:O	2.66	0.43
1:Y:706:DG:P	2:X:496[A]:THR:HG22	2.59	0.43
2:X:497[B]:TYR:C	2:X:499[B]:SER:H	2.19	0.43
2:X:313:GLU:CD	5:X:1501:HOH:O	2.57	0.42
2:X:495[B]:SER:O	2:X:496[B]:THR:HG23	2.19	0.42
2:X:67:LEU:HD22	2:X:71:MET:HG3	2.02	0.42
2:X:252:GLU:HG3	5:X:1335:HOH:O	2.20	0.42
2:X:493:ARG:O	2:X:497[B]:TYR:CZ	2.72	0.42
2:X:496[A]:THR:N	5:X:1462:HOH:O	2.52	0.42
2:X:505[B]:GLN:NE2	2:X:511:ARG:CD	2.66	0.42
2:X:500[A]:ILE:HG22	2:X:501[A]:ILE:CG1	2.49	0.42
2:X:28:LYS:CE	5:X:1135:HOH:O	2.68	0.42
2:X:493:ARG:HG2	5:X:1373:HOH:O	2.20	0.42
2:X:232:GLU:HG3	5:X:1484:HOH:O	2.19	0.42
2:X:201:VAL:CG2	2:X:504[B]:ILE:HD13	2.50	0.41
2:X:496[A]:THR:CG2	5:X:1462:HOH:O	2.36	0.41
2:X:505[B]:GLN:CD	2:X:511:ARG:HB2	2.41	0.41
2:X:505[B]:GLN:OE1	2:X:511:ARG:HB2	2.19	0.41
2:X:379:SER:O	2:X:381:LYS:NZ	2.45	0.41
2:X:504[B]:ILE:CG1	2:X:507[B]:ARG:HG3	2.50	0.41
2:X:513:GLU:CG	5:X:1548:HOH:O	2.59	0.41
2:X:521[A]:LYS:HG3	5:X:1313:HOH:O	2.19	0.41
2:X:329:GLN:CB	5:X:1352:HOH:O	2.65	0.41

Continued on next page...

Continued from previous page...

Atom-1	Atom-2	Interatomic distance (Å)	Clash overlap (Å)
1:Y:706:DG:C5	2:X:500[B]:ILE:HD11	2.48	0.41
2:X:356:ALA:O	2:X:357:SER:C	2.59	0.41
2:X:392:GLN:HE21	2:X:392:GLN:HA	1.86	0.41
2:X:455:LYS:CE	5:X:1536:HOH:O	2.68	0.41
2:X:428:ILE:HG12	2:X:449:ILE:HG22	2.02	0.41
2:X:504[B]:ILE:HG12	2:X:509:TYR:HD2	1.74	0.41
2:X:495[B]:SER:CA	2:X:497[B]:TYR:CD1	2.82	0.41
2:X:504[B]:ILE:CG1	2:X:509:TYR:CD2	2.90	0.41
2:X:505[A]:GLN:HA	2:X:510:VAL:O	2.21	0.41
2:X:396:ARG:NH1	2:X:437:VAL:O	2.53	0.40
2:X:478:SER:HB3	2:X:516:ARG:HH21	1.86	0.40

There are no symmetry-related clashes.

5.3 Torsion angles [i](#)

5.3.1 Protein backbone [i](#)

In the following table, the Percentiles column shows the percent Ramachandran outliers of the chain as a percentile score with respect to all X-ray entries followed by that with respect to entries of similar resolution.

The Analysed column shows the number of residues for which the backbone conformation was analysed, and the total number of residues.

Mol	Chain	Analysed	Favoured	Allowed	Outliers	Percentiles
2	X	572/592 (97%)	547 (96%)	15 (3%)	10 (2%)	9 2

All (10) Ramachandran outliers are listed below:

Mol	Chain	Res	Type
2	X	356	ALA
2	X	495[A]	SER
2	X	495[B]	SER
2	X	498[A]	ALA
2	X	498[B]	ALA
2	X	503[A]	THR
2	X	503[B]	THR
2	X	493	ARG
2	X	494[A]	PRO
2	X	494[B]	PRO

5.3.2 Protein sidechains [i](#)

In the following table, the Percentiles column shows the percent sidechain outliers of the chain as a percentile score with respect to all X-ray entries followed by that with respect to entries of similar resolution.

The Analysed column shows the number of residues for which the sidechain conformation was analysed, and the total number of residues.

Mol	Chain	Analysed	Rotameric	Outliers	Percentiles
2	X	493/501 (98%)	454 (92%)	39 (8%)	12 5

All (39) residues with a non-rotameric sidechain are listed below:

Mol	Chain	Res	Type
2	X	3	LYS
2	X	28	LYS
2	X	40	SER
2	X	63	GLU
2	X	67	LEU
2	X	80	GLU
2	X	98	GLN
2	X	99	LEU
2	X	136	ARG
2	X	196	VAL
2	X	197	GLN
2	X	212	LYS
2	X	244	LYS
2	X	250	ASN
2	X	274	LYS
2	X	320	MET
2	X	334	MET
2	X	354	GLN
2	X	357	SER
2	X	382	ASP
2	X	446	GLU
2	X	448	ARG
2	X	491	ILE
2	X	493	ARG
2	X	499[A]	SER
2	X	499[B]	SER
2	X	500[A]	ILE
2	X	500[B]	ILE
2	X	503[A]	THR
2	X	503[B]	THR

Continued on next page...

Continued from previous page...

Mol	Chain	Res	Type
2	X	507[A]	ARG
2	X	507[B]	ARG
2	X	510	VAL
2	X	515	ARG
2	X	520	GLU
2	X	521[A]	LYS
2	X	521[B]	LYS
2	X	537	LEU
2	X	592	MET

Sometimes sidechains can be flipped to improve hydrogen bonding and reduce clashes. All (14) such sidechains are listed below:

Mol	Chain	Res	Type
2	X	69	ASN
2	X	78	ASN
2	X	98	GLN
2	X	122	HIS
2	X	241	GLN
2	X	242	ASN
2	X	250	ASN
2	X	354	GLN
2	X	388	GLN
2	X	392	GLN
2	X	514	ASN
2	X	539	ASN
2	X	545	GLN
2	X	548	ASN

5.3.3 RNA [i](#)

There are no RNA molecules in this entry.

5.4 Non-standard residues in protein, DNA, RNA chains [i](#)

There are no non-standard protein/DNA/RNA residues in this entry.

5.5 Carbohydrates [i](#)

There are no monosaccharides in this entry.

5.6 Ligand geometry

6 ligands are modelled in this entry.

In the following table, the Counts columns list the number of bonds (or angles) for which Mogul statistics could be retrieved, the number of bonds (or angles) that are observed in the model and the number of bonds (or angles) that are defined in the Chemical Component Dictionary. The Link column lists molecule types, if any, to which the group is linked. The Z score for a bond length (or angle) is the number of standard deviations the observed value is removed from the expected value. A bond length (or angle) with $|Z| > 2$ is considered an outlier worth inspection. RMSZ is the root-mean-square of all Z scores of the bond lengths (or angles).

Mol	Type	Chain	Res	Link	Bond lengths			Bond angles		
					Counts	RMSZ	# Z > 2	Counts	RMSZ	# Z > 2
3	SO4	X	2008	-	4,4,4	0.14	0	6,6,6	0.08	0
3	SO4	X	2005	-	4,4,4	0.15	0	6,6,6	0.09	0
3	SO4	X	2004	-	4,4,4	0.15	0	6,6,6	0.07	0
3	SO4	X	2007	-	4,4,4	0.16	0	6,6,6	0.12	0
4	TMP	X	600	-	19,22,22	1.23	2 (10%)	23,33,33	3.24	4 (17%)
3	SO4	X	2002	-	4,4,4	0.13	0	6,6,6	0.21	0

In the following table, the Chirals column lists the number of chiral outliers, the number of chiral centers analysed, the number of these observed in the model and the number defined in the Chemical Component Dictionary. Similar counts are reported in the Torsion and Rings columns. '2' means no outliers of that kind were identified.

Mol	Type	Chain	Res	Link	Chirals	Torsions	Rings
4	TMP	X	600	-	-	3/7/22/22	0/2/2/2

All (2) bond length outliers are listed below:

Mol	Chain	Res	Type	Atoms	Z	Observed(Å)	Ideal(Å)
4	X	600	TMP	C4-N3	3.35	1.38	1.33
4	X	600	TMP	C6-C5	-2.65	1.32	1.40

All (4) bond angle outliers are listed below:

Mol	Chain	Res	Type	Atoms	Z	Observed(°)	Ideal(°)
4	X	600	TMP	C4-N3-C2	14.68	127.53	115.14
4	X	600	TMP	C2'-C1'-N1	2.78	120.67	114.27
4	X	600	TMP	C5-C6-N1	2.17	124.54	122.19
4	X	600	TMP	O3P-P-O1P	2.01	118.53	110.68

There are no chirality outliers.

All (3) torsion outliers are listed below:

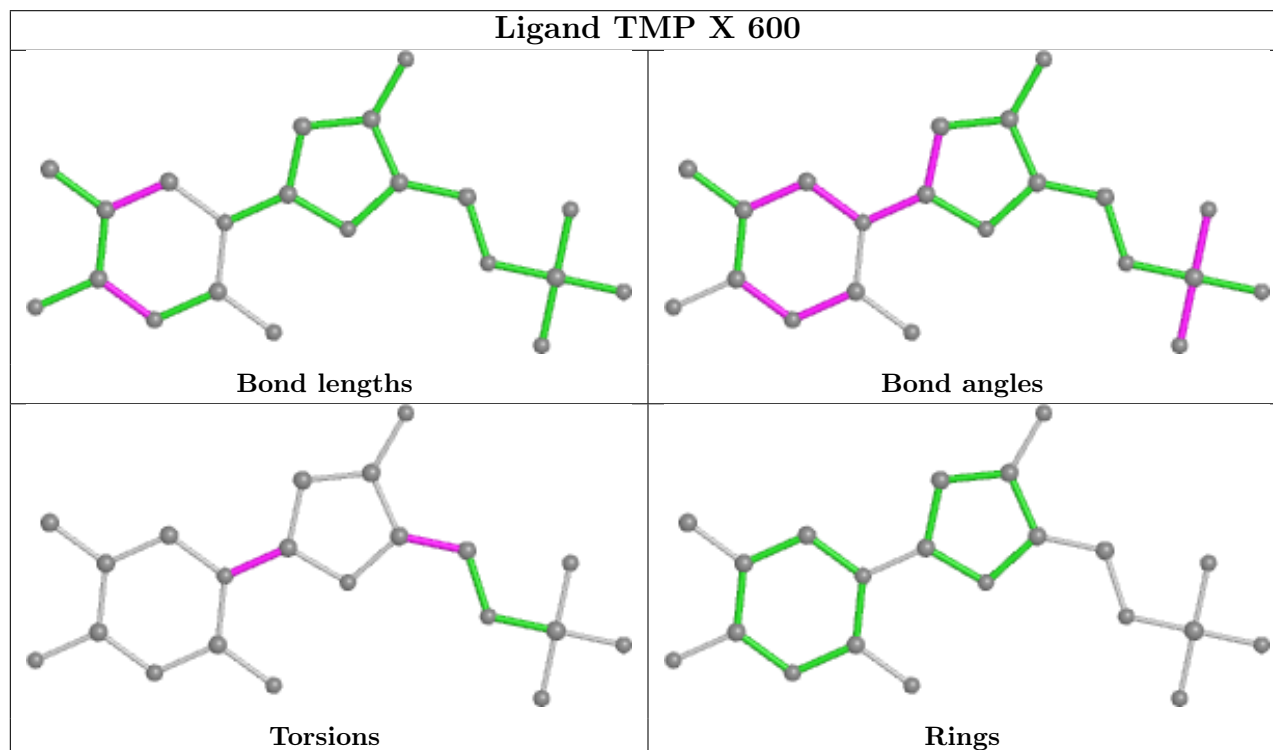
Mol	Chain	Res	Type	Atoms
4	X	600	TMP	O4'-C1'-N1-C6
4	X	600	TMP	O4'-C4'-C5'-O5'
4	X	600	TMP	C3'-C4'-C5'-O5'

There are no ring outliers.

1 monomer is involved in 18 short contacts:

Mol	Chain	Res	Type	Clashes	Symm-Clashes
4	X	600	TMP	18	0

The following is a two-dimensional graphical depiction of Mogul quality analysis of bond lengths, bond angles, torsion angles, and ring geometry for all instances of the Ligand of Interest. In addition, ligands with molecular weight > 250 and outliers as shown on the validation Tables will also be included. For torsion angles, if less than 5% of the Mogul distribution of torsion angles is within 10 degrees of the torsion angle in question, then that torsion angle is considered an outlier. Any bond that is central to one or more torsion angles identified as an outlier by Mogul will be highlighted in the graph. For rings, the root-mean-square deviation (RMSD) between the ring in question and similar rings identified by Mogul is calculated over all ring torsion angles. If the average RMSD is greater than 60 degrees and the minimal RMSD between the ring in question and any Mogul-identified rings is also greater than 60 degrees, then that ring is considered an outlier. The outliers are highlighted in purple. The color gray indicates Mogul did not find sufficient equivalents in the CSD to analyse the geometry.



5.7 Other polymers [i](#)

There are no such residues in this entry.

5.8 Polymer linkage issues [i](#)

There are no chain breaks in this entry.

6 Fit of model and data [i](#)

6.1 Protein, DNA and RNA chains [i](#)

In the following table, the column labelled '#RSRZ > 2' contains the number (and percentage) of RSRZ outliers, followed by percent RSRZ outliers for the chain as percentile scores relative to all X-ray entries and entries of similar resolution. The OWAB column contains the minimum, median, 95th percentile and maximum values of the occupancy-weighted average B-factor per residue. The column labelled 'Q < 0.9' lists the number of (and percentage) of residues with an average occupancy less than 0.9.

Mol	Chain	Analysed	<RSRZ>	#RSRZ>2	OWAB(Å ²)	Q<0.9
1	Y	7/11 (63%)	1.00	1 (14%) 2 2	38, 48, 74, 79	0
2	X	561/592 (94%)	0.68	59 (10%) 6 7	15, 32, 54, 69	0
All	All	568/603 (94%)	0.68	60 (10%) 6 7	15, 32, 56, 79	0

All (60) RSRZ outliers are listed below:

Mol	Chain	Res	Type	RSRZ
2	X	500[A]	ILE	10.7
2	X	503[A]	THR	7.8
2	X	495[A]	SER	7.6
2	X	2	GLY	6.4
2	X	440	ALA	6.3
2	X	364	ALA	6.1
2	X	357	SER	6.0
2	X	41	GLY	5.9
2	X	497[A]	TYR	5.6
2	X	496[A]	THR	5.5
2	X	499[A]	SER	5.5
2	X	504[A]	ILE	5.4
2	X	501[A]	ILE	5.3
2	X	62	ASP	5.0
2	X	494[A]	PRO	4.9
2	X	363	GLU	4.6
2	X	40	SER	4.6
2	X	23	SER	4.6
2	X	498[A]	ALA	4.5
2	X	470	PHE	4.4
2	X	447	ASP	4.4
2	X	446	GLU	4.3
1	Y	708	DG	4.1
2	X	356	ALA	4.1

Continued on next page...

Continued from previous page...

Mol	Chain	Res	Type	RSRZ
2	X	104	ASP	3.9
2	X	98	GLN	3.8
2	X	502[A]	SER	3.8
2	X	24	ASP	3.7
2	X	506[A]	ASP	3.7
2	X	273	ASP	3.6
2	X	102	LYS	3.4
2	X	448	ARG	3.4
2	X	3	LYS	3.3
2	X	505[A]	GLN	3.3
2	X	63	GLU	3.2
2	X	515	ARG	3.1
2	X	39	THR	3.0
2	X	101	GLU	2.9
2	X	103	ALA	2.7
2	X	493	ARG	2.7
2	X	592	MET	2.7
2	X	542	PHE	2.7
2	X	439	PRO	2.7
2	X	95	GLU	2.6
2	X	82	HIS	2.5
2	X	156	GLU	2.5
2	X	69	ASN	2.5
2	X	492	GLY	2.5
2	X	453	VAL	2.3
2	X	472	LYS	2.3
2	X	22	GLY	2.2
2	X	449	ILE	2.2
2	X	93	VAL	2.2
2	X	153	LYS	2.2
2	X	382	ASP	2.2
2	X	148	ARG	2.1
2	X	162	VAL	2.1
2	X	516	ARG	2.0
2	X	130	ASP	2.0
2	X	252	GLU	2.0

6.2 Non-standard residues in protein, DNA, RNA chains [i](#)

There are no non-standard protein/DNA/RNA residues in this entry.

6.3 Carbohydrates [i](#)

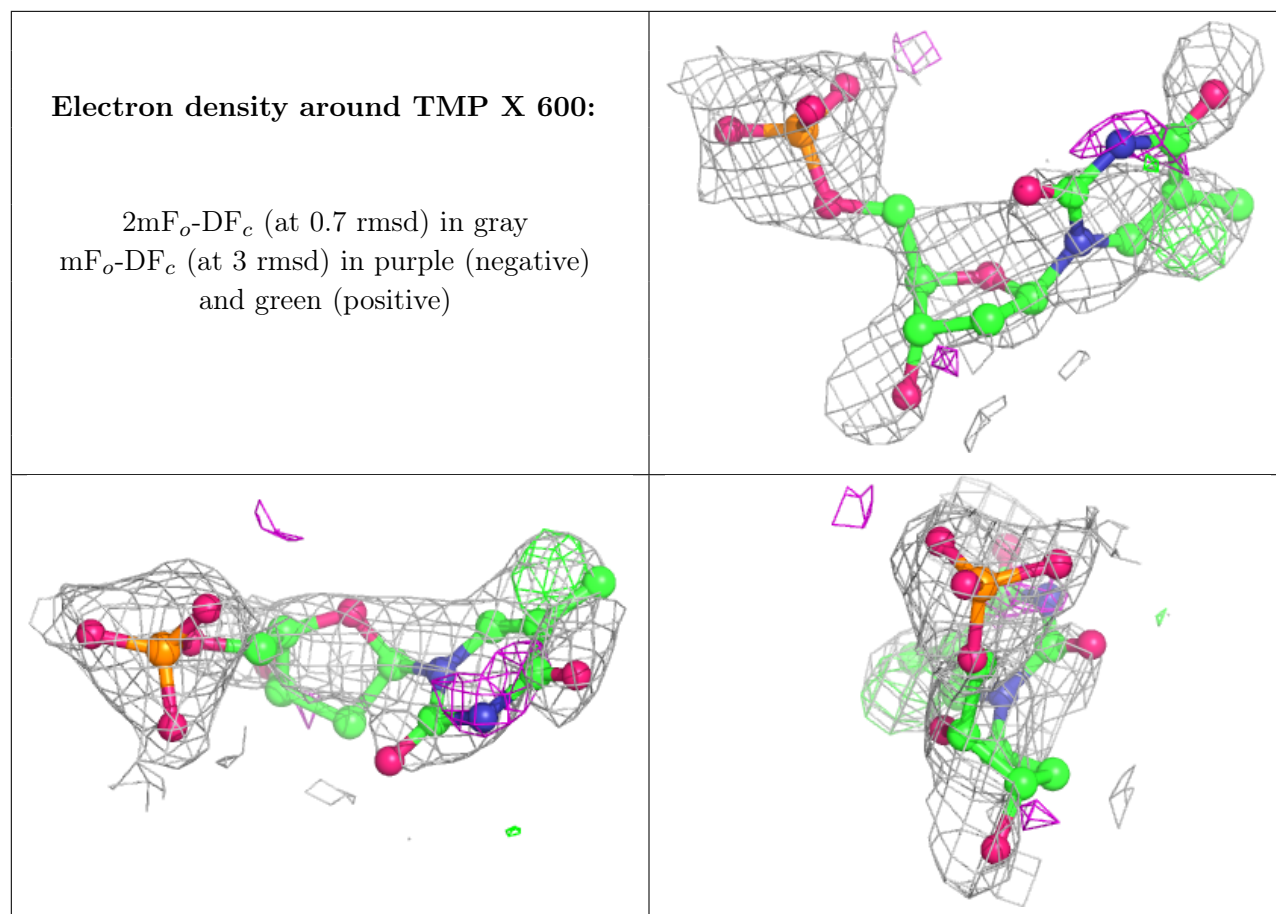
There are no monosaccharides in this entry.

6.4 Ligands [i](#)

In the following table, the Atoms column lists the number of modelled atoms in the group and the number defined in the chemical component dictionary. The B-factors column lists the minimum, median, 95th percentile and maximum values of B factors of atoms in the group. The column labelled 'Q< 0.9' lists the number of atoms with occupancy less than 0.9.

Mol	Type	Chain	Res	Atoms	RSCC	RSR	B-factors(\AA^2)	Q<0.9
3	SO4	X	2008	5/5	0.47	0.34	89,89,90,90	0
4	TMP	X	600	21/21	0.75	0.27	62,67,68,69	0
3	SO4	X	2004	5/5	0.78	0.22	72,72,73,73	0
3	SO4	X	2005	5/5	0.91	0.27	65,66,66,66	0
3	SO4	X	2002	5/5	0.95	0.17	59,59,60,60	0
3	SO4	X	2007	5/5	0.97	0.09	39,40,41,41	0

The following is a graphical depiction of the model fit to experimental electron density of all instances of the Ligand of Interest. In addition, ligands with molecular weight > 250 and outliers as shown on the geometry validation Tables will also be included. Each fit is shown from different orientation to approximate a three-dimensional view.



6.5 Other polymers [i](#)

There are no such residues in this entry.