



# wwPDB X-ray Structure Validation Summary Report ⓘ

May 14, 2020 – 03:50 pm BST

PDB ID : 1MFI  
Title : CRYSTAL STRUCTURE OF MACROPHAGE MIGRATION INHIBITORY FACTOR COMPLEXED WITH (E)-2-FLUORO-P-HYDROXYCINNAMATE  
Authors : Taylor, A.B.; Johnson Jr., W.H.; Czerwinski, R.M.; Whitman, C.P.; Hackert, M.L.  
Deposited on : 1998-08-12  
Resolution : 1.80 Å(reported)

This is a wwPDB X-ray Structure Validation Summary Report for a publicly released PDB entry.

We welcome your comments at [validation@mail.wwpdb.org](mailto:validation@mail.wwpdb.org)

A user guide is available at

<https://www.wwpdb.org/validation/2017/XrayValidationReportHelp>

with specific help available everywhere you see the ⓘ symbol.

---

The following versions of software and data (see [references ⓘ](#)) were used in the production of this report:

MolProbity : 4.02b-467  
Mogul : 1.8.5 (274361), CSD as541be (2020)  
Xtriage (Phenix) : **NOT EXECUTED**  
EDS : **NOT EXECUTED**  
Percentile statistics : 20191225.v01 (using entries in the PDB archive December 25th 2019)  
Ideal geometry (proteins) : Engh & Huber (2001)  
Ideal geometry (DNA, RNA) : Parkinson et al. (1996)  
Validation Pipeline (wwPDB-VP) : 2.11

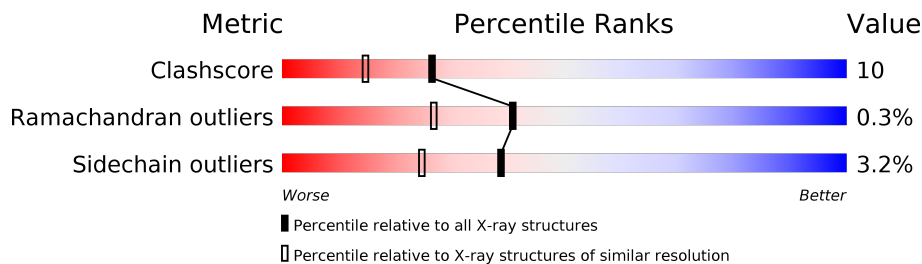
# 1 Overall quality at a glance

The following experimental techniques were used to determine the structure:

*X-RAY DIFFRACTION*

The reported resolution of this entry is 1.80 Å.

Percentile scores (ranging between 0-100) for global validation metrics of the entry are shown in the following graphic. The table shows the number of entries on which the scores are based.



Metric	Whole archive (#Entries)	Similar resolution (#Entries, resolution range(Å))
Clashscore	141614	6793 (1.80-1.80)
Ramachandran outliers	138981	6697 (1.80-1.80)
Sidechain outliers	138945	6696 (1.80-1.80)

The table below summarises the geometric issues observed across the polymeric chains and their fit to the electron density. The red, orange, yellow and green segments on the lower bar indicate the fraction of residues that contain outliers for  $\geq 3$ , 2, 1 and 0 types of geometric quality criteria respectively. A grey segment represents the fraction of residues that are not modelled. The numeric value for each fraction is indicated below the corresponding segment, with a dot representing fractions  $\leq 5\%$ .

Note EDS was not executed.

Mol	Chain	Length	Quality of chain
1	A	114	
1	B	114	
1	C	114	

The following table lists non-polymeric compounds, carbohydrate monomers and non-standard residues in protein, DNA, RNA chains that are outliers for geometric or electron-density-fit criteria:

Mol	Type	Chain	Res	Chirality	Geometry	Clashes	Electron density
2	FHC	B	116	-	-	X	-
2	FHC	C	117	-	-	X	-

## 2 Entry composition [i](#)

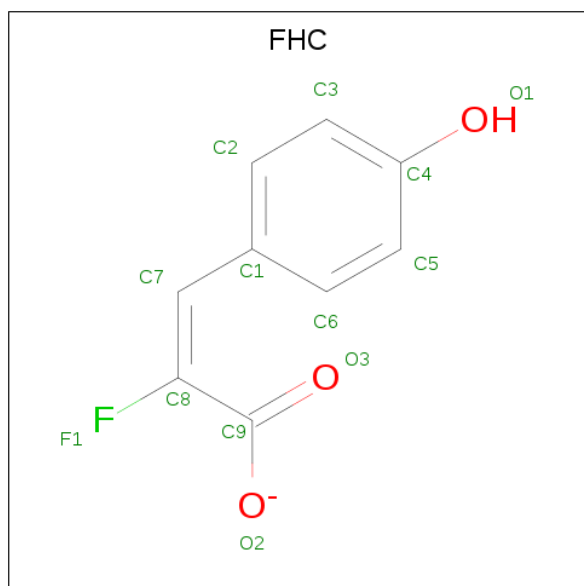
There are 3 unique types of molecules in this entry. The entry contains 2739 atoms, of which 0 are hydrogens and 0 are deuteriums.

In the tables below, the ZeroOcc column contains the number of atoms modelled with zero occupancy, the AltConf column contains the number of residues with at least one atom in alternate conformation and the Trace column contains the number of residues modelled with at most 2 atoms.

- Molecule 1 is a protein called PROTEIN (MACROPHAGE MIGRATION INHIBITORY FACTOR).

Mol	Chain	Residues	Atoms					ZeroOcc	AltConf	Trace
			Total	C	N	O	S			
1	A	114	Total 869	C 548	N 151	O 164	S 6	0	0	0
1	B	114	Total 869	C 548	N 151	O 164	S 6	0	0	0
1	C	114	Total 869	C 548	N 151	O 164	S 6	0	0	0

- Molecule 2 is 2-FLUORO-3-(4-HYDROXYPHENYL)-2E-PROPENEOATE (three-letter code: FHC) (formula: C<sub>9</sub>H<sub>6</sub>F<sub>1</sub>O<sub>3</sub>).



Mol	Chain	Residues	Atoms				ZeroOcc	AltConf
			Total	C	F	O		
2	A	1	Total 13	C 9	F 1	O 3	0	0
2	B	1	Total 13	C 9	F 1	O 3	0	0

*Continued on next page...*

*Continued from previous page...*

Mol	Chain	Residues	Atoms				ZeroOcc	AltConf
			Total	C	F	O		
2	C	1	13	9	1	3	0	0

- Molecule 3 is water.


Mol	Chain	Residues	Atoms		ZeroOcc	AltConf
3	A	41	Total	O	0	0
			41	41		
3	B	35	Total	O	0	0
			35	35		
3	C	17	Total	O	0	0
			17	17		

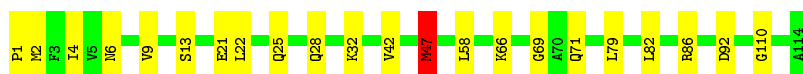
### 3 Residue-property plots [i](#)

These plots are drawn for all protein, RNA and DNA chains in the entry. The first graphic for a chain summarises the proportions of the various outlier classes displayed in the second graphic. The second graphic shows the sequence view annotated by issues in geometry. Residues are color-coded according to the number of geometric quality criteria for which they contain at least one outlier: green = 0, yellow = 1, orange = 2 and red = 3 or more. Stretches of 2 or more consecutive residues without any outlier are shown as a green connector. Residues present in the sample, but not in the model, are shown in grey.


Note EDS was not executed.

- Molecule 1: PROTEIN (MACROPHAGE MIGRATION INHIBITORY FACTOR)

Chain A: 




- Molecule 1: PROTEIN (MACROPHAGE MIGRATION INHIBITORY FACTOR)

Chain B: 



- Molecule 1: PROTEIN (MACROPHAGE MIGRATION INHIBITORY FACTOR)

Chain C: 



## 4 Data and refinement statistics

Xtrriage (Phenix) and EDS were not executed - this section is therefore incomplete.

Property	Value	Source
Space group	H 3	Depositor
Cell constants a, b, c, $\alpha$ , $\beta$ , $\gamma$	99.53Å 99.53Å 105.69Å 90.00° 90.00° 120.00°	Depositor
Resolution (Å)	50.00 – 1.80	Depositor
% Data completeness (in resolution range)	99.1 (50.00-1.80)	Depositor
$R_{merge}$	(Not available)	Depositor
$R_{sym}$	0.08	Depositor
Refinement program	X-PLOR 3.851	Depositor
R, $R_{free}$	0.178 , 0.227	Depositor
Estimated twinning fraction	No twinning to report.	Xtrriage
Total number of atoms	2739	wwPDB-VP
Average B, all atoms (Å <sup>2</sup> )	33.0	wwPDB-VP

## 5 Model quality

### 5.1 Standard geometry

Bond lengths and bond angles in the following residue types are not validated in this section: FHC

The Z score for a bond length (or angle) is the number of standard deviations the observed value is removed from the expected value. A bond length (or angle) with  $|Z| > 5$  is considered an outlier worth inspection. RMSZ is the root-mean-square of all Z scores of the bond lengths (or angles).

Mol	Chain	Bond lengths		Bond angles	
		RMSZ	# Z  >5	RMSZ	# Z  >5
1	A	0.73	0/889	0.90	2/1209 (0.2%)
1	B	0.72	0/889	0.84	3/1209 (0.2%)
1	C	0.78	0/889	0.84	2/1209 (0.2%)
All	All	0.74	0/2667	0.86	7/3627 (0.2%)

There are no bond length outliers.

The worst 5 of 7 bond angle outliers are listed below:

Mol	Chain	Res	Type	Atoms	Z	Observed( $^{\circ}$ )	Ideal( $^{\circ}$ )
1	C	47	MET	CG-SD-CE	6.07	109.91	100.20
1	B	47	MET	CG-SD-CE	5.93	109.68	100.20
1	C	2	MET	CG-SD-CE	5.80	109.47	100.20
1	B	2	MET	CG-SD-CE	5.76	109.42	100.20
1	A	47	MET	CG-SD-CE	5.71	109.33	100.20

There are no chirality outliers.

There are no planarity outliers.

### 5.2 Too-close contacts

In the following table, the Non-H and H(model) columns list the number of non-hydrogen atoms and hydrogen atoms in the chain respectively. The H(added) column lists the number of hydrogen atoms added and optimized by MolProbity. The Clashes column lists the number of clashes within the asymmetric unit, whereas Symm-Clashes lists symmetry related clashes.

Mol	Chain	Non-H	H(model)	H(added)	Clashes	Symm-Clashes
1	A	869	0	853	18	0
1	B	869	0	853	13	0
1	C	869	0	853	17	0

*Continued on next page...*

Continued from previous page...

Mol	Chain	Non-H	H(model)	H(added)	Clashes	Symm-Clashes
2	A	13	0	6	3	0
2	B	13	0	6	4	0
2	C	13	0	6	8	0
3	A	41	0	0	0	0
3	B	35	0	0	0	0
3	C	17	0	0	0	0
All	All	2739	0	2577	54	0

The all-atom clashscore is defined as the number of clashes found per 1000 atoms (including hydrogen atoms). The all-atom clashscore for this structure is 10.

The worst 5 of 54 close contacts within the same asymmetric unit are listed below, sorted by their clash magnitude.

Atom-1	Atom-2	Interatomic distance (Å)	Clash overlap (Å)
1:B:86:ARG:HH11	1:B:86:ARG:HG2	1.47	0.79
2:C:117:FHC:HC6	2:C:117:FHC:O2	1.82	0.79
1:C:33:PRO:HB2	1:C:35:GLN:HG2	1.67	0.76
2:C:117:FHC:HC6	2:C:117:FHC:C9	2.16	0.76
1:C:25:GLN:HG3	1:C:82:LEU:HD21	1.71	0.72

There are no symmetry-related clashes.

## 5.3 Torsion angles [i](#)

### 5.3.1 Protein backbone [i](#)

In the following table, the Percentiles column shows the percent Ramachandran outliers of the chain as a percentile score with respect to all X-ray entries followed by that with respect to entries of similar resolution.

The Analysed column shows the number of residues for which the backbone conformation was analysed, and the total number of residues.

Mol	Chain	Analysed	Favoured	Allowed	Outliers	Percentiles
1	A	112/114 (98%)	109 (97%)	2 (2%)	1 (1%)	17 6
1	B	112/114 (98%)	110 (98%)	2 (2%)	0	100 100
1	C	112/114 (98%)	109 (97%)	3 (3%)	0	100 100
All	All	336/342 (98%)	328 (98%)	7 (2%)	1 (0%)	41 27



All (1) Ramachandran outliers are listed below:

Mol	Chain	Res	Type
1	A	69	GLY

### 5.3.2 Protein sidechains [i](#)

In the following table, the Percentiles column shows the percent sidechain outliers of the chain as a percentile score with respect to all X-ray entries followed by that with respect to entries of similar resolution.

The Analysed column shows the number of residues for which the sidechain conformation was analysed, and the total number of residues.

Mol	Chain	Analysed	Rotameric	Outliers	Percentiles	
1	A	95/95 (100%)	92 (97%)	3 (3%)	39	25
1	B	95/95 (100%)	94 (99%)	1 (1%)	73	68
1	C	95/95 (100%)	90 (95%)	5 (5%)	22	9
All	All	285/285 (100%)	276 (97%)	9 (3%)	39	25

5 of 9 residues with a non-rotameric sidechain are listed below:

Mol	Chain	Res	Type
1	C	20	SER
1	C	109	ASN
1	C	79	LEU
1	A	79	LEU
1	C	35	GLN

Some sidechains can be flipped to improve hydrogen bonding and reduce clashes. 5 of 6 such sidechains are listed below:

Mol	Chain	Res	Type
1	A	109	ASN
1	C	109	ASN
1	B	6	ASN
1	A	45	GLN
1	B	25	GLN

### 5.3.3 RNA [i](#)

There are no RNA molecules in this entry.

## 5.4 Non-standard residues in protein, DNA, RNA chains [i](#)

There are no non-standard protein/DNA/RNA residues in this entry.

## 5.5 Carbohydrates [i](#)

There are no carbohydrates in this entry.

## 5.6 Ligand geometry [i](#)

3 ligands are modelled in this entry.

In the following table, the Counts columns list the number of bonds (or angles) for which Mogul statistics could be retrieved, the number of bonds (or angles) that are observed in the model and the number of bonds (or angles) that are defined in the Chemical Component Dictionary. The Link column lists molecule types, if any, to which the group is linked. The Z score for a bond length (or angle) is the number of standard deviations the observed value is removed from the expected value. A bond length (or angle) with  $|Z| > 2$  is considered an outlier worth inspection. RMSZ is the root-mean-square of all Z scores of the bond lengths (or angles).

Mol	Type	Chain	Res	Link	Bond lengths			Bond angles		
					Counts	RMSZ	# Z  > 2	Counts	RMSZ	# Z  > 2
2	FHC	A	115	-	9,13,13	1.86	2 (22%)	10,17,17	1.02	0
2	FHC	C	117	-	9,13,13	1.27	1 (11%)	10,17,17	0.52	0
2	FHC	B	116	-	9,13,13	1.57	2 (22%)	10,17,17	0.83	0

In the following table, the Chirals column lists the number of chiral outliers, the number of chiral centers analysed, the number of these observed in the model and the number defined in the Chemical Component Dictionary. Similar counts are reported in the Torsion and Rings columns. '-' means no outliers of that kind were identified.

Mol	Type	Chain	Res	Link	Chirals	Torsions	Rings
2	FHC	A	115	-	-	0/4/8/8	0/1/1/1
2	FHC	C	117	-	-	0/4/8/8	0/1/1/1
2	FHC	B	116	-	-	0/4/8/8	0/1/1/1

All (5) bond length outliers are listed below:

Mol	Chain	Res	Type	Atoms	Z	Observed(Å)	Ideal(Å)
2	A	115	FHC	F1-C8	4.11	1.41	1.35
2	B	116	FHC	F1-C8	3.34	1.40	1.35
2	C	117	FHC	F1-C8	3.24	1.40	1.35
2	A	115	FHC	C5-C6	2.73	1.43	1.38

*Continued on next page...*

*Continued from previous page...*

Mol	Chain	Res	Type	Atoms	Z	Observed(Å)	Ideal(Å)
2	B	116	FHC	C5-C4	2.29	1.43	1.38

There are no bond angle outliers.

There are no chirality outliers.

There are no torsion outliers.

There are no ring outliers.

3 monomers are involved in 15 short contacts:

Mol	Chain	Res	Type	Clashes	Symm-Clashes
2	A	115	FHC	3	0
2	C	117	FHC	8	0
2	B	116	FHC	4	0

## 5.7 Other polymers [i](#)

There are no such residues in this entry.

## 5.8 Polymer linkage issues [i](#)

There are no chain breaks in this entry.

## 6 Fit of model and data

### 6.1 Protein, DNA and RNA chains

EDS was not executed - this section is therefore empty.

### 6.2 Non-standard residues in protein, DNA, RNA chains

EDS was not executed - this section is therefore empty.

### 6.3 Carbohydrates

EDS was not executed - this section is therefore empty.

### 6.4 Ligands

EDS was not executed - this section is therefore empty.

### 6.5 Other polymers

EDS was not executed - this section is therefore empty.