



# wwPDB X-ray Structure Validation Summary Report ⓘ

Feb 3, 2024 – 04:58 PM EST

PDB ID : 1MC1  
Title : BETA-LACTAM SYNTHETASE WITH PRODUCT (DGPC), AMP AND PPI  
Authors : Miller, M.T.; Bachmann, B.O.; Townsend, C.A.; Rosenzweig, A.C.  
Deposited on : 2002-08-04  
Resolution : 2.16 Å(reported)

This is a wwPDB X-ray Structure Validation Summary Report for a publicly released PDB entry.

We welcome your comments at [validation@mail.wwpdb.org](mailto:validation@mail.wwpdb.org)

A user guide is available at

<https://www.wwpdb.org/validation/2017/XrayValidationReportHelp>

with specific help available everywhere you see the ⓘ symbol.

The types of validation reports are described at

<http://www.wwpdb.org/validation/2017/FAQs#types>.

---

The following versions of software and data (see [references ⓘ](#)) were used in the production of this report:

MolProbity : 4.02b-467  
Mogul : 1.8.5 (274361), CSD as541be (2020)  
Xtriage (Phenix) : 1.13  
EDS : 2.36  
buster-report : 1.1.7 (2018)  
Percentile statistics : 20191225.v01 (using entries in the PDB archive December 25th 2019)  
Refmac : 5.8.0158  
CCP4 : 7.0.044 (Gargrove)  
Ideal geometry (proteins) : Engh & Huber (2001)  
Ideal geometry (DNA, RNA) : Parkinson et al. (1996)  
Validation Pipeline (wwPDB-VP) : 2.36

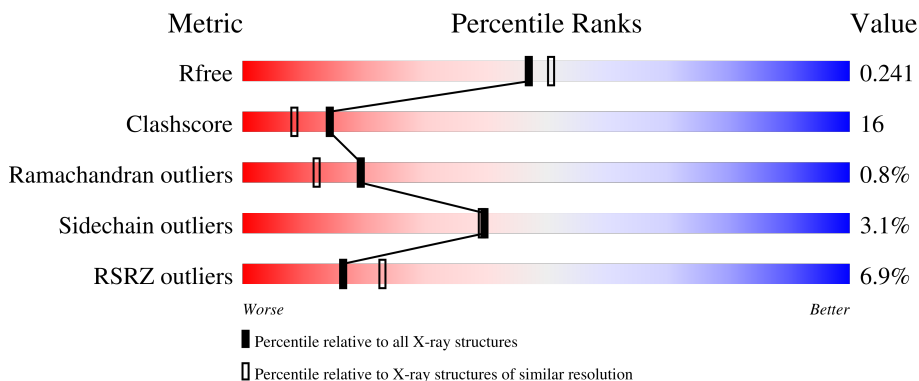
# 1 Overall quality at a glance

The following experimental techniques were used to determine the structure:

*X-RAY DIFFRACTION*

The reported resolution of this entry is 2.16 Å.

Percentile scores (ranging between 0-100) for global validation metrics of the entry are shown in the following graphic. The table shows the number of entries on which the scores are based.



Metric	Whole archive (#Entries)	Similar resolution (#Entries, resolution range(Å))
$R_{free}$	130704	1479 (2.16-2.16)
Clashscore	141614	1585 (2.16-2.16)
Ramachandran outliers	138981	1560 (2.16-2.16)
Sidechain outliers	138945	1559 (2.16-2.16)
RSRZ outliers	127900	1456 (2.16-2.16)

The table below summarises the geometric issues observed across the polymeric chains and their fit to the electron density. The red, orange, yellow and green segments of the lower bar indicate the fraction of residues that contain outliers for  $\geq 3$ , 2, 1 and 0 types of geometric quality criteria respectively. A grey segment represents the fraction of residues that are not modelled. The numeric value for each fraction is indicated below the corresponding segment, with a dot representing fractions  $\leq 5\%$ . The upper red bar (where present) indicates the fraction of residues that have poor fit to the electron density. The numeric value is given above the bar.

Mol	Chain	Length	Quality of chain
1	A	513	 8% 68% 24% . . .
1	B	513	 6% 72% 23% . .

The following table lists non-polymeric compounds, carbohydrate monomers and non-standard residues in protein, DNA, RNA chains that are outliers for geometric or electron-density-fit criteria:

Mol	Type	Chain	Res	Chirality	Geometry	Clashes	Electron density
4	AMP	A	702	-	-	X	-
5	PCX	B	706	-	-	X	-

## 2 Entry composition [i](#)

There are 6 unique types of molecules in this entry. The entry contains 7946 atoms, of which 0 are hydrogens and 0 are deuteriums.

In the tables below, the ZeroOcc column contains the number of atoms modelled with zero occupancy, the AltConf column contains the number of residues with at least one atom in alternate conformation and the Trace column contains the number of residues modelled with at most 2 atoms.

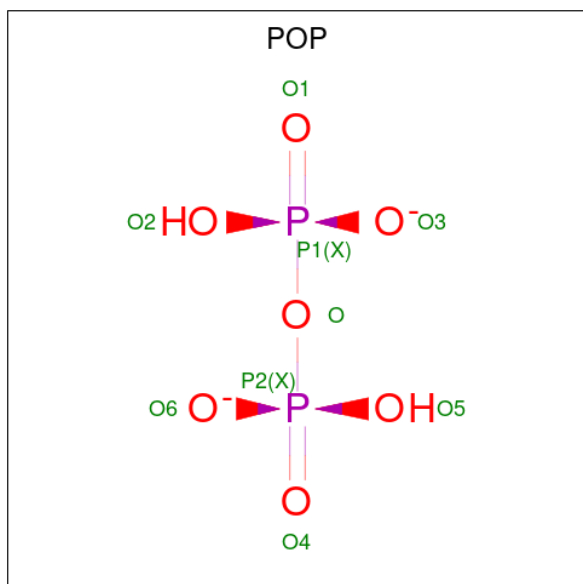
- Molecule 1 is a protein called BETA-LACTAM SYNTHETASE.

Mol	Chain	Residues	Atoms					ZeroOcc	AltConf	Trace
			Total	C	N	O	S			
1	A	491	Total 3693	C 2305	N 678	O 702	S 8	0	0	0
1	B	498	Total 3748	C 2339	N 692	O 709	S 8	0	0	0

- Molecule 2 is MAGNESIUM ION (three-letter code: MG) (formula: Mg).

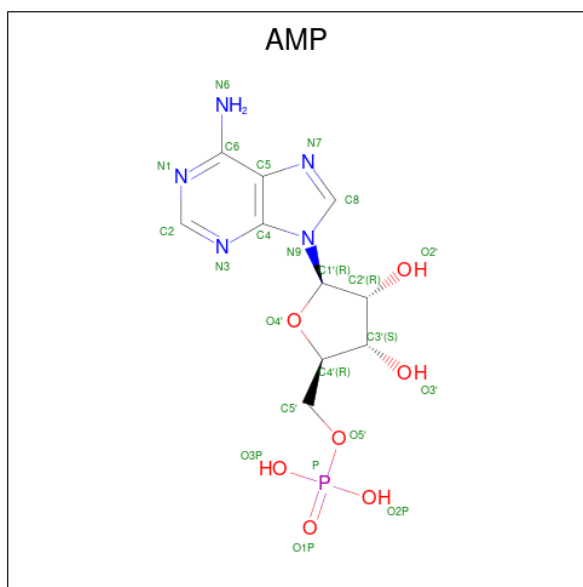
Mol	Chain	Residues	Atoms		ZeroOcc	AltConf
2	A	2	Total 2	Mg 2	0	0
2	B	2	Total 2	Mg 2	0	0

- Molecule 3 is PYROPHOSPHATE 2- (three-letter code: POP) (formula: H<sub>2</sub>O<sub>7</sub>P<sub>2</sub>).



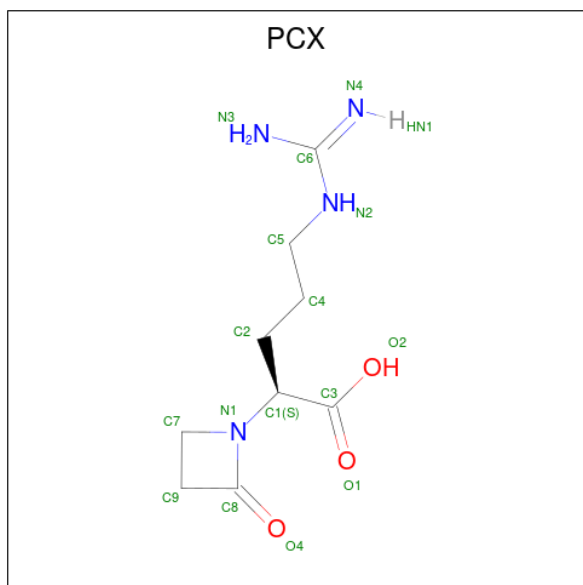
Mol	Chain	Residues	Atoms	ZeroOcc	AltConf
3	A	1	Total O P 9 7 2	0	0
3	B	1	Total O P 9 7 2	0	0

- Molecule 4 is ADENOSINE MONOPHOSPHATE (three-letter code: AMP) (formula: C<sub>10</sub>H<sub>14</sub>N<sub>5</sub>O<sub>7</sub>P).



Mol	Chain	Residues	Atoms	ZeroOcc	AltConf
4	A	1	Total C N O P 23 10 5 7 1	0	0
4	B	1	Total C N O P 23 10 5 7 1	0	0

- Molecule 5 is DEOXYGUANIDINOPROCLAVAMINIC ACID (three-letter code: PCX) (formula: C<sub>9</sub>H<sub>16</sub>N<sub>4</sub>O<sub>3</sub>).



Mol	Chain	Residues	Atoms			ZeroOcc	AltConf	
5	A	1	Total	C	N	O	0	0
			16	9	4	3		
5	B	1	Total	C	N	O	0	0
			16	9	4	3		

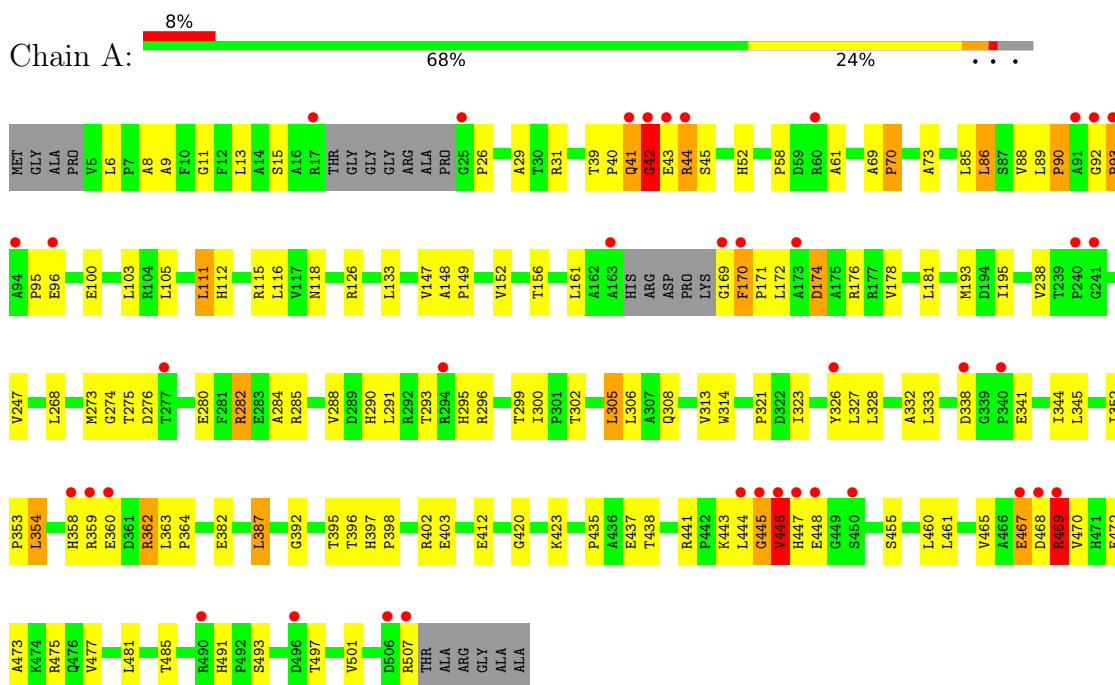
- Molecule 6 is water.

Mol	Chain	Residues	Atoms		ZeroOcc	AltConf
6	A	175	Total	O	0	0
			175	175		
6	B	230	Total	O	0	0
			230	230		

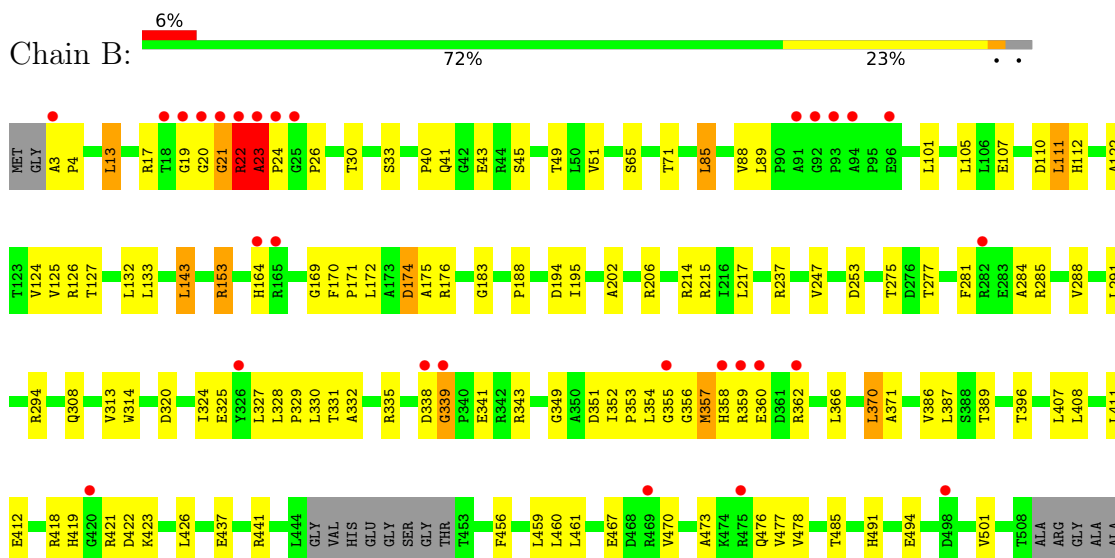
### 3 Residue-property plots

These plots are drawn for all protein, RNA, DNA and oligosaccharide chains in the entry. The first graphic for a chain summarises the proportions of the various outlier classes displayed in the second graphic. The second graphic shows the sequence view annotated by issues in geometry and electron density. Residues are color-coded according to the number of geometric quality criteria for which they contain at least one outlier: green = 0, yellow = 1, orange = 2 and red = 3 or more. A red dot above a residue indicates a poor fit to the electron density ( $RSRZ > 2$ ). Stretches of 2 or more consecutive residues without any outlier are shown as a green connector. Residues present in the sample, but not in the model, are shown in grey.

#### • Molecule 1: BETA-LACTAM SYNTHETASE



#### • Molecule 1: BETA-LACTAM SYNTHETASE



## 4 Data and refinement statistics

Property	Value	Source
Space group	P 1 21 1	Depositor
Cell constants a, b, c, $\alpha$ , $\beta$ , $\gamma$	61.04Å 96.57Å 80.91Å 90.00° 90.54° 90.00°	Depositor
Resolution (Å)	29.10 – 2.16 29.10 – 2.00	Depositor EDS
% Data completeness (in resolution range)	94.7 (29.10-2.16) 94.6 (29.10-2.00)	Depositor EDS
$R_{merge}$	(Not available)	Depositor
$R_{sym}$	0.07	Depositor
$\langle I/\sigma(I) \rangle$ <sup>1</sup>	0.00 (at 2.00Å)	Xtrriage
Refinement program	CNS	Depositor
R, $R_{free}$	0.208 , 0.247 0.202 , 0.241	Depositor DCC
$R_{free}$ test set	4350 reflections (6.86%)	wwPDB-VP
Wilson B-factor (Å <sup>2</sup> )	21.6	Xtrriage
Anisotropy	0.549	Xtrriage
Bulk solvent $k_{sol}$ (e/Å <sup>3</sup> ), $B_{sol}$ (Å <sup>2</sup> )	0.39 , 54.5	EDS
L-test for twinning <sup>2</sup>	$\langle  L  \rangle = 0.46$ , $\langle L^2 \rangle = 0.29$	Xtrriage
Estimated twinning fraction	0.053 for h,-k,-l	Xtrriage
$F_o, F_c$ correlation	0.93	EDS
Total number of atoms	7946	wwPDB-VP
Average B, all atoms (Å <sup>2</sup> )	26.0	wwPDB-VP

Xtrriage's analysis on translational NCS is as follows: *The largest off-origin peak in the Patterson function is 5.04% of the height of the origin peak. No significant pseudotranslation is detected.*

<sup>1</sup>Intensities estimated from amplitudes.

<sup>2</sup>Theoretical values of  $\langle |L| \rangle$ ,  $\langle L^2 \rangle$  for acentric reflections are 0.5, 0.333 respectively for untwinned datasets, and 0.375, 0.2 for perfectly twinned datasets.



## 5 Model quality [i](#)

### 5.1 Standard geometry [i](#)

Bond lengths and bond angles in the following residue types are not validated in this section: POP, MG, AMP, PCX

The Z score for a bond length (or angle) is the number of standard deviations the observed value is removed from the expected value. A bond length (or angle) with  $|Z| > 5$  is considered an outlier worth inspection. RMSZ is the root-mean-square of all Z scores of the bond lengths (or angles).

Mol	Chain	Bond lengths		Bond angles	
		RMSZ	# $ Z  > 5$	RMSZ	# $ Z  > 5$
1	A	0.51	4/3765 (0.1%)	0.87	19/5136 (0.4%)
1	B	0.41	1/3824 (0.0%)	0.74	8/5219 (0.2%)
All	All	0.46	5/7589 (0.1%)	0.81	27/10355 (0.3%)

Chiral center outliers are detected by calculating the chiral volume of a chiral center and verifying if the center is modelled as a planar moiety or with the opposite hand. A planarity outlier is detected by checking planarity of atoms in a peptide group, atoms in a mainchain group or atoms of a sidechain that are expected to be planar.

Mol	Chain	#Chirality outliers	#Planarity outliers
1	A	0	9
1	B	1	5
All	All	1	14

All (5) bond length outliers are listed below:

Mol	Chain	Res	Type	Atoms	Z	Observed(Å)	Ideal(Å)
1	A	169	GLY	CA-C	-6.76	1.41	1.51
1	A	169	GLY	N-CA	-6.73	1.35	1.46
1	A	468	ASP	N-CA	6.52	1.59	1.46
1	A	445	GLY	C-O	6.07	1.33	1.23
1	B	23	ALA	N-CA	5.26	1.56	1.46

The worst 5 of 27 bond angle outliers are listed below:

Mol	Chain	Res	Type	Atoms	Z	Observed(°)	Ideal(°)
1	A	170	PHE	C-N-CD	12.67	155.00	128.40
1	A	169	GLY	N-CA-C	11.90	142.85	113.10
1	A	69	ALA	C-N-CD	11.84	153.26	128.40
1	B	23	ALA	O-C-N	-11.46	99.32	121.10

*Continued on next page...*

*Continued from previous page...*

Mol	Chain	Res	Type	Atoms	Z	Observed(°)	Ideal(°)
1	A	469	ARG	O-C-N	-10.71	105.57	122.70

All (1) chirality outliers are listed below:

Mol	Chain	Res	Type	Atom
1	B	22	ARG	CA

5 of 14 planarity outliers are listed below:

Mol	Chain	Res	Type	Group
1	A	174	ASP	Sidechain
1	A	42	GLY	Peptide,Mainchain
1	A	44	ARG	Mainchain
1	A	445	GLY	Mainchain
1	A	70	PRO	Mainchain

## 5.2 Too-close contacts [i](#)

In the following table, the Non-H and H(model) columns list the number of non-hydrogen atoms and hydrogen atoms in the chain respectively. The H(added) column lists the number of hydrogen atoms added and optimized by MolProbity. The Clashes column lists the number of clashes within the asymmetric unit, whereas Symm-Clashes lists symmetry-related clashes.

Mol	Chain	Non-H	H(model)	H(added)	Clashes	Symm-Clashes
1	A	3693	0	3680	128	2
1	B	3748	0	3742	102	1
2	A	2	0	0	0	0
2	B	2	0	0	0	0
3	A	9	0	0	0	0
3	B	9	0	0	1	0
4	A	23	0	12	13	0
4	B	23	0	12	3	0
5	A	16	0	14	5	0
5	B	16	0	14	8	0
6	A	175	0	0	3	0
6	B	230	0	0	7	0
All	All	7946	0	7474	233	2

The all-atom clashscore is defined as the number of clashes found per 1000 atoms (including hydrogen atoms). The all-atom clashscore for this structure is 16.

The worst 5 of 233 close contacts within the same asymmetric unit are listed below, sorted by

their clash magnitude.

Atom-1	Atom-2	Interatomic distance (Å)	Clash overlap (Å)
4:A:702:AMP:O3P	5:A:703:PCX:H9C1	1.14	1.32
1:A:149:PRO:CD	1:A:170:PHE:CZ	2.20	1.23
1:A:149:PRO:CD	1:A:170:PHE:CE1	2.30	1.15
1:A:149:PRO:HD3	1:A:170:PHE:CE1	1.80	1.15
1:A:326:TYR:CE2	1:A:447:HIS:CE1	2.44	1.05

All (2) symmetry-related close contacts are listed below. The label for Atom-2 includes the symmetry operator and encoded unit-cell translations to be applied.

Atom-1	Atom-2	Interatomic distance (Å)	Clash overlap (Å)
1:A:44:ARG:NE	1:A:276:ASP:OD1[1_455]	2.10	0.10
1:A:420:GLY:O	1:B:359:ARG:NE[1_655]	2.10	0.10

## 5.3 Torsion angles [i](#)

### 5.3.1 Protein backbone [i](#)

In the following table, the Percentiles column shows the percent Ramachandran outliers of the chain as a percentile score with respect to all X-ray entries followed by that with respect to entries of similar resolution.

The Analysed column shows the number of residues for which the backbone conformation was analysed, and the total number of residues.

Mol	Chain	Analysed	Favoured	Allowed	Outliers	Percentiles
1	A	485/513 (94%)	461 (95%)	18 (4%)	6 (1%)	13 7
1	B	494/513 (96%)	474 (96%)	18 (4%)	2 (0%)	34 29
All	All	979/1026 (95%)	935 (96%)	36 (4%)	8 (1%)	19 12

5 of 8 Ramachandran outliers are listed below:

Mol	Chain	Res	Type
1	A	42	GLY
1	A	90	PRO
1	A	111	LEU
1	B	111	LEU
1	B	339	GLY

### 5.3.2 Protein sidechains [i](#)

In the following table, the Percentiles column shows the percent sidechain outliers of the chain as a percentile score with respect to all X-ray entries followed by that with respect to entries of similar resolution.

The Analysed column shows the number of residues for which the sidechain conformation was analysed, and the total number of residues.

Mol	Chain	Analysed	Rotameric	Outliers	Percentiles	
1	A	383/395 (97%)	373 (97%)	10 (3%)	46	47
1	B	388/395 (98%)	374 (96%)	14 (4%)	35	33
All	All	771/790 (98%)	747 (97%)	24 (3%)	40	39

5 of 24 residues with a non-rotameric sidechain are listed below:

Mol	Chain	Res	Type
1	B	153	ARG
1	B	330	LEU
1	B	294	ARG
1	B	341	GLU
1	A	362	ARG

Sometimes sidechains can be flipped to improve hydrogen bonding and reduce clashes. 5 of 13 such sidechains are listed below:

Mol	Chain	Res	Type
1	B	236	GLN
1	B	308	GLN
1	B	471	HIS
1	B	381	ASN
1	B	440	ASN

### 5.3.3 RNA [i](#)

There are no RNA molecules in this entry.

## 5.4 Non-standard residues in protein, DNA, RNA chains [i](#)

There are no non-standard protein/DNA/RNA residues in this entry.

## 5.5 Carbohydrates [i](#)

There are no monosaccharides in this entry.

## 5.6 Ligand geometry [i](#)

Of 10 ligands modelled in this entry, 4 are monoatomic - leaving 6 for Mogul analysis.

In the following table, the Counts columns list the number of bonds (or angles) for which Mogul statistics could be retrieved, the number of bonds (or angles) that are observed in the model and the number of bonds (or angles) that are defined in the Chemical Component Dictionary. The Link column lists molecule types, if any, to which the group is linked. The Z score for a bond length (or angle) is the number of standard deviations the observed value is removed from the expected value. A bond length (or angle) with  $|Z| > 2$  is considered an outlier worth inspection. RMSZ is the root-mean-square of all Z scores of the bond lengths (or angles).

Mol	Type	Chain	Res	Link	Bond lengths			Bond angles		
					Counts	RMSZ	# Z  > 2	Counts	RMSZ	# Z  > 2
5	PCX	B	706	-	15,16,16	6.49	5 (33%)	13,21,21	7.35	4 (30%)
3	POP	B	704	2	6,8,8	0.99	0	13,13,13	0.81	0
5	PCX	A	703	-	15,16,16	9.76	6 (40%)	13,21,21	5.84	4 (30%)
3	POP	A	701	2	6,8,8	1.12	0	13,13,13	1.06	0
4	AMP	B	705	2	22,25,25	2.29	6 (27%)	25,38,38	1.62	5 (20%)
4	AMP	A	702	2	22,25,25	2.27	6 (27%)	25,38,38	1.64	5 (20%)

In the following table, the Chirals column lists the number of chiral outliers, the number of chiral centers analysed, the number of these observed in the model and the number defined in the Chemical Component Dictionary. Similar counts are reported in the Torsion and Rings columns. '-' means no outliers of that kind were identified.

Mol	Type	Chain	Res	Link	Chirals	Torsions	Rings
5	PCX	B	706	-	-	7/14/24/24	0/1/1/1
3	POP	B	704	2	-	0/6/6/6	-
5	PCX	A	703	-	-	9/14/24/24	0/1/1/1
3	POP	A	701	2	-	0/6/6/6	-
4	AMP	B	705	2	-	1/6/26/26	0/3/3/3
4	AMP	A	702	2	-	1/6/26/26	0/3/3/3

The worst 5 of 23 bond length outliers are listed below:

Mol	Chain	Res	Type	Atoms	Z	Observed(Å)	Ideal(Å)
5	A	703	PCX	C1-N1	-36.03	1.02	1.46
5	B	706	PCX	C1-N1	-22.67	1.18	1.46

*Continued on next page...*

*Continued from previous page...*

Mol	Chain	Res	Type	Atoms	Z	Observed(Å)	Ideal(Å)
5	A	703	PCX	C7-C9	-7.95	1.42	1.54
5	B	706	PCX	C7-C9	-7.55	1.42	1.54
4	B	705	AMP	C3'-C4'	6.03	1.68	1.53

The worst 5 of 18 bond angle outliers are listed below:

Mol	Chain	Res	Type	Atoms	Z	Observed(°)	Ideal(°)
5	B	706	PCX	O4-C8-N1	24.99	145.44	131.14
5	A	703	PCX	C2-C1-N1	-15.17	95.32	112.65
5	A	703	PCX	O4-C8-N1	13.49	138.86	131.14
5	B	706	PCX	C2-C1-N1	-6.91	104.76	112.65
4	A	702	AMP	C4-C5-N7	4.45	114.04	109.40

There are no chirality outliers.

5 of 18 torsion outliers are listed below:

Mol	Chain	Res	Type	Atoms
5	A	703	PCX	C2-C1-N1-C7
5	A	703	PCX	N1-C1-C2-C4
5	A	703	PCX	C3-C1-C2-C4
5	A	703	PCX	C2-C1-C3-O1
5	B	706	PCX	C2-C1-N1-C7

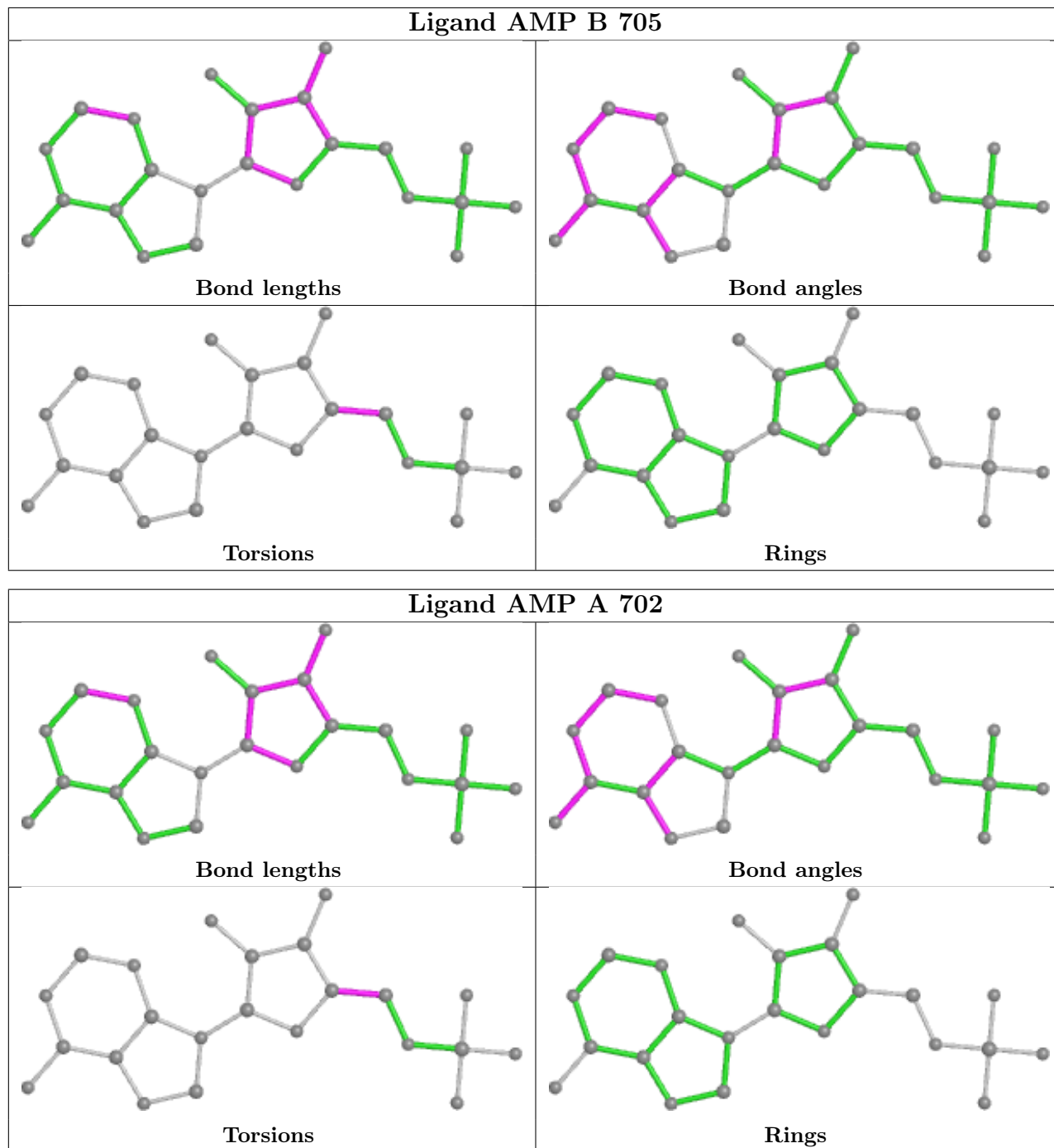
There are no ring outliers.

5 monomers are involved in 26 short contacts:

Mol	Chain	Res	Type	Clashes	Symm-Clashes
5	B	706	PCX	8	0
3	B	704	POP	1	0
5	A	703	PCX	5	0
4	B	705	AMP	3	0
4	A	702	AMP	13	0

The following is a two-dimensional graphical depiction of Mogul quality analysis of bond lengths, bond angles, torsion angles, and ring geometry for all instances of the Ligand of Interest. In addition, ligands with molecular weight > 250 and outliers as shown on the validation Tables will also be included. For torsion angles, if less than 5% of the Mogul distribution of torsion angles is within 10 degrees of the torsion angle in question, then that torsion angle is considered an outlier. Any bond that is central to one or more torsion angles identified as an outlier by Mogul will be highlighted in the graph. For rings, the root-mean-square deviation (RMSD) between the ring in question and similar rings identified by Mogul is calculated over all ring torsion angles. If the average RMSD is greater than 60 degrees and the minimal RMSD between the ring in question and

any Mogul-identified rings is also greater than 60 degrees, then that ring is considered an outlier. The outliers are highlighted in purple. The color gray indicates Mogul did not find sufficient equivalents in the CSD to analyse the geometry.



## 5.7 Other polymers [\(i\)](#)

There are no such residues in this entry.

## 5.8 Polymer linkage issues

There are no chain breaks in this entry.



## 6 Fit of model and data [i](#)

### 6.1 Protein, DNA and RNA chains [i](#)

In the following table, the column labelled ‘#RSRZ > 2’ contains the number (and percentage) of RSRZ outliers, followed by percent RSRZ outliers for the chain as percentile scores relative to all X-ray entries and entries of similar resolution. The OWAB column contains the minimum, median, 95<sup>th</sup> percentile and maximum values of the occupancy-weighted average B-factor per residue. The column labelled ‘Q < 0.9’ lists the number of (and percentage) of residues with an average occupancy less than 0.9.

Mol	Chain	Analysed	<RSRZ>	#RSRZ>2	OWAB(Å <sup>2</sup> )	Q<0.9
1	A	491/513 (95%)	0.35	39 (7%) 12 17	10, 25, 46, 59	0
1	B	498/513 (97%)	0.24	29 (5%) 23 31	13, 23, 42, 60	0
All	All	989/1026 (96%)	0.30	68 (6%) 16 23	10, 24, 45, 60	0

The worst 5 of 68 RSRZ outliers are listed below:

Mol	Chain	Res	Type	RSRZ
1	B	22	ARG	9.4
1	B	93	PRO	7.0
1	A	91	ALA	6.7
1	A	170	PHE	6.7
1	B	23	ALA	6.3

### 6.2 Non-standard residues in protein, DNA, RNA chains [i](#)

There are no non-standard protein/DNA/RNA residues in this entry.

### 6.3 Carbohydrates [i](#)

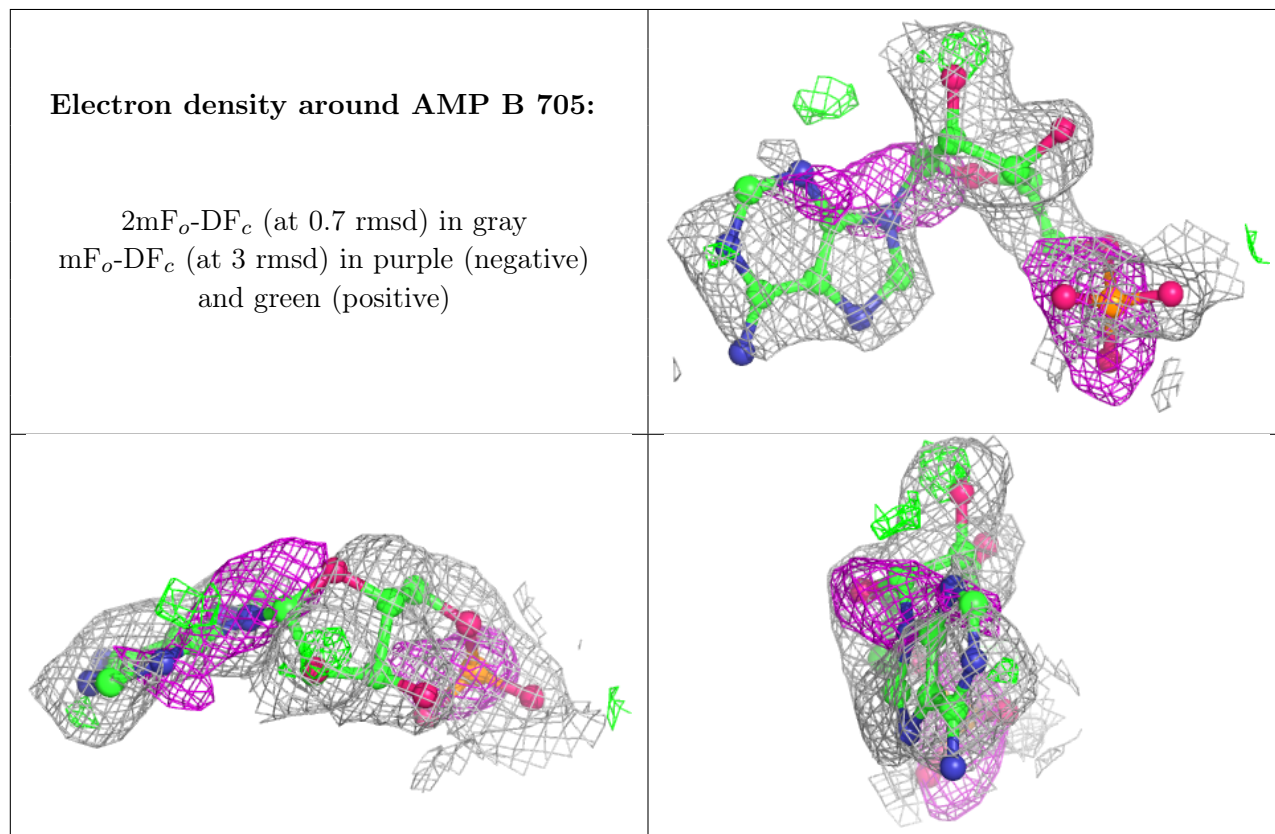
There are no monosaccharides in this entry.

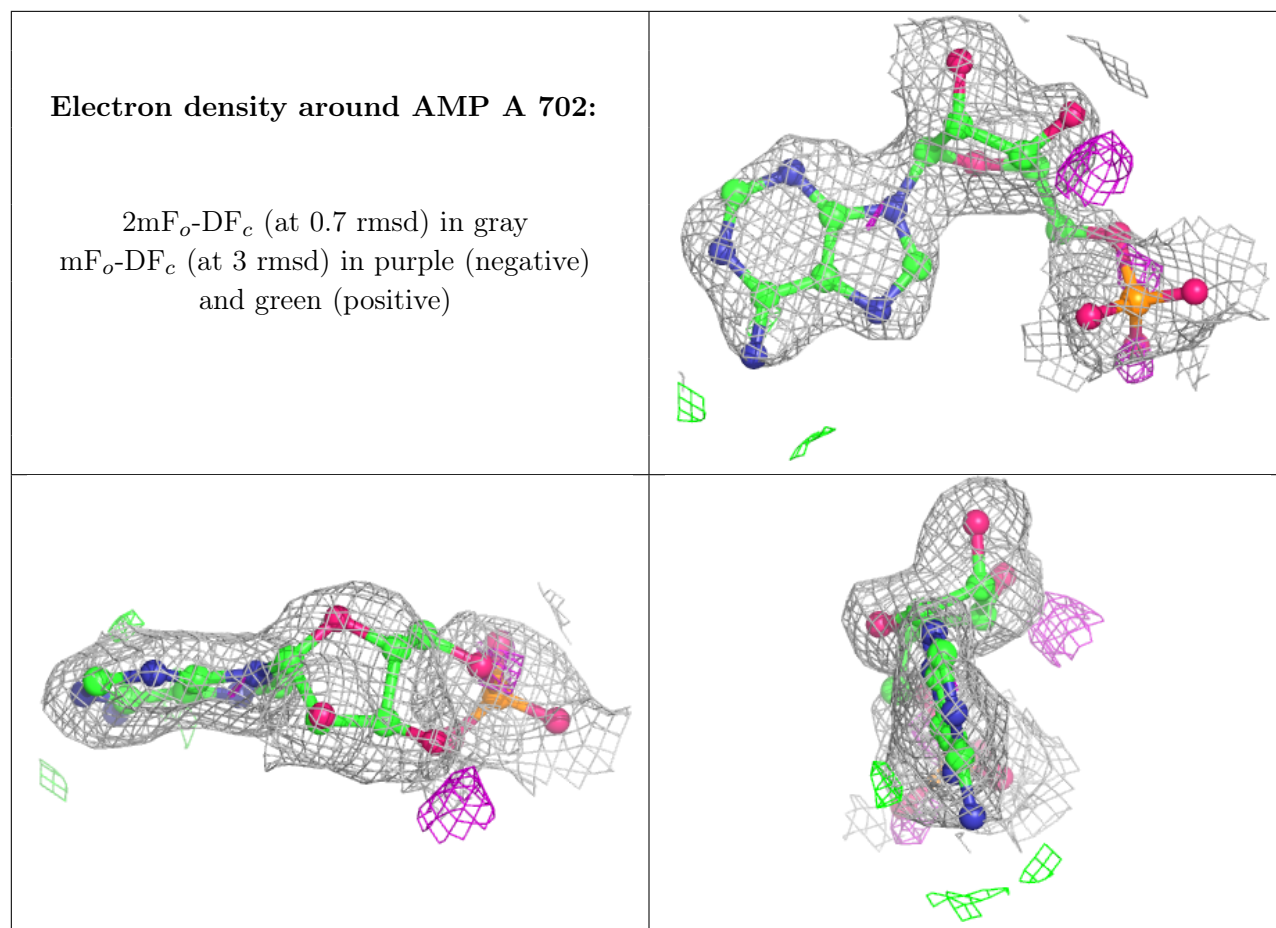
### 6.4 Ligands [i](#)

In the following table, the Atoms column lists the number of modelled atoms in the group and the number defined in the chemical component dictionary. The B-factors column lists the minimum, median, 95<sup>th</sup> percentile and maximum values of B factors of atoms in the group. The column labelled ‘Q < 0.9’ lists the number of atoms with occupancy less than 0.9.

Mol	Type	Chain	Res	Atoms	RSCC	RSR	B-factors( $\text{\AA}^2$ )	Q<0.9
4	AMP	B	705	23/23	0.59	0.32	41,46,60,61	0
5	PCX	A	703	16/16	0.80	0.20	39,46,49,51	0
5	PCX	B	706	16/16	0.81	0.19	23,31,37,39	0
4	AMP	A	702	23/23	0.84	0.19	26,39,49,50	0
2	MG	A	603	1/1	0.89	0.13	35,35,35,35	0
2	MG	B	605	1/1	0.89	0.07	29,29,29,29	0
2	MG	B	602	1/1	0.92	0.06	38,38,38,38	0
2	MG	A	601	1/1	0.93	0.14	32,32,32,32	0
3	POP	A	701	9/9	0.95	0.10	23,27,30,31	0
3	POP	B	704	9/9	0.97	0.08	19,20,22,23	0

The following is a graphical depiction of the model fit to experimental electron density of all instances of the Ligand of Interest. In addition, ligands with molecular weight > 250 and outliers as shown on the geometry validation Tables will also be included. Each fit is shown from different orientation to approximate a three-dimensional view.





## 6.5 Other polymers [i](#)

There are no such residues in this entry.