



# Full wwPDB X-ray Structure Validation Report ⓘ

Oct 17, 2021 – 04:12 AM EDT

PDB ID : 1I12  
Title : CRYSTAL STRUCTURE OF SACCHAROMYCES CEREVISIAE GNA1  
COMPLEXED WITH ACCOA  
Authors : Peneff, C.; Mengin-Lecreulx, D.; Bourne, Y.  
Deposited on : 2001-01-30  
Resolution : 1.30 Å(reported)

This is a Full wwPDB X-ray Structure Validation Report for a publicly released PDB entry.

We welcome your comments at [validation@mail.wwpdb.org](mailto:validation@mail.wwpdb.org)

A user guide is available at

<https://www.wwpdb.org/validation/2017/XrayValidationReportHelp>

with specific help available everywhere you see the ⓘ symbol.

---

The following versions of software and data (see [references ⓘ](#)) were used in the production of this report:

MolProbity : 4.02b-467  
Mogul : 1.8.5 (274361), CSD as541be (2020)  
Xtrriage (Phenix) : 1.13  
EDS : 2.23.2  
buster-report : 1.1.7 (2018)  
Percentile statistics : 20191225.v01 (using entries in the PDB archive December 25th 2019)  
Refmac : 5.8.0158  
CCP4 : 7.0.044 (Gargrove)  
Ideal geometry (proteins) : Engh & Huber (2001)  
Ideal geometry (DNA, RNA) : Parkinson et al. (1996)  
Validation Pipeline (wwPDB-VP) : 2.23.2

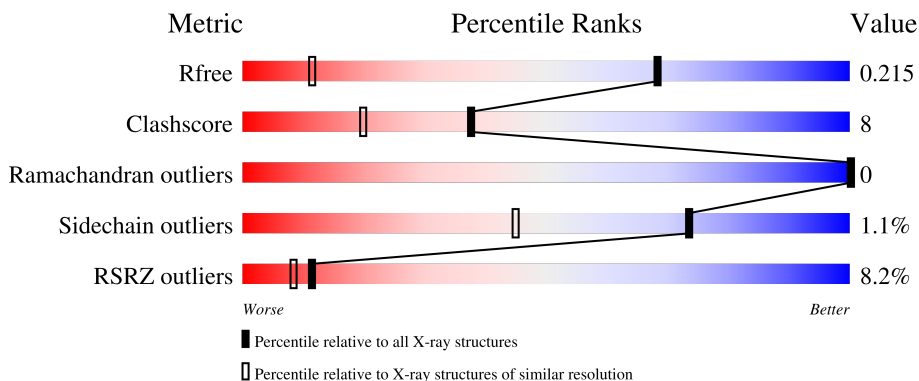
# 1 Overall quality at a glance

The following experimental techniques were used to determine the structure:

*X-RAY DIFFRACTION*

The reported resolution of this entry is 1.30 Å.

Percentile scores (ranging between 0-100) for global validation metrics of the entry are shown in the following graphic. The table shows the number of entries on which the scores are based.



Metric	Whole archive (#Entries)	Similar resolution (#Entries, resolution range(Å))
$R_{free}$	130704	1058 (1.30-1.30)
Clashscore	141614	1101 (1.30-1.30)
Ramachandran outliers	138981	1058 (1.30-1.30)
Sidechain outliers	138945	1058 (1.30-1.30)
RSRZ outliers	127900	1029 (1.30-1.30)

The table below summarises the geometric issues observed across the polymeric chains and their fit to the electron density. The red, orange, yellow and green segments of the lower bar indicate the fraction of residues that contain outliers for  $\geq 3$ , 2, 1 and 0 types of geometric quality criteria respectively. A grey segment represents the fraction of residues that are not modelled. The numeric value for each fraction is indicated below the corresponding segment, with a dot representing fractions  $\leq 5\%$ . The upper red bar (where present) indicates the fraction of residues that have poor fit to the electron density. The numeric value is given above the bar.

Mol	Chain	Length	Quality of chain
1	A	160	
1	B	160	
1	C	160	
1	D	160	

## 2 Entry composition

There are 4 unique types of molecules in this entry. The entry contains 5842 atoms, of which 0 are hydrogens and 0 are deuteriums.

In the tables below, the ZeroOcc column contains the number of atoms modelled with zero occupancy, the AltConf column contains the number of residues with at least one atom in alternate conformation and the Trace column contains the number of residues modelled with at most 2 atoms.

- Molecule 1 is a protein called GLUCOSAMINE-PHOSPHATE N-ACETYLTRANSFERASE.

Mol	Chain	Residues	Atoms					ZeroOcc	AltConf	Trace
			Total	C	N	O	S			
1	A	154	1256	803	207	236	10	0	7	0
1	B	154	1243	792	203	238	10	0	6	0
1	C	154	1236	790	201	234	11	0	5	0
1	D	157	1264	805	206	242	11	0	6	0

There are 8 discrepancies between the modelled and reference sequences:

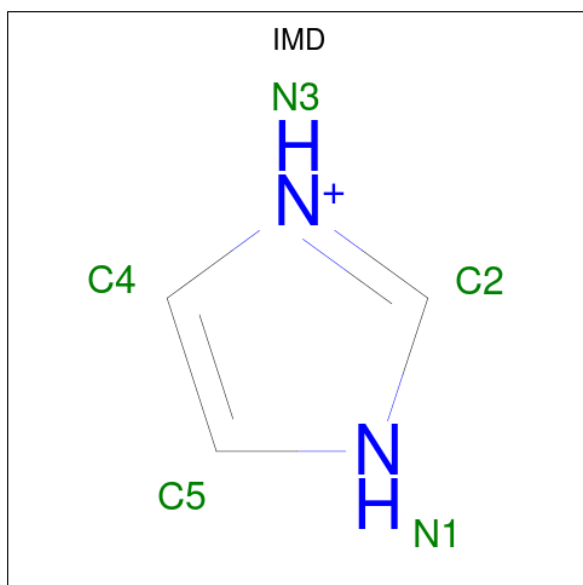
Chain	Residue	Modelled	Actual	Comment	Reference
A	0	SER	-	cloning artifact	UNP P43577
A	39	CYS	SER	engineered mutation	UNP P43577
B	0	SER	-	cloning artifact	UNP P43577
B	39	CYS	SER	engineered mutation	UNP P43577
C	0	SER	-	cloning artifact	UNP P43577
C	39	CYS	SER	engineered mutation	UNP P43577
D	0	SER	-	cloning artifact	UNP P43577
D	39	CYS	SER	engineered mutation	UNP P43577

- Molecule 2 is ACETYL COENZYME \*A (three-letter code: ACO) (formula: C<sub>23</sub>H<sub>38</sub>N<sub>7</sub>O<sub>17</sub>P<sub>3</sub>S).



Mol	Chain	Residues	Atoms					ZeroOcc	AltConf	
			Total	C	N	O	P			S
2	A	1	51	23	7	17	3	1	0	0
2	B	1	51	23	7	17	3	1	0	0
2	C	1	51	23	7	17	3	1	0	0
2	D	1	51	23	7	17	3	1	0	0

- Molecule 3 is IMIDAZOLE (three-letter code: IMD) (formula: C<sub>3</sub>H<sub>5</sub>N<sub>2</sub>).



Mol	Chain	Residues	Atoms			ZeroOcc	AltConf
3	A	1	Total	C	N	0	0
			5	3	2		
3	B	1	Total	C	N	0	0
			5	3	2		

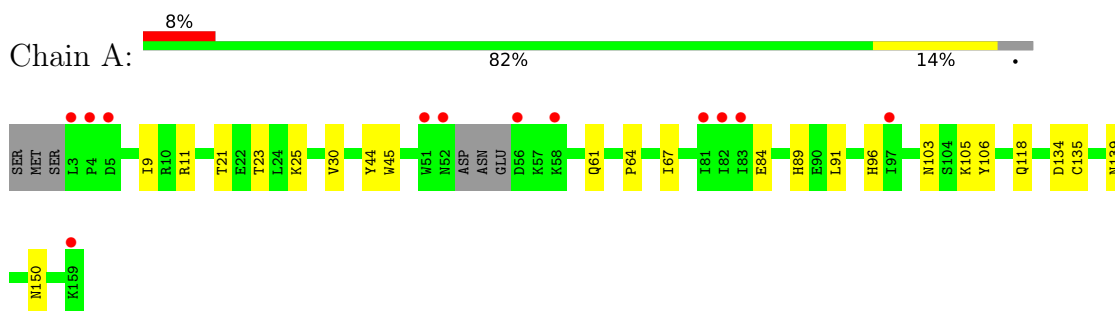
- Molecule 4 is water.

Mol	Chain	Residues	Atoms		ZeroOcc	AltConf
4	A	218	Total	O	0	0
			218	218		
4	B	164	Total	O	0	0
			164	164		
4	C	140	Total	O	0	0
			140	140		
4	D	107	Total	O	0	0
			107	107		

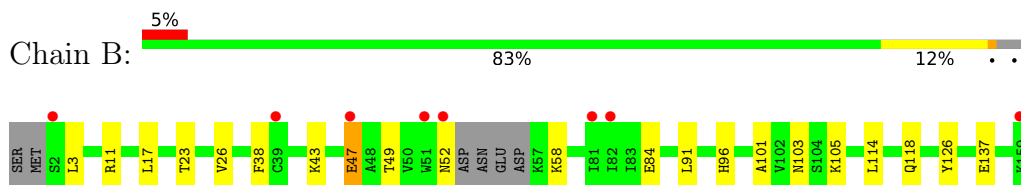
### 3 Residue-property plots [i](#)

These plots are drawn for all protein, RNA, DNA and oligosaccharide chains in the entry. The first graphic for a chain summarises the proportions of the various outlier classes displayed in the second graphic. The second graphic shows the sequence view annotated by issues in geometry and electron density. Residues are color-coded according to the number of geometric quality criteria for which they contain at least one outlier: green = 0, yellow = 1, orange = 2 and red = 3 or more. A red dot above a residue indicates a poor fit to the electron density ( $RSRZ > 2$ ). Stretches of 2 or more consecutive residues without any outlier are shown as a green connector. Residues present in the sample, but not in the model, are shown in grey.

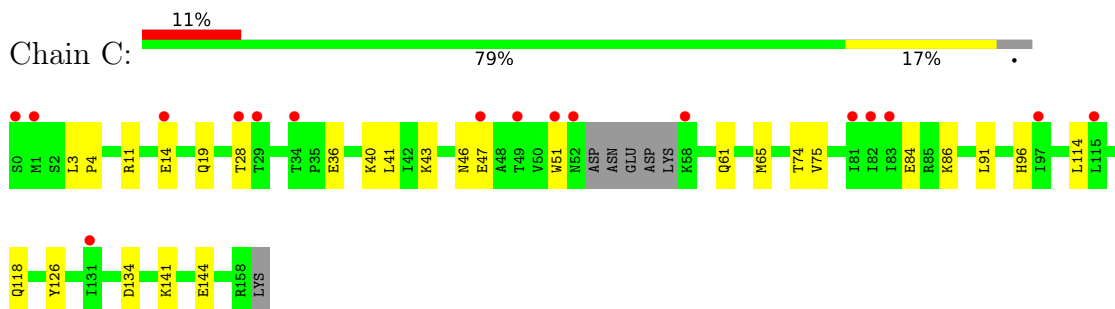
- Molecule 1: GLUCOSAMINE-PHOSPHATE N-ACETYLTRANSFERASE



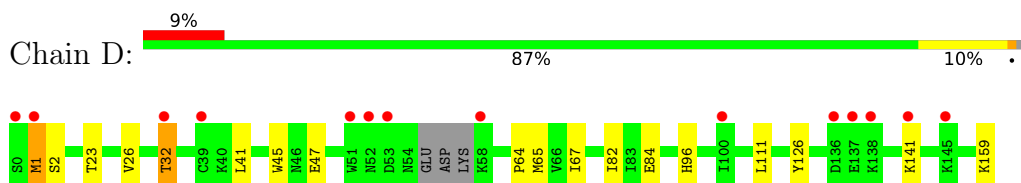
- Molecule 1: GLUCOSAMINE-PHOSPHATE N-ACETYLTRANSFERASE



- Molecule 1: GLUCOSAMINE-PHOSPHATE N-ACETYLTRANSFERASE



- Molecule 1: GLUCOSAMINE-PHOSPHATE N-ACETYLTRANSFERASE



## 4 Data and refinement statistics

Property	Value	Source
Space group	C 1 2 1	Depositor
Cell constants a, b, c, $\alpha$ , $\beta$ , $\gamma$	156.56Å 51.84Å 92.23Å 90.00° 107.81° 90.00°	Depositor
Resolution (Å)	24.86 – 1.30 26.79 – 1.30	Depositor EDS
% Data completeness (in resolution range)	94.3 (24.86-1.30) 93.9 (26.79-1.30)	Depositor EDS
$R_{merge}$	(Not available)	Depositor
$R_{sym}$	0.04	Depositor
$\langle I/\sigma(I) \rangle$ <sup>1</sup>	1.69 (at 1.30Å)	Xtrriage
Refinement program	CNS 1.0	Depositor
R, $R_{free}$	0.210 , 0.221 0.205 , 0.215	Depositor DCC
$R_{free}$ test set	2959 reflections (1.81%)	wwPDB-VP
Wilson B-factor (Å <sup>2</sup> )	12.3	Xtrriage
Anisotropy	0.345	Xtrriage
Bulk solvent $k_{sol}$ (e/Å <sup>3</sup> ), $B_{sol}$ (Å <sup>2</sup> )	0.36 , 43.0	EDS
L-test for twinning <sup>2</sup>	$\langle  L  \rangle = 0.50$ , $\langle L^2 \rangle = 0.34$	Xtrriage
Estimated twinning fraction	No twinning to report.	Xtrriage
$F_o, F_c$ correlation	0.96	EDS
Total number of atoms	5842	wwPDB-VP
Average B, all atoms (Å <sup>2</sup> )	18.0	wwPDB-VP

Xtrriage's analysis on translational NCS is as follows: *The largest off-origin peak in the Patterson function is 5.78% of the height of the origin peak. No significant pseudotranslation is detected.*

<sup>1</sup>Intensities estimated from amplitudes.

<sup>2</sup>Theoretical values of  $\langle |L| \rangle$ ,  $\langle L^2 \rangle$  for acentric reflections are 0.5, 0.333 respectively for untwinned datasets, and 0.375, 0.2 for perfectly twinned datasets.

## 5 Model quality [i](#)

### 5.1 Standard geometry [i](#)

Bond lengths and bond angles in the following residue types are not validated in this section: ACO, IMD

The Z score for a bond length (or angle) is the number of standard deviations the observed value is removed from the expected value. A bond length (or angle) with  $|Z| > 5$  is considered an outlier worth inspection. RMSZ is the root-mean-square of all Z scores of the bond lengths (or angles).

Mol	Chain	Bond lengths		Bond angles	
		RMSZ	# $ Z  > 5$	RMSZ	# $ Z  > 5$
1	A	0.81	0/1306	0.83	0/1757
1	B	0.74	0/1290	0.79	0/1736
1	C	0.70	1/1278 (0.1%)	0.76	1/1723 (0.1%)
1	D	0.63	1/1311 (0.1%)	0.74	0/1760
All	All	0.72	2/5185 (0.0%)	0.78	1/6976 (0.0%)

Chiral center outliers are detected by calculating the chiral volume of a chiral center and verifying if the center is modelled as a planar moiety or with the opposite hand. A planarity outlier is detected by checking planarity of atoms in a peptide group, atoms in a mainchain group or atoms of a sidechain that are expected to be planar.

Mol	Chain	#Chirality outliers	#Planarity outliers
1	B	0	1
1	C	0	1
1	D	0	1
All	All	0	3

All (2) bond length outliers are listed below:

Mol	Chain	Res	Type	Atoms	Z	Observed(Å)	Ideal(Å)
1	C	65	MET	SD-CE	-7.73	1.34	1.77
1	D	65	MET	SD-CE	-6.98	1.38	1.77

All (1) bond angle outliers are listed below:

Mol	Chain	Res	Type	Atoms	Z	Observed(°)	Ideal(°)
1	C	65	MET	CG-SD-CE	-6.56	89.71	100.20

There are no chirality outliers.

All (3) planarity outliers are listed below:



Mol	Chain	Res	Type	Group
1	B	126	TYR	Sidechain
1	C	126	TYR	Sidechain
1	D	126	TYR	Sidechain

## 5.2 Too-close contacts [i](#)

In the following table, the Non-H and H(model) columns list the number of non-hydrogen atoms and hydrogen atoms in the chain respectively. The H(added) column lists the number of hydrogen atoms added and optimized by MolProbity. The Clashes column lists the number of clashes within the asymmetric unit, whereas Symm-Clashes lists symmetry-related clashes.

Mol	Chain	Non-H	H(model)	H(added)	Clashes	Symm-Clashes
1	A	1256	0	1272	29	0
1	B	1243	0	1241	19	0
1	C	1236	0	1238	29	0
1	D	1264	0	1269	12	0
2	A	51	0	34	0	0
2	B	51	0	34	0	0
2	C	51	0	34	1	0
2	D	51	0	33	0	0
3	A	5	0	5	1	0
3	B	5	0	5	1	0
4	A	218	0	0	5	1
4	B	164	0	0	6	1
4	C	140	0	0	6	0
4	D	107	0	0	3	0
All	All	5842	0	5165	80	1

The all-atom clashscore is defined as the number of clashes found per 1000 atoms (including hydrogen atoms). The all-atom clashscore for this structure is 8.

All (80) close contacts within the same asymmetric unit are listed below, sorted by their clash magnitude.

Atom-1	Atom-2	Interatomic distance (Å)	Clash overlap (Å)
1:C:114:LEU:HD23	4:C:1306:HOH:O	1.83	0.78
1:C:19:GLN:HE22	1:C:74:THR:HA	1.49	0.77
1:C:11:ARG:HH21	1:C:46:ASN:HD22	1.33	0.77
3:B:1001:IMD:H4	4:B:1258:HOH:O	1.88	0.73
1:A:9:ILE:HD12	1:A:67[B]:ILE:HD11	1.71	0.72
1:C:84:GLU:OE1	1:C:96:HIS:HE1	1.74	0.70
1:B:11[B]:ARG:HD2	4:B:1325:HOH:O	1.91	0.70

*Continued on next page...*

*Continued from previous page...*

Atom-1	Atom-2	Interatomic distance (Å)	Clash overlap (Å)
1:B:84:GLU:OE1	1:B:96:HIS:HE1	1.77	0.66
1:C:11:ARG:HH21	1:C:46:ASN:ND2	1.93	0.66
1:B:96:HIS:HD2	4:B:1230:HOH:O	1.78	0.65
1:D:67:ILE:HG21	1:D:111:LEU:HD11	1.78	0.65
1:A:89[B]:HIS:NE2	1:C:28:THR:HG21	2.11	0.65
1:B:11[A]:ARG:HG2	4:B:1304:HOH:O	1.98	0.64
1:B:91:LEU:HD22	1:D:41:LEU:HD22	1.79	0.63
1:B:23:THR:HA	1:B:103:ASN:HD21	1.65	0.61
1:D:96:HIS:HD2	4:D:1287:HOH:O	1.83	0.61
1:C:96:HIS:HD2	4:C:1267:HOH:O	1.83	0.60
1:A:135:CYS:HB2	1:A:139:ASN:HD22	1.65	0.60
1:B:23:THR:O	1:B:26[B]:VAL:HG12	2.03	0.58
1:C:84:GLU:OE1	1:C:96:HIS:CE1	2.55	0.58
1:A:9:ILE:HD12	1:A:67[B]:ILE:CD1	2.34	0.58
1:A:84:GLU:OE1	1:A:96:HIS:HE1	1.87	0.57
1:D:84:GLU:OE1	1:D:96:HIS:HE1	1.88	0.57
1:B:49:THR:HG21	1:B:58:LYS:HE3	1.85	0.57
1:A:91:LEU:HD22	1:C:41:LEU:HD22	1.87	0.57
1:A:96:HIS:HD2	4:A:1261:HOH:O	1.88	0.56
1:C:141:LYS:HG2	4:C:1229:HOH:O	2.07	0.55
1:A:61:GLN:HE22	1:C:61:GLN:NE2	2.05	0.54
1:A:61:GLN:NE2	1:C:61:GLN:NE2	2.57	0.53
1:C:36[B]:GLU:OE1	1:C:40:LYS:HE2	2.09	0.53
1:A:45:TRP:CE3	1:A:64:PRO:HG3	2.44	0.52
1:A:89[B]:HIS:CD2	1:C:28:THR:HG21	2.44	0.52
1:D:23:THR:O	1:D:26[A]:VAL:HG22	2.11	0.51
1:A:25:LYS:HB2	4:A:1397:HOH:O	2.12	0.49
1:A:44:TYR:CG	1:C:51:TRP:HB2	2.47	0.49
1:C:141:LYS:HD3	1:C:144:GLU:OE1	2.12	0.49
1:B:84:GLU:OE1	1:B:96:HIS:CE1	2.63	0.49
1:D:32:THR:HA	4:D:1304:HOH:O	2.12	0.49
1:A:118:GLN:HG2	4:A:1322:HOH:O	2.13	0.48
1:B:49:THR:CG2	1:B:58:LYS:HE3	2.43	0.48
1:A:103:ASN:HD22	1:A:103:ASN:H	1.62	0.47
4:A:1342:HOH:O	1:B:137:GLU:HG3	2.13	0.47
1:B:43:LYS:O	1:B:47[B]:GLU:HG3	2.15	0.47
3:A:1002:IMD:H2	4:C:1270:HOH:O	2.15	0.47
1:D:45:TRP:CE3	1:D:64:PRO:HG3	2.49	0.46
1:C:14:GLU:H	1:C:14:GLU:CD	2.18	0.46
1:A:84:GLU:OE1	1:A:96:HIS:CE1	2.67	0.46
1:D:141:LYS:HG3	4:D:1245:HOH:O	2.16	0.45

*Continued on next page...*

Continued from previous page...

Atom-1	Atom-2	Interatomic distance (Å)	Clash overlap (Å)
1:C:14:GLU:HG2	4:C:1236:HOH:O	2.16	0.45
1:D:82:ILE:N	1:D:82:ILE:HD12	2.32	0.45
1:A:21:THR:O	1:A:25:LYS:HG2	2.15	0.45
1:A:11[A]:ARG:NH2	1:A:45:TRP:O	2.49	0.45
1:B:17:LEU:HD13	1:B:38:PHE:CD1	2.52	0.45
1:A:134:ASP:OD1	1:C:134:ASP:OD1	2.35	0.44
1:C:141:LYS:HB2	2:C:1202:ACO:C2A	2.47	0.44
1:D:84:GLU:OE1	1:D:96:HIS:CE1	2.70	0.44
1:D:1:MET:HE2	1:D:2:SER:O	2.18	0.44
1:C:43:LYS:HG2	1:C:47:GLU:OE1	2.18	0.43
1:C:19:GLN:NE2	1:C:75:VAL:H	2.16	0.43
1:B:52:ASN:ND2	4:B:1296:HOH:O	2.50	0.43
1:C:3:LEU:HB3	1:C:4:PRO:HD2	2.01	0.43
1:B:26[B]:VAL:CG1	1:B:101:ALA:HB1	2.48	0.43
1:B:118:GLN:HG2	4:B:1282:HOH:O	2.18	0.43
1:C:118:GLN:HG2	4:C:1277:HOH:O	2.19	0.43
1:C:141:LYS:HD3	1:C:141:LYS:HA	1.86	0.43
1:A:25:LYS:HE2	4:A:1310:HOH:O	2.18	0.42
1:A:61:GLN:NE2	1:C:61:GLN:CD	2.72	0.42
1:C:86:LYS:O	1:C:91:LEU:HA	2.20	0.42
1:A:21:THR:CG2	1:A:25:LYS:HE3	2.50	0.42
1:A:103:ASN:HD22	1:A:103:ASN:N	2.18	0.42
1:A:21:THR:HG22	1:A:25:LYS:HE3	2.02	0.42
1:A:105:LYS:HE2	1:A:106:TYR:CE2	2.55	0.41
1:A:61:GLN:CD	1:C:61:GLN:HE22	2.23	0.41
1:B:17:LEU:HD13	1:B:38:PHE:CG	2.55	0.41
1:A:23:THR:HG23	1:A:103:ASN:ND2	2.35	0.41
1:A:61:GLN:NE2	1:C:61:GLN:OE1	2.54	0.41
1:B:3:LEU:HD23	1:B:114:LEU:HD13	2.02	0.41
1:B:26[A]:VAL:HG22	1:B:101:ALA:HB1	2.03	0.41
1:A:25:LYS:HE2	1:A:30:VAL:HB	2.04	0.40

All (1) symmetry-related close contacts are listed below. The label for Atom-2 includes the symmetry operator and encoded unit-cell translations to be applied.

Atom-1	Atom-2	Interatomic distance (Å)	Clash overlap (Å)
4:A:1344:HOH:O	4:B:1342:HOH:O[2_656]	2.12	0.08

## 5.3 Torsion angles [i](#)

### 5.3.1 Protein backbone [i](#)

In the following table, the Percentiles column shows the percent Ramachandran outliers of the chain as a percentile score with respect to all X-ray entries followed by that with respect to entries of similar resolution.

The Analysed column shows the number of residues for which the backbone conformation was analysed, and the total number of residues.

Mol	Chain	Analysed	Favoured	Allowed	Outliers	Percentiles	
1	A	157/160 (98%)	156 (99%)	1 (1%)	0	100	100
1	B	156/160 (98%)	155 (99%)	1 (1%)	0	100	100
1	C	155/160 (97%)	153 (99%)	2 (1%)	0	100	100
1	D	158/160 (99%)	155 (98%)	3 (2%)	0	100	100
All	All	626/640 (98%)	619 (99%)	7 (1%)	0	100	100

There are no Ramachandran outliers to report.

### 5.3.2 Protein sidechains [i](#)

In the following table, the Percentiles column shows the percent sidechain outliers of the chain as a percentile score with respect to all X-ray entries followed by that with respect to entries of similar resolution.

The Analysed column shows the number of residues for which the sidechain conformation was analysed, and the total number of residues.

Mol	Chain	Analysed	Rotameric	Outliers	Percentiles	
1	A	143/142 (101%)	142 (99%)	1 (1%)	84	61
1	B	140/142 (99%)	137 (98%)	3 (2%)	53	16
1	C	139/142 (98%)	139 (100%)	0	100	100
1	D	144/142 (101%)	141 (98%)	3 (2%)	53	16
All	All	566/568 (100%)	559 (99%)	7 (1%)	73	40

All (7) residues with a non-rotameric sidechain are listed below:

Mol	Chain	Res	Type
1	A	150	ASN
1	B	47[A]	GLU

*Continued on next page...*

*Continued from previous page...*

Mol	Chain	Res	Type
1	B	47[B]	GLU
1	B	105	LYS
1	D	1	MET
1	D	32	THR
1	D	47	GLU

Sometimes sidechains can be flipped to improve hydrogen bonding and reduce clashes. All (14) such sidechains are listed below:

Mol	Chain	Res	Type
1	A	61	GLN
1	A	96	HIS
1	A	139	ASN
1	B	52	ASN
1	B	96	HIS
1	B	103	ASN
1	B	139	ASN
1	C	19	GLN
1	C	46	ASN
1	C	61	GLN
1	C	96	HIS
1	C	139	ASN
1	D	52	ASN
1	D	96	HIS

### 5.3.3 RNA [i](#)

There are no RNA molecules in this entry.

### 5.4 Non-standard residues in protein, DNA, RNA chains [i](#)

There are no non-standard protein/DNA/RNA residues in this entry.

### 5.5 Carbohydrates [i](#)

There are no monosaccharides in this entry.

### 5.6 Ligand geometry [i](#)

6 ligands are modelled in this entry.

In the following table, the Counts columns list the number of bonds (or angles) for which Mogul statistics could be retrieved, the number of bonds (or angles) that are observed in the model and the number of bonds (or angles) that are defined in the Chemical Component Dictionary. The Link column lists molecule types, if any, to which the group is linked. The Z score for a bond length (or angle) is the number of standard deviations the observed value is removed from the expected value. A bond length (or angle) with  $|Z| > 2$  is considered an outlier worth inspection. RMSZ is the root-mean-square of all Z scores of the bond lengths (or angles).

Mol	Type	Chain	Res	Link	Bond lengths			Bond angles		
					Counts	RMSZ	# Z  > 2	Counts	RMSZ	# Z  > 2
2	ACO	D	1203	-	45,53,53	1.50	4 (8%)	56,79,79	1.94	8 (14%)
3	IMD	B	1001	-	3,5,5	0.63	0	4,5,5	1.01	0
2	ACO	B	1200	-	45,53,53	1.32	6 (13%)	56,79,79	1.53	5 (8%)
2	ACO	C	1202	-	45,53,53	1.50	5 (11%)	56,79,79	1.67	6 (10%)
2	ACO	A	1201	-	45,53,53	1.35	7 (15%)	56,79,79	1.47	6 (10%)
3	IMD	A	1002	-	3,5,5	0.73	0	4,5,5	0.97	0

In the following table, the Chirals column lists the number of chiral outliers, the number of chiral centers analysed, the number of these observed in the model and the number defined in the Chemical Component Dictionary. Similar counts are reported in the Torsion and Rings columns. '-' means no outliers of that kind were identified.

Mol	Type	Chain	Res	Link	Chirals	Torsions	Rings
2	ACO	D	1203	-	-	4/47/67/67	0/3/3/3
3	IMD	B	1001	-	-	-	0/1/1/1
2	ACO	B	1200	-	-	6/47/67/67	0/3/3/3
2	ACO	C	1202	-	-	5/47/67/67	0/3/3/3
2	ACO	A	1201	-	-	6/47/67/67	0/3/3/3
3	IMD	A	1002	-	-	-	0/1/1/1

All (22) bond length outliers are listed below:

Mol	Chain	Res	Type	Atoms	Z	Observed(Å)	Ideal(Å)
2	D	1203	ACO	C4A-N3A	4.66	1.42	1.35
2	D	1203	ACO	CH3-C	4.32	1.67	1.50
2	C	1202	ACO	C4A-N3A	4.07	1.41	1.35
2	C	1202	ACO	CH3-C	4.04	1.66	1.50
2	D	1203	ACO	C-S1P	-4.04	1.51	1.75
2	A	1201	ACO	C-S1P	-4.04	1.51	1.75
2	C	1202	ACO	C-S1P	-3.91	1.52	1.75
2	B	1200	ACO	C-S1P	-3.82	1.52	1.75
2	B	1200	ACO	CH3-C	3.76	1.65	1.50
2	A	1201	ACO	CH3-C	3.47	1.64	1.50

*Continued on next page...*

Continued from previous page...

Mol	Chain	Res	Type	Atoms	Z	Observed(Å)	Ideal(Å)
2	C	1202	ACO	O4B-C1B	3.23	1.45	1.41
2	A	1201	ACO	P2A-O4A	-2.72	1.41	1.50
2	D	1203	ACO	P3B-O3B	2.29	1.63	1.59
2	A	1201	ACO	C8A-N7A	-2.29	1.30	1.34
2	B	1200	ACO	O-C	2.29	1.31	1.20
2	B	1200	ACO	P3B-O8A	-2.25	1.46	1.54
2	A	1201	ACO	C2A-N3A	2.25	1.35	1.32
2	C	1202	ACO	C8A-N7A	-2.22	1.30	1.34
2	A	1201	ACO	O-C	2.20	1.31	1.20
2	A	1201	ACO	P1A-O2A	-2.19	1.45	1.55
2	B	1200	ACO	C8A-N7A	-2.07	1.31	1.34
2	B	1200	ACO	C2A-N3A	2.06	1.35	1.32

All (25) bond angle outliers are listed below:

Mol	Chain	Res	Type	Atoms	Z	Observed(°)	Ideal(°)
2	D	1203	ACO	C3P-N4P-C5P	9.51	140.50	122.84
2	C	1202	ACO	C3P-N4P-C5P	7.63	137.01	122.84
2	D	1203	ACO	O-C-CH3	-6.48	96.47	123.07
2	C	1202	ACO	O-C-CH3	-5.71	99.66	123.07
2	B	1200	ACO	C3P-N4P-C5P	5.62	133.28	122.84
2	B	1200	ACO	O-C-CH3	-5.22	101.65	123.07
2	A	1201	ACO	O-C-CH3	-4.97	102.67	123.07
2	A	1201	ACO	C3P-N4P-C5P	4.85	131.84	122.84
2	D	1203	ACO	O4B-C1B-C2B	-3.68	101.56	106.93
2	D	1203	ACO	C2P-C3P-N4P	-3.56	104.93	112.42
2	B	1200	ACO	C2P-C3P-N4P	-3.20	105.69	112.42
2	A	1201	ACO	C2P-C3P-N4P	-3.15	105.80	112.42
2	C	1202	ACO	O4B-C1B-C2B	-3.06	102.45	106.93
2	C	1202	ACO	C2P-C3P-N4P	-2.94	106.24	112.42
2	B	1200	ACO	O4B-C1B-C2B	-2.83	102.79	106.93
2	D	1203	ACO	CH3-C-S1P	2.51	131.54	114.20
2	A	1201	ACO	C6P-C5P-N4P	2.46	120.57	116.42
2	D	1203	ACO	C3B-C2B-C1B	2.39	105.18	99.89
2	C	1202	ACO	CH3-C-S1P	2.21	129.47	114.20
2	A	1201	ACO	O4B-C1B-C2B	-2.19	103.73	106.93
2	D	1203	ACO	O-C-S1P	2.11	131.96	122.60
2	B	1200	ACO	CH3-C-S1P	2.08	128.56	114.20
2	A	1201	ACO	O5P-C5P-N4P	-2.05	119.14	123.01
2	D	1203	ACO	CDP-CBP-CAP	2.03	112.33	108.82
2	C	1202	ACO	C6P-C5P-N4P	2.03	119.83	116.42

There are no chirality outliers.

All (21) torsion outliers are listed below:

Mol	Chain	Res	Type	Atoms
2	A	1201	ACO	C5B-O5B-P1A-O1A
2	A	1201	ACO	C5B-O5B-P1A-O2A
2	B	1200	ACO	C5B-O5B-P1A-O1A
2	B	1200	ACO	C5B-O5B-P1A-O2A
2	C	1202	ACO	C5B-O5B-P1A-O3A
2	D	1203	ACO	C5B-O5B-P1A-O3A
2	B	1200	ACO	C6P-C7P-N8P-C9P
2	C	1202	ACO	C6P-C7P-N8P-C9P
2	D	1203	ACO	C6P-C7P-N8P-C9P
2	A	1201	ACO	C6P-C7P-N8P-C9P
2	B	1200	ACO	P1A-O3A-P2A-O5A
2	C	1202	ACO	C5B-O5B-P1A-O1A
2	D	1203	ACO	C5B-O5B-P1A-O1A
2	A	1201	ACO	P1A-O3A-P2A-O5A
2	C	1202	ACO	P1A-O3A-P2A-O5A
2	D	1203	ACO	P1A-O3A-P2A-O5A
2	A	1201	ACO	C3P-C2P-S1P-C
2	C	1202	ACO	O9P-C9P-CAP-OAP
2	A	1201	ACO	C5B-O5B-P1A-O3A
2	B	1200	ACO	C5B-O5B-P1A-O3A
2	B	1200	ACO	P1A-O3A-P2A-O4A

There are no ring outliers.

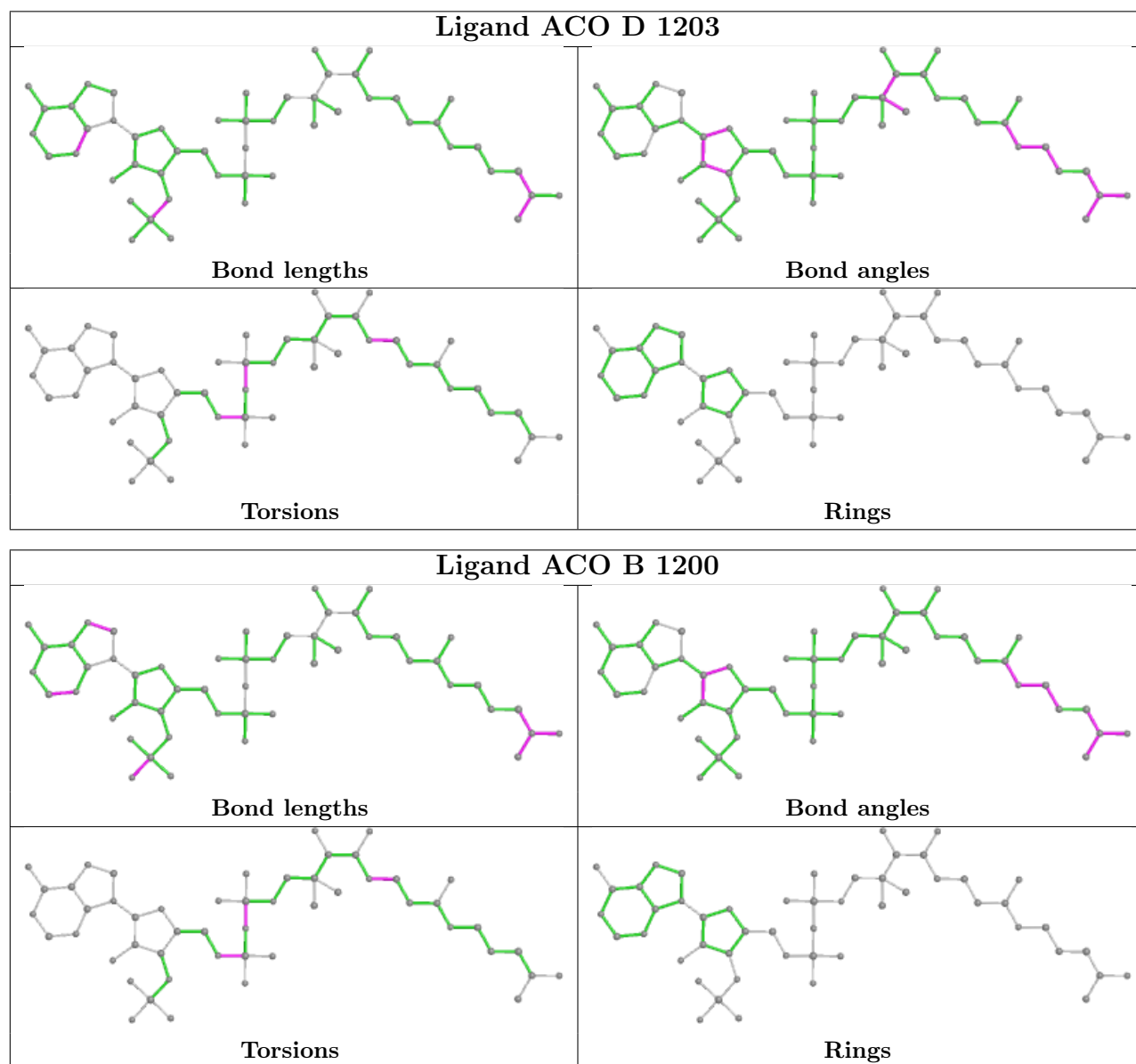
3 monomers are involved in 3 short contacts:

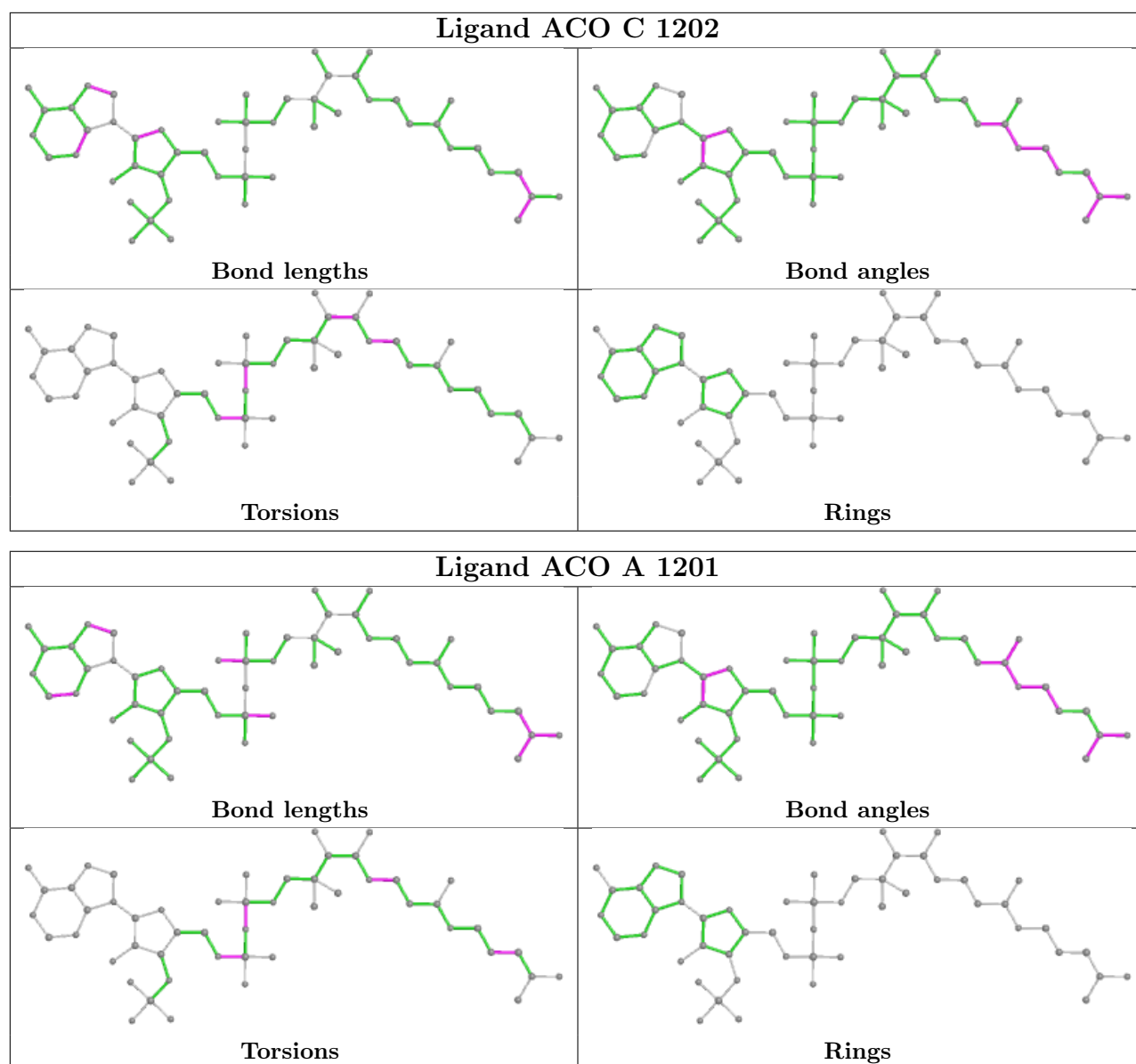
Mol	Chain	Res	Type	Clashes	Symm-Clashes
3	B	1001	IMD	1	0
2	C	1202	ACO	1	0
3	A	1002	IMD	1	0

The following is a two-dimensional graphical depiction of Mogul quality analysis of bond lengths, bond angles, torsion angles, and ring geometry for all instances of the Ligand of Interest. In addition, ligands with molecular weight > 250 and outliers as shown on the validation Tables will also be included. For torsion angles, if less than 5% of the Mogul distribution of torsion angles is within 10 degrees of the torsion angle in question, then that torsion angle is considered an outlier. Any bond that is central to one or more torsion angles identified as an outlier by Mogul will be highlighted in the graph. For rings, the root-mean-square deviation (RMSD) between the ring in question and similar rings identified by Mogul is calculated over all ring torsion angles. If the average RMSD is greater than 60 degrees and the minimal RMSD between the ring in question and any Mogul-identified rings is also greater than 60 degrees, then that ring is considered an outlier.



The outliers are highlighted in purple. The color gray indicates Mogul did not find sufficient equivalents in the CSD to analyse the geometry.





## 5.7 Other polymers [i](#)

There are no such residues in this entry.

## 5.8 Polymer linkage issues [i](#)

There are no chain breaks in this entry.

## 6 Fit of model and data [i](#)

### 6.1 Protein, DNA and RNA chains [i](#)

In the following table, the column labelled ‘#RSRZ > 2’ contains the number (and percentage) of RSRZ outliers, followed by percent RSRZ outliers for the chain as percentile scores relative to all X-ray entries and entries of similar resolution. The OWAB column contains the minimum, median, 95<sup>th</sup> percentile and maximum values of the occupancy-weighted average B-factor per residue. The column labelled ‘Q < 0.9’ lists the number of (and percentage) of residues with an average occupancy less than 0.9.

Mol	Chain	Analysed	<RSRZ>	#RSRZ>2	OWAB(Å <sup>2</sup> )	Q<0.9
1	A	154/160 (96%)	0.47	12 (7%) 13 10	7, 13, 26, 36	0
1	B	154/160 (96%)	0.46	8 (5%) 27 24	8, 14, 26, 32	0
1	C	154/160 (96%)	0.66	17 (11%) 5 4	9, 16, 30, 36	0
1	D	157/160 (98%)	0.70	14 (8%) 9 6	11, 19, 31, 35	0
All	All	619/640 (96%)	0.57	51 (8%) 11 8	7, 15, 29, 36	0

All (51) RSRZ outliers are listed below:

Mol	Chain	Res	Type	RSRZ
1	D	51	TRP	8.1
1	A	51	TRP	5.8
1	C	51	TRP	5.3
1	A	56	ASP	5.1
1	A	3	LEU	5.0
1	D	32	THR	4.9
1	A	5	ASP	4.2
1	A	4	PRO	3.8
1	A	159	LYS	3.7
1	C	0	SER	3.7
1	A	58	LYS	3.7
1	D	138	LYS	3.6
1	C	49	THR	3.4
1	C	47	GLU	3.4
1	C	52	ASN	3.3
1	D	58	LYS	3.3
1	D	39[A]	CYS	3.3
1	B	51	TRP	3.3
1	D	53	ASP	3.3
1	D	52	ASN	3.2
1	D	0	SER	3.0

*Continued on next page...*

*Continued from previous page...*

Mol	Chain	Res	Type	RSRZ
1	D	136[A]	ASP	2.9
1	D	145	LYS	2.9
1	B	52	ASN	2.9
1	A	52	ASN	2.8
1	C	28	THR	2.8
1	B	47[A]	GLU	2.6
1	C	82[A]	ILE	2.5
1	D	1	MET	2.5
1	C	81	ILE	2.5
1	C	97	ILE	2.4
1	D	100	ILE	2.4
1	B	39[A]	CYS	2.4
1	B	81	ILE	2.3
1	C	29[A]	THR	2.3
1	C	58	LYS	2.3
1	C	1	MET	2.3
1	B	2	SER	2.3
1	C	34	THR	2.3
1	A	82	ILE	2.2
1	B	159	LYS	2.2
1	C	14	GLU	2.1
1	C	131	ILE	2.1
1	A	83	ILE	2.1
1	D	137	GLU	2.1
1	A	97	ILE	2.1
1	D	141	LYS	2.0
1	A	81	ILE	2.0
1	B	82	ILE	2.0
1	C	83	ILE	2.0
1	C	115	LEU	2.0

## 6.2 Non-standard residues in protein, DNA, RNA chains [i](#)

There are no non-standard protein/DNA/RNA residues in this entry.

## 6.3 Carbohydrates [i](#)

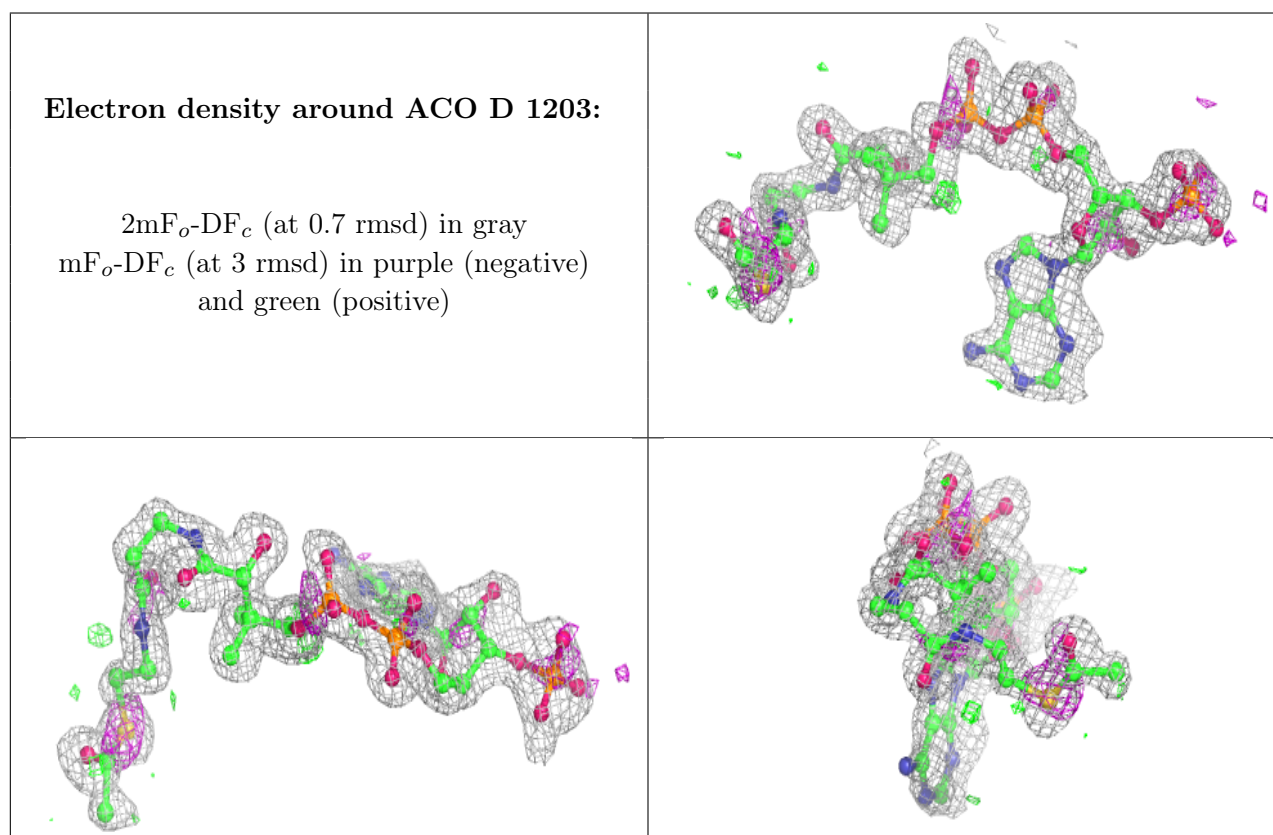
There are no monosaccharides in this entry.

## 6.4 Ligands [i](#)

In the following table, the Atoms column lists the number of modelled atoms in the group and the number defined in the chemical component dictionary. The B-factors column lists the minimum, median, 95<sup>th</sup> percentile and maximum values of B factors of atoms in the group. The column labelled 'Q< 0.9' lists the number of atoms with occupancy less than 0.9.

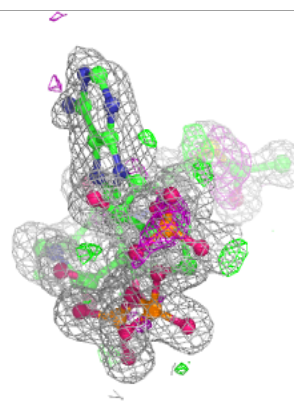
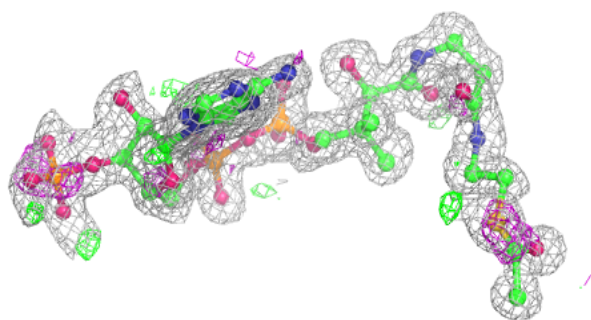
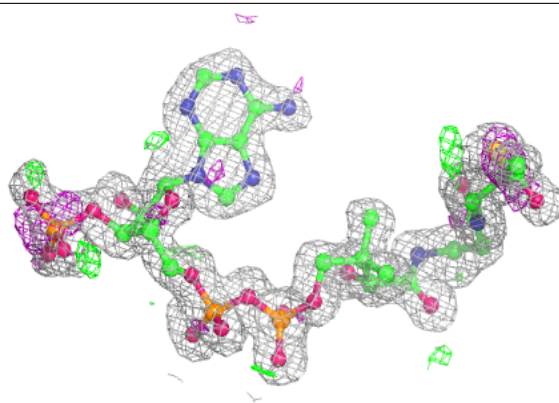
Mol	Type	Chain	Res	Atoms	RSCC	RSR	B-factors( $\text{\AA}^2$ )	Q<0.9
3	IMD	A	1002	5/5	0.78	0.18	33,33,34,34	0
3	IMD	B	1001	5/5	0.86	0.10	19,20,21,21	0
2	ACO	D	1203	51/51	0.89	0.16	20,24,42,43	0
2	ACO	C	1202	51/51	0.94	0.10	12,16,31,32	0
2	ACO	B	1200	51/51	0.97	0.07	8,10,14,17	0
2	ACO	A	1201	51/51	0.98	0.07	7,9,18,23	0

The following is a graphical depiction of the model fit to experimental electron density of all instances of the Ligand of Interest. In addition, ligands with molecular weight > 250 and outliers as shown on the geometry validation Tables will also be included. Each fit is shown from different orientation to approximate a three-dimensional view.

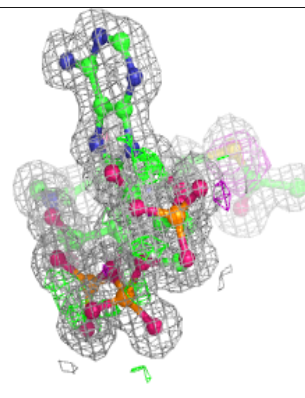
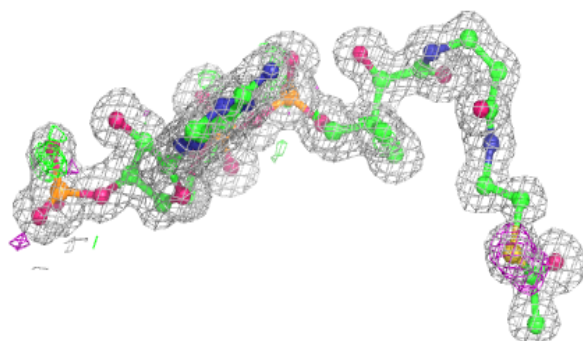
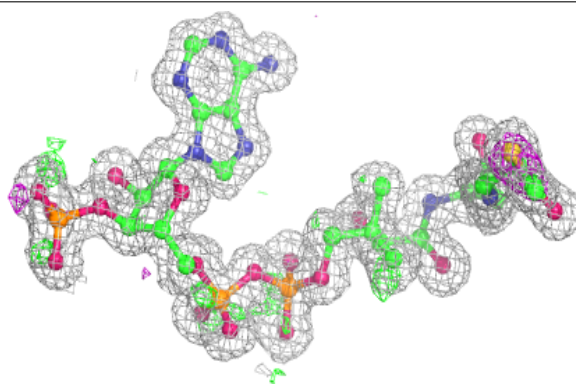


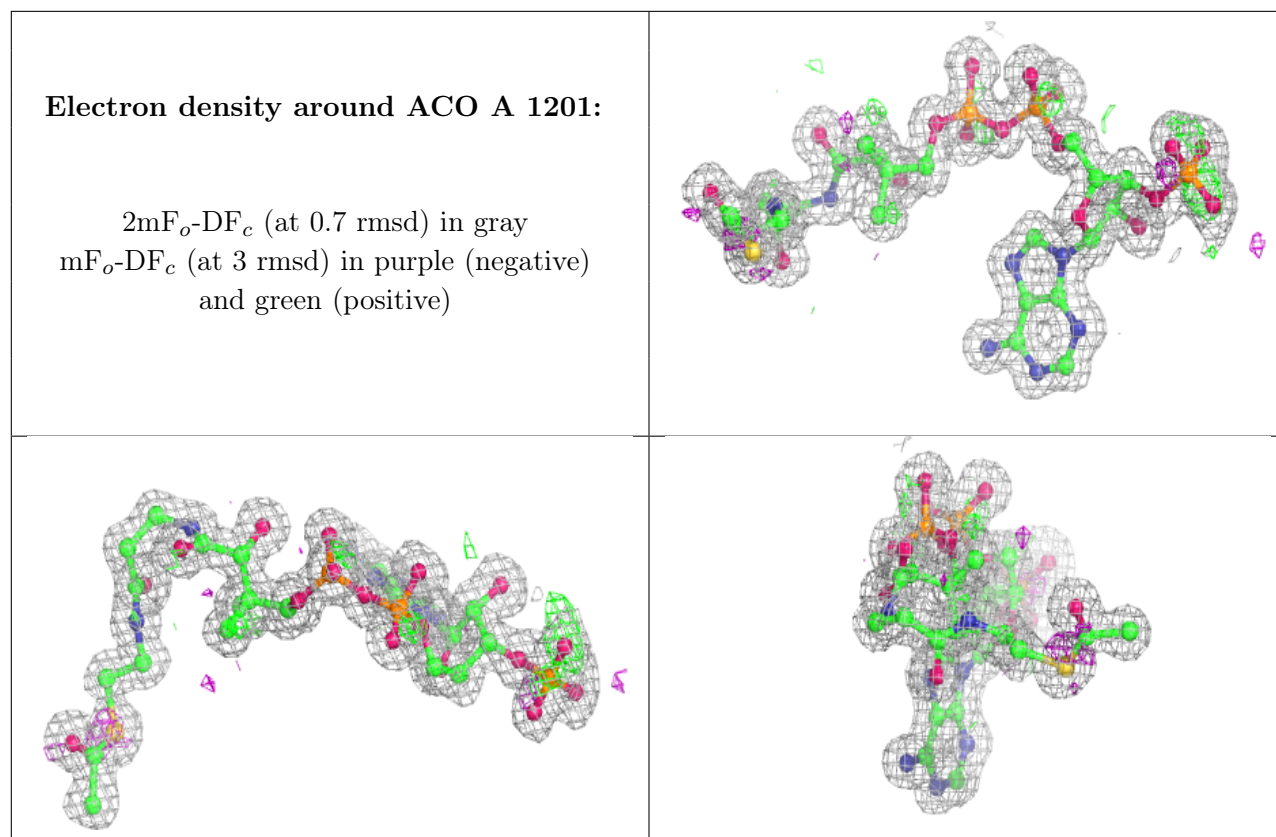
**Electron density around ACO C 1202:**

$2mF_o-DF_c$  (at 0.7 rmsd) in gray  
 $mF_o-DF_c$  (at 3 rmsd) in purple (negative)  
and green (positive)

**Electron density around ACO B 1200:**

$2mF_o-DF_c$  (at 0.7 rmsd) in gray  
 $mF_o-DF_c$  (at 3 rmsd) in purple (negative)  
and green (positive)





## 6.5 Other polymers [i](#)

There are no such residues in this entry.