



wwPDB X-ray Structure Validation Summary Report ⓘ

Aug 3, 2023 – 03:24 AM EDT

PDB ID : 1HQS
Title : CRYSTAL STRUCTURE OF ISOCITRATE DEHYDROGENASE FROM BACILLUS SUBTILIS
Authors : Singh, S.K.; Matsuno, K.; LaPorte, D.C.; Banaszak, L.J.
Deposited on : 2000-12-19
Resolution : 1.55 Å(reported)

This is a wwPDB X-ray Structure Validation Summary Report for a publicly released PDB entry.

We welcome your comments at validation@mail.wwpdb.org

A user guide is available at

<https://www.wwpdb.org/validation/2017/XrayValidationReportHelp>

with specific help available everywhere you see the ⓘ symbol.

The types of validation reports are described at

<http://www.wwpdb.org/validation/2017/FAQs#types>.

The following versions of software and data (see [references ⓘ](#)) were used in the production of this report:

MolProbity : 4.02b-467
Mogul : 1.8.5 (274361), CSD as541be (2020)
Xtriage (Phenix) : 1.13
EDS : 2.34
Percentile statistics : 20191225.v01 (using entries in the PDB archive December 25th 2019)
Refmac : 5.8.0158
CCP4 : 7.0.044 (Gargrove)
Ideal geometry (proteins) : Engh & Huber (2001)
Ideal geometry (DNA, RNA) : Parkinson et al. (1996)
Validation Pipeline (wwPDB-VP) : 2.34

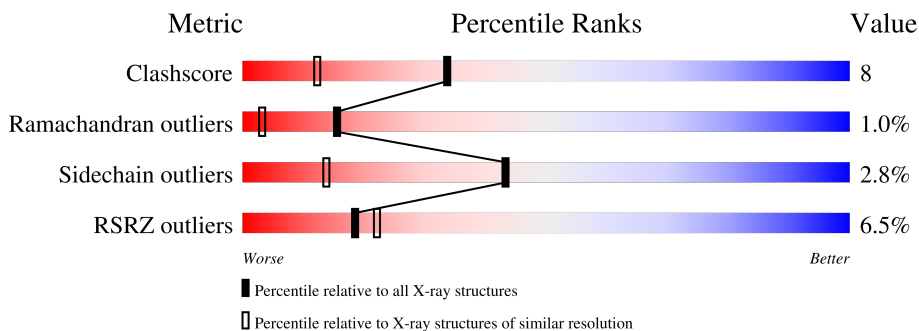
1 Overall quality at a glance

The following experimental techniques were used to determine the structure:

X-RAY DIFFRACTION

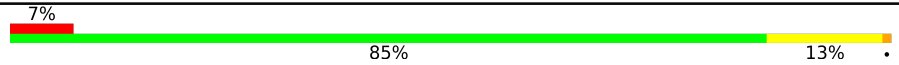

The reported resolution of this entry is 1.55 Å.

Percentile scores (ranging between 0-100) for global validation metrics of the entry are shown in the following graphic. The table shows the number of entries on which the scores are based.



Metric	Whole archive (#Entries)	Similar resolution (#Entries, resolution range(Å))
Clashscore	141614	1529 (1.56-1.56)
Ramachandran outliers	138981	1498 (1.56-1.56)
Sidechain outliers	138945	1495 (1.56-1.56)
RSRZ outliers	127900	1465 (1.56-1.56)

The table below summarises the geometric issues observed across the polymeric chains and their fit to the electron density. The red, orange, yellow and green segments of the lower bar indicate the fraction of residues that contain outliers for ≥ 3 , 2, 1 and 0 types of geometric quality criteria respectively. A grey segment represents the fraction of residues that are not modelled. The numeric value for each fraction is indicated below the corresponding segment, with a dot representing fractions $\leq 5\%$. The upper red bar (where present) indicates the fraction of residues that have poor fit to the electron density. The numeric value is given above the bar.

Mol	Chain	Length	Quality of chain
1	A	423	
1	B	423	

The following table lists non-polymeric compounds, carbohydrate monomers and non-standard residues in protein, DNA, RNA chains that are outliers for geometric or electron-density-fit criteria:

Mol	Type	Chain	Res	Chirality	Geometry	Clashes	Electron density
2	CIT	A	425	-	X	-	-
2	CIT	B	825	-	X	-	-

Continued on next page...

Continued from previous page...

Mol	Type	Chain	Res	Chirality	Geometry	Clashes	Electron density
3	PGO	B	905	-	-	X	-
4	PGR	A	907	-	-	X	-

2 Entry composition [i](#)

There are 5 unique types of molecules in this entry. The entry contains 7445 atoms, of which 0 are hydrogens and 0 are deuteriums.

In the tables below, the ZeroOcc column contains the number of atoms modelled with zero occupancy, the AltConf column contains the number of residues with at least one atom in alternate conformation and the Trace column contains the number of residues modelled with at most 2 atoms.

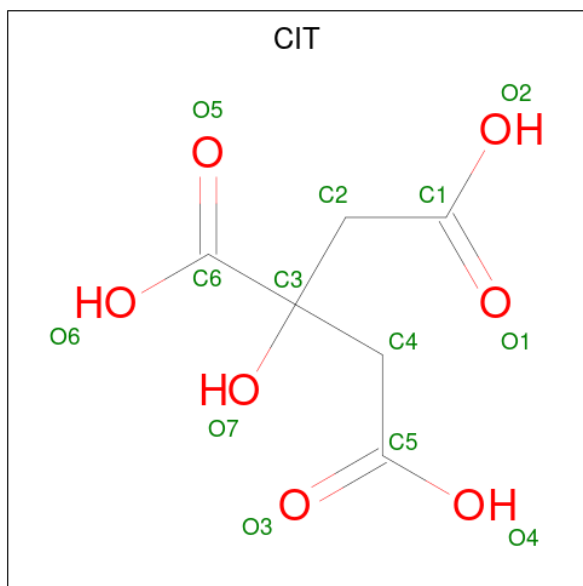
- Molecule 1 is a protein called ISOCITRATE DEHYDROGENASE.

Mol	Chain	Residues	Atoms					ZeroOcc	AltConf	Trace
			Total	C	N	O	S			
1	A	423	Total 3396	C 2160	N 568	O 657	S 11	10	15	0
1	B	423	Total 3380	C 2147	N 562	O 658	S 13	0	13	0

There are 2 discrepancies between the modelled and reference sequences:

Chain	Residue	Modelled	Actual	Comment	Reference
A	118	CME	CYS	modified residue	UNP P39126
B	118	CME	CYS	modified residue	UNP P39126

- Molecule 2 is CITRIC ACID (three-letter code: CIT) (formula: C₆H₈O₇).



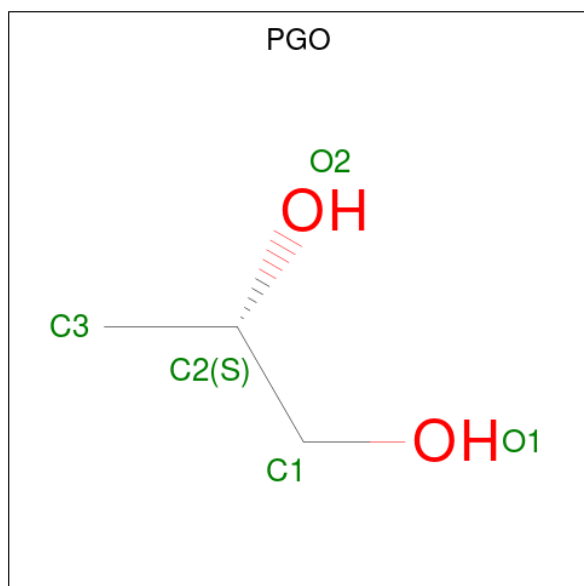
Mol	Chain	Residues	Atoms			ZeroOcc	AltConf
			Total	C	O		
2	A	1	Total 13	C 6	O 7	0	0

Continued on next page...

Continued from previous page...

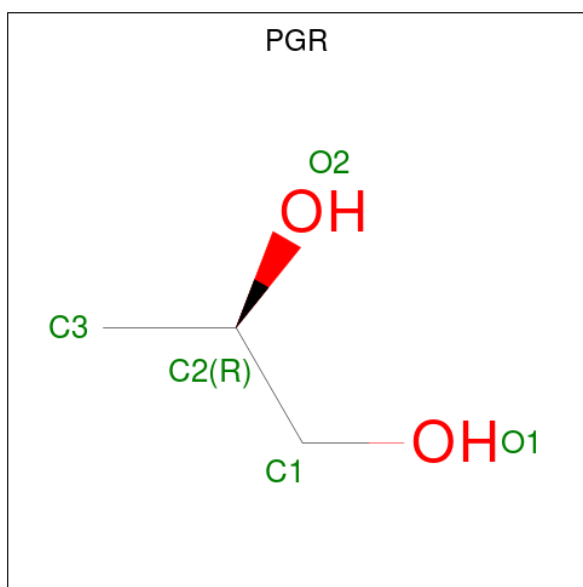
Mol	Chain	Residues	Atoms			ZeroOcc	AltConf
			Total	C	O		
2	B	1	13	6	7	2	0

- Molecule 3 is S-1,2-PROPANEDIOL (three-letter code: PGO) (formula: C₃H₈O₂).



Mol	Chain	Residues	Atoms			ZeroOcc	AltConf
			Total	C	O		
3	A	1	5	3	2	0	0
3	A	1	5	3	2	0	0
3	B	1	5	3	2	0	0
3	B	1	5	3	2	0	0
3	B	1	5	3	2	0	0

- Molecule 4 is R-1,2-PROPANEDIOL (three-letter code: PGR) (formula: C₃H₈O₂).



Mol	Chain	Residues	Atoms	ZeroOcc	AltConf
4	A	1	Total C O 5 3 2	0	0
4	A	1	Total C O 5 3 2	0	0

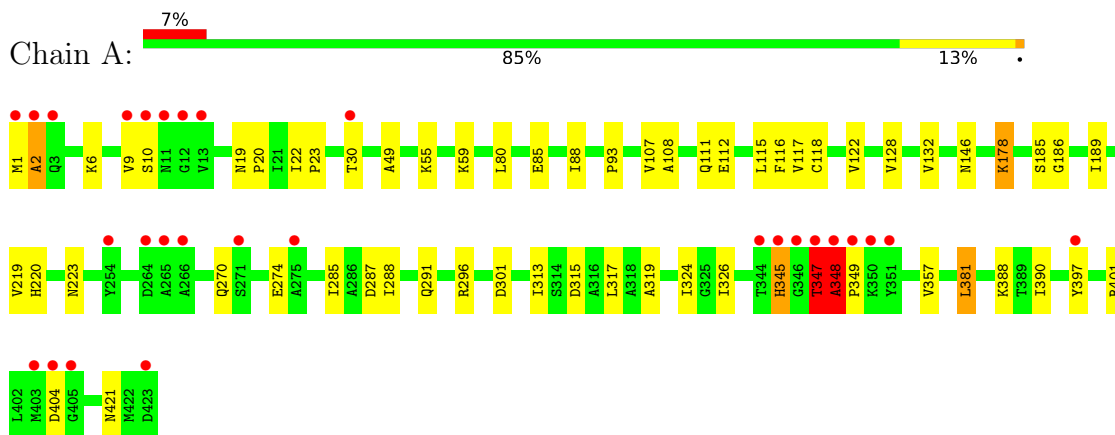
- Molecule 5 is water.

Mol	Chain	Residues	Atoms	ZeroOcc	AltConf
5	A	309	Total O 309 309	0	0
5	B	299	Total O 299 299	0	0

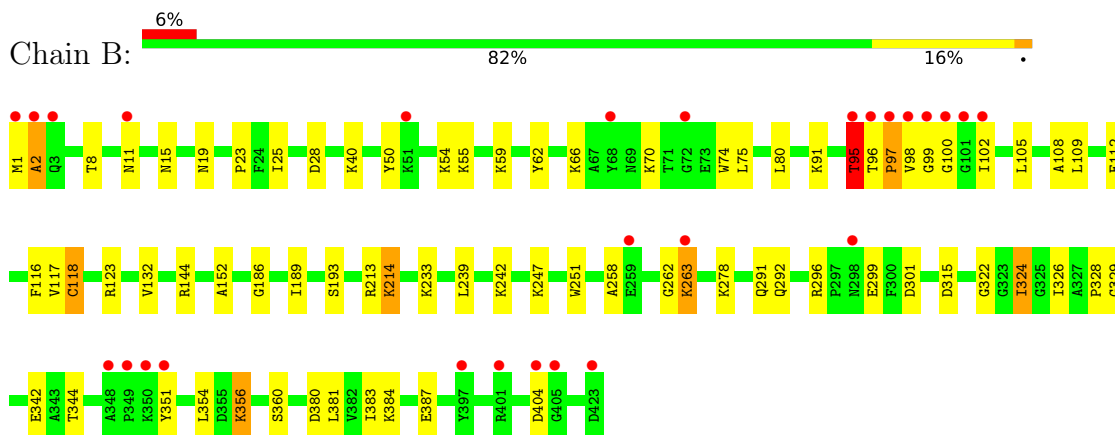
3 Residue-property plots [i](#)

These plots are drawn for all protein, RNA, DNA and oligosaccharide chains in the entry. The first graphic for a chain summarises the proportions of the various outlier classes displayed in the second graphic. The second graphic shows the sequence view annotated by issues in geometry and electron density. Residues are color-coded according to the number of geometric quality criteria for which they contain at least one outlier: green = 0, yellow = 1, orange = 2 and red = 3 or more. A red dot above a residue indicates a poor fit to the electron density ($RSRZ > 2$). Stretches of 2 or more consecutive residues without any outlier are shown as a green connector. Residues present in the sample, but not in the model, are shown in grey.

● Molecule 1: ISOCITRATE DEHYDROGENASE



● Molecule 1: ISOCITRATE DEHYDROGENASE



4 Data and refinement statistics

Property	Value	Source
Space group	P 1 21 1	Depositor
Cell constants a, b, c, α , β , γ	73.69Å 73.29Å 80.90Å 90.00° 109.48° 90.00°	Depositor
Resolution (Å)	20.00 – 1.55 19.72 – 1.50	Depositor EDS
% Data completeness (in resolution range)	92.9 (20.00-1.55) 88.5 (19.72-1.50)	Depositor EDS
R_{merge}	0.08	Depositor
R_{sym}	(Not available)	Depositor
$\langle I/\sigma(I) \rangle$ ¹	1.77 (at 1.50Å)	Xtrriage
Refinement program	X-PLOR 3.843	Depositor
R, R_{free}	0.202 , 0.249 0.189 , (Not available)	Depositor DCC
R_{free} test set	No test flags present.	wwPDB-VP
Wilson B-factor (Å ²)	18.4	Xtrriage
Anisotropy	0.220	Xtrriage
Bulk solvent k_{sol} (e/Å ³), B_{sol} (Å ²)	0.40 , 58.9	EDS
L-test for twinning ²	$\langle L \rangle = 0.49$, $\langle L^2 \rangle = 0.32$	Xtrriage
Estimated twinning fraction	No twinning to report.	Xtrriage
F_o, F_c correlation	0.96	EDS
Total number of atoms	7445	wwPDB-VP
Average B, all atoms (Å ²)	23.0	wwPDB-VP

Xtrriage's analysis on translational NCS is as follows: *The largest off-origin peak in the Patterson function is 5.14% of the height of the origin peak. No significant pseudotranslation is detected.*

¹Intensities estimated from amplitudes.

²Theoretical values of $\langle |L| \rangle$, $\langle L^2 \rangle$ for acentric reflections are 0.5, 0.333 respectively for untwinned datasets, and 0.375, 0.2 for perfectly twinned datasets.

5 Model quality [i](#)

5.1 Standard geometry [i](#)

Bond lengths and bond angles in the following residue types are not validated in this section: PGR, CIT, PGO, CME

The Z score for a bond length (or angle) is the number of standard deviations the observed value is removed from the expected value. A bond length (or angle) with $|Z| > 5$ is considered an outlier worth inspection. RMSZ is the root-mean-square of all Z scores of the bond lengths (or angles).

Mol	Chain	Bond lengths		Bond angles	
		RMSZ	# Z >5	RMSZ	# Z >5
1	A	0.46	0/3449	0.73	3/4665 (0.1%)
1	B	0.48	0/3423	0.68	1/4632 (0.0%)
All	All	0.47	0/6872	0.71	4/9297 (0.0%)

There are no bond length outliers.

All (4) bond angle outliers are listed below:

Mol	Chain	Res	Type	Atoms	Z	Observed(°)	Ideal(°)
1	A	347	THR	N-CA-C	9.29	136.10	111.00
1	A	348	ALA	N-CA-C	-8.49	88.07	111.00
1	A	186	GLY	N-CA-C	-6.70	96.36	113.10
1	B	186	GLY	N-CA-C	-5.89	98.38	113.10

There are no chirality outliers.

There are no planarity outliers.

5.2 Too-close contacts [i](#)

In the following table, the Non-H and H(model) columns list the number of non-hydrogen atoms and hydrogen atoms in the chain respectively. The H(added) column lists the number of hydrogen atoms added and optimized by MolProbity. The Clashes column lists the number of clashes within the asymmetric unit, whereas Symm-Clashes lists symmetry-related clashes.

Mol	Chain	Non-H	H(model)	H(added)	Clashes	Symm-Clashes
1	A	3396	0	3386	54	0
1	B	3380	0	3360	71	0
2	A	13	0	4	0	0
2	B	13	0	3	0	0
3	A	10	0	16	1	0

Continued on next page...

Continued from previous page...

Mol	Chain	Non-H	H(model)	H(added)	Clashes	Symm-Clashes
3	B	15	0	24	7	0
4	A	10	0	16	6	0
5	A	309	0	0	6	0
5	B	299	0	0	13	0
All	All	7445	0	6809	116	0

The all-atom clashscore is defined as the number of clashes found per 1000 atoms (including hydrogen atoms). The all-atom clashscore for this structure is 8.

The worst 5 of 116 close contacts within the same asymmetric unit are listed below, sorted by their clash magnitude.

Atom-1	Atom-2	Interatomic distance (Å)	Clash overlap (Å)
1:A:288[A]:ILE:HD11	4:A:907:PGR:H32	1.18	1.18
1:B:1:MET:HB3	5:B:1297:HOH:O	1.44	1.17
1:A:288[A]:ILE:CD1	4:A:907:PGR:H32	1.81	1.11
1:B:40[B]:LYS:CE	5:B:1243:HOH:O	2.08	1.01
1:B:40[B]:LYS:HE3	5:B:1243:HOH:O	1.59	1.01

There are no symmetry-related clashes.

5.3 Torsion angles [i](#)

5.3.1 Protein backbone [i](#)

In the following table, the Percentiles column shows the percent Ramachandran outliers of the chain as a percentile score with respect to all X-ray entries followed by that with respect to entries of similar resolution.

The Analysed column shows the number of residues for which the backbone conformation was analysed, and the total number of residues.

Mol	Chain	Analysed	Favoured	Allowed	Outliers	Percentiles	
1	A	435/423 (103%)	417 (96%)	13 (3%)	5 (1%)	14	2
1	B	432/423 (102%)	413 (96%)	13 (3%)	6 (1%)	11	1
All	All	867/846 (102%)	830 (96%)	26 (3%)	11 (1%)	15	1

5 of 11 Ramachandran outliers are listed below:

Mol	Chain	Res	Type
1	A	2	ALA
1	A	345[A]	HIS
1	A	345[B]	HIS
1	B	95[A]	THR
1	B	95[B]	THR

5.3.2 Protein sidechains [i](#)

In the following table, the Percentiles column shows the percent sidechain outliers of the chain as a percentile score with respect to all X-ray entries followed by that with respect to entries of similar resolution.

The Analysed column shows the number of residues for which the sidechain conformation was analysed, and the total number of residues.

Mol	Chain	Analysed	Rotameric	Outliers	Percentiles
1	A	357/343 (104%)	349 (98%)	8 (2%)	52 23
1	B	355/343 (104%)	342 (96%)	13 (4%)	34 7
All	All	712/686 (104%)	691 (97%)	21 (3%)	43 13

5 of 21 residues with a non-rotameric sidechain are listed below:

Mol	Chain	Res	Type
1	B	239	LEU
1	B	324	ILE
1	B	404	ASP
1	B	356	LYS
1	B	263	LYS

Sometimes sidechains can be flipped to improve hydrogen bonding and reduce clashes. 5 of 6 such sidechains are listed below:

Mol	Chain	Res	Type
1	B	3	GLN
1	B	172	ASN
1	B	292	GLN
1	A	291	GLN
1	A	164	GLN

5.3.3 RNA [i](#)

There are no RNA molecules in this entry.

5.4 Non-standard residues in protein, DNA, RNA chains

3 non-standard protein/DNA/RNA residues are modelled in this entry.

In the following table, the Counts columns list the number of bonds (or angles) for which Mogul statistics could be retrieved, the number of bonds (or angles) that are observed in the model and the number of bonds (or angles) that are defined in the Chemical Component Dictionary. The Link column lists molecule types, if any, to which the group is linked. The Z score for a bond length (or angle) is the number of standard deviations the observed value is removed from the expected value. A bond length (or angle) with $|Z| > 2$ is considered an outlier worth inspection. RMSZ is the root-mean-square of all Z scores of the bond lengths (or angles).

Mol	Type	Chain	Res	Link	Bond lengths			Bond angles		
					Counts	RMSZ	# Z > 2	Counts	RMSZ	# Z > 2
1	CME	A	118	1	8,9,10	0.89	1 (12%)	5,9,11	1.16	1 (20%)
1	CME	B	118[B]	1	8,9,10	0.96	1 (12%)	5,9,11	1.18	1 (20%)
1	CME	B	118[A]	1	8,9,10	0.97	1 (12%)	5,9,11	1.17	1 (20%)

In the following table, the Chirals column lists the number of chiral outliers, the number of chiral centers analysed, the number of these observed in the model and the number defined in the Chemical Component Dictionary. Similar counts are reported in the Torsion and Rings columns. '-' means no outliers of that kind were identified.

Mol	Type	Chain	Res	Link	Chirals	Torsions	Rings
1	CME	A	118	1	-	2/5/8/10	-
1	CME	B	118[B]	1	-	3/5/8/10	-
1	CME	B	118[A]	1	-	3/5/8/10	-

All (3) bond length outliers are listed below:

Mol	Chain	Res	Type	Atoms	Z	Observed(Å)	Ideal(Å)
1	B	118[A]	CME	OH-CZ	-2.26	1.30	1.42
1	B	118[B]	CME	OH-CZ	-2.21	1.30	1.42
1	A	118	CME	OH-CZ	-2.14	1.31	1.42

All (3) bond angle outliers are listed below:

Mol	Chain	Res	Type	Atoms	Z	Observed(°)	Ideal(°)
1	B	118[B]	CME	OH-CZ-CE	2.51	120.74	110.83
1	B	118[A]	CME	OH-CZ-CE	2.48	120.61	110.83
1	A	118	CME	OH-CZ-CE	2.46	120.52	110.83

There are no chirality outliers.

5 of 8 torsion outliers are listed below:

Mol	Chain	Res	Type	Atoms
1	B	118[B]	CME	CE-SD-SG-CB
1	B	118[B]	CME	CZ-CE-SD-SG
1	B	118[A]	CME	SD-CE-CZ-OH
1	B	118[B]	CME	SD-CE-CZ-OH
1	A	118	CME	N-CA-CB-SG

There are no ring outliers.

2 monomers are involved in 4 short contacts:

Mol	Chain	Res	Type	Clashes	Symm-Clashes
1	B	118[B]	CME	2	0
1	B	118[A]	CME	2	0

5.5 Carbohydrates [i](#)

There are no monosaccharides in this entry.

5.6 Ligand geometry [i](#)

9 ligands are modelled in this entry.

In the following table, the Counts columns list the number of bonds (or angles) for which Mogul statistics could be retrieved, the number of bonds (or angles) that are observed in the model and the number of bonds (or angles) that are defined in the Chemical Component Dictionary. The Link column lists molecule types, if any, to which the group is linked. The Z score for a bond length (or angle) is the number of standard deviations the observed value is removed from the expected value. A bond length (or angle) with $|Z| > 2$ is considered an outlier worth inspection. RMSZ is the root-mean-square of all Z scores of the bond lengths (or angles).

Mol	Type	Chain	Res	Link	Bond lengths			Bond angles		
					Counts	RMSZ	# Z > 2	Counts	RMSZ	# Z > 2
3	PGO	A	901	-	3,4,4	0.63	0	1,4,4	1.85	0
3	PGO	A	902	-	3,4,4	0.43	0	1,4,4	1.58	0
2	CIT	B	825	-	12,12,12	8.61	7 (58%)	17,17,17	3.92	11 (64%)
3	PGO	B	904	-	3,4,4	0.61	0	1,4,4	1.86	0
4	PGR	A	907	-	3,4,4	0.65	0	1,4,4	1.97	0
3	PGO	B	903	-	3,4,4	0.36	0	1,4,4	1.28	0
2	CIT	A	425	-	12,12,12	6.38	9 (75%)	17,17,17	3.82	11 (64%)
3	PGO	B	905	-	3,4,4	0.94	0	1,4,4	0.99	0
4	PGR	A	906	-	3,4,4	0.65	0	1,4,4	1.97	0

In the following table, the Chirals column lists the number of chiral outliers, the number of chiral centers analysed, the number of these observed in the model and the number defined in the Chemical Component Dictionary. Similar counts are reported in the Torsion and Rings columns. '-' means no outliers of that kind were identified.

Mol	Type	Chain	Res	Link	Chirals	Torsions	Rings
3	PGO	A	901	-	-	0/2/2/2	-
3	PGO	A	902	-	-	2/2/2/2	-
2	CIT	B	825	-	-	4/16/16/16	-
3	PGO	B	904	-	-	2/2/2/2	-
4	PGR	A	907	-	-	2/2/2/2	-
3	PGO	B	903	-	-	2/2/2/2	-
2	CIT	A	425	-	-	4/16/16/16	-
3	PGO	B	905	-	-	2/2/2/2	-
4	PGR	A	906	-	-	2/2/2/2	-

The worst 5 of 16 bond length outliers are listed below:

Mol	Chain	Res	Type	Atoms	Z	Observed(Å)	Ideal(Å)
2	B	825	CIT	C4-C3	-24.92	1.22	1.53
2	A	425	CIT	C4-C3	-18.84	1.30	1.53
2	B	825	CIT	O7-C3	9.21	1.61	1.43
2	B	825	CIT	O3-C5	8.47	1.50	1.22
2	B	825	CIT	C2-C3	-6.37	1.45	1.53

The worst 5 of 22 bond angle outliers are listed below:

Mol	Chain	Res	Type	Atoms	Z	Observed(°)	Ideal(°)
2	B	825	CIT	O7-C3-C4	-11.47	82.55	109.40
2	A	425	CIT	C3-C4-C5	8.27	133.83	113.81
2	B	825	CIT	C4-C3-C6	7.06	125.28	110.11
2	A	425	CIT	O7-C3-C4	-6.82	93.44	109.40
2	A	425	CIT	O4-C5-C4	5.20	131.06	114.35

There are no chirality outliers.

5 of 20 torsion outliers are listed below:

Mol	Chain	Res	Type	Atoms
2	A	425	CIT	C2-C3-C4-C5
2	A	425	CIT	O7-C3-C4-C5
2	A	425	CIT	C6-C3-C4-C5
2	B	825	CIT	C2-C3-C4-C5

Continued on next page...

Continued from previous page...

Mol	Chain	Res	Type	Atoms
2	B	825	CIT	O7-C3-C4-C5

There are no ring outliers.

5 monomers are involved in 14 short contacts:

Mol	Chain	Res	Type	Clashes	Symm-Clashes
3	A	901	PGO	1	0
3	B	904	PGO	2	0
4	A	907	PGR	6	0
3	B	903	PGO	1	0
3	B	905	PGO	4	0

5.7 Other polymers [i](#)

There are no such residues in this entry.

5.8 Polymer linkage issues [i](#)

There are no chain breaks in this entry.

6 Fit of model and data [i](#)

6.1 Protein, DNA and RNA chains [i](#)

In the following table, the column labelled ‘#RSRZ> 2’ contains the number (and percentage) of RSRZ outliers, followed by percent RSRZ outliers for the chain as percentile scores relative to all X-ray entries and entries of similar resolution. The OWAB column contains the minimum, median, 95th percentile and maximum values of the occupancy-weighted average B-factor per residue. The column labelled ‘Q< 0.9’ lists the number of (and percentage) of residues with an average occupancy less than 0.9.

Mol	Chain	Analysed	<RSRZ>	#RSRZ>2	OWAB(Å ²)	Q<0.9
1	A	422/423 (99%)	0.41	28 (6%) 18 21	10, 20, 39, 54	3 (0%)
1	B	422/423 (99%)	0.39	27 (6%) 19 23	10, 20, 38, 65	0
All	All	844/846 (99%)	0.40	55 (6%) 18 22	10, 20, 39, 65	3 (0%)

The worst 5 of 55 RSRZ outliers are listed below:

Mol	Chain	Res	Type	RSRZ
1	A	347	THR	11.7
1	B	1	MET	10.4
1	A	2	ALA	8.0
1	B	96[A]	THR	8.0
1	B	2	ALA	7.9

6.2 Non-standard residues in protein, DNA, RNA chains [i](#)

In the following table, the Atoms column lists the number of modelled atoms in the group and the number defined in the chemical component dictionary. The B-factors column lists the minimum, median, 95th percentile and maximum values of B factors of atoms in the group. The column labelled ‘Q< 0.9’ lists the number of atoms with occupancy less than 0.9.

Mol	Type	Chain	Res	Atoms	RSCC	RSR	B-factors(Å ²)	Q<0.9
1	CME	B	118[A]	10/11	0.93	0.14	10,14,21,27	10
1	CME	B	118[B]	10/11	0.93	0.14	14,20,28,31	10
1	CME	A	118	10/11	0.95	0.10	12,14,34,37	0

6.3 Carbohydrates [i](#)

There are no monosaccharides in this entry.

6.4 Ligands [i](#)

In the following table, the Atoms column lists the number of modelled atoms in the group and the number defined in the chemical component dictionary. The B-factors column lists the minimum, median, 95th percentile and maximum values of B factors of atoms in the group. The column labelled 'Q< 0.9' lists the number of atoms with occupancy less than 0.9.

Mol	Type	Chain	Res	Atoms	RSCC	RSR	B-factors(Å ²)	Q<0.9
4	PGR	A	907	5/5	0.60	0.26	42,46,46,49	0
4	PGR	A	906	5/5	0.64	0.24	47,48,50,52	0
3	PGO	B	903	5/5	0.68	0.31	39,40,41,42	0
3	PGO	B	905	5/5	0.72	0.15	32,33,35,38	0
3	PGO	A	901	5/5	0.76	0.18	34,35,36,38	0
3	PGO	A	902	5/5	0.79	0.12	38,38,39,40	0
2	CIT	A	425	13/13	0.80	0.21	30,43,52,54	0
3	PGO	B	904	5/5	0.81	0.26	47,48,49,51	0
2	CIT	B	825	13/13	0.85	0.18	37,47,49,53	2

6.5 Other polymers [i](#)

There are no such residues in this entry.