



Full wwPDB X-ray Structure Validation Report ⓘ

Nov 7, 2023 – 03:18 am GMT

PDB ID : 1H8T
Title : Echovirus 11
Authors : Stuart, A.; McKee, T.; Williams, P.A.; Harley, C.; Stuart, D.I.; Brown, T.D.K.;
Lea, S.M.
Deposited on : 2001-02-15
Resolution : 2.90 Å(reported)

This is a Full wwPDB X-ray Structure Validation Report for a publicly released PDB entry.

We welcome your comments at validation@mail.wwpdb.org

A user guide is available at

<https://www.wwpdb.org/validation/2017/XrayValidationReportHelp>

with specific help available everywhere you see the ⓘ symbol.

The types of validation reports are described at

<http://www.wwpdb.org/validation/2017/FAQs#types>.

The following versions of software and data (see [references ⓘ](#)) were used in the production of this report:

MolProbity : 4.02b-467
Mogul : **NOT EXECUTED**
Xtrriage (Phenix) : **FAILED**
EDS : **NOT EXECUTED**
buster-report : **NOT EXECUTED**
Percentile statistics : 20191225.v01 (using entries in the PDB archive December 25th 2019)
Ideal geometry (proteins) : Engh & Huber (2001)
Ideal geometry (DNA, RNA) : Parkinson et al. (1996)
Validation Pipeline (wwPDB-VP) : 2.36

PERCENTILES INFOmissingINFO

1 Entry composition [i](#)

There are 7 unique types of molecules in this entry. The entry contains 6575 atoms, of which 0 are hydrogens and 0 are deuteriums.

In the tables below, the ZeroOcc column contains the number of atoms modelled with zero occupancy, the AltConf column contains the number of residues with at least one atom in alternate conformation and the Trace column contains the number of residues modelled with at most 2 atoms.

- Molecule 1 is a protein called ECHOVIRUS 11 COAT PROTEIN VP1.

Mol	Chain	Residues	Atoms					ZeroOcc	AltConf	Trace
			Total	C	N	O	S			
1	A	290	2284	1439	399	435	11	0	0	1

There are 14 discrepancies between the modelled and reference sequences:

Chain	Residue	Modelled	Actual	Comment	Reference
A	48	VAL	MET	conflict	UNP P29813
A	78	GLU	GLY	conflict	UNP P29813
A	84	SER	THR	conflict	UNP P29813
A	131	THR	SER	conflict	UNP P29813
A	132	GLN	ARG	conflict	UNP P29813
A	161	THR	ALA	conflict	UNP P29813
A	267	SER	THR	conflict	UNP P29813
A	270	ASP	ASN	conflict	UNP P29813
A	271	ILE	VAL	conflict	UNP P29813
A	276	ASN	THR	conflict	UNP P29813
A	279	THR	ASN	conflict	UNP P29813
A	283	ASP	GLU	conflict	UNP P29813
A	289	VAL	LEU	conflict	UNP P29813
A	292	HIS	TYR	conflict	UNP P29813

- Molecule 2 is a protein called ECHOVIRUS 11 COAT PROTEIN VP2.

Mol	Chain	Residues	Atoms					ZeroOcc	AltConf	Trace
			Total	C	N	O	S			
2	B	253	1964	1240	332	376	16	0	0	1

There are 12 discrepancies between the modelled and reference sequences:

Chain	Residue	Modelled	Actual	Comment	Reference
B	1043	ARG	LYS	conflict	UNP P29813
B	1045	ASP	ASN	conflict	UNP P29813

Continued on next page...

Continued from previous page...

Chain	Residue	Modelled	Actual	Comment	Reference
B	1073	LYS	ARG	conflict	UNP P29813
B	1108	ILE	LEU	conflict	UNP P29813
B	1136	THR	GLN	conflict	UNP P29813
B	1157	ALA	SER	conflict	UNP P29813
B	1159	GLY	SER	conflict	UNP P29813
B	1168	SER	THR	conflict	UNP P29813
B	1185	PHE	TYR	conflict	UNP P29813
B	1230	ASN	ASP	conflict	UNP P29813
B	1235	PHE	SER	conflict	UNP P29813
B	1260	ALA	SER	conflict	UNP P29813

- Molecule 3 is a protein called ECHOVIRUS 11 COAT PROTEIN VP3.

Mol	Chain	Residues	Atoms					ZeroOcc	AltConf	Trace
			Total	C	N	O	S			
3	C	238	1819	1161	299	346	13	0	0	0

There are 13 discrepancies between the modelled and reference sequences:

Chain	Residue	Modelled	Actual	Comment	Reference
C	2005	ILE	MET	conflict	UNP P29813
C	2059	ALA	GLU	conflict	UNP P29813
C	2061	ASN	LYS	conflict	UNP P29813
C	2063	GLU	ASP	conflict	UNP P29813
C	2066	ASP	GLU	conflict	UNP P29813
C	2067	ILE	VAL	conflict	UNP P29813
C	2080	SER	ASP	conflict	UNP P29813
C	2093	GLY	SER	conflict	UNP P29813
C	2107	TYR	PHE	conflict	UNP P29813
C	2144	SER	ASN	conflict	UNP P29813
C	2168	ILE	VAL	conflict	UNP P29813
C	2232	GLN	GLU	conflict	UNP P29813
C	2234	ALA	THR	conflict	UNP P29813

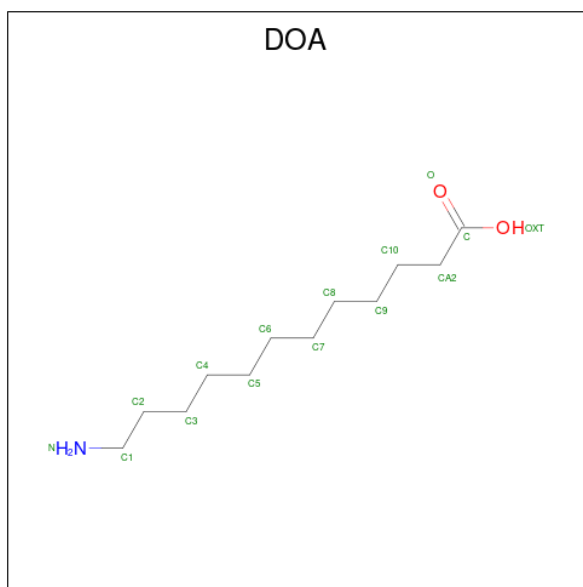
- Molecule 4 is a protein called ECHOVIRUS 11 COAT PROTEIN VP4.

Mol	Chain	Residues	Atoms					ZeroOcc	AltConf	Trace
			Total	C	N	O	S			
4	D	61	467	289	82	95	1	0	0	1

There are 4 discrepancies between the modelled and reference sequences:

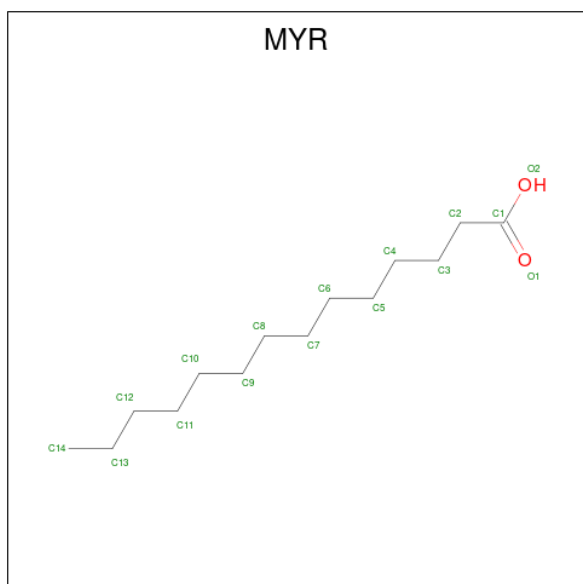
Chain	Residue	Modelled	Actual	Comment	Reference
D	3018	ARG	ASN	conflict	UNP P29813
D	3022	ASN	SER	conflict	UNP P29813
D	3045	ASP	GLU	conflict	UNP P29813
D	3047	THR	SER	conflict	UNP P29813

- Molecule 5 is 12-AMINO-DODECANOIC ACID (three-letter code: DOA) (formula: C₁₂H₂₅NO₂).



Mol	Chain	Residues	Atoms				ZeroOcc	AltConf
			Total	C	N	O		
5	A	1	15	12	1	2	0	0

- Molecule 6 is MYRISTIC ACID (three-letter code: MYR) (formula: C₁₄H₂₈O₂).



Mol	Chain	Residues	Atoms			ZeroOcc	AltConf
6	D	1	Total	C	O	0	0
			15	14	1		

- Molecule 7 is water.

Mol	Chain	Residues	Atoms		ZeroOcc	AltConf
7	A	2	Total	O	0	0
			2	2		
7	B	4	Total	O	0	0
			4	4		
7	C	5	Total	O	0	0
			5	5		

SEQUENCE-PLOTS INFOmissingINFO

2 Data and refinement statistics

Xtrriage (Phenix) failed to run properly; EDS was not executed - this section is therefore incomplete.

Property	Value	Source
Space group	H 3 2	Depositor
Cell constants a, b, c, α , β , γ	300.85Å 300.85Å 1476.62Å 90.00° 90.00° 120.00°	Depositor
Resolution (Å)	100.00 – 2.90	Depositor
% Data completeness (in resolution range)	71.3 (100.00-2.90)	Depositor
R_{merge}	0.22	Depositor
R_{sym}	(Not available)	Depositor
Refinement program	CNS 1.0	Depositor
R, R_{free}	0.246 , 0.255	Depositor
Estimated twinning fraction	No twinning to report.	Xtrriage
Total number of atoms	6575	wwPDB-VP
Average B, all atoms (Å ²)	17.0	wwPDB-VP

3 Model quality i

3.1 Standard geometry i

Bond lengths and bond angles in the following residue types are not validated in this section: DOA, MYR

The Z score for a bond length (or angle) is the number of standard deviations the observed value is removed from the expected value. A bond length (or angle) with $|Z| > 5$ is considered an outlier worth inspection. RMSZ is the root-mean-square of all Z scores of the bond lengths (or angles).

Mol	Chain	Bond lengths		Bond angles	
		RMSZ	# Z >5	RMSZ	# Z >5
1	A	0.77	1/2349 (0.0%)	0.95	3/3208 (0.1%)
2	B	0.77	0/2016	1.05	8/2755 (0.3%)
3	C	0.76	1/1866 (0.1%)	0.99	6/2549 (0.2%)
4	D	0.89	0/475	1.04	3/641 (0.5%)
All	All	0.78	2/6706 (0.0%)	1.00	20/9153 (0.2%)

All (2) bond length outliers are listed below:

Mol	Chain	Res	Type	Atoms	Z	Observed(Å)	Ideal(Å)
1	A	76	MET	SD-CE	6.53	2.14	1.77
3	C	2001	GLY	N-CA	6.04	1.55	1.46

All (20) bond angle outliers are listed below:

Mol	Chain	Res	Type	Atoms	Z	Observed(°)	Ideal(°)
2	B	1195	ASN	N-CA-CB	-8.60	95.12	110.60
2	B	1082	PHE	N-CA-C	8.59	134.20	111.00
3	C	2237	LEU	CB-CG-CD1	-7.95	97.48	111.00
3	C	2197	GLY	N-CA-C	7.88	132.79	113.10
1	A	237	ARG	NE-CZ-NH2	-7.44	116.58	120.30
3	C	2237	LEU	CB-CG-CD2	6.78	122.52	111.00
2	B	1014	ARG	NE-CZ-NH2	-6.68	116.96	120.30
3	C	2005	ILE	CB-CA-C	-5.94	99.72	111.60
3	C	2225	LEU	CA-CB-CG	5.94	128.97	115.30
2	B	1029	ALA	N-CA-C	-5.86	95.17	111.00
2	B	1125	VAL	CB-CA-C	-5.78	100.42	111.40
4	D	3012	ALA	N-CA-C	5.62	126.18	111.00
2	B	1215	ARG	CG-CD-NE	5.62	123.61	111.80
2	B	1082	PHE	C-N-CA	-5.57	98.59	122.00
1	A	284	THR	N-CA-C	-5.55	96.01	111.00

Continued on next page...

Continued from previous page...

Mol	Chain	Res	Type	Atoms	Z	Observed(°)	Ideal(°)
3	C	2154	ILE	CB-CA-C	-5.43	100.74	111.60
1	A	128	ASP	CB-CG-OD2	-5.24	113.58	118.30
4	D	3058	LYS	N-CA-C	-5.23	96.88	111.00
2	B	1170	VAL	CB-CA-C	-5.10	101.71	111.40
4	D	3064	SER	N-CA-C	-5.06	97.33	111.00

There are no chirality outliers.

There are no planarity outliers.

3.2 Too-close contacts [i](#)

In the following table, the Non-H and H(model) columns list the number of non-hydrogen atoms and hydrogen atoms in the chain respectively. The H(added) column lists the number of hydrogen atoms added and optimized by MolProbity. The Clashes column lists the number of clashes within the asymmetric unit, whereas Symm-Clashes lists symmetry-related clashes.

Mol	Chain	Non-H	H(model)	H(added)	Clashes	Symm-Clashes
1	A	2284	0	2212	150	0
2	B	1964	0	1874	65	0
3	C	1819	0	1772	111	0
4	D	467	0	447	47	0
5	A	15	0	18	2	0
6	D	15	0	27	1	0
7	A	2	0	0	1	0
7	B	4	0	0	0	0
7	C	5	0	0	0	0
All	All	6575	0	6350	303	0

The all-atom clashscore is defined as the number of clashes found per 1000 atoms (including hydrogen atoms). The all-atom clashscore for this structure is 23.

All (303) close contacts within the same asymmetric unit are listed below, sorted by their clash magnitude.

Atom-1	Atom-2	Interatomic distance (Å)	Clash overlap (Å)
1:A:76:MET:SD	1:A:76:MET:CE	2.14	1.34
1:A:260:ASN:OD1	1:A:263:THR:HG22	1.49	1.09
3:C:2098:THR:HG22	3:C:2101:GLY:H	1.20	1.04
3:C:2233:GLN:NE2	3:C:2238:GLN:HG2	1.73	1.04
4:D:3054:THR:O	4:D:3055:GLU:HB2	1.51	1.04
1:A:101:VAL:HB	3:C:2238:GLN:OE1	1.60	1.01

Continued on next page...

Continued from previous page...

Atom-1	Atom-2	Interatomic distance (Å)	Clash overlap (Å)
2:B:1234:ASP:O	2:B:1236:SER:N	1.92	1.01
3:C:2196:THR:HG23	3:C:2196:THR:O	1.58	0.99
2:B:1025:THR:HG21	2:B:1197:CYS:SG	2.03	0.98
1:A:275:ARG:HE	3:C:2057:ASN:HD21	1.08	0.93
3:C:2233:GLN:HE22	3:C:2238:GLN:HG2	1.34	0.92
3:C:2233:GLN:CD	3:C:2238:GLN:HE21	1.74	0.90
1:A:101:VAL:HB	3:C:2238:GLN:CD	1.92	0.89
2:B:1082:PHE:O	2:B:1083:PRO:C	2.01	0.86
1:A:38:HIS:HD2	4:D:3055:GLU:HG3	1.39	0.85
2:B:1030:ASN:HD21	4:D:3059:ASP:HB2	1.42	0.84
3:C:2129:LYS:HB2	3:C:2196:THR:HG22	1.59	0.84
1:A:252:PRO:HD3	2:B:1184:ILE:HD11	1.57	0.84
3:C:2154:ILE:HD11	3:C:2166:LEU:HA	1.59	0.84
3:C:2233:GLN:HB3	3:C:2238:GLN:NE2	1.93	0.83
1:A:159:ASP:OD1	1:A:161:THR:HB	1.78	0.83
1:A:128:ASP:OD2	1:A:233:THR:HG22	1.77	0.83
4:D:3002:GLY:N	6:D:3500:MYR:O1	2.13	0.82
1:A:101:VAL:HB	3:C:2238:GLN:NE2	1.95	0.81
4:D:3047:THR:HG22	4:D:3048:GLN:H	1.44	0.80
1:A:6:ALA:O	1:A:7:VAL:HG23	1.82	0.80
1:A:59:ARG:NH1	4:D:3048:GLN:HE22	1.79	0.80
3:C:2057:ASN:H	3:C:2057:ASN:HD22	1.27	0.79
1:A:83:ASN:ND2	1:A:84:SER:H	1.80	0.79
3:C:2042:ASN:HD22	3:C:2044:MET:H	1.28	0.79
3:C:2196:THR:O	3:C:2196:THR:CG2	2.29	0.79
4:D:3054:THR:O	4:D:3055:GLU:CB	2.31	0.79
2:B:1233:SER:O	2:B:1235:PHE:CD2	2.36	0.79
2:B:1193:ARG:HG3	2:B:1194:THR:HG23	1.63	0.78
3:C:2095:PHE:O	3:C:2098:THR:HB	1.82	0.78
3:C:2228:THR:HG22	3:C:2229:PRO:HD2	1.65	0.78
1:A:81:THR:HG21	1:A:232:MET:HB2	1.64	0.78
1:A:4:VAL:CG1	4:D:3036:ALA:HB1	2.14	0.78
1:A:38:HIS:CD2	4:D:3055:GLU:HG3	2.19	0.76
3:C:2057:ASN:HA	3:C:2067:ILE:HG13	1.67	0.76
1:A:128:ASP:OD2	1:A:233:THR:CG2	2.36	0.74
1:A:164:THR:HG21	1:A:169:SER:OG	1.87	0.74
4:D:3058:LYS:O	4:D:3059:ASP:HB2	1.86	0.74
2:B:1117:PHE:CD2	3:C:2204:THR:HG22	2.22	0.74
1:A:32:THR:HB	4:D:3063:LYS:HE3	1.70	0.74
1:A:99:ARG:C	3:C:2238:GLN:HB2	2.10	0.72
2:B:1190:ILE:HA	2:B:1195:ASN:ND2	2.05	0.72

Continued on next page...

Continued from previous page...

Atom-1	Atom-2	Interatomic distance (Å)	Clash overlap (Å)
3:C:2057:ASN:HD22	3:C:2057:ASN:N	1.87	0.72
1:A:32:THR:HA	4:D:3063:LYS:HE2	1.71	0.72
1:A:3:VAL:HG23	1:A:3:VAL:O	1.90	0.70
1:A:269:THR:H	2:B:1172:ASN:HD21	1.39	0.70
1:A:81:THR:HG22	1:A:232:MET:O	1.92	0.70
1:A:101:VAL:CG1	3:C:2238:GLN:NE2	2.55	0.69
2:B:1142:ASN:HB3	2:B:1145:GLY:H	1.55	0.69
1:A:209:GLY:O	1:A:212:THR:HG23	1.91	0.69
3:C:2173:GLN:HG2	3:C:2174:THR:HG23	1.74	0.69
3:C:2005:ILE:HD12	3:C:2005:ILE:H	1.58	0.69
3:C:2107:TYR:O	3:C:2226:LYS:HE3	1.92	0.69
3:C:2072:VAL:HG13	3:C:2198:ILE:CD1	2.23	0.68
4:D:3007:THR:HA	4:D:3026:HIS:HB3	1.73	0.68
3:C:2233:GLN:HB3	3:C:2238:GLN:HE21	1.57	0.68
1:A:99:ARG:O	3:C:2238:GLN:HB2	1.93	0.68
2:B:1151:THR:O	2:B:1152:ALA:HB2	1.93	0.68
1:A:4:VAL:HG12	4:D:3036:ALA:HB1	1.75	0.67
1:A:85:ASP:O	1:A:87:THR:N	2.25	0.67
4:D:3003:ALA:HB2	4:D:3030:ILE:HG12	1.77	0.67
3:C:2236:LEU:C	3:C:2238:GLN:N	2.48	0.67
1:A:6:ALA:HB1	4:D:3040:SER:OG	1.94	0.66
1:A:105:ARG:HD3	3:C:2231:ILE:HG12	1.76	0.66
2:B:1194:THR:HG21	3:C:2162:SER:HB3	1.78	0.66
1:A:100:MET:CA	3:C:2238:GLN:HG3	2.26	0.66
1:A:101:VAL:CB	3:C:2238:GLN:OE1	2.43	0.66
3:C:2180:GLN:O	3:C:2180:GLN:HG3	1.94	0.66
1:A:263:THR:HG23	1:A:265:ASN:H	1.61	0.65
3:C:2098:THR:HG22	3:C:2101:GLY:N	2.04	0.65
1:A:101:VAL:CB	3:C:2238:GLN:NE2	2.60	0.64
2:B:1084:ASP:O	2:B:1085:ALA:CB	2.46	0.64
1:A:12:ALA:HB2	4:D:3046:PHE:HB3	1.80	0.64
3:C:2129:LYS:HB2	3:C:2196:THR:CG2	2.28	0.64
3:C:2200:VAL:HG22	3:C:2201:PRO:HD2	1.79	0.64
4:D:3055:GLU:H	4:D:3056:PRO:CD	2.11	0.64
1:A:286:LYS:HD2	1:A:289:VAL:HB	1.80	0.63
4:D:3066:PRO:O	4:D:3067:ALA:HB3	1.98	0.63
1:A:80:HIS:CD2	1:A:233:THR:HB	2.32	0.63
2:B:1184:ILE:HD12	2:B:1184:ILE:N	2.14	0.63
1:A:101:VAL:CG1	3:C:2238:GLN:HE22	2.10	0.63
1:A:145:MET:SD	1:A:164:THR:HG23	2.39	0.63
1:A:72:ALA:CB	1:A:103:MET:HG2	2.29	0.62

Continued on next page...

Continued from previous page...

Atom-1	Atom-2	Interatomic distance (Å)	Clash overlap (Å)
1:A:81:THR:CG2	1:A:232:MET:H	2.12	0.62
2:B:1117:PHE:HD2	3:C:2204:THR:HG22	1.63	0.62
3:C:2072:VAL:HG13	3:C:2198:ILE:HD12	1.80	0.62
1:A:101:VAL:HG12	3:C:2238:GLN:NE2	2.15	0.62
1:A:101:VAL:HB	3:C:2238:GLN:HE22	1.65	0.62
4:D:3006:SER:O	4:D:3026:HIS:HB2	2.00	0.62
3:C:2228:THR:HG22	3:C:2229:PRO:CD	2.29	0.62
1:A:164:THR:HG22	1:A:167:ASN:HB2	1.82	0.62
1:A:207:VAL:HG22	1:A:212:THR:HG22	1.82	0.61
2:B:1056:PRO:HB2	2:B:1060:THR:HB	1.82	0.61
3:C:2018:ASP:OD2	4:D:3043:ARG:HD2	2.01	0.61
1:A:200:SER:HB3	1:A:207:VAL:HG13	1.83	0.61
4:D:3047:THR:HG22	4:D:3048:GLN:N	2.15	0.61
1:A:105:ARG:HD3	3:C:2231:ILE:CG1	2.31	0.60
1:A:13:ARG:HH11	1:A:13:ARG:HG3	1.66	0.60
2:B:1151:THR:O	2:B:1152:ALA:CB	2.48	0.60
2:B:1184:ILE:HD12	2:B:1184:ILE:H	1.66	0.60
1:A:72:ALA:HB3	1:A:103:MET:HG2	1.83	0.59
3:C:2233:GLN:CB	3:C:2238:GLN:HE21	2.15	0.59
1:A:286:LYS:C	1:A:288:ASP:H	2.04	0.59
2:B:1020:ASN:HD21	2:B:1062:ARG:HH21	1.51	0.59
1:A:100:MET:HA	3:C:2238:GLN:HG3	1.82	0.59
1:A:81:THR:HG21	1:A:232:MET:CB	2.32	0.59
1:A:81:THR:CG2	1:A:232:MET:HB2	2.31	0.58
2:B:1151:THR:OG1	2:B:1152:ALA:N	2.34	0.58
3:C:2042:ASN:ND2	3:C:2044:MET:H	1.99	0.58
4:D:3055:GLU:H	4:D:3056:PRO:HD3	1.67	0.58
3:C:2057:ASN:H	3:C:2057:ASN:ND2	2.00	0.58
1:A:195:PHE:CE1	1:A:251:ARG:HD2	2.39	0.58
1:A:3:VAL:HG21	1:A:246:LYS:HG3	1.86	0.57
1:A:59:ARG:NH1	4:D:3048:GLN:NE2	2.50	0.57
1:A:85:ASP:O	1:A:85:ASP:OD1	2.22	0.57
3:C:2233:GLN:CD	3:C:2238:GLN:NE2	2.54	0.57
1:A:252:PRO:HG2	2:B:1177:VAL:HG11	1.86	0.57
1:A:12:ALA:HB2	4:D:3046:PHE:CB	2.35	0.56
1:A:9:ASN:O	1:A:10:ALA:HB3	2.04	0.56
3:C:2233:GLN:CG	3:C:2238:GLN:HE21	2.18	0.56
1:A:44:PRO:HB3	3:C:2169:PRO:HB3	1.87	0.56
3:C:2107:TYR:CE2	3:C:2225:LEU:HD13	2.40	0.56
3:C:2049:VAL:HA	4:D:3054:THR:HG22	1.87	0.56
1:A:99:ARG:HA	3:C:2238:GLN:HB2	1.87	0.55

Continued on next page...

Continued from previous page...

Atom-1	Atom-2	Interatomic distance (Å)	Clash overlap (Å)
1:A:249:VAL:O	1:A:249:VAL:HG22	2.05	0.55
2:B:1012:ARG:HG3	2:B:1012:ARG:HH11	1.71	0.55
1:A:59:ARG:HH11	4:D:3048:GLN:NE2	2.05	0.55
1:A:272:THR:HG22	3:C:2067:ILE:HD11	1.88	0.55
4:D:3066:PRO:O	4:D:3067:ALA:CB	2.54	0.55
1:A:101:VAL:CB	3:C:2238:GLN:CD	2.71	0.55
1:A:32:THR:CB	4:D:3063:LYS:HE3	2.37	0.54
2:B:1063:PHE:CD1	2:B:1246:ALA:HB2	2.41	0.54
2:B:1193:ARG:NH1	3:C:2123:SER:O	2.40	0.54
3:C:2154:ILE:HD11	3:C:2166:LEU:CA	2.35	0.54
1:A:180:ARG:C	1:A:181:MET:HG3	2.28	0.54
1:A:245:VAL:HG12	1:A:246:LYS:N	2.23	0.54
1:A:289:VAL:CG1	1:A:290:SER:N	2.70	0.54
1:A:99:ARG:O	3:C:2238:GLN:CG	2.56	0.54
1:A:83:ASN:ND2	1:A:84:SER:N	2.54	0.53
1:A:7:VAL:HG22	4:D:3027:TYR:OH	2.08	0.53
4:D:3062:VAL:HB	4:D:3065:LEU:HD13	1.91	0.53
1:A:13:ARG:HG3	1:A:13:ARG:NH1	2.24	0.53
3:C:2107:TYR:O	3:C:2179:VAL:HG11	2.09	0.53
3:C:2236:LEU:C	3:C:2238:GLN:H	2.11	0.53
1:A:59:ARG:HH11	4:D:3048:GLN:HE22	1.55	0.52
1:A:275:ARG:HE	3:C:2057:ASN:ND2	1.92	0.52
1:A:93:TRP:O	1:A:218:GLN:HB2	2.08	0.52
2:B:1084:ASP:O	2:B:1085:ALA:HB2	2.09	0.52
2:B:1233:SER:O	2:B:1235:PHE:HD2	1.90	0.52
3:C:2180:GLN:O	3:C:2180:GLN:CG	2.57	0.52
1:A:28:VAL:HG13	1:A:28:VAL:O	2.10	0.52
2:B:1012:ARG:HG3	2:B:1012:ARG:NH1	2.24	0.52
3:C:2005:ILE:HD12	3:C:2005:ILE:N	2.25	0.52
1:A:73:CYS:SG	1:A:100:MET:CE	2.98	0.52
1:A:79:TYR:OH	1:A:142:HIS:HD2	1.93	0.52
1:A:28:VAL:N	1:A:29:PRO:HD3	2.24	0.51
1:A:79:TYR:OH	1:A:142:HIS:CD2	2.63	0.51
1:A:99:ARG:O	3:C:2238:GLN:CB	2.57	0.51
1:A:183:ILE:HG12	5:A:1000:DOA:H31	1.92	0.51
3:C:2051:SER:HB3	3:C:2099:LEU:HD22	1.93	0.51
1:A:101:VAL:CB	3:C:2238:GLN:HE22	2.23	0.51
1:A:170:ILE:HD11	1:A:181:MET:HG2	1.92	0.51
4:D:3011:GLY:O	4:D:3013:HIS:N	2.41	0.51
1:A:99:ARG:CA	3:C:2238:GLN:HB2	2.41	0.50
1:A:129:GLN:NE2	1:A:130:GLY:H	2.10	0.50

Continued on next page...

Continued from previous page...

Atom-1	Atom-2	Interatomic distance (Å)	Clash overlap (Å)
2:B:1125:VAL:HG13	2:B:1187:HIS:HB3	1.93	0.50
1:A:99:ARG:HD3	3:C:2237:LEU:HA	1.92	0.50
1:A:172:TRP:CD1	1:A:179:PRO:HG3	2.47	0.50
1:A:64:ILE:HD12	3:C:2040:VAL:O	2.12	0.50
1:A:101:VAL:CG2	3:C:2231:ILE:HG13	2.42	0.50
1:A:286:LYS:O	1:A:288:ASP:N	2.44	0.50
1:A:250:PRO:HD3	3:C:2040:VAL:CG2	2.42	0.50
1:A:111:THR:OG1	1:A:249:VAL:HG22	2.11	0.49
2:B:1148:GLU:OE2	2:B:1153:LYS:HE3	2.12	0.49
1:A:157:VAL:HG23	1:A:158:THR:HG23	1.94	0.49
3:C:2133:ALA:O	3:C:2190:VAL:HA	2.13	0.49
3:C:2233:GLN:CD	3:C:2238:GLN:HG2	2.32	0.49
1:A:154:PRO:HG3	1:A:161:THR:CG2	2.43	0.49
1:A:249:VAL:O	1:A:249:VAL:CG2	2.60	0.49
1:A:275:ARG:NE	3:C:2057:ASN:HD21	1.92	0.49
2:B:1052:GLN:HE21	2:B:1053:PRO:HD2	1.78	0.49
3:C:2173:GLN:HG2	3:C:2174:THR:N	2.28	0.49
2:B:1080:TRP:CE2	2:B:1152:ALA:HB2	2.47	0.49
1:A:99:ARG:O	3:C:2238:GLN:HG3	2.12	0.48
2:B:1033:VAL:O	2:B:1034:GLY:C	2.51	0.48
2:B:1031:VAL:HB	4:D:3058:LYS:HG2	1.94	0.48
1:A:3:VAL:O	1:A:3:VAL:CG2	2.59	0.48
1:A:85:ASP:OD1	1:A:87:THR:HB	2.13	0.48
1:A:263:THR:HG21	1:A:265:ASN:HB2	1.96	0.48
3:C:2072:VAL:HG13	3:C:2198:ILE:HD11	1.94	0.48
1:A:81:THR:HG23	1:A:232:MET:H	1.78	0.47
1:A:101:VAL:HG21	3:C:2231:ILE:HD12	1.94	0.47
1:A:264:VAL:HG23	7:A:2001:HOH:O	2.14	0.47
1:A:285:VAL:HG12	1:A:285:VAL:O	2.14	0.47
2:B:1062:ARG:HG3	2:B:1062:ARG:HH11	1.80	0.47
2:B:1234:ASP:C	2:B:1236:SER:H	2.08	0.47
1:A:128:ASP:CG	1:A:233:THR:HG22	2.34	0.47
2:B:1020:ASN:HD21	2:B:1062:ARG:HE	1.62	0.47
2:B:1109:HIS:HD2	2:B:1199:THR:OG1	1.97	0.47
4:D:3010:THR:O	4:D:3010:THR:CG2	2.61	0.47
1:A:9:ASN:O	1:A:10:ALA:CB	2.63	0.47
1:A:121:PHE:CZ	1:A:238:MET:HE2	2.50	0.47
2:B:1189:TRP:O	2:B:1195:ASN:ND2	2.47	0.47
3:C:2057:ASN:N	3:C:2057:ASN:ND2	2.59	0.47
1:A:172:TRP:CG	1:A:179:PRO:HG3	2.50	0.47
1:A:274:LYS:HD2	3:C:2059:ALA:HB2	1.97	0.46

Continued on next page...

Continued from previous page...

Atom-1	Atom-2	Interatomic distance (Å)	Clash overlap (Å)
2:B:1103:ARG:HB2	2:B:1210:MET:HG2	1.96	0.46
3:C:2115:LYS:HG3	3:C:2217:CYS:SG	2.55	0.46
1:A:263:THR:HG23	1:A:265:ASN:N	2.30	0.46
3:C:2156:TRP:CD1	3:C:2164:CYS:HB2	2.50	0.46
3:C:2044:MET:HE2	3:C:2220:PHE:HD1	1.79	0.46
1:A:286:LYS:HD2	1:A:289:VAL:CB	2.45	0.46
2:B:1234:ASP:C	2:B:1236:SER:N	2.66	0.46
3:C:2231:ILE:HD13	3:C:2231:ILE:HA	1.76	0.46
1:A:81:THR:CG2	1:A:232:MET:O	2.62	0.46
1:A:154:PRO:CA	1:A:161:THR:HG21	2.46	0.46
1:A:263:THR:CG2	1:A:265:ASN:HB2	2.46	0.46
3:C:2177:ARG:HG2	3:C:2185:THR:HB	1.98	0.46
2:B:1020:ASN:HD21	2:B:1062:ARG:NH2	2.14	0.46
1:A:81:THR:HG22	1:A:232:MET:C	2.37	0.45
2:B:1142:ASN:HB2	2:B:1164:ASN:HB3	1.98	0.45
3:C:2201:PRO:HG2	3:C:2204:THR:HG21	1.99	0.45
1:A:154:PRO:HG3	1:A:161:THR:HG21	1.99	0.45
1:A:267:SER:O	1:A:269:THR:HG23	2.17	0.45
2:B:1232:SER:C	2:B:1234:ASP:H	2.19	0.45
1:A:188:ILE:HG21	1:A:188:ILE:HD13	1.62	0.45
3:C:2010:SER:O	3:C:2011:ASN:HB2	2.17	0.45
1:A:211:ASN:HD22	1:A:211:ASN:HA	1.53	0.45
3:C:2196:THR:O	3:C:2197:GLY:O	2.34	0.45
1:A:105:ARG:HG3	1:A:254:ARG:HB3	1.99	0.44
1:A:81:THR:CG2	1:A:232:MET:N	2.81	0.44
1:A:121:PHE:CZ	1:A:238:MET:CE	3.01	0.44
1:A:252:PRO:HD3	2:B:1184:ILE:CD1	2.37	0.44
1:A:260:ASN:CG	1:A:263:THR:HG22	2.29	0.44
4:D:3063:LYS:CD	4:D:3067:ALA:HB2	2.48	0.44
4:D:3068:LEU:O	4:D:3069:ASN:HB2	2.17	0.44
3:C:2129:LYS:CB	3:C:2196:THR:HG22	2.40	0.44
3:C:2044:MET:O	3:C:2048:GLU:HG3	2.18	0.43
1:A:193:SER:HB2	2:B:1207:ASN:ND2	2.33	0.43
2:B:1083:PRO:HD2	2:B:1217:HIS:HA	2.01	0.43
2:B:1193:ARG:HG3	2:B:1194:THR:CG2	2.42	0.43
3:C:2072:VAL:CG1	3:C:2198:ILE:HD11	2.49	0.43
1:A:92:SER:HA	1:A:219:ILE:O	2.17	0.43
1:A:187:SER:O	3:C:2031:THR:HG21	2.19	0.43
2:B:1248:MET:O	2:B:1249:CYS:HB2	2.18	0.43
1:A:93:TRP:O	1:A:218:GLN:CB	2.67	0.43
3:C:2146:LYS:HE2	3:C:2146:LYS:HB2	1.68	0.43

Continued on next page...

Continued from previous page...

Atom-1	Atom-2	Interatomic distance (Å)	Clash overlap (Å)
3:C:2160:LEU:HD21	4:D:3069:ASN:H	1.82	0.43
4:D:3067:ALA:O	4:D:3068:LEU:HD23	2.18	0.43
3:C:2074:SER:HA	3:C:2198:ILE:O	2.19	0.43
1:A:101:VAL:N	3:C:2238:GLN:CD	2.72	0.43
1:A:199:TRP:CZ3	1:A:208:TYR:HB2	2.54	0.42
2:B:1190:ILE:HA	2:B:1195:ASN:HD21	1.81	0.42
4:D:3010:THR:O	4:D:3010:THR:HG22	2.18	0.42
1:A:245:VAL:CG1	1:A:246:LYS:N	2.82	0.42
2:B:1184:ILE:H	2:B:1184:ILE:CD1	2.28	0.42
1:A:12:ALA:O	1:A:58:SER:HA	2.19	0.42
3:C:2201:PRO:HG2	3:C:2204:THR:CG2	2.50	0.42
1:A:91:ALA:HB3	1:A:221:VAL:HG13	2.01	0.42
1:A:204:GLN:NE2	2:B:1143:GLU:HG2	2.34	0.42
1:A:142:HIS:HE1	1:A:174:GLU:OE1	2.02	0.42
2:B:1259:THR:HG22	2:B:1260:ALA:N	2.35	0.42
2:B:1256:ARG:HD2	2:B:1257:LEU:O	2.18	0.42
3:C:2193:TRP:CD1	3:C:2193:TRP:N	2.87	0.42
1:A:67:PHE:CG	3:C:2043:LEU:HD11	2.55	0.41
1:A:186:ILE:HD11	3:C:2025:MET:CE	2.50	0.41
1:A:213:LEU:HA	1:A:213:LEU:HD23	1.61	0.41
2:B:1196:ASN:OD1	2:B:1196:ASN:C	2.59	0.41
3:C:2127:THR:HG22	3:C:2199:VAL:HB	2.02	0.41
4:D:3047:THR:CG2	4:D:3048:GLN:H	2.24	0.41
1:A:216:MET:HE1	5:A:1000:DOA:H101	2.01	0.41
2:B:1075:SER:HA	2:B:1076:PRO:HD3	1.89	0.41
2:B:1231:TYR:CE1	2:B:1237:THR:HG22	2.55	0.41
1:A:129:GLN:NE2	1:A:130:GLY:N	2.68	0.41
4:D:3014:GLU:OE2	4:D:3014:GLU:HA	2.20	0.41
1:A:101:VAL:O	1:A:102:GLN:C	2.59	0.41
2:B:1083:PRO:HD3	2:B:1218:ASN:H	1.86	0.41
2:B:1233:SER:O	2:B:1235:PHE:N	2.53	0.41
2:B:1038:TRP:CD1	2:B:1039:PRO:HD2	2.55	0.41
2:B:1256:ARG:HD3	2:B:1257:LEU:HD23	2.03	0.41
3:C:2161:GLN:NE2	4:D:3066:PRO:HB3	2.35	0.41
2:B:1155:PHE:HB3	2:B:1170:VAL:HG13	2.02	0.41
4:D:3003:ALA:HB2	4:D:3030:ILE:CG1	2.47	0.41
1:A:101:VAL:HG21	3:C:2231:ILE:CD1	2.50	0.41
2:B:1123:LEU:HB2	2:B:1189:TRP:CZ3	2.56	0.41
3:C:2018:ASP:OD1	4:D:3040:SER:HB2	2.20	0.41
1:A:219:ILE:CD1	1:A:238:MET:HE1	2.51	0.40
2:B:1246:ALA:HA	2:B:1247:PRO:HD3	1.95	0.40

Continued on next page...

Continued from previous page...

Atom-1	Atom-2	Interatomic distance (Å)	Clash overlap (Å)
4:D:3008:GLN:HG3	4:D:3026:HIS:HA	2.04	0.40
3:C:2105:ASN:HB3	3:C:2228:THR:HG23	2.02	0.40
1:A:178:PRO:HA	1:A:179:PRO:HD3	1.83	0.40
2:B:1110:VAL:HG22	2:B:1243:VAL:HG22	2.03	0.40
3:C:2081:GLN:HB2	3:C:2193:TRP:CZ3	2.56	0.40
3:C:2115:LYS:HB2	3:C:2115:LYS:HE3	1.75	0.40
1:A:101:VAL:HG23	1:A:258:TYR:CE2	2.56	0.40
4:D:3003:ALA:CB	4:D:3030:ILE:HG12	2.49	0.40
1:A:129:GLN:HE21	1:A:130:GLY:N	2.20	0.40
3:C:2126:ALA:HA	3:C:2200:VAL:HG23	2.03	0.40

There are no symmetry-related clashes.

3.3 Torsion angles [i](#)

3.3.1 Protein backbone [i](#)

In the following table, the Percentiles column shows the percent Ramachandran outliers of the chain as a percentile score with respect to all X-ray entries followed by that with respect to entries of similar resolution.

The Analysed column shows the number of residues for which the backbone conformation was analysed, and the total number of residues.

Mol	Chain	Analysed	Favoured	Allowed	Outliers	Percentiles	
1	A	288/292 (99%)	259 (90%)	20 (7%)	9 (3%)	4	16
2	B	251/262 (96%)	220 (88%)	23 (9%)	8 (3%)	4	16
3	C	236/238 (99%)	224 (95%)	10 (4%)	2 (1%)	19	51
4	D	57/68 (84%)	44 (77%)	9 (16%)	4 (7%)	1	3
All	All	832/860 (97%)	747 (90%)	62 (8%)	23 (3%)	5	19

All (23) Ramachandran outliers are listed below:

Mol	Chain	Res	Type
1	A	8	GLU
1	A	9	ASN
1	A	214	ASN
1	A	228	SER
2	B	1152	ALA

Continued on next page...

Continued from previous page...

Mol	Chain	Res	Type
2	B	1234	ASP
2	B	1235	PHE
2	B	1261	LEU
3	C	2197	GLY
4	D	3012	ALA
4	D	3055	GLU
4	D	3064	SER
1	A	227	SER
2	B	1034	GLY
2	B	1085	ALA
3	C	2236	LEU
4	D	3063	LYS
1	A	10	ALA
2	B	1150	GLU
1	A	86	GLN
2	B	1082	PHE
1	A	4	VAL
1	A	287	PRO

3.3.2 Protein sidechains [i](#)

In the following table, the Percentiles column shows the percent sidechain outliers of the chain as a percentile score with respect to all X-ray entries followed by that with respect to entries of similar resolution.

The Analysed column shows the number of residues for which the sidechain conformation was analysed, and the total number of residues.

Mol	Chain	Analysed	Rotameric	Outliers	Percentiles	
1	A	259/262 (99%)	236 (91%)	23 (9%)	9	29
2	B	217/225 (96%)	199 (92%)	18 (8%)	11	32
3	C	204/204 (100%)	176 (86%)	28 (14%)	3	11
4	D	51/56 (91%)	45 (88%)	6 (12%)	5	16
All	All	731/747 (98%)	656 (90%)	75 (10%)	7	22

All (75) residues with a non-rotameric sidechain are listed below:

Mol	Chain	Res	Type
1	A	26	GLN
1	A	28	VAL
1	A	34	VAL

Continued on next page...

Continued from previous page...

Mol	Chain	Res	Type
1	A	69	SER
1	A	81	THR
1	A	94	THR
1	A	96	SER
1	A	103	MET
1	A	131	THR
1	A	161	THR
1	A	164	THR
1	A	181	MET
1	A	186	ILE
1	A	188	ILE
1	A	207	VAL
1	A	212	THR
1	A	214	ASN
1	A	221	VAL
1	A	233	THR
1	A	249	VAL
1	A	251	ARG
1	A	264	VAL
1	A	288	ASP
2	B	1015	SER
2	B	1020	ASN
2	B	1025	THR
2	B	1030	ASN
2	B	1048	THR
2	B	1060	THR
2	B	1125	VAL
2	B	1158	THR
2	B	1163	THR
2	B	1170	VAL
2	B	1171	THR
2	B	1184	ILE
2	B	1229	LEU
2	B	1233	SER
2	B	1235	PHE
2	B	1245	VAL
2	B	1256	ARG
2	B	1257	LEU
3	C	2005	ILE
3	C	2021	SER
3	C	2030	VAL
3	C	2031	THR

Continued on next page...

Continued from previous page...

Mol	Chain	Res	Type
3	C	2035	ASN
3	C	2056	ASN
3	C	2057	ASN
3	C	2058	VAL
3	C	2072	VAL
3	C	2078	GLN
3	C	2096	LYS
3	C	2098	THR
3	C	2099	LEU
3	C	2103	ILE
3	C	2127	THR
3	C	2149	MET
3	C	2154	ILE
3	C	2178	LEU
3	C	2180	GLN
3	C	2181	GLN
3	C	2189	ASN
3	C	2200	VAL
3	C	2208	CYS
3	C	2224	LEU
3	C	2225	LEU
3	C	2228	THR
3	C	2231	ILE
3	C	2238	GLN
4	D	3010	THR
4	D	3014	GLU
4	D	3025	ILE
4	D	3028	THR
4	D	3066	PRO
4	D	3069	ASN

Sometimes sidechains can be flipped to improve hydrogen bonding and reduce clashes. All (26) such sidechains are listed below:

Mol	Chain	Res	Type
1	A	80	HIS
1	A	83	ASN
1	A	129	GLN
1	A	142	HIS
1	A	201	HIS
1	A	204	GLN
1	A	211	ASN
1	A	214	ASN

Continued on next page...

Continued from previous page...

Mol	Chain	Res	Type
2	B	1020	ASN
2	B	1030	ASN
2	B	1052	GLN
2	B	1109	HIS
2	B	1119	GLN
2	B	1172	ASN
2	B	1195	ASN
3	C	2012	GLN
3	C	2035	ASN
3	C	2042	ASN
3	C	2056	ASN
3	C	2057	ASN
3	C	2088	GLN
3	C	2140	ASN
3	C	2189	ASN
3	C	2238	GLN
4	D	3044	GLN
4	D	3048	GLN

3.3.3 RNA [i](#)

There are no RNA molecules in this entry.

3.4 Non-standard residues in protein, DNA, RNA chains [i](#)

Mogul was not executed - this section is therefore empty.

3.5 Carbohydrates [i](#)

Mogul was not executed - this section is therefore empty.

3.6 Ligand geometry [i](#)

Mogul was not executed - this section is therefore empty.

3.7 Other polymers [i](#)

Mogul was not executed - this section is therefore empty.

3.8 Polymer linkage issues

There are no chain breaks in this entry.

4 Fit of model and data

4.1 Protein, DNA and RNA chains

EDS was not executed - this section is therefore empty.

4.2 Non-standard residues in protein, DNA, RNA chains

EDS was not executed - this section is therefore empty.

4.3 Carbohydrates

EDS was not executed - this section is therefore empty.

4.4 Ligands

EDS was not executed - this section is therefore empty.

4.5 Other polymers

EDS was not executed - this section is therefore empty.