



# Full wwPDB X-ray Structure Validation Report ⓘ

Oct 23, 2021 – 01:23 PM EDT

PDB ID : 1FSA  
Title : THE T-STATE STRUCTURE OF LYS 42 TO ALA MUTANT OF THE PIG  
KIDNEY FRUCTOSE 1,6-BISPHOSPHATASE EXPRESSED IN E. COLI  
Authors : Lu, G.; Stec, B.; Giroux, E.; Kantrowitz, E.R.  
Deposited on : 1996-08-24  
Resolution : 2.30 Å(reported)

This is a Full wwPDB X-ray Structure Validation Report for a publicly released PDB entry.

We welcome your comments at [validation@mail.wwpdb.org](mailto:validation@mail.wwpdb.org)

A user guide is available at

<https://www.wwpdb.org/validation/2017/XrayValidationReportHelp>

with specific help available everywhere you see the ⓘ symbol.

---

The following versions of software and data (see [references ⓘ](#)) were used in the production of this report:

MolProbity : 4.02b-467  
Mogul : 1.8.5 (274361), CSD as541be (2020)  
Xtrriage (Phenix) : **NOT EXECUTED**  
EDS : **NOT EXECUTED**  
buster-report : 1.1.7 (2018)  
Percentile statistics : 20191225.v01 (using entries in the PDB archive December 25th 2019)  
Ideal geometry (proteins) : Engh & Huber (2001)  
Ideal geometry (DNA, RNA) : Parkinson et al. (1996)  
Validation Pipeline (wwPDB-VP) : 2.23.2

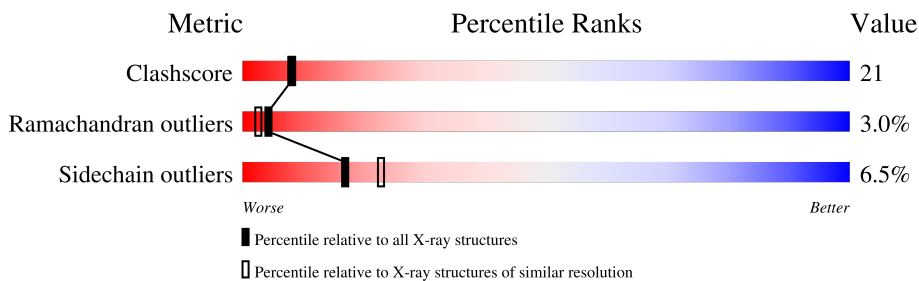
# 1 Overall quality at a glance

The following experimental techniques were used to determine the structure:

*X-RAY DIFFRACTION*

The reported resolution of this entry is 2.30 Å.

Percentile scores (ranging between 0-100) for global validation metrics of the entry are shown in the following graphic. The table shows the number of entries on which the scores are based.



Metric	Whole archive (#Entries)	Similar resolution (#Entries, resolution range(Å))
Clashscore	141614	5643 (2.30-2.30)
Ramachandran outliers	138981	5575 (2.30-2.30)
Sidechain outliers	138945	5575 (2.30-2.30)

The table below summarises the geometric issues observed across the polymeric chains and their fit to the electron density. The red, orange, yellow and green segments of the lower bar indicate the fraction of residues that contain outliers for  $\geq 3$ , 2, 1 and 0 types of geometric quality criteria respectively. A grey segment represents the fraction of residues that are not modelled. The numeric value for each fraction is indicated below the corresponding segment, with a dot representing fractions  $\leq 5\%$ .

Note EDS was not executed.

Mol	Chain	Length	Quality of chain
1	A	337	 58% 39% ..
1	B	337	 55% 41% ..

## 2 Entry composition

There are 5 unique types of molecules in this entry. The entry contains 5347 atoms, of which 0 are hydrogens and 0 are deuteriums.

In the tables below, the ZeroOcc column contains the number of atoms modelled with zero occupancy, the AltConf column contains the number of residues with at least one atom in alternate conformation and the Trace column contains the number of residues modelled with at most 2 atoms.

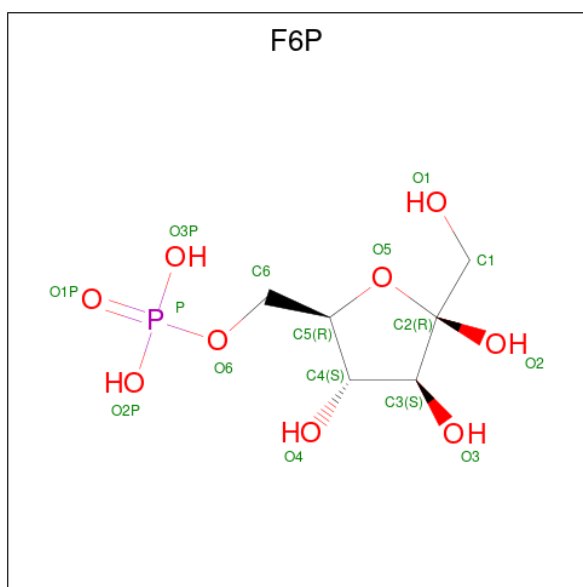
- Molecule 1 is a protein called FRUCTOSE 1,6-BISPHOSPHATASE.

Mol	Chain	Residues	Atoms					ZeroOcc	AltConf	Trace
			Total	C	N	O	S			
1	A	337	2568	1630	433	490	15	0	0	0
1	B	337	2568	1630	433	490	15	0	0	0

There are 8 discrepancies between the modelled and reference sequences:

Chain	Residue	Modelled	Actual	Comment	Reference
A	20	GLN	GLU	conflict	UNP P00636
A	42	ALA	LYS	engineered mutation	UNP P00636
A	96	THR	SER	conflict	UNP P00636
A	199	ASN	ASP	conflict	UNP P00636
B	20	GLN	GLU	conflict	UNP P00636
B	42	ALA	LYS	engineered mutation	UNP P00636
B	96	THR	SER	conflict	UNP P00636
B	199	ASN	ASP	conflict	UNP P00636

- Molecule 2 is 6-O-phosphono-beta-D-fructofuranose (three-letter code: F6P) (formula: C<sub>6</sub>H<sub>13</sub>O<sub>9</sub>P).

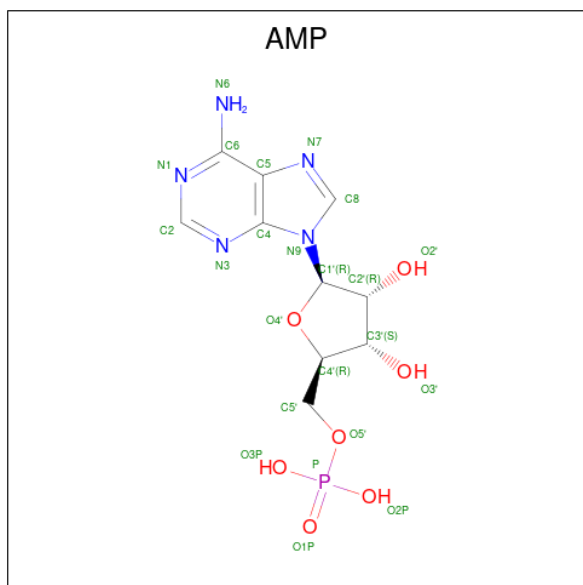


Mol	Chain	Residues	Atoms				ZeroOcc	AltConf
2	A	1	Total	C	O	P	0	0
			16	6	9	1		
2	B	1	Total	C	O	P	0	0
			16	6	9	1		

- Molecule 3 is MANGANESE (II) ION (three-letter code: MN) (formula: Mn).

Mol	Chain	Residues	Atoms		ZeroOcc	AltConf
3	A	1	Total	Mn	0	0
			1	1		
3	B	1	Total	Mn	0	0
			1	1		

- Molecule 4 is ADENOSINE MONOPHOSPHATE (three-letter code: AMP) (formula: C<sub>10</sub>H<sub>14</sub>N<sub>5</sub>O<sub>7</sub>P).



Mol	Chain	Residues	Atoms					ZeroOcc	AltConf
			Total	C	N	O	P		
4	A	1	23	10	5	7	1	0	0
4	B	1	23	10	5	7	1	0	0

- Molecule 5 is water.

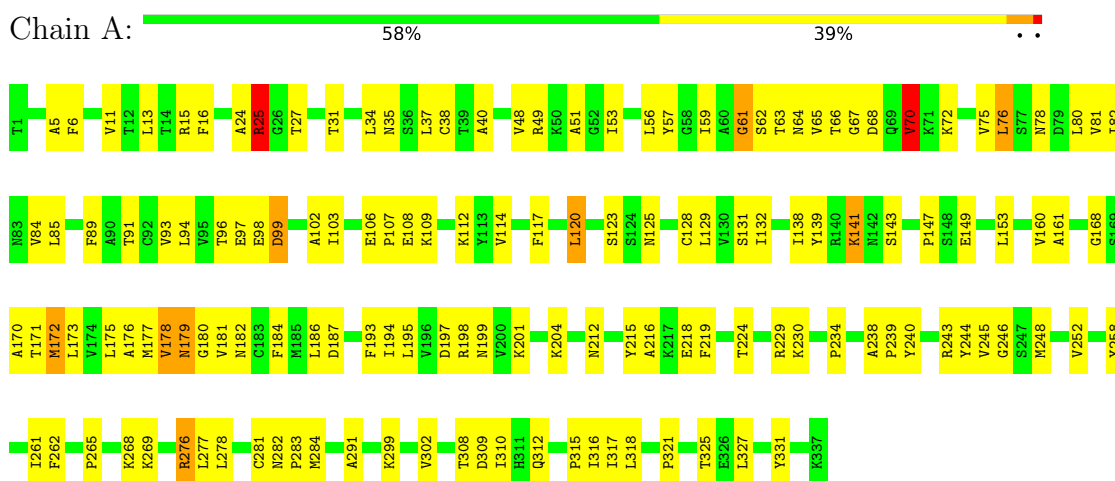
Mol	Chain	Residues	Atoms		ZeroOcc	AltConf
			Total	O		
5	A	71	71	71	0	0
5	B	60	60	60	0	0

### 3 Residue-property plots [i](#)

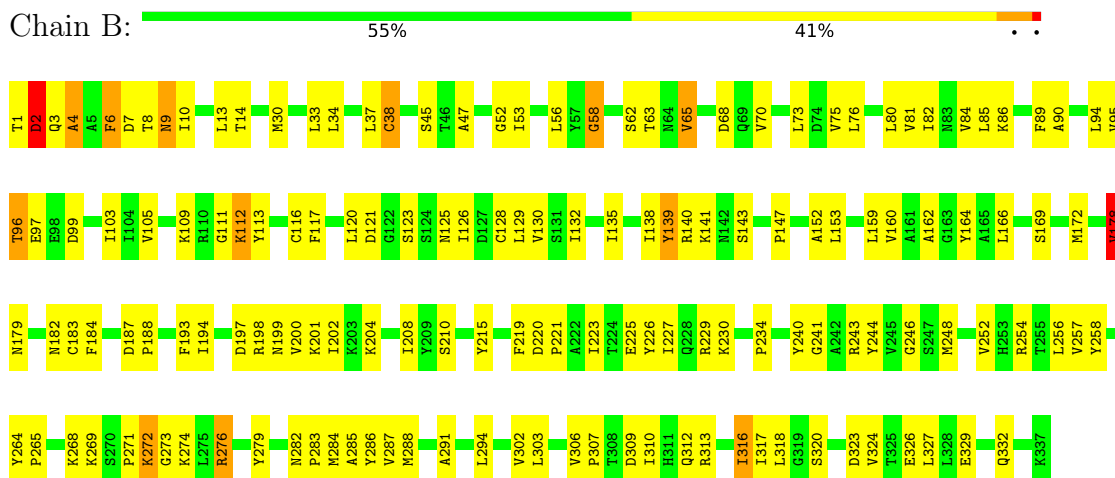
These plots are drawn for all protein, RNA, DNA and oligosaccharide chains in the entry. The first graphic for a chain summarises the proportions of the various outlier classes displayed in the second graphic. The second graphic shows the sequence view annotated by issues in geometry. Residues are color-coded according to the number of geometric quality criteria for which they contain at least one outlier: green = 0, yellow = 1, orange = 2 and red = 3 or more. Stretches of 2 or more consecutive residues without any outlier are shown as a green connector. Residues present in the sample, but not in the model, are shown in grey.

Note EDS was not executed.

- Molecule 1: FRUCTOSE 1,6-BISPHOSPHATASE



- Molecule 1: FRUCTOSE 1,6-BISPHOSPHATASE



## 4 Data and refinement statistics

Xtrriage (Phenix) and EDS were not executed - this section is therefore incomplete.

Property	Value	Source
Space group	P 21 21 2	Depositor
Cell constants a, b, c, $\alpha$ , $\beta$ , $\gamma$	61.05Å 166.72Å 79.98Å 90.00° 90.00° 90.00°	Depositor
Resolution (Å)	10.00 – 2.30	Depositor
% Data completeness (in resolution range)	65.0 (10.00-2.30)	Depositor
$R_{merge}$	0.09	Depositor
$R_{sym}$	(Not available)	Depositor
Refinement program	X-PLOR 3.1	Depositor
R, $R_{free}$	0.184 , 0.232	Depositor
Estimated twinning fraction	No twinning to report.	Xtrriage
Total number of atoms	5347	wwPDB-VP
Average B, all atoms (Å <sup>2</sup> )	24.0	wwPDB-VP

## 5 Model quality [i](#)

### 5.1 Standard geometry [i](#)

Bond lengths and bond angles in the following residue types are not validated in this section: MN, F6P, AMP

The Z score for a bond length (or angle) is the number of standard deviations the observed value is removed from the expected value. A bond length (or angle) with  $|Z| > 5$  is considered an outlier worth inspection. RMSZ is the root-mean-square of all Z scores of the bond lengths (or angles).

Mol	Chain	Bond lengths		Bond angles	
		RMSZ	# Z  >5	RMSZ	# Z  >5
1	A	0.59	0/2611	0.80	1/3534 (0.0%)
1	B	0.61	0/2611	0.84	4/3534 (0.1%)
All	All	0.60	0/5222	0.82	5/7068 (0.1%)

Chiral center outliers are detected by calculating the chiral volume of a chiral center and verifying if the center is modelled as a planar moiety or with the opposite hand. A planarity outlier is detected by checking planarity of atoms in a peptide group, atoms in a mainchain group or atoms of a sidechain that are expected to be planar.

Mol	Chain	#Chirality outliers	#Planarity outliers
1	B	0	1

There are no bond length outliers.

All (5) bond angle outliers are listed below:

Mol	Chain	Res	Type	Atoms	Z	Observed(°)	Ideal(°)
1	B	2	ASP	O-C-N	-5.79	113.44	122.70
1	B	9	ASN	O-C-N	-5.52	113.86	122.70
1	B	187	ASP	N-CA-C	-5.28	96.75	111.00
1	B	58	GLY	N-CA-C	5.14	125.94	113.10
1	A	278	LEU	CA-CB-CG	5.11	127.04	115.30

There are no chirality outliers.

All (1) planarity outliers are listed below:

Mol	Chain	Res	Type	Group
1	B	139	TYR	Sidechain



## 5.2 Too-close contacts

In the following table, the Non-H and H(model) columns list the number of non-hydrogen atoms and hydrogen atoms in the chain respectively. The H(added) column lists the number of hydrogen atoms added and optimized by MolProbity. The Clashes column lists the number of clashes within the asymmetric unit, whereas Symm-Clashes lists symmetry-related clashes.

Mol	Chain	Non-H	H(model)	H(added)	Clashes	Symm-Clashes
1	A	2568	0	2620	114	0
1	B	2568	0	2620	130	1
2	A	16	0	10	0	0
2	B	16	0	11	0	0
3	A	1	0	0	0	0
3	B	1	0	0	0	0
4	A	23	0	12	1	0
4	B	23	0	12	1	0
5	A	71	0	0	5	0
5	B	60	0	0	4	0
All	All	5347	0	5285	225	1

The all-atom clashscore is defined as the number of clashes found per 1000 atoms (including hydrogen atoms). The all-atom clashscore for this structure is 21.

All (225) close contacts within the same asymmetric unit are listed below, sorted by their clash magnitude.

Atom-1	Atom-2	Interatomic distance (Å)	Clash overlap (Å)
1:B:13:LEU:HD23	1:B:38:CYS:SG	1.75	1.26
1:B:1:THR:HG22	5:B:361:HOH:O	1.58	1.02
1:A:129:LEU:HD12	1:B:166:LEU:HD23	1.51	0.90
1:B:58:GLY:HA2	1:B:62:SER:N	1.88	0.88
1:A:78:ASN:OD1	1:A:96:THR:HG21	1.76	0.86
1:A:215:TYR:HE1	1:A:269:LYS:HD3	1.39	0.85
1:B:2:ASP:OD1	1:B:3:GLN:HG3	1.77	0.84
1:A:128:CYS:SG	1:B:258:TYR:CZ	2.71	0.82
1:A:112:LYS:O	1:A:141:LYS:HB2	1.80	0.81
1:B:13:LEU:CD2	1:B:38:CYS:SG	2.65	0.79
1:B:125:ASN:O	1:B:130:VAL:HG12	1.83	0.79
1:A:96:THR:HG22	1:A:98:GLU:H	1.48	0.78
1:B:141:LYS:HZ3	1:B:143:SER:HB2	1.50	0.77
1:A:215:TYR:CE1	1:A:269:LYS:HD3	2.20	0.76
1:B:230:LYS:HE2	1:B:230:LYS:HA	1.65	0.76
1:B:13:LEU:HD23	1:B:38:CYS:HG	1.52	0.75
1:A:316:ILE:HD11	1:A:318:LEU:HD23	1.69	0.74

*Continued on next page...*

*Continued from previous page...*

Atom-1	Atom-2	Interatomic distance (Å)	Clash overlap (Å)
1:A:277:LEU:HA	1:A:281:CYS:HB2	1.68	0.74
1:B:56:LEU:HA	1:B:65:VAL:HB	1.69	0.73
1:B:302:VAL:HG21	1:B:316:ILE:HD12	1.69	0.72
1:A:109:LYS:H	1:A:109:LYS:HZ2	1.35	0.72
1:A:308:THR:HG23	5:A:378:HOH:O	1.89	0.71
1:B:58:GLY:HA2	1:B:62:SER:H	1.54	0.70
1:B:10:ILE:HD11	1:B:194:ILE:HG12	1.74	0.70
1:B:272:LYS:NZ	1:B:272:LYS:HB3	2.10	0.67
1:B:126:ILE:HG12	1:B:132:ILE:HD13	1.77	0.66
1:A:114:VAL:HB	1:A:139:TYR:HB2	1.76	0.66
1:B:215:TYR:HB2	1:B:219:PHE:CE1	2.30	0.66
1:A:96:THR:HG22	1:A:98:GLU:N	2.11	0.66
1:B:317:ILE:HG21	1:B:327:LEU:HD23	1.77	0.66
1:A:59:ILE:HG13	1:B:10:ILE:HG21	1.77	0.65
1:A:102:ALA:HB2	1:A:149:GLU:HG3	1.78	0.65
1:A:258:TYR:HA	5:A:407:HOH:O	1.96	0.64
1:A:94:LEU:HD12	1:A:103:ILE:HG21	1.79	0.63
1:B:276:ARG:HG3	1:B:279:TYR:CE1	2.34	0.63
1:B:320:SER:O	1:B:324:VAL:HG23	1.99	0.62
1:B:47:ALA:HB1	1:B:73:LEU:HD21	1.80	0.62
1:B:230:LYS:HD3	1:B:240:TYR:CD2	2.36	0.61
1:A:102:ALA:CB	1:A:149:GLU:HG3	2.31	0.61
1:B:141:LYS:NZ	1:B:143:SER:HB2	2.14	0.60
1:B:89:PHE:CD1	1:B:109:LYS:HA	2.37	0.60
1:A:184:PHE:CE1	1:A:195:LEU:HD13	2.36	0.60
1:B:220:ASP:HB2	1:B:221:PRO:HD2	1.82	0.60
1:A:31:THR:HG22	1:A:35:ASN:ND2	2.18	0.59
1:A:201:LYS:HA	1:A:291:ALA:O	2.03	0.58
1:B:248:MET:CE	1:B:284:MET:HG3	2.33	0.58
1:B:302:VAL:HG21	1:B:316:ILE:CD1	2.34	0.57
1:B:14:THR:HB	5:B:359:HOH:O	2.04	0.57
1:A:70:VAL:HG21	5:A:388:HOH:O	2.03	0.57
1:A:128:CYS:SG	1:B:258:TYR:CE2	2.95	0.57
1:B:10:ILE:HG23	1:B:10:ILE:O	2.04	0.57
1:B:80:LEU:O	1:B:84:VAL:HG23	2.04	0.57
1:B:95:VAL:HG21	1:B:152:ALA:CB	2.34	0.57
1:B:1:THR:HG22	1:B:2:ASP:H	1.70	0.56
1:B:140:ARG:NH2	4:B:340:AMP:O3'	2.38	0.56
1:B:193:PHE:HB2	5:B:358:HOH:O	2.04	0.56
1:B:96:THR:HB	1:B:117:PHE:CE1	2.41	0.56
1:B:2:ASP:N	5:B:361:HOH:O	2.38	0.56

*Continued on next page...*

*Continued from previous page...*

Atom-1	Atom-2	Interatomic distance (Å)	Clash overlap (Å)
1:A:49:ARG:HD3	1:B:169:SER:O	2.06	0.56
1:A:258:TYR:CD2	1:B:128:CYS:SG	2.99	0.56
1:A:72:LYS:HB3	1:A:75:VAL:HB	1.87	0.55
1:A:120:LEU:HD11	1:A:132:ILE:HD12	1.89	0.55
1:A:234:PRO:HD2	5:A:387:HOH:O	2.06	0.55
1:A:109:LYS:HZ2	1:A:109:LYS:N	2.04	0.55
1:A:218:GLU:HG2	1:A:268:LYS:HB3	1.88	0.55
1:B:97:GLU:HG2	1:B:279:TYR:CE1	2.42	0.55
1:B:274:LYS:HA	1:B:313:ARG:HH11	1.71	0.55
1:A:170:ALA:HB3	1:B:129:LEU:HD22	1.89	0.55
1:A:49:ARG:NH1	1:B:169:SER:HA	2.22	0.55
1:A:243:ARG:NE	1:B:246:GLY:HA3	2.22	0.54
1:A:96:THR:HB	1:A:99:ASP:HB2	1.90	0.54
1:B:30:MET:O	1:B:33:LEU:N	2.40	0.54
1:A:317:ILE:HD13	1:A:327:LEU:CD2	2.38	0.54
1:A:31:THR:HG22	1:A:35:ASN:HD21	1.73	0.54
1:A:258:TYR:CE2	1:B:128:CYS:SG	3.02	0.53
1:A:37:LEU:O	1:A:40:ALA:HB3	2.09	0.53
1:A:316:ILE:CD1	1:A:318:LEU:HD23	2.39	0.53
1:A:229:ARG:NH1	1:A:234:PRO:HG2	2.23	0.53
1:A:276:ARG:H	1:A:276:ARG:HE	1.57	0.52
1:B:282:ASN:HD22	1:B:303:LEU:HD23	1.74	0.52
1:A:106:GLU:HB2	1:A:109:LYS:HZ1	1.74	0.52
1:B:282:ASN:ND2	1:B:303:LEU:HD23	2.25	0.52
5:A:372:HOH:O	1:B:52:GLY:HA2	2.09	0.52
1:B:248:MET:HE1	1:B:284:MET:HG3	1.92	0.52
1:A:176:ALA:HA	1:A:180:GLY:O	2.10	0.51
1:A:261:ILE:HG12	1:A:262:PHE:N	2.26	0.51
1:A:138:ILE:HD12	1:A:161:ALA:HB3	1.91	0.51
1:A:178:VAL:HG13	1:A:179:ASN:N	2.26	0.51
1:A:182:ASN:HD22	1:A:198:ARG:HA	1.75	0.51
1:B:6:PHE:HE1	1:B:8:THR:HG1	1.58	0.51
1:B:230:LYS:HE2	1:B:230:LYS:CA	2.36	0.51
1:B:86:LYS:HG2	1:B:105:VAL:HG22	1.91	0.51
1:B:230:LYS:HB3	1:B:240:TYR:HB2	1.92	0.51
1:B:208:ILE:HA	1:B:241:GLY:O	2.10	0.50
1:B:248:MET:O	1:B:252:VAL:HG23	2.11	0.50
1:A:27:THR:HG23	4:A:340:AMP:O2P	2.11	0.50
1:A:51:ALA:HA	1:B:188:PRO:HD2	1.92	0.50
1:B:75:VAL:HG23	1:B:76:LEU:N	2.27	0.50
1:B:316:ILE:CG1	1:B:318:LEU:HD23	2.41	0.50

*Continued on next page...*

*Continued from previous page...*

Atom-1	Atom-2	Interatomic distance (Å)	Clash overlap (Å)
1:A:125:ASN:ND2	1:A:246:GLY:O	2.45	0.50
1:B:95:VAL:HG13	1:B:310:ILE:HD12	1.93	0.50
1:B:2:ASP:OD1	1:B:3:GLN:CG	2.56	0.50
1:A:53:ILE:HD12	1:A:56:LEU:HD13	1.94	0.49
1:B:257:VAL:HG12	1:B:258:TYR:CD1	2.47	0.49
1:A:94:LEU:HD12	1:A:103:ILE:CG2	2.41	0.49
1:A:184:PHE:HB3	1:A:193:PHE:HB3	1.93	0.49
1:A:76:LEU:CD1	1:A:80:LEU:HD12	2.43	0.49
1:B:56:LEU:HA	1:B:65:VAL:CB	2.40	0.49
1:A:317:ILE:HD13	1:A:327:LEU:HD21	1.95	0.49
1:A:218:GLU:HG2	1:A:268:LYS:HE3	1.94	0.48
1:B:204:LYS:O	1:B:320:SER:HB3	2.13	0.48
1:B:138:ILE:O	1:B:160:VAL:HG12	2.13	0.48
1:B:248:MET:HE2	1:B:284:MET:HG3	1.96	0.48
1:A:59:ILE:HA	1:B:10:ILE:HG21	1.96	0.48
1:B:82:ILE:HG12	1:B:94:LEU:HD12	1.94	0.48
1:B:121:ASP:O	1:B:132:ILE:HB	2.14	0.48
1:A:11:VAL:HG22	1:A:15:ARG:NH1	2.29	0.48
1:A:187:ASP:HB2	1:B:53:ILE:CG2	2.44	0.48
1:A:248:MET:O	1:A:252:VAL:HG23	2.14	0.47
1:B:223:ILE:O	1:B:227:ILE:HG13	2.15	0.47
1:B:283:PRO:O	1:B:287:VAL:HG23	2.14	0.47
1:A:218:GLU:HB3	1:A:268:LYS:H	1.79	0.47
1:A:276:ARG:HE	1:A:276:ARG:N	2.12	0.47
1:B:159:LEU:HB2	1:B:286:TYR:CD2	2.49	0.47
1:B:82:ILE:HD11	1:B:96:THR:HG21	1.96	0.47
1:B:272:LYS:HB3	1:B:272:LYS:HZ3	1.79	0.47
1:A:76:LEU:HD12	1:A:80:LEU:HD12	1.97	0.47
1:A:93:VAL:HG23	1:A:147:PRO:HB2	1.97	0.47
1:B:268:LYS:HD2	1:B:271:PRO:HB3	1.97	0.47
1:A:182:ASN:ND2	1:A:198:ARG:HA	2.30	0.47
1:B:90:ALA:C	1:B:111:GLY:HA3	2.35	0.47
1:A:129:LEU:CD1	1:B:172:MET:HB2	2.45	0.46
1:A:230:LYS:HD3	1:A:240:TYR:CD2	2.51	0.46
1:A:198:ARG:HB2	1:A:198:ARG:CZ	2.45	0.46
1:B:81:VAL:O	1:B:85:LEU:HB2	2.15	0.46
1:A:128:CYS:SG	1:B:254:ARG:HG3	2.55	0.46
1:B:225:GLU:OE2	1:B:229:ARG:NH2	2.48	0.46
1:B:302:VAL:CG2	1:B:316:ILE:HD12	2.41	0.46
1:B:252:VAL:HG11	1:B:284:MET:SD	2.56	0.46
1:B:82:ILE:HG13	1:B:117:PHE:HZ	1.79	0.46

*Continued on next page...*

*Continued from previous page...*

Atom-1	Atom-2	Interatomic distance (Å)	Clash overlap (Å)
1:B:112:LYS:HE2	1:B:113:TYR:CE2	2.51	0.46
1:A:317:ILE:HG21	1:A:327:LEU:HD23	1.98	0.46
1:A:13:LEU:O	1:A:16:PHE:HB3	2.15	0.45
1:B:329:GLU:O	1:B:332:GLN:HB2	2.15	0.45
1:A:176:ALA:HB2	1:A:181:VAL:HG22	1.99	0.45
1:A:187:ASP:HB2	1:B:53:ILE:HG22	1.98	0.45
1:A:204:LYS:HA	1:A:321:PRO:HD2	1.99	0.45
1:B:34:LEU:HA	1:B:34:LEU:HD23	1.69	0.45
1:B:116:CYS:HG	1:B:139:TYR:HE2	1.65	0.45
1:B:215:TYR:HB2	1:B:219:PHE:CZ	2.52	0.45
1:A:61:GLY:O	1:A:63:THR:N	2.50	0.45
1:A:172:MET:HB2	1:B:129:LEU:HD11	1.99	0.45
1:A:49:ARG:NH1	1:A:168:GLY:O	2.50	0.44
1:A:96:THR:HG22	1:A:97:GLU:N	2.30	0.44
1:B:159:LEU:HD13	1:B:162:ALA:HB2	1.99	0.44
1:B:276:ARG:HD3	1:B:276:ARG:N	2.31	0.44
1:B:309:ASP:HB3	1:B:312:GLN:HB3	1.99	0.44
1:A:282:ASN:ND2	1:A:302:VAL:HG12	2.33	0.44
1:B:202:ILE:HD12	1:B:256:LEU:HA	1.99	0.44
1:B:95:VAL:HG21	1:B:152:ALA:HB2	1.99	0.44
1:A:34:LEU:HD22	1:A:175:LEU:HD21	1.99	0.44
1:A:212:ASN:ND2	1:A:215:TYR:HE2	2.16	0.44
1:B:7:ASP:CG	1:B:9:ASN:HD21	2.21	0.44
1:A:48:VAL:HG13	1:A:132:ILE:HD11	2.00	0.44
1:B:182:ASN:OD1	1:B:198:ARG:HA	2.17	0.44
1:B:288:MET:HG3	1:B:318:LEU:HB2	1.99	0.44
1:B:294:LEU:O	1:B:318:LEU:HA	2.18	0.44
1:A:94:LEU:HB2	1:A:103:ILE:HB	2.00	0.43
1:B:90:ALA:O	1:B:113:TYR:HB2	2.18	0.43
1:B:95:VAL:HG11	1:B:310:ILE:HB	2.01	0.43
1:B:159:LEU:HD12	1:B:286:TYR:CD2	2.54	0.43
1:A:81:VAL:O	1:A:85:LEU:HG	2.19	0.43
1:A:172:MET:HG3	1:A:173:LEU:N	2.33	0.43
1:A:177:MET:O	1:A:179:ASN:N	2.51	0.43
1:B:7:ASP:OD1	1:B:9:ASN:ND2	2.51	0.43
1:A:218:GLU:CG	1:A:268:LYS:HB3	2.48	0.43
1:A:24:ALA:O	1:A:25:ARG:C	2.56	0.43
1:A:40:ALA:HB2	1:A:84:VAL:HG21	2.00	0.43
1:B:183:CYS:SG	1:B:200:VAL:HG21	2.58	0.43
1:B:95:VAL:HG21	1:B:152:ALA:HB1	2.01	0.43
1:B:178:VAL:HG13	1:B:179:ASN:H	1.83	0.43

*Continued on next page...*

*Continued from previous page...*

Atom-1	Atom-2	Interatomic distance (Å)	Clash overlap (Å)
1:A:63:THR:HG22	1:A:64:ASN:HD22	1.83	0.43
1:A:11:VAL:HG22	1:A:15:ARG:HH12	1.83	0.42
1:A:106:GLU:HB2	1:A:109:LYS:NZ	2.33	0.42
1:B:139:TYR:CE1	1:B:159:LEU:HD23	2.54	0.42
1:A:107:PRO:HG2	1:A:108:GLU:OE2	2.20	0.42
1:A:171:THR:HB	1:A:186:LEU:HB3	2.00	0.42
1:A:89:PHE:CD1	1:A:109:LYS:HA	2.54	0.42
1:A:53:ILE:HD11	1:A:57:TYR:HE1	1.84	0.42
1:B:94:LEU:HB2	1:B:103:ILE:HB	2.01	0.42
1:A:66:THR:HB	1:A:67:GLY:H	1.69	0.42
1:A:109:LYS:NZ	1:A:109:LYS:HB2	2.35	0.42
1:B:306:VAL:HA	1:B:307:PRO:HD2	1.72	0.42
1:B:178:VAL:HG22	1:B:179:ASN:N	2.35	0.42
1:B:264:TYR:N	1:B:265:PRO:HD3	2.34	0.42
1:B:285:ALA:HB3	1:B:303:LEU:HD21	2.00	0.42
1:B:184:PHE:HB3	1:B:193:PHE:HB3	2.02	0.42
1:B:201:LYS:HA	1:B:291:ALA:O	2.20	0.42
1:A:82:ILE:HG13	1:A:117:PHE:HZ	1.84	0.42
1:A:153:LEU:HD21	1:A:310:ILE:HG23	2.02	0.41
1:A:182:ASN:ND2	1:A:198:ARG:HB2	2.34	0.41
1:B:323:ASP:O	1:B:326:GLU:HB3	2.20	0.41
1:B:123:SER:O	1:B:126:ILE:HG13	2.21	0.41
1:B:135:ILE:HG23	1:B:164:TYR:HB3	2.01	0.41
1:B:226:TYR:CZ	1:B:230:LYS:HD2	2.55	0.41
1:B:226:TYR:HE1	1:B:326:GLU:HG2	1.84	0.41
1:B:159:LEU:HB2	1:B:286:TYR:CE2	2.55	0.41
1:A:63:THR:HG22	1:A:64:ASN:ND2	2.35	0.41
1:A:252:VAL:HG11	1:A:284:MET:SD	2.60	0.41
1:A:184:PHE:HA	1:A:194:ILE:O	2.20	0.41
1:B:317:ILE:HD13	1:B:327:LEU:HD21	2.02	0.41
1:A:216:ALA:HA	1:A:219:PHE:CD2	2.55	0.41
1:A:238:ALA:HA	1:A:239:PRO:HD3	1.78	0.41
1:A:246:GLY:HA3	1:B:243:ARG:NE	2.36	0.41
1:B:97:GLU:CG	1:B:279:TYR:CE1	3.03	0.41
1:A:244:TYR:N	1:B:244:TYR:O	2.51	0.41
1:A:175:LEU:HD12	1:A:175:LEU:HA	1.85	0.40
1:A:245:VAL:O	1:A:245:VAL:HG12	2.20	0.40
1:A:309:ASP:O	1:A:312:GLN:HB2	2.21	0.40
1:A:96:THR:OG1	1:A:117:PHE:CZ	2.73	0.40
1:A:176:ALA:O	1:A:177:MET:HG3	2.21	0.40
1:A:265:PRO:HA	1:A:315:PRO:HB2	2.03	0.40

*Continued on next page...*

*Continued from previous page...*

Atom-1	Atom-2	Interatomic distance (Å)	Clash overlap (Å)
1:B:120:LEU:HD12	1:B:120:LEU:HA	1.88	0.40
1:B:58:GLY:HA2	1:B:62:SER:CA	2.50	0.40
1:B:273:GLY:O	1:B:313:ARG:HD3	2.22	0.40

All (1) symmetry-related close contacts are listed below. The label for Atom-2 includes the symmetry operator and encoded unit-cell translations to be applied.

Atom-1	Atom-2	Interatomic distance (Å)	Clash overlap (Å)
1:B:4:ALA:O	1:B:4:ALA:O[2_765]	1.96	0.24

## 5.3 Torsion angles [i](#)

### 5.3.1 Protein backbone [i](#)

In the following table, the Percentiles column shows the percent Ramachandran outliers of the chain as a percentile score with respect to all X-ray entries followed by that with respect to entries of similar resolution.

The Analysed column shows the number of residues for which the backbone conformation was analysed, and the total number of residues.

Mol	Chain	Analysed	Favoured	Allowed	Outliers	Percentiles	
1	A	335/337 (99%)	282 (84%)	43 (13%)	10 (3%)	4	2
1	B	335/337 (99%)	289 (86%)	36 (11%)	10 (3%)	4	2
All	All	670/674 (99%)	571 (85%)	79 (12%)	20 (3%)	4	2

All (20) Ramachandran outliers are listed below:

Mol	Chain	Res	Type
1	A	178	VAL
1	B	63	THR
1	B	68	ASP
1	B	153	LEU
1	B	269	LYS
1	A	25	ARG
1	A	65	VAL
1	B	2	ASP
1	B	178	VAL
1	A	5	ALA

*Continued on next page...*

*Continued from previous page...*

Mol	Chain	Res	Type
1	A	62	SER
1	B	4	ALA
1	B	70	VAL
1	A	6	PHE
1	A	61	GLY
1	B	147	PRO
1	A	123	SER
1	A	131	SER
1	B	234	PRO
1	A	70	VAL

### 5.3.2 Protein sidechains [i](#)

In the following table, the Percentiles column shows the percent sidechain outliers of the chain as a percentile score with respect to all X-ray entries followed by that with respect to entries of similar resolution.

The Analysed column shows the number of residues for which the sidechain conformation was analysed, and the total number of residues.

Mol	Chain	Analysed	Rotameric	Outliers	Percentiles	
1	A	278/278 (100%)	257 (92%)	21 (8%)	13	16
1	B	278/278 (100%)	263 (95%)	15 (5%)	22	30
All	All	556/556 (100%)	520 (94%)	36 (6%)	17	23

All (36) residues with a non-rotameric sidechain are listed below:

Mol	Chain	Res	Type
1	A	25	ARG
1	A	38	CYS
1	A	68	ASP
1	A	70	VAL
1	A	76	LEU
1	A	91	THR
1	A	99	ASP
1	A	120	LEU
1	A	141	LYS
1	A	143	SER
1	A	160	VAL
1	A	172	MET
1	A	179	ASN

*Continued on next page...*



*Continued from previous page...*

Mol	Chain	Res	Type
1	A	197	ASP
1	A	199	ASN
1	A	224	THR
1	A	276	ARG
1	A	283	PRO
1	A	299	LYS
1	A	325	THR
1	A	331	TYR
1	B	6	PHE
1	B	37	LEU
1	B	38	CYS
1	B	45	SER
1	B	65	VAL
1	B	96	THR
1	B	99	ASP
1	B	112	LYS
1	B	178	VAL
1	B	197	ASP
1	B	199	ASN
1	B	210	SER
1	B	272	LYS
1	B	276	ARG
1	B	316	ILE

Sometimes sidechains can be flipped to improve hydrogen bonding and reduce clashes. All (11) such sidechains are listed below:

Mol	Chain	Res	Type
1	A	35	ASN
1	A	64	ASN
1	A	179	ASN
1	A	182	ASN
1	A	199	ASN
1	A	282	ASN
1	B	9	ASN
1	B	228	GLN
1	B	236	ASN
1	B	282	ASN
1	B	332	GLN

### 5.3.3 RNA [i](#)

There are no RNA molecules in this entry.

## 5.4 Non-standard residues in protein, DNA, RNA chains [i](#)

There are no non-standard protein/DNA/RNA residues in this entry.

## 5.5 Carbohydrates [i](#)

There are no monosaccharides in this entry.

## 5.6 Ligand geometry [i](#)

Of 6 ligands modelled in this entry, 2 are monoatomic - leaving 4 for Mogul analysis.

In the following table, the Counts columns list the number of bonds (or angles) for which Mogul statistics could be retrieved, the number of bonds (or angles) that are observed in the model and the number of bonds (or angles) that are defined in the Chemical Component Dictionary. The Link column lists molecule types, if any, to which the group is linked. The Z score for a bond length (or angle) is the number of standard deviations the observed value is removed from the expected value. A bond length (or angle) with  $|Z| > 2$  is considered an outlier worth inspection. RMSZ is the root-mean-square of all Z scores of the bond lengths (or angles).

Mol	Type	Chain	Res	Link	Bond lengths			Bond angles		
					Counts	RMSZ	# Z  > 2	Counts	RMSZ	# Z  > 2
4	AMP	A	340	-	22,25,25	1.79	3 (13%)	25,38,38	1.81	6 (24%)
2	F6P	A	338	3	15,16,16	1.68	4 (26%)	17,25,25	1.88	5 (29%)
2	F6P	B	338	-	15,16,16	1.17	3 (20%)	17,25,25	2.13	5 (29%)
4	AMP	B	340	-	22,25,25	1.14	3 (13%)	25,38,38	1.79	6 (24%)

In the following table, the Chirals column lists the number of chiral outliers, the number of chiral centers analysed, the number of these observed in the model and the number defined in the Chemical Component Dictionary. Similar counts are reported in the Torsion and Rings columns. '-' means no outliers of that kind were identified.

Mol	Type	Chain	Res	Link	Chirals	Torsions	Rings
4	AMP	A	340	-	-	3/6/26/26	0/3/3/3
2	F6P	A	338	3	-	6/9/28/28	0/1/1/1
2	F6P	B	338	-	-	5/9/28/28	0/1/1/1
4	AMP	B	340	-	-	1/6/26/26	0/3/3/3

All (13) bond length outliers are listed below:

Mol	Chain	Res	Type	Atoms	Z	Observed(Å)	Ideal(Å)
4	A	340	AMP	C2-N1	5.56	1.44	1.33
4	A	340	AMP	C2-N3	4.54	1.39	1.32
2	A	338	F6P	C1-C2	3.42	1.57	1.52
2	A	338	F6P	O5-C2	-2.88	1.38	1.43
2	A	338	F6P	O1-C1	2.78	1.51	1.42
4	B	340	AMP	C5'-C4'	-2.66	1.43	1.51
4	A	340	AMP	C4-N3	2.60	1.39	1.35
2	B	338	F6P	O5-C2	-2.40	1.39	1.43
4	B	340	AMP	C2-N1	2.15	1.37	1.33
2	B	338	F6P	O5-C5	2.11	1.48	1.43
2	A	338	F6P	O5-C5	2.10	1.48	1.43
4	B	340	AMP	C8-N7	2.02	1.38	1.34
2	B	338	F6P	C1-C2	2.02	1.55	1.52

All (22) bond angle outliers are listed below:

Mol	Chain	Res	Type	Atoms	Z	Observed(°)	Ideal(°)
2	B	338	F6P	O5-C5-C6	4.42	119.18	109.45
4	A	340	AMP	O5'-P-O1P	4.31	118.57	106.47
4	B	340	AMP	O5'-P-O1P	4.31	118.57	106.47
2	B	338	F6P	O4-C4-C5	4.10	122.91	111.05
4	A	340	AMP	C1'-N9-C4	-3.80	119.96	126.64
4	B	340	AMP	O2P-P-O1P	-3.69	96.23	110.68
4	B	340	AMP	N3-C2-N1	-3.67	122.94	128.68
4	A	340	AMP	C4-C5-N7	3.64	113.20	109.40
2	B	338	F6P	O2P-P-O6	3.46	115.93	106.73
2	A	338	F6P	O5-C5-C6	3.38	116.90	109.45
2	A	338	F6P	O1-C1-C2	3.30	118.88	111.86
4	A	340	AMP	N6-C6-N1	3.15	125.11	118.57
2	B	338	F6P	O6-C6-C5	3.04	119.44	108.99
2	A	338	F6P	O4-C4-C5	2.99	119.70	111.05
2	A	338	F6P	O3P-P-O6	2.66	113.82	106.73
4	A	340	AMP	N3-C2-N1	-2.56	124.68	128.68
2	B	338	F6P	O5-C5-C4	-2.56	99.13	105.49
4	B	340	AMP	O3P-P-O5'	2.48	113.32	106.73
4	B	340	AMP	P-O5'-C5'	-2.22	112.19	118.30
4	B	340	AMP	O3'-C3'-C2'	-2.16	104.84	111.82
4	A	340	AMP	C5-C6-N1	-2.10	115.59	120.35
2	A	338	F6P	P-O6-C6	2.08	124.03	118.30

There are no chirality outliers.

All (15) torsion outliers are listed below:

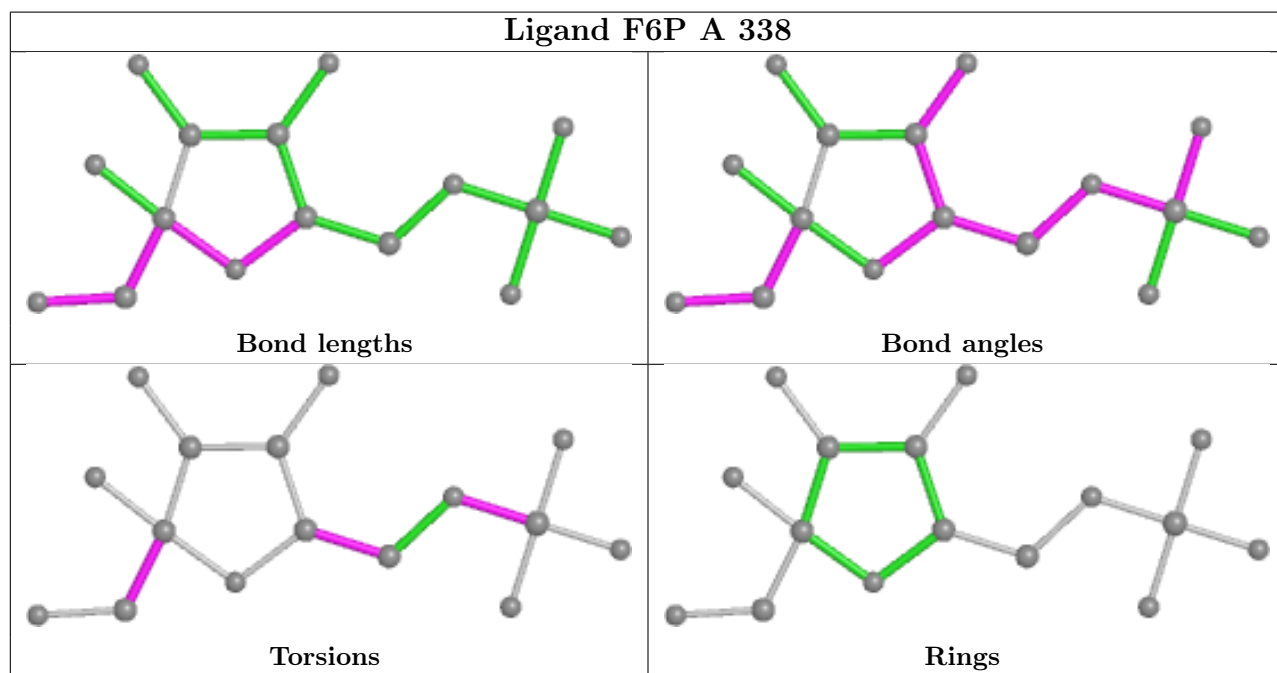
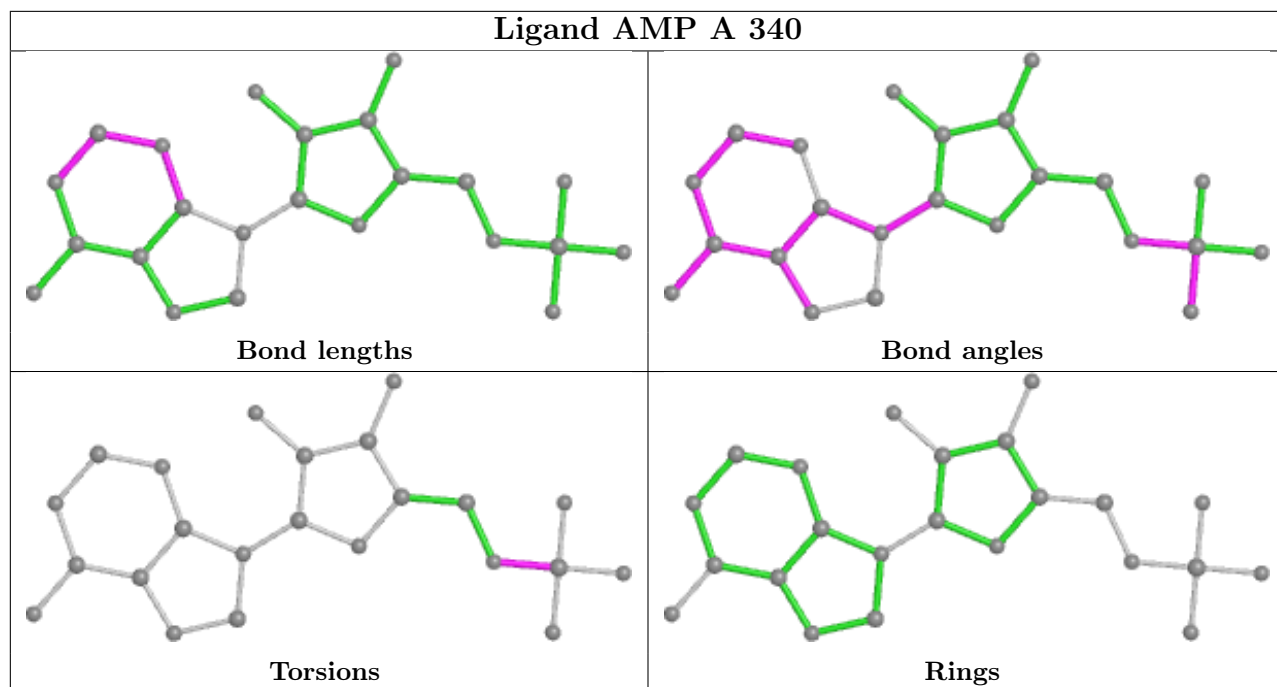
Mol	Chain	Res	Type	Atoms
2	A	338	F6P	C4-C5-C6-O6
2	A	338	F6P	C6-O6-P-O1P
2	A	338	F6P	C6-O6-P-O3P
2	B	338	F6P	C6-O6-P-O1P
2	B	338	F6P	C6-O6-P-O2P
2	B	338	F6P	C6-O6-P-O3P
4	A	340	AMP	C5'-O5'-P-O1P
4	A	340	AMP	C5'-O5'-P-O3P
2	B	338	F6P	C4-C5-C6-O6
2	A	338	F6P	O5-C5-C6-O6
2	B	338	F6P	O5-C5-C6-O6
2	A	338	F6P	O1-C1-C2-O2
4	A	340	AMP	C5'-O5'-P-O2P
4	B	340	AMP	C5'-O5'-P-O1P
2	A	338	F6P	O1-C1-C2-O5

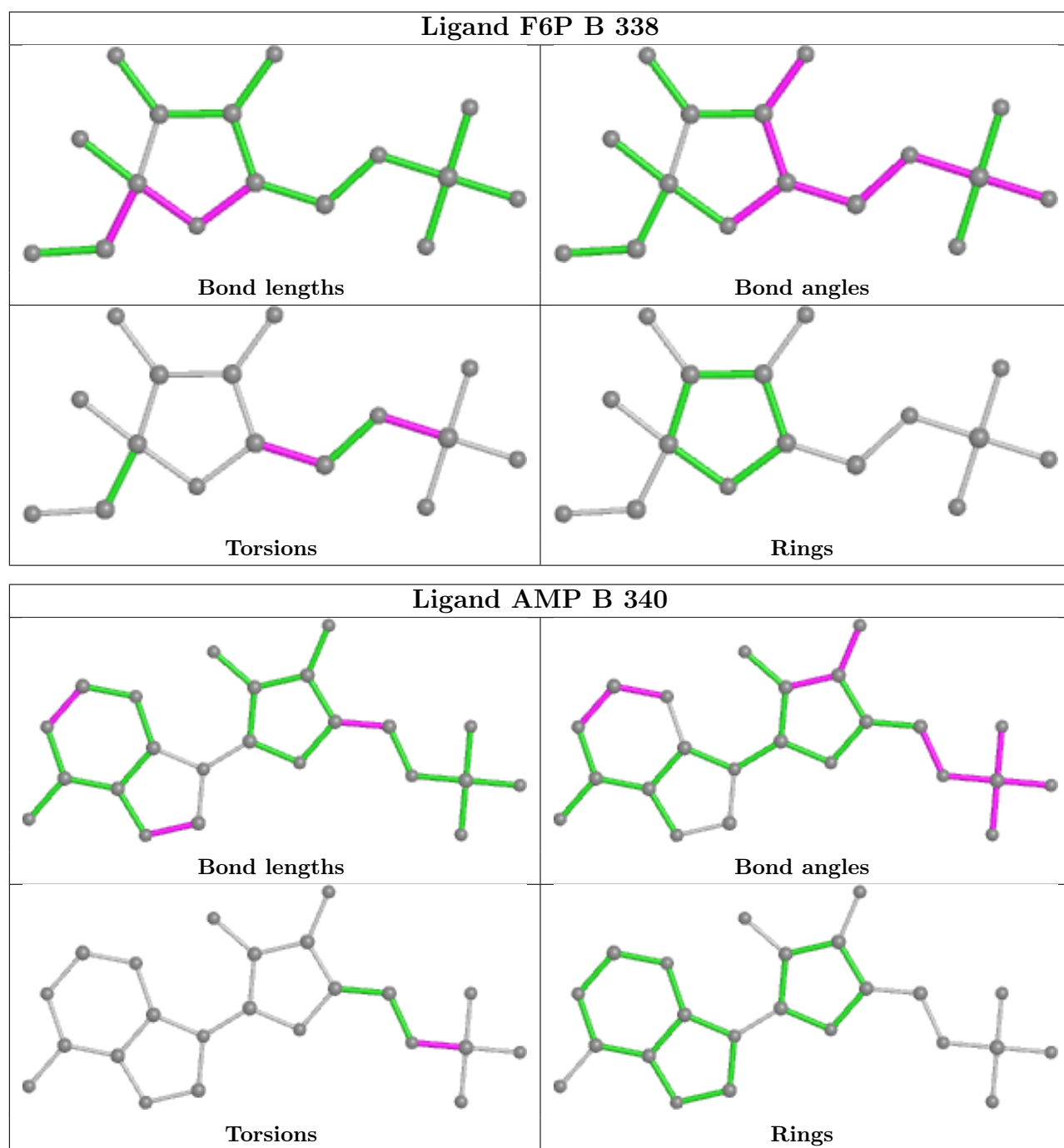
There are no ring outliers.

2 monomers are involved in 2 short contacts:

Mol	Chain	Res	Type	Clashes	Symm-Clashes
4	A	340	AMP	1	0
4	B	340	AMP	1	0

The following is a two-dimensional graphical depiction of Mogul quality analysis of bond lengths, bond angles, torsion angles, and ring geometry for all instances of the Ligand of Interest. In addition, ligands with molecular weight > 250 and outliers as shown on the validation Tables will also be included. For torsion angles, if less than 5% of the Mogul distribution of torsion angles is within 10 degrees of the torsion angle in question, then that torsion angle is considered an outlier. Any bond that is central to one or more torsion angles identified as an outlier by Mogul will be highlighted in the graph. For rings, the root-mean-square deviation (RMSD) between the ring in question and similar rings identified by Mogul is calculated over all ring torsion angles. If the average RMSD is greater than 60 degrees and the minimal RMSD between the ring in question and any Mogul-identified rings is also greater than 60 degrees, then that ring is considered an outlier. The outliers are highlighted in purple. The color gray indicates Mogul did not find sufficient equivalents in the CSD to analyse the geometry.





## 5.7 Other polymers [i](#)

There are no such residues in this entry.

## 5.8 Polymer linkage issues [i](#)

There are no chain breaks in this entry.

## 6 Fit of model and data [i](#)

### 6.1 Protein, DNA and RNA chains [i](#)

EDS was not executed - this section is therefore empty.

### 6.2 Non-standard residues in protein, DNA, RNA chains [i](#)

EDS was not executed - this section is therefore empty.

### 6.3 Carbohydrates [i](#)

EDS was not executed - this section is therefore empty.

### 6.4 Ligands [i](#)

EDS was not executed - this section is therefore empty.

### 6.5 Other polymers [i](#)

EDS was not executed - this section is therefore empty.