



Full wwPDB X-ray Structure Validation Report ⓘ

Jan 28, 2024 – 01:08 PM EST

PDB ID : 1EM0
Title : COMPLEX OF D(CCTAGG) WITH TETRA-[N-METHYL-PYRIDYL] PORPHYRIN
Authors : Neidle, S.; Sanderson, M.; Bennett, M.; Krah, A.; Wien, F.; Garman, E.; McKenna, R.
Deposited on : 2000-03-14
Resolution : 0.90 Å(reported)

This is a Full wwPDB X-ray Structure Validation Report for a publicly released PDB entry.

We welcome your comments at validation@mail.wwpdb.org

A user guide is available at

<https://www.wwpdb.org/validation/2017/XrayValidationReportHelp>

with specific help available everywhere you see the ⓘ symbol.

The types of validation reports are described at

<http://www.wwpdb.org/validation/2017/FAQs#types>.

The following versions of software and data (see [references ⓘ](#)) were used in the production of this report:

MolProbity : 4.02b-467
Mogul : 1.8.5 (274361), CSD as541be (2020)
Xtrriage (Phenix) : 1.13
EDS : 2.36
buster-report : 1.1.7 (2018)
Percentile statistics : 20191225.v01 (using entries in the PDB archive December 25th 2019)
Refmac : 5.8.0158
CCP4 : 7.0.044 (Gargrove)
Ideal geometry (proteins) : Engh & Huber (2001)
Ideal geometry (DNA, RNA) : Parkinson et al. (1996)
Validation Pipeline (wwPDB-VP) : 2.36

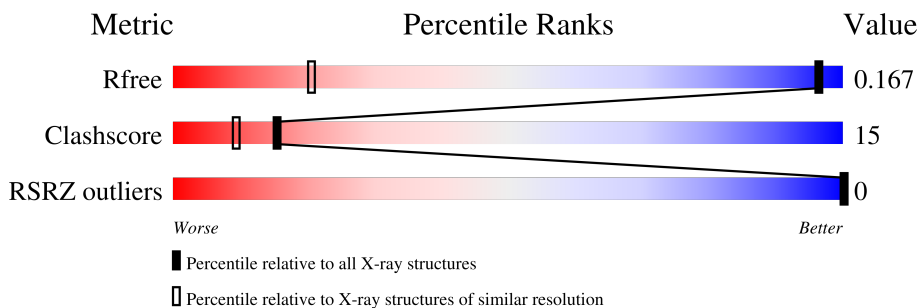
1 Overall quality at a glance

The following experimental techniques were used to determine the structure:

X-RAY DIFFRACTION

The reported resolution of this entry is 0.90 Å.

Percentile scores (ranging between 0-100) for global validation metrics of the entry are shown in the following graphic. The table shows the number of entries on which the scores are based.



Metric	Whole archive (#Entries)	Similar resolution (#Entries, resolution range(Å))
R_{free}	130704	1061 (1.04-0.76)
Clashscore	141614	1132 (1.04-0.76)
RSRZ outliers	127900	1028 (1.04-0.76)

The table below summarises the geometric issues observed across the polymeric chains and their fit to the electron density. The red, orange, yellow and green segments of the lower bar indicate the fraction of residues that contain outliers for ≥ 3 , 2, 1 and 0 types of geometric quality criteria respectively. A grey segment represents the fraction of residues that are not modelled. The numeric value for each fraction is indicated below the corresponding segment, with a dot representing fractions $\leq 5\%$. The upper red bar (where present) indicates the fraction of residues that have poor fit to the electron density. The numeric value is given above the bar.

Mol	Chain	Length	Quality of chain
1	A	6	
1	B	6	
1	C	6	
1	D	6	

2 Entry composition

There are 4 unique types of molecules in this entry. The entry contains 1170 atoms, of which 350 are hydrogens and 0 are deuteriums.

In the tables below, the ZeroOcc column contains the number of atoms modelled with zero occupancy, the AltConf column contains the number of residues with at least one atom in alternate conformation and the Trace column contains the number of residues modelled with at most 2 atoms.

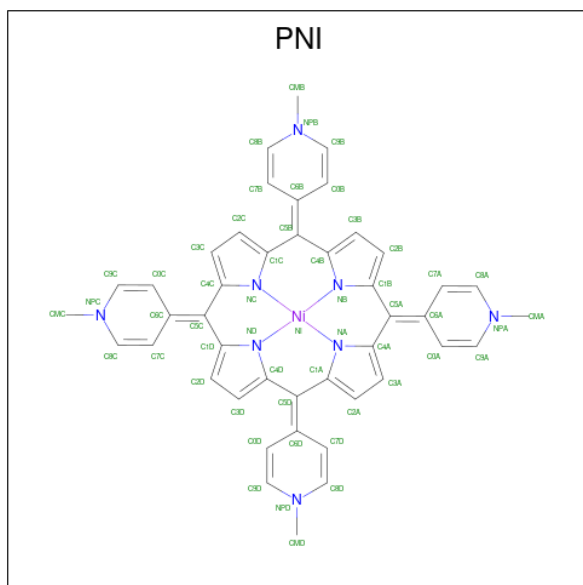
- Molecule 1 is a DNA chain called DNA (5'-D*(CBR)P*CP*TP*AP*GP*G)-3').

Mol	Chain	Residues	Atoms							ZeroOcc	AltConf	Trace
			Total	Br	C	H	N	O	P			
1	A	6	189	1	58	68	23	34	5	0	0	0
1	B	6	199	1	60	71	23	38	6	0	2	0
1	C	6	189	1	58	68	23	34	5	0	0	0
1	D	6	199	1	60	71	23	38	6	0	2	0

- Molecule 2 is MAGNESIUM ION (three-letter code: MG) (formula: Mg).

Mol	Chain	Residues	Atoms		ZeroOcc	AltConf
2	A	1	Total	Mg	0	0
			1	1		
2	C	1	Total	Mg	0	0
			1	1		

- Molecule 3 is TETRA[N-METHYL-PYRIDYL] PORPHYRIN-NICKEL (three-letter code: PNI) (formula: C₄₄H₃₆N₈Ni).



Mol	Chain	Residues	Atoms				ZeroOcc	AltConf	
			Total	C	H	N			Ni
3	B	1	89	44	36	8	1	0	0
3	D	1	89	44	36	8	1	0	0

- Molecule 4 is water.

Mol	Chain	Residues	Atoms		ZeroOcc	AltConf
4	A	61	Total	O	0	0
			61	61		
4	B	48	Total	O	0	0
			48	48		
4	C	55	Total	O	0	0
			55	55		
4	D	50	Total	O	0	0
			50	50		

3 Residue-property plots

These plots are drawn for all protein, RNA, DNA and oligosaccharide chains in the entry. The first graphic for a chain summarises the proportions of the various outlier classes displayed in the second graphic. The second graphic shows the sequence view annotated by issues in geometry and electron density. Residues are color-coded according to the number of geometric quality criteria for which they contain at least one outlier: green = 0, yellow = 1, orange = 2 and red = 3 or more. A red dot above a residue indicates a poor fit to the electron density ($RSRZ > 2$). Stretches of 2 or more consecutive residues without any outlier are shown as a green connector. Residues present in the sample, but not in the model, are shown in grey.

- Molecule 1: DNA (5'-D*(CBR)P*CP*TP*AP*GP*G)-3')



- Molecule 1: DNA (5'-D*(CBR)P*CP*TP*AP*GP*G)-3')



- Molecule 1: DNA (5'-D*(CBR)P*CP*TP*AP*GP*G)-3')



- Molecule 1: DNA (5'-D*(CBR)P*CP*TP*AP*GP*G)-3')



4 Data and refinement statistics i

Property	Value	Source
Space group	P 41	Depositor
Cell constants a, b, c, α , β , γ	32.21Å 32.21Å 62.26Å 90.00° 90.00° 90.00°	Depositor
Resolution (Å)	6.00 – 0.90 32.21 – 0.90	Depositor EDS
% Data completeness (in resolution range)	(Not available) (6.00-0.90) 95.2 (32.21-0.90)	Depositor EDS
R_{merge}	0.02	Depositor
R_{sym}	(Not available)	Depositor
$\langle I/\sigma(I) \rangle$ ¹	1.39 (at 0.90Å)	Xtrriage
Refinement program	SHELXL-97	Depositor
R, R_{free}	0.152 , 0.172 0.160 , 0.167	Depositor DCC
R_{free} test set	9917 reflections (5.15%)	wwPDB-VP
Wilson B-factor (Å ²)	6.7	Xtrriage
Anisotropy	0.402	Xtrriage
Bulk solvent k_{sol} (e/Å ³), B_{sol} (Å ²)	0.30 , 44.8	EDS
L-test for twinning ²	$\langle L \rangle = 0.51$, $\langle L^2 \rangle = 0.34$	Xtrriage
Estimated twinning fraction	0.487 for h,-k,-l	Xtrriage
F_o, F_c correlation	0.98	EDS
Total number of atoms	1170	wwPDB-VP
Average B, all atoms (Å ²)	13.0	wwPDB-VP

Xtrriage's analysis on translational NCS is as follows: *The analyses of the Patterson function reveals a significant off-origin peak that is 22.84 % of the origin peak, indicating pseudo-translational symmetry. The chance of finding a peak of this or larger height randomly in a structure without pseudo-translational symmetry is equal to 5.2554e-03. The detected translational NCS is most likely also responsible for the elevated intensity ratio.*

¹Intensities estimated from amplitudes.

²Theoretical values of $\langle |L| \rangle$, $\langle L^2 \rangle$ for acentric reflections are 0.5, 0.333 respectively for untwinned datasets, and 0.375, 0.2 for perfectly twinned datasets.

5 Model quality [i](#)

5.1 Standard geometry [i](#)

Bond lengths and bond angles in the following residue types are not validated in this section: CBR, MG, PNI

The Z score for a bond length (or angle) is the number of standard deviations the observed value is removed from the expected value. A bond length (or angle) with $|Z| > 5$ is considered an outlier worth inspection. RMSZ is the root-mean-square of all Z scores of the bond lengths (or angles).

Mol	Chain	Bond lengths		Bond angles	
		RMSZ	# Z >5	RMSZ	# Z >5
1	A	5.58	29/117 (24.8%)	3.65	24/181 (13.3%)
1	B	5.95	35/139 (25.2%)	2.94	18/217 (8.3%)
1	C	5.90	27/117 (23.1%)	4.03	32/181 (17.7%)
1	D	6.62	34/139 (24.5%)	3.12	22/217 (10.1%)
All	All	6.05	125/512 (24.4%)	3.43	96/796 (12.1%)

Chiral center outliers are detected by calculating the chiral volume of a chiral center and verifying if the center is modelled as a planar moiety or with the opposite hand. A planarity outlier is detected by checking planarity of atoms in a peptide group, atoms in a mainchain group or atoms of a sidechain that are expected to be planar.

Mol	Chain	#Chirality outliers	#Planarity outliers
1	A	0	3
1	B	0	2
1	C	0	2
1	D	0	2
All	All	0	9

All (125) bond length outliers are listed below:

Mol	Chain	Res	Type	Atoms	Z	Observed(Å)	Ideal(Å)
1	D	20[C]	DC	C5'-C4'	-43.64	1.03	1.51
1	D	20[D]	DC	C5'-C4'	-43.64	1.03	1.51
1	B	8[A]	DC	C5'-C4'	-34.77	1.13	1.51
1	B	8[B]	DC	C5'-C4'	-34.77	1.13	1.51
1	A	6	DG	C4'-C3'	-34.74	1.17	1.52
1	C	18	DG	C4'-C3'	-31.02	1.21	1.52
1	C	18	DG	C2'-C1'	27.40	1.79	1.52
1	C	18	DG	N9-C8	-14.93	1.27	1.37
1	A	5	DG	N3-C4	-14.70	1.25	1.35
1	C	18	DG	C5'-C4'	14.03	1.66	1.51

Continued on next page...

Continued from previous page...

Mol	Chain	Res	Type	Atoms	Z	Observed(Å)	Ideal(Å)
1	A	5	DG	N1-C2	11.38	1.46	1.37
1	A	6	DG	C3'-O3'	11.34	1.58	1.44
1	C	18	DG	N3-C4	-11.15	1.27	1.35
1	D	20[C]	DC	C2-N3	11.05	1.44	1.35
1	D	20[D]	DC	C2-N3	11.05	1.44	1.35
1	B	11	DG	N3-C4	11.04	1.43	1.35
1	A	5	DG	N9-C4	10.65	1.46	1.38
1	C	18	DG	C6-N1	-10.57	1.32	1.39
1	D	22	DA	C8-N7	-10.48	1.24	1.31
1	A	6	DG	C3'-C2'	10.31	1.64	1.52
1	C	13	CBR	O3'-P	-9.96	1.49	1.61
1	B	8[A]	DC	P-OP1	-9.94	1.32	1.49
1	B	8[B]	DC	P-OP1	-9.94	1.32	1.49
1	B	7[A]	CBR	O3'-P	-9.78	1.49	1.61
1	B	7[B]	CBR	O3'-P	-9.78	1.49	1.61
1	A	6	DG	C4'-O4'	9.76	1.54	1.45
1	D	21	DT	C4'-C3'	-9.73	1.42	1.52
1	A	6	DG	N3-C4	-9.54	1.28	1.35
1	B	12	DG	N1-C2	9.19	1.45	1.37
1	C	17	DG	N1-C2	9.00	1.45	1.37
1	A	6	DG	C2-N3	8.91	1.39	1.32
1	D	20[C]	DC	C2'-C1'	-8.82	1.43	1.52
1	D	20[D]	DC	C2'-C1'	-8.82	1.43	1.52
1	A	4	DA	N7-C5	-8.64	1.34	1.39
1	B	10	DA	C5-C4	-8.53	1.32	1.38
1	D	21	DT	C5-C6	8.52	1.40	1.34
1	C	18	DG	C5-C4	8.43	1.44	1.38
1	B	9	DT	C3'-C2'	-8.40	1.42	1.52
1	C	18	DG	N9-C4	8.31	1.44	1.38
1	B	11	DG	C8-N7	-8.29	1.25	1.30
1	B	8[A]	DC	P-OP2	8.26	1.62	1.49
1	B	8[B]	DC	P-OP2	8.26	1.62	1.49
1	A	6	DG	N9-C4	8.26	1.44	1.38
1	B	8[A]	DC	C3'-O3'	-8.14	1.33	1.44
1	B	8[B]	DC	C3'-O3'	-8.14	1.33	1.44
1	A	1	CBR	O3'-P	-8.13	1.51	1.61
1	C	18	DG	C2-N2	-7.92	1.26	1.34
1	C	17	DG	C2-N3	-7.91	1.26	1.32
1	C	14	DC	P-OP2	7.87	1.62	1.49
1	B	8[A]	DC	C2-O2	-7.72	1.17	1.24
1	B	8[B]	DC	C2-O2	-7.72	1.17	1.24
1	B	12	DG	C6-N1	-7.47	1.34	1.39

Continued on next page...

Continued from previous page...

Mol	Chain	Res	Type	Atoms	Z	Observed(Å)	Ideal(Å)
1	C	17	DG	C8-N7	-7.46	1.26	1.30
1	A	2	DC	N3-C4	-7.45	1.28	1.33
1	C	18	DG	O5'-C5'	7.35	1.60	1.42
1	D	21	DT	P-OP2	-7.26	1.36	1.49
1	C	16	DA	N7-C5	-7.22	1.34	1.39
1	A	3	DT	C5'-C4'	-7.21	1.43	1.51
1	A	6	DG	O4'-C1'	7.17	1.50	1.42
1	C	14	DC	C5'-C4'	-7.09	1.43	1.51
1	A	5	DG	C5-C4	7.08	1.43	1.38
1	B	8[A]	DC	O5'-C5'	-6.98	1.24	1.42
1	B	8[B]	DC	O5'-C5'	-6.98	1.24	1.42
1	A	6	DG	C2-N2	-6.97	1.27	1.34
1	D	21	DT	C5'-C4'	6.94	1.58	1.51
1	A	6	DG	C6-N1	-6.90	1.34	1.39
1	D	22	DA	C2-N3	6.90	1.39	1.33
1	B	12	DG	N7-C5	6.82	1.43	1.39
1	D	22	DA	C5-C4	-6.82	1.33	1.38
1	D	22	DA	C5-C6	6.79	1.47	1.41
1	B	10	DA	C8-N7	-6.78	1.26	1.31
1	D	20[C]	DC	C2-O2	-6.62	1.18	1.24
1	D	20[D]	DC	C2-O2	-6.62	1.18	1.24
1	A	4	DA	N9-C4	-6.62	1.33	1.37
1	B	9	DT	C2-O2	-6.58	1.17	1.22
1	A	3	DT	C5-C7	6.57	1.53	1.50
1	D	20[C]	DC	O5'-C5'	6.56	1.58	1.42
1	D	20[D]	DC	O5'-C5'	6.56	1.58	1.42
1	D	21	DT	N1-C6	-6.42	1.33	1.38
1	D	21	DT	C4'-O4'	6.40	1.51	1.45
1	D	23	DG	N3-C4	6.30	1.39	1.35
1	D	21	DT	C2-O2	-6.29	1.17	1.22
1	B	10	DA	C5'-C4'	-6.28	1.44	1.51
1	D	20[C]	DC	P-OP2	6.25	1.59	1.49
1	D	20[D]	DC	P-OP2	6.25	1.59	1.49
1	A	5	DG	C8-N7	-6.21	1.27	1.30
1	A	2	DC	C5'-C4'	-6.20	1.44	1.51
1	B	9	DT	N1-C6	-6.19	1.33	1.38
1	C	15	DT	C5'-C4'	-6.15	1.44	1.51
1	B	9	DT	P-OP2	-6.12	1.38	1.49
1	A	4	DA	C2'-C1'	6.09	1.58	1.52
1	C	14	DC	N3-C4	-6.09	1.29	1.33
1	B	8[A]	DC	N3-C4	6.05	1.38	1.33
1	B	8[B]	DC	N3-C4	6.05	1.38	1.33

Continued on next page...

Continued from previous page...

Mol	Chain	Res	Type	Atoms	Z	Observed(Å)	Ideal(Å)
1	C	14	DC	C2'-C1'	-6.02	1.46	1.52
1	D	24	DG	N1-C2	5.96	1.42	1.37
1	B	10	DA	P-O5'	-5.88	1.53	1.59
1	A	6	DG	C8-N7	-5.87	1.27	1.30
1	D	20[C]	DC	C3'-O3'	-5.82	1.36	1.44
1	D	20[D]	DC	C3'-O3'	-5.82	1.36	1.44
1	C	18	DG	C2-N3	5.81	1.37	1.32
1	D	20[C]	DC	P-O5'	-5.79	1.53	1.59
1	D	20[D]	DC	P-O5'	-5.79	1.53	1.59
1	C	17	DG	N7-C5	-5.69	1.35	1.39
1	C	14	DC	N1-C6	-5.63	1.33	1.37
1	D	21	DT	C4-C5	5.53	1.50	1.45
1	B	9	DT	O4'-C1'	-5.49	1.35	1.42
1	C	16	DA	C2'-C1'	5.43	1.57	1.52
1	D	20[C]	DC	N1-C6	5.35	1.40	1.37
1	D	20[D]	DC	N1-C6	5.35	1.40	1.37
1	C	15	DT	C2-O2	-5.33	1.18	1.22
1	B	9	DT	C5-C6	5.30	1.38	1.34
1	D	21	DT	C5-C7	-5.26	1.46	1.50
1	C	16	DA	C4'-C3'	5.21	1.58	1.53
1	A	3	DT	N1-C2	5.20	1.42	1.38
1	B	9	DT	C4'-O4'	5.20	1.50	1.45
1	A	6	DG	N7-C5	5.19	1.42	1.39
1	B	8[A]	DC	C5-C6	-5.14	1.30	1.34
1	B	8[B]	DC	C5-C6	-5.14	1.30	1.34
1	A	2	DC	N1-C6	-5.09	1.34	1.37
1	B	11	DG	N9-C4	-5.07	1.33	1.38
1	A	5	DG	O4'-C1'	-5.05	1.36	1.42
1	A	6	DG	N9-C8	-5.03	1.34	1.37
1	D	24	DG	N7-C5	5.02	1.42	1.39
1	C	14	DC	C2-N3	5.00	1.39	1.35

All (96) bond angle outliers are listed below:

Mol	Chain	Res	Type	Atoms	Z	Observed(°)	Ideal(°)
1	C	18	DG	O4'-C1'-C2'	-19.90	89.98	105.90
1	A	6	DG	C4'-C3'-C2'	18.18	119.46	103.10
1	C	18	DG	N9-C4-C5	-13.53	99.99	105.40
1	B	7[A]	CBR	P-O3'-C3'	13.13	135.46	119.70
1	B	7[B]	CBR	P-O3'-C3'	13.13	135.46	119.70
1	C	18	DG	C4'-C3'-C2'	11.69	113.62	103.10
1	A	5	DG	N9-C4-C5	-11.46	100.81	105.40

Continued on next page...

Continued from previous page...

Mol	Chain	Res	Type	Atoms	Z	Observed(°)	Ideal(°)
1	C	18	DG	C8-N9-C4	10.58	110.63	106.40
1	D	19[C]	CBR	P-O3'-C3'	10.14	131.87	119.70
1	D	19[D]	CBR	P-O3'-C3'	10.14	131.87	119.70
1	D	20[C]	DC	C6-N1-C2	10.09	124.33	120.30
1	D	20[D]	DC	C6-N1-C2	10.09	124.33	120.30
1	A	5	DG	C5-C6-N1	9.97	116.48	111.50
1	C	18	DG	N1-C6-O6	9.92	125.85	119.90
1	A	5	DG	N3-C4-C5	9.92	133.56	128.60
1	C	18	DG	C6-N1-C2	9.82	131.00	125.10
1	B	11	DG	C8-N9-C4	-9.22	102.71	106.40
1	A	6	DG	C6-N1-C2	9.06	130.53	125.10
1	A	6	DG	N1-C2-N3	-9.00	118.50	123.90
1	C	18	DG	C3'-C2'-C1'	-8.91	91.81	102.50
1	B	11	DG	N9-C4-C5	8.79	108.92	105.40
1	B	8[A]	DC	P-O5'-C5'	8.56	134.60	120.90
1	B	8[B]	DC	P-O5'-C5'	8.56	134.60	120.90
1	A	5	DG	C6-N1-C2	-8.53	119.98	125.10
1	C	18	DG	N3-C4-N9	8.50	131.10	126.00
1	A	1	CBR	P-O3'-C3'	8.44	129.83	119.70
1	A	5	DG	C4-C5-C6	-8.42	113.75	118.80
1	A	6	DG	C3'-C2'-C1'	-8.36	92.47	102.50
1	C	18	DG	C5-C6-O6	-8.24	123.66	128.60
1	C	18	DG	N1-C2-N3	-8.20	118.98	123.90
1	C	18	DG	C4-N9-C1'	-8.09	115.98	126.50
1	D	20[C]	DC	C4-C5-C6	7.94	121.37	117.40
1	D	20[D]	DC	C4-C5-C6	7.94	121.37	117.40
1	C	17	DG	C5-C6-O6	-7.92	123.85	128.60
1	C	13	CBR	P-O3'-C3'	7.73	128.97	119.70
1	C	18	DG	O4'-C1'-N9	-7.68	102.62	108.00
1	A	6	DG	N9-C1'-C2'	7.67	127.18	112.60
1	A	6	DG	O4'-C1'-N9	-7.64	102.65	108.00
1	C	17	DG	C6-N1-C2	-7.62	120.53	125.10
1	D	20[C]	DC	P-O5'-C5'	7.19	132.41	120.90
1	D	20[D]	DC	P-O5'-C5'	7.19	132.41	120.90
1	D	23	DG	C6-N1-C2	7.13	129.38	125.10
1	D	21	DT	C4-C5-C6	-7.08	113.75	118.00
1	C	16	DA	C2-N3-C4	-6.96	107.12	110.60
1	A	6	DG	N9-C4-C5	-6.88	102.65	105.40
1	A	6	DG	C1'-O4'-C4'	-6.75	103.35	110.10
1	C	18	DG	C5-N7-C8	6.70	107.65	104.30
1	D	20[C]	DC	C5'-C4'-C3'	6.69	126.14	114.10
1	D	20[D]	DC	C5'-C4'-C3'	6.69	126.14	114.10

Continued on next page...

Continued from previous page...

Mol	Chain	Res	Type	Atoms	Z	Observed(°)	Ideal(°)
1	C	18	DG	O4'-C4'-C3'	6.69	110.01	106.00
1	C	17	DG	C5-C6-N1	6.65	114.83	111.50
1	B	8[A]	DC	C6-N1-C2	6.58	122.93	120.30
1	B	8[B]	DC	C6-N1-C2	6.58	122.93	120.30
1	D	21	DT	C1'-O4'-C4'	-6.53	103.57	110.10
1	C	14	DC	O4'-C1'-N1	-6.50	103.45	108.00
1	D	24	DG	C2-N3-C4	6.49	115.15	111.90
1	C	18	DG	N9-C1'-C2'	6.47	124.90	112.60
1	C	14	DC	C1'-O4'-C4'	-6.43	103.67	110.10
1	D	20[C]	DC	N1-C2-O2	6.39	122.73	118.90
1	D	20[D]	DC	N1-C2-O2	6.39	122.73	118.90
1	A	6	DG	N1-C6-O6	6.33	123.70	119.90
1	C	18	DG	P-O5'-C5'	-6.32	110.78	120.90
1	A	5	DG	C5-C6-O6	-6.23	124.86	128.60
1	A	6	DG	C2'-C3'-O3'	-6.17	92.23	112.60
1	C	14	DC	N1-C2-N3	-6.16	114.89	119.20
1	A	4	DA	N7-C8-N9	-5.96	110.82	113.80
1	A	6	DG	C4'-C3'-O3'	5.85	124.33	109.70
1	B	10	DA	N1-C2-N3	-5.85	126.38	129.30
1	C	14	DC	C6-N1-C2	5.84	122.64	120.30
1	B	11	DG	N3-C4-C5	-5.72	125.74	128.60
1	A	3	DT	C1'-O4'-C4'	-5.67	104.43	110.10
1	A	2	DC	O4'-C4'-C3'	5.66	109.40	106.00
1	C	17	DG	N9-C4-C5	-5.54	103.18	105.40
1	D	20[C]	DC	C5-C6-N1	-5.52	118.24	121.00
1	D	20[D]	DC	C5-C6-N1	-5.52	118.24	121.00
1	A	5	DG	C6-C5-N7	5.49	133.69	130.40
1	D	21	DT	C6-C5-C7	5.46	126.17	122.90
1	B	10	DA	P-O3'-C3'	5.39	126.17	119.70
1	C	17	DG	C4-C5-C6	-5.39	115.56	118.80
1	B	11	DG	C4-C5-N7	-5.38	108.65	110.80
1	B	8[A]	DC	N1-C2-N3	-5.36	115.45	119.20
1	B	8[B]	DC	N1-C2-N3	-5.36	115.45	119.20
1	A	4	DA	N3-C4-N9	-5.35	123.12	127.40
1	C	17	DG	N1-C2-N2	-5.34	111.39	116.20
1	C	14	DC	N1-C2-O2	5.26	122.05	118.90
1	C	17	DG	N7-C8-N9	5.21	115.70	113.10
1	D	24	DG	N3-C2-N2	5.17	123.52	119.90
1	A	5	DG	N3-C2-N2	5.16	123.51	119.90
1	D	21	DT	C3'-C2'-C1'	-5.16	96.31	102.50
1	C	18	DG	C1'-O4'-C4'	-5.14	104.96	110.10
1	C	14	DC	C2-N3-C4	5.11	122.46	119.90

Continued on next page...

Continued from previous page...

Mol	Chain	Res	Type	Atoms	Z	Observed(°)	Ideal(°)
1	B	8[A]	DC	O4'-C1'-C2'	5.06	109.95	105.90
1	B	8[B]	DC	O4'-C1'-C2'	5.06	109.95	105.90
1	D	22	DA	C8-N9-C4	-5.04	103.79	105.80
1	B	8[A]	DC	C5'-C4'-C3'	5.03	123.16	114.10
1	B	8[B]	DC	C5'-C4'-C3'	5.03	123.16	114.10

There are no chirality outliers.

All (9) planarity outliers are listed below:

Mol	Chain	Res	Type	Group
1	A	2	DC	Sidechain
1	A	4	DA	Sidechain
1	A	5	DG	Sidechain
1	B	10	DA	Sidechain
1	B	12	DG	Sidechain
1	C	14	DC	Sidechain
1	C	17	DG	Sidechain
1	D	22	DA	Sidechain
1	D	24	DG	Sidechain

5.2 Too-close contacts

In the following table, the Non-H and H(model) columns list the number of non-hydrogen atoms and hydrogen atoms in the chain respectively. The H(added) column lists the number of hydrogen atoms added and optimized by MolProbity. The Clashes column lists the number of clashes within the asymmetric unit, whereas Symm-Clashes lists symmetry-related clashes.

Mol	Chain	Non-H	H(model)	H(added)	Clashes	Symm-Clashes
1	A	121	68	64	0	0
1	B	128	71	55	1	0
1	C	121	68	64	1	0
1	D	128	71	56	2	0
2	A	1	0	0	0	0
2	C	1	0	0	0	0
3	B	53	36	36	4	0
3	D	53	36	36	4	0
4	A	61	0	0	0	1
4	B	48	0	0	0	2
4	C	55	0	0	0	0
4	D	50	0	0	1	0
All	All	820	350	311	12	2

The all-atom clashscore is defined as the number of clashes found per 1000 atoms (including hydrogen atoms). The all-atom clashscore for this structure is 15.

All (12) close contacts within the same asymmetric unit are listed below, sorted by their clash magnitude.

Atom-1	Atom-2	Interatomic distance (Å)	Clash overlap (Å)
1:C:18:DG:C2'	1:C:18:DG:C1'	1.79	1.53
1:D:23:DG:OP2	4:D:693:HOH:O	2.09	0.70
3:D:26:PNI:C7A	3:D:26:PNI:H3A	2.45	0.47
3:B:25:PNI:H2B	3:B:25:PNI:C0A	2.47	0.45
3:B:25:PNI:C2C	3:B:25:PNI:C7B	2.94	0.44
3:B:25:PNI:C7B	3:B:25:PNI:H2C	2.46	0.44
3:B:25:PNI:C0A	3:B:25:PNI:C2B	2.97	0.42
3:D:26:PNI:C7A	3:D:26:PNI:C3A	2.96	0.42
3:D:26:PNI:C7D	3:D:26:PNI:C3D	2.96	0.42
3:D:26:PNI:C7D	3:D:26:PNI:H3D	2.51	0.41

All (2) symmetry-related close contacts are listed below. The label for Atom-2 includes the symmetry operator and encoded unit-cell translations to be applied.

Atom-1	Atom-2	Interatomic distance (Å)	Clash overlap (Å)
4:B:679:HOH:O	4:B:682:HOH:O[3_655]	2.09	0.11
4:A:662:HOH:O	4:B:609:HOH:O[3_655]	2.16	0.04

5.3 Torsion angles [i](#)

5.3.1 Protein backbone [i](#)

There are no protein molecules in this entry.

5.3.2 Protein sidechains [i](#)

There are no protein molecules in this entry.

5.3.3 RNA [i](#)

There are no RNA molecules in this entry.

5.4 Non-standard residues in protein, DNA, RNA chains [i](#)

6 non-standard protein/DNA/RNA residues are modelled in this entry.

In the following table, the Counts columns list the number of bonds (or angles) for which Mogul statistics could be retrieved, the number of bonds (or angles) that are observed in the model and the number of bonds (or angles) that are defined in the Chemical Component Dictionary. The Link column lists molecule types, if any, to which the group is linked. The Z score for a bond length (or angle) is the number of standard deviations the observed value is removed from the expected value. A bond length (or angle) with $|Z| > 2$ is considered an outlier worth inspection. RMSZ is the root-mean-square of all Z scores of the bond lengths (or angles).

Mol	Type	Chain	Res	Link	Bond lengths			Bond angles		
					Counts	RMSZ	# Z > 2	Counts	RMSZ	# Z > 2
1	CBR	B	7[B]	1	18,18,22	5.80	11 (61%)	25,26,33	2.47	9 (36%)
1	CBR	D	19[D]	1	18,18,22	5.95	6 (33%)	25,26,33	2.81	7 (28%)
1	CBR	D	19[C]	1	18,18,22	4.62	4 (22%)	25,26,33	2.52	6 (24%)
1	CBR	B	7[A]	1	18,18,22	4.96	11 (61%)	25,26,33	2.30	6 (24%)
1	CBR	C	13	1	18,18,22	1.67	5 (27%)	25,26,33	0.91	2 (8%)
1	CBR	A	1	1	18,18,22	1.46	2 (11%)	25,26,33	0.94	2 (8%)

In the following table, the Chirals column lists the number of chiral outliers, the number of chiral centers analysed, the number of these observed in the model and the number defined in the Chemical Component Dictionary. Similar counts are reported in the Torsion and Rings columns. '-' means no outliers of that kind were identified.

Mol	Type	Chain	Res	Link	Chirals	Torsions	Rings
1	CBR	B	7[B]	1	-	1/6/18/22	0/2/2/2
1	CBR	D	19[D]	1	-	1/6/18/22	0/2/2/2
1	CBR	D	19[C]	1	-	0/6/18/22	0/2/2/2
1	CBR	B	7[A]	1	-	0/6/18/22	0/2/2/2
1	CBR	C	13	1	-	0/6/18/22	0/2/2/2
1	CBR	A	1	1	-	1/6/18/22	0/2/2/2

All (39) bond length outliers are listed below:

Mol	Chain	Res	Type	Atoms	Z	Observed(Å)	Ideal(Å)
1	D	19[D]	CBR	C2'-C3'	19.02	2.03	1.52
1	B	7[B]	CBR	C2'-C3'	18.49	2.01	1.52
1	D	19[C]	CBR	C2'-C3'	-17.20	1.07	1.52
1	B	7[A]	CBR	C2'-C3'	-16.50	1.09	1.52
1	D	19[D]	CBR	C3'-C4'	-11.24	1.22	1.53
1	B	7[B]	CBR	C3'-C4'	-10.73	1.23	1.53
1	D	19[D]	CBR	O3'-C3'	-7.84	1.26	1.43

Continued on next page...

Continued from previous page...

Mol	Chain	Res	Type	Atoms	Z	Observed(Å)	Ideal(Å)
1	B	7[A]	CBR	O5'-C5'	-7.59	1.10	1.42
1	B	7[B]	CBR	O5'-C5'	-7.59	1.10	1.42
1	D	19[C]	CBR	O5'-C5'	-6.43	1.15	1.42
1	D	19[D]	CBR	O5'-C5'	-6.43	1.15	1.42
1	B	7[A]	CBR	C5'-C4'	6.09	1.72	1.51
1	B	7[B]	CBR	C5'-C4'	6.09	1.72	1.51
1	D	19[C]	CBR	C5'-C4'	5.13	1.69	1.51
1	D	19[D]	CBR	C5'-C4'	5.13	1.69	1.51
1	B	7[A]	CBR	C3'-C4'	4.55	1.65	1.53
1	C	13	CBR	C6-C5	-3.60	1.27	1.34
1	C	13	CBR	C6-N1	3.43	1.43	1.38
1	B	7[A]	CBR	C2-N3	-3.18	1.29	1.36
1	B	7[B]	CBR	C2-N3	-3.18	1.29	1.36
1	A	1	CBR	C3'-C4'	-2.91	1.45	1.53
1	B	7[A]	CBR	C1'-N1	-2.85	1.40	1.48
1	B	7[B]	CBR	C1'-N1	-2.85	1.40	1.48
1	D	19[C]	CBR	C2-N3	-2.80	1.30	1.36
1	D	19[D]	CBR	C2-N3	-2.80	1.30	1.36
1	B	7[A]	CBR	C4-C5	-2.62	1.35	1.42
1	B	7[B]	CBR	C4-C5	-2.62	1.35	1.42
1	B	7[A]	CBR	O3'-C3'	2.34	1.48	1.43
1	B	7[A]	CBR	BR-C5	2.34	1.94	1.88
1	B	7[B]	CBR	BR-C5	2.34	1.94	1.88
1	A	1	CBR	C1'-N1	2.26	1.54	1.48
1	B	7[A]	CBR	C4-N4	2.21	1.39	1.34
1	B	7[B]	CBR	C4-N4	2.21	1.39	1.34
1	C	13	CBR	C4-N3	-2.21	1.30	1.34
1	C	13	CBR	C2-N3	-2.15	1.32	1.36
1	B	7[B]	CBR	O3'-C3'	-2.07	1.39	1.43
1	B	7[A]	CBR	O4'-C1'	-2.03	1.37	1.42
1	B	7[B]	CBR	O4'-C1'	-2.03	1.37	1.42
1	C	13	CBR	O4'-C1'	-2.01	1.37	1.42

All (32) bond angle outliers are listed below:

Mol	Chain	Res	Type	Atoms	Z	Observed(°)	Ideal(°)
1	D	19[D]	CBR	C2'-C3'-C4'	-8.77	84.49	102.76
1	D	19[C]	CBR	C2'-C3'-C4'	8.33	120.11	102.76
1	B	7[A]	CBR	C2'-C3'-C4'	6.85	117.04	102.76
1	B	7[B]	CBR	C2'-C3'-C4'	-6.30	89.64	102.76
1	D	19[C]	CBR	O4'-C4'-C3'	-5.72	92.32	105.67
1	B	7[A]	CBR	O4'-C4'-C3'	-5.63	92.53	105.67

Continued on next page...

Continued from previous page...

Mol	Chain	Res	Type	Atoms	Z	Observed(°)	Ideal(°)
1	B	7[B]	CBR	C3'-C2'-C1'	-5.21	89.49	102.54
1	D	19[D]	CBR	C3'-C2'-C1'	-5.03	89.94	102.54
1	D	19[D]	CBR	O4'-C4'-C3'	4.96	117.24	105.67
1	D	19[D]	CBR	C5'-C4'-C3'	4.74	126.78	114.81
1	D	19[D]	CBR	O3'-C3'-C4'	4.01	125.45	110.10
1	D	19[C]	CBR	C3'-C2'-C1'	-3.84	92.92	102.54
1	B	7[B]	CBR	O3'-C3'-C4'	3.76	124.50	110.10
1	B	7[B]	CBR	O4'-C4'-C3'	3.64	114.17	105.67
1	B	7[B]	CBR	O3'-C3'-C2'	-3.44	98.60	110.90
1	B	7[A]	CBR	O3'-C3'-C2'	3.29	122.66	110.90
1	B	7[B]	CBR	C5'-C4'-C3'	3.15	122.77	114.81
1	D	19[C]	CBR	O3'-C3'-C2'	3.05	121.82	110.90
1	B	7[A]	CBR	O5'-C5'-C4'	2.89	121.19	111.29
1	B	7[B]	CBR	O5'-C5'-C4'	2.89	121.19	111.29
1	A	1	CBR	C4-N3-C2	2.82	124.49	120.69
1	B	7[A]	CBR	C1'-N1-C2	2.77	122.60	117.74
1	B	7[B]	CBR	C1'-N1-C2	2.77	122.60	117.74
1	C	13	CBR	C4-N3-C2	2.59	124.19	120.69
1	B	7[A]	CBR	C1'-N1-C6	-2.32	116.77	120.77
1	B	7[B]	CBR	C1'-N1-C6	-2.32	116.77	120.77
1	C	13	CBR	C6-N1-C2	-2.31	117.67	120.87
1	D	19[C]	CBR	C1'-N1-C6	-2.22	116.94	120.77
1	D	19[D]	CBR	C1'-N1-C6	-2.22	116.94	120.77
1	A	1	CBR	BR-C5-C6	2.22	123.75	120.64
1	D	19[C]	CBR	O2-C2-N3	2.10	125.75	122.33
1	D	19[D]	CBR	O2-C2-N3	2.10	125.75	122.33

There are no chirality outliers.

All (3) torsion outliers are listed below:

Mol	Chain	Res	Type	Atoms
1	D	19[D]	CBR	C3'-C4'-C5'-O5'
1	B	7[B]	CBR	C3'-C4'-C5'-O5'
1	A	1	CBR	O4'-C1'-N1-C2

There are no ring outliers.

2 monomers are involved in 2 short contacts:

Mol	Chain	Res	Type	Clashes	Symm-Clashes
1	B	7[B]	CBR	1	0
1	D	19[D]	CBR	1	0

5.5 Carbohydrates [i](#)

There are no monosaccharides in this entry.

5.6 Ligand geometry [i](#)

Of 4 ligands modelled in this entry, 2 are monoatomic - leaving 2 for Mogul analysis.

In the following table, the Counts columns list the number of bonds (or angles) for which Mogul statistics could be retrieved, the number of bonds (or angles) that are observed in the model and the number of bonds (or angles) that are defined in the Chemical Component Dictionary. The Link column lists molecule types, if any, to which the group is linked. The Z score for a bond length (or angle) is the number of standard deviations the observed value is removed from the expected value. A bond length (or angle) with $|Z| > 2$ is considered an outlier worth inspection. RMSZ is the root-mean-square of all Z scores of the bond lengths (or angles).

Mol	Type	Chain	Res	Link	Bond lengths			Bond angles		
					Counts	RMSZ	# Z > 2	Counts	RMSZ	# Z > 2
3	PNI	D	26	-	64,64,64	3.73	31 (48%)	60,102,102	2.84	24 (40%)
3	PNI	B	25	-	64,64,64	3.46	40 (62%)	60,102,102	2.56	19 (31%)

In the following table, the Chirals column lists the number of chiral outliers, the number of chiral centers analysed, the number of these observed in the model and the number defined in the Chemical Component Dictionary. Similar counts are reported in the Torsion and Rings columns. '-' means no outliers of that kind were identified.

Mol	Type	Chain	Res	Link	Chirals	Torsions	Rings
3	PNI	D	26	-	-	16/16/72/72	0/4/12/12
3	PNI	B	25	-	-	16/16/72/72	0/4/12/12

All (71) bond length outliers are listed below:

Mol	Chain	Res	Type	Atoms	Z	Observed(Å)	Ideal(Å)
3	D	26	PNI	C9C-C0C	11.19	1.61	1.35
3	D	26	PNI	C3C-C4C	9.60	1.56	1.40
3	B	25	PNI	C9D-NPD	-8.91	1.18	1.36
3	B	25	PNI	C3B-C4B	8.65	1.54	1.40
3	D	26	PNI	C9B-NPB	-8.04	1.20	1.36
3	B	25	PNI	C9D-C0D	7.78	1.53	1.35
3	D	26	PNI	C2C-C1C	7.47	1.52	1.40
3	D	26	PNI	C1D-ND	7.01	1.45	1.34
3	D	26	PNI	C4A-NA	6.81	1.45	1.34
3	D	26	PNI	C9C-NPC	-6.62	1.22	1.36

Continued on next page...

Continued from previous page...

Mol	Chain	Res	Type	Atoms	Z	Observed(Å)	Ideal(Å)
3	B	25	PNI	C8D-NPD	-6.60	1.22	1.36
3	D	26	PNI	C7C-C6C	-6.49	1.29	1.43
3	B	25	PNI	C1B-NB	6.28	1.44	1.34
3	D	26	PNI	C4C-C5C	-6.09	1.29	1.47
3	B	25	PNI	C5A-C6A	5.67	1.56	1.39
3	D	26	PNI	C1C-C5B	-5.43	1.31	1.47
3	B	25	PNI	C2D-C1D	5.40	1.49	1.40
3	D	26	PNI	C4A-C5A	-5.37	1.31	1.47
3	D	26	PNI	C9B-C0B	5.28	1.47	1.35
3	B	25	PNI	C4C-NC	5.27	1.43	1.34
3	B	25	PNI	C1B-C5A	-5.23	1.31	1.47
3	B	25	PNI	C3C-C4C	5.22	1.49	1.40
3	B	25	PNI	C4B-C5B	-5.14	1.32	1.47
3	D	26	PNI	C8B-NPB	4.69	1.45	1.36
3	D	26	PNI	C2A-C1A	4.46	1.47	1.40
3	D	26	PNI	C5A-C6A	4.33	1.52	1.39
3	D	26	PNI	C0D-C6D	-4.16	1.34	1.43
3	B	25	PNI	C4C-C5C	-4.14	1.35	1.47
3	D	26	PNI	C7B-C6B	-4.12	1.34	1.43
3	B	25	PNI	C8C-C7C	4.01	1.44	1.35
3	B	25	PNI	C0C-C6C	-3.93	1.35	1.43
3	B	25	PNI	C7D-C6D	-3.91	1.35	1.43
3	B	25	PNI	C4B-NB	3.65	1.40	1.34
3	B	25	PNI	C2B-C1B	3.57	1.46	1.40
3	B	25	PNI	C3D-C4D	3.54	1.46	1.40
3	D	26	PNI	C5D-C6D	3.48	1.50	1.39
3	D	26	PNI	C5C-C6C	3.46	1.50	1.39
3	B	25	PNI	C1C-NC	3.42	1.40	1.34
3	D	26	PNI	C1C-NC	3.31	1.40	1.34
3	B	25	PNI	C7A-C6A	-3.29	1.36	1.43
3	D	26	PNI	C9D-NPD	-3.29	1.29	1.36
3	D	26	PNI	C1D-C5C	-3.22	1.37	1.47
3	B	25	PNI	C1C-C5B	-3.19	1.38	1.47
3	D	26	PNI	C4D-C5D	-3.16	1.38	1.47
3	D	26	PNI	C3D-C4D	3.13	1.45	1.40
3	B	25	PNI	C5C-C6C	3.12	1.49	1.39
3	B	25	PNI	C9B-NPB	-3.07	1.29	1.36
3	B	25	PNI	C8B-NPB	3.07	1.42	1.36
3	D	26	PNI	C2D-C1D	2.96	1.45	1.40
3	B	25	PNI	CMB-NPB	2.94	1.54	1.46
3	B	25	PNI	C5B-C6B	2.93	1.48	1.39
3	B	25	PNI	C3A-C4A	2.87	1.44	1.40

Continued on next page...

Continued from previous page...

Mol	Chain	Res	Type	Atoms	Z	Observed(Å)	Ideal(Å)
3	B	25	PNI	C4A-C5A	-2.83	1.39	1.47
3	B	25	PNI	C0B-C6B	-2.80	1.37	1.43
3	B	25	PNI	C5D-C6D	2.73	1.47	1.39
3	B	25	PNI	C1D-C5C	-2.72	1.39	1.47
3	D	26	PNI	C9D-C0D	2.68	1.41	1.35
3	D	26	PNI	C4B-C5B	-2.63	1.39	1.47
3	B	25	PNI	CMC-NPC	2.60	1.53	1.46
3	B	25	PNI	C4D-C5D	-2.58	1.39	1.47
3	D	26	PNI	C5B-C6B	2.55	1.47	1.39
3	B	25	PNI	C1A-NA	2.47	1.38	1.34
3	B	25	PNI	C1A-C5D	-2.33	1.40	1.47
3	D	26	PNI	C8C-NPC	2.31	1.40	1.36
3	B	25	PNI	C8C-NPC	-2.28	1.31	1.36
3	B	25	PNI	C4D-ND	2.21	1.38	1.34
3	D	26	PNI	C1A-C5D	-2.19	1.41	1.47
3	D	26	PNI	C8B-C7B	2.19	1.40	1.35
3	B	25	PNI	C4A-NA	2.16	1.38	1.34
3	B	25	PNI	CMD-NPD	2.12	1.52	1.46
3	B	25	PNI	C8A-NPA	2.11	1.40	1.36

All (43) bond angle outliers are listed below:

Mol	Chain	Res	Type	Atoms	Z	Observed(°)	Ideal(°)
3	D	26	PNI	C7B-C8B-NPB	-9.58	110.34	121.61
3	B	25	PNI	CMD-NPD-C9D	-9.17	110.03	120.17
3	B	25	PNI	CMD-NPD-C8D	8.41	129.48	120.17
3	D	26	PNI	CMB-NPB-C8B	-7.82	111.52	120.17
3	D	26	PNI	C2C-C1C-NC	-7.03	102.61	109.63
3	D	26	PNI	C9B-NPB-C8B	5.95	127.40	119.26
3	B	25	PNI	C9D-C0D-C6D	-5.91	113.29	121.45
3	D	26	PNI	C9C-C0C-C6C	-5.64	113.66	121.45
3	D	26	PNI	C0C-C6C-C5C	-5.46	113.76	122.16
3	B	25	PNI	C7D-C8D-NPD	5.40	127.96	121.61
3	D	26	PNI	C9B-C0B-C6B	-4.35	115.44	121.45
3	D	26	PNI	C8B-C7B-C6B	4.23	127.30	121.45
3	D	26	PNI	C1B-C5A-C4A	3.97	126.15	116.57
3	B	25	PNI	C1B-C5A-C4A	3.87	125.91	116.57
3	B	25	PNI	C1C-C5B-C6B	-3.85	115.29	121.75
3	B	25	PNI	C8D-C7D-C6D	-3.61	116.47	121.45
3	B	25	PNI	CMB-NPB-C9B	-3.57	116.22	120.17
3	B	25	PNI	C1B-C5A-C6A	-3.45	115.97	121.75
3	D	26	PNI	C1B-C5A-C6A	-3.08	116.58	121.75

Continued on next page...

Continued from previous page...

Mol	Chain	Res	Type	Atoms	Z	Observed(°)	Ideal(°)
3	D	26	PNI	C9A-C0A-C6A	-2.98	117.34	121.45
3	B	25	PNI	CMB-NPB-C8B	2.91	123.39	120.17
3	D	26	PNI	C7C-C6C-C5C	2.90	126.63	122.16
3	D	26	PNI	C4B-C5B-C6B	-2.90	116.89	121.75
3	D	26	PNI	C4A-C5A-C6A	-2.88	116.92	121.75
3	B	25	PNI	C8C-C7C-C6C	-2.73	117.68	121.45
3	B	25	PNI	C1C-C5B-C4B	2.72	123.14	116.57
3	B	25	PNI	CMA-NPA-C8A	2.64	123.10	120.17
3	B	25	PNI	C7C-C6C-C5C	-2.64	118.09	122.16
3	D	26	PNI	C0B-C6B-C5B	-2.62	118.13	122.16
3	B	25	PNI	C7B-C8B-NPB	-2.59	118.56	121.61
3	D	26	PNI	C2A-C1A-NA	2.53	112.16	109.63
3	D	26	PNI	C1C-C5B-C4B	2.43	122.42	116.57
3	B	25	PNI	C4A-C5A-C6A	-2.36	117.79	121.75
3	D	26	PNI	C9D-C0D-C6D	-2.32	118.24	121.45
3	D	26	PNI	C8C-C7C-C6C	2.27	124.59	121.45
3	D	26	PNI	CMD-NPD-C8D	-2.26	117.67	120.17
3	D	26	PNI	C1D-C5C-C6C	-2.26	117.96	121.75
3	B	25	PNI	C4D-C5D-C1A	2.25	122.01	116.57
3	B	25	PNI	C1A-C5D-C6D	-2.19	118.08	121.75
3	D	26	PNI	C0C-C9C-NPC	-2.14	119.10	121.61
3	D	26	PNI	C3C-C4C-NC	-2.10	107.54	109.63
3	B	25	PNI	C0A-C6A-C5A	-2.07	118.97	122.16
3	D	26	PNI	C8D-C7D-C6D	-2.02	118.66	121.45

There are no chirality outliers.

All (32) torsion outliers are listed below:

Mol	Chain	Res	Type	Atoms
3	B	25	PNI	C4A-C5A-C6A-C0A
3	B	25	PNI	C1B-C5A-C6A-C7A
3	B	25	PNI	C1B-C5A-C6A-C0A
3	B	25	PNI	C4B-C5B-C6B-C7B
3	B	25	PNI	C4B-C5B-C6B-C0B
3	B	25	PNI	C1C-C5B-C6B-C7B
3	B	25	PNI	C1C-C5B-C6B-C0B
3	B	25	PNI	C4C-C5C-C6C-C7C
3	B	25	PNI	C4C-C5C-C6C-C0C
3	B	25	PNI	C1D-C5C-C6C-C7C
3	B	25	PNI	C1A-C5D-C6D-C0D
3	B	25	PNI	C4D-C5D-C6D-C7D
3	B	25	PNI	C4D-C5D-C6D-C0D

Continued on next page...

Continued from previous page...

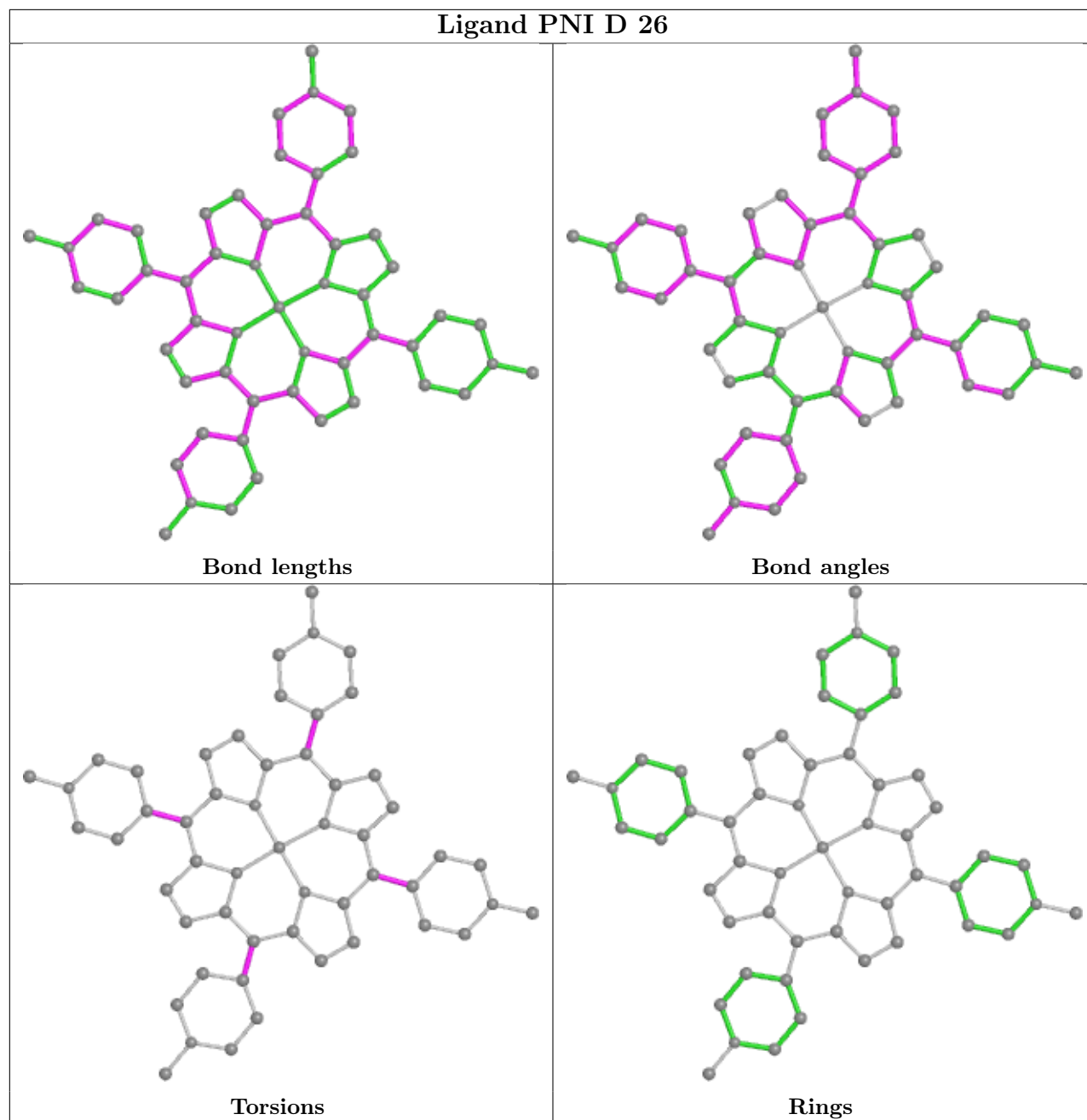
Mol	Chain	Res	Type	Atoms
3	D	26	PNI	C4A-C5A-C6A-C7A
3	D	26	PNI	C4A-C5A-C6A-C0A
3	D	26	PNI	C1B-C5A-C6A-C7A
3	D	26	PNI	C4B-C5B-C6B-C7B
3	D	26	PNI	C4B-C5B-C6B-C0B
3	D	26	PNI	C1C-C5B-C6B-C7B
3	D	26	PNI	C1C-C5B-C6B-C0B
3	D	26	PNI	C4C-C5C-C6C-C0C
3	D	26	PNI	C1D-C5C-C6C-C7C
3	D	26	PNI	C1A-C5D-C6D-C7D
3	D	26	PNI	C1A-C5D-C6D-C0D
3	D	26	PNI	C4D-C5D-C6D-C7D
3	D	26	PNI	C4D-C5D-C6D-C0D
3	B	25	PNI	C4A-C5A-C6A-C7A
3	B	25	PNI	C1D-C5C-C6C-C0C
3	B	25	PNI	C1A-C5D-C6D-C7D
3	D	26	PNI	C1B-C5A-C6A-C0A
3	D	26	PNI	C4C-C5C-C6C-C7C
3	D	26	PNI	C1D-C5C-C6C-C0C

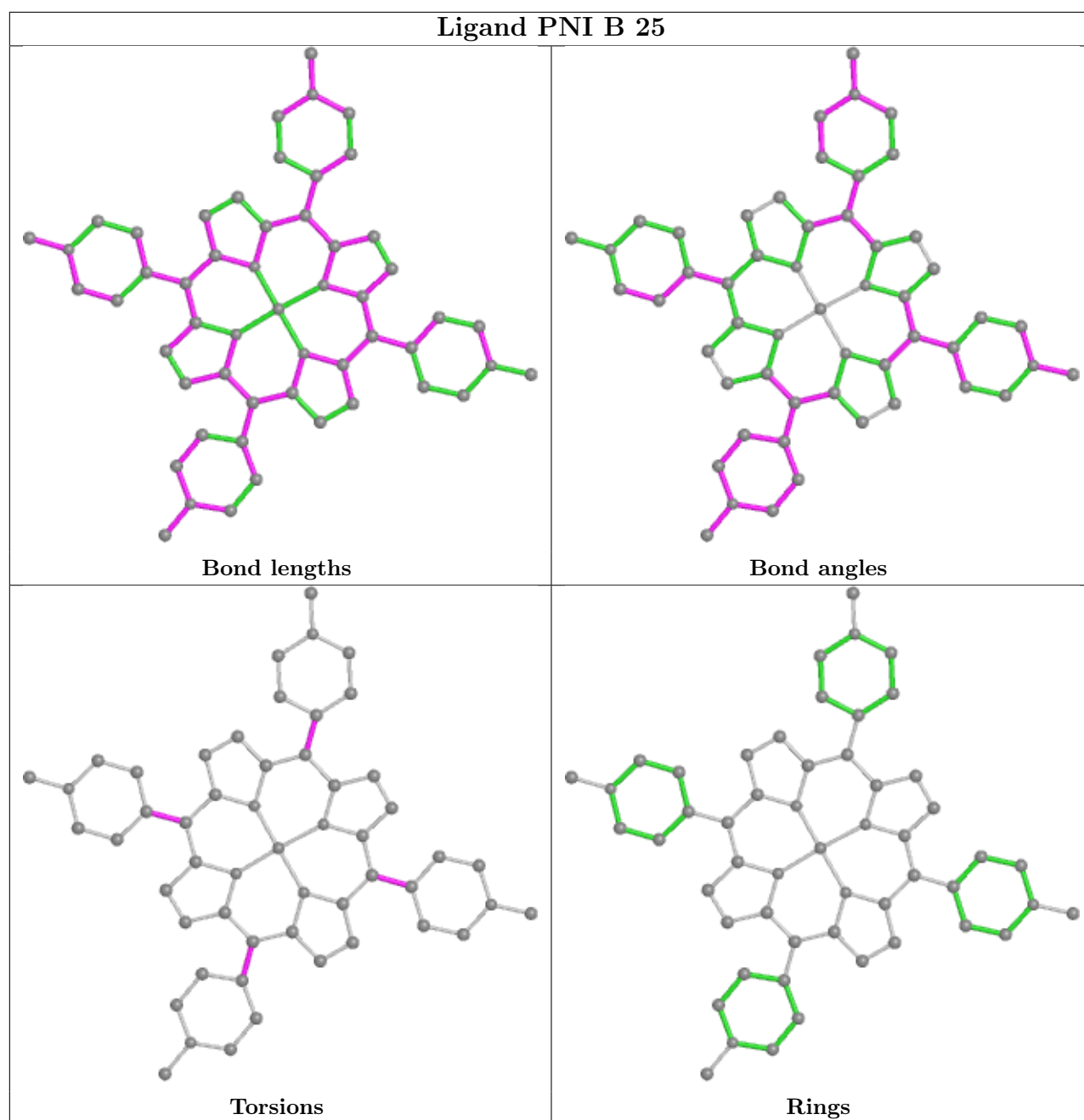
There are no ring outliers.

2 monomers are involved in 8 short contacts:

Mol	Chain	Res	Type	Clashes	Symm-Clashes
3	D	26	PNI	4	0
3	B	25	PNI	4	0

The following is a two-dimensional graphical depiction of Mogul quality analysis of bond lengths, bond angles, torsion angles, and ring geometry for all instances of the Ligand of Interest. In addition, ligands with molecular weight > 250 and outliers as shown on the validation Tables will also be included. For torsion angles, if less than 5% of the Mogul distribution of torsion angles is within 10 degrees of the torsion angle in question, then that torsion angle is considered an outlier. Any bond that is central to one or more torsion angles identified as an outlier by Mogul will be highlighted in the graph. For rings, the root-mean-square deviation (RMSD) between the ring in question and similar rings identified by Mogul is calculated over all ring torsion angles. If the average RMSD is greater than 60 degrees and the minimal RMSD between the ring in question and any Mogul-identified rings is also greater than 60 degrees, then that ring is considered an outlier. The outliers are highlighted in purple. The color gray indicates Mogul did not find sufficient equivalents in the CSD to analyse the geometry.





5.7 Other polymers [i](#)

There are no such residues in this entry.

5.8 Polymer linkage issues [i](#)

There are no chain breaks in this entry.

6 Fit of model and data [i](#)

6.1 Protein, DNA and RNA chains [i](#)

In the following table, the column labelled '#RSRZ > 2' contains the number (and percentage) of RSRZ outliers, followed by percent RSRZ outliers for the chain as percentile scores relative to all X-ray entries and entries of similar resolution. The OWAB column contains the minimum, median, 95th percentile and maximum values of the occupancy-weighted average B-factor per residue. The column labelled 'Q < 0.9' lists the number of (and percentage) of residues with an average occupancy less than 0.9.

Mol	Chain	Analysed	<RSRZ>	#RSRZ>2	OWAB(Å ²)	Q<0.9
1	A	5/6 (83%)	-0.41	0 100 100	9, 9, 12, 13	0
1	B	5/6 (83%)	-0.50	0 100 100	8, 9, 10, 10	0
1	C	5/6 (83%)	-0.47	0 100 100	9, 9, 12, 13	0
1	D	5/6 (83%)	-0.43	0 100 100	8, 9, 10, 10	0
All	All	20/24 (83%)	-0.45	0 100 100	8, 9, 13, 13	0

There are no RSRZ outliers to report.

6.2 Non-standard residues in protein, DNA, RNA chains [i](#)

In the following table, the Atoms column lists the number of modelled atoms in the group and the number defined in the chemical component dictionary. The B-factors column lists the minimum, median, 95th percentile and maximum values of B factors of atoms in the group. The column labelled 'Q < 0.9' lists the number of atoms with occupancy less than 0.9.

Mol	Type	Chain	Res	Atoms	RSCC	RSR	B-factors(Å ²)	Q<0.9
1	CBR	A	1	17/21	0.99	0.07	7,9,12,16	0
1	CBR	B	7[A]	17/21	0.99	0.07	8,11,17,23	3
1	CBR	B	7[B]	17/21	0.99	0.07	8,11,17,23	3
1	CBR	C	13	17/21	0.99	0.07	7,9,12,15	0
1	CBR	D	19[C]	17/21	0.99	0.07	8,11,19,20	3
1	CBR	D	19[D]	17/21	0.99	0.07	8,11,19,20	3

6.3 Carbohydrates [i](#)

There are no monosaccharides in this entry.

6.4 Ligands

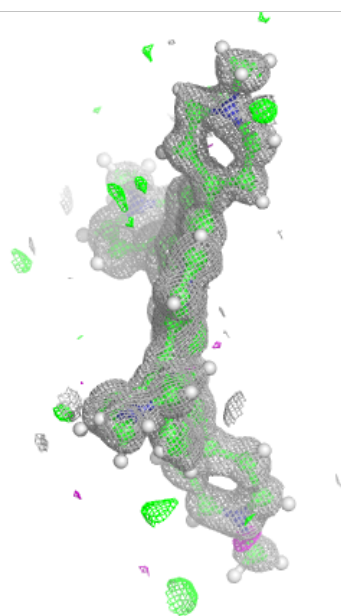
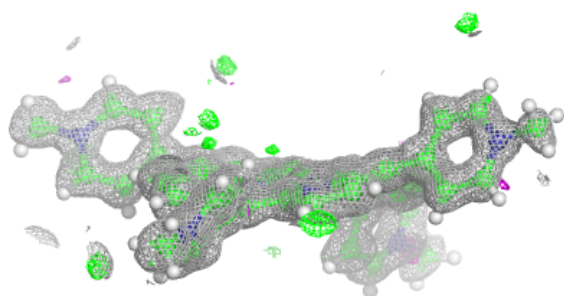
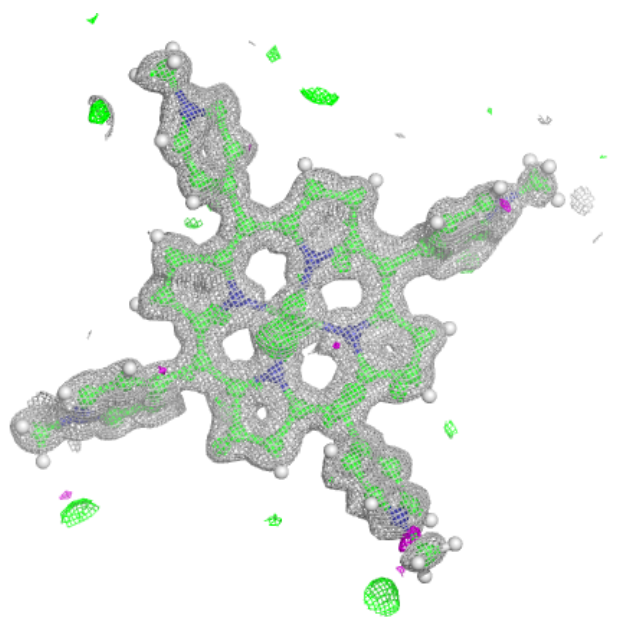
In the following table, the Atoms column lists the number of modelled atoms in the group and the number defined in the chemical component dictionary. The B-factors column lists the minimum, median, 95th percentile and maximum values of B factors of atoms in the group. The column labelled 'Q< 0.9' lists the number of atoms with occupancy less than 0.9.

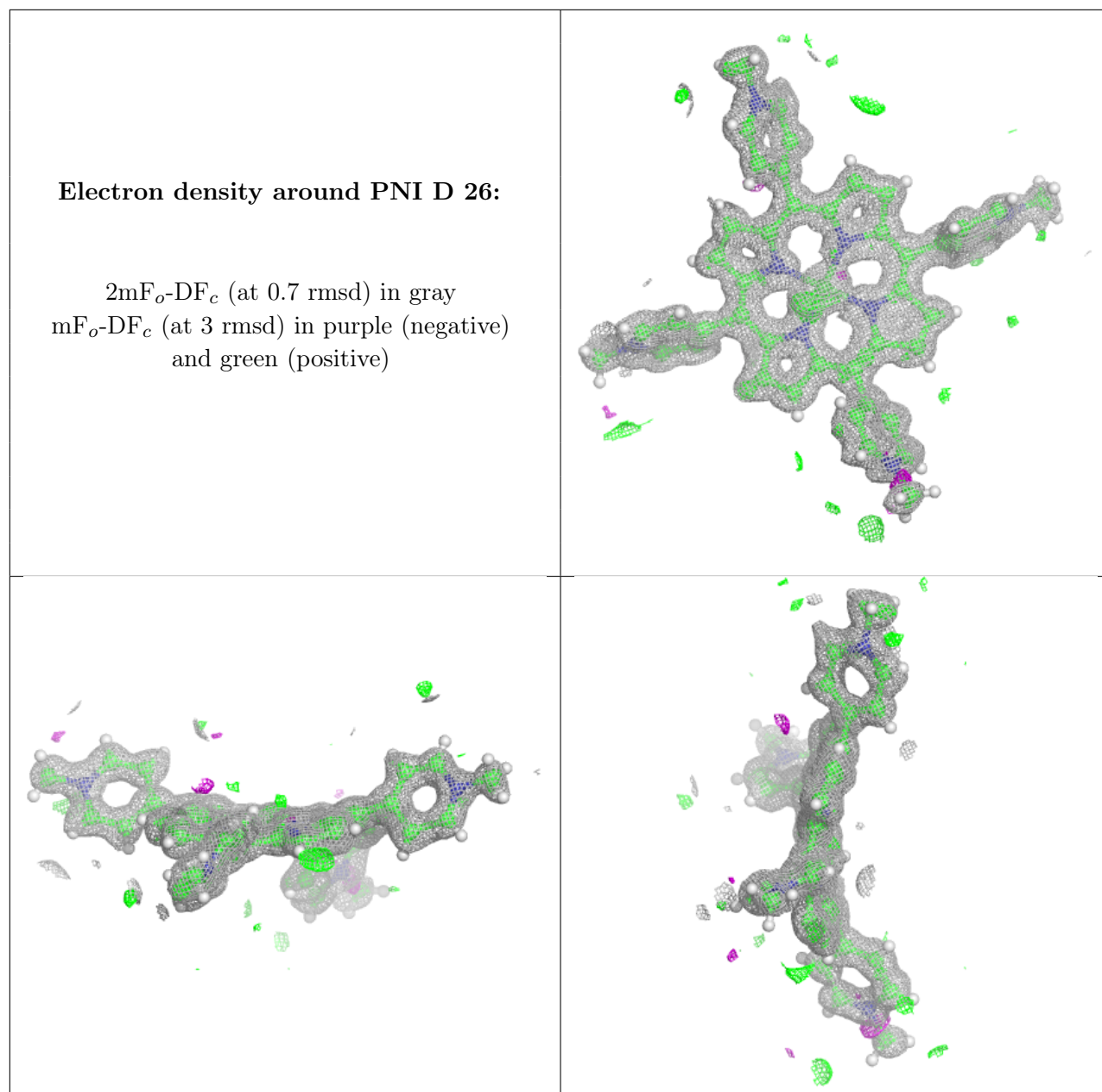
Mol	Type	Chain	Res	Atoms	RSCC	RSR	B-factors(Å ²)	Q<0.9
3	PNI	B	25	53/53	0.99	0.07	7,11,20,22	0
3	PNI	D	26	53/53	0.99	0.07	7,11,21,23	0
2	MG	A	27	1/1	1.00	0.03	10,10,10,10	0
2	MG	C	28	1/1	1.00	0.06	10,10,10,10	0

The following is a graphical depiction of the model fit to experimental electron density of all instances of the Ligand of Interest. In addition, ligands with molecular weight > 250 and outliers as shown on the geometry validation Tables will also be included. Each fit is shown from different orientation to approximate a three-dimensional view.

Electron density around PNI B 25:

$2mF_o-DF_c$ (at 0.7 rmsd) in gray
 mF_o-DF_c (at 3 rmsd) in purple (negative)
and green (positive)





6.5 Other polymers [i](#)

There are no such residues in this entry.