



# Full wwPDB X-ray Structure Validation Report ⓘ

Jan 28, 2024 – 12:14 PM EST

PDB ID : 1EK6  
Title : STRUCTURE OF HUMAN UDP-GALACTOSE 4-EPIMERASE COM-  
PLEXED WITH NADH AND UDP-GLUCOSE  
Authors : Thoden, J.B.; Wohlers, T.M.; Fridovich-Keil, J.L.; Holden, H.M.  
Deposited on : 2000-03-06  
Resolution : 1.50 Å(reported)

This is a Full wwPDB X-ray Structure Validation Report for a publicly released PDB entry.

We welcome your comments at [validation@mail.wwpdb.org](mailto:validation@mail.wwpdb.org)

A user guide is available at

<https://www.wwpdb.org/validation/2017/XrayValidationReportHelp>

with specific help available everywhere you see the ⓘ symbol.

The types of validation reports are described at

<http://www.wwpdb.org/validation/2017/FAQs#types>.

---

The following versions of software and data (see [references ⓘ](#)) were used in the production of this report:

MolProbity : 4.02b-467  
Mogul : 1.8.5 (274361), CSD as541be (2020)  
Xtriage (Phenix) : 1.13  
EDS : 2.36  
buster-report : 1.1.7 (2018)  
Percentile statistics : 20191225.v01 (using entries in the PDB archive December 25th 2019)  
Refmac : 5.8.0158  
CCP4 : 7.0.044 (Gargrove)  
Ideal geometry (proteins) : Engh & Huber (2001)  
Ideal geometry (DNA, RNA) : Parkinson et al. (1996)  
Validation Pipeline (wwPDB-VP) : 2.36

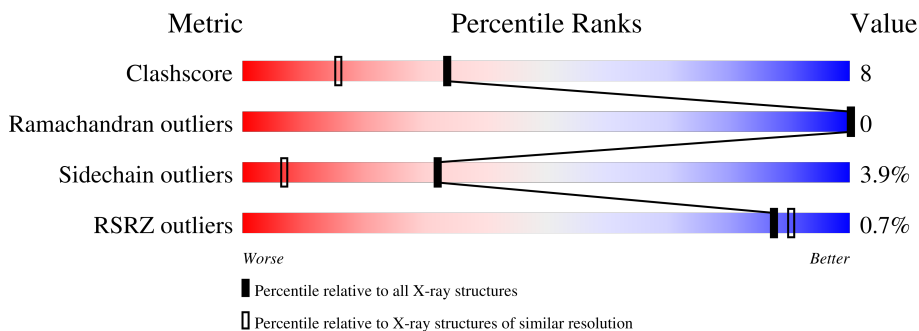
# 1 Overall quality at a glance

The following experimental techniques were used to determine the structure:

*X-RAY DIFFRACTION*

The reported resolution of this entry is 1.50 Å.

Percentile scores (ranging between 0-100) for global validation metrics of the entry are shown in the following graphic. The table shows the number of entries on which the scores are based.



Metric	Whole archive (#Entries)	Similar resolution (#Entries, resolution range(Å))
Clashscore	141614	3144 (1.50-1.50)
Ramachandran outliers	138981	3066 (1.50-1.50)
Sidechain outliers	138945	3064 (1.50-1.50)
RSRZ outliers	127900	2884 (1.50-1.50)

The table below summarises the geometric issues observed across the polymeric chains and their fit to the electron density. The red, orange, yellow and green segments of the lower bar indicate the fraction of residues that contain outliers for  $\geq 3$ , 2, 1 and 0 types of geometric quality criteria respectively. A grey segment represents the fraction of residues that are not modelled. The numeric value for each fraction is indicated below the corresponding segment, with a dot representing fractions  $\leq 5\%$ . The upper red bar (where present) indicates the fraction of residues that have poor fit to the electron density. The numeric value is given above the bar.

Mol	Chain	Length	Quality of chain
1	A	348	 % 78% 17% . ..
1	B	348	 74% 24% ..

## 2 Entry composition

There are 6 unique types of molecules in this entry. The entry contains 6489 atoms, of which 0 are hydrogens and 0 are deuteriums.

In the tables below, the ZeroOcc column contains the number of atoms modelled with zero occupancy, the AltConf column contains the number of residues with at least one atom in alternate conformation and the Trace column contains the number of residues modelled with at most 2 atoms.

- Molecule 1 is a protein called UDP-GALACTOSE 4-EPIMERASE.

Mol	Chain	Residues	Atoms					ZeroOcc	AltConf	Trace
			Total	C	N	O	S			
1	A	346	2709	1718	466	506	19	0	8	0
1	B	345	2704	1715	466	506	17	0	9	0

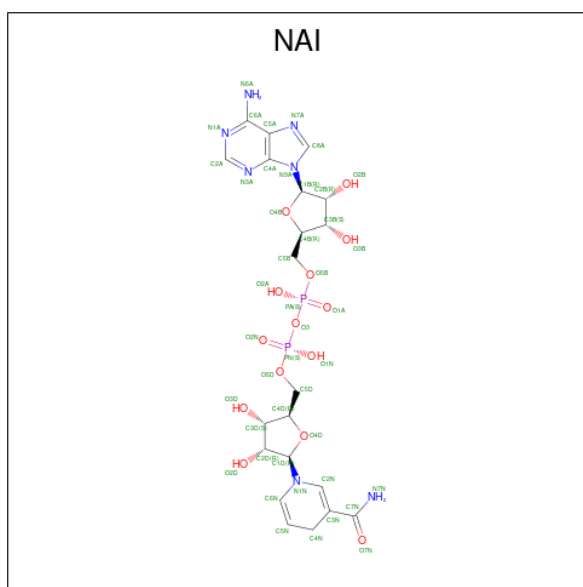
There are 2 discrepancies between the modelled and reference sequences:

Chain	Residue	Modelled	Actual	Comment	Reference
A	180	ALA	VAL	SEE REMARK 999	UNP Q14376
B	180	ALA	VAL	SEE REMARK 999	UNP Q14376

- Molecule 2 is MAGNESIUM ION (three-letter code: MG) (formula: Mg).

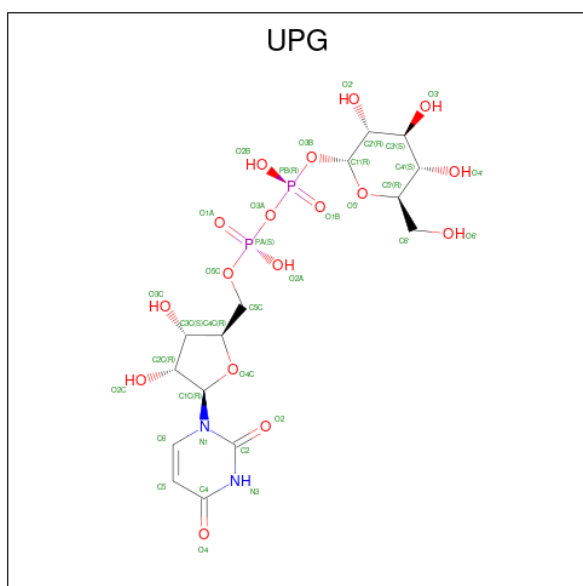
Mol	Chain	Residues	Atoms		ZeroOcc	AltConf
2	A	1	Total	Mg	0	0
			1	1		
2	B	1	Total	Mg	0	0
			1	1		

- Molecule 3 is 1,4-DIHYDRONICOTINAMIDE ADENINE DINUCLEOTIDE (three-letter code: NAI) (formula: C<sub>21</sub>H<sub>29</sub>N<sub>7</sub>O<sub>14</sub>P<sub>2</sub>).



Mol	Chain	Residues	Atoms				ZeroOcc	AltConf	
			Total	C	N	O			P
3	A	1	Total	C	N	O	P	0	0
			44	21	7	14	2		
3	B	1	Total	C	N	O	P	0	0
			44	21	7	14	2		

- Molecule 4 is URIDINE-5'-DIPHOSPHATE-GLUCOSE (three-letter code: UPG) (formula:  $C_{15}H_{24}N_2O_{17}P_2$ ).



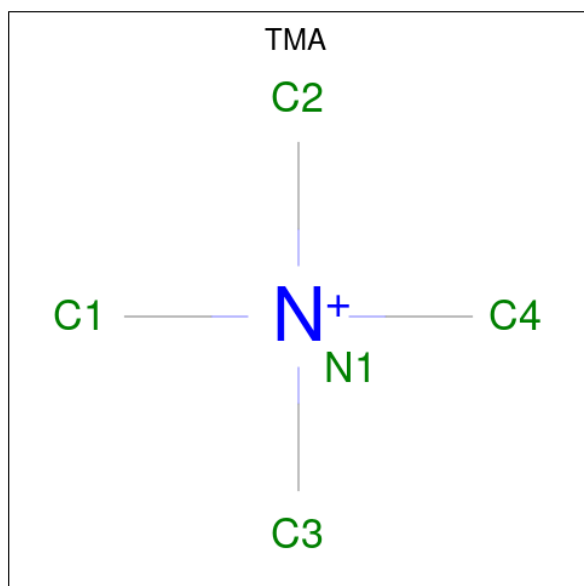
Mol	Chain	Residues	Atoms				ZeroOcc	AltConf	
			Total	C	N	O			P
4	A	1	Total	C	N	O	P	0	0
			36	15	2	17	2		

*Continued on next page...*

Continued from previous page...

Mol	Chain	Residues	Atoms				ZeroOcc	AltConf	
			Total	C	N	O			P
4	B	1	36	15	2	17	2	0	0

- Molecule 5 is TETRAMETHYLAMMONIUM ION (three-letter code: TMA) (formula:  $C_4H_{12}N$ ).



Mol	Chain	Residues	Atoms			ZeroOcc	AltConf
			Total	C	N		
5	A	1	5	4	1	0	0
5	A	1	5	4	1	0	0
5	B	1	5	4	1	0	0

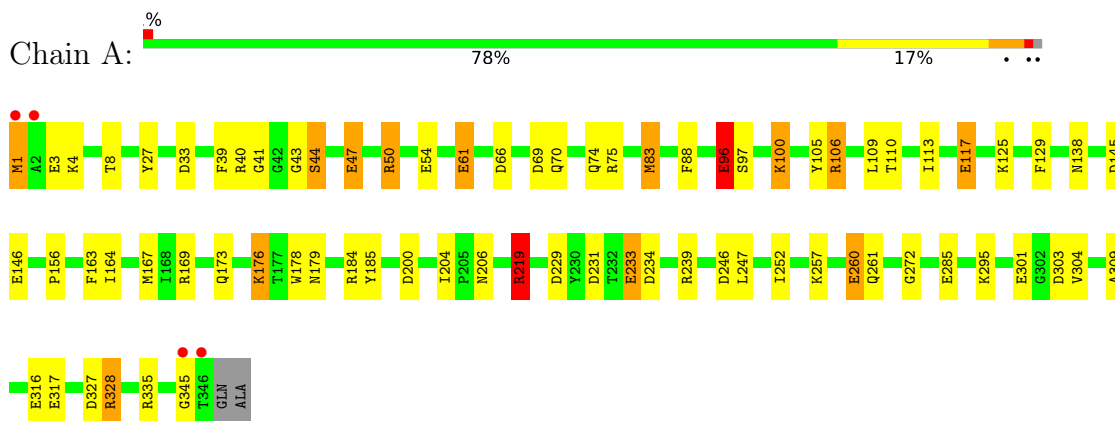
- Molecule 6 is water.

Mol	Chain	Residues	Atoms		ZeroOcc	AltConf
			Total	O		
6	A	490	490	490	0	0
6	B	409	409	409	0	0

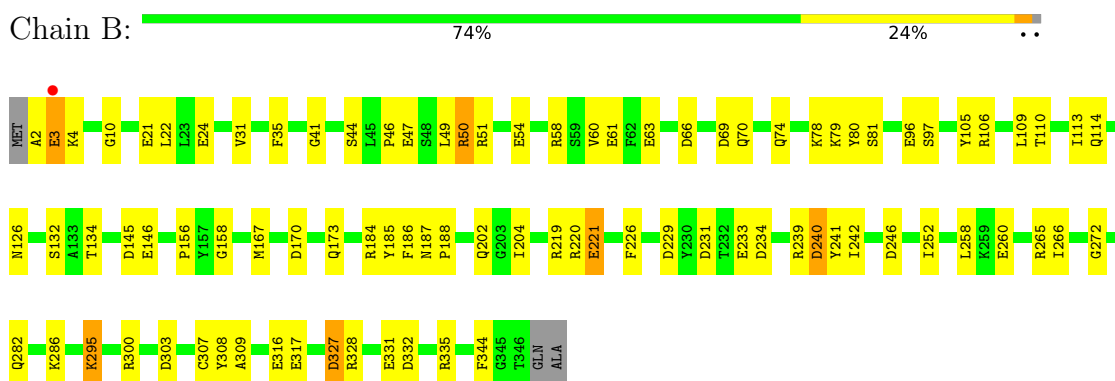
### 3 Residue-property plots [i](#)

These plots are drawn for all protein, RNA, DNA and oligosaccharide chains in the entry. The first graphic for a chain summarises the proportions of the various outlier classes displayed in the second graphic. The second graphic shows the sequence view annotated by issues in geometry and electron density. Residues are color-coded according to the number of geometric quality criteria for which they contain at least one outlier: green = 0, yellow = 1, orange = 2 and red = 3 or more. A red dot above a residue indicates a poor fit to the electron density ( $RSRZ > 2$ ). Stretches of 2 or more consecutive residues without any outlier are shown as a green connector. Residues present in the sample, but not in the model, are shown in grey.

- Molecule 1: UDP-GALACTOSE 4-EPIMERASE



- Molecule 1: UDP-GALACTOSE 4-EPIMERASE



## 4 Data and refinement statistics

Property	Value	Source
Space group	P 21 21 21	Depositor
Cell constants a, b, c, $\alpha$ , $\beta$ , $\gamma$	74.70Å 86.90Å 95.30Å 90.00° 90.00° 90.00°	Depositor
Resolution (Å)	30.00 – 1.50 29.84 – 1.50	Depositor EDS
% Data completeness (in resolution range)	96.1 (30.00-1.50) 96.1 (29.84-1.50)	Depositor EDS
$R_{merge}$	0.05	Depositor
$R_{sym}$	(Not available)	Depositor
$\langle I/\sigma(I) \rangle$ <sup>1</sup>	0.78 (at 1.50Å)	Xtrriage
Refinement program	TNT 5E	Depositor
R, $R_{free}$	0.168 , 0.198 0.161 , (Not available)	Depositor DCC
$R_{free}$ test set	No test flags present.	wwPDB-VP
Wilson B-factor (Å <sup>2</sup> )	13.1	Xtrriage
Anisotropy	0.348	Xtrriage
Bulk solvent $k_{sol}$ (e/Å <sup>3</sup> ), $B_{sol}$ (Å <sup>2</sup> )	0.33 , 96.2	EDS
L-test for twinning <sup>2</sup>	$\langle  L  \rangle = 0.48$ , $\langle L^2 \rangle = 0.32$	Xtrriage
Estimated twinning fraction	No twinning to report.	Xtrriage
$F_o, F_c$ correlation	0.97	EDS
Total number of atoms	6489	wwPDB-VP
Average B, all atoms (Å <sup>2</sup> )	21.0	wwPDB-VP

Xtrriage's analysis on translational NCS is as follows: *The largest off-origin peak in the Patterson function is 5.06% of the height of the origin peak. No significant pseudotranslation is detected.*

<sup>1</sup>Intensities estimated from amplitudes.

<sup>2</sup>Theoretical values of  $\langle |L| \rangle$ ,  $\langle L^2 \rangle$  for acentric reflections are 0.5, 0.333 respectively for untwinned datasets, and 0.375, 0.2 for perfectly twinned datasets.

## 5 Model quality i

### 5.1 Standard geometry i

Bond lengths and bond angles in the following residue types are not validated in this section: NAI, MG, TMA, UPG

The Z score for a bond length (or angle) is the number of standard deviations the observed value is removed from the expected value. A bond length (or angle) with  $|Z| > 5$  is considered an outlier worth inspection. RMSZ is the root-mean-square of all Z scores of the bond lengths (or angles).

Mol	Chain	Bond lengths		Bond angles	
		RMSZ	# Z  >5	RMSZ	# Z  >5
1	A	0.87	15/2798 (0.5%)	1.25	34/3782 (0.9%)
1	B	0.90	16/2797 (0.6%)	1.25	34/3782 (0.9%)
All	All	0.88	31/5595 (0.6%)	1.25	68/7564 (0.9%)

All (31) bond length outliers are listed below:

Mol	Chain	Res	Type	Atoms	Z	Observed(Å)	Ideal(Å)
1	B	260	GLU	CD-OE2	7.15	1.33	1.25
1	A	316	GLU	CD-OE2	6.74	1.33	1.25
1	B	317	GLU	CD-OE2	6.58	1.32	1.25
1	A	285	GLU	CD-OE2	6.52	1.32	1.25
1	B	96	GLU	CD-OE2	6.39	1.32	1.25
1	A	117	GLU	CD-OE2	6.06	1.32	1.25
1	B	331	GLU	CD-OE2	6.02	1.32	1.25
1	B	146	GLU	CD-OE2	5.89	1.32	1.25
1	A	260	GLU	CD-OE2	5.84	1.32	1.25
1	A	96[A]	GLU	CD-OE2	5.72	1.31	1.25
1	A	96[B]	GLU	CD-OE2	5.72	1.31	1.25
1	A	146	GLU	CD-OE2	5.68	1.31	1.25
1	A	317	GLU	CD-OE2	5.66	1.31	1.25
1	B	61	GLU	CD-OE2	5.60	1.31	1.25
1	B	21	GLU	CD-OE2	5.57	1.31	1.25
1	B	63[A]	GLU	CD-OE2	5.54	1.31	1.25
1	B	63[B]	GLU	CD-OE2	5.54	1.31	1.25
1	B	221[A]	GLU	CD-OE2	5.41	1.31	1.25
1	B	221[B]	GLU	CD-OE2	5.41	1.31	1.25
1	A	233	GLU	CD-OE2	5.36	1.31	1.25
1	A	47	GLU	CD-OE2	5.31	1.31	1.25
1	B	3[A]	GLU	CD-OE2	5.25	1.31	1.25
1	B	3[B]	GLU	CD-OE2	5.25	1.31	1.25
1	B	54	GLU	CD-OE2	5.25	1.31	1.25

*Continued on next page...*



*Continued from previous page...*

Mol	Chain	Res	Type	Atoms	Z	Observed(Å)	Ideal(Å)
1	A	301	GLU	CD-OE2	5.23	1.31	1.25
1	A	54	GLU	CD-OE2	5.10	1.31	1.25
1	A	61[A]	GLU	CD-OE2	5.09	1.31	1.25
1	A	61[B]	GLU	CD-OE2	5.09	1.31	1.25
1	B	24	GLU	CD-OE2	5.04	1.31	1.25
1	B	233	GLU	CD-OE2	5.04	1.31	1.25
1	A	3	GLU	CD-OE2	5.03	1.31	1.25

All (68) bond angle outliers are listed below:

Mol	Chain	Res	Type	Atoms	Z	Observed(°)	Ideal(°)
1	B	265	ARG	NE-CZ-NH2	-10.39	115.11	120.30
1	A	75	ARG	NE-CZ-NH2	-9.78	115.41	120.30
1	A	327	ASP	CB-CG-OD1	9.62	126.96	118.30
1	B	335	ARG	NE-CZ-NH1	9.33	124.97	120.30
1	B	300	ARG	NE-CZ-NH2	-9.14	115.73	120.30
1	B	327	ASP	CB-CG-OD2	-8.76	110.42	118.30
1	A	185	TYR	CB-CG-CD2	-8.66	115.80	121.00
1	A	327	ASP	CB-CG-OD2	-8.60	110.56	118.30
1	A	239	ARG	NE-CZ-NH1	8.59	124.60	120.30
1	A	69	ASP	CB-CG-OD1	8.13	125.61	118.30
1	A	234	ASP	CB-CG-OD2	-8.08	111.03	118.30
1	B	300	ARG	NE-CZ-NH1	8.05	124.33	120.30
1	B	69	ASP	CB-CG-OD2	-7.97	111.13	118.30
1	B	69	ASP	CB-CG-OD1	7.96	125.46	118.30
1	A	75	ARG	NE-CZ-NH1	7.95	124.27	120.30
1	A	200	ASP	CB-CG-OD1	7.71	125.24	118.30
1	A	200	ASP	CB-CG-OD2	-7.51	111.54	118.30
1	A	335	ARG	NE-CZ-NH1	7.51	124.05	120.30
1	B	51	ARG	NE-CZ-NH1	7.24	123.92	120.30
1	B	303	ASP	CB-CG-OD2	-7.18	111.84	118.30
1	A	145	ASP	CB-CG-OD2	-7.17	111.85	118.30
1	A	246	ASP	CB-CG-OD1	7.06	124.65	118.30
1	B	335	ARG	NE-CZ-NH2	-7.02	116.79	120.30
1	A	219	ARG	NE-CZ-NH1	7.01	123.81	120.30
1	B	66	ASP	CB-CG-OD2	-6.82	112.16	118.30
1	A	246	ASP	CB-CG-OD2	-6.77	112.20	118.30
1	A	66	ASP	CB-CG-OD2	-6.65	112.32	118.30
1	B	246	ASP	CB-CG-OD2	-6.55	112.41	118.30
1	B	327	ASP	CB-CG-OD1	6.54	124.19	118.30
1	A	106	ARG	NE-CZ-NH1	6.52	123.56	120.30
1	A	328	ARG	NE-CZ-NH1	6.51	123.56	120.30

*Continued on next page...*

Continued from previous page...

Mol	Chain	Res	Type	Atoms	Z	Observed(°)	Ideal(°)
1	A	184	ARG	NE-CZ-NH1	6.51	123.55	120.30
1	B	303	ASP	CB-CG-OD1	6.51	124.16	118.30
1	A	40	ARG	NE-CZ-NH2	-6.46	117.07	120.30
1	A	69	ASP	CB-CG-OD2	-6.23	112.69	118.30
1	B	66	ASP	CB-CG-OD1	6.13	123.81	118.30
1	B	229	ASP	CB-CG-OD2	-6.09	112.82	118.30
1	A	33	ASP	CB-CG-OD1	5.89	123.60	118.30
1	B	185	TYR	CB-CG-CD2	-5.81	117.51	121.00
1	B	145	ASP	CB-CG-OD1	5.79	123.51	118.30
1	B	265	ARG	NE-CZ-NH1	5.70	123.15	120.30
1	A	145	ASP	CB-CG-OD1	5.62	123.36	118.30
1	B	240	ASP	CB-CG-OD1	5.58	123.33	118.30
1	B	234	ASP	CB-CG-OD2	-5.58	113.28	118.30
1	B	234	ASP	CB-CG-OD1	5.58	123.32	118.30
1	A	185	TYR	CB-CG-CD1	5.57	124.34	121.00
1	B	246	ASP	CB-CG-OD1	5.54	123.28	118.30
1	B	170	ASP	CB-CG-OD2	-5.53	113.33	118.30
1	B	145	ASP	CB-CG-OD2	-5.49	113.36	118.30
1	B	332	ASP	CB-CG-OD1	5.48	123.23	118.30
1	B	185	TYR	CB-CA-C	-5.48	99.44	110.40
1	B	231	ASP	CB-CG-OD1	5.46	123.22	118.30
1	B	316	GLU	CG-CD-OE1	5.45	129.20	118.30
1	A	229	ASP	CB-CG-OD1	5.37	123.13	118.30
1	A	231[A]	ASP	CB-CG-OD1	5.37	123.14	118.30
1	A	231[B]	ASP	CB-CG-OD1	5.37	123.14	118.30
1	B	50	ARG	NE-CZ-NH2	-5.36	117.62	120.30
1	A	239	ARG	NE-CZ-NH2	-5.34	117.63	120.30
1	A	33	ASP	CB-CG-OD2	-5.28	113.55	118.30
1	A	50	ARG	NE-CZ-NH2	-5.20	117.70	120.30
1	A	66	ASP	CB-CG-OD1	5.13	122.92	118.30
1	A	231[A]	ASP	CB-CG-OD2	-5.12	113.69	118.30
1	A	231[B]	ASP	CB-CG-OD2	-5.12	113.69	118.30
1	B	239	ARG	NE-CZ-NH1	5.09	122.84	120.30
1	B	170	ASP	CB-CG-OD1	5.08	122.88	118.30
1	B	231	ASP	CB-CG-OD2	-5.08	113.73	118.30
1	B	220	ARG	NE-CZ-NH1	5.03	122.82	120.30
1	A	303	ASP	CB-CG-OD2	-5.01	113.79	118.30

There are no chirality outliers.

There are no planarity outliers.

## 5.2 Too-close contacts

In the following table, the Non-H and H(model) columns list the number of non-hydrogen atoms and hydrogen atoms in the chain respectively. The H(added) column lists the number of hydrogen atoms added and optimized by MolProbity. The Clashes column lists the number of clashes within the asymmetric unit, whereas Symm-Clashes lists symmetry-related clashes.

Mol	Chain	Non-H	H(model)	H(added)	Clashes	Symm-Clashes
1	A	2709	0	2672	44	0
1	B	2704	0	2665	48	0
2	A	1	0	0	0	0
2	B	1	0	0	0	0
3	A	44	0	27	1	0
3	B	44	0	27	1	0
4	A	36	0	22	1	0
4	B	36	0	22	2	0
5	A	10	0	24	5	0
5	B	5	0	12	0	0
6	A	490	0	0	13	0
6	B	409	0	0	6	0
All	All	6489	0	5471	94	0

The all-atom clashscore is defined as the number of clashes found per 1000 atoms (including hydrogen atoms). The all-atom clashscore for this structure is 8.

All (94) close contacts within the same asymmetric unit are listed below, sorted by their clash magnitude.

Atom-1	Atom-2	Interatomic distance (Å)	Clash overlap (Å)
1:B:3[B]:GLU:HG2	1:B:4:LYS:N	1.83	0.94
1:B:113:ILE:HG12	1:B:167[A]:MET:HE1	1.46	0.93
1:A:113:ILE:HG12	1:A:167[B]:MET:HE1	1.53	0.90
1:A:1:MET:HE2	5:A:952:TMA:H12	1.65	0.78
1:A:44:SER:N	6:A:1739:HOH:O	2.15	0.75
1:B:113:ILE:CG1	1:B:167[A]:MET:HE1	2.17	0.75
1:A:1:MET:HE2	5:A:952:TMA:C1	2.19	0.71
1:A:138:ASN:HB3	6:A:1310:HOH:O	1.92	0.69
1:B:132:SER:OG	1:B:134[B]:THR:HG22	1.92	0.69
1:B:105:TYR:O	1:B:109:LEU:HB2	1.94	0.68
1:A:125:LYS:HD3	1:A:178:TRP:NE1	2.08	0.68
1:A:1:MET:CE	5:A:952:TMA:H12	2.25	0.67
1:A:173:GLN:NE2	6:A:1879:HOH:O	2.29	0.65
1:B:328:ARG:NH2	6:B:1740:HOH:O	2.29	0.65
1:A:113:ILE:CG1	1:A:167[B]:MET:HE1	2.26	0.65

*Continued on next page...*

*Continued from previous page...*

Atom-1	Atom-2	Interatomic distance (Å)	Clash overlap (Å)
1:B:35:PHE:HE2	1:B:46:PRO:HB3	1.64	0.63
1:B:295:LYS:NZ	6:B:1726:HOH:O	2.31	0.63
1:A:43:GLY:HA3	6:A:1739:HOH:O	1.97	0.63
1:A:39:PHE:CE1	1:A:345:GLY:HA2	2.33	0.63
1:B:47:GLU:HG2	1:B:344:PHE:HB3	1.81	0.62
3:A:400:NAI:H4N	4:A:401:UPG:H4'	1.82	0.62
1:A:96[A]:GLU:HG3	1:A:100:LYS:CE	2.31	0.61
1:B:47:GLU:OE1	1:B:50:ARG:NH2	2.29	0.61
1:A:117:GLU:OE1	1:B:106:ARG:HD3	2.02	0.60
1:B:70:GLN:HB2	1:B:114:GLN:NE2	2.17	0.58
1:B:47:GLU:OE2	1:B:50:ARG:NH1	2.29	0.57
1:A:219:ARG:HG3	6:A:1809:HOH:O	2.05	0.56
1:A:47:GLU:OE1	1:A:50:ARG:NH1	2.38	0.56
1:B:41:GLY:H	1:B:46:PRO:HA	1.71	0.56
1:A:179:ASN:HD21	1:A:261:GLN:NE2	2.05	0.55
1:A:206:ASN:HB3	6:A:1966:HOH:O	2.07	0.55
1:B:97:SER:O	1:B:156:PRO:HG2	2.07	0.55
1:A:97:SER:O	1:A:156:PRO:HG2	2.07	0.55
1:A:129:PHE:CZ	1:A:164:ILE:HG21	2.43	0.54
1:B:79:LYS:HD3	1:B:80:TYR:CE2	2.43	0.54
1:B:240:ASP:HB2	1:B:308:TYR:HA	1.89	0.54
1:A:1:MET:HE3	1:A:27:TYR:CD1	2.42	0.53
1:A:41:GLY:HA3	6:A:1617:HOH:O	2.07	0.53
1:B:134[B]:THR:HG23	1:B:158:GLY:HA2	1.91	0.52
1:B:186:PHE:CE2	1:B:309:ALA:HB2	2.45	0.52
1:A:176[A]:LYS:HG2	6:A:1412:HOH:O	2.09	0.52
1:B:2:ALA:N	1:B:3[B]:GLU:OE2	2.44	0.51
1:B:184:ARG:CZ	1:B:266:ILE:HG21	2.41	0.51
1:A:70:GLN:NE2	6:A:1821:HOH:O	2.42	0.51
1:B:188:PRO:HA	1:B:242:ILE:O	2.10	0.51
1:B:272:GLY:HA2	1:B:309:ALA:O	2.11	0.50
1:A:1:MET:CE	1:A:27:TYR:CD1	2.95	0.49
1:B:186:PHE:CZ	1:B:309:ALA:HB2	2.48	0.48
3:B:402:NAI:C5N	4:B:403:UPG:H4'	2.43	0.48
1:B:126:ASN:HB3	1:B:258:LEU:HD13	1.94	0.48
1:B:49:LEU:HB3	1:B:60:VAL:HG11	1.96	0.48
1:B:106:ARG:O	1:B:110[A]:THR:HB	2.13	0.48
1:B:47:GLU:CG	1:B:344:PHE:HB3	2.43	0.48
1:B:47:GLU:CD	1:B:50:ARG:HH22	2.17	0.47
5:A:950:TMA:H21	6:A:1274:HOH:O	2.15	0.47
1:A:257:LYS:O	1:A:260:GLU:HB2	2.15	0.47

*Continued on next page...*

Continued from previous page...

Atom-1	Atom-2	Interatomic distance (Å)	Clash overlap (Å)
1:B:327:ASP:HB2	6:B:2243:HOH:O	2.15	0.46
1:B:282:GLN:NE2	6:B:1693:HOH:O	2.49	0.46
1:A:8:THR:O	1:A:88:PHE:HB2	2.16	0.46
1:A:1:MET:HE3	1:A:83[A]:MET:CE	2.46	0.46
1:B:134[B]:THR:CG2	1:B:158:GLY:HA2	2.46	0.46
1:B:22:LEU:HD23	1:B:252:ILE:CD1	2.46	0.45
1:A:96[A]:GLU:CG	1:A:100:LYS:HE2	2.47	0.45
1:B:219:ARG:HB2	6:B:1681:HOH:O	2.16	0.44
1:A:304:VAL:HB	6:A:1919:HOH:O	2.17	0.44
1:B:187:ASN:O	1:B:241:TYR:HA	2.16	0.44
1:A:167[B]:MET:HE3	1:A:167[B]:MET:HB3	1.74	0.44
1:B:10:GLY:HA3	1:B:31:VAL:HG13	1.99	0.43
1:A:106:ARG:O	1:A:110[A]:THR:HB	2.18	0.43
1:B:226:PHE:CE1	4:B:403:UPG:C4	3.02	0.43
1:A:328:ARG:HD2	1:A:328:ARG:HA	1.82	0.43
1:B:35:PHE:CE2	1:B:46:PRO:HB3	2.49	0.42
1:A:260:GLU:OE1	5:A:950:TMA:H22	2.19	0.42
1:B:47:GLU:CD	1:B:50:ARG:HH12	2.18	0.42
1:A:1:MET:HE1	6:A:1886:HOH:O	2.19	0.42
1:A:113:ILE:O	1:A:117:GLU:HG3	2.19	0.42
1:A:96[B]:GLU:HB3	1:A:100:LYS:HE2	2.02	0.42
1:A:105:TYR:O	1:A:109:LEU:HB2	2.20	0.42
1:A:4:LYS:HE2	1:A:61[A]:GLU:OE2	2.20	0.42
1:B:109:LEU:HD23	1:B:109:LEU:HA	1.81	0.41
1:A:1:MET:CE	1:A:83[A]:MET:CE	2.99	0.41
1:B:22:LEU:HD23	1:B:252:ILE:HD12	2.02	0.41
1:A:272:GLY:HA2	1:A:309:ALA:O	2.21	0.41
1:B:167[A]:MET:HE3	1:B:167[A]:MET:HB3	1.93	0.40
1:A:163:PHE:O	1:A:167[A]:MET:HG3	2.21	0.40
1:B:173:GLN:HG3	6:B:1898:HOH:O	2.22	0.40
1:A:169:ARG:HG2	6:A:1477:HOH:O	2.21	0.40

There are no symmetry-related clashes.

## 5.3 Torsion angles

### 5.3.1 Protein backbone

In the following table, the Percentiles column shows the percent Ramachandran outliers of the chain as a percentile score with respect to all X-ray entries followed by that with respect to entries of similar resolution.

The Analysed column shows the number of residues for which the backbone conformation was analysed, and the total number of residues.

Mol	Chain	Analysed	Favoured	Allowed	Outliers	Percentiles	
1	A	352/348 (101%)	346 (98%)	6 (2%)	0	100	100
1	B	352/348 (101%)	342 (97%)	10 (3%)	0	100	100
All	All	704/696 (101%)	688 (98%)	16 (2%)	0	100	100

There are no Ramachandran outliers to report.

### 5.3.2 Protein sidechains [i](#)

In the following table, the Percentiles column shows the percent sidechain outliers of the chain as a percentile score with respect to all X-ray entries followed by that with respect to entries of similar resolution.

The Analysed column shows the number of residues for which the sidechain conformation was analysed, and the total number of residues.

Mol	Chain	Analysed	Rotameric	Outliers	Percentiles	
1	A	287/281 (102%)	271 (94%)	16 (6%)	21	3
1	B	287/281 (102%)	277 (96%)	10 (4%)	36	9
All	All	574/562 (102%)	548 (96%)	26 (4%)	32	5

All (26) residues with a non-rotameric sidechain are listed below:

Mol	Chain	Res	Type
1	A	1	MET
1	A	44	SER
1	A	74	GLN
1	A	83[A]	MET
1	A	83[B]	MET
1	A	96[A]	GLU
1	A	96[B]	GLU
1	A	100	LYS
1	A	176[A]	LYS
1	A	176[B]	LYS
1	A	204	ILE
1	A	219	ARG
1	A	233	GLU
1	A	247	LEU
1	A	252	ILE

*Continued on next page...*

*Continued from previous page...*

Mol	Chain	Res	Type
1	A	295	LYS
1	B	44	SER
1	B	58	ARG
1	B	74	GLN
1	B	81	SER
1	B	202	GLN
1	B	204	ILE
1	B	286	LYS
1	B	295	LYS
1	B	307[A]	CYS
1	B	307[B]	CYS

Sometimes sidechains can be flipped to improve hydrogen bonding and reduce clashes. All (13) such sidechains are listed below:

Mol	Chain	Res	Type
1	A	70	GLN
1	A	74	GLN
1	A	114	GLN
1	A	173	GLN
1	A	261	GLN
1	A	339	GLN
1	B	74	GLN
1	B	114	GLN
1	B	138	ASN
1	B	173	GLN
1	B	224	ASN
1	B	337	GLN
1	B	339	GLN

### 5.3.3 RNA [i](#)

There are no RNA molecules in this entry.

### 5.4 Non-standard residues in protein, DNA, RNA chains [i](#)

There are no non-standard protein/DNA/RNA residues in this entry.

### 5.5 Carbohydrates [i](#)

There are no monosaccharides in this entry.

## 5.6 Ligand geometry

Of 9 ligands modelled in this entry, 2 are monoatomic - leaving 7 for Mogul analysis.

In the following table, the Counts columns list the number of bonds (or angles) for which Mogul statistics could be retrieved, the number of bonds (or angles) that are observed in the model and the number of bonds (or angles) that are defined in the Chemical Component Dictionary. The Link column lists molecule types, if any, to which the group is linked. The Z score for a bond length (or angle) is the number of standard deviations the observed value is removed from the expected value. A bond length (or angle) with  $|Z| > 2$  is considered an outlier worth inspection. RMSZ is the root-mean-square of all Z scores of the bond lengths (or angles).

Mol	Type	Chain	Res	Link	Bond lengths			Bond angles		
					Counts	RMSZ	# Z  > 2	Counts	RMSZ	# Z  > 2
5	TMA	A	950	-	4,4,4	1.55	0	6,6,6	0.22	0
3	NAI	A	400	-	42,48,48	1.07	3 (7%)	47,73,73	1.32	4 (8%)
4	UPG	A	401	-	35,38,38	0.89	0	53,58,58	1.12	3 (5%)
4	UPG	B	403	-	35,38,38	0.77	0	53,58,58	0.93	2 (3%)
5	TMA	B	951	-	4,4,4	1.43	0	6,6,6	0.21	0
3	NAI	B	402	-	42,48,48	1.08	4 (9%)	47,73,73	1.32	4 (8%)
5	TMA	A	952	-	4,4,4	1.28	0	6,6,6	0.17	0

In the following table, the Chirals column lists the number of chiral outliers, the number of chiral centers analysed, the number of these observed in the model and the number defined in the Chemical Component Dictionary. Similar counts are reported in the Torsion and Rings columns. '-' means no outliers of that kind were identified.

Mol	Type	Chain	Res	Link	Chirals	Torsions	Rings
3	NAI	B	402	-	-	8/25/72/72	0/5/5/5
3	NAI	A	400	-	-	6/25/72/72	0/5/5/5
4	UPG	A	401	-	-	1/23/59/59	0/3/3/3
4	UPG	B	403	-	-	2/23/59/59	0/3/3/3

All (7) bond length outliers are listed below:

Mol	Chain	Res	Type	Atoms	Z	Observed(Å)	Ideal(Å)
3	A	400	NAI	C4N-C3N	-3.32	1.43	1.49
3	A	400	NAI	C4N-C5N	-3.07	1.40	1.48
3	B	402	NAI	C4N-C3N	-2.58	1.44	1.49
3	B	402	NAI	C4N-C5N	-2.43	1.42	1.48
3	B	402	NAI	C2A-N1A	2.32	1.38	1.33
3	B	402	NAI	C7N-C3N	2.16	1.53	1.48
3	A	400	NAI	C2A-N1A	2.09	1.37	1.33



All (13) bond angle outliers are listed below:

Mol	Chain	Res	Type	Atoms	Z	Observed(°)	Ideal(°)
3	B	402	NAI	C3N-C2N-N1N	-4.70	116.39	123.10
3	A	400	NAI	C3N-C2N-N1N	-4.62	116.50	123.10
3	A	400	NAI	C1D-N1N-C2N	-3.84	114.72	121.11
4	B	403	UPG	O5'-C1'-O3B	-3.77	106.44	111.36
4	A	401	UPG	O5'-C1'-O3B	-3.73	106.48	111.36
3	B	402	NAI	C1D-N1N-C2N	-3.60	115.11	121.11
3	B	402	NAI	C5A-C6A-N6A	3.32	125.39	120.35
4	A	401	UPG	O3B-C1'-C2'	3.25	114.34	108.38
3	A	400	NAI	O4B-C1B-C2B	-3.05	102.48	106.93
3	B	402	NAI	O4B-C1B-C2B	-2.89	102.70	106.93
4	A	401	UPG	O5'-C1'-C2'	-2.72	104.59	110.35
3	A	400	NAI	C4A-C5A-N7A	2.22	111.71	109.40
4	B	403	UPG	O2'-C2'-C1'	2.10	115.16	110.05

There are no chirality outliers.

All (17) torsion outliers are listed below:

Mol	Chain	Res	Type	Atoms
3	B	402	NAI	C5B-O5B-PA-O1A
4	A	401	UPG	C1'-O3B-PB-O3A
4	B	403	UPG	C1'-O3B-PB-O3A
3	A	400	NAI	C5B-O5B-PA-O3
3	B	402	NAI	C5B-O5B-PA-O3
3	B	402	NAI	C5D-O5D-PN-O3
4	B	403	UPG	C1'-O3B-PB-O1B
3	B	402	NAI	O4D-C1D-N1N-C6N
3	A	400	NAI	C5B-O5B-PA-O2A
3	A	400	NAI	O4D-C1D-N1N-C6N
3	B	402	NAI	O4B-C4B-C5B-O5B
3	A	400	NAI	O4B-C4B-C5B-O5B
3	A	400	NAI	PA-O3-PN-O1N
3	A	400	NAI	PA-O3-PN-O2N
3	B	402	NAI	PA-O3-PN-O2N
3	B	402	NAI	C5B-O5B-PA-O2A
3	B	402	NAI	C5D-O5D-PN-O1N

There are no ring outliers.

6 monomers are involved in 8 short contacts:

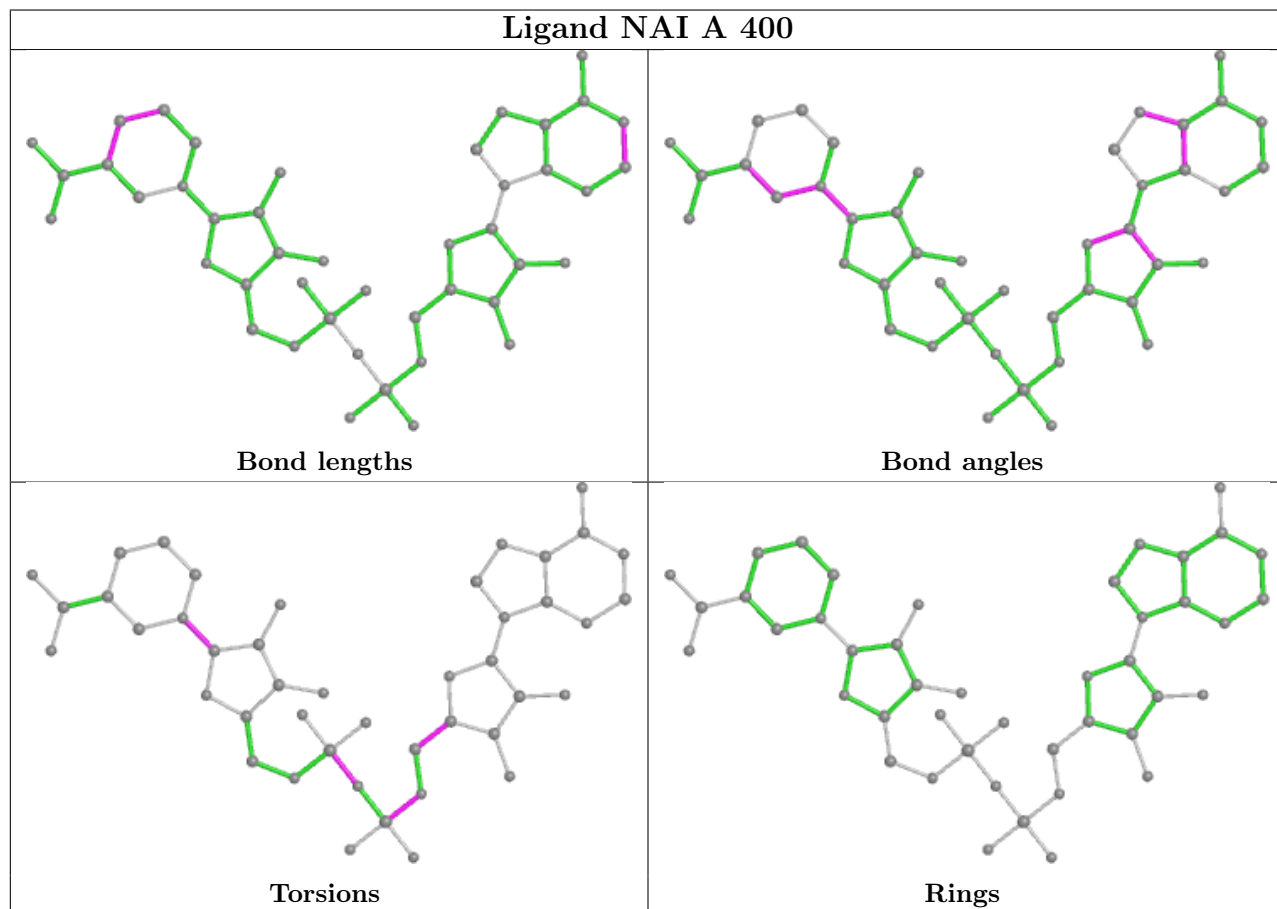
Mol	Chain	Res	Type	Clashes	Symm-Clashes
5	A	950	TMA	2	0

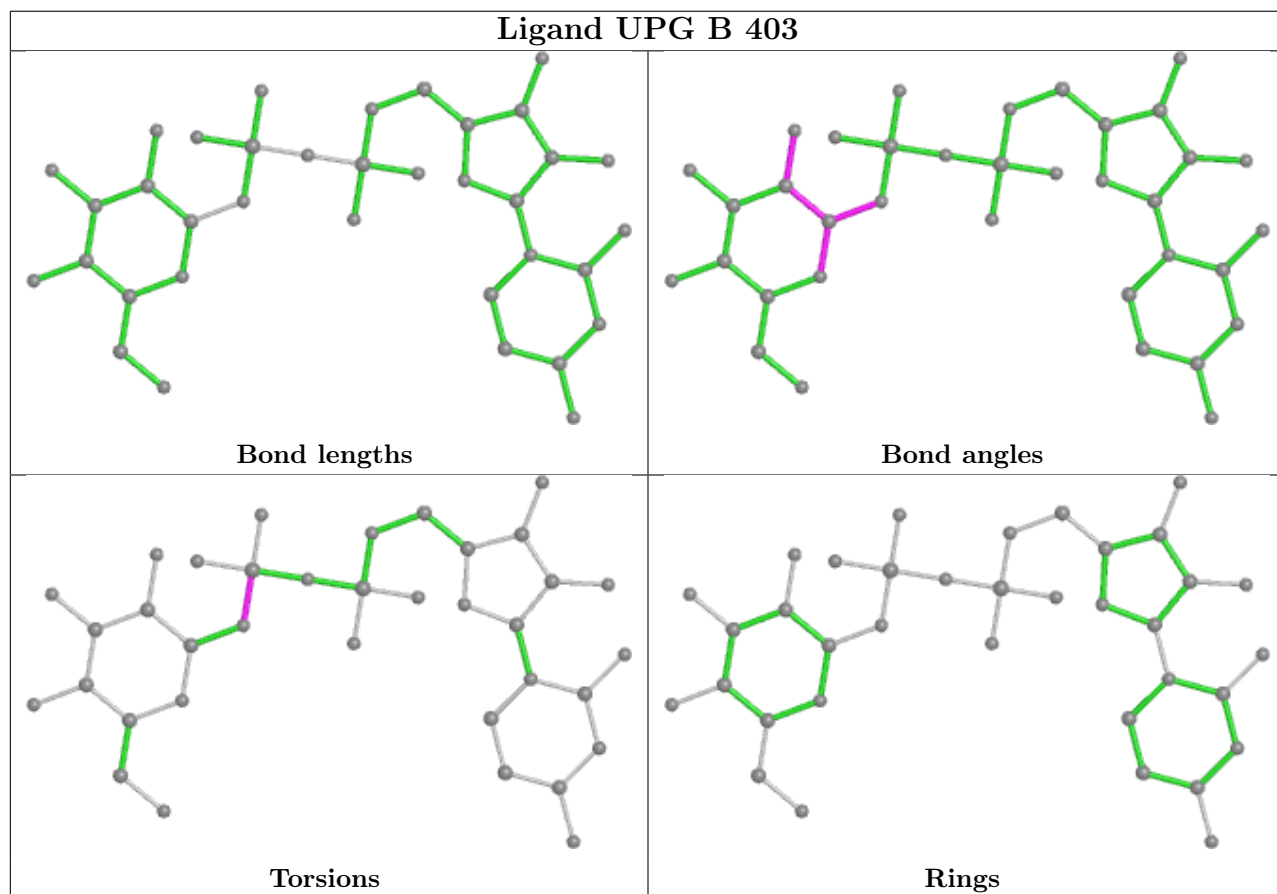
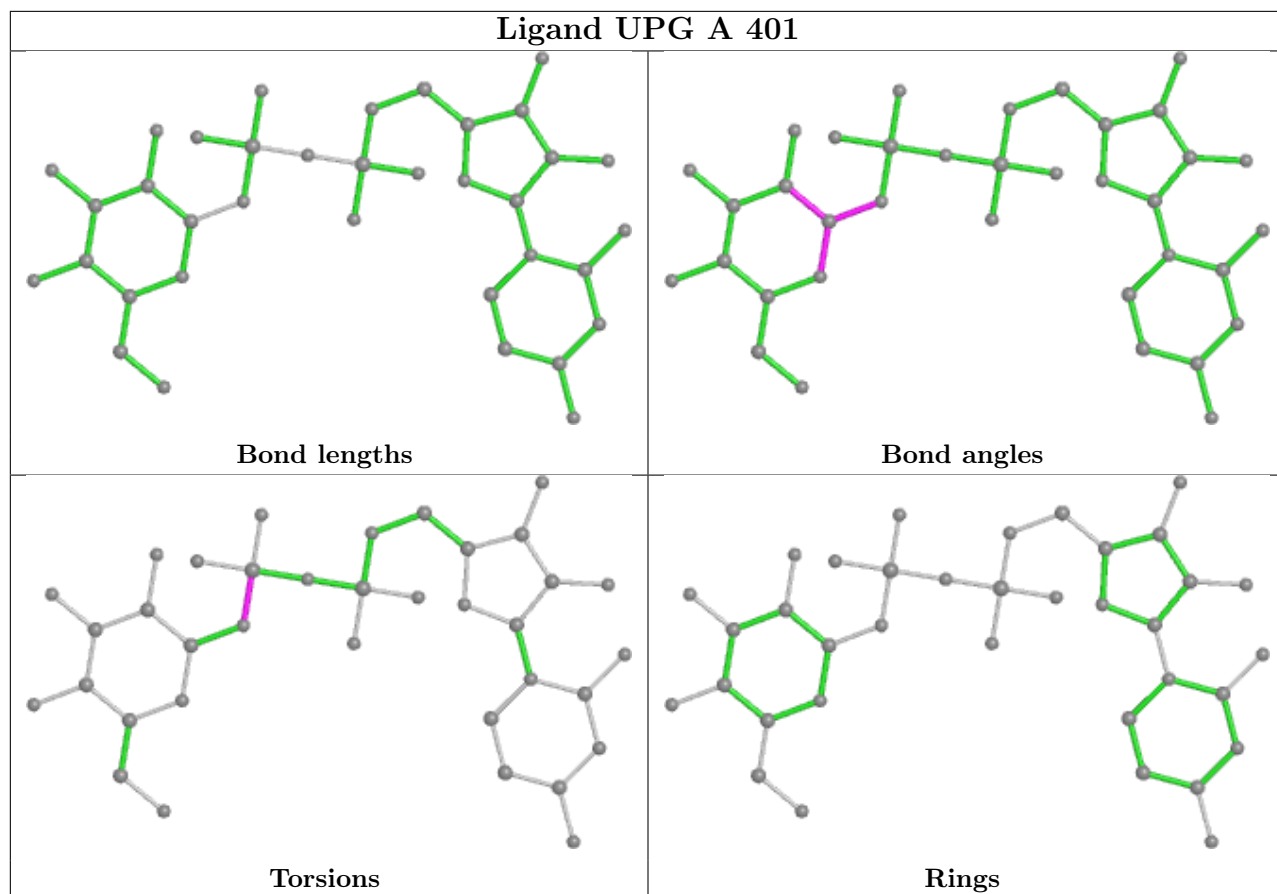
*Continued on next page...*

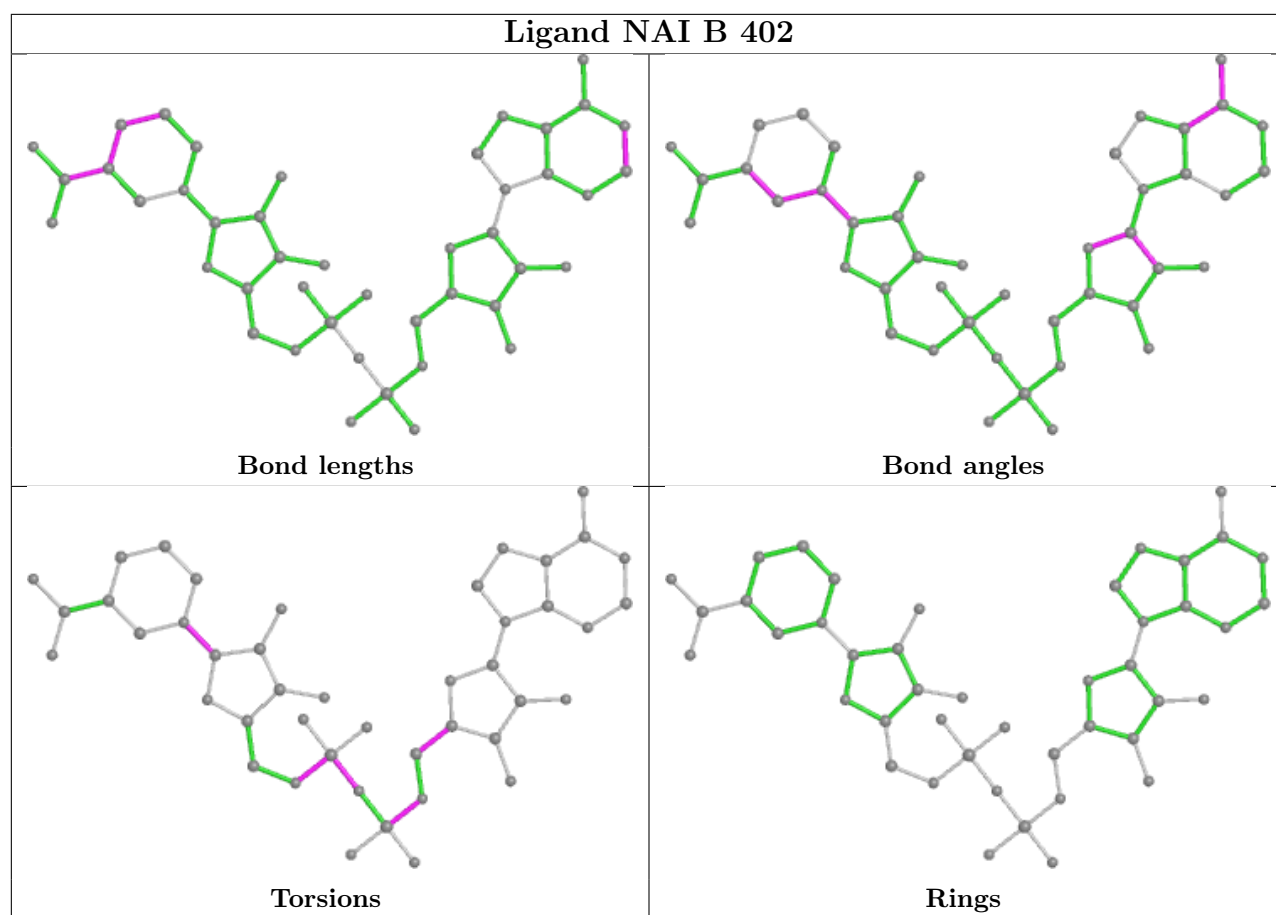
*Continued from previous page...*

Mol	Chain	Res	Type	Clashes	Symm-Clashes
3	A	400	NAI	1	0
4	A	401	UPG	1	0
4	B	403	UPG	2	0
3	B	402	NAI	1	0
5	A	952	TMA	3	0

The following is a two-dimensional graphical depiction of Mogul quality analysis of bond lengths, bond angles, torsion angles, and ring geometry for all instances of the Ligand of Interest. In addition, ligands with molecular weight > 250 and outliers as shown on the validation Tables will also be included. For torsion angles, if less than 5% of the Mogul distribution of torsion angles is within 10 degrees of the torsion angle in question, then that torsion angle is considered an outlier. Any bond that is central to one or more torsion angles identified as an outlier by Mogul will be highlighted in the graph. For rings, the root-mean-square deviation (RMSD) between the ring in question and similar rings identified by Mogul is calculated over all ring torsion angles. If the average RMSD is greater than 60 degrees and the minimal RMSD between the ring in question and any Mogul-identified rings is also greater than 60 degrees, then that ring is considered an outlier. The outliers are highlighted in purple. The color gray indicates Mogul did not find sufficient equivalents in the CSD to analyse the geometry.







## 5.7 Other polymers [i](#)

There are no such residues in this entry.

## 5.8 Polymer linkage issues [i](#)

There are no chain breaks in this entry.

## 6 Fit of model and data [i](#)

### 6.1 Protein, DNA and RNA chains [i](#)

In the following table, the column labelled ‘#RSRZ > 2’ contains the number (and percentage) of RSRZ outliers, followed by percent RSRZ outliers for the chain as percentile scores relative to all X-ray entries and entries of similar resolution. The OWAB column contains the minimum, median, 95<sup>th</sup> percentile and maximum values of the occupancy-weighted average B-factor per residue. The column labelled ‘Q < 0.9’ lists the number of (and percentage) of residues with an average occupancy less than 0.9.

Mol	Chain	Analysed	<RSRZ>	#RSRZ>2	OWAB(Å <sup>2</sup> )	Q<0.9
1	A	346/348 (99%)	-0.44	4 (1%) 79 82	8, 14, 39, 99	0
1	B	345/348 (99%)	-0.49	1 (0%) 94 95	8, 17, 40, 77	0
All	All	691/696 (99%)	-0.46	5 (0%) 87 90	8, 15, 40, 99	0

All (5) RSRZ outliers are listed below:

Mol	Chain	Res	Type	RSRZ
1	A	346	THR	15.3
1	A	1	MET	8.0
1	A	345	GLY	5.9
1	A	2	ALA	2.6
1	B	3[A]	GLU	2.1

### 6.2 Non-standard residues in protein, DNA, RNA chains [i](#)

There are no non-standard protein/DNA/RNA residues in this entry.

### 6.3 Carbohydrates [i](#)

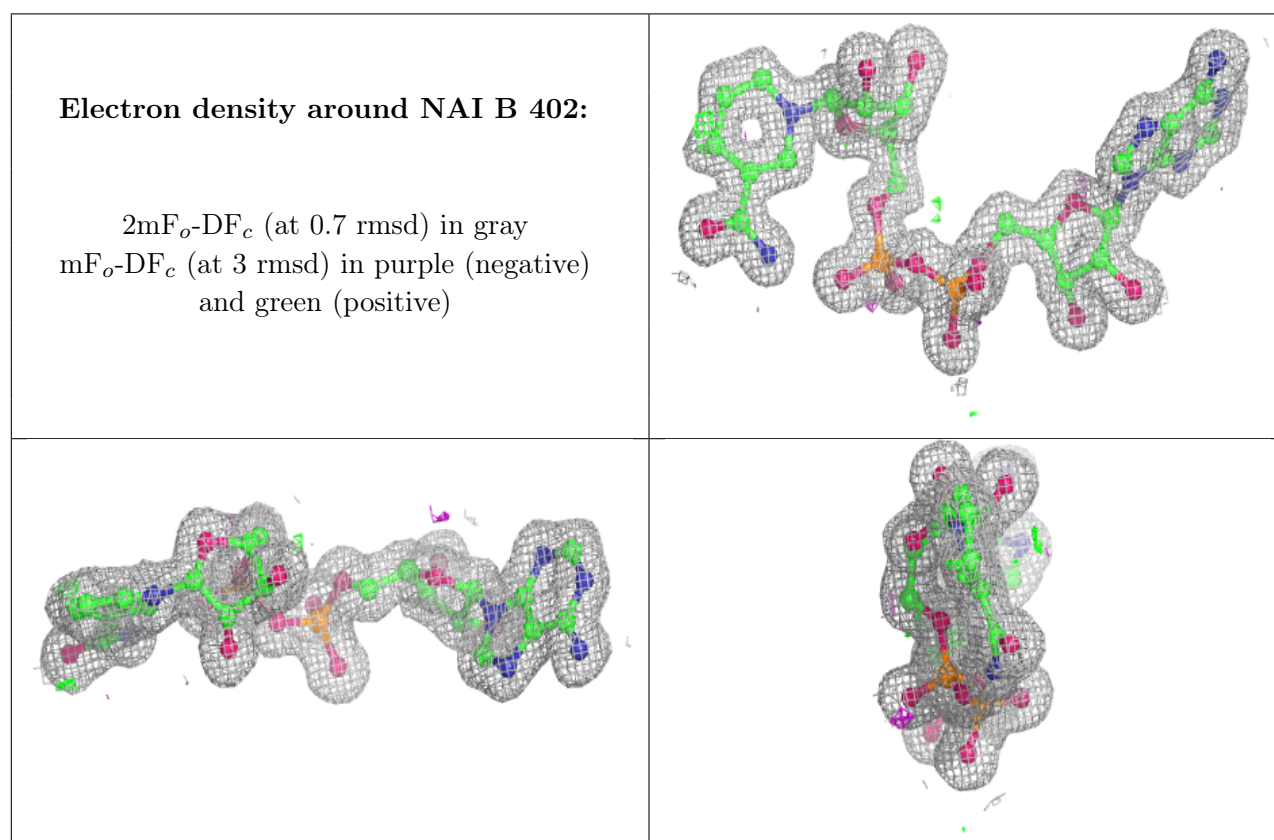
There are no monosaccharides in this entry.

### 6.4 Ligands [i](#)

In the following table, the Atoms column lists the number of modelled atoms in the group and the number defined in the chemical component dictionary. The B-factors column lists the minimum, median, 95<sup>th</sup> percentile and maximum values of B factors of atoms in the group. The column labelled ‘Q < 0.9’ lists the number of atoms with occupancy less than 0.9.

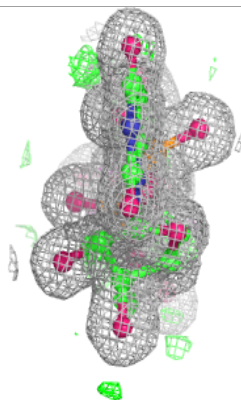
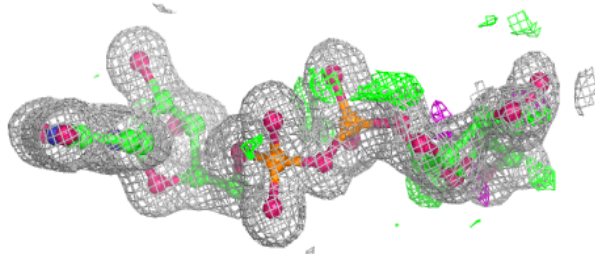
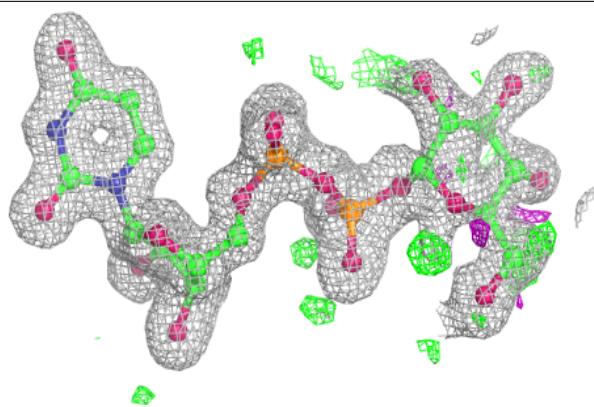
Mol	Type	Chain	Res	Atoms	RSCC	RSR	B-factors( $\text{\AA}^2$ )	Q<0.9
2	MG	B	960	1/1	0.93	0.12	34,34,34,34	0
5	TMA	A	952	5/5	0.93	0.16	30,30,38,49	0
5	TMA	B	951	5/5	0.94	0.08	27,32,33,42	0
5	TMA	A	950	5/5	0.95	0.10	19,23,29,44	0
3	NAI	B	402	44/44	0.98	0.07	8,11,15,19	0
4	UPG	A	401	36/36	0.98	0.06	8,12,38,56	0
4	UPG	B	403	36/36	0.98	0.06	10,14,23,42	0
2	MG	A	961	1/1	0.99	0.05	19,19,19,19	0
3	NAI	A	400	44/44	0.99	0.07	7,10,14,21	0

The following is a graphical depiction of the model fit to experimental electron density of all instances of the Ligand of Interest. In addition, ligands with molecular weight > 250 and outliers as shown on the geometry validation Tables will also be included. Each fit is shown from different orientation to approximate a three-dimensional view.

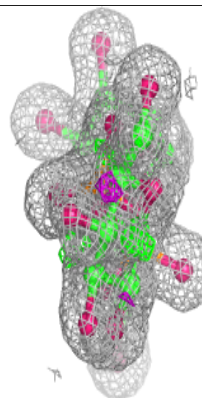
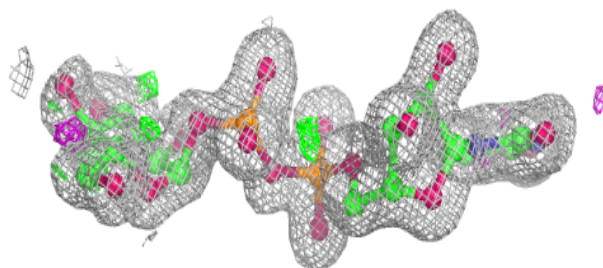
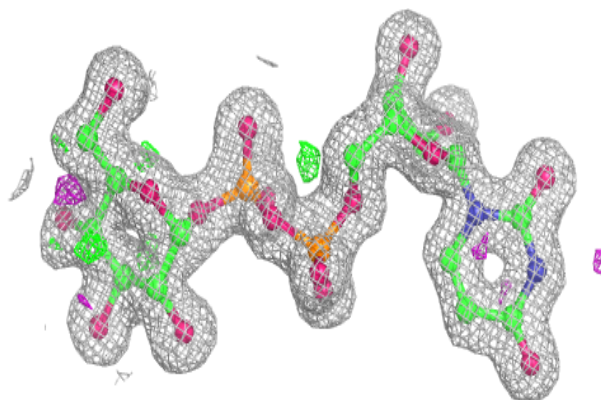


**Electron density around UPG A 401:**

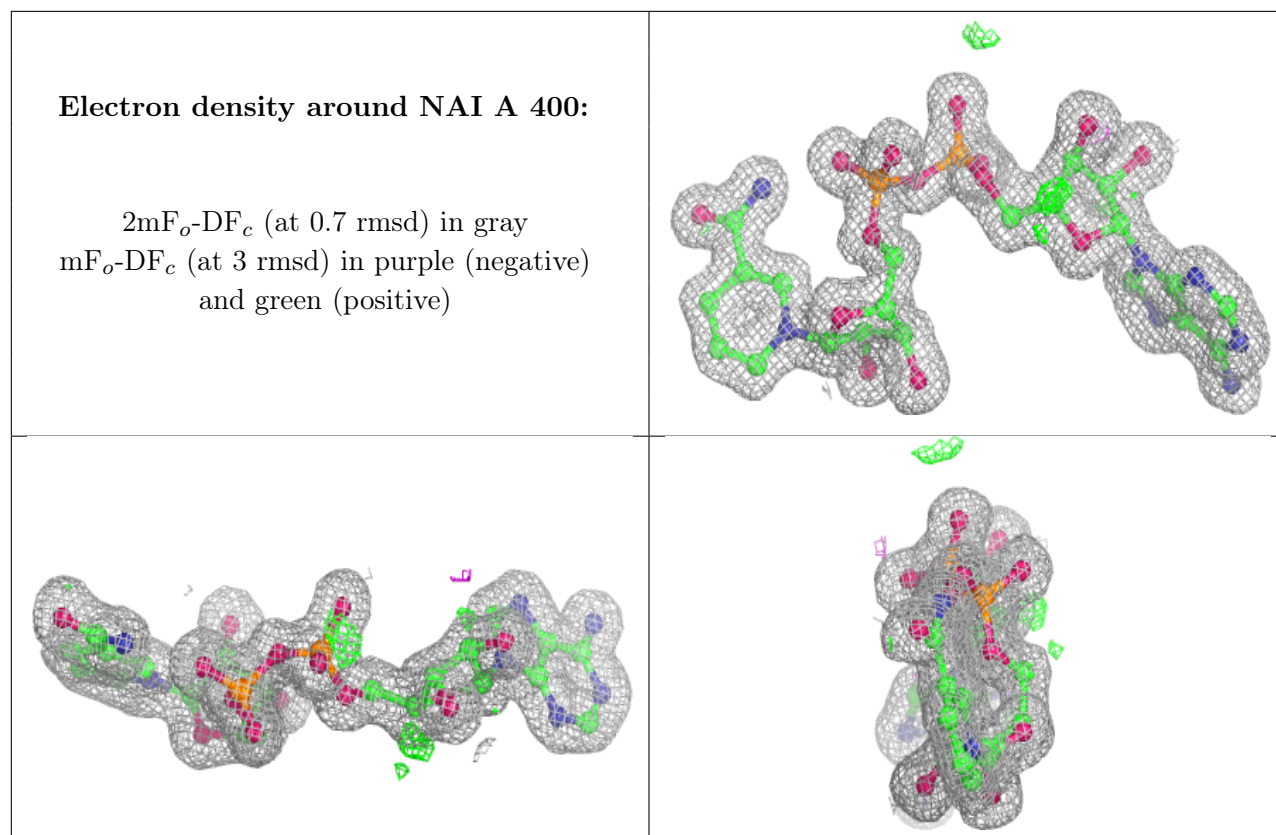
$2mF_o-DF_c$  (at 0.7 rmsd) in gray  
 $mF_o-DF_c$  (at 3 rmsd) in purple (negative)  
and green (positive)

**Electron density around UPG B 403:**

$2mF_o-DF_c$  (at 0.7 rmsd) in gray  
 $mF_o-DF_c$  (at 3 rmsd) in purple (negative)  
and green (positive)







## 6.5 Other polymers [i](#)

There are no such residues in this entry.