



# Full wwPDB X-ray Structure Validation Report ⓘ

Nov 22, 2023 – 05:25 PM JST

PDB ID : 7WQI  
Title : Crystal structure of SARS coronavirus main protease in complex with PF07304814  
Authors : Lin, C.; Zhong, F.L.; Zhou, X.L.; Zeng, P.; Zhang, J.; Li, J.  
Deposited on : 2022-01-25  
Resolution : 1.93 Å(reported)

This is a Full wwPDB X-ray Structure Validation Report for a publicly released PDB entry.

We welcome your comments at [validation@mail.wwpdb.org](mailto:validation@mail.wwpdb.org)

A user guide is available at

<https://www.wwpdb.org/validation/2017/XrayValidationReportHelp>

with specific help available everywhere you see the ⓘ symbol.

The types of validation reports are described at

<http://www.wwpdb.org/validation/2017/FAQs#types>.

---

The following versions of software and data (see [references ⓘ](#)) were used in the production of this report:

MolProbity : 4.02b-467  
Mogul : 1.8.5 (274361), CSD as541be (2020)  
Xtriage (Phenix) : 1.13  
EDS : 2.36  
buster-report : 1.1.7 (2018)  
Percentile statistics : 20191225.v01 (using entries in the PDB archive December 25th 2019)  
Refmac : 5.8.0158  
CCP4 : 7.0.044 (Gargrove)  
Ideal geometry (proteins) : Engh & Huber (2001)  
Ideal geometry (DNA, RNA) : Parkinson et al. (1996)  
Validation Pipeline (wwPDB-VP) : 2.36

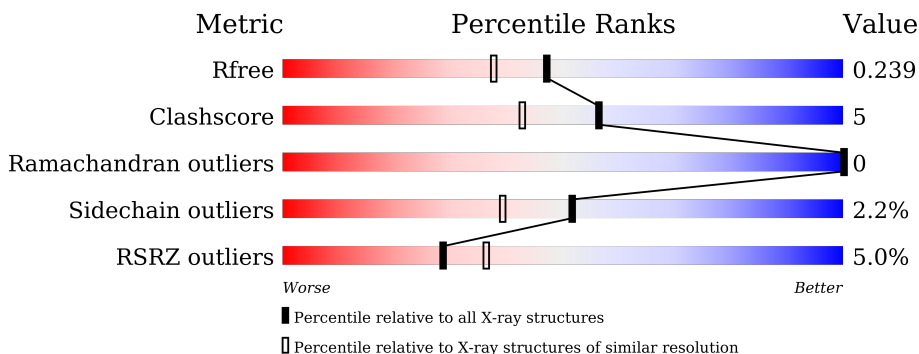
# 1 Overall quality at a glance

The following experimental techniques were used to determine the structure:

*X-RAY DIFFRACTION*

The reported resolution of this entry is 1.93 Å.

Percentile scores (ranging between 0-100) for global validation metrics of the entry are shown in the following graphic. The table shows the number of entries on which the scores are based.



Metric	Whole archive (#Entries)	Similar resolution (#Entries, resolution range(Å))
$R_{free}$	130704	4310 (1.96-1.92)
Clashscore	141614	1023 (1.94-1.94)
Ramachandran outliers	138981	1007 (1.94-1.94)
Sidechain outliers	138945	1007 (1.94-1.94)
RSRZ outliers	127900	4250 (1.96-1.92)

The table below summarises the geometric issues observed across the polymeric chains and their fit to the electron density. The red, orange, yellow and green segments of the lower bar indicate the fraction of residues that contain outliers for  $\geq 3$ , 2, 1 and 0 types of geometric quality criteria respectively. A grey segment represents the fraction of residues that are not modelled. The numeric value for each fraction is indicated below the corresponding segment, with a dot representing fractions  $\leq 5\%$ . The upper red bar (where present) indicates the fraction of residues that have poor fit to the electron density. The numeric value is given above the bar.

Mol	Chain	Length	Quality of chain
1	A	299	
1	B	299	

## 2 Entry composition [i](#)

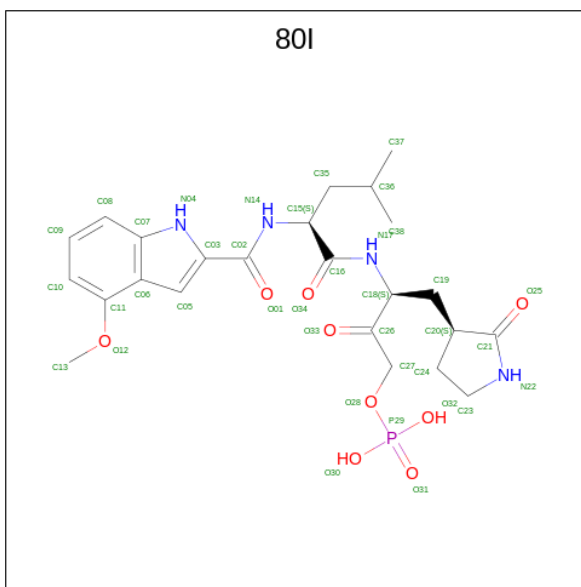
There are 3 unique types of molecules in this entry. The entry contains 4564 atoms, of which 0 are hydrogens and 0 are deuteriums.

In the tables below, the ZeroOcc column contains the number of atoms modelled with zero occupancy, the AltConf column contains the number of residues with at least one atom in alternate conformation and the Trace column contains the number of residues modelled with at most 2 atoms.

- Molecule 1 is a protein called 3C-like proteinase.

Mol	Chain	Residues	Atoms					ZeroOcc	AltConf	Trace
			Total	C	N	O	S			
1	A	299	Total	C	N	O	S	0	0	0
			2221	1406	377	417	21			
1	B	299	Total	C	N	O	S	0	0	0
			2193	1396	373	404	20			

- Molecule 2 is [(3 {S})-3-[(2 {S})-2-[(4-methoxy-1 {H}-indol-2-yl)carbonylamino]-4-methylpentanoyl]amino]-2-oxidanylidene-4-[(3 {R})-2-oxidanylidene-3,4-dihydropyrrol-3-yl]butyl] dihydrogen phosphate (three-letter code: 80I) (formula: C<sub>24</sub>H<sub>33</sub>N<sub>4</sub>O<sub>9</sub>P) (labeled as "Ligand of Interest" by depositor).



Mol	Chain	Residues	Atoms					ZeroOcc	AltConf
			Total	C	N	O	P		
2	A	1	Total	C	N	O	P	38	0
			38	24	4	9	1		
2	B	1	Total	C	N	O	P	38	0
			38	24	4	9	1		

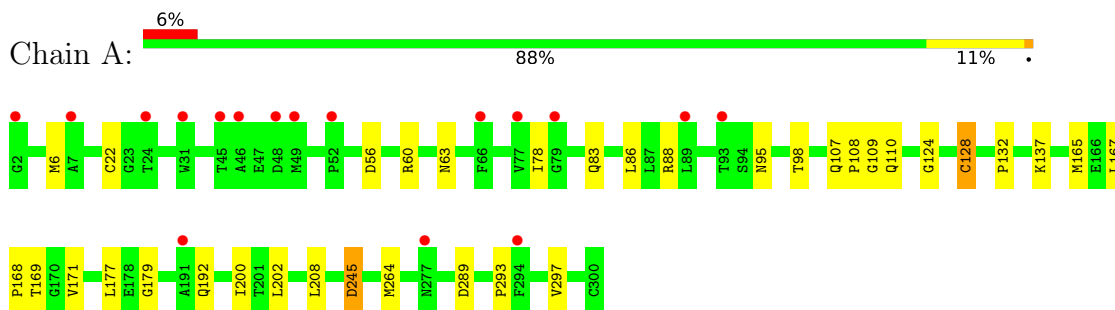
- Molecule 3 is water.

<b>Mol</b>	<b>Chain</b>	<b>Residues</b>	<b>Atoms</b>		<b>ZeroOcc</b>	<b>AltConf</b>
3	A	41	Total 41	O 41	0	0
3	B	33	Total 33	O 33	0	0

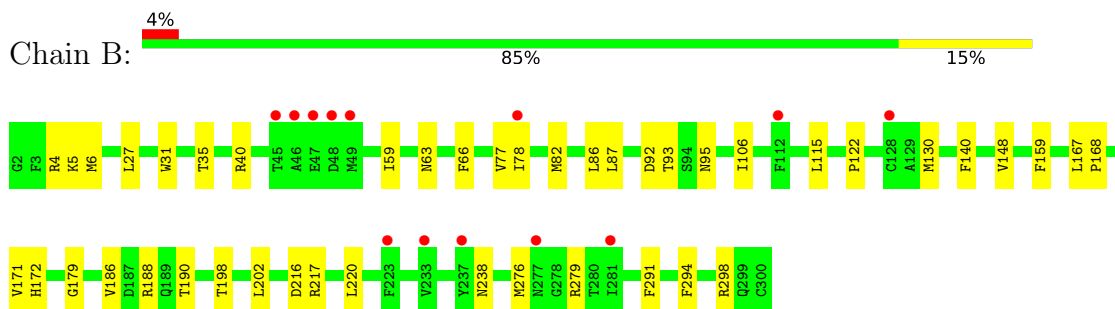
### 3 Residue-property plots [i](#)

These plots are drawn for all protein, RNA, DNA and oligosaccharide chains in the entry. The first graphic for a chain summarises the proportions of the various outlier classes displayed in the second graphic. The second graphic shows the sequence view annotated by issues in geometry and electron density. Residues are color-coded according to the number of geometric quality criteria for which they contain at least one outlier: green = 0, yellow = 1, orange = 2 and red = 3 or more. A red dot above a residue indicates a poor fit to the electron density ( $RSRZ > 2$ ). Stretches of 2 or more consecutive residues without any outlier are shown as a green connector. Residues present in the sample, but not in the model, are shown in grey.

- Molecule 1: 3C-like proteinase



- Molecule 1: 3C-like proteinase



## 4 Data and refinement statistics

Property	Value	Source
Space group	P 1	Depositor
Cell constants a, b, c, $\alpha$ , $\beta$ , $\gamma$	55.43Å 60.56Å 68.40Å 91.12° 102.61° 108.44°	Depositor
Resolution (Å)	28.97 – 1.93 51.09 – 1.93	Depositor EDS
% Data completeness (in resolution range)	93.1 (28.97-1.93) 88.3 (51.09-1.93)	Depositor EDS
$R_{merge}$	0.04	Depositor
$R_{sym}$	(Not available)	Depositor
$\langle I/\sigma(I) \rangle$ <sup>1</sup>	1.21 (at 1.92Å)	Xtrriage
Refinement program	PHENIX 1.12_2829	Depositor
R, $R_{free}$	0.214 , 0.240 0.215 , 0.239	Depositor DCC
$R_{free}$ test set	1942 reflections (3.35%)	wwPDB-VP
Wilson B-factor (Å <sup>2</sup> )	35.2	Xtrriage
Anisotropy	0.435	Xtrriage
Bulk solvent $k_{sol}$ (e/Å <sup>3</sup> ), $B_{sol}$ (Å <sup>2</sup> )	0.35 , 50.3	EDS
L-test for twinning <sup>2</sup>	$\langle  L  \rangle = 0.49$ , $\langle L^2 \rangle = 0.32$	Xtrriage
Estimated twinning fraction	No twinning to report.	Xtrriage
$F_o, F_c$ correlation	0.95	EDS
Total number of atoms	4564	wwPDB-VP
Average B, all atoms (Å <sup>2</sup> )	48.0	wwPDB-VP

Xtrriage's analysis on translational NCS is as follows: *The largest off-origin peak in the Patterson function is 6.56% of the height of the origin peak. No significant pseudotranslation is detected.*

<sup>1</sup>Intensities estimated from amplitudes.

<sup>2</sup>Theoretical values of  $\langle |L| \rangle$ ,  $\langle L^2 \rangle$  for acentric reflections are 0.5, 0.333 respectively for untwinned datasets, and 0.375, 0.2 for perfectly twinned datasets.

## 5 Model quality [i](#)

### 5.1 Standard geometry [i](#)

Bond lengths and bond angles in the following residue types are not validated in this section: 8OI

The Z score for a bond length (or angle) is the number of standard deviations the observed value is removed from the expected value. A bond length (or angle) with  $|Z| > 5$  is considered an outlier worth inspection. RMSZ is the root-mean-square of all Z scores of the bond lengths (or angles).

Mol	Chain	Bond lengths		Bond angles	
		RMSZ	# Z  >5	RMSZ	# Z  >5
1	A	0.42	1/2271 (0.0%)	0.60	0/3100
1	B	0.40	0/2243	0.56	0/3064
All	All	0.41	1/4514 (0.0%)	0.58	0/6164

All (1) bond length outliers are listed below:

Mol	Chain	Res	Type	Atoms	Z	Observed(Å)	Ideal(Å)
1	A	128	CYS	CB-SG	-5.16	1.73	1.81

There are no bond angle outliers.

There are no chirality outliers.

There are no planarity outliers.

### 5.2 Too-close contacts [i](#)

In the following table, the Non-H and H(model) columns list the number of non-hydrogen atoms and hydrogen atoms in the chain respectively. The H(added) column lists the number of hydrogen atoms added and optimized by MolProbity. The Clashes column lists the number of clashes within the asymmetric unit, whereas Symm-Clashes lists symmetry-related clashes.

Mol	Chain	Non-H	H(model)	H(added)	Clashes	Symm-Clashes
1	A	2221	0	2083	20	0
1	B	2193	0	2061	27	0
2	A	38	0	0	0	0
2	B	38	0	0	0	0
3	A	41	0	0	0	0
3	B	33	0	0	0	0
All	All	4564	0	4144	43	0

The all-atom clashscore is defined as the number of clashes found per 1000 atoms (including hydrogen atoms). The all-atom clashscore for this structure is 5.

All (43) close contacts within the same asymmetric unit are listed below, sorted by their clash magnitude.

Atom-1	Atom-2	Interatomic distance (Å)	Clash overlap (Å)
1:A:107:GLN:H	1:A:110:GLN:HE21	1.37	0.71
1:A:63:ASN:ND2	1:A:78:ILE:O	2.27	0.67
1:A:137:LYS:O	1:B:4:ARG:NH1	2.31	0.64
1:A:169:THR:HG23	1:A:171:VAL:HG22	1.81	0.62
1:A:208:LEU:HB3	1:A:264:MET:HE1	1.85	0.59
1:A:124:GLY:HA3	1:B:6:MET:HE3	1.84	0.58
1:B:186:VAL:HG23	1:B:188:ARG:HG2	1.87	0.56
1:B:5:LYS:HG2	1:B:291:PHE:CZ	2.43	0.54
1:A:293:PRO:O	1:A:297:VAL:HG13	2.09	0.53
1:A:128:CYS:HB3	1:B:4:ARG:NH1	2.25	0.52
1:A:107:GLN:H	1:A:110:GLN:NE2	2.07	0.52
1:B:40:ARG:HA	1:B:87:LEU:HG	1.92	0.52
1:A:167:LEU:HB3	1:A:168:PRO:HD2	1.94	0.50
1:B:198:THR:HG22	1:B:238:ASN:OD1	2.12	0.49
1:B:294:PHE:HE1	1:B:298:ARG:NH1	2.10	0.49
1:B:86:LEU:HG	1:B:179:GLY:HA2	1.94	0.48
1:A:56:ASP:O	1:A:60:ARG:HG3	2.12	0.48
1:A:109:GLY:HA2	1:A:200:ILE:HD13	1.96	0.48
1:B:188:ARG:HG3	1:B:190:THR:HG22	1.96	0.47
1:B:217:ARG:HB3	1:B:220:LEU:HD12	1.97	0.46
1:B:31:TRP:CE2	1:B:95:ASN:HB2	2.51	0.45
1:A:245:ASP:N	1:A:245:ASP:OD1	2.49	0.45
1:B:140:PHE:HD2	1:B:172:HIS:CG	2.37	0.43
1:A:192:GLN:H	1:A:192:GLN:HG2	1.68	0.43
1:B:82:MET:HE2	1:B:87:LEU:HD21	1.99	0.43
1:B:92:ASP:OD1	1:B:93:THR:OG1	2.32	0.43
1:B:106:ILE:HD11	1:B:130:MET:HE3	2.01	0.42
1:B:59:ILE:HD12	1:B:59:ILE:HA	1.92	0.42
1:B:66:PHE:HB2	1:B:77:VAL:HG21	2.02	0.42
1:B:167:LEU:HD12	1:B:171:VAL:HG23	2.02	0.41
1:A:83:GLN:OE1	1:A:88:ARG:HD2	2.20	0.41
1:B:115:LEU:HD11	1:B:122:PRO:HB3	2.03	0.41
1:A:177:LEU:HD13	1:A:177:LEU:HA	1.93	0.41
1:B:216:ASP:OD1	1:B:216:ASP:N	2.47	0.41
1:A:108:PRO:HB3	1:A:132:PRO:HA	2.02	0.41
1:B:63:ASN:ND2	1:B:78:ILE:O	2.54	0.41
1:B:148:VAL:HG11	1:B:159:PHE:CD1	2.56	0.41

*Continued on next page...*



Continued from previous page...

Atom-1	Atom-2	Interatomic distance (Å)	Clash overlap (Å)
1:A:95:ASN:HB3	1:A:98:THR:OG1	2.21	0.41
1:A:86:LEU:HG	1:A:179:GLY:HA2	2.04	0.40
1:B:82:MET:HE2	1:B:87:LEU:CD2	2.51	0.40
1:B:92:ASP:OD1	1:B:93:THR:N	2.54	0.40
1:B:276:MET:HE2	1:B:279:ARG:O	2.21	0.40
1:A:137:LYS:O	1:B:4:ARG:CZ	2.69	0.40

There are no symmetry-related clashes.

## 5.3 Torsion angles [i](#)

### 5.3.1 Protein backbone [i](#)

In the following table, the Percentiles column shows the percent Ramachandran outliers of the chain as a percentile score with respect to all X-ray entries followed by that with respect to entries of similar resolution.

The Analysed column shows the number of residues for which the backbone conformation was analysed, and the total number of residues.

Mol	Chain	Analysed	Favoured	Allowed	Outliers	Percentiles	
1	A	297/299 (99%)	291 (98%)	6 (2%)	0	100	100
1	B	297/299 (99%)	290 (98%)	7 (2%)	0	100	100
All	All	594/598 (99%)	581 (98%)	13 (2%)	0	100	100

There are no Ramachandran outliers to report.

### 5.3.2 Protein sidechains [i](#)

In the following table, the Percentiles column shows the percent sidechain outliers of the chain as a percentile score with respect to all X-ray entries followed by that with respect to entries of similar resolution.

The Analysed column shows the number of residues for which the sidechain conformation was analysed, and the total number of residues.

Mol	Chain	Analysed	Rotameric	Outliers	Percentiles	
1	A	231/257 (90%)	225 (97%)	6 (3%)	46	32
1	B	223/257 (87%)	219 (98%)	4 (2%)	59	47

Continued on next page...

*Continued from previous page...*

Mol	Chain	Analysed	Rotameric	Outliers	Percentiles
All	All	454/514 (88%)	444 (98%)	10 (2%)	52 39

All (10) residues with a non-rotameric sidechain are listed below:

Mol	Chain	Res	Type
1	A	6	MET
1	A	22	CYS
1	A	165	MET
1	A	202	LEU
1	A	245	ASP
1	A	289	ASP
1	B	27	LEU
1	B	35	THR
1	B	168	PRO
1	B	202	LEU

Sometimes sidechains can be flipped to improve hydrogen bonding and reduce clashes. All (2) such sidechains are listed below:

Mol	Chain	Res	Type
1	A	110	GLN
1	A	164	HIS

### 5.3.3 RNA [i](#)

There are no RNA molecules in this entry.

### 5.4 Non-standard residues in protein, DNA, RNA chains [i](#)

There are no non-standard protein/DNA/RNA residues in this entry.

### 5.5 Carbohydrates [i](#)

There are no monosaccharides in this entry.

### 5.6 Ligand geometry [i](#)

2 ligands are modelled in this entry.

In the following table, the Counts columns list the number of bonds (or angles) for which Mogul statistics could be retrieved, the number of bonds (or angles) that are observed in the model and the number of bonds (or angles) that are defined in the Chemical Component Dictionary. The Link column lists molecule types, if any, to which the group is linked. The Z score for a bond length (or angle) is the number of standard deviations the observed value is removed from the expected value. A bond length (or angle) with  $|Z| > 2$  is considered an outlier worth inspection. RMSZ is the root-mean-square of all Z scores of the bond lengths (or angles).

Mol	Type	Chain	Res	Link	Bond lengths			Bond angles		
					Counts	RMSZ	# Z  > 2	Counts	RMSZ	# Z  > 2
2	80I	A	401	1	38,40,40	3.63	12 (31%)	46,57,57	3.21	13 (28%)
2	80I	B	401	-	38,40,40	3.60	12 (31%)	46,57,57	1.55	11 (23%)

In the following table, the Chirals column lists the number of chiral outliers, the number of chiral centers analysed, the number of these observed in the model and the number defined in the Chemical Component Dictionary. Similar counts are reported in the Torsion and Rings columns. '-' means no outliers of that kind were identified.

Mol	Type	Chain	Res	Link	Chirals	Torsions	Rings
2	80I	A	401	1	-	14/32/46/46	0/3/3/3
2	80I	B	401	-	-	7/32/46/46	0/3/3/3

All (24) bond length outliers are listed below:

Mol	Chain	Res	Type	Atoms	Z	Observed(Å)	Ideal(Å)
2	A	401	80I	C24-C23	-11.04	1.35	1.53
2	B	401	80I	C24-C23	-11.03	1.35	1.53
2	A	401	80I	C20-C21	-10.96	1.38	1.52
2	B	401	80I	C20-C21	-10.82	1.39	1.52
2	A	401	80I	C21-N22	9.03	1.43	1.33
2	B	401	80I	C21-N22	9.01	1.43	1.33
2	A	401	80I	C02-N14	6.52	1.48	1.34
2	B	401	80I	O28-C27	-6.10	1.38	1.43
2	A	401	80I	C16-N17	6.00	1.47	1.34
2	B	401	80I	C23-N22	5.53	1.57	1.46
2	A	401	80I	C23-N22	5.48	1.57	1.46
2	B	401	80I	C02-N14	5.44	1.46	1.34
2	B	401	80I	C16-N17	5.24	1.45	1.34
2	A	401	80I	O28-C27	-3.78	1.40	1.43
2	A	401	80I	C24-C20	3.54	1.63	1.54
2	B	401	80I	C24-C20	3.46	1.63	1.54
2	A	401	80I	O25-C21	-2.41	1.18	1.23
2	A	401	80I	C03-C02	2.39	1.56	1.50
2	A	401	80I	O34-C16	-2.30	1.18	1.23

*Continued on next page...*

*Continued from previous page...*

Mol	Chain	Res	Type	Atoms	Z	Observed(Å)	Ideal(Å)
2	B	401	80I	O34-C16	-2.29	1.18	1.23
2	B	401	80I	O25-C21	-2.21	1.19	1.23
2	A	401	80I	O12-C11	2.19	1.40	1.36
2	B	401	80I	O01-C02	-2.18	1.18	1.23
2	B	401	80I	O12-C11	2.09	1.40	1.36

All (24) bond angle outliers are listed below:

Mol	Chain	Res	Type	Atoms	Z	Observed(°)	Ideal(°)
2	A	401	80I	C03-C02-N14	9.85	133.49	115.20
2	A	401	80I	C15-N14-C02	8.95	143.51	121.60
2	A	401	80I	O12-C11-C06	8.93	123.19	114.46
2	A	401	80I	O01-C02-N14	-6.21	111.02	122.45
2	B	401	80I	O12-C11-C06	5.50	119.83	114.46
2	A	401	80I	C18-N17-C16	5.06	132.51	121.67
2	A	401	80I	O12-C11-C10	-4.69	116.46	124.24
2	A	401	80I	C03-N04-C07	4.42	113.66	104.45
2	A	401	80I	C35-C15-N14	4.41	120.74	110.58
2	A	401	80I	C15-C16-N17	4.22	125.96	116.70
2	A	401	80I	C13-O12-C11	-3.37	113.03	117.75
2	A	401	80I	C23-N22-C21	-3.20	107.56	113.84
2	A	401	80I	O34-C16-N17	-3.18	117.05	122.93
2	B	401	80I	C03-N04-C07	2.93	110.57	104.45
2	B	401	80I	C24-C20-C21	2.89	106.63	102.88
2	B	401	80I	C23-N22-C21	-2.81	108.32	113.84
2	B	401	80I	C13-O12-C11	-2.57	114.14	117.75
2	A	401	80I	O01-C02-C03	-2.57	115.49	121.08
2	B	401	80I	C19-C20-C24	-2.50	108.12	117.31
2	B	401	80I	C03-C02-N14	2.47	119.78	115.20
2	B	401	80I	C24-C23-N22	2.45	107.02	103.43
2	B	401	80I	O12-C11-C10	-2.44	120.21	124.24
2	B	401	80I	C15-C16-N17	2.20	121.53	116.70
2	B	401	80I	O34-C16-N17	-2.13	118.99	122.93

There are no chirality outliers.

All (21) torsion outliers are listed below:

Mol	Chain	Res	Type	Atoms
2	A	401	80I	N14-C15-C35-C36
2	A	401	80I	C18-C19-C20-C24
2	A	401	80I	C18-C26-C27-O28
2	A	401	80I	C03-C02-N14-C15

*Continued on next page...*

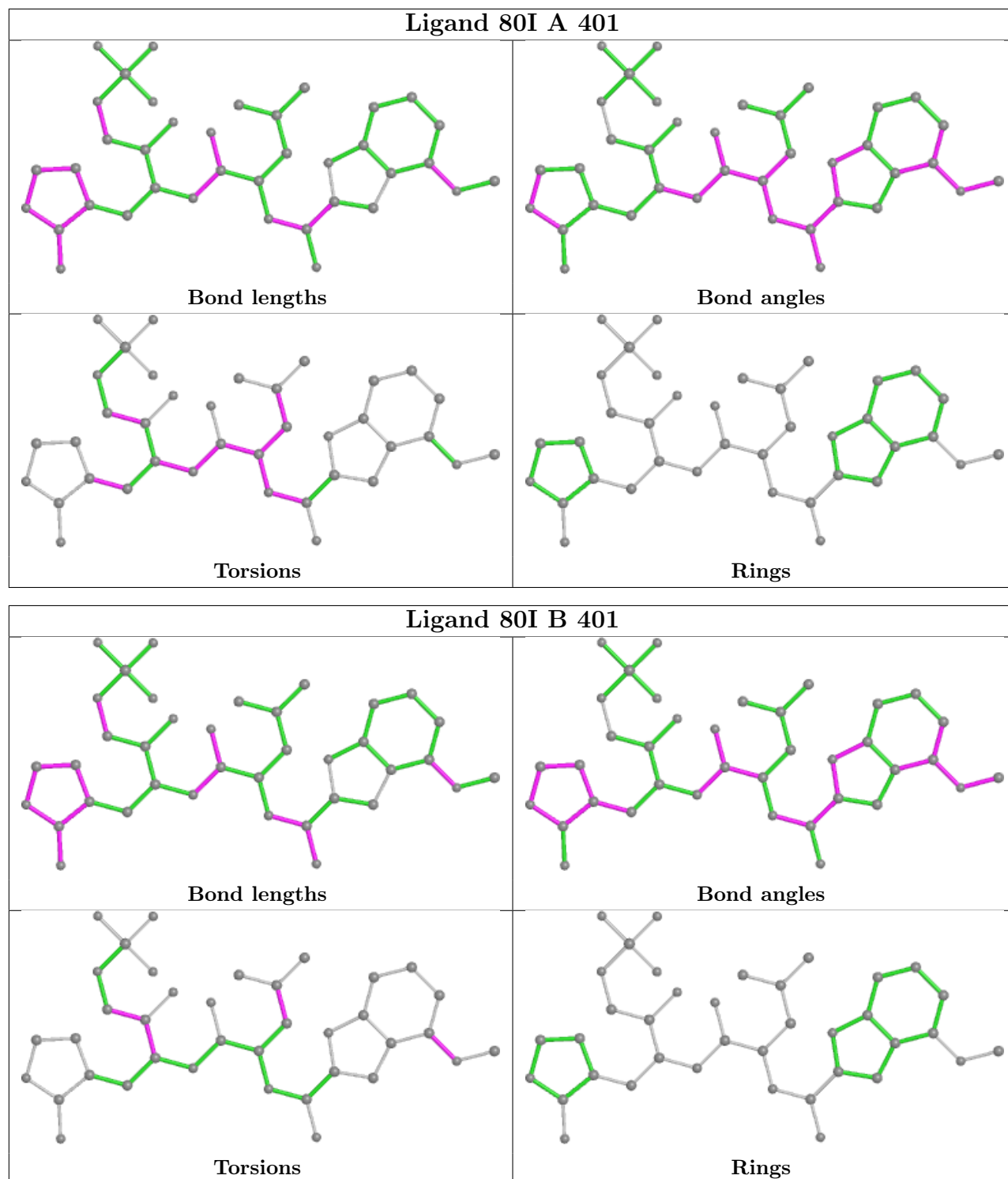
*Continued from previous page...*

Mol	Chain	Res	Type	Atoms
2	A	401	80I	O01-C02-N14-C15
2	B	401	80I	C18-C26-C27-O28
2	B	401	80I	O33-C26-C27-O28
2	B	401	80I	C10-C11-O12-C13
2	B	401	80I	C06-C11-O12-C13
2	A	401	80I	C19-C18-N17-C16
2	B	401	80I	C15-C35-C36-C37
2	A	401	80I	C15-C35-C36-C37
2	A	401	80I	C15-C35-C36-C38
2	B	401	80I	C15-C35-C36-C38
2	A	401	80I	O34-C16-N17-C18
2	A	401	80I	C15-C16-N17-C18
2	A	401	80I	C16-C15-C35-C36
2	A	401	80I	C35-C15-N14-C02
2	A	401	80I	N14-C15-C16-N17
2	A	401	80I	N14-C15-C16-O34
2	B	401	80I	N17-C18-C26-O33

There are no ring outliers.

No monomer is involved in short contacts.

The following is a two-dimensional graphical depiction of Mogul quality analysis of bond lengths, bond angles, torsion angles, and ring geometry for all instances of the Ligand of Interest. In addition, ligands with molecular weight > 250 and outliers as shown on the validation Tables will also be included. For torsion angles, if less than 5% of the Mogul distribution of torsion angles is within 10 degrees of the torsion angle in question, then that torsion angle is considered an outlier. Any bond that is central to one or more torsion angles identified as an outlier by Mogul will be highlighted in the graph. For rings, the root-mean-square deviation (RMSD) between the ring in question and similar rings identified by Mogul is calculated over all ring torsion angles. If the average RMSD is greater than 60 degrees and the minimal RMSD between the ring in question and any Mogul-identified rings is also greater than 60 degrees, then that ring is considered an outlier. The outliers are highlighted in purple. The color gray indicates Mogul did not find sufficient equivalents in the CSD to analyse the geometry.



## 5.7 Other polymers [\(i\)](#)

There are no such residues in this entry.

## 5.8 Polymer linkage issues

There are no chain breaks in this entry.

## 6 Fit of model and data [i](#)

### 6.1 Protein, DNA and RNA chains [i](#)

In the following table, the column labelled ‘#RSRZ > 2’ contains the number (and percentage) of RSRZ outliers, followed by percent RSRZ outliers for the chain as percentile scores relative to all X-ray entries and entries of similar resolution. The OWAB column contains the minimum, median, 95<sup>th</sup> percentile and maximum values of the occupancy-weighted average B-factor per residue. The column labelled ‘Q < 0.9’ lists the number of (and percentage) of residues with an average occupancy less than 0.9.

Mol	Chain	Analysed	<RSRZ>	#RSRZ>2	OWAB(Å <sup>2</sup> )	Q<0.9
1	A	299/299 (100%)	0.48	17 (5%) 23 30	31, 45, 65, 85	0
1	B	299/299 (100%)	0.54	13 (4%) 35 42	27, 51, 70, 80	0
All	All	598/598 (100%)	0.51	30 (5%) 28 36	27, 47, 68, 85	0

All (30) RSRZ outliers are listed below:

Mol	Chain	Res	Type	RSRZ
1	A	49	MET	7.1
1	A	191	ALA	6.5
1	A	46	ALA	6.1
1	B	46	ALA	3.5
1	A	48	ASP	3.5
1	B	48	ASP	3.4
1	B	45	THR	3.3
1	A	45	THR	3.0
1	B	237	TYR	3.0
1	B	233	VAL	2.7
1	A	66	PHE	2.6
1	B	277	ASN	2.6
1	B	49	MET	2.6
1	A	24	THR	2.6
1	A	2	GLY	2.6
1	B	281	ILE	2.5
1	A	89	LEU	2.5
1	B	47	GLU	2.4
1	A	277	ASN	2.4
1	A	93	THR	2.4
1	B	78	ILE	2.4
1	A	31	TRP	2.3
1	A	77	VAL	2.3
1	A	52	PRO	2.2

*Continued on next page...*



*Continued from previous page...*

Mol	Chain	Res	Type	RSRZ
1	A	294	PHE	2.2
1	B	128	CYS	2.2
1	B	223	PHE	2.1
1	A	79	GLY	2.1
1	B	112	PHE	2.1
1	A	7	ALA	2.0

## 6.2 Non-standard residues in protein, DNA, RNA chains [i](#)

There are no non-standard protein/DNA/RNA residues in this entry.

## 6.3 Carbohydrates [i](#)

There are no monosaccharides in this entry.

## 6.4 Ligands [i](#)

LIGAND-RSR INFOmissingINFO

## 6.5 Other polymers [i](#)

There are no such residues in this entry.